



Evaluation of germline BMP4 mutation as a cause of colorectal cancer.

Journal:	<i>Human Mutation</i>
Manuscript ID:	humu-2010-0237.R1
Wiley - Manuscript type:	Mutation in Brief
Date Submitted by the Author:	27-Aug-2010
Complete List of Authors:	<p>Lubbe, Steven; Institution of Cancer Research, Section of Cancer Genetics</p> <p>Matijssen, Berry; Institution of Cancer Research, Medicinal Chemistry, Cancer Research UK Centre for Cancer Therapeutics</p> <p>Pittman, Alan; Institution of Cancer Research, Section of Cancer Genetics</p> <p>Twiss, Philip; Institution of Cancer Research, Section of Cancer Genetics</p> <p>Olver, Bianca; Institution of Cancer Research, Section of Cancer Genetics</p> <p>Llyod, Amy; Institution of Cancer Research, Section of Cancer Genetics</p> <p>Qureshi, Mobshra; Institution of Cancer Research, Section of Cancer Genetics</p> <p>Brown, Nathan; Institution of Cancer Research, Medicinal Chemistry, Cancer Research UK Centre for Cancer Therapeutics</p> <p>Nye, Emma; Cancer Research UK London Research Institute, Experimental Pathology Laboratory</p> <p>Stamp, Gordon; Cancer Research UK London Research Institute, Experimental Pathology Laboratory; Royal Marsden Hospital; Imperial College, Imperial College Faculty of Medicine</p> <p>Blagg, Julian; Institution of Cancer Research, Medicinal Chemistry, Cancer Research UK Centre for Cancer Therapeutics</p> <p>Houlston, Richard; Institution of Cancer Research, Section of Cancer Genetics</p>
Key Words:	bone morphogenetic protein-4, BMP4, rare mutations, colorectal cancer

1
2
3
4
5
6
7
8
9
10
11
12
13
14
15
16
17
18
19
20
21
22
23
24
25
26
27
28
29
30
31
32
33
34
35
36
37
38
39
40
41
42
43
44
45
46
47
48
49
50
51
52
53
54
55
56
57
58
59
60

SCHOLARONE™
Manuscripts

For Peer Review

Evaluation of germline *BMP4* mutation as a cause of colorectal cancer

Steven J Lubbe¹, Alan M Pittman¹, Cornelis Matijssen², Philip Twiss¹, Bianca Olver¹, Amy Lloyd¹, Mobshra Qureshi¹, Nathan Brown², Emma Nye³, Gordon Stamp^{3,4}, Julian Blagg², Richard S Houlston^{1*}

1. Section of Cancer Genetics, Institute of Cancer Research, Sutton SM2 5NG, UK

2. Medicinal Chemistry, Cancer Research UK Centre for Cancer Therapeutics, Institute of Cancer Research, Sutton SM2 5NG, UK

3. Experimental Pathology Laboratory, Cancer Research UK London Research Institute, 44 Lincoln's Inn Fields, London WC2A 3PX, UK

4. Royal Marsden Hospital, Fulham Road, London SW3 6JJ, UK; and Imperial College Faculty of Medicine, Imperial College Hammersmith Campus, Du Cane Road, London W12 0NN, UK

*Correspondence to Richard S Houlston, Section of Cancer Genetics, Institute of Cancer Research, Sutton, Surrey. SM2 5NG.

Tel: +44 (0) 208 722 4175 Fax: +44 (0) 208 722 4365. E-mail: Richard.Houlston@icr.ac.uk

Contract grant sponsor: Cancer Research UK (CRUK), and the European Union (EU); Contract grant number: C1298/A8362 supported by the Bobby Moore Fund and C309/A8274 awarded to the Cancer Research UK Centre for Cancer Therapeutics (CRUK). CPRB LSHC-CT-2004-503465 (EU).

Short Title: **Mutation in *BMP4* and colorectal cancer risk**

Communicated by <Please don't enter>

ABSTRACT: Transforming growth factor- β (TGF- β) signalling plays a key role in colorectal cancer (CRC). Bone morphogenetic protein-4 (BMP4) is a member of the TGF- β family of signal transduction molecules. To examine if germline mutation in *BMP4* causes CRC we analysed 504 genetically enriched CRC cases (by virtue of early-onset disease, family history of CRC) for mutations in the coding sequence of *BMP4*. We identified three pathogenic mutations, p.R286X (g.8330C>T), p.W325C (g.8449G>T) and p.C373S (g.8592G>C), amongst the CRC cases which were not observed in 524 healthy controls. p.R286X localises to the N-terminal of the TGF- β 1 prodomain truncating the protein prior to the active domain. p.W325C and p.C373S mutations are predicted from protein homology modelling with BMP2 to impact deleteriously on BMP4 function. Segregation of p.C373S with adenoma and hyperplastic polyp in first-degree relatives of the case suggests germline mutations may confer a juvenile polyposis-type phenotype. These findings suggest mutation of *BMP4* is a cause of CRC and the value of protein-based modelling in the elucidation of rare disease-causing variants. ©2010 Wiley-Liss, Inc.

KEY WORDS: bone morphogenetic protein-4; *BMP4*; rare mutations; colorectal cancer

Received <date>; accepted revised manuscript <date>.

© 2010 WILEY-LISS, INC.

2 Lubbe et al.

INTRODUCTION

Transforming growth factor- β (TGF- β ; OMIM 190180) signalling plays a key role in developmental biology, cell proliferation, differentiation and migration (Xu and Pasche, 2007); and increasingly recognised to be important in cancer biology (Tenesa and Dunlop, 2009). Furthermore, germline mutations in the genes encoding the TGF- β signalling proteins, SMAD4 (Howe, et al., 1998; OMIM 600993) and BMPR1A (Howe, et al., 2001; OMIM 601299) have been shown to cause juvenile polyposis, an autosomal dominant polyposis syndrome which confers a high risk of colorectal cancer (CRC).

Genome-wide association (GWA) studies have recently shown that common genetic variation in the gene encoding the TGF- β signalling protein *BMP4* influences CRC risk (Houlston, et al., 2008). The bone morphogenetic protein-4 (*BMP4*; OMIM 112262; NM_001202.3) gene maps to 14q22.2 and is composed of 4 exons. Multiple *BMP4* transcripts are generated (Shore, et al., 1998), but only exons 3 and 4 are translated (van den Wijngaard, et al., 1996), from which a homodimer of two 408 amino acid *BMP4* polypeptides is formed. Six cysteine residues form the critical protein folding motif (referred to as the cysteine knot) while a seventh cysteine is responsible for homodimerisation of *BMP4* (McDonald and Hendrickson, 1993). This homodimer consisting of TGF- β 1 prodomains and active domains (McDonald and Hendrickson, 1993) is proteolytically cleaved at two sites to generate the active ligand (Aono, et al., 1995). Mature *BMP4* initiates TGF- β signalling by binding to type I (*BMPR1A*) and type II (*BMPR2*; OMIM 600799) serine or threonine kinase receptors, triggering intracellular SMAD-signalling (Schmierer and Hill, 2007).

It is increasingly being recognised that both common variants and coding mutations of the same gene can confer cancer susceptibility, exemplified by *CDHI* (OMIM 192090) in colorectal cancer (Houlston, et al., 2008; Richards, et al., 1999; Salahshor, et al., 2001). To examine if rare germline mutations in the coding region of *BMP4* cause CRC we analysed 504 genetically enriched CRC cases.

METHODS

Subjects

Five hundred and four CRC cases (298 male) were ascertained through the National Study of Colorectal Cancer (NSCCG) (Penegar, et al., 2007) and the Royal Marsden Hospital NHS Trust Family History and DNA Registry (RMHNSHT). All cases had histologically proven colorectal adenocarcinoma (International classification of diseases, 9th Revision [ICD9] codes 153 or 154) and none had previously been documented to have a diagnosis of a cancer syndrome known to be associated with increased CRC risk. To enhance our power to detect germline mutations, case selection was prioritised for early-age of onset ($n=182$ diagnosed <55 years, family history of CRC $n=250$) and microsatellite stable (MSS) disease ($n=210$). Samples from 524 healthy individuals collected through RMHNSHT (219 males; mean age at sampling 58.0 years, SD 14.0), who did not have a personal history of malignancy at time of ascertainment served as a source of controls. Both cases and controls were UK residents and had self-reported European ancestry.

The study was conducted with informed consent and ethical approval (MREC 02/0/097 and RMHNSHT-CCR1552) in accordance with the declaration of Helsinki.

Molecular analyses

Genomic DNA was salt-extracted from EDTA-venous blood samples (Miller, et al., 1988). Amplification of genomic DNA was performed with 12.5ng DNA and PCR was carried out by use of Qiagen Multiplex Kit (QIAGEN Ltd, Crawley, UK). Sequencing was performed with Big Dye version 3.1 using ABI 3730xl semi-automated sequencers (Applied Biosystems, Foster City, USA) in accordance with the manufacturer's protocol. Sequence data was analysed using Mutation Surveyor (Soft Genetics, USA) and sequence changes were annotated

1
2
3
4
5
6
7
8
9
10
11
12
13
14
15
16
17
18
19
20
21
22
23
24
25
26
27
28
29
30
31
32
33
34
35
36
37
38
39
40
41
42
43
44
45
46
47
48
49
50
51
52
53
54
55
56
57
58
59
60

against GenBank contig NC_000014 sequence data according to the nomenclature advocated by Human Genetic Variation (HGV; den Dunnen and Antonarakis, 2000; <http://www.hgvs.org/>).

To assess allelic imbalance at 14q22.2-*BMP4* in the CRCs from cases carrying germline *BMP4* mutations, DNA was extracted from microdissected formalin fixed paraffin embedded (FFPE) tumors using Qiagen DNA Mini kits (QIAGEN Ltd., Crawley, UK). Loss of heterozygosity was assessed by comparing peak heights of PCR-amplified germline and tumor exon fragments encompassing mutations using ABI 3730xl semi-automated sequencers and Mutation Surveyor software.

Microsatellite instability (MSI) in CRCs was determined using BAT25 and BAT26 markers which are highly sensitive MSI markers (Boland, et al., 1998), as previously described (Penegar, et al., 2007). Samples showing novel alleles at either or both markers were assigned as MSI (corresponding to MSI-high).

To assess promoter CpG island methylation of *BMP4* (chr14:53,489,935-53,492,708 and 53,488,428-53,488,631) germline genomic DNA and tumor DNA from microdissected FFPE tumors were subjected to bisulfite conversion and were purified using the EpiTect Bisulfite kit (QIAGEN Ltd., Crawley, UK). PCR amplification of the putative *BMP4* sequence was performed on eluted DNA and search for differential methylation conducted by Pyrosequencing technology (QIAGEN Ltd., Crawley, UK) using biotinylated oligonucleotide primers.

Details of all oligonucleotide primers used are shown in Supplementary Table 1.

Bioinformatic analyses

We applied two *in silico* algorithms, PolyPhen (Ramensky, et al., 2002; <http://genetics.bwh.harvard.edu/pph/>) and SIFT (Ng and Henikoff, 2001; <http://sift.jcvi.org/>), to predict the putative effect of non-synonymous coding changes in *BMP4* on expressed protein function. Protein sequence of *BMP4* (NP_001193.2) was obtained from the NCBI Human RefSeq database (Pruitt, et al., 2005; <http://www.ncbi.nlm.nih.gov/refseq/>). PolyPhen scores were designated probably damaging (≥ 2.00), possibly damaging (1.50-1.99), potentially damaging (1.25-1.49), borderline (1.00-1.24), or benign (0.00-0.99) according to the classification proposed by Xi et al. 2004. SIFT scores were classified as intolerant (0.00-0.05), potentially intolerant (0.051-0.10), borderline (0.101-0.20), or tolerant (0.201-1.00) according to the classification proposed by Ng and Henikoff, 2001 and Xi et al., 2004.

The effect of *BMP4* mutations on the stability of *BMP4*, as well as the ability of *BMP4* to interact with other proteins, was investigated by homology modelling using Molecular operating environment v2008.10 (MOE, Chemical Computing Group Inc. Montreal, Canada). The functionally inactive prodomain could not be modelled due to lack of crystallised structures of *BMP4* and/or closely homologous proteins thus the structural analysis was limited to the active domain. *BMP2* (NP_001191.1) shows the greatest similarity to *BMP4* with a sequence identity of 90% and a similarity of 95% for the active domain. The active domains of *BMP2* and *BMP4* are also of similar length. Given the high sequence identity, similarity and length between the proteins, the effect of *BMP4* mutation in the active domain can be derived directly from the known crystal structure of *BMP2*. This also allowed for the generation of a homology model of *BMP4* based upon the *BMP2* structure.

Two crystal structures of *BMP2*, *2g00* (Pinto, et al., 2006) and *2h64* (Weber, et al., 2007) were obtained from The Protein Databank (Berman, et al., 2000; <http://www.pdb.org/pdb/home/home.do>) which served as templates for generation of the homology models of *BMP4*. Homology models were generated using the default settings with the Amber99 forcefield and medium model refinement. An overlay of the *BMP4* homology model and the *BMP2* crystal structure showed that the backbones of both proteins align and that sidechains occupy the same orientation.

4 Lubbe et al.

RESULTS

Complete sequence data of the coding regions of *BMP4* and accompanying splice sites was obtained for all 504 CRC cases and 524 controls. One common non-synonymous single nucleotide polymorphism (nsSNP) rs17563T>C (p.V152A) was found in both cases and controls at similar frequency (minor allele frequencies 0.44 and 0.41 respectively).

Five missense mutations, p.E93G (g.6788A>G), p.R226W (g.8150C>T), p.R287H (g.8334G>A), p.W325C (g.8449G>T) and p.C373S (g.8592G>C), and one truncating mutation, p.R286X (g.8330C>T), were identified in single individuals among the 504 CRC cases screened (Table 1). Four missense mutations, p.S154F (n=2; g.7935C>T), p.T225A (n=2; g.8147A>G), p.R226W and p.I381V (g.8615A>G), were identified in the 524 controls (Table 1). Comparative amino acid sequence analysis revealed complete conservation of the amino acid sequence of *BMP4* in eight species (human, chimpanzee, cow, rat, dog, chicken, frog, and zebrafish) at each of these positions (Figure 1). p.E96G is located in the functionally inactive prodomain of *BMP4* and is predicted by SIFT and PolyPhen to be benign/tolerated. p.S154F and p.R226W are both predicted to be probably damaging or to affect the protein structure, with p.T225A predicted to be benign/tolerated. However, all three mutations map to the prodomain of *BMP4* and are thus unlikely to have functional consequences *a priori*.

p.R287H was identified in a female case diagnosed with rectal CRC at age 42 (ICD9 code 154.1). The individual had concomitant colorectal adenomas at diagnosis. p.R287H is located in the prodomain adjacent to the proteolytic S1 cleavage site (-R-A-K-R-; amino acids 289-292). Cleavage of the S1 site is necessary for subsequent cleavage at the S2 site (-R-I-S-R-; amino acids 253-256) (Cui, et al., 2001). A basic residue at position 287 is prerequisite for site recognition/cleavage by furin (Watanabe, et al., 1993). Arginine and histidine are both basic amino acids and p.R287H is therefore unlikely to have any effect on the post-translational cleavage by furin. This mutation is predicted to be benign/tolerated by PolyPhen and SIFT (Table 1).

The nonsense mutation, p.R286X, was identified in a female CRC case diagnosed with sigmoid MSS CRC (ICD9 code 153.3) at age 42 who at the time of diagnosis had no first-degree relative affected with CRC. p.R286X localises to the N-terminal region of the TGF- β 1 prodomain truncating the protein prior to the active domain (amino acids 292-408). Thus, *BMP4* haploinsufficiency is likely to occur through nonsense-mediated RNA decay.

The missense mutations p.C373S and p.W325C map to the active domain of *BMP4*. p.C373S was identified in a female case diagnosed with sigmoid CRC (ICD9 code 153.3) at age 34. The case's father and brother who were diagnosed with colorectal adenomas at ages 67 and 36, respectively, have also been shown to carry the p.C373S mutation. In addition, one of the case's sisters, also a carrier of p.C373S, had hyperplastic polyps diagnosed at age of 35. The cysteine 373 residue is essential for the correct formation of the cysteine knot (McDonald and Hendrickson, 1993). p.W325C was identified in a male familial CRC case diagnosed with rectal disease at age 62 (ICD9 code 154.1). The patient's brother had previously died of colon cancer (ICD9 code 1539.0) at the age 60. Both p.C373S and p.W325C are likely to be detrimental to the structure of *BMP4* on the basis of PolyPhen and SIFT predictions (Table 1).

Only one missense mutation, p.I381V localising to the genomic region encoding the functional TGF- β domain was identified in a healthy control. This amino acid substitution is predicted to be benign/potentially intolerant by PolyPhen and SIFT (Table 1).

To further examine the impact of p.W325C, p.C373S and p.I381V mutations we modelled the effects of these amino acid substitutions on the structure of the *BMP4* protein. Isoleucine 381 interacts with other residues due to its location within a lipophilic pocket, but the p.I381V mutation changes its lipophilic properties to a limited extent thereby maintaining its interactions with the other residues. This mutation is not, therefore, predicted to impact protein stability (Figure 2A). Two crystal structures (*2g00* and *2h64*) show tryptophan 325 in two conformations.

Both conformations show an edge-to-face interaction with tryptophan 322 but the tryptophan residue flips in orientation between the two conformations (Figure 2B). The p.W325C mutation reduces this edge-to-face interaction and is predicted to lower the stability of the protein. The p.C373S mutation (Figure 2C) is predicted to result in a less stable protein structure due as to the removal of a critical disulphide bond and cysteine knot motif.

Since BMP4 is known to associate with BMPR1A, protein-protein interactions were investigated between the BMP4-BMPR1A protein-complex. Tryptophan 325 of BMP4 is the only residue predicted to interact with BMPR1A as it is identical in the aligned sequence of BMP2 and BMP4. Therefore, the crystal structure of BMP2 was used as a model to analyse the effect of mutation on the protein-protein complex. Tryptophan 325 forms a π -stacking interaction with arginine 88 and forms an edge-to-face interaction with phenylalanine 85 (Figure 2D). The mutation p.W325C is thus predicted to significantly reduce these interactions and result in reduced binding of BMPR1A to BMP4. Because multiple residues are involved in binding between both proteins it is difficult to predict if this variant would result in a complete loss of the formation of the BMP4-BMPR1A complex.

Archival tumor blocks were available on CRCs from p.R286X and p.C373S. Using these we examined tumor for loss of heterozygosity indicative of BMP4 having a tumor suppressor role. In both cases no evidence of differential allelotype was seen between germline and tumor DNA (data not shown). **Using paired normal and tumor DNA samples we also failed to demonstrate differential methylation of the *BMP4* promoter (Data not shown).**

DISCUSSION

The BMP pathway is inactivated in a large proportion of sporadic CRC (Kodach, et al., 2008). Evidence for germline mutation in BMP4 having a role in CRC predisposition is provided by the study of inhibition of BMP4 signalling by transgenic expression of noggin in the mouse intestine. This leads to the formation of numerous ectopic crypt units, perpendicular to the crypt-villus axis, changes which typify the juvenile polyposis syndrome (Haramis, et al., 2004).

In this study we have sought to establish a direct relationship between germline mutation in *BMP4* and risk of CRC. It can be difficult to prove that a particular rare variant observed is etiologic unless those variants are strong candidates. BMP signalling inhibits intestinal stem cell self-renewal through suppression of Wnt- β -catenin signalling and disruption of this signalling pathway has strong candidacy for CRC predisposition (He, et al., 2004). Direct evidence for this assertion is provided by the fact that inactivating mutations in SMAD4 (Howe, et al., 1998) and BMPR1A (Howe, et al., 2001), which, like BMP4 are members of the TGF- β superfamily cause the rare juvenile polyposis syndrome, which carries a very high risk of CRC. These data provide strong evidence that haploinsufficiency of BMP4 will increase CRC risk. Kryukov et al. have provided empiric evidence that about 70% of missense mutations present at population frequencies of 1% or less probably contribute to the phenotype in which they are first identified (Kryukov, et al., 2007). While we identified six mutations in both case and controls, three and five of the mutations in the cases and controls respectively map to the pro-domain of the expressed protein and are very unlikely to have any functional consequences. On the basis of detailed bioinformatics and protein homology modelling, only the three case mutations are likely to have functional consequences on the expressed protein. Sequence variations in the coding region of *BMP4*, aside from rs17563, are rare in both European (Felder, et al., 2002; Weber, et al., 2008) and Chinese populations (Suzuki, et al., 2009). On the basis of collective data on over 1,300 healthy population controls screened in our study and previously reported data (Bakrania, et al., 2008; Felder, et al., 2002; Suzuki, et al., 2009; Weber, et al., 2008) we identified three *BMP4* mutations in our CRC cohort which are predicted to functionally deleterious on expressed BMP4 (none were identified in controls) would mean that there is more than a 90% probability that at least one of these variants contributes directly to the development of CRC.

Although in part speculative the demonstration that colorectal adenomas segregated with the p.C373S mutation in the one family and the fact that the case harboring p.W325C had a first-degree relative affected with CRC suggests that *BMP4* mutations are likely to confer a moderate-high risk of CRC.

6 Lubbe et al.

In our study we did not observe loss of the wild-type allele in CRC from mutation carriers, providing little support for a classical tumor suppressor model of carcinogenesis. Although we were unable to demonstrate differential methylation of the putative promoter region of *BMP4* we cannot fully exclude the possibility of inactivation of the wild-type allele through hypermethylation as a basis of tumor development. Accepting this caveat there exists the possibility that *BMP4* mutations may impact on risk through a dominant negative effect as has previously been shown for *SMAD4* mutations causing Juvenile polyposis (Howe, et al., 1998).

Bmp signalling is a determinant of dorsal closure in *Drosophila Melanogaster* (Fernandez, et al., 2007), and in concert with Shh, growth factors and Wnt7a coordinates growth and anteroposterior, proximodistal, and dorsoventral axes morphogenesis (Basler and Struhl, 1994; Kingsley, 1994; Tickle, 1995). While we did not document any associated extra-colonic clinical feature in the cases in which we identified *BMP4* mutations, intriguingly a relationship between genetic susceptibility to clefting and cancer risk is supported in some epidemiological studies (Bille, et al., 2005; Zhu, et al., 2002). Germline mutations in *BMP4* have been suggested to be causal of cleft lip/palate (Suzuki, et al., 2009), anomalies kidney development (Weber, et al., 2008) and neural tube defects (Felder, et al., 2002). Aside from one truncating mutation (Suzuki, et al., 2009) all of the mutations on which these assertions rest are based on sequence variation predicted to have no functional consequence. Contiguous gene defects involving *BMP4* have been implicated in etiology of eye, brain, and digit anomalies (Bakrania, et al., 2008) although carrier first-degree relatives of some of the affected individuals were shown to be phenotypically unaffected.

There is increasing recognition that much of the excess familial risk of CRC is a consequence of rare disease-causing variants. The use of next generation sequencing technologies to screen CRC cases for causal variants will require enunciation of variants through bioinformatic methodologies. This study serves to illustrate the use of protein homology modelling methods for such analyses.

We have previously shown that SNPs close to the BMP antagonist, Gremlin-1 (*GREM1*; OMIM 603054) are associated with CRC risk (Jaeger, et al., 2008). Our findings provide a strong rationale for evaluating additional members of the TGF- β superfamily of genes for coding mutations. Furthermore our finding provides a strong rationale for screening other genes identified by GWA studies is likely to identify additional germline mutations, which may cause CRC.

ACKNOWLEDGEMENTS

Funding was provided by Cancer Research UK (C1298/A8362 supported by the Bobby Moore Fund and C309/A8274 awarded to the Cancer Research UK Centre for Cancer Therapeutics) and the European Union (CPRB LSHC-CT-2004-503465). We are grateful to the NCRN, clinicians and other hospital staff for supporting NSCCG. Finally, we are grateful to all the patients and individuals for their participation in this study.

FIGURE LEGENDS

Figure 1: Amino acid sequence alignment of vertebrate *BMP4*.

The upper figure shows a schematic representation of the human *BMP4* gene (NM_001202.3) with the positions of exons and their translated protein domains. Both exon 3 and exon 4 are in the translated region (grey arrow). Filled green is the TGF beta prodomain and violet is the TGF beta active domain. Positions of mutations identified are indicated for cases (dark blue arrows) and controls (green arrows). The position of R226W seen in both cases and controls is indicated by a light blue arrow. The S1 and S2 furin cleavage sites are also shown. Comparative amino acid alignment follows the order of Pan troglodytes (Chimpanzee [XP_509954]), Macaca mulatta (Rhesus monkey [XP_001084801]), Canis familiaris (Dog [XP_851628]), Homo sapiens (Human [NP_001193]), Equus caballus (Horse [NP_001157442]), Bos taurus (Cow [NP_001039342]), Mus musculus (Mouse [NP_031580.1]),

Rattus norvegicus (Rat [NP_036959]), Gallus gallus (Chicken [NP_990568]), Xenopus tropicalis (Western clawed Frog [NP_001017034]), and Xenopus laevis (African clawed frog [NP_001081501]).

Figure 2: Homology modelling of BMP4 using the structure of BMP2.

A: Isoleucine 381 (green) within a lipophilic pocket (purple); B: The interactions formed by tryptophan 325 in two different conformations (purple and yellow) with tryptophan 322 and tyrosine 385 (grey); C: The disulphide bridge formed by cysteine 373 (white); D: The interacting residues with tryptophan 325 (white), BMP4 (grey) and BMPRI1A (orange).

TABLE LEGENDS

Table 1: Predicted effects of non-synonymous coding changes in *BMP4* on expressed protein function.

g, position of mutation within genomic DNA (GenBank reference sequence NM_001202.3); N/A, Not applicable; p, position of mutation within protein (GenBank reference sequence NP_001193.2); PolyPhen, *polymorphism phenotyping*; SIFT, sorts *intolerant from tolerant*

SUPPLEMENTARY TABLE LEGENDS

Supplementary Table 1: Oligonucleotide primer pairs

* Biotin label; F, forward primer; p, position of mutation within protein (GenBank reference sequence NP_001193.2); R, reverse primer; S, sequencing primer. All oligonucleotide primer pairs for *BMP4* were designed using GenBank reference sequence NM_001202.3

REFERENCES

- Aono A, Hazama M, Notoya K, Taketomi S, Yamasaki H, Tsukuda R, Sasaki S, Fujisawa Y. 1995. Potent ectopic bone-inducing activity of bone morphogenetic protein-4/7 heterodimer. *Biochem Biophys Res Commun* 210(3):670-7.
- Bakrania P, Efthymiou M, Klein JC, Salt A, Bunyan DJ, Wyatt A, Ponting CP, Martin A, Williams S, Lindley V and others. 2008. Mutations in BMP4 cause eye, brain, and digit developmental anomalies: overlap between the BMP4 and hedgehog signaling pathways. *Am J Hum Genet* 82(2):304-19.
- Basler K, Struhl G. 1994. Compartment boundaries and the control of Drosophila limb pattern by hedgehog protein. *Nature* 368(6468):208-14.
- Berman HM, Westbrook J, Feng Z, Gilliland G, Bhat TN, Weissig H, Shindyalov IN, Bourne PE. 2000. The Protein Data Bank. *Nucleic Acids Res* 28(1):235-42.
- Bille C, Winther JF, Bautz A, Murray JC, Olsen J, Christensen K. 2005. Cancer risk in persons with oral cleft--a population-based study of 8,093 cases. *Am J Epidemiol* 161(11):1047-55.
- Boland CR, Thibodeau SN, Hamilton SR, Sidransky D, Eshleman JR, Burt RW, Meltzer SJ, Rodriguez-Bigas MA, Fodde R, Ranzani GN and others. 1998. A National Cancer Institute Workshop on Microsatellite Instability for cancer detection and familial predisposition: development of international criteria for the determination of microsatellite instability in colorectal cancer. *Cancer Res* 58(22):5248-57.
- Cui Y, Hackenmiller R, Berg L, Jean F, Nakayama T, Thomas G, Christian JL. 2001. The activity and signaling range of mature BMP-4 is regulated by sequential cleavage at two sites within the prodomain of the precursor. *Genes Dev* 15(21):2797-802.
- den Dunnen JT, Antonarakis SE. 2000. Mutation nomenclature extensions and suggestions to describe complex mutations: a discussion. *Hum Mutat* 15(1):7-12.
- Felder B, Stegmann K, Schultealbert A, Geller F, Strehl E, Ermert A, Koch MC. 2002. Evaluation of BMP4 and its specific inhibitor NOG as candidates in human neural tube defects (NTDs). *Eur J Hum Genet* 10(11):753-6.
- Fernandez BG, Arias AM, Jacinto A. 2007. Dpp signalling orchestrates dorsal closure by regulating cell shape changes both in the amnioserosa and in the epidermis. *Mech Dev* 124(11-12):884-97.
- Haramis AP, Begthel H, van den Born M, van Es J, Jonkheer S, Offerhaus GJ, Clevers H. 2004. De novo crypt formation and juvenile polyposis on BMP inhibition in mouse intestine. *Science* 303(5664):1684-6.
- He XC, Zhang J, Tong WG, Tawfik O, Ross J, Scoville DH, Tian Q, Zeng X, He X, Wiedemann LM and others. 2004. BMP signaling inhibits intestinal stem cell self-renewal through suppression of Wnt-beta-catenin signaling. *Nat Genet* 36(10):1117-21.
- Houlston RS, Webb E, Broderick P, Pittman AM, Di Bernardo MC, Lubbe S, Chandler I, Vijayakrishnan J, Sullivan K, Penegar S and others. 2008. Meta-analysis of genome-wide association data identifies four new susceptibility loci for colorectal cancer. *Nat Genet* 40(12):1426-35.
- Howe JR, Bair JL, Sayed MG, Anderson ME, Mitros FA, Petersen GM, Velculescu VE, Traverso G, Vogelstein B. 2001. Germline mutations of the gene encoding bone morphogenetic protein receptor 1A in juvenile polyposis. *Nat Genet* 28(2):184-7.
- Howe JR, Roth S, Ringold JC, Summers RW, Jarvinen HJ, Sistonen P, Tomlinson IP, Houlston RS, Bevan S, Mitros FA and others. 1998. Mutations in the SMAD4/DPC4 gene in juvenile polyposis. *Science* 280(5366):1086-8.
- Jaeger E, Webb E, Howarth K, Carvajal-Carmona L, Rowan A, Broderick P, Walther A, Spain S, Pittman A, Kemp Z and others. 2008. Common genetic variants at the CRAC1 (HMPS) locus on chromosome 15q13.3 influence colorectal cancer risk. *Nat Genet* 40(1):26-8.
- Kingsley DM. 1994. The TGF-beta superfamily: new members, new receptors, and new genetic tests of function in different organisms. *Genes Dev* 8(2):133-46.
- Kodach LL, Wiercinska E, de Miranda NF, Bleuming SA, Musler AR, Peppelenbosch MP, Dekker E, van den Brink GR, van Noesel CJ, Morreau H and others. 2008. The bone morphogenetic protein pathway is inactivated in the majority of sporadic colorectal cancers. *Gastroenterology* 134(5):1332-41.
- Kryukov GV, Pennacchio LA, Sunyaev SR. 2007. Most rare missense alleles are deleterious in humans: implications for complex disease and association studies. *Am J Hum Genet* 80(4):727-39.
- McDonald NQ, Hendrickson WA. 1993. A structural superfamily of growth factors containing a cystine knot motif. *Cell* 73(3):421-4.
- Miller SA, Dykes DD, Polesky HF. 1988. A simple salting out procedure for extracting DNA from human nucleated cells. *Nucleic Acids Res* 16(3):1215.
- Ng PC, Henikoff S. 2001. Predicting deleterious amino acid substitutions. *Genome Res* 11(5):863-74.
- Penegar S, Wood W, Lubbe S, Chandler I, Broderick P, Papaemmanuil E, Sellick G, Gray R, Peto J, Houlston R. 2007. National study of colorectal cancer genetics. *Br J Cancer* 97(9):1305-9.
- Pinto DJ, Galemno RA, Jr., Quan ML, Orwat MJ, Clark C, Li R, Wells B, Woerner F, Alexander RS, Rossi KA and others. 2006. Discovery of potent, efficacious, and orally bioavailable inhibitors of blood coagulation factor Xa with neutral P1 moieties. *Bioorg Med Chem Lett* 16(21):5584-9.

- 1
2
3 Pruitt KD, Tatusova T, Maglott DR. 2005. NCBI Reference Sequence (RefSeq): a curated non-redundant sequence database of
4 genomes, transcripts and proteins. *Nucleic Acids Res* 33(Database issue):D501-4.
- 5 Ramensky V, Bork P, Sunyaev S. 2002. Human non-synonymous SNPs: server and survey. *Nucleic Acids Res* 30(17):3894-
6 900.
- 7 Richards FM, McKee SA, Rajpar MH, Cole TR, Evans DG, Jankowski JA, McKeown C, Sanders DS, Maher ER. 1999.
8 Germline E-cadherin gene (CDH1) mutations predispose to familial gastric cancer and colorectal cancer. *Hum Mol*
9 *Genet* 8(4):607-10.
- 10 Salahshor S, Hou H, Diep CB, Loukola A, Zhang H, Liu T, Chen J, Iselius L, Rubio C, Lothe RA and others. 2001. A germline
11 E-cadherin mutation in a family with gastric and colon cancer. *Int J Mol Med* 8(4):439-43.
- 12 Schmierer B, Hill CS. 2007. TGFbeta-SMAD signal transduction: molecular specificity and functional flexibility. *Nat Rev Mol*
13 *Cell Biol* 8(12):970-82.
- 14 Shore EM, Xu M, Shah PB, Janoff HB, Hahn GV, Deardorff MA, Sovinsky L, Spinner NB, Zasloff MA, Wozney JM and
15 others. 1998. The human bone morphogenetic protein 4 (BMP-4) gene: molecular structure and transcriptional
16 regulation. *Calcif Tissue Int* 63(3):221-9.
- 17 Suzuki S, Marazita ML, Cooper ME, Miwa N, Hing A, Jugessur A, Natsume N, Shimozato K, Ohbayashi N, Suzuki Y and
18 others. 2009. Mutations in BMP4 are associated with subepithelial, microform, and overt cleft lip. *Am J Hum Genet*
19 84(3):406-11.
- 20 Tenesa A, Dunlop MG. 2009. New insights into the aetiology of colorectal cancer from genome-wide association studies. *Nat*
21 *Rev Genet*.
- 22 Tickle C. 1995. Vertebrate limb development. *Curr Opin Genet Dev* 5(4):478-84.
- 23 van den Wijngaard A, van Kraay M, van Zoelen EJ, Olijve W, Boersma CJ. 1996. Genomic organization of the human bone
24 morphogenetic protein-4 gene: molecular basis for multiple transcripts. *Biochem Biophys Res Commun* 219(3):789-
25 94.
- 26 Watanabe T, Murakami K, Nakayama K. 1993. Positional and additive effects of basic amino acids on processing of precursor
27 proteins within the constitutive secretory pathway. *FEBS Lett* 320(3):215-8.
- 28 Weber D, Kotzsch A, Nickel J, Harth S, Seher A, Mueller U, Sebald W, Mueller TD. 2007. A silent H-bond can be
29 mutationally activated for high-affinity interaction of BMP-2 and activin type IIB receptor. *BMC Struct Biol* 7:6.
- 30 Weber S, Taylor JC, Winyard P, Baker KF, Sullivan-Brown J, Schild R, Knuppel T, Zurowska AM, Caldas-Alfonso A, Litwin
31 M and others. 2008. SIX2 and BMP4 mutations associate with anomalous kidney development. *J Am Soc Nephrol*
32 19(5):891-903.
- 33 Xu Y, Pasche B. 2007. TGF-beta signaling alterations and susceptibility to colorectal cancer. *Hum Mol Genet* 16 Spec No
34 1:R14-20.
- 35 Zhu JL, Basso O, Hasle H, Winther JF, Olsen JH, Olsen J. 2002. Do parents of children with congenital malformations have a
36 higher cancer risk? A nationwide study in Denmark. *Br J Cancer* 87(5):524-8.
- 37
38
39
40
41
42
43
44
45
46
47
48
49
50
51
52
53
54
55
56
57
58
59
60

10 Lubbe et al.

TABLES

Table 1: Predicted effects of non-synonymous coding changes in *BMP4* on expressed protein function.

Mutation	Location in protein	Case/Control	PolyPhen score	SIFT score
g.6788A>G; p.E93G	Prodomain	Case	0.71 Benign	0.09 Potentially intolerant
g.7935C>T; p.S154F	Prodomain	Control	1.60 Possibly damaging	0.00 Intolerant
g.8147A>G; p.T225A	Prodomain	Control	0.74 Benign	0.56 Tolerant
g.8150C>T; p.R226W	Prodomain	Case/Control	2.09 Probably damaging	0.01 Intolerant
g.8330C>T; p.R286X	Prodomain	Case	N/A	N/A
g.8334G>A; p.R287H	Prodomain	Case	0.43 Benign	0.37 Tolerant
g.8449G>T; p.W325C	Active domain	Case	4.37 Probably damaging	0.00 Intolerant
g.8592G>C; p.C373S	Active domain	Case	3.87 Probably damaging	0.00 Intolerant
g.8615A>G; p.I381V	Active domain	Control	1.20 Benign	0.06 Potentially intolerant

g, position of mutation within genomic DNA (GenBank reference sequence NM_001202.3); N/A, Not applicable; p, position of mutation within protein (GenBank reference sequence NP_001193.2); PolyPhen, *polymorphism phenotyping*; SIFT, sorts *intolerant* from *tolerant*

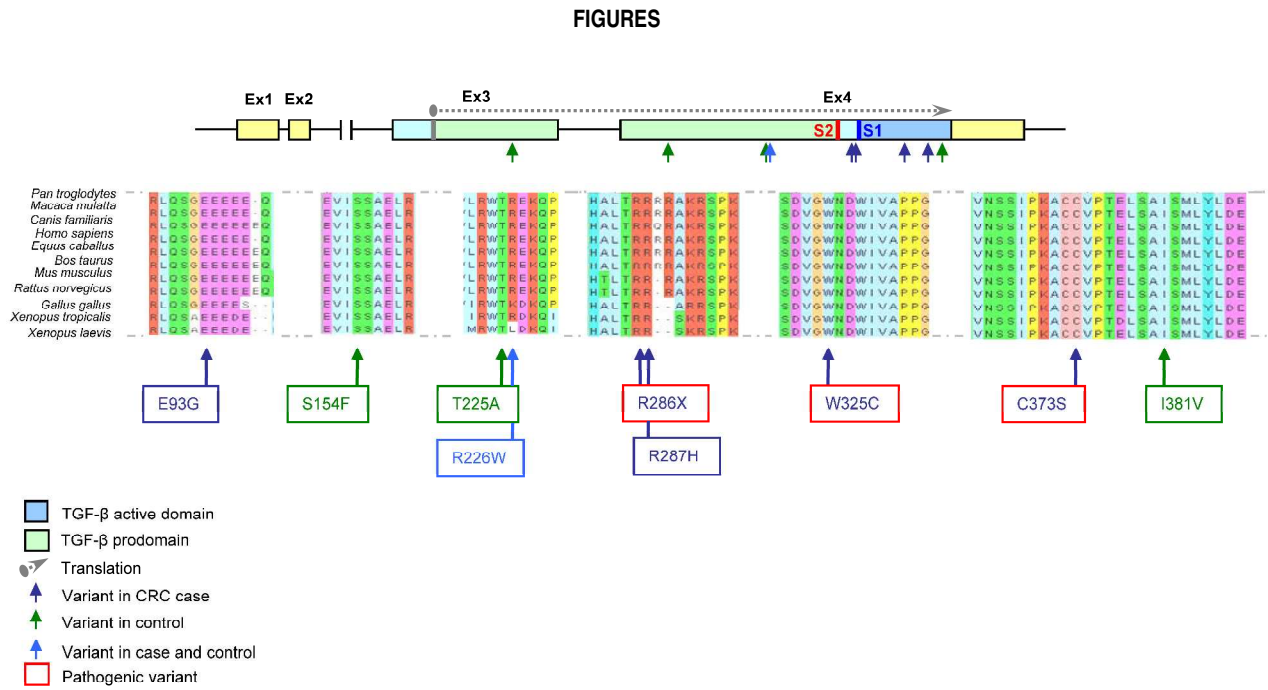


Figure 1: Amino acid sequence alignment of vertebrate *BMP4*.

The upper figure shows a schematic representation of the human *BMP4* gene (NM_001202.3) with the positions of exons and their translated protein domains. Both exon 3 and exon 4 are in the translated region (grey arrow). Filled green is the TGF beta prodomain and violet is the TGF beta active domain. Positions of mutations identified are indicated for cases (dark blue arrows) and controls (green arrows). The position of R226W seen in both cases and controls is indicated by a light blue arrow. The S1 and S2 furin cleavage sites are also shown. Comparative amino acid alignment follows the order of Pan troglodytes (Chimpanzee [XP_509954]), Macaca mulatta (Rhesus monkey [XP_001084801]), Canis familiaris (Dog [XP_851628]), Homo sapiens (Human [NP_001193]), Equus caballus (Horse [NP_001157442]), Bos taurus (Cow [NP_001039342]), Mus musculus (Mouse [NP_031580.1]), Rattus norvegicus (Rat [NP_036959]), Gallus gallus (Chicken [NP_990568]), Xenopus tropicalis (Western clawed Frog [NP_001017034]), and Xenopus laevis (African clawed frog [NP_001081501]).

12 Lubbe et al.

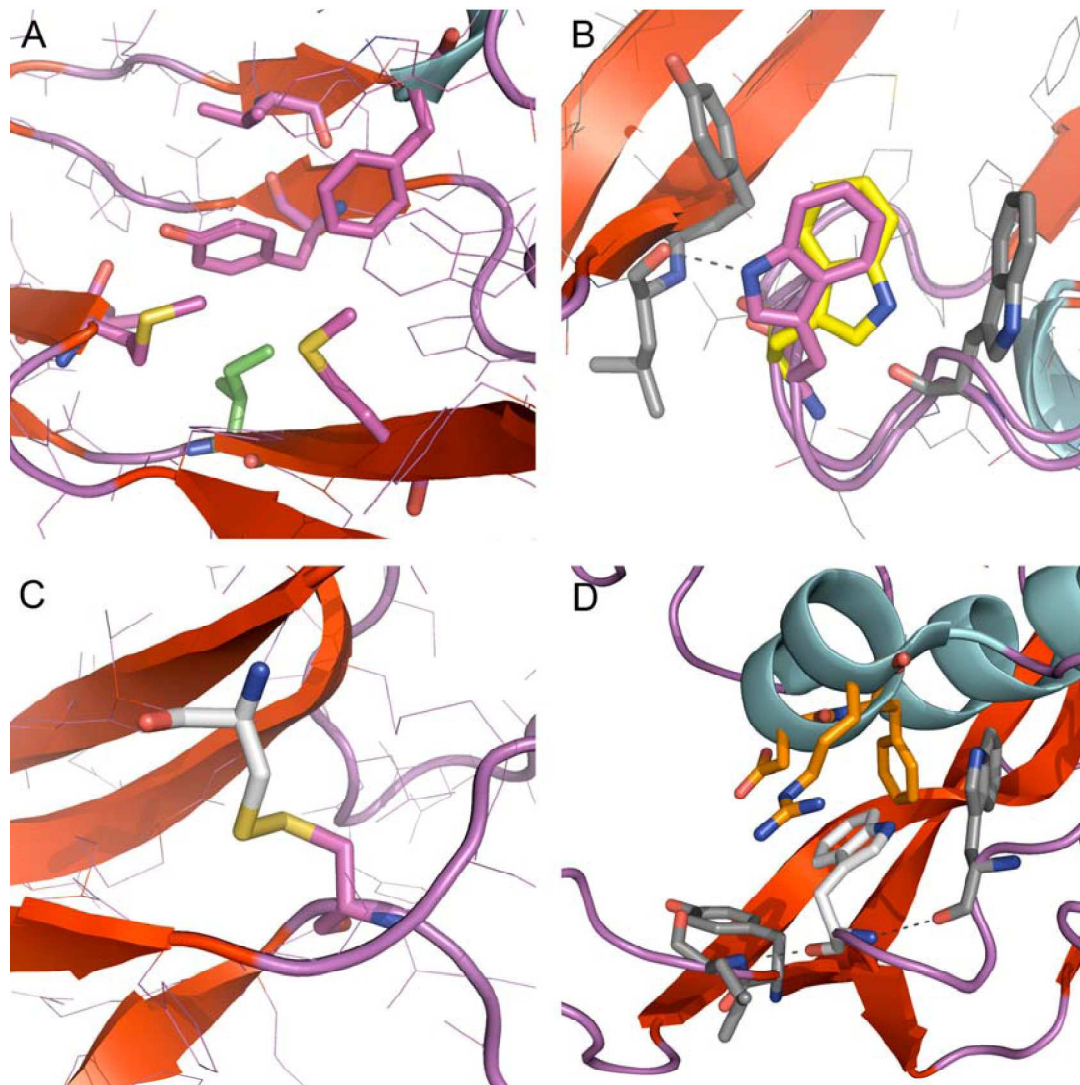


Figure 2: Homology modelling of BMP4 using the structure of BMP2.

A: Isoleucine 381 (green) within a lipophilic pocket (purple); B: The interactions formed by tryptophan 325 in two different conformations (purple and yellow) with tryptophan 322 and tyrosine 385 (grey); C: The disulphide bridge formed by cysteine 373 (white); D: The interacting residues with tryptophan 325 (white), BMP4 (grey) and BMPR1A (orange).

SUPPLEMENTARY TABLES

Supplementary Table 1: Oligonucleotide primer pairs

Mutation identification	Exon 3	A-F	GGCGCTCAGGATACTCAAGA
		A-R	CTTACTTTTCAGGCCGTGCAT
		B-F	AAACCCGACAAACACACAGC
		B-R	CCTAGCAAGAGTGCCGTCAT
	Exon 4	A-F	TCTCAGGGATGCTGCTGAGG
		A-R	AAGAGGGAGAGGGTGGTTGT
		B-F	ATGGCCAAAGGTGACCAG
		B-R	CCCAACCCTGAGCTATCTCTT
		C-F	CCTCAAGGACTGCCTGATCTC
		C-R	GGCTAGCCATTGAGGTGACT
		D-F	CAGGTACCACCTTTTGACTTCC
		D-R	CTGGTCAATTCTGTCAATTCCA
Loss of heterozygosity assessment	p.R286X	F	TCGTTACCTCAAGGGAGTGG
		R	CGCTGTGAGTGATGCTTAGG
	p.C373S	F	TGACCACCTCAACTCAACCA
		R	CATCCAGGTACAGCATGGAG
CpG methylation assessment	Pyrosequencing	1-F	GGATGCCCACTCACCTAGCTT
		1-R	TTTCTGGGGATGGGAGCC*
		1-S	GCCCACTCACCTAGC
		2-F	*AACCTGCTCCAGCTAGGTGTTCT
		2-R	CTACCAAGGGCTTCTCTTGTTC
		2-S	TCAGCCCAAGACCCC
		3-F	TAGGGGCATTGGCAGGTA
		3-R	GCAGAAGCCCTTTAAAAAGCC*
		3-S	ACCAACACCTCAGGTC
		4-F	AGAAAGGAAATCCCACCATGT
		4-R	AGCAAATACTCCTTCAAGAATTT*
		4-S	GGAAATCCCACCATGT
		5-F	TAATGAGACTCCACCGCAGACA
		5-R	TGAAGCCAGAGGATTTGGGG*
		5-S	GCTCCCAGGGCTACT
		6-F	*AGGAGCTCATGGCTCTGC
		6-R	CATCAGCATTTCGGTTACCAG
		6-S	CAGGTATCAAACCTAGCATGG

14 Lubbe et al.

Sequencing		
	1-F	CATCGGGGAGACAAGCTAGA
	1-R	CTGGAGGGGAGGATGTGG
	2-F	AGCAGGACTGCGCTCTCTAC
	2-R	GGCAGGAGAGCAGAAACAAG
	3-F	AAAGTAAAGGATCGAACAGCTCA
	3-R	GCCTCCGTCTGCTTTCTCTA
	4-F	AATGTGGCCGAGGTTTTACA
	4-R	GGACATCCCAGTAACTGCTTG
	5-F	CTCCAGCCCCTCGGAGT
	5-R	GAGACGCAGTCCCTTCAGTG
	6-F	ATGACGGCACTCTTGCTAGG
	6-R	CCTGGTAACCGAATGCTGAT

* Biotin label; F, forward primer; p, position of mutation within protein (GenBank reference sequence NP_001193.2); R, reverse primer; S, sequencing primer.

All oligonucleotide primer pairs for *BMP4* were designed using GenBank reference sequence NM_001202.3

Unable to Convert Image

The dimensions of this image (in pixels) are too large to be converted. For this image to convert, the total number of pixels (height x width) must be less than 40,000,000 (40 megapixels).

For Peer Review

1
2
3
4
5
6
7
8
9
10
11
12
13
14
15
16
17
18
19
20
21
22
23
24
25
26
27
28
29
30
31
32
33
34
35
36
37
38
39
40
41
42
43
44
45
46
47
48
49
50
51
52
53
54
55
56
57
58
59
60

1
2
3
4
5
6
7
8
9
10
11
12
13
14
15
16
17
18
19
20
21
22
23
24
25
26
27
28
29
30
31
32
33
34
35
36
37
38
39
40
41
42
43
44
45
46
47
48
49
50
51
52
53
54
55
56
57
58
59
60

Unable to Convert Image

The dimensions of this image (in pixels) are too large to be converted. For this image to convert, the total number of pixels (height x width) must be less than 40,000,000 (40 megapixels).

For Peer Review