



HAL
open science

Identification of FOXP1 and SNX2 as novel ABL1 fusion partners in acute lymphoblastic leukaemia

Thomas Ernst, Joannah Score, Claire Hidalgo-Curtis, Michael Wn Deininger, Peter M Lackie, William B Ershler, John M Goldman, Nicholas C.P. Cross, Francis Hector Grand

► **To cite this version:**

Thomas Ernst, Joannah Score, Claire Hidalgo-Curtis, Michael Wn Deininger, Peter M Lackie, et al.. Identification of FOXP1 and SNX2 as novel ABL1 fusion partners in acute lymphoblastic leukaemia. *British Journal of Haematology*, 2011, 153 (1), pp.43. <10.1111/j.1365-2141.2010.08457.x>. <hal-00612830>

HAL Id: hal-00612830

<https://hal.science/hal-00612830v1>

Submitted on 1 Aug 2011

HAL is a multi-disciplinary open access archive for the deposit and dissemination of scientific research documents, whether they are published or not. The documents may come from teaching and research institutions in France or abroad, or from public or private research centers.

L'archive ouverte pluridisciplinaire **HAL**, est destinée au dépôt et à la diffusion de documents scientifiques de niveau recherche, publiés ou non, émanant des établissements d'enseignement et de recherche français ou étrangers, des laboratoires publics ou privés.



HAL Authorization



Identification of FOXP1 and SNX2 as novel ABL1 fusion partners in acute lymphoblastic leukaemia



Journal:	<i>British Journal of Haematology</i>
Manuscript ID:	BJH-2010-00999
Manuscript Type:	Short Reports
Date Submitted by the Author:	24-Jun-2010
Complete List of Authors:	Ernst, Thomas; Universitätsklinikum Jena, Klinik für Innere Medizin II Score, Joannah; University of Southampton, Wessex Regional Genetics Laboratory Hidalgo-Curtis, Claire; University of Southampton, Wessex Regional Genetics Laboratory Deininger, Michael; Oregon Health and Science University, Hematology Lackie, Peter; University of Southampton, Infection Inflammation and Immunity Ershler, William; Harbor Hospital, Hematology/Immunology Unit Goldman, John; Imperial College London, Haematology Cross, Nicholas; University of Southampton, Salisbury District Hospital, Wessex Regional Genetics Laboratory Grand, Francis; University of Southampton, Wessex Regional Genetics Laboratory
Key Words:	ABL, ACUTE LEUKAEMIA, IMATINIB

1
2
3 **Identification of *FOXP1* and *SNX2* as novel *ABL1* fusion partners in acute**
4
5
6 **lymphoblastic leukaemia**
7
8
9

10
11 Thomas Ernst¹, Joannah Score², Michael Deininger³, Claire Hidalgo-Curtis², Peter Lackie⁴,
12
13 William B Ershler⁵, John M Goldman⁶, Nicholas C.P. Cross² and Francis H. Grand²
14
15
16
17

18
19 ¹Universitätsklinikum Jena, Klinik für Innere Medizin II
20 Jena, Germany
21

22
23 ²Wessex Regional Genetics Laboratory, University of Southampton, Salisbury, United
24 Kingdom
25

26
27 ³Oregon Health and Science University, Hematology
28 Portland, Oregon, United States
29

30
31 ⁴University of Southampton, Infection Inflammation and Immunity
32 Southampton, United Kingdom
33

34
35 ⁵Harbor Hospital, Hematology/Immunology Unit
36 Baltimore, Maryland, United States
37

38
39 ⁶Harbor Hospital, Hematology/Immunology Unit
40 Baltimore, Maryland, United States
41
42
43
44

45 Keywords: ABL1, FOXP1, SNX2, ALL, acute lymphoblastic leukaemia
46
47
48
49

50 Running title: *FOXP1-ABL1* and *SNX2-ABL1* fusion genes in B-ALL
51
52
53
54
55
56
57
58
59
60

1
2
3
4
5
6 **Corresponding author:**
7

8 Francis H. Grand, PhD
9

10 Wessex Regional Genetics Laboratory
11

12 University of Southampton
13

14 Salisbury SP2 8BJ
15

16 United Kingdom
17
18
19

20
21
22 Tel: +(44) 1722 429080
23

24 Fax: +(44) 1722 338095
25

26
27 E-Mail: F.H.Grand@soton.ac.uk
28
29
30
31
32
33
34
35
36
37
38
39
40
41
42
43
44
45
46
47
48
49
50
51
52
53
54
55
56
57
58
59
60

Summary

We have identified two novel *ABL1* fusion genes in two patients with B-cell acute lymphoblastic leukaemia associated with a t(3;9)(p12;q34) and a t(5;9)(q23;q34), respectively. Molecular analysis revealed a *FOXP1-ABL1* fusion for the t(3;9) and a *SNX2-ABL1* fusion for the t(5;9). The fusions were confirmed by specific amplification of the genomic breakpoints using reverse transcription polymerase chain reaction (RT-PCR). The identification of ALL with rare *ABL1* fusion partners is important because the leukaemia may respond to tyrosine kinase inhibitors in the same way as ALL patients with a classical *BCR-ABL1* fusion gene.

Introduction

Constitutively activated mutants of the non-receptor tyrosine kinase ABL1 play a central role in the pathogenesis of clinically and morphologically distinct chronic and acute leukaemias (Chase & Cross, 2006). By far the most frequent and best-studied ABL1 fusion gene is *BCR-ABL*, which results from an acquired reciprocal $t(9;22)(q34;q11)$ (Shtivelman *et al*, 1985; Ben-Neriah *et al*, 1986). The $t(9;22)(q34;q11)$ is found in virtually all patients with chronic myeloid leukaemia (CML), in approximately 20% of adults with B-cell acute lymphoblastic leukaemia (ALL), and in rare cases of acute myeloid leukaemia (Fröhling & Döhner 2008). The second most frequent and biologically distinct *ABL1* fusion gene is *NUP214-ABL1* in T-ALL (Graux *et al*, 2004). Remarkably, this fusion is generated by circularisation of the 500 kb genomic region from *ABL1* to *NUP214* and subsequent extrachromosomal (episomal) amplification. Other *ABL1* fusion genes have been described but are uncommon. The *ETV6-ABL1* fusion gene is the product of a $t(9;12)(q34;p13)$ and is found in occasional patients with acute leukaemias or atypical CML (Papadopoulos *et al*, 1995; Golub *et al*, 1996; Andreasson *et al*, 1997). *EML1-ABL1* was found in a single female patient with T-ALL and a cryptic $t(9;14)(q34;q32)$ (De Keersmaecker *et al*, 2005). Recently, *RCSD1*, *ZMIZ1* and *SFPQ* were identified as novel *ABL1* fusion partners in single cases of B-ALL (De Braekeleer *et al*, 2007; Soler *et al*, 2008; Hidalgo-Curtis *et al*, 2008).

Imatinib is a specific inhibitor of several tyrosine kinases including ABL1 and induces long-term complete haematologic and cytogenetic remissions in most patients with chronic phase CML (Druker *et al*, 2001; Deininger *et al*, 2009). However, a substantial proportion of patients with advanced phase CML or *BCR-ABL1* positive ALL are initially refractory to

1
2
3 imatinib treatment or lose imatinib sensitivity over time and relapse (Apperley, 2007; Pui *et*
4 *al*, 2008). More potent second-generation ABL1 kinase inhibitors (e.g. dasatinib, nilotinib,
5
6 *al*, 2008). More potent second-generation ABL1 kinase inhibitors (e.g. dasatinib, nilotinib,
7
8 bosutinib) have been developed for the treatment of imatinib-resistant patients and emerging
9
10 clinical data indicate that these drugs have promising efficacy (Weisberg *et al*, 2007, Gruber
11
12 *et al*, 2009). Both, first- and second-generation ABL1 kinase inhibitors are expected to
13
14 achieve similar remission rates in patients with *ABL1* fusion genes other than *BCR-ABL1*.
15
16 However, because the majority of these cases have only been reported in individual patients,
17
18 insufficient data on the *in-vivo* efficacy of tyrosine kinase inhibitors are currently available.
19
20 *NUP214-ABL* and *EML1-ABL* have been shown to be imatinib sensitive *in-vitro* and two
21
22 single case reports documented dasatinib sensitivity for *NUP214-ABL* and *RCSD1-ABL in-*
23
24 *vivo* (Deenik *et al*, 2009; Mustjoki *et al*, 2009).
25
26
27
28
29
30
31
32

33 In this study, we have investigated two B-ALL patients with acquired chromosomal
34
35 rearrangements each involving the chromosomal band 9q34 and identified two novel *ABL1*
36
37 fusion genes potentially sensitive to imatinib treatment. Although these fusion genes occur
38
39 rarely, their identification is essential in order to detect patients in whom targeted treatment
40
41 with tyrosine kinase inhibitors is likely to be successful. Furthermore, molecular definition of
42
43 novel fusion partners for known kinases remains important both for rapid molecular diagnosis
44
45 of new cases and for monitoring an individual patient's response to treatment.
46
47
48
49
50
51
52
53
54
55
56
57
58
59
60

Patients and methods

Patients

Case 1: *FOXP1-ABL1* male/female B-ALL with t(3;9)(p12;q34).

A 16-year old caucasian woman was diagnosed with pre B cell acute lymphoblastic leukaemia in October 2001, with an initial white blood cell count of >50,000/nL. Her past medical history was significant only for recurrent deep venous thrombosis secondary to protein S deficiency. Bone marrow cytogenetics was 46XX,t(3;9)(p12;q34)[20]. FISH revealed loss of one copy of the p16 locus. Based on her age and an initial white blood count she was considered high risk. Treatment was initiated according to the standard arm for high risk patients of the COALL-97 protocol of the German Cooperative Study Group for Childhood Acute Lymphoblastic Leukaemia (COALL). Therapy was complicated by recurrent DVT, catheter-associated septicaemia and steroid-induced diabetes mellitus. She achieved a complete response and in February 2002 was consolidated with a haplo-identical transplant from her father. Complications included grade III GvHD of the skin and fungal pneumonia, both of which resolved on therapy. On last follow-up in spring of 2010 she continued in CR, with excellent functionality (attending medical school).

Case 2: *SNX2-ABL1* male B-ALL with t(5;9)(q23;q34).

The patient was diagnosed in April 2004 aged 29 when he presented with a WBC of $161 \times 10^9/l$. The cell showed a classical B-cell immunophenotype. Bone marrow cytogenetics showed a t(5;9)(q23;q34) and a 20q-. FISH showed evidence of the ABL gene on both derivative chromosomes. BCR was apparently not involved. He responded well to initial

1
2
3 chemotherapy but relapsed early. He then received hyper-C-VAD and again responded. He
4
5 relapsed again at the end of 2004 and was started on imatinib, it was transient and despite
6
7 other supportive measures including hydroxyurea he died in Spring 2005.
8
9

10 11 12 13 14 15 *Fluorescence In Situ Hybridization (FISH)*

16
17 To our knowledge, no other cases have been reported with a t(3;9)(p14;q34) or
18
19 t(5;9)(q23;q34). For the t(5;9) FISH was performed using the BCR-ABL probe from Abbott.
20
21
22
23
24
25

26 27 *5' Rapid Amplification of cDNA Ends (5' RACE) PCR*

28
29 Partner genes were identified using the Gene-Racer™ Kit (Invitrogen, Paisley, UK). Briefly,
30
31 ~ 5 µg of total RNA extracted using the Qiagen RNeasy kit (Qiagen, Boundary Court, UK)
32
33 was dephosphorylated, decapped, and ligated to the GeneRacer™ RNA oligo according to the
34
35 manufacturer's instructions. The ligated RNA was reverse transcribed using Superscript II™
36
37 reverse transcriptase (Invitrogen, Paisley, UK) and random primers (100 ng). Single step 5'
38
39 RACE PCR was performed using the 5' GeneRacer™ primer from the kit in combination with
40
41 a reverse primer from ABL1 exon 4 (1R: 5'-cca ccg ttg aat gat gat gaa cc-3'). The PCR cycles
42
43 were designed to amplify fragments up to 3 kb, with an annealing temperature of 66°C using
44
45 the High Fidelity PCR Master kit (Roche, Mannheim, Germany) according to the
46
47 manufacturer's instructions. Products were cloned with the TOPO TA Cloning Kit for
48
49 Sequencing (Invitrogen, Paisley, UK) and sequenced.
50
51
52
53
54
55
56
57
58
59

60 *RT-PCR Methods*

1
2
3 Case 1: The presence of FOXP1-ABL1 mRNA was confirmed on random hexamer reverse
4 transcribed cDNA using primers to FOXP1 exon 18 (5'-gca gta tgg aca gtg gat gaa gta-3')
5
6 with the reverse ABL1 exon 4 (see above). These primers were also used to amplify the
7
8 genomic breakpoint.
9
10

11
12
13
14
15 Case 2: The presence of SNX2-ABL1 mRNA was confirmed on random hexamer reverse
16 transcribed cDNA using primers to SNX2 1F new (5'-aag agt atg tct gct ccc gtg atc tt-3') with
17
18 the reverse ABL1 exon 4. These primers were also used to amplify the genomic breakpoint.
19
20
21

22 23 24 25 **Results**

26 27 28 29 *Characterization of the t(3;9)(p14;q34)*

30
31 FISH using the probes that immediately flank the ABL1 gene hybridized to the normal copy
32 of chromosome 9, also the der(9) and the der(3), indicating that the translocation targeted
33 ABL1; however, no BCR-ABL1 fusion was seen by FISH or RT-PCR. Most ABL1 fusions
34 reported to date result in the partner gene fusing to ABL1 exons 2 or 3. To identify the t(3;9)
35 partner, we, therefore, performed 5'-RACE PCR from both these exons. These initial attempts
36 failed despite the fact that normal 5' ABL1 sequence was readily obtained (data not shown).
37
38 5' RACE primers were subsequently designed in ABL1 exon 4 (ENST00000318560).
39
40 Sequencing of the products revealed several clones in which FOXP1 (ENST00000318789)
41 exon 19 was fused in frame to ABL1 exon 4.
42
43
44
45
46
47
48
49
50
51
52

53 54 55 *Confirmation of the FOXP1-ABL1 fusion*

56
57 The presence of the FOXP1-ABL1 fusion was confirmed initially by RT-PCR. The reciprocal
58 ABL1-FOXP1 product was detectable by single step PCR. Cloning and sequencing revealed
59
60

1
2
3 that the reciprocal product fuses ABL1 exon 3 to an alternative RNA isoform (NM_032682)
4 of FOXP1. As shown in Figure 1a and 1b, the FOXP1-ABL1 fusion was specifically
5 amplified from patient cells by single step PCR, but was not detectable in normal controls. To
6
7
8
9
10 further confirm the presence of the fusion the genomic breakpoint was amplified by long
11
12
13 PCR, cloned, and sequenced.

14 15 16 17 *Characterization of the t(5;9)(q23;q34)*

18
19 FISH using the Abbott BCR-ABL1 probes that immediately flank the ABL1 gene hybridized
20 to the normal copy of chromosome 9, also the der(9) and the der(5), indicating that the
21
22
23 translocation targeted ABL1; however, no BCR-ABL1 fusion was seen by FISH or RT-PCR.
24
25
26 5' RACE PCR from ABL1 exons 2 and 3 failed, after the previous cloning of the t(3;9)
27
28 translocation, 5'-RACE PCR primers were designed in ABL1 exon 4 (ENST00000318560).
29
30
31 Sequencing of the products revealed several clones in which SNX2 (ENST00000379516)
32
33
34 exon 3 was fused in frame to ABL1 exon 4.

35 36 37 38 *Confirmation of the SNX2-ABL1 fusion*

39
40 The presence of the SNX2-ABL1 fusion was confirmed initially by RT-PCR. The reciprocal
41
42
43 *ABL1-SNX2* product was not detectable by single step PCR. As shown in Figure 2a and 2b,
44
45
46 the *SNX2-ABL1* fusion was specifically amplified from patient cells by single step PCR, but
47
48
49 was not detectable in normal controls. To further confirm the presence of the fusion the
50
51
52 genomic breakpoint was amplified by long PCR, cloned, and sequenced (data not shown).
53
54
55
56
57
58
59
60

Discussion

This study has characterised the genomic breakpoints in two B-ALL cases with chromosome 9q34 rearrangements and identified *FOXP1* at 3p14 and *SNX2* at 5q23 as novel *ABL1* fusion partners. This brings the number of known *ABL1* partner genes to nine. In the chimeric protein, N-terminal sequences of *ABL1* are replaced by amino-acids derived from the partner protein that provides dimerisation motifs essential for the transforming activity of *ABL1*. Fusion genes involving *ABL1* are excellent drug targets as exemplified by the activity of imatinib in *BCR-ABL1* positive diseases, particularly CML. The clinical course of patients with *ABL1* fusion genes other than *BCR-ABL1* may be different and highly dependent on the underlying disease. Response rates and risk of relapse may be similar to CML in patients with chronic phase myeloproliferative neoplasms or similar to *BCR-ABL1* positive ALL in patients with acute leukaemias, respectively. As the fusions described here were referred specifically for investigation of 9q rearrangements and were not part of a series that underwent systemic cytogenetic investigation, it is not possible to accurately determine the frequency of these abnormalities. However, we estimate that they probably account for <1% of ALL cases.

The *ABL1* gene is located on chromosome band 9q34 and encodes a ubiquitously cytoplasmic and nuclear protein tyrosine kinase that has been implicated in processes of cell differentiation, cell division, cell adhesion, and stress response. Simplified, the structure of *ABL1* consists of N-terminal SH3 and SH2 domains (which mediate binding to proline-rich and phosphotyrosine protein ligands, respectively), a catalytic tyrosine kinase domain that contains phosphotransferase activity and a DNA-binding domain with yet largely unknown effects and a C-terminal actin-binding domain. Most previously described fusion genes involving *ABL1* fuse with *ABL1* exon 2. However, similar to the recently described fusion

1
2
3 partners *SFPQ* and *RCSD1* (Hidalgo-Curtis *et al*, 2008; Mustjoki *et al*, 2009) both partner
4
5 genes described here fuse to *ABL1* exon 4. These are structurally unusual *ABL1* fusion
6
7 proteins as the SH3 and SH2 domains are not included. Mouse models with BCR-ABL1
8
9 constructs in which the SH2 domain was inactivated have shown that the fusion protein
10
11 retained the ability to cause leukaemia in mice (Roumiantsev *et al*, 2001).
12
13
14
15

16
17 The *FOXP1* gene is located at 3p14 and encodes a member of the forkhead box (FOX) family
18
19 of transcription factors with diverse functions in development, metabolism, organogenesis and
20
21 cancer (Hannenhalli & Kaestner, 2009). *FOXP1* was first cloned from the mouse B-cell
22
23 leukaemia cell line BCL1 and later described to be an essential transcriptional regulator of B
24
25 lymphopoiesis via direct regulation of the B-cell specific Erag enhancer (Li & Tucker, 1993;
26
27 Hu *et al*, 2006). *FOXP1* has been described as a recurrent translocation partner of the IGH
28
29 gene in a subset of MALT lymphomas and diffuse large B-cell lymphomas with
30
31 t(3;14)(p14;q32) (Streubel *et al*, 2005; Wlodarska *et al*, 2005). Furthermore, *FOXP1* was
32
33 identified as a translocation partner of *PAX5* in a single case of paediatric B-ALL (Mullighan
34
35 *et al*, 2007). In contrast to previously published studies, we found *FOXP1* as the 5' partner of
36
37 the fusion gene. Nearly the entire *FOXP1* gene including the forkhead domain was fused in 5'
38
39 position to *ABL1*.
40
41
42
43
44
45
46
47

48 The *SNX2* gene is located at 5q23 and belongs to the sortin nexins (SNX) family that function
49
50 within the endocytic network, including endocytosis, endosomal sorting and endosomal
51
52 signalling (Cullen, 2008). *SNX2* is expressed at high levels in CD34 positive bone marrow
53
54 cells and thought to heterodimerise with *SNX1* in a retromer protein complex. The retromer is
55
56 a vesicle coat complex that helps in protein sorting between the Golgi and endosomes, playing
57
58 a key role in protecting some receptors from lysosomal destruction (Seaman, 2005). The
59
60 hallmark of SNX family is the presence of a PX domain - a sequence of approximately 100-

1
2
3 130 amino acids that has been shown to bind various phosphatidylinositol phosphates, thereby
4
5 potentially targeting these proteins to specific cellular membranes that are enriched in these
6
7 phospholipids (Worby & Dixon, 2002). As described above, constitutive activation of ABL
8
9 fusion genes is mediated by an oligomerisation domain in the partner protein. The *SNX2-*
10
11 *ABL1* fusion gene is unusual as it lacks a clearly recognisable dimerisation motif. The N-
12
13 terminal domain of SNX2 - without the PX domain - is fused to ABL1 exon 4.
14
15
16
17
18
19

20 Although rare the potential sensitivity to imatinib implies that these fusions should be
21
22 searched for in acute leukaemia. The screen for such uncommon, but clinically significant
23
24 fusion transcripts can easily be included in multiplex PCR panels used in routine diagnostic
25
26 work-ups. Targeted therapy has revolutionised the treatment of CML and there is considerable
27
28 optimism that targeting *ABL1* fusion genes other than *BCR-ABL1* will bring at least short term
29
30 benefits for those patients. On the other hand, targeted therapy is very expensive and it will be
31
32 important to develop markers to identify those patients who are most likely to benefit from
33
34 treatment.
35
36
37
38
39
40
41
42
43
44
45

46 **Acknowledgements**

47
48 TE was supported by the Dr Mildred Scheel Stiftung für Krebsforschung (Deutsche
49
50 Krebshilfe e.V.).
51
52
53
54
55
56
57
58
59
60

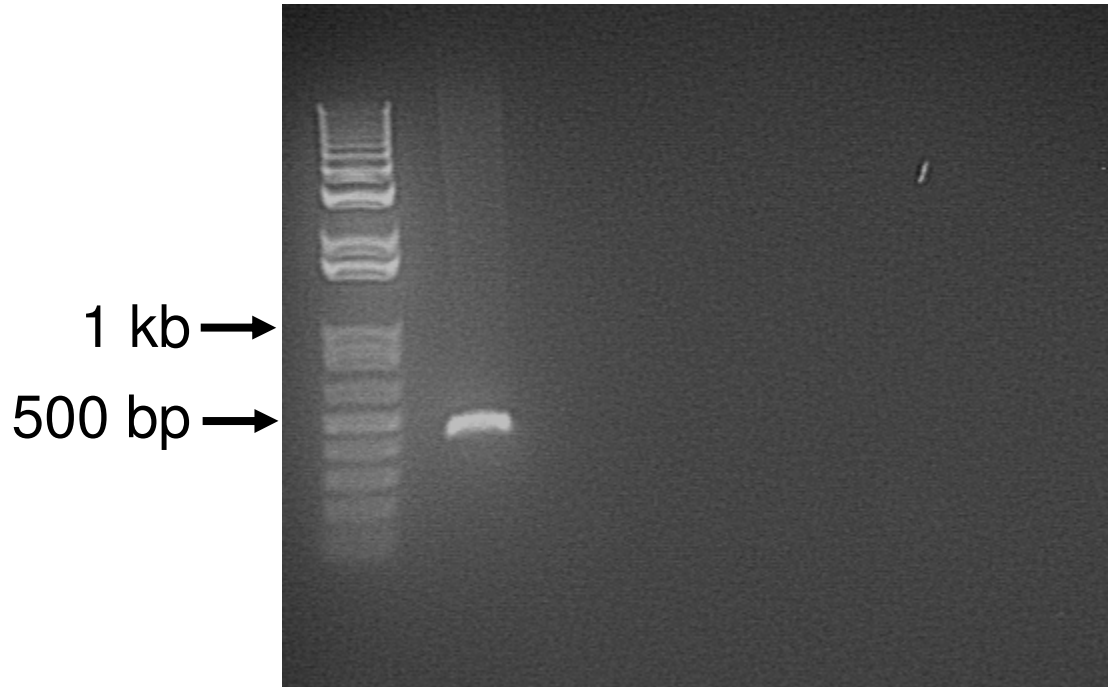
References

- 1
2
3
4
5
6 Andreasson, P., Johansson, B., Carlsson, M., Jarlsfelt, I., Fioretos, T., Mitelman, F. &
7 Hoglund, M. (1997) BCR/ABL-negative chronic myeloid leukemia with ETV6/ABL
8 fusion. *Genes Chromosomes Cancer*, **20**, 299-304.
- 9 Apperley, J.F. (2007) Part I: mechanisms of resistance to imatinib in chronic myeloid
10 leukaemia. *Lancet Oncol*, **8**, 1018-1029.
- 11 Ben-Neriah, Y., Daley, G.Q., Mes-Masson A.M., Witte, O.N. & Baltimore, D. (1986)
12 The chronic myelogenous leukemia-specific P210 protein is the product of the
13 bcr/abl hybrid gene. *Science*, **233**, 212-214.
- 14 Chase, A. & Cross, N.C. (2006) Signal transduction therapy in haematological malignancies:
15 identification and targeting of tyrosine kinases. *Clin Sci (Lond)*, **111**, 233-249.
- 16 Cullen, P.J. (2008) Endosomal sorting and signalling: an emerging role for sorting nexins. *Nat*
17 *Rev Mol Cell Biol*, **9**, 574-582.
- 18 De Braekeleer, E., Douet-Guilbert, N., Le Bris, M.J., Berthou, C., Morel, F. & De Braekeleer,
19 M. (2007) A new partner gene fused to ABL1 in a t(1;9)(q24;q34)-associated B-cell
20 acute lymphoblastic leukemia. *Leukemia*, **21**, 2220-2221.
- 21 De Keersmaecker, K., Graux, C., Odero, M.D., Mentens, N., Somers, R., Maertens, J.,
22 Wlodarska, I., Vandenberghe, P., Hagemeyer, A., Marynen, P. & Cools, J. (2005)
23 Fusion of EML1 to ABL1 in T-cell acute lymphoblastic leukemia with cryptic
24 t(9;14)(q34;q32). *Blood*, **105**, 4849-4852.
- 25 Deenik, W., Beverloo, H.B., van der Poel-van de Luytgaarde, S.C., Wattel, M.M., van Esser,
26 J.W., Valk, P.J. & Cornelissen, J.J. (2009) Rapid complete cytogenetic remission after
27 upfront dasatinib monotherapy in a patient with a NUP214-ABL1-positive T-cell
28 acute lymphoblastic leukemia. *Leukemia*, **23**, 627-629.
- 29 Deininger, M., O'Brien, S.G., Guilhot, F., Goldman, J.M., Hochhaus, A., Hughes, T.P.,
30 Radich, J.P., Hatfield, A.K., Mone, M., Filian, J., Reynolds, J., Gathmann, I., Larson,
31 R.A. & Druker, B.J. (2009) International randomized study of interferon vs STI571
32 (IRIS) 8-year follow up: sustained survival and low risk for progression or events in
33 patients with newly diagnosed chronic myeloid leukemia in chronic phase (CML-CP)
34 Treated with Imatinib. *Blood (ASH annual meeting abstracts)*, **114**, [1126].
- 35 Druker, B.J., Talpaz, M., Resta, D.J., Peng, B., Buchdunger, E., Ford, J.M., Lydon, N.B.,
36 Kantarjian, H., Capdeville, R., Ohno-Jones, S. & Sawyers, C.L. (2001) Efficacy and
37 safety of a specific inhibitor of the BCR-ABL tyrosine kinase in chronic myeloid
38 leukemia. *N Engl J Med*, **344**, 1031-1037.
- 39 Frohling, S. & Dohner, H. (2008) Chromosomal abnormalities in cancer. *N Engl J Med*, **359**,
40 722-734.
- 41 Golub, T.R., Goga, A., Barker, G.F., Afar, D.E., McLaughlin, J., Bohlander, S.K., Rowley,
42 J.D., Witte, O.N. & Gilliland, D.G. (1996) Oligomerization of the ABL tyrosine
43 kinase by the Ets protein TEL in human leukemia. *Mol Cell Biol*, **16**, 4107-4116.
- 44 Graux, C., Cools, J., Melotte, C., Quentmeier, H., Ferrando, A., Levine, R., Vermeesch, J.R.,
45 Stul, M., Dutta, B., Boeckx, N., Bosly, A., Heimann, P., Uyttbroeck, A., Mentens, N.,
46 Somers, R., MacLeod, R.A., Drexler, H.G., Look, A.T., Gilliland, D.G., Michaux, L.,
47 Vandenberghe, P., Wlodarska, I., Marynen, P. & Hagemeyer, A. (2004) Fusion of
48 NUP214 to ABL1 on amplified episomes in T-cell acute lymphoblastic leukemia. *Nat*
49 *Genet*, **36**, 1084-1089.
- 50 Gruber, F., Mustjoki, S. & Porkka, K. (2009) Impact of tyrosine kinase inhibitors on patient
51 outcomes in Philadelphia chromosome-positive acute lymphoblastic leukaemia. *Br J*
52 *Haematol*, **145**, 581-597.
- 53 Hannenhalli, S. & Kaestner, K.H. (2009) The evolution of Fox genes and their role in
54 development and disease. *Nat Rev Genet*, **10**, 233-240.
- 55
56
57
58
59
60

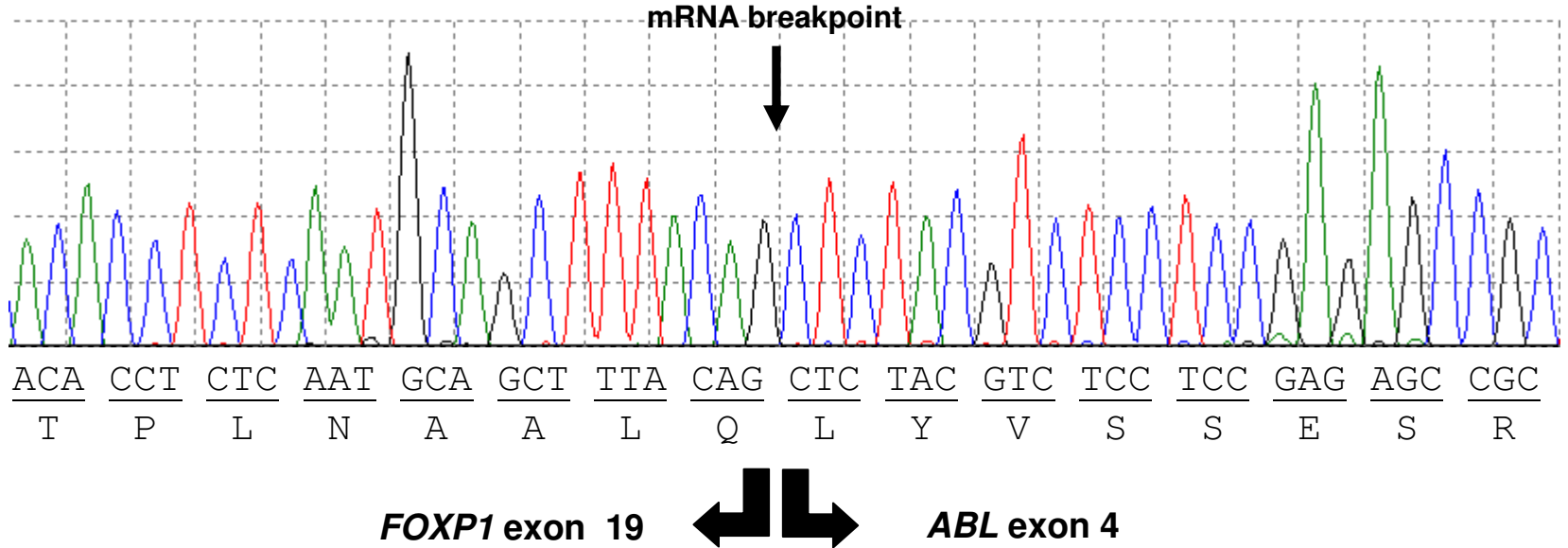
- 1
2
3 Hidalgo-Curtis, C., Chase, A., Drachenberg, M., Roberts, M.W., Finkelstein, J.Z., Mould, S.,
4 Oscier, D., Cross, N.C. & Grand, F.H. (2008) The t(1;9)(p34;q34) and
5 t(8;12)(p11;q15) fuse pre-mRNA processing proteins SFPQ (PSF) and CPSF6 to ABL
6 and FGFR1. *Genes Chromosomes Cancer*, **47**, 379-385.
- 7
8 Hu, H., Wang, B., Borde, M., Nardone, J., Maika, S., Allred, L., Tucker, P.W. & Rao, A.
9 (2006) Foxp1 is an essential transcriptional regulator of B cell development. *Nat*
10 *Immunol*, **7**, 819-826.
- 11
12 Li, C. & Tucker, P.W. (1993) DNA-binding properties and secondary structural model of the
13 hepatocyte nuclear factor 3/fork head domain. *Proc Natl Acad Sci U S A*, **90**, 11583-
14 11587.
- 15
16 Mullighan, C.G., Goorha, S., Radtke, I., Miller, C.B., Coustan-Smith, E., Dalton, J.D.,
17 Girtman, K., Mathew, S., Ma, J., Pounds, S.B., Su, X., Pui, C.H., Relling, M.V.,
18 Evans, W.E., Shurtleff, S.A. & Downing, J.R. (2007) Genome-wide analysis of
19 genetic alterations in acute lymphoblastic leukaemia. *Nature*, **446**, 758-764.
- 20
21 Mustjoki, S., Hernesniemi, S., Rauhala, A., Kahkonen, M., Almqvist, A., Lundan, T. &
22 Porkka, K. (2009) A novel dasatinib-sensitive RCSD1-ABL1 fusion transcript in
23 chemotherapy-refractory adult pre-B lymphoblastic leukemia with t(1;9)(q24;q34).
24 *Haematologica*, **94**, 1469-1471.
- 25
26 Papadopoulos, P., Ridge, S.A., Boucher, C.A., Stocking, C. & Wiedemann, L.M. (1995) The
27 novel activation of ABL by fusion to an ets-related gene, TEL. *Cancer Res*, **55**, 34-38.
- 28
29 Pui, C.H., Robison, L.L. & Look, A.T. (2008) Acute lymphoblastic leukaemia. *Lancet*, **371**,
30 1030-1043.
- 31
32 Roumiantsev, S., de Aos, I.E., Varticovski, L., Ilaria, R.L. & Van Etten, R.A. (2001) The src
33 homology 2 domain of Bcr/Abl is required for efficient induction of chronic myeloid
34 leukemia-like disease in mice but not for lymphoid leukemogenesis or activation of
35 phosphatidylinositol 3-kinase. *Blood*, **97**, 4-13.
- 36
37 Seaman, M.N. (2005) Recycle your receptors with retromer. *Trends Cell Biol*, **15**, 68-75.
- 38
39 Shtivelman, E., Lifshitz, B., Gale, R.P. & Canaani, E. (1985) Fused transcript of abl and bcr
40 genes in chronic myelogenous leukaemia. *Nature*, **315**, 550-554.
- 41
42 Soler, G., Radford-Weiss, I., Ben-Abdelali, R., Mahlaoui, N., Ponceau, J.F., Macintyre, E.A.,
43 Vekemans, M., Bernard, O.A. & Romana, S.P. (2008) Fusion of ZMIZ1 to ABL1 in a
44 B-cell acute lymphoblastic leukaemia with a t(9;10)(q34;q22.3) translocation.
45 *Leukemia*, **22**, 1278-1280.
- 46
47 Streubel, B., Vinatzer, U., Lamprecht, A., Raderer, M. & Chott, A. (2005) T(3;14)(p14.1;q32)
48 involving IGH and FOXP1 is a novel recurrent chromosomal aberration in MALT
49 lymphoma. *Leukemia*, **19**, 652-658.
- 50
51 Weisberg, E., Manley, P.W., Cowan-Jacob, S.W., Hochhaus, A. & Griffin, J.D. (2007)
52 Second generation inhibitors of BCR-ABL for the treatment of imatinib-resistant
53 chronic myeloid leukaemia. *Nat Rev Cancer*, **7**, 345-356.
- 54
55 Wlodarska, I., Veyt, E., De Paepe, P., Vandenberghe, P., Nooijen, P., Theate, I., Michaux, L.,
56 Sagaert, X., Marynen, P., Hagemeyer, A. & De Wolf-Peeters, C. (2005) FOXP1, a
57 gene highly expressed in a subset of diffuse large B-cell lymphoma, is recurrently
58 targeted by genomic aberrations. *Leukemia*, **19**, 1299-1305.
- 59
60 Worby, C.A. & Dixon, J.E. (2002) Sorting out the cellular functions of sorting nexins. *Nat*
Rev Mol Cell Biol, **3**, 919-931.

1
2
3
4
5
6
7
8
9
10
11
12
13
14
15
16
17
18
19
20
21
22
23
24
25
26
27
28
29
30
31
32
33
34
35
36
37
38
39
40
41
42
43
44
45
46
47
48
49

t(3;9) N1 N2 N3 B1 B2



1
2
3
4
5
6
7
8
9
10
11
12
13
14
15
16
17
18
19
20
21
22
23
24
25
26
27
28
29
30
31
32
33
34
35
36
37
38
39
40
41
42
43
44
45
46
47
48
49



1
2
3
4
5
6
7
8
9
10
11
12
13
14
15
16
17
18
19
20
21
22
23
24
25
26
27
28
29
30
31
32
33
34
35
36
37
38
39
40
41
42
43
44
45
46
47
48
49

t(5;9) N1 N2 N3 B1

1 kb →
500 bp →

