



HAL
open science

The Quality of Cancer Care Initiative in the Netherlands

Michel W.J.M. Wouters, Marlies L.E.A. Jansen-Landheer, Cornelis J.H. van de Velde

► **To cite this version:**

Michel W.J.M. Wouters, Marlies L.E.A. Jansen-Landheer, Cornelis J.H. van de Velde. The Quality of Cancer Care Initiative in the Netherlands. *EJSO - European Journal of Surgical Oncology*, 2010, 36, 10.1016/j.ejso.2010.06.004 . hal-00612397

HAL Id: hal-00612397

<https://hal.science/hal-00612397>

Submitted on 29 Jul 2011

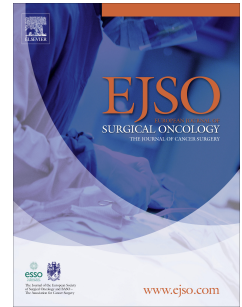
HAL is a multi-disciplinary open access archive for the deposit and dissemination of scientific research documents, whether they are published or not. The documents may come from teaching and research institutions in France or abroad, or from public or private research centers.

L'archive ouverte pluridisciplinaire **HAL**, est destinée au dépôt et à la diffusion de documents scientifiques de niveau recherche, publiés ou non, émanant des établissements d'enseignement et de recherche français ou étrangers, des laboratoires publics ou privés.

Accepted Manuscript

Title: The Quality of Cancer Care Initiative in the Netherlands

Authors: Michel W.J.M. Wouters, MD, Marlies L.E.A. Jansen-Landheer, MD, PhD, Cornelis J.H. van de Velde, MD, PhD



PII: S0748-7983(10)00180-0

DOI: [10.1016/j.ejso.2010.06.004](https://doi.org/10.1016/j.ejso.2010.06.004)

Reference: YEJSO 2992

To appear in: *European Journal of Surgical Oncology*

Received Date: 29 May 2010

Accepted Date: 1 June 2010

Please cite this article as: Wouters MWJM, Jansen-Landheer MLEA, van de Velde CJH. The Quality of Cancer Care Initiative in the Netherlands, *European Journal of Surgical Oncology* (2010), doi: 10.1016/j.ejso.2010.06.004

This is a PDF file of an unedited manuscript that has been accepted for publication. As a service to our customers we are providing this early version of the manuscript. The manuscript will undergo copyediting, typesetting, and review of the resulting proof before it is published in its final form. Please note that during the production process errors may be discovered which could affect the content, and all legal disclaimers that apply to the journal pertain.

The Quality of Cancer Care Initiative in the Netherlands

Michel WJM Wouters MD¹, Marlies LEA Jansen-Landheer, MD, PhD², Cornelis JH van de Velde, MD, PhD^{3,4}

On behalf of the 'Quality of cancer care' task force of the Signalling Committee Cancer of the Dutch Cancer Society (the committees full report is available on www.kwfkankerbestrijding.nl)

¹Surgical Oncologist, the Netherlands Cancer Institute – Antoni van Leeuwenhoek hospital, Amsterdam, The Netherlands; ² CEO of Comprehensive Cancer Centre Amsterdam, Amsterdam, The Netherlands; ³ Chair of Quality of Cancer Care task force of the Dutch Cancer Society, Amsterdam, The Netherlands; ⁴ Surgical Oncologist at the Leiden University Medical Center, Leiden, The Netherlands.

Corresponding author:

M.W.J.M. Wouters

Department of Surgical Oncology

Plesmanlaan 121

1066 CX Amsterdam

The Netherlands.

Phone: +31-20-5129111

E-mail: M.Wouters@nki.nl

Keywords: quality of care, variation, hospital volume, hospital specialization, quality assurance, guideline adherence, medical audit, comprehensive cancer centre

Abstract

Background: In 2007 the Dutch Cancer Society formed a 'Quality of Cancer Care' taskforce comprising medical specialists, from all disciplines involved in the care for cancer patients. This taskforce was charged with the evaluation of quality of cancer care in the Netherlands and the development of strategies for improvement.

Objective: The experts first focused on the relation between procedural volume and patient outcome and later aimed to identify other factors associated with high and low quality of the care provided in different regions and (types of) hospitals in the Netherlands. The question if cancer care in the Netherlands could be organized differently to assure high quality of care for all patients, was the main subject of investigation.

Methods: An extensive review of the literature on infrastructure, volume and specialization on the one hand and outcome on the other was performed. In addition, a meta-analysis of the volume-outcome relationship for pancreatectomies, bladder, lung, colorectal and breast cancer resections was performed. Finally, variation in quality of cancer care between regions, groups of hospitals and individual hospitals in our country was investigated on data from the Netherlands Cancer Registry.

Results: In the Netherlands quality of care varies by hospital and region. These differences are not limited to surgical procedures and postoperative mortality, but are also demonstrated in other parts of the care process. Differences are only partly explained by differences in infrastructure, procedural volume and specialization between hospitals. Essential information on differences in case mix between these hospitals are lacking from the Netherlands Cancer Registry. More detailed clinical data are needed to reveal the mechanisms behind the differences in quality of care between Dutch hospitals.

Conclusion: On a population level, there is potential for improvement of outcome for cancer patients in the Netherlands by reducing variation in optimal treatment rates between hospitals. Not only treatment of tumours with a low incidence but also other complex or high risk cancer procedures should be provided in a specialized setting, with the right infrastructure, sufficient volume and adequate expertise. In addition, outcomes should be monitored continuously and fed back to individual caregivers.

Introduction

In most European countries quality of care is high on the political agenda. Especially in cancer care future developments force us to re-evaluate the way care is provided for our patients. First the number of cancer patients is rising and will continue to do so. Second, the relative part of elderly cancer patients, with an increased risk of treatment related morbidity and mortality will rise. Moreover, care processes, including diagnostic procedures, multidisciplinary decision making and combined modality treatments, are becoming more and more complex, demanding more specific knowledge, expertise and infrastructure in institutions providing cancer care.

Simultaneously, there is a growing concern about the quality and safety of health care: it harms too frequently and routinely fails to deliver the desired benefits(1). A plethora of articles on variation in quality of care delivered by different types of hospitals, has contributed to the concern that the care delivered is not always, the care that should be received (2-4).

Authorities as well as the public demand more accountability and transparency in the quality of the care provided. In many countries quality indicators are developed to gain insight in differences in quality of care between institutions. Unfortunately, few quality indicators are validated; have proven their capacity to discriminate between high and low quality of care.

In the Netherlands, under the supervision of the Signaling Committee of the Dutch Cancer Society a 'Quality of Cancer Care' taskforce was formed in 2007, comprising medical specialists, from all disciplines involved in the care for cancer patients, who had expertise in quality of care improvement projects. This taskforce was charged with the evaluation of quality of cancer care in the Netherlands and the development of strategies for improvement. The experts first focused on the relation between procedural volume and patient outcome and later aimed to identify other factors associated with high and low quality of the care provided in different regions and (types of) hospitals in the Netherlands. The question if cancer care in the Netherlands could be organized differently to assure high quality of care for all patients, was the main subject of investigation.

Survival of cancer patients in the Netherlands

In a European perspective the survival of cancer patients in the Netherlands is favourable for the majority of tumours (5;6). Especially, in head and neck tumors survival is highest in Europe, though in other cancer types, like esophageal, gastro-intestinal, liver, pancreatic and ovarian tumours, outcome is less favourable. In addition, recent Dutch studies show marked variation in outcome between different providers. Surgery for ovarian carcinoma by gynaecologists in the Netherlands proved to have better outcome than by general gynecologists (7). Morbidity and mortality after esophageal and pancreatic resections for cancer in high volume centers showed to be lower than in low volume center (8-10). These studies suggest that outcome of low volume cancer surgery could be improved by concentrating procedures at specialized high-volume providers(11). This is supported by the excellent results in the treatment of head and neck tumours in our country, for which surgery is concentrated in seven specialized centers.

Volume and outcome

Since, Birkmeyer et al published their article on the inverse relationship between hospital volume and mortality after high risk surgical procedures in the New England Journal of Medicine in 2002 (2), there has been a debate about volume and outcome of many cancer procedures in the Netherlands. Despite several publications on excess mortality of patients in who high risk cancer procedures, like esophagectomies and pancreatectomies, were performed in low volume hospitals (12;13), no change in referral patterns was seen during several years (14). Therefore, the Netherlands Health Care Inspectorate intervened and banned esophagectomies from hospitals with a mean annual volume less than 10. Nevertheless, doubts remained about actual improvement in outcome after concentrating these high risk cancer procedures. Selecting future referral centers exclusively on their procedural volume might not lead to actual improvements in outcome on a population level(15). Moreover, the relationship between volume and outcome could not only be limited to high-risk cancer surgery, but be present in several diagnostic and treatment procedures of different parts of the care process for cancer patients.

Therefore, the 'Quality of Cancer Care' taskforce performed an extensive review of the literature on infrastructure, volume and specialization on the one hand and outcome on the

other. Five hundred forty five publications were found and after exclusion of articles on non cancer related subjects and single institution studies 122 articles remained in the study. Most articles reported on surgical procedures, studies investigating other aspects of the care process for cancer patients where found sporadically. Besides, outcome was generally limited to postoperative morbidity and mortality, though some recent studies also report on use of breast conserving therapies, recurrence rates, survival, quality of life and patient satisfaction (16-18). Differences in quality of diagnostic procedures and pathology examinations between providers are certainly underexposed, in literature only a few articles addressing this subject were found (19-25).

For high risk cancer surgery, like esophagectomies, gastrectomies, pancreatectomies, liver resections, lung and bladder resections mortality proved to be significantly lower in high volume compared to low volume hospitals (Table1). In only a few studies survival was used as endpoint, but proved to be significantly related to hospital volume in most of them. Also the relation between surgeon volume and surgeon specialty on the one hand and mortality on the other was shown in several studies. Though, results of volume-outcome studies in colorectal surgery were less evident. Earlier studies have shown that morbidity in rectum resections is higher than in colon resections, though the risk of dying postoperatively is substantially higher in colon resections. Low hospital volume was found to be a predictive factor for mortality in colon (8 out of 9 studies) but not in rectum resections (1 out of 5). Though, in rectum resections 5 out of 5 studies investigating the relationship between hospital volume and morbidity, were positive. Moreover, several studies on surgeon volume and –specialty were positive for mortality, recurrence rates and survival. For ovarian and breast cancer resections more studies investigating survival with high- and low volume providers were found. Differences in outcome were more explicit for surgeon related factors, like surgeon volume and specialty, than for hospital characteristics.

Though literature on the volume - outcome relationship in cancer procedures proved to be extensive, the Dutch 'Quality of Cancer Care' taskforce found several impediments translating these results into policy. First, most studies are observational, using data collected for other purposes than the evaluation of quality of care and were performed in health care systems

essentially different from that in the Netherlands (for example studies on large insurance companies databases in the United States). Second, important case mix adjustments were frequently omitted. Moreover, cut offs between low- and high volume were very heterogeneous, high volume in one study could be low volume in the other. Therefore the risk of selection and publication bias in these studies is substantial. To anticipate on a number of these objections a meta-analysis was performed for a selection of tumour resections: pancreatic, bladder, colorectal, lung and breast cancer resections. Figures 1 and 2 show a summary of the results of the meta-analyses, of which several are published in this same issue of the European Journal of Surgical Oncology. Despite the results of these meta-analyses, the question remained if results from these studies could be extrapolated to the Dutch setting.

Variation in quality of care

To be able to answer the question to what extent variation in quality of cancer care exists between regions, groups of hospitals or individual hospitals in our country, data from the Netherlands Cancer Registry were investigated. In the Netherlands all newly diagnosed malignancies are registered in this nationwide population-based registry. Data are collected from the medical records by specially trained registrars and are coded according to a national manual. Information on patient characteristics, tumour characteristics, treatment, hospital of diagnosis, hospital of treatment and follow-up is recorded. For coding tumour site and morphology the International Classification of Diseases for Oncology (ICD-O) is used(26). Cancers are staged according the TNM classification(27). Quality of the data is high and completeness is estimated to be at least 95%(28;29).

For this study 4 tumour types were selected, based on their risk profile (Table 3). Invasive bladder cancer was selected as a low volume tumour type with a high risk on postoperative morbidity and mortality after bladder resection. Non-small cell lung cancer (NSCLC) as an intermediate volume tumour with a high risk on treatment morbidity and an unfavourable survival. Colorectal cancer is a high volume tumour with a high risk on postoperative morbidity, but a fair survival rate at 5 years. Finally, breast cancer was selected as a high volume tumour, with lower treatment related morbidity and a favourable survival. All patients diagnosed with these tumour types in the years 2001 until 2006 were included in the study. For all tumours

hospitals were grouped according to structural characteristics like diagnostic and procedural volume, academic and / or teaching status, radiotherapy facilities and their region (affiliation with one of the eight Comprehensive Cancer Centres). Aspects of quality of care to be evaluated in the studies were selected from the evidence-based guidelines valid in the study period.

For bladder cancer important differences in outcome between high and low volume hospitals were revealed. The risk of dying after cystectomy in the 44 low volume hospitals (≤ 5 / year) proved more than five times as high as in the 13 high volume hospitals (> 10 /year), respectively 6.4 and 1.2%. In addition, lymph node resections were performed more frequently in academic hospitals compared to hospitals without a teaching status for urologists (OR 2.7, $p<0.001$) and in high volume compared to low volume hospitals (OR 1.52, $p=0.04$). During the period under investigation there was only a small trend in centralization of cystectomies.

Patients with stage I and II NSCLC diagnosed in teaching hospitals for thoracic surgeons (OR 1.49, $p=0.001$) and in hospitals with a diagnostic volume of more than 50/year (OR 1.29, $p=0.001$) had a higher chance of resection of their tumour. Nevertheless, differences in resection rates between individual hospitals were much more distinct, ranging from less than 50 to more than 90%. Similar differences in the use of chemoradiation (radiotherapy combined with chemotherapy) between individual hospitals were seen, without a significant relation with a hospitals radiotherapy facilities.

In colon carcinoma, patients diagnosed in an academic hospital were more likely to have 10 or more lymph nodes evaluated after resection (OR 2.31, $p<0.001$). For patients in hospitals with a volume of more than 100 diagnoses a year the contrary was true (OR 0.69, $p<0.001$). Again, variation on the level of individual hospitals was much more distinct, varying from less than 20% to more than 70% of patients with 10 or more lymph nodes evaluated. Also the proportion of patients younger than 75 years receiving adjuvant chemotherapy for their stage III colon carcinoma varied by hospital, ranging from less than 60 to more than 90%. For rectal carcinoma the proportion of patients younger than 75 years with clinical stage T2/T3-N0/N1-M0 receiving preoperative radiotherapy varied widely on the individual hospital level, from less than 60 to more than 90%.

Despite the sentinel node procedure (SNP) was introduced in the Netherlands in 1996, the percentage of patients with pT1T2 N0 breast cancer receiving primary axillary lymph node dissection (ALND) varied widely on the individual hospital level during the studied period: 2003-2006. In 10 out of 97 Dutch hospitals 10% or less of the patients received an ALND, while in the same period 9 hospitals had a percentage of more than 40. Especially in non-teaching hospitals a large proportion of node-negative breast cancer patients received ALND. The differences between hospitals decreased over time, indicating that more and more surgeons use the SNP method instead of ALND. Nevertheless, investigators were surprised with the differences shown between fast and slow adapting hospitals, in the introduction of an operative technique that decreases morbidity substantially for a large number of breast cancer patients.

Based on the results of these studies in bladder-, lung-, colorectal- and breast cancer, the taskforce concluded that variation in quality of care for cancer patients in the Netherlands varies by hospital and / or region. These differences are not limited to surgical procedures and postoperative mortality, but are also demonstrated in other parts of the care process. Sometimes, the range of variation is disturbingly high. Unfortunately, essential information on differences in case mix between these hospitals are lacking from the Netherlands Cancer Registry. More detailed clinical data are needed to reveal the mechanisms behind the differences in quality of care between Dutch hospitals.

Current strategies for quality improvement

In the Dutch health care system, the choice (and responsibility) to refer a patient needing specialized care to a colleague or hospital with adequate expertise is entirely in the hands of individual medical professionals. During the past 30 years the comprehensive cancer centres (CCCs), non-hospital organizations that serve as platforms for regional and national consultation between professionals, have played an important role in the coherence of cancer care in the Netherlands. Aim of the comprehensive cancer centres is that optimal cancer care is provided to each patient. Main focus groups are caregivers, such as medical specialists and organizations, such as hospitals. In the eighties cancer patients were treated in more than 170 hospitals all over the Netherlands with a wide varying quality. Main emphasis during that period

was the sharing of knowledge and multidisciplinary collaboration within hospitals and within regions. For example, weekly multidisciplinary oncology meetings, in which patient-specific issues regarding diagnosis and treatment can be discussed with regional experts, were organized in every hospital in the Netherlands. In addition, the Netherlands cancer registry was founded to get a better view on the incidence of different types of cancer as well as gaining insight in the quality of care provided. In the nineties several regional instruments were developed to encourage further improvements and diminish differences in provided care, such as regional guidelines and methods of self evaluation. The first decade of the millennium was characterized by increasing national collaboration. For example, regional consensus-based guidelines were replaced by national evidence-based. Besides many regional quality improving initiatives were successfully implemented often with the support of data collected by the cancer registry (www.ikcnet.nl).

Only recently, professional organizations like the Association of Surgical Oncologists of the Netherlands have started to formulate the terms for surgeons to perform specific cancer procedures. Until now, instruments used by professional organizations to improve quality of care were limited to guideline development, educational programs and site-visits. In only 19 of 50 professional guidelines on cancer treatment specific demands regarding infrastructure, procedural volume or referral of patients are mentioned (Table 4). A nationwide outcome registry (medical audit) to reveal differences in treatment patterns and quality of care in individual hospitals has started recently for colorectal cancer in the Dutch Surgical Colorectal Audit. In the first report on data collected on colorectal resections performed in 2009 important information on casemix differences between hospitals in the Netherlands are revealed and several quality issues appealing for improvement, were identified (www.dsca.nl).

Quality assurance, indicators and audits

Knowledge, experience and skills of individual medical specialists (or their teams) providing care for cancer patients might vary in such a way that it leads to variation in outcome. An overwhelming number of evidence-based guidelines were developed in our country to transfer the best available knowledge on cancer care to all physicians treating these patients.

Unfortunately, little is known about the adherence to these guidelines in daily practice and more interestingly: the reasons for non-compliance.

In randomized clinical trials it is recognized that treatment variation could influence the outcome of these trials and therefore should be minimized. Especially when surgery is part of a trial, variability in the skills of participating surgeons leads to irreproducible results. To reduce this variation, surgical quality assurance programs have been added to a number of trials, in which participating surgeons were trained to perform the procedure in an identical way.

However, quality assurance is not necessarily limited to the surgical aspects of treatment, but is a complete set of measures required to achieve a treatment result that meets a certain standard (30). For example, quality assurance was integrated in the Dutch TME trial, in which a new surgical technique was used in rectal cancer resections by all participating surgeons. To train these surgeons workshops, videotapes and instructors supervising the first 5 operations were used. Though, also for radiotherapy exact descriptions of dose, volume, fields and simulation techniques were used and for pathology a strict protocol was dictated, which gave the surgeons immediate feedback on their performance. The surgical quality assurance in this trial proved to be very successful: local recurrence rates were reduced by 50% compared to historical data(31). The association between circumferential resection margin (CRM) involvement and outcome (local recurrence, survival) demonstrated the importance of this parameter in evaluating surgical performance, not only in trials, but also in daily practice(32).

The question is: should adequate quality control on how diagnostic procedures and treatments are performed be an integrated part of daily medical practice? The positive answer to this question is confirmed by national audit programs performed in several Scandinavian countries and the UK. For example, in Norway in the early 1990s, results for rectal cancer surgery were poor, with a 5-year survival of 55% and local recurrence rates of 28%. In addition, there was wide variation between individual hospitals (33). Therefore, the surgical community started training gastrointestinal surgeons and started monitoring the outcome of rectal cancer resections, in which individual results were fed back to the surgeons, case mix adjusted and in comparison to the national average (benchmarking). The results of this Norwegian Rectal

Cancer Registry were remarkable; after 4 years the proportion of TME surgery rose from 78 to 92% and the local recurrence rate dropped from 28 to 7% (34).

These results of outcome registration and casemix adjusted feedback to individual hospitals are not limited to rectal cancer surgery in which a new technique was introduced. A Dutch regional intervention study on oesophageal cancer surgery showed that timely feedback of results to individual hospitals and surgeons led to voluntarily changes in referral patterns in 2 to 3 years time. Marked improvements in mortality and survival were seen(11). Also, the National Surgical Quality Improvement Program (NSQIP) that began more than 20 years ago in the Veterans Affairs hospitals in the United States keeps reporting marked reductions in morbidity and mortality in the hospitals participating (35-37). This is accomplished by a peer-controlled program of continuous and timely feedback of case mix adjusted outcomes of surgical care (38). From these projects, and there are more to mention, we learn that 'mirror-information' works as a catalyst for quality improvement in surgical care.

As mentioned above, in the Netherlands surgical audit programs, like those in the UK, Scandinavian countries and United States have only recently been started by the Association of Surgeons of the Netherlands and only for the surgical treatment of colorectal cancer. These audits are essentially different from the quality indicators that are developed by the Netherlands Health Care Inspectorate and the Ministry of Health. While audits are primarily an instrument for caregivers to improve the care they provide, the primary purpose of quality indicators is the public disclosure of the quality of health care. Unfortunately, quality indicators lack important case mix adjustments and their capacity to discriminate high from low quality of care is seldom proven. Audit programs have the potential to provide patients and payers with valid case mix adjusted quality information, protecting physicians and hospitals from an unjust appraisal of their performance.

International perspective

The first population based colorectal audits were set up in the mid nineties in the Scandinavian countries. More recently, similar colorectal audit initiatives were introduced in the UK, Belgium, the Netherlands, Spain, Germany and Poland. Other European countries started regional initiatives.

Despite all these quality efforts, still considerable differences in survival rates between European countries exist. For instance, 5 year relative survival after colorectal cancer varies between 32% and 64% [eurocare-4]. To reduce those differences and generate the best care for colorectal cancer in the whole of Europe, a deep and broad insight in the results of colorectal cancer treatment is needed in all its nations. The inevitable conclusion is that a European audit registration is needed to ameliorate the treatment of rectal cancer even further and decrease variation in the quality of care.

Urged by these arguments, the European Society of Surgical Oncology (ESSO) initiated an international multidisciplinary outcome-based quality Improvement project: 'European Registration of Cancer Care' (EURECCA). This initiative has been fully embraced by the European Cancer Organization (ECCO). EURECCA's goal is to create a multidisciplinary European registration structure of patient, tumour and treatment characteristics linked to outcome registration (morbidity, mortality, loco-regional control, and survival). The registration will be used for benchmarking and internal feedback among participants and hereby further improvements in quality and efficiency of cancer care. Nine European audits from 11 European countries decided to collaborate closely within the EURECCA project. Together with the European Society for Therapeutic Radiology and Oncologists (ESTRO) and the European Organisation of Research and Treatment of Cancer (EORTC), the project will speed up identification and dissemination of best practice around the continent. Furthermore, countries that don't have surgical audits can be helped in setting up one, making use of the available knowledge and experience. Finally, the size of the pooled project will generate enough statistical power to allow research on patient groups that are usually excluded from clinical trials, such as elderly or patients with much comorbidity. More information about this project can be found on the webpage (www.canceraudit.eu).

Conclusions

In the opinion of the medical professionals participating in the quality of cancer care taskforce of the Dutch Cancer Society, overall quality of care for cancer patients treated in the

Netherlands is high. Nevertheless, there is potential for further improvement of outcome on a population level by reducing variation in optimal treatment rates between hospitals. This opinion is based on an extensive review of the literature and evaluation of the best available data on the performance of individual hospitals in our country. Care processes for the diagnosis and treatment of cancer patients are getting more and more complex, demanding more and more experience, expertise and skills of individual medical specialists and their teams. This should have consequences for the way cancer care is provided in the near future. Not only treatment of tumours with a low incidence but also other complex or high risk cancer procedures should be provided in a specialized setting, with the right infrastructure, sufficient volume and adequate expertise. In addition, outcomes should be monitored continuously and fed back to individual caregivers (and their hospitals) accompanied with actable information to improve quality of care.

The taskforce has the following recommendations to improve quality of cancer care in the Netherlands:

- Essential information on variation in patterns and outcome of cancer care between providers should come available to reduce variation and improve outcome on a population level.
- Research projects aiming to reveal the mechanisms behind variation in quality of care and to identify best practices should be facilitated financially.
- Concentration of complex cancer care is necessary and should be based on criteria concerning infrastructure, procedural volume, specific expertise and the outcomes of the care provided.
- Professional organisations should take their responsibility to make adequate evaluation of the care provided by their members possible.
- Valid information on (differences in) quality of care should be made available for the public, payers and individual patients,

- Regional and multidisciplinary cooperation and referral of patients for specific cancer treatments between hospitals and physicians should be stimulated.
- Next to monodisciplinary quality initiatives more multidisciplinary collaboration in improving quality of care should be initiated,
- Coordination of multidisciplinary quality initiatives could be provided by the Comprehensive Cancer Centres collaborating in a national organisation.
- Valid case mix adjusted outcome information should be collected in national audit programs and fed back to individual hospitals and physicians continuously.
- Professionals should determine which information is essential to assess the quality of care provided to each patient.
- These 'minimal datasets' should be integrated unambiguously in the Electronic Health Records of each hospital in the Netherlands.
- Long term outcome information (recurrences, survival) can be added to the in-hospital information collected by medical audits by the Netherlands Cancer Registry.
- Next to information on the outcome of the care process in individual hospitals, the evaluation of patient satisfaction is equally important.

WORD COUNT: 4086

Table 1 Studies on hospital or surgeon volume (HV or SV) and hospital or surgeon specialization (HS or SS).

Tumour procedure	Subject*	Outcome	Result# (significant)	References
Esophageal resections	HV	mortality	15 / 16	(2;10;13;39-51)
	HS	mortality	1 / 1	(52)
		survival	1 / 1	(18)
	SV	mortality	3 / 4	(48;53-55)
	SS	mortality	1 / 1	(56)
Stomach resections	HV	mortality	8 / 9	(2;40;44;46;53;57-60)
		survival	1 / 1	(61)
	SV	mortality	3 / 3	(53;57;59)
	SS	mortality	1 / 1	(57)
Pancreatic resections	HV	mortality	17 / 18	(2;8;14;39;40;44;46;50;62-71)
		survival	2 / 2	(62;63)
	SV	mortality	4 / 4	(54;67;69;71)
Liver resections	HV	mortality	12 / 12	(39;42;46;52;63;64;70;72-76)
		survival	0 / 1	(63)
	HS	mortality	1 / 1	(56)
	SS	mortality	1 / 1	(56)
Colonresections	HV	mortality	8 / 9	(2;44;46;57;59;70;77-79)
		morbidity	1 / 2	(78;79)
		survival	2 / 2	(80;81)
	SV	mortality	4 / 4	(57;59;77;82)
		morbidity	1 / 1	(79)
		survival	0 / 1	(83)
	SS	mortality	2 / 2	(57;83)
		morbidity	1 / 1	(82)
		survival	1 / 1	(83)
Rectumresections	HV	mortality	1 / 4	(78;84-86)
		morbidity	4 / 4	(84;86-88)
		recurrence	1 / 2	(89;90)
		survival	2 / 7	(81;84-86;88-90)
	SV	mortality	0 / 1	(86)
		recurrence	1 / 1	(91)
		survival	2 / 3	(83;86;91)
	SS	survival	1 / 1	(83)
Colorectal resections	HV	mortality	2 / 4	(50;92-94)
		recurrence	1 / 1	(95)
		survival	1 / 2	(95;96)

	SV	mortality	2 / 2	(93;94)
		recurrence	1 / 1	(95)
	SS	survival	1 / 1	(83)
Lung resections	HV	mortality	7 / 8	(2;40;44;50;59;70;97;98)
	HS	survival	1 / 1	(97)
	SV	mortality	2 / 2	(54;59)
	SS	mortality	1 / 1	(99)
Bladder resections	HV	mortality	6 / 6	(2;44;100-103)
	SV	mortality	1 / 2	(54;101)
Kidney resections	HV	mortality	2 / 4	(2;44;102;104)
Prostate resections	HV	mortality	3 / 4	(102;105-107)
		morbidity	3 / 3	(105;107;108)
		adjuvant therapy	1 / 1	(106)
	SV	mortality	0 / 1	(105)
		morbidity	2 / 2	(105;108)
Ovarium resections	HV	mortality	0 / 2	(109;110)
		morbidity	1 / 2	(109;111)
		survival	2 / 3	(110;112;113)
	HS	survival	1 / 2	(7;113)
	SV	mortality	0 / 2	(109;110)
		morbidity	0 / 1	(111)
	SS	survival	2 / 2	(7;114)
Breast resections	HV	survival	4 / 6	(115-120)
		% breast cons.	2 / 2	(16;121)
		mortality	1 / 1	(70)
	SV	survival	5 / 5	(120;122-125)
		% breast cons.	1 / 1	(16)
		recurrence	1 / 1	(122)
	SS	survival	1 / 1	(120)

*HV hospital volume; HS hospital specialization; SV surgeon volume; SS surgeon specialization

Number of studies with significant results versus total number of studies

Table 2 Profile of tumours investigated by the 'Quality of Cancer Care' working party.

Tumour	Number / year	Morbidity	5- year survival
Invasive bladder cancer	1 300 / year	High	33%
Non-small cell lung cancer	6 400 / year	High	15%
Colorectal cancer	10 000 / year	High	59%
Breast cancer	13 000 / year	Low	86%

Data-source: Netherlands Cancer Registry www.kankerregistratie.nl

Table 3 Professional guidelines with specific standards on infrastructure, procedural volume, referral of patients or outcome registration.

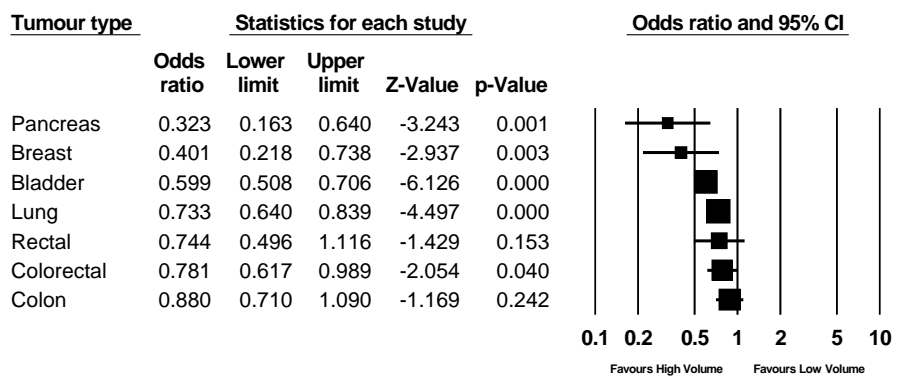
Guideline	Infrastructure	Volume / referral	Outcome registration
Breast cancer	+	-	-
Colon cancer	-	+	+
Rectal cancer	+	+	+
Bladder cancer	+	-	-
Prostate cancer	+	-	-
Testis cancer	+	+	-
Esophageal cancer	+	+	-
Livermetastases	+	-	-
NSCLC	+	-	-
Pharyngeal cancer	+	-	-
Stomach cancer	+	-	-
Pancreatic cancer	-	+	-
Cervical cancer	+	-	-
Ovarian cancer	+	-	-
Endometrium cancer	+	+	-
Vulva cancer	+	-	-
Vagina cancer	+	+	-
Carcinoid	+	-	-
Leptomeningeal metastases	+	-	-

+ mentioned in guideline

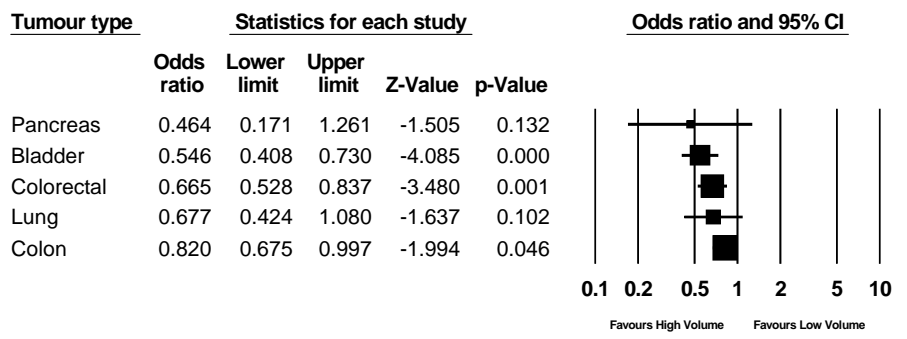
- not mentioned in guideline

Fig 1 Meta-analyses: odds ratio (OR) plots for postoperative mortality after pancreatic, breast, bladder, lung, and colorectal resections for cancer, in high volume versus low volume hospitals (figure a) and by high versus low volume surgeons (figure b). The center of the square represents the pooled OR and its extremities represent its 95% confidence interval

Random Effects Hospital Mortality

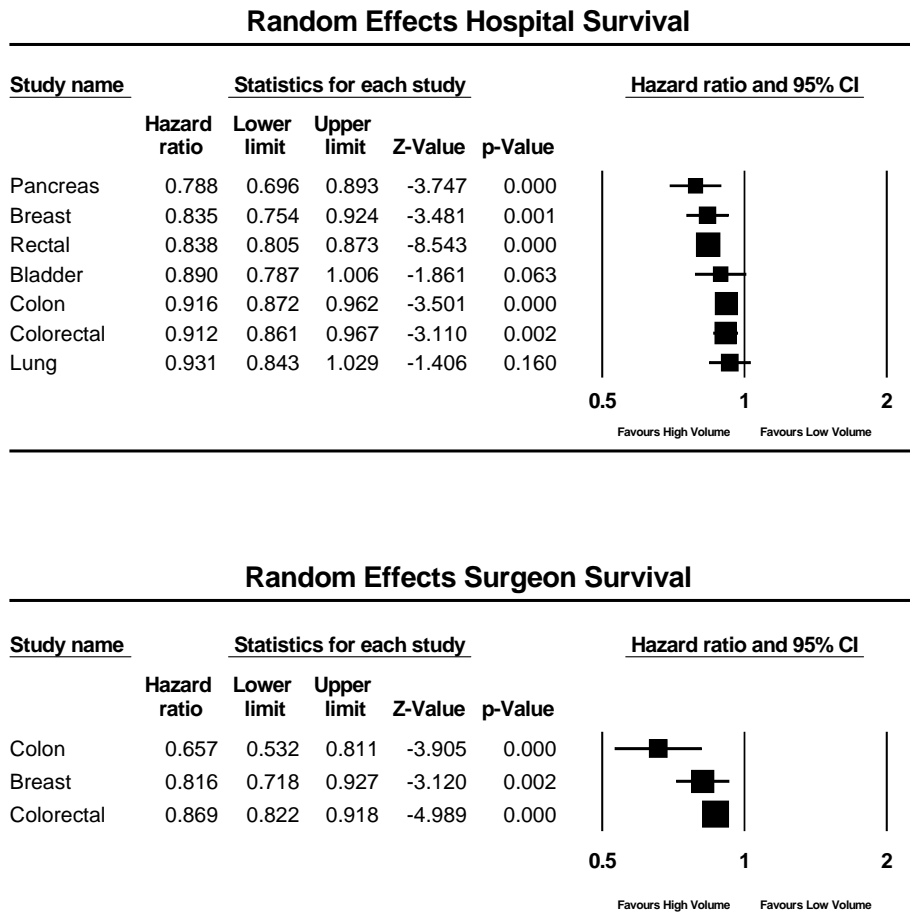


Random Effects Surgeon Mortality



ACC

Fig 2 Meta-analyses: hazard ratio (HR) plots for survival after pancreatic, breast, rectal, bladder, colon and lung resections for cancer, in high volume versus low volume hospitals (figure a) and by high versus low volume surgeons (figure b). The center of the square represents the pooled HR and its extremities represent its 95% confidence interval



Reference List

1. Institute of Medicine committee on Quality of Health Care in America. **Crossing the Quality Chasm: A New Health System for the 21st Century.** 2001. National Academy Press, Washington, D.C.

Ref Type: Report

2. Birkmeyer JD, Siewers AE, Finlayson EV, Stukel TA, Lucas FL, Batista I, Welch HG, Wennberg DE. Hospital Volume and Surgical Mortality in the United States. *N Engl J Med* 2002; 346(15): 1128-37.
3. Lemmens VE, Verheij CD, Janssen-Heijnen ML, Rutten HJ, Coebergh JW. Mixed Adherence to Clinical Practice Guidelines for Colorectal Cancer in the Southern Netherlands in 2002. *Eur J Surg Oncol* 2006; 32(2): 168-73.
4. Li WW, Visser O, Ubbink DT, Klomp HM, Kloek JJ, de Mol BA. The Influence of Provider Characteristics on Resection Rates and Survival in Patients With Localized Non-Small Cell Lung Cancer. *Lung Cancer* 2008; 60(3): 441-51.
5. Coleman MP, Gatta G, Verdecchia A, Esteve J, Sant M, Storm H, Allemani C, Ciccolallo L, Santaquilani M, Berrino F. EURO CARE-3 Summary: Cancer Survival in Europe at the End of the 20th Century. *Ann Oncol* 2003; 14 Suppl 5: v128-v149.
6. Moller H, Linklater KM, Robinson D. A Visual Summary of the EURO CARE-4 Results: a UK Perspective. *Br J Cancer* 2009; 101 Suppl 2: S110-S114.
7. Engelen MJ, Kos HE, Willemse PH, Aalders JG, de Vries EG, Schaapveld M, Otter R, van der Zee AG. Surgery by Consultant Gynecologic Oncologists Improves Survival in Patients With Ovarian Carcinoma. *Cancer* 2006; 106(3): 589-98.
8. Gouma DJ, van Geenen RC, van Gulik TM, de Haan RJ, de Wit LT, Busch OR, Obertop H. Rates of Complications and Death After Pancreaticoduodenectomy: Risk Factors and the Impact of Hospital Volume. *Ann Surg* 2000; 232(6): 786-95.
9. van Lanschot JJ, Hulscher JB, Buskens CJ, Tilanus HW, ten Kate FJ, Obertop H. Hospital Volume and Hospital Mortality for Esophagectomy. *Cancer* 2001; 91(8): 1574-8.
10. Wouters MW, Wijnhoven BP, Karim-Kos HE, Blaauwgeers HG, Stassen LP, Steup WH, Tilanus HW, Tollenaar RA. High-Volume Versus Low-Volume for Esophageal Resections for Cancer: The Essential Role of Case-Mix Adjustments Based on Clinical Data. *Ann Surg Oncol* 2007.

11. Wouters MW, Karim-Kos HE, Le Cessie S, Wijnhoven BP, Stassen LP, Steup WH, Tilanus HW, Tollenaar RA. Centralization of Esophageal Cancer Surgery: Does It Improve Clinical Outcome? *Ann Surg Oncol* 2009.
12. Gouma DJ, de Wit LT, Berge Henegouwen MI, Van Gulik TH, Obertop H. [Hospital Experience and Hospital Mortality Following Partial Pancreaticoduodenectomy in The Netherlands]. *Ned Tijdschr Geneeskd* 1997; 141(36): 1738-41.
13. van Lanschot JJ, Hulscher JB, Buskens CJ, Tilanus HW, ten Kate FJ, Obertop H. Hospital Volume and Hospital Mortality for Esophagectomy. *Cancer* 2001; 91(8): 1574-8.
14. van Heek NT, Kuhlmann KF, Scholten RJ, de Castro SM, Busch OR, van Gulik TM, Obertop H, Gouma DJ. Hospital Volume and Mortality After Pancreatic Resection: a Systematic Review and an Evaluation of Intervention in the Netherlands. *Ann Surg* 2005; 242(6): 781-8, discussion.
15. Wouters MW, Krijnen P, Le Cessie S, Gooiker GA, Guicherit OR, Marinelli AW, Kievit J, Tollenaar RA. Volume- or Outcome-Based Referral to Improve Quality of Care for Esophageal Cancer Surgery in The Netherlands. *J Surg Oncol* 2009; 99(8): 481-7.
16. Hiotis K, Ye W, Sposto R, Skinner KA. Predictors of Breast Conservation Therapy: Size Is Not All That Matters. *Cancer* 2005; 103(5): 892-9.
17. Rutegard M, Lagergren P. No Influence of Surgical Volume on Patients' Health-Related Quality of Life After Esophageal Cancer Resection. *Ann Surg Oncol* 2008; 15(9): 2380-7.
18. Verhoef C, van de Weyer R, Schaapveld M, Bastiaannet E, Plukker JT. Better Survival in Patients With Esophageal Cancer After Surgical Treatment in University Hospitals: a Plea for Performance by Surgical Oncologists. *Ann Surg Oncol* 2007; 14(5): 1678-87.
19. Chen SC, Bravata DM, Weil E, Olkin I. A Comparison of Dermatologists' and Primary Care Physicians' Accuracy in Diagnosing Melanoma: a Systematic Review. *Arch Dermatol* 2001; 137(12): 1627-34.
20. Khan J, Damato BE. Accuracy of Choroidal Melanoma Diagnosis by General Ophthalmologists: a Prospective Study. *Eye (Lond)* 2007; 21(5): 595-7.
21. Lee SH, Chung IK, Kim SJ, Kim JO, Ko BM, Hwangbo Y, Kim WH, Park DH, Lee SK, Park CH, Baek IH, Park DI, Park SJ, Ji JS, Jang BI, Jeon YT, Shin JE, Byeon JS, Eun CS, Han DS. An Adequate Level of Training for Technical Competence in Screening and Diagnostic Colonoscopy: a Prospective Multicenter Evaluation of the Learning Curve. *Gastrointest Endosc* 2008; 67(4): 683-9.
22. Lemmens VE, van Lijnschoten I, Janssen-Heijnen ML, Rutten HJ, Verheij CD, Coebergh JW. Pathology Practice Patterns Affect Lymph Node Evaluation and Outcome of Colon Cancer: a Population-Based Study. *Ann Oncol* 2006; 17(12): 1803-9.

23. van Vliet EP, Eijkemans MJ, Poley JW, Steyerberg EW, Kuipers EJ, Siersema PD. Staging of Esophageal Carcinoma in a Low-Volume EUS Center Compared With Reported Results From High-Volume Centers. *Gastrointest Endosc* 2006; 63(7): 938-47.
 24. van Vliet EP, Hermans JJ, De Wever W, Eijkemans MJ, Steyerberg EW, Faasse C, van Helmond EP, de Leeuw AM, Sikkenk AC, de Vries AR, de Vries EH, Kuipers EJ, Siersema PD. Radiologist Experience and CT Examination Quality Determine Metastasis Detection in Patients With Esophageal or Gastric Cardia Cancer. *Eur Radiol* 2008; 18(11): 2475-84.
 25. Wong SL, Ji H, Hollenbeck BK, Morris AM, Baser O, Birkmeyer JD. Hospital Lymph Node Examination Rates and Survival After Resection for Colon Cancer. *JAMA* 2007; 298(18): 2149-54.
 26. Fritz A, Percy C, Jack A, Shanmugaratnam K, Sobin L, Parkin DM, Whelan S, (eds). *International Classification of Diseases for Oncology. Third edition.* Geneva: WHO, 2000.
 27. Wittekind C, Greene FL, Hutter RVP, Klimpfinger M, Sobin LH, (eds). *TNM Atlas.* Berlin: Springer-Verlag, 2004.
 28. Schouten LJ, Jager JJ, van den Brandt PA. Quality of Cancer Registry Data: a Comparison of Data Provided by Clinicians With Those of Registration Personnel. *Br J Cancer* 1993; 68(5): 974-7.
 29. Schouten LJ, Hoppener P, van den Brandt PA, Knottnerus JA, Jager JJ. Completeness of Cancer Registration in Limburg, The Netherlands. *Int J Epidemiol* 1993; 22(3): 369-76.
 30. den DM, van de Velde CJ. Quality Assurance in Surgical Oncology: the Tale of the Dutch Rectal Cancer TME Trial. *J Surg Oncol* 2008; 97(1): 5-7.
 31. Peeters KC, Marijnen CA, Nagtegaal ID, Kranenbarg EK, Putter H, Wiggers T, Rutten H, Pahlman L, Glimelius B, Leer JW, van de Velde CJ. The TME Trial After a Median Follow-Up of 6 Years: Increased Local Control but No Survival Benefit in Irradiated Patients With Resectable Rectal Carcinoma. *Ann Surg* 2007; 246(5): 693-701.
 32. Peeters KC, van de Velde CJ. Surgical Quality Assurance in Rectal Cancer Treatment: the Key to Improved Outcome. *Eur J Surg Oncol* 2005; 31(6): 630-5.
 33. van Gijn W, Wouters MW, Peeters KC, van de Velde CJ. Nationwide Outcome Registrations to Improve Quality of Care in Rectal Surgery. An Initiative of the European Society of Surgical Oncology. *J Surg Oncol* 2009; 99(8): 491-6.
 34. Norstein J, Langmark F. Results of rectal cancer treatment: a national experience. Soreide O; Norstein J. 17-28. 1997. Oslo, Norway, Springer. Rectal cancer surgery: optimisation-standardisation-documentation.
- Ref Type: Report
35. Berenguer CM, Ochsner MG, Jr., Lord SA, Senkowski CK. Improving Surgical Site Infections: Using National Surgical Quality Improvement Program Data

- to Institute Surgical Care Improvement Project Protocols in Improving Surgical Outcomes. *J Am Coll Surg* 2010; 210(5): 737-3.
36. Khuri SF, Henderson WG, Daley J, Jonasson O, Jones RS, Campbell DA, Jr., Fink AS, Mentzer RM, Jr., Neumayer L, Hammermeister K, Mosca C, Healey N. Successful Implementation of the Department of Veterans Affairs' National Surgical Quality Improvement Program in the Private Sector: the Patient Safety in Surgery Study. *Ann Surg* 2008; 248(2): 329-36.
 37. Rowell KS. Use of National Surgical Quality Improvement Program Data As a Catalyst for Quality Improvement. 2007.
 38. Khuri SF, Daley J, Henderson W, Hur K, Demakis J, Aust JB, Chong V, Fabri PJ, Gibbs JO, Grover F, Hammermeister K, Irvin G, III, McDonald G, Passaro E Jr, Phillips L, Scamman F, Spencer J, Stremple JF. The Department of Veterans Affairs' NSQIP: the First National, Validated, Outcome-Based, Risk-Adjusted, and Peer-Controlled Program for the Measurement and Enhancement of the Quality of Surgical Care. National VA Surgical Quality Improvement Program. *Ann Surg* 1998; 228(4): 491-507.
 39. Begg CB, Cramer LD, Hoskins WJ, Brennan MF. Impact of Hospital Volume on Operative Mortality for Major Cancer Surgery. *JAMA* 1998; 280(20): 1747-51.
 40. Birkmeyer JD, Sun YT, Goldfaden A, Birkmeyer NJO, Stukel TA. Volume and Process of Care in High-Risk Cancer Surgery. *Cancer* 2006; 106(11): 2476-81.
 41. Dimick JB, Cattaneo SM, Lipsett PA, Pronovost PJ, Heitmiller RF. Hospital Volume Is Related to Clinical and Economic Outcomes of Esophageal Resection in Maryland. *Ann Thorac Surg* 2001; 72(2): 334-9.
 42. Dimick JB, Pronovost PJ, Cowan JA, Jr., Lipsett PA, Stanley JC, Upchurch GR, Jr. Variation in Postoperative Complication Rates After High-Risk Surgery in the United States. *Surgery* 2003; 134(4): 534-40.
 43. Dimick JB, Wainess RM, Upchurch GR, Jr., Iannettoni MD, Orringer MB. National Trends in Outcomes for Esophageal Resection. *Ann Thorac Surg* 2005; 79(1): 212-6.
 44. Finlayson EV, Goodney PP, Birkmeyer JD. Hospital Volume and Operative Mortality in Cancer Surgery: a National Study. *Arch Surg* 2003; 138(7): 721-5.
 45. Kuo EY, Chang Y, Wright CD. Impact of Hospital Volume on Clinical and Economic Outcomes for Esophagectomy. *Ann Thorac Surg* 2001; 72(4): 1118-24.
 46. Lin HC, Xirasagar S, Lee HC, Chai CY. Hospital Volume and Inpatient Mortality After Cancer-Related Gastrointestinal Resections: the Experience of an Asian Country. *Ann Surg Oncol* 2006; 13(9): 1182-8.

47. Patti MG, Corvera CU, Glasgow RE, Way LW. A Hospital's Annual Rate of Esophagectomy Influences the Operative Mortality Rate. *J Gastrointest Surg* 1998; 2(2): 186-92.
48. Rouvelas I, Lindblad M, Zeng W, Viklund P, Ye W, Lagergren J. Impact of Hospital Volume on Long-Term Survival After Esophageal Cancer Surgery. *Arch Surg* 2007; 142(2): 113-7.
49. Swisher SG, Deford L, Merriman KW, Walsh GL, Smythe R, Vaporicyan A, Ajani JA, Brown T, Komaki R, Roth JA, Putnam JB. Effect of Operative Volume on Morbidity, Mortality, and Hospital Use After Esophagectomy for Cancer. *J Thorac Cardiovasc Surg* 2000; 119(6): 1126-32.
50. Urbach DR, Bell CM, Austin PC. Differences in Operative Mortality Between High- and Low-Volume Hospitals in Ontario for 5 Major Surgical Procedures: Estimating the Number of Lives Potentially Saved Through Regionalization. *CMAJ* 2003; 168(11): 1409-14.
51. Wenner J, Zilling T, Bladstrom A, Alvegard TA. The Influence of Surgical Volume on Hospital Mortality and 5-Year Survival for Carcinoma of the Oesophagus and Gastric Cardia. *Anticancer Research* 2005; 25(1B): 419-24.
52. Dimick JB, Cowan JA, Jr., Colletti LM, Upchurch GR, Jr. Hospital Teaching Status and Outcomes of Complex Surgical Procedures in the United States. *Arch Surg* 2004; 139(2): 137-41.
53. Bachmann MO, Alderson D, Edwards D, Wotton S, Bedford C, Peters TJ, Harvey IM. Cohort Study in South and West England of the Influence of Specialization on the Management and Outcome of Patients With Oesophageal and Gastric Cancers. *Br J Surg* 2002; 89(7): 914-22.
54. Birkmeyer JD, Stukel TA, Siewers AE, Goodney PP, Wennberg DE, Lucas FL. Surgeon Volume and Operative Mortality in the United States. *N Engl J Med* 2003; 349(22): 2117-27.
55. Gillison EW, Powell J, McConkey CC, Spychal RT. Surgical Workload and Outcome After Resection for Carcinoma of the Oesophagus and Cardia. *Br J Surg* 2002; 89(3): 344-8.
56. Dimick JB, Goodney PP, Orringer MB, Birkmeyer JD. Specialty Training and Mortality After Esophageal Cancer Resection. *Ann Thorac Surg* 2005; 80(1): 282-6.
57. Callahan MA, Christos PJ, Gold HT, Mushlin AI, Daly JM. Influence of Surgical Subspecialty Training on in-Hospital Mortality for Gastrectomy and Colectomy Patients. *Ann Surg* 2003; 238(4): 629-36.
58. Damhuis RA, Meurs CJ, Dijkhuis CM, Stassen LP, Wiggers T. Hospital Volume and Post-Operative Mortality After Resection for Gastric Cancer. *Eur J Surg Oncol* 2002; 28(4): 401-5.
59. Hannan EL, Radzyner M, Rubin D, Dougherty J, Brennan MF. The Influence of Hospital and Surgeon Volume on in-Hospital Mortality for Colectomy,

- Gastrectomy, and Lung Lobectomy in Patients With Cancer. *Surgery* 2002; 131(1): 6-15.
60. Wainess RM, Dimick JB, Upchurch GR, Jr., Cowan JA, Mulholland MW. Epidemiology of Surgically Treated Gastric Cancer in the United States, 1988-2000. *J Gastrointest Surg* 2003; 7(7): 879-83.
 61. Nomura E, Tsukuma H, Ajiki W, Oshima A. Population-Based Study of Relationship Between Hospital Surgical Volume and 5-Year Survival of Stomach Cancer Patients in Osaka, Japan. *Cancer Sci* 2003; 94(11): 998-1002.
 62. Birkmeyer JD, Warshaw AL, Finlayson SR, Grove MR, Tosteson AN. Relationship Between Hospital Volume and Late Survival After Pancreaticoduodenectomy. *Surgery* 1999; 126(2): 178-83.
 63. Fong Y, Gonen M, Rubin D, Radzyner M, Brennan MF. Long-Term Survival Is Superior After Resection for Cancer in High-Volume Centers. *Ann Surg* 2005; 242(4): 540-4.
 64. Glasgow RE, Mulvihill SJ. Hospital Volume Influences Outcome in Patients Undergoing Pancreatic Resection for Cancer. *West J Med* 1996; 165(5): 294-300.
 65. Ho V, Heslin MJ. Effect of Hospital Volume and Experience on in-Hospital Mortality for Pancreaticoduodenectomy. *Ann Surg* 2003; 237(4): 509-14.
 66. Kotwall CA, Maxwell JG, Brinker CC, Koch GG, Covington DL. National Estimates of Mortality Rates for Radical Pancreaticoduodenectomy in 25,000 Patients. *Ann Surg Oncol* 2002; 9(9): 847-54.
 67. Lieberman MD, Kilburn H, Lindsey M, Brennan MF. Relation of Perioperative Deaths to Hospital Volume Among Patients Undergoing Pancreatic Resection for Malignancy. *Ann Surg* 1995; 222(5): 638-45.
 68. Neoptolemos JP, Russell RC, Bramhall S, Theis B. Low Mortality Following Resection for Pancreatic and Periampullary Tumours in 1026 Patients: UK Survey of Specialist Pancreatic Units. UK Pancreatic Cancer Group. *Br J Surg* 1997; 84(10): 1370-6.
 69. Nordback L, Parviainen M, Raty S, Kuivanen H, Sand J. Resection of the Head of the Pancreas in Finland: Effects of Hospital and Surgeon on Short-Term and Long-Term Results. *Scand J Gastroenterol* 2002; 37(12): 1454-60.
 70. Simunovic M, Rempel E, Theriault ME, Coates A, Whelan T, Holowaty E, Langer B, Levine M. Influence of Hospital Characteristics on Operative Death and Survival of Patients After Major Cancer Surgery in Ontario. *Can J Surg* 2006; 49(4): 251-8.
 71. Sosa JA, Bowman HM, Gordon TA, Bass EB, Yeo CJ, Lillemoe KD, Pitt HA, Tielsch JM, Cameron JL. Importance of Hospital Volume in the Overall Management of Pancreatic Cancer. *Ann Surg* 1998; 228(3): 429-38.

72. Birkmeyer JD, Sun Y, Goldfaden A, Birkmeyer NJ, Stukel TA. Volume and Process of Care in High-Risk Cancer Surgery. *Cancer* 2006; 106(11): 2476-81.
73. Choti MA, Bowman HM, Pitt HA, Sosa JA, Sitzmann JV, Cameron JL, Gordon TA. Should Hepatic Resections Be Performed at High-Volume Referral Centers? *J Gastrointest Surg* 1998; 2(1): 11-20.
74. Dimick JB, Pronovost PJ, Cowan JA, Jr., Lipsett PA. Postoperative Complication Rates After Hepatic Resection in Maryland Hospitals. *Arch Surg* 2003; 138(1): 41-6.
75. Dimick JB, Wainess RM, Cowan JA, Upchurch GR, Jr., Knol JA, Colletti LM. National Trends in the Use and Outcomes of Hepatic Resection. *J Am Coll Surg* 2004; 199(1): 31-8.
76. Gordon TA, Bowman HM, Bass EB, Lillemoe KD, Yeo CJ, Heitmiller RF, Choti MA, Burleyson GP, Hsieh G, Cameron JL. Complex Gastrointestinal Surgery: Impact of Provider Experience on Clinical and Economic Outcomes. *J Am Coll Surg* 1999; 189(1): 46-56.
77. Billingsley KG, Morris AM, Dominitz JA, Matthews B, Dobie S, Barlow W, Wright GE, Baldwin LM. Surgeon and Hospital Characteristics As Predictors of Major Adverse Outcomes Following Colon Cancer Surgery: Understanding the Volume-Outcome Relationship. *Arch Surg* 2007; 142(1): 23-31.
78. Marusch F, Koch A, Schmidt U, Zippel R, Lehmann M, Czarnetzki HD, Knoop M, Geissler S, Pross M, Gastinger I, Lippert H. Effect of Caseload on the Short-Term Outcome of Colon Surgery: Results of a Multicenter Study. *Int J Colorectal Dis* 2001; 16(6): 362-9.
79. Schrag D, Panageas KS, Riedel E, Hsieh L, Bach PB, Guillem JG, Begg CB. Surgeon Volume Compared to Hospital Volume As a Predictor of Outcome Following Primary Colon Cancer Resection. *J Surg Oncol* 2003; 83(2): 68-78.
80. Meyerhardt JA, Catalano PJ, Schrag D, Ayanian JZ, Haller DG, Mayer RJ, Macdonald JS, Benson AB, III, Fuchs CS. Association of Hospital Procedure Volume and Outcomes in Patients With Colon Cancer at High Risk for Recurrence. *Ann Intern Med* 2003; 139(8): 649-57.
81. Rabeneck L, Davila JA, Thompson M, El Serag HB. Surgical Volume and Long-Term Survival Following Surgery for Colorectal Cancer in the Veterans Affairs Health-Care System. *Am J Gastroenterol* 2004; 99(4): 668-75.
82. Prystowsky JB, Bordage G, Feinglass JM. Patient Outcomes for Segmental Colon Resection According to Surgeon's Training, Certification, and Experience. *Surgery* 2002; 132(4): 663-70.
83. McArdle CS, Hole DJ. Influence of Volume and Specialization on Survival Following Surgery for Colorectal Cancer. *Br J Surg* 2004; 91(5): 610-7.
84. Harling H, Bulow S, Moller LN, Jorgensen T. Hospital Volume and Outcome of Rectal Cancer Surgery in Denmark 1994-99. *Colorectal Dis* 2005; 7(1): 90-5.

85. Hodgson DC, Zhang W, Zaslavsky AM, Fuchs CS, Wright WE, Ayanian JZ. Relation of Hospital Volume to Colostomy Rates and Survival for Patients With Rectal Cancer. *J Natl Cancer Inst* 2003; 95(10): 708-16.
86. Schrag D, Panageas KS, Riedel E, Cramer LD, Guillem JG, Bach PB, Begg CB. Hospital and Surgeon Procedure Volume As Predictors of Outcome Following Rectal Cancer Resection. *Ann Surg* 2002; 236(5): 583-92.
87. Marusch F, Koch A, Schmidt U, Pross M, Gastinger I, Lippert H. Hospital Caseload and the Results Achieved in Patients With Rectal Cancer. *Br J Surg* 2001; 88(10): 1397-402.
88. Meyerhardt JA, Tepper JE, Niedzwiecki D, Hollis DR, Schrag D, Ayanian JZ, O'Connell MJ, Weeks JC, Mayer RJ, Willett CG, Macdonald JS, Benson AB, III, Fuchs CS. Impact of Hospital Procedure Volume on Surgical Operation and Long-Term Outcomes in High-Risk Curatively Resected Rectal Cancer: Findings From the Intergroup 0114 Study. *J Clin Oncol* 2004; 22(1): 166-74.
89. Engel J, Kerr J, Eckel R, Gunther B, Heiss M, Heitland W, Siewert JR, Jauch KW, Holzel D. Influence of Hospital Volume on Local Recurrence and Survival in a Population Sample of Rectal Cancer Patients. *Eur J Surg Oncol* 2005; 31(5): 512-20.
90. Wibe A, Eriksen MT, Syse A, Tretli S, Myrvold HE, Soreide O. Effect of Hospital Caseload on Long-Term Outcome After Standardization of Rectal Cancer Surgery at a National Level. *Br J Surg* 2005; 92(2): 217-24.
91. Martling A, Cedermark B, Johansson H, Rutqvist LE, Holm T. The Surgeon As a Prognostic Factor After the Introduction of Total Mesorectal Excision in the Treatment of Rectal Cancer. *Br J Surg* 2002; 89(8): 1008-13.
92. Engel AF, Oomen JL, Knol DL, Cuesta MA. Operative Mortality After Colorectal Resection in the Netherlands. *Br J Surg* 2005; 92(12): 1526-32.
93. Harmon JW, Tang DG, Gordon TA, Bowman HM, Choti MA, Kaufman HS, Bender JS, Duncan MD, Magnuson TH, Lillemoe KD, Cameron JL. Hospital Volume Can Serve As a Surrogate for Surgeon Volume for Achieving Excellent Outcomes in Colorectal Resection. *Ann Surg* 1999; 230(3): 404-11.
94. Rogers SO, Jr., Wolf RE, Zaslavsky AM, Wright WE, Ayanian JZ. Relation of Surgeon and Hospital Volume to Processes and Outcomes of Colorectal Cancer Surgery. *Ann Surg* 2006; 244(6): 1003-11.
95. Renzulli P, Lowy A, Maibach R, Egeli RA, Metzger U, Laffer UT. The Influence of the Surgeon's and the Hospital's Caseload on Survival and Local Recurrence After Colorectal Cancer Surgery. *Surgery* 2006; 139(3): 296-304.
96. Kee F, Wilson RH, Harper C, Patterson CC, McCallion K, Houston RF, Moorehead RJ, Sloan JM, Rowlands BJ. Influence of Hospital and Clinician Workload on Survival From Colorectal Cancer: Cohort Study. *BMJ* 1999; 318(7195): 1381-5.

97. Bach PB, Cramer LD, Schrag D, Downey RJ, Gelfand SE, Begg CB. The Influence of Hospital Volume on Survival After Resection for Lung Cancer. *N Engl J Med* 2001; 345(3): 181-8.
98. Goodney PP, Lucas FL, Stukel TA, Birkmeyer JD. Surgeon Specialty and Operative Mortality With Lung Resection. *Ann Surg* 2005; 241(1): 179-84.
99. Goodney PP, Lucas FL, Stukel TA, Birkmeyer JD. Surgeon Specialty and Operative Mortality With Lung Resection. *Ann Surg* 2005; 241(1): 179-84.
100. Elting LS, Pettaway C, Bekele BN, Grossman HB, Cooksley C, Avritscher EB, Saldin K, Dinney CP. Correlation Between Annual Volume of Cystectomy, Professional Staffing, and Outcomes: a Statewide, Population-Based Study. *Cancer* 2005; 104(5): 975-84.
101. Konety BR, Dhawan V, Allareddy V, Joslyn SA. Impact of Hospital and Surgeon Volume on in-Hospital Mortality From Radical Cystectomy: Data From the Health Care Utilization Project. *J Urol* 2005; 173(5): 1695-700.
102. Konety BR, Allareddy V, Modak S, Smith B. Mortality After Major Surgery for Urologic Cancers in Specialized Urology Hospitals: Are They Any Better? *J Clin Oncol* 2006; 24(13): 2006-12.
103. McCabe JE, Jibawi A, Javle P. Defining the Minimum Hospital Case-Load to Achieve Optimum Outcomes in Radical Cystectomy. *BJU Int* 2005; 96(6): 806-10.
104. Taub DA, Miller DC, Cowan JA, Dimick JB, Montie JE, Wei JT. Impact of Surgical Volume on Mortality and Length of Stay After Nephrectomy. *Urology* 2004; 63(5): 862-7.
105. Begg CB, Riedel ER, Bach PB, Kattan MW, Schrag D, Warren JL, Scardino PT. Variations in Morbidity After Radical Prostatectomy. *N Engl J Med* 2002; 346(15): 1138-44.
106. Ellison LM, Heaney JA, Birkmeyer JD. The Effect of Hospital Volume on Mortality and Resource Use After Radical Prostatectomy. *J Urol* 2000; 163(3): 867-9.
107. Yao SL, Lu-Yao G. Population-Based Study of Relationships Between Hospital Volume of Prostatectomies, Patient Outcomes, and Length of Hospital Stay. *J Natl Cancer Inst* 1999; 91(22): 1950-6.
108. Hu JC, Gold KF, Pashos CL, Mehta SS, Litwin MS. Role of Surgeon Volume in Radical Prostatectomy Outcomes. *J Clin Oncol* 2003; 21(3): 401-5.
109. Elit L, Bondy SJ, Paszat L, Przybysz R, Levine M. Outcomes in Surgery for Ovarian Cancer. *Gynecol Oncol* 2002; 87(3): 260-7.
110. Schrag D, Earle C, Xu F, Panageas KS, Yabroff KR, Bristow RE, Trimble EL, Warren JL. Associations Between Hospital and Surgeon Procedure Volumes and Patient Outcomes After Ovarian Cancer Resection. *J Natl Cancer Inst* 2006; 98(3): 163-71.

111. Goff BA, Matthews BJ, Wynn M, Muntz HG, Lishner DM, Baldwin LM. Ovarian Cancer: Patterns of Surgical Care Across the United States. *Gynecol Oncol* 2006; 103(2): 383-90.
112. Ioka A, Tsukuma H, Ajiki W, Oshima A. Influence of Hospital Procedure Volume on Ovarian Cancer Survival in Japan, a Country With Low Incidence of Ovarian Cancer. *Cancer Sci* 2004; 95(3): 233-7.
113. Kumpulainen S, Grenman S, Kyyronen P, Pukkala E, Sankila R. Evidence of Benefit From Centralised Treatment of Ovarian Cancer: a Nationwide Population-Based Survival Analysis in Finland. *Int J Cancer* 2002; 102(5): 541-4.
114. Junor EJ, Hole DJ, McNulty L, Mason M, Young J. Specialist Gynaecologists and Survival Outcome in Ovarian Cancer: a Scottish National Study of 1866 Patients. *Br J Obstet Gynaecol* 1999; 106(11): 1130-6.
115. Gilligan MA, Neuner J, Zhang X, Sparapani R, Laud PW, Nattinger AB. Relationship Between Number of Breast Cancer Operations Performed and 5-Year Survival After Treatment for Early-Stage Breast Cancer. *Am J Public Health* 2007; 97(3): 539-44.
116. Harcourt KF, Hicks KL. Is There a Relationship Between Case Volume and Survival in Breast Cancer? *Am J Surg* 2003; 185(5): 407-10.
117. Nomura E, Tsukuma H, Ajiki W, Ishikawa O, Oshima A. Population-Based Study of the Relationship Between Hospital Surgical Volume and 10-Year Survival of Breast Cancer Patients in Osaka, Japan. *Cancer Sci* 2006; 97(7): 618-22.
118. Polednak AP. Hospital Volume and Survival of Breast Cancer Patients in Connecticut. *Am J Public Health* 1999; 89(6): 946-7.
119. Roohan PJ, Bickell NA, Baptiste MS, Therriault GD, Ferrara EP, Siu AL. Hospital Volume Differences and Five-Year Survival From Breast Cancer. *Am J Public Health* 1998; 88(3): 454-7.
120. Skinner KA, Helsper JT, Deapen D, Ye W, Sposto R. Breast Cancer: Do Specialists Make a Difference? *Ann Surg Oncol* 2003; 10(6): 606-15.
121. Guller U, Safford S, Pietrobon R, Heberer M, Oertli D, Jain NB. High Hospital Volume Is Associated With Better Outcomes for Breast Cancer Surgery: Analysis of 233,247 Patients. *World J Surg* 2005; 29(8): 994-9.
122. Allgood PC, Bachmann MO. Effects of Specialisation on Treatment and Outcomes in Screen-Detected Breast Cancers in Wales: Cohort Study. *Br J Cancer* 2006; 94(1): 36-42.
123. Ingram DM, McEvoy SP, Byrne MJ, Fritschi L, Joseph DJ, Jamrozik K. Surgical Caseload and Outcomes for Women With Invasive Breast Cancer Treated in Western Australia. *Breast* 2005; 14(1): 11-7.
124. Sainsbury R, Haward B, Rider L, Johnston C, Round C. Influence of Clinician Workload and Patterns of Treatment on Survival From Breast Cancer. *Lancet* 1995; 345(8960): 1265-70.

125. **Stefoski MJ, Haward RA, Johnston C, Sainsbury R, Forman D. Surgeon Workload and Survival From Breast Cancer. *Br J Cancer* 2003; 89(3): 487-91.**

ACCEPTED MANUSCRIPT