



HAL
open science

SITAR - a useful instrument for growth curve analysis

Tim J Cole, Malcolm D C Donaldson, Yoav Ben-Shlomo

► **To cite this version:**

Tim J Cole, Malcolm D C Donaldson, Yoav Ben-Shlomo. SITAR - a useful instrument for growth curve analysis. *International Journal of Epidemiology*, 2010, 10.1093/ije/DYQ115 . hal-00609750

HAL Id: hal-00609750

<https://hal.science/hal-00609750>

Submitted on 20 Jul 2011

HAL is a multi-disciplinary open access archive for the deposit and dissemination of scientific research documents, whether they are published or not. The documents may come from teaching and research institutions in France or abroad, or from public or private research centers.

L'archive ouverte pluridisciplinaire **HAL**, est destinée au dépôt et à la diffusion de documents scientifiques de niveau recherche, publiés ou non, émanant des établissements d'enseignement et de recherche français ou étrangers, des laboratoires publics ou privés.

SITAR – a useful instrument for growth curve analysis

Journal:	<i>International Journal of Epidemiology</i>
Manuscript ID:	IJE-2010-01-0060.R1
Manuscript Type:	Original Article
Key Words:	Height, puberty, Turner syndrome, growth curve, random effects

SITAR – a useful instrument for growth curve analysis

Tim J Cole,^{1*} Malcolm D C Donaldson² and Yoav Ben-Shlomo³

¹ MRC Centre of Epidemiology for Child Health, UCL Institute of Child Health,
London, UK

² University of Glasgow Department of Child Health, Royal Hospital for Sick
Children, Glasgow, UK

³ Department of Social Medicine, University of Bristol, Bristol, UK

* Corresponding author. Professor Tim Cole, MRC Centre of Epidemiology for Child
Health, UCL Institute of Child Health, 30 Guilford Street, London WC1N 1EH, UK

Phone: 020 7905 2362

Fax: 020 7905 2381

E-mail: tim.cole@ich.ucl.ac.uk

Word count (main text plus abstract): 4018

Key messages

- SITAR is a shape-invariant growth curve model that summarises individual growth curves with a single summary curve and subject-specific random effects
- The random effects reflect each subject's size, growth tempo and growth velocity
- Two examples demonstrate that the model explains virtually all inter-individual variability in height growth during puberty
- This suggests that height growth variability arises from differences in subjects' internal body clocks
- The random effects are useful to relate growth to preceding exposures and later outcomes

Summary

Background Growth curve analysis is a statistical issue in life course epidemiology. Height in puberty involves a growth spurt whose timing and intensity varies between individuals. Such data can be summarised with individual Preece-Baines (PB) curves, and their five parameters then related to earlier exposures or later outcomes. But it involves fitting many curves.

Methods We present an alternative SuperImposition by Translation And Rotation (SITAR) model, a shape invariant model with a single fitted curve. Curves for individuals are matched to the mean curve by shifting their curve up-down (representing differences in mean size) and left-right (for differences in growth tempo), and the age scale is also shrunk or stretched to indicate how fast time passes in the individual (i.e. velocity). These three parameters per individual are estimated as random effects while fitting the curve. The outcome is a mean curve plus triplets of parameters per individual (size, tempo and velocity) that summarise the individual growth patterns.

Data: heights for Christ's Hospital School (CHS) boys aged 9-19 years ($N=3245$, $n=129\ 508$), and Turner Syndrome (TS) girls aged 9-18 years from the UK Turner Study ($N=105$, $n=1321$).

Results The SITAR model explained 99% of the variance in both datasets (RSD 6-7 mm), matching the fit of individually-fitted PB curves. In CHS, growth tempo was associated with IGF-1 measured 50 years later ($P=0.01$, $N=1009$). For the TS girls randomised to receive oxandrolone from 9 years, velocity was substantially increased compared to placebo ($P=10^{-8}$).

Conclusions The SITAR growth curve model is a useful epidemiological instrument for the analysis of height in puberty.

Keywords Height, puberty, Turner syndrome, growth curve, random effects

Introduction

A child's growth curve contains considerable information about their genetic make-up and environmental exposure.¹ It can be useful to characterise the nature of the curve and relate it both to previous or current exposures and putative later outcomes.² Thus the characterisation of the growth curve is an important first stage in the life course study of early growth and later outcome.

By its nature the growth curve consists of a series of highly correlated measurements, and it is important to reduce the dimensionality of the data to simplify comparisons between individual children. The traditional approach is to identify a suitable parametric model for the given measurement and age range, for example the Jenss-Bayley curve³ for weight in early life or the Preece-Baines curve⁴ for height in puberty. The growth curve is then entirely characterised by the fitted parameters of the model, which can be used instead of the raw data to test for associations with exposure and/or outcome.

This paper focuses on height in puberty, where the Preece-Baines curve with its five estimated parameters fits individual growth curves extremely well, with a residual standard deviation of 6-7 mm.^{4,5} However as a summary of the underlying curve its five parameters are relatively high-dimensional for many purposes.

The ideal approach would be to fit a form of curve to all subjects simultaneously, and to estimate the subject-specific parameter values as subject random effects. Such an approach could in principle be applied to the Preece-Baines curve. However Beath⁶ introduced a considerable simplification to the analysis of growth curves by describing a *shape invariant model* of infant weight. This consists of a single growth

1
2
3 curve which can be applied to all subjects by applying just three subject-specific
4
5 translations and rotations of the curve to fit the individual subject growth curves.
6
7

8
9 The aim here is to fit the model described by Beath⁶ and show how effectively it
10
11 summarises height growth around the time of puberty. The second aim is to show how
12
13 the estimated subject-specific parameters can be related to earlier exposures and later
14
15 outcomes.
16
17

18 19 **Methods**

20 21 *Data sets*

22
23
24
25
26
27 Two data sets are used as examples, both of height in puberty. The first, the Christ's
28
29 Hospital School (CHS) cohort, consisted of a sample of 3245 boys, who attended the
30
31 School at some stage between 1939 and 1968 and were measured twice a term
32
33 between the ages of 9 and 19 years (median 42 measurements per boy, interquartile
34
35 range 35 to 47, range 1 to 63), a total of 129 508 heights. These were linked to follow-
36
37 up data on 1520 adults, some 50 years later, when *inter alia* height and IGF-1 levels
38
39 were measured. The cohort has been described in detail previously,⁷⁻⁹ and an inverse
40
41 association between age at peak height velocity (APHV) and later IGF-1 has been
42
43 reported.⁹ This was based on estimates of APHV for each child derived from spline
44
45 curves fitted to each child's data.
46
47
48
49

50
51
52 The second data set came from a randomised clinical trial of oxandrolone to increase
53
54 final height in girls with Turner Syndrome (TS). This is a chromosomal disorder
55
56 where the second X chromosome is missing or malformed, leading to short stature
57
58 and primary ovarian failure. One hundred and six TS girls already on a standard dose
59
60 of growth hormone were randomised to receive either oxandrolone or placebo from

1
2
3 the age of 9 years (or the age at recruitment if later) until final height was reached.
4
5 One girl dropped out immediately and 13 more later on, while 92 girls remained in the
6
7 study and 82 had reached final height before the time of analysis. A total of 1321
8
9 heights were included in the analysis (median 12 per child, IQR 9 to 17, range 1 to
10
11 23). The trial, which also included a second randomisation to early or late oestrogen
12
13 for induction of puberty, is reported in detail elsewhere.¹⁰
14
15
16
17

18 ***The SITAR model***

19
20 The method used to summarise the individual growth curves followed that of Beath,⁶
21
22 and was also an extension of the model developed independently by the first author
23
24 and colleagues.⁷ This is a shape invariant model^{11, 12} which involves fitting the
25
26 following random effects model to the set of height growth curves:
27
28
29
30
31
32

$$33 \quad y_{it} = \alpha_i + h\left(\frac{t - \beta_i}{\exp(-\gamma_i)}\right) \quad (1)$$

34
35 where y_{it} is height for subject i at age t , $h(t)$ is a natural cubic spline curve of height
36
37 versus age, and α_i , β_i and γ_i are subject-specific random effects. The aim is to choose
38
39 the values of α_i , β_i and γ_i to make the individual growth curves as similar as possible,
40
41 i.e. the mean spline curve $h(t)$. Their interpretations are as follows:
42
43
44
45
46
47

- 48
49 • α_i is a random height intercept that adjusts for differences in mean height – here it
50
51 is termed *size*. Geometrically it can be thought of as a subject-specific shift up or
52
53 down or *translation* in the spline curve, with α_i smaller for shorter children.
54
55
- 56
57 • β_i is a random age intercept to adjust for differences in the timing of the pubertal
58
59 growth spurt in individuals i.e. the age at peak height velocity, and it is here called
60

1
2
3 *tempo* following Tanner's usage. Geometrically it corresponds to a subject-
4
5 specific left-right shift or translation in the spline curve, with β_i negative for early
6
7 puberty and positive for late.
8
9

- 10
11 • γ_i is a random age scaling that adjusts for the duration of the growth spurt in
12
13 individuals. Its parameterisation as $\exp(-\gamma_i)$ ensures that both positive and
14
15 negative values are permissible, with zero corresponding to average velocity, and
16
17 the minus sign means that it measures velocity rather than its inverse. (This minus
18
19 sign is the reverse of Beath's notation.) Geometrically it corresponds to a
20
21 shrinking or stretching of the age scale. Thus for a child with a relatively short
22
23 spurt and a steep growth curve, γ_i is positive to stretch the age scale and reduce
24
25 the slope (i.e. peak velocity). Conversely if γ_i is negative the age scale is shrunk
26
27 and the curve slope increased. For this reason the parameter is termed *velocity*.
28
29 Note that its effect is to make growth curves steeper or shallower, so it effectively
30
31 *rotates* each curve (this terminology makes clear its similarity to a random slope
32
33 effect, though strictly it is a scale change rather than a rotation).
34
35
36
37
38
39
40

41 Figure 1 illustrates the meanings of the three parameters geometrically, i.e. the three
42
43 ways in which the mean growth curve (black solid line) can be transformed to match
44
45 an individual's growth curve. Size is an up-down shift on the height axis (red dashed
46
47 lines) and tempo is a right-left shift on the age axis (blue long dashed lines), while
48
49 velocity is a shrinking-stretching of the age axis (green dot-dashed lines). The pairs of
50
51 lines represent 95% of the population variation (i.e. ± 2 SDs). The principle is that by
52
53 suitable choice of these subject-specific parameters, smoothed estimates of each
54
55 individual growth curve can be obtained by transformation of the mean curve. This
56
57
58
59
60 leads to a particularly simple way of assessing goodness of fit. If the model fits well,

1
2
3 each individual curve can be back-transformed using the subject's triplet of estimated
4 parameters, and all the curves should then sit on top of the mean curve. Expressed in
5
6 words, the model allows individual curves to be Super-Imposed by Translation And
7
8 Rotation, leading to the happy acronym SITAR. This then is the SITAR model for
9
10 growth curve analysis.
11
12

13
14
15
16 The model was fitted using the `nlmef` function¹³ in R,¹⁴ with the age term centred to
17
18 mean zero, the three parameters fitted as random effects and size and velocity also as
19
20 fixed effects, and $h(t)$ a natural cubic spline curve with 6 degrees of freedom (d.f.)
21
22 fitted as fixed effects. Height and age were fitted both untransformed and log
23
24 transformed, to identify the optimal underlying scales.
25
26
27

28 29 ***Growth related to exposure and outcome*** 30

31
32 In the CHS cohort, the relationships between the SITAR parameters and the outcome
33
34 measures of height and IGF-1 at follow-up 50 years later were investigated using
35
36 correlation and regression.
37
38

39
40 The analysis of the TS clinical trial data involved comparing the SITAR parameters in
41
42 individuals in the two trial arms. This was done in three ways:
43
44

- 45
46 1. comparing the mean values of each growth parameter in the two arms using
47
48 t-tests;
49
50
- 51
52 2. extending the SITAR model to include fixed effects for each parameter by trial
53
54 arm;
55
56
- 57
58 3. fitting the SITAR model to the data for each trial arm separately, to demonstrate
59
60 differences in the two mean curves.

1
2
3 The first two approaches test the effect of the oxandrolone intervention on the
4 parameters, while the third shows its effect on the mean growth curve.
5
6
7

8 9 **Results**

10 11 12 *The SITAR model*

13
14
15
16 The SITAR model fitted the CHS data best on the scales of height and log age. Table
17
18 1 shows the deviances and residual standard deviations (RSD) for the alternative
19 models in the CHS and TS datasets, confirming that for CHS log age provided a far
20 better fit than age (deviance 1460 units smaller), and height was better than log
21 height. Despite this the effect on the RSD was small. For the TS data height and age
22 were slightly better than height and log age by 19 units of deviance.
23
24
25
26
27
28
29
30
31
32

33
34
35
36
37
38
39
40
41
42
43
44
45
46
47
48
49
50
51
52
53
54
55
56
57
58
59
60
Table 1 here

35 In general a shift on the log scale translates to a scaling on the original scale. So a left-
36 right shift on the log age scale corresponds to a shrinking-stretching on the age scale.
37 Thus for the log age model the age scale can be viewed as elastic and fixed at zero,
38 with the scale shrunk for early puberty and stretched for later puberty.
39
40
41
42
43
44

45 Figure 2 shows the raw data for the CHS cohort, a series of superimposed growth
46 curves colour-coded to identify individuals. The RSD about the fitted spline curve is
47 6.6 cm (not shown). Figure 3 shows the incremental effect of adjusting for each of the
48 SITAR parameters in turn, where each subject's growth curve is plotted using the
49 individually adjusted height and age scales. In Figure 3a a random height offset (i.e.
50 the size parameter α) is adjusted for, so that individual curves are shifted up or down
51 to minimise the RSD, which is reduced to 2.3 cm. In Figure 3b a random age offset is
52
53
54
55
56
57
58
59
60

1
2
3 added (the tempo parameter β), which shifts individual curves left-right and reduces
4 the RSD to 1.2 cm. Finally in Figure 3c the age scaling is added (the velocity
5 parameter γ), which shrinks-stretches individual curves and reduces the RSD to 0.8
6 cm. The three graphs show increasingly obvious spiky outliers above and below the
7 main body of data, corresponding to height recording errors at the time of
8 measurement. To adjust for this, Figure 3d trims residuals exceeding 2.4 cm in
9 absolute value ($n = 952$ or 0.74%) so as to remove the spikes but retain the main body
10 of data. This reduces the RSD to 0.7 cm.
11
12
13
14
15
16
17
18
19
20
21
22

23 Thus the estimation of, and adjustment for, the SITAR parameters reduces the RSD
24 from 6.6 cm to 0.7 cm, a reduction in variance of 98.9%. The final RSD is similar to
25 the median RSD for Preece-Baines curves fitted to each individual.^{4,5}
26
27
28
29
30

31 Table 2 gives the standard deviations and correlations of the growth parameter
32 random effects for the model in Figure 3c. Size is in units of cm, tempo is fractional
33 due to the log age scale and velocity is a fractional multiplier (the latter two can
34 multiplied by 100 and viewed as percentages). Multiplying tempo by mean APHV
35 (14.3 years) converts it to years, giving an SD of 0.97 years. The three growth
36 parameters correlate with each other at around +0.3, indicating that boys entering
37 puberty later (positive tempo β) tend to be taller (larger size α) and have a larger peak
38 velocity (γ).
39
40
41
42
43
44
45
46
47
48
49
50

51 Table 2 here
52
53

54 Figure 4 shows the individual raw and SITAR-adjusted growth curves for the TS
55 cohort, colour coded by trial arm. The raw RSD is 5.9 cm, which shrinks to 0.6 cm on
56 adjustment for the three parameters. Thus again 99% of the variance is explained by
57 the SITAR model, and the remaining variability matches that of the Preece-Baines
58
59
60

1
2
3 curve. On this basis it can be argued that the three SITAR parameters explain *all* the
4 differences in growth between individuals, so that they constitute a parsimonious
5 summary of the individual growth curves.
6
7
8

9
10
11 Table 3 summarises the growth parameter random effects for the model in Figure 4.
12 Size is in units of cm and tempo in years, while again velocity is dimensionless. The
13 tempo-velocity correlation of -0.46 differs from the +0.26 for the Christ's Hospital
14 data, and shows that girls entering puberty early tend to have the largest height
15 velocity. (Endocrinological note – most of the Turner girls did not enter puberty
16 spontaneously, it was induced artificially, so tempo here relates more to the later fall
17 in velocity than the earlier rise.)
18
19
20
21
22
23
24
25
26
27
28

29 Table 3 here
30

31 ***Growth related to exposure and outcome*** 32 33

34
35
36 Table 4 relates the CHS pubertal height parameters to the clinical outcomes 50 years
37 later. It shows summary statistics and correlations with the three SITAR parameters of
38 age, height and IGF-1 as measured at mean age 63 years.⁹ In addition it gives age at
39 peak height velocity (APHV) as derived individually for each child.⁹
40
41
42
43
44
45
46
47
48
49

50 Table 4 here
51

52 Size and height are very strongly correlated ($r = 0.86$), though tempo and velocity also
53 correlate with height to some extent. To clarify their relative contributions, Table 5
54 shows the multiple regression of later height on the three parameters, where the
55 standardised coefficients indicate the effect on height of a 1 SD increase in each
56 parameter. This confirms that size is by far the strongest predictor (+5.5 cm per SD),
57
58
59
60

1
2
3 though both tempo and velocity are also predictive in opposite directions (-0.6 and
4
5 +0.5 cm per SD respectively).
6
7

8
9 Table 5 here
10

11
12 Table 4 also shows a strong correlation between tempo and APHV (0.83). So tempo is
13
14 closely related to APHV though their SDs differ – 1.6 cm for APHV versus 0.97 cm
15
16 for scaled tempo.
17

18
19 The next strongest correlations (0.20-0.22) are for age with tempo, APHV and IGF-1.
20
21 These represent secular trends over the period of data collection (1939-68), with
22
23 puberty becoming earlier and IGF-1 higher. Finally there are smaller correlations of
24
25 tempo and APHV with IGF-1 (-0.12 and -0.13 respectively, $P < 0.0002$). Thus the
26
27 tempo of puberty (but not size or velocity) is strongly correlated with IGF-1 50 years
28
29 later, and tempo and APHV are equally predictive.
30
31
32
33

34
35 As tempo and IGF-1 are both correlated with age, the tempo versus IGF-1 association
36
37 could be due to the secular trend. Adjusting for age confirms this, the correlation of
38
39 IGF-1 with tempo or APHV falling to -0.08 ($P = 0.01$, $N = 1009$).
40
41
42

43
44 Turning to the TS cohort, Figure 5 compares the individual growth parameter values
45
46 by trial arm. There are small oxandrolone effects for size (+2.6 cm, 95% CI 0.4 to 4.7,
47
48 $P = 0.02$) and tempo (-0.3 years, -0.7 to +0.1, $P = 0.1$), but velocity is dramatically
49
50 larger in the oxandrolone arm (+23%, 16% to 30%, $P = 10^{-8}$). Refitting the SITAR
51
52 model with fixed parameter effects for differences between trial arms confirms this
53
54 pattern (not shown). Figure 6 shows the summary spline curves, each with 4 d.f.,
55
56 obtained for the two trial arms separately, and they demonstrate the steeper velocity in
57
58
59
60

1
2
3 the oxandrolone arm. Analysis of the final height data confirms that oxandrolone
4
5 increases final height by 4.5 cm (1.9 to 7.2, $P = 0.001$).¹⁰
6
7

8 9 **Discussion**

10
11
12 The findings show that Beath's shape invariant model is useful for analysing the
13
14 pubertal height growth curve, both in boys and girls. As well as providing the mean
15
16 growth curve it summarises the departure of each individual curve from the mean in
17
18 terms of three biologically meaningful parameters: size, tempo and velocity.
19
20

21
22 Furthermore the model explains effectively all the heterogeneity in growth between
23
24 individuals, as the residual variability about the fitted curves is no greater than that
25
26 obtained by fitting individual Preece-Baines curves.^{4,5} The name SITAR is proposed
27
28 for the model as it **SuperImposes by Translation And Rotation**.
29
30

31
32 The SITAR model has some similarities with the random intercept-random slope
33
34 model, in that size is a random intercept and velocity can be viewed as a random
35
36 slope. However where the two differ is that SITAR expects a nonlinear mean curve,
37
38 and this allows the tempo random effect to be estimated – if the mean curve were
39
40 linear the size and tempo effects would be indistinguishable. Thus the most innovative
41
42 aspect of SITAR is its random shift on the age scale.
43
44
45
46
47

48 The SITAR model should also be useful for endocrinologists in that it clarifies the
49
50 nature of growth in puberty. The substantial population heterogeneity in pubertal
51
52 height velocity shows itself as variability in peak height velocity (PHV) and APHV.
53
54 However these two quantities are effectively the same as the SITAR parameters
55
56 velocity and tempo, and the present analysis makes clear that these parameters explain
57
58 *all* the differences in growth velocity in both the CHS and TS cohorts. Note that the
59
60

1
2
3 size parameter, which defines mean height and hence is important to set the relative
4 position of the height distance curve, has no effect on the height velocity curve. The
5 SITAR parameterisation shows that differences in height velocity between individuals
6 are entirely explained by differences in their internal “growth body clock”.
7
8
9

10
11
12
13 The correlations between the three growth parameters indicate that CHS boys entering
14 puberty later tend to be taller and have a larger peak velocity (Table 2). TS girls show
15 similar correlations except that tempo and velocity are inversely related, with early
16 puberty associated with greater velocity (Table 3). This accords with the fact that only
17 a minority of Turner girls enter puberty spontaneously – the others have puberty
18 induced artificially with oestrogen therapy, and their growth spurt is much smaller.
19
20
21
22
23
24
25
26
27

28
29 The positive correlation between size and tempo appears to contradict the previously
30 reported negative correlation between height at school entry and APHV.⁹ Clearly the
31 correlations of the growth parameters with height at any particular age depend on the
32 values of the other parameters, as seen in Table 5 for later height. Repeating this
33 analysis for height at different ages in puberty shows that for size, a 1 SD increase
34 predicts a ~6 cm increase in height at all ages (which fits with the SDs of ~6 cm for
35 size in Tables 2 and 3). For tempo, a 1 SD increase is associated consistently with a
36 reduction in predicted height, peaking at -7 cm at age 14. Thus around APHV the
37 tempo effect eclipses the size effect. For velocity the effect is smaller, ranging from -2
38 to +1 cm. So conditional on the other parameters, tempo is consistently inversely
39 associated with height at any particular age, which accords with the earlier finding.⁹
40
41
42
43
44
45
46
47
48
49
50
51
52
53
54
55

56 The SITAR model is useful for relating individual growth parameters to previous
57 exposures and/or later outcomes. The TS example shows how SITAR provides a
58 parsimonious analysis of the growth clinical trial, where the oxandrolone intervention
59
60

1
2
3 is not only highly effective, but also is seen to operate primarily by increasing growth
4
5
6 velocity (γ) rather than tempo (β) or size (α). The strength of the oxandrolone effect
7
8 ($P = 10^{-8}$) is remarkable given the modest number of growth curves involved ($N =$
9
10 105). Its effect on the size parameter of +2.6 cm is less than on final height (+4.5 cm)
11
12 as it reflects mean height throughout the study. In fact the Turner study design was
13
14 more complex than described here, with two separate randomisations in a factorial
15
16 design, and the net effect of oxandrolone on final height exceeded 7 cm.¹⁰
17
18
19

20
21 The CHS analysis relates the growth parameters to IGF-1 50 years later, and again
22
23 finds just one of the three parameters to be important, this time tempo. So earlier
24
25 puberty is associated with higher IGF-1 after a lag of 50 years. The association is
26
27 exaggerated by secular trends in tempo and IGF-1, but it remains after adjusting for
28
29 age.
30
31
32

33
34 APHV measured from individual growth curves gives the same results as tempo. The
35
36 high correlation of 0.83 between the two suggests that they are measuring essentially
37
38 the same quantity, albeit on different measurement scales. However tempo is much
39
40 easier to estimate, being a random effect from a single analysis whereas APHV
41
42 involves analysing each individual growth curve.
43
44
45

46 47 ***Discussion of findings*** 48 49

50
51 The fact that the model fits well both in boys and girls, even growth disordered girls
52
53 with Turner Syndrome, highlights its generality. The fit in the CHS boys was far
54
55 better with a log age scale, where a left-right shift on the log age scale corresponds to
56
57 a shrinking-stretching on the age scale anchored at birth. This elasticity of the growth
58
59 curve affects the curve's slope (i.e. velocity), so that it is steeper for individuals with
60

1
2
3 an early puberty and shallower for those reaching puberty later (see Fig 7 of ref ⁷).
4
5 This provides a statistical explanation for the clinical observation that PHV (velocity)
6
7 is inversely correlated with APHV (tempo).¹⁵ Thus log age provides a better fit for
8
9 CHS because it models this correlation. Indeed it over-compensates, as the negative
10
11 correlation of -0.19 between tempo and velocity on the age scale (result not shown)
12
13 switches to +0.28 on the log age scale (Table 2).
14
15
16
17

18 The log age scale did not provide a better fit for the TS girls, which may be due to
19
20 their mean velocity curve lacking a clear peak, due to most of them failing to enter
21
22 puberty spontaneously. Thus there was less opportunity for an association between
23
24 PHV and APHV.
25
26
27

28 ***Strengths and weaknesses***

29
30 The strengths of the study are the two substantial and contrasting datasets that provide
31
32 a useful test of the generality of the SITAR approach. In addition they include
33
34 examples of both exposure-growth and growth-outcome associations, which highlight
35
36 respectively the velocity and tempo parameters of the model.
37
38
39
40
41

42 A weakness of the study is that the results apply only to height in puberty. Their
43
44 relevance to height at other ages, e.g. pre-school, or to other measurements, e.g.
45
46 weight, is not known. That said, Beath's paper describing the method⁶ applied it to
47
48 weight from 0 to 2 years, where it appeared to fit well, though the goodness of fit of
49
50 the model was not examined in the same way as here.
51
52
53
54

55 There is a need for future work to test the generality of the SITAR model, particularly
56
57 in puberty where the heterogeneity of height growth, which appears to depend on the
58
59 individual's time clock, may be related to the timing of changes in sex hormone
60

1
2
3 status. The SITAR approach would be useful to examine hormone status in the same
4
5 way as for height.
6
7

8 9 **Funding**

10
11
12 This work was supported by the Medical Research Council [grant number G0700961
13
14 to TJC].
15
16
17

18 19 **Conflict of interest**

20
21
22 None declared.
23
24

25 26 **Acknowledgements**

27
28
29 We thank the reviewer for comments on the paper.
30
31

32 33 **Contributorship**

34
35
36 All authors have contributed to the drafting of the paper, and have approved the final
37
38 version. TJC is guarantor for the paper. TJC also confirms that the references have
39
40 been checked for accuracy and completeness, and that the manuscript has been
41
42 carefully edited by someone with an excellent mastery of the English language. The
43
44 paper has not previously been published (or submitted for publication) in a
45
46 substantively similar form.
47
48
49
50
51
52
53
54
55
56
57
58
59
60

Table 1. Comparison of SITAR models of height on age with and without log transformation. Deviances and residual standard deviations for the two cohorts under the four models, ranked by size for CHS, with the minima shown in bold italic font.

Model	Christ's Hospital		Turner Study	
	Deviance	Residual (cm)	Deviance	Residual (cm)
Height versus log age	<i>359,450</i>	<i>0.786</i>	3973.4	0.634
Height versus age	360,910	0.791	<i>3954.6</i>	<i>0.627</i>
Log height versus log age	361,150	0.792*	4057.8	0.660*
Log height versus age	362,810	0.797*	4039.8	0.653*

* RSD obtained by multiplying by the geometric mean of height

Table 2. Christ's Hospital School data: summary statistics of SITAR pubertal growth parameter random effects for 3245 subjects and 129 508 measurements.

	SD	Correlations	
Size (cm)	6.1	Size	Tempo
Tempo	0.068	0.33	
Velocity	0.15	0.36	0.28
Residual (cm)	0.79		

Table 3. Turner Study data: summary statistics of SITAR pubertal growth parameter random effects for 105 subjects and 1321 measurements.

	SD	Correlations	
Size (cm)	5.9	Size	Tempo
Tempo (years)	1.04	0.29	
Velocity	0.23	0.28	-0.46
Residual (cm)	0.63		

1
2
3
4
5
6
7
8
9
10
11
12
13
14
15
16
17
18
19
20
21
22
23
24
25
26
27
28
29
30
31
32
33
34
35
36
37
38
39
40
41
42
43
44
45
46
47

Table 4. Christ’s Hospital School data: summary statistics and correlations of age at peak height velocity (APHV) and clinic measurements in later life⁹ with SITAR pubertal growth parameter random effects.

	<i>N</i>	Mean	SD	Size	Tempo	Velocity	APHV	Age	Height
APHV (years)	1485	14.3	1.6	0.18	0.83	0.06	1		
Age (years)	1028	63.3	6.7	-0.02	0.20	0.00	0.21	1	
Height (cm)	1022	178.2	6.4	0.86	0.15	0.34	0.05	-0.15	1
IGF-1 (ng/ml)	1024	125	42	-0.02	-0.12	-0.03	-0.13	-0.22	0.03

Table 5. Christ's Hospital School data: multiple regression of height (cm) in later life on SITAR random effects, adjusted for age of measurement.

	Standardised regression coefficient	Standard error	t	95% Confidence interval
(Intercept)	178.2	0.10	1860	178.0 to 178.4
Size	5.5	0.10	53.1	5.3 to 5.7
Tempo	-0.59	0.10	-5.7	-0.79 to -0.39
Velocity	0.54	0.10	5.3	0.34 to 0.74

Residual SD 3.0 cm, R^2 0.77

For Review Only

1
2
3
4
5
6
7
8
9
10
11
12
13
14
15
16
17
18
19
20
21
22
23
24
25
26
27
28
29
30
31
32
33
34
35
36
37
38
39
40
41
42
43
44
45
46
47
48
49
50
51
52
53
54
55
56
57
58
59
60

Legends to figures

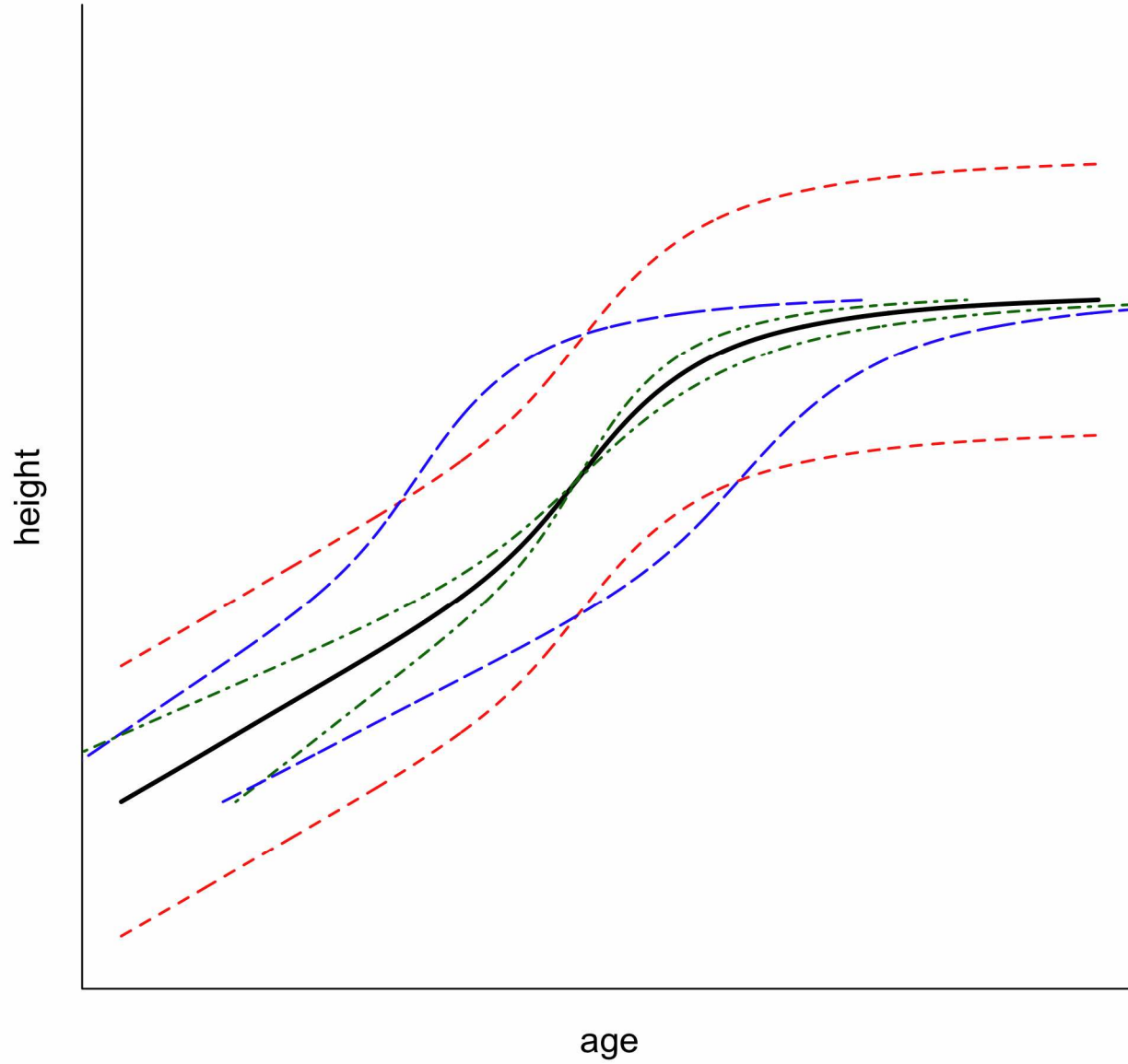
1. Illustration of the SITAR model for height in puberty. The solid line is the mean growth curve; the short dashed lines indicate a vertical or height shift in the curve corresponding to size (α); the long dashed lines indicates a horizontal or age shift corresponding to tempo (β), and the dot-dashed lines represent a shrinking-stretching of the age scale reflecting velocity (γ). See text for details.
2. Christ's Hospital School data – 3245 height growth curves and 129 508 heights from 9-19 years.
3. The effect on Figure 2 of adjusting in turn for size α (shifting curves vertically, Figure 3a), tempo β (shifting curves horizontally, Figure 3b), velocity γ (shrinking-stretching age scales, Figure 3c), and extreme outliers (Figure 3d). See text for details.
4. Turner Study data – Left: 105 height growth curves and 1321 heights from 9-19 years as randomised (oxandrolone red solid lines, placebo blue dashed lines). Right: the same curves after SITAR adjustment. See text for details.
5. Turner Study. Comparison of the SITAR growth parameters by trial arm. Velocity is far greater for oxandrolone ($P = 10^{-8}$).
6. Turner Study. The mean growth curves for the two arms, indicating the greater velocity for oxandrolone.

References

1. Tanner JM. Foetus into man: physical growth from conception to maturity. London: Open Books; 1978.
2. de Stavola BL, Nitsch D, dos Santos Silva I, McCormack V, Hardy R, Mann V, et al. Statistical issues in life course epidemiology. *Am J Epidemiol* 2006;**163**:84-96.
3. Jentsch RM, Bayley N. A mathematical method for studying growth in children. *Human Biology* 1937;**9**:556-63.
4. Preece MA, Baines MJ. A new family of mathematical models describing the human growth curve. *Annals of Human Biology* 1978;**5**:1-24.
5. Ledford AW, Cole TJ. Mathematical models of growth in stature throughout childhood. *Ann Hum Biol* 1998;**25**:101-15.
6. Beath KJ. Infant growth modelling using a shape invariant model with random effects. *Stat Med* 2007;**26**:2547-64.
7. Cole TJ, Cortina Borja M, Sandhu J, Kelly FP, Pan H. Nonlinear growth generates age changes in the moments of the frequency distribution: the example of height in puberty. *Biostatistics* 2008;**9**:159-71.
8. Sandhu J, Ben-Shlomo Y, Cole TJ, Holly J, Davey Smith G. The impact of childhood body mass index on timing of puberty, adult stature and obesity: a follow-up study based on adolescent anthropometry recorded at Christ's Hospital (1936-1964). *Int J Obes* 2006;**30**:14-22.

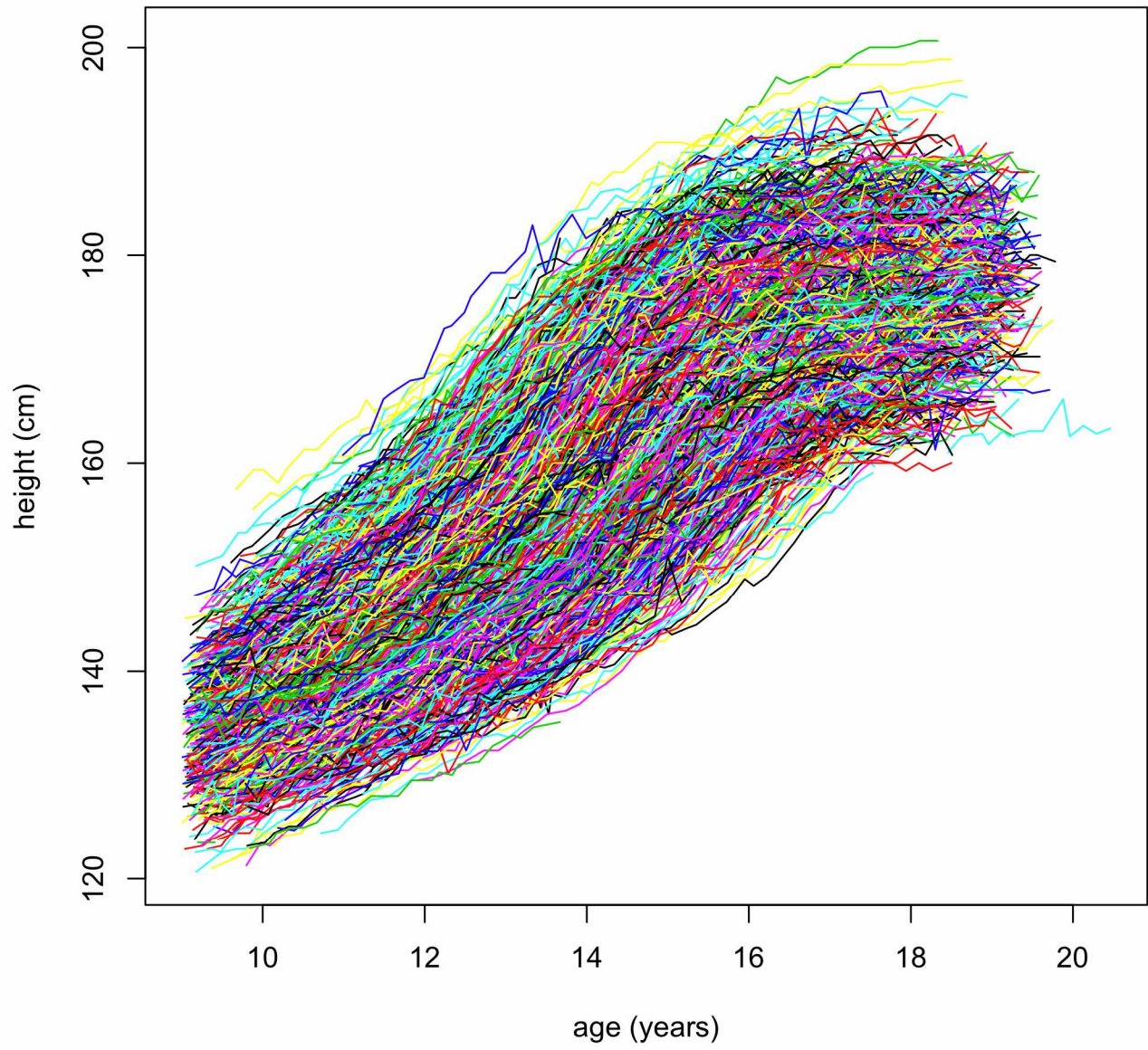
- 1
2
3
4 9. Sandhu J, Davey Smith G, Holly J, Cole TJ, Ben-Shlomo Y. Timing of
5
6 puberty determines serum insulin-like growth factor-1 in late adulthood. *J C E M*
7
8 2006;**91**:3150-7.
9
- 10
11 10. Gault EJ, Perry RJ, Casey S, Paterson WF, Cole TJ, Hindmarsh PC, et al.
12
13 Effect of oxandrolone and timing of pubertal induction on final height in Turner
14
15 Syndrome: randomised, double-blind, placebo-controlled trial. In preparation 2010.
16
17
- 18
19 11. Stützle W, Gasser T, Molinari L, Largo RH, Prader A, Huber PJ. Shape-
20
21 invariant modelling of human growth. *Annals of Human Biology* 1980;**7**.
22
23
- 24
25 12. Gasser T, Kneip A, Ziegler P, Largo R, Prader A. A method for determining
26
27 the dynamics and intensity of average growth. *Ann Hum Biol* 1990;**17**:459-74.
28
29
- 30
31 13. Pinheiro J, Bates D, DebRoy S, Sarkar D, R Core team. nlme: linear and
32
33 nonlinear mixed effects models. R package version 3.1-92. 2009.
34
35
- 36
37 14. R Development Core Team. R: a language and environment for statistical
38
39 computing. Vienna: R Foundation for Statistical Computing; 2009.
40
41
- 42
43 15. Tanner JM. Growth at adolescence. 2nd ed. Oxford: Blackwell; 1962.
44
45
46
47
48
49
50
51
52
53
54
55
56
57
58
59
60

Figure 1



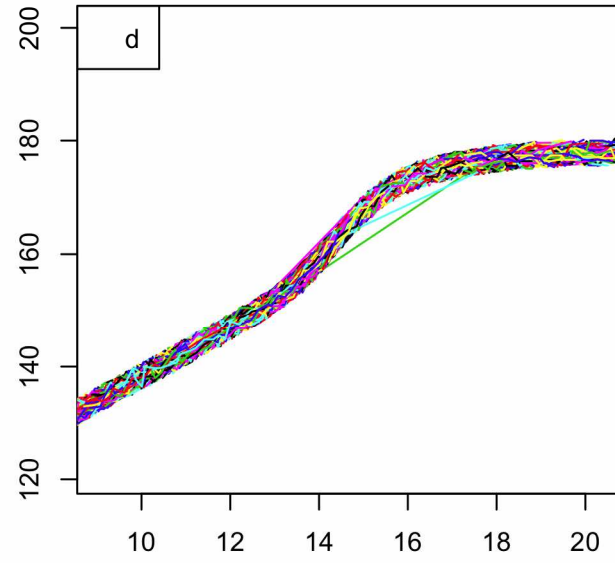
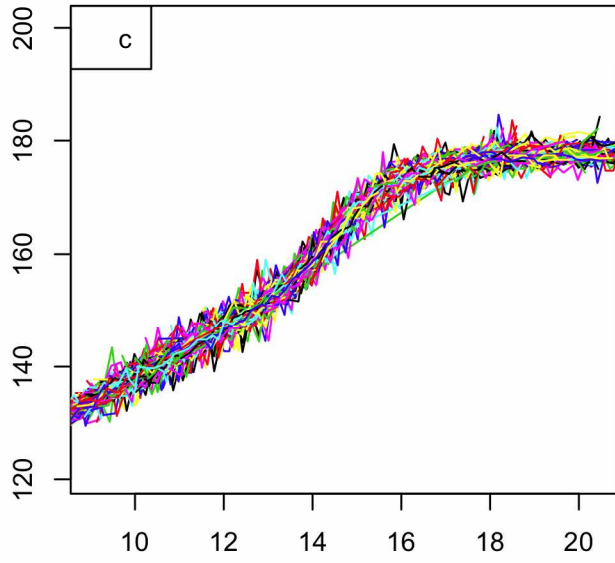
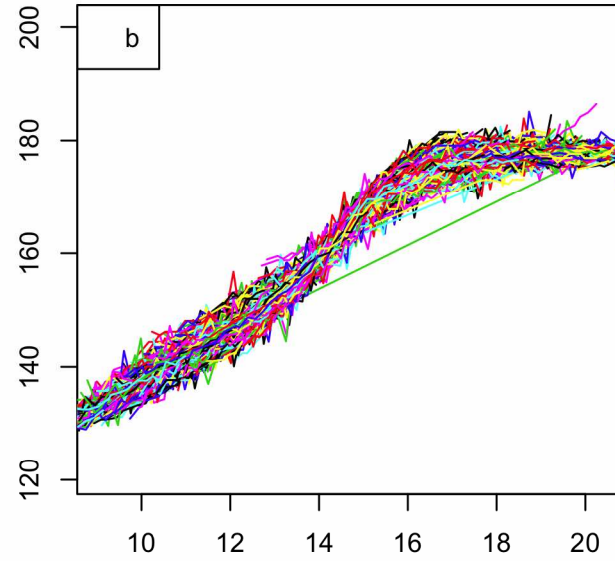
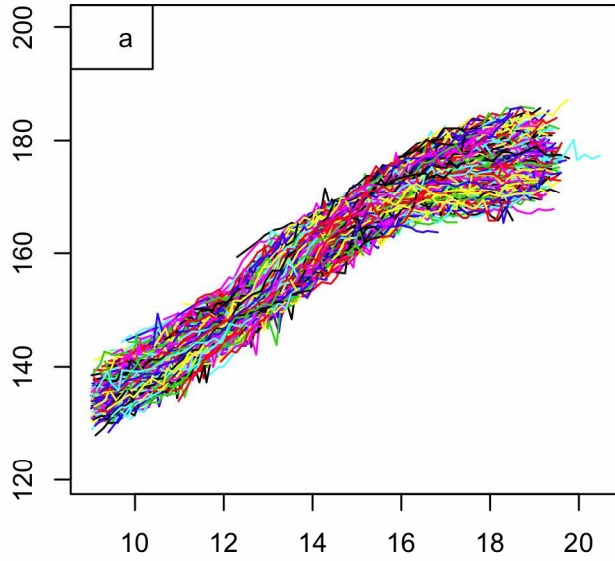
1
2
3
4
5
6
7
8
9
10
11
12
13
14
15
16
17
18
19
20
21
22
23
24
25
26
27
28
29
30
31
32
33
34
35
36
37
38
39
40
41
42
43
44
45
46
47
48
49

Figure 2



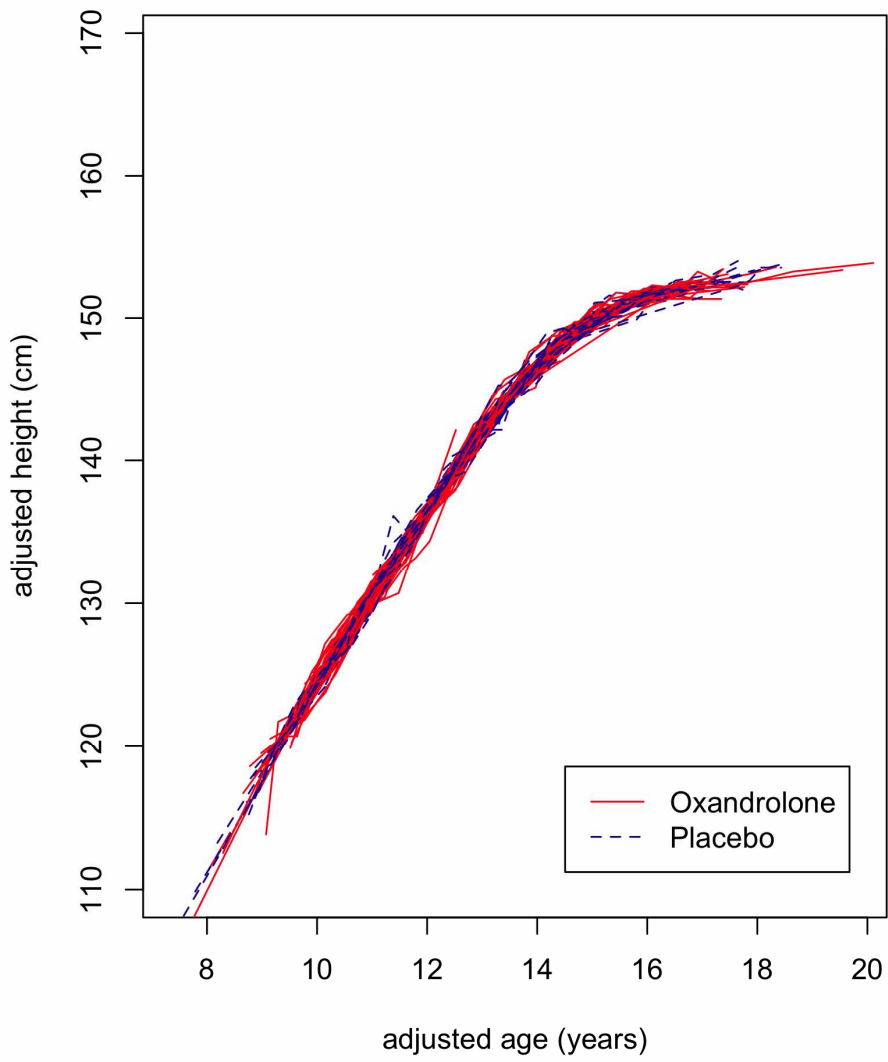
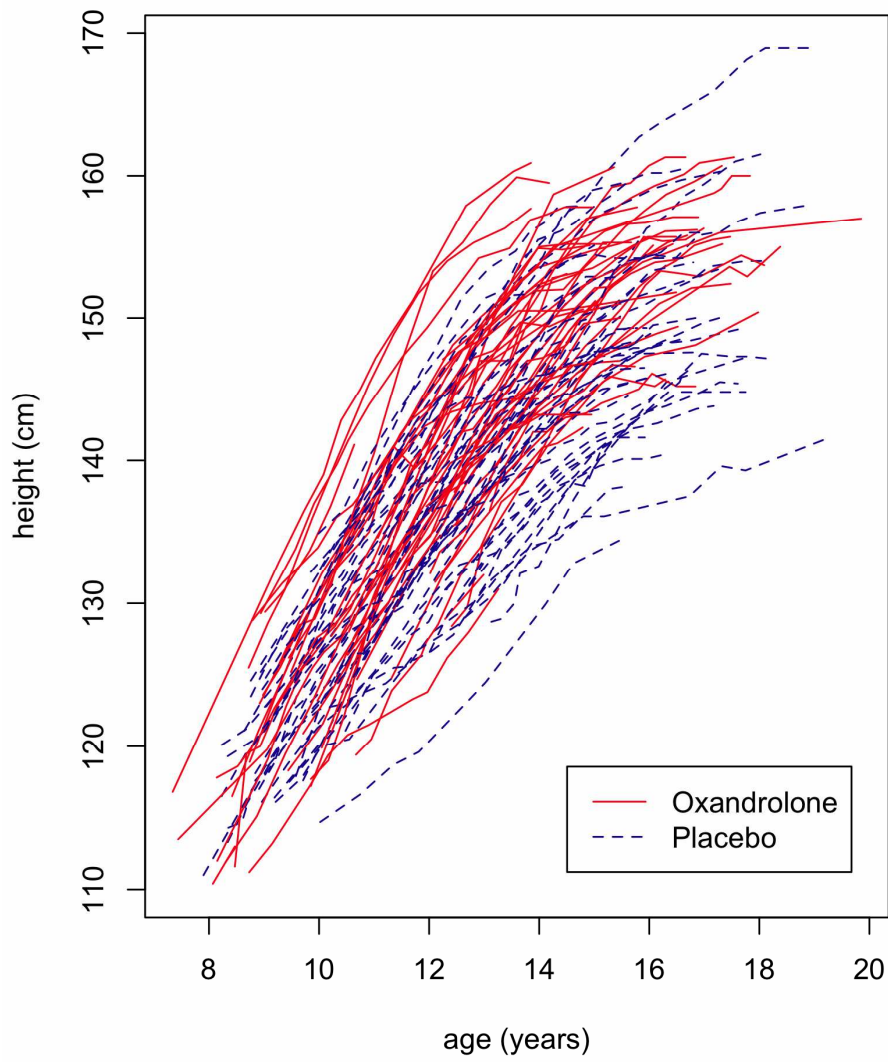
1
2
3
4
5
6
7
8
9
10
11
12
13
14
15
16
17
18
19
20
21
22
23
24
25
26
27
28
29
30
31
32
33
34
35
36
37
38
39
40
41
42
43
44
45
46
47
48
49

Figure 3



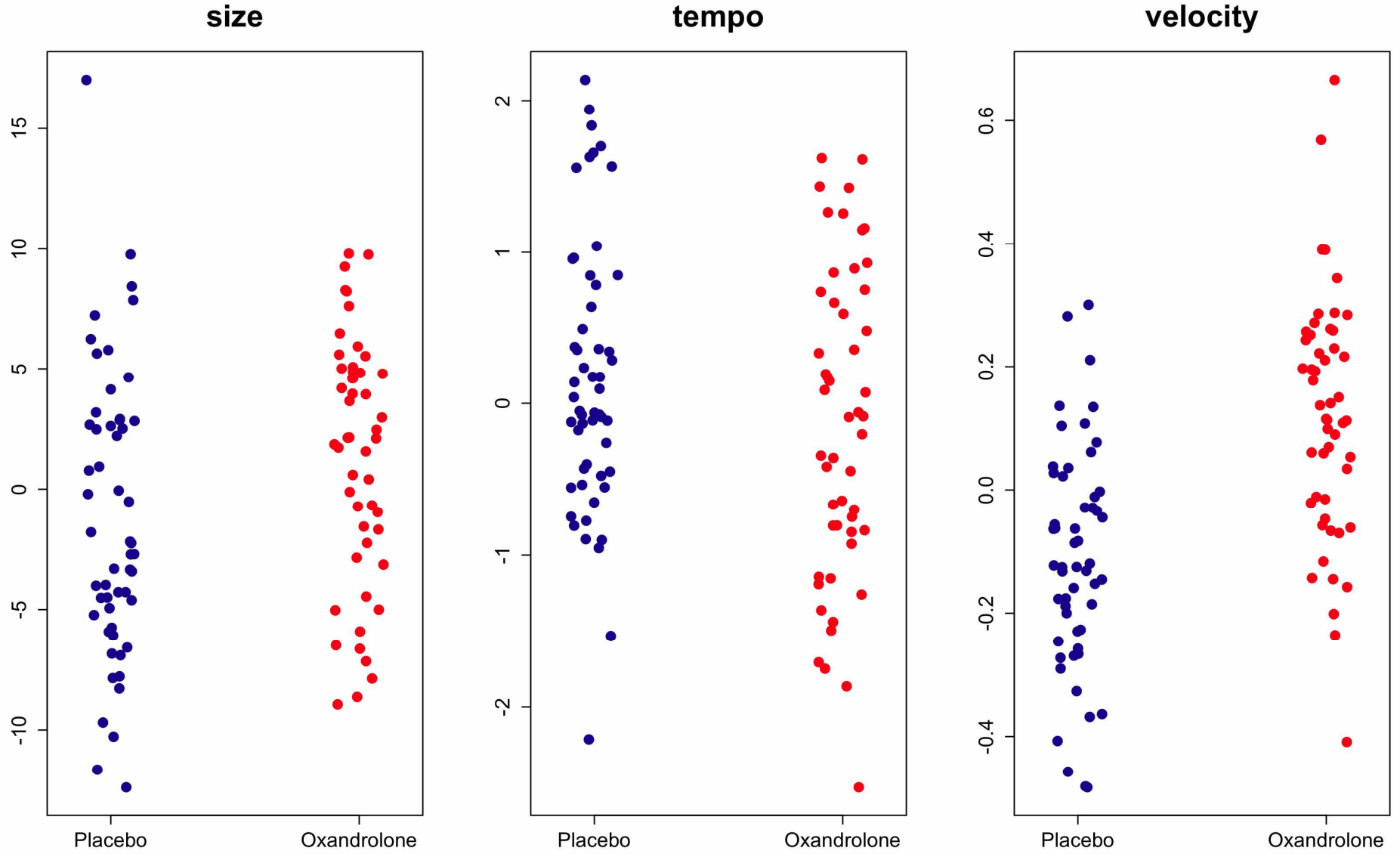
1
2
3
4
5
6
7
8
9
10
11
12
13
14
15
16
17
18
19
20
21
22
23
24
25
26
27
28
29
30
31
32
33
34
35
36
37
38
39
40
41
42
43
44
45
46
47
48
49

Figure 4



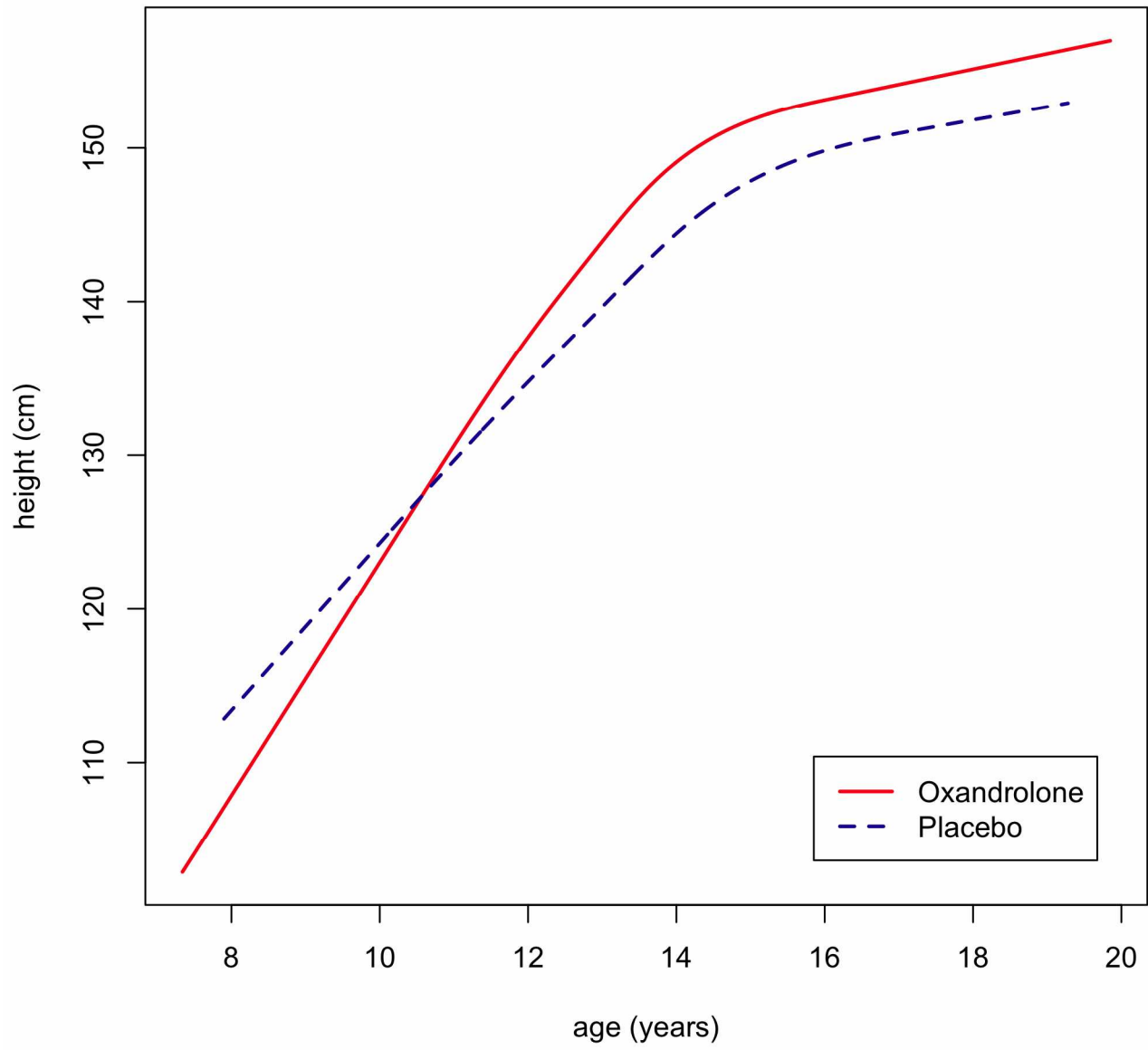
1
2
3
4
5
6
7
8
9
10
11
12
13
14
15
16
17
18
19
20
21
22
23
24
25
26
27
28
29
30
31
32
33
34
35
36
37
38
39
40
41
42
43
44
45
46
47
48
49

Figure 5



1
2
3
4
5
6
7
8
9
10
11
12
13
14
15
16
17
18
19
20
21
22
23
24
25
26
27
28
29
30
31
32
33
34
35
36
37
38
39
40
41
42
43
44
45
46
47
48
49

Figure 6



1
2
3
4
5
6
7
8
9
10
11
12
13
14
15
16
17
18
19
20
21
22
23
24
25
26
27
28
29
30
31
32
33
34
35
36
37
38
39
40
41
42
43
44
45
46
47
48
49