



HAL
open science

Increased responsiveness to JNK1/2 mediates the enhanced HO-induced stimulation of Cl/HCO exchanger activity in immortalized renal proximal tubular epithelial cells from the SHR

S. Simão, P. Gomes, P.A. Jose, P. Soares-Da-Silva

► To cite this version:

S. Simão, P. Gomes, P.A. Jose, P. Soares-Da-Silva. Increased responsiveness to JNK1/2 mediates the enhanced HO-induced stimulation of Cl/HCO exchanger activity in immortalized renal proximal tubular epithelial cells from the SHR. *Biochemical Pharmacology*, 2010, 80 (6), pp.913. <10.1016/j.bcp.2010.05.013>. <hal-00608937>

HAL Id: hal-00608937

<https://hal.science/hal-00608937v1>

Submitted on 16 Jul 2011

HAL is a multi-disciplinary open access archive for the deposit and dissemination of scientific research documents, whether they are published or not. The documents may come from teaching and research institutions in France or abroad, or from public or private research centers.

L'archive ouverte pluridisciplinaire HAL, est destinée au dépôt et à la diffusion de documents scientifiques de niveau recherche, publiés ou non, émanant des établissements d'enseignement et de recherche français ou étrangers, des laboratoires publics ou privés.



HAL Authorization

Accepted Manuscript

Title: Increased responsiveness to JNK1/2 mediates the enhanced H₂O₂-induced stimulation of Cl⁻/HCO₃⁻ exchanger activity in immortalized renal proximal tubular epithelial cells from the SHR

Authors: S. Simão, P. Gomes, P.A. Jose, P. Soares-da-Silva

PII: S0006-2952(10)00352-7
DOI: doi:10.1016/j.bcp.2010.05.013
Reference: BCP 10568

To appear in: *BCP*

Received date: 24-3-2010
Revised date: 12-5-2010
Accepted date: 12-5-2010

Please cite this article as: Simão S, Gomes P, Jose PA, Soares-da-Silva P, Increased responsiveness to JNK1/2 mediates the enhanced H₂O₂-induced stimulation of Cl⁻/HCO₃⁻ exchanger activity in immortalized renal proximal tubular epithelial cells from the SHR, *Biochemical Pharmacology* (2008), doi:10.1016/j.bcp.2010.05.013

This is a PDF file of an unedited manuscript that has been accepted for publication. As a service to our customers we are providing this early version of the manuscript. The manuscript will undergo copyediting, typesetting, and review of the resulting proof before it is published in its final form. Please note that during the production process errors may be discovered which could affect the content, and all legal disclaimers that apply to the journal pertain.



1
2
3 Increased responsiveness to JNK1/2 mediates the enhanced H₂O₂-induced
4 stimulation of Cl⁻/HCO₃⁻ exchanger activity in immortalized renal proximal
5 tubular epithelial cells from the SHR
6
7
8
9
10
11
12
13
14
15

16 S. Simão^a, P. Gomes^{a*}, and P.A. Jose^b, P. Soares-da-Silva^a
17
18
19
20
21
22

23 ^a Institute of Pharmacology and Therapeutics, Faculty of Medicine, University of Porto,
24 4200-319 Porto, Portugal
25
26

27
28 ^b Center for Molecular Physiology Research, Children's National Medical Center, and
29 Department of Pediatrics, George Washington School of Medicine and Health Sciences,
30 Washington, DC, USA
31
32
33
34
35
36
37
38
39
40

41 ^{*} Current address: Department of Biochemistry, Faculty of Medicine, University of
42 Porto, 4200-319 Porto, Portugal
43
44
45
46
47
48

49 **Running title:** H₂O₂ and Cl⁻/HCO₃⁻ exchanger activity
50
51
52
53

54 Correspondence to: P. Soares-da-Silva, Institute of Pharmacology and Therapeutics,
55 Faculty of Medicine, University of Porto, 4200-319 Porto, Portugal, Telephone: 351-22-
56 5513642, FAX: 351-22-5513643, E-mail: psoaresdasilva@netcabo.pt
57
58
59
60
61
62
63
64
65

Abstract

We have previously demonstrated that exogenous H_2O_2 stimulates $\text{Cl}^-/\text{HCO}_3^-$ exchanger activity in immortalized renal proximal tubular epithelial (PTE) cells from both the Wistar-Kyoto (WKY) rat and the spontaneously hypertensive rat (SHR), this effect being more pronounced in SHR cells. The aim of the present study was to examine the mechanism of H_2O_2 -induced stimulation of $\text{Cl}^-/\text{HCO}_3^-$ exchanger activity in WKY and SHR cells. It is now reported that the SHR PTE cells were endowed with an enhanced capacity to produce H_2O_2 , comparatively with WKY cells and this was accompanied by a decreased expression of SOD2, SOD3, and catalase in SHR PTE cells. The stimulatory effect of H_2O_2 on the exchanger activity was blocked by SP600125 (JNK inhibitor), but not by U0126 (MEK1/2 inhibitor) or SB203580 (p38 inhibitor) in both cell lines. Basal JNK1 and JNK2 protein expression was higher in SHR PTE cells than in WKY PTE cells. H_2O_2 had no effect on p-JNK1/2 in WKY PTE cells over time. By contrast, H_2O_2 treatment resulted in a rapid and sustained increase in JNK1/2 phosphorylation in SHR PTE cells, which was completely abolished by apocynin. Treatment of SHR PTE cells with apocynin significantly decreased the H_2O_2 -induced stimulation of $\text{Cl}^-/\text{HCO}_3^-$ exchanger activity. It is concluded that H_2O_2 -induced stimulation of $\text{Cl}^-/\text{HCO}_3^-$ exchanger activity is regulated by JNK1/2, particularly by JNK2, in SHR PTE cells. The imbalance between oxidant and antioxidant mechanisms in SHR PTE cells enhances the response of JNK1/2 to H_2O_2 , which contributes to their increased sensitivity to H_2O_2 .

Keywords: $\text{Cl}^-/\text{HCO}_3^-$ exchanger; Hypertension; Oxidative stress; H_2O_2 ; JNK

Abbreviations

1
2
3
4 BCECF-AM – acetoxymethyl ester of 2', 7'-bis (carboxyethyl)-5(6)-carboxyfluorescein

5
6
7 BSA – bovine serum albumin

8
9 DTT – dithiothreitol

10
11 EDTA – ethylenediamine tetraacetic acid

12
13 ERK – extracellular signal-regulated kinase

14
15 HEPES – 4-(2-hydroxyethyl)-1-piperazineethanesulfonic acid

16
17 JNK – c-Jun-NH₂-terminal kinase

18
19 MAPK – mitogen-activated protein kinase

20
21 NADPH – nicotinamide adenine dinucleotide phosphate, reduced form

22
23 NHE – Na⁺/H⁺ exchanger

24
25 Nox – NADPH oxidase

26
27 PBS – phosphate buffer saline

28
29 PKA – protein kinase A

30
31 PKC – protein kinase C

32
33 PT – proximal tubule

34
35 PTE – proximal tubular epithelial

36
37 ROS – reactive oxygen species

38
39 SDS-PAGE – sodium dodecyl sulfate polyacrylamide gel electrophoresis

40
41 SOD – superoxide dismutase

42
43 SHR – spontaneously hypertensive rat

44
45 WKY – Wistar Kyoto rat

1. Introduction

Essential hypertension is a complex and multifactorial pathology with a wide variety of underlying causes. One reason for the development and maintenance of this form of hypertension is the reduced capacity of the kidneys to excrete water and salts in appropriate relation to the intake [1]. In parallel with sodium, chloride is reabsorbed as the main accompanying anion and NaCl reabsorption regulation is critical in renal NaCl balance, which in turn controls extracellular volume and blood pressure [2]. About 50-70% of the filtered chloride is reabsorbed in the proximal tubule (PT) [3]. The main mechanism of NaCl reabsorption in the PT is via apical Na^+/H^+ exchanger subtype 3 (NHE3) that works in parallel with the $\text{Cl}^-/\text{HCO}_3^-$ exchanger that is essential for intracellular pH and cell volume regulation [4]. Our group recently demonstrated the presence of an apical $\text{Cl}^-/\text{HCO}_3^-$ exchanger, the slc26a6 protein, in immortalized renal proximal tubular epithelial (PTE) cells from the spontaneously hypertensive rat (SHR) and Wistar Kyoto (WKY) rat [5]. An increase activity of the $\text{Cl}^-/\text{HCO}_3^-$ exchanger in immortalized PTE cells from SHR when compared with WKY cells was also reported [5].

Oxidative stress is the result of either an increase in reactive oxygen species (ROS) production, a decrease in antioxidant defences, or both. ROS are naturally produced as a result of oxygen metabolism and include free radicals, like superoxide anion (O_2^-) and hydroxyl radical ($\cdot\text{OH}$), and nonradicals, namely H_2O_2 [6]. The association between oxidative stress and hypertension has been verified in several models of hypertension (reviewed in [6]), such as the SHR, which is a well characterized and extensively used genetic model for studying essential hypertension. However, the exact mechanism by which ROS mediate increases in blood pressure remains unclear. Animal studies have

1 shown that increased ROS production in the kidney decreased sodium excretion [7, 8].
2 In fact, it was observed that ROS stimulated NaCl absorption in the thick ascending
3 limb of the loop of Henle, by enhancing Na/K/2Cl co-transport and stimulating Na⁺/H⁺
4 exchanger present in this nephron segment [9-11]. The effect of ROS in renal proximal
5 tubule is not well established. Indeed, superoxide has been reported to decrease renal
6 proximal tubule transport by inhibiting NHE3 activity in the adult SHR [12, 13].
7 However, in the young (5 weeks), basal proximal tubular reabsorption is greater in the
8 SHR than in the WKY rat which was shown to be due to increased basal angiotensin II
9 effect [14], and NHE3 activity is increased especially at 6 weeks of age: expression may
10 or may not be increased [15-18]. These studies support our findings of increased Cl⁻
11 /HCO₃⁻ and NHE3 activity as the renal proximal tubule cells were obtained from 4-8
12 weeks old rats [19]. However, a direct comparison between the micropuncture studies
13 and our studies using immortalized renal proximal tubule cells may not be possible
14 because the cells were obtained from the S1 segment while the micropuncture data were
15 most likely obtained from the S2 segment.
16
17
18
19
20
21
22
23
24
25
26
27
28
29
30
31
32
33
34
35

36 Until recently, the effects of ROS on Cl⁻/HCO₃⁻ exchanger activity were not known.
37 We previously showed that SHR PTE cells have an enhanced sensitivity to H₂O₂-
38 induced stimulation of Cl⁻/HCO₃⁻ exchanger activity when compared with WKY PTE
39 cells [20] while previous studies on the effect of ROS on proximal tubule transport
40 involved superoxide [12, 13]. In an attempt to determine the mechanisms responsible
41 for differences in H₂O₂ sensitivity between renal PTE cells from hypertensive and
42 normotensive rats, the present study examined the role of the major mitogen-activated
43 protein kinase (MAPK) signalling pathways. MAPKs are serine/threonine-specific
44 protein kinases that respond to extracellular stimuli, e.g., oxidative stress, and are
45 known to regulate several cellular functions. MAPKs include the extracellular signal-
46
47
48
49
50
51
52
53
54
55
56
57
58
59
60
61
62
63
64
65

1 regulated kinases (ERK1/2), c-Jun-NH₂-terminal kinases (JNK), and p38 MAPK [21].
2 The antioxidant capacity of both WKY and SHR PTE cells was also investigated. It is
3 reported here that H₂O₂-induced stimulation of Cl⁻/HCO₃⁻ exchanger activity is
4 regulated by JNK1/2 in SHR PTE cells. Additionally, the elevated intracellular H₂O₂
5 levels caused by the imbalance between oxidant and antioxidant enzymes in SHR PTE
6 cells may be the underlying cause for the JNK1/2 responsiveness in this cell line.
7
8
9
10
11
12
13
14
15
16
17
18

19 **2. Material and methods**

20 *2.1 Cell culture*

21
22
23
24
25
26
27
28
29
30
31
32
33
34
35
36
37
38
39
40
41
42
43
44
45
46
47
48
49
50
51
52
53
54
55
56
57
58
59
60
61
62
63
64
65

Immortalized renal PTE cells were obtained from primary cultures from S1 segments of proximal tubules of 4- to 8 week-old WKY and SHRs [19]. These cell lines formed polarized monolayers with apical microvilli, tight junctional complexes and convolutions of the basolateral plasma membrane. Immortalized WKY and SHR cell lines express a proximal tubular phenotype and are morphologically and functionally similar to primary cultures [19]. Cells were maintained in a humidified atmosphere of 5% CO₂-95% air at 37°C. WKY and SHR PTE cells were grown in Dulbecco's modified Eagle's medium nutrient mixture F-12 Ham (Sigma Chemical Company, St. Louis, MO) supplemented with 100 U/ml penicillin G (Sigma), 0.25 µg/ml amphotericin B (Sigma), 100 µg/ml streptomycin (Sigma), 4 µg/ml dexamethasone (Sigma), 5 µg/ml transferrin (Sigma), 5 µg/ml insulin (Sigma), 5 ng/ml selenium (Sigma), 10 ng/ml epidermal growth factor (Sigma), 5% fetal bovine serum (Sigma) and 25 mM N-2-hydroxyethylpiperazine-N'-2-ethanesulfonic acid (HEPES; Sigma). For subculturing, the cells were dissociated with 0.10% trypsin-EDTA (Sigma), split 1:8 and cultured in Costar plates with 21-cm² growth areas (Costar, Badhoevedorp, The

1
2
3
4
5
6
7
8
9
10
11
12
13
14
15
16
17
18
19
20
21
22
23
24
25
26
27
28
29
30
31
32
33
34
35
36
37
38
39
40
41
42
43
44
45
46
47
48
49
50
51
52
53
54
55
56
57
58
59
60
61
62
63
64
65

Netherlands). For pH_i measurement experiments, cells were grown in 96 well plates (Costar) and for immunoblotting cells were grown in 6 well plates (Costar). The cell medium was changed every 2 days, and the cells reached confluence after 3-5 days of incubation. For approximately 2 hours prior to each experiment, the cells were maintained in fetal bovine serum-free medium. Experiments were performed 4 days after the initial seeding; each cm^2 contained about 50 μg of cell protein. In experiments with apocynin, cells were cultured until the day of experience in DMEM-F12 supplemented with 100 μM apocynin.

2.2 pH_i measurements

In intracellular pH (pH_i) measurement experiments, WKY and SHR PTE cells were grown in 96 well plates. pH_i was measured as previously described [5]. At day 4 after seeding SHR and WKY PTE cells were incubated at 37 °C for 30 min with 10 μM BCECF-AM. Cells were then washed twice with prewarmed modified Krebs-Hensleit buffer before initiation of the fluorescence recordings. The Krebs medium had the following composition (in mM): 115 NaCl, 25 NaHCO_3 , 5.4 KCl, 2.8 CaCl_2 , 1.2 MgSO_4 , 0.3 NaH_2PO_4 , 0.3 KH_2PO_4 , 10 HEPES, 5 glucose, pH 7.4 (adjusted with Tris base). Cells were placed in the sample compartment of a dual-scanning microplate spectrofluorometer (Spectramax Gemini XS, Molecular Devices, Sunnyvale), and fluorescence was measured every 17 s alternating between 440 and 490 nm excitation and 535 nm emission, with a cutoff filter of 530 nm. The ratio of intracellular BCECF fluorescence at 490 nm and 440 nm was converted to pH_i by comparison with values from an intracellular calibration curve using nigericin 10 μM in a high- K^+ solution (in mM: 15 NaCl, 130 KCl, 0.3 KH_2PO_4 , 0.3 NaH_2PO_4 , 5 glucose, 1.2 MgSO_4 , 2.8 CaCl_2 and 10 HEPES) with pH ranging from 6.6 to 7.8 [22].

2.3 Cl^-/HCO_3^- exchanger activity

1
2
3 Although there is no specific assay for Cl^-/HCO_3^- exchange-mediated activity,
4
5 several findings strongly suggest that pH_i recovery after removal of CO_2/HCO_3^- in the
6
7 absence of Na^+ reflects the activity of the Cl^-/HCO_3^- exchanger. Thus, the Na^+ -
8
9 independent HCO_3^- transport system activity was assayed as the initial rate of pH_i
10
11 recovery after an alkaline load (CO_2/HCO_3^- removal), in the absence of Na^+ , as
12
13 previously described [5]. Briefly, cells were loaded in serum-free medium with 10 μM
14
15 BCECF-AM, the membrane-permeant acetoxymethyl ester derivative of 2',7'-bis
16
17 (carboxyethyl)-5,6-carboxyfluorescein, for 30 min at 37°C in 5% CO_2 - 95% air
18
19 atmosphere. The cells were washed free of dye and loaded with Krebs-Hensleit solution
20
21 (25 mM $NaHCO_3$) for 25 min. Then, extracellular solution was replaced by a Krebs-
22
23 Hensleit $NaHCO_3$ -free solution for 10 min. In the $NaHCO_3$ -free bathing solution,
24
25 $NaHCO_3$ was replaced by an equimolar concentration of choline. The test compounds
26
27 were added to the extracellular fluid 40 min before starting the bicarbonate-dependent
28
29 pH_i recovery. Cells were placed in the sample compartment of a dual-scanning
30
31 microplate spectrofluorometer and fluorescence monitored every 17 s alternating
32
33 between 440 and 490 nm excitation at 535 nm of emission, with a cutoff filter of 530
34
35 nm.
36
37
38
39
40
41
42
43
44

2.4 Immunoblotting

45
46
47 WKY and SHR PTE cells cultured to 90% of confluence were washed twice with
48
49 PBS and total cell protein extracted for phospho-JNK1/2, total-JNK1/2, SOD1, SOD2,
50
51 SOD3, catalase and β -tubulin detection. For MAPK detection, cells were lysed by brief
52
53 sonication in 2x SDS sample buffer (62.5 mM Tris-HCl, 2% w/v SDS, 10% glycerol, 50
54
55 mM DTT, 0.01% w/v bromophenol blue) supplemented with protease inhibitors
56
57 (aprotinin and leupeptin 2 $\mu g/ml$ each). Extracts were heated at 95 °C for 5 minutes,
58
59
60
61
62
63
64
65

1 cooled on ice and loaded (10 μ l) onto a 10% SDS-PAGE gel. For detection of the
2 remaining proteins, cells were lysed by brief sonication in lysis buffer with protease
3 inhibitors (150 mM NaCl, 50 mM Tris-HCl pH 7.4, 5 mM EDTA, 0.25% sodium
4 deoxycholate, 1 mM PMSF, 1% NP-40 (IGEPAL), 1 mM Na_3VO_4 , 1 mM NaF,
5 aprotinin and leupeptin 1 μ g mL^{-1} each) and incubated on ice for 30 min. After
6 centrifugation (16,000g, 30 min, 4°C), the supernatant was collected and protein
7 concentration determined using a protein assay kit (Bio-Rad Laboratories, Hercules,
8 CA) with bovine serum albumin as standard. Between 50 – 80 μ g of protein were mixed
9 in 2x SDS sample buffer and boiled for 5 min. Proteins were electrotransferred onto
10 nitrocellulose membranes and the transblot sheets were blocked with 5% of non-fat dry
11 milk in Tris-HCl 25 mM pH 7.5, NaCl 150 mM, during 1h. For MAPK proteins, the
12 transblot sheets were blocked with 5% of BSA (bovine serum albumin) in Tris-HCl 25
13 mM pH 7.5, NaCl 150 mM and 0.1% Tween 20. The membranes were incubated with
14 the appropriate primary antibody overnight at 4°C (phospho-JNK1/2 mouse monoclonal
15 antibody 1:1000, Santa Cruz Biotechnology, Santa Cruz, CA; total-JNK1/2 rabbit
16 polyclonal antibody 1:1000, Santa Cruz Biotechnology; SOD1 rabbit polyclonal
17 antibody 1:1000, Santa Cruz Biotechnology; SOD2 goat polyclonal antibody 1:100,
18 Santa Cruz Biotechnology; SOD3 goat polyclonal antibody 1:100, Santa Cruz
19 Biotechnology, catalase rabbit polyclonal antibody 1:2000, Calbiochem, Nottingham,
20 UK and β -tubulin polyclonal antibody 1:800, Santa Cruz Biotechnology). The
21 immunoblots were subsequently washed and incubated with a fluorescent-labeled goat
22 anti-rabbit (IRDyeTm 800, Rockland, Gilbertsville, PA), a goat anti-mouse (AlexaFluor
23 680, Molecular Probes, Paisley, UK) or a donkey anti-goat (IRDyeTm 800, Rockland)
24 secondary antibody, for 60 min at room temperature and protected from light. The
25
26
27
28
29
30
31
32
33
34
35
36
37
38
39
40
41
42
43
44
45
46
47
48
49
50
51
52
53
54
55
56
57
58
59
60
61
62
63
64
65

1 membranes were washed and imaged by scanning at both 700 nm and 800 nm, with an
2 Odyssey Infrared Imaging System (LI-COR Biosciences, Lincoln, NE).
3

4 5 6 2.5 Drugs

7
8 Anisomycin, apocynin, H₂O₂, SB203580, SP600125, U0126 were obtained from
9 Sigma Chemical Company (St. Louis, MO). Acetoxymethyl ester of 2',7'-
10 bis(carboxyethyl)-5(6)-carboxyfluorescein (BCECF-AM) and nigericin were obtained
11 from Molecular Probes.
12
13
14
15
16

17 18 19 2.6 Data analysis

20
21 Geometric means are given with 95% confidence limits and arithmetic means are
22 given with S.E.M. Statistical analysis was performed by one-way analysis of variance
23 (ANOVA) followed by the Newman-Keuls test for multiple comparisons. A P-value
24 less than 0.05 was assumed to denote a significant difference.
25
26
27
28
29
30

31 32 33 34 35 3. Results

36
37 Exogenous H₂O₂ (0.3 – 10 μM) was previously reported by our group to stimulate, in
38 a concentration-dependent manner, Cl⁻/HCO₃⁻ exchanger activity in both WKY and
39 SHR PTE cells [20]. In the present series of experiments H₂O₂ (40 min exposure; 10
40 μM) increased Cl⁻/HCO₃⁻ exchanger activity by 120% and 170% in WKY and SHR
41 PTE cells, respectively (**table 1**). As a first approach to examine mechanisms
42 responsible for the differences in sensitivity to H₂O₂-induced stimulation of Cl⁻/HCO₃⁻
43 exchanger activity between WKY and SHR PTE cells, we evaluated the antioxidant
44 capacity of both cell lines. **Figure 1** shows the expression of the SOD family and
45 catalase antioxidant enzymes. Although the expression of SOD1 was similar in SHR
46 and WKY PTE cells, the expressions of SOD2 and SOD3 were decreased by 70% to
47
48
49
50
51
52
53
54
55
56
57
58
59
60
61
62
63
64
65

1
2
3
4
5
6
7
8
9
10
11
12
13
14
15
16
17
18
19
20
21
22
23
24
25
26
27
28
29
30
31
32
33
34
35
36
37
38
39
40
41
42
43
44
45
46
47
48
49
50
51
52
53
54
55
56
57
58
59
60
61
62
63
64
65

80% in SHR PTE cells (**figure 1**). Also, the expression of catalase was significantly lower (50% reduction) in SHR PTE cells than in WKY PTE cells (**figure 1**).

To further elucidate the mechanisms involved in H₂O₂-induced stimulation of the exchanger activity in both cell lines, we next tested the effects of MAPK inhibitors. As shown in **figure 2**, the stimulatory effect of H₂O₂ (40 min exposure; 10 μM) on the Cl⁻/HCO₃⁻ exchanger activity in both WKY and SHR PTE cells was prevented by the JNK1/2 inhibitor (SP600125; 20 μM), but not by the MEK1/2 inhibitor (U0126; 10 μM) or the p38 inhibitor (SB203580; 10 μM). To clarify the involvement of JNK in the regulation of Cl⁻/HCO₃⁻ exchanger activity, the effect of anisomycin (40 min exposure; 0.1 μM), a potent JNK/SAPK and p38 activator, on Cl⁻/HCO₃⁻ exchanger activity was tested in the presence of JNK1/2 inhibitor (SP600125; 20 μM). As shown in **figure 3**, the stimulatory effect of anisomycin on the Cl⁻/HCO₃⁻ exchanger activity was similar in WKY and SHR PTE cells and prevented by the JNK1/2 inhibitor.

Stimulation of p-JNK1/2 was also evaluated after treating WKY and SHR PTE cells with anisomycin and H₂O₂. Basal p-JNK1 and p-JNK2 protein expression was higher in SHR PTE cells than in WKY PTE cells, though differences attained statistical significance for JNK2 only (**figure 4**). Anisomycin-activated p-JNK1/2 was significantly (P<0.05) lower in WKY than in SHR PTE cells (**figure 5**). In both cell lines, anisomycin-activated p-JNK2 was significantly higher than activation of p-JNK1 (**figure 5**). Because H₂O₂-induced stimulation of Cl⁻/HCO₃⁻ exchanger activity in WKY and SHR PTE cells was only prevented by the JNK1/2 inhibitor, we next evaluated the activation of this MAPK following H₂O₂ treatment (0, 5, 15, 30, 45 and 60 min exposure; 10 μM) (**figure 6**). H₂O₂ had no effect on JNK1/2 phosphorylation in WKY PTE cells (**figure 6**). By contrast, H₂O₂ treatment in SHR PTE cells resulted in a rapid and sustained increase in JNK1/2 phosphorylation. Maximal effect on JNK1/2

1 phosphorylation in SHR PTE cells was obtained within 30 min of H₂O₂ exposure
2 (figure 6). Treatment of SHR PTE cells with apocynin, a NADPH oxidase inhibitor
3
4 (100 μM, during the four days of culture) completely abolished the H₂O₂-induced
5
6 JNK1/2 phosphorylation (figure 6). Treatment of SHR PTE cells with apocynin (100
7
8 μM, during the four days of culture) significantly decreased the H₂O₂-induced
9
10 stimulation of Cl⁻/HCO₃⁻ exchanger activity in this cell line (figure 7).
11
12
13
14
15
16

17 4. Discussion

18
19 The present study was designed to determine mechanisms responsible for differences
20
21 between renal PTE cells from hypertensive and normotensive rats on their sensitivity to
22
23 H₂O₂-induced stimulation of Cl⁻/HCO₃⁻ exchanger activity, namely the involvement of
24
25 the major MAPK signalling pathways and the antioxidant capacity of these cells. It is
26
27 reported here that the enhanced H₂O₂-induced stimulation of Cl⁻/HCO₃⁻ exchanger
28
29 activity in SHR PTE cells is dependent on JNK1/2 activation. In addition, the elevated
30
31 intracellular H₂O₂ levels caused by an imbalance between oxidant and antioxidant
32
33 enzymes in SHR PTE cells may be the underlying cause for the JNK1/2 responsiveness
34
35 in this cell line.
36
37
38
39
40

41 It is well established that different levels of H₂O₂ can induce different responses
42
43 within a cell. We previously reported that exogenous H₂O₂ stimulated, in a
44
45 concentration-dependent manner, Cl⁻/HCO₃⁻ exchanger activity in both WKY and SHR
46
47 PTE cells, with SHR PTE cells more susceptible to this reactive oxygen specie [20]
48
49 which is line with observations on the role of ROS in the regulation of ion transport in
50
51 some cells [23, 24]. In fact, H₂O₂ has been demonstrated to stimulate the activity of
52
53 other transporters, namely NHE and Na/K/2Cl. NHE from Wistar [25] and Sprague-
54
55 Dawley rat ventricular myocytes [26] were stimulated after exposure of cells to
56
57
58
59
60
61
62
63
64
65

1 micromolar H₂O₂ concentrations. ROS also increased the activity of Na/K/2Cl and NHE
2 from the thick ascending limb of the loop of Henle [9-11] although the effect on renal
3 proximal tubule cells may vary depending on the age and possibly the location along the
4 proximal tubule [12-14, 16-18]. Although ROS are mainly implicated in causing cell
5 damage, recent studies suggest they also play a significant physiological role in
6 numerous aspects of intracellular signal transduction and regulation, acting as second
7 messengers [27-29], interacting with membrane-bound transport proteins [24].
8
9

10 The increased rate of H₂O₂ production previously reported for immortalized SHR
11 PTE cells [20] was accompanied by an increased expression of Nox2, as well as the
12 associated protein p22^{phox} [30]. The present study shows that expression of the main
13 antioxidant enzymes were markedly decreased in SHR PTE cells than in WKY PTE
14 cells. Taken together these results indicate that SHR PTE cells have an imbalance
15 between oxidant and antioxidant mechanisms, favouring the oxidants, which may
16 explain the increase in H₂O₂ levels observed in SHR PTE cells. Similar results were
17 previously obtained by other authors that reported increased oxidative stress in different
18 tissues from the SHR, namely renal cortices [31, 32] and rostral ventrolateral medulla
19 neurons [33].
20
21

22 Differences in the oxidative environment between the two cell lines may explain the
23 enhanced sensitivity of SHR PTE cells to H₂O₂-induced stimulation of Cl⁻/HCO₃⁻
24 exchanger activity. However, we also tested the role of the major MAPK, to better
25 elucidate the mechanism involved in this stimulation. Interestingly, only the JNK1/2
26 inhibitor (SP600125) prevented the stimulatory effect of H₂O₂ on the Cl⁻/HCO₃⁻
27 exchanger activity in WKY and SHR PTE cells. The Cl⁻/HCO₃⁻ exchanger was
28 previously shown to be an effector protein for PKA, PKC and p38 MAPK in both WKY
29 and SHR PTE cells [34]. In the present study, the involvement of JNK1/2 in the
30
31
32
33
34
35
36
37
38
39
40
41
42
43
44
45
46
47
48
49
50
51
52
53
54
55
56
57
58
59
60
61
62
63
64
65

1 regulation of $\text{Cl}^-/\text{HCO}_3^-$ exchanger activity in both cell lines was confirmed when
2 anisomycin (a JNK/SAPK and p38 activator) stimulated the exchanger activity and p-
3 JNK1/2 and these effects were prevented by the JNK1/2 inhibitor SP600125.
4
5 Additionally, treatment with H_2O_2 induced JNK1/2 phosphorylation in SHR PTE cells,
6
7 while in WKY PTE cells no effect was observed. It should be underscored that the
8
9 abundance of JNK2, but not that of JNK1, in SHR PTE cells was higher than in WKY
10
11 PTE cells. In addition, JNK2 phosphorylation by both anisomycin and H_2O_2 was higher
12
13 in SHR PTE cells than in WKY PTE cells. These, therefore, suggest that JNK2 is likely
14
15 the main MAPK promoting the enhanced H_2O_2 response in SHR PTE cells. Taken
16
17 together, these results suggest that JNK1/2, particularly JNK2, is involved in the
18
19 regulation of $\text{Cl}^-/\text{HCO}_3^-$ by H_2O_2 in SHR PTE cells. Recently, SP600125 has been found
20
21 to be a non-specific kinase inhibitor [35]. According to these authors, in addition to
22
23 JNK, at least more 13 protein kinases were inhibited with similar or greater potency by
24
25 SP600125. Therefore, the effect of SP600125 upon H_2O_2 -induced stimulation of Cl^-
26
27 $/\text{HCO}_3^-$ exchanger activity in WKY cells might be a non-specific effect of this
28
29 compound. It is suggested that, in WKY cells, JNK does not regulate $\text{Cl}^-/\text{HCO}_3^-$
30
31 exchanger activity after exposure to exogenous H_2O_2 ; the exogenous H_2O_2 -induced
32
33 stimulation of $\text{Cl}^-/\text{HCO}_3^-$ exchanger activity in WKY cells necessarily involves the
34
35 activation of other mechanisms. This data is in agreement with the fact that treatment
36
37 with exogenous H_2O_2 had no effect on JNK phosphorylation in WKY cells. The
38
39 involvement of other protein kinases in the regulation of exchangers by ROS has been
40
41 previously reported. H_2O_2 -induced stimulation of NHE in neonatal Wistar rat
42
43 ventricular myocytes is regulated by ERK1/2 [25] and the H_2O_2 -induced stimulation of
44
45 NHE in adult Sprague-Dawley rat ventricular myocytes involves both ERK1/2 and PKC
46
47 [26].
48
49
50
51
52
53
54
55
56
57
58
59
60
61
62
63
64
65

1
2
3
4
5
6
7
8
9
10
11
12
13
14
15
16
17
18
19
20
21
22
23
24
25
26
27
28
29
30
31
32
33
34
35
36
37
38
39
40
41
42
43
44
45
46
47
48
49
50
51
52

The results presented here suggest that intracellular H₂O₂ plays a crucial role in promoting JNK1/2 responsiveness in SHR PTE cells, since apocynin prevented H₂O₂-induced JNK1/2 activation in this cell line. JNKs, also known as stress-activated protein kinases (SAPKs), respond to extracellular stimuli, namely oxidative stress and its activation by H₂O₂ has been demonstrated in numerous cell lines [25, 36, 37]. Several cell types are known to produce small amounts of ROS following stimulation with hormones, growth factors and cytokines. For example, various studies showed that different antioxidants, including a NADPH oxidase inhibitor, were effective in preventing angiotensin II-induced JNK phosphorylation, suggesting the involvement of reactive oxygen species in MAPK activation [38, 39]. We previously showed that the increased intracellular H₂O₂ in SHR PTE cells was attenuated when cells were cultured in medium supplemented with apocynin (a NADPH oxidase inhibitor) while in WKY PTE cells no effect was observed [20]. In the present study, a significant reduction in H₂O₂-induced stimulation of Cl⁻/HCO₃⁻ exchanger activity in SHR PTE cells in the presence of apocynin was observed. This result suggests that intracellular H₂O₂ might amplify the effect of exogenous H₂O₂ on Cl⁻/HCO₃⁻ exchanger activity in SHR PTE cells. Comparable effects were recently observed for other proteins when SHR PTE cells were grown in the presence of apocynin. Intracellular H₂O₂ also amplified the response downstream of α₁-adrenoceptor activation [20], α₂-adrenoceptor activation [30], and angiotensin AT1 receptor activation [40] in SHR PTE cells. Increased production of H₂O₂ in SHR PTE cells also potentiated the response of aldosterone-induced NHE 1 activation in this cell line [41].

53
54
55
56
57
58
59
60
61
62
63
64
65

Slc26 transporters are regulated by post-translational changes and macromolecular complex formation. At present, we can not determine whether regulation of Cl⁻/HCO₃⁻

1
2
3
4
5
6
7
8
9
10
11
12
13
14
15
16
17
18
19
20
21
22
23
24
25
26
27
28
29
30
31
32
33
34
35
36
37
38
39
40
41
42
43
44
45
46
47
48
49
50
51
52
53
54
55
56
57
58
59
60
61
62
63
64
65

exchanger activity by JNK1/2 in SHR PTE cells is the result of a direct interaction between these two proteins or if JNK1/2 induces the activation of other molecules.

It is concluded that H₂O₂-induced stimulation of Cl⁻/HCO₃⁻ exchanger activity is dependent on JNK1/2 activation, particularly JNK2, in SHR PTE cells. The elevated intracellular H₂O₂ levels caused by the imbalance between oxidant and antioxidant mechanisms in SHR PTE cells may be the underlying cause for the JNK1/2 increased responsiveness in this cell line.

Supported by *Fundação para a Ciência e a Tecnologia, FEDER and Programa Comunitário de Apoio (PIC/IC/83204/2007)*.

References

- 1
2
3
4
5 [1] Guyton AC, Coleman TG, Cowley AV, Jr., Scheel KW, Manning RD, Jr.,
6 Norman RA, Jr. Arterial pressure regulation. Overriding dominance of the
7 kidneys in long-term regulation and in hypertension. *Am J Med* 1972;52:584-94.
- 8 [2] Zeng C, Sanada H, Watanabe H, Eisner GM, Felder RA, Jose PA. Functional
9 genomics of the dopaminergic system in hypertension. *Physiol Genomics*
10 2004;19:233-46.
- 11 [3] Aronson PS, Giebisch G. Mechanisms of chloride transport in the proximal
12 tubule. *Am J Physiol* 1997;273:F179-92.
- 13 [4] Petrovic S, Ma L, Wang Z, Soleimani M. Identification of an apical Cl⁻/HCO₃⁻
14 exchanger in rat kidney proximal tubule. *Am J Physiol Cell Physiol*
15 2003;285:C608-17.
- 16 [5] Pedrosa R, Jose PA, Soares-da-Silva P. Defective D1-like receptor-mediated
17 inhibition of the Cl⁻/HCO₃⁻ exchanger in immortalized SHR proximal tubular
18 epithelial cells. *Am J Physiol Renal Physiol* 2004;286:F1120-6.
- 19 [6] Paravicini TM, Touyz RM. NADPH oxidases, reactive oxygen species, and
20 hypertension: clinical implications and therapeutic possibilities. *Diabetes Care*
21 2008;31 Suppl 2:S170-80.
- 22 [7] Swei A, Lacy F, Delano FA, Parks DA, Schmid-Schonbein GW. A mechanism
23 of oxygen free radical production in the Dahl hypertensive rat. *Microcirculation*
24 1999;6:179-87.
- 25 [8] Zou AP, Li N, Cowley AW, Jr. Production and actions of superoxide in the renal
26 medulla. *Hypertension* 2001;37:547-53.
- 27 [9] Juncos R, Garvin JL. Superoxide enhances Na-K-2Cl cotransporter activity in
28 the thick ascending limb. *Am J Physiol Renal Physiol* 2005;288:F982-7.
- 29 [10] Ortiz PA, Garvin JL. Superoxide stimulates NaCl absorption by the thick
30 ascending limb. *Am J Physiol Renal Physiol* 2002;283:F957-62.
- 31 [11] Silva GB, Ortiz PA, Hong NJ, Garvin JL. Superoxide stimulates NaCl
32 absorption in the thick ascending limb via activation of protein kinase C.
33 *Hypertension* 2006;48:467-72.
- 34 [12] Panico C, Luo Z, Damiano S, Artigiano F, Gill P, Welch WJ. Renal proximal
35 tubular reabsorption is reduced in adult spontaneously hypertensive rats: roles of
36 superoxide and Na⁺/H⁺ exchanger 3. *Hypertension* 2009;54:1291-7.
- 37 [13] Wu XC, Johns EJ. Interactions between nitric oxide and superoxide on the
38 neural regulation of proximal fluid reabsorption in hypertensive rats. *Exp*
39 *Physiol* 2004;89:255-61.
- 40 [14] Thomas D, Harris PJ, Morgan TO. Age-related changes in angiotensin II-
41 stimulated proximal tubule fluid reabsorption in the spontaneously hypertensive
42 rat. *J Hypertens Suppl* 1988;6:S449-51.
- 43 [15] Ambuhl PM, Amemiya M, Danczkay M, Lotscher M, Kaissling B, Moe OW, et
44 al. Chronic metabolic acidosis increases NHE3 protein abundance in rat kidney.
45 *Am J Physiol* 1996;271:F917-25.
- 46 [16] Gesek FA, Schoolwerth AC. Hormone responses of proximal Na⁽⁺⁾-H⁺
47 exchanger in spontaneously hypertensive rats. *Am J Physiol* 1991;261:F526-36.
- 48 [17] LaPointe MS, Sodhi C, Sahai A, Battle D. Na⁺/H⁺ exchange activity and NHE-
49 3 expression in renal tubules from the spontaneously hypertensive rat. *Kidney*
50 *Int* 2002;62:157-65.
- 51
52
53
54
55
56
57
58
59
60
61
62
63
64
65

- 1 [18] Magyar CE, Zhang Y, Holstein-Rathlou NH, McDonough AA. Proximal tubule
2 Na transporter responses are the same during acute and chronic hypertension.
3 *Am J Physiol Renal Physiol* 2000;279:F358-69.
- 4 [19] Woost PG, Orosz DE, Jin W, Frisa PS, Jacobberger JW, Douglas JG, et al.
5 Immortalization and characterization of proximal tubule cells derived from
6 kidneys of spontaneously hypertensive and normotensive rats. *Kidney Int*
7 1996;50:125-34.
- 8 [20] Simao S, Fraga S, Jose PA, Soares-da-Silva P. Oxidative stress and alpha1-
9 adrenoceptor-mediated stimulation of the Cl⁻/HCO₃⁻ exchanger in immortalized
10 SHR proximal tubular epithelial cells. *Br J Pharmacol* 2008;153:1445-55.
- 11 [21] Pearson G, Robinson F, Beers Gibson T, Xu BE, Karandikar M, Berman K, et
12 al. Mitogen-activated protein (MAP) kinase pathways: regulation and
13 physiological functions. *Endocr Rev* 2001;22:153-83.
- 14 [22] Thomas JA, Buchsbaum RN, Zimniak A, Racker E. Intracellular pH
15 measurements in Ehrlich ascites tumor cells utilizing spectroscopic probes
16 generated in situ. *Biochemistry* 1979;18:2210-8.
- 17 [23] Kourie JI. Interaction of reactive oxygen species with ion transport mechanisms.
18 *Am J Physiol* 1998;275:C1-24.
- 19 [24] Matalon S, Hardiman KM, Jain L, Eaton DC, Kotlikoff M, Eu JP, et al.
20 Regulation of ion channel structure and function by reactive oxygen-nitrogen
21 species. *Am J Physiol Lung Cell Mol Physiol* 2003;285:L1184-9.
- 22 [25] Sabri A, Byron KL, Samarel AM, Bell J, Lucchesi PA. Hydrogen peroxide
23 activates mitogen-activated protein kinases and Na⁺-H⁺ exchange in neonatal
24 rat cardiac myocytes. *Circ Res* 1998;82:1053-62.
- 25 [26] Snabaitis AK, Hearse DJ, Avkiran M. Regulation of sarcolemmal Na⁽⁺⁾/H⁽⁺⁾
26 exchange by hydrogen peroxide in adult rat ventricular myocytes. *Cardiovasc*
27 *Res* 2002;53:470-80.
- 28 [27] Valko M, Leibfritz D, Moncol J, Cronin MT, Mazur M, Telser J. Free radicals
29 and antioxidants in normal physiological functions and human disease. *Int J*
30 *Biochem Cell Biol* 2007;39:44-84.
- 31 [28] Veal EA, Day AM, Morgan BA. Hydrogen peroxide sensing and signaling. *Mol*
32 *Cell* 2007;26:1-14.
- 33 [29] Giorgio M, Trinei M, Migliaccio E, Pelicci PG. Hydrogen peroxide: a metabolic
34 by-product or a common mediator of ageing signals? *Nat Rev Mol Cell Biol*
35 2007;8:722-8.
- 36 [30] Simao S, Fraga S, Jose PA, Soares-da-Silva P. Oxidative stress plays a
37 permissive role in alpha2-adrenoceptor-mediated events in immortalized SHR
38 proximal tubular epithelial cells. *Mol Cell Biochem* 2008;315:31-9.
- 39 [31] Adler S, Huang H. Oxidant stress in kidneys of spontaneously hypertensive rats
40 involves both oxidase overexpression and loss of extracellular superoxide
41 dismutase. *Am J Physiol Renal Physiol* 2004;287:F907-13.
- 42 [32] Biswas SK, Peixoto EB, Souza DS, de Faria JB. Hypertension increases pro-
43 oxidant generation and decreases antioxidant defense in the kidney in early
44 diabetes. *Am J Nephrol* 2008;28:133-42.
- 45 [33] Chan SH, Tai MH, Li CY, Chan JY. Reduction in molecular synthesis or
46 enzyme activity of superoxide dismutases and catalase contributes to oxidative
47 stress and neurogenic hypertension in spontaneously hypertensive rats. *Free*
48 *Radic Biol Med* 2006;40:2028-39.
- 49
50
51
52
53
54
55
56
57
58
59
60
61
62
63
64
65

- 1
2
3
4
5
6
7
8
9
10
11
12
13
14
15
16
17
18
19
20
21
22
23
24
25
26
27
28
29
30
31
32
33
34
35
36
37
38
39
40
41
42
43
44
45
46
47
48
49
50
51
52
53
54
55
56
57
58
59
60
61
62
63
64
65
- [34] Simao S, Pedrosa R, Hopfer U, Mount DB, Jose PA, Soares-da-Silva P. Short-term regulation of the Cl⁻/HCO₃⁻ exchanger in immortalized SHR proximal tubular epithelial cells. *Biochem Pharmacol* 2008;75:2224-33.
- [35] Bain J, McLauchlan H, Elliott M, Cohen P. The specificities of protein kinase inhibitors: an update. *Biochem J* 2003;371:199-204.
- [36] Guyton KZ, Liu Y, Gorospe M, Xu Q, Holbrook NJ. Activation of mitogen-activated protein kinase by H₂O₂. Role in cell survival following oxidant injury. *J Biol Chem* 1996;271:4138-42.
- [37] Hung CC, Ichimura T, Stevens JL, Bonventre JV. Protection of renal epithelial cells against oxidative injury by endoplasmic reticulum stress preconditioning is mediated by ERK1/2 activation. *J Biol Chem* 2003;278:29317-26.
- [38] Viedt C, Soto U, Krieger-Brauer HI, Fei J, Elsing C, Kubler W, et al. Differential activation of mitogen-activated protein kinases in smooth muscle cells by angiotensin II: involvement of p22phox and reactive oxygen species. *Arterioscler Thromb Vasc Biol* 2000;20:940-8.
- [39] Kyaw M, Yoshizumi M, Tsuchiya K, Kirima K, Tamaki T. Antioxidants inhibit JNK and p38 MAPK activation but not ERK 1/2 activation by angiotensin II in rat aortic smooth muscle cells. *Hypertens Res* 2001;24:251-61.
- [40] Pedrosa R, Villar VA, Pascua AM, Simao S, Hopfer U, Jose PA, et al. H₂O₂ stimulation of the Cl⁻/HCO₃⁻ exchanger by angiotensin II and angiotensin II type 1 receptor distribution in membrane microdomains. *Hypertension* 2008;51:1332-8.
- [41] Pinto V, Pinho MJ, Hopfer U, Jose PA, Soares-da-Silva P. Oxidative stress and the genomic regulation of aldosterone-stimulated NHE1 activity in SHR renal proximal tubular cells. *Mol Cell Biochem* 2008;310:191-201.

Figure Legends

1
2
3
4 **Figure 1.** Protein expression of SOD1, SOD2, SOD3 and catalase in WKY and SHR
5 PTE cells. Representative immunoblots are depicted on top of the bar graph. Columns
6 represent mean of 4 independent immunoblots; vertical lines indicate SEM. Values are
7 normalized to the level of β -tubulin expression in each condition and expressed as % of
8 WKY PTE cells. SOD1 ~ 20 kDa; SOD2 ~ 25 kDa; SOD3 ~ 30 kDa; catalase ~ 60 kDa;
9 β -tubulin ~ 55 kDa.
10
11
12
13
14
15
16
17
18
19
20

21 **Figure 2.** Effect of H_2O_2 (40 min exposure; 10 μM) on $\text{Cl}^-/\text{HCO}_3^-$ exchanger activity in
22 (A) WKY and (B) SHR PTE cells in the absence and presence of U0126 (10 μM),
23 SB203580 (10 μM) and SP600125 (20 μM). The absolute control values for $\text{Cl}^-/\text{HCO}_3^-$
24 exchanger activity in pH units/min were 0.1660 ± 0.01 (WKY cells) and 0.2322 ± 0.01
25 (SHR cells) and were significantly different from each other. Each column represents
26 the mean of 5-8 experiments per group; vertical lines indicate SEM. Significantly
27 different from corresponding control values (* $P < 0.05$) and values for H_2O_2 alone (#
28 $P < 0.05$).
29
30
31
32
33
34
35
36
37
38
39
40
41

42 **Figure 3.** Effect of anisomycin (40 min exposure; 0.1 μM) on $\text{Cl}^-/\text{HCO}_3^-$ exchanger
43 activity in (A) WKY and (B) SHR PTE cells in the absence and presence of SP600125
44 (20 μM). The absolute control values for $\text{Cl}^-/\text{HCO}_3^-$ exchanger activity in pH units/min
45 were 0.2121 ± 0.01 (WKY cells) and 0.2499 ± 0.02 (SHR cells) and were significantly
46 different from each other. Each column represents the mean of 3-8 experiments per
47 group; vertical lines indicate SEM. Significantly different from corresponding control
48 values (* $P < 0.05$) and values for anisomycin alone (# $P < 0.05$).
49
50
51
52
53
54
55
56
57
58
59
60
61
62
63
64
65

1
2
3
4
5
6
7
8
9
10
11
12
13
14
15
16
17
18
19
20
21
22
23
24
25
26
27
28
29
30
31
32
33
34
35
36
37
38
39
40
41
42
43
44
45
46
47
48
49
50
51
52
53
54
55
56
57
58
59
60
61
62
63
64
65

Figure 4. Basal protein expression of p-JNK1 and p-JNK2 in WKY and SHR PTE cells. Values are normalized to the level of t-JNK1 and t-JNK2 expression in each condition and expressed as % of WKY PTE cells. The graph represents the mean of 3 experiments per group; vertical lines indicate SEM. Significantly different from corresponding values in WKY PTE cells (* P<0.05).

Figure 5. Effect of anisomycin (40 min exposure; 0.1 μ M) on p-JNK1/2 expression in WKY and SHR PTE cells. Values are normalized to the level of t-JNK1/2 expression in each condition and expressed as % of control. Representative immunoblots are depicted on the top of the bar graph. Each graph represents the mean of 4 experiments per group; vertical lines indicate SEM. Significantly different from corresponding control values (* P<0.05) and corresponding values in WKY PTE cells (# P<0.05). Ct – control, Aniso – anisomycin. p- and t-JNK1/2 ~ 54/46 kDa.

Figure 6. Effect of H₂O₂ (10 μ M; 0, 5, 15, 30, 45, 60 min exposure) on p-JNK1/2 protein expression in WKY and SHR PTE cells, in the absence and presence of apocynin (100 μ M; during 4 days of culture). Each symbol represents the mean of 3 experiments per group; vertical lines indicate SEM. Values are normalized to the level of t-JNK1/2 expression in each condition and expressed as % of control. Significantly different from corresponding control values (* P<0.05).

Figure 7. Effect of H₂O₂ (10 μ M for 40 min) on Cl⁻/HCO₃⁻ exchanger activity in SHR PTE cells in the absence and presence of apocynin (100 μ M; during 4 days after seeding). The absolute control values for Cl⁻/HCO₃⁻ exchanger activity in pH units/min, in SHR cells were 0.2574 \pm 0.01 (vehicle) and 0.2663 \pm 0.01 (apocynin). Each column

represents the mean of 8-15 experiments per group; vertical lines indicate SEM.

Significantly different from corresponding control values (* $P < 0.05$) and values for

H_2O_2 alone (# $P < 0.05$).

Accepted Manuscript

1
2
3
4
5
6
7
8
9
10
11
12
13
14
15
16
17
18
19
20
21
22
23
24
25
26
27
28
29
30
31
32
33
34
35
36
37
38
39
40
41
42
43
44
45
46
47
48
49
50
51
52
53
54
55
56
57
58
59
60
61
62
63
64
65

Table 1. $\text{Cl}^-/\text{HCO}_3^-$ exchanger activity in WKY and SHR PTE cells in the absence and in the presence of H_2O_2 (40 min exposure; 10 μM).

Treatment	$\text{Cl}^-/\text{HCO}_3^-$ exchanger activity (% of control)	
	WKY	SHR
Control	100.00 \pm 8.99 (n=6)	100.00 \pm 6.95 (n=7)
H_2O_2	120.52 \pm 3.88 (n=12) *	170.57 \pm 8.76 (n=13) *#

The absolute control values for $\text{Cl}^-/\text{HCO}_3^-$ exchanger activity in pH units/min were 0.1725 \pm 0.02 (WKY cells) and 0.2432 \pm 0.01 (SHR cells) and were significantly different from each other. Values are means \pm SEM of 4-13 experiments per group. Significantly different from control values (* $P < 0.05$) and from WKY values (# $P < 0.05$).

Accepted Manuscript

Fig. 1

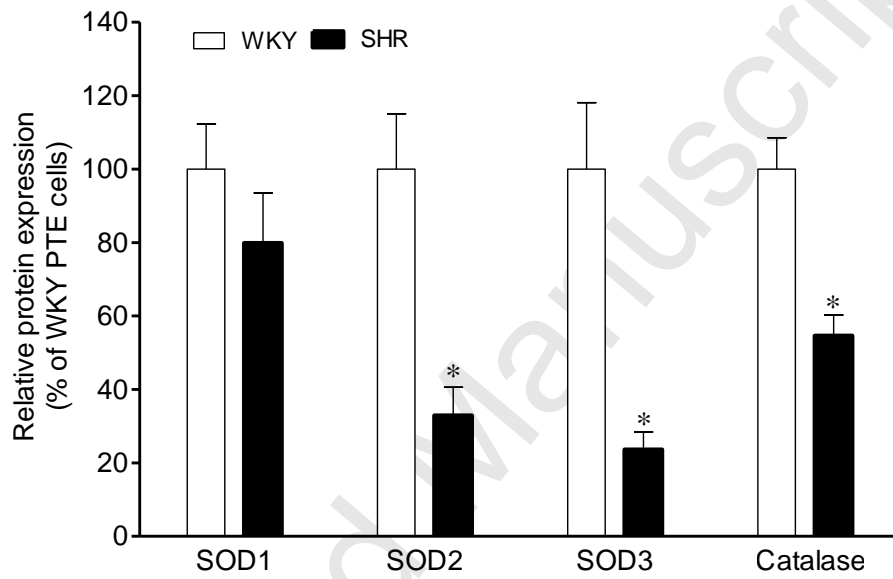
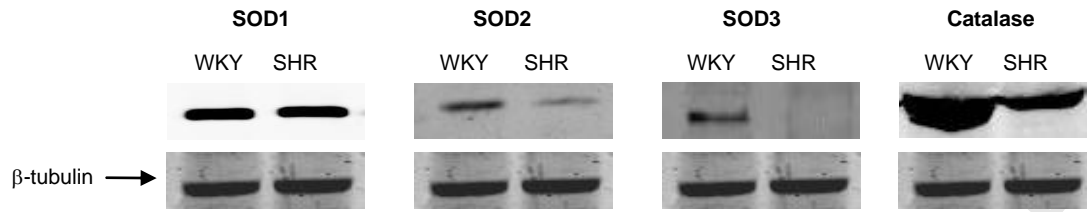


Fig. 2

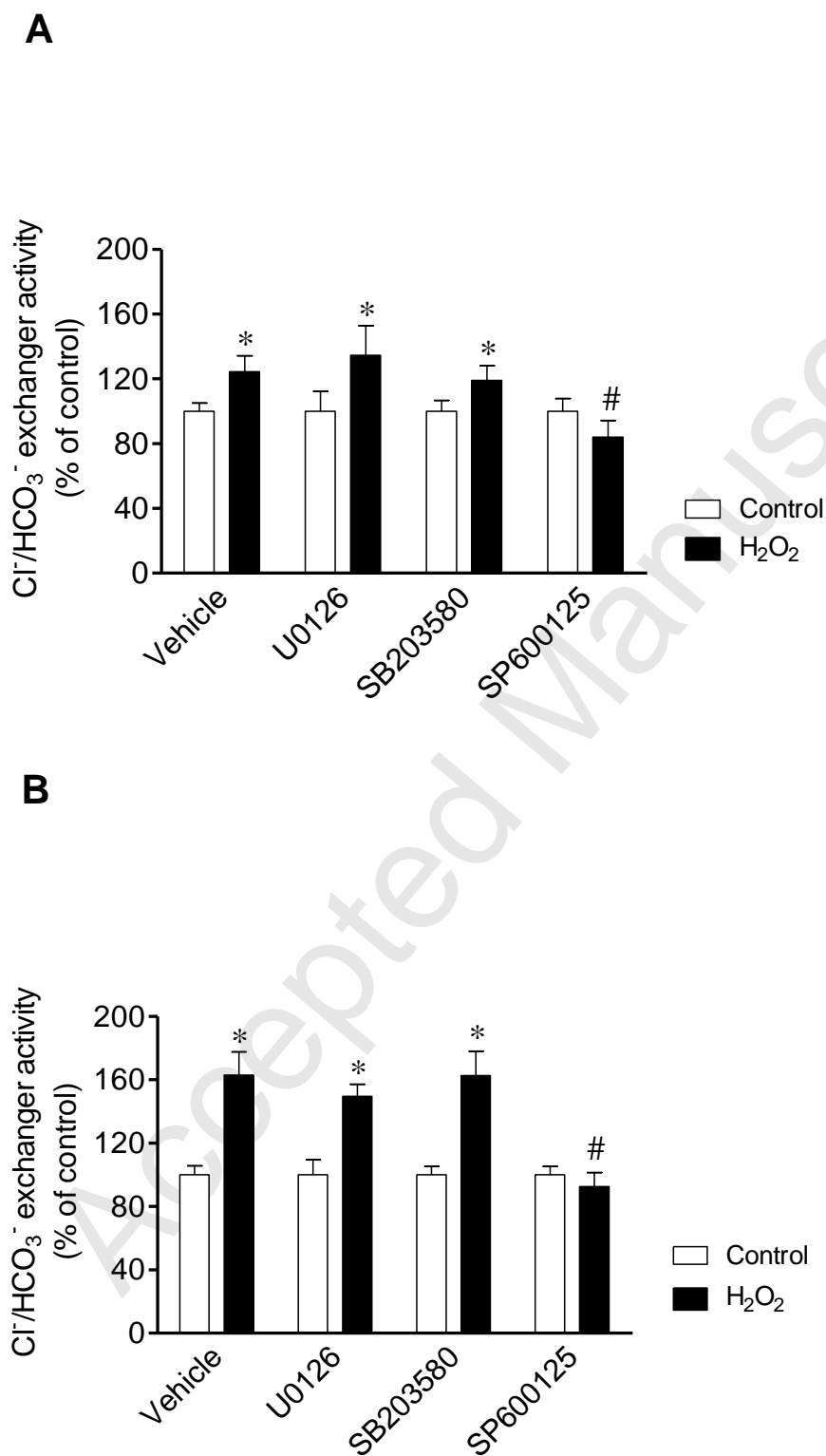


Fig. 3

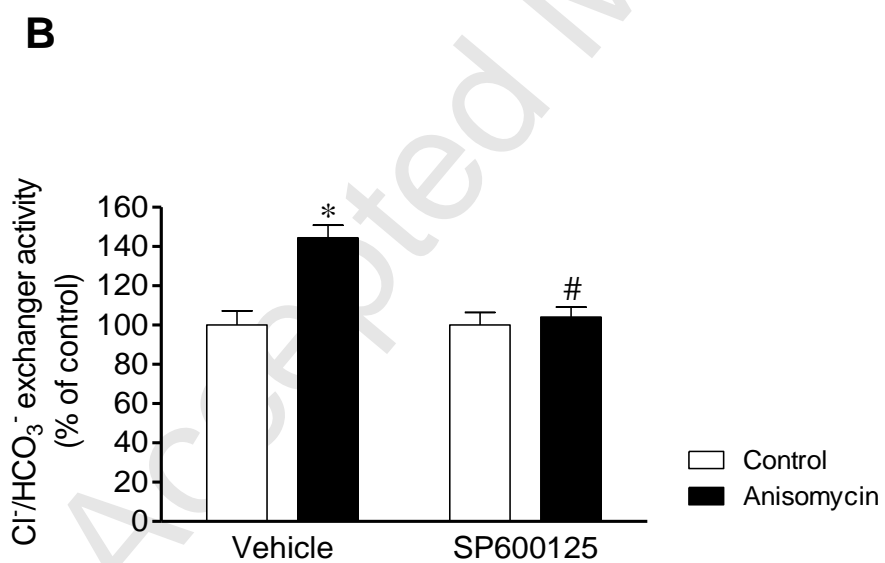
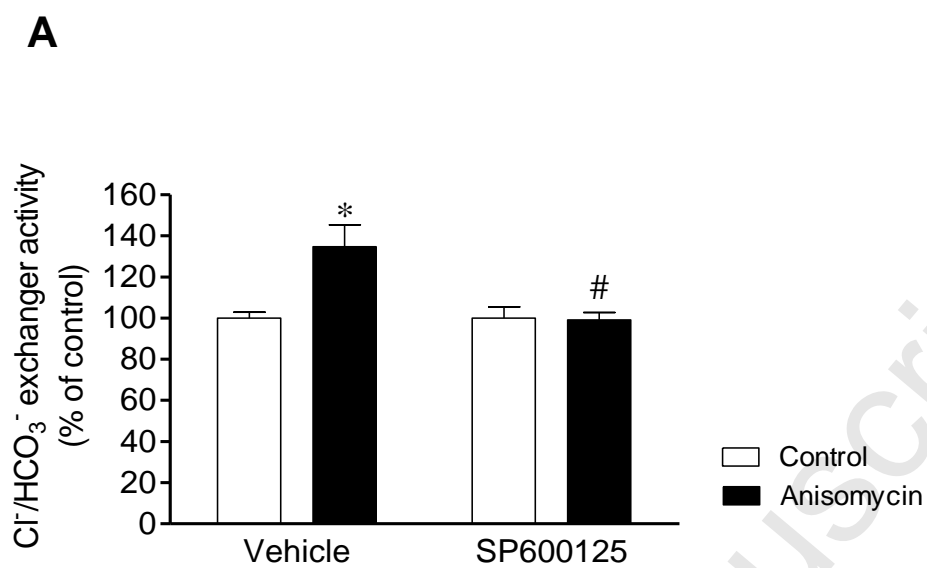


Fig. 4

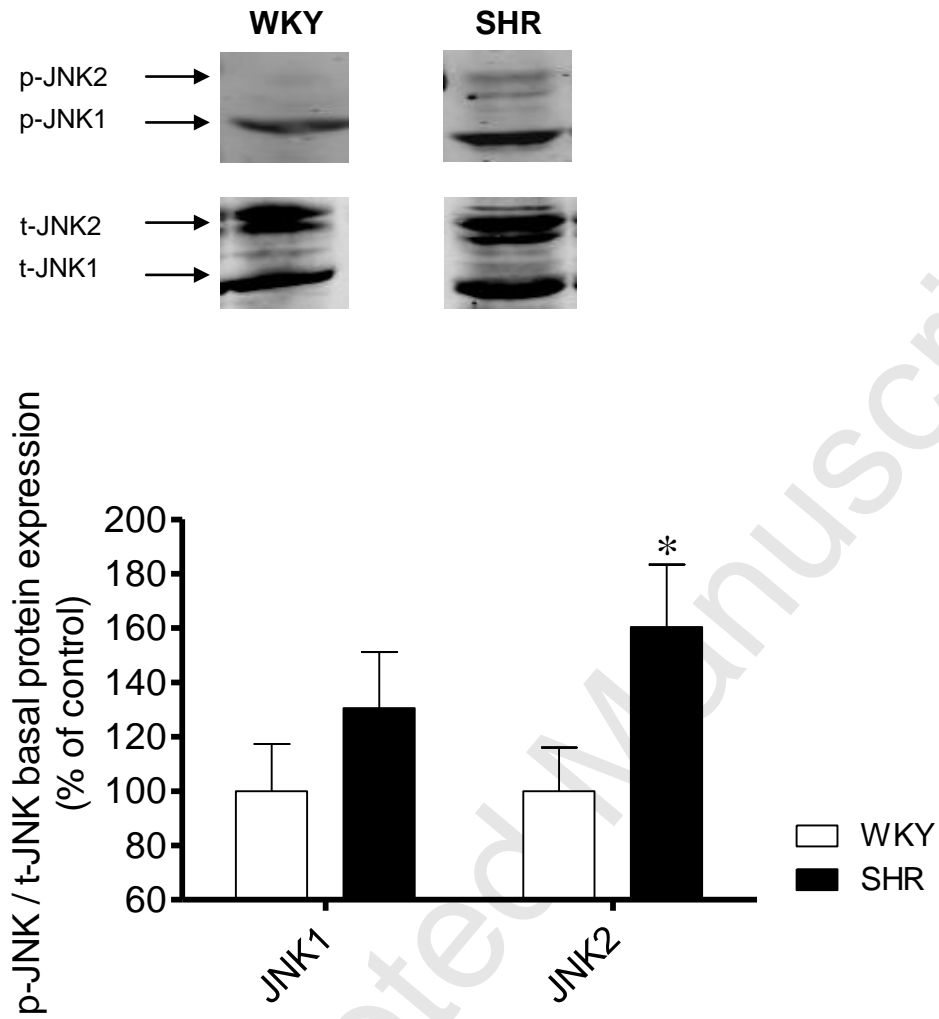


Fig. 5

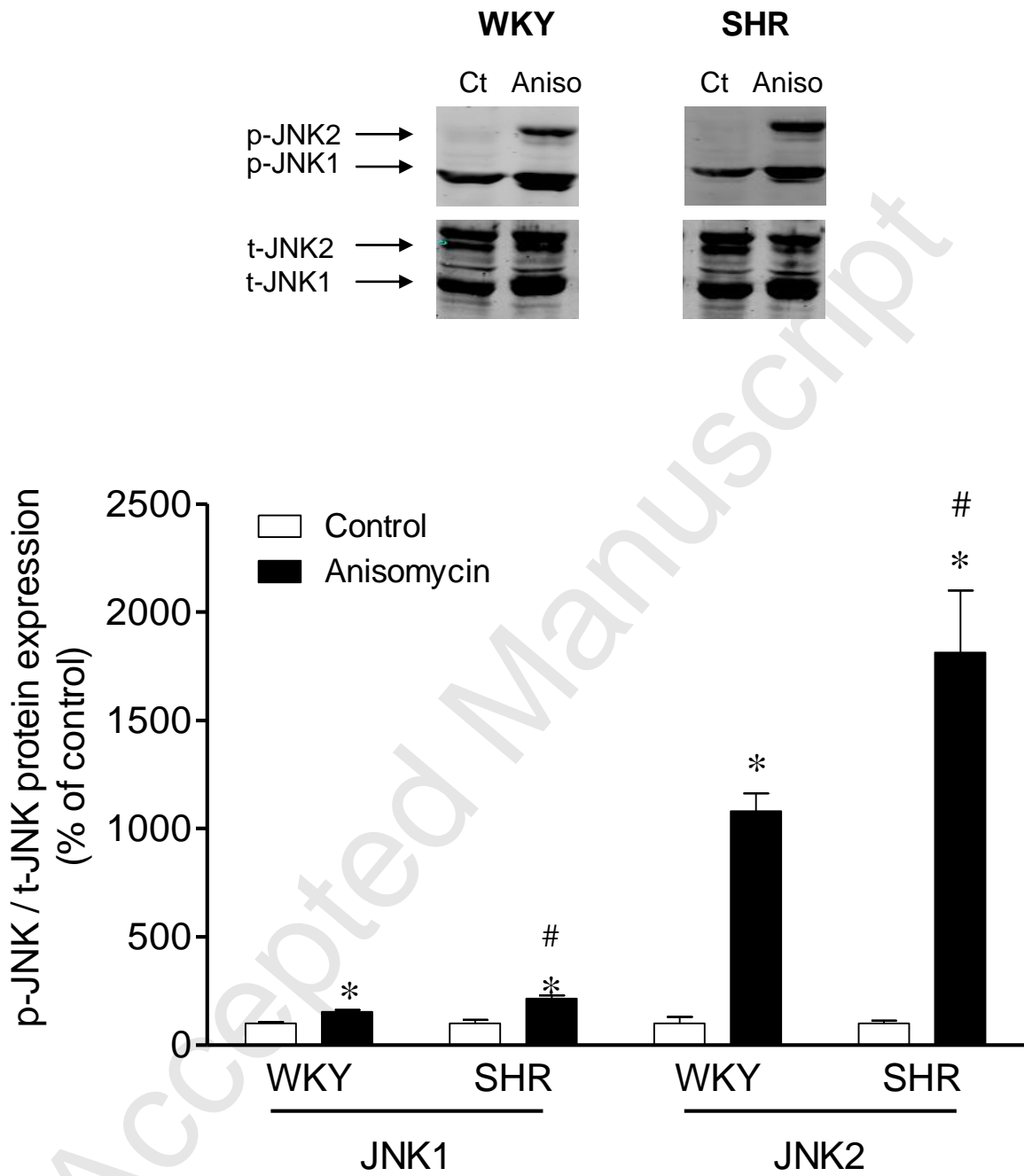


Fig. 6

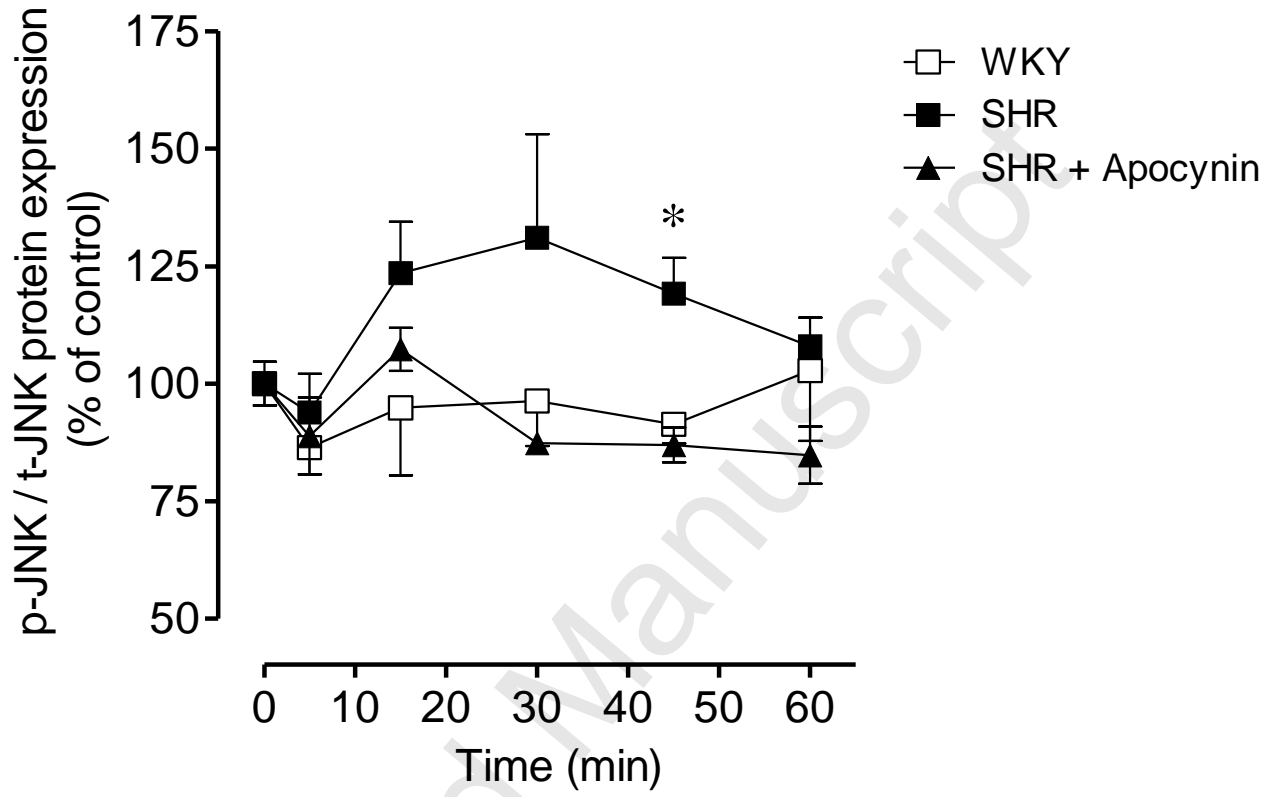
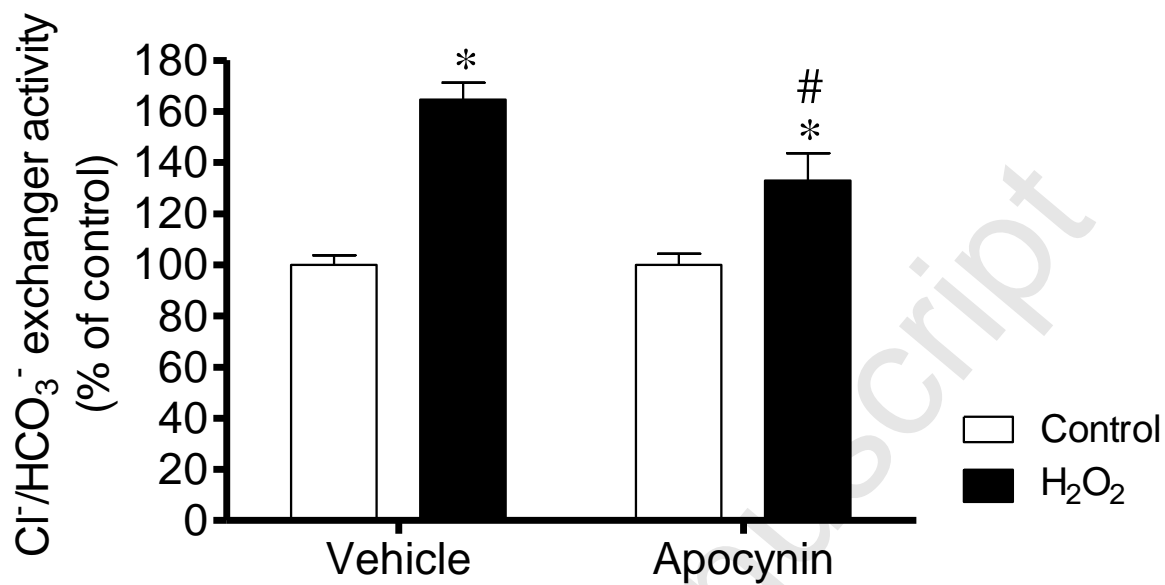


Fig. 7



Accepted Manuscript

H₂O₂-induced stimulation of Cl⁻/HCO₃⁻ exchanger activity is regulated by JNK1/2 in SHR cells. The imbalance between oxidant-antioxidant mechanisms in SHR cells enhances the response of JNK1/2 to H₂O₂, which contributes to their increased sensitivity.

