



HAL
open science

PGE inhibits Natural Killer and $\gamma\delta$ T cell cytotoxicity triggered by NKR and TCR through a cAMP-mediated PKA type I-dependent signaling

Ludovic Martinet, Christine Jean, Gilles Dietrich, Jean-Jacques Fournié,
Rémy Poupot

► **To cite this version:**

Ludovic Martinet, Christine Jean, Gilles Dietrich, Jean-Jacques Fournié, Rémy Poupot. PGE inhibits Natural Killer and $\gamma\delta$ T cell cytotoxicity triggered by NKR and TCR through a cAMP-mediated PKA type I-dependent signaling. *Biochemical Pharmacology*, 2010, 80 (6), pp.838. 10.1016/j.bcp.2010.05.002 . hal-00608915

HAL Id: hal-00608915

<https://hal.science/hal-00608915>

Submitted on 16 Jul 2011

HAL is a multi-disciplinary open access archive for the deposit and dissemination of scientific research documents, whether they are published or not. The documents may come from teaching and research institutions in France or abroad, or from public or private research centers.

L'archive ouverte pluridisciplinaire **HAL**, est destinée au dépôt et à la diffusion de documents scientifiques de niveau recherche, publiés ou non, émanant des établissements d'enseignement et de recherche français ou étrangers, des laboratoires publics ou privés.

Accepted Manuscript

Title: PGE₂ inhibits Natural Killer and $\gamma\delta$ T cell cytotoxicity triggered by NKR and TCR through a cAMP-mediated PKA type I-dependent signaling

Authors: Ludovic Martinet, Christine Jean, Gilles Dietrich, Jean-Jacques Fournié, Rémy Poupot



PII: S0006-2952(10)00341-2
DOI: doi:10.1016/j.bcp.2010.05.002
Reference: BCP 10557

To appear in: *BCP*

Received date: 16-3-2010
Revised date: 4-5-2010
Accepted date: 4-5-2010

Please cite this article as: Martinet L, PGE₂ inhibits Natural Killer and $\gamma\delta$ T cell cytotoxicity triggered by NKR and TCR through a cAMP-mediated PKA type I-dependent signaling, *Biochemical Pharmacology* (2008), doi:10.1016/j.bcp.2010.05.002

This is a PDF file of an unedited manuscript that has been accepted for publication. As a service to our customers we are providing this early version of the manuscript. The manuscript will undergo copyediting, typesetting, and review of the resulting proof before it is published in its final form. Please note that during the production process errors may be discovered which could affect the content, and all legal disclaimers that apply to the journal pertain.

1
2
3
4 PGE₂ inhibits Natural Killer and $\gamma\delta$ T cell cytotoxicity triggered by NKR
5
6
7
8 and TCR through a cAMP-mediated PKA type I-dependent signaling
9

10
11
12
13
14
15
16 Ludovic Martinet^a, Christine Jean^a, Gilles Dietrich^a, Jean-Jacques Fournié^a, Rémy
17
18
19 Poupot^{a,*}
20

21
22
23
24
25 ^a INSERM, U.563, Centre de Physiopathologie de Toulouse-Purpan, Toulouse, F-31300
26
27 France; Université Paul-Sabatier, Toulouse, F-31400 France

28
29 E-mail addresses : ludovic.martinet@ipbs.fr
30
31 christine.jean@inserm.fr
32
33 gilles.dietrich@inserm.fr
34
35 jean-jacques.fournie@inserm.fr
36
37 remy.poupot@inserm.fr
38
39
40

41
42
43
44 * Corresponding author. Pr. Rémy Poupot, INSERM 563 Centre de Physiopathologie de
45
46 Toulouse-Purpan, CHU Purpan, BP3028, 31024 Toulouse Cedex 3, FRANCE. Tel.: +33 5 6274
47
48 8368; fax: +33 5 6274 4558.
49

50
51 E-mail address: remy.poupot@inserm.fr
52
53
54
55
56
57
58
59
60
61
62

1
2
3
4 ABSTRACT

5
6 Natural Killer (NK) and unconventional $\gamma\delta$ T cells, by their ability to sense ligands induced by
7
8 oncogenic stress on cell surface and to kill tumor cells without a need for clonal expansion, show
9
10 a great therapeutic interest. They use numerous activating and inhibitory receptors which can
11
12 function with some independence to trigger or inhibit destruction of target cells. Previous reports
13
14 demonstrated that PGE₂ is able to suppress the destruction of some tumor cell lines by NK and $\gamma\delta$
15
16 T cells but it remained uncertain if PGE₂ interferes with the different activating receptors
17
18 governing the cytolytic responses of NK and $\gamma\delta$ T cells. In this report, using the model of specific
19
20 redirected lysis of the mouse Fc γ R⁺ cell line P815, we clearly demonstrate that the major NK
21
22 receptors (NKR): NKG2D, CD16 and Natural Cytotoxicity Receptors (NCR; NKp30, NKp44,
23
24 NKp46] and $\gamma\delta$ T cells receptors TCR V γ 9V δ 2, NKG2D and CD16 are all inhibited by PGE₂. As
25
26 is the case with $\gamma\delta$ T cells, we show that PGE₂ binds on E-prostanoid 2 (EP2) and EP4 receptors
27
28 on NK cells. Finally, we delineate that the signaling of the blockade by PGE₂ is mediated through
29
30 a cAMP-dependent activation of PKA type I which inhibits early signaling protein of cytotoxic
31
32 cells. In the discussion, we focused on how these data should impact particular approaches in the
33
34 treatment of cancer.
35
36
37
38
39
40
41
42
43
44
45

46 Keywords:

47 NK cells

48 $\gamma\delta$ T cells49 PGE₂

50 PKA type I

51 cytotoxicity receptors
52
53
54
55
56
57
58
59
60
61

1. Introduction

NK cells (NK) and the unconventional $\gamma\delta$ subset of T lymphocytes have the ability to respond early to oncogenic transformation without needing clonal expansion, to produce inflammatory mediators such as IFN- γ and TNF- α and to kill appropriate cellular targets. Due to these abilities, they actively participate in the immunosurveillance of tumors and are enrolled in cancer immunotherapies [1,2]. In contrast with $\alpha\beta$ T lymphocytes whose activation is controlled principally through TCR signaling, the activation of NK and $\gamma\delta$ T cells is controlled through the recognition - by their multiple activating and inhibitory receptors - of ligands on the cell surface of target cells [3]. Most of circulating $\gamma\delta$ T lymphocytes from humans and primates express the HLA-unrestricted TCR V γ 9V δ 2 which is specific for small non-peptide phosphorylated metabolites (so-called phosphoantigens, PAg) which are frequently up regulated in human tumor cells [4]. NK and $\gamma\delta$ T cells highly express NKG2D (a lectin-like type II transmembrane homodimer), a receptor allowing them to respond to ligands (MICA, MICB and ULBP 1-4) up-regulated during oncogenic transformation and stress [5–7]. CD16 (a Fc γ RIII receptor) expressed by NK and $\gamma\delta$ T cells plays an important role in Antibody Dependant Cell Cytotoxicity (ADCC) which is of particular clinical interest with the increasing number of anti-cancer therapies using monoclonal antibodies [8–10]. Finally, NK cells also express NCR (NKp30, NKp44 and NKp46) that are critically involved in tumor cell recognition [11]. In a marginal way, under particular conditions of activation, $\gamma\delta$ T cells also express NKp44 [12].

Despite the ability of immune cells to infiltrate and kill tumor cells, the spontaneous clearance of established tumors by endogenous immune mechanisms is rare and the different

1
2
3
4 cellular approaches of immunotherapy tested so far have obtained limited results. Indeed, tumor
5
6 cells and their microenvironment often produce numerous immunomodulatory molecules that can
7
8 negatively influence the functions of immune cells [13,14]. PGE₂ is a major inhibitory factor
9
10 produced by tumor cells or their surrounding microenvironment [15]. The rate limiting enzyme in
11
12 PGE₂ synthesis is cyclooxygenase-2 (COX2). It is over-expressed in many cancers leading to an
13
14 overproduction of PGE₂ often linked to an adverse clinical outcome, a high tumor grade and
15
16 metastatic dissemination [16 ,17].
17
18
19

20
21 The negative impact of tumor-derived PGE₂ on tumor immunity has been mainly explained
22
23 by its ability to inhibit directly the proliferation and effector functions of CD4⁺ and CD8⁺ T cells
24
25 [18,19] and to promote their differentiation in regulatory T cells [20]. PGE₂ has also been
26
27 involved in the inhibition of NK and $\gamma\delta$ T cell cytolytic functions [21–24]. Nevertheless, studies
28
29 that analyzed the regulation of NK and $\gamma\delta$ T cell functions by PGE₂ only focused on its ability to
30
31 regulate their cytotoxicity against target cells. But, this cytotoxicity reflects the integration of
32
33 multiple signals transduced by the different activating receptors expressed by NK and $\gamma\delta$ T cells.
34
35 In order to improve current immunotherapies, it is crucial to establish if PGE₂ can interfere with
36
37 the different activating receptors governing the cytolytic responses of NK and $\gamma\delta$ T cells. In this
38
39 study we demonstrate that PGE₂ inhibits the destruction of target cells by NK and $\gamma\delta$ T cells
40
41 activated either through TCR V γ 9V δ 2 (for $\gamma\delta$ T cells), NCR (for NK cells), CD16 or NKG2D
42
43 (for both) receptors. We also delineate the mechanism which mediates the inhibitory signal of
44
45 PGE₂.
46
47
48
49
50
51
52
53
54
55
56
57
58

59 **2. Material and methods**

60
61
62
63
64
65

2.1. Reagents

PGE₂ and Brefeldin A were obtained from Sigma-Aldrich (Saint-Louis, MO). Butaprost free acid, sulprostone, 1-Hydroxy PGE₁, Rp-8Br-cAMP, 8-HA-cAMP and 6-Benz-cAMP and purified rabbit polyclonal antibodies (pAbs) directed against EP2, EP3 and EP4 were from Cayman Chemical (Ann Arbor, MI). Monoclonal antibodies (mAbs) directed against TCR V δ 2 (clone B6), IFN- γ , TNF- α and CD107a were purchased from BD Bioscience (San Jose, CA). Anti-TCR V γ 9, anti-CD16 (clone 3G8), anti-CD3, anti-CD56 mAbs and goat F(ab')₂ anti-rabbit IgG were from Beckman-Coulter (Fullerton, CA). Purified mouse anti-CD3 mAb (clone OKT3) was purchased from eBioscience (San Diego, CA). Purified mAbs against NKp30 (clone 210845), NKp44 (clone 253415), NKp46 (clone 195314) and NKG2D (clone 149810) were from R&D Systems (Minneapolis, MN). The rabbit anti-Lck, anti-Y505 Lck, anti-PLC γ , anti-Y783 PLC γ , anti-Y493 ZAP70, anti-ERK1/2 pAbs, the rabbit anti-ZAP70 mAb, and the mouse anti-Y202/204 ERK1/2 mAb (all used at 1/1000) were purchased from Cell Signaling Technology (St. Quentin en Yvelines, France). Affinity purified secondary antibodies were purchased from Jackson ImmunoResearch Europe Ltd. (Newmarket, UK).

2.2 Cell isolation and culture

1
2
3
4
5
6
7 Fresh blood samples were collected from healthy donors, and Peripheral Blood Mononuclear
8
9 Cells (PBMC) were prepared on a Ficoll-Paque density gradient (Amersham Biosciences AB,
10
11 Uppsala, Sweden) by centrifugation (800 g, 30 min at room temperature [RT]). Primary V γ 9V δ 2
12
13 T cell lines were generated as described [25] from PBMC culture stimulated with BrHPP
14
15 (200nM, Innate Pharma, Marseilles, France) and IL-2 (300 U/mL, Sanofi-Aventis, Labège,
16
17 France) in complete RPMI-1640 medium, e.g with penicillin, streptomycin (Cambrex Bio
18
19 Science, Verviers, Belgium), sodium pyruvate, and 10% of heat-inactivated FCS (Invitrogen
20
21 Corp., Paisley, UK). These cell lines comprised more than 95% TCR V γ 9V δ 2⁺ cells. Highly pure
22
23 CD3⁻CD56⁺ NK cells (> 90%, as checked by flow cytometry) were negatively selected by
24
25 magnetically activated cell sorting (NK cell isolation kit II, Miltenyi Biotec, Auburn, CA)
26
27 according to the manufacturer's instructions. NK cells were then activated with 100 U/mL IL-2
28
29 (Sanofi-Aventis, Labège, France) in complete RPMI medium for 2 days before use.
30
31
32
33
34
35
36
37
38
39
40

41 2.3. ⁵¹Cr-release cytotoxic assays

42
43
44
45
46
47

48 Fc γ R⁺ target cells were labelled with 100 μ Ci ⁵¹Cr-sodium bichromate (Amersham
49
50 Biosciences AB, Uppsala, Sweden). After 3 washes, ⁵¹Cr-labelled P815 cells were incubated for
51
52 30 min at RT for redirected lyses with mouse mAbs directed against NKp30 (5 μ g/mL), NKp44
53
54 (5 μ g/mL), NKp46 (5 μ g/mL), NKG2D (15 μ g/mL), CD16 (5 μ g/mL) or TCR V δ 2 (5 μ g/mL). A
55
56 standard ⁵¹Cr-release assay was then conducted for 4h with V γ 9V δ 2 T cells or NK cells in the
57
58
59
60
61
62
63
64
65

1
2
3
4 presence of increasing doses of PGE₂ with an Effector/Target cell ratio of 5/1. The percentage of
5
6 specific lysis was calculated as follows: [(⁵¹Cr release) – (spontaneous release)] / [(maximum
7
8 release) – (spontaneous release)] x 100.
9

10 11 12 13 14 15 16 *2.4. Cytokine production* 17 18 19 20 21 22

23
24 Vγ9Vδ2 T cells were stimulated for 5h with increasing doses of BrHPP in the presence or
25
26 absence of PGE₂ (1 μg/mL) and 10 μM Brefeldin A (Sigma-Aldrich, Saint-Louis, MO). Cells
27
28 were stained with anti-TCRγ9-FITC, fixed with PBS 2% paraformaldehyde, stained for 30 min in
29
30 PBS 1% saponin with mAbs directed against IFNγ and TNFα as described previously [21].
31
32
33
34
35
36
37
38

39 *2.5. CD107a degranulation assays* 40 41 42 43 44 45

46 P815 were incubated for 30 min RT with mouse mAbs directed against NKp30 (5 μg/mL),
47
48 NKp44 (5 μg/mL), NKp46 (5 μg/mL), NKG2D (15 μg/mL), CD16 (5 μg/mL) or TCR Vδ2 (5
49
50 μg/mL). 10⁵ Vγ9Vδ2 T cells or NK cells were incubated with 10⁵ P815 in complete RPMI
51
52 medium in the presence of 5 μg/mL anti-CD107a-PC5 or IgG1-PE-Cy5 antibodies. Soluble
53
54 PGE₂, PKA type I subunit agonists 8-HA-cAMP and 6-Benz-cAMP or EP1-4 receptor agonists
55
56 1-Hydroxy PGE₁, butaprost free acid and sulprostone were added at the beginning of the test at
57
58
59
60
61
62
63
64
65

1
2
3
4 the indicated concentrations. In some experiments NK and V γ 9V δ 2 T cells were pre-incubated
5
6 with PKA type I inhibitor Rp-8Br-cAMP (1mM) for 1h in complete RPMI medium. Cells were
7
8 pelleted by gentle centrifugation (110 g for 1 min), left in co-incubation for 5h and washed with
9
10 PBS/EDTA 0.5 mM. Cells were then stained for 15 min at 4°C with anti-TCR V γ 9-FITC for
11
12 V γ 9V δ 2 T cells or with anti-CD3-PE and anti-CD56-PC7 for NK cells. Rates of V γ 9V δ 2 T cells
13
14 or NK cells expressing CD107a was then determined by flow cytometry in each experiment.
15
16
17
18
19
20
21
22
23

24 *2.6. PGE₂ receptor expression*

25
26
27
28
29
30

31 Total RNA was isolated from freshly isolated NK cells by TRIzolTM reagent and was reverse
32
33 transcribed with Moloney murine leukemia virus reverse transcriptase (Invitrogen Corp., Paisley,
34
35 UK). cDNA encoding human EP1, EP2, EP3, EP4 and Hypoxantine PhosphoRibosyl Transferase
36
37 (HPRT) were amplified by PCR as previously described [21]. The size of the fragments for EP1,
38
39 (HPRT) were amplified by PCR as previously described [21]. The size of the fragments for EP1,
40
41 EP2, EP3, EP4 and HPRT were 455 bp, 409 bp, 451 bp, 377 bp and 369 bp respectively. The
42
43 corresponding receptor proteins were detected by flow cytometry using rabbit primary pAbs
44
45 directed against EP2, EP3 and EP4 (Cayman Chemical, Ann Arbor, MI) and FITC conjugated
46
47 goat F(ab)₂ anti-rabbit IgG secondary antibody.
48
49
50
51
52
53
54
55

56 *2.7. Western Blot*

57
58
59
60
61
62
63
64
65

1
2
3
4
5
6
7 V γ 9V δ 2 T cells were pre-treated 30 min with PGE₂ (1 μ g/mL) and then incubated with anti-
8
9 CD3 mAb for TCR cross-linking and PGE₂ during different times. Cells were washed with cold
10
11 PBS and lysed in lysis buffer (30 mM Tris-HCl, pH 7.5, 150 mM NaCl, 5 mM EDTA, 1%
12
13 Nonidet P-40, 10% glycerol, 1 mM Na₃VO₄, 10 mM NaF, 1 mM phenylmethylsulfonyl fluoride,
14
15 10 mM β -glycerophosphate, 10 μ g/mL leupeptin, and 10 μ g/mL aprotinin) for 5 min on ice,
16
17 followed by centrifugation at 13 000 g for 5 min at 4°C. For each lysate, 30 μ g of total protein
18
19 were boiled for 5 min at 95°C in the presence of 5% β -mercaptoethanol. Proteins were separated
20
21 in a 10% SDS-PAGE and transferred onto nitrocellulose membranes (Amersham Biosciences
22
23 AB, Uppsala, Sweden). Nonspecific binding to the membrane was blocked for 1h at RT with 10%
24
25 nonfat milk in PBS containing 0.1% Tween 20 (PBST). Membranes were incubated overnight at
26
27 4°C with specific primary antibody diluted at an appropriate concentration in PBST containing
28
29 1% nonfat milk. Membranes were then washed 3 times at RT and bound immunoglobulins were
30
31 detected with horseradish peroxidase-conjugated secondary antibody for 30 min at RT in 1%
32
33 nonfat milk dissolved in PBST. Membranes were then washed with PBST and bound Abs were
34
35 detected by the enhanced chemiluminescence system ECL kit (Amersham Biosciences AB,
36
37 Uppsala, Sweden).
38
39
40
41
42
43
44
45
46
47
48
49
50

51 2.8. Statistical analysis

52
53
54
55
56
57
58
59
60
61
62
63
64
65

1
2
3
4 Significant differences were assessed by Student's t-test (for normal distributions) or Mann-
5
6
7
8
9
10
11
12
13
14
15
16
17
18
19
20
21
22
23
24
25
26
27
28
29
30
31
32
33
34
35
36
37
38
39
40
41
42
43
44
45
46
47
48
49
50
51
52
53
54
55
56
57
58
59
60
61
62
63
64
65

Significant differences were assessed by Student's t-test (for normal distributions) or Mann-Whitney's rank sum (for other distributions) two-tailed tests with $\alpha = 0.01$ with the SigmaStat software (Systat Software Inc., San Jose, CA).

3. Results

3.1. *PGE₂ inhibits the responses of $\gamma\delta$ T cells mediated by TCR V γ 9V δ 2, NKG2D and CD16*

First of all, we wished to determine if the inhibition of the functions of $\gamma\delta$ T cells by PGE₂ could be overcome by strong activation of TCR V γ 9V δ 2. In this purpose, we first co-incubated $\gamma\delta$ T cells with the Fc γ R⁺ mouse mastocytoma cell line P815 coated with increasing doses of anti-TCR V δ 2 mAbs. We analyzed the level of expression of CD107a after cytolytic degranulation [26] of $\gamma\delta$ T cells. We observed that the percentage of CD107a⁺ $\gamma\delta$ T cells was significantly inhibited by PGE₂ even when P815 cells were coated with the highest dose of anti-TCR V δ 2 (Fig. 1a). Then, analysis of the intracellular production of IFN- γ and TNF- α by V γ 9V δ 2 T cells stimulated with increasing doses of the synthetic PAg BrHPP [25] showed that PGE₂ at 1 μ g/mL inhibited the production of these cytokines even at 25 times as much as the EC₅₀ of BrHPP (Fig. 1b). Thus, a strong activation of TCR V γ 9V δ 2 did not thwart inhibition of $\gamma\delta$ T cell functions by PGE₂. Since other activating receptors such as NKG2D and CD16 also participate in the recognition and destruction of target cells by $\gamma\delta$ T cells [5,10], we wanted to determine if PGE₂

1
2
3
4 also interfered with the ability of NKG2D and CD16 to trigger $\gamma\delta$ T cell cytotoxicity. In a
5
6 redirected lysis assay based on the release of ^{51}Cr by target cells, we analyzed the ability of $\gamma\delta$ T
7
8 cells to kill the P815 cell line coated either with anti-TCR V δ 2, anti-NKG2D or anti-CD16 mAbs
9
10 (to activate each of these receptors) in the presence of increasing concentrations of PGE₂. We
11
12 observed that PGE₂ significantly inhibited the cytotoxicity of $\gamma\delta$ T cells induced either by TCR
13
14 V γ 9V δ 2, NKG2D or CD16 (Fig. 1c).
15
16
17
18
19
20
21
22
23

24 *3.2. PGE₂ inhibits the cytotoxicity of NK cells mediated by NCR, NKG2D and CD16*

25
26
27
28
29
30
31

32 To determine if PGE₂ interfered with the cytotoxicity triggered through the different classes
33
34 of cytotoxic NKR, we analyzed the level of expression of CD107a after cytolytic degranulation
35
36 of NK cells co-incubated with P815 cells coated either with anti-NKG2D, anti-CD16 or a mix of
37
38 anti-NCR mAbs. We observed that the percentage of CD107a⁺ NK cells was significantly
39
40 inhibited by increasing doses of PGE₂ (Fig. 2a), in a dose-dependent manner (Fig. 2b). To
41
42 confirm this data, we performed a redirected lysis assay based on the release of ^{51}Cr by target
43
44 cells in which we analyzed the ability of NK cells to kill the P815 cell line coated either with
45
46 anti-NKp30, anti-NKp44, anti-NKp46 (alone for Fig. 2c or in combination for Fig. 2d), anti-
47
48 CD16 or anti-NKG2D mAbs (Fig. 2c) in the presence of increasing concentrations of PGE₂ (Fig.
49
50 2d). Our results clearly show that PGE₂ significantly inhibited cytotoxicity of NK cells induced
51
52 through all classes of NKR.
53
54
55
56
57
58
59
60
61
62
63
64
65

3.3. Inhibition of NKR signaling by PGE₂ is mediated through EP2 and EP4 receptors

PGE₂ is recognized by four different subtypes of G protein-coupled E-prostanoid (EP) receptors (EP1-4). Since there is no data available concerning the expression of PGE₂ receptors EP1-4 at the surface of NK cells, we decided to analyze the expression of these receptors by NK cells. Using RT-PCR, we show that mRNA for EP2, EP3 and EP4, but not for EP1, were found in NK cells freshly isolated from three different donors (Fig. 3a). This was confirmed by flow cytometry analysis of the cell surface expression of the EP2, EP3 and EP4 receptors on freshly isolated NK cells (Fig. 3b). The pattern of expression of the 3 receptors was the same at the surface of NK cells after 3 days in culture with IL-2 (data not shown). EP2 and 4 are coupled to G_s protein, activate adenylate cyclase and increase cyclic adenosine monophosphate (cAMP), whereas the major signaling pathway of EP3 inhibits adenylate cyclase via G_i protein and decreases cAMP [27]. To determine the respective roles of EP2-4 in the inhibition of NCR, CD16 and NKG2D receptors, NK cells were co-incubated with P815 cells coated either with anti-NCR, anti-CD16 or anti-NKG2D mAbs in the presence of PGE₂ or different EP-specific agonists. The expression of CD107a at the surface of NK cells was measured by flow cytometry and inhibition of degranulation was calculated (Fig. 3c). We observed that butaprost free acid, a structural analog of PGE₂ with a good selectivity for EP2 and a potent agonist effect, was the most effective inhibitor of NK cell degranulation. Nevertheless, its activity was lower than that of PGE₂. The EP3 and EP4 agonist 1-Hydroxy PGE₁ was also inhibitory although at much higher concentrations. Nevertheless, since sulprostone, an agonist of EP1 and EP3, had not effect on NK cell degranulation, the inhibitory effect of 1-Hydroxy PGE₁ had to be mediated through EP4.

1
2
3
4 Altogether, these results demonstrate that PGE₂ inhibited the ability of NCR, CD16 and NKG2D
5
6 receptors to activate the degranulation of NK cells through their EP2 and EP4 receptors. We
7
8 previously found similar results regarding the inhibition of V γ 9V δ 2 T lymphocyte functions by
9
10 PGE₂ [21].
11
12
13
14
15
16
17
18

19 *3.4 Activation of PKA type I inhibits NKR- and TCR V γ 9V δ 2-induced degranulation of NK and* 20 21 *γ δ T cells* 22 23 24 25 26 27 28

29 As EP2 and 4 activate adenylate cyclase to increase cAMP [27], it was tempting to
30
31 hypothesize that PGE₂ interfered with the cytotoxicity of NK and γ δ T cells triggered by NKR
32
33 and TCR V γ 9V δ 2 through a cAMP-dependent mechanism. Increase of intracellular cAMP is
34
35 known to activate PKA type I enzyme which has already been implicated in the inhibition of T
36
37 cell functions and NK cell cytotoxicity against tumor cells [28,29]. The binding of cAMP to the
38
39 A and B sites on the regulatory subunits (RIA and RIB) of PKA type I results in the dissociation
40
41 of the enzyme complex releasing two free catalytic subunits which are then able to phosphorylate
42
43 specific substrate proteins [30]. In order to determine if PKA type I was implicated in the
44
45 inhibition of the triggering of NK and γ δ T cell cytotoxicity by NKR and TCR V γ 9V δ 2, we
46
47 analyzed the effect of specific analogs of cAMP that selectively bind to RIA and RIB subunits of
48
49 PKA type I on the degranulation of NK and γ δ T cells. NK or γ δ T cells were co-incubated with
50
51 P815 cells coated either with anti-NCR, anti-CD16, anti-NKG2D or anti-TCR V δ 2 mAbs
52
53
54
55
56
57
58
59 respectively, in the presence of 6-Bz-cAMP, an agonist of the RIA subunit of PKA type I, and/or
60
61
62
63
64
65

1
2
3
4 8-HA-cAMP, an agonist of the RIB subunit of PKA type I. The rate of CD107a⁺ cells was
5
6 analyzed by flow cytometry in each condition for $\gamma\delta$ T cells (Fig. 4a) and NK cells (Fig. 4b). RIA
7
8 and RIB both inhibited the cytotoxicity of NK and $\gamma\delta$ T cells induced either by TCR V γ 9V δ 2,
9
10 NCR, CD16 or NKG2D activation.
11
12
13
14
15
16
17
18

19 *3.5. Blockade of PKA type I reverses the inhibition by PGE₂ of degranulation of NK and $\gamma\delta$ T*
20
21 *cells induced by NKR and TCR V γ 9V δ 2 triggering*
22
23
24
25
26
27
28

29 The data presented above indicated that the activation of PKA type I mimicked the inhibitory
30 effects of PGE₂ on NKR and TCR V γ 9V δ 2 activation. Rp-8-Br-cAMP is the most potent
31 antagonist of RIA and RIB subunits of PKA type I. Thus, its binding to RIA and RIB prevents
32 the dissociation of PKA type I catalytic units and blocks the ability of the latter to phosphorylate
33 substrate proteins [31]. In order to formally demonstrate that PKA type I is involved in PGE₂
34 inhibitory effects we analyzed the ability of Rp-8-Br-cAMP to prevent the inhibitory effect of
35 PGE₂. NK and $\gamma\delta$ T cells had been pre-treated with Rp-8-Br-cAMP and then co-incubated with
36 the P815 cell line coated with anti-NCR, anti-CD16, anti-NKG2D or anti-TCR V δ 2 in the
37 presence of PGE₂. We observed that the blockade of PKA type I by Rp-8-Br-cAMP significantly
38 prevented the inhibition by PGE₂ of the degranulation of V γ 9V δ 2 T cells (Fig. 5a) and NK cells
39 (Fig. 5b) induced by NKR and TCR V γ 9V δ 2 triggering. These results demonstrate that PKA type
40 I was critically involved in PGE₂-mediated inhibition of TCR V γ 9V δ 2 and NKR signaling.
41
42
43
44
45
46
47
48
49
50
51
52
53
54
55
56
57
58
59
60
61
62
63
64
65

3.6. *Lck Y505 phosphorylation induced by PGE₂ inhibits TCR V γ 9V δ 2 signaling pathway*

In order to determine how PGE₂ interfered with the signaling pathway of TCR V γ 9V δ 2, cell lysates were prepared from $\gamma\delta$ T cells activated by the cross-linking of their TCR with an anti-CD3 mAb, in the presence or the absence of PGE₂. The activation status of key proteins (the protein tyrosine kinase ZAP70, PLC γ and ERK 1/2 MAP kinases) of the TCR signaling pathway was then evaluated by Western Blot using specific mAbs against phosphorylated and total proteins. We observed that 30s after the activation of $\gamma\delta$ T cells, proximal signaling proteins ZAP70 and PLC γ became both strongly phosphorylated and then their phosphorylation level decreased (Fig. 6a). Following ZAP70 and PLC γ phosphorylation, the maximal phosphorylation of the downstream MAP kinases ERK1/2 occurred 15 min after activation of $\gamma\delta$ T cells (Fig. 6a). In sharp contrast, in the presence of PGE₂, ZAP70 and PLC γ phosphorylation was notably decreased and ERK 1/2 phosphorylation was nearly abolished (Fig. 6a). It is noteworthy that the inhibition of ZAP70 phosphorylation by PGE₂ strongly suggests that the blockade of TCR V γ 9V δ 2 signaling by PGE₂ takes place during the very first events of the TCR signaling cascade. Following T cell activation, tyrosine phosphorylation of the TCR-associated CD3 ζ chain mediated by Lck (a protein kinase of the Src family) is a key step leading to the recruitment and the phosphorylation of ZAP70 which in its turn propagates the activating signal downstream the TCR. The COOH-terminal Src kinase Csk plays an important regulatory role in T cell activation by its ability to inhibit the activity of Lck through the phosphorylation of the latter in Y505 [32]. Previous studies demonstrated that cAMP elevating agents inhibit TCR $\alpha\beta$ signaling through the

1
2
3
4 phosphorylation of Csk at S364 by PKA type I. Phosphorylation of Csk at S364 increases its
5
6 stability and activity (phosphorylation of Lck at Y505) and consequently inactivates Lck
7
8 [29,33,34]. Since the PKA type I was involved in the inhibition of TCR V γ 9V δ 2 by PGE₂, we
9
10 analyzed the Y505 phosphorylation status of Lck after $\gamma\delta$ T cell activation in the presence of
11
12 PGE₂. Western Blot using specific mAbs against phosphorylated and total Lck in lysates of
13
14 activated $\gamma\delta$ T cells in the presence or absence of PGE₂ indicates that Lck phosphorylation was
15
16 strongly increased in the presence of PGE₂ during the activation of $\gamma\delta$ T cells (Fig. 6b).
17
18
19
20
21

22 Altogether, these results establish that the blockade of TCR V γ 9V δ 2 signaling cascade by PGE₂
23
24 is due to the phosphorylation of Lck at Y505 by the cAMP-activated PKA type I.
25
26
27
28
29
30
31

32 **4. Discussion and conclusions**

33
34
35
36
37
38

39 The inhibition of immune cell responses by PGE₂ derived from tumor stroma represents a
40
41 major barrier to the success of immunotherapies [15]. By their ability to sense ligands up-
42
43 regulated by oncogenic stress on cell surface, to mediate ADCC and to kill tumor cells without
44
45 MHC-dependent presentation of tumor antigens, NK and $\gamma\delta$ T cells show a great therapeutic
46
47 interest [1,2]. These cells differ from conventional $\alpha\beta$ T cells and B cells in that they use
48
49 numerous activating and inhibitory receptors which can operate independently one from another
50
51 to trigger or inhibit destruction of target cells [3]. Even if previous reports have demonstrated that
52
53 PGE₂ is able to suppress the destruction of some tumor cell lines by NK and $\gamma\delta$ T cells
54
55 [21,23,24], it remains undetermined which receptors are subjected to inhibition by PGE₂. In this
56
57
58
59
60
61
62
63
64
65

1
2
3
4 report, using mAbs for redirecting the specific lysis of the mouse Fc γ R⁺ cell line P815, we clearly
5
6 demonstrate that the major NKR (NKp30, NKp44, NKp46, NKG2D and CD16) and the major $\gamma\delta$
7
8 T cell receptors (TCR V γ 9V δ 2, NKG2D and CD16) are all inhibited by PGE₂ through a cAMP-
9
10 mediated PKA type I-dependent mechanism following the binding of PGE₂ on EP2 and EP4.
11
12

13
14 The activation of PKA type I by agents increasing cAMP - such as PGE₂ and adenosine - has
15
16 already been shown to suppress global responses of NK and $\gamma\delta$ T cells [28,29]. To our
17
18 knowledge, this is the first report demonstrating that the activation of PKA type I mediated by
19
20 PGE₂ suppresses $\gamma\delta$ T cell cytolytic responses triggered by TCR V γ 9V δ 2, NKG2D or CD16. A
21
22 first argument lies in the fact that Rp-8-Br-cAMP - a selective antagonist of PKA type I -
23
24 prevents the inhibition by PGE₂ of the cytolytic degranulation of $\gamma\delta$ T cells induced by activation
25
26 of TCR V γ 9V δ 2. Secondly, our demonstration is supported by the evidence that PGE₂ inactivates
27
28 Lck in $\gamma\delta$ T cells through its phosphorylation at Y505. This inactivation prevents in turn the
29
30 phosphorylation of ZAP70, a key enzyme in TCR signaling. It is reasonable to speculate that the
31
32 phosphorylation of Csk at S364 mediated by PKA type I is involved in the phosphorylation of
33
34 Lck at Y505 by PGE₂. This has already been demonstrated in $\alpha\beta$ T cells [33]. The observation
35
36 that PGE₂ inhibits the cytotoxicity of $\gamma\delta$ T cells triggered by any of their major cytolytic receptors
37
38 is of importance in regard with the prospect of developing $\gamma\delta$ T cell-based -therapy of cancer to
39
40 restore strong anti-tumor immunity in humans [1].
41
42
43
44
45
46
47
48
49

50 Like TCR, NCR and CD16 are associated with adapter proteins (such as CD3 ζ , DAP12 and
51
52 Fc ϵ RI- γ) which bear Immunoreceptor Tyrosine-based Activating Motifs (ITAM) and recruit the
53
54 tyrosine kinases ZAP70 and Syk [35]. In contrast, NKG2D is associated with the adapter protein
55
56 DAP10 which contains an YINM motif and recruits the adapter Grb2 and the kinase PI3K
57
58 [36,37]. All these adapter proteins need to be phosphorylated by kinases of the Src family (such
59
60
61
62
63
64
65

1
2
3
4 as Lck) to transmit their activating signal [35]. We show that cAMP and PKA type I are both
5
6 implicated in the inhibition of NCR, CD16 and NKG2D by PGE₂ suggesting that, like $\alpha\beta$ and
7
8 V γ 9V δ 2 TCR, blockade by PGE₂ is dependent on the inactivation of Lck mediated by Csk. Other
9
10 kinases of the Src family such as Fyn, Src, Yes and Lyn are also expressed in NK cells and might
11
12 have redundant functions with Lck [35]. It remained to be determined if these Src kinases are also
13
14 targeted by the activation of PKA type I mediated by PGE₂.
15
16
17
18

19 Studies on the mechanism of action of therapeutic mAbs (such as Trastuzumab and
20
21 Rituximab) used in breast cancer and lymphomas suggest an important role for ADCC mediated
22
23 by CD16 [38 , 39].NK and $\gamma\delta$ T cells have been shown to actively participate in the ADCC of
24
25 cancer cells coated with therapeutic mAbs [8–10]. Since many cancers over-express COX2 and
26
27 produce high amounts of PGE₂ [16,17], the ability of PGE₂ to down regulate NK and $\gamma\delta$ T cells
28
29 cytotoxicity triggered by CD16 might be involved in the numerous cases of tumor resistance to
30
31 treatment with mAbs depicted until now [39]. Neutralizing the biosynthesis of PGE₂ with COX2
32
33 inhibitors is already aimed at improving $\alpha\beta$ T cell-based cancer immunotherapy [40]. Our results
34
35 suggest that such an approach could also benefit to mAbs-based therapies.
36
37
38
39
40

41 We also demonstrate that PGE₂ suppresses the cytotoxicity of NK cells mediated by NCR
42
43 (NKp30, NKp44 and NKp46) when they are triggered separately or in combination. NCR have
44
45 been studied extensively, demonstrating the importance of these receptors in the destruction of
46
47 tumor cells by NK cells. Blocking one or more of these receptors often inhibits killing of tumor
48
49 cells by human NK cells in vitro [11]. Mice with targeted mutation in the gene encoding NKp46
50
51 are impaired in their ability to eradicate transferred lymphoma [41]. It has been suggested that a
52
53 functional cross-talk between the different members of NCR occurs in NK cells possibly
54
55 resulting in the amplification of these activating signals [42].
56
57
58
59
60
61
62
63
64
65

1
2
3
4 From its part, NKG2D has received considerable attention owing to evidence of its important
5
6 role in immunosurveillance of tumors [6,7]. Indeed, genotoxic stress that activates DNA damage
7
8 responses has been shown to induce the expression of NKG2D ligands (MICA, MICB, and
9
10 ULBPs) and most of established tumor cell lines constitutively express one or more of these
11
12 NKG2D ligands [43]. NK and $\gamma\delta$ T cells express high levels of NKG2D which has been shown
13
14 to directly promote their cytotoxic responses against target cells [5,44]. Therefore, the recognition
15
16 of NKG2D ligands on tumor cells must play an important role in tumor immunosurveillance or
17
18 eradication by NK and $\gamma\delta$ T cells [6,7,45]. Several inhibitory factors produced by tumor stroma
19
20 such as TGF- β have already been shown to interfere with the activation of NK cells by NKG2D
21
22 triggering [46]. Here we report that PGE₂ inhibits through a cAMP-dependent mechanism the
23
24 cytotoxicity activated by NKG2D triggering. This might be another way for tumor cells to avoid
25
26 eradication by NK and $\gamma\delta$ T cells. NKG2D has also been shown to act as a co-receptor allowing
27
28 the destruction of tumor cells by cytotoxic T cells (CTL) [47]. The present study did not
29
30 investigate the ability of PGE₂ to inhibit NKG2D co-activation of CTL. Nevertheless, the ability
31
32 of PKA type I to inhibit NKG2D-mediated activation of NK and $\gamma\delta$ T cells, strongly suggests that
33
34 PGE₂ will inhibit NKG2D signaling in CTL since previous studies demonstrated that the increase
35
36 of cAMP mediated by PGE₂ leads to PKA type I activation in these cells [29,48].
37
38
39
40
41
42
43
44
45

46 Taken together, our results outline the broad inhibitory properties of PGE₂ towards the major
47
48 cytotoxic receptors of NK and $\gamma\delta$ T cells. Considered from its deleterious side, the problem raised
49
50 by PGE₂ should be taken into account when designing anti-cancer immunotherapies (based either
51
52 on molecular or cellular tools) in which the cytotoxic properties of NK and $\gamma\delta$ T cells are
53
54 targeted.
55
56
57
58
59
60
61
62
63
64
65

Acknowledgements

This work was supported by institutional grants from the « Institut National de la Santé Et de la Recherche Médicale » (INSERM), the University Paul Sabatier and the « Institut National du Cancer » (INCa, contract # 07/3D1616/IABC-23-8/NC-NG). L.M. was granted by the MESR (Ministère de l'Enseignement Supérieur et de la Recherche).

References

- [1] Bonneville M, Scotet E. Human Vgamma9Vdelta2 T cells: promising new leads for immunotherapy of infections and tumors. *Curr Opin Immunol* 2006; 18:539-46.
- [2] Ljunggren HG, Malmberg KJ. Prospects for the use of NK cells in immunotherapy of human cancer. *Nat Rev Immunol* 2007; 7:329-39.
- [3] Raulet DH, Vance RE. Self-tolerance of natural killer cells. *Nat Rev Immunol* 2006; 6:520-31.
- [4] Poupot M, Fournie JJ. Non-peptide antigens activating human Vgamma9/Vdelta2 T lymphocytes. *Immunol Lett* 2004; 95:129-38.
- [5] Rincon-Orozco B, Kunzmann V, Wrobel P, Kabelitz D, Steinle A, Herrmann T. Activation of Vgamma9Vdelta2 T cells by NKG2D. *J Immunol* 2005; 175:2144-51.

- 1
2
3
4 [6] Smyth MJ, Swann J, Cretney E, Zerafa N, Yokoyama WM, Hayakawa Y. NKG2D
5
6 function protects the host from tumor initiation. *J Exp Med* 2005; 202:583-8.
7
8
9 [7] Girardi M, Oppenheim DE, Steele CR, Lewis JM, Glusac E, Filler R, et al. Regulation of
10
11 cutaneous malignancy by gammadelta T cells. *Science* 2001; 294:605-9.
12
13
14 [8] Varchetta S, Gibelli N, Oliviero B, Nardini E, Gennari R, Gatti G, et al. Elements related
15
16 to heterogeneity of antibody-dependent cell cytotoxicity in patients under trastuzumab
17
18 therapy for primary operable breast cancer overexpressing Her2. *Cancer Res* 2007;
19
20 67:11991-9.
21
22
23 [9] Tokuyama H, Hagi T, Mattarollo SR, Morley J, Wang Q, Fai-So H, et al.
24
25 Vgamma9Vdelta2 T cell cytotoxicity against tumor cells is enhanced by monoclonal
26
27 antibody drugs rituximab and trastuzumab. *Int J Cancer* 2008; 122:2526-34.
28
29
30 [10] Gertner-Dardenne J, Bonnafous C, Bezombes C, Capietto AH, Scaglione V, Ingoure S, et
31
32 al. Bromohydrin pyrophosphate enhances antibody-dependent cell-mediated cytotoxicity
33
34 induced by therapeutic antibodies. *Blood* 2009; 113:4875-84.
35
36
37 [11] Moretta A, Bottino C, Vitale M, Pende D, Cantoni C, Mingari MC, et al. Activating
38
39 receptors and coreceptors involved in human natural killer cell-mediated cytotoxicity. *Annu*
40
41 *Rev Immunol* 2001; 19:197-223.
42
43
44 [12] von Lilienfeld-Toal M, Nattermann J, Feldmann G, Sievers E, Frank S, Strehl J, et al.
45
46 Activated gammadelta T cells express the natural cytotoxicity receptor natural killer p 44
47
48 and show cytotoxic activity against myeloma cells. *Clin Exp Immunol* 2006; 144:528-33.
49
50
51 [13] Zou W. Immunosuppressive networks in the tumour environment and their therapeutic
52
53 relevance. *Nat Rev Cancer* 2005; 5:263-74.
54
55
56 [14] Martinet L, Poupot R, Fournie JJ. Pitfalls on the roadmap to gammadelta T cell-based
57
58 cancer immunotherapies. *Immunol Lett* 2009; 124:1-8.
59
60
61
62
63
64
65

- 1
2
3
4 [15] Harris SG, Padilla J, Koumas L, Ray D, Phipps RP. Prostaglandins as modulators of
5
6 immunity. *Trends Immunol* 2002; 23:144-50.
7
8
9 [16] Tsujii M, Kawano S, DuBois RN. Cyclooxygenase-2 expression in human colon cancer
10
11 cells increases metastatic potential. *Proc Natl Acad Sci USA* 1997; 94:3336-40.
12
13
14 [17] Ristimaki A, Sivula A, Lundin J, Lundin M, Salminen T, Haglund C, et al. Prognostic
15
16 significance of elevated cyclooxygenase-2 expression in breast cancer. *Cancer Res* 2002;
17
18 62:632-5.
19
20
21 [18] Betz M, Fox BS. Prostaglandin E2 inhibits production of Th1 lymphokines but not of Th2
22
23 lymphokines. *J Immunol* 1991; 146:108-13.
24
25
26 [19] Okano M, Sugata Y, Fujiwara T, Matsumoto R, Nishibori M, Shimizu K, et al. E
27
28 prostanoid 2 (EP2)/EP4-mediated suppression of antigen-specific human T-cell responses
29
30 by prostaglandin E2. *Immunology* 2006; 118:343-52.
31
32
33 [20] Sharma S, Yang SC, Zhu L, Reckamp K, Gardner B, Baratelli F, et al. Tumor
34
35 cyclooxygenase-2/prostaglandin E2-dependent promotion of FOXP3 expression and
36
37 CD4+ CD25+ T regulatory cell activities in lung cancer. *Cancer Res* 2005; 65:5211-20.
38
39
40 [21] Martinet L, Fleury-Cappellesso S, Gadelorge M, Dietrich G, Bourin P, Fournie JJ, et al. A
41
42 regulatory cross-talk between Vgamma9Vdelta2 T lymphocytes and mesenchymal stem
43
44 cells. *Eur J Immunol* 2009; 39:752-62.
45
46
47 [22] Joshi PC, Zhou X, Cuchens M, Jones Q. Prostaglandin E2 suppressed IL-15-mediated
48
49 human NK cell function through down-regulation of common gamma-chain. *J Immunol*
50
51 2001; 166:885-91.
52
53
54 [23] Linnemeyer PA, Pollack SB. Prostaglandin E2-induced changes in the phenotype,
55
56 morphology, and lytic activity of IL-2-activated natural killer cells. *J Immunol* 1993;
57
58 150:3747-54.
59
60
61
62
63
64
65

- 1
2
3
4 [24] Yakar I, Melamed R, Shakhar G, Shakhar K, Rosenne E, Abudarham N, et al.
5
6 Prostaglandin e(2) suppresses NK activity in vivo and promotes postoperative tumor
7
8 metastasis in rats. *Ann Surg Oncol* 2003; 10:469-79.
9
- 10
11 [25] Espinosa E, Belmant C, Pont F, Luciani B, Poupot R, Romagne F, et al. Chemical
12
13 synthesis and biological activity of bromohydrin pyrophosphate, a potent stimulator of
14
15 human gamma delta T cells. *J Biol Chem* 2001; 276:18337-44.
16
17
- 18
19 [26] Poupot M, Fournie JJ, Poupot R. Trogocytosis and killing of IL-4-polarized monocytes by
20
21 autologous NK cells. *J Leukoc Biol* 2008; 84:1298-305.
22
- 23
24 [27] Sugimoto Y, Narumiya S. Prostaglandin E receptors. *J Biol Chem* 2007; 282:11613-7.
25
- 26
27 [28] Lokshin A, Raskovalova T, Huang X, Zacharia LC, Jackson EK, Gorelik E. Adenosine-
28
29 mediated inhibition of the cytotoxic activity and cytokine production by activated natural
30
31 killer cells. *Cancer Res* 2006; 66:7758-65.
32
- 33
34 [29] Aandahl EM, Moretto WJ, Haslett PA, Vang T, Bryn T, Tasken K, et al. Inhibition of
35
36 antigen-specific T cell proliferation and cytokine production by protein kinase A type I. *J*
37
38 *Immunol* 2002; 169:802-8.
39
- 40
41 [30] Skalhogg BS, Tasken K. Specificity in the cAMP/PKA signaling pathway. Differential
42
43 expression, regulation, and subcellular localization of subunits of PKA. *Front Biosci* 2000;
44
45 5:D678-93.
46
47
- 48
49 [31] Gjertsen BT, Mellgren G, Otten A, Maronde E, Genieser HG, Jastorff B, et al. Novel
50
51 (Rp)-cAMPS analogs as tools for inhibition of cAMP-kinase in cell culture. Basal cAMP-
52
53 kinase activity modulates interleukin-1 beta action. *J Biol Chem* 1995; 270:20599-607.
54
- 55
56 [32] Tasken K, Stokka AJ. The molecular machinery for cAMP-dependent immunomodulation
57
58 in T-cells. *Biochem Soc Trans* 2006; 34:476-9.
59
60
61
62
63
64
65

- 1
2
3
4 [33] Vang T, Torgersen KM, Sundvold V, Saxena M, Levy FO, Skalhegg BS, et al. Activation
5
6 of the COOH-terminal Src kinase (Csk) by cAMP-dependent protein kinase inhibits
7
8 signaling through the T cell receptor. *J Exp Med* 2001; 193:497-507.
9
10
11 [34] Vang T, Abrahamsen H, Myklebust S, Horejsi V, Tasken K. Combined spatial and
12
13 enzymatic regulation of Csk by cAMP and protein kinase a inhibits T cell receptor
14
15 signaling. *J Biol Chem* 2003; 278:17597-600.
16
17
18 [35] Lanier LL. Up on the tightrope: natural killer cell activation and inhibition. *Nat Immunol*
19
20 2008; 9:495-502.
21
22
23 [36] Upshaw JL, Arneson LN, Schoon RA, Dick CJ, Billadeau DD, Leibson PJ. NKG2D-
24
25 mediated signaling requires a DAP10-bound Grb2-Vav1 intermediate and
26
27 phosphatidylinositol-3-kinase in human natural killer cells. *Nat Immunol* 2006; 7:524-32.
28
29
30 [37] Billadeau DD, Upshaw JL, Schoon RA, Dick CJ, Leibson PJ. NKG2D-DAP10 triggers
31
32 human NK cell-mediated killing via a Syk-independent regulatory pathway. *Nat Immunol*
33
34 2003; 4:557-64.
35
36
37 [38] Dall'Ozzo S, Tartas S, Paintaud G, Cartron G, Colombat P, Bardos P, et al. Rituximab-
38
39 dependent cytotoxicity by natural killer cells: influence of FCGR3A polymorphism on the
40
41 concentration-effect relationship. *Cancer Res* 2004; 64:4664-9.
42
43
44 [39] Valabrega G, Montemurro F, Aglietta M. Trastuzumab: mechanism of action, resistance
45
46 and future perspectives in HER2-overexpressing breast cancer. *Ann Oncol* 2007; 18:977-
47
48 84.
49
50
51 [40] DeLong P, Tanaka T, Kruklitis R, Henry AC, Kapoor V, Kaiser LR, et al. Use of
52
53 cyclooxygenase-2 inhibition to enhance the efficacy of immunotherapy. *Cancer Res* 2003;
54
55 63:7845-52.
56
57
58
59
60
61
62
63
64
65

- 1
2
3
4 [41] Halfteck GG, Elboim M, Gur C, Achdout H, Ghadially H, Mandelboim O. Enhanced in
5
6 vivo growth of lymphoma tumors in the absence of the NK-activating receptor
7
8 NKp46/NCR1. *J Immunol* 2009; 182:2221-30.
9
10
11 [42] Augugliaro R, Parolini S, Castriconi R, Marcenaro E, Cantoni C, Nanni M, et al.
12
13 Selective cross-talk among natural cytotoxicity receptors in human natural killer cells. *Eur*
14
15 *J Immunol* 2003; 33:1235-41.
16
17
18 [43] Gasser S, Orsulic S, Brown EJ, Raulet DH. The DNA damage pathway regulates innate
19
20 immune system ligands of the NKG2D receptor. *Nature* 2005; 436:1186-90.
21
22
23 [44] Diefenbach A, Jensen ER, Jamieson AM, Raulet DH. Rae1 and H60 ligands of the
24
25 NKG2D receptor stimulate tumour immunity. *Nature* 2001; 413:165-71.
26
27
28 [45] Raulet DH, Guerra N. Oncogenic stress sensed by the immune system: role of natural
29
30 killer cell receptors. *Nature Rev Immunol* 2009; 9:568-80.
31
32
33 [46] Ghiringhelli F, Puig PE, Roux S, Parcellier A, Schmitt E, Solary E, et al. Tumor cells
34
35 convert immature myeloid dendritic cells into TGF-beta-secreting cells inducing
36
37 CD4+CD25+ regulatory T cell proliferation. *J Exp Med* 2005; 202:919-29.
38
39
40 [47] Groh V, Wu J, Yee C, Spies T. Tumour-derived soluble MIC ligands impair expression of
41
42 NKG2D and T-cell activation. *Nature* 2002; 419:734-8.
43
44
45 [48] Raskovalova T, Lokshin A, Huang X, Su Y, Mandic M, Zarour HM, et al. Inhibition of
46
47 cytokine production and cytotoxic activity of human antimelanoma specific CD8+ and
48
49 CD4+ T lymphocytes by adenosine-protein kinase A type I signaling. *Cancer Res* 2007;
50
51 67:5949-56.
52
53
54
55
56
57
58
59
60
61
62
63
64
65

1
2
3
4 **Figure captions**
5
6
7
8
9

10 **Fig. 1.** PGE₂ inhibits the responses of $\gamma\delta$ T cells mediated by TCR V γ 9V δ 2, NKG2D and CD16.

11
12 (a) Rates of CD107a⁺ V γ 9V δ 2 T lymphocytes after co-incubation with the P815 cell line coated
13
14 with anti-TCR V δ 2 in the presence (black bars) or absence (white bars) of PGE₂ at 1 μ g/mL
15
16 (means +/- SD from 3 independent experiments). (b) Rates of IFN- γ ⁺ (■) and TNF- α ⁺ (▲)
17
18 V γ 9V δ 2 T lymphocytes stimulated with increasing doses of BrHPP in the presence (black
19
20 symbols) or absence (grey symbols) of PGE₂ at 1 μ g/mL (representative of 3 independent
21
22 experiments). (c) Percentage of specific redirected lysis of ⁵¹Cr-loaded P815 cells coated either
23
24 with anti-TCR V δ 2 (■), anti-NKG2D (▲), anti-CD16 (●) or IgG1 isotype control (◇) by V γ 9V δ 2
25
26 lymphocytes in the presence of increasing doses of PGE₂ (means +/- SD from 3 independent
27
28 experiments). ★ *p* < 0.05, ★★ *p* < 0.01 in a Student's *t*-test.
29
30
31
32
33
34
35
36
37
38
39
40
41

42 **Fig. 2.** PGE₂ inhibits the cytotoxicity of NK cells mediated by NCR, NKG2D and CD16. (a) and
43
44 (b) Rates of CD107a⁺ NK cells after co-incubation with the P815 cell line coated either with an
45
46 IgG1 isotype control (IgG1), anti-NKG2D (α NKG2D), anti-CD16 (α CD16) or a mix of anti-
47
48 NCR (α NCR) mAbs, in the presence of different concentrations of PGE₂ (0, 1 or 10 μ g/mL). (a)
49
50 Representative data from n=5 independent experiments, (b) means +/- SD from 5 independent
51
52 experiments. (c) Percentage of specific redirected lysis of ⁵¹Cr-loaded P815 cells coated with the
53
54 indicated mAbs in the presence (black bars) or absence (white bars) of PGE₂ at 1 μ g/mL (means
55
56 +/- SD from 3 independent experiments). (d) Percentage of specific redirected lysis of ⁵¹Cr-
57
58
59
60
61
62
63
64
65

1
2
3
4 loaded P815 cells coated either with IgG1 isotype control (\square), , anti-CD16 (\bullet), anti-NKG2D (\blacklozenge)
5
6 or a mix of anti-NCR (\blacktriangle)mAbs in the presence of increasing doses of PGE₂ (representative data
7
8 from n=4 independent experiments). $\star p < 0.05$, $\star\star p < 0.01$, $\star\star\star p < 0.001$ in a Student's *t*-
9
10 test.
11
12
13
14
15
16
17
18

19 **Fig. 3.** Inhibition of NKR signaling by PGE₂ is mediated through EP2 and EP4 receptors. (a) RT-
20
21 PCR for EP2, EP3 and EP4 mRNA from freshly isolated NK cells purified from 3 healthy donors
22
23 (A, B and C); HPRT: mRNA for hypoxanthine phosphoribosyl transferase. (b) Cell surface
24
25 expression of EP2 (black line), EP3 (dotted line) and EP4 (dashed line) by freshly isolated NK
26
27 cells. The grey tint histogram on the left is the isotype control. (c) Rates of inhibition of CD107a
28
29 expression by NK cells after co-incubation with the P815 cell line coated either with anti-NCR,
30
31 anti-NKG2D or anti-CD16 mAbs in the presence of PGE₂ (\circ), EP1 and EP3 agonist sulprostone
32
33 (\blacktriangle), EP2 agonist butaprost free acid (\blacksquare) or EP3-4 agonist 1-Hydroxy PGE₁ (\bullet) (representative
34
35 from 4 independent experiments).
36
37
38
39
40
41
42
43
44
45

46 **Fig. 4.** Activation of PKA type I inhibits NKR- and TCR V γ 9V δ 2-induced degranulation of NK
47
48 and $\gamma\delta$ T cells. (a) and (b) Rates of CD107a⁺ V γ 9V δ 2 T cells (a) and NK cells (b) after co-
49
50 incubation with the P815 cell line coated either with an IgG1 isotype control (IgG1), anti-TCR
51
52 V γ 9 (α TCR V γ 9, for $\gamma\delta$ T cells), anti-NCR (α NCR), anti-NKG2D (α NKG2D) or anti-CD16
53
54 (α CD16) mAbs in the presence of 6-Benz-cAMP (0.5 mM, black bars), 8-HA-cAMP (0.5 mM,
55
56
57
58
59
60
61
62
63
64
65

1
2
3
4 grey bars) or both (0.25 mM each, hatched bars) (means +/- SD from 3 independent
5
6 experiments). ★ $p < 0.05$, ★★ $p < 0.01$ in a Student's t -test.
7
8
9

10
11
12
13
14 **Fig. 5.** Blockade of PKA type I reverses the inhibition by PGE₂ of degranulation of NK and $\gamma\delta$ T
15
16 cells induced by NKR and TCR V γ 9V δ 2 triggering. (a) and (b) Rates of CD107a⁺ V γ 9V δ 2 T
17
18 cells (a) and NK cells (b) pre-treated with 1 mM of Rp-8Br-cAMP (white and hatched bars) and
19
20 then co-incubated with the P815 cell line coated either with an IgG1 isotype control (IgG1), anti-
21
22 TCR V γ 9 (α TCR V γ 9, for $\gamma\delta$ T cells), anti-NCR (α NCR), anti-NKG2D (α NKG2D) or anti-CD16
23
24 (α CD16) mAbs in the presence (black and hatched bars) or in the absence (white bars) of PGE₂
25
26 at 1 μ g/mL (means +/- SD from 3 independent experiments). ★ $p < 0.05$, ★★ $p < 0.01$ in a
27
28 Student's t -test.
29
30
31
32
33
34
35
36
37
38

39 **Fig. 6.** Lck Y505 phosphorylation induced by PGE₂ inhibits TCR V γ 9V δ 2 signaling pathway. (a)
40
41 and (b) Lysates of V γ 9V δ 2 T cells were prepared after 0, 0.5, 1, 5 or 15 min of activation by
42
43 cross-linking of the TCR with an anti-CD3 mAb. Experiments were conducted in the presence or
44
45 the absence of PGE₂ at 1 μ g/mL. Data shown are representative of 3 independent experiments.
46
47 (a) Phosphorylated protein vs total protein labelling for the protein tyrosine kinase ZAP70, PLC γ
48
49 and ERK 1/2 MAP kinases. (b) Phosphorylated protein vs total protein labelling for the protein
50
51 tyrosine kinase Lck.
52
53
54
55
56
57
58
59
60
61
62
63
64
65

Fig. 1.

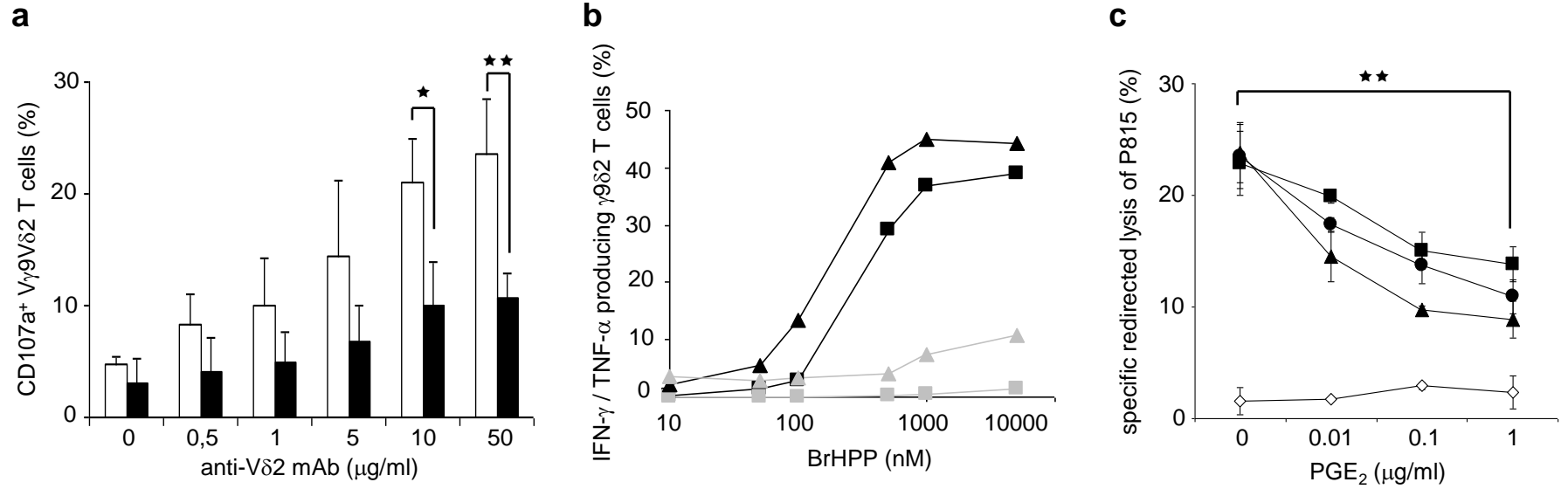


Fig. 2.

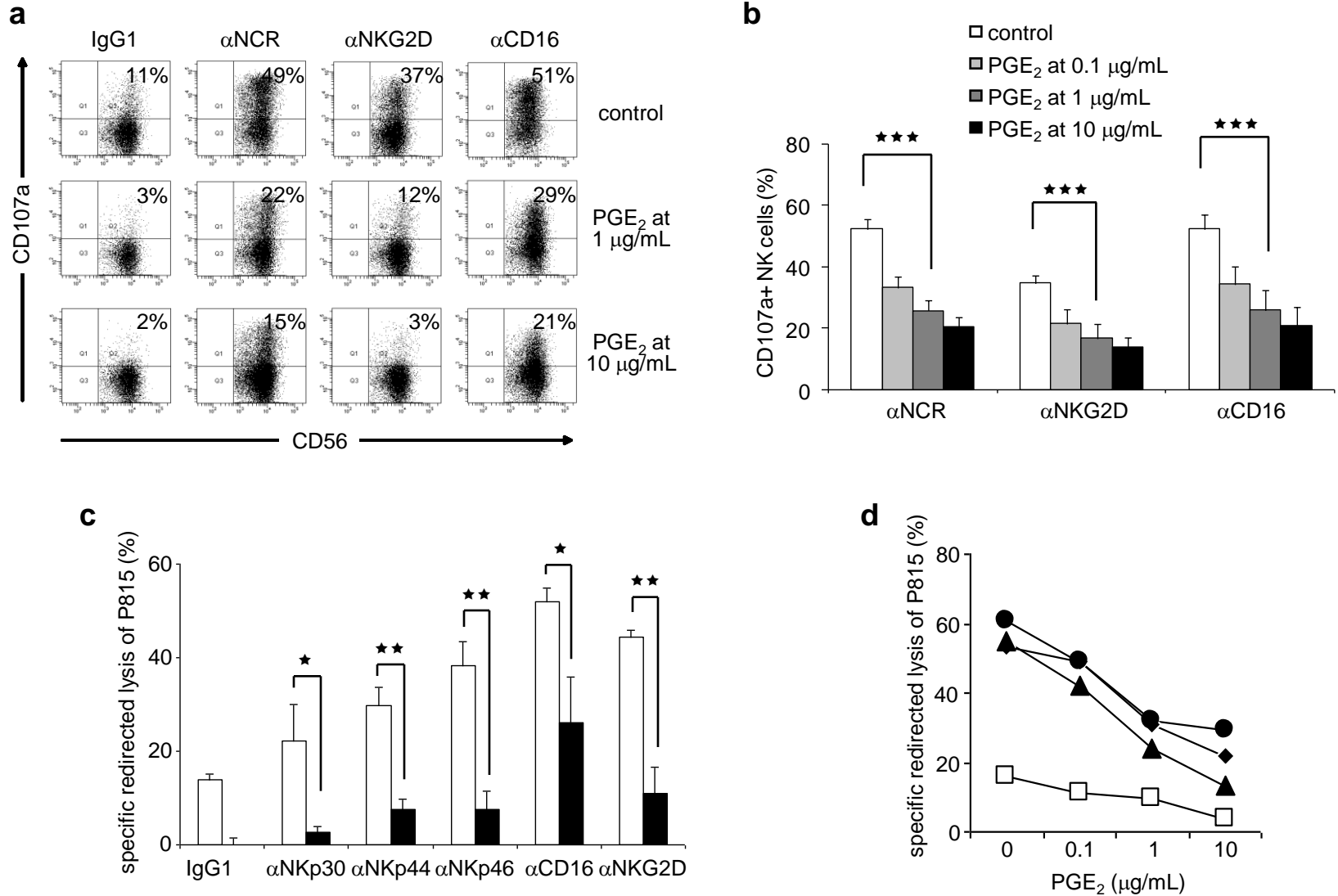


Fig. 3.

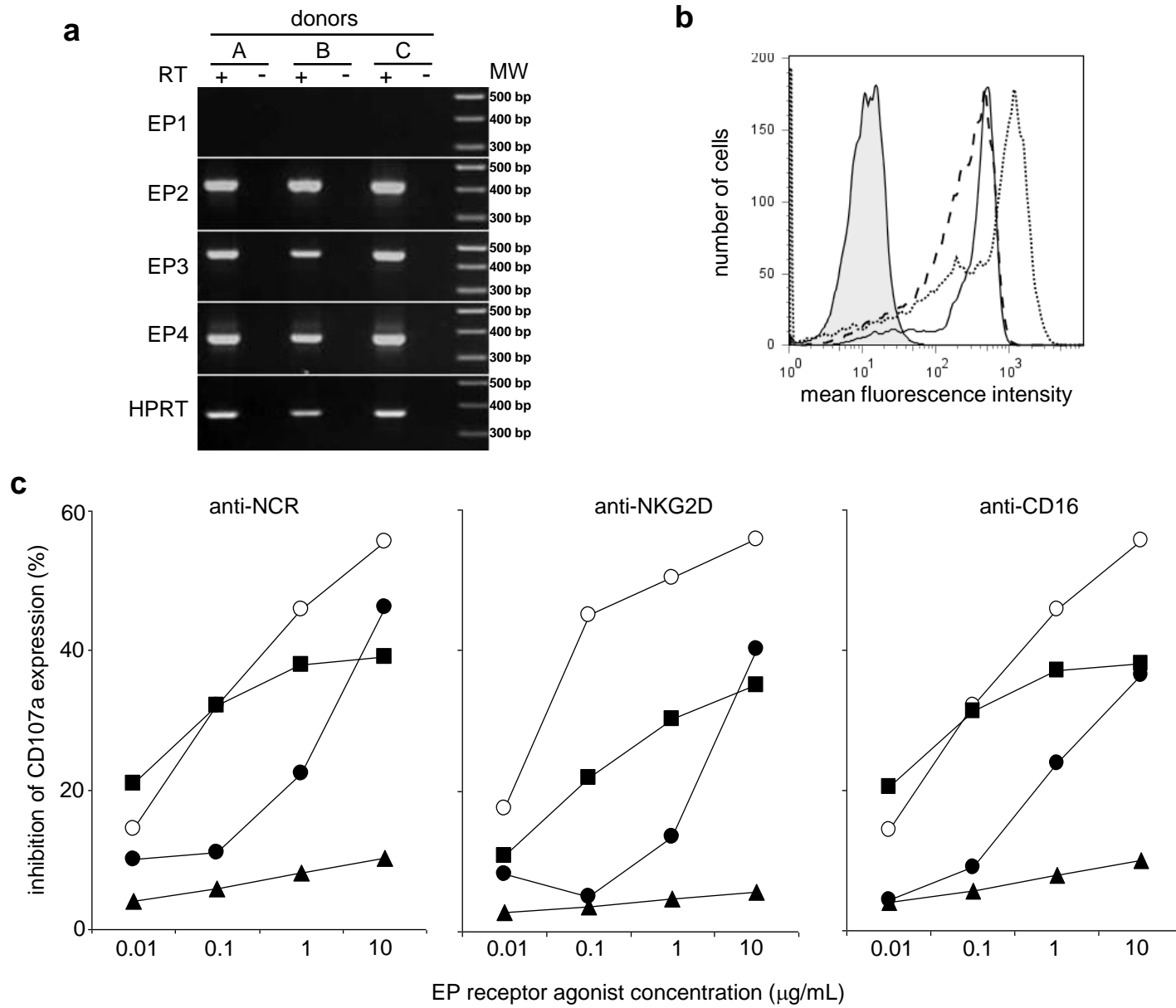


Fig. 4.

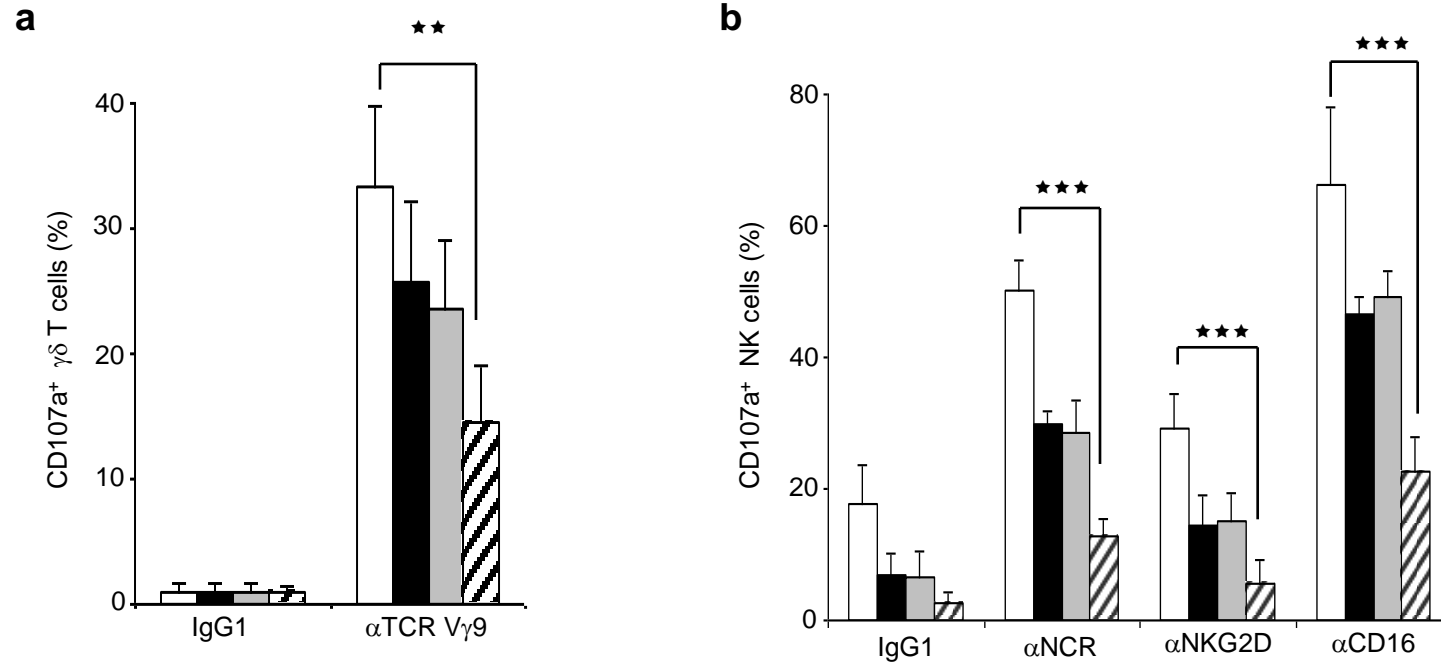
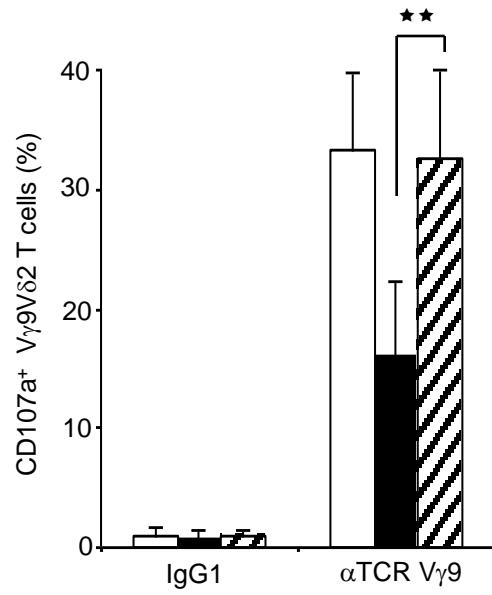


Fig. 5.

a



b

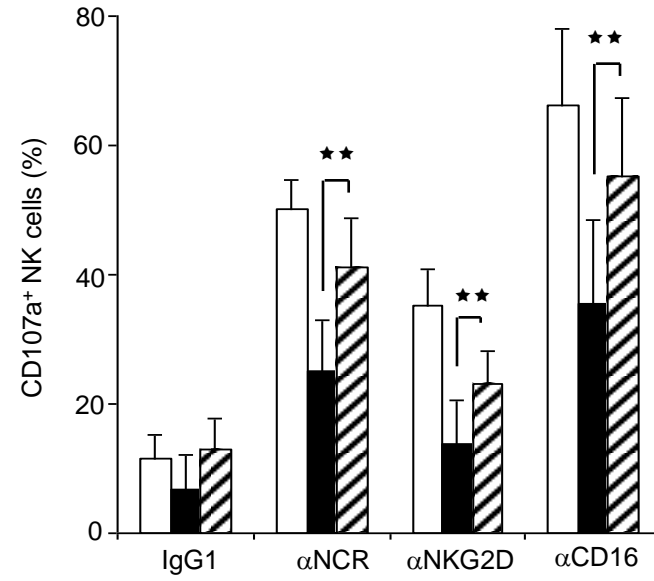
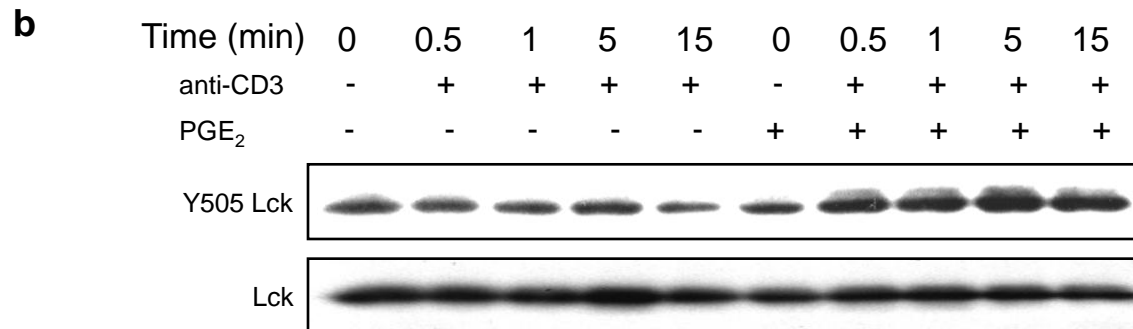
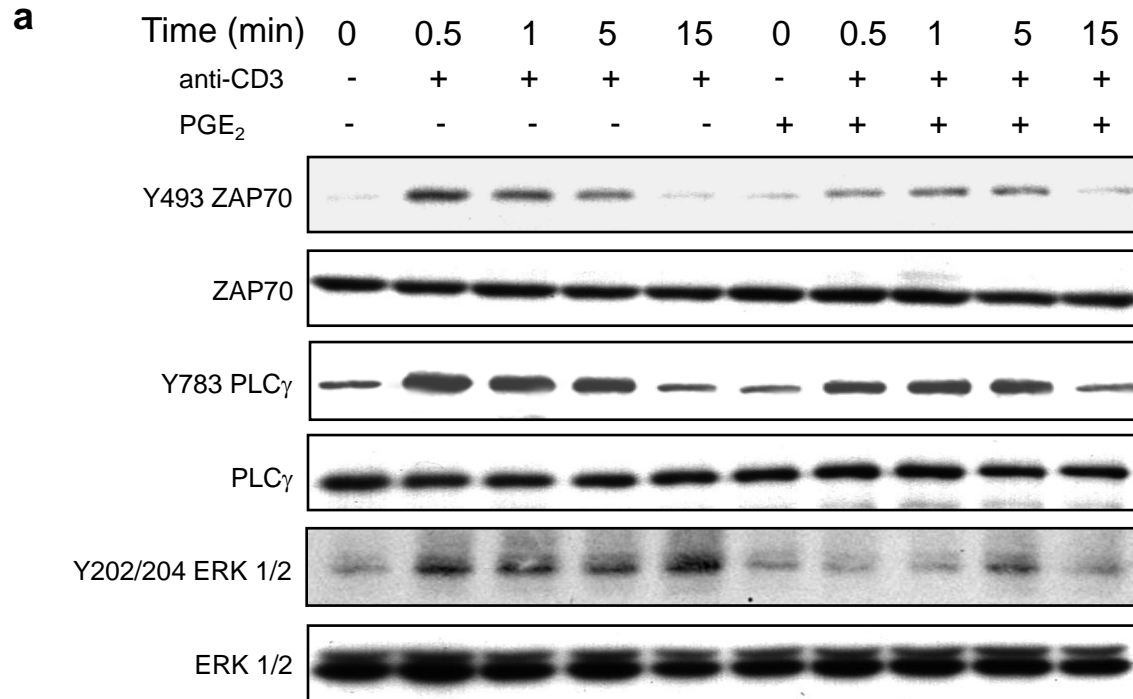


Fig. 6.



binding of PGE₂ on EP2 and EP4 receptors (b versus a) expressed by NK and V γ 9V δ 2 T cells activates cAMP-dependent PKA type I resulting in the inhibition of cytotoxicity

