



HAL
open science

Dynamics of flows with helical symmetry

Maurice Rossi, Ivan Delbende, Benjamin Piton

► **To cite this version:**

Maurice Rossi, Ivan Delbende, Benjamin Piton. Dynamics of flows with helical symmetry. EU-ROMECH Colloquium 525 - Instabilities and transition in three-dimensional flows with rotation, Jun 2011, Ecully, France. hal-00600412

HAL Id: hal-00600412

<https://hal.science/hal-00600412>

Submitted on 14 Jun 2011

HAL is a multi-disciplinary open access archive for the deposit and dissemination of scientific research documents, whether they are published or not. The documents may come from teaching and research institutions in France or abroad, or from public or private research centers.

L'archive ouverte pluridisciplinaire **HAL**, est destinée au dépôt et à la diffusion de documents scientifiques de niveau recherche, publiés ou non, émanant des établissements d'enseignement et de recherche français ou étrangers, des laboratoires publics ou privés.



DYNAMICS OF FLOWS WITH HELICAL SYMMETRY

Maurice ROSSI^{1,2}, Ivan DELBENDE^{1,3} & Benjamin PITON^{1,3}

¹*Université Pierre et Marie Curie-Paris 6 (UPMC)*

²*IJLRA-UPMC, 4 place Jussieu, case 162, 75232 Paris Cedex 05, France*

³*LIMSI-CNRS, BP 133, 91403 Orsay Cedex, France*

1 Context and objectives

Rotating devices such as propellers, wind turbines, helicopter rotors are known to develop a system of helical vortices in their wake. These structures result from the rapid roll-up of the vorticity sheet continuously generated at the trailing edge of the rotating blades. Very often, these flows display a helical symmetry, meaning that they are, at least locally, invariant through combined axial translation of distance Δz and rotation of angle $\theta = \Delta z/L$ around the same z -axis. The helix pitch $2\pi L$ is then a spatial period of the flow. In the literature, the analytical [1, 2] and numerical [3] works describing stationary helical vortices have been mostly restricted to helical vortex filaments and patches in inviscid situations with the vorticity always pointing along helical lines of pitch $2\pi L$. However, wake vortices form through the roll-up of the trailing vorticity sheet, and viscous diffusion eventually leads to continuous distributed vorticity distributions within the vortex cores, such as Gaussian. Moreover, a distribution of axial velocity may also be present, which has always been disregarded in the literature.

The objective of the current study is to simulate the viscous dynamics of helical vortex systems without the above restrictions. We present here an original DNS code [4] which solves the incompressible Navier–Stokes equations with enforced helical symmetry at fixed pitch $2\pi L$. The three-dimensional equations are reduced to a modified two-dimensional unsteady problem which can be solved via a generalised vorticity/streamfunction formulation. The code is thus able to take 3D vortex curvature and torsion effects into account while the resolution is of a 2D type, allowing for finer grids, higher Reynolds numbers and longer integration times.

2 Results

In this framework, we study the long-time (or equivalently far-wake) dynamics of systems with 2 and 3 helical vortices regularly spaced along a cylinder of radius R . Figure 1 shows the time evolution of the distance between two interacting helical vortices (when cut in a plane perpendicular to their common axis) for different values of the reduced pitch L . At high pitch ($L/R > 2$), one recovers the classical picture of pure 2D vortex merging ($L = \infty$), yet with larger evolution time scales. At smaller pitch (see $L/R = 0.8$) a quite different type of vortex merging occurs which involves neighbouring spires, as shown in figures 2 and 3. The conditions on vortex pitch and core size leading to one type of merging or to the other as well as the associated transition are investigated. Helically symmetric flows are also produced by natural instability of axisymmetric jets, wakes and trailing vortices. DNS of the nonlinear saturation of such instabilities are presented here in the case of the Batchelor vortex. We retrieve the different behaviours observed when the swirl parameter is varied [5], and we present new results concerning the saturation of viscous centered modes [6].

References

- [1] J. C. Hardin, The velocity field induced by a helical vortex filament. *Phys. Fluids* **25**(11), 1949–1952 (1982).
- [2] P. A. Kuibin and V. L. Okulov, Self-induced motion and asymptotic expansion of the velocity field in the vicinity of a helical vortex filament. *Phys. Fluids* **10**, 607–614 (1998).
- [3] D. Lucas and D. G. Dritschel, A family of helically symmetric vortex equilibria. *J. Fluid Mech.* **634**, 245–268 (2009).
- [4] I. Delbende, M. Rossi and O. Daube, DNS of flows with helical symmetry. Submitted to *Theoret. Comput. Fluid Dynamics* (2011).
- [5] I. Delbende and M. Rossi, Nonlinear evolution of a swirling jet instability. *Phys. Fluids* **17**(4), 044103 (2005).
- [6] S. Le Dizès and D. Fabre, Large-Reynolds-number asymptotic analysis of viscous centre modes in vortices. *J. Fluid Mech.* **585**, 153–180 (2007).

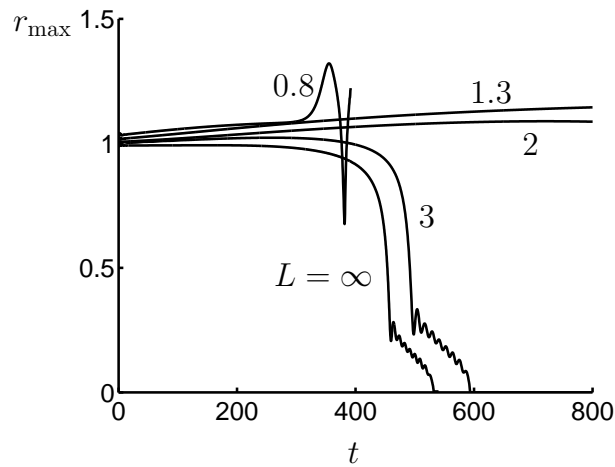


Figure 1: Merging of two helical vortices at $Re = \Gamma/\nu = 10000$ for different values of the reduced pitch L : time evolution of the distance r_{\max} of one of the vortices from the axis. Initially, the helical vortices have circulation $\Gamma = 1$, core size $a = 0.2$ and are on a cylinder of radius $R = 1$.

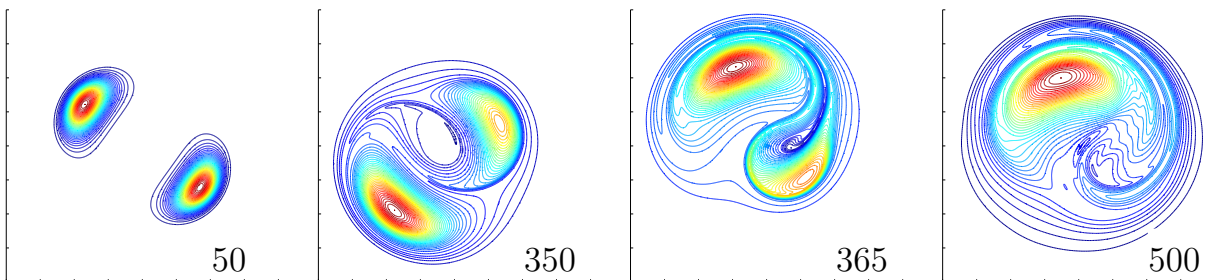


Figure 2: Merging of two helical vortices at pitch $L = 0.8$ at $Re = 10000$. Initially, the helical vortices have circulation $\Gamma = 1$, core size $a = 0.2$ and are on a cylinder of radius $R = 1$. Snapshots of the helical vorticity component for different times in a plane perpendicular to the helix z -axis.

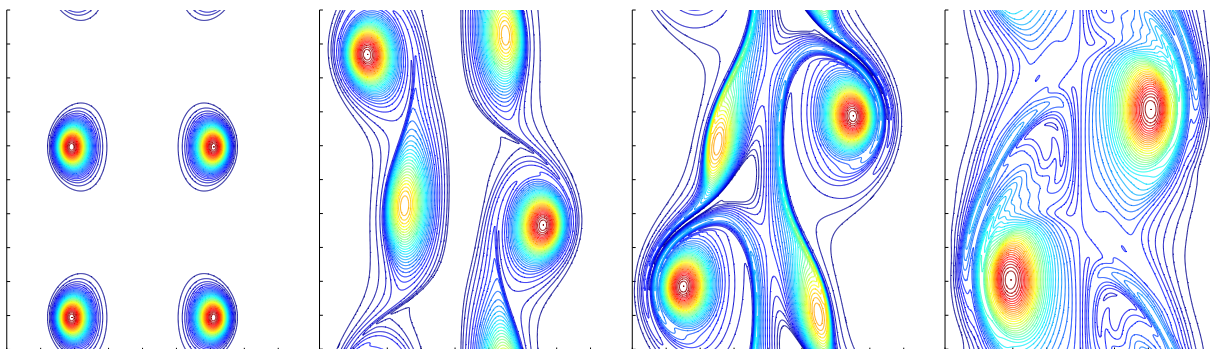


Figure 3: Same as 2 but viewed in a meridian plane.