



HAL
open science

Effect of berberine and *Berberis aetnensis* C. Presl. alkaloid extract on tissue transglutaminase in primary astroglial cell cultures

Agata Campisi, Rosaria Acquaviva, Silvana Mastrojeni, Giuseppina Raciti, Angelo Vanella, Rita de Pasquale, Salvatore Puglisi, Liliana Iauk

► To cite this version:

Agata Campisi, Rosaria Acquaviva, Silvana Mastrojeni, Giuseppina Raciti, Angelo Vanella, et al.. Effect of berberine and *Berberis aetnensis* C. Presl. alkaloid extract on tissue transglutaminase in primary astroglial cell cultures. *Phytotherapy Research*, 2010, 10.1002/ptr.3340 . hal-00599842

HAL Id: hal-00599842

<https://hal.science/hal-00599842>

Submitted on 11 Jun 2011

HAL is a multi-disciplinary open access archive for the deposit and dissemination of scientific research documents, whether they are published or not. The documents may come from teaching and research institutions in France or abroad, or from public or private research centers.

L'archive ouverte pluridisciplinaire **HAL**, est destinée au dépôt et à la diffusion de documents scientifiques de niveau recherche, publiés ou non, émanant des établissements d'enseignement et de recherche français ou étrangers, des laboratoires publics ou privés.

Effect of berberine and *Berberis aetnensis* C. Presl. alkaloid extract on tissue transglutaminase in primary astroglial cell cultures

Journal:	<i>Phytotherapy Research</i>
Manuscript ID:	PTR-10-0540.R1
Wiley - Manuscript type:	Full Paper
Date Submitted by the Author:	24-Sep-2010
Complete List of Authors:	Campisi, Agata; University of Catania Acquaviva, Rosaria; University of Catania Mastrojeni, Silvana; University of Catania Raciti, Giuseppina; University of Catania Vanella, Angelo; University of Catania De Pasquale, Rita; University of Messina Puglisi, Salvatore; University of Catania Iauk, Liliana; University of Catania, Dept. of Microbiology
Keyword:	berberine, <i>Berberis aetnensis</i> C. Presl., tissue transglutaminase, glutamate, excitotoxicity, astrocytes

SCHOLARONE™
Manuscripts

view

1
2
3
4 **Effect of berberine and *Berberis aetnensis* C. Presl. alkaloid extract on**
5
6
7 **tissue transglutaminase in primary astroglial cell cultures.**
8
9

10
11
12 **Short title: Effect of berberine and *B. aetnensis* alkaloid extract on TG2**
13
14

15
16
17 Agata Campisi¹, Rosaria Acquaviva¹, Silvana Mastrojeni², Giuseppina Raciti¹, Angelo
18
19 Vanella¹, Rita De Pasquale³, Salvatore Puglisi², Liliana Iauk^{2,*}.
20
21

22 ¹ Department of Biological Chemistry, Medical Chemistry and Molecular Biology,
23
24 University of Catania, Catania, Italy
25

26 ² Department of Microbiological and Gynecological Sciences, Microbiology Section,
27
28 University of Catania, Catania, Italy
29
30

31 ³ Pharmacobiological Department, University of Messina, Messina, Italy
32
33

34
35
36 * Prof. Liliana Iauk
37

38 Department of Microbiological and Gynecological Sciences, University of Catania
39

40
41 Via Androne, 81
42

43 I-95124 Catania, Italy
44

45 Phone: +39 095 2504707
46

47 Fax: +39 095 2504753
48

49 E-mail: iauk@unict.it
50
51
52
53
54
55
56
57
58
59
60

Abstract

Berberis aetnensis C. Presl. is a bushy-spiny shrub common on Mount Etna (Sicily, Italy), containing various alkaloids with several pharmacological properties. Herein, we assessed the effect of berberine and of the alkaloid extract of *B. aetnensis* roots on the glutamate-evoked tissue transglutaminase (TG2) up-regulation in rat astrocyte primary cultures, used as an *in vitro* model of excitotoxicity. Our findings show that the alkaloid extract of *B. aetnensis* roots consists mainly of berberine. Furthermore, berberine and the alkaloid extract of *B. aetnensis* roots were able to restore the oxidative status modified by glutamate and the levels of TG2 to control values. We found that berberine or the alkaloid extract of *B. aetnensis* roots are able to ameliorate excessive production of glutamate, protein misfolding and aggregation, mitochondrial fragmentation, and neurodegeneration. Thus, we suggest that berberine and the alkaloid extract of *B. aetnensis* roots, may represent a natural therapeutic strategy in the neuropathological conditions associated to excitotoxicity.

Keywords: berberine; *Berberis aetnensis* C. Presl.; tissue transglutaminase; glutamate; excitotoxicity; astrocytes.

INTRODUCTION

Several findings demonstrated that some plants of the genus *Berberis*, and in particular *Berberis vulgaris* and *Berberis koreana*, have beneficial effects on the neural system, suggesting a potential use for treatment of some neuronal disorders, such as epilepsy and convulsion (Fatehi et al., 2005; Tomosaka et al., 2008; Yoo et al., 2008). It has been reported that these effects are mainly due to their content in berberine, an alkaloid which possesses a wide range of biological activity (Kulkarni and Dhir, 2007; Kupeli et al., 2002; Singh and Kakkar, 2009) and is a scavenger of intracellular free radicals (Wartenberg et al., 2003). Berberine also potentiates the nerve growth factor (NGF)-induced differentiation in neural cells (Shigeta et al., 2002), and has potent neuroprotective effects against ischemic damage in cerebral ischemia/reperfusion models (Cui et al., 2009; Yoo et al., 2006; Yoo et al., 2008).

In previous researchers, we showed that *Berberis aetnensis* C. Presl., a bushy-spiny shrub which is endemic to the volcano Mount Etna (Sicily, Italy), possessed antimicrobial activity (Iauk et al., 2007; Musumeci et al., 2003). However, its alkaloid content and the use in traditional medicine are still unknown.

It has been shown that glutamate excitotoxicity, a pathological process due to overactivation of receptors for the excitatory neurotransmitter glutamate, is involved in the neuronal loss associated with many acute (stroke, ischemia) and chronic diseases (Alzhéimer's and Parkinson's diseases), mainly by activation of specific ionotropic and metabotropic receptors (Doble, 1999). In particular, in differentiated astrocytes, a brief exposure to glutamate causes cell swelling, whereas a prolonged incubation induces cell damage, resulting from calcium overload, glutathione (GSH) depletion and reactive oxygen species (ROS) production (Matute et al., 2002). Consequently, several calcium-

1
2
3
4 dependent enzymes implicated in cellular stress response, as well as tissue
5
6 transglutaminase (TG2), may be activated, causing mitochondria impairment, decrease
7
8 in ATP levels, and subsequent neuronal cell death (Sandhu et al., 2003). TG2 is a truly
9
10 multifunctional protein expressed predominately within neurons involved in many
11
12 physiological as well as pathological functions of the brain (Lesort et al., 2000). Several
13
14 lines of evidence suggest that aberrant TG2 activity, although not causative, may
15
16 contribute to the inexorable decline associated with different neurodegenerative
17
18 diseases, such as Alzheimer's and Parkinson's diseases (Gentile and Cooper, 2004).
19
20 Herein, we assessed the composition of the alkaloid extract of *Berberis aetnensis roots*
21
22 and its effect and of berberine on glutamate-induced TG2 up-regulation in primary
23
24 astroglial cell cultures, used as an *in vitro* model of excitotoxicity.
25
26
27
28
29
30
31
32

33 MATERIALS AND METHODS

34 Plant material

35
36 Roots of *B. aetnensis* C. Presl. were collected on the slopes of the volcano Mount Etna
37
38 (1800-1900 m) thanks to the Commandant of the Regional Forest Corps Detachment of
39
40 Catania-Nicolosi (Sicily, Italy), Warrant Officer Gianluca Ferlito.
41
42

43
44 A voucher specimen of the plant no. 15/03 was deposited in the herbarium of the
45
46 Pharmacobiological Department of the University of Messina (Italy).
47
48
49
50

51 Preparation and chromatographic analysis of the alkaloid extract

52
53 Air-dried, powdered roots (50 g) of *B. aetnensis* were extracted as previously reported
54
55 (Suau et al., 1998), and the alkaloids were isolated, identified and quantified by HPLC.
56
57 Gradient-elution HPLC of the alkaloid residue (4.62 g), and reference compounds
58
59
60

(berberine, berbamine, palmatine, jatrorrhizine and oxyacanthine), was carried out on a Hewlett Packard liquid chromatograph (HPLC 1100) equipped with quaternary solvent pump, an autosampler, a thermostat and a photo diode array detector. A Spherisorb S50DS1 reversed-phase column (250 × 4.6 mm i.d. with 5.0 μm particle size) with a ODS guard-column (4 × 20 mm i.d.) was used. The procedure used was the same as previously described (Yoo et al., 2006).

Cell cultures

Primary cultures of astrocytes were prepared from the neocortex of newborn albino rat brains (1–2-day-old Wistar strain) as reported (Campisi et al., 2003). Cells were maintained at 37.0±0.1°C in a 5% CO₂/95% air humidified atmosphere for 2 weeks and the medium changed every 3 days. Cells were characterized at 14 *days in vitro* (DIV) by immunofluorescent staining for Glial Fibrillary Acidic Protein (GFAP, Chemicon, Prodotti Gianni, Milan, Italy), an astroglial marker of growth, maturation and differentiation (Campisi et al., 2003). All efforts were made to minimize both the suffering and number of animals used. All experiments conformed to the guidelines of the Ethical Committee of the University of Catania, Italy.

Treatment of the cells

Astroglial cell cultures at 14 DIV were treated with different concentrations of berberine (Sigma, Milan, Italy) (10 and 20 μM) or of the alkaloid extract of *B. aetnensis* roots (5, 10 and 20 μg/ml), in absence or in presence of glutamate (500 μM) for 24 h (Campisi et al., 2004). To assess the involvement of glutamate receptors, a lot of these cultures were incubated 20 min prior to glutamate exposure with 100 μM 1-[4-

1
2
3
4 aminophenyl]-4-methyl-7,8-methylenedioxy-5H-2,3-benzodiazepine (GYKI 52466), a
5
6 well known inhibitor of α -amino-3-hydroxy-5-methyl-4-isoxazolepropionic acid
7
8 (AMPA)/kainate (KA) receptors (Campisi et al., 2003).
9
10

11 12 13 14 **Cytotoxicity assessment**

15
16 MTT test was used to evaluate cell viability (Campisi et al., 2004). To verify the
17
18 occurrence of necrotic cellular death, lactate dehydrogenase (LDH) release was
19
20 performed in the culture medium and in the cellular lysates (Campisi et al., 2004).
21
22
23
24
25

26 27 **Glutathione measurement**

28
29 Total glutathione intracellular content (GSH+GSSG), was chemically determined as
30
31 previously described (Chen et al., 2000).
32
33
34

35 36 **ROS levels**

37
38 The intracellular peroxide levels were performed according to the method by Chen et al.
39
40 (2000).
41
42
43
44

45 46 **Western Blot Analysis**

47
48 Analysis of TG2 was performed with monoclonal antimouse against the protein
49
50 (NeoMarkers, Fremont, CA) followed by incubation for 1 hr with horseradish
51
52 peroxidase–conjugated antimouse IgG (Campisi et al., 2003). TG2 expression was
53
54 visualized by chemiluminescence with an ECL kit (Amersham Pharmacia Biotech,
55
56 Milan, Italy) after autoradiography film exposure. Blots were scanned and quantified
57
58
59
60

1
2
3
4 with an AlphaImager 1200 System (Alpha Innotech, San Leandro, CA). The results
5
6 were expressed as the percentage of TG2 increase over that in the control.
7
8
9

10 11 **Statistical analysis**

12 All data were statistically analysed using one-way ANOVA, followed by Newman–
13
14 Keuls post hoc test. All values are presented as means \pm S.D. of 5 experiments. The
15
16 Student t-test was used to compare the values of each assay; differences were
17
18 considered statistically significant at $p < 0.05$.
19
20
21
22
23
24
25

26 **RESULTS AND DISCUSSION**

27
28 The alkaloid extract of *B. aetnensis* roots was characterized by HPLC analysis. We
29
30 found that the major compound in the extract was berberine (376 mg/g), and that it also
31
32 contains smaller amounts of berbamine (35 mg/g) and jatrorrhizine (33 mg/g), and even
33
34 less amounts of palmatine (12 mg/g), oxyacanthine (9 mg/g) and other alkaloids.
35
36

37 Primary rat neocortical astroglial cell cultures at 14 DIV, that is when confluent, were
38
39 characterized by immunofluorescent staining with the glial marker GFAP (Campisi et
40
41 al., 2003). About 90-95% of cells were GFAP positive, indicating that cultures were
42
43 highly enriched in astrocytes (data not shown).
44
45
46

47 Preliminary assays by MTT test and morphological observations have been made to
48
49 establish the suitable concentrations of berberine and of the alkaloid extract of *B.*
50
51 *aetnensis* roots for the cultures both in absence or in presence of 500 μ M glutamate for
52
53 24 h (Campisi et al., 2004). Berberine (10 and 20 μ M) or the *B. aetnensis* alkaloid
54
55 extract (5-20 μ g/ml) treatment did not significantly affect cellular viability (data not
56
57 shown). No significant changes in LDH release was found (data not shown). This result
58
59
60

1
2
3
4 demonstrated that berberine or the alkaloid extract of *B. aetnensis* roots did not induce
5
6 necrotic cellular death in astroglial cell cultures. Consequently, in the experiments 10
7
8 and 20 μM berberine and 5, 10 and 20 $\mu\text{g/ml}$ *B. aetnensis* alkaloid extract
9
10 concentrations were chosen.
11
12

13
14 In order to verify if berberine or the alkaloid extract of *B. aetnensis* roots were able to
15
16 restore the oxidative status modified by glutamate, the GSH levels and the intracellular
17
18 ROS production were evaluated. Glutamate treatment induced a significant increase in
19
20 GSH depletion (Fig. 1) and ROS levels (Fig. 2) when compared with the respective
21
22 untreated ones used as a control. In cultures primed with GYKI 52466, a selective
23
24 inhibitor of AMPA/KA receptors, glutamate effects on GSH and ROS levels were
25
26 diminished (Figs. 1, 2). The present data indicate that stimulation of cultured astrocytes
27
28 with high concentrations of glutamate results in oxidative stress, as indicated by the
29
30 reduction of GSH levels and overproduction of intracellular ROS levels. The altered
31
32 redox status is consistent with a transporter-mediated toxicity evoked by glutamate
33
34 (Matute et al., 2002).
35
36
37
38

39
40 Berberine and the alkaloid extract of *B. aetnensis* roots were able to counteract the
41
42 effect of glutamate, restoring, in a dose-dependent manner, GSH and ROS levels similar
43
44 to control values (Figs. 1, 2). The effect of the *B. aetnensis* extract was slightly greater
45
46 compared to berberine. Furthermore, 20 μM berberine and 20 $\mu\text{g/ml}$ extract, which
47
48 contain a very similar amount of berberine, showed values similar to those obtained
49
50 after priming with GYKI 52466, followed by the addition of glutamate (Figs. 1, 2).
51
52

53
54 We assessed the effects of berberine and the alkaloid extract of *B. aetnensis* roots on
55
56 TG2 expression in 14 DIV astroglial cell cultures in the absence or in the presence of
57
58 500 μM glutamate. TG2 expression was evaluated by Western blot analysis (Fig. 3).
59
60

1
2
3
4 Immunoblots of control cultures showed low levels of TG2. Glutamate treatment
5 induced a marked increase in TG2 protein levels (Fig. 3a). Densitometric analysis of
6
7 TG2 expression confirmed that the protein was up-regulated by glutamate injury
8
9 (Campisi et al., 2004) (Fig. 3b).

10
11
12
13 The pre-incubation with 10 and 20 μ M berberine was able to counteract glutamate-
14
15 dependent increase in TG2 expression (Fig. 3). In particular, we observed that the levels
16
17 of protein, at 20 μ M, were similar to untreated control values. When cultures were
18
19 primed with *B. aetnensis* alkaloid extract at all concentrations (5, 10, 20 μ g/ml)
20
21 followed by the addition of glutamate, there was a dramatic reduction in the glutamate-
22
23 induced increase in TG2 levels (Fig. 3). Its effects appeared slightly greater than that of
24
25 berberine (Fig. 3).
26
27
28
29

30
31 In our experimental model, we demonstrated that the pre-incubation of primary rat
32
33 astroglial cell cultures with berberine or the alkaloid extract of *B. aetnensis* roots, were
34
35 able to counteract, in a dose dependent manner, the effects of glutamate restoring the
36
37 levels of TG2 to control values. The causative effect of oxidative stress on the rises in
38
39 TG2 expression in primary astroglial cell cultures was confirmed by the inhibition of
40
41 ROS production and intracellular GSH depletion through addition of berberine or the
42
43 alkaloid extract of *B. aetnensis* roots. In particular, we found, for the first time, that the
44
45 extract was able to counteract glutamate-dependent increase in TG2 expression also at
46
47 the lower concentration (5 μ g/ml) (Fig. 3).
48
49
50

51
52 The protective effect against glutamate toxicity of berberine and the alkaloid extract of
53
54 *B. aetnensis* roots appeared stronger than that of the synthetic antioxidant compounds
55
56 used in our previous researches (Campisi et al., 2004).
57
58
59
60

1
2
3
4
5 These results are in agreement with other recent findings demonstrating that berberine,
6
7 exerts neuroprotective effect against ischemic damage in mouse organotypic
8
9 hippocampal slice cultures stimulated by NMDA (Cui et al., 2009), attenuates transient
10
11 ischemia-induced up-regulation of type 1 NMDA receptor expression, and reduces
12
13 calcium influx in the hippocampus of gerbils (Yoo et al., 2008). Furthermore, it has
14
15 been demonstrated that berberine exhibits neuroprotective action against *in vitro*
16
17 ischemia induced neuronal damage in the hippocampus at least in part by the
18
19 suppression of Bcl-2 phosphorylation (Cui et al., 2009). In addition, berberine decreased
20
21 ROS levels and inhibited angiogenesis in embryoid bodies, indicating that the
22
23 compound was acting as a scavenger of intracellular free radicals (Wartenberg et al.,
24
25 2003). Berberine was also able to block the generation of ROS in hypoxia-treated
26
27 mesenchymal stem cells exerting potent antiapoptotic activities by inhibiting the
28
29 generation of ROS (Zhang et al., 2009). Recently, it has also been demonstrated that
30
31 berberine exerted antidepressant-like effect modulating brain biogenic amines
32
33 (norepinephrine, serotonin or dopamine) and further, the antidepressant-like effect of
34
35 berberine in the forced-swim test involved an interaction with the L-arginine-NO-cGMP
36
37 pathway (Kulkarni and Dhir, 2007).
38
39
40
41
42
43

44 Thus, the most significant findings of our study are that berberine and the alkaloid
45
46 extract of *B. aetnensis* roots were able to counteract the effects of glutamate restoring
47
48 the levels of TG2 to control values and also the intracellular oxidative status modified
49
50 by neurotransmitter. Furthermore, we found that berberine represents the major alkaloid
51
52 of the alkaloid extract of *B. aetnensis* roots. This finding is in agreement with other
53
54 reports on the alkaloids from the roots of *Berberis* species (Ivanovska and Philipov,
55
56 1996; Yeşilada and Küpeli, 2002).
57
58
59
60

1
2
3
4 It is possible to assume that berberine or the alkaloid extract of *B. aetnensis* roots are
5
6 able to counteract glutamate uptake-induced impairment of cystine/glutamate antiporter
7
8 leads to depletion of GSH content and biochemical alterations, resulting in the delayed
9
10 toxic effect for primary astrocyte cultures (Chen et al., 2000; Kato et al., 1992).
11
12

13
14 Thus, we suggest that berberine and the alkaloid extract of *B. aetnensis* roots, which
15
16 mostly contains berberine, ameliorating the excessive production of glutamate, protein
17
18 misfolding and aggregation, mitochondrial fragmentation, may represent a natural
19
20 therapeutic strategy in the neuropathological conditions associated to excitotoxicity.
21
22

23
24 However, other studies are now in progress to better clarify the molecular mechanisms
25
26 of berberine and the alkaloid extract of *B. aetnensis* roots, and to provide other
27
28 information on their regulatory mechanisms of TG2 gene transcription evoked by
29
30 excitotoxicity.
31
32
33
34
35
36
37
38
39
40
41
42
43
44
45
46
47
48
49
50
51
52
53
54
55
56
57
58
59
60

References

- Campisi A, Caccamo D, Raciti G, Cannavò G, Macaione V, Currò M, Macaione S, Vanella A, Ientile R. 2003. Glutamate-induced increases in transglutaminase activity in primary cultures of astroglial cells. *Brain Res* **978**: 24-30.
- Campisi A, Caccamo D, Li Volti G, Currò M, Parisi G, Avola R, Vanella A, Ientile R. 2004. Glutamate-evoked redox state alterations are involved in tissue transglutaminase upregulation in primary astrocyte cultures. *FEBS Lett* **578**: 80-84.
- Chen CJ, Liao SL, Kuo JS. 2000. Gliotoxic action of glutamate on cultured astrocytes. *J Neurochem* **75**: 1557-1565.
- Cui HS, Matsumoto K, Murakami Y, Hori H, Zhao Q, Obi R. 2009. Berberine exerts neuroprotective actions against *in vitro* ischemia-induced neuronal cell damage in organotypic hippocampal slice cultures: involvement of B-cell lymphoma 2 phosphorylation suppression. *Biol Pharm Bull* **32**: 79-85.
- Doble A. 1999. The role of excitotoxicity in neurodegenerative disease: implications for therapy. *Pharmacol Ther* **81**: 163-221.
- Fatehi M, Saleh TM, Fatehi-Hassanabad Z, Farrokhfal K, Jafarzadeh M, Davodi S. 2005. A pharmacological study on *Berberis vulgaris* fruit extract. *J Ethnopharmacol* **102**: 46-52.
- Gentile V, Cooper AJ. 2004. Transglutaminase and neurodegenerative diseases. *Curr Drug Targets CNS Neurol Disord* **3**: 99-104.
- Iauk L, Costanzo R, Caccamo F, Rapisarda A, Musumeci R, Milazzo I, Blandino G. 2007. Activity of *Berberis aetnensis* root extracts on *Candida* strains. *Fitoterapia* **78**: 159-161.

1
2
3
4 Ivanovska N, Philipov S. 1996. Study of the anti-inflammatory action of *Berberis*
5 *vulgaris* root extract, alkaloid fractions and pure alkaloids. *Int J Immunopharm* **18**: 553-
6
7 561.
8
9

10
11 Kato S, Negishi K, Mawatari K, Kuo CH. 1992. A mechanism for glutamate toxicity in
12 the C6 glioma cells involving inhibition of cystine uptake leading to glutathione
13
14 depletion. *Neuroscience* **48**: 903-914.
15
16

17
18 Kulkarni SK, Dhir A. 2007. Possible involvement of L-arginine-nitric oxide (NO)-
19
20 cyclic guanosine monophosphate (cGMP) signaling pathway in the antidepressant
21
22 activity of berberine chloride. *Eur J Pharmacol* **569**: 77-83.
23
24

25
26 Kupeli E, Rosar M, Yesilada E, Husnu K, Baser C. 2002. A comparative study on the
27
28 anti-inflammatory, antinociceptive and antipyretic effects of isoquinoline alkaloids from
29
30 the roots of Turkish *Berberis* species. *Life Sci* **72**: 645-657.
31
32

33
34 Lesort M, Tucholski J, Miller ML, Johnson GV. 2000. Tissue transglutaminase: a
35
36 possible role in neurodegenerative diseases. *Prog Neurobiol* **61**: 439-463.
37

38
39 Matute C, Alberdi E, Ibarretxe G, Sánchez-Gómez MW. 2002. Excitotoxicity in glial
40
41 cells. *Eur J Pharmacol* **447**: 239-246.
42

43
44 Musumeci R, Speciale A, Costanzo R, Annino A, Ragusa S, Rapisarda A, Pappalardo
45
46 MS, Iauk L. 2003. *Berberis aetnensis* C. Presl. extracts: antimicrobial properties and
47
48 interaction with ciprofloxacin. *Int J Antimicrob Agents* **22**: 48-53.
49

50
51 Sandhu JK, Pandey S, Ribocco-Lutkiewicz M, Monette R, Borowy-Borowski H,
52
53 Walker PR, Sikorska M. 2003. Molecular mechanisms of glutamate neurotoxicity in
54
55 mixed cultures of NT2-derived neurons and astrocytes: protective effects of coenzyme
56
57 Q10. *J Neurosci Res* **72**: 691-703.
58
59
60

1
2
3
4 Shigeta K, Ootaki K, Tatemoto H, Nakanishi T, Inada A, Muto N. 2002. Potentiation of
5 nerve growth factor-induced neurite outgrowth in PC12 cells by a *Coptidis Rhizoma*
6 extract and protoberberine alkaloids. *Biosci Biotechnol Biochem* **66**: 2491-2494.
7
8

9
10
11 Singh J, Kakkar P. 2009. Antihyperglycemic and antioxidant effect of *Berberis aristata*
12 root extract and its role in regulating carbohydrate metabolism in diabetic rats. *J*
13 *Ethnopharmacol* **123**: 22-26.
14
15

16
17
18 Suau R, Rico R, López-Romero JM, Nájera F, Cuevas A. 1998. Isoquinoline alkaloids
19 from *Berberis vulgaris* subsp. *australis*. *Phytochem* **49**: 2545-2549.
20
21

22
23 Tomosaka H, Chin YW, Salim AA, Keller WJ, Chai H, Kinghorn AD. 2008.
24 Antioxidant and cytoprotective compounds from *Berberis vulgaris* (barberry).
25
26 *Phytother Res* **22**: 979-981.
27
28

29
30 Wartenberg M, Budde P, De Mareés M, Grünheck F, Tsang SY, Huang Y, Chen ZY,
31 Hescheler J, Sauer H. 2003. Inhibition of tumor-induced angiogenesis and matrix-
32 metalloproteinase expression in confrontation cultures of embryoid bodies and tumor
33 spheroids by plant ingredients used in traditional chinese medicine. *Lab Invest* **83**: 87-
34
35
36
37
38
39
40
41 98.

42 Yeşilada E, Küpeli E. 2002. *Berberis crataegina* DC. root exhibits potent anti-
43 inflammatory, analgesic and febrifuge effects in mice and rats. *J Ethnopharmacol* **79**:
44
45
46
47
48 237-248.

49 Yoo KY, Hwang IK, Lim BO, Kang TC, Kim DW, Kim SM, Lee HY, Kim JD, Won
50 MH. 2006. Berberry extract reduces neuronal damage and N-methyl-D-aspartate
51 receptor 1 immunoreactivity in the gerbil hippocampus after transient forebrain
52
53
54
55
56
57
58
59
60 ischemia. *Biol Pharm Bull* **29**: 623-628.

- 1
2
3
4 Yoo KY, Hwang IK, Kim JD, Kang IJ, Park J, Yi JS, Kim JK, Bae YS, Won MH. 2008.
5
6 Antiinflammatory effect of the ethanol extract of *Berberis koreana* in a gerbil model of
7
8 cerebral ischemia/reperfusion. *Phytother Res* **22**: 1527-1532.
9
10
11 Zhang W, Su X, Gao Y, Sun B, Yu Y, Wang X, Zhang F. 2009. Berberine protects
12
13 mesenchymal stem cells against hypoxia-induced apoptosis *in vitro*. *Biol Pharm Bull*
14
15
16 **32**: 1335-1342.
17
18
19
20
21
22
23
24
25
26
27
28
29
30
31
32
33
34
35
36
37
38
39
40
41
42
43
44
45
46
47
48
49
50
51
52
53
54
55
56
57
58
59
60

For Peer Review

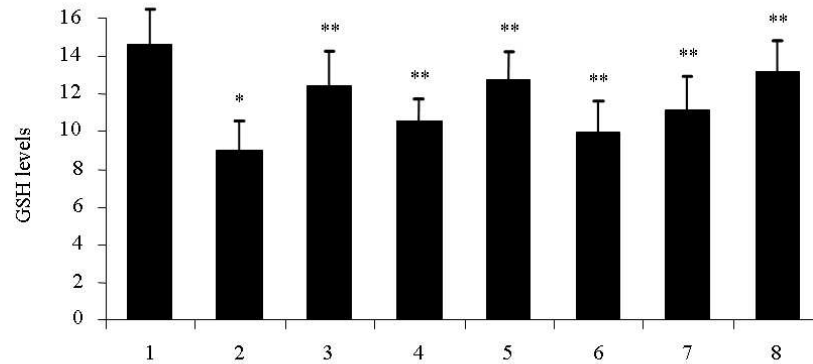


Fig. 1 - GSH levels in primary rat astroglial cell cultures at 14 DIV exposed to glutamate (500 μ M for 24 h) in presence or absence of GYKI 52466 or of berberine (BER, 10 and 20 μ M)/B. aetnensis alkaloid extract (BAE, 5-20 μ g/ml). GSH levels are expressed as GSH nmol/mg protein.

1: control; 2: glutamate; 3: glutamate + 10 μ M GYKI 52466; 4: glutamate + 10 μ M BER; 5: glutamate + 20 μ M BER; 6: glutamate + 5 μ g/ml BAE; 7: glutamate + 10 μ g/ml BAE; 8: glutamate + 20 μ g/ml BAE.

* $p < 0.05$ vs. control. ** $p < 0.05$ vs. glutamate.

83x59mm (300 x 300 DPI)

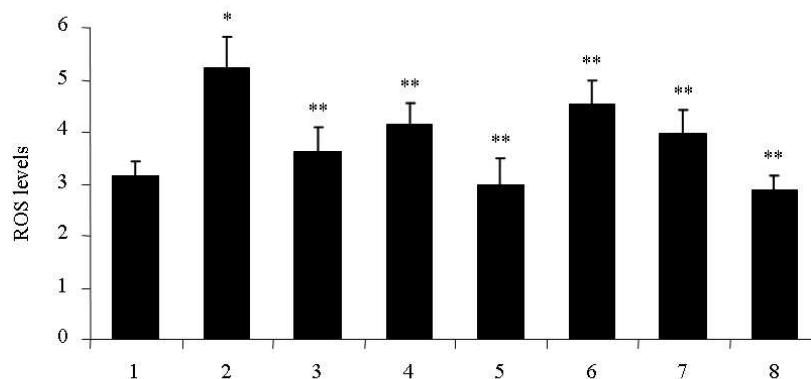
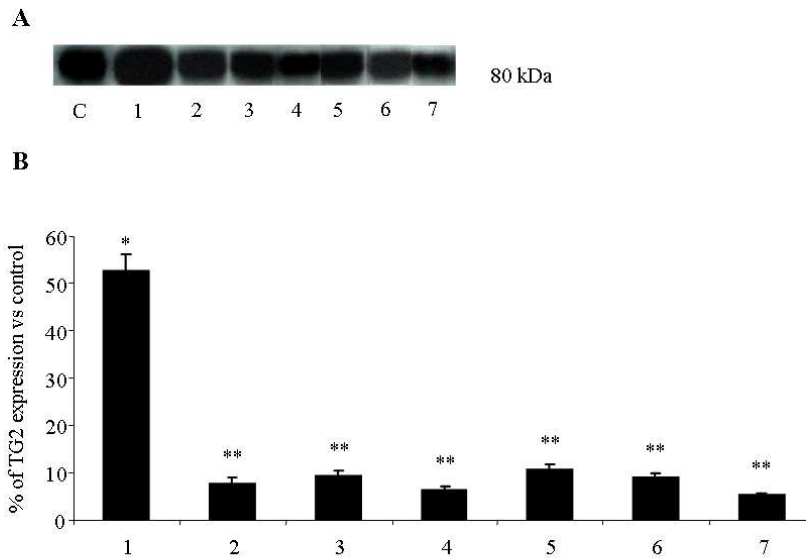


Fig. 2 - ROS levels in primary rat astroglial cell cultures at 14 DIV exposed to glutamate (500 μ M for 24 h) in presence or absence of GYKI 52466 or of berberine (BER, 10 and 20 μ M)/*B. aetnensis* alkaloid extract (BAE, 5-20 μ g/ml). ROS levels are expressed as nmoles of dichlorofluoresceine produced/30 min/mg protein.

1: control; 2: glutamate; 3: glutamate + 10 μ M GYKI 52466; 4: glutamate + 10 μ M BER; 5: glutamate + 20 μ M BER; 6: glutamate + 5 μ g/ml BAE; 7: glutamate + 10 μ g/ml BAE; 8: glutamate + 20 μ g/ml BAE.

* $p < 0.05$ vs. control. ** $p < 0.05$ vs. glutamate.
83x59mm (300 x 300 DPI)



32 Fig. 3 - Representative immunoblot (A) and densitometric (B) analyses of TG2 expression in 14 DIV
33 primary rat neocortical astroglial cell cultures exposed to glutamate (500 μ M) for 24 h that show the
34 effect of exposure to berberine (BER, 10 and 20 μ M)/B. aetnensis alkaloid extract (BAE, 5-20
35 μ g/ml). The results of densitometric analysis are expressed as the percentage of increase in TG2
36 over that in the control.

37 1: glutamate; 2: glutamate + 10 μ M GYKI 52466; 3: glutamate + 10 μ M BER; 4: glutamate + 20
38 μ M BER; 5: glutamate + 5 μ g/ml BAE; 6: glutamate + 10 μ g/ml BAE; 7: glutamate + 20 μ g/ml
39 BAE.

40 * p < 0.05 vs. control. ** p < 0.05 vs. glutamate.

41 83x59mm (300 x 300 DPI)

