



**HAL**  
open science

## Assessment of liver fibrosis before and after antiviral therapy by different serum marker panels in patients with chronic hepatitis C

Stella M Martinez, Guillermo Fernández-Varo, Patricia González, Ellen Sampson, Miguel Bruguera, Miguel Navasa, Wladimiro Jiménez, Josem Sanchez-Tapias, Xavier Forns

### ► To cite this version:

Stella M Martinez, Guillermo Fernández-Varo, Patricia González, Ellen Sampson, Miguel Bruguera, et al.. Assessment of liver fibrosis before and after antiviral therapy by different serum marker panels in patients with chronic hepatitis C. *Alimentary Pharmacology and Therapeutics*, 2010, 33 (1), pp.138. 10.1111/j.1365-2036.2010.04500.x . hal-00599491

**HAL Id: hal-00599491**

**<https://hal.science/hal-00599491>**

Submitted on 10 Jun 2011

**HAL** is a multi-disciplinary open access archive for the deposit and dissemination of scientific research documents, whether they are published or not. The documents may come from teaching and research institutions in France or abroad, or from public or private research centers.

L'archive ouverte pluridisciplinaire **HAL**, est destinée au dépôt et à la diffusion de documents scientifiques de niveau recherche, publiés ou non, émanant des établissements d'enseignement et de recherche français ou étrangers, des laboratoires publics ou privés.



**Assessment of liver fibrosis before and after antiviral therapy by different serum marker panels in patients with chronic hepatitis C**

Journal:	<i>Alimentary Pharmacology &amp; Therapeutics</i>
Manuscript ID:	APT-0541-2010.R1
Wiley - Manuscript type:	Original Scientific Paper
Date Submitted by the Author:	07-Sep-2010
Complete List of Authors:	Martinez, Stella; Hospital Clínic, Liver Unit Fernández-Varo, Guillermo; Hospital Clínic, Biochemistry and Molecular Genetics Department González, Patricia; Hospital Clínic, Liver Unit Sampson, Ellen; Siemens, Siemens Healthcare Diagnostics Bruguera, Miguel; Hospital Clínic, Liver Unit Navasa, Miguel; Hospital Clínic, Liver Unit Jiménez, Wladimiro; Hospital Clínic, Biochemistry and Molecular Genetics Department Sanchez-Tapias, JoseM; Hospital Clinic i Provincial, Hepatology; Hospital Clínic, Liver Unit Forns, Xavier; Hospital Clínic, Liver Unit
Keywords:	Cirrhosis < Hepatology, Hepatitis C < Hepatology, Liver fibrosis < Hepatology, Liver biopsy < Hepatology



1  
2  
3  
4  
5  
6 Assessment of liver fibrosis before and after antiviral therapy by different  
7  
8  
9 serum marker panels in patients with chronic hepatitis C  
10  
11  
12

13  
14 **Running title: Serum marker panels in chronic hepatitis C**  
15

16 S. M. Martinez<sup>1</sup>, G. Fernández-Varo<sup>2</sup>, P. González<sup>1</sup>, E. Sampson<sup>3</sup>, M Bruguera<sup>1</sup>, M.

17  
18 Navasa<sup>1</sup>, W. Jiménez<sup>2</sup>, J. M. Sánchez-Tapias<sup>1</sup>, X. Forns<sup>1</sup>  
19

20  
21 <sup>1</sup>Liver Unit and <sup>2</sup>Biochemistry and Molecular Genetics Department, Hospital Clinic,  
22  
23 IDIBAPS and Ciberehd. Barcelona, Spain. <sup>3</sup>Siemens Healthcare Diagnostics, NY, USA  
24  
25  
26  
27

28 Stella M. Martinez: smmartin@clinic.ub.es  
29

30 Guillermo Fernández-Varo: guillermo.fernandez@ciberhed.org  
31

32 Patricia González: pgonzale@clinic.ub.es  
33

34 Ellen Sampson: ellen.sampson@siemens.com  
35

36 Miguel Bruguera: bruguera@clinic.ub.es  
37

38 Miguel Navasa: mnavasa@clinic.ub.es  
39

40 Wladimiro Jiménez: wjimenez@clinic.ub.es  
41

42 José M. Sánchez-Tapias: sanchez@clinic.ub.es  
43

44 Xavier Forns: xforns@clinic.ub.es  
45  
46  
47  
48  
49  
50  
51  
52  
53

54 **Contact information:**  
55

56 Xavier Forns, Liver Unit, Hospital Clinic, Villarroel 170, 08036 Barcelona, Spain. E-mail:  
57

58 xforns@clinic.ub.es; fax: (34) 93 451 55 22  
59  
60

**ABSTRACT**

**Background/Aims:** Liver biopsy is the reference standard to assess liver fibrosis in chronic hepatitis C (CHC). We validated and compared the diagnostic performance of noninvasive tests for prediction of liver fibrosis severity and assessed changes in extracellular matrix (ECM) markers after antiviral treatment. **Methods:** The performance of Forns' score, APRI, FIB-4 index, and ELF (Enhanced Liver Fibrosis) score was validated in 340 patients who underwent antiviral therapy. These scores were determined 24 weeks after treatment in 161 patients. **Results:** Forns' score, APRI, FIB-4 and ELF score showed comparable diagnostic accuracies for significant fibrosis (AUROC 0.83, 0.83, 0.85 and 0.81, respectively). To identify cirrhosis, FIB-4 index showed a significantly better performance over APRI and ELF score (AUROC 0.89 vs. 0.83 and 0.82, respectively). ELF score decreased significantly in patients with sustained virologic response (SVR) ( $p < 0.0001$ ) but remained unchanged in non-responders. Non-1 HCV genotype, baseline lower HCV RNA, glucose, hyaluronic acid and higher cholesterol levels were independently associated with SVR. **Conclusions:** Simple panel markers and ELF score are accurate at identifying significant fibrosis and cirrhosis in CHC. A decrease in ELF score after antiviral treatment reflects the impact of viral clearance in hepatic ECM and probably in the improvement of liver fibrosis.

**Keywords:** cirrhosis, ELF score, extracellular matrix markers, Forns' score, significant fibrosis

## Introduction

An estimated 170 million persons worldwide are chronically infected with hepatitis C virus (HCV) (1), a leading cause of chronic liver disease, which may eventually lead to cirrhosis and end-stage liver disease (2).

Current antiviral treatment for CHC has significant side effects and has a far from optimal efficacy, particularly in patients with genotype 1 (3, 4). Thus, identification of significant liver fibrosis stage is essential to establish the timing of antiviral treatment (5). Furthermore, the diagnosis of cirrhosis not only establishes the need for antiviral treatment but is crucial for identifying those patients in whom screening for gastroesophageal varices and hepatocellular carcinoma is mandatory. Finally, assessment of the effect of antiviral treatment on liver fibrosis is another desirable end point for evaluation of the efficacy of therapy. Liver biopsy is classically considered the reference standard to assess the extent of fibrosis, though it is associated with risk of complications and has limitations due to observer variability and sampling error (6-8). Thus, several routine laboratory tests combined in scores and indices such as Forns' score, APRI index and FIB-4 index, have been developed and validated as useful noninvasive and inexpensive tools to accurately detect significant fibrosis or cirrhosis in clinical practice (9-12). Furthermore, a panel of 5 markers ( $\alpha$ 2-macroglobulin, haptoglobin, apolipoprotein A1, gammaglutamyl transpeptidase and total bilirubin), that is commercialized as FibroTest, has also been validated in the detection of fibrosis and in the evaluation of response to interferon based therapy (13, 14).

More recently, transient elastography has become a useful, rapid and reproducible novel method to assess liver fibrosis through the measurement of liver stiffness. It has been shown to have good diagnostic performance when combined with FibroTest (15, 16).

1  
2  
3 In addition, some serum markers that reflect the dynamics of fibrosis, involving extracellular  
4 matrix (ECM) synthesis or degradation mainly by hepatic stellate cells (HSC) (17), such as  
5 aminoterminal propeptide of type III procollagen (PIIINP), hyaluronic acid (HA), tissue  
6 inhibitor of matrix metalloproteinase type 1 (TIMP-1) and YKL-40, have been studied  
7 individually or in combination in the detection of the severity and progression of hepatic  
8 fibrosis and in the follow-up of changes in relation to antiviral treatment (18-22). A panel of  
9 such markers (PIIINP, HA and TIMP-1) combined with age, originally reported as the  
10 European Liver Fibrosis (OELF) score (23), was shown to be specific and sensitive in the  
11 evaluation of liver fibrosis in chronic liver diseases of different etiology (24-26). **A**  
12 **longitudinal assessment of this validated predictive score (ELF) after antiviral**  
13 **treatment is lacking in the literature. Since the markers included in this score are**  
14 **directly related to the fibrogenesis process, the evaluation in this setting could confirm**  
15 **their ability in monitoring liver fibrosis regression.**

16  
17  
18  
19  
20  
21  
22  
23  
24  
25  
26  
27  
28  
29  
30  
31  
32  
33  
34 The aims of the present study were (1) to validate and compare the diagnostic performance  
35 of several noninvasive tests in the prediction of liver fibrosis severity in a large cohort of  
36 patients with CHC from a single center, and (2) to assess the relationship between changes in  
37 serum ECM markers and virologic response to antiviral therapy.

## 38 39 40 41 42 43 44 45 **Patients and methods**

### 46 47 **Patient population**

48  
49  
50 **This is a cohort study that included 340 consecutive patients with CHC who underwent**  
51 **antiviral treatment** at our institution between August 2001 and November 2007. **The same**  
52 **protocol (including number of visits, blood tests and serum sampling) was used during**  
53 **the study period.** The diagnosis of CHC was established by the presence of hepatitis C virus  
54 (HCV) RNA using polymerase chain reaction assays. All patients underwent a pretreatment  
55  
56  
57  
58  
59  
60

1  
2  
3 liver biopsy within 6 months prior to the initiation of therapy. Patients with human  
4 immunodeficiency virus or hepatitis B virus co-infection, or with other causes of chronic  
5 liver disease were not included.  
6  
7

8  
9  
10 Antiviral treatment was the standard of care, with weekly pegylated interferon alfa-2a  
11 (180ug) or alfa-2b (1.5 ug/kg) plus ribavirin (0.8-1.2 g daily) for 24 or 48 weeks, according  
12 to HCV genotype. The use of hematopoietic growth factors, epoetin alfa or darbepoetin and  
13 filgrastim, was allowed to treat anemia or neutropenia, respectively. Sustained virologic  
14 response (SVR) was defined by undetectable serum HCV RNA by qualitative polymerase  
15 chain reaction assay (Cobas Amplicor, HCV Roche, v 2.0, detection limit 50 IU/mL) at 24  
16 weeks after the end of therapy.  
17  
18  
19

20 All patients provided written informed consent to data handling according to a protocol  
21 approved by the ethical committee of our Institution.  
22  
23  
24  
25  
26

### 27 **Liver Histology**

28  
29 Percutaneous liver biopsies were performed under local anesthesia and ultrasound guidance  
30 with a Tru-Cut 14 gauge needle (Angiomed, Bard, Karlsruhe, Germany) by expert  
31 radiologists. Specimens were fixed in formalin, embedded in paraffin and stained with  
32 hematoxylin-eosin and Masson's trichrome. **A minimum length of 10 mm and the  
33 presence of 6 portal tracts were required for diagnosis.** Histological grade and stage  
34 were determined according to METAVIR scoring system (27) by the same pathologist  
35 (M.B.), **who was blinded for patients' data.** Liver fibrosis was considered significant when  
36 it spread out of the portal tract (stages 2, 3 or 4).  
37  
38  
39  
40  
41  
42  
43  
44  
45  
46  
47  
48  
49  
50  
51  
52  
53  
54  
55  
56  
57

### 58 **Routine laboratory tests**

59  
60

1  
2  
3 **Baseline blood samples were collected on the day of antiviral treatment initiation, as**  
4 **well as at the end of treatment and the end of follow-up on a protocol basis.** Laboratory  
5  
6 tests included complete blood cell counts, HCV RNA serum concentration, HCV genotype,  
7  
8 aspartate aminotransferase (AST), alanine aminotransferase (ALT), gamma glutamyl  
9  
10 transpeptidase (GGT) and cholesterol. These parameters were used to calculate Forns' score,  
11  
12 APRI index and FIB-4 index at baseline and at 24 weeks after treatment, as previously  
13  
14 described (9-12).  
15  
16  
17  
18  
19  
20  
21

### 22 **Serum markers of ECM assays**

23  
24 Fasting serum samples (collected at baseline and at 24 weeks after antiviral  
25  
26 treatment) were stored at - 80 ° C until assayed for levels of HA, TIMP-1 and  
27  
28 PIIINP. ECM assays were determined using a random access automated clinical  
29  
30 immunochemistry analyzer that performs magnetic separation enzyme immunoassay  
31  
32 tests (Immuno 1™, Siemens Healthcare Diagnostics, Tarrytown, NY). **Each**  
33  
34 **method has a set of six calibrators. The HA and TIMP-1 methods use a cubic-**  
35  
36 **through-zero curve-fitting algorithm and the PIIINP method uses a weighted-**  
37  
38 **cubic-through-zero fit to construct calibration curves. Rates are measured for**  
39  
40 **the six calibrators.** Serum levels of ECM markers were expressed in ng/mL. The  
41  
42 mean reference values of PIIINP, TIMP-1 and HA, obtained from 60 healthy  
43  
44 subjects (47% males, median age 44 years) were  $6.13 \pm 2.9$ ,  $636.4 \pm 108.4$  and  
45  
46  $38.8 \pm 36.9$ , respectively. The intra- and inter-assay coefficients of variation were <  
47  
48 3.8 % and < 5.8 %, respectively. Patient values were entered into the ELF  
49  
50 (Enhanced Liver Fibrosis) algorithm, where the original score was simplified by  
51  
52 removing age (unpublished observations by Parkes et al., recently validated in the  
53  
54 detection of fibrosis in patients with nonalcoholic fatty liver disease) (24), and the  
55  
56  
57  
58  
59  
60



1  
2  
3 results expressed as discriminant scores. **Investigators performing the laboratory**  
4  
5 **tests were blinded for patients' clinical and histological data.**  
6  
7  
8  
9

### 10 **Statistical Analysis**

11  
12 Patients' baseline characteristics are given as mean  $\pm$  SD, median or proportion, as  
13 appropriate. The diagnostic accuracy of the different methods was analyzed by constructing  
14 receiver operating characteristic (ROC) curves and calculating the area under the curves  
15 (AUROCs). **We assessed the impact of the prevalences of the fibrosis stages defining**  
16 **nonadvanced and advanced fibrosis on the observed AUROCs (obAUROC) by using a**  
17 **previously suggested method of standardization (28). Firstly, we calculated the**  
18 **difference between advanced and nonadvanced mean fibrosis stage (DANA) according**  
19 **to a uniform distribution with a prevalence of 0.20 for each of the 5 stages in**  
20 **METAVIR units (uniform DANA=  $[2+3+4/3]-[1+0/2] = 2.5$ ) or to the observed**  
21 **prevalence distribution in our cohort (natural DANA). The regression between the**  
22 **AUROCs of the different tests for the diagnosis of advanced fibrosis versus the DANAs**  
23 **resulting of different combinations of fibrosis stages allows to estimate the AUROCs**  
24 **from DANAs. The resulting regression equation was: AUROC = constant coefficient +**  
25 **(DANA regression coefficient) (DANA). The formula to calculate the adjusted AUROC**  
26 **according to our observed fibrosis prevalence was: ObAUROC + (DANA regression**  
27 **coefficient ) (natural DANA - Observed DANA). The formula to calculate the adjusted**  
28 **AUROC according to a uniform DANA of 2.5 was: ObAUROC + (DANA regression**  
29 **coefficient) (2.5 – Observed DANA).**  
30  
31  
32  
33  
34  
35  
36  
37  
38  
39  
40  
41  
42  
43  
44  
45  
46  
47  
48  
49  
50  
51  
52  
53  
54

55 The sensitivity, specificity, positive predictive value (PPV), negative predictive value (NPV),  
56 likelihood ratios (LR) and diagnostic odds ratios (**DOR**) were determined, using hepatic  
57 fibrosis stage as determined by liver biopsy as the reference. **DOR measures the overall**  
58  
59  
60

1  
2  
3 **diagnostic test's accuracy by dividing the LR+ by the LR-.** Chi-square and *t* tests  
4  
5 were used to analyze categorical and continuous variables, respectively. The Wilcoxon  
6  
7 matched pairs signed-rank test was used to evaluate changes between baseline and end of  
8  
9 follow-up scores. Logistic regression analysis was used to test for associations between  
10  
11 variables and the type of virologic response. A two-tailed *p* value of less than 0.05 was  
12  
13 considered statistical significant.  
14  
15

16  
17 Statistical analyses were performed with SPSS software (version 14.0, SPSS Inc, Chicago,  
18  
19 IL) and the comparison of AUROC values was carried out by the DeLong et al method (29).  
20  
21  
22  
23  
24  
25  
26

## 27 **Results**

### 28 **Characteristics of patients**

29  
30 Baseline clinical, laboratory and virologic characteristics of the 340 patients are shown in  
31  
32 Table 1. The mean age of the patients was 47.7 years and 63.8% were male. The vast  
33  
34 majority of patients (73.9%) were infected with HCV genotype 1. **Mean biopsy length**  
35  
36 **was 15 mm (range 10-30 mm), with 55% of specimens > 15 mm, 16% > 20 mm and**  
37  
38 **1% > 25mm. Mean number of portal tracts was 9.** The stage of liver fibrosis was  
39  
40 distributed as follows: F0, n= 34 (10%); F1, n= 77 (22.6 %); F2, n= 74 (21.8%); F3, n= 31  
41  
42 (9.1%); F4, n= 124 (36.4%). The prevalence of significant fibrosis ( $F \geq 2$ ) in this cohort was  
43  
44 67.3%. **Diabetes mellitus was present in 8.5% of the patients.**  
45  
46  
47  
48  
49  
50  
51  
52

### 53 **Performance of noninvasive tests**

54  
55 The results for the overall accuracy of the different tests for significant fibrosis and cirrhosis  
56  
57 are presented as ROC curves in figures 1 and 2, respectively. The AUROCs of Forns' score,  
58  
59 APRI, FIB-4 index and the ELF score had similar diagnostic accuracies for significant  
60

1  
2  
3 fibrosis as assessed by DeLong's method. FIB-4 index was significantly better than APRI  
4  
5 and the ELF score for the diagnosis of cirrhosis, as assessed by non parametric analysis of  
6  
7 AUC values (Table 2). **The performance of all the tests improved only for the diagnosis**  
8  
9 **of cirrhosis in patients with a biopsy length > 20 mm.** Standardization of AUROCs to  
10  
11 address spectrum effect was evaluated for the different tests. **The observed AUROCs for**  
12  
13 **significant fibrosis for Forns' score, APRI, FIB-4 and ELF test ranged from 0.70 to**  
14  
15 **0.94; 0.67 to 0.95; 0.70 to 0.96 and 0.68 to 0.88, respectively. Standardized AUROCs**  
16  
17 **according to the uniform and naturally observed prevalences of fibrosis stages for**  
18  
19 **these tests were 0.82 and 0.83; 0.831 and 0.832; 0.85 and 0.85; 0.80 and 0.81,**  
20  
21 **respectively.**

22  
23  
24  
25  
26  
27 The estimates of sensitivity, specificity and negative and positive predictive values according  
28  
29 to the cutoff values originally reported for diagnosis of significant fibrosis, severe fibrosis  
30  
31 (F3-4) and cirrhosis for each test are shown in table 3.

32  
33  
34 By using Forns' score for the prediction of absence or presence of significant fibrosis (F2 or  
35  
36 greater), 64 of 89 (71.9%) patients with a value lower than 4.2 had non significant fibrosis.  
37  
38 Applying the high cutoff of this score (>6.9), 101 of 109 (92.6%) had significant fibrosis.  
39  
40 Only 8 patients with non significant fibrosis were misclassified. Forty-nine percent were  
41  
42 correctly classified and liver biopsy could be avoided in 58% of patients.

43  
44  
45 By APRI, 56 of 76 (73.7%) patients with a value of 0.5 or lower did not have significant  
46  
47 fibrosis. Among those with an index higher than 1.5, 107 of 115 (93%) patients did have  
48  
49 significant fibrosis. Using these cutoff values, absence or presence of significant fibrosis was  
50  
51 correctly identified in 48% of patients, and liver biopsy could be avoided in 56%. For the  
52  
53 outcome of cirrhosis, 159 of 181 (87.9%) patients with an APRI value of 1 or lower did not  
54  
55 have cirrhosis. Only 22 of 124 (17.7%) with cirrhosis were incorrectly classified. For those  
56  
57 with an APRI value higher than 2, 61 of 81 (75.3%) had cirrhosis and only 20 of 216 (9%)  
58  
59  
60

1  
2  
3 without cirrhosis were incorrectly classified. Using these cutoff values, absence or presence  
4 of cirrhosis can be correctly identified in 65% of patients, avoiding liver biopsy in 77% of  
5 patients.  
6  
7  
8  
9

10 By applying FIB-4 index, 118 of 131 patients (90%) with a value below 1.45 did not have  
11 severe fibrosis (F3-4). Eighty-three of 100 patients (83%) with an index higher than 3.25 had  
12 severe fibrosis. With both thresholds, 59% of patients were correctly identified and liver  
13 biopsy could be avoided in 68% of patients.  
14  
15  
16  
17  
18

19 When using the ELF score, we determined two threshold values to recognize the absence or  
20 presence of significant fibrosis. Below a cutoff value of -0.45, 58 of 80 patients (73%) did  
21 not have significant fibrosis. Above a cutoff value of 1.07, 108 of 119 (91%) patients had  
22 significant fibrosis. With these thresholds we could correctly classify 49 % of patients, and  
23 liver biopsy could be avoided in 59% with a minimal diagnostic error. For the outcome of  
24 cirrhosis, 114 of 127 patients (90%) with a cutoff value below 0.06 did not have cirrhosis.  
25 For those patients with an ELF score higher than 1.73, 65 of 86 (76%) had cirrhosis. With  
26 these thresholds absence or presence of cirrhosis could be correctly identified in 53%, and  
27 liver biopsy could be avoided in 63%.  
28  
29  
30  
31  
32  
33  
34  
35  
36  
37  
38  
39  
40  
41  
42

#### 43 **Baseline ECM markers as predictors of virologic response**

44 One hundred and sixty-two patients achieved a sustained virologic response while 178  
45 patients did not. Among the latter, 62 patients had undetectable HCV-RNA at the end of  
46 treatment but relapsed during follow-up. Baseline clinical characteristics according to  
47 virologic response are shown in Table 4. Sustained virologic responders were more likely to  
48 have lower baseline levels of GGT, glucose, and HCV RNA, higher levels of cholesterol,  
49 higher platelet count, non-1 HCV genotype, and less severe fibrosis. The ELF score and two  
50  
51  
52  
53  
54  
55  
56  
57  
58  
59  
60

1  
2  
3 of its components, HA and TIMP-1, were also significantly lower in sustained virologic  
4  
5 responders.

6  
7  
8 Multivariate logistic regression analysis was used to test which baseline variables could  
9  
10 predict virologic response. In the final model, HCV RNA viral load (odds ratio (OR), 0.45;  
11  
12 95% CI 0.32-0.65,  $p= 0.0001$ ), cholesterol (OR, 1.01; 95% CI 1.01-1.02,  $p= 0.0001$ ),  
13  
14 glucose (OR, 0.98; 95% CI 0.97-0.99,  $p= 0.004$ ), HCV genotype 1 (OR, 0.42; 95% CI 0.24  
15  
16  $-0.76$ ,  $p= 0.004$ ) and serum HA (OR, 0.99; 95% CI 0.99  $-1.00$ ,  $p= 0.008$ ) were all  
17  
18 independent predictors of SVR. A sub-analysis of patients with HCV genotype 1 showed  
19  
20 that the same variables were independent predictors of SVR.  
21  
22  
23  
24  
25  
26

### 27 **Score changes according to virologic response**

28  
29 Among the 340 patients included in this study, 161 had serum samples available for  
30  
31 measurement of matrix markers at 24 weeks of follow-up after treatment (limited availability  
32  
33 of reagents precluded testing of all samples). Baseline characteristics of this subset of  
34  
35 patients are shown in Table 1. Eighty-five patients achieved sustained virologic response and  
36  
37 seventy-six, including 39 who relapsed, did not.  
38  
39

40  
41 Changes in the mean ELF score and its components are summarized in Table 5. At 24 weeks  
42  
43 after therapy the ELF score decreased significantly in patients who achieved sustained  
44  
45 virologic response but remained unchanged in those who did not. The mean ELF score did  
46  
47 not change significantly in relapsers (data not shown). A significant decrease of all of the  
48  
49 components of the ELF score was observed in sustained virologic responders whereas HA  
50  
51 and PIIINP remained unchanged and TIMP-1 increased in non sustained responders.  
52  
53

54  
55 The individual changes in the ELF score according to virologic response and to the severity  
56  
57 of liver fibrosis at baseline are shown in Figure 3. On an individual basis, the ELF score  
58  
59 decreased in most sustained virologic responders but in only a minority of non sustained  
60

1  
2  
3 virologic responders, in most of whom the ELF score remained unchanged or increased. The  
4 decrease of the ELF score was more marked in patients with more advanced liver fibrosis,  
5  
6 who showed higher mean ELF scores at baseline.  
7  
8

9  
10 As expected, Forns' score, APRI and FIB-4 index decreased significantly in patients who  
11 achieved sustained virologic response (Table 5). This is mainly due to the normalization of  
12 their respective components (particularly AST and ALT).  
13  
14  
15  
16  
17  
18

## 19 Discussion

20  
21 The use of routine hematological and biochemical parameters combined in panels such as  
22 Forns' score, APRI or FIB-4 index, is an "indirect", easy and inexpensive approach to  
23 identify patients with significant fibrosis and cirrhosis. The Forns' score was developed and  
24 validated in a population where only 25% of patients had significant hepatic fibrosis (9)  
25 while the prevalence of significant fibrosis in the present cohort was much higher (67 %).  
26  
27 This difference may explain why this test performed better in the present cohort than in the  
28 original study to rule in significant fibrosis, with a PPV higher than 90%, but not to exclude  
29 significant fibrosis. Similarly, the PPV for significant fibrosis obtained in this study with  
30 APRI  $\geq 1.5$ , compared favorably with that reported in the original study (93% vs. 88%),  
31 although the NPV at the 0.5 cutoff point was lower (74 % vs. 86%) (10). Similar results were  
32 shown with the FIB-4 index. For the outcome of cirrhosis, all scores performed well but  
33 FIB-4 showed a significantly better accuracy as compared to APRI and ELF.  
34  
35  
36  
37  
38  
39  
40  
41  
42  
43  
44  
45  
46  
47  
48  
49

50 The use of scores including direct fibrogenesis markers may be an advantage in certain  
51 situations, such as in patients with CHC who undergo antiviral therapy. **Since the markers**  
52 **included in such scores are directly related to the fibrogenesis process, their assessment**  
53 **might prove useful to monitor liver fibrosis regression, a well documented finding in**  
54 **individuals achieving a sustained virological response (30, 31).** In previous studies,  
55  
56  
57  
58  
59  
60

1  
2  
3 significant declines from baseline of PIIIIP and YKL-40 were also noted at week 72 in  
4  
5 patients with an SVR compared with in NRs (22).  
6

7  
8 The main purpose of this study, was to assess the performance of a score based on  
9  
10 fibrogenesis markers (ELF score), due to its potential utility to evaluate changes during  
11  
12 follow-up or after treatment. **The testing algorithm is patented but is not yet**  
13  
14 **commercially available in most countries. In our cohort, the ELF score yielded a good**  
15  
16 **accuracy in the diagnosis of liver fibrosis and cirrhosis, with similar accuracy to that of**  
17  
18 **simple panels. Moreover, our** study showed a significant decrease of the mean serum  
19  
20 concentration of ECM markers in patients who had eliminated the virus, which did not occur  
21  
22 in non responders or in relapsers. As expected, analysis of the combined ELF score produced  
23  
24 similar results. Analysis of changes in individual patients showed that the ELF score  
25  
26 decreased in most sustained virologic responders, particularly in those with more severe  
27  
28 fibrosis at baseline, whereas the ELF scores increased or remained unchanged in most non-  
29  
30 sustained virologic responders. The significant decline in ECM markers experienced only by  
31  
32 sustained responders probably reflects a decrease in liver fibrogenesis once the primary  
33  
34 cause, HCV virus, is cleared, with eventual normalization of the imbalance between  
35  
36 degradation and synthesis of liver collagen. These conclusions are in agreement with the  
37  
38 improvement in liver fibrosis observed in sustained virological responders from large clinical  
39  
40 trials where a follow-up liver biopsy was available (30, 31).  
41  
42  
43  
44  
45  
46  
47

48 The results of our study are in accordance with recent reports evaluating the effect of anti-  
49  
50 HCV treatment using other non-invasive methods. **A comparison of HCV FibroSURE**  
51  
52 **(or FT-AT) and FIBROSpect II (HA, TIMP-1 and  $\alpha_2$  macroglobulin) during a phase**  
53  
54 **2b clinical trial with albinterferon alfa-2b plus ribavirin noted a significant decline in**  
55  
56 **the score values in patients with SVR compared with in nonresponders (32). Another**  
57  
58 **study performed a longitudinal evaluation of FT-AT with HA as a comparative**  
59  
60

1  
2  
3 **reference in CHC patients treated with IFN monotherapy; the authors observed a**  
4 **significant decrease of FT-AT in those who obtained SVR versus NR and relapsers,**  
5 **but with no significant changes noted in HA (33). In a more recent study, a**  
6 **comparison of the effect of antiviral therapy on FT and FibroScan between treated and**  
7 **untreated patients, showed a significant decrease of FT at the end of follow-up for**  
8 **those patients who obtained SVR or relapsed (34).**  
9  
10  
11  
12  
13  
14  
15  
16

17 In our study, the significant increase in serum TIMP-1 levels observed at the end of follow-  
18 up in non-sustained virologic responders may indicate that fibrosis is progressing in these  
19 patients. Indeed, other reports found a similar TIMP-1 increase following interferon alfa  
20 therapy in nonresponder patients (35-37). TIMP-1 protects collagen from fibrolysis by the  
21 matrix metalloproteinases and also inhibits the apoptosis of hepatic stellate cells (38). In  
22 experimental models, overexpression of TIMP-1 was associated to enhanced fibrosis,  
23 supporting the hypothesis that inhibition of matrix degradation may contribute to progression  
24 of fibrosis (39).  
25  
26  
27  
28  
29  
30  
31  
32  
33  
34  
35

36 We also observed significant post-treatment changes of Forns' score, APRI and FIB-4 tests.  
37 However several components of these tests, such as serum cholesterol, platelet counts and  
38 particularly transaminases, that are not directly involved in hepatic fibrogenesis or fibrolysis,  
39 may change under antiviral therapy, particularly in responders.  
40  
41  
42  
43  
44  
45

46 Of interest, by multivariate analysis, HA, a component of the ELF score showed an  
47 association with sustained virologic response. Previous studies have shown that HA levels  
48 reflect an increased production of this marker by hepatic stellate cell as well as a decreased  
49 removal from circulation, which depends on the uptake by specific receptors in hepatic  
50 sinusoidal endothelial cells (40, 41). Higher HA levels and lower probability of virologic  
51 response could reflect dysfunction of endothelial sinusoidal cells that is present in patients  
52 with more advanced liver fibrosis, another independent predictor of virologic response.  
53  
54  
55  
56  
57  
58  
59  
60



1  
2  
3 **Our study has several limitations. First, the lack of a follow-up liver biopsy, which**  
4 **prevented us to directly assess the effect of treatment on liver fibrosis. Second, the**  
5 **short period of time that elapsed between baseline and follow-up evaluations. Since**  
6 **liver fibrosis decreases progressively after a sustained virologic response (42), the**  
7 **evaluation period of the study might have been too short to detect additional effects.**  
8 **Third, the proportion of patients with a biopsy size >20 mm was suboptimal. Finally,**  
9 **although this is a cohort study, ECM assays were performed on stored serum samples**  
10 **which were not available for all included patients.**

11  
12  
13  
14  
15  
16  
17  
18  
19  
20  
21  
22 In summary, this study of a large cohort of patients with CHC confirms that both indirect  
23 fibrosis tests and measurement of ECM serum markers, included in the ELF score, are  
24 accurate to predict the severity of fibrosis. ECM markers and the composite ELF score  
25 significantly decreased in sustained virologic responders but remained unchanged in non  
26 sustained responders, suggesting that these markers may be useful as a non-invasive means  
27 to assess the effects of antiviral therapy on hepatic fibrosis and fibrogenesis. **The potential**  
28 **utility of the ELF test in this setting as compared with other commercially available**  
29 **patented markers would require extensive validation and a cost-effective analysis.**  
30  
31  
32  
33  
34  
35  
36  
37  
38  
39  
40  
41  
42  
43  
44  
45  
46  
47  
48  
49  
50  
51  
52  
53  
54  
55  
56  
57  
58  
59  
60

## References

1. World Health Organization, Hepatitis C -global prevalence (update). World Health Org Weekly Epidemiol Rec 1999; 74: 421-428.
2. Thomas DL, Seeff LB. Natural history of hepatitis C. Clin Liver Dis 2005; 9: 383-98.
3. Manns MP, McHutchison JG, Gordon SC et al. Peginterferon alfa-2b plus ribavirin compared with interferon alfa-2b plus ribavirin for initial treatment of chronic hepatitis C: a randomised trial. Lancet 2001; 358: 958-965.
4. Fried MW, Shiffman ML, Reddy KR et al. Peginterferon alfa-2a plus ribavirin for chronic hepatitis C virus infection. N Engl J Med 2002; 347: 975-982.
5. National Institutes of Health consensus development conference statement: management of hepatitis C: 2002—June 10-12, 2002. Hepatology 2002; 36: S3-S20.
6. Perrault J, McGill DB, Ott BJ, Taylor WF. Liver biopsy: complications in 1000 inpatients and outpatients. Gastroenterology 1978; 74:103-6.
7. Regev A, Berho M, Jeffers LJ et al. Sampling error and intraobserver variation in liver biopsy in patients with chronic HCV infection. Am J Gastroenterol 2002; 97: 2614-8.
8. Bedossa P, Dargère D, Paradis V. Sampling variability of liver fibrosis in chronic hepatitis C. Hepatology 2003; 38:1449-57.
9. Forns X, Ampurdanés S, Llovet JM et al. Identification of chronic hepatitis C patients without hepatic fibrosis by a simple predictive model. Hepatology 2002; 36: 986-92.

- 1  
2  
3 10. Wai CT, Greenson JK, Fontana RJ et al. A simple noninvasive index can predict  
4  
5 both significant fibrosis and cirrhosis in patients with chronic hepatitis C.  
6  
7 Hepatology 2003; 38: 518-26.  
8  
9
- 10 11. Sterling RK, Lissen E, Clumeck N et al. Development of a simple noninvasive  
11  
12 index to predict significant fibrosis in patients with HIV/HCV coinfection.  
13  
14 Hepatology 2006; 43: 1317-1325.  
15  
16
- 17 12. Vallet-Pichard A, Mallet V, Nalpas B et al. FIB-4: an inexpensive and accurate  
18  
19 marker of fibrosis in HCV infection. Comparison with liver biopsy and fibrotest.  
20  
21 Hepatology 2007; 46: 32-6.  
22  
23
- 24 13. Imbert-Bismut F, Ratziu V, Pieroni L, Charlotte F, Benhamou Y, Poynard T.  
25  
26 Biochemical markers of liver fibrosis in patients with hepatitis C virus infection:  
27  
28 a prospective study. Lancet 2001; 357: 1069-75.  
29  
30
- 31 14. Poynard T, McHutchison J, Manns M, Myers RP, Albrecht J. Biochemical  
32  
33 surrogate markers of liver fibrosis and activity in a randomized trial of  
34  
35 peginterferon alfa-2b and ribavirin. Hepatology 2003; 38: 481-92.  
36  
37
- 38 15. Castéra L, Vergniol J, Foucher J et al. Prospective comparison of transient  
39  
40 elastography, Fibrotest, APRI, and liver biopsy for the assessment of fibrosis in  
41  
42 chronic hepatitis C. Gastroenterology 2005; 128: 343-50.  
43  
44
- 45 16. Ziol M, Handra-Luca A, Kettaneh A et al. Noninvasive assessment of liver  
46  
47 fibrosis by measurement of stiffness in patients with chronic hepatitis C.  
48  
49 Hepatology 2005; 41: 48-54.  
50  
51
- 52 17. Rockey DC, Bissell DM. Noninvasive measures of liver fibrosis. Hepatology  
53  
54 2006; 43: S113-20.  
55  
56
- 57 18. Guéchet J, Laudat A, Loria A, Serfaty L, Poupon R, Giboudeau J. Diagnostic  
58  
59 accuracy of hyaluronan and type III procollagen amino-terminal peptide serum  
60

- 1  
2  
3 assays as markers of liver fibrosis in chronic viral hepatitis C evaluated by ROC  
4 curve analysis. Clin Chem 1996; 42: 558-63.  
5  
6  
7  
8 19. Fontana RJ, Goodman ZD, Dienstag JL et al. Relationship of serum fibrosis  
9 markers with liver fibrosis stage and collagen content in patients with advanced  
10 chronic hepatitis C. Hepatology 2008; 47: 789-98.  
11  
12  
13 20. Kamal SM, Turner B, He Q et al. Progression of fibrosis in hepatitis C with and  
14 without schistosomiasis: correlation with serum markers of fibrosis. Hepatology  
15 2006; 43: 771-9.  
16  
17  
18 21. Trocme C, Leroy V, Sturm N et al. Longitudinal evaluation of a fibrosis index  
19 combining MMP-1 and PIIINP compared with MMP-9, TIMP-1 and hyaluronic  
20 acid in patients with chronic hepatitis C treated by interferon-alpha and  
21 ribavirin. J Viral Hepat 2006;13: 643-51.  
22  
23  
24 22. Fontana RJ, Bonkovsky HL, Naishadham D et al. Serum fibrosis marker levels  
25 decrease after successful antiviral treatment in chronic hepatitis C patients with  
26 advanced fibrosis. Clin Gastroenterol Hepatol 2009; 7: 219-26.  
27  
28  
29 23. Rosenberg WM, Voelker M, Thiel R et al. Serum markers detect the presence  
30 of liver fibrosis: a cohort study. Gastroenterology 2004; 127: 1704-13.  
31  
32  
33 24. Guha IN, Parkes J, Roderick PR, Harris S, Rosenberg WM. Non-invasive  
34 markers associated with liver fibrosis in non-alcoholic fatty liver disease. Gut  
35 2006; 55: 1650-60.  
36  
37  
38 25. Guha IN, Parkes J, Roderick P et al. Noninvasive markers of fibrosis in  
39 nonalcoholic fatty liver disease: Validating the European Liver Fibrosis Panel  
40 and exploring simple markers. Hepatology 2008; 47: 455-60.  
41  
42  
43  
44  
45  
46  
47  
48  
49  
50  
51  
52  
53  
54  
55  
56  
57  
58  
59  
60

- 1  
2  
3  
4  
5  
6  
7  
8  
9  
10  
11  
12  
13  
14  
15  
16  
17  
18  
19  
20  
21  
22  
23  
24  
25  
26  
27  
28  
29  
30  
31  
32  
33  
34  
35  
36  
37  
38  
39  
40  
41  
42  
43  
44  
45  
46  
47  
48  
49  
50  
51  
52  
53  
54  
55  
56  
57  
58  
59  
60
26. Mayo MJ, Parkes J, Adams-Huet B et al. Prediction of clinical outcomes in primary biliary cirrhosis by serum enhanced liver fibrosis assay. *Hepatology* 2008; 48: 1549-57.
27. The French METAVIR Cooperative Study Group. Intraobserver and interobserver variations in liver biopsy interpretation in patients with chronic hepatitis C. *Hepatology* 1994; 20: 15-20.
28. Poynard T, Halfon P, Castera L et al. FibroPaca Group. Standardization of ROC curve areas for diagnostic evaluation of liver fibrosis markers based on prevalences of fibrosis stages. *Clin Chem*. 2007; 53: 1615-22.
29. DeLong ER, DeLong DM, Clarke-Pearson DL. Comparing the areas under two or more correlated receiver operating characteristic curves: a nonparametric approach. *Biometrics* 1988; 44: 837-845.
30. Poynard T, McHutchison J, Manns M et al. Impact of pegylated interferon alfa-2b and ribavirin on liver fibrosis in patients with chronic hepatitis C. *Gastroenterology* 2002; 122: 1303-13.
31. Cammà C, Di Bona D, Schepis F et al. Effect of peginterferon alfa-2a on liver histology in chronic hepatitis C: a meta-analysis of individual patient data. *Hepatology* 2004; 39: 333-42.
32. Patel K, Benhamou Y, Yoshida EM et al. An independent and prospective comparison of two commercial fibrosis marker panels (HCV FibroSURE and FIBROSpect II) during albinterferon alfa-2b combination therapy for chronic hepatitis C. *J Viral Hepat* 2009; 16: 178-86.
33. Poynard T, Imbert-Bismut F, Ratziu V et al. Biochemical markers of liver fibrosis in patients infected by hepatitis C virus: longitudinal validation in a randomized trial. *J Viral Hepat* 2002; 9: 128-33.

- 1  
2  
3  
4  
5  
6  
7  
8  
9  
10  
11  
12  
13  
14  
15  
16  
17  
18  
19  
20  
21  
22  
23  
24  
25  
26  
27  
28  
29  
30  
31  
32  
33  
34  
35  
36  
37  
38  
39  
40  
41  
42  
43  
44  
45  
46  
47  
48  
49  
50  
51  
52  
53  
54  
55  
56  
57  
58  
59  
60
34. Vergniol J, Foucher J, Castéra L et al. **Changes of non-invasive markers and FibroScan values during HCV treatment. J Viral Hepat 2009; 16: 132-40.**
35. Arai M, Niioka M, Maruyama K et al. Changes in serum levels of metalloproteinases and their inhibitors by treatment of chronic hepatitis C with interferon. *Dig Dis Sci* 1996; 41: 995-1000.
36. Mitsuda A, Suou T, Ikuta Y, Kawasaki H . Changes in serum tissue inhibitor of matrix metalloproteinase-1 after interferon alpha treatment in chronic hepatitis C. *J Hepatol* 2000; 32: 666-72.
37. Ninomiya T, Yoon S, Nagano H et al. Significance of serum matrix metalloproteinases and their inhibitors on the antifibrogenetic effect of interferon-alfa in chronic hepatitis C patients. *Intervirology* 2001; 44: 227-31.
38. Murphy FR, Issa R, Zhou X et al. Inhibition of apoptosis of activated hepatic stellate cells by tissue inhibitor of metalloproteinase-1 is mediated via effects on matrix metalloproteinase inhibition: implications for reversibility of liver fibrosis. *J Biol Chem* 2002; 277: 11069-76.
39. Yoshiji H, Kuriyama S, Miyamoto Y et al. Tissue inhibitor of metalloproteinases-1 promotes liver fibrosis development in a transgenic mouse model. *Hepatology* 2000; 32: 1248-54
40. Ueno T, Inuzuka S, Torimura T et al. Serum hyaluronate reflects hepatic sinusoidal capillarization. *Gastroenterology* 1993; 105: 475-81.
41. McCourt PA, Smedsrød BH, Melkko J, Johansson S. Characterization of a hyaluronan receptor on rat sinusoidal liver endothelial cells and its functional relationship to scavenger receptors. *Hepatology* 1999; 30: 1276-86.
42. George SL, Bacon BR, Brunt EM, Mihindukulasuriya KL, Hoffmann J, Di Bisceglie AM. Clinical, virologic, histologic, and biochemical outcomes after

1  
2  
3 successful HCV therapy: a 5-year follow-up of 150 patients. Hepatology 2009;  
4  
5 49: 729-38.  
6  
7  
8  
9

#### 10 **Abbreviations:**

11  
12 CHC, chronic hepatitis C; ECM, extracellular matrix; significant fibrosis,  $F \geq 2$ ; ELF,  
13 Enhanced Liver Fibrosis; APRI, AST to platelet ratio index; PIIINP, aminoterminal  
14 propeptide of pro-collagen III; HA, hyaluronic acid; TIMP-1, tissue inhibitor of  
15 metalloproteinase type 1; ROC, receiver operating characteristic curve; AUROC, area under  
16 the ROC curve; **obAUROC, observed AUROC**; SVR, sustained virologic response; HCV,  
17 hepatitis C virus; HSC, hepatic stellate cells; AST, aspartate aminotransferase; ULN, upper  
18 limit of normal; ALT, alanine aminotransferase; GGT, gamma glutamyl transpeptidase;  
19 severe fibrosis,  $F \geq 3$ ; Se, sensitivity; Sp, specificity; PPV, positive predictive value; NPV,  
20 negative predictive value; LR, likelihood ratio; DOR, diagnostic odds ratio; OR, odds ratio.  
21  
22  
23  
24  
25  
26  
27  
28  
29  
30  
31  
32  
33  
34  
35  
36  
37  
38  
39  
40  
41  
42  
43  
44  
45  
46  
47  
48  
49  
50  
51  
52  
53  
54  
55  
56  
57  
58  
59  
60

## Tables

Table 1. Baseline characteristics of the patients

Variable	Entire cohort n = 340	Follow-up ELF score n = 161 <sup>a</sup>	P value
<i>Demographics</i>			
Age (yrs)	47.7 ± 10.6	48.1 ± 10.7	0.54
Male sex	217 (63.8)	102 (63.4)	0.87
Body mass index (kg/m <sup>2</sup> )	25.4 ± 3.6	25.1 ± 3.5	0.07
<i>Laboratory</i>			
AST/ULN	2.15 ± 1.64	2.2 ± 1.8	0.51
ALT/ULN	2.94 ± 2.5	3.1 ± 3.0	0.28
GGT/ULN	2.03 ± 1.81	1.9 ± 1.7	0.06
Platelet count (10 <sup>3</sup> /mm <sup>3</sup> )	180.5 ± 72.1	179.0 ± 73.6	0.15
Cholesterol (mg/dL)	177.9 ± 39.2	184.5 ± 44.1	0.005
<i>Virology</i>			
HCV RNA log <sub>10</sub> (IU/mL)	5.6 ± 0.7	5.9 ± 0.7	0.001
HCV genotype			0.2
1	251 (73.9)	111 (69)	
2	26 (7.6)	15 (9.3)	
3	45 (13.2)	28 (17.4)	
4	18 (5.3)	7 (4.3)	
Length of biopsy core (mm)	15 ± 3.9	15 ± 4.1	0.15
<i>Fibrosis Stage</i>			
F0	34 (10)	13 (8.1)	0.96
F1	77 (22.6)	37 (23.0)	
F2	74 (21.8)	40 (24.8)	
F3	31 (9.1)	16 (9.9)	
F4	124 (36.4)	55 (34.2)	

<sup>a</sup> 161 patients in whom ELF score was determined before and after antiviral therapy

Results are means ± standard deviation or n (%)



**Table 2. Overall accuracy of Forns' Score, APRI, FIB-4 Index and the ELF Score in predicting significant fibrosis, severe fibrosis and cirrhosis (n=340)**

<b>Non-invasive test</b>	<b>Significant fibrosis AUC (95% CI)</b>	<b>F ≥ 3 AUC (95% CI)</b>	<b>Cirrhosis AUC (95% CI)</b>
Forns' Score	0.83 (0.78-0.87)	0.85 (0.81-0.89)	0.87 (0.83-0.91)
APRI	0.83 (0.79-0.88)	0.86 (0.82-0.90)	0.86 (0.82-0.90)
FIB-4 Index	0.85 (0.81-0.89)	0.87 (0.83-0.91)	0.89 *(0.85-0.92)
ELF Score	0.81 (0.76-0.86)	0.83 (0.79-0.87)	0.82 (0.78-0.87)

\* p <0.05 vs. APRI and ELF Score by DeLong et al method

**Table 3. Diagnostic accuracy of non-invasive tests in the prediction of significant fibrosis (F $\geq$  2), severe fibrosis (F  $\geq$  3) and cirrhosis (F4)**

End point	All patients N= 340	Fibrosis Stage n (%)		Se %	Sp %	PPV %	NPV %	LR +ve %	LR -ve %	DOR
<b>F<math>\geq</math> 2</b>	<b>n (%)</b>	<b>F0-1 n=111</b>	<b>F <math>\geq</math> 2 n=229</b>							
Forns' Score										
<4.2	89 (26.2)	64 (57.7)	25 (10.9)	89	58	81	72	2.1	0.2	10.5
>4.2	251 (73.9)	47 (42.3)	204 (89.1)							
<6.9	231 (68)	103 (92.8)	128 (55.9)	44	93	93	45	6.3	0.6	10.5
>6.9	109 (32.1)	8 (7.2)	101 (44.1)							
APRI										
$\leq$ 0.5	76 (22.4)	56 (50.5)	20 (8.7)	91	51	79	74	1.9	0.2	9.5
>0.5	264 (77.6)	55 (49.6)	209 (91.3)							
$\leq$ 1.5	225 (66.2)	103 (92.8)	122 (53.3)	47	93	93	46	6.7	0.6	11.2
>1.5	115 (33.8)	8 (7.2)	107 (46.7)							
ELF Score										
$\leq$ -0.45	80 (23.5)	58 (52.2)	22 (9.6)	90	52	80	73	1.9	0.2	9.5
> -0.45	260 (76.5)	53 (47.7)	207 (90.4)							
$\leq$ 1.07	221 (65)	100 (90.1)	121 (52.8)	47	90	91	45	4.7	0.6	7.8
> 1.07	119 (35)	11 (9.9)	108 (47.2)							
<b>F <math>\geq</math> 3</b>		<b>F0-2 n=185</b>	<b>F <math>\geq</math> 3 n=155</b>							
FIB-4 Index										
<1.45	131 (38.5)	118 (63.8)	13 (8.4)	92	64	74	90	2.6	0.1	26
>1.45	209 (61.5)	67 (36.2)	142 (91.6)							
<3.25	240 (70.6)	168 (91)	72 (46.5)	54	91	83	77	6	0.5	12
>3.25	100 (29.4)	17 (9.2)	83 (53.5)							
<b>F 4</b>		<b>F0-3 n=216</b>	<b>F 4 n=124</b>							
APRI										
$\leq$ 1	181(53.2)	159 (73.6)	22 (12.2)	82	74	64	88	3.2	0.2	16
>1	159 (46.8)	57 (16.8)	102(82.2)							
$\leq$ 2	259 (76.2)	196 (90.7)	63 (50.8)	49	91	75	76	5.4	0.6	9
>2	81 (23.8)	20 (9.3)	61 (49.2)							
ELF Score										
$\leq$ 0.06	127 (37.4)	114 (52.8)	13 (10.5)	90	53	52	90	1.9	0.2	9.5
>0.06	213 (62.6)	102 (47.2)	111 (89.5)							
$\leq$ 1.73	254 (74.7)	195 (90.3)	59 (47.6)	52	90	76	77	5.2	0.5	10.4
>1.73	86 (25.3)	21 (9.7)	65 (52.4)							

Table 4. Clinical characteristics according to virologic response in the entire cohort

Variable	Sustained responders (n = 162)	Non-sustained responders (n = 178)	P value
<i>Demographics</i>			
Age (yrs)	46.7 ± 10.8	48.7 ± 10.2	0.07
Sex (male)	103 (64.0)	115 (64.6)	0.74
Body mass index (kg/m <sup>2</sup> )	25.5 ± 3.7	25.4 ± 3.5	0.93
<i>Laboratory</i>			
AST/ULN	2.10 ± 1.84	2.20 ± 1.47	0.10
ALT/ULN	3.20 ± 3.10	2.72 ± 1.79	0.23
GGT/ULN	1.63 ± 1.40	2.37 ± 2.10	0.000
Platelet count (10 <sup>3</sup> /mm <sup>3</sup> )	189.2 ± 70.0	172.3 ± 74.6	0.03
Cholesterol (mg/dL)	185.7 ± 40.7	170.5 ± 36.4	0.000
Glucose (mg/dL)	86.6 ± 16.6	100.3 ± 40.0	0.001
<i>Virology</i>			
HCV RNA log <sub>10</sub> (IU/mL)	5.6 ± 0.8	6.0 ± 0.6	0.000
Genotype 1	105 (64.8)	146 (82.0)	0.000
<i>Fibrosis Stage</i>			
F0	17 (10.7)	17 (9.6)	
F1	42 (26.4)	34 (19.1)	
F2	36 (22.2)	38 (21.3)	
F3	18 (11.1)	14 (7.9)	
F4	49 (30.3)	75 (42.1)	0.02
ELF Score	0.42 ± 1.31	0.79 ± 1.40	0.02
HA (ng/ml)	146.8 ± 186.3	226.5 ± 290	0.03
TIMP-1 (ng/ml)	836.8 ± 290.0	916.3 ± 286.1	0.002
PIIINP (ng/ml)	9.9 ± 6.7	11.5 ± 9.7	0.06

Data are expressed as number (%), mean ± SD

**Table 5. Baseline and end of follow-up ELF Score and individual markers, Forns`Score, APRI and FIB-4 Index in responder and non-responder patients**

Variable	Sustained responders (n = 85)		P value	Non-responders (n = 76)		P value
	Baseline	End of follow-up		Baseline	End of follow-up	
ELF Score	0.43 ± 1.27	-0.12 ± 1.1	<0.000	0.63 ± 1.4	0.57 ± 1.46	0.80
HA (ng/ml)	135.1 ± 151.5	82.6 ± 105.2	0.000	209.1 ± 293.1	201.6 ± 279.9	0.70
TIMP-1 (ng/ml)	860.7 ± 272.6	759.1 ± 606.4	0.000	897.3 ± 275.6	919.6 ± 604.4	0.04
PIIINP (ng/ml)	9.8 ± 6.8	7.5 ± 7.6	0.000	10.3 ± 6.6	10.3 ± 8.5	0.16
Forns` Score	5.3 ± 2.2	4.6 ± 2.3	0.000	6.2 ± 2.2	6.2 ± 2.3	0.8
APRI	1.7 ± 1.6	0.49 ± 0.36	0.000	1.7 ± 1.5	1.5 ± 1.8	0.02
FIB-4 Index	2.6 ± 2.2	1.9 ± 1.4	0.000	3.2 ± 2.5	3.4 ± 3.5	0.6

Data expressed as mean ± SD

1  
2  
3 **Legends for figures**  
4  
5  
6  
7

8 **Figure 1.** ROC curves of Forns' Score, APRI, FIB-4 Index, and the ELF Score for  
9 predicting the presence of significant hepatic fibrosis.  
10  
11

12  
13  
14  
15 **Figure 2.** ROC curves of Forns' Score, APRI, FIB-4 Index, and the ELF Score for  
16 predicting the presence of cirrhosis.  
17  
18  
19

20  
21  
22 **Figure 3.** ELF scores according to virologic response and fibrosis stage for baseline and  
23 24 week follow-up samples. (A): F0-1 and sustained virologic response. (B): F0-1 and  
24 non-sustained virologic response. (C): F2-4 and sustained virologic response. (D): F2-4  
25 and non-sustained virologic response. The black squares indicate the mean values of the  
26 ELF scores at each time points.  
27  
28  
29  
30  
31  
32  
33  
34  
35  
36  
37  
38  
39  
40  
41  
42  
43  
44  
45  
46  
47  
48  
49  
50  
51  
52  
53  
54  
55  
56  
57  
58  
59  
60

## Acknowledgements

**The authors thank Dr Ferran Torres for his contribution in the statistical analyses.** X.

Forns had a grant from Instituto de Salud Carlos III PI080239. W. Jimenez had a grant from Dirección General de Investigación Científica y Técnica (SAF2009-08839). S.M. Martinez was granted by Fundación Banco Bilbao Vizcaya Argentaria (BBVA) and Fundació Clínic.

## Statement of interests

Authors' declaration of personal interests

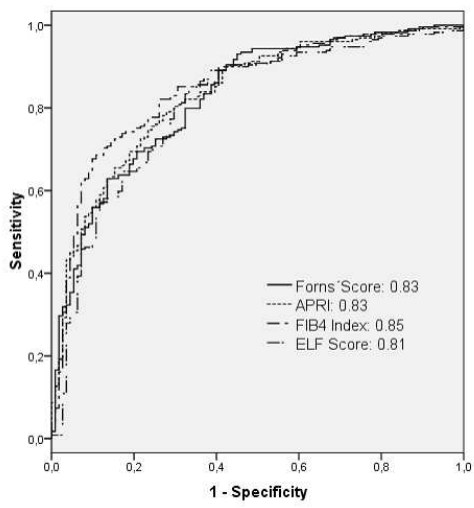
Drs Forns and Sánchez-Tapias have served as speakers, consultants and advisory board members for and have received research funding from Schering-Plough and Roche.

Dr Ellen Sampson is an employee of Siemens Healthcare Diagnostics.

Declaration of funding interests

This study was funded in part by BBVA, Fundació Clínic, Instituto de Salud Carlos III (PI080239) and Dirección General de Investigación Científica y Técnica (SAF2009-08839).

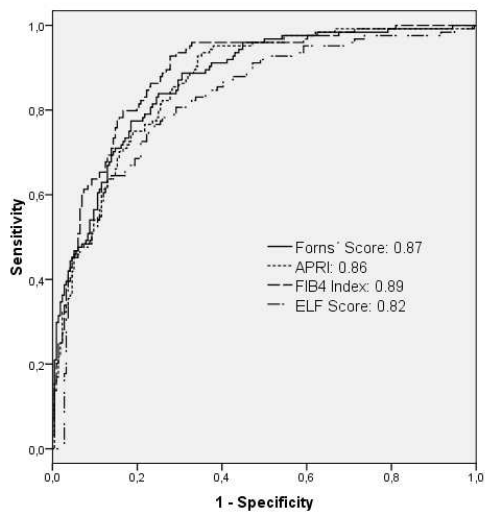
1  
2  
3  
4  
5  
6  
7  
8  
9  
10  
11  
12  
13  
14  
15  
16  
17  
18  
19  
20  
21  
22  
23  
24  
25  
26  
27  
28  
29  
30  
31  
32  
33  
34  
35  
36  
37  
38  
39  
40  
41  
42  
43  
44  
45  
46  
47  
48  
49  
50  
51  
52  
53  
54  
55  
56  
57  
58  
59  
60



254x190mm (96 x 96 DPI)

Review

1  
2  
3  
4  
5  
6  
7  
8  
9  
10  
11  
12  
13  
14  
15  
16  
17  
18  
19  
20  
21  
22  
23  
24  
25  
26  
27  
28  
29  
30  
31  
32  
33  
34  
35  
36  
37  
38  
39  
40  
41  
42  
43  
44  
45  
46  
47  
48  
49  
50  
51  
52  
53  
54  
55  
56  
57  
58  
59  
60

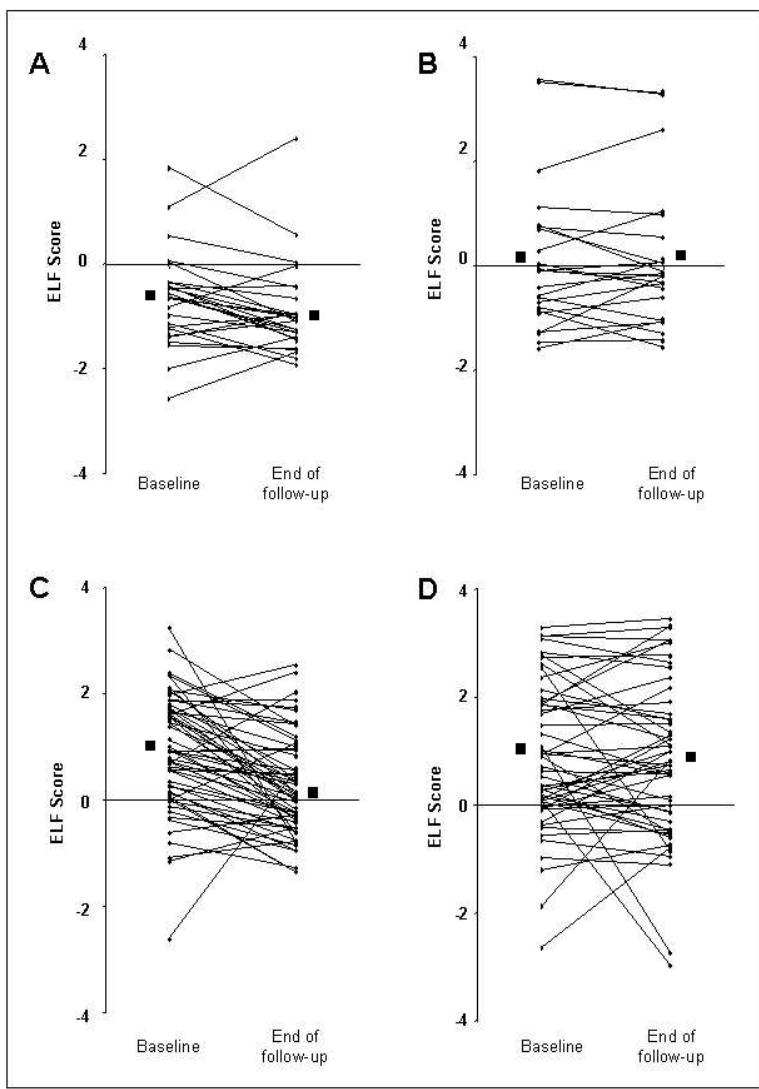


254x190mm (96 x 96 DPI)

Review



1  
2  
3  
4  
5  
6  
7  
8  
9  
10  
11  
12  
13  
14  
15  
16  
17  
18  
19  
20  
21  
22  
23  
24  
25  
26  
27  
28  
29  
30  
31  
32  
33  
34  
35  
36  
37  
38  
39  
40  
41  
42  
43  
44  
45  
46  
47  
48  
49  
50  
51  
52  
53  
54  
55  
56  
57  
58  
59  
60



190x254mm (96 x 96 DPI)

**STARD checklist for reporting of studies of diagnostic accuracy**  
(version January 2003)

Section and Topic	Item #		On page #
TITLE/ABSTRACT/ KEYWORDS	1	Identify the article as a study of diagnostic accuracy (recommend MeSH heading 'sensitivity and specificity').	2
INTRODUCTION	2	State the research questions or study aims, such as estimating diagnostic accuracy or comparing accuracy between tests or across participant groups.	3, 4
METHODS			
<i>Participants</i>	3	The study population: The inclusion and exclusion criteria, setting and locations where data were collected.	4
	4	Participant recruitment: Was recruitment based on presenting symptoms, results from previous tests, or the fact that the participants had received the index tests or the reference standard?	4
	5	Participant sampling: Was the study population a consecutive series of participants defined by the selection criteria in item 3 and 4? If not, specify how participants were further selected.	4
	6	Data collection: Was data collection planned before the index test and reference standard were performed (prospective study) or after (retrospective study)?	4, 5
<i>Test methods</i>	7	The reference standard and its rationale.	5
	8	Technical specifications of material and methods involved including how and when measurements were taken, and/or cite references for index tests and reference standard.	5, 6, 7
	9	Definition of and rationale for the units, cut-offs and/or categories of the results of the index tests and the reference standard.	5, 6, 7
	10	The number, training and expertise of the persons executing and reading the index tests and the reference standard.	5, 6, 7
	11	Whether or not the readers of the index tests and reference standard were blind (masked) to the results of the other test and describe any other clinical information available to the readers.	5, 6, 7
<i>Statistical methods</i>	12	Methods for calculating or comparing measures of diagnostic accuracy, and the statistical methods used to quantify uncertainty (e.g. 95% confidence intervals).	6, 7
	13	Methods for calculating test reproducibility, if done.	
RESULTS			
<i>Participants</i>	14	When study was performed, including beginning and end dates of recruitment.	4
	15	Clinical and demographic characteristics of the study population (at least information on age, gender, spectrum of presenting symptoms).	22
	16	The number of participants satisfying the criteria for inclusion who did or did not undergo the index tests and/or the reference standard; describe why participants failed to undergo either test (a flow diagram is strongly recommended).	8, 11
<i>Test results</i>	17	Time-interval between the index tests and the reference standard, and any treatment administered in between.	4, 5
	18	Distribution of severity of disease (define criteria) in those with the target condition; other diagnoses in participants without the target condition.	22
	19	A cross tabulation of the results of the index tests (including indeterminate and missing results) by the results of the reference standard; for continuous results, the distribution of the test results by the results of the reference standard.	23, 24
	20	Any adverse events from performing the index tests or the reference standard.	
<i>Estimates</i>	21	Estimates of diagnostic accuracy and measures of statistical uncertainty (e.g. 95% confidence intervals).	23, 24
	22	How indeterminate results, missing data and outliers of the index tests were handled.	7, 8
	23	Estimates of variability of diagnostic accuracy between subgroups of participants, readers or centers, if done.	7, 8
	24	Estimates of test reproducibility, if done.	

1  
2  
3  
4  
5  
6  
7  
8  
9  
10  
11  
12  
13  
14  
15  
16  
17  
18  
19  
20  
21  
22  
23  
24  
25  
26  
27  
28  
29  
30  
31  
32  
33  
34  
35  
36  
37  
38  
39  
40  
41  
42  
43  
44  
45  
46  
47  
48  
49  
50  
51  
52  
53  
54  
55  
56  
57  
58  
59  
60

DISCUSSION	25	Discuss the clinical applicability of the study findings.	12-15
------------	----	---	-------

For Peer Review