



**HAL**  
open science

## Analysis of 5-methyltetrahydrofolate in human blood, serum and urine by on-line coupling of capillary isotachopheresis and zone electrophoresis

Pavla Pantuckova, Ludmila Krivankova

### ► To cite this version:

Pavla Pantuckova, Ludmila Krivankova. Analysis of 5-methyltetrahydrofolate in human blood, serum and urine by on-line coupling of capillary isotachopheresis and zone electrophoresis. *Electrophoresis*, 2010, 31 (20), pp.3391. 10.1002/elps.201000193 . hal-00599466

**HAL Id: hal-00599466**

**<https://hal.science/hal-00599466>**

Submitted on 10 Jun 2011

**HAL** is a multi-disciplinary open access archive for the deposit and dissemination of scientific research documents, whether they are published or not. The documents may come from teaching and research institutions in France or abroad, or from public or private research centers.

L'archive ouverte pluridisciplinaire **HAL**, est destinée au dépôt et à la diffusion de documents scientifiques de niveau recherche, publiés ou non, émanant des établissements d'enseignement et de recherche français ou étrangers, des laboratoires publics ou privés.



**Analysis of 5-methyltetrahydrofolate in human blood, serum and urine by on-line coupling of capillary isotachopheresis and zone electrophoresis**

Journal:	<i>Electrophoresis</i>
Manuscript ID:	elps.201000193.R2
Wiley - Manuscript type:	Research Paper
Date Submitted by the Author:	28-Jun-2010
Complete List of Authors:	Pantuckova, Pavla; Inst. Anal. Chem. Krivankova, Ludmila; Institute of Anal. Chem.
Keywords:	hyphenation of capillary isotachopheresis and zone electrophoresis, 5-methyltetrahydrofolate, human serum, human blood, human urine



1  
2  
3 **Analysis of 5-methyltetrahydrofolate in human blood, serum and urine by**  
4 **on-line coupling of capillary isotachopheresis and zone electrophoresis**  
5  
6  
7  
8  
9

10  
11  
12  
13 Pavla Pantůčková and Ludmila Křivánková  
14  
15

16  
17  
18 Institute of Analytical Chemistry of the ASCR, v. v. i., Brno, Czech Republic  
19  
20

21  
22  
23 **Correspondence:** Professor Ludmila Křivánková, Institute of Analytical Chemistry of the  
24  
25 ASCR, v. v. i., Veveří 97, 602 00 Brno, Czech Republic  
26

27  
28 E-mail: [krivankova@iach.cz](mailto:krivankova@iach.cz)  
29

30  
31 Phone: +420 532 290 183  
32

33  
34 Fax: +420 541 212 113  
35  
36  
37  
38  
39

40 **Abbreviations:**

41  
42 **CITP-CZE**, on-line combination of capillary isotachopheresis with capillary zone  
43  
44 electrophoresis; **EACA**,  $\epsilon$ -aminocaproic acid; **FA**, folic acid, **FEP**, fluorinated ethylene-  
45  
46 propylene copolymer; **HPC**, hydroxypropylcellulose; **MFA**, methylfolate; **5-MTHF**, 5-  
47  
48 methyltetrahydrofolate; **LE**, leading electrolyte; **TE**, terminating electrolyte; **ZED**, zone  
49  
50 existence diagram  
51  
52  
53  
54  
55  
56  
57

58  
59 **Keywords:** Hyphenation of capillary isotachopheresis and zone electrophoresis/ 5-  
60 methyltetrahydrofolate/ Human blood/ Human serum/ Human urine /

**Abstract**

The predominant circulating folate coenzyme in plasma/serum, 5-methyltetrahydrofolate (5-MTHF) was determined in human blood, serum and urine using a method based on hyphenation of capillary isotachopheresis and zone electrophoresis. Measurements were done with a commercially available instrument for capillary isotachopheresis equipped with a column-switching system. The choice of electrolytes was limited by the instability of 5-MTHF and volatility of electrolytes for the potential coupling of the instrumentation with MS detector. To get an insight into the separability of individual sample components in an isotachopheretic analysis we constructed zone existence diagrams for isotachopheretic electrolyte systems having a leading electrolyte composed of acetate and ammonium of pH 4.5 and 7.0, hydrocarbonate and ammonium, pH 7.8, chloride and ammonium, pH 5.6, and chloride and creatinine, pH 5.0, with hydroxide ion as the terminator. For isotachopheretic prepreparation, the non-volatile leading electrolyte with good buffering capacity composed of  $1 \times 10^{-2}$  M HCl and  $2.5 \times 10^{-2}$  M creatinine, pH 5.0, and terminating electrolyte composed of  $1 \times 10^{-2}$  M MES were selected as the most suitable. The optimum background electrolyte for CZE analysis from the standpoint of analyte stability, separability and volatility for MS coupling was  $1 \times 10^{-2}$  M acetate with  $3.5 \times 10^{-2}$  M ammonium, pH 4.5. Using this combination of electrolytes, LODs reached with optical detection at 220 nm were  $1.6 \times 10^{-7}$  M in human blood,  $1.1 \times 10^{-7}$  M in human serum, and  $4.7 \times 10^{-6}$  M in human urine. Estimated content of 5-MTHF in blood and serum samples of women following oral daily administration of 0.8 mg of folic acid was  $1.2 \times 10^{-5}$  M and  $5.8 \times 10^{-6}$  M, resp.

## 1 Introduction

Folic acid, (FA, vitamin B9, pteroylmonoglutamic acid), is essential in many bodily functions ranging from nucleotide synthesis to the remethylation of homocysteine. It affects rapidly dividing cells, particularly those of the bone marrow, and its deficiency can lead to megaloblastic erythropoiesis and anemia [1, 2]. Women are advised to take supplements of FA prior to conception and for the first 12 weeks of pregnancy to prevent neural tube defects to the fetus such as spina bifida and Down syndrome. [3-5]. Folate deficiency can lead to raised homocysteine level, which has now been identified as a risk factor for cardiovascular disease [6, 7]. Furthermore, low folate levels have been associated with certain cancers (notably colorectal and colon) [8, 9], with Alzheimer's disease in the elderly [10], and also with all types of dementia [7]. 5-MTHF is the predominant circulating folate coenzyme in plasma/serum [11-16] and its quantitative determination is one of several factors used in the diagnosis of folate deficiency.

Knowledge of the 5-MTHF chemical stability is necessary when its determination is intended. For prevention and treatment, FA is the form used in tablets and fortified foods because it is the most stable form of this vitamin. After ingestion, various kinds of folate were found in serum and plasma, e.g., 5-MTHF, 5-formyltetrahydrofolate, 4- $\alpha$ -hydroxy-5-methyltetrahydrofolate, p-aminobenzoylglutamate, 5-methyl-5,6-dihydrofolate, and even the free form of FA [17, 18]. 5-MTHF has been directly utilized, e. g., in patients with coronary artery disease [6, 19], familial hypercholesterolemia [20], end-stage renal disease [21, 22], in uremic patients on convective hemodialysis [23], and also suggested in the treatment of colorectal cancer [24, 25]. The determination of 5-MTHF in plasma is also an important method for the assessment of the systemic availability of the active folates after leucovorin administration [26].

1  
2  
3 The concentration of folates in biological fluids is usually very low (around  $1-2 \times 10^{-8}$  mol/L  
4 of plasma in a healthy adult). Moreover, natural folates are sensitive to heat, light, low and  
5 high pH, and have a tendency to interconvert so these facts make quantification difficult [11].  
6  
7  
8 Owing to high sensitivity, microbiological assay or immunoassay (radioassay) still is the  
9  
10 method of choice for the determination of food folates despite the fact that it is extremely  
11  
12 laborious and provides only a sum total of folate forms [27, 28]. Folate extraction must  
13  
14 precede the assays [29-31]. Moreover, neither of these techniques is specific for 5-MTHF and,  
15  
16 in fact, both assays estimate “total folate“, which is a nonspecific folate measurement. A  
17  
18 number of liquid chromatography methods with different types of detection for determination  
19  
20 of 5-MTHF and other individual folate forms have been reported [14, 15, 27, 32-44]. LC/MS  
21  
22 was used for determination of 5-MTHF in several works [11-13, 16, 45, 46] with sufficient  
23  
24 level of LOD. A pre-separation step by, e.g., affinity extraction [11, 13, 39], extraction [42],  
25  
26 SPE [12, 14, 15, 45], extraction and deconjugation [41], ultrafiltration [46] or deproteinization  
27  
28 [16, 37, 38, 44] was always involved. Using extraction and SPE sample pretreatment, as low  
29  
30 LODs as 0.07 ng/mL [27] or even 2 pg per injection of food extract [40] have been reported.  
31  
32 Analysis of 5-MTHF in human urine by LC methods has been published in [11, 15]. Capillary  
33  
34 electrophoresis with cyclodextrins as chiral selectors for 5-MTHF and leucovorin  
35  
36 determination in human plasma was reported by Shibukawa et al. [47] but the sensitivity of  
37  
38 the detection method was not adequate for its routine use.

39  
40 The aim of this work was to develop a method based on electrophoretic techniques that could  
41  
42 be combined with MS detection. Tandem arrangement of isotachopheresis with  
43  
44 isotachopheresis or zone electrophoresis makes it possible to clean-up the sample and to  
45  
46 enhance the concentration of the analyte. A crucial parameter for successful analysis by  
47  
48 CITP-CITP or CITP-CZE combination is the selection of the electrolyte system that affects  
49  
50 both separability of analytes and sensitivity of the method. The electrolyte system applied for  
51  
52  
53  
54  
55  
56  
57  
58  
59  
60

determination of 5-MTHF has to ensure stability of the analyte, its separation from serum components and sensitive and unambiguous detection. Above and beyond these demands, and for purposes of combining with MS, the electrolyte system has to be volatile, which limits the supply of electrolytes to free formic, acetic and carbonic acids and their volatile salts.

## 2 Materials and methods

### 2.1 Chemicals, reagents, and origin of samples

All chemicals used were of the highest analytical purity. Ammonium hydroxide, ascorbic acid, 5-methyltetrahydrofolic acid disodium salt (5-MTHF), Good's buffers [48]: MES, HEPES, TES (N-tris[hydroxymethyl]methyl-2-aminoethanesulfonic acid), MOPS, BES (N,N-bis[2-hydroxyethyl]-2-aminoethanesulfonic acid), HEPPSO (N-2-[hydroxyethyl]piperazine-N'-[hydroxypropanesulfonic acid]), MOPSO (3-[N-morpholino]-2-hydroxypropanesulfonic acid), ADA (N-[2-acetamido]-2-iminodiacetic acid), ammonium acetate, creatinine and histidine were from Sigma (St. Louis, MO, USA). Hydroxypropylcellulose (HPC) was from Ega (Steinheim/Albuch, Germany), 2-(4-sulfophenylazo)chromotropic acid trisodium salt (SPADNS), and all other chemicals were from Lachema Chemapol (Brno, Czech Republic). Deionized water prepared by trapping ions in a mixed-bed ion exchanger by an aqua purificator G 7749 (Miele, Gütersloh, Germany) was used for the preparation of all solutions. A standard  $2 \times 10^{-2}$  M solution of 5-MTHF was prepared from powder added to water with/without an antioxidant immediately prior to use. The concentration of hydrazine and ascorbic acid in the stock solution of 5-MTHF was  $5 \times 10^{-3}$  M. The stock solutions were divided into 50  $\mu$ L aliquots and stored in 1-mL Eppendorf sample tubes at  $-20$  °C until use. Electrolytes for the CZE experiment were prepared by mixing 1 M acetic acid with 0.1 M ammonium

1  
2  
3 acetate stock solution. Electrolytes for CITP were prepared every day from freshly boiled  
4 water and were protected from the atmosphere. To suppress electroosmotic flow (EOF), HPC  
5 was added to electrolyte solutions [49]. Carbon dioxide dissolved in terminator was  
6 precipitated with 0.1 M barium hydroxide that was used to adjust its pH value. All electrolyte  
7 systems used in this study are summarized in Table 1.

8  
9  
10 The standard lyophilized serum (Sigma, St. Louis, MO, USA) was reconstituted with 1 mL of  
11 deionized water. Human blood samples of healthy volunteers and of women following oral  
12 administration of 0.8 mg of FA daily (as recommended for pregnant women or those planning  
13 pregnancy) were collected and diluted according to need immediately with the anticoagulant  
14 agent EDTA to a final concentration of 2.0 mg/mL of blood. No EDTA was added when the  
15 blood samples were left to start clotting for serum preparation. Urine samples were diluted  
16 with deionized water and analyzed directly without any pretreatment. To prevent 5-MTHF  
17 decomposition, all body fluid samples were diluted with deionized water containing hydrazine  
18 to reach the final  $5 \times 10^{-3}$  M hydrazine concentration, and with regard to blood samples also  
19 containing EDTA, see above.  
20  
21  
22  
23  
24  
25  
26  
27  
28  
29  
30  
31  
32  
33  
34  
35  
36  
37  
38  
39  
40  
41  
42

## 43 2.2 Instrumentation

44  
45  
46 The CS Isotachophoretic Analyzer EA 100 Villa Labeco (Spišská Nová Ves, Slovakia)  
47 equipped with a column switching system was used for CITP and CITP-CZE measurements.  
48 The capillary used for CITP separations was made of fluorinated ethylene-propylene  
49 copolymer (FEP) with the internal diameter (id) of 0.8 mm; its total length was 90 mm, while  
50 the effective length to the conductivity detector was 52 mm and the distance between the  
51 detector and the bifurcation point was 38 mm. Id. of the CZE capillary (made of FEP,  
52  
53  
54  
55  
56  
57  
58  
59  
60



1  
2  
3 equipped with both conductivity and spectrophotometric detectors) was 0.3 mm; its total  
4  
5 length was 160 mm, the effective length to the detection window was 140 mm. For UV  
6  
7 detection, a spectrophotometric detector LCD 2083 ECOM (Prague, Czech Republic) was  
8  
9 used and set at 220 nm.  
10  
11

12 Samples were injected with a 10  $\mu\text{L}$  microsyringe (Hamilton, Bonaduz, Switzerland).  
13  
14 Constant current 100-450  $\mu\text{A}$  and 50-100  $\mu\text{A}$  was used for the CITP and CZE separation  
15  
16 steps, respectively. Voltage range was 1500-3600 V for the CITP step and 2500-3500 V for  
17  
18 the CZE step. After the front boundary of the sample cut selected for further analysis in CZE  
19  
20 mode reached the conductivity detector in the CITP step, migration continued towards the  
21  
22 auxiliary electrode for an additional 250-270 seconds (precise timing was checked every day  
23  
24 with a red dye SPADNS). This time corresponds to the moment when the part of sample  
25  
26 zones containing 5-MTHF is located in the bifurcation point and the front part of the sample  
27  
28 zones had moved toward the auxiliary electrode. After switching the current through  
29  
30 terminating and BGE electrode in the CZE capillary, the selected sample cut followed by the  
31  
32 terminator continues in migration into the second capillary filled with BGE. Conditions for  
33  
34 CZE migration in BGE-S-BGE system [50] are created and the analysis continues for next  
35  
36 300 seconds with the current decreased to 40  $\mu\text{A}$ . At this time, the rear boundary of the  
37  
38 sample cut enters the CZE capillary, the current is switched off and the terminating electrolyte  
39  
40 (TE) in the CITP capillary is substituted with BGE. Afterwards, the current of the proper  
41  
42 value 50-100  $\mu\text{A}$  is switched on again over both capillaries and the analysis continues in the  
43  
44 BGE-S-BGE system [50].  
45  
46  
47  
48  
49  
50  
51  
52

53 For single CZE experiments, an automated capillary electrophoresis instrument P/ACE 5010  
54  
55 (Beckman Instruments, Fullerton, CA, USA) equipped with either UV detector (214 nm) or  
56  
57 diode array detector (DAD, wavelength range 190-600 nm) was used. With the DAD detector  
58  
59 the absorption spectrum of 5-MTHF as well as FA was measured within the range of 200-360  
60

1  
2  
3 nm. Absorption maxima of 5-MTHF are at 200, 220 and 290 nm while FA has maxima at 200  
4  
5 and 240 nm. Electrophoretic separations were performed in a fused-silica capillary of 27/20  
6  
7 cm total/effective length, 0.1 mm id (Composite Metal Services, The Chase, Hallow, UK).  
8  
9 Prior to the first use, the bare capillary was treated as described in [51]. Each day before  
10  
11 measurements, the capillary was washed only with BGE for 0.5 min at 20 psi (137.89 kPa).  
12  
13 For measurements of 5-MTHF in anionic form the analyses were performed with cathode at  
14  
15 the injection side. Thermostating temperature was 25°C. Samples were injected for 5 s with  
16  
17 pressure of 0.5 psi (3.45 kPa). All measurements were performed at a constant voltage. EOF  
18  
19 was measured with mesityl oxide (dilution 1:500, detection at 254 nm) with anode at the  
20  
21 injection side and obtained values were within the range  $2.4 - 3.6 \times 10^{-9} \text{ m}^2\text{V}^{-1}\text{s}^{-1}$ . Data were  
22  
23 processed using software supplied by the producer of the instrument or by ITP WIN Software.  
24  
25 For construction of zone existence diagrams (ZED), pH and effective mobilities were  
26  
27 calculated using RFQ function published by Beckers and Everaerts [52]. ZEDs were  
28  
29 introduced and their plotting is described in detail in [53, 54]. For parametrically selected pK  
30  
31 and ionic mobilities the adjusted pH in the isotachophoretic zone of such a defined component  
32  
33 as well as its effective mobility is calculated and plotted for a given leading electrolyte.  
34  
35 Values of pK and ionic mobilities used in calculations are given in Table 2. For 5-MTHF the  
36  
37 pK and mobility values estimated for MFA [55] were used as they fitted well with  
38  
39 experimentally reached results for 5-MTHF.  
40  
41  
42  
43  
44  
45  
46  
47  
48  
49  
50  
51  
52

### 53 **3 Results and discussion**

#### 54 **3.1. Stability of 5-MTHF**

55  
56  
57  
58  
59  
60

To avoid loss of 5-MTHF due to its chemical degradation that could lead to false results, its chemical stability was checked in acidic and neutral pH range by both CITP and CZE methods. Preliminary tests revealed that 5-MTHF rapidly decomposes at slightly acidic pH starting at pH 3.6 (Table 1, electrolyte system No.2). By CITP, the pH range 4.5 - 6.5 (Table 1, electrolyte systems No.3-5), was tested in more detail. Tests at higher pH were not performed as above the pH 6.5 disturbing hydrocarbonate zone appeared in the system resulting from dissolved atmospheric CO<sub>2</sub>. Measurements in the tested area were performed with 5-MTHF dissolved in water in the absence and presence of an antioxidant. We tested ascorbic acid that was frequently used in other analytical methods to determine 5-MTHF [11-14, 27, 33-35, 37-39, 41]. To get an observable effect, a relatively high concentration of ascorbic acid had to be added to the sample solution ( $5 \times 10^{-3}$  M –  $5.6 \times 10^{-2}$  M), which resulted in a long zone migrating in the same direction as the analyte thereby decreasing the sample loadability. Therefore, we tested another agent, hydrazine, which is positively charged in the tested pH range and migrates to the cathode (pKa = 8.1 [56]). A  $5 \times 10^{-3}$  M hydrazine in the sample solution was proven to ensure satisfying prevention of 5-MTHF decomposition for several days. The preventive effect of hydrazine was tested also by CZE in BGEs containing  $1 \times 10^{-2}$  M acetate + ammonium + 0.005% HPC, pH 4.0 - 5.8. Degradation was observed at pH 4 and lower even in the presence of hydrazine, however, within pH 4.5 – 5.8 a constant 5-MTHF concentration was observed in the presence of  $5 \times 10^{-3}$  M hydrazine even when the solution was kept at room temperature (data not shown). In all the following measurements samples containing 5-MTHF were stabilized with hydrazine, prepared fresh every day, and optimum separation conditions were searched within the pH range 4.5 - 5.8.

### 3.2 Selection of electrolyte systems

1  
2  
3  
4  
5  
6 The CITP-CZE hyphenated technique was described in more detail previously, e.g. in [57-  
7  
8 67]. Using this method, the original injected sample is cleaned twice. First, only ionic  
9  
10 components of mobilities between the mobilities of leading and terminating ions can migrate  
11  
12 in the CITP step. Second, only a selected segment of isotachophoretically migrating zones is  
13  
14 analyzed in the CZE step [67]. Success of the analysis depends both on a suitable electrolyte  
15  
16 selection for CITP and CZE steps, and on proper current switching (sample cutting).  
17  
18  
19  
20  
21  
22  
23  
24

### 25 **3.2.1 Selection of electrolyte systems for isotachopheresis**

26  
27  
28  
29 When selecting electrolyte systems for isotachopheresis, a suitable mobility window is  
30  
31 searched for that ensures migration of analytes of interest between the fastest leading ion and  
32  
33 slowest terminating ion. No care is taken of compounds that migrate either faster or slower  
34  
35 outside this window. pK and ionic mobilities of components of analyzed matrices that are  
36  
37 important from the point of analysis of 5-MTHF in blood, serum and urine are listed in Table  
38  
39 2. For ions of weak acids, pH of LE should ensure sufficient ionization as well as differences  
40  
41 in effective mobilities of sample components. Disturbance resulting from the penetration of  
42  
43 fast  $H^+$  or  $OH^-$  ions should be eliminated by proper selection of the electrolyte system  
44  
45 including its buffering capacity. Here, we put additional demand on the electrolyte system,  
46  
47 i.e., its volatility, to enable potential hyphenation of CITP with MS.  
48  
49  
50  
51

52  
53 For cationic analyses performed by CITP-MS, the most often used electrolyte system is  
54  
55 composed of ammonium acetate as LE and acetic acid as TE [68]. Here, ammonium is the  
56  
57 leading ion and  $H^+$  is the real terminator, acetate being the buffering counter ion. This also  
58  
59 applies to systems with formic or carbonic acid systems – formate or carbonate serving as  
60

1  
2  
3 counter ions. We looked in detail into the systems where anions of these acids should serve as  
4  
5 leading ions with ammonium acting as a counter ion. After our consideration we used  
6  
7 calculations of pH and effective mobilities of both pure and mixed zones based on the RFQ  
8  
9 function [52], and constructed ZEDs [53, 54] for individual electrolyte systems (see also  
10  
11 Section 2.2). We used this approach for a practical reason. When pH of electrolytes was set  
12  
13 by adding ammonium hydroxide, a significant zone of hydrocarbonate appeared in the  
14  
15 system. Contrary to CZE where BGE can be composed of more than one coion, which is often  
16  
17 used in analyses with indirect optical detection, in CITP from the principle of the separation  
18  
19 process it follows that each component of the leading and terminating electrolytes creates its  
20  
21 own zone. We discovered that presence of hydrocarbonate in LE or TE leads not only to  
22  
23 formation of its own zone but also to formation of mixed zones. These zones cannot simply  
24  
25 be recognized and false results can easily be obtained. We have constructed ZEDs for volatile  
26  
27 leading electrolytes composed of acetate and ammonium,  $\text{pH}_{\text{LE}} 4.5 - 7.0$ , and hydrocarbonate  
28  
29 and ammonium, pH 7.8, a semi-volatile leading electrolyte composed of chloride and  
30  
31 ammonium, pH 5.6, and non-volatile leading electrolyte composed of chloride and EACA,  
32  
33 creatinine, or histidine, pH 4.5 – 5.8. ZEDs for selected electrolyte systems are presented in  
34  
35 Fig. 1. For any analyte migrating isotachophoretically between leading and terminating ions  
36  
37 its effective mobility as well as pH in its zone can be found on axes y and x, respectively.  
38  
39 Analytes that do not migrate isotachophoretically in the electrolyte system can easily be  
40  
41 disclosed because points defined by their ionic mobility and  $\text{p}K$  are out of the ZED net. ZED  
42  
43 also shows the migration order of analytes and for a selected analyte X the set of analytes Y  
44  
45 that will create steady-state mixed zones with X can also be found by calculating two curves  
46  
47 expressing equalities  $\bar{u}_{Y, X} = \bar{u}_{X, X}$  and  $\bar{u}_{X, Y} = \bar{u}_{Y, Y}$  where  $\bar{u}_{X, Y}$  is the effective mobility of a  
48  
49 substance X in the zone Y.  
50  
51  
52  
53  
54  
55  
56  
57  
58  
59  
60

1  
2  
3 Fig. 1A shows ZED for pH 4.5 (LE composed of  $1 \times 10^{-2}$  M acetate +  $3.5 \times 10^{-3}$  M  
4 ammonium) where chloride and lactate do not migrate isotachophoretically, and the points  
5 corresponding to their zones are outside the margin contours of the ZED (see lactate point in  
6 Fig. 1A). The grey area shows the group of analytes that will create mixed zones with  
7 hydrocarbonate when it will be present either in the sample or in the electrolyte system.  
8 Hydrocarbonate formed a mixed zone also with MES that was aimed to be used as a potential  
9 terminator. The effective mobility of the mixed zone was  $-9.8 \times 10^{-9} \text{ m}^2 \text{ V}^{-1} \text{ s}^{-1}$ , i.e., even higher  
10 than that of the analyte. As hydrocarbonate appeared in the system always when electrolyte  
11 systems were prepared using ammonium hydroxide and its elimination by barium hydroxide  
12 was powerless, electrolyte systems should be prepared directly by dissolving solid salts in  
13 water.  
14

15  
16  
17  
18  
19  
20  
21  
22  
23  
24  
25  
26  
27  
28  
29 By dissolving directly ammonium acetate in freshly prepared deionized water we get pH 7.0.  
30  
31  
32  
33  
34  
35  
36  
37  
38  
39  
40  
41  
42  
43  
44  
45  
46  
47  
48  
49  
50  
51  
52  
53  
54  
55  
56  
57  
58  
59  
60  
At this pH value, however, carbon dioxide can easily be absorbed and acetate itself will create  
a mixed zone with hydrocarbonate. This holds also for some other sample components, e.g.,  
lactate, and the system is very sensitive to the content of hydrocarbonate (see Fig. 1B). ZED  
for chloride-creatinine system, pH 5.0, is shown in Fig. 1C. Evidently, in the leading  
electrolyte with chloride as leader and creatinine as counter-ion there is only a very small set  
of analytes that can create mixed zones with hydrocarbonate which is not expected to appear  
in the slightly acidic system. This system was found to be optimal for 5-MTHF determination  
by CITP, where both analyte decomposition and disturbing mixed zones were minimized.  
This electrolyte system was used for isotachophoretic determination of 5-MTHF in serum  
diluted 1:5; LOD obtained was  $4 \times 10^{-5}$  M. However, we did not consider this analysis  
sensitive enough and decided to use CITP in the buffered non-volatile electrolyte system only  
for simplification and clean-up of the sample. We introduced CZE as further separation step.

### 3.2.2 Selection of electrolyte systems for CZE appended to CITP

For the pH range suitable for determination of 5-MTHF from the point of its stability (pH 4.5–5.8), BGEs composed of acetate as the coion and varying concentrations of ammonium as the counter-ion were tested in CZE mode. When a BGE system totally differs from the composition of electrolytes used as LE or TE in CITP, very precise current switching between CITP and CZE capillaries is required. Such electrolyte combination was described as BGE-S-BGE [50, 67].

The precise time ensuring removal of the major front part of the sample bulk components by CITP in the first capillary had to be checked every day using a red dye SPADNS (see Section 2.2). With SPADNS, the time interval was found for the analyte to move from the detection window to the bifurcation point. Then, the time interval when the current was switched over both capillaries enabling the important sample cut to enter the second capillary filled with BGE had to be found. The time needed for the transfer of the whole sample cut into the second analytical capillary was estimated experimentally. After this, the voltage was switched off and TE filling now the first capillary was washed out and substituted with BGE identical with the BGE filling the second capillary. Finally, the proper current was switched on between electrodes in vessels containing originally TE and BGE and the analysis in CZE mode continued. The peak area of 5-MTHF was constant on condition that the whole sample cut containing 5-MTHF was transferred into the second capillary. If the time for the CITP step was set too long the part of the sample containing 5-MTHF had moved towards auxiliary electrode and the analyte peak area was lower. If this time was too short, 5-MTHF could be flushed out when the first capillary was cleaned and filled with BGE or its concentration could be decreased. If too long a time was set for the zone transfer, too long part of the

1  
2  
3 terminating zone was transferred into the analytical capillary with pronounced effect on  
4 migration time and peak shape as well. Also an impact on the sensitivity of MS detection  
5 caused by a long zone of nonvolatile TE moving to the MS detector would be undesirable.  
6  
7

8  
9  
10 After the precise time switching was set for each tested system, model as well as real serum  
11 samples were tested. The experiments with real serum samples revealed some problems that  
12 could not be deduced in model samples composed of a defined but not varying concentrations  
13 of serum macrocomponents such as phosphate, lactate, urate, and acetate. At pH 5.8, (close to  
14 pH of acetate zone adjusted in preceding CITP step), where promising results with model  
15 samples were reached, increased concentration of urate found in some serum samples resulted  
16 in comigration with 5-MTHF zone. Sufficient separation of 5-MTHF from urate was achieved  
17 at pH 5.0, however, resolution of 5-MTHF from another unknown serum component was  
18 lower than 1. The best results were obtained at pH 4.5, where reliable migration window for  
19 5-MTHF was ensured. The most suitable electrolyte combination, LE composed of  $1 \times 10^{-2}$  M  
20 HCl +  $2.5 \times 10^{-2}$  M creatinine + 0.005% HPC, pH 5.0, TE composed of  $1 \times 10^{-2}$  M MES and  
21 BGE composed of  $1 \times 10^{-2}$  M acetate +  $3.5 \times 10^{-3}$  M ammonium + 0.005% HPC, pH 4.5, was  
22 used for determination of 5-MTHF in real samples.  
23  
24  
25  
26  
27  
28  
29  
30  
31  
32  
33  
34  
35  
36  
37  
38  
39  
40  
41  
42

### 43 **3.3 Real sample analysis of human blood, serum and urine**

44  
45  
46  
47  
48 The optimized electrolyte system of the BGE-S-BGE mode was used for qualitative and  
49 quantitative analyses of 5-MTHF in real samples. Body fluid samples were collected and  
50 handled as described in paragraph 2.1. Traces of analyses of human blood, serum and urine  
51 are presented in Figs. 2-4. The concentration of 5-MTHF in the samples of human blood,  
52 serum or urine from the healthy volunteers was under LOD. Human blood of a volunteer  
53 consuming daily 0.8 mg of FA was analyzed during one week and the blood was collected  
54  
55  
56  
57  
58  
59  
60



1  
2  
3 always 2 hours after FA consumption. In Fig. 2, the estimated 5-MTHF concentration in the  
4 injected sample of 5times diluted blood was  $2.4 \times 10^{-6}$  M that corresponds to  $1.2 \times 10^{-5}$  M in  
5 the original blood sample. CZE record of human serum of a volunteer with the same dosage  
6 and collection of FA can be seen in Fig. 3. A 5-MTHF concentration in the 5times diluted  
7 sample was  $1.2 \times 10^{-6}$  M, which corresponds to  $6.0 \times 10^{-6}$  M in serum. In this matrix we also  
8 verified separation of 5-MTHF from FA. Mobilities of FA and 5-MTHF differ substantially  
9 and no comigration was imminent (data not shown). Identification of FA and 5-MTHF peaks  
10 was performed also by their absorption spectra in UV region, see Section 2.2.

11  
12 We applied the elaborated method also for the analysis of human urine samples and obtained  
13 a good resolution of 5-MTHF also in this very complex matrix (Fig. 4). A 5-MTHF  
14 concentration in a sample of 5times diluted urine of a volunteer following the same dosage of  
15 FA as mentioned above was under LOD (Fig. 4, trace a). In trace b, Fig. 4, a well developed  
16 peak of 5-MTHF is seen when the same urine sample is spiked with  $5 \times 10^{-5}$  M 5-MTHF.

17  
18 Parameters for quantitative analysis of 5-MTHF standard and 5-MTHF in real samples are  
19 summarized in Table 3. Human blood, serum and urine were diluted 1:5 and analyzed directly  
20 without any pretreatment. Calibration curves for standard 5-MTHF analyte and for real  
21 samples were constructed for the concentration range of  $1 \times 10^{-5}$  M –  $5 \times 10^{-7}$  M. LOD values  
22 and intra-day and inter-day RSD for peak area are presented in this table as well.

#### 23 24 25 26 27 28 29 30 31 32 33 34 35 36 37 38 39 40 41 42 43 44 45 46 47 48 49 50 51 **4 Concluding remarks**

52  
53  
54  
55 A method for tandem arrangement of capillary ITP with zone electrophoresis and UV  
56 detection was elaborated for human body fluids: blood, serum and urine. CITP-CZE  
57 combination enabled an effective clean-up of the sample and lowering LOD. A detailed  
58  
59  
60

1  
2  
3 insight into electrolyte systems including zone existence diagrams made it possible to choose  
4  
5 conditions that are suitable also for MS detection. For the CZE step, a different BGE from  
6  
7 that of LE and TE was used. A 5-MTHF decomposition was prevented by hydrazine added to  
8  
9 the sample. Attained LODs were  $1.6 \times 10^{-7}$  M for human blood,  $1.1 \times 10^{-7}$  M for human  
10  
11 serum, and  $4.7 \times 10^{-7}$  M for human urine. The method is now ready for coupling with an MS  
12  
13 detector; a new interface is being constructed applicable for the commercial apparatus used in  
14  
15 this study.  
16  
17  
18  
19  
20  
21  
22  
23  
24  
25  
26  
27  
28  
29  
30  
31  
32  
33  
34  
35  
36  
37  
38  
39  
40  
41  
42  
43  
44  
45  
46  
47  
48  
49  
50  
51  
52  
53  
54  
55  
56  
57  
58  
59  
60

For Peer Review

**Acknowledgements**

*This work was supported by the Grant Agency of the Czech Republic, grant No 203/08/1536, P206/10/1219 by the Grant Agency of the Academy of Science of the Czech Republic, grant No. IAA 400310703, and by the Institutional Research Plan AV0Z40310501 of the Academy of Sciences of the Czech Republic.*

For Peer Review

## 5 References

- [1] Green, R; Miller, J. W., *Semin Hematol.* 1999, *36*, 47-64.
- [2] Zittoun, J., Zittoun R., *Semin. Hematol.* 1999, *36*, 35-46.
- [3] Palekar, A. G., *Am. J. Obstet. Gynecol.* 2001, *184*, 517-517.
- [4] Van der Put, N. M., Van Straaten, H. W., Trijbels, F. J., Blom, H. J., *Exp. Biol. Med.* 2001, *226*, 243-270.
- [5] Weir, D. G., Scott, J. M., *Nutr. Res. Reviews* 1998, *11*, 311-338.
- [6] Willems, F. F., Boers, G. H. J., Blom, H. J., Aengevaeren, W. R. M., Verheugt, F. W. A., *Br. J. Pharmacol.* 2004, *141*, 825-830.
- [7] Ebly, E. M., Schaefer, J.P., Campbell, N. R. C., Hogan, D. B., *Age Ageing* 1998, *27*, 485-491.
- [8] Giovannucci, E., Stampfer, M. J., Colditz, G. A., Rimm, E. B., Trichopoulos, D., Rossner, B. A., Speizer, F. E., Willet, W. C., *J. Natl. Cancer Inst.* 1993, *85*, 875-884.
- [9] Mason, J. B., *J. Nutr. Biochem.* 1994, *5*, 170-175.
- [10] Wang, H.-X; Wahlin, Å., Basun, H, Fastbom, J, Winblad, B, Fratiglioni, L., *Neurology* 2001, *56*, 1188-1194.
- [11] Hart, D. J., Finglas, P. M., Wolfe, C. A., Mellon, F., Wright, A. J. A., Southon, S., *Anal. Biochem.* 2002, *305*, 206-213.
- [12] Nelson, B. C., Pfeiffer, Ch. M., Margolis, S. A., Nelson, Ch. P., *Anal. Biochem.* 2004, *325*, 41-51.
- [13] Nelson, B. C., Pfeiffer, Ch. M., Margolis, S. A., Nelson, Ch. P., *Anal. Biochem.* 2003, *313*, 117-127.
- [14] Chládek, J., Šišpera, L., Martínková, J., *J. Chromatogr. B*, 2000, *744*, 307-313.
- [15] Schleyer, E., Reinhardt, J., Unterhalt, M., Hiddemann, W., *J Chromatogr. B* 1995, *669*, 319-330.

- 1  
2  
3 [16] Garbis, S. D., Melse-Boonstra, A., West, C. E., van Breemen, R. B., *Anal. Chem.*  
4  
5 2001, *73*, 5358-5364.  
6  
7  
8 [17] Rogers, L. M., Pfeiffer, Ch. M., Bailey, L. B., Gregory III, J. F., *J. Nutr.* 1997, *127*,  
9  
10 2321-2327.  
11  
12 [18] Hannisdal, R., Ueland, P. M., Eussen, S. J. P. M., Svardal, A., Hustad, S. *J. Nutr.*  
13  
14 2009, *139*, 1415-1418.  
15  
16  
17 [19] Doshi, S. N., McDowell, I. F. W., Moat, S. J., Lang, D., Newcombe, R. G., Kredan,  
18  
19 M. B., Lewis, M. J., Goodfellow, J., *Arterioscler. Thromb. Vasc. Biol.* 2001, *21*, 1196-  
20  
21 1202.  
22  
23  
24 [20] Verhaar, M. C., Wever, R. M. F., Kastelein, J. J. P., van Dam, T., Koomans, H. A.,  
25  
26 Rabelink, T. J., , *Circulation* 1998, *97*, 237-241.  
27  
28  
29 [21] Baragetti, I., Raselli, S., Stucchi, A., Terraneo, V., Furiani, S., Buzzi, L., Garlaschelli,  
30  
31 K., Alberghini, E., Catapano, A. L., Bucciante, G., *Nephrol. Dial. Transplant* 2007, *22*,  
32  
33 3292-3297.  
34  
35  
36 [22] Cianciolo, G., La Manna, G., Coli, L., Donati, G., Addio, F., Persici, E., Comai, G.,  
37  
38 Wratten, M., Dormi, A., Mantovani, V., Grossi, G., Stefoni, S., *Am. J. Nephrol.* 2008, *28*,  
39  
40 941-948.  
41  
42  
43 [23] Bucciante, G., Raselli, S., Baragetti, I., Bamonti, F., Corghi, E., Novembrino, C.,  
44  
45 Patrosso, C., Maggi, F. M., Catapano, A. L., *Nephrol. Dial. Transplant* 2002, *17*, 857-864.  
46  
47  
48 [24] Mader, R. M., Steger, G. G., Rizovski, B., Djavanmard, M. P., Scheithauer, W.,  
49  
50 Jakesz, R., Rainer, H., *Br. J. Clin. Pharmacol.* 1995, *40*, 209-215.  
51  
52  
53 [25] Valeri, A., Mini, E., Tonelli, P., Veneri, F., Neri, B., Borreli, D., Mazzei, T.,  
54  
55 *Anticancer research* 1994, *14*, 2215-2219.  
56  
57  
58 [26] Priest, D. G., Schmitz, J. C., Bunni, M. A., Stuart, R. K., *J. Natl. Cancer Inst.* 1991,  
59  
60 83, 1806-1812.

- 1  
2  
3 [27] Jasterbova, J., Witthöft, C., Grahn, A., Svensson, U., Jägerstad, M., *Food Chem.* 2003,  
4  
5 80, 579-588.  
6  
7  
8 *J. Nutr. Biochem.* 1998, 9, 285-293.[29] Hyun, T. H., Tamura, T., *Exp. Biol. Med.* 2005,  
9  
10 230, 444-454.  
11  
12 [30] Tamura, T., Mizuno, Y., Johnston, K. E., Jacob, R. A., *J. Agric. Food Chem.* 1997,  
13  
14 45, 135-139.  
15  
16  
17 [31] Johnston, K. E., Tamura, T., *J. Agric. Food Chem.* 2004, 52, 6338-6340.  
18  
19 [32] Lucock, M. D., Green, M., Hartley, R., Levene, M. I., *Food Chem.* 1993, 47, 79-86.  
20  
21 [33] Lucock, M. D., Green, M., Priestnall, M., Daskalakis, I., Levene, M. I., Hartley, R.,  
22  
23 *Food Chem.* 1995, 53, 329-338.  
24  
25  
26 [34] Ng, X., Lucock M., Veysey, M., *Food Chem.* 2008, 106, 200-210.  
27  
28  
29 [35] Lucock, M. D., Nayeemuddin, F. A., Habibzadeh, N., Schorah, C. J., Hartley, R.,  
30  
31 Levene, M. I., *Food Chem.* 1994, 50, 307-310.  
32  
33  
34 [36] Ormazabal, A., García-Cazorla, A., Pérez-Dueñas, B., Gonzalez, V., Fernández-  
35  
36 Álvarez, E., Pineda, M., Campistol, J., Artuch, R., *Clin. Chim. Acta* 2006, 371, 159-162.  
37  
38 [37] Shin, H.-C., Shimoda, M., Kokue, E., *J. Chrom. B* 1994, 661, 237-244.  
39  
40  
41 [38] Luo, W., Li, H., Zhang, Y., Ang, C. Y. W., *J. Chromatogr. B.* 2002, 766, 331-337.  
42  
43 [39] Matella, N. J., Braddock, R. J., Gregory, J. F., Goodrich, R. M., *J. Agric. Food Chem.*  
44  
45 2005, 53, 2268-2274.  
46  
47  
48 [40] Vahteristo, L., Lehtikoinene, K., Ollilainen, V., Varo, P., *Food Chemistry* 1997, 59,  
49  
50 589-597.  
51  
52 [41] Ruggeri, S., Vahteristo, L.T., Aguzzi, A., Finglas, P., Carnovale, E., *J. Chromatogr. A*  
53  
54 1999, 855, 237-245.  
55  
56  
57 [42] Horne, D. W., *Anal. Biochem.* 2001, 297, 154-159.  
58  
59  
60

- 1  
2  
3 [43] Fukuwatari, T., Fujita, M., Shibata, K., *Biosci. Biotechnol. Biochem.* 2009, 73, 322-  
4  
5 327.  
6  
7  
8 [44] Doshi, S. N, McDowell, I. F. W., Moat, S. J., Payne, N., Durrant, H. J., Lewis, M. J.,  
9  
10 Goodfellow, J., *Circulation* 2002, 105, 22-26.  
11  
12 [45] Patring, J. D. M., Jasterbova, J. A., *J. Chrom. A* 2007, 1143, 72-82.  
13  
14 [46] Zhang, G.-F., Storozhenko, S., van der Straeten, D., Lambert, W. E., *J. Chromatogr. A*  
15  
16 2005, 1078, 59-66.  
17  
18 [47] Shibukawa, A., Lloyd, D. K., Wainer, I. W., *Chromatographia* 1993, 35, 419-429.  
19  
20 [48] Good, N. E., G. D. Winget, G. D., Winter, W., T. N. Connolly, T. N., Izawa, S.,  
21  
22 Singh R. M. M., *Biochemistry* 1966, 5, 467-477.  
23  
24 [49] Reijenga, J. C., Aben, G. V. A., Verheggen, Th. P. E. M. and Everaerts, F. M., *J.*  
25  
26 *Chromatogr.* 1983, 260, 241-254.  
27  
28  
29 [50] Křivánková, L., Foret, F., Boček, P., *J. Chromatogr.* 1991, 545, 307-313.  
30  
31  
32 [51] Pantůčková, P., Křivánková, L., *Electrophoresis* 2004, 25, 1102-1111.  
33  
34 [52] Beckers, J. L., Everaerts, F. M., *J. Chromatogr. A* 1972, 68, 207-230.  
35  
36  
37 [53] Gebauer, P., Boček, P., *J. Chromatogr.* 1983, 267, 49-65.  
38  
39  
40 [54] Boček, P., in: Jorgensen, C. K., Paquette, L. A., de Meijere, A., Cram, D. J. (Eds),  
41  
42 *Analytical Isotachophoresis*, Springer Berlin / Heidelberg 1981, pp. 131-177  
43  
44  
45 [55] Szakács, Z., Noszál, B., *Electrophoresis* 2006, 27, 3399-3409.  
46  
47  
48 [56] Liu, R. M., Margerum, D. W., *Inorg. Chem.* 1998, 37, 2531-2537.  
49  
50  
51 [57] Křivánková, L., Vraná, A., Gebauer, P., Boček, P., *J. Chromatogr. A* 1997, 772, 283-  
52  
53 295.  
54  
55 [58] Kaniansky, D., Marák, V., Madajová, V., Šimuničová, E., *J. Chromatogr.* 1993, 638,  
56  
57 137-146.  
58  
59 [59] Kaniansky, D., Iványi, F., Onuska, F. I., *Anal. Chem.* 1994, 66, 1817-1824.  
60

- 1  
2  
3 [60] Kaniansky, D., Zelenský, I., Hybenová, A., Onuska, F. I., *Anal. Chem.* 1994, 66,  
4 4258-4264.  
5  
6  
7  
8 [61] Procházková, A., Křivánková, L., Boček, P., *Electrophoresis* 1998, 19, 300-304.  
9  
10 [62] Procházková, A., Křivánková, L., Boček, P., *J. Chromatogr. A* 1999, 838, 213-221.  
11  
12 [63] Hamoudová, R., Urbánek, M., Pospíšilová, M., Polášek, M., *J. Chromatogr. A* 2004,  
13 1032, 281-287.  
14  
15  
16 [64] Urbánek, M., Blechtová, L., Pospíšilová, M., Polášek, M., *J. Chromatogr. A* 2002,  
17 958, 261-271.  
18  
19  
20 [65] Urbánek, M., Pospíšilová, M., Polášek, M., *Electrophoresis* 2002, 23, 1045-1052.  
21  
22  
23 [66] Křivánková, L., Gebauer, P., Boček, P., *J. Chromatogr. A* 1995, 716, 35-48.  
24  
25  
26 [67] Pantůčková, P., Urbánek, M., Křivánková, L., *Electrophoresis* 2007, 28, 3777-3785.  
27  
28  
29 [68] Pantůčková, P., Gebauer, P., Boček, P., Křivánková, L., *Electrophoresis* 2009, 30,  
30 203-214.  
31  
32  
33 [69] Hruška, V., Jaroš, M., Gaš, B., *Electrophoresis* 2006, 27, 984-991.  
34  
35  
36 [70] Patring, J. D. M., Lanina, S. A., Jasterbova, J. A., *J. Sep. Sci.* 2006, 29, 889-904.  
37  
38  
39 [71] Gilbert, E. C., *J. Am. Chem. Soc.* 1931, 53, 3956-3962.  
40  
41  
42  
43  
44  
45  
46  
47  
48  
49  
50  
51  
52  
53  
54  
55  
56  
57  
58  
59  
60



## Legends to the figures

### Figure 1

Zone existence diagrams for LEs composed of (A)  $1 \times 10^{-2}$  M acetate + ammonium, pH = 4.5; (B)  $1 \times 10^{-2}$  M acetate + ammonium, pH = 7.0; (C)  $1 \times 10^{-2}$  M chloride + creatinine, pH = 5.0, with terminating  $\text{OH}^-$  ions. Effective mobilities  $\bar{u}$  ( $10^{-9} \text{ m}^2\text{V}^{-1}\text{sec}^{-1}$ ); The curves 0-12 correspond to set  $\text{p}K_{\text{HX}}$  and variable  $u_{\text{X}}$ ; the curves 10-80 correspond to set ionic mobilities  $u_{\text{X}}$  and variable  $\text{p}K_{\text{HX}}$ . MIX = area of mixed zones with hydrocarbonate. For further explanation, see text.

### Figure 2

CZE step record of CITP-CZE analysis of 5-MTHF in human blood. Sample: (a) human blood of a healthy volunteer prior to consumption of FA was diluted 1:5 with deionized water with the final concentration of hydrazine and EDTA of  $5 \times 10^{-3}$  M and  $1 \times 10^{-2}$  M, resp.; (b) human blood of a volunteer treated with FA (0.8 mg/day) was diluted as in (a). An estimated 5-MTHF concentration was  $2.4 \times 10^{-6}$  M; (c) as in (b) spiked with  $5 \times 10^{-6}$  M 5-MTHF; (d) as in (b) spiked with  $1 \times 10^{-5}$  M 5-MTHF. LE:  $1 \times 10^{-2}$  M HCl + creatinine + 0.005% HPC, pH 5.0; TE:  $1 \times 10^{-2}$  M MES; BGE:  $1 \times 10^{-2}$  M acetate + ammonium + 0.005% HPC, pH 4.5. Injected sample volume 10  $\mu\text{L}$ . Driving current during CITP step, zone transfer, and CZE step was 100, 40, and 60  $\mu\text{A}$ , respectively. Detection at 220 nm. R, detector response. For other experimental conditions, see Section 2.

### Figure 3

1  
2  
3 CITP-CZE analysis of 5-MTHF in human serum. (A) CITP step record; (B) CZE step record.

4  
5 Sample: (a) human serum of a healthy volunteer prior to consumption of FA was diluted 1:5  
6  
7 with deionized water with the final concentration of  $5 \times 10^{-3}$  M hydrazine; (b) human serum  
8  
9 of volunteer treated with FA (0.8 mg/day) was diluted as in (a). An estimated 5-MTHF  
10  
11 concentration was  $1.2 \times 10^{-6}$  M; (c) as in (b) spiked with  $2.5 \times 10^{-6}$  M 5-MTHF; (d) as in (b)  
12  
13 spiked with  $1 \times 10^{-5}$  M 5-MTHF. LE:  $1 \times 10^{-2}$  M HCl + creatinine + 0.005% HPC, pH 5.0;  
14  
15  
16 TE:  $1 \times 10^{-2}$  M MES; BGE:  $1 \times 10^{-2}$  M acetate + ammonium + 0.005% HPC, pH 4.5. Injected  
17  
18 sample volume 10  $\mu$ L. Driving current during CITP step, zone transfer, and CZE step was  
19  
20  
21 100, 40, and 60  $\mu$ A, respectively. Detection at 220 nm. R, detector response. For other  
22  
23  
24 experimental conditions, see Section 2.  
25  
26  
27  
28  
29  
30  
31

#### 32 **Figure 4**

33  
34 CZE step record of CITP-CZE analysis of 5-MTHF in human urine. Sample: (a) human urine  
35  
36 of a volunteer treated with FA (0.8 mg/day) was diluted 1:5 with deionized water with the  
37  
38 final concentration of  $5 \times 10^{-3}$  M hydrazine; (b) as in (a) spiked with  $1 \times 10^{-5}$  M 5-MTHF. LE:  
39  
40  
41  $1 \times 10^{-2}$  M HCl + creatinine + 0.005% HPC, pH 5.0; TE:  $1 \times 10^{-2}$  M MES; BGE:  $1 \times 10^{-2}$  M  
42  
43 acetate + ammonium + 0.005% HPC, pH 4.5. Injected sample volume 10  $\mu$ L. Driving current  
44  
45 during CITP step, zone transfer, and CZE step was 100, 40, and 60  $\mu$ A, respectively.  
46  
47  
48  
49 Detection at 220 nm. R, detector response. For other experimental conditions, see Section 2.  
50  
51  
52  
53  
54  
55  
56  
57  
58  
59  
60

1  
2  
3  
4  
5  
6  
7  
8  
9  
10  
11  
12  
13  
14  
15  
16  
17  
18  
19  
20  
21  
22  
23  
24  
25  
26  
27  
28  
29  
30  
31  
32  
33  
34  
35  
36  
37  
38  
39  
40  
41  
42  
43  
44  
45  
46  
47  
48  
49  
50  
51  
52  
53  
54  
55  
56  
57  
58  
59  
60**Table 1.** Tested electrolyte systems for CITP

No.	LE	TE
1	$1 \times 10^{-2}$ M chloride + ammonium + 0.005 % HPC, pH 5.0-6.5	$1 \times 10^{-2}$ M HEPES +Ba(OH) <sub>2</sub> , pH 5.0-7.5
2	$1 \times 10^{-2}$ M formate + $\beta$ -alanine + 0.005% HPC, pH 3.6-4.0	$1 \times 10^{-2}$ M acetate + $\beta$ -alanine, pH 4.1
3	$1 \times 10^{-2}$ M chloride + histidine + 0.005 % HPC, pH 5.5-6.5	$1 \times 10^{-2}$ M Good`s buffers, See 2.1.
4	$1 \times 10^{-2}$ M chloride + EACA + 0.005 % HPC, pH 4.0-4.8	$1 \times 10^{-2}$ M MES
5	$1 \times 10^{-2}$ M chloride + creatinine + 0.005 % HPC, pH 5.0-5.5	$1 \times 10^{-2}$ M MES

For Peer Review

**Table 2.** Ionic mobility and p*K* values [69] (if not stated otherwise) of selected components

Analyte	p <i>K</i>	Ionic mobility (10 <sup>-9</sup> m <sup>2</sup> V <sup>-1</sup> s <sup>-1</sup> )
Acetate	4.8	-42.4
β-alanine	2.3	34.0
Lactate	3.9	-36.5
Phosphate	2.2, 7.2, 12.7	-71.5, -61.4, -34.6
Carbonate	6.4, 10.3	-46.1, -71.8,
Urate	5.7 <sup>a</sup>	-27.9 <sup>a</sup>
HEPES	7.5	-23.5
Chloride	-2.0	-79.1
FA	2.4, 3.5, 5.0, 8.1 <sup>b</sup>	-34.3, -25.8, -14.1, 11.5 <sup>b</sup>
MFA	2.3, 3.4, 4.9, 7.9 <sup>b</sup>	-34.0, -25.5, -14.7, 12.2 <sup>b</sup>
Histidine	2.0, 6.0	44.7, 28.8
Ascorbate	10.5, 4.3	-51.0, -25.5
Ammonium	9.3	76.2
Hydrazine	8.1 <sup>c</sup>	59.1 <sup>d</sup>
MES	6.1	-28.0
EACA	4.4	28.8
Creatinine	4.8	37.2
Formate	3.8	-56.6

<sup>a</sup> from [5], <sup>b</sup> from [68], <sup>c</sup> from [51], <sup>d</sup> from [71].

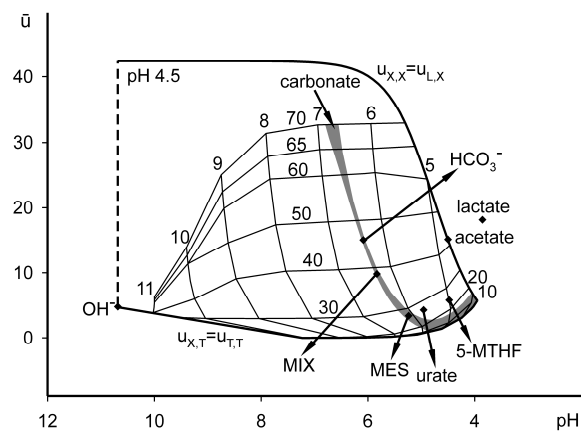
**Table 3.** Parameters of quantitation

Sample	Equation of calibration curve for peak area	LOD (M)	RSD (%) for peak area	
			Intra-day	Inter-day
5-MTHF in water	$y(\text{V.s}) = 20820 x(\text{M}) - 27, R^2 = 0.999$	$9.9 \times 10^{-8}$	4.9 (n = 3)	3.5 (n = 2)
Human blood	$y(\text{V.s}) = 16164 x(\text{M}) - 10, R^2 = 0.994$	$1.6 \times 10^{-7}$	4.7 (n = 2)	10.3 (n = 2)
Human serum	$y(\text{V.s}) = 5719 x(\text{M}) + 21, R^2 = 0.990$	$1.1 \times 10^{-7}$	4.5 (n = 2)	8.1 (n = 2)
Human urine	$y(\text{V.s}) = 14021 x(\text{M}) - 186, R^2 = 0.976$	$4.7 \times 10^{-6}$	9.8 (n = 2)	11.4 (n = 2)

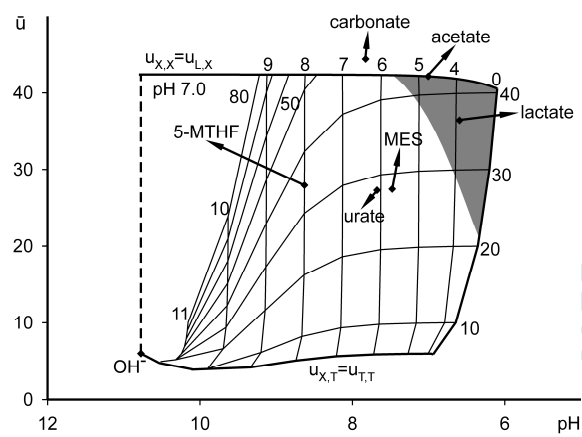
For Peer Review

Figure 1

(A)



(B)



(C)

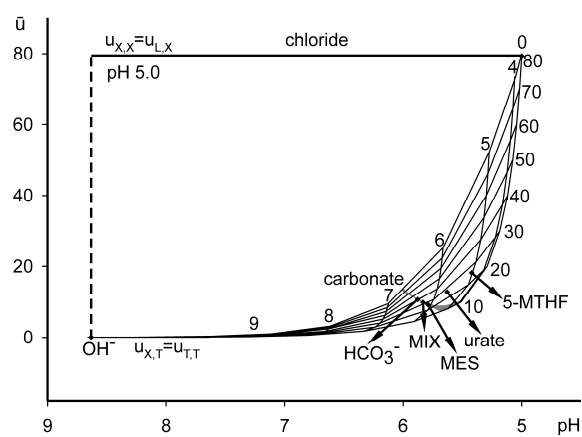


Figure 2

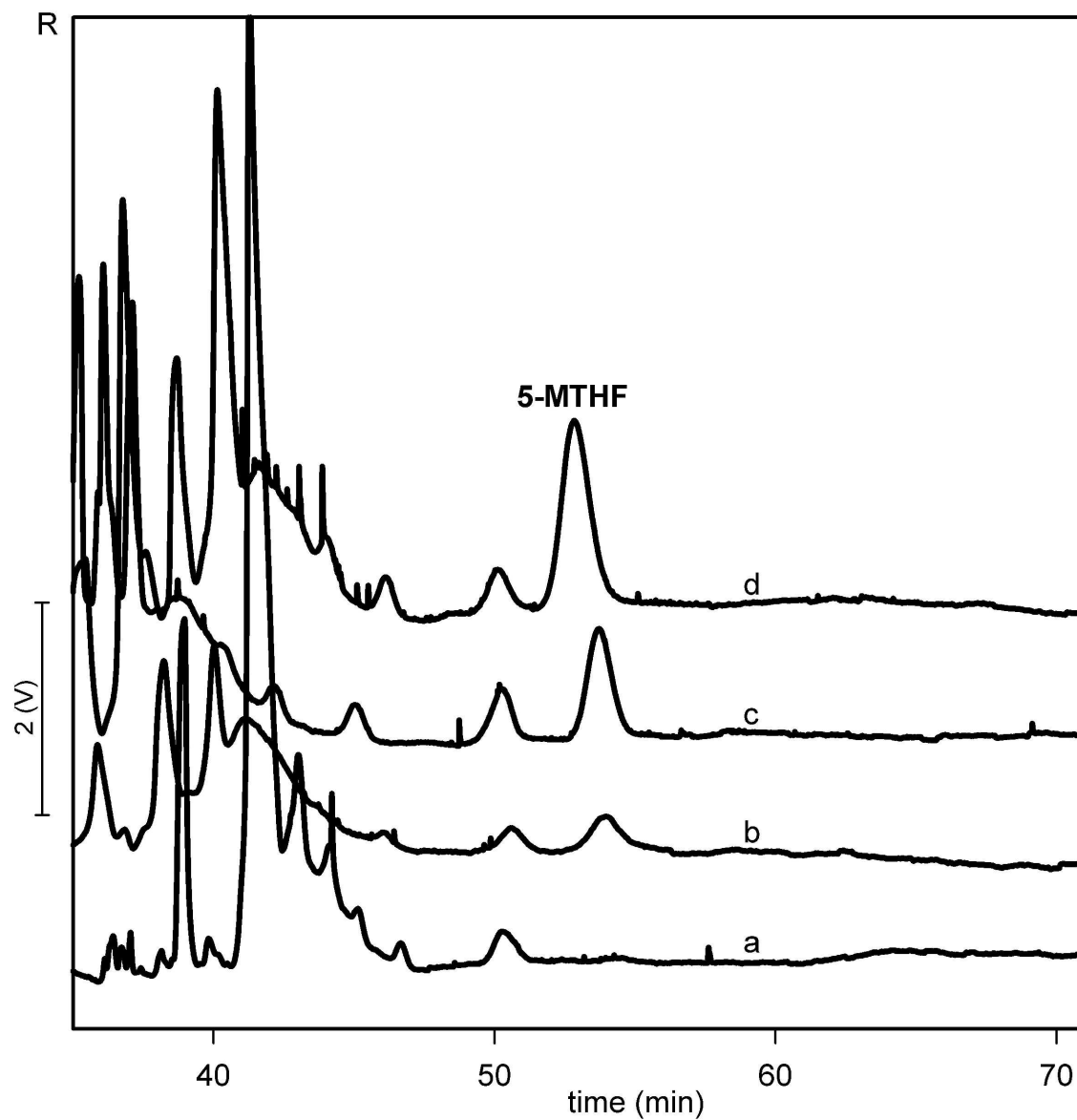


Figure 3

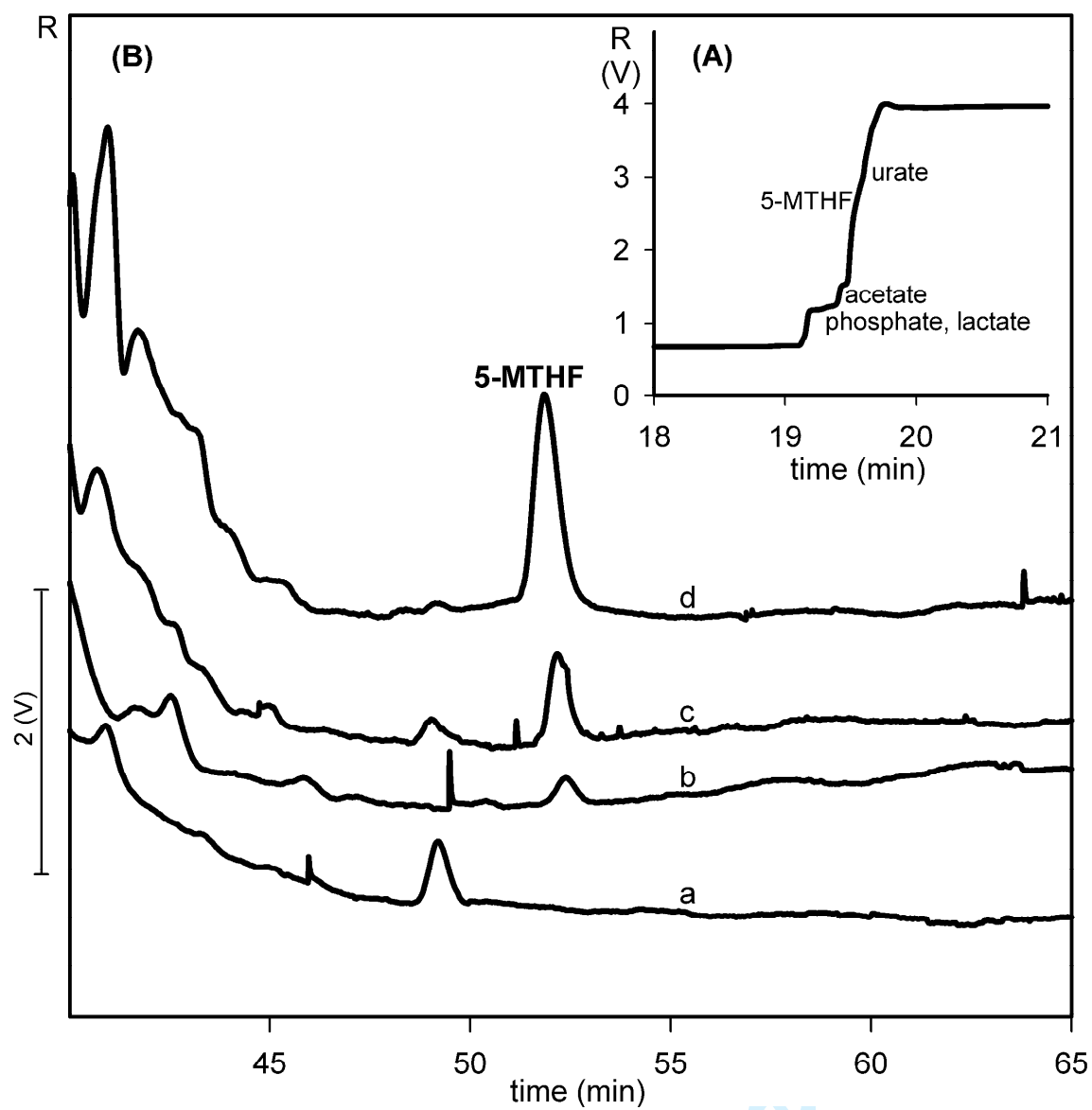




Figure 4

