



**HAL**  
open science

## CHIRAL CAPILLARY ELECTROPHORESIS IN FOOD ANALYSIS

Miguel Herrero, Caroline Simo, Virginia Garcia-Cañas, Salvatore Fanali,  
Alejandro Cifuentes

► **To cite this version:**

Miguel Herrero, Caroline Simo, Virginia Garcia-Cañas, Salvatore Fanali, Alejandro Cifuentes. CHIRAL CAPILLARY ELECTROPHORESIS IN FOOD ANALYSIS. *Electrophoresis*, 2010, 31 (13), pp.2106. 10.1002/elps.200900770 . hal-00599460

**HAL Id: hal-00599460**

**<https://hal.science/hal-00599460>**

Submitted on 10 Jun 2011

**HAL** is a multi-disciplinary open access archive for the deposit and dissemination of scientific research documents, whether they are published or not. The documents may come from teaching and research institutions in France or abroad, or from public or private research centers.

L'archive ouverte pluridisciplinaire **HAL**, est destinée au dépôt et à la diffusion de documents scientifiques de niveau recherche, publiés ou non, émanant des établissements d'enseignement et de recherche français ou étrangers, des laboratoires publics ou privés.



## CHIRAL CAPILLARY ELECTROPHORESIS IN FOOD ANALYSIS

Journal:	<i>Electrophoresis</i>
Manuscript ID:	elps.200900770.R1
Wiley - Manuscript type:	Review
Date Submitted by the Author:	25-Jan-2010
Complete List of Authors:	Herrero, Miguel; Institute of Industrial Fermentations, Food Analysis Simo, Caroline; Institute of Industrial Fermentation, Food Anaysis Garcia-Cañas, Virginia; Instituto de Fermentaciones Industriales, Caracterización de Alimentos Fanali, Salvatore; Consiglio Nazionale delle Ricerche, Institute of Chemical Methodologies Cifuentes, Alejandro; CSIC, Food Analysis
Keywords:	amino acids, beverages, enantiomers, pesticides, polyphenols



## CHIRAL CAPILLARY ELECTROPHORESIS IN FOOD ANALYSIS

Miguel Herrero<sup>1,2</sup>, Carolina Simó<sup>1</sup>, Virginia García-Cañas<sup>1</sup>, Salvatore Fanali<sup>3</sup>, Alejandro Cifuentes<sup>1\*</sup>

<sup>1</sup>*Department of Food Analysis, Institute of Industrial Fermentations (CSIC)*

*Juan de la Cierva 3, 28006 Madrid, Spain*

<sup>2</sup>*Food Science Departmental Section, Autónoma de Madrid University, Campus de Cantoblanco, 28049 Madrid, Spain*

<sup>3</sup>*Institute of Chemical Methodologies, Consiglio Nazionale delle Ricerche Area della Ricerca di Roma I, Via Salaria Km 29,300, 00015 Monterotondo, Rome, Italy*

**Running Title:** Chiral CE in food

**\*Corresponding author:**

Tel# 34-91-5622900 (Ext 387), Fax# 34-91-5644853, E-mail: acifuentes@ifi.csic.es

**Abbreviations:**  $\beta$ -CD ( $\beta$ -cyclodextrin);  $\gamma$ -CD ( $\gamma$ -cyclodextrin); DM- $\beta$ -CD (2,6-di-*O*-methyl- $\beta$ -cyclodextrin); DNS (5-(dimethylamino)naphthalene-1-sulfonyl chloride); FITC (fluorescein isothiocyanate); GABA (gamma-amino butyric acid); HPF (hydrolysed protein fertilizers); HP- $\beta$ -CD (2-hydroxypropyl- $\beta$ -cyclodextrin); SBE- $\beta$ -CD (sulfobutyl  $\beta$ -cyclodextrin).

**Keywords:** amino acids, beverages, capillary electrophoresis, chiral, enantiomers, pesticides, polyphenols.

**ABSTRACT**

This review article addresses the different chiral capillary electrophoretic methods used to study and characterize foods and beverages through the enantiomeric separation of different food compounds such as amino acids, pesticides, polyphenols, etc. This work intends to provide an updated overview on the main applications of such enantioselective procedures together with their main advantages and drawbacks in food analysis. Some foreseeable applications and developments of these chiral CZE, CEC and MEKC methods for food characterization are also discussed. Papers that were published within the period January 2003-October 2009 are included, following the previous review on this topic by Simo et al. (*Electrophoresis* 2003, 24, 2431–2441).

1  
2  
3 **CONTENTS**  
4

5  
6  
7 1. INTRODUCTION  
8

9 2. SCOPE OF THE REVIEW  
10

11 3. AMINO ACIDS  
12

13 **4. FUNGICIDES, HERBICIDES AND OTHER PESTICIDES**  
14

15  
16 5. PHENOLIC COMPOUNDS  
17

18 6. FUTURE OUTLOOKS AND CONCLUDING REMARKS  
19

20 7. REFERENCES  
21  
22  
23  
24  
25  
26  
27  
28  
29  
30  
31  
32  
33  
34  
35  
36  
37  
38  
39  
40  
41  
42  
43  
44  
45  
46  
47  
48  
49  
50  
51  
52  
53  
54  
55  
56  
57  
58  
59  
60

For Peer Review

## 1. INTRODUCTION

Nowadays, there is a clear trend towards the use of enantioselective methodologies in Food Analysis [1]. Chiral separations can be used in food and beverage studies for identifying adulterated foods and beverages, control and monitoring of fermentation processes and products, evaluation and identification of age, treatment and storage effects, evaluation of some flavor and fragrance components, fingerprinting complex mixtures, analysis of chiral metabolites from chiral and/or prochiral constituents of foods and beverages, decreasing environmental persistence of contaminants, etc [2].

Among the different separation techniques developed so far to separate chiral compounds (e.g., HPLC, GC, etc), capillary electrophoresis (CE) has emerged as a good alternative for enantiomer separations since this technique provides fast and efficient separations for this type of analysis. Moreover, the availability of many chiral selectors and the minimum consumption of such compounds during a CE run have to be considered as an additional advantage of capillary electromigration methods. These characteristics fulfill many of the requirements demanded by food chemists, regulatory agencies and quality control laboratories involved in Food Analysis [1]. Moreover, chiral CE methods are capable to provide important information about processing, quality control, compliance with food and trade laws, adulteration, contamination, product tampering and chemical composition of foods. As a consequence, there is a growing interest in the development of CE methods, including chiral procedures, applied to food analysis as can be deduced from the review works shown in Table 1 published on these topics [1,3-17].

## 2. SCOPE OF THE REVIEW

This review article covers the different chiral capillary electrophoretic methods (i.e., CZE, CEC and MEKC) used to study and characterize foods and food compounds including, amino acids, pesticides, polyphenols, etc. Thus, especial emphasis is given to applications in which analytes are detected in food matrices, demonstrating in this way the usefulness of chiral CE separations to solve specific problems in Food Science and Technology (see some representative examples in Table 2). Papers that were published during the period January 2003-October 2009 are included following the previous review on this topic by Simo et al [1]. Some foreseeable applications and developments of chiral CZE, CEC and MEKC methods in food analysis are also discussed.

## 3. AMINO ACIDS

The analysis of chiral amino acids in foods and beverages is a very useful tool to assess their quality, corroborate their authenticity or detect microbiological contaminations. Moreover, determination of specific enantiomers or enantiomer ratios of amino acids can provide valuable information about adulterations, fermentation, storage, age, etc. The huge information that can be achieved through the chiral CE analysis of amino acids together with the well known structure of amino acids and their ubiquitous character, have made of this application the most frequent as can be deduced from the high number of papers published on this topic.

The enantioseparation by CE-MS of seven chiral amino acids and one achiral amino acid was carried out to detect adulterations in orange juices [30]. A polymer coating of the inner

1  
2  
3 capillary wall was used in this case to reduce the EOF and minimize in this way the entrance  
4  
5 of the neutral  $\beta$ -CD into the ion source [30]. The chiral CE-MS method provided good  
6  
7 selectivity and the possibility to confirm the analyte identity through the molecular mass  
8  
9 determination. However, this chiral CE-MS method provided lower sensitivity than the  
10  
11 obtained using a chiral-MEKC-LIF method [31]. This chiral-MEKC-LIF method was  
12  
13 developed to classify three types of commercial orange juices (i.e., nectars, orange juices  
14  
15 reconstituted from concentrates, and pasteurized orange juices not from concentrates) based  
16  
17 on their amino acids profile. From these results, it was demonstrated that some D-amino acids  
18  
19 occur naturally in orange juices. Application of stepwise discriminant analysis to 26 standard  
20  
21 samples of orange juice showed that the amino acids L-Arg, L-Asp and GABA were the most  
22  
23 important variables to differentiate the three groups of orange juices. With these three selected  
24  
25 amino acids a 100% correct classification of the samples was obtained either by standard or  
26  
27 by leave-one-out cross-validation procedures. These classification functions based on the  
28  
29 content in L-Arg, L-Asp and GABA were also applied to nine test samples and provided an  
30  
31 adequate classification and/or interesting information on the samples [31].  
32  
33  
34  
35  
36  
37  
38  
39  
40

41 Ornithine is a chiral non-protein amino acid, whose L-enantiomer favors the metabolism of  
42  
43 corporal fatty excess, collaborates in human growth hormone synthesis, participates in  
44  
45 ammonia detoxification in urea cycle and generates polyamines and L-proline, which are  
46  
47 involved in cell proliferation and collagen synthesis, respectively [32]. However, D-Orn  
48  
49 produces depletion in the urea synthesis by competition with L-Orn in the enzymatic system,  
50  
51 giving rise to toxic consequences for the body by avoiding the elimination of ammonia [32].  
52  
53 Therefore, the chiral separation of ornithine is an interesting topic in food analysis, because  
54  
55 this compound is frequently found in fermented beverages and food supplements. In a recent  
56  
57 paper [32], ornithine was determined by CE-MS in beers submitted to different fermentation  
58  
59  
60



1  
2  
3 processes. By operating the instrument in tandem mode (MS/MS), a significant increase in the  
4  
5 signal was achieved, obtaining LOD of  $2.5 \cdot 10^{-9}$  M, two orders of magnitude lower than the  
6  
7 LOD obtained with UV detection [33,34].  
8  
9

10  
11  
12 Dietary supplements are more and more consumed everyday and their adequate quality  
13  
14 control is mandatory in order to warrant their safety and composition. Thus, CE coupled with  
15  
16 fiber-optic light-emitting diode-induced fluorescence detection was developed for the chiral  
17  
18 separation of tyrosine using R(-)-4-(3-isothiocyanatopyrrolidin-1-yl)-7-(N,N-  
19  
20 dimethylaminosulfonyl)-2,1,3-benzoxadiazole as a chiral fluorescence tagged reagent for  
21  
22 derivatization of Tyr [22]. The LOD of D- and L-Tyr derivatives were 2.9 and 2.2  $\mu\text{mol/L}$   
23  
24 (S/N = 3), respectively. The method was successfully applied to the determination of Tyr in a  
25  
26 commercial amino acid oral solution.  
27  
28  
29  
30  
31

32  
33  
34 A fast in-capillary derivatization method by CE with 6-aminoquinolyl-N-  
35  
36 hydroxysuccinimidyl carbamate was developed for the determination of amino acid  
37  
38 enantiomers (arginine, lysine, and ornithine) providing LOD in the micro-molar range using  
39  
40 UV detection at 260 nm and a BGE with a mixture of cyclodextrins. The optimized method  
41  
42 was successfully applied to the determination of the enantiomers of arginine, lysine, and  
43  
44 ornithine in dietary supplements and wines [35].  
45  
46  
47  
48  
49

50  
51 Confirmation of substantial equivalence between transgenic foods and their isogenic non-  
52  
53 transgenic counterparts is essential in order to corroborate the safety of these new foods. In  
54  
55 this regard, chiral-CE analysis can provide complementary information and a completely new  
56  
57 perspective on this hot topic. Following this idea, a new chiral method using MEKC-LIF  
58  
59 analysis was developed to identify and quantify L- and D-amino acids in three lines of  
60

1  
2  
3 transgenic maize and their corresponding nontransgenic parental lines grown under identical  
4 conditions [18]. The procedure included amino acids extraction, derivatization with FITC and  
5  
6  
7  
8  
9  
10  
11  
12  
13  
14  
15  
16  
17  
18  
19  
20  
21  
22  
23  
24  
25  
26  
27  
28  
29  
30  
31  
32  
33  
34  
35  
36  
37  
38  
39  
40  
41  
42  
43  
44  
45  
46  
47  
48  
49  
50  
51  
52  
53  
54  
55  
56  
57  
58  
59  
60

transgenic maize and their corresponding nontransgenic parental lines grown under identical conditions [18]. The procedure included amino acids extraction, derivatization with FITC and chiral-MEKC-LIF separation in a background electrolyte composed of 100 mM sodium tetraborate, 80 mM SDS, and 20 mM  $\beta$ -CD at pH 10.0. The analysis was completed in less than 25 min, with efficiencies up to 890 000 plates/m and LODs as low as 160 nM, allowing the detection of 1% D-Arg in the presence of 99% of its opposite enantiomer. Very similar D- and L-amino acids composition was obtained for one of the studied maize couples (natural vs transgenic) what could be presented as a new proof of their substantial equivalence. **However, significant differences in their L/D ratios of amino acids were observed for the other two couples of maize studied.** It is concluded that enantioselective procedures can open new perspectives in the study of transgenic organisms in order to corroborate (or not) the equivalence with their conventional counterparts, as also demonstrated through the chiral analysis of amino acids from conventional and transgenic yeasts used for sparkling wine production [36]. From this study it was concluded that the genetic modification brings a faster autolysis of the yeast, releasing a higher amount of L-amino acids to the medium in a short time. Interestingly, the pattern of release of D-amino acids was also different between the transgenic and the conventional yeast strains [36].

The use of modified cyclodextrins was investigated for the separation of five chiral amino acids in different food matrices by CE-MS, including transgenic soybeans [21]. The new synthesized 3-monodeoxy-3-monoamino- $\beta$ -cyclodextrin could bring additional ionic interactions due to its positive charge, increasing in this way the selector-analyte complex formation, and allowing in this way the use of low concentration of chiral selectors for their use in the CZE-MS coupling [21]. Moreover, LOD values obtained by chiral CE-MS were in the nM range comparable or only slightly worse to those obtained by CE-LIF [21]. An

1  
2  
3 example of these applications is shown in Figure 1 in which some qualitative and quantitative  
4  
5 differences between the wild and transgenic soybeans studied were found based on their D-  
6  
7 and L-amino acids profile.  
8  
9

10  
11  
12 Chiral analysis of amino acids has also been used to identify different varieties of microalgae  
13  
14 used as natural source of nutraceuticals and functional ingredients together with their different  
15  
16 drying processes [37]. Thus, three microalgae species, *Spirulina platensis*, *Dunaliella salina*,  
17  
18 and *Tetraselmis suecica* were compared in terms of their content in D- and L- amino acids  
19  
20 analyzed by using MEKC-LIF with  $\beta$ -cyclodextrin in the BGE to separate and quantify the  
21  
22 analytes previously derivatized with FITC. The method allowed the detection of amounts as  
23  
24 low as 330 ng of D-Arg per gram of microalga. Several D-amino acids were detected in all  
25  
26 the microalgae, observing interesting differences in their D/L-amino acids profiles,  
27  
28 corroborating the usefulness of the chiral-MEKC-LIF approach to characterize different  
29  
30 microalgae species as well as different microalgae drying processes [37].  
31  
32  
33  
34  
35

36  
37  
38 The formation of D-amino acids in many fermented foods depends, among other factors, on  
39  
40 the particular fermentation conditions, the action and autolysis of the microorganisms  
41  
42 involved. In this sense, the analysis of chiral amino acids is an interesting analytical strategy  
43  
44 for food scientists, since these compounds can be used as bacterial markers and can help, e.g.,  
45  
46 to detect adulterations, microbiological contaminations, etc. Following this idea, different  
47  
48 chiral-CE methodologies have been developed to study different vinegars. Thus, the use of  $\beta$ -  
49  
50 cyclodextrin together with MEKC-LIF allowed the separation of D- and L- amino acids  
51  
52 previously derivatized using FITC in different vinegars with LOD lower than 17 nM [19].  
53  
54  
55 Several D-amino acids were detected and quantified in balsamic, sherry, white wine, and  
56  
57 cider vinegars using this MEKC-LIF procedure, observing interesting differences in their L-  
58  
59 and D-amino acids profiles and contents allowing a straightforward characterization of the  
60

1  
2  
3 different vinegars [19]. Recently, a chiral ligand-exchange capillary electrophoretic method  
4 has been developed for the enantioseparation and UV detection of dansyl-amino acids with  
5 Zn(II) L-arginine complex as chiral selecting system [38]. This new method was applied to  
6 the separation and quantification of some pairs of amino acids in rice vinegars showing a  
7 linear range between 0.8 and 150  $\mu\text{g/mL}$  [38] as well as for the analysis of aromatic amino  
8 acid enantiomers in rice-brewed suspensions (called Laozao in Chinese), what could be used  
9 as an index to recognize the brand of Laozao [20]. An example of this application can be seen  
10 in Figure 2. Also, the use of modified cyclodextrins together with CE-MS has shown very  
11 interesting possibilities for the separation and identification of chiral amino acids in vinegars  
12 [38].  
13  
14  
15  
16  
17  
18  
19  
20  
21  
22  
23  
24  
25  
26  
27  
28

29 Somehow related to the food analysis area, the degree of racemization of hydrolyzed protein  
30 fertilizers (HPFs) was monitored by MEKC using a polyacrylamide coated capillary and a run  
31 buffer containing SDS and  $\beta$ -cyclodextrin in the BGE [39]. The quantitative separation of D-  
32 and L-Ala was carried out and the degree of racemization (RD) was calculated as  $\text{D-Ala}/[\text{D-}$   
33  $\text{Ala}+\text{L-Ala}]$ . The analysis of ten commercial HPFs showed that more than 60% of HPFs had  
34 an RD greater than or equal to 40%, while only one product showed a RD <5%. These results  
35 indicated that most of the HPFs on the market are obtained with strong hydrolytic processes  
36 and high contents of D-amino acids are probably less effective as plant nutrients or even  
37 potentially dangerous to plants [39].  
38  
39  
40  
41  
42  
43  
44  
45  
46  
47  
48  
49  
50

51 Carnitine is a non-protein amino acid available to humans both through in vivo biogenesis  
52 involving lysine and methionine, and from a variety of dietary sources. In infants, since they  
53 are unable to synthesize it due to an immature biosynthesis pathway, this non-protein amino  
54 acid is an essential nutrient to be supplemented into the baby food products. However, such  
55 baby food products should be controlled to avoid the use of racemic carnitine. In fact, while  
56  
57  
58  
59  
60

1  
2  
3 L-carnitine plays an important role in the metabolism of long chain fatty acids, D-carnitine  
4  
5 has been found to have a considerable toxic influence on biochemical processes due to  
6  
7 inhibition effects on the carnitine acetyltransferase, producing a depletion of the body's L-  
8  
9 carnitine stock [23]. For this reason, the development of analytical methodologies enabling  
10  
11 the determination of carnitine enantiomers is of great interest for the evaluation of the  
12  
13 nutritional quality of baby food products. In a recent paper, the determination of D and L  
14  
15 carnitine in different infant formulas has been described using chiral-CE-MS [23]. Succinyl- $\gamma$ -  
16  
17 cyclodextrin was used filling 50% of the capillary with this chiral selector in a 0.5 M  
18  
19 ammonium formate BGE at pH 2.5. In order to improve sensitivity and selectivity of the  
20  
21 CZE-MS method, MS/MS experiments with an ion trap analyzer were carried out. Thus, a  
22  
23 100-fold sensitivity enhancement with respect to UV detection was obtained, achieving LOD  
24  
25 of 100 ng/g for D-carnitine. The determination of L-carnitine and its enantiomeric purity in 14  
26  
27 infant formulas supplemented with carnitine was successfully achieved; sample preparation  
28  
29 only required ultrafiltration with centrifugal filter devices to retain the components with the  
30  
31 highest molecular weights [23].  
32  
33  
34  
35  
36  
37  
38  
39  
40

#### 41 **4. FUNGICIDES, HERBICIDES AND OTHER PESTICIDES**

42  
43  
44  
45  
46 Detection of contaminants in foods is a key topic to guarantee their safety. Moreover, chiral  
47  
48 analysis of these analytes by CE-based techniques allows monitoring the different toxicity,  
49  
50 activity and/or degradation rate of the enantiomers involved and with that their impact on  
51  
52 human health. Thus, chiral resolution of the fungicide imazalil was performed by CE using 2-  
53  
54 hydroxypropyl- $\beta$ -cyclodextrin as a chiral selector [34]. Eight orange samples were analyzed,  
55  
56 and imazalil was detected in seven samples. In four of these seven oranges, the level of (-)-  
57  
58 imazalil was the same as that of (+)-imazalil, but in the other three oranges, the level of (-)-  
59  
60

1  
2  
3 imazalil was found to be lower than that of (+)-imazalil, suggesting that (-)-imazalil was  
4 degraded more quickly than (+)-imazalil in oranges (see Figure 3) [24]. In a different work  
5  
6 from the same group, vinclozolin, a fungicide with some anti-androgenic activity, was  
7  
8  
9  
10 **enantiomerically analyzed** using MEKC together with  $\gamma$ -cyclodextrin [25]. The peak area ratio  
11  
12 of (+)- and (-)-vinclozolins determined in wine was found to be 2:3, concluding that  
13  
14 degradation rates were different between (+)- and (-)-vinclozolins. The anti-androgenic  
15  
16 activities of (+)- and (-)-vinclozolins on dihydrotestosterone-induced transcription were also  
17  
18 investigated. The anti-androgenic activity of (+)-vinclozolin tended to be stronger than that of  
19  
20 (-)-vinclozolin, suggesting the possibility that vinclozolin can act as an enantioselective anti-  
21  
22 androgen [25].  
23  
24  
25  
26  
27

28 Enantiomer separation of a series of herbicides (aryloxypropionic, aryloxyphenoxypropionic,  
29  
30 and aminopropionic acid) was carried out by CEC after binding to biotin and grafting upon  
31  
32 streptavidin-modified porous glass beads. The results suggest that the interactions of the  
33  
34 enantiomer during CEC are solely based on chromatographic mechanisms and that the  
35  
36 electrophoresis plays only a minor role in this separation; in addition, it was demonstrated that  
37  
38 the enantiomerization barrier of some herbicides can be determined using this chiral  
39  
40 stationary phase [40].  
41  
42  
43  
44  
45

46 The enantioselective transformation of pesticides will determine their persistence and impact  
47  
48 on human health, since their transformation will define the possibility of detecting them in  
49  
50 water, plants and/or foods. Following this idea, CE was applied to study the enantioselective  
51  
52 transformation of five chiral pesticides in aerobic soil slurries [41]. Namely, the enantiomers  
53  
54 of five chiral pesticides of environmental interest, metalaxyl, imazaquin, fonofos (dyfonate),  
55  
56 ruelene (cruformate), and dichlorprop, were separated using CE with cyclodextrin chiral  
57  
58 selectors. The work showed the influence of environmental changes on the transformation of  
59  
60

1  
2  
3 chiral pollutants in soils. Moreover, CE was shown to be a simple, efficient, and inexpensive  
4 way to follow the transformation of chiral pesticides in laboratory microcosms where  
5 concentrations can be made high enough (25–50 mg/L initial racemate concentration) for  
6 detection of residual parent enantiomers during most of the process [41]. In this sense, the  
7 enantiomers of four different organophosphorus pesticides (profenofos, prothiofos, sulprofos,  
8 and pyraclofos) were analyzed using different BGEs containing sodium cholate either with  
9 SDS or  $\gamma$ -cyclodextrin, proposing this methodology for analyzing these pesticides in soil  
10 samples [42].  
11  
12  
13  
14  
15  
16  
17  
18  
19  
20  
21  
22  
23  
24

## 25 5. PHENOLIC COMPOUNDS

26  
27  
28 Catechins (see chemical structures in Figure 4) can play an important role against cancer,  
29 cardiovascular diseases and other degenerative diseases [43]. Moreover, structure–activity  
30 relationships of these compounds have been investigated and the catechol functionality in the  
31 catechins has been considered to be responsible for the protective effects exerted by these  
32 compounds against a wide range of human diseases [44]. Therefore, the analysis of the  
33 content of catechins, including their different enantiomeric forms, in foods as well as in  
34 biological fluids is thus crucial for epidemiological and nutritional studies designed to  
35 examine the possible relationships between foods containing catechins and the incidence of  
36 cancer and cardiovascular diseases. Moreover, the enantiomeric profile of catechins can also  
37 be used for food characterization including food processing and storage as shown below.  
38  
39  
40  
41  
42  
43  
44  
45  
46  
47  
48  
49  
50  
51  
52  
53

54 Analysis of catechins in chocolate and *Theobroma cacao* was carried out by using MEKC at  
55 acidic pH and hydroxypropyl- $\beta$ -cyclodextrin [45,46]. The acidic conditions were observed to  
56 improve stability of catechins. Under these conditions, separation of methylxanthines  
57 (theobromine and caffeine), procyanidin dimers B1 and B2, and catechins (epicatechin and  
58  
59  
60

catechin) was obtained simultaneously to the enantioseparation of racemic catechin within 10 min. Moreover, the enantioselectivity of the method made possible to evaluate possible epimerisation at the C-2 position of epicatechin monomer (see Figure 4) potentially occurring during heat processing and storage of *T. cacao* beans. The method was applied to *T. cacao* beans from different countries; interestingly, the native enantiomer (+)-catechin was found in the beans whereas, for the first time it was reported that in chocolate, predominantly (-)-catechin is present, probably yielded by epimerisation of (-)-epicatechin occurred during the manufacture of chocolate [45,46]. Similar approach was applied to differentiate green tea samples [47]. Namely, the MEKC BGE at acidic pH with hydroxypropyl- $\beta$ -cyclodextrin was applied to study the thermal epimerisation of (-)-epicatechin and epigallocatechin, to non-epi-structured (-)-catechin and (-)-gallocatechin. The latter compounds, being non-native molecules, were for the first time regarded as useful phytomarkers of tea samples subjected to thermal treatment. The proposed method was applied to the analysis of more than twenty tea samples of different geographical origins (China, Japan, Ceylon) having undergone different storage conditions and manufacturing processes, showing that it was possible to distinguish tea samples on the basis of their different contents of native and non-native catechins [47].

There is also a great interest to analyze catechins in biological fluids after ingestion of foods (rich in this kind of compounds) in order to analyze the bioavailability and biological activity of these polyphenols. Thus, a chiral CE method using  $\beta$ -CD in the BGE together with a high-sensitivity UV cell was developed to analyze catechin isomers in human plasma subsequent to green tea ingestion [48]. The method was successfully applied to determine catechin and epicatechin isomers in human plasma after ingestion of green tea with detection limits of 4.1 and 1.5 ng/mL, respectively. The unchanged amounts of catechin and epicatechin in plasma were about 17.4 and 1.8% of the administered dose after 2 h of starting tea ingestion [48].

Chiral CE was also applied to the separation and quantification of catechin and epicatechin



1  
2  
3 (plus ascorbic acid) in some commercial drinks and in human urine after ingestion of the  
4 mentioned drinks. Analysis involved the separation of analytes in less than 5.0 min at 240 nm  
5 using a BGE composed of 50 mM borate buffer with 3 mM  $\beta$ -CD at pH 8.35. Detection limits  
6 for catechin, epicatechin and ascorbic acid were 0.028, 0.011 and 0.004  $\mu\text{g/mL}$ , respectively.  
7  
8 The maximum urinary excretion of catechin and epicatechin were noted at 2.0 and 4.0 h of the  
9 administrated dose. Unchanged catechin, epicatechin and ascorbic acid amounted to about  
10 1.500, 8.696 and 0.003% of the administered dose in the 48.0 h urine collection [49].  
11  
12  
13  
14  
15  
16  
17  
18  
19  
20  
21

22 Different CE-based methods have been developed for chiral analysis of catechins trying to  
23 use this information also for food characterization, including food processing. Thus, the  
24 content of catechin and epicatechin enantiomers was determined in different food plants  
25 (apple juice and guaraná seeds) using CE with (2-hydroxypropyl)- $\gamma$ -cyclodextrin as chiral  
26 selector [27]. (+)-Catechin and (-)-epicatechin could be verified as the most common flavan-  
27 3-ols in apple juice and guaraná seeds. However, in the case of guaraná, all four enantiomers,  
28 both (+)- and (-)-catechin and (+)- and (-)-epicatechin were identified as naturally occurring  
29 compounds. This finding was verified by further isolation and purification of the flavan-3-ols  
30 and subsequent LC-MS analysis. This method allows for the identification of the authenticity  
31 of guaraná through the analysis of the catechin and epicatechin enantiomers [27]. Also, a new  
32 cyclodextrin-modified MEKC method was applied to the enantioseparation of catechin and  
33 epicatechin using 6-O-alpha-D-glucosyl- $\beta$ -cyclodextrin. Under these conditions, the  
34 resolution of racemic catechin and epicatechin were 4.15 and 1.92, respectively. With this  
35 system, catechin and epicatechin enantiomers along with other four catechins ((-)-catechin  
36 gallate, (-)-epicatechin gallate, (-)-epigallocatechin, (-)-epigallocatechin gallate) and caffeine  
37 were detected in tea samples [26].  
38  
39  
40  
41  
42  
43  
44  
45  
46  
47  
48  
49  
50  
51  
52  
53  
54  
55  
56  
57  
58  
59  
60

1  
2  
3 Hop (*Humulus Lupulus L.*) is a source of phenolic compounds in beer making. In hop cones,  
4 the most abundant prenylated chalcone is xanthohumol, which accounts for 80-90% of the  
5 prenylated flavonoids in hop. During the brewing process of beer, xanthohumol is converted  
6 into the corresponding isomeric prenylflavanone isoxanthohumol [28]. A hydroxypropyl- $\gamma$ -  
7 cyclodextrin-modified MEKC method has been proposed for the chiral resolution of  
8 isoxanthohumol enantiomers in beer samples. Using this method, isoxanthohumol was  
9 detected in 12 beer samples and the total levels of (+)- and (-)-isoxanthohumol ranged from  
10 0.15 to 1.4 mg/L. However, the amount of xanthohumol was below the detection limit (0.017  
11 mg/L). Each level of (-)-isoxanthohumol was almost the same as that of (+)-isoxanthohumol,  
12 suggesting that isoxanthohumol was a racemic mixture in these beer samples. The  
13 racemization of isoxanthohumol in beer could be attributed to the production of a racemic  
14 mixture from xanthohumol during boiling and to the fact that isoxanthohumol enantiomers  
15 were easily interconverted [28]. The separation of 2R- and 2S-diastereomers of major  
16 flavanone-7-O-glycosides in five citrus was carried out by chiral-CE using BGEs containing  
17 mixtures of different cyclodextrins [29]. Under these conditions, hesperidin and narirutin  
18 were detected in sweet orange and mandarin; hesperidin and eriocitrin in lemon; naringin and  
19 narirutin in grapefruit; while naringin, neohesperidin and neoeriocitrin were detected in sour  
20 orange. Marmalade made from sour and sweet oranges was also analyzed by using the same  
21 CE method. In this matrix, characteristic flavanones of both orange varieties could be  
22 identified. The simultaneous chiral resolution of these flavanones in citrus could be achieved  
23 only by employing combined buffers with two CDs. Chiral HPLC was used as a reference  
24 method, in order to prove diastereomeric ratio ascertained by chiral CE corroborating the  
25 usefulness of this new methodology for food characterization [29].  
26  
27  
28  
29  
30  
31  
32  
33  
34  
35  
36  
37  
38  
39  
40  
41  
42  
43  
44  
45  
46  
47  
48  
49  
50  
51  
52  
53  
54  
55  
56  
57  
58  
59  
60

## 6. FUTURE OUTLOOKS AND CONCLUDING REMARKS

1  
2  
3  
4 Although chiral CE is becoming well established as a viable alternative to chromatography  
5  
6 techniques, CE still lacks the sensitivity and repeatability of HPLC (or GC). However, GC and  
7  
8 HPLC also have their own drawbacks (e.g., generally use expensive chiral-columns, the  
9  
10 procedures for sample preparation are frequently laborious and time consuming and separations  
11  
12 may be lengthy). Therefore, new chiral procedures able to overcome these limitations (as the  
13  
14 ones based on CE) are very useful. In this regard, the relative novelty of the use of chiral analysis  
15  
16 in foods can make of chiral-CE the technique of choice to carry out such analysis. The high  
17  
18 resolving power, rapid method development, easy sample preparation and low operation expense  
19  
20 (allowing the use of sophisticated and/or very expensive chiral selectors) are good indicators of  
21  
22 the great potential of CE in the chiral food analysis area.  
23  
24  
25  
26  
27  
28  
29

30 In the non-distant future, some new developments that are nowadays being worked out within  
31  
32 the CE domain will foreseeably be applied for chiral food analysis trying to improve in this  
33  
34 way the throughput limitations, sensitivity problems and/or lack of repeatability of CE. These  
35  
36 developments include chip-based enantioselective separations (see an example in Figure 5)  
37  
38 [50-52], the use of new stationary phases and/or background electrolytes for chiral CE and  
39  
40 CEC [53-58], new chiral selectors [59-61], multi-capillary arrays and methods that combine  
41  
42 in a single step on-line stacking and derivatization of enantiomers [64-65]. It is expected that  
43  
44 the development of these new approaches and their applications in food analysis will be an  
45  
46 important help to overcome some of the mentioned limitations of chiral-CE.  
47  
48  
49  
50  
51  
52  
53  
54

#### 55 **ACKNOWLEDGEMENTS**

56  
57 This work was supported by the projects: 2008IT0013 CSIC-CNR bilateral project,  
58  
59 AGL2008-05108-C03-01 (Ministerio de Ciencia e Innovación) and CSD2007-00063 FUN-C-  
60

1  
2  
3 FOOD (Programa CONSOLIDER, Ministerio de Educación y Ciencia). M.H. would like to  
4  
5 thank Spanish Science and Innovation Ministry (MICINN) for a “Juan de la Cierva” contract.  
6  
7

8 Authors declare no conflict of interest.  
9  
10  
11  
12  
13  
14  
15  
16  
17  
18  
19  
20  
21  
22  
23  
24  
25  
26  
27  
28  
29  
30  
31  
32  
33  
34  
35  
36  
37  
38  
39  
40  
41  
42  
43  
44  
45  
46  
47  
48  
49  
50  
51  
52  
53  
54  
55  
56  
57  
58  
59  
60

For Peer Review

## 7. REFERENCES

- [1] Simo C., Barbas, C., Cifuentes, A. *Electrophoresis* 2003, 24, 2431–2441.
- [2] Armstrong, D. W., Chang, C. D., Li, W. L., *J. Agric. Food Chem.* 1990, 38, 1674-1677.
- [3] Shamsi, S. A., Miller, B. E., *Electrophoresis* 2004, 25, 3927-3961.
- [4] Gubitz, G., Schmid, M. G. *Electrophoresis* 2007, 28, 114-126.
- [5] Scriba, G. K. E. *J. Sep. Sci.* 2008, 31, 1991-2011.
- [6] Juvancz, Z., Kendrovics, R. B., Ivanyi, R., Szente, L. *Electrophoresis* 2008, 29, 1701-1712.
- [7] Fanali, S. *Electrophoresis* 2009, 30, S203-S210.
- [8] Fanali, S. *Methods Mol. Biol.* 2004, 243, 265-273.
- [9] Hernández-Borges, J., Rodríguez-Delgado, M. A., García-Montelongo, F. J., Cifuentes, A. *Electrophoresis* 2005, 26, 3799-3813.
- [10] Chankvetadze, B., *Electrophoresis* 2009, 30, S211-S221.
- [11] Chankvetadze, B., *J. Chromatogr. A* 2007, 1168, 45-70.
- [12] Chankvetadze, B. *Methods Mol. Biol.* 2004, 243, 387-399.
- [13] Kodama, S., Saito, Y., Chinaka, S., Yamamoto, A., Hayakawa, K. *J. Health Sci.*, 2006, 52, 489-494.
- [14] Kahle, K. A., Foley, J. P. *Electrophoresis* 2007, 28, 2503-2526.
- [15] Cifuentes, A. *Electrophoresis* 2006, 27, 283-303.
- [16] Garcia-Cañas, V., Cifuentes, A. *Electrophoresis*, 2008, 29, 294-309.
- [17] Castañeda, G., Rodríguez-Flores, J., Rios, A. *J. Sep Sci.* 2005, 28, 915-924.
- [18] Herrero, M., Ibañez, E., Martín-Alvarez, P. J., Cifuentes, A. *Anal. Chem.* 2007, 79, 5071-5077.
- [19] Carlavilla, D., Moreno-Arribas, M. V., Fanali, S., Cifuentes, A. *Electrophoresis* 2006, 27, 2551-2557.

- 1  
2  
3 [20] Qi, L., Liu, M. R., Guo, Z. P., Xie, M. Y., Qiu, C. G., Chen, Y. *Electrophoresis* 2007, 28,  
4  
5 4150-4155.  
6  
7  
8 [21] Giuffrida, A., León, C., García-Cañas, V., Cucinotta, V., Cifuentes, A. *Electrophoresis*  
9  
10 2009, 30, 1734-1742.  
11  
12 [22] Bi, W., Lei, S., Yang, X., Xu, Z., Yuan, H., Xiao, D., Choi, M. M. F. *Talanta* 2009, 78,  
13  
14 1167-1172.  
15  
16 [23] Castro-Puyana, M., Garcia-Ruiz, C., Crego, A. L., Marina, M. L. *Electrophoresis* 2009,  
17  
18 30, 337-348.  
19  
20 [24] Kodama, S., Yamamoto, A., Ohura, T., Matsunaga, A., Kanbe, T. *J. Agric. Food Chem.*  
21  
22 2003, 51, 6128–6131.  
23  
24 [25] Kodama, S., Yamamoto, A., Saitoh, Y., Matsunaga, A., Okamura, K., Kizu, R.,  
25  
26 Hayakawa, K. *J. Agric. Food Chem.* 2002, 50, 1312–1317.  
27  
28 [26] Kodama, S., Yamamoto, A., Matsunaga, A., Yanai, H. *Electrophoresis* 2004, 25, 2892-  
29  
30 2898.  
31  
32 [27] Kofink, M., Papagiannopoulos, M., Galensa, R. *Eur. Food Res. Tech.* 2007, 225, 569-  
33  
34 577.  
35  
36 [28] Kodama, S., Yamamoto, A., Sato, A., Suzuki, K., Yamashita, T., Kemmei, T., Taga, A.,  
37  
38 Hayakawa, K. *J. Agric. Food Chem.* 2007, 55, 6547–6552.  
39  
40 [29] Gel-Moreto, N., Streich, R., Galensa, R. *Electrophoresis* 2003, 24, 2716-2722.  
41  
42 [30] Simo, C., Rizzi, A., Barbas, C., Cifuentes, A. *Electrophoresis* 2005, 26, 1432-1441  
43  
44 [31] Simo, C., Martin-Alvarez, P. J., Barbas, C., Cifuentes, A. *Electrophoresis* 2004, 25,  
45  
46 2885-2891.  
47  
48 [32] Dominguez-Vega, E., Sanchez-Hernandez, L., Garcia-Ruiz, C., Crego, A. L., Marina, M.  
49  
50  
51  
52  
53  
54  
55  
56  
57  
58  
59  
60  
L. *Electrophoresis* 2009, 30, 1724-1733.

- 1  
2  
3 [33] Dominguez-Vega, E., Martinez-Giron, A. B., Garcia-Ruiz, C., Crego, A. L., Marina, M.  
4  
5 L. *Electrophoresis* 2009, 30, 1037-1045.  
6  
7  
8 [34] Martinez-Giron, A. B., Dominguez-Vega, E., Garcia-Ruiz, C., Crego, A. L., Marina, M.  
9  
10 L. *J. Chromatogr. B*, 2008, 875, 254-259.  
11  
12  
13 [35] Martinez-Giron, A. B., Garcia-Ruiz, C., Crego, A. L., Marina, M. L. *Electrophoresis*  
14  
15 2009, 30, 696-704.  
16  
17  
18 [36] Giuffrida, A., Tabera, L., Gonzalez, R., Cucinotta, V., Cifuentes, A. *J. Chromatogr. B*,  
19  
20 2008, 875, 243-247.  
21  
22  
23 [37] Herrero, M., Ibañez, E., Fanali, S., Cifuentes, A. *Electrophoresis* 2007, 28, 2701-2709.  
24  
25 [38] Qi, L., Chen, Y., Xie, M. Y., Guo, Z. P., Wang, X. Y. *Electrophoresis* 2008, 29, 4277-  
26  
27 4283.  
28  
29  
30 [39] Cavani, L., Ciavatta, C., Gessa, C., *J. Chromatogr. A* 2003, 985, 463-469.  
31  
32 [40] Andre, C., Berthelot, A., Thomassin, M., Guillaume, Y. C. *Electrophoresis* 2006, 27,  
33  
34 3254-3262.  
35  
36  
37 [41] Jarman, J. L., Jones, W. J., Howell, L. A., Garrison, A. W. *J. Agric. Food Chem.* 2005,  
38  
39 53, 6175-6182.  
40  
41  
42 [42] Huang, L., Lin, J. M., Xu, L. J., Chen, G. N., *Electrophoresis* 2007, 28, 2758-2764.  
43  
44 [43] Higdon, J. V., Frei, B. *Crit. Rev. Food Sci. Nutr.* 2003, 43, 89-143.  
45  
46  
47 [44] Tejero, I., Gonzalez-Garcia, N., Gonzalez-Lafont, A., Lluch, J. M. *J. Am. Chem. Soc.*  
48  
49 2007, 129, 5846-5854.  
50  
51 [45] Gotti, R., Fiori, J., Mancini, F., Cavrini, V. *Electrophoresis* 2004, 25, 3282-3291.  
52  
53 [46] Gotti, R., Furlanetto, S., Pinzauti, S., Cavrini, V. *J. Chromatogr. A* 2006, 1112, 345-352.  
54  
55 [47] Gotti, R., Furlanetto, S., Lanteri, S., Olmo, S., Ragaini, A., Cavrini, V. *Electrophoresis*  
56  
57 2009, 30, 2922-2930.  
58  
59 [48] El-Hady, D. A., El-Maali, N. A. *Talanta* 2008, 76, 138-145.  
60

- 1  
2  
3 [49] El-Hady, D. A., Gotti, R., Ei-Maali, N. A. *J. Sep. Sci.* 2008, *31*, 2252-2259.  
4  
5 [50] Gong, X. Y., Hauser, P. C. *Electrophoresis* 2006, *27*, 4375-4382.  
6  
7 [51] Piehl, N., Ludwig, M., Belder, D. *Electrophoresis* 2004, *25*, 3848-3852.  
8  
9 [52] Escarpa, A., Gonzalez, M. C., Crevillen, A. G., Blasco, A. J. *Electrophoresis* 2007, *28*,  
10 1002-1011.  
11  
12 [53] Yuan, L. M., Han, Y., Zhou, Y., Meng, X., Li, Z. Y., Zi, M., Chang, Y. X. *Anal. Letters*  
13 2006, *39*, 1439-1449.  
14  
15 [54] Fanali, S., Catarcini, P., Presutti, C., Quaglia, M. G., Righetti, P. G. *Electrophoresis*  
16 2003, *24*, 904-912.  
17  
18 [55] Li, M., Lin, X., Xie, Z. *J. Chromatogr. A* 2009, *1216*, 5320-5326.  
19  
20 [56] Mizrahi, S., Rizkov, D., Shames, A. I., Lev, O. *Electrophoresis* 2008, *29*, 3941-3948.  
21  
22 [57] Turiel, E., Martin-Esteban, A. *Anal. Bioanal. Chem.* 2004, *378*, 1876-1886.  
23  
24 [58] Kim, I. W., Hyun, M. H., Gwon, J., Jin, J., Park, J. H. *Electrophoresis* 2009, *30*, 1015-  
25 1021.  
26  
27 [59] Kwon, C., Yoo, K. M., Jung, S. *Carbohydr. Res.* 2009, *344*, 1347-1351.  
28  
29 [60] Park, H., Jung, S. *Electrophoresis* 2005, *26*, 3833-3838.  
30  
31 [61] Kodama, S., Aizawa, S., Taga, A., Yamashita, T., Yamamoto, A. *Electrophoresis* 2006,  
32 27, 4730-4734.  
33  
34 [62] Liu, K., Wang, H., Bai, J., Wang, L. *Anal. Chim. Acta* 2008, *622*, 169-174.  
35  
36 [63] Wang, J., Zhang, Y. Y., Wang, L., Bai, J. L. *J. Chromatogr. A* 2007, *1144*, 279-282.  
37  
38 [64] Ptolemy, A. S., Tran, L., Britz-McKibbin, P. *Anal. Biochem.* 2006, *354*, 192-204.  
39  
40 [65] Fan, L. Y., Cheng, Y. Q., Chen, H. L., Liu, L. H., Chen, X. G., Hu, Z. D. *Electrophoresis*  
41 2004, *25*, 3163-3167.  
42  
43  
44  
45  
46  
47  
48  
49  
50  
51  
52  
53  
54  
55  
56  
57  
58  
59  
60



**Table 1:** Reviews published in the period covered by this work (January 2003–October 2009) on chiral capillary electromigration methods and/or food analysis by CE-based approaches, following the review on this topic by Simo et al. [1].

Subject	Reference
Chiral capillary electrophoresis-mass spectrometry	[3]
Chiral separation using capillary electromigration techniques	[4]
Cyclodextrins in capillary electrophoresis enantioseparations	[5]
The role of cyclodextrins in chiral capillary electrophoresis	[6]
Chiral separations by CE employing cyclodextrins.	[7]
Enantioresolutions by capillary electrophoresis using glycopeptide antibiotics	[8]
Chiral analysis of pollutants and their metabolites by CE methods	[9]
Separation of enantiomers with charged chiral selectors in CE	[10]
The story of 20 and a few more years of enantioseparations by CE	[11]
Enantioseparation in CEC using polysaccharide-type chiral stationary phases.	[12]
Chiral capillary electrophoresis of agrochemicals	[13]
Chiral EKC and chiral microemulsion EKC	[14]
Capillary electromigration methods for food analysis	[15]
Advanced capillary electromigration methods for food analysis	[16]
Capillary electrophoresis in routine food analysis	[17]

**Table 2:** Food compounds analyzed by chiral capillary electromigration procedures.

Analyte	Food	Chiral selector	Reference
Several D,L-amino acids	Transgenic maize	$\beta$ -CD	[18]
Several D,L-amino acids	Balsamic, sherry, white wine, and cider vinegars	$\beta$ -CD	[19]
Several D,L-amino acids	Rice vinegar, Laozao	Complexation with Zn(II) L-arginine	[20]
Several D,L-amino acids	Transgenic soybean	3-monodeoxy-3-monoamino- $\beta$ -CD	[21]
D,L-Tyrosine	Dietary supplements	Derivatization with R(-)-4-(3-isothiocyanatopyrrolidin-1-yl)-7-(N,N-dimethylaminosulfonyl)-2,1,3-benzoxadiazole	[22]
Carnitine	Infant formulas	Succinyl- $\gamma$ -CD	[23]
Imazalil	Orange	2-hydroxypropyl- $\beta$ -CD	[24]
Vinclozolin	Wine	$\gamma$ -CD	[25]
Several catechins	Tea	6-O-alpha-D-glucosyl- $\beta$ -CD	[26]
Catechin and epicatechin	Various plant food samples	Hydroxypropyl- $\gamma$ -CD	[27]
Isoxanthohumol	Beer	Hydroxypropyl- $\gamma$ -CD	[28]
Flavanone-7-O-glycosides	Sweet orange, mandarin, grapefruit, lemon, and sour or bitter orange	Neutral and charged CDs	[29]

**FIGURE LEGENDS**

**Figure 1.** Chiral CE-ESI-TOF-MS extracted ion electropherograms from a wild and transgenic soybean. Bare fused-silica capillary with 50  $\mu\text{m}$  ID and 85 cm of total length. Running buffer: 50 mM ammonium hydrogen carbonate at pH 8.0 with 0.5 mM 3-monodeoxy-3-monoamino- $\beta$ -cyclodextrin as chiral selector. All samples injected for 25 s at 0.5 psi. Separation was performed at 30 kV (38  $\mu\text{A}$ ) and 25°C. Sheath liquid: water-2-propanol (50:50, v/v) delivered at 0.24 ml/h. ESI polarity in the positive mode with a 0.3 bar nebulizer and 4 l/min dry gas at 180°C. MicroTOF scan from 200 to 2000 m/z every 60  $\mu\text{s}$  using a prepulse storage of 11.7  $\mu\text{s}$ . Redrawn from [21].

**Figure 2.** Electropherogram measured from some mixed pairs of dansylated standard amino acid enantiomers using a running buffer of 100mM boric acid, 5mM ammonium acetate, 3mM Zn(II) and 6mM L-Arg, adjusted to pH 8.0 with solid Tris. Capillary: 50  $\mu\text{m}$  id.  $L_t$  57 cm (50 cm effective length); injection: 0.5 psi for 3 s; voltage: -20 kV; temperature: 20 °C; UV detection: 214 nm. Peak identity: (A) 1. D-Asp, 1'. L-Asp; 2. D-Leu, 2'. L-Leu; 3. D-Ala, 3'. L-Ala; 4. D-Lys, 4'. L-Lys; (B) 5. D-Ile, 5'. L-Ile; 6. D-Tyr, 6'. L-Tyr; 7. D-Met, 7'. L-Met; 8. D-Asn, 8'. L-Asn; (C) 9. D-Glu, 9'. L-Glu; 10. D-Thr, 10'. L-Thr; 11. D-Orn, 11'. L-Orn; (D) 12. D-Phe, 12'. L-Phe; 13. D-Ser, 13'. L-Ser; 14. D-His, 14'. L-His. (E) Electropherogram measured from the supernate of a rice vinegar diluted ten times with water. Peak identity: 1. L-Asp; 2. L-Tyr; 3. L-Met; 4. D-Ser; 5. L-Ser; 6. D-His; 7. L-His. Redrawn from [38].

**Figure 3.** Electropherograms of (A) standard solution (20 mg/L racemic imazalil); (B) orange sample 1; (C) orange sample 2; (-) and (+) represent (-)- and (+)-imazalil, respectively. The BGE was composed of 4 mM 2HP- $\beta$ -CD containing 5 mM ammonium dihydrogenphosphate-

1  
2  
3 50 mM phosphate buffer (pH 3.0). Samples were injected at a pressure of 50 mbar for 2 s.  
4  
5  
6 Separation was performed in a fused-silica bubble cell capillary of 64.5 cm (effective length  
7  
8 56 cm) x 75  $\mu$ m i.d. The capillary was kept at 20 °C. The analytes were detected at 200 nm.  
9  
10 The power supply was operated in the constant-voltage mode, at +25 kV. Redrawn from [24].  
11  
12

13  
14  
15 **Figure 4 .** Basic chemical structure of flavan-3-ols and structures of catechin and epicatechin  
16  
17 enantiomers.  
18

19  
20  
21  
22 **Figure 5.** Chiral separation of DNS-amino acids in a microchip with 7 mm of separation  
23  
24 length. Electrical field strength: 2012 V/cm. Electrolyte: 2% HS- $\gamma$ -CD, 25 mM  
25  
26 triethylammonium phosphate buffer, pH 2.5. Peak identification, L- and D- forms of: 1, DNS-  
27  
28 tryptophan; 2, DNS-norleucine; 3, DNS-phenylalanine; 4, DNS-methionine; 5, DNS-aspartic  
29  
30 acid; 6, DNSaminobutyric acid; 7, DNS-leucine; 8, DNS-norvaline; 9, DNS-glutamic acid.  
31  
32 Redrawn from reference [51].  
33  
34  
35  
36  
37  
38  
39  
40  
41  
42  
43  
44  
45  
46  
47  
48  
49  
50  
51  
52  
53  
54  
55  
56  
57  
58  
59  
60

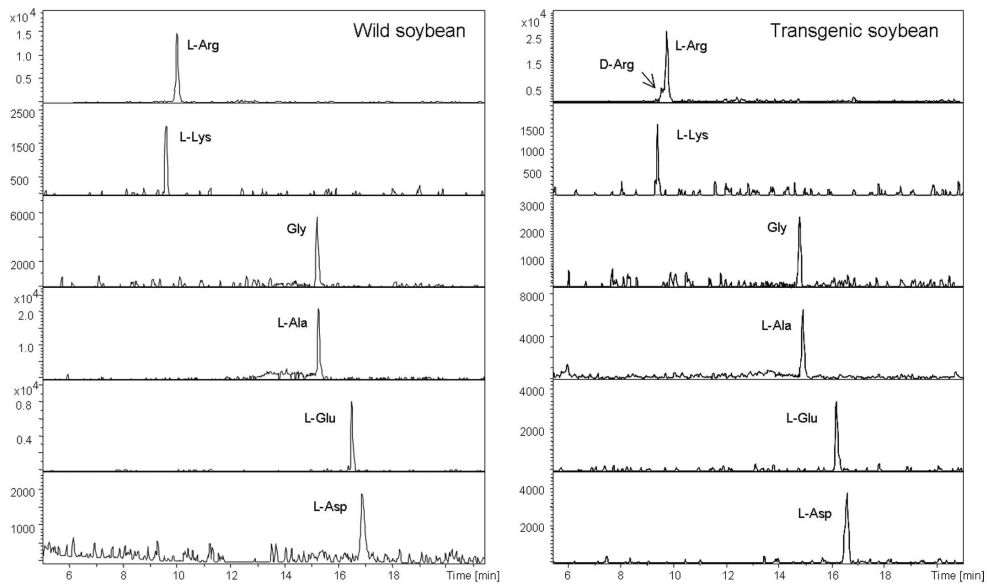


Fig 1  
185x110mm (300 x 300 DPI)

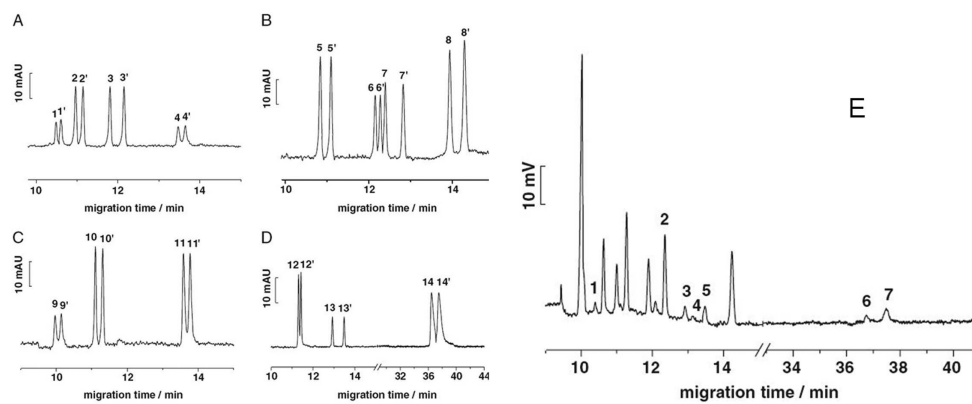


Fig 2  
197x84mm (300 x 300 DPI)

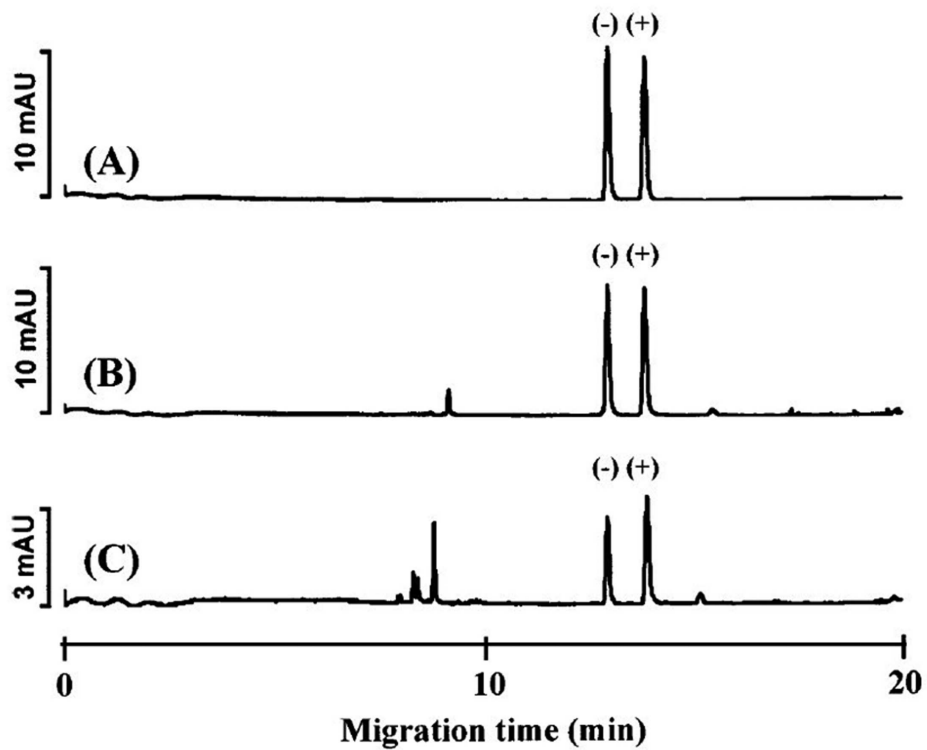


Fig 3  
199x162mm (300 x 300 DPI)

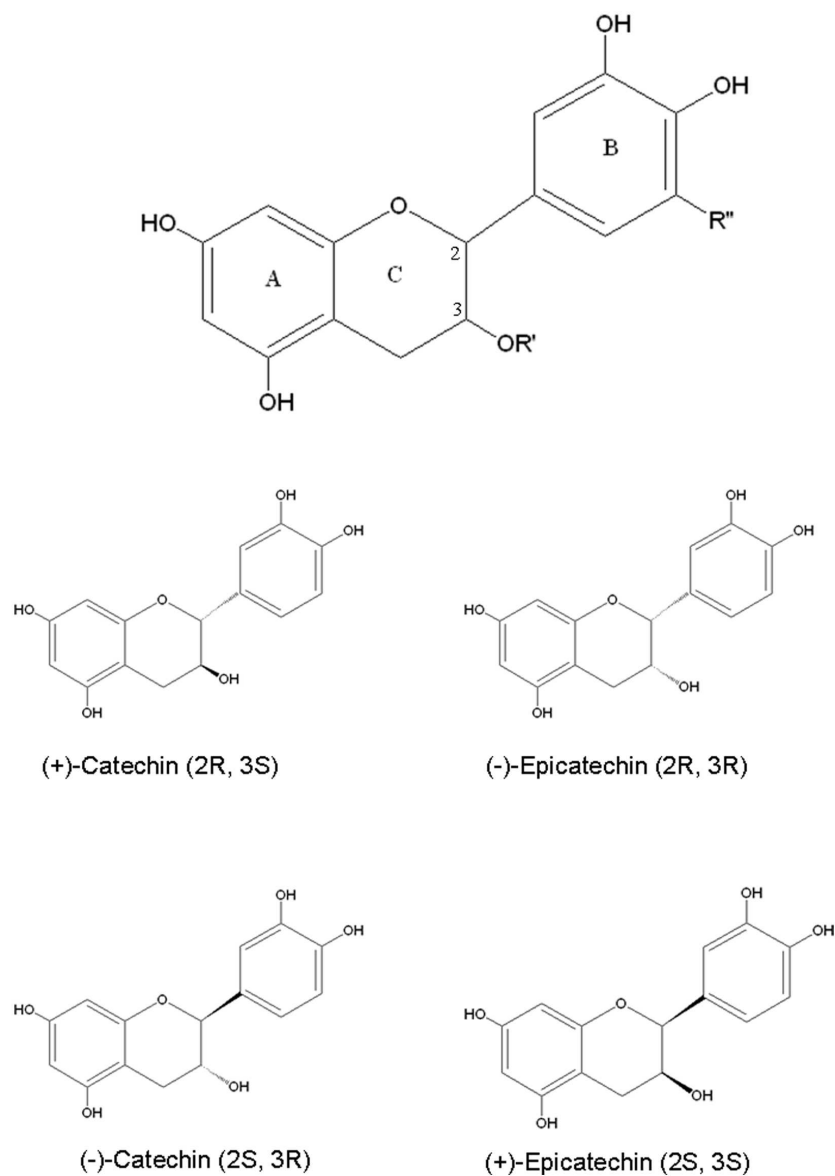


Fig 4  
144x199mm (300 x 300 DPI)



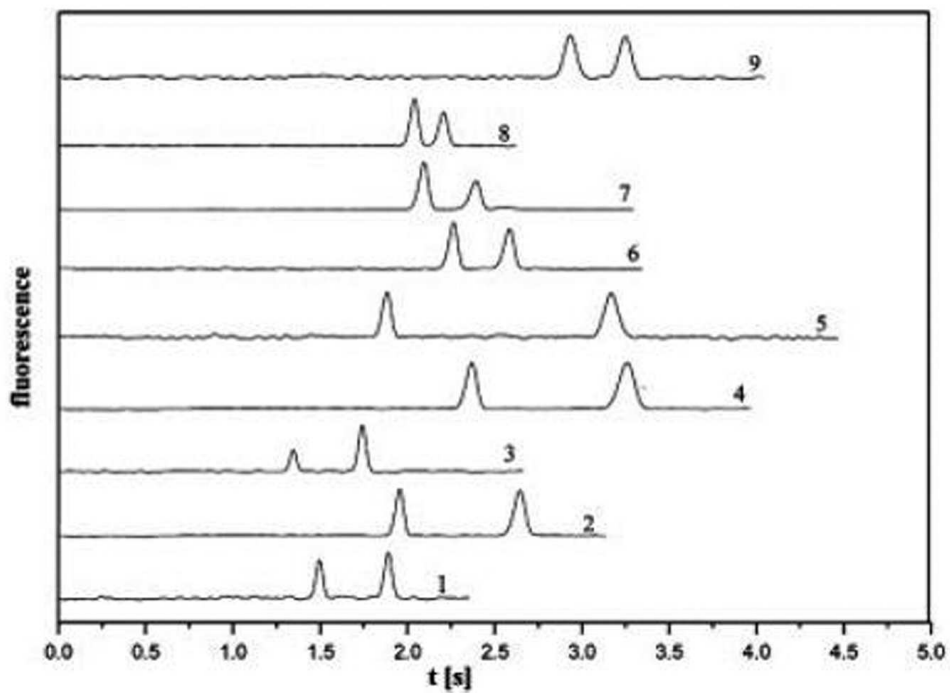


Figure 5  
119x91mm (300 x 300 DPI)