



HAL
open science

Comparative Integration Context Theory: Participation and Belonging in New Diverse European Cities

Jens Schneider, Maurice Crul

► **To cite this version:**

Jens Schneider, Maurice Crul. Comparative Integration Context Theory: Participation and Belonging in New Diverse European Cities. *Ethnic and Racial Studies*, 2010, 33 (07), pp.1249-1268. 10.1080/01419871003624068 . hal-00598966

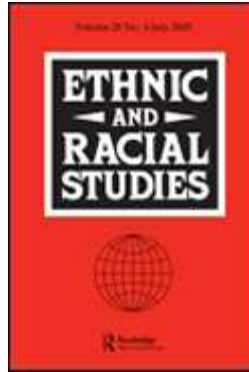
HAL Id: hal-00598966

<https://hal.science/hal-00598966>

Submitted on 8 Jun 2011

HAL is a multi-disciplinary open access archive for the deposit and dissemination of scientific research documents, whether they are published or not. The documents may come from teaching and research institutions in France or abroad, or from public or private research centers.

L'archive ouverte pluridisciplinaire **HAL**, est destinée au dépôt et à la diffusion de documents scientifiques de niveau recherche, publiés ou non, émanant des établissements d'enseignement et de recherche français ou étrangers, des laboratoires publics ou privés.



**Comparative Integration Context Theory:
Participation and Belonging in New Diverse European Cities**

Journal:	<i>Ethnic and Racial Studies</i>
Manuscript ID:	RERS-2009-0148.R1
Manuscript Type:	Jens Schneider / Maurice Crul THEORISING INTEGRATION AND ASSIMILATION
Keywords:	Integration, assimilation, Theory, Second Generation, Diversity, TIES



Comparative Integration Context Theory: Participation and Belonging in New Diverse European Cities¹

Maurice Crul and Jens Schneider

Abstract

Drawing upon results from the TIES survey on the second generation in eight European countries the authors propose a new perspective on integration or assimilation. The proposed *comparative integration context theory* argues that participation in social organizations and belonging to local communities across European cities is strongly dependent on the integration context. Differences in integration contexts include institutional arrangements in education, the labour market, housing, religion and in legislation. Differences in the social and political context are especially important for social and cultural participation and belonging. The TIES data show high degrees of local involvement in the second generation and the dwindling centrality of single ethnic belongings – a reflection of the dramatically changing ethnic and (sub) cultural landscapes in cities in Europe. The article challenges established notions of ‘newcomers’ and ‘natives’, explores the ‘remaking of the mainstream’ and argues to investigate mobility pathways for a better understanding of integration or assimilation as on-going processes.

Keywords: theory, integration, diversity, second generation, TIES, immigration

Introduction

Post-war migration flows to Europe have changed the ethnic landscape of large cities to a similar extent as in the United States. Those who, in the US, are referred to as post-1965 immigrants have a parallel in the labour migrants in Europe, who arrived at the end of the fifties until the beginning of the seventies. As a result, European migration scholars have closely followed the US debate, and the ideas put forward by the authors of segmented assimilation and new assimilation theory have been particularly influential. The central idea of segmented assimilation theory is that there is more than one way to assimilate into American society (Portes and Rumbaut 1996; 2001), while the authors of new assimilation theory convincingly show that the dominant stream remains ‘straight line assimilation’ -- although perhaps not in all regards in the second, but at least in the third generation (Alba

1
2
3 and Nee 2003, pp. 271-292). The New York study of the second generation confirms this,
4
5 and even speaks of a 'second generation advantage' (Kasinitz et al. 2008). As early as
6
7
8 1997 there has been much debate about the stagnation among some second generation
9
10
11
12
13
14
15
16
17
18
19
20
21
22
23
24
25
26
27
28
29
30
31
32
33
34
35
36
37
38
39
40
41
42
43
44
45
46
47
48
49
50
51
52
53
54
55
56
57
58
59
60

and Nee 2003, pp. 271-292). The New York study of the second generation confirms this, and even speaks of a 'second generation advantage' (Kasinitz et al. 2008). As early as 1997 there has been much debate about the stagnation among some second generation Mexicans, which is obvious and substantial, affecting one of the largest and fastest growing groups (Rumbaut 2005). From our perspective advancing and stagnation do not need to be mutually exclusive. Among the second generation in Europe the dominant trend is a remarkable upward mobility (Crul and Schneider 2009), but there are also portions of each group that lag behind. In some countries this group is quite sizeable, so both trends are visible and need to be addressed.

Both American theories also point to the importance of *context*. This refers as much to the reception context (see, for instance, the different treatment of illegal migrants compared to invited political refugees), the societal context (e.g. the level of racism in the US towards certain ethnic groups), as to the different aspects of local context (e.g. neighbourhood and economy; cf. Waldinger 2001). Furthermore, we have learned, especially from the work of Zhou (2005) and Gibson (1989), of the importance of networks in (heterogeneous) communities like the Chinese and the Sikhs.

The most interesting difference with the US is that Europe consists of different countries. This gives us the opportunity to compare outcomes in the second generation across different national contexts. In this regard Europe can be considered a 'natural laboratory' for integration processes. This was the starting point for an international research project on the second generation in fifteen European cities, the TIES Survey.² European comparative research can offer the American debate insights that are difficult to get at in one-country research settings. The first results of the TIES project show that differences in institutional arrangements have a huge effect. This alerts us to the importance of the specifics of the national integration context, which is a somewhat understudied topic in the US.

The second generation in European large cities

In this first part we want to look at the second generation in European cities. We will discuss how the second generation is claiming its place in the cities, is taking up professional positions and to what extent they are 'remaking the mainstream' in the European cities. We discuss all these issues from the perspective of the second generation as active agents of change in the cities. In the second part of the article we will discuss how different integration contexts help or obstruct the second generation in claiming a place in the cities.

The second generation: the established group in the city

American assimilation theories are mostly based on research on the broad category of children of immigrants. In fact, in the United States it usually includes the native born children of immigrants as well as those who arrive together with their parents (i.e. the so-called 'in-between-' or 1.5 generation).³ The term 'second generation' in the strict demographic sense only refers to those born in the country of immigration, and we believe that it is important to clearly distinguish these two groups. Second and in-between generations differ radically in at least one central aspect: the second generation is born into the society of immigration, and unlike their parents and the children of the in-between generation they do not have a migration experience. They do not need to adapt in a society new to them. In Europe, they are also overwhelmingly citizens of that country. As Schinkel (2007) argues, for the second generation there is no such place as 'outside' of society.

This is an important point for the theoretical debate: if the second generation does not need to integrate or assimilate into society, the common opposition between 'the society' (or the 'natives', or the 'autochthonous', or the 'residents') on the one side, and immigrants as 'newcomers' on the other, does not apply to the second generation. We are not

1
2
3 dealing with a clearly defined group of in- and outsiders (cf. Glick-Schiller and Wimmer
4
5 2002).⁴
6
7

8 Second generation youngsters are members of the society from the day they are
9
10 born. As such, we can look at the second generation as being part of (or participating in) a
11
12 plurality of social organizations (Luhmann 1989) -- for example, their families, neighbour-
13
14 hoods, schools, peer groups, work units or more or less organised free time and leisure ac-
15
16 tivities (sports clubs, etc.).
17
18

19
20 In fact, changing the perspective, we have to look differently at major cities. Young
21
22 people from the second generation are frequently the 'established group' in these cities to-
23
24 day. The TIES data show their biographical continuity -- they were born, grew up and are
25
26 still living in the same city. In contrast, in the TIES study we found that many respondents
27
28 of native-born parents moved from other parts of the country to the major cities because of
29
30 study or work. When we look at attachment and involvement at the neighbourhood level,
31
32 as a result we find stronger involvement among the second generation than among age
33
34 peers with native-born parents. The following figure illustrates this with regard to the
35
36 German and Austrian cities in the TIES Survey.⁵ It compares the neighbourhood involve-
37
38 ment of native-born children of immigrants from Turkey and former Yugoslavia, and a
39
40 comparison group with native-born parents.⁶
41
42
43
44
45
46
47
48
49
50
51
52

[Figure 1]

53 This raises new questions about participation and belonging from a societal perspective: A
54
55 newly arrived college student of native born parents who moves into a cheap and ethnically
56
57 diverse working class neighbourhood in the city will still need some adaptation to this new
58
59
60

1
2
3 environment -- especially when coming from a small town or the countryside -- places
4
5 which are usually much less diverse in many ways.
6
7

8 This brings us to our second point: all young people, be they children of immi-
9 grants or of native-born parents, need to find their place in social organizations which are
10 crucial for 'survival' in society (cf. Bommes 2005; Schinkel 2007, pp. 130ff.). In larger
11 European and American cities this includes the need to cope with an environment that is
12 increasingly multi-ethnic and 'super-diverse'. And in some areas (like certain neighbour-
13 hoods or schools or working environments) this is sometimes more difficult for children of
14 native-born parents than for the second generation.
15
16
17
18
19
20
21
22
23
24
25
26

27 *The second generation: professional roles and other sub-cultural identities*

28
29 Another important issue is the use of the 'ethnic group' as an analytical category. Although
30 the critique of the concept of the 'ethnos' as a static homogeneous unit has left anthropol-
31 ogy (Barth 1969; Cohen 1994) and is now widely spread within the social sciences, much
32 migration research implicitly assumes that actions and views of migrants and their children
33 are all motivated by the migration experience and/or their 'ethnic heritage'.⁷ Again, look-
34 ing particularly at the second generation, we think that this is debatable. To illustrate our
35 point, here is the 'case study' of Naima:
36
37
38
39
40
41
42
43
44

45 Naima is a young unmarried woman of Moroccan descent who studies Spanish and French
46 linguistics in Amsterdam. The young woman speaks Dutch with a slight accent typical for
47 Amsterdam, where she was born and raised. On the other hand, Moroccan Arabic is her
48 mother (and father) tongue; with both parents originally from the North of Morocco the
49 language spoken at home was always Moroccan. Especially on the mobile phone with Mo-
50 roccan friends and family she frequently switches to her mother tongue -- also because it
51 gives more privacy in public situations. She still lives with her parents in the same
52 neighbourhood where she grew up -- partly because it allows her to save money on rent,
53
54
55
56
57
58
59
60

1
2
3 but also because she feels comfortable in the area. At the last Football World Champion-
4 ship 2006 her favourite team was Holland (Morocco was not qualified), but if Morocco had
5 played her sympathies clearly would have been with the Moroccan team. Naima is 'well
6 integrated' into a variety of different *social organizations* like, for example, her family, the
7 neighbourhood, the university, and a mentor project that aims to help out disadvantaged
8 children in school. Other domains could most probably be added, for example her work-
9 place: a secondary school where she is currently doing an internship. She wears a headscarf
10 and is engaged to a first generation Moroccan man who obtained his university diploma
11 from Morocco.
12
13
14
15
16
17
18
19
20
21

22
23 Naima opposes to the idea that she first and foremost is seen as Moroccan simply for the
24 reason that she is a child of immigrant parents. Many, if not most of her attitudes and ac-
25 tions are not based on the fact of being a child of immigrants. In many aspects she resem-
26 bles the 'typical' Dutch university student, and the most important driving forces behind
27 most of her actions are her age (and being young at a specific moment in time), her gender,
28 and high degree of education. Among many other aspects she certainly is 'Moroccan' too,
29 but it becomes problematic, if it is used *per se*.
30
31
32
33
34
35
36
37
38

39
40 Naima belongs to the growing group of highly educated within the Moroccan com-
41 munity in the Netherlands. The second generation, partly because of their entrance into
42 professional careers, is embracing new professional roles and identities. For Naima her
43 professional role as a teacher in secondary school is such a strong identifier.
44
45
46
47
48

49
50 From the perspective of *culture and identification*, the portrait of our case study of-
51 fers a much more ambiguous picture: in both main languages she is a native speaker, and
52 both are important and ever present means of communication in her daily life. She strongly
53 identifies as Moroccan, yet without apparent contradictions to feel Dutch as well. Now,
54 again the question is: what does that mean for her identification as a young woman living
55 in the Netherlands? Dominant mainstream perceptions and public discourses in most
56
57
58
59
60

1
2
3 Western countries implicitly or explicitly operate with normative settings here: it is clearly
4 preferred to be well-educated and not unemployed, to wear no headscarf, to have 'native'
5 friends and to not marry someone from Morocco. But to conclude that her attitudes and
6 actions are primarily motivated by her ethnic background is premature. Naima also
7 strongly identifies as an emancipated woman who wears a headscarf upon her own deci-
8 sion. The following table compares, for instance, higher educated (tertiary education)
9 women from the Moroccan second generation and from the comparison group in the Neth-
10 erlands and their opinions on gender roles. It specifically asks who should be the main per-
11 son responsible for taking care of the children:
12
13
14
15
16
17
18
19
20
21
22
23
24
25
26

27 [Table 1]
28
29
30
31

32 Both groups have almost identical responses on this question. To look at higher educated
33 women is of course just one possibility. Other meaningful social and (sub)cultural catego-
34 ries, such as e.g. youth-, political or bohème-cultures, can also be important for the second
35 generation. While for the first generation their origin is an almost all-encompassing iden-
36 tity (both ascribed and prescribed), this is no longer true for most of the second generation.
37 The idea of 'super-diversity' presented by Vertovec (2006) describes the growing diversi-
38 fication among city dwellers. We would add that super-diversity is also becoming visible
39 *across* ethnic lines, sometimes challenging the existing ethnic hierarchies -- like for in-
40 stance second-generation Turkish doctors in hospitals in Amsterdam serving many elderly
41 patients who come from lower or middle class non-migrant families.
42
43
44
45
46
47
48
49
50
51
52
53

54 Obviously, in migration research we choose survey respondents because they *de-*
55 *mographically* belong to a certain 'group', in order to compare them to 'groups' with other
56 demographic characteristics. That is also one of the ways we looked at the data in the TIES
57
58
59
60

1
2
3 survey. However, we have to be aware that this 'group'-definition is merely an operational
4
5 departure point for analysis, to *explain* differences with this *a priori* definition is, in the
6
7 worst case, tautological (cf. Latour 1999, p. 71). Moreover, taking the 'group'-hypothesis
8
9 simultaneously as *explanans* and *explanandum* tends to obscure the fact that the degree of
10
11 variation *within* a 'group', as much as other lines of differentiation may be more relevant.
12
13
14

15
16
17
18 *The second generation: 'remaking the mainstream'*

19
20 Cities are today subject to a gigantic turnover of the population; statistically, in many of
21
22 them almost the entire population is exchanged within less than one generation.⁸ While
23
24 most of the European cities have been multi-ethnic for a long time -- or even since their
25
26 foundations as *modern* cities -- it is a relatively new phenomenon that the formerly clearly
27
28 defined ethnic majority group is becoming a minority group like the other ethnic groups. In
29
30 many European cities the majority of the population under age twelve is already of immi-
31
32 grant origin. The authors of the New York study also point out that the group of non-
33
34 Hispanic whites is still sizable (although only when taking all European groups together),
35
36 but it has in reality become just one of the many ethnic minority groups in the city. This
37
38 challenges standard notions of 'mainstream' and 'ethnic majority group'.
39
40
41
42

43
44 The fact that they are losing their numeric majority position in the younger cohorts
45
46 of larger cities does not mean that the 'majority group' would necessarily also lose its
47
48 status as the most dominant group in social and economic terms. But Alba (2009) shows
49
50 that the demographic development of the cities does also challenge the 'ethnic hierarchy'
51
52 in the long run. Alba suggests that in the future the 'mainstream', simply for demographic
53
54 reasons, will incorporate non-white groups as well. From our point of view, we seem to
55
56 need a new vocabulary to describe this new diverse urban reality.
57
58
59
60

1
2
3 We turn again to the TIES data to see how the new urban diversity affects the lives
4 of both second generation groups and the comparison group. We do this by looking at the
5 three best friends of our respondents. The following table compares second generation
6
7
8
9
10
11
12
13
14
15
16
17
18
19
20
21
22
23
24
25
26
27
28
29
30
31
32
33
34
35
36
37
38
39
40
41
42
43
44
45
46
47
48
49
50
51
52
53
54
55
56
57
58
59
60

We turn again to the TIES data to see how the new urban diversity affects the lives of both second generation groups and the comparison group. We do this by looking at the three best friends of our respondents. The following table compares second generation Turks and members of the comparison group in Germany and France (juxtaposing the higher educated group with the entire research population).

[Figure 2]

The individual reality of the second generation Turks reflects their multi-ethnic environment in the cities. The TIES survey shows that they have friendships with children of native-born parents, but also from other ethnic minority groups. Looking at the university students here reveals an interesting finding: those of Turkish background have the most mixed friendship groups, while the students in the comparison group the least. Their level of interaction with people from other ethnic groups is remarkably low, especially for the age cohorts to which they belong and the neighbourhoods they live in.

The highly educated second generation, through their studies and their work, most often engages with people outside of their own group -- especially with middle class friends of native parentage. Their friends, as the TIES survey shows, are also mostly highly educated. They are often found in jobs in the city administration, and in the educational or social work sector. These jobs give them, to some extent, the possibility to influence city policies and politics (Crul et. al 2008). They therefore definitely play an (important) role in 'remaking the mainstream'. However, the size of this group differs strongly across cities and countries. But also the lower educated second generation has, in majority, one or more best friends outside their own ethnic group -- through work, school or their neighbourhood.

1
2
3 There are three groups that mostly interact with their own ethnic group members.
4
5 These are the higher educated of native parentage and parts of the lower educated in both
6
7 the second generation and the comparison group. For the highly educated this is the con-
8
9 tinuation of the status quo before and a reflection of (still) lower ethnic diversity in the
10
11 higher streams of society. For the lower educated, both of native parentage and of the sec-
12
13 ond generation, this is more problematic, because their more limited networks (also across
14
15 ethnic lines) potentially harm their access to better education, work and housing.
16
17
18

19
20 'Reconsidering the mainstream' thus may radically shift the focus on which group
21
22 is more or less 'assimilated' or 'integrated'. Children of native-born parents with no con-
23
24 nections outside their own group may find themselves outside the multicultural 'main-
25
26 stream'.
27
28
29
30

31 **Comparative Integration Context Theory: Theoretical and methodological implica-** 32 **tions** 33

34
35
36 We have first discussed the position of the second generation from the perspective of them
37
38 being active agents of change in the cities. But we could already see in the tables that the
39
40 second generation is not in all the cities in the same way in a position to claim their partici-
41
42 pation and belonging. Therefore we now want to look at the role of the integration *contexts*
43
44 that either help or hinder taking up certain positions. We will argue in the following that
45
46 participation and belonging of the second generation in European cities is strongly depend-
47
48 ent on the integration context.
49
50
51

52
53 Differences in integration contexts include institutional arrangements in education,
54
55 the labour market, housing, religion and in legislation. Differences in the social and politi-
56
57 cal context are especially important for social and cultural participation and belonging. Part
58
59 and parcel of the integration context is the diversity of today's European cities as we dis-
60

1
2
3 cussed it in the previous section. Young people of all ethnic groups (including the group
4 that was formerly known as the ethnic majority group) need to integrate into the reality of a
5
6 (super) diverse city youth population with different biographies and with longer or shorter
7
8 histories living in the city.
9
10

11
12 In the following we describe our *comparative integration context theory*, as we
13 named it, in more detail and introduce our main concepts *participation* and *belonging*
14 briefly.
15
16
17
18
19
20
21

22 *The context of institutional arrangements*

23
24 We want to address the importance of local and national contexts in which young persons,
25 second generation or with native-born parents, have to find a position and place. This is not
26
27 a new topic: the US-American theories deal extensively with context, for example, with
28
29 different modes of incorporation (e.g. Portes et al. 2009) or the neighbourhood context
30
31 (e.g. Kasinitz et al. 2008, pp 150-158). National school systems and access conditions to
32
33 the labour market are also generally studied in their differentiating effects on children from
34
35 different ethnic groups and social classes, but not as part of *the system's idiosyncrasy* --
36
37 which generally comes to the fore only in comparison across national school or labour
38
39 market systems.
40
41
42
43
44

45
46 Taking the institutional arrangements of a country for granted or as given can seri-
47
48 ously affect the way we perceive problems of participation and belonging among the sec-
49
50 ond generation. Comparing different ethnic groups in the same local or national contexts
51
52 automatically sets the focus on the immigrant groups themselves: why do some under per-
53
54 form compared to the 'native' group, but others do not? The seemingly most logical expla-
55
56 nation at hand then is culture and class. We are not saying that these explanations are un-
57
58 important -- far from it -- but they do not tell us the whole story.
59
60

1
2
3 Jeffrey Reitz, in his book *Warmth of welcome* (1998), points out the effect of dif-
4 ferent institutional settings for immigrants in Canada, Australia and the US. We want to
5 take Reitz' argument a step further into the European context, where institutional arrange-
6 ments are much more diverse than in the three countries he compared. We will concentrate
7 in this article mainly on one key institution: education. But national institutional arrange-
8 ments in the labour market and housing play similar roles.
9

10
11
12 If we take, for example, second generation Turks in Germany, we can explain their
13 predominantly disadvantaged situation in education to a significant degree through their
14 low socio-economic background. The remaining part is then usually attributed to cultural
15 differences. But if we compare second generation Turks *across* several European coun-
16 tries, we can see that they are doing much better in other countries: only 3 per cent enter
17 higher education in Germany, as compared to almost 40 per cent in Sweden and France.
18 These large differences in outcomes across countries also remain when the analysis con-
19 trols for the education of the fathers -- as in the following table:⁹
20
21
22
23
24
25
26
27
28
29
30
31
32
33
34
35
36
37
38
39
40
41
42

[Table 2]

43
44 The impressive differences displayed here can largely be explained by the different
45 educational institutional arrangements in each country. Among these the most influential
46 factors are starting age in school, age of first track selection, the upward permeability
47 within secondary education, and the existence of a long or indirect route to higher educa-
48 tion through the vocational column. In Germany compulsory school starts at age six -- later
49 than in most other European countries -- and in most areas children are selected into the
50 academic or vocational column at the age of ten, after only four years of joint learning. In
51 countries like the Netherlands this selection occurs after eight years, and even when se-
52
53
54
55
56
57
58
59
60

1
2
3 lected into the lower qualifying tracks, many still manage to reach higher education
4
5 through the vocational column (although at the cost of three years extra education). In
6
7 Germany the vocational route to higher education is not seen and used to the same extent
8
9 as an alternative. These two aspects of the institutional arrangements in German education
10
11 already determine to a large degree the low educational position of the second generation
12
13
14
15 Turks.

16
17 We should be aware that institutional contexts differ greatly from country to coun-
18
19 try in Europe (or even from city to city in one country), even though the normative debate
20
21 is similar-- as, for example, the debate in Germany and France about beginning to learn
22
23 German/French as a second language at an early age. Yet, the general institutional ar-
24
25 rangements for second language learning are very different -- with obvious relevance for
26
27 the outcomes in school. At the same time, this is also true the other way round: there is still
28
29 a lot of difference between national integration policies on the one side, and government
30
31 rhetorics across countries on the other, ranging from multiculturalism to right wing popu-
32
33 list and assimilative stances. However, on the city level, we frequently observe rhetoric-
34
35 independent, pragmatic ways in which state agencies and societal institutions assess the
36
37 specific necessities of dealing with immigrants and their children, and with the cultural di-
38
39 versity of their clientele (Heckmann et al. 2001; Vermeulen 1997; Vermeulen and Stotijn
40
41 2009). For this reason we advocate the study of actual practice next to the public discourse
42
43 and national integration policies.
44
45
46
47
48
49

50
51 To look at participation in key institutions in different European cities requires two
52
53 different perspectives: From the societal perspective it means to look at the national and
54
55 local 'institutional arrangements' facilitating or hampering participation and access, repro-
56
57 ducing or reducing inequality. 'Failed participation' can thus be conceived as an indicator
58
59 of obstacles to access and participation. An example of the latter could be the late start of
60

1
2
3 compulsory schooling, which has a disproportional negative affect on children of immi-
4 grants. Here we actually invert the common academic and policy perspective on ‘integra-
5 tion’. The question is not why individuals fail to participate but why institutions fail to be
6 inclusive. The first findings of the TIES project show that institutional arrangements in
7 education in the European situation are closely correlated to the level of education the sec-
8 ond generation is able to reach.
9

10
11
12
13
14
15
16
17
18
19
20
21
22
23
24
25
26
27
28
29
30
31
32
33
34
35
36
37
38
39
40
41
42
43
44
45
46
47
48
49
50
51
52
53
54
55
56
57
58
59
60

The second perspective includes the agency of individuals and groups, actively de-
veloping options and making choices, challenging given opportunities and structural con-
figurations. In the German half-day primary school system it is for instance expected that
parents actively help and assist with homework. In the complex Dutch school system in-
formation about the school system is of crucial importance. In different contexts different
subjective and objective *options* of individuals to gain access and to claim participation
depend on different individual and group resources (i.e. the economic, social and cultural
capital). With the comparative integration context theory we study both perspectives by
looking at the actual practices of both institutions and individuals or groups.

The context of social and political discourse

Independent of their direct impact on policies and institutional practices, government
rhetorics have an influence on the *political and social climate*, directly affecting immi-
grants’ and their children’s quest for a place and position in the immigration society. On
the one side, integration practices are shaped and pre-structured by specific institutional
contexts (including legal aspects, such as citizenship regimes and policies, and institutional
arrangements in, for instance, education and the labour market). On the other side integra-
tion practices are shaped by rules and ‘habits’ (in the sense of Bourdieu’s *habitus*) in estab-

1
2
3 lishing and taking care of social relations and social interaction in a given societal setting
4
5
6 (Bourdieu 1977; 1984).
7

8 We distinguish three basic types of discursive contexts: political discourse, the so-
9
10 cial discourse of everyday communication and interaction, and media discourse. The po-
11
12 litical climate and implicit or explicit stereotypes and hierarchies of groups have a constant
13
14 effect on feelings of belonging. In addition, institutional arrangements can have ‘discursive
15
16 qualities’. Citizenship regimes, for example, are frequently reflected in everyday discourse
17
18 on the national belonging of groups and individuals (Schneider 2007). The term ‘belong-
19
20 ing’ entails the possibility of simultaneousness, of different forms of belonging in different
21
22 contexts, and of possible changes over time. ‘Belonging’ has an individual and an institu-
23
24 tional level: from an individual perspective the challenge is to find a widely unquestioned
25
26 position and place. Belonging in the sense of ‘functional identities’ (cf. Devereux 1978, pp.
27
28 137ff.) means the ability to develop social relations along ‘strong’ and ‘weak ties’
29
30 (Granovetter 1973) in many different social contexts. From institutional perspective the
31
32 second generation is likely to experience *boundaries* ‘brightened or blurred’ (Alba 2005)
33
34 by institutional arrangements, public and social discourses, and inclusionary/exclusionary
35
36 attitudes of groups or individuals. ‘Group factors’ can be part of the boundary making
37
38 process too, especially when there is a cultural and/or group dynamic preventing or pro-
39
40 moting belonging and participation. Group factors are however never static or fixed: no
41
42 group in any context is immune to external influences. The effects of these influences are
43
44 generally best noted in the second generation (cf. Alba and Nee 2003, p.215).
45
46
47
48
49
50
51
52

53 The following table shows the ‘warmth’ of feelings among comparison group
54
55 members in three different cities in the TIES survey towards people of Moroccan descent
56
57 on a scale from 0 to 100 degrees Celsius. The respondents were told that 50 degrees would
58
59 be equivalent to neutral feelings. The comparison group was interviewed in the same
60

1
2
3 neighbourhoods where the second generation was sampled, so the results should reflect
4
5 their opinion toward their fellow neighbourhood residents:
6
7
8
9

10 [Table 3]
11
12
13

14
15 The social and discursive climate towards Moroccans is apparently rather negative in Am-
16
17 sterdam (almost two thirds express lower than neutral feelings) and quite positive in Ma-
18
19 drid.
20
21

22 The discursive context represents a complex field, in which the feelings of belong-
23
24 ing in the second generation are in constant tension with political, media and social repre-
25
26 sentations of their position in society. The wider dominant discursive context in most
27
28 European countries presents a serious challenge here, because it overemphasises the ethnic
29
30 background as the main signifier in all societal contexts. Depending on the degree to which
31
32 belonging to the local or national community is discursively called into question, we find
33
34 ambiguity and 'hybridity' in the feelings of belonging of the second generation groups --
35
36 again probably the most adequate answer to the heterogeneous realities of European cities.
37
38
39
40

41 As a consequence, although 'national identity' is increasingly embraced and
42
43 claimed by the second generation, this label especially is often problematic. Going back to
44
45 the example, as the following figure shows, for the Moroccan second generation claiming
46
47 to be Dutch seems far more problematic than being Spanish or Belgian.
48
49
50

51
52 [Figure 3]
53
54
55

56
57 Interestingly, citizenship seems not to play a major role here, the numbers for dual and
58
59 immigration country nationality do not significantly differ for second generation Moroc-
60

1
2
3 cans in the three cities. This is an indication that the discursive context is the most impor-
4 tant determinant here. At the same time we see that local identity can be a sort of 'substi-
5 tute' for national identity (especially for the second generation Moroccans in Amsterdam).
6
7
8 The differences between 'national' and 'local' belonging point to the importance of the
9
10 'discursive legitimacy' of specific 'labels'. In all TIES survey cities, for the second genera-
11
12 tion local belonging is more easily self-ascribed than national belonging, while this is not
13
14 the case with the comparison group.
15
16
17
18

19
20 In summary, with the *comparative integration context theory*, we argue that par-
21
22 ticipation and belonging in new diverse European cities is strongly dependent on the inte-
23
24 gration context. Differences in integration contexts include institutional arrangements in
25
26 education, the labour market, housing, religion and in legislation. Differences in the social
27
28 and political context are especially important for social and cultural participation and be-
29
30 longing.
31
32
33
34
35

36 *Comparative Integration Context Theory: Methodology*

37
38 The methodological starting point for us is to see how people *in practice* deal with the
39
40 challenges of finding a place and position in this new diverse urban reality. Here, we bor-
41
42 row from Bourdieu's notion of the 'theory of practice' and the importance of studying con-
43
44 crete practices in societal fields of individuals, groups and institutions in different contexts
45
46 and over time. So, instead of trying to fit the empirical complexities into pre-formulated
47
48 models we argue in favour of building our insights departing from the actual *practices and*
49
50 *options* of individuals and groups.
51
52
53
54

55
56 In most research 'integration' is only measured by the present state or the final out-
57
58 come in different domains. This could be the highest school diploma or the present job.
59
60 This approach makes it difficult to link outcomes with institutional arrangements. Present

1
2
3 state and final outcomes are the results of underlying processes over time. The analytical
4 emphasis on process transforms the generally more sharp line between 'success' and 'fail-
5 ure' at the end point into a more fuzzy sequence of failures and successes. It uncovers in-
6 between pathways, bifurcating at specific points during school or labour market careers. To
7 give an example: the educational results of second generation Turks in the Netherlands as
8 compared to other countries show a middle position (see table above). The 'classical' con-
9 clusion would say that the Dutch school system is not very selective. However, looking at
10 the school *trajectory* reveals that the Dutch school system is, in fact, one of the most selec-
11 tive systems tracking pupils into vocational versus academic tracks as early as age twelve.
12 However, the Dutch school system offers some repair for the early selection through the
13 vocational column. Judging only on the end results actually obscures the severe selection
14 processes in the transition from primary to secondary education. Only by bringing in the
15 *process* it is possible to link the outcomes at different stages of the school career to the in-
16 stitutional arrangements, like early selection and the possibility to move up from lower vo-
17 cational education to middle vocational education to be able in the end to enter higher edu-
18 cation. It is the crucial methodological link to operationalize our theoretical assumptions.

19
20
21
22
23
24
25
26
27
28
29
30
31
32
33
34
35
36
37
38
39
40
41 The controversy between new assimilation and segmented assimilation is partly
42 about looking at different life stages (youngsters versus young adults). The attitude of par-
43 ents resisting Americanisation for their young children, which segmented assimilation the-
44 ory has shown to be a possible path for upward mobility among Asian groups, may result
45 in 'classical assimilation', once the youngsters reach adulthood and access the middle-
46 class. Looking at life courses up and into adult life rather than only a particular part of that
47 trajectory may help to soften the rigidity of certain concepts (and their critique).
48
49
50
51
52
53
54
55
56
57
58
59
60

Final remarks on the transatlantic debate

The European debate has greatly and critically profited from the theoretical notions developed in the US. Our theoretical framework is actually built on the earlier descriptions of multi-ethnic city realities in the US, in which non-Hispanic whites have already become an ethnic minority group (Kasinitz et al. 2008) and colour lines are increasingly 'blurred' (Alba 2009).

The comparative European study however also triggers questions about the US centeredness of the American theoretical frameworks. Are differences in outcomes for the various ethnic groups in the US not partly a reflection of American institutional arrangements in school and labour markets? The New York second generation study, for instance, can be read as an example of how different ethnic groups are able to deal with the school system in place (Kasinitz et al. 2008). If a group lives in a poor neighbourhood with low quality public schools (Portes et al. 2009, p. 1081; Suárez-Orozco et al. 2008, pp. 88-145), their children will have little chances to enter (prestigious) colleges. Extreme differences in quality of schools are typical features of American institutional arrangements in education (Crul and Holdaway 2009). Although some lower class ethnic minority groups may find better ways to overcome the inequality of chances in American schools than others, the results in the US, above all, reflect the American way of integrating children into educational institutions. These observations should caution us to transfer American assimilation theory to other national contexts. Even if in other countries we find similar segmented outcomes, the mechanisms and institutional settings behind them will most probably be very different than those described by segmented assimilation theory.

We found out through the TIES project that across Europe, the different contextual frameworks have (very) different consequences. In some national contexts there is a rapidly growing upcoming elite of immigrant descent in the cities, while in other contexts the

1
2
3 second generation is mainly settling among skilled workers (Crul and Schneider 2009).

4
5 This will obviously have important consequences for how the ethnic communities will de-
6
7
8
9 velop and how integration or assimilation processes will develop in the future.

10
11 The challenge for European researchers is to comparatively explain different inte-
12
13
14
15
16
17
18
19
20
21
22
23
24
25
26
27
28
29
30
31
32
33
34
35
36
37
38
39
40
41
42
43
44
45
46
47
48
49
50
51
52
53
54
55
56
57
58
59
60
61
62
63
64
65
66
67
68
69
70
71
72
73
74
75
76
77
78
79
80
81
82
83
84
85
86
87
88
89
90
91
92
93
94
95
96
97
98
99
100
101
102
103
104
105
106
107
108
109
110
111
112
113
114
115
116
117
118
119
120
121
122
123
124
125
126
127
128
129
130
131
132
133
134
135
136
137
138
139
140
141
142
143
144
145
146
147
148
149
150
151
152
153
154
155
156
157
158
159
160
161
162
163
164
165
166
167
168
169
170
171
172
173
174
175
176
177
178
179
180
181
182
183
184
185
186
187
188
189
190
191
192
193
194
195
196
197
198
199
200
201
202
203
204
205
206
207
208
209
210
211
212
213
214
215
216
217
218
219
220
221
222
223
224
225
226
227
228
229
230
231
232
233
234
235
236
237
238
239
240
241
242
243
244
245
246
247
248
249
250
251
252
253
254
255
256
257
258
259
260
261
262
263
264
265
266
267
268
269
270
271
272
273
274
275
276
277
278
279
280
281
282
283
284
285
286
287
288
289
290
291
292
293
294
295
296
297
298
299
300
301
302
303
304
305
306
307
308
309
310
311
312
313
314
315
316
317
318
319
320
321
322
323
324
325
326
327
328
329
330
331
332
333
334
335
336
337
338
339
340
341
342
343
344
345
346
347
348
349
350
351
352
353
354
355
356
357
358
359
360
361
362
363
364
365
366
367
368
369
370
371
372
373
374
375
376
377
378
379
380
381
382
383
384
385
386
387
388
389
390
391
392
393
394
395
396
397
398
399
400
401
402
403
404
405
406
407
408
409
410
411
412
413
414
415
416
417
418
419
420
421
422
423
424
425
426
427
428
429
430
431
432
433
434
435
436
437
438
439
440
441
442
443
444
445
446
447
448
449
450
451
452
453
454
455
456
457
458
459
460
461
462
463
464
465
466
467
468
469
470
471
472
473
474
475
476
477
478
479
480
481
482
483
484
485
486
487
488
489
490
491
492
493
494
495
496
497
498
499
500
501
502
503
504
505
506
507
508
509
510
511
512
513
514
515
516
517
518
519
520
521
522
523
524
525
526
527
528
529
530
531
532
533
534
535
536
537
538
539
540
541
542
543
544
545
546
547
548
549
550
551
552
553
554
555
556
557
558
559
560
561
562
563
564
565
566
567
568
569
570
571
572
573
574
575
576
577
578
579
580
581
582
583
584
585
586
587
588
589
590
591
592
593
594
595
596
597
598
599
600
601
602
603
604
605
606
607
608
609
610
611
612
613
614
615
616
617
618
619
620
621
622
623
624
625
626
627
628
629
630
631
632
633
634
635
636
637
638
639
640
641
642
643
644
645
646
647
648
649
650
651
652
653
654
655
656
657
658
659
660
661
662
663
664
665
666
667
668
669
670
671
672
673
674
675
676
677
678
679
680
681
682
683
684
685
686
687
688
689
690
691
692
693
694
695
696
697
698
699
700
701
702
703
704
705
706
707
708
709
710
711
712
713
714
715
716
717
718
719
720
721
722
723
724
725
726
727
728
729
730
731
732
733
734
735
736
737
738
739
740
741
742
743
744
745
746
747
748
749
750
751
752
753
754
755
756
757
758
759
760
761
762
763
764
765
766
767
768
769
770
771
772
773
774
775
776
777
778
779
780
781
782
783
784
785
786
787
788
789
790
791
792
793
794
795
796
797
798
799
800
801
802
803
804
805
806
807
808
809
810
811
812
813
814
815
816
817
818
819
820
821
822
823
824
825
826
827
828
829
830
831
832
833
834
835
836
837
838
839
840
841
842
843
844
845
846
847
848
849
850
851
852
853
854
855
856
857
858
859
860
861
862
863
864
865
866
867
868
869
870
871
872
873
874
875
876
877
878
879
880
881
882
883
884
885
886
887
888
889
890
891
892
893
894
895
896
897
898
899
900
901
902
903
904
905
906
907
908
909
910
911
912
913
914
915
916
917
918
919
920
921
922
923
924
925
926
927
928
929
930
931
932
933
934
935
936
937
938
939
940
941
942
943
944
945
946
947
948
949
950
951
952
953
954
955
956
957
958
959
960
961
962
963
964
965
966
967
968
969
970
971
972
973
974
975
976
977
978
979
980
981
982
983
984
985
986
987
988
989
990
991
992
993
994
995
996
997
998
999
1000

A similar argument can be made for the influence of the national discourses on ideals of assimilation or integration. They play an important role in who is considered integrated or assimilated in both the public and the academic debate. The implicitly formulated 'ideals of integration or assimilation' differ greatly across countries. We should be aware that in the US-debate the notion of 'assimilation', i.e. becoming similar to the 'mainstream population', is built upon the necessity of a country formed by immigrant groups of many different origins to create common denominators and identifiers. In the Scandinavian countries, by contrast, it is especially the tradition of the strong welfare state and the ideal of overcoming inequalities, which formulates the main end goals of integration. In France, the republican model with its radical egalitarian view of citizenship, poses yet again another normative integration goal. A good example of how this works in practice is religion: Strong particularistic ethnic and religious institutions are mostly considered an important stepping-stone for assimilation in the US. The most contrasting case in Europe is certainly France, where religion is mostly looked upon with great scepticism (Foner and Alba 2009). This obviously also has implications for the ways in which immigrant and second generation religiosity is judged in the two settings.

Especially in the field of identities and social relationships, normative ideas of preferred integration outcomes seem to most easily slip into academic integration models. Implicit normative connotations of terms and concepts frequently prevent posing the right

1
2
3 scientific questions and developing analytical models, which address integration dynamics
4
5 in order to *understand* and not to judge them -- or in other words, the ‘concern with policy
6
7 problems (should not) impair the search for intellectual problems’ (Banton 2008, p. 7).
8
9
10 Cross-country and transatlantic comparisons may greatly help to raise awareness for the
11
12 specific limits of every national debate between prescriptive and descriptive, normative
13
14 and analytical.
15
16
17
18
19
20
21

22 **References**

- 23
24 ALBA, RICHARD 2005 Bright vs. blurred boundaries: Second-generation assimilation
25 and exclusion in France, Germany, and the United States, *Ethnic and Racial Studies*, Vol-
26 ume 28, Number 1, January 2005, pp. 20-49
27
28
29
30
31 ALBA, RICHARD 2009 *Blurring the Color Line: The New Chance for a More Integrated*
32 America. Cambridge, MA: Harvard University Press
33
34
35
36 ALBA, RICHARD and NEE, VICTOR 2003 *Remaking the American Mainstream: As-*
37 *similation and Contemporary Immigration*. Cambridge, MA: Harvard University Press.
38
39
40
41 BANTON, MICHAEL 2008 *Methodological Nationalism?* Manuscript for the lecture at
42 the Cross-cluster Workshop ‘Methodological Nationalism’, 5th Annual IMISCOE Confer-
43 ence in Bilbao, 9-12 September 2008.
44
45
46
47
48 BARTH, FREDRIK 1969 ‘Introduction’, in: Fredrik Barth (ed.), *Ethnic Groups and*
49 *Boundaries. The social organization of culture difference*, Oslo: Universitetsforlaget, pp.
50 7-38
51
52
53
54
55 BOMMES, MICHAEL 2005 Transnationalism or assimilation? *Journal of Social Science*
56 *Education* (www.sowi-onlinejournal.de), No. 1 “Migration”.
57
58
59
60

- 1
2
3 BOURDIEU, PIERRE 1977 *Outline of a theory of Practice*. Cambridge: Cambridge Uni-
4
5
6 versity Press.
7
8 BOURDIEU, PIERRE 1984 *Distinction. A social critique of the judgement of taste*. Lon-
9
10 don: Routledge
11
12 CRUL, MAURICE and HEERING, LIESBETH 2008 *The Position of the Turkish and Mo-*
13
14 *roccan Second Generation in Amsterdam and Rotterdam. The TIES Study in the Nether-*
15
16 *lands*, Amsterdam: IMISCOE/Amsterdam University Press.
17
18 CRUL, MAURICE and HOLDAWAY, JENNIFER 2009 Children of Immigrants in
19
20 School in New York and Amsterdam: The Factors Shaping Attainment. In: M. Crul, J.
21
22 Holdaway and C. Roberts (ed.) *Pathways to Mobility and Citizenship*. Special Issue
23
24 *Teachers College Record*, Volume 111 Number 6, 2009
25
26
27
28 CRUL, MAURICE, PAZSTOR, ADEL and LELIE, FRANS 2008 *De tweede generatie.*
29
30 *Uitdagingen en kansen voor de stad*. The Hague: Nicis Institute
31
32
33 CRUL, MAURICE and SCHNEIDER, JENS 2009 *The Second Generation in Europe.*
34
35 *Education and the Transition to the Labour Market*. London: OSI
36
37
38 COHEN, ANTHONY P. 1994 *Self Consciousness. An Alternative Anthropology of Iden-*
39
40 *tity*. London, New York: Routledge
41
42
43 DEVEREUX, GEORGE 1978 *Ethnopschoanalysis, Psychoanalysis and Anthropology as*
44
45 *Complementary Frames of Reference*, Berkeley: University of California Press.
46
47
48 FONER, NANCY and ALBA, RICHARD 2008 Immigrant Religion in the U.S. and West-
49
50 ern Europe: Bridge or Barrier to Illusion? *International Migration Review*, 42 (2), pp. 360-
51
52 392
53
54
55 GIBSON, MARGARET A. 1989 *Accommodation Without Assimilation: Sikh Immigrants*
56
57 *in an American High School*. Ithaca, NY: Cornell University Press.
58
59
60

1
2
3 GLICK-SCHILLER, NINA and ANDREAS WIMMER 2002 Methodological Nationalism
4 and beyond: Nation-state building, migration and the social sciences. *Global Networks*
5
6 2(4), pp. 301-34.
7
8

9
10 GRANOVETTER, MARK S. 1973 The Strength of Weak Ties, *American Journal of Soci-*
11
12 *ology*, Volume 78(6), pp. 1360-80.
13

14
15 HECKMANN, FRIEDRICH, LEDERER, HARALD and WORBS, SUSANNE 2001 *Ef-*
16
17 *fectiveness of National Integration Strategies towards Second Generation Migrant Youth*
18
19 *in a Comparative European Perspective. Final Report to the European Commission.* Bam-
20
21 berg: efms.
22
23

24
25 KASINITZ, PHILIP, MOLLENKOPF, JOHN, WATERS, MARY and HOLDAWAY,
26
27 JENNIFER 2008 *Inheriting the City. The Children of Immigrants come of Age* Russell
28
29 Sage Foundation Books at Harvard University Press
30

31
32 LATOUR, BRUNO 1999 *Pandora's Hope. Essays on the Reality of Science Studies*, Cam-
33
34 bridge: Harvard University Press
35

36
37 WATERS, MARY and LEVITT, PEGGY 2002 *The changing face of Home. The transna-*
38
39 *tional lives of the second generation.* New York: Russell Sage.
40

41
42 LUHMANN, NIKLAS 1989: *Gesellschaftsstruktur und Semantik: Studien zur*
43
44 *Wissenssoziologie der modernen Gesellschaft 3*, Frankfurt: Suhrkamp
45

46
47 PORTES, ALEJANDRO, FERNANDEZ-KELLY, PATRICIA and HALLER, WILLIAM
48
49 2009, The Adaptation of the Immigrant Second Generation in America: A Theoretical
50
51 Overview and Recent Evidence. *Journal of Ethnic and Migration Studies*, Vol. 35, No. 7,
52
53 pp. 1077-1104
54

55
56 PORTES, ALEJANDRO and RUMBAUT, RUBEN 1996 *Immigrant America: A Portrait.*
57
58 Berkeley: University of California Press.
59
60

1
2
3 PORTES, ALEJANDRO and RUMBAUT, RUBEN 2001 *Legacies. The Story of the Im-*
4 *migrant Second Generation*. Berkeley: University of California Press.
5
6

7
8 PORTES, ALEJANDRO and ZHOU, MIN 1993 'The New Second Generation: Seg-
9 *mented Assimilation and its Variants'* *The Annals* vol. 530, no. 1, pp. 74-96.
10
11

12
13 REITZ, JEFFREY (1998), *Warmth of the welcome. The social cause of economic success*
14 *for immigrants in different nations and cities*. Boulder: Westview press
15
16

17
18 RUMBAUT, RUBEN 2005 Turning points in the transition to adulthood: Determinants of
19 *educational attainment, incarceration, and early childbearing among children of immi-*
20 *grants.* *Ethnic and Racial Studies* Vol. 28, No. 6, pp. 1041-1086
21
22
23

24
25 SCHINKEL, WILLEM 2007 *Denken in een tijd van sociale hypochondrie: Aanzet tot een*
26 *theorie voorbij de maatschappij*. Kampen: Klement
27
28

29
30 SCHNEIDER, JENS 2007 Boundaries of Self and Others: National Identity in Brazil and
31 *Germany,* *Lateinamerika Analysen* 16(1), pp. 3-24, Hamburg: GiGA.
32
33

34
35 SUAREZ-OROZCO, CAROLA, SUAREZ-OROZCO, MARCELO and TODOROVA,
36 IRINA 2008, *Learning a New Land. Immigrant Students in American Society*. Cambridge:
37 Harvard University Press
38
39

40
41 VERMEULEN, HANS 1997 *Immigrant Policy fir a Multicultural Society. A Comparative*
42 *Study of Integration, Language and Religious Policy in Five Western European Countries*.
43 *Amsterdam: Institute of Migration and Ethnic Studies (IMES).*
44
45
46

47
48 VERMEULEN, FLORIS and STOTIJN, ROSANNE 2009 Local Policies Concerning Un-
49 *employment among Immigrant Youth in Amsterdam and in Berlin: Towards Strategic Re-*
50 *placement and Pragmatic Accommodation,* in M. Bockert and T. Caponio (eds.) *The Local*
51 *Dimension of Migration Policies,* Amsterdam: IMISCOE/Amsterdam University Press
52
53
54
55
56
57
58 (forthcoming).
59
60

1
2
3 VERTOVEC, STEVE 2006 *The Emergence of Super-Diversity in Britain*, Working Paper
4
5 No. 25, Centre on Migration, Policy and Society, University of Oxford
6

7
8 WALDINGER, ROGER 2001 *Strangers at the gate. New immigrants in urban America*.
9
10 California: University of California Press
11

12
13 ZHOU, MIN 2005 'Ethnicity as social capital: community-based institutions and embed-
14
15 ded networks of social relations', in Loury, G.C., Modood, T. and Teles, S.M. (eds) Eth-
16
17 nicity, Social Mobility and Public Policy: Comparing the US and UK. Cambridge: Cam-
18
19 bridge University Press, PP: 131-59.
20
21

22
23
24 Maurice Crul is Senior Researcher at the University of Amsterdam.
25
26 Address: Oudezijds Achterburgwal 237, 1012 DL Amsterdam, The Netherlands
27
28 Mail: M.R.J.Crul@uva.nl

29
30 Jens Schneider is Senior Researcher at the University of Amsterdam
31
32 Address: Dohrnweg 5, 22767 Hamburg, Germany
33
34 Mail: sfager@gmx.de

35
36
37 ¹ An early version of this article was presented on an IMISCOE Cluster C8-workshop in Neuchâtel in No-
38
39 vember 2007. We would like to acknowledge the valuable comments we received on that occasion, including
40
41 those of anonymous reviewers. We also extend our gratitude to the particular suggestions received from
42
43 Frans Lelie, Sangeeta Fager, Nancy Foner, Richard Alba and Hans Vermeulen. Maurice Crul wants to thank
44
45 the Russell Sage Foundation for their support during his fellowship year in which period this article was
46
47 completed.

48
49 ² TIES investigates the second generation of Turkish, Moroccan and former Yugoslavia descent in fifteen
50
51 cities in eight European countries (www.TIESproject.eu for more details). It has a special focus on the educa-
52
53 tional, professional and housing careers of the respondents, and it allows both for reconstruction of individual
54
55 life trajectories, and relation of them to background and contextual factors (see Crul and Heering 2008).

56
57 ³ See for instance the CILS and ISGMNY studies.

58
59 ⁴ Another problem with the rather static notion of in- and outsiders is that it presupposes that 'the people',
60
'the nation' and 'the state' would all fall within the same boundaries. It neglects, as theorists of trans-

1
2
3
4
5
6 nationalism have pointed out, the relationships and constant movements of individuals across the nation-state
7 borders (Waters and Levitt 2002).
8

9
10 ⁵ The TIES survey was carried out by survey bureaus under supervision of the eight TIES partner research
11 institutes: the Institute for Social and Political Opinion Research [ISPO], University of Leuven in Belgium;
12 the National Institute for Demographic Studies [INED] in France; the Swiss Forum for Migration and Popu-
13 lation Studies [SFM], University of Neuchâtel in Switzerland; the Centre for Research in international migra-
14 tion and ethnic relations [CEIFO], University of Stockholm in Sweden; the Institute for Migration Research
15 and Intercultural Studies [IMIS] University of Osnabruck, in Germany and the Institute for European Integra-
16 tion Research [EIF], Austrian Academy of Sciences in Austria; The National Interdisciplinary Demographic
17 Institute [NIDI] in The Hague and the Institute for Migration and Ethnic Studies [IMES] in Amsterdam, the
18 Netherlands.
19
20
21
22
23
24
25
26

27 ⁶ This index combines four items in the TIES questionnaire addressing the attachment to the neighbourhood,
28 feeling comfortable in it, feeling a responsibility for its life quality, and having good contacts with the
29 neighbours. In the other cities only two of these items were asked, but the results are in line with this picture.
30
31
32

33 ⁷ Practically all the comparative research on various immigrant groups in one national or local context takes
34 the 'group hypothesis' more or less for granted. On the one side, this is difficult to avoid, because especially
35 quantitative work has to create analytical units in order to make comparisons. On the other side, we should be
36 aware that these units, in any case, are analytical artefacts, whose relation to reality has to be well considered.
37
38
39
40

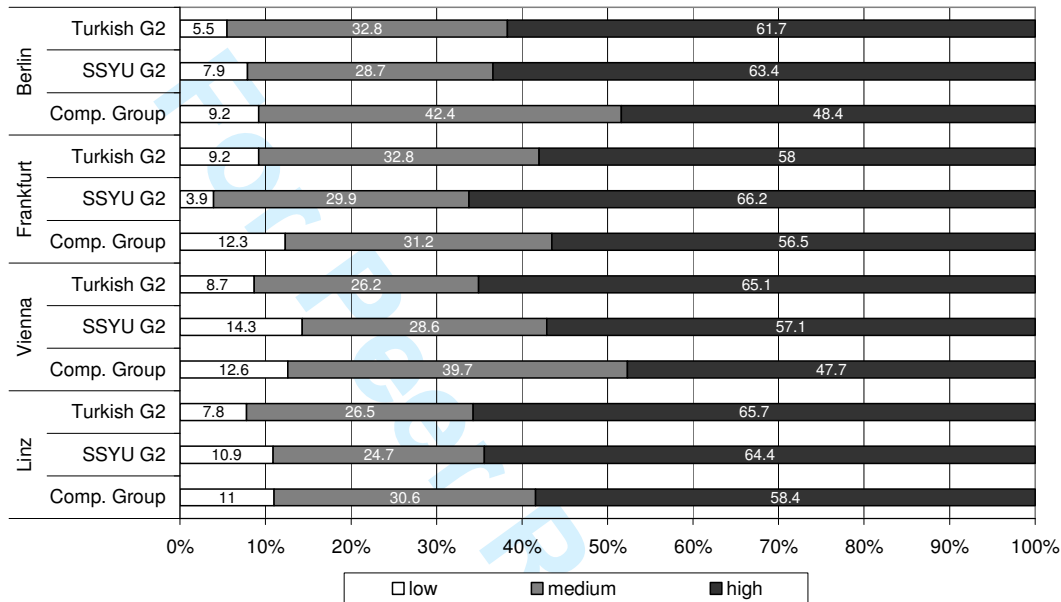
41 ⁸ It suffices to look at the annually registered moves to and away from a city at hand -- accessible through the
42 population registers in many municipalities. Obviously the phenomenon has a similar magnitude in the US
43 and is constantly changing their 'ethnic landscape' in a similar way.
44
45
46

47 ⁹ Fathers with a primary school diploma at most make up about half of the total Turkish sample. The TIES
48 study compares two cities per country; it is thus no national survey. Yet, with regard to education the out-
49 comes did not significantly differ across the two cities in each country (except for France).
50
51
52
53
54
55
56
57
58
59
60

Figures for Crul & Schneider: “Comparative Integration Context Theory: Participation and Belonging in New Diverse European Cities”
ERS Special Issue “Theorizing Assimilation and Integration”

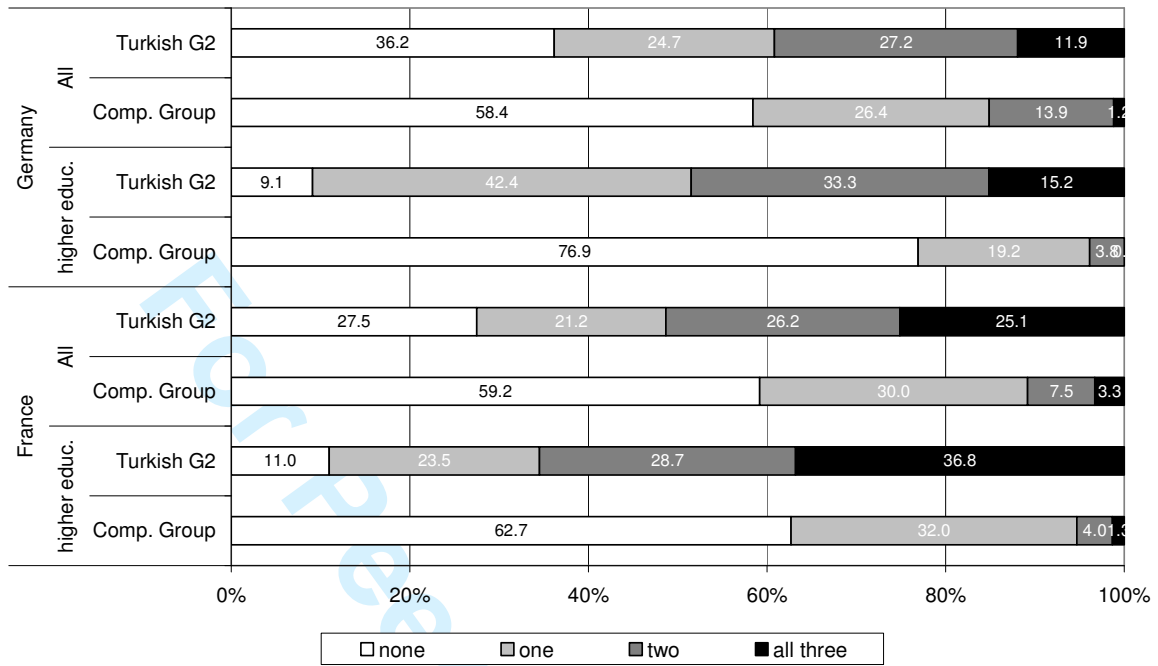
p. 3:

Figure 1. Degree of involvement with one's neighbourhood (4-item index)



Source: TIES 2007, 2008

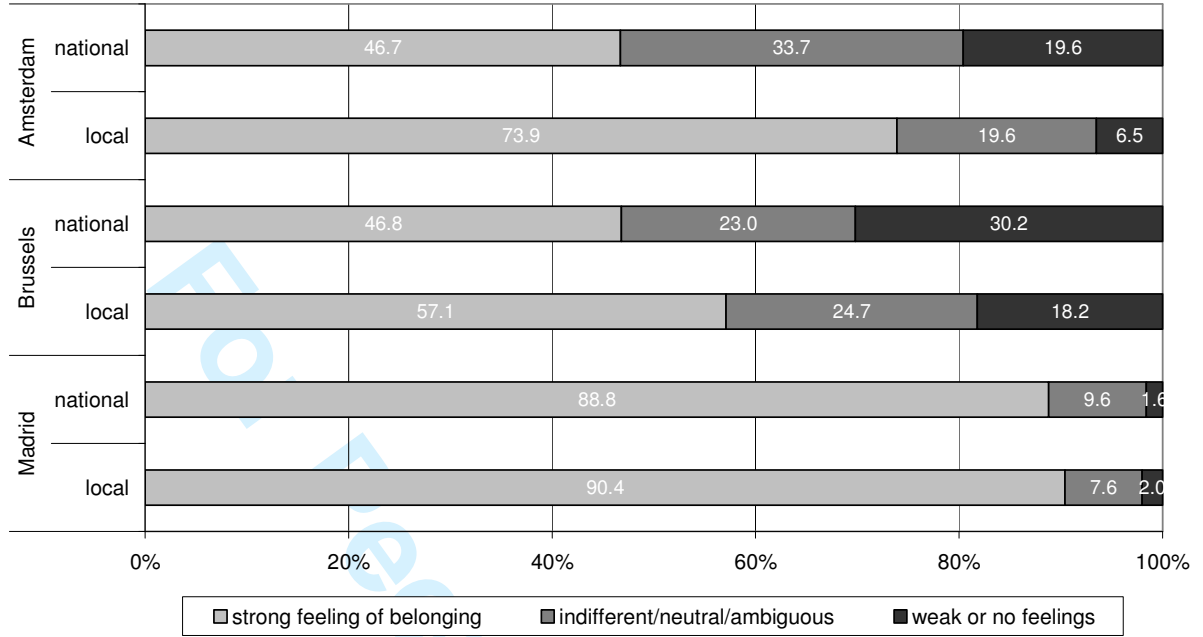
Figure 2. The three best friends: How many are of a different ethnic background?



Source: TIES 2007, 2008

1
2
3
4
5
6
7
8
9
10
11
12
13
14
15
16
17
18
19
20
21
22
23
24
25
26
27
28
29
30
31
32
33
34
35
36
37
38
39
40
41
42
43
44
45
46
47
48
49
50
51
52
53
54
55
56
57
58
59
60

Figure 3. Moroccan G2: Local belonging vs. National belonging



Source: TIES 2007, 2008

Tables:

Table 1. Who should take care of the children, if you have a family?

	Mostly the mother	Mostly the father	Both equally	Mostly some family members together
Moroccan G2	9,8%	0%	85,2%	4,9%
Comparison Group	9,3%	0%	86,6%	4,1%

Source: TIES 2007,2008

For Peer Review Only

Table 2. Second generation Turks with a father with maximum primary education: Highest diploma of those who left school and the present level of schooling of those still in school

	Lower Secondary at most	Upper Secondary	College and University
Austria	35,9%	49,6%	14,5%
Belgium	24,0%	50,2%	24,8%
France	15,8%	44,6%	39,6%
Germany	34,7%	62,3%	3,0%
Netherlands	32,1%	42,3%	25,6%
Sweden	7,9%	55,0%	37,1%
Switzerland	19,8%	67,0%	13,2%

Source: TIES 2007,2008

For Peer Review Only

Table 3: Comparison Group: feelings towards people of Moroccan descent (in temperature from 0 to 100 degrees Celsius)

	Amsterdam	Brussels	Madrid
0-25 degrees	14.0%	8.6%	2.8%
26-50 degrees	50.4%	34.0%	24.7%
51-75 degrees	26.0%	29.9%	37.7%
76-100 degrees	9.6%	27.5%	34.8%
N	250	244	247

Source: TIES survey 2007, 2008

For Peer Review Only