



HAL
open science

Field induced superconducting phase in Superconductor-Normal metal and Superconductor-Superconductor bilayer

Xavier Montiel, Alexandre I. Buzdin

► **To cite this version:**

Xavier Montiel, Alexandre I. Buzdin. Field induced superconducting phase in Superconductor-Normal metal and Superconductor-Superconductor bilayer. 2011. hal-00598538v1

HAL Id: hal-00598538

<https://hal.science/hal-00598538v1>

Preprint submitted on 6 Jun 2011 (v1), last revised 9 Jun 2011 (v2)

HAL is a multi-disciplinary open access archive for the deposit and dissemination of scientific research documents, whether they are published or not. The documents may come from teaching and research institutions in France or abroad, or from public or private research centers.

L'archive ouverte pluridisciplinaire **HAL**, est destinée au dépôt et à la diffusion de documents scientifiques de niveau recherche, publiés ou non, émanant des établissements d'enseignement et de recherche français ou étrangers, des laboratoires publics ou privés.

Field induced superconducting phase in Superconductor-Normal metal and Superconductor-Superconductor bilayer

X. MONTIEL and A. I. BUZDIN*

Condensed Matter Theory Group, LOMA, UMR 5798,

Université Bordeaux 1, 33405 Talence France

(Date textdate)

Abstract

We study the proximity effect in a superconductor (S)-normal metal (N) bilayer under in-plane magnetic field. A compensation between the Zeeman effect and the energy splitting between bonding and anti-bonding levels leads to a magnetic field induced superconducting phase in the (H, T) phase diagram of the S-N bilayer well above the standard paramagnetic limit. We demonstrate that the presence of the non-magnetic impurities shrink the region of field induced superconductivity existence in S-N and S-S bilayers.

I. INTRODUCTION

Quasi two dimensional superconductors have been studied for fifty years. A strong upper critical magnetic field (H_{c2}) anisotropy was observed for the first time in intercalated layered crystal of dichalcogenides of transition metals¹. In these compounds, H_{c2} is higher for the in-plane orientation (ab plane) than in the perpendicular one (c-axis). Moreover, this H_{c2} anisotropy was observed in intercalated graphite superconductors (in $C_8K^{2,3}$, in $C_6Ca^{4,5}$ and in C_6Yb^5), in high superconducting critical temperature (High T_c) cuprates superconductors (in $YBa_2Cu_3O_7^{6,7,8}$ and in $Bi_2Sr_2CaCu_2O_8^9$) and also in superconducting-superconducting (S-S') $YBa_2Cu_3O_7/DyBa_2Cu_3O_7$ and superconducting-insulating (S-I) $(YBa_2Cu_3O_7)_n / (PrBa_2Cu_3O_7)_m$ artificial superlattices^{10,11}. High T_c cuprates superconductors have a layered crystal structure¹² and a strong electron anisotropy^{6,12,13,14,15,16}. The superconducting coherence length along the c-axis ξ_c is smaller than the interlayer distance d . Consequently, high T_c cuprate superconductors can be considered as natural superlattices. In high T_c cuprate superconducting compounds, superconductivity exists in CuO_2 atomic planes which are sandwiched by non-superconducting atomic planes^{17,12}.

Ginzburg-Landau model (in the weak anisotropy limit ($\xi_c \lesssim d$))¹⁸ and Lawrence-Doniach model (in the strong anisotropy limit ($\xi_c \ll d$))¹⁹ give the description of the H_{c2} anisotropic properties in layered superconductors near T_c . This H_{c2} anisotropy in superconducting multilayers can also be described microscopically by the standard Bardeen-Cooper-Schrieffer (BCS) and the tunneling Hamiltonian theory. Using this method, we obtain the (H_{c2}, T) phase diagram of layered superconducting systems.

Some of high T_c cuprate superconductors can be considered as a stack of S-N, S-S'²⁰ or S-F²¹ weakly coupled bilayers. The S-N, S-S' or S-F bilayer constitute the elemental unit cell of the multilayer. The properties of the S-N, S-S' or S-F bilayers qualitatively differs from a single S, N or F layers. Consequently, the properties of multilayers based on single layer elemental unit cell may be qualitatively different of the properties of multilayers based on bilayer elemental unit cell. We show in this paper that (H, T) phase diagram, with in plane magnetic field, of S-N and S-S' bilayers may reveal a magnetic field induced superconducting phase.

The case of S-F multilayers has been studied in^{21,22,23,24}. In S-S bilayer, Buzdin *et al* have demonstrated^{25,20} the possibility to overcome the paramagnetic limit at low temperature for

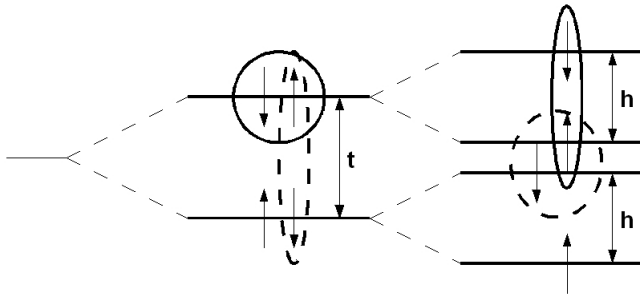


FIG. 1: Mechanism of compensation of the Zeeman effect by the degeneracy between the bonding and anti-bonding state.

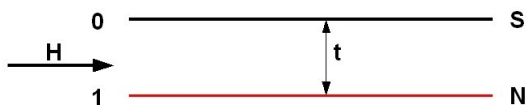


FIG. 2: A superconducting (S)-Normal metal (N) bilayer submitted at an in-plane magnetic field H .

a high in-plane critical magnetic field. The field induced superconducting phase may appear at high magnetic field if the interlayer coupling energy t is higher than T_c . Moreover, in this phase, the adjacent S layers have opposite signs of the order parameter (this is called π -state²¹). In this case, the Zeeman effect is compensated by the bonding-antibonding degeneracy lift produced by the hybridization between the two S layers (see figure 1). The Cooper pairs in the π state are more stable at high magnetic field than the 0-state. The 0-state occurs when the adjacent S layers support the same signs of the order parameter. In this paper, we show that in a S-N bilayer at high in-plane magnetic field H (see figure 2), at low temperature and strong enough coupling $t > T_{c0}$ between the two planes, the paramagnetic limit is also enhanced above the usual Fulde-Ferrell-Larkin-Ovchinnikov (FFLO)^{26, 27} limit and a field induced superconducting phase may appear at high magnetic field. The corresponding mechanism is qualitatively the same as in the S-S bilayer but naturally there is no π state realization in this case. We study also the influence of the impurity scattering on the (H, T) phase diagram of S-N and S-S bilayers.

The outline of the paper is as following. In Sec. II, we present the model of a multilayer system and give the exact solutions of the Eilenberger equations. In Sec. III, we study the

influence of the transfer integral on the superconducting critical temperature and the effect of impurities. In section IV, we investigate the phase diagram of the S/N bilayer in the strong exchange field regime in both the clean and the dirty limits. In section V, we study the influence of impurities of the S-S bilayer (H, T_c) phase diagram.

II. MODEL OF AN ATOMIC THICKNESS S/N BILAYER

A. Gorkov formalism

We start with a non-interacting model (see for example^{28, 21}) of layered systems with alternating superconducting and normal metal layers. The electron motion is described in the N and S layers by the spin-dependent energy spectra $\xi_{n,\sigma}(\mathbf{k})$ and $\xi_{s,\sigma}(\mathbf{k})$ respectively. The parameters that characterize the systems are the transfer energy between the N and S layers t , the Cooper pairing constant λ which is assumed to be nonzero in S layers only. The Zeeman energy splitting, due to in plane magnetic field H , is written as $h = \mu_B H$ where μ_B is the Bohr magneton.

The two mechanisms destroying superconductivity under a magnetic field are the orbital and the paramagnetic effect^{29, 30}. Usually it is the orbital effect that is more restrictive. However, in systems with a large effective mass of electrons^{31, 32} or in low-dimensional compounds, like quasi-one dimensional or layered superconductors under in-plane magnetic field³³, the orbital magnetism is weakened and it is the paramagnetic effect that is responsible for superconductivity destruction.

The Chandrasekhar-Clogston paramagnetic limit^{34, 35} is achieved when the polarization energy of the normal electron gas, $\chi_n H^2/2$, equals the superconducting condensation energy $N(0) \Delta_0^2/2$, where $N(0)$ is the density of state of the normal electron gas, χ_n is its spin susceptibility, and $\Delta_0 = 1.76T_c$ is the zero temperature superconducting gap. This criterion gives the exchange field $h_p(T=0) = \Delta_0/\sqrt{2}$ where the superconductor should undergo a first-order transition to the normal state. Larkin and Ovchinnikov²⁶ and Fulde and Ferrell²⁷ (FFLO) predicted the existence of a non-uniform superconducting state with slightly higher critical field $h_{FFLO}^{3D}(T=0) = 0.755\Delta_0 > h_p(T=0)$. For quasi-2D superconductors the critical field of the FFLO state is even higher, namely $h_{FFLO}^{2D}(T=0) = \Delta_0$,³⁶ while in quasi one dimensional systems there is no paramagnetic limit at all³⁷. We focus on the 2D case

for which a generic temperature magnetic field phase diagram has been established³⁶.

We consider the case when the coupling between the layers is realized via the transfer energy t . In the whole paper, we assume $t \ll E_F$ where E_F is the Fermi energy and then Cooper pairs are localized within each plane. The layers are coupled together by the coupling Hamiltonian

$$\hat{H}_t = t \sum_{j,\sigma,\mathbf{k}} [\psi_{j+1,\sigma}^+(\mathbf{k}) \psi_{j,\sigma}(\mathbf{k}) + \psi_{j,\sigma}^+(\mathbf{k}) \psi_{j+1,\sigma}(\mathbf{k}) + H.c.] . \quad (1)$$

where $\psi_{j,\sigma}^+(\mathbf{k})$ (resp. $\psi_{j,\sigma}(\mathbf{k})$) is the creation (resp. annihilation) operator of an electron with spin σ and momentum \mathbf{k} in the j th layer. In this paper, we study the S-N and S-S bilayers. In S-N system, the superconducting layer has the index $j = 0$ and the normal metal $j = 1$. In the S-S bilayer, the superconducting layers are indexed $j = 0$ and $j = 1$. The Hamiltonian of the system can be written as :

$$\hat{H} = \hat{H}_0 + \hat{H}_{BCS} + \hat{H}_t, \quad (2)$$

where H_0 is the Kinetic and Zeeman Hamiltonian , H_t the tunneling Hamiltonian and H_{BCS} the BCS Hamiltonian. For the j th layer, the kinetic and Zeeman parts of the Hamiltonian are written as

$$\hat{H}_0 = \sum_{\sigma,\mathbf{k}} [\xi_{j,\sigma}(\mathbf{k}, h_j) \psi_{j,\sigma}^+(\mathbf{k}) \psi_{j,\sigma}(\mathbf{k})] , \quad (3)$$

The Zeeman effect manifests itself in breaking the spin degeneracy of the electronic energy levels according to

$$\xi_{j,\sigma}(\mathbf{k}, h_j) = \xi_j(\mathbf{k}) - \sigma h_j \quad (4)$$

where $\xi_j(\mathbf{k}) = \mathbf{k}^2/2m - E_F$ i.e. for simplicity we choose the same electron spectrum in both layers.

The field h_j in the j th layer is assumed to be the same in both layers ($h_0 = h_1 = h$). We suppose an s-wave singlet superconductivity coupling which is treated in H_{BCS} within a mean field approximation³⁸

$$\hat{H}_{BCS} = \sum_{j,\mathbf{k}} [\Delta_j^*(\mathbf{q}) \psi_{j,\downarrow}^+(\mathbf{k}) \psi_{j,\uparrow}^+(-\mathbf{k}) + \Delta_j(\mathbf{q}) \psi_{j,\uparrow}(\mathbf{k}) \psi_{j,\downarrow}(-\mathbf{k})] + \frac{1}{|\lambda|} \int \mathbf{d}^2\mathbf{r} \Delta_j^2(\mathbf{r}) \quad (5)$$

where \mathbf{r} is the two-dimensional coordinate within each layer and λ the electron-electron coupling constant in the S layer only. The superconducting order parameter Δ_j is non zero

only in the S layers as the coupling constant is 0 in the N layer. In order to investigate the occurrence of modulated superconducting phase (FFLO), we choose the superconducting order parameter in the form

$$\Delta(\mathbf{r}) = \Delta e^{i\mathbf{q}\cdot\mathbf{r}}$$

where \mathbf{q} is the FFLO modulation wave vector. Using Gorkov's formalism, we introduce the normal G and anomalous \tilde{F} Green functions³⁸ :

$$\begin{aligned} G_{\sigma,\sigma'}^{j,l}(\omega, \mathbf{k}, \mathbf{k}') &= -\langle T_\tau (\psi_{\sigma,j}(\mathbf{k}) \psi_{\sigma',l}^+(\mathbf{k}')) \rangle = \delta(\mathbf{k} - \mathbf{k}' + \mathbf{q}) G_{\sigma,\sigma'}^{j,l}(\omega, \mathbf{k}), \\ \tilde{F}_{\sigma,\sigma'}^{j,l}(\omega, \mathbf{k}, \mathbf{k}') &= \langle T_\tau (\psi_{\sigma,j}^+(\mathbf{k}) \psi_{\sigma',l}^+(\mathbf{k}')) \rangle = \delta(\mathbf{k} + \mathbf{k}') \tilde{F}_{\sigma,\sigma'}^{j,l}(\omega, \mathbf{k}), \end{aligned} \quad (6)$$

where the brackets mean statistical averaging over grand-canonical distribution and T_τ the ordering operator in the Matsubara's formalism³⁸, and j and l the layer's indexes. From the equation of motion³⁸, the system of Green functions equation is

$$\begin{aligned} (i\omega - \xi_{j,\sigma}(\omega, \mathbf{k} + \mathbf{q})) G_{\sigma,\sigma'}^{j,l}(\omega, \mathbf{k} + \mathbf{q}) - t G_{\sigma,\sigma'}^{j-1,l}(\omega, \mathbf{k} + \mathbf{q}) - t G_{\sigma,\sigma'}^{j+1,l}(\omega, \mathbf{k} + \mathbf{q}) + \Delta_j^* \tilde{F}_{-\sigma,\sigma'}^{j,l}(\omega, \mathbf{k}) &= \delta_{jl} \\ (i\omega + \xi_{j,-\sigma}(\mathbf{k})) \tilde{F}_{-\sigma,\sigma'}^{j,l}(\omega, \mathbf{k}) + t \tilde{F}_{-\sigma,\sigma'}^{j-1,l}(\omega, \mathbf{k}) + t \tilde{F}_{-\sigma,\sigma'}^{j+1,l}(\omega, \mathbf{k}) + \Delta_j G_{\sigma,\sigma'}^{j,l}(\omega, \mathbf{k} + \mathbf{q}) &= 0, \end{aligned} \quad (7)$$

where $\omega = (2n + 1)\pi T$ are the fermionic Matsubara frequencies. The superconducting order parameter in the 0th layer satisfies the self-consistency equation

$$\Delta_0^* = |\lambda| T \sum_{\omega} \sum_{\mathbf{k}} \tilde{F}_{\downarrow,\uparrow}^{(0,0)}(\omega, \mathbf{k}). \quad (8)$$

In quasi 2D superconductors, the maximal modulus of the FFLO wave vector is of the order of $(\xi_0)^{-1}$, ξ_0 being the typical superconducting coherence length. Since $\xi_0 \gg \frac{1}{k_F}$ which of the order of the inter atomic distance with a good approximation we can consider $\xi_{j,\uparrow}(\mathbf{k} + \mathbf{q}) = \xi(\mathbf{k}) - \hbar + \mathbf{v}_F \cdot \mathbf{q}$ where \mathbf{v}_F is the Fermi velocity vector in the plane.

B. Eilenberger formalism

In this section, we introduce the quasi-classical Eilenberger equation for the S-S bilayer by considering the FFLO modulation phase and non-magnetic impurities. Applying Eilenberger's method³⁹ for layered system⁴⁰ with Hamiltonian (2), the system of equations of

Green functions can be written as:

$$\begin{aligned}
\left(\omega + \frac{1}{2\tau} + ih - i\mathbf{v}_F \cdot \mathbf{q}\right) \tilde{f}_{\downarrow\uparrow}^{0,0}(\omega, \mathbf{q}) - i\frac{t}{2}\tilde{f}_{\downarrow\uparrow}^{1,0}(\omega, \mathbf{q}) + i\frac{t}{2}\tilde{f}_{\downarrow\uparrow}^{0,1}(\omega, \mathbf{q}) - \Delta_0^* - \frac{\langle \tilde{f}_{\downarrow\uparrow}^{0,0}(\omega, \mathbf{q}) \rangle_\phi}{2\tau} &= 0 \\
\left(\omega + \frac{1}{2\tau} + ih - i\mathbf{v}_F \cdot \mathbf{q}\right) \tilde{f}_{\downarrow\uparrow}^{1,0}(\omega, \mathbf{q}) - i\frac{t}{2}\tilde{f}_{\downarrow\uparrow}^{0,0}(\omega, \mathbf{q}) + i\frac{t}{2}\tilde{f}_{\downarrow\uparrow}^{1,1}(\omega, \mathbf{q}) &= 0 \\
\left(\omega + \frac{1}{2\tau} + ih - i\mathbf{v}_F \cdot \mathbf{q}\right) \tilde{f}_{\downarrow\uparrow}^{1,1}(\omega, \mathbf{q}) - i\frac{t}{2}\tilde{f}_{\downarrow\uparrow}^{0,1}(\omega, \mathbf{q}) + i\frac{t}{2}\tilde{f}_{\downarrow\uparrow}^{1,0}(\omega, \mathbf{q}) - \Delta_1^* - \frac{\langle \tilde{f}_{\downarrow\uparrow}^{1,1}(\omega, \mathbf{q}) \rangle_\phi}{2\tau} &= 0 \\
\left(\omega + \frac{1}{2\tau} + ih - i\mathbf{v}_F \cdot \mathbf{q}\right) \tilde{f}_{\downarrow\uparrow}^{0,1}(\omega, \mathbf{q}) - i\frac{t}{2}\tilde{f}_{\downarrow\uparrow}^{1,1}(\omega, \mathbf{q}) + i\frac{t}{2}\tilde{f}_{\downarrow\uparrow}^{0,0}(\omega, \mathbf{q}) &= 0
\end{aligned} \tag{9}$$

where $\tilde{f}_{\sigma,\sigma'}^{j,l}(\omega, \mathbf{q}) = \frac{1}{i\pi} \int_{-\infty}^{+\infty} d\xi \tilde{F}_{-\sigma,\sigma'}^{j,l}(\omega, \mathbf{k}, \mathbf{q})$ is the anomalous Green function in the Eilenberger formalism and τ electron mean free pass time. We write $\mathbf{v}_F \cdot \mathbf{q} = v_F \cdot q \cdot \cos(\phi)$ where ϕ is the polar angle (\mathbf{v}_F, \mathbf{q}) and $\langle \rangle_\phi$ is the average over ϕ . We assume an in-plane scattering on impurities and the absence of spin flip during the electron-impurity interaction. To consider the presence of impurities we substitute ω by $\omega + 1/2\tau$ and Δ_j^* by $\Delta_j^* + \langle \tilde{f}_{\downarrow\uparrow}^{j,j}(\omega, \mathbf{q}) \rangle_\phi / 2\tau$.

In the S-N bilayer, the superconducting gap is null in the metal layer ($\Delta_1^* + \langle \tilde{f}_{\downarrow\uparrow}^{1,1}(\omega, \mathbf{q}) \rangle_\phi / 2\tau = 0$). The averaged solution of the system (9) writes

$$\langle \tilde{f}_{\downarrow\uparrow}^{0,0}(\omega, q) \rangle_\phi = \frac{-\Delta_0^*[-\Omega_1 + \Omega_2 + 2\Omega_3]}{\left\{ \left(\frac{1}{2\tau}\right)[\Omega_1 + \Omega_2 + 2\Omega_3] - 4(\Omega_1\Omega_2\Omega_3)^{1/4} \right\}}$$

where $\Omega_1 = \sqrt{(a^2 + v^2q^2)(c^2 + v^2q^2)}$, $\Omega_2 = \sqrt{(b^2 + v^2q^2)(c^2 + v^2q^2)}$, $\Omega_3 = \sqrt{(a^2 + v^2q^2)(b^2 + v^2q^2)}$, $a = \omega + ih + (1/2\tau) + it$, $b = \omega + ih + (1/2\tau) - it$, $c = \omega + ih + (1/2\tau)$, $\langle \rangle_\phi$ is the average on the ϕ angle and the self consistency equation is written³⁰ as :

$$\ln\left(\frac{T_c}{T_{c0}}\right) = \text{Re}\left(\sum_{\omega>0}\left(\langle \tilde{f}_{\downarrow\uparrow}^{0,0}(\omega, q) \rangle_\phi - \frac{\pi}{\omega}\right)\right) \tag{10}$$

where T_c is the critical temperature of the superconducting layer in the S-N bilayer and $T_{c0} = \frac{2\gamma\omega_D}{\pi} e^{-\frac{2\pi^2}{|\lambda|mk_F}}$ the critical temperature of an isolated superconducting layer with m the electron's mass, k_F the Fermi impulsion, $\gamma = 0.577215$ is the Euler's constant and ω_D the Debye frequency.

III. CRITICAL TEMPERATURE OF THE S-N BILAYER

In this section, we study first the influence of the proximity effect on the superconducting critical temperature T_c of the S layer when no magnetic field is applied. Then, $h = q = 0$

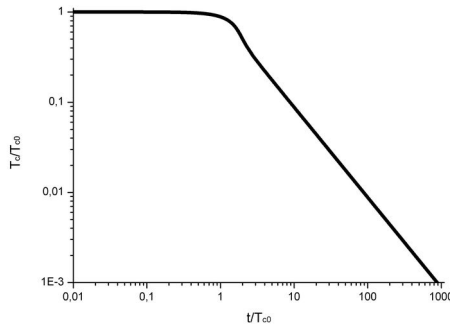


FIG. 3: Graph of T_c/T_{c0} as a function of t/T_{c0} (solid line). For $t \gg T_{c0}$, the critical temperature of the superconductor decreases to zero.

and eq. (??) becomes :

$$\tilde{f}_{\downarrow\uparrow}^{0,0}(\omega) = \frac{\Delta^* (t^2 + 2(\omega + \frac{1}{2\tau})^2)}{(2\omega + \frac{1}{2\tau})t^2 + 2\omega(\omega + \frac{1}{2\tau})^2}. \quad (11)$$

in accordance with the model developed in²⁸.

A. Clean Limit

First we consider the clean limit when $\tau \rightarrow \infty$. Hence

$$\tilde{f}_{\downarrow\uparrow}^{0,0}(\omega) = \frac{\Delta^* (t^2 + 2\omega^2)}{2\omega(t^2 + \omega^2)}, \quad (12)$$

and the self-consistency equation is :

$$\ln\left(\frac{T_c}{T_{c0}}\right) = -\frac{1}{4} \left[2\gamma + 4 \ln 2 + \Psi\left(\frac{1}{2} - \frac{it}{2\pi T_c}\right) + \Psi\left(\frac{1}{2} + \frac{it}{2\pi T_c}\right) \right].$$

where $\Psi(x)$ is the digamma function. As seen in fig 3, the superconducting critical temperature decreases with the increase of the proximity effect. At low transfer energy $t \ll T_c$, the superconducting critical temperature varies like :

$$\frac{T_c}{T_{c0}} = 1 - \frac{7}{8} \frac{\zeta(3)}{\pi} \left(\frac{t}{T_{c0}}\right)^2. \quad (13)$$

In the case of low interlayer coupling, the superconducting critical temperature reveals a quadratic decrease with the transfer energy. The superconducting state is not qualitatively influenced by the normal metal layer and can be considered as a single superconducting

layer. At strong coupling between S and N layers at $t \gg T_c$ (but in the limit $t \ll \omega_D$), the superconducting temperature varies as

$$\frac{T_c}{T_{c0}} = \frac{\pi e^{-\gamma} T_{c0}}{2 t}. \quad (14)$$

The critical temperature decreases with the tunneling transfer as more and more Cooper pairs leak into the N layer. At strong proximity effect, superconductivity may be considered as uniform in the bilayer. The superconducting properties in the N and S layers are practically the same and the bilayer can be considered as an equivalent single S layer with $T_c \simeq e^{-\frac{1}{\tilde{\lambda}}}$ where $\tilde{\lambda}$ is an effective coupling constant and $\tilde{\lambda} < \lambda$. In the case where $t \gg \omega_D$, the S-N bilayer can be considered as a single superconducting layer S with $\tilde{\lambda} = \frac{|\lambda|}{2}$ as predicted in²⁸.

B. Effect of the impurities

In this section, we discuss the influence of the impurities on the proximity effect in the S-N bilayer. The self consistency equation in this case is written as

$$\ln \left(\frac{T_c}{T_{c0}} \right) = 2\pi T_c \sum_{\omega=0}^{\infty} \left(\frac{(t^2 + 2(\omega + \frac{1}{2\tau})^2)}{(2\omega + \frac{1}{2\tau})t^2 + 2\omega(\omega + \frac{1}{2\tau})^2} - \frac{1}{\omega} \right).$$

In the case of weak proximity effect ($t \ll T_c$), the decrease of the critical temperature is

$$\frac{T_c - T_{c0}}{T_{c0}} = \frac{\Delta T_c}{T_{c0}} = -\frac{1}{8} \frac{(t/T_{c0})^2}{(1/2\tau)^2} \left(\left(\frac{1}{2\tau T_{c0}} \right) \pi + 4\Psi \left(\frac{1}{2} \right) - 4\Psi \left(\frac{1}{2} + \frac{1}{4\tau T_{c0}\pi} \right) \right).$$

In the clean limit ($T_{c0} \gg t \gg \frac{1}{2\tau}$) the superconducting critical temperature varies as $\frac{T_c}{T_{c0}} = 1 - \left(\frac{7}{8} \frac{\zeta(3)}{\pi^2} - \frac{\pi}{96} \frac{(1/2\tau)}{T_{c0}} \right) \frac{t^2}{T_{c0}^2}$, and the impurity scattering inside the N layer decreases the proximity effect. In the dirty regime ($T_{c0} \gg \frac{1}{2\tau} \gg t$) the superconducting critical temperature varies as $\frac{T_c}{T_{c0}} = 1 - \frac{\pi}{8} \frac{(t/T_{c0})^2}{(1/2\tau)/T_{c0}}$. The presence of impurities enhanced the superconducting state and T_c decreases slower than in the clean case (see figure 4). In this case, the impurities decreases the effective transfer coupling and then the proximity effect.

However at strong interlayer coupling $t \gg T_{c0}$ and $1/2\tau \ll T_c$, the expression for the anomalous Green function (11) becomes

$$\tilde{f}_{\downarrow\uparrow}^{0,0}(\omega) = \frac{\Delta^*(t^2 + 2\omega^2)}{2\omega(t^2 + \omega^2)} \left(1 + \left(\frac{t^2(2\omega^2 - t^2)}{2\omega(t^2 + \omega^2)(t^2 + 2\omega^2)} \right) \left(\frac{1}{2\tau} \right) \right)$$

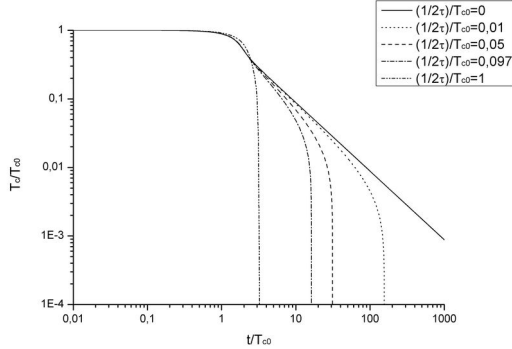


FIG. 4: Graph of T_c/T_{c0} as a function of t/T_{c0} . The clean case ($1/2\tau = 0$) is presented by the solid line. The impurity are plotted with repectively $(1/2\tau)/T_{c0} = 0.01$ (0.05, 0.097, 1 in dotted (respectively dashed, dashed-dotted and dashed-dotted-dotted) line. We see that the impurities enhance the superconducting transition temperature for weak interlayer coupling. On the other hand superconducting critical temperature decreases quickly in the presence of impurities at strong interlayer coupling.

so the self consistency equation reads

$$\frac{T_c}{T_{c0}} = \frac{\pi e^{-\gamma} T_{c0}}{2} \frac{T_{c0}}{t} \left(1 - \frac{1}{8} \frac{t}{\tau T_{c0}^2} \right).$$

This means that scattering on impurities strongly decreases T_c , i.e. $\Delta T_c = -1/\tau$, where $\Delta T_c = T_c^{imp} - T_c$ and T_c^{imp} the critical temperature in presence of impurities. In the regime $t \gg T_{c0}$, the mixing between the superconducting state in the S layer and the normal state in the N layer is very strong. The bilayer draws near the regime $\tilde{\lambda} \rightarrow \lambda/2$ where the S-N bilayer can be considered as a single S layer with an effective coupling constant $\tilde{\lambda} < \lambda$. Note that T_c depends on the impurities contrary to the Anderson theorem prediction which is not astonishing because our system is non uniform.

IV. PHASE DIAGRAM OF S-N BILAYER

We study the (h, T) and (h, t) phase diagram of the S-N bilayer in the clean case and in presence of non-magnetic impurities. In a two-dimensional S monolayer, we can define three critical magnetic fields at zero temperature. $h_0 = \Delta_0/2$ is the critical magnetic field

for a second order phase transition. $h^I = \Delta_0/\sqrt{2}$ is the critical magnetic field for a first order phase transition defined by Clogston-Chandrasekar^{34, 35}. $h^{FFLO} = \Delta_0$ is the critical magnetic field in the presence of FFLO modulations. One can see that $h^{FFLO} > h^I > h_0$. In a clean S monolayer with an applied in-plane magnetic field, the critical field is h^{FFLO} ,³⁰. In the presence of impurities, the modulated phase disappears and h^{FFLO} decreases to h^I ,^{41, 42}. When the normal phase is overcooled then the critical magnetic field decreases from h^I to h_0 ³⁰. For simplicity in the whole paper, we will focus on the second order transition critical field of the S-N bilayer, taking in mind that if the transition is of order the first order the calculated field corresponds to the overcooling field and the critical region of superconductivity phase existence may be somewhat larger.

A. Phase diagram in the clean limit

In this case, (??) becomes :

$$f^+(0,0) = \frac{\Delta^*}{2} \left[\frac{1}{(\omega + ih + i\vec{v}_F \cdot \vec{q})} + \frac{1}{2(\omega - it + ih + i\vec{v}_F \cdot \vec{q})} + \frac{1}{2(\omega + it + ih + i\vec{v}_F \cdot \vec{q})} \right] \quad (15)$$

and the self consistency equation is

$$\ln \left(\frac{T_{c0}}{T_c} \right) = 2T_c \int_0^{2\pi} \frac{d\phi}{2\pi} \operatorname{Re} \left[\gamma + 2 \ln(2) + \frac{1}{4} \Psi \left(\frac{1}{2} + \frac{i(h + v_F \cdot q \cdot \cos(\phi))}{2\pi T} \right) \right] + 2T_c \int_0^{2\pi} \frac{d\phi}{2\pi} \operatorname{Re} \left[\frac{1}{8} \Psi \left(\frac{1}{2} + \frac{i(h + t + v_F \cdot q \cdot \cos(\phi))}{\pi T} \right) + \frac{1}{8} \Psi \left(\frac{1}{2} + \frac{i(h - t + v_F \cdot q \cdot \cos(\phi))}{\pi T} \right) \right]. \quad (16)$$

1. (h, t) phase diagram at zero temperature

We consider a ballistic S-N bilayer with an in plane magnetic field. At zero temperature, in the clean case without FFLO modulation, the self consistency equation becomes

$$|h|^2 \cdot |h - t| \cdot |h + t| = h_0^4 \quad (17)$$

in the case of a second order phase transition. The number of solutions with physical meaning of the equations (17) differs with the value of t (see figure 5). We define the critical interlayer coupling $t_c = \sqrt{2}h_0 = 1.2473T_{c0}$ that determines the number of physical solutions.

If $t < t_c$, the equation (17) has only one solution. The critical magnetic field at zero temperature writes $h_1 = \frac{1}{2} \sqrt{2t^2 + 2\sqrt{t^4 + 4h_0^4}}$. In the limit $t \ll T_{c0}$, the solution can be

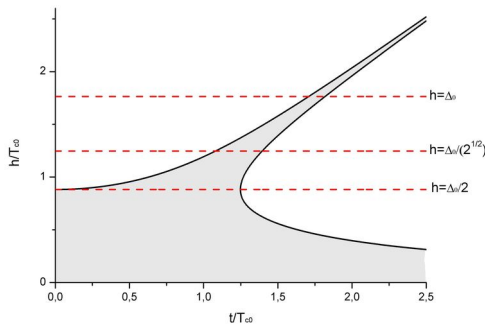


FIG. 5: $(h/T_{c0}, t/T_{c0})$ diagram for the S-N bilayer in the clean limit ($\tau \rightarrow \infty$) at $T=0K$ (solid line). The uniform superconducting state is presented in grey. The line $h = \Delta_0/2$ presents the critical magnetic field for a second order superconducting phase transition for a single superconducting layer. The line $h = \Delta_0$ corresponds to the FFLO paramagnetic limit for a single superconducting layer. The line $h = \Delta_0/\sqrt{2}$ represents the first order paramagnetic limit for a single superconducting layer.

written $h_1 = \frac{\Delta_0}{2} \left(1 + \frac{t^2}{\Delta_0^2}\right)$. We note that the critical magnetic field at $T = 0K$ in the S-N bilayer increases with the interlayer coupling t .

In the case $t > t_c$, the equation (17) has three solutions with physical meaning. The first solution is h_1 . The second and the third solution are $h_2 = \frac{1}{2}\sqrt{2t^2 + 2\sqrt{t^4 - 4h_0^4}}$ and $h_3 = \frac{1}{2}\sqrt{2t^2 - 2\sqrt{t^4 - 4h_0^4}}$ respectively. In the limit $t \gg T_{c0}$, the three solutions can be written as $h_{1,2} = t \pm \Delta_0^4/32t^3$ and $h_3 = \Delta_0^2/4t$. In the limit $t \gg T_{c0}$, T_c is of order of T_{c0}^2/t and then h_3 is of order of T_c . Consequently, h_3 defines the lowest critical magnetic field.

For $t = t_c$ the critical fields h_2 and h_3 coincide.

In the case of high interlayer coupling $t > t_c$, a field-induced superconducting phase appears at high magnetic field. This phase exists between the two magnetic fields $h_{1,2} = t \pm \Delta_0^4/32t^3$. Thus, the new zero temperature paramagnetic limit $h_1 = t + \Delta_0^4/32t^3$ may be tuned far above the usual one $h = \Delta_0$ merely by increasing the interlayer coupling.

We have studied the critical magnetic field at zero temperature for a second order phase transition in a homogeneous superconductor. However, at zero temperature in clean S-N bilayers, the inhomogeneous FFLO state may appear in the S layer. Consequently, we will study the critical magnetic field at $T = 0K$ in the FFLO state. At zero temperature, in the

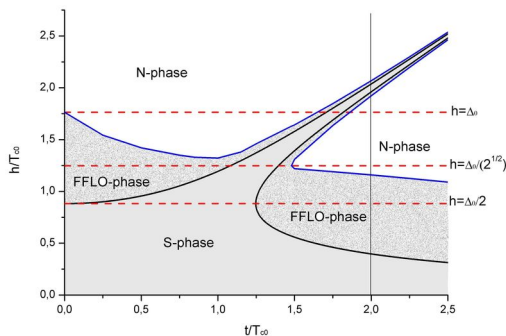


FIG. 6: $(h/T_{c0}, t/T_{c0})$ diagram for the S-N bilayer in the clean limit ($\tau \rightarrow \infty$) (solid line). The uniform superconducting state is presented in the grey region. The non-uniform superconducting (FFLO) phase in the S-N bilayer is presented in the dotted region. The line $h = \Delta_0/2$ presents the critical magnetic field for a second order superconducting phase transition for a single superconducting layer. The line $h = \Delta_0$ represents the FFLO paramagnetic limit for a single superconducting layer. The line $h = \Delta_0/\sqrt{2}$ represents the first order paramagnetic limit for a single superconducting layer.

clean case in the presence of FFLO modulations, the self consistency equation becomes

$$\left| h - t + \sqrt{|(h - t)^2 - (q.v_F)^2|} \right| \cdot \left| h + t + \sqrt{|(h + t)^2 - (q.v_F)^2|} \right| \cdot \left| h + \sqrt{|h^2 - (q.v_F)^2|} \right|^2 = h_0^4 \quad (18)$$

where, in the absence of modulation ($q = 0$), (18) reduces to (17). The paramagnetic limit is enhanced by the presence of FFLO modulations (see figure 6).

The FFLO paramagnetic limit of the S-N bilayer also depends on the interlayer coupling t as seen in the figure 6. The field induced superconducting phase is observable at $T = 0K$, only when h_2 and h_3 are distinguishable. In presence of FFLO modulation, h_2 and h_3 are separated in the case $t \gtrsim 1.5T_{c0}$. Below this value, the usual superconducting (h, T) phase diagram may be strongly deformed (see figure 8).

2. (h, T) phase diagram

In this section, we present (h, T) phase diagram taking into account FFLO modulation. This analysis in general case can be performed only numerically on the basis of the equation

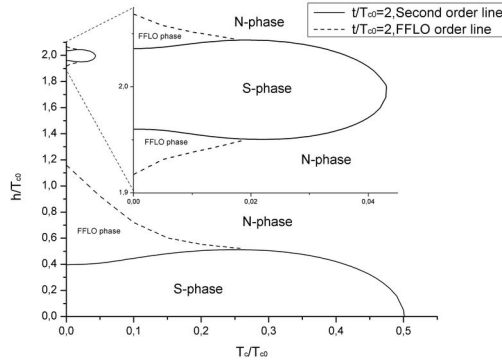


FIG. 7: $(h/T_{c0}, T_c/T_{c0})$ phase transition diagram calculated for $t = 2T_{c0}$ with the second order transition line (solid line) and FFLO state to normal state transition line (dotted line). The inset presents a zoom of the superconducting re-entrance phase around $h \simeq t \simeq 2T_{c0}$.

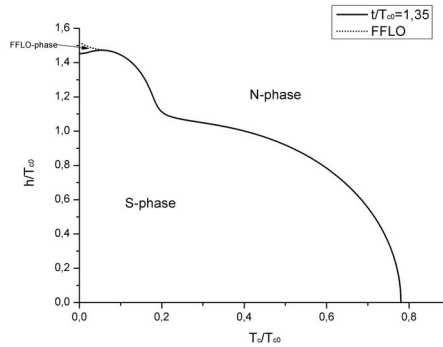


FIG. 8: $(h/T_{c0}, T_c/T_{c0})$ phase transition diagram calculated for $t = 1.35T_{c0}$ with the second order transition line (solid line) and FFLO state to normal state transition line (dotted line). We see below $T_c \simeq 0.2T_{c0}$ that the transition line is deformed. The compensation between the Zeeman effect and the bonding and antibonding state becomes relevant at low temperature.

(16).

A magnetic field induced superconducting state appears at high magnetic field as we can see in the figure 7 for $t = 2.T_{c0}$ and 9 for $t = 3.T_{c0}$. For $t = 1,35.T_{c0}$, the re-entrance superconducting state is created near the standard superconducting state and then deforms the usual phase transition diagram (see figure 8). For $h \simeq t$, the Zeeman effect that destroys the superconductivity is compensated by the bonding-antibonding states degeneracy created by the proximity effect in the N layer (see figure 1). The lower and upper critical lines merge

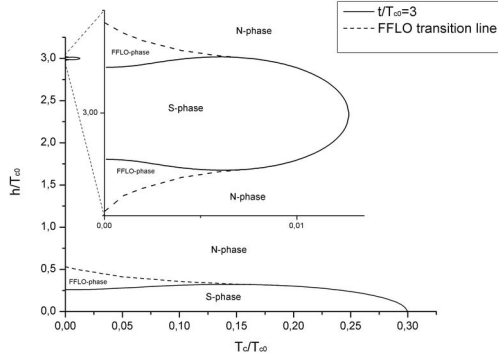


FIG. 9: $(h/T_{c0}, T_c/T_{c0})$ phase transition diagram calculated for $t = 3T_{c0}$ with the second order transition line (solid line) and FFLO state to normal state transition line (dotted line). The inset presents a zoom of the superconducting re-entrance phase around $h \simeq t \simeq 3T_{c0}$.

at field $h = t$ and the field induced superconductivity is confined to temperature lower than $T_M = \pi e^{-C} T_{c0}^2 / (2t)$ in the limit $t \gg T_{c0}$.

B. Effect of the impurities on the phase diagram.

In this section, we study the influence of the impurities on the (h, T) and (h, t) phase diagram of the S-N bilayer. It is known that the presence of impurities is harmful the FFLO modulation^{41, 42}. Consequently, we study the influence of the impurities in the homogeneous case ($q = 0$). In this case, the anomalous Green function is the same as (11) with the substitution $\omega \rightarrow \omega + ih$ and can be written as

$$\tilde{f}_{\downarrow\uparrow}^{0,0}(\omega) = \frac{\Delta_0^* [2(\omega + ih + \frac{1}{2\tau})^2 + t^2]}{(2(\omega + ih) + \frac{1}{2\tau})t^2 + 2(\omega + ih)(\omega + ih + \frac{1}{2\tau})^2} \quad (19)$$

1. (h, t) phase diagram at zero temperature

The effect of the impurities on the (h, t) phase diagram at $T = 0K$ is presented in the figure 10. The (h, t) phase diagram has been calculated numerically. We can see that the impurities change the form of the (h, t) diagram. First, the critical interlayer coupling t_c increases with the impurities diffusion potential. Secondly, the maximal values of h_1 and h_2 decreases with the impurities. However, h_3 increases with the impurities. The

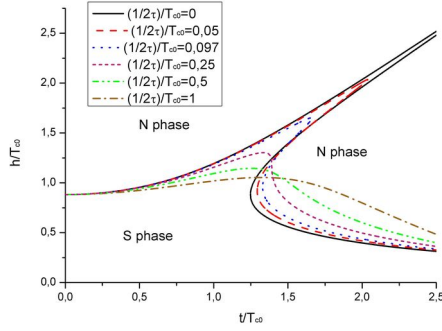


FIG. 10: $(h/T_{c0}, t/T_{c0})$ diagram for the S-N bilayer in the clean case ($\tau \rightarrow \infty$) (solid line) and with respectively $(1/2\tau)/T_{c0} = 0.05$ (0.097, 1) in dashed (respectively dotted, dashed-dotted) line.

superconducting phase in the S layer is enhanced by the presence of the impurities whereas the field induced superconducting phase is destroyed by the impurities.

2. (h, T) phase diagram

The (h, T) phase diagram as been calculated numerically. The reentrance phase is strongly influenced by the presence of the impurities. The maximal critical temperature under which the field induced phase exists, decreases with the impurity scattering potential. Moreover the upper and lower critical fields of the re-entrant superconducting phase (h_1 and h_2) become closer with the increase of impurities diffusion potential as seen in the last part. In the case presented on the figure 11, (in the case $t = 2T_{c0}$), the reentrance phase totally disappears for an impurity diffusion potential $\frac{1}{2\tau}$ upper than $0.097T_{c0}$. In the figure 11, the usual superconducting phase is also influenced by the presence of impurities. The critical magnetic field at zero temperature and the critical temperature at zero magnetic field increase with the impurities diffusion potential. The effective interlayer coupling decreases in the presence of impurities. Then, superconductivity in the S layer is enhanced.

V. EFFECT OF THE IMPURITIES ON THE S-S BILAYER

In this section, we study the S-S bilayer considering the FFLO modulation and the impurities. As predicted in²¹ for ferromagnet superconductor multilayered systems, a π

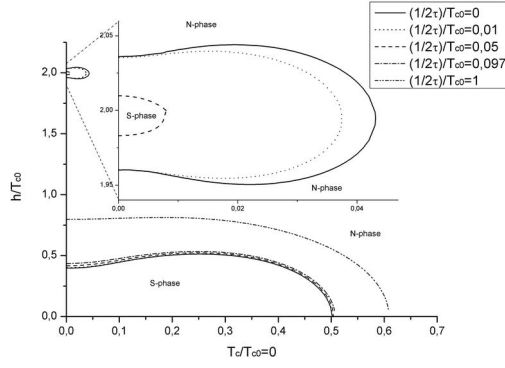


FIG. 11: $(h/T_{c0}, T_c/T_{c0})$ phase transition diagram for the S-N bilayer calculated for $t = 2T_{c0}$ with the second order transition line in the clean case ($(1/2\tau)/T_{c0} = 0$) (solid line) and with respectively $(1/2\tau)/T_{c0} = 0.01$ (0.05, 0.097, 1) in dotted (respectively dashed, dashed-dotted, dashed-dotted-dotted) line. The inset presents a zoom of the superconducting re-entrance phase around $h \simeq t \simeq 2T_{c0}$.

state may appear in S-S bilayer under magnetic field. The S-S bilayer is directly described by the equations (9) and the solution writes

In the π -phase, $\Delta_0^* = -\Delta_1^*$, the solution is

$$\left\langle \tilde{f}_{\downarrow\uparrow}^{0,0}(\omega, q) \right\rangle_{\phi} = - \frac{\left(\sqrt{\left(\omega + \frac{1}{2\tau} + ih - it\right)^2 + v_F^2 q^2} + \sqrt{\left(\omega + \frac{1}{2\tau} + ih + it\right)^2 + v_F^2 q^2} \right) \Delta_0^*}{\frac{1}{2\tau} \sqrt{\left(\omega + \frac{1}{2\tau} + ih - it\right)^2 + v_F^2 q^2} + \frac{1}{2\tau} \sqrt{\left(\omega + \frac{1}{2\tau} + ih + it\right)^2 + v_F^2 q^2} - 2 \sqrt{\left(\omega + \frac{1}{2\tau} + ih + it\right)^2 + v_F^2 q^2} \sqrt{\left(\omega + \frac{1}{2\tau} + ih - it\right)^2 + v_F^2 q^2}}$$

In the clean limit ($\tau \rightarrow \infty$), at zero temperature, the π superconducting phase appears above the critical magnetic field $h_{low} = t - \Delta_0^2/8t$ and below $h_{up} = t + \Delta_0^2/8t$ in the limit $t \gg \Delta_0$. As predicted in²⁰, the modulated FFLO state appears at low temperature and maximize the critical magnetic field. Hence, with the FFLO state, the critical magnetic fields are $h_{low,up} = t \mp \Delta_0^2/4t$ in the limit $t \gg \Delta_0$. The re-entrance superconducting phase is enhanced at low temperature by FFLO modulations. The presence of impurities in the system may destroy the FFLO state and the re-entrance phase. The FFLO transition line should meet quickly the first order transition line. However, we assume that the influence of scattering impurity on FFLO phase is not correlated with the influence of impurities on re-entrance phase. Consequently, we will study the influence of the impurities in the homogeneous case where $q = 0$.

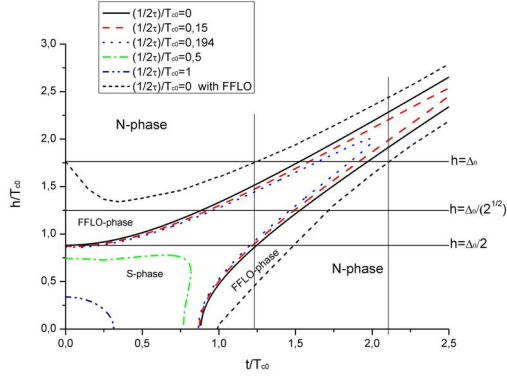


FIG. 12: $(h/T_{c0}, t/T_{c0})$ diagram for the S-S bilayer in the clean case $((1/2\tau)/T_{c0} = 0)$ (solid line) and with respectively $(1/2\tau)/T_{c0} = 0.15$ (0.194, 0.1, 0.5, 1) in dashed (respectively dotted, dashed-dotted and dashed-dotted-dotted) line. The lines $h = \Delta_0/2$, $h = \Delta_0/\sqrt{2}$ and $h = \Delta_0$ present respectively the critical magnetic field for a second order superconducting phase transition, the critical magnetic field for a first order phase transition and the FFLO paramagnetic limit for a single S layer. The close-dashed line is the FFLO paramagnetic limit in the S-S bilayer in the clean limit.

A. (h, t) phase diagram

At $T = 0K$ in the π -state without FFLO modulation, the self consistency equation (??) becomes :

$$\left(4 \left(\frac{1}{2\tau} \right)^2 + \left(2h + \sqrt{|-4t^2 + \left(\frac{1}{2\tau} \right)^2|} \right)^2 \right) \left(4 \left(\frac{1}{2\tau} \right)^2 + \left(2h - \sqrt{|-4t^2 + \left(\frac{1}{2\tau} \right)^2|} \right)^2 \right) = 16h_0^2. \quad (20)$$

The solutions of (20) are $h_{up,low}^{imp} = \frac{1}{2} \sqrt{|-4t^2 + \left(\frac{1}{2\tau} \right)^2| - 4 \left(\frac{1}{2\tau} \right)^2 \pm 4 \sqrt{-\left(\frac{1}{2\tau} \right)^2 |-4t^2 + \left(\frac{1}{2\tau} \right)^2|} + h_0^4}$ where $h_{up,low}^{imp}$ are the critical magnetic field of the S-S bilayer in the presence of impurities (see figure 12). The field induced superconducting state is destroyed in presence of impurities and cannot be observed if $h_{low}^{imp} = h_{up}^{imp}$. We define a critical impurity diffusion time $\tau_c = 1/2 \left(\sqrt{2t^2 - \sqrt{4t^4 - h_0^4}} \right)$ below which the re-entrance phase totally disappears. In the case where $t = 2T_{c0}$ and $h_0 = 0.882T_{c0}$ then $\left(\frac{1}{2\tau} \right)_c \simeq 0.194T_{c0}$.

The critical magnetic field in the presence of FFLO modulation is plotted in the figure 12 in the clean limit. The critical magnetic field in the presence of FFLO modulations is the

upper limit of the critical magnetic field.

We can see that h_{up}^{FFLO} , the upper critical field in presence of FFLO modulations, cross the line $h = \Delta_0$ for $t \simeq 1.25T_{c0}$. It means that the usual superconducting phase is deformed only for $t > 1.25T_{c0}$ at $T = 0K$. Then the field induced superconducting phase becomes observable. The field induced superconducting phase become totally observable when h_{low}^{FFLO} , the lower critical field in presence of FFLO modulations, cross the line $h = \Delta_0$ for $t \simeq 2.1T_{c0}$.

In the uniform case, we would have to consider the first order transition line. For the S-S bilayer, the first order transition line is between the second order and the FFLO transition line. The reentrance phase would appear when h_{up}^I , the upper critical field for a first order phase transition is above $h^I = \Delta_0/\sqrt{2}$ and would be distinguishable if the lower critical field in the case of first order phase transition is higher than h .

B. (h, T) phase diagram

In the π -state, the Cooper pairs are formed by two electrons in the different layer. The standard superconducting state is only due to the 0-phase and then is not influenced by the impurities as predicted by the Anderson theorem. The lower and upper critical lines merge at field $h = t$ and temperature $T_M = \pi e^{-C} T_{c0}^2 / (4t)$ in the limit $t \gg T_{c0}$. The field induced π superconductivity is confined to temperature lower than T_M .

On the phase diagram, we see that the reentrance decreases as the impurity self energy is increasing (see figure 13). The reentrance phase totally disappear for $\frac{1}{2\tau} \simeq 0.194T_{c0}$ in the case where $t = 2T_{c0}$. The existence of first order transition line in the field induced phase transition could influence these results. $h_{up,low}^I$ are higher(smaller) than $h_{up,low}$. Consequently, the critical impurity diffusion time τ_c should be higher than in the case of a second order transition.

VI. CONCLUSION

To conclude, the proximity effect plays a crucial role in the S-N and S-S bilayers. The superconducting critical temperature and the critical magnetic field at zero temperature in the S-N and the S-S bilayers depends directly on the interlayer coupling. We demonstrated that at low temperature, a magnetic field induced superconducting phase appears at high

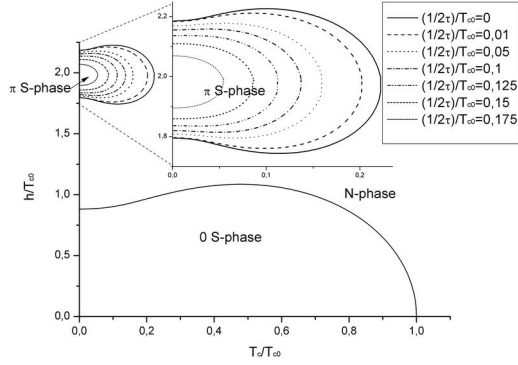


FIG. 13: $(h/T_{c0}, T_c/T_{c0})$ phase transition diagram for the S-S bilayer calculated for $t = 2T_{c0}$ with the second order transition line in the clean case $((1/2\tau)/T_{c0} = 0)$ (solid line) and with respectively $(1/2\tau)/T_{c0} = 0.01$ (0.05, 0.1, 0.125, 0.15, 0.175) in dotted (respectively dashed, dashed-dotted, dashed-dotted-dotted, close dashed, close dotted) line. The inset presents a zoom of the superconducting re-entrance phase around $h \simeq t \simeq 2T_{c0}$.

in-plane magnetic field in S-N bilayers. This field induced phase is originated from the compensation of Zeeman effect energy splitting by the energy splitting between the bonding and antibonding state electronic levels. This reentrance phase provides the possibility to overcome the classical paramagnetic limit.

In S-S and S-N bilayers, the presence of impurities make the superconducting field induced phase more difficult to observe. The impurities produce a broadening of the different energy levels over an energy range $1/\tau$ which prevents exact compensation. It is possible to define a critical mean free pass time over which the re-entrance phase cannot survive. In the S-N and S-S bilayer, the critical mean free pass time τ_c only depends on the interlayer coupling. In S-S bilayer, in the case $t \simeq \Delta_0$ then $\tau_c^{-1} \simeq 0.25\Delta_0$ above which there is no possibility to observe field induced phase. From an experimental point of view, it could be possible with the molecular beam epitaxy techniques to provide a sufficiently large mean free path to realize the condition of field-induced phase observation.

Although we have only treated the Zeeman effect as cooper pair breaking effect, we have to discuss on the orbital pair breaking effect. In the case of multilayered system under in-plane magnetic field, the condition for neglecting the orbital effect is given by $tH\xi_0d/\Phi_0 < \Delta_0$, where ξ_0 is the in-plane coherence length and $\Phi_0 = h/2e$ the superconducting quantum of

magnetic flux. In the case $t \simeq \Delta_0$ we obtain that H must be lower than $H_{orb} \simeq \Phi_0 / (\xi_0 d)$. The typical values $d \simeq 10\text{\AA}$, $\xi_0 \simeq 100\text{\AA}$ the corresponding field is extremely large $H_{orb} \simeq 200T$ and not restrictive at all as the maximal currently attainable permanent magnetic field are $60T$. The orbital effect becomes important in layered system in the case $t \gg \Delta_0$ when the Pauli limit may be exceeded many times. However, it was demonstrated that the orbital pair breaking in layered superconductors are switched off in the high field regime and the superconductivity is restored⁴³. We expect this effect to be the same in S-N and S-S bilayer.

* Also at Institut Universitaire de France, Paris.

- ¹ L.N. Bulaevskii, Sov. Phys.-Usp., **18**, 514 (1975)
- ² N. B. Hannay, T. H. Geballe, B. T. Matthias, K. Andres, P. Schmidt, and D. MacNair, Phys. Rev. Lett., **14**, 225 (1965).
- ³ Y. Koike, S. Tanuma, H. Suematsu and K. Higuchi, Physica B+C, **99**, 503 (1980).
- ⁴ E. Jobiliong, H. D. Zhou, J. A. Janik, Y. -J. Lo, L. Balicas, J. S. Brooks and C. R. Wiebe, Phys. Rev. B, **76**, 052511 (2007).
- ⁵ T. E. Weller, M. Ellerby, S. S. Saxena, R. P. Smith and N. T. Skipper, Nature Physics, **1**, 39 (2005).
- ⁶ U. Welp, W. K. Kwok, G. W. Crabtree, K. G. Vandervoort and J. Z. Liu, Phys. Rev. Lett., **62**, 1908 (1989).
- ⁷ Y. Iye, T. Tamegai, T. Sakakibara, T. Goto, N. Miura, H. Takeya and H. Takei, Physica C, **153-155**, 26 (1988).
- ⁸ M. Oda, Y. Hidaka, M. Suzuki and T. Murakami, Phys. Rev. B, **38**, 252 (1988).
- ⁹ M. Tuominen, A. M. Goldman, Y. Z. Chang and P. Z. Jiang, Phys. Rev. B, **42**, 412 (1990).
- ¹⁰ J.M. Triscone, M. G. Karkut, L. Antognazza, O. Brunner, O. Fisher, Phys. Rev. Lett., **63**, 1016 (1989).
- ¹¹ J.M. Triscone, O. Fisher, O. Brunner, L. Antognazza, A. D. Kent and M. G. Karkut, Phys. Rev. Lett., **64**, 804 (1990).
- ¹² M. Cyrot and D. Pavuna, *Introduction to superconductivity and High T_c materials*, (World Scientific, 1995).
- ¹³ J.R. Cooper, L. Forro and B. Keszeit, Nature, **343**, 444 (1990).

- ¹⁴ S. Martin, A. T. Fiory, R. M. Fleming, L.F. Schneemeyer and J.V. Waszczak, Phys. Rev. Lett., **60**, 2194 (1988).
- ¹⁵ Y. Hidaka, Y. Enomoto, M. Suzuki, M. Oda and T. Murakami, Jpn. J. appl. Phys., 26, L377 (1987).
- ¹⁶ T. Nachtrab, Ch. Bernhard, Ch. Lin, D. Koelle and R. Kleiner, C. R. Physique, **7**, 68 (2006).
- ¹⁷ M. Tinkham, *Introduction to superconductivity*, (Dover publications, 1996).
- ¹⁸ V.L. Ginzburg, Zh. Eksp. Teor. Fiz.,**23**,236 (1952)
- ¹⁹ W.E. Lawrence and S. Doniach, in *Proceedings of the Twelfth International Conference on Low Temperature Physics, Kyoto,1970*, edited by E. Kanda (Keigaku, Tokyo, 1970), p. 361.
- ²⁰ A.I. Buzdin, J. Cayssol and S. Tollis, Phys. Rev. B **73**, 174519 (2006).
- ²¹ A.V. Andreev, A.I. Buzdin and R. M. Osgood III, Phys. Rev. B **43**, 10124 (1991).
- ²² S. Tollis, M.Daumens and A.I. Buzdin, Phys. Rev. B **71**, 024510 (2005).
- ²³ M. Houzet and A. Buzdin, Europhys. Lett. **58**, 596 (2002).
- ²⁴ V. Prokic, A. I. Buzdin and L. Dobrosavljevic-Grujic, Phys. Rev. B **59**, 587 (1999).
- ²⁵ S. Tollis, J. Cayssol and A.I. Buzdin, Phys. Rev. Lett **95**, 167003 (2005).
- ²⁶ A.I. Larkin and Y.N. Ovchinnikov, Sov. Phys. JETP **20**, 762 (1962).
- ²⁷ P. Fulde and R.A. Ferrell, Phys. Rev. **A550**, 135 (1964).
- ²⁸ L.N. Bulaevskii and Zyskin M. V., Phys. Rev. B **42**, 10230 (1990).
- ²⁹ P.G. de Gennes, *Superconductivity of metals and alloys*, (Westview Press,1999).
- ³⁰ D. Saint-James, G. Sarma. and E.J. Thomas, *Type II Superconductivity*, (Pergamon, 1969).
- ³¹ A. Bianchi, R. Movshovich, C. Capan, P. G. Pagliuso and J. L. Sarrao, Phys. Rev. Lett. **91**, 187004 (2003).
- ³² C. Capan, A. Bianchi, R. Movshovich, A. D. Christianson, A. Malinowski, M.F. Hundley, A. Lacerda, P. G. Pagliuso and J. L. Sarrao, Phys. Rev. B. **70**, 134513 (2004).
- ³³ S. Uji, H. Shinagawa, T. Terashima, T. Yakabe, Y. Terai, M. Tokumoto, A. Kobayashi, H. Tanaka and H. Kobayashi, Nature (London), **410**, 908 (2001).
- ³⁴ B.S. Chandrasekhar, Appl. Phys. Lett. **1**, 7 (1962).
- ³⁵ A. M. Clogston, Phys. Rev. Lett. **9**, 266 (1962).
- ³⁶ L.N. Bulaevskii, Sov. Phys. JETP **37**, 1133 (1973).
- ³⁷ A.I. Buzdin and V.V. Tugushev, Sov. Phys. JETP **58**, 428 (1983).
- ³⁸ A.A. Abrikosov, L.P. Gorkov and I. Dzyaloshinsky, *Methods of quantum field theory in statistical*

physics, (Prentice Hall, 1963).

³⁹ G. Eilenberger, *Zeitschrift für Physik* **190**, 142-160 (1966).

⁴⁰ N. Kopnin, *Theory of Nonequilibrium Superconductivity*, (Clarendon press, 2001).

⁴¹ L. G. Aslamazov, *Sov. Phys. JETP* **28**, 773 (1969).

⁴² L. N. Bulaevskii and A. A. Guseinov, *Sov. J. Low Temp. Phys.*, **2**,140-142 (1976).

⁴³ A. G. Lebed and K. Yamaji., *Phys. Rev. Lett.* **80**, 2697 (1998).