

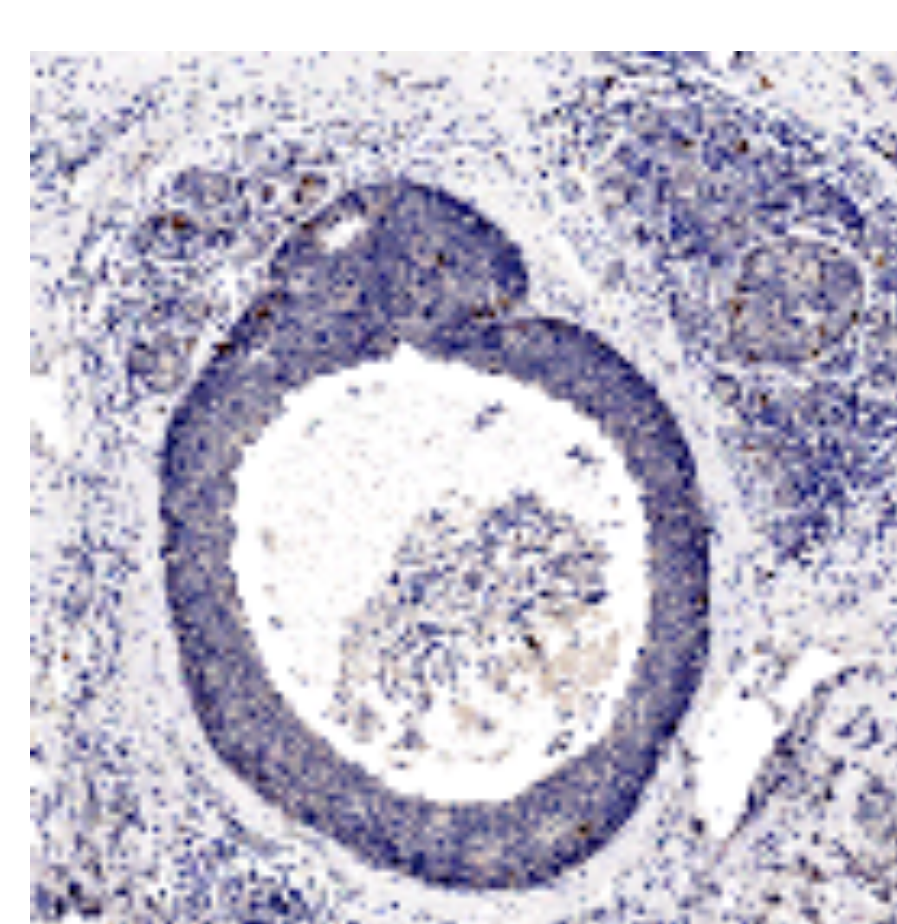
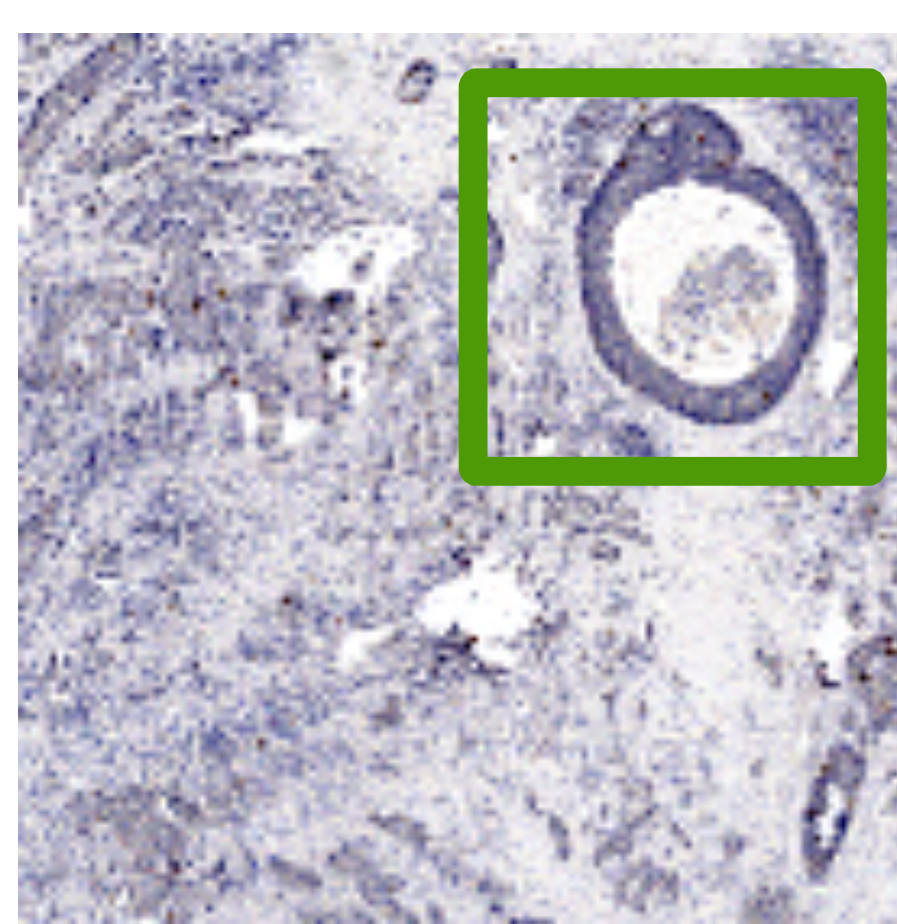
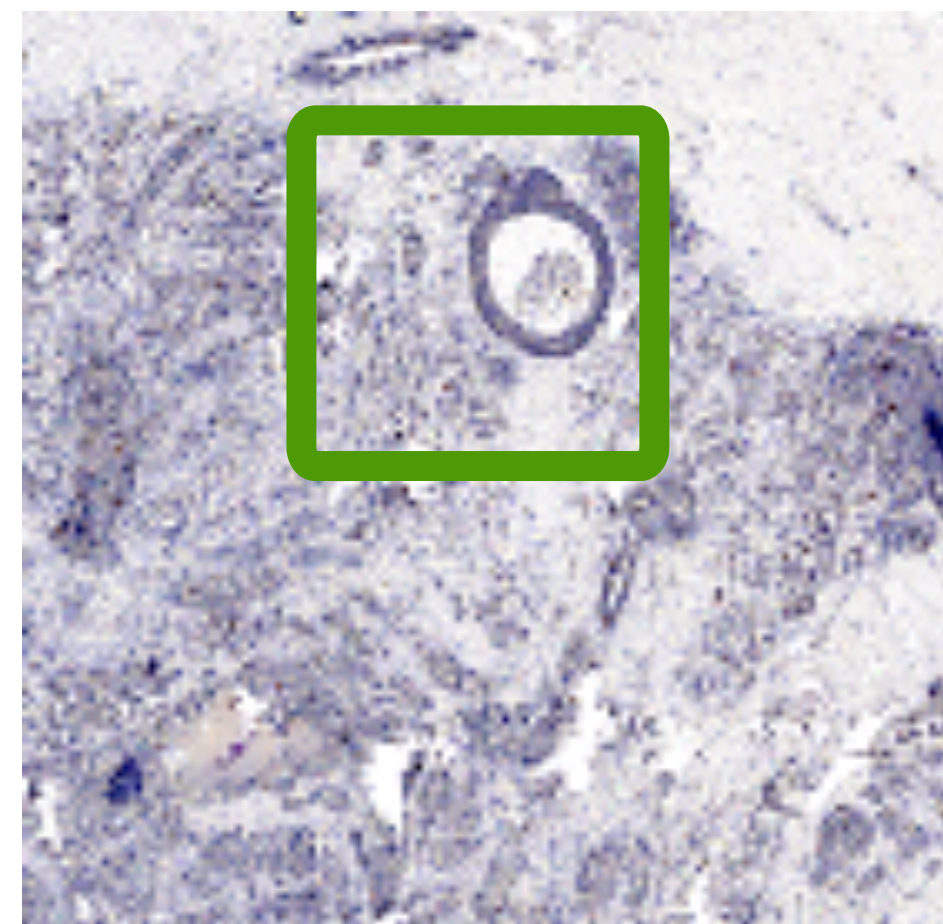
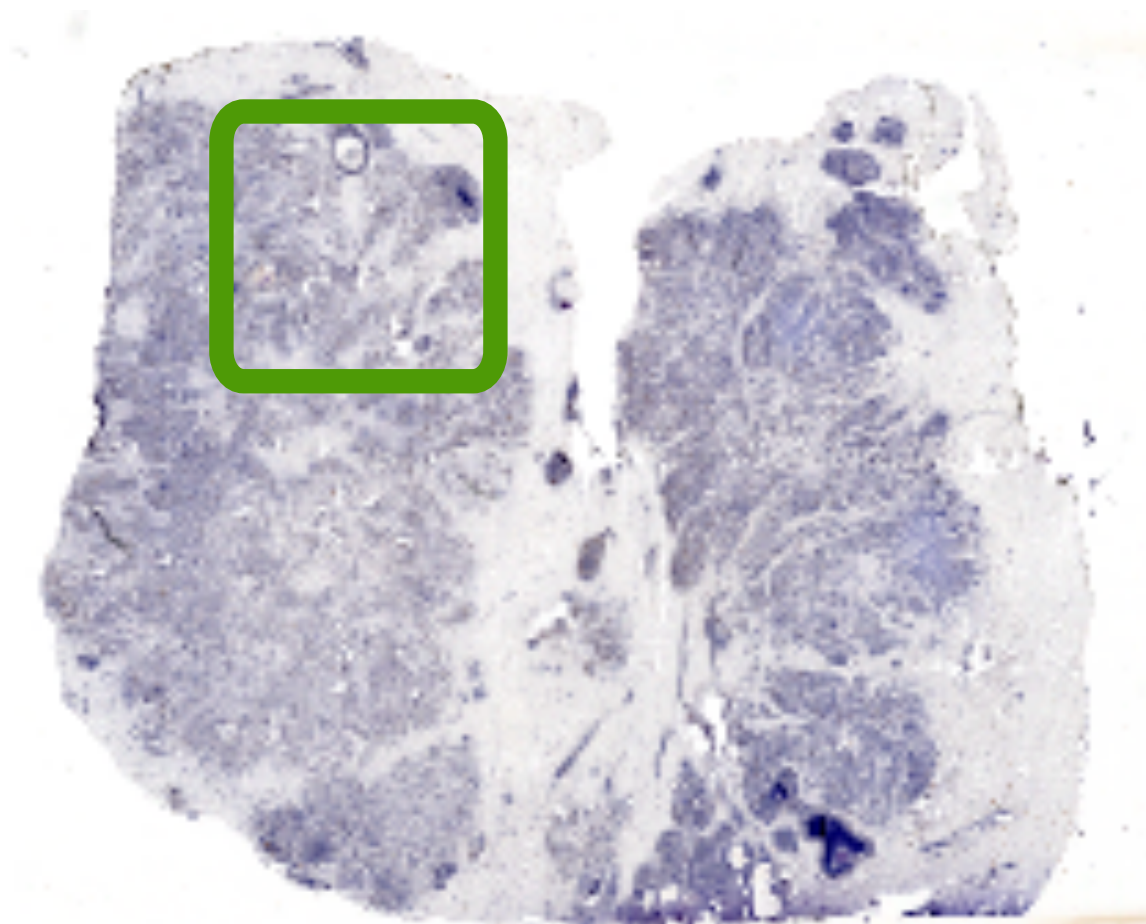
Tiled top-down pyramids and segmentation of large histological images

Romain Goffe¹, Luc Brun¹ and Guillaume Damiand²

¹ GREYC, ENSICAEN,
CNRS, UMR6072, F-14050, Caen, France
{romain.goffe,luc.brun}@greyc.ensicaen.fr

² LIRIS, Université de Lyon,
CNRS, UMR5205, F-69622, Villeurbanne, France
guillaume.damiand@liris.cnrs.fr

Histological images



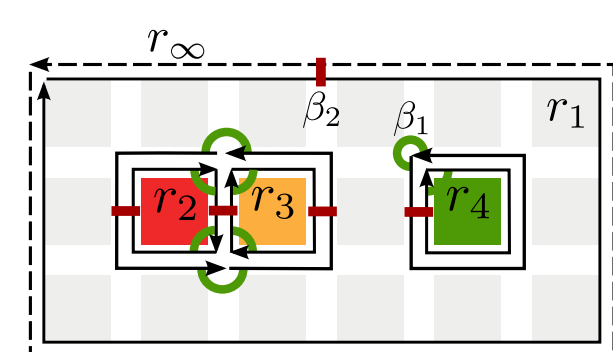
Whole slide imaging

Large images of 20GB

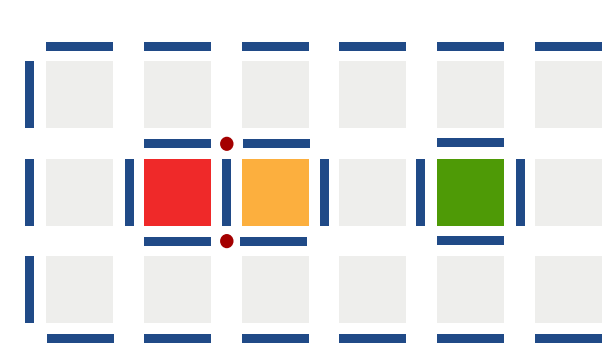
Multi-scale and multi-resolution analysis

Topological maps

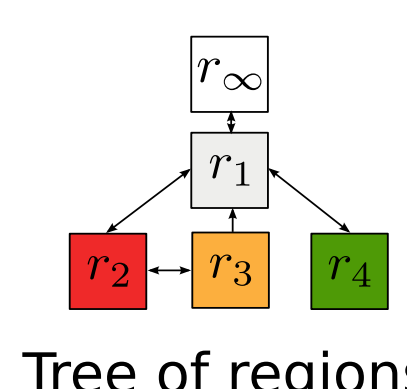
Model



Combinatorial map



Interpixel elements



Tree of regions

Features

Multi-adjacency relationships

- set of darts (half-edges)
- β_1 and β_2 operators

Borders' geometry

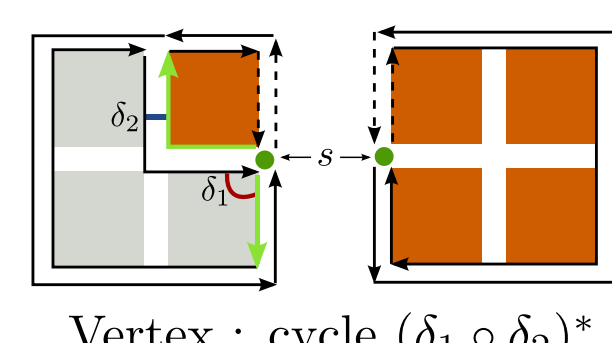
- pointels, linels, pixels
- embedding of darts

Imbrication relationships

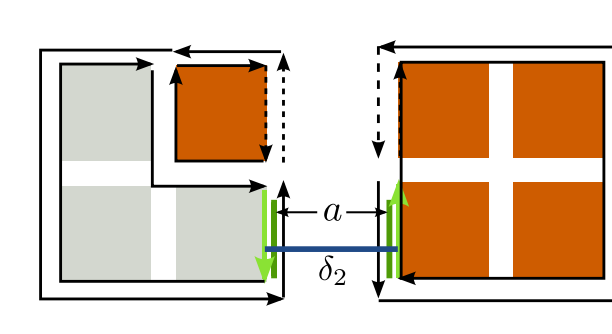
- parent/child relationships
- union-find structure

Tiled maps

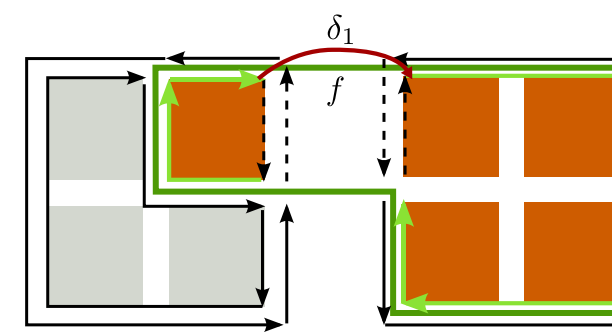
Model



Vertex : cycle $(\delta_1 \circ \delta_2)^*$



Edge : cycle δ_2^*



Face : cycle δ_1^*

Features

- swap/load operations
- represent large partitions with bounded memory
- abstract the decomposition in tile

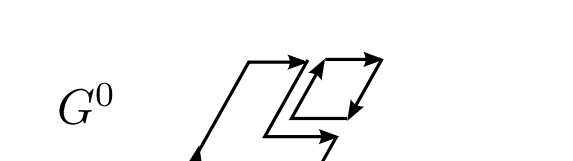
Tiled top-down pyramids



Pyramid of images



Pyramid of tiles



Pyramid of tiled maps

Hierarchical information

$\mathcal{I} = (I^0, \dots, I^n)$

- sequence of images I^k at different resolutions
- integer ratios

\Rightarrow reduction windows between pixels encode the hierarchy

$(\mathcal{I}, \mathcal{T} = (T^0, \dots, T^n))$

- sequence of tilings T^k
- constant tile size

\Rightarrow recursive subdivisions similar to quadtrees

$(\mathcal{I}, \mathcal{T}, \mathcal{G} = (G^0, \dots, G^n))$

- sequence of tiled maps G^k
- each map is a refinement of the previous one

\Rightarrow up/down relationships between darts and regions

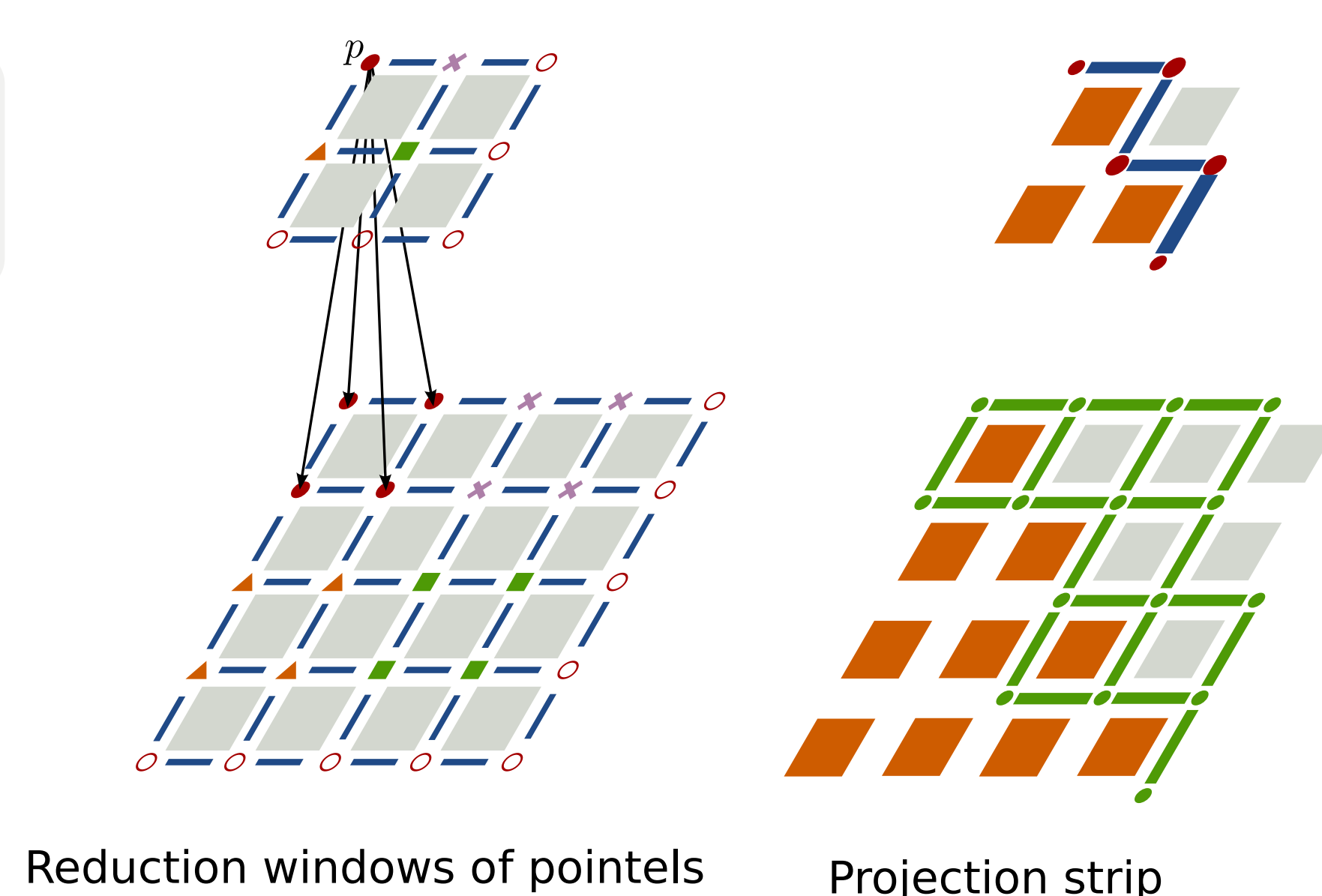
Projection

Objective

projection of a partition's borders at level k to fit on image at level k+1

Projection framework

- non-overlapping without holes pyramid of pointels
- projection strips cannot intersect except on borders' extremities

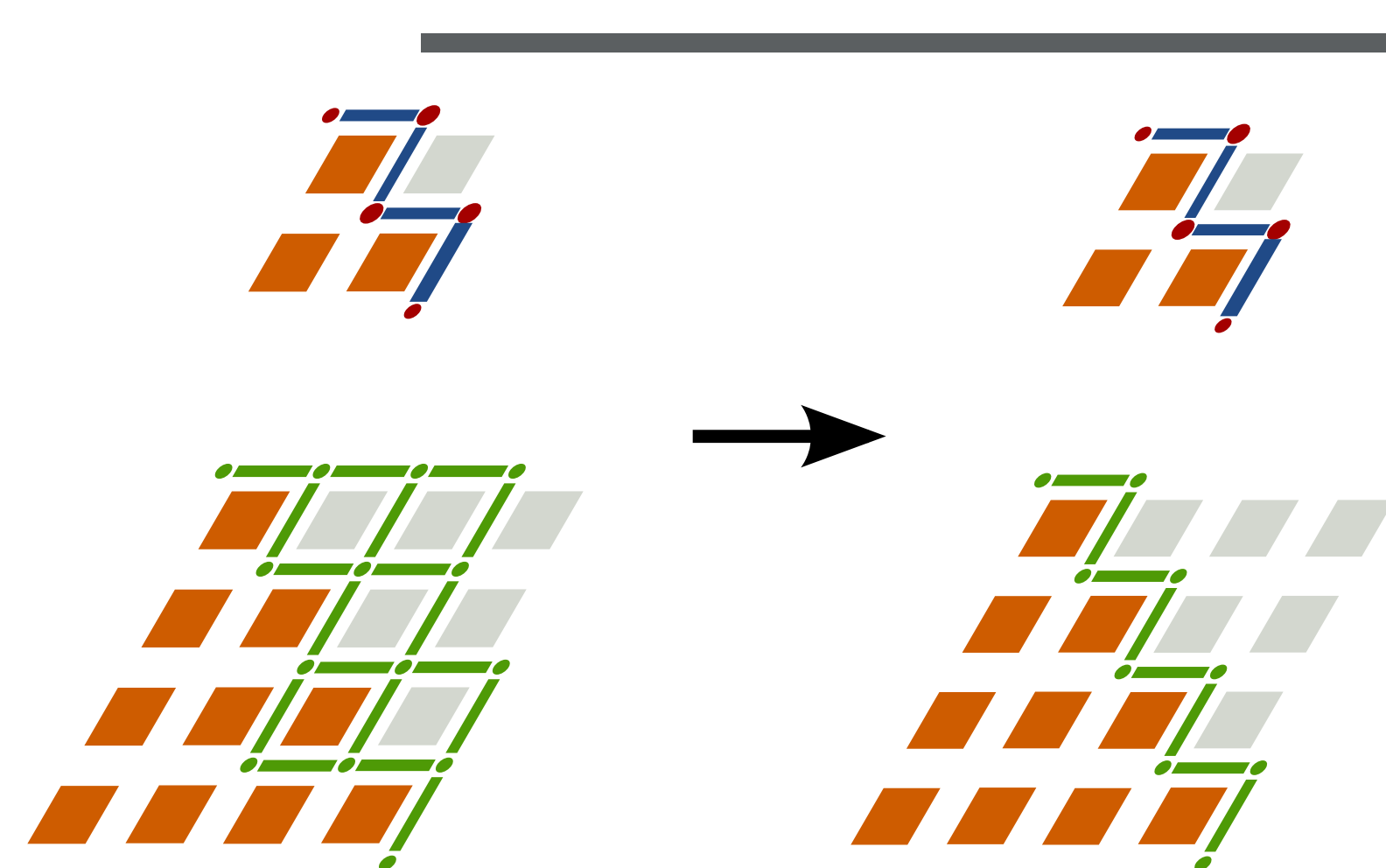


Reduction windows of pointels

Projection strip

Projection of borders

- preserve the topology of previous level
- reduce projection strips on borders' extremities
- path of minimal cost (Dijkstra)



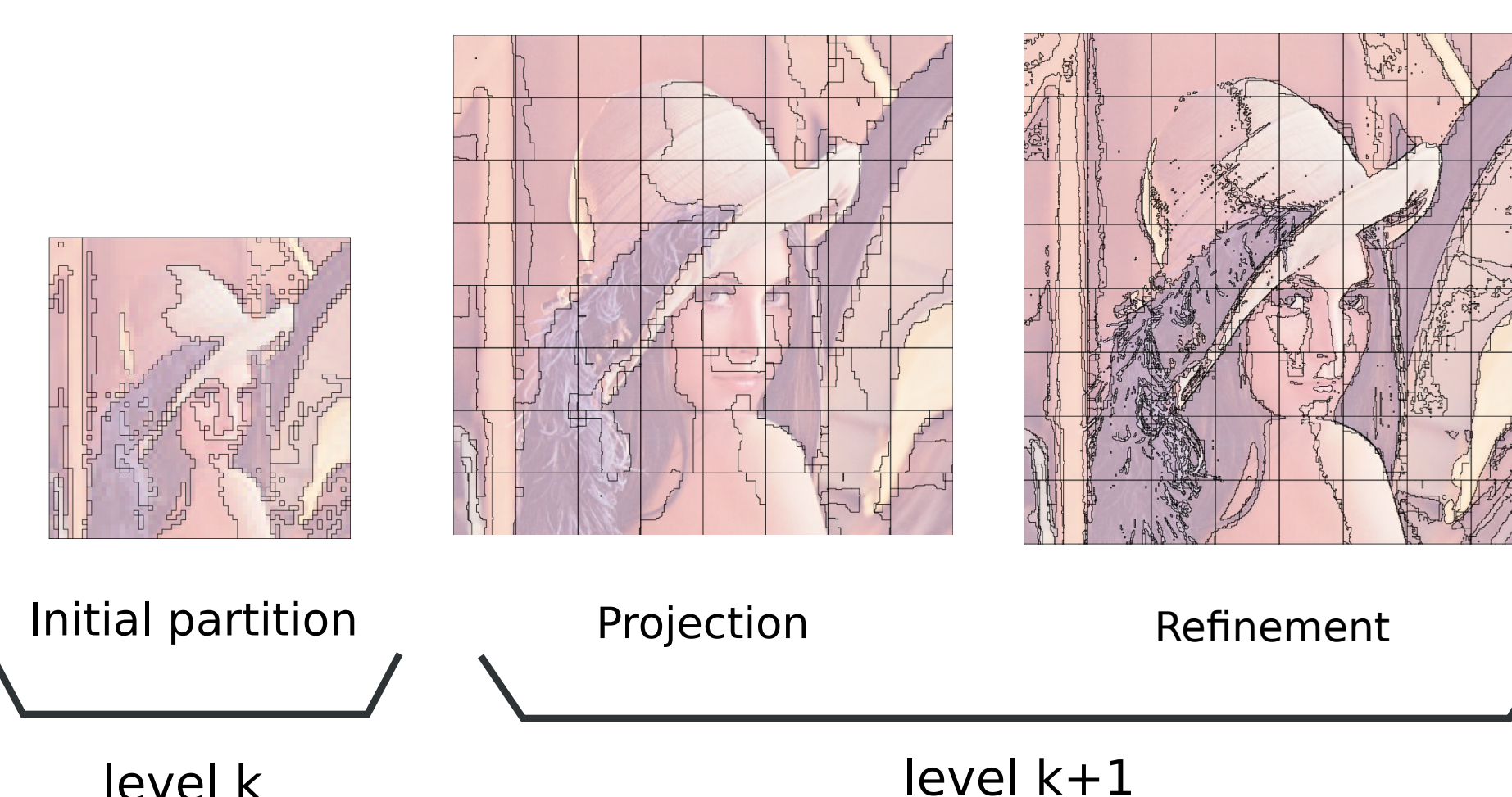
Refinement

Global scheme

- project borders
- select regions of interest
- refine children of selected regions
- iterate

Features

- causality
- focus of attention
- segmentation



Initial partition

Projection

Refinement

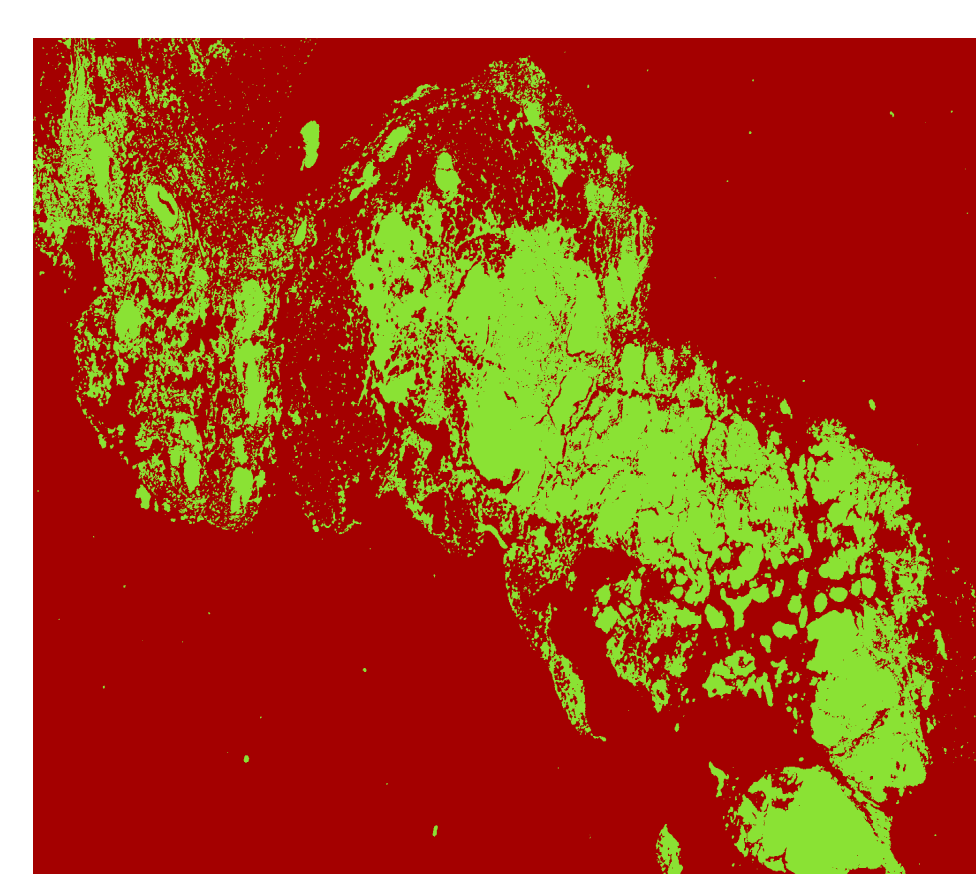
level k

level k+1

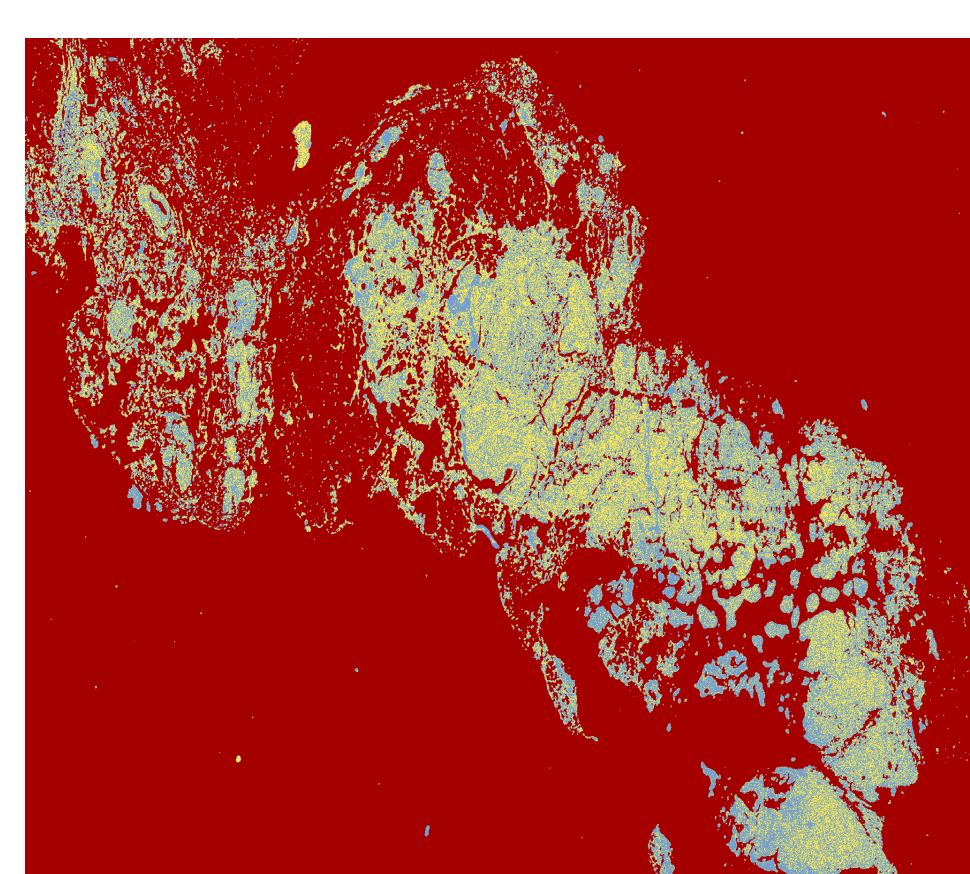
Experiments and results

Segmentation scheme for histological images

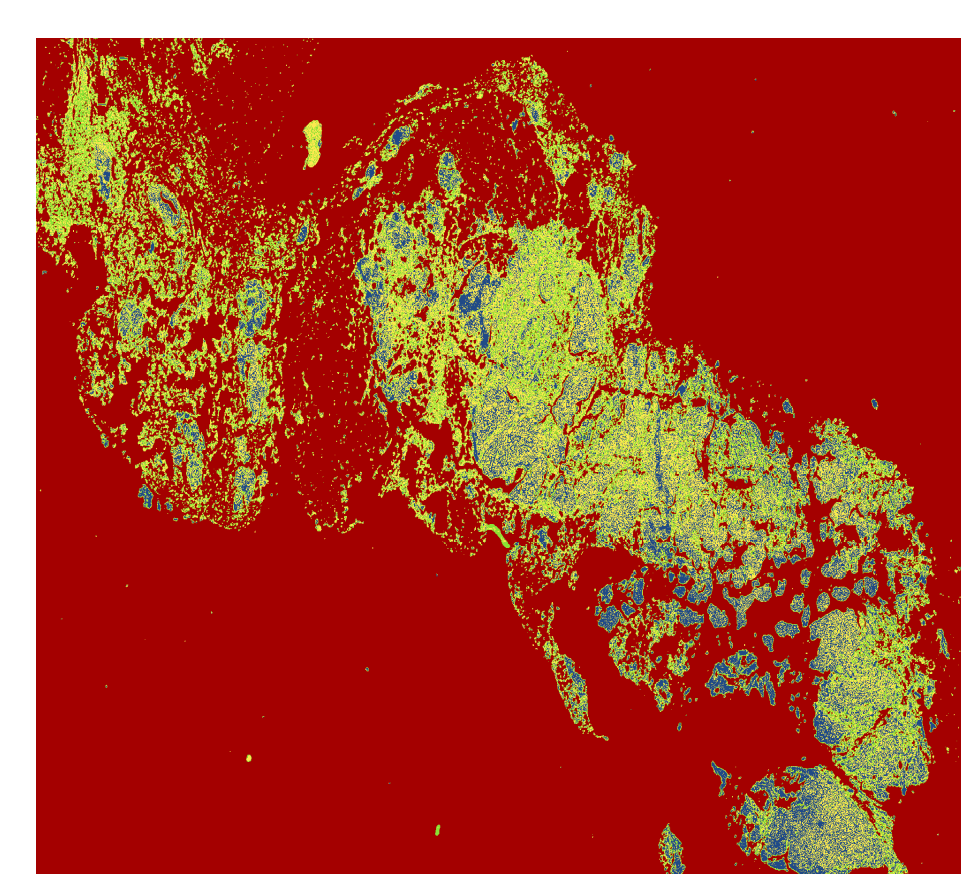
- k-means based segmentation
- successive classifications of regions of interest



Select tissue from background



Select lesions from tissue



Select cancer in situ from lesions

Bounded memory segmentation

Topological, geometrical and hierarchical information

Causal data structure

Acknowledgments

This research is part of the FoGrImMi project, supported by the ANR foundation under grant ANR-06-MDCA-008-01/FOGRIMMI.