



**HAL**  
open science

## Specific detection of *Aspergillus parasiticus* in wheat flour by a highly sensitive PCR assay

Noelia Sardiñas, Vázquez Covadonga, Jéssica Gil-Serna, González-Jaén M<sup>a</sup>  
Teresa, Belén Patiño

### ► To cite this version:

Noelia Sardiñas, Vázquez Covadonga, Jéssica Gil-Serna, González-Jaén M<sup>a</sup> Teresa, Belén Patiño. Specific detection of *Aspergillus parasiticus* in wheat flour by a highly sensitive PCR assay. *Food Additives and Contaminants*, 2010, 27 (06), pp.853-858. 10.1080/19440041003645779 . hal-00593887

**HAL Id: hal-00593887**

**<https://hal.science/hal-00593887>**

Submitted on 18 May 2011

**HAL** is a multi-disciplinary open access archive for the deposit and dissemination of scientific research documents, whether they are published or not. The documents may come from teaching and research institutions in France or abroad, or from public or private research centers.

L'archive ouverte pluridisciplinaire **HAL**, est destinée au dépôt et à la diffusion de documents scientifiques de niveau recherche, publiés ou non, émanant des établissements d'enseignement et de recherche français ou étrangers, des laboratoires publics ou privés.



**Specific detection of *Aspergillus parasiticus* in wheat flour by a highly sensitive PCR assay**

Journal:	<i>Food Additives and Contaminants</i>
Manuscript ID:	TFAC-2009-238.R1
Manuscript Type:	Original Research Paper
Date Submitted by the Author:	18-Dec-2009
Complete List of Authors:	Sardiñas, Noelia; University Complutense, Microbiology III Covadonga, Vázquez; University Complutense, Microbiology III Gil-Serna, Jéssica; University Complutense, Microbiology III M <sup>a</sup> Teresa, gonzález-jaén; University Complutense, Genetics patiño, Belén; University Complutense, microbiology III
Methods/Techniques:	Microbiology, Molecular biology - PCR
Additives/Contaminants:	Mycotoxins – aflatoxins
Food Types:	Cereals

SCHOLARONE™  
Manuscripts

1  
2  
3 **Specific detection of *Aspergillus parasiticus* in wheat flour by a highly**  
4  
5  
6 **sensitive PCR assay**  
7  
8  
9

10  
11 Noelia Sardiñas, Covadonga Vázquez, Jéssica Gil-Serna, M<sup>a</sup> Teresa González-Jaén<sup>1</sup>  
12  
13 and Belén Patiño \*  
14

15  
16  
17  
18  
19  
20 Dpto. Microbiología III, <sup>1</sup>Dpto. Genética, Universidad Complutense de Madrid,  
21  
22 Madrid, Spain  
23  
24  
25  
26  
27  
28  
29  
30  
31  
32  
33  
34  
35  
36  
37  
38  
39  
40  
41  
42  
43  
44  
45  
46  
47  
48  
49  
50  
51  
52  
53

54  
55 \_\_\_\_\_  
56 \*Belén Patiño Álvarez. Departamento de Microbiología III. Facultad de Biología.  
57  
58 Universidad Complutense de Madrid. 28040-Madrid, Spain  
59  
60 e-mail: [belenp@bio.ucm.es](mailto:belenp@bio.ucm.es) Tel.: (34) 913 944 969; Fax: (34) 913 944 964

**Abstract**

*Aspergillus parasiticus* is considered one of the most important aflatoxin producing species which contaminates foodstuffs and beverages for human consumption.

In this work, a specific and highly sensitive PCR protocol was developed to detect *A. parasiticus* using primers designed on the multicopy internal transcribed region of the rDNA unit (ITS1-5.8S-ITS2 rDNA). The assay proved to be highly specific to *A. parasiticus* when it was tested in a wide sample of related species and other fungal species commonly found in commodities, and it allowed discrimination from the closely related *A. flavus*. Accuracy of detection and quantification by conventional PCR were tested with genomic DNA obtained from wheat flour artificially contaminated with spore suspensions of known concentrations. Spore concentrations equal or higher than  $10^6$  spore/g could be detected by the assay directly without prior incubation of the samples. The assay described might be incorporated in routine analyses at critical points of the food chain within HACCP strategies.

**Keywords:** *Aspergillus parasiticus*, aflatoxins, polymerase chain reaction (PCR), detection, wheat flour, internal transcribed spacer (ITS)

**Running head** PCR detection method for *Aspergillus parasiticus* in wheat flour

## Introduction

Aflatoxins are among the most important mycotoxins in food safety causing both acute and chronic diseases and because of it, they are considered as the most carcinogenic natural secondary metabolites known. They are also recognized as a possible human carcinogen (group 1A) by International Agency of Research of Cancer (IARC, 1993). Currently, the upper limits of aflatoxins allowed by the European legislation in foodstuff are under a very stringent regulation (European Commission Regulation, 2006) obliging to destruction of contaminated agricultural products which results in significant economic losses.

Section *Flavi* consists of two groups of species; one includes *Aspergillus flavus*, *A. parasiticus*, *A. nomius* and the recently described species *A. pseudotamarii* and *A. bombycis* (Cary and Ehrlich 2006; Ehrlich et al. 2006), all of these strains produce aflatoxins. The other group includes the aflatoxin non-producing species *A. oryzae*, *A. sojae*, and *A. tamarii*, which have been used for production of traditional fermented foods in Asia (Kumeda and Asao 2001). *A. flavus* and *A. parasiticus* are the two major species that produce aflatoxins (Bennett and Klich 2003; Horn 2007). These species have two different toxicogenic profiles. *A. flavus* produces aflatoxin B<sub>1</sub> (M<sub>1</sub>), B<sub>2</sub>, cyclopiazonic acid, aflatrem, 3-nitropropionic acid, sterigmatocystin, versicolorin A and aspertoxin, whereas *A. parasiticus* produced Aflatoxin B<sub>1</sub> (M<sub>1</sub>), B<sub>2</sub>, G<sub>1</sub>, G<sub>2</sub> and versicolorin A (Wilson et al. 2002).

*Aspergillus parasiticus* can contaminate several food commodities including cereals (Pittet 1998, Giray et al. 2007), pistachios, nuts and peanuts (Jelinek et al. 1989), spices (Bartine and Tantaoui-Elaraki 1997) and figs (Doster et al. 1996; Färber et al. 1997).

1  
2  
3 Foods and seeds are especially susceptible of colonization by aflatoxigenic *Aspergillus*  
4 species in warm climates where they may produce aflatoxins along several stages of the  
5 food chain: either at preharvest, processing, transportation or storage (Ellis et al. 1991).  
6  
7  
8  
9  
10 The level of mold infestation and the identification of governing species are important  
11 indicators of the quality of the raw material and predict the potential risk for the  
12 presence of mycotoxins (Shapira et al. 1996).  
13  
14  
15  
16  
17

18  
19  
20 The traditional methods for identification and detection of these mycotoxigenic fungi in  
21 foods include culture in different media and morphological studies. However, this  
22 approach is very time-consuming, laborious, and requires facilities and mycological  
23 expertise (Edwards et al. 2002). PCR-based methods that target DNA are considered a  
24 good alternative for rapid diagnosis because of their high specificity and sensitivity, and  
25 have been used for the detection of aflatoxigenic strains of *A. flavus* and *A. parasiticus*  
26 (Shapira et al. 1996; Färber et al. 1997; Sweeney et al. 2000; Criseo et al. 2001; Chen et  
27 al. 2002; Mayer et al. 2003; Zachová et al. 2003; Somashekar et al. 2004; González-  
28 Salgado et al. 2008). However, none of these methods has been yet able to reliably  
29 detect and discriminate only *A. parasiticus* from the other species of the Section *Flavi*  
30 by conventional PCR- assays.  
31  
32  
33  
34  
35  
36  
37  
38  
39  
40  
41  
42  
43  
44  
45  
46  
47

48 Most of the PCR protocols are based on aflatoxin biosynthetic genes which are single  
49 copy and, therefore, less sensitive than multicopy genes (Bluhm et al. 2002; Jurado et  
50 al. 2006). Both ITS1 and ITS2 regions (Internal Transcribed Spacers or the rDNA) are  
51 highly variable allowing to discriminate among closely related species (Edwards et al.  
52 2002) and they have been successfully used to detect and identify other mycotoxigenic  
53  
54  
55  
56  
57  
58  
59  
60

1  
2  
3 *Aspergillus* species (Henry et al. 2000; Parenicová et al. 2001; Zhao et al. 2001; Varga  
4  
5  
6 et al. 2004; Patiño et al. 2005; González-Salgado et al. 2005).  
7  
8  
9

10 In this study, we have developed a PCR protocol based on multicopy sequences (ITS)  
11  
12 specific to *A. parasiticus* which allows distinction from other aflatoxigenic molds, in  
13  
14 particular from *A. flavus*, and organisms commonly found on grains. The method  
15  
16 proved to be very efficient even at short incubation times and at low spores  
17  
18 concentration of *A. parasiticus* in wheat flour samples. Cereals, and particularly wheat,  
19  
20 are important dietary products; therefore, aflatoxin risk might become relevant problem.  
21  
22 Early detection of aflatoxigenic-producing species is crucial to prevent aflatoxins  
23  
24 entering the food chain.  
25  
26  
27  
28  
29  
30

## 31 **Materials and methods**

### 32 *Fungal isolates and culture conditions*

33  
34 A detailed description of the fungal strains used in this study is given in Table 1. All  
35  
36 fungal cultures were maintained on potato dextrose-agar (PDA) (Pronadisa, Madrid,  
37  
38 Spain) at  $25\pm 1^\circ\text{C}$  for 4-5 days and then stored at  $4^\circ\text{C}$  until required and as spore  
39  
40 suspension in 15% glycerol at  $-80^\circ\text{C}$ . The isolates were cultured in 100 mL Erlenmeyer  
41  
42 flasks containing 20 mL liquid medium Sabouraud Broth (Pronadisa, Madrid, Spain) at  
43  
44  $28\pm 1^\circ\text{C}$  on orbital shaker (120 rpm). Mycelia from 3-day-old cultures were harvested by  
45  
46 filtration through Whatman paper n° 1 and kept at  $-80^\circ\text{C}$  for DNA isolation.  
47  
48  
49  
50  
51  
52  
53  
54

### 55 *DNA extraction*

56  
57 Genomic DNA extraction from fungal pure cultures was carried out with the protocol  
58  
59 described elsewhere (Querol et al. 1992). However to obtain genomic DNA from wheat  
60

1  
2  
3 flour DNeasy Plant Mini Kit (Qiagen, Valencia, Spain) was used according to  
4  
5 manufacturer's instructions starting from 20 mg of flour sample frozen with liquid  
6  
7 nitrogen and grinded using a mortar and pestle. DNA concentrations were determined  
8  
9 using a NanoDrop<sup>®</sup> ND-1000 spectrophotometer (Nanodrop Technologies, Wilmington,  
10  
11 USA).  
12  
13

#### 14 15 16 17 *Primer design and PCR amplification* 18

19  
20 All genomic DNAs used in this work were tested for suitability for PCR amplification  
21  
22 using primers ITS1 and ITS4 (Henry et al. 2000), which amplify the ITS region in  
23  
24 *Aspergillus*. ITS1-5.8S-ITS2 amplification products of a number of strains of  
25  
26 *Aspergillus* section *Flavi* species were purified by the UltraClean PCR Clean-up kit  
27  
28 (MO-BIO, Carlsbad, USA) and sequenced using the ABI PRISM 3730 DNA Sequencer  
29  
30 (Applied Biosystems, Foster City, USA) according to the manufacturer's instructions in  
31  
32 the Genomic and Proteomic Unit of the University Complutense of Madrid (Spain). All  
33  
34 the amplification products were sequenced in both directions.  
35  
36  
37  
38  
39  
40

41  
42 Specific primer sets were designed on the basis of sequence alignments of the ITS1-  
43  
44 5.8S-ITS2 region of more than fifty *Aspergillus* strains from different origins, and other  
45  
46 related species and genus obtained in this and previous works carried out in our  
47  
48 laboratory, or retrieved from data bases. Sequences were edited and aligned by  
49  
50 ClustalW method using the MegAlign program of DNASTAR software (Lasergene,  
51  
52 Wisconsin, USA).  
53  
54  
55  
56

57  
58 Specific PCR assays were carried out using primers PAR1 (5'  
59  
60 GTCATGGCCGCCGGGGGCGTC 3') and PAR2 (5' CCTGGAAAAAATGGTTG



TTTTGCG 3') for *A. parasiticus*. PCR reactions were performed in an Eppendorf Mastercycler Gradient (Eppendorf, Hamburg, Germany). The PCR amplification protocol used for *A. parasiticus* was as follows: 1 cycle of 5 min at 95°C, 26 cycles of 30s at 95°C (denaturalization), 30s at 69.3°C (annealing), 30 s at 72°C (extension) and finally 1 cycle of 5 min at 72°C.

Amplification reactions were carried out in volumes of 25 µL containing 2 µL (10-80 ng) of template DNA, 1 µL of each primer (20 µM), 2.5 µL of 10x PCR buffer, 1 µL of MgCl<sub>2</sub> (50 mM), 0.2 µL of dNTPs (100 mM) and 0.15 µL of Taq DNA polymerase (5 U/µL) supplied by the manufacturer (Biotools Madrid, Spain). PCR products were detected in 2% agarose ethidium bromide gels in TAE 1X buffer (Tris-acetate 40 mM and EDTA 1.0 mM). The 100 bp DNA ladder (MBI Fermentas, Vilnius, Lithuania) was used as molecular size marker.

#### *Detection of fungal spores in wheat flour*

To test the ability of the PCR to detect *A. parasiticus* in food, different lots of commercially available ground wheat flour (1g each) were inoculated separately with 10<sup>2</sup>, 10<sup>4</sup> or 10<sup>6</sup> spores per g (low, medium and high concentration, respectively) from two strains of *A. parasiticus*, CECT 2681 and CECT 2680.

Fungal conidia suspensions were prepared from a sporulating culture (7 day-old) on Rose Bengale Chloramphenicol Agar (Pronadisa, Madrid, Spain) and filtered through Whatman N°1 paper. Concentrations were measured by microscopy using a Thoma counting chamber and spore suspensions were diluted when necessary.

1  
2  
3 Inoculated samples were incubated at 28 °C for 8, 16, 24 and 48 h respectively before  
4 DNA extraction. Non-inoculated flour samples were used as a negative control. After  
5  
6  
7 incubation, the samples were frozen in liquid nitrogen. Total DNA was extracted as was  
8  
9  
10 described above. All the experiments were made by triplicate.  
11

12  
13  
14  
15 PCR amplifications were performed as indicated previously, with a DNA template  
16  
17 concentration of 100 ng/μl  
18  
19  
20  
21

## 22 **Results**

### 23 *PCR specificity with PAR1/PAR2*

24  
25 The specificity of the primers PAR1 and PAR2 was studied by conventional PCR in a  
26  
27 number of *A. parasiticus* strains from different sources as well as in closely related  
28  
29 species or which frequently occur in the same food matrices (Table 1). A single  
30  
31 fragment of about 430 bp was amplified when genomic DNA from *A. parasiticus* was  
32  
33 used (Figure 1). No product was observed with genomic DNA from isolates of the other  
34  
35 species tested including *Aspergillus* section *Flavi* species (*A. tamarii*, *A. nomius*, *A.*  
36  
37 *bombycis* and *A. flavus*).  
38  
39  
40  
41  
42

43 Control amplifications of the genomic DNA with primers ITS1 and ITS4 were positive  
44  
45 for all the strains analysed.  
46  
47  
48  
49

### 50 *PCR studies with inoculated wheat flour*

51  
52 In order to test the functionality of the method under practical conditions we have  
53  
54 artificially inoculated wheat flour with different spore concentrations. The results are  
55  
56 shown in Figure 2 (2.a and 2.b).  
57  
58  
59  
60

1  
2  
3 Detection of target DNA was achieved with the highest spore concentration tested ( $10^6$   
4 spores) without previous incubation. Increasing incubation times improved detection at  
5  
6 low spore concentration (8 hours with a spore concentration of  $10^4$  and 16 hours with a  
7  
8 spore concentration of  $10^2$ ). No amplification products were obtained when DNA was  
9  
10 extracted from flour control (non-inoculated samples). The two different fungal strains  
11  
12 (CECT 2681 and CECT 2680) and the triplicates of the experiments showed the  
13  
14 reproducibility of the assays.  
15  
16  
17  
18  
19  
20  
21

## 22 Discussion

23  
24 In this work, we have developed a specific PCR protocol for the detection of *A.*  
25  
26 *parasiticus* to be used between others, in a food matrix frequently contaminated with  
27  
28 aflatoxins and other related *Aspergillus* species. Furthermore, that is important because  
29  
30 provide knowledge about these species in relation with ecophysiological factors,  
31  
32 distribution or host/matrix preferences in order to improve strategies to prevent and  
33  
34 control fungal colonization and aflatoxins risk in commodities. The protocol described  
35  
36 is a useful tool for accurate discrimination among the most relevant aflatoxigenic  
37  
38 species within section *Flavi* what is important because they produce different secondary  
39  
40 metabolite profiles (Wilson et al. 2002). Moreover, *A. parasiticus* produces B and G  
41  
42 aflatoxins at generally high concentration and non-aflatoxigenic isolates are uncommon  
43  
44 (Horn et al 1996).  
45  
46  
47  
48  
49  
50  
51

52  
53 Although several PCR-based methods have been developed to detect aflatoxigenic fungi  
54  
55 using aflatoxin biosynthetic genes they do not detect specifically *A. parasiticus* and the  
56  
57 amplification signal obtained it is not very strong (Geisen 1996; Shapira et al. 1996;  
58  
59 Zachová et al. 2003). This could be due to the similarity of the aflatoxin biosynthesis  
60

1  
2  
3 genes used as targets for specific primers in these two species (Yu et al. 1995; Scherm  
4  
5 et al. 2005). The existing variability in ITS region we have used seemed to be sufficient  
6  
7 to discriminate among these closely related species. On the other hand, the use of ITS  
8  
9 regions to develop specific primers instead of single copy genes (either constitutive or  
10  
11 toxin biosynthetic genes) enhances the sensitivity of the assay due to its multi-copy  
12  
13 character (Suarez et al. 2005). Other approaches have been followed to discriminate  
14  
15 both species, but some are more laborious (Somashekar et al. 2004). Recently a protocol  
16  
17 of Real- Time PCR has been published to quantify *A. flavus* and *A. parasiticus* in soil  
18  
19 (Luo et al. 2009), however the authors point out that their protocol might be specific  
20  
21 only to the isolates in California, since they tested no isolates collected from other  
22  
23 geographical areas or from Culture Collections. In addition, quantitative PCR is more  
24  
25 expensive to be used in routine analyses and requires specific equipment.  
26  
27  
28  
29  
30  
31  
32  
33

34 Specific diagnosis in pure cultures is generally easier than directly on commodities  
35  
36 where a complex mycobiota is present, several compounds from food matrices may  
37  
38 affect the efficiency and sensitivity of the assay (Rossen et al. 1992; Färber et al. 1997)  
39  
40 and, in some cases, additional incubation of the food samples for several days is  
41  
42 required (Shapira et al. 1996; Chen et al. 2002; Gonzalez Salgado et al. 2008). In our  
43  
44 case, we could detect the presence of *A. parasiticus* when the highest spore suspension  
45  
46 concentration ( $10^6$  spores/ml) in wheat flour, even without incubation. DNA extraction  
47  
48 from spores is difficult because of their strong cell wall. However, contaminated food  
49  
50 also contains hyphal structures and this might improve detection levels.  
51  
52  
53  
54  
55  
56  
57

58 In conclusion, the PCR based protocol reported in this work was rapid, specific and the  
59  
60 sensitivity achieved higher than previously reported protocols, providing a useful tool

1  
2  
3 for early detection *A. parasiticus* in wheat flour and in other food systems. The PCR  
4  
5 assay and the sample preparation protocol were optimised to avoid the occurrence of  
6  
7 false negative reactions. The assay can be valuable in research, epidemiology studies, as  
8  
9 well as to control industrial quality aiming to reduce the levels of aflatoxins in food  
10  
11 commodities.  
12  
13  
14

### 17 **Acknowledgments**

18  
19 This work was supported by the Spanish MCyT (AGL 2007-66416-C05-02/ALI) and by  
20  
21 the project UCM Santander Central Hispano GR58/08. J. Gil-Serna was supported by a  
22  
23 FPU fellowship by the Spanish Ministry of Science and Innovation  
24  
25  
26  
27  
28

### 29 **References**

- 30  
31 Bartine H, Tantaoui-Elaraki A. 1997. Growth and toxigenesis of *Aspergillus flavus*  
32  
33 isolates on selected spices. J Environ Pathol Toxicol Oncol. 16:61-65.  
34  
35  
36 Bennett JW, Klich M. 2003. Mycotoxins. Clin Microbiol Rev. 16: 479–516.  
37  
38  
39 Bluhm BH, Flaherty JE, Cousin MA, Woloshuk CP. 2002. Multiplex Polymerase Chain  
40  
41 Reaction assay for the differential detection of Trichothecene- and Fumonisin-  
42  
43 producing species of *Fusarium* in cornmeal. J Food Prot. 65:1955-1961.  
44  
45  
46 Cary JW, Ehrlich KC. 2006. Aflatoxigenicity in *Aspergillus*: molecular genetics,  
47  
48 phylogenetic relationships and evolutionary implications. Mycopathol. 162:167-  
49  
50 177.  
51  
52  
53 Chen RS, Tsay JG, Huang YF, Chiou RYY. 2002. Polymerase chain reaction mediated  
54  
55 characterization of molds belonging to the *Aspergillus flavus* group and  
56  
57 detection of *A. parasiticus* in peanut kernels by multiplex polymerase chain  
58  
59 reaction. J Food Prot. 65:840-844.  
60

- 1  
2  
3 Giray B, Girgin G, Engin AB, Aydin S, Sahin G. 2007. Aflatoxins Levels in wheat  
4 samples consumed in some regions of Turkey. Food Control. 18:23-29.  
5  
6  
7  
8 Criseo G, Bagnara A, Bisignano G. 2001. Differentiation of aflatoxin producing and  
9 non-producing strains of *Aspergillus flavus* group. Lett Appl Microbiol. 33:291-  
10 295.  
11  
12  
13  
14  
15 Doster MA, Michailides TJ, Morgan DP. 1996. *Aspergillus* species and mycotoxins in  
16 figs from California orchards. Plant Dis. 80:484-489.  
17  
18  
19  
20 Edwards SG, O'Callaghan J, Dobson ADW. 2002. PCR-based detection and  
21 quantification of mycotoxigenic fungi. Mycol Res. 106:1005-1025.  
22  
23  
24  
25 Ehrlich KC, Kobbeman K, Montalbano BG, Cotty PJ. 2006. Aflatoxin-producing  
26 *Aspergillus* species from Thailand. Int. J. Food Microbiol. 14:153-159.  
27  
28  
29  
30 Ellis WO, Smith JP, Simpson BK. 1991. Aflatoxin in food: occurrence, biosynthesis,  
31 effects on organisms, detection, and methods of control. Crit Rev Food Sci Nutr.  
32 30:403-439.  
33  
34  
35  
36 European Commission. 2006. Commission Regulation (EC) No. 1881/2006, of 10  
37 December 2006 setting maximum levels for certain contaminants in foodstuffs.  
38 Off J Eur Union L364: 5–24.  
39  
40  
41  
42  
43 Färber P, Geisen R, Holzapfel WH. 1997. Detection of aflatoxinogenic fungi in figs by  
44 a PCR reaction. Int J Food Microbiol. 36:215-220.  
45  
46  
47  
48 Geisen R. 1996. A multiplex polymerase chain reaction for the detection of potential  
49 aflatoxin and sterigmatocystin producing fungi. Syst Appl Microbiol. 19:388-  
50 392.  
51  
52  
53  
54  
55 González-Salgado A, Patiño B, Vázquez C, González-Jaén MT. 2005. Discrimination of  
56 *Aspergillus niger* and other *Aspergillus* species belonging to section *Nigri* by  
57 PCR assays. FEMS Microbiol. Lett. 245:353-61.  
58  
59  
60

- 1  
2  
3 González-Salgado A, González-Jaén MT , Vázquez C and Patiño B. 2008. Highly  
4 sensitive PCR- based detection method specific for *Aspergillus flavus* in wheat  
5 flour. Food Addit Contam. 25:758-764.  
6  
7  
8  
9  
10 Henry T, Iwen PC, Hinrichs SH. 2000. Identification of *Aspergillus* species using  
11 internal transcribed spacer regions 1 and 2. J Clin Microbiol. 38:1510-1515.  
12  
13  
14  
15 Horn BW, Greene RL, Sobolev VS, Dorner JW, Powell JH, Layton RC. 1996.  
16 Association of morphology and mycotoxin production with vegetative  
17 compatibility groups in *Aspergillus flavus*, *A. parasiticus*, and *A. tamari*.  
18  
19  
20  
21  
22 Mycologia. 88: 574-587  
23  
24  
25 Horn BW. 2007. Biodiversity of *Aspergillus* section *Flavi* in the United States: A  
26 review. Food Addit Contam. 24:1088-1101.  
27  
28  
29 IARC, 1993. IARC Vol. 56: some naturally occurring substances: some food items and  
30 constituents, heterocyclic aromatic amines and mycotoxins. IARC Monographs  
31 on the Evaluation of Carcinogenic Risks to Humans 56.  
32  
33  
34  
35  
36 Jelinek CF, Pohland AE, Wood GE. 1989. Worldwide occurrence of mycotoxins in  
37 foods and feeds-an update. J Assoc Off Anal Chem. 72:223-230.  
38  
39  
40  
41 Jurado M, Vázquez C, Marín S, Sanchis V, González-Jaén MT. 2006. PCR-based  
42 strategy to detect contamination with mycotoxigenic *Fusarium* species in maize.  
43  
44  
45  
46  
47 Syst Appl Microbiol. 29:681-689.  
48  
49  
50  
51  
52  
53  
54  
55  
56  
57  
58  
59  
60 Kumeda Y, Asao T. 2001. Heteroduplex panel analysis, a novel method for genetic  
identification of *Aspergillus* Section *Flavi* strains. Appl Environ Microbiol.  
67:4084-90.  
Luo Y, Gao W, Doster M, Michailides TJ. 2009. Quantification of conidial density of  
*Aspergillus flavus* and *A. parasiticus* in soil from almond orchards using real-  
time PCR. J Appl Microbiol. 106:1649-1660.

- 1  
2  
3 Mayer Z, Färber P, Geisen R. 2003. Monitoring the production of aflatoxin B1 in wheat  
4  
5 by measuring the concentration of *nor-1* mRNA. *Appl Environ Microbiol.*  
6  
7 69:1154-1158.  
8  
9
- 10 Parenicová L, Skouboe P, Frisvad J, Samson R, Rossen L, Hoor-Suykerbyuk MT,  
11  
12 Visser J. 2001. Combined molecular and biochemical approach identifies  
13  
14 *Aspergillus japonicus* and *Aspergillus aculeatus* as two species. *Appl Environ*  
15  
16 *Microbiol.* 67:521-527.  
17  
18
- 19 Patiño B, González-Salgado A, González-Jaén MT, Vázquez C. 2005. PCR detection  
20  
21 assays for the ochratoxin-producing *Aspergillus carbonarius* and *Aspergillus*  
22  
23 *ochraceus* species. *Int J Food Microbiol.* 104:207-214.  
24  
25
- 26 Pittet A. 1998. Natural occurrence of mycotoxins in foods and feeds-an update review.  
27  
28 *Rev Méd Vét* 149:479-492.  
29  
30
- 31 Querol A, Barrio E, Huerta T, Ramón D, 1992. Molecular monitoring of wine  
32  
33 fermentations conducted by active dry yeast strains. *Appl Environ Microbiol.*  
34  
35 58:2948-2953.  
36  
37
- 38 Rossen L, Norskov P, Holmstrom K, Rasmussen OF. 1992. Inhibition of PCR by  
39  
40 components of food samples, microbial diagnostic assays and DNA-extraction  
41  
42 solutions. *Int J Food Microbiol.* 17:37-45.  
43  
44  
45  
46
- 47 Scherm B, Palomba M, Serra D, Marcello A, Quirico M. 2005. Detection of transcripts  
48  
49 of the aflatoxin genes *aflD*, *aflO* and *aflP* by reverse transcription-polymerase  
50  
51 chain reaction allows differentiation of aflatoxin-producing and non-producing  
52  
53 isolates of *Aspergillus flavus* and *Aspergillus parasiticus*. *Int J Food Microbiol.*  
54  
55 98:201-210.  
56  
57  
58  
59  
60



- 1  
2  
3 Shapira R, Paster N, Eyal O, Menasherov M, Mett A, Salomon R. 1996. Detection of  
4 aflatoxinogenic molds in grains by PCR. *Appl Environl Microbiol.* 62:3270-  
5 3273.  
6  
7  
8  
9  
10  
11 Somashekar D, Rati ER, Chandrashekar A. 2004. PCR-restriction fragment length  
12 analysis of *aflR* gene for differentiation and detection of *Aspergillus flavus* and  
13 *Aspergillus parasiticus* in maize. *Int J Food Microbiol.* 93:101-107.  
14  
15  
16  
17  
18  
19 Suarez MB, Walsh K, Boonham N, O'Neill T, Pearson S, Baker I. 2005. Development  
20 of a real-time PCR (TaqMan®) assays for the detection and quantification of  
21 *Botrytis cinerea* in planta. *Plant Physiol Biochem.* 43:890-899.  
22  
23  
24  
25  
26  
27  
28 Sweeney MJ, Pamies P, Dobson ADW. 2000. The use of reverse transcription  
29 polymerase chain reaction (RT-PCR) for monitoring aflatoxin production in  
30 *Aspergillus parasiticus* 439. *Int J Food Microbiol.* 56:97-103.  
31  
32  
33  
34  
35  
36 Varga J, Juhász A, Ferenc K, Kozakiewick Z. 2004. Molecular diversity of agricultural  
37 important *Aspergillus* species. *Eur J Plant Pathol.* 110:627-640.  
38  
39  
40  
41  
42 Wilson DM, Mubatanhema W, Jurjevic Z. 2002. Biology and ecology of mycotoxigenic  
43 *Aspergillus* species as related to economic and health concerns. *Adv Exp Med*  
44 *Biol.* 504:3-17.  
45  
46  
47  
48  
49 Yu JH, Chang PK, Payne GA, Cary JW, Bhatnagar D, Cleveland TE. 1995. Comparison  
50 of the *omt A* genes encoding *O*-methyltransferases involved in aflatoxin  
51 biosynthesis from *Aspergillus parasiticus* and *A. flavus*. *Gene.* 163:121-125.  
52  
53  
54  
55  
56  
57 Zachová I, Vytrasova J, Peichalova M, Cervenka L, Tavcar-Kalcher G. 2003. Detection  
58 of aflatoxigenic fungi in feeds using the PCR method. *Folia Microbiol.* 48:817-  
59 821.  
60

1  
2  
3 Zhao J, Kong F, Li R, Wang X, Wan Z, Wang D. 2001. Identification of *Aspergillus*  
4  
5 *fumigatus* and related species by nested PCR targeting Ribosomal DNA internal  
6  
7 transcribed spacer regions. J Clin. Microbiol. 39:2261-2266.  
8  
9  
10  
11  
12  
13  
14  
15  
16  
17  
18  
19  
20  
21  
22  
23  
24  
25  
26  
27  
28  
29  
30  
31  
32  
33  
34  
35  
36  
37  
38  
39  
40  
41  
42  
43  
44  
45  
46  
47  
48  
49  
50  
51  
52  
53  
54  
55  
56  
57  
58  
59  
60

For Peer Review Only

**Figure caption**

Figure 1. PCR amplification using primers PAR1/PAR2 and DNA from: Lanes 1-3: *Aspergillus parasiticus* CECT 2680, CECT 2681, Cab5dch6, respectively. Lane 4: *A. flavus* M1hip6. Lane 5: *A. tamarii* IHEM 16077. Lane 6: *A. bombycis* IHEM 19289. Lane 7: *A. nomius* IHEM 18041. Lane 8: *A. carbonarius* CECT 2086. Lane 8: *A. niger* CECT 2091. Lane 9: *Penicillium verrucosum* CECT 2906. Lane 10: *Cladosporium* sp. CL.1. Lane 11 : non- template control. M : DNA molecular size marker.

Figure 2. PCR amplification of *Aspergillus parasiticus* using PAR1/PAR2 primers in wheat flour samples inoculated with different spore concentrations at different incubation times (hours, showed on the top of the figures). (a) Lanes 1, 5 and 9:  $10^2$  spores per g. Lanes 2, 6 and 10:  $10^4$  spores per g. Lanes 3, 7 and 11:  $10^6$  spores per g. Lanes 4, 8 and 12 non- inoculated control. M: DNA molecular size marker.

(b) Lanes 13 and 17:  $10^2$  spores per g. Lanes 14 and 18:  $10^4$  spores per g. Lanes 15 and 19:  $10^6$  spores per g. Lanes 16 and 20 non- inoculated control. Lane 21: positive control Lane 22: non- template control M: DNA molecular size marker.

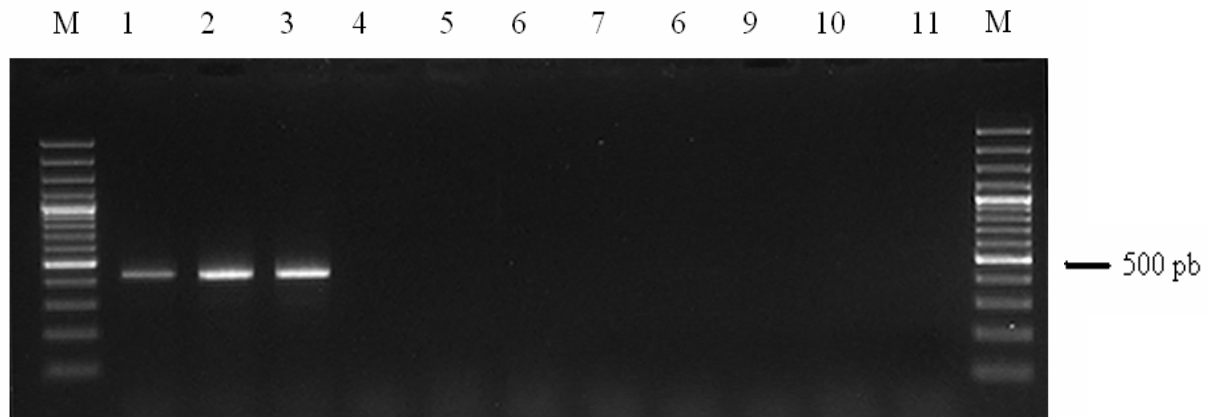


Figure 1. PCR amplification using primers PAR1/PAR2 and DNA from: Lanes 1-3: *Aspergillus parasiticus* CECT 2680, CECT 2681, Cab5dch6, respectively. Lane 4: *A. flavus* M1hip6. Lane 5: *A. tamaritii* IHEM 16077. Lane 6: *A. bombycis* IHEM 19289. Lane 7: *A. nomius* IHEM 18041. Lane 8: *A. carbonarius* CECT 2086. Lane 8: *A. niger* CECT 2091. Lane 9: *Penicillium verrucosum* CECT 2906. Lane 10: *Cladosporium* sp. CL.1. Lane 11 : non- template control. M : DNA molecular size marker.

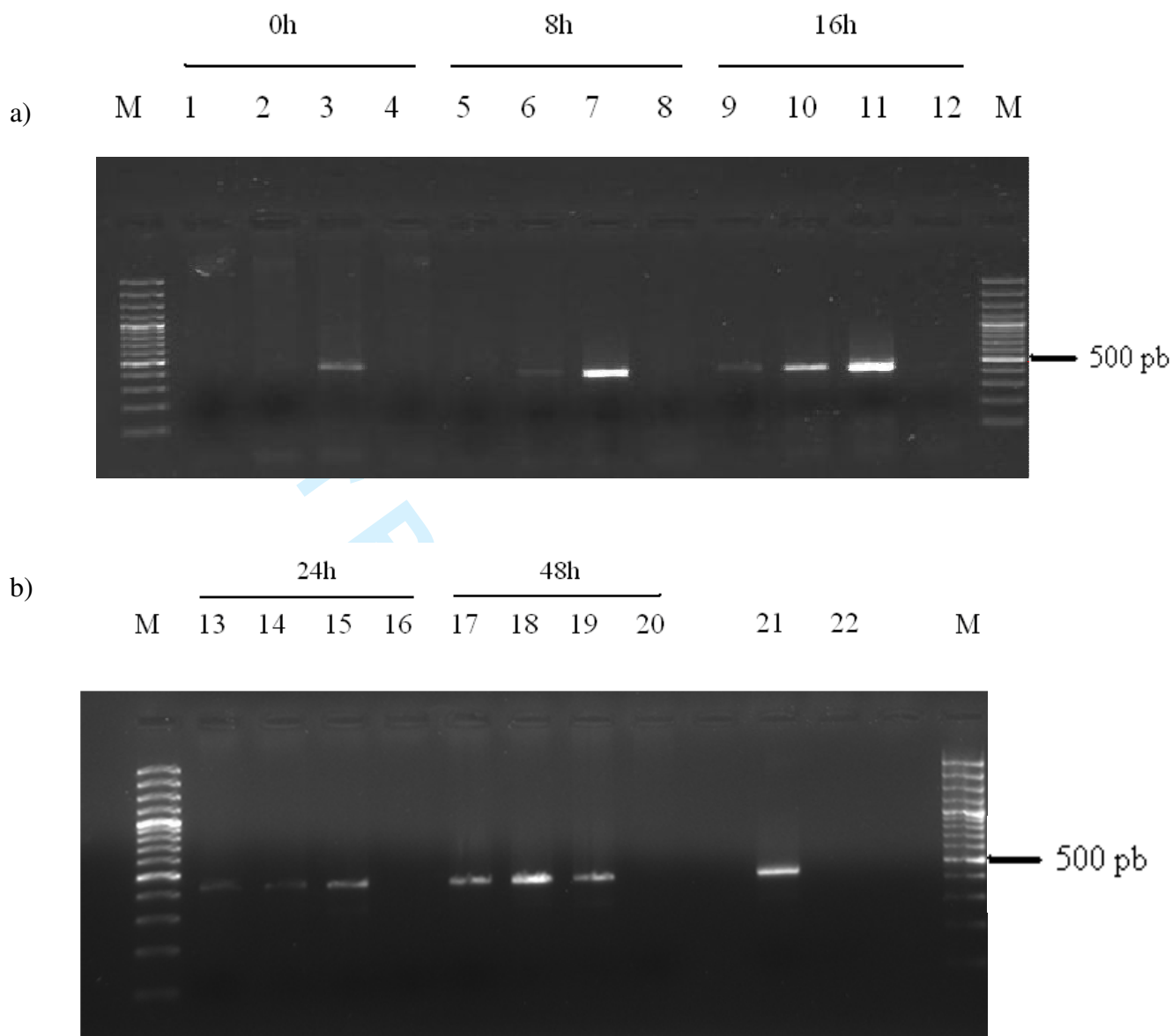


Figure 2. PCR amplification of *Aspergillus parasiticus* using PAR1/PAR2 primers in wheat flour samples inoculated with different spore concentrations at different incubation times (hours, showed on the top of the figures). (a) Lanes 1, 5 and 9:  $10^2$  spores per g. Lanes 2, 6 and 10:  $10^4$  spores per g. Lanes 3, 7 and 11:  $10^6$  spores per g. Lanes 4, 8 and 12 non- inoculated control. M: DNA molecular size marker.

(b) Lanes 13 and 17:  $10^2$  spores per g. Lanes 14 and 18:  $10^4$  spores per g. Lanes 15 and 19:  $10^6$  spores per g. Lanes 16 and 20 non- inoculated control. Lane 21: positive control Lane 22: non- template control M: DNA molecular size marker.

Table I. Fungal strains analysed indicating, origin, species, host and the occurrence of PCR amplification product with primers PAR1 and PAR2. (\*) Strains supplied by Dr. Sanchis (University of Lleida, Spain) and by (\*\*) Dr. Moretti (CNR, Bari, Italy)

STRAIN	ORIGIN	SPECIES	HOST	PAR1-PAR2
NRRL 502 <sup>1</sup>		<i>A. parasiticus</i>		+
NRRL 465		<i>A. parasiticus</i>		+
ATCC 22789		<i>A. parasiticus</i>		+
AP-H21		<i>A. parasiticus</i>	Barley	+
C31	Valladolid (Sp)	<i>A. parasiticus</i>	Barley	+
C32	Valladolid (Sp)	<i>A. parasiticus</i>	Barley	+
CECT 2680		<i>A. parasiticus</i>		+
CECT 2681		<i>A. parasiticus</i>		+
Cab5dch6	Albacete (Sp)	<i>A. parasiticus</i>	Barley	+
M1hip6	Madrid (Sp)	<i>A. flavus</i>	Barley	-
M12hip10		<i>A. flavus</i>	Barley	-
M2hip10	Sevilla (Sp)	<i>A. flavus</i>	Barley	-
ITEM 5135	Italy	<i>A. flavus</i>	Flour	-
ITEM 4592	France	<i>A. flavus</i>	Wheat	-
ITEM 4591	France	<i>A. flavus</i>	Wheat	-
ATCC 20043		<i>A. flavus</i>	Soil	-
NRRL 453 <sup>1</sup>		<i>A. flavus</i>	Brazil nut	-
NRRL 1957		<i>A. flavus</i>	Cellophane diaphragm	-
JMC 12721		<i>A. flavus</i>	Cottonseed	-
IHEM 16077	Belgium	<i>A. tamarii</i>	Bread	-
M6hip1	Albacete (Sp)	<i>A. tamarii</i>	Barley	-
IHEM 19289	Japon	<i>A. bombycis</i>	Silkworm disease	-
IHEM 18041	French Guiana	<i>A. nomius</i>	Mango tree	-
T.T.A.13	Zamora (Sp)	<i>A. fumigatus</i>	Grapes	-
R.T.A.16	Valladolid (Sp)	<i>A. fumigatus</i>	Grapes	-
CECT 2808		<i>A. terreus</i>		-
CECT 2907		<i>A. awamori</i>		-
CECT 2903		<i>A. versicolor</i>		-
CECT 2546		<i>A. sclerotiorum</i>		-
CECT 2091	Canada	<i>A. niger</i>		-
CECT 2574		<i>A. niger</i>		-
TR 20 1	Valladolid (Sp)	<i>A. tubingensis</i>	Wheat	-
TB 2 1	Soria (Sp)	<i>A. tubingensis</i>	Wheat	-
TB 5 2	Valladolid (Sp)	<i>A. tubingensis</i>	Wheat	-
350*	Spain	<i>A. carbonarius</i>	Grapes	-
190*	Spain	<i>A. carbonarius</i>	Grapes	-
CECT 2086		<i>A. carbonarius</i>		-
ITEM 4158**	Italy	<i>A. japonicus</i>	Grapes	-
ITEM 4685**	Portugal	<i>A. japonicus</i>	Grapes	-
CECT 2092		<i>A. ochraceus</i>		-
CECT 2948		<i>A. ochraceus</i>		-
CECT 2093		<i>A. ochraceus</i>		-
CL.1	Valladolid (Sp)	<i>Cladosporium sp</i>	Grapes	-
CECT 2906		<i>Penicillium verrucosum</i>		-

1  
2  
3  
4  
5  
6  
7  
8  
9  
10  
11  
12  
13  
14  
15  
16  
17  
18  
19  
20  
21  
22  
23  
24  
25  
26  
27  
28  
29  
30  
31  
32  
33  
34  
35  
36  
37  
38  
39  
40  
41  
42  
43  
44  
45  
46  
47  
48  
49  
50  
51  
52  
53  
54  
55  
56  
57  
58  
59  
60

For Peer Review Only