



**HAL**  
open science

# Outsourcing ship management: Implications for the logistics chain

Pierre Cariou, François-Charles Wolff

► **To cite this version:**

Pierre Cariou, François-Charles Wolff. Outsourcing ship management: Implications for the logistics chain. 2011. <hal-00593742>

**HAL Id: hal-00593742**

**<https://hal.science/hal-00593742v1>**

Preprint submitted on 17 May 2011

**HAL** is a multi-disciplinary open access archive for the deposit and dissemination of scientific research documents, whether they are published or not. The documents may come from teaching and research institutions in France or abroad, or from public or private research centers.

L'archive ouverte pluridisciplinaire **HAL**, est destinée au dépôt et à la diffusion de documents scientifiques de niveau recherche, publiés ou non, émanant des établissements d'enseignement et de recherche français ou étrangers, des laboratoires publics ou privés.



HAL Authorization

---

## Outsourcing ship management: Implications for the logistics chain

---

Pierre Cariou\*  
Francois-Charles Wolff \*\*

2011/08

\*Euromed Management and World Maritime University  
\*\* LEMNA - Université de Nantes et CNAV et INED - Paris

# Outsourcing ship management: Implications for the logistics chain

## **Pierre Cariou**

Euromed Management, Domaine de Luminy BP 921 - 13288 Marseille Cedex 9, France and World Maritime University, Citadellsvägen 29, S-201 24 Malmö, Sweden.

E-mail: [pierre.cariou@euromed-management.com](mailto:pierre.cariou@euromed-management.com) ; [pc@wmu.se](mailto:pc@wmu.se)

## **Francois-Charles WOLFF**

LEMNA, University of Nantes, BP 52231 Chemin de la Censive du Tertre, 44322 Nantes Cedex 3, France; CNAV and INED, Paris, France.

E-mail: [francois.wolff@univ-nantes.fr](mailto:francois.wolff@univ-nantes.fr) [www.sc-eco.univ-nantes.fr/~fcwolff](http://www.sc-eco.univ-nantes.fr/~fcwolff)

**Abstract:** The purpose of this paper is to contribute to a better understanding of the probability that shipping companies outsource the management of vessels to ship management companies, a decision with many implications for the logistics chain. Data on 39,925 vessels are used to investigate to the extent to which 4,049 different ship-owners (each operating a fleet of at least two vessels) outsource to ship-management service providers. We rely on multinomial Logit random and fixed effects regressions to explain how the characteristics of the owners and vessels influence this decision. We find that the size of the firm in terms of the number of vessels and the number of different types of vessels influence the likelihood of outsourcing. Also, ship-owners frequently implement a mixed strategy and outsource only some of their vessels.

# **Outsourcing ship management: Implications for the logistics chain**

## **Introduction**

With 80% of the volume of international trade transported by sea and with an annual growth rate of 4% over the last twenty years (UNCTAD, 2009), the maritime transport industry plays a crucial role in international supply chains. As in many other industries (Hoffman 2006, 2007; Quinn, 2006; Marasco, 2008), the increase in business complexity when companies move into foreign markets and globalize their supply chains and material sources (Anderson et al., 2010; Patterson et al., 2010) has led many ship-owners to specialize in value-adding activities and to outsource some portion of their activities. This is particularly prevalent for activities related to ship management.

This decision strongly affects shippers and freight forwarders. When selecting a carrier, both actors have an interest in knowing whether shipping companies carrying their cargo are managing the vessels themselves or whether they outsource their management to professional ship managers. Indeed, such a decision is likely to impact the carrier's flexibility, its ability to fulfill shippers' expectations and the safety and security of the international logistics chain. Despite these consequences, few empirical studies have been conducted to improve our understanding of the degree of vessel management outsourcing to third parties and to study factors influencing decisions made by ship-owners.

In this paper, we perform an empirical analysis of this decision-making process using a unique dataset covering the world fleet. We study whether there are differences in outsourcing rates between various shipping sectors and the factors that explain the likelihood of outsourcing. We emphasize the role of covariates such as the size of a ship-owner's fleet, country of domicile and vessel characteristics in our econometric analysis. We find that the outsourcing of vessels is common to all shipping sectors, but that certain owners turn to third-party managers more often than others. Owners also tend to outsource only part of their fleet, using outsourcing as a means of benchmarking.

## **Literature review**

The decision to use external companies for functions traditionally performed within a company can be explained by many reasons (Lieb, 1992; Silver, 2005; Tompkins, 2006; Hannon, 2007; Selviaridis et al., 2008; Lieb and Benz, 2004; Peters et al., 1998; Fugate et al., 2009) and has an effect on final customers (Araujo et al., 1999; Stank et al., 2003).

Outsourcing of a transport asset (Cruijssen et al., 2007) and in particular the management of a vessel is a common feature in international transport. Similarly, this decision is not neutral for shippers as this induces a loss of control for carriers, uncertainties about service levels and questions about the true costs of third party ship management companies (Gourdin, 2006), a decision shippers might not be aware of. The issue raised becomes clearer when marine incidents occur in dramatic circumstances. This was the case when the tanker Erika sunk in 1999. Months were required for investigators to identify the companies in charge of operations, months during which the shipper's image (Total) deteriorated.

Even without the occurrence of such extreme cases, outsourcing of ship management by transport operators or by Non Vessel Operating Common Carriers (NVOCC) also has an effect on the safety and security of the logistics chain. For instance, the service provider no longer chooses the flag of registry or the classification society of the vessel, two components often seen as indicators of substandard shipping (Knapp, 2007; Cariou and Wolff, 2011). Based on such examples, we then consider that it matters for a shipper to know whether the carrier transporting its cargo is likely to outsource the management of the vessel. This leads to a generic distinction between the registered ship-owners and ship managers, the latter being responsible of the day-to-day running of the ships (Lloyd's Register Fairplay, 2009).

Outsourcing ship management does not only affect the logistics chain negatively however. This decision is a common means for a shipping company to obtain a competitive advantage, an opportunity to focus on core skills and to access best-management practices and technologies developed by a third-party service provider (Gourdin, 2006; Parashkevova, 2007). Redundant costs are hence reduced, quality and reliability improved, and speed and flexibility increased (Selnes and Sallis, 2003; Panayides and So, 2005; Selviaridis et al., 2008).

All these benefits are well-acknowledged in the shipping sector. Outsourcing ship management is further expected to produce technical and operational economies of scale,

marketing advantages and bargaining power (Sletmo, 1989; Schulte, 1989; Richards, 1989; Ebsworth, 1989; King, 1997; Gunton, 1997; Willingale, 1998; Panayides, 2001; Panayides and Cullinane, 2002; King and Mitroussi, 2003). Interviews with the CEOs of the top-five professional ship management companies (Lloyd's Ship Manager, 2008a, 2008b, 2009) highlight the shortage of seamen, which may give specialized ship managers a competitive edge over shipping companies by providing flexibility and access to skilled crews. However, such access comes at a substantial cost, estimated at between USD 100,000 and USD 175,000 per year, per vessel, in 2004 (Drewry Shipping Consultants, 2004), or 5% of a vessel's annual operating costs (Justad, 2008).

According to previous studies, several firm-specific factors affect the likelihood of outsourcing. Mitroussi's (2003, 2004a, 2004b) survey of Greek and UK-based ship-owners indicates that the ownership structure and age of a company play significant roles. Firms controlled by at least third-generation managers are more likely to outsource when internationalizing their activities. In addition, the firm's country of domicile appears to be paramount. For instance, UK ship-owners, with an outsourcing rate of about 70%, outsource more frequently than owners from other countries. Conversely, outsourcing is seldom chosen by Indonesian (9.2%), Russian (19.2%) or Greek (24.5%) ship-owners (Cariou and Wolff, 2010). Panayides and Cullinane (2002) found a higher likelihood of outsourcing for container vessels operated by large firms in need of flexibility. In contrast, Drewry Shipping Consultants (2004), and Cariou and Wolff (2010) found that professional ship managers are more often involved in the tanker and offshore markets. Finally, small and large companies outsource approximately 16% of their vessels (Mitroussi, 2004b), with similar proportions explained by needs for expertise or flexibility, respectively (Cariou and Wolff, 2010).

In summary, many factors play a role in operational partnerships between ship-owners and managers, these partnerships having an impact on logistics chain organization. However, no comprehensive econometric analysis has been carried out to study which factors influence a shipowner's decision to outsource the management of all or some vessels or how a company's fleet structure influences that decision.

## **Data and descriptive statistics**

In this paper, we analyze the likelihood of a ship-owner outsourcing the management of a vessel using an initial database of 110,384 vessels. The data is gathered from Lloyd's Register Fairplay (June 2009). We then limit the sample to vessels of more than 1,000 gross tons for which both the names of the owner and the manager are known, which reduces the sample to 39,925 merchant vessels. In order to include an analysis of differing outsourcing levels (ranging from outsourcing of all vessels to the outsourcing no vessels), we then limit the sample to ship-owners operating at least two vessels. This leaves us with a sample of 4,049 owners of 39,925 vessels. The dataset includes information on each vessel's size in terms of gross tonnage, as well as data on each vessel's type, age and flag of registry (Table 1).

*Insert Table 1 here*

The largest ship management companies in 2009 are shown in Figure 1. Data on the firms' holdings was aggregated using Drewry Shipping Consultants' data (2004, p. 9) as well as the members' list provided by Intermanager, the International Association of Ship Management Companies (<http://www.intermanager.org/>). Thirty percent of all vessels managed by professional ship managers are tankers. V Ships' (#2 in Figure 1) main customer is CSL Group Inc., which accounts for 10.8% of vessels managed by V.Ships, while Schulte's (#1) biggest customer is Schulte Group with 27.2%.

A careful examination of data shows that NYK Management (#6) and Cosco HK Shipping Co Ltd (#10) mainly work for one company, NYK Group (87% of vessels under management by NYK Management) and COSCO Group (100% of vessels under management by Cosco HK Shipping). This could place some limitations on our research, as a relationship might exist between the owner and the manager in these cases. Therefore, given the legal and operational complexities of company structures in shipping, our choice of identifying cases of outsourcing in which the owner's name is different from the manager's name increases the apparent outsourcing rate. These figures may, therefore, include situations in which ship-owners have outsourced to subsidiaries, making a direct comparison with former studies difficult.

*Insert Figure 1 here*

Given these limitations, we define three configurations: i) the owner manages all vessels in-house (owner's name = manager's name for all vessels); ii) the owner outsources the management of all vessels (owner  $\neq$  manager); and iii) a mixed strategy, in which only some vessels are outsourced. Table 2 reports preliminary statistics on these mutually exclusive configurations.

*Insert Table 2 here*

Of the 4,049 owners, 45.1% manage all vessels in-house, 29.3% outsource the management of all vessels and 25.5% have a mixed-management strategy. Owners registered in the UK or in Norway outsource more often, while Indonesian, Russian or Greek owners outsource less often. There are indications of a size effect, as 60% of owners with two vessels manage all vessels in house, while the corresponding figure is only 6% for firms with more than 50 vessels. Finally, a mixed strategy is common among ship-owners with a mean fleet size of 18 vessels, while in-house management is common among ship-owners with a mean fleet size of 5.

We also consider the variety of the vessel fleet in terms of three configurations: i) only one type of vessel in an owner's fleet (variety =1), ii) two types of vessels in an owner's fleet (variety =2) or iii) more than two types of vessels in an owner's fleet (variety  $\geq$  3). Figure 2 shows that variety increases with the size of ship-owner. Approximately 90% of owners with more than 50 vessels have at least two different types of vessel in their fleets, compared to 18% for owners with only two vessels. Fifty three percent of owners with vessels of one type keep vessel management in-house (Table 3), while the corresponding figure is 14.8% for owners with three or more types of vessels.

*Insert Figure 2 here*

*Insert Table 3 here*

Figure 3 provides further insights into the various configurations. When a fleet has only one type of ship (Figure 3A), in-house management is the preferred option. This is most prevalent when the vessels are bulkers, dry cargo ships, passenger ships/ferries or reefers. When the

fleet is composed of two (3B), or three or more (3C) distinct types, mixed strategies are more likely.

*Insert Figure 3 here*

### **Econometric analysis of the outsourcing decision**

To identify the factors that influence the ship-owner's decision to outsource, we rely on a Logit multinomial model. Let  $j = 1$  when all vessels are managed in-house,  $j = 2$  when the management of all vessels is outsourced and  $j = 3$  when the mixed strategy is chosen. For each of these random alternatives, the owner's utility is  $U_j = X\beta_j + \varepsilon_j$ , with  $X$  representing a set of control factors,  $\beta_j$  representing the associate vector of coefficients for  $j$  ( $j = 1, 2, 3$ ), and  $\varepsilon_j$  representing a random perturbation. The probability of an owner choosing an alternative  $j$  is  $\Pr(j) = \Pr(U_j > U_k, U_j > U_l)$ , with  $k, l \neq j$ .

Assuming that stochastic utilities, independently and identically distributed with extreme value distribution apply, the corresponding model is a multinomial Logit model (MNL) with the probability of choosing  $j$  equal to  $\Pr(j|X; \beta) = e^{X\beta_j} / \sum_{i=1}^3 e^{X\beta_i}$ . The choice is only dependent on utility differences because  $\Pr(j) = \Pr(U_j - U_k > 0, U_j - U_l > 0)$ . Thus, identification is achieved by normalizing the utility of an alternative to zero, with all vessels managed in-house serving as the reference category.

*Insert Table 4 here*

MNL estimates (Table 4) show that the owner's country of domicile is a significant covariate. Ship-owners registered in Denmark, the UK and Japan choose to outsource more often, while Indonesian and Greek ship-owners are less likely to do so. Furthermore, UK, Norwegian and US ship-owners are more likely to implement a mixed strategy. Size influences outsourcing decisions when the fleet consists of more than 10 vessels. The pattern is different for companies adopting a mixed strategy – in those situations, outsourcing continuously increases with size. Finally, the choice of a mixed strategy is 93% higher for companies with variety.

To measure the influence of vessel characteristics, we use the sample at the vessel level (39,925 vessels). As the focus is on inequalities, we first estimate the probability of a vessel having the same owner and manager, denoted by  $\Pr(SAME_{ji})$ , where  $SAME_{ji}$  is a dummy variable equal to 1 when vessel  $i$  is owned and managed by the same company  $j$ , and 0 otherwise. This probability can be expressed as:

$$\Pr(SAME_{ji} = 1) = \Pr(X_j\beta + Z_{ji}\delta + u_j + \varepsilon_{ji} > 0) \quad (1)$$

where  $X_j$  and  $Z_{ji}$  represent sets of characteristics for the owner and the vessel, respectively.  $\beta$  and  $\delta$  are vectors of coefficients to be estimated,  $u_j$  is an owner-specific unobserved heterogeneity term and  $\varepsilon_{ji}$  is a residual term. These perturbations are assumed to be normally distributed such that  $u_j \sim N(0; \sigma_u^2)$  and  $\varepsilon_{ji} \sim N(0; 1)$ . The corresponding model, with estimates in column 1 of Table 5, is thus a random effect Probit model estimated by quadrature techniques (Butler and Moffitt, 1982).

*Insert Table 5 here*

Outsourcing is influenced by vessel and owner characteristics. The probability of having a vessel managed in-house decreases with vessel age, although it begins to increase again when a vessel is more than 35 years old (+11.6 points of probability). One possible explanation of this phenomenon is that older vessels bring in lower earnings, which might not be sufficient to cover the outsourcing costs. The probability is higher when the vessels are reefers (+13.4 points), but lower when they are tankers (-12.7 points) and offshore vessels (-16.0 points). In-house management is more likely for large vessels and when the owner is domiciled in Indonesia, Greece, South Korea or Turkey (in contrast to the UK, Norway, the US or Denmark). Fleet size has a positive effect when the fleet comprises more than ten vessels. This effect peaks when the fleet numbers 31-50 vessels. Finally, variety matters since the probability of in-house management is reduced by 34.3 points for fleets with at least two types of vessels.

One shortcoming pertaining to the random-effects specification is that the unobserved owner-specific component  $u_j$  is, by definition, uncorrelated with covariates  $X_j$  and  $Z_{ji}$ . This assumption is relaxed with a fixed-effects framework that uses the conditional likelihood approach described in Chamberlain (1980). Two specific features must be considered. First, this specification explains the choice of managing only certain vessels in-house, meaning that owners with all vessels managed in-house or all vessels outsourced are not considered. Second, invariant owner characteristics are captured by the owner fixed effect and are not included in the regressions. The results are reported in column 2 of Table 5 for 19,485 vessels belonging to 1,034 different owners in 2009.

Coefficients from the fixed effect Logit and random effect Probit regressions are fairly similar. Mixed strategies often mean that management is kept in-house for vessels less than five years old and for vessels that are more than 35 years old. Larger vessels (those with a size of more than 50,000gt), reefers and roros are generally managed in-house, in contrast to dry cargo ships, offshore vessels and tanker vessels. The fixed effects specification, therefore, confirms that a vessel's characteristics influence the probability of having a vessel outsourced, which in turn explains why variety produces an impact.

## **Discussion and concluding comments**

The aim of this research was to investigate vessel management outsourcing patterns and to study the factors explaining differences in outsourcing rates. We rely on an econometric analysis of a large dataset covering the world fleet in 2009, with a focus on the roles played by the owner and vessel characteristics. Our findings confirm that although vessel management outsourcing is a feature of the shipping industry, only certain types of owners outsource and owners only outsource the management of some vessels with specific characteristics.

The owner's size is a key factor in decisions to outsource, especially when the owner's fleet encompasses more than 10 vessels. When owners have less than ten vessels, variety governs the decision. With respect to previous studies (Mitroussi, 2004a, 2004b), our estimates suggest that size combined with variety creates the highest likelihood of outsourcing. An owner with many similar vessels will outsource only some of these vessels in order to

benchmark its own management performance and to attain greater flexibility. Conversely, an owner with a small number of vessels, even if they are of different types, may not have all of the necessary knowledge available in-house.

Finally, our paper provides insights into a specific configuration called the “mixed strategy”. This type of configuration is relevant as, regardless of country, 17% to 40% of owners have implemented such a configuration. Our findings stress that this strategy often leads to the in-house management of young and old vessels, and of reefer and ro-ro vessels. It also leads to the outsourcing of middle-aged, dry cargo ships, offshore vessels and tanker vessels.

These empirical findings on diversity in outsourcing rates across maritime sectors highlight many open questions. Many of them have been discussed in previous research on partnership drivers and facilitators (Lambert et al., 2004), on types of operational partnerships within the transportation industry and their evolution over time (Cruijssen et al., 2007; Fugate et al., 2009), and on the need for customized partnerships (Lambert et al., 1999). Further investigations into these issues would require an in-depth analysis of the ownership structure of shipping companies with a classification system that makes a clear distinction between vessels outsourced to third-party professional managers and vessels outsourced to ship management companies with “shareholding ties” to the owning companies (Mitroussi, 2003).

Lastly, it raises questions on the transparency of supply chains relying heavily on shipping and for which supply chains safety and security are two hot issues. For shippers, the increasing trend of ship management outsourcing multiplies the number of stakeholders and raises questions on which carrier shippers should select. This article clearly contributes to this debate by shedding light on the complexity of the outsourcing decision-making process.

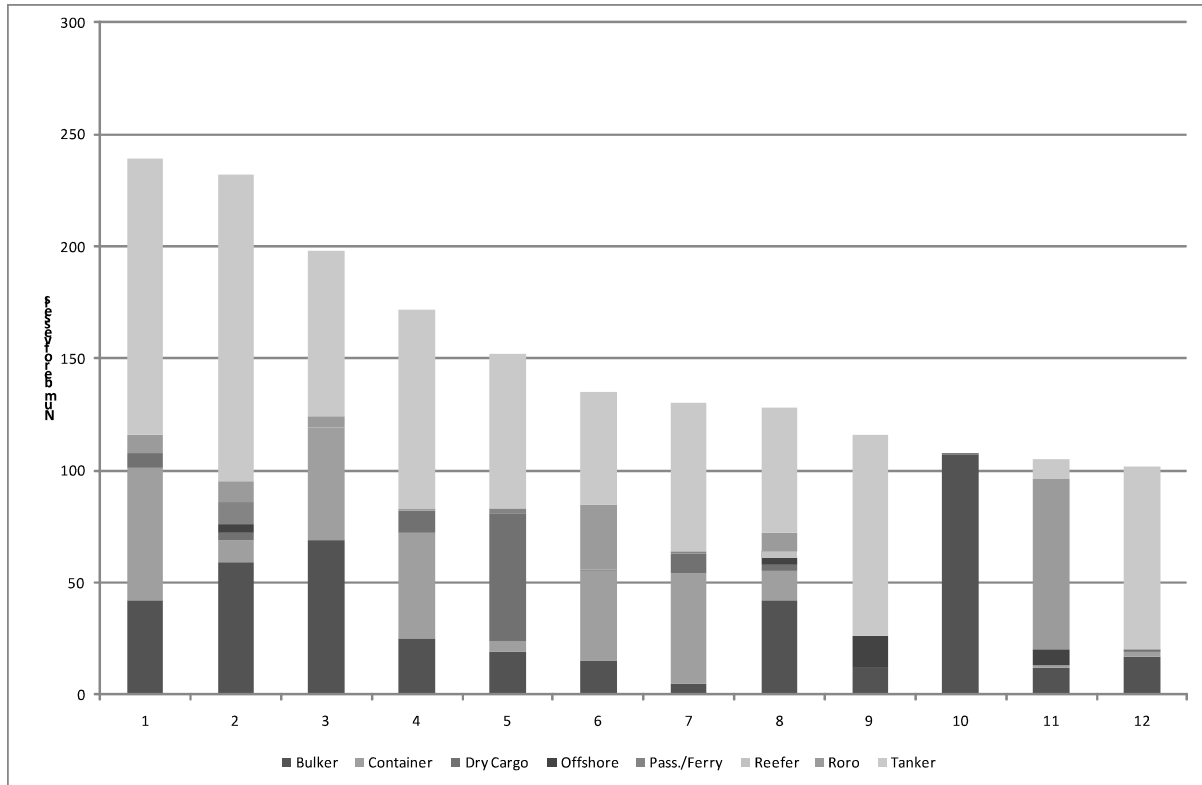
## References

- Anderson, E., Coltman, T., Devinney, T. and Keating, B. (2010) "What drives the choice of third party logistics provider?" *Social Science Research Network*. Retrieved (September 2010) at [http://papers.ssrn.com/sol3/papers.cfm?abstract\\_id=1277184](http://papers.ssrn.com/sol3/papers.cfm?abstract_id=1277184)
- Araujo, L., Dubois, A. and Gadde, L-E. (1999), "Managing interfaces with suppliers", *Industrial Marketing Management*, Vol. 28, pp. 497-506.
- Butler, L.S. and Moffitt, R. (1982), "A computationally efficient quadrature procedure for the one factor multinomial Probit model", *Econometrica*, Vol. 50, pp. 761-764.
- Cariou, P. and Wolff F-C. (2010), "Understanding the choice by ship-owners of third-party managers", *mimeo*, World Maritime University.
- Cariou, P. and Wolff F-C. (2011), "Do Port State Control inspections influence flag- and class-hopping phenomena in shipping?", *Journal of Transport Economics and Policy* 45, Part 2, May, pp. 155-177.
- Chamberlain, G. (1980), "Analysis of covariance with qualitative data", *Review of Economic Studies*, Vol. 47, pp. 225-238.
- Cruijssen, F., Dullaert, W. and Fleuren, H. (2007), "Horizontal cooperation in transport and logistics: A literature review", *Transportation Journal*, Summer, pp. 22-39.
- Drewry Shipping Consultants, (2004), *Ship management*, Drewry Shipping Consultants Publication.
- Ebsworth, R. (1989), "In-house ship managers. Do they have a future as Independents? International Ship Management: Profit or Loss from Shipping's Revival", *Lloyd's Ship Manager and Shipping News International Conference*. London: Lloyd's of London Press.
- Fugate, B., David-Sramek B. and Goldsby, T.J. (2009), "Operational collaboration between shippers and carriers in the transportation industry", *The International Journal of Logistics Management*, Vol. 20 No. 3, pp. 425-447.
- Gourdin, K.N. (2006), *Global logistics management. A competitive advantage for the 21<sup>st</sup> century*, Second Edition, Blackwell Publishing.
- Gunton, P. (1997), "Ship management", *Lloyd's Nautical Yearbook 1996*. London: LLP, pp. 25-35.
- Hannon, D. (2007), "Choose wisely: Not all third-party logistics are the same", *Purchasing*, Vol. 14, pp. 35-36.
- Hoffman, W. (2006), "3PLs maturing fast", *Traffic World* 27 (November), pp. 9-12.
- Hoffman, W. (2007), "3PLs reach record revenue", *Traffic World* 23 (April), pp. 18-19.
- Justad, A.M. (2008), "Taking delivery: how to achieve lasting value from outsourcing", Eitzen Maritime Services ASA, *Lloyd's List 18<sup>th</sup> Annual International Ship Management Conference*, Cyprus, October.
- King, J. (1997), "Globalisation of logistics management: present status and prospects", *Maritime Policy and Management*, Vol. 24, No. 4, pp. 381-387.
- King, J. and Mitroussi, K. (2003), "Third Party Ship Management: A Greek Perspective", *Maritime Economics and Logistics*, Vol.5, No.3, pp.301-310.

- Knapp, S. (2007). *The econometrics of maritime safety - Recommendation to enhance safety at sea*. Doctoral Thesis, Erasmus University, Rotterdam.
- Lambert, D.M., Emmelhainz, M.A. and Gardner, J.T. (1999), "Building successful logistics partnerships", *Journal of Business Logistics*, Vol. 20, No. 1, pp. 165-181.
- Lambert, D.M., Knemeyer, A.M. and Gardner, J.T. (2004), "Supply chain partnerships: model validation and implementation", *Journal of Business Logistics*, Vol. 25, No. 2, pp. 21-42.
- Lieb, R.C. (1992), "The use of third-party logistics services by large American manufacturers", *Journal of Business Logistics*, Vol. 13, pp. 29-42.
- Lieb, R.C. and Benz, B.A. (2004), "The use of third-party logistics services by large American manufacturers", *Transportation Journal*, Vol. 43, pp. 1-7.
- Lloyd' Register Fairplay, (2009) World shipping encyclopedia.
- Lloyd's Ship Manager, (2008a), "Owners contribute to crew training", *Lloyd's Shipping Manager*, June, pp. 27-30.
- Lloyd's Ship Manager, (2008b), "The manager's challenges", *Lloyd's Shipping Manager*, April, pp. 29-33.
- Lloyd's Ship Manager, (2009), "Crew challenges remain despite the downturn", *Lloyd's Shipping Manager*, March, pp. 4-6.
- Marasco, A. (2008), "Third-party logistics: A literature review", *International Journal of Productions Economics*, Vol. 113, pp.127-147.
- Mitroussi, K. (2003), "Third party ship management: the case of separation of ownership and management in shipping context", *Maritime Policy and Management*, Vol. 30, No. 1, pp. 77-90.
- Mitroussi, K. (2004a), "The ship owners' stance on third party ship management: an empirical study", *Maritime Policy and Management*, Vol. 31 No. 1, pp. 31-45.
- Mitroussi, K. (2004b), "The role of organisational characteristics of ship owning firms in the use of third party ship management", *Marine Policy*, Vol. 28, No. 4, pp. 325-333.
- Panayides, P.M. (2001), *Professional Ship Management: Marketing and Strategy*. Ashgate Publishing Ltd.
- Panayides, P.M. and Cullinane, K.P.B. (2002), "The vertical disintegration of ship management: choice criteria for third party selection and evaluation", *Maritime Policy and management*, Vol. 29, No. 1, pp. 45-64.
- Panayides, P.M. and So, M. (2005), "Logistics service providers-client relationships, relationships", *Transportation Research Part E*, Vol. 41, pp. 179-200.
- Parashkevova, L. (2007), "Logistics outsourcing – A means of assuring the competitive advantage for an organization", *Vadyba/Management*, Vol. 2(15), pp. 29-38.
- Patterson, Z., Ewing, G.O. and Haider, M. (2010), "How different is carrier for third party logistics companies?" *Transportation Research Part E*, doi:10.1016/j.tre.2010.01.005
- Peters, M.J., Lieb, R.C. and Randall, H.L., (1998), "The use of third-party logistics services by European industry", *Transport Logistics*, Vol. 1, pp. 167-179.
- Quinn, J.P. (2006), "3PLs hit their stride". *Logistics Management* (July), 3T-8T.

- Richards, J. (1989), "Reducing ship investments risks. The ship manager's role, International Ship Management: Profit or Loss from Shipping's Revival", *Lloyd's Ship Manager and Shipping News International Conference*. London: Lloyd's of London Press.
- Schulte, H. (1989), "Third party management moving forward and adapting to change, *Supplement to Lloyd's Ship Manager and Shipping News International*, March, 1.
- Silver, O. (2005), "How 3PLs can help manage the increasing complexities of transportation", *Canadian Transportation and Logistics*, October, pp. 36-37.
- Selnes, F. and Sallis, J. (2003), "Promoting relationship learning", *Journal of Marketing*, Vol. 67, pp. 80-95.
- Selviaridis, K., Spring, M., Projillidis, V., Botzoris, G. (2008), "Benefits, risks, selection criteria and success factors for third-party logistics services", *Maritime Economics and Logistics*, Vol. 10, pp. 380-392.
- Sletmo, G. K. (1989), "Shipping's Fourth Wave: Ship Management and Vernon's trade cycles", *Maritime Policy and Management*, Vol. 16, No. 4, pp. 293-303.
- Stank, T., Goldsby, T., Vivkeree, S. and Savitskie, K. (2003), "Logistics service performance. Estimating its influence on market share", *Journal of Business Logistics*, Vol. 24, pp. 27-55.
- Stopford, M. (2009), *Maritime economics*, 3<sup>rd</sup> Edition, Routledge.
- Tompkins, J.A. (2006), "The business imperative of outsourcing", *Industrial Management*, January/February, pp. 8-12.
- UNCTAD, (2009), *Review of Maritime Transport*, United Nation, New York and Geneva.
- Willingale, M. (1998), *Ship Management*, Third Edition, Lloyd List Press.

**Figure 1. Top 12 ship management companies managing more than 100 vessels (2009)\***



\* Reconstituted from the Lloyd's Register Fairplay database.

**1. Schulte** (Schulte BSM Singapore; Schulte Shipmanagement-BER; Schulte Shipmanagement-CHR; Schulte Shipmanagement-CYP; Schulte Shipmanagement-GRC; Schulte Shipmanagement-HKG; Schulte Shipmanagement-IND; Schulte Shipmanagement-IOM; Schulte Shipmanagement-UK; Schulte-Hamburg 20095)

**2. V Ships** (V Ships Argentina; V Ships Asia Pte Ltd; V Ships Boston; V Ships Brasil SA; V Ships Canada Inc; V Ships France SAS; V Ships Germany; V Ships Leisure SAM; V Ships Leisure UK Ltd; V Ships Ltd; V Ships Monaco SAM; V Ships Norway AS; V Ships Santos; V Ships Switzerland SA; V Ships UK Ltd; V Ships USA Inc; V Ships USA LLC)

**3. Anglo-Eastern** (Anglo-Eastern Antwerp NV; Anglo-Eastern Germany GmbH; Anglo-Eastern India; Anglo-Eastern Montreal; Anglo-Eastern Ship Management; Anglo-Eastern Shipmgmt S Pte; Anglo-Eastern UK Ltd)

**4. Tanker International** (Euronav Ship Mgmt Hellas Ltd; Euronav Ship Mgmt SAS; Korea Line Corp; Norddeutsche Reederei Schuld; OSG Ship Management GR Ltd; OSG Ship Management Inc; OSG Ship Management UK Ltd; Oldendorff Carriers GmbH & Co; Oldendorff E; Oldendorff KE Ltd)

**5. Jepsen Group** (AJ Ship Management GmbH; Aboitz Jepsen Bulk Transport; EMS Ship Management Denmark AS; EMS Ship Management India; EMS Ship Management Singapore; Ems; Ems-Fracht; Jepsen Skipsrederi KG)

**6. NYK Management** (NYK Cruises Co Ltd; NYK LNG Shipmanagement Ltd; NYK LNG UK; NYK Shipmanagement Pte Ltd)

**7. Colombia** (Columbia Shipmanagement Ltd; Columbia Shipmgmt Deutschland; Columbia Shipmgmt Singapore)

**8. Fleet Management** (Fleet Management Europe Ltd; Fleet Management India Pvt Ltd; Fleet Management Ltd-HKG; Fleet Management Pvt Ltd; Fleet Ship Management Pte Ltd)

**9. Thome** (Thome Offshore Management; Thome Ship Management Pte Ltd)

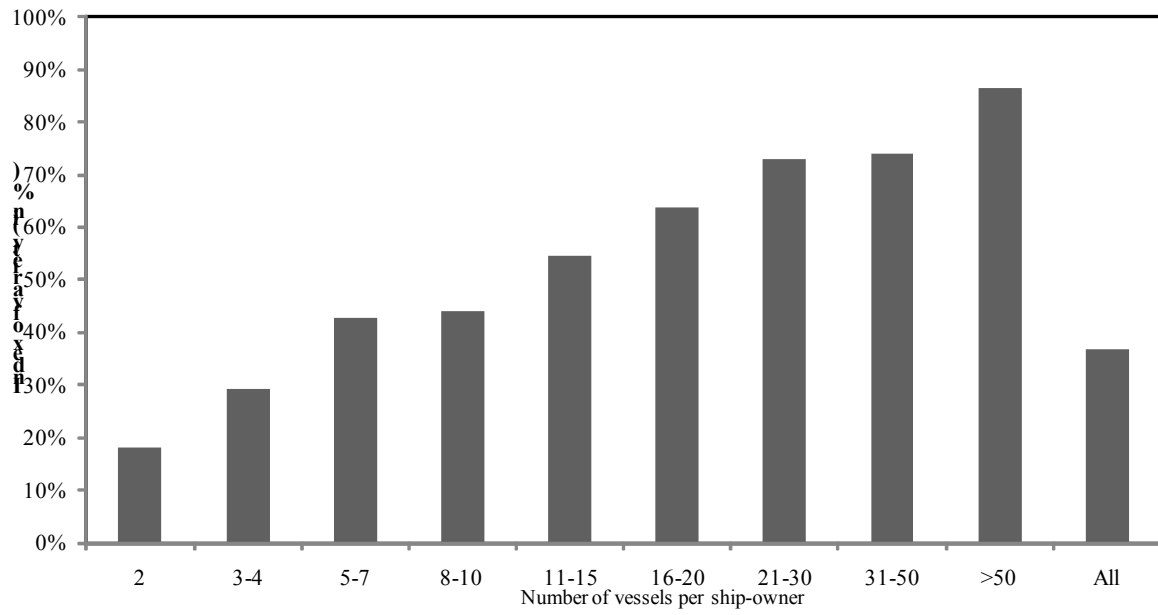
**10. Cosco HK Shipping Co. Ltd**

**11. Wilhelmsen** (Wilhelmsen Marine Services AS; Wilhelmsen Ship Management AS; Wilhelmsen Ship Mgmt Korea Ltd; Wilhelmsen Ship Mgmt Ltd-USA; Wilhelmsen Ship Mgmt Sdn Bhd; Wilhelmsen Ship Mgmt Singapore)

**12. China shipping development**

Source: Authors' calculation based on Lloyd's Register Fairplay – World Shipping Encyclopaedia (June 2009)

**Figure 2. Variety and fleet size (2009)**

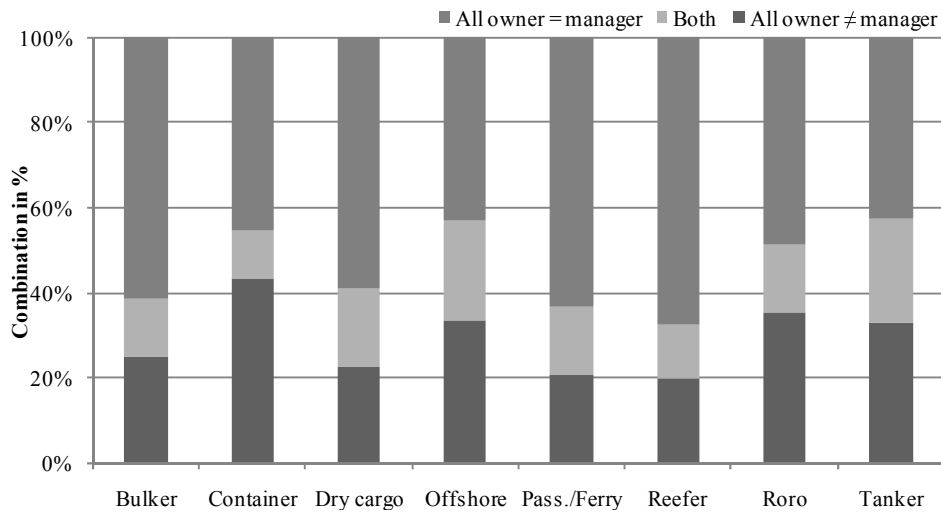


Source: Author's calculation from Lloyd's Register Fairplay – World Shipping Encyclopaedia (June 2009)

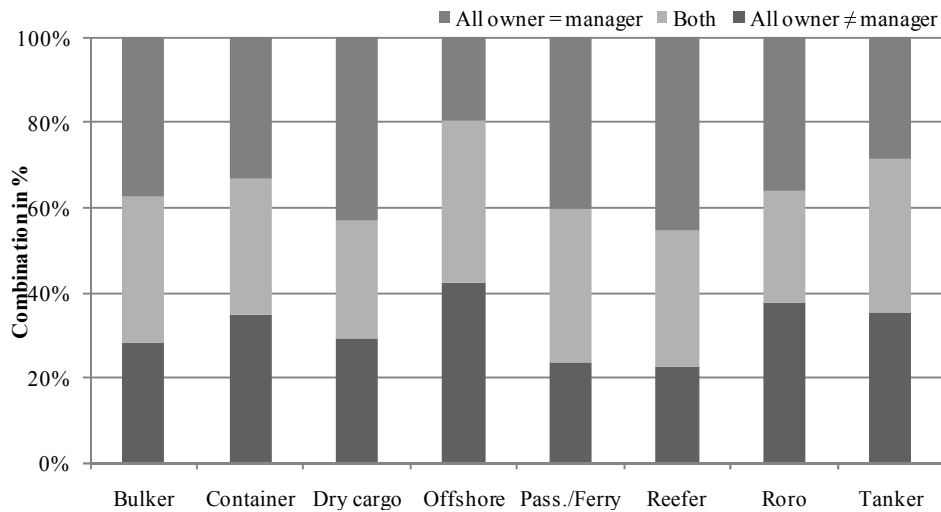
Note: Our index of variety is defined as the probability of an owner having at least two different types of vessel.

**Figure 3. Outsourcing level by type and variety of vessel**

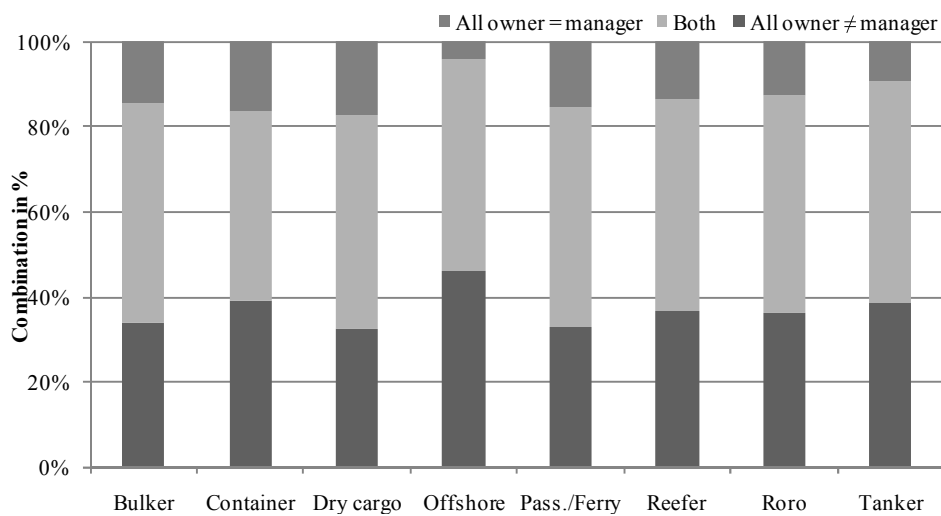
*A. One type of vessel in owner's fleet*



*B. Two types of vessels in owner's fleet*



*C. More than three types of vessels in owner's fleet*



Source: Authors calculation from Lloyd's Register Fairplay – World Shipping Encyclopaedia (June 2009)

**Table 1. Description of the sample**

Fleet (number of vessels)	Ship-owners (%)	Vessels (%)
2	30.4	6.2
3-4	25.3	8.7
5-7	16.8	9.8
8-10	7.2	6.4
11-15	7.3	9.4
16-20	3.8	6.8
21-30	3.7	9.3
31-50	2.7	10.7
50+	2.7	32.8
Total number	4,049	39,925

Source: Authors' calculations based on Lloyd's Register Fairplay – World Shipping Encyclopaedia (June 2009)

**Table 2. Outsourcing level by owner (N=4,049)\***

Variables		All vessels : owner ≠ manager	All vessels: owner = manager	Distribution (in %)
Owner's country	Japan	31.7	30.4	7.6
	Germany	43.3	32.8	6.1
	China	23.2	42.1	2.4
	Greece	11.3	62.9	7.2
	US	45.0	31.8	3.7
	Norway	50.3	25.4	4.3
	Russia	14.0	63.1	5.5
	Turkey	16.2	56.8	5.7
	Korea (South)	19.0	50.3	3.8
	Singapore	42.7	30.9	2.7
	Panama	33.3	40.0	1.9
	Indonesia	3.8	78.3	3.9
	United Kingdom	61.4	15.9	2.2
	Hong Kong	37.5	37.5	2.4
	Netherlands	42.2	33.7	2.1
	Italy	37.1	40.2	2.4
	Denmark	40.3	27.4	1.5
Others	29.2	47.4	34.9	
Owner's size	2 vessels	28.6	60.0	30.4
	3-4 vessels	26.8	54.1	25.3
	5-7 vessels	28.4	43.2	16.8
	8-10 vessels	28.2	34.4	7.2
	11-15 vessels	32.5	26.8	7.3
	16-20 vessels	38.3	14.3	3.8
	21-30 vessels	31.8	17.6	3.7
	31-50 vessels	47.8	7.2	2.7
More than 50 vessels	27.4	6.0	2.9	
Mean size (number of vessels)		10	5	
All owners		29.3	45.1	100

\* The row proportion for all vessels comprises the remainder, i.e., cases when only the management of some vessels is outsourced.

Source: Authors' calculations based on Lloyd's Register Fairplay – World Shipping Encyclopaedia (June 2009)

**Table 3. Outsourcing level by fleet size and variety (N=4,049 owners)\***

Owner's size	Variety: number of types of vessel (per owner)	All vessels: owner ≠ manager	All vessels: owner = manager
2 vessels	1	27.9	62.0
	2	32.1	50.7
3-4 vessels	1	25.5	57.9
	2	28.8	48.2
	3	33.9	30.4
5-7 vessels	1	25.7	49.6
	2	33.5	37.1
	≥3	27.5	26.1
8-10 vessels	1	28.2	45.4
	2	25.9	25.9
	≥3	32.6	9.3
11-15 vessels	1	29.9	30.6
	2	34.4	30.0
	≥3	35.2	15.5
16-20 vessels	1	33.9	23.2
	2	38.3	8.3
	≥3	44.7	10.5
21-30 vessels	1	32.5	22.5
	2	28.6	15.9
	≥3	35.6	15.6
31-50 vessels	1	51.7	10.3
	2	38.5	11.5
	≥3	50.0	3.6
More than 50 vessels	1	6.3	6.3
	2	28.1	9.4
	≥3	31.9	4.4
All owners	1	27.3	53.9
	2	31.5	36.6
	≥3	35.8	14.8

\* The row proportion for all vessels comprises the remainder, i.e., cases when only the management of some vessels is outsourced.

Source: Authors' calculations based on Lloyd's Register Fairplay – World Shipping Encyclopaedia (June 2009)

**Table 4. Outsourcing MNL estimates**  
**(Reference category: owner = manager for all vessels)**

Variables		All vessels: owner ≠ manager		Both types: owner = manager owner ≠ manager	
		coef.	t-value	coef.	t-value
Constant		-0.792***	-9.38	-1.865***	-16.76
Owner's country	Japan	0.431***	2.68	0.742***	4.45
	Germany	0.546***	3.27	-0.167	-0.83
	China	-0.147	-0.53	0.414	1.50
	Greece	-1.307***	-6.44	-0.364**	-2.16
	US	0.803***	3.93	0.205	0.82
	Norway	1.021***	5.07	0.340	1.41
	Russia	-0.931***	-4.41	-0.112	-0.58
	Turkey	-0.693***	-3.49	0.233	1.29
	Korea (South)	-0.515**	-2.23	0.194	0.91
	Singapore	0.808***	3.39	0.447	1.60
	Panama	0.367	1.30	0.544*	1.75
	Indonesia	-2.582***	-6.06	-0.773***	-3.19
	United Kingdom	1.737***	5.58	0.746**	2.04
	Hong Kong	0.404	1.63	0.288	0.99
	Netherlands	0.730***	2.75	0.232	0.72
	Italy	0.329	1.34	-0.087	-0.29
	Denmark	0.899***	2.75	0.818**	2.28
Others	Ref		Ref		
Owner's size	2 vessels	Ref		Ref	
	3-4 vessels	-0.041	-0.39	0.541***	4.27
	5-7 vessels	0.077	0.63	1.085***	8.01
	8-10 vessels	0.196	1.14	1.553***	9.01
	11-15 vessels	0.635***	3.62	1.864***	10.47
	16-20 vessels	1.250***	4.62	2.585***	9.66
	21-30 vessels	0.841***	3.17	2.377***	9.34
	31-50 vessels	2.322***	5.84	3.219***	8.07
More than 50 vessels	1.660***	3.82	3.656***	8.84	
Variety (at least two types of vessels)		0.532***	5.88	0.661***	7.06
Number of owners		4049			
Log likelihood		-3789.4			

Source: Authors' calculations based on Lloyd's Register Fairplay – World Shipping Encyclopaedia (June 2009)

Note: Estimates from an MNL logit model. Significance levels are 1% (\*\*\*) , 5% (\*\*) and 10% (\*).

**Table 5. Estimates of the probability of a vessel having the same owner and manager**

Variables		(1) Random effects probit		(2) Fixed effects logit	
		coef.	t-value	coef.	t-value
Constant		1.626***	11.07		
Age	0-4	Ref		Ref	
	5-9	-0.139***	-3.71	-0.188***	-2.85
	10-14	-0.173***	-4.41	-0.230***	-3.28
	15-19	-0.238***	-5.15	-0.355***	-4.31
	20-24	-0.318***	-6.42	-0.531***	-5.95
	25-29	-0.183***	-3.90	-0.290***	-3.38
	30-34	-0.083	-1.51	-0.105	-1.04
	35 and more	0.319***	5.02	0.567***	4.66
Size (gt)	1000-4999	Ref		Ref	
	5000-9999	-0.036	-0.84	0.060	0.78
	10000-24999	-0.073	-1.58	0.019	0.23
	25000-49999	-0.104**	-1.98	-0.047	-0.49
	More than 50000	0.143**	2.51	0.427***	4.13
Type of ship	Bulker / combination	Ref		Ref	
	Container	-0.011	-0.20	-0.017	-0.18
	Dry cargo	-0.128**	-2.43	-0.249**	-2.56
	Offshore	-0.543***	-6.22	-0.886***	-5.53
	Pass./Ferry	0.153	1.60	0.163	0.86
	Reefer	0.363***	3.27	0.634***	2.91
	Roro	0.128*	1.86	0.262**	2.08
	Tanker	-0.397***	-8.27	-0.666***	-7.53
Owner's country	Japan	-0.547**	-2.33		
	Germany	-0.835***	-3.15		
	China	0.159	0.44		
	Greece	1.860***	8.51		
	US	-1.457***	-4.68		
	Norway	-1.712***	-6.43		
	Russia	1.151***	4.79		
	Turkey	0.912***	3.66		
	Korea (South)	0.928***	3.23		
	Singapore	-1.037***	-2.89		
	Panama	-0.400	-0.87		
	Indonesia	2.859***	9.08		
	United Kingdom	-2.726***	-8.46		
	Hong Kong	-0.530	-1.41		
	Netherlands	-1.163***	-2.83		
	Italy	-0.509	-1.20		
	Denmark	-1.167***	-3.23		
	Others	Ref			
Owner's size	2 vessels	Ref			
	3-4 vessels	0.073	0.47		
	5-7 vessels	-0.110	-0.61		
	8-10 vessels	-0.281	-1.07		
	11-15 vessels	-0.967***	-3.40		
	16-20 vessels	-1.447***	-4.72		
	21-30 vessels	-1.212***	-3.93		
	31-50 vessels	-2.684***	-9.37		
	More than 50 vessels	-1.508***	-5.70		
Variety (more than 2 types in fleet)		-0.969***	-7.21		
Number of vessels			39925		19485
Number of owners			4049		1034
Log likelihood			-12544.2		-6804.5

Source: Authors' calculations based on Lloyd's Register Fairplay – World Shipping Encyclopaedia (June 2009)

Note: Estimates from random effect probit models. Significance levels are 1% (\*\*\*), 5% (\*\*) and 10% (\*).