



**HAL**  
open science

## **Novel TSHR mutations in consanguineous families with congenital non-goitrous hypothyroidism**

Hakan Cangul, Neil V Morgan, Julia R Forman, Halil Saglam, Zehra Aycan, Tahsin Yakut, Tuna Gulden, Omer Tarim, Ece Bober, Yasar Cesur, et al.

► **To cite this version:**

Hakan Cangul, Neil V Morgan, Julia R Forman, Halil Saglam, Zehra Aycan, et al.. Novel TSHR mutations in consanguineous families with congenital non-goitrous hypothyroidism. *Clinical Endocrinology*, 2010, 73 (5), pp.671. 10.1111/j.1365-2265.2010.03849.x . hal-00583581

**HAL Id: hal-00583581**

**<https://hal.science/hal-00583581v1>**

Submitted on 6 Apr 2011

**HAL** is a multi-disciplinary open access archive for the deposit and dissemination of scientific research documents, whether they are published or not. The documents may come from teaching and research institutions in France or abroad, or from public or private research centers.

L'archive ouverte pluridisciplinaire **HAL**, est destinée au dépôt et à la diffusion de documents scientifiques de niveau recherche, publiés ou non, émanant des établissements d'enseignement et de recherche français ou étrangers, des laboratoires publics ou privés.

## Novel TSHR mutations in consanguineous families with congenital non-goitrous hypothyroidism

Journal:	<i>Clinical Endocrinology</i>
Manuscript ID:	CEN-2010-000238.R2
Manuscript Type/Office:	1 Original Article - UK/Europe
Date Submitted by the Author:	02-Jul-2010
Complete List of Authors:	<p>Cangul, Hakan; University of Birmingham, School of Clinical and Experimental Medicine, Medical &amp; Molecular Genetics  Morgan, Neil V; University of Birmingham, School of Clinical and Experimental Medicine, Medical &amp; Molecular Genetics  Forman, Julia R; Institut Pasteur, Structural Bioinformatics Unit  Saglam, Halil; Uludag University School of Medicine, Department of Paediatric Endocrinology  Aycan, Zehra; Dr Sami Ulus Woman Health, Children Research Hospital, Division of Paediatric Endocrinology  Yakut, Tahsin; Uludag University School of Medicine, Department of Medical Genetics  Gulten, Tuna; Uludag University School of Medicine, Department of Medical Genetics  Tarim, Omer; Uludag University School of Medicine, Department of Paediatric Endocrinology  Bober, Ece; Dokuz Eylül University, Faculty of Medicine, Department of Paediatrics, Division of Endocrinology  CESUR, Yasar; Faculty of Medicine ,Yüzüncü Yil University, Departments of Pediatric Endocrinology  Kirby, Gail A; University of Birmingham, School of Clinical and Experimental Medicine, Medical &amp; Molecular Genetics  Pasha, Shanaz; University of Birmingham, School of Clinical and Experimental Medicine, Medical &amp; Molecular Genetics  Karkucak, Mutlu; Uludag University School of Medicine, Department of Medical Genetics  Eren, Erdal; Uludag University School of Medicine, Department of Paediatric Endocrinology  Bas, Veysel; Dr Sami Ulus Woman Health, Children Research Hospital, Division of Paediatric Endocrinology  Demir, Korcan; Dokuz Eylül University, Faculty of Medicine, Department of Paediatrics, Division of Endocrinology</p>
Key Words:	congenital hypothyroidism, consanguineous, mutation, TSHR, gene mapping

1  
2  
3  
4  
5  
6  
7  
8  
9  
10  
11  
12  
13  
14  
15  
16  
17  
18  
19  
20  
21  
22  
23  
24  
25  
26  
27  
28  
29  
30  
31  
32  
33  
34  
35  
36  
37  
38  
39  
40  
41  
42  
43  
44  
45  
46  
47  
48  
49  
50  
51  
52  
53  
54  
55  
56  
57  
58  
59  
60



For Peer Review

1  
2  
3 **Novel *TSHR* mutations in consanguineous families with congenital non-goitrous**  
4 **hypothyroidism**  
5  
6

7  
8 Short title: Novel *TSHR* mutations in congenital hypothyroidism  
9

10 Hakan Cangul<sup>1,2</sup>, Neil V Morgan<sup>1</sup>, Julia R Forman<sup>3</sup>, Halil Saglam<sup>4</sup>, Zehra Aycan<sup>5</sup>,  
11  
12 Tahsin Yakut<sup>2</sup>, Tuna Gulden<sup>2</sup>, Omer Tarim<sup>4</sup>, Ece Bober<sup>6</sup>, Yasar Cesur<sup>7</sup>, Gail A Kirby<sup>1</sup>,  
13  
14 Shanaz Pasha<sup>1</sup>, Mutlu Karkucak<sup>2</sup>, Erdal Eren<sup>4</sup>, Semra Cetinkaya<sup>5</sup>, Veysel Bas<sup>5</sup>, Korcan  
15  
16 Demir<sup>6</sup>, Sevil A Yuca<sup>7</sup>, Esther Meyer<sup>1</sup>, Michaela Kendall<sup>8</sup>, Wolfgang Hogler<sup>9</sup>, Timothy  
17  
18 G Barrett<sup>1,9</sup>, Eamonn R Maher<sup>1</sup>  
19  
20  
21

22 <sup>1</sup> Department of Medical and Molecular Genetics, School of Clinical and  
23  
24 Experimental Medicine, University of Birmingham, Birmingham B15 2TT, UK  
25  
26

27  
28 <sup>2</sup> Department of Medical Genetics, School of Medicine, Uludag University, Bursa  
29  
30 16059, Turkey  
31  
32

33  
34 <sup>3</sup> Institut Pasteur, Structural Bioinformatics Unit, 75015 Paris, France  
35  
36

37  
38 <sup>4</sup> Department of Paediatric Endocrinology, School of Medicine, Uludag University,  
39  
40 Bursa 16059, Turkey  
41  
42

43  
44 <sup>5</sup> Division of Paediatric Endocrinology, Dr Sami Ulus Woman Health, Children  
45  
46 Research Hospital, Ankara, Turkey  
47  
48

49  
50 <sup>6</sup> Division of Endocrinology, Department of Paediatrics, Faculty of Medicine, Dokuz  
51  
52 Eylül University, Izmir, Turkey.  
53  
54

55  
56 <sup>7</sup> Division of Paediatric Endocrinology, Faculty of Medicine, Yuzuncu Yil University,  
57  
58 Van, Turkey  
59  
60

1  
2  
3 8 Department of Public Health, School of Medicine, Uludag University, Bursa 16059,  
4  
5 Turkey  
6  
7

8  
9 9 Department of Endocrinology and Diabetes, Birmingham Children's Hospital,  
10  
11 Birmingham, UK  
12  
13

### 14 15 **Correspondence:**

16  
17 Dr Hakan Cangul

18  
19 Department of Medical and Molecular Genetics

20  
21 School of Clinical and Experimental Medicine

22  
23 University of Birmingham

24  
25 Birmingham B15 2TT United Kingdom

26  
27 E-mail: [h.cangul@bham.ac.uk](mailto:h.cangul@bham.ac.uk)

28  
29 Fax: +44 (0) 121 6272618  
30  
31  
32  
33  
34  
35

36 Key words: TSHR, congenital hypothyroidism, consanguineous, gene mapping, mutation  
37  
38  
39

### 40 41 **Acknowledgments**

42  
43 We thank NewLife, WellChild and the Wellcome Trust for financial support. HC was  
44  
45 partly supported by European Union under its Framework 7 programme, FP7-PEOPLE-  
46  
47 2009-Marie Curie IEF. JRF was sponsored in part by a grant from the Pasteur Foundation  
48  
49 of New York. We also thank families for their help with this research. Authors declared  
50  
51 no conflicting interests.  
52  
53  
54  
55  
56

57  
58 Word count: 3,457  
59  
60

## ABSTRACT

**Objective:** Non-syndromic autosomal recessively inherited non-goitrous congenital hypothyroidism (CHNG) can be caused by mutations in *TSHR*, *PAX8*, *TSHB*, and *NKX2-5*. We aimed to investigate mutational frequencies of these genes and genotype/phenotype correlations in consanguineous families with CHNG.

**Design:** Since consanguinity in individuals with a presumptive genetic condition is often an indicator of an autosomal recessive inheritance and allows firmer correlations to be established between genotype and phenotype, we planned to execute our study in consanguineous families.

**Patients:** 139 children with CHNG phenotype born to consanguineous families.

**Measurements:** First we investigated cases for evidence of linkage to the four known-CHNG genes by microsatellite marker analysis. Mutation analysis by direct sequencing was then performed in those cases in whom linkage to the relevant candidate gene could not be excluded. In addition *in silico* analysis of the predicted structural effects of *TSHR* mutations was performed and related to the mutation specific disease phenotype.

**Results:** Homozygous germline *TSHR* mutations were detected in 6 families (5%), but no mutations were detected in *PAX8*, *TSHB*, and *NKX2-5*. Four of *TSHR* mutations had not previously been described. Genotype-phenotype correlations were established and found to be related to the predicted structural effects of the mutations.

**Conclusions:** Known-causative genes account for the development of CHNG only in a minority of cases and our cohort should provide a powerful resource to identify novel causative genes and to delineate the extent of locus heterogeneity in autosomal recessively inherited CHNG.

## INTRODUCTION

Congenital hypothyroidism (CH) is the most common neonatal metabolic disorder with an incidence of 1 in 3000 to 4000 live births and, if untreated, results in severe neuro-developmental impairment and infertility. Worldwide the most frequent cause of hypothyroidism, including congenital forms, is iodine deficiency. However, particularly in areas where dietary iodine is adequate, developmental defects of the hypothalamic-pituitary-thyroid axis are the main important cause of CH. Thus CH is most often caused by defects in thyroid development leading to thyroid dysgenesis (85%) [which can be subdivided into thyroid agenesis (40% of all cases), failure of the gland to descend normally during embryological development with or without ectopy (40%), or hypoplasia of a eutopic gland] and the remaining cases are associated with either goitre or a normal thyroid gland. Rarely, central (secondary/tertiary) hypothyroidism may be caused by pituitary or hypothalamic disease leading to deficiency of thyrotropin (TSH) or thyrotropin releasing hormone (TRH), respectively<sup>1,2</sup>.

In this study we focused on primary non-goitrous congenital hypothyroidism (CHNG) likely to be caused by single gene defects. Therefore we executed our study in consanguineous families in whom recessive gene defects are the most likely cause for the development of the disease. In OMIM database four clinical entries with known genetic causes, CHNG 1, 2, 4, and 5, have been described to date (MIM numbers 275200, 218700, 275100, and 225250 respectively). The causative genes for these are respectively *TSHR*, *PAX8*, *TSHB*, and *NKX2-5*. There is one additional locus on

1  
2  
3 chromosome 15q25.3 causing CHNG 3 for which the causative gene is yet to be  
4  
5 identified.  
6  
7  
8  
9

10 The presence of parental consanguinity in individuals with a presumptive genetic  
11 condition is often an indicator of an autosomal recessive inheritance. In consanguineous  
12 families with autosomal recessively inherited disorders there is a high likelihood of  
13 mutation homozygosity (both parents having inherited the same mutation from a common  
14 ancestor) and so autozygosity mapping can provide a powerful strategy to map regions  
15 containing a disease gene. Conversely, candidate genes that are not contained within an  
16 autozygous segment are unlikely to cause the relevant disorder. We have ascertained a  
17 large cohort of consanguineous families (n=120) with non-goitrous congenital  
18 hypothyroidism (CHNG) and have undertaken genetic mapping and mutation analysis  
19 studies for four candidate genes (*TSHR*, *PAX8*, *TSHB*, and *NKX2-5*). We identified four  
20 novel and two previously reported *TSHR* mutations but most cases were not linked to any  
21 known CHNG genes.  
22  
23  
24  
25  
26  
27  
28  
29  
30  
31  
32  
33  
34  
35  
36  
37  
38  
39  
40  
41  
42  
43  
44  
45  
46  
47  
48  
49  
50  
51  
52  
53  
54  
55  
56  
57  
58  
59  
60



## MATERIALS AND METHODS

### Subjects

We collected blood samples from a total of 139 cases from 120 consanguineous families with primary non-syndromic CH without evidence of goitre or auto-immune thyroid disease. Families in which autosomal dominant inheritance was suspected, with at least one parent affected, were excluded from the study. Cases with clear evidence of central hypothyroidism were also excluded and almost all cases had elevated TSH levels at the time of diagnosis (range between 33 and 1578 mIU/L), levels for some cases not being available. Tissue scans showed a spectrum of thyroid morphologies ranging from agenesis to normal sized gland but none of the cases had enlarged gland at the time of diagnosis. 40 consanguineous families were recruited through the West Midlands Regional Clinical Genetics Service in Birmingham, UK. Most of these families were originated from the Mirpur region of Pakistan in whom CH occurs at an unusually high rate (1:770 live births). In addition 80 consanguineous Turkish families with CHNG were ascertained through four large clinical centres in Turkey where consanguinity rates are high. All families gave informed consent and the study was approved by local ethics committees. This study was conducted according to the principles stated in the Declaration of Helsinki. DNA was extracted by using standard methods and stored at -20°C until analysed.

### Microsatellite marker analysis

Initially cases were genotyped by using microsatellite markers (short tandem repeats-STRs) that closely flank the existing loci for CHNG (see Table 1). **Even though we**

1  
2  
3 **excluded the cases with clear evidence of central hypothyroidism, *TSHB* locus was**  
4 **still included in the analyses since hormone levels were not available for some cases,**  
5 **and also since some *TSHB* mutations can completely abolish the bioactivity but**  
6 **resulting mutant molecule can still form heterodimer with the alpha-subunit and**  
7 **preserve immunoreactivity in some TSH measurement methods. Therefore variable**  
8 **TSH levels could be detected in patients with *TSHB* mutations depending on the**  
9 **method used.** In families with two or more affected siblings, microsatellite marker  
10 analyses of all family members were carried out to observe the segregation of conserved  
11 haplotypes. Standard polymorphic microsatellite markers (UniSTS;  
12 <http://www.ncbi.nlm.nih.gov>) were used for each of the causative loci investigated.  
13  
14 Overall genotypes for 24 markers were determined for each patient, including eight  
15 markers for the CHNG3 locus. Table 1 shows the details of the causative genes examined  
16 and the markers used for each locus. One oligonucleotide of each primer pair was  
17 fluorescently labelled (5' HEX or TET or FAM) and genomic DNA samples at a  
18 concentration of 20ng/μl were amplified by using these primers in a Tetrad2 PCR  
19 machine (Bio-Rad, USA). Fluorescently-labelled PCR products then were loaded onto  
20 ABI 3730 DNA capillary electrophoresis machine in a 96-well plate format and  
21 subsequent data was analysed with the use of ABI Prism GeneMapper™ v3.0 software  
22 suite. The haplotypes, i.e. set of closely linked alleles inherited as a unit, were deduced  
23 for all patients. When an affected individual was homozygous for the haplotypes closely  
24 surrounding a region where a disease gene is located, i.e. both haplotypes derived from  
25 the two homologous chromosomes are identical, this was taken as suggestive of linkage  
26 whereas heterozygosity was considered as the proof of no-linkage.  
27  
28  
29  
30  
31  
32  
33  
34  
35  
36  
37  
38  
39  
40  
41  
42  
43  
44  
45  
46  
47  
48  
49  
50  
51  
52  
53  
54  
55  
56  
57  
58  
59  
60

### **Mutation analysis of the known-causative genes in cases with positive linkage**

In families with potential linkage to a known-CHNG gene (*TSHR*, *PAX8*, *TSHB*, and *NKX2-5*) we then proceeded to perform mutation analysis of the relevant gene by direct sequencing. Each gene was investigated by sequencing of all exons and intron-exon boundaries on an ABI Prism 3730 DNA Analyzer, using the ABI BigDye Terminator v3.1 Cycle Sequencing kits. Primer pairs were designed for exon-specific PCR amplification of all exons of four causative genes. At the purification stage, amplified products were either treated with microCLEAN (Microzone Ltd) or gel-extracted (Qiagen). DNA sequences were viewed and analysed using Chromas software.

### **RT-PCR**

In one family a homozygous germline *TSHR* exon 2 deletion was suspected, and we proceeded to investigate the status of the *TSHR* transcript between exons 1 and 3. Thus we extracted RNA from all family members, synthesized their cDNA, and performed PCR and sequencing reactions with primers covering the region between the end of exon 1 and the beginning of exon 3. Total RNA was extracted from lymphocytes using the RNeasy Mini Kit (Qiagen), and then cDNA was synthesized using random primers and AMV reverse transcriptase using the Promega reverse transcription system A3500 according to manufacturers' instructions (Promega). The primers used for RT-PCR and sequencing reactions were: *TSHR\_1\_FOR* (5'-GAGAAATAGCCCCGAGTCCC-3') and *TSHR\_3\_REV* (5'-GAGTCACTTTACTCAAATTG-3').

### Structural prediction model for missense mutations

To analyse the likely structural effects of the missense mutations identified in this work, we considered their evolutionary conservation, as illustrated by a multiple alignment of the top 50 Blast hits (performed using the Uniprot server). We also examined potential intermolecular interactions, to determine if they would be disrupted upon mutation.

TSHR is a G-coupled receptor with 764 amino acids, comprised of a large, extracellular leucine-rich repeat domain which binds the hormone, and a transmembrane domain with seven helices. Sanders et al.<sup>3</sup> solved the crystal structure of the extracellular domain, residues 1-213, in complex with a thyroid-stimulating antibody (PDB code 3G04). The transmembrane domain structure is not known, however the bovine rhodopsin structure (e.g. PDB code 1GZM<sup>4</sup>) provides a suitable template for analysis or homology modelling (based on GRIS<sup>5</sup> and swissmodel.expasy.org<sup>6</sup>). In addition, given the sequence similarity between TSHR and FSHR, the structure of the FSH/FSHR complex (PDB code 1XWD<sup>7</sup>) suggests the most likely binding site of TSH with TSHR. Also, there is evidence that TSHR functions as a homodimer. To consider the structural effects on dimerisation, we analysed the dimer contacts of a published model of dimeric bovine rhodopsin (1N3M<sup>8</sup>). Finally, individual missense mutations may destabilise a protein domain, even to the extent of preventing folding. To consider this effect, we predicted quantitative stability changes ( $\Delta\Delta G_{D-N}$ ) with the software tool SDM<sup>9</sup> (<http://mordred.bioc.cam.ac.uk/~sdm/sdm.php>).

## RESULTS

Genotyping with 16 microsatellite markers associated with the *TSHR*, *TSHB*, *PAX8* and *NKX2-5* genes (see Table 1) was performed in 139 individuals with CHNG (44 of Pakistani origin and 95 of Turkish origin). Heterozygosity of the disease genes was detected in 65 cases (13 of Pakistani origin and 52 of Turkish origin) from a total of 37 kindreds. Details of the number of affected individuals and genes for which linkage could not be excluded are shown in Table 2.

Direct sequencing of the *TSHR* gene was performed in 24 individuals from 16 kindreds in whom linkage to *TSHR* could not be excluded. Germline *TSHR* mutations were characterised in 6 kindreds (see Table 3). A homozygous G to A transition at codon 553 of the *TSHR* gene, causing substitution of an alanine residue by a threonine (A553T) was detected in two affected siblings from a family of Pakistani origin (B1). The parents and an unaffected sibling were heterozygous for this missense mutation confirming the segregation of the disease allele. Both affected children showed absent I<sup>133</sup> uptake in thyroid scintigraphy but had severely hypoplastic glands on ultrasonography at the time of diagnosis. Our studies showed that this mutation was significantly destabilising ( $\Delta\Delta G_{D-N} -2.7$ ) and that the Ala553 residue was conserved for 49 of the 50 sequences in our alignment.

A homozygous splice site mutation c.317+1G>A was identified in a Turkish family with two affected children (T1) and it segregated with disease status (both parents and an

1  
2  
3 unaffected sib were heterozygous). Both cases carrying this novel mutation had apparent  
4 thyroid aplasia on US scan.  
5  
6  
7  
8  
9

10 Three different homozygous missense mutations were detected in 3 Turkish families with  
11 a single affected individual (see Table 3). None of these 3 mutations were detected in 340  
12 ethnically matched control chromosomes and each segregated with disease status. Family  
13 T2 with a homozygous p.Pro556Arg mutation presented when the proband was 3 months  
14 old. At the time of diagnosis a TSH level of >100  $\mu\text{U/mL}$  (normal < 20  $\mu\text{U/mL}$ ) and a  
15 FT<sub>4</sub> level of 0,4 ng/dL (normal 0,8-1,9 ng/dL) were detected, and thyroid gland was not  
16 detected on scintigraphy or US scan. Even though treatment immediately started at the  
17 age of 3 months, the 11 year-old case now shows moderate mental retardation. At age 11  
18 years a US scan showed an apparently absent right thyroid lobe and a very hypoplastic  
19 left lobe. We note that the proline556 residue is conserved in all of the 50 sequences in  
20 our alignment and located at the end of a transmembrane helix.  
21  
22  
23  
24  
25  
26  
27  
28  
29  
30  
31  
32  
33  
34  
35  
36  
37  
38

39 Two of the mutations characterised in this study (p.Pro162Ala and p.Arg531Trp) were  
40 associated with a milder phenotype. The case from family T3 had the missense mutation  
41 p.Pro162Ala and was diagnosed with a moderately high TSH level (48  $\mu\text{U/mL}$ ) in  
42 neonatal screening and had normal thyroid scintigraphy and US scan with euthyroid  
43 hormone levels. Our structural predictions suggested that p.Pro162Ala would only cause  
44 a mild destabilisation ( $\Delta\Delta G_{D-N} -0.7$ ) in the receptor molecule and slightly disrupt ligand  
45 binding. The other mild missense mutation p.Arg531Trp was detected in family T4 and  
46 the case had a mildly elevated level of TSH (33,3 mIU/L), a normal level of FT<sub>4</sub> (1.3  
47  
48  
49  
50  
51  
52  
53  
54  
55  
56  
57  
58  
59  
60

1  
2  
3 ng/dL), and a thyroid gland of normal size and location in US scan at the time of  
4  
5 diagnosis. Our SDM predictions suggested that p.Arg531Trp mutation might slightly  
6  
7 disrupt the dimerisation of the receptor molecule.  
8  
9

10  
11  
12 In family T5 exon 2 of the *TSHR* gene failed to amplify in the two affected siblings.

13  
14 Analysis of the *TSHR* transcript by RT-PCR revealed two differently sized fragments in  
15  
16 the parents. In cDNA derived from blood of both affected children only the smaller  
17  
18 fragment (268 bp) was detected whereas both parents and an unaffected sibling also  
19  
20 expressed a larger (340 bp) fragment (which corresponded to the expected size).  
21  
22

23  
24 Sequencing confirmed that the 340 bp fragment contained exon 1, 2 and 3 sequence  
25  
26 whereas the 268 bp fragment did not include exon 2 (Figure 1). These findings were  
27  
28 consistent with a homozygous exon 2 deletion in the two affected children.  
29  
30

31  
32 Phenotypically, the older sibling had no activity in thyroid scintigraphy and a hypoplastic  
33  
34 gland on US scan but hormone levels at diagnosis were not available. The younger  
35  
36 sibling had a TSH level of 1578 mIU/L and a FT4 level of 0,16 ng/dL at the time of  
37  
38 diagnosis, and his US scan detected a very hypoplastic thyroid tissue.  
39  
40

41  
42  
43 No mutations were detected in the *TSHB*, *PAX8* and *NKX2-5* in the patients in whom  
44  
45 linkage to one or more of these genes could not be excluded.  
46  
47  
48  
49  
50  
51  
52  
53  
54  
55  
56  
57  
58  
59  
60

### Predicted structural consequences of missense mutations detected

SDM scores (for predicted effect on protein stability) for each of the missense mutations detected in this study are summarised in Table 4. Mutation Pro162Ala is predicted to be only mildly destabilising ( $\Delta\Delta G_{D-N} -0.7$ ). However, it is conserved in all of the TSHRs in our alignment. To consider its intermolecular interactions, we examined the interactions of the equivalent residue, Ile155, in the FSH/FSHR complex (PDB code 1XWD<sup>7</sup>, Figure 2). There are no known direct contacts, however it is in the local environment of the binding site so we predict it could slightly disrupt binding. The remaining missense mutations were found in three sites in the transmembrane domain. As the structure was not available, the stability predictions were made for the mutations at equivalent positions in bovine rhodopsin (PDB code 1GZM<sup>4</sup>; see Table 4 and Figure 3; equivalent positions were found using an alignment made using Uniprot<sup>10-11</sup> and the alignments could be seen in Supplements 1 and 2)

Residue Arg531 was conserved in all of the TSHRs in our alignment. Mutation Arg531Trp (Phe146 in bovine rhodopsin) is predicted to be slightly stabilising ( $\Delta\Delta G_{D-N} 1.3$ ), while Arg531Glu is predicted to be significantly destabilising ( $\Delta\Delta G_{D-N} -2.1$ ). The equivalent site in bovine rhodopsin, Phe146, is at the dimer interface, so these mutations may act by disrupting dimerisation. Residues Ala553 and Pro556 (Ala168 and Pro171 in bovine rhodopsin, respectively) are both buried, and therefore do not make any intermolecular contacts, however the bovine rhodopsin equivalent residues are found in one of the helices at the dimer interface (as modelled in 1N3M<sup>8</sup>). Ala553Thr (Ala168Thr in bovine rhodopsin) is predicted to be significantly destabilising ( $\Delta\Delta G_{D-N} -2.7$ ). In



1  
2  
3 addition, the alanine is conserved for 49 of the 50 sequences in our alignment (the only  
4  
5 exception is *Danio rerio* TSHR, with glycine in the equivalent position). Pro556Arg and  
6  
7 Pro556Leu (at the Pro171 site in bovine rhodopsin) are predicted by SDM to be neutral  
8  
9 and disease-associated mutations, respectively ( $\Delta\Delta G_{D-N}$  0.7 and 3.45). However, proline  
10  
11 is conserved at this site in all of the sequences in our alignment, and is found at the end of  
12  
13 a helix, suggesting it is structurally required at this site.  
14  
15  
16  
17  
18  
19  
20  
21  
22  
23  
24  
25  
26  
27  
28  
29  
30  
31  
32  
33  
34  
35  
36  
37  
38  
39  
40  
41  
42  
43  
44  
45  
46  
47  
48  
49  
50  
51  
52  
53  
54  
55  
56  
57  
58  
59  
60

For Peer Review

## DISCUSSION

Congenital hypothyroidism is the most common preventable cause of mental retardation. Therefore early and accurate diagnosis of the disease is of crucial importance for timely therapeutic intervention. In this study we performed linkage and mutation analysis of four known causative genes for CHNG (*TSHR*, *PAX8*, *TSHB*, and *NKX2-5*) in a large cohort of patients with CHNG phenotype from consanguineous families.

Individuals with autosomal recessively inherited disorders born into consanguineous families are most likely to be homozygous for a mutation inherited from a common parental ancestor. This observation is the basis for using an autozygosity mapping strategy to identify disease genes for recessively inherited disorders. Conversely the finding of heterozygosity at microsatellite markers flanking a disease gene makes it unlikely that the gene contains a mutation. In order to prioritise patients for gene sequencing we initially typed affected individuals for 16 microsatellite markers linked to the four disease genes. Whilst this might have excluded some patients who (despite being from consanguineous families) were compound heterozygotes or who harboured a homozygous mutation within a small region of autozygosity, such patients are likely to be infrequent. Mutation analysis demonstrated that 15% of the families with thyroid dysgenesis carried a *TSHR* mutation but no mutation was detected for the other three genes tested in our cohort. To our knowledge, we report the first large (exonic) deletion of *TSHR*. The exon 2 deletion is predicted to cause an in frame deletion (IFD) and skipping of exon 2 in the transcript. However this mutation would not have been detected if the probands had been heterozygous and our finding suggests that techniques that can

1  
2  
3 reliably detect heterozygous exonic deletions (e.g. MLPA) should have a role in *TSHR*  
4  
5 mutation testing.  
6  
7  
8  
9

10 As expected, all six consanguineous kindreds had homozygous *TSHR* mutations. The  
11 finding of homozygosity for a mutation facilitates the elucidation of genotype-phenotype  
12 correlations. The p.Ala553Thr missense mutation identified in family B1 was originally  
13 described in a consanguineous Moroccan family with two affected siblings in whom  
14 initial physical examination and <sup>99m</sup>Tc scintigraphy failed to demonstrate the presence of  
15 thyroid tissue (leading to an incorrect diagnosis of athyreosis) but subsequent  
16 ultrasonography (US) revealed the presence of a very hypoplastic thyroid tissue in normal  
17 position in both cases<sup>12</sup>. Similarly in our study this mutation was associated with a severe  
18 phenotype and our results indicated highly destabilising nature of this alteration and high  
19 degree of conservation of the altered residue. These results combined with the *in vitro*  
20 observations showing that the expression of the mutant protein in transfected cell lines<sup>12-</sup>  
21 <sup>17</sup> is associated with very low expression of the mutant protein at the cell surface, are  
22 consistent with the severe phenotype associated with this mutation. The novel  
23 c.317+1G>A splice site mutation was also associated with a very severe phenotype,  
24 indicating a deleterious effect of this alteration on the resulting receptor.  
25  
26  
27  
28  
29  
30  
31  
32  
33  
34  
35  
36  
37  
38  
39  
40  
41  
42  
43  
44  
45  
46  
47

48 The missense mutation p.Pro556Arg detected in family T2 was associated with a severe  
49 phenotype, suggesting a critical role for this residue in the structure of the molecule. Even  
50 though this change was not previously reported, another missense mutation at the same  
51 site (p.Pro556Leu) was characterised in severely hypothyroidic *hyt/hyt* mice and  
52  
53  
54  
55  
56  
57  
58  
59  
60

1  
2  
3 functional investigations showed that this substitution totally abolished TSH binding and  
4  
5 receptor function<sup>18</sup>. *In vitro* studies also revealed that p.Pro556Leu eliminated G protein-  
6  
7 coupled cAMP production and cAMP-responsive reporter gene expression. Overall these  
8  
9 data support the association of this mutation with the severe phenotype observed in our  
10  
11 patient.  
12  
13

14  
15  
16  
17 The missense mutation p.Pro162Ala associated with a mild phenotype in family T3  
18  
19 was previously described as a loss-of-function mutation and heterozygous carriers of this  
20  
21 mutation had mild resistance to TSH manifesting as euthyroidism with slight  
22  
23 hyperthyrotropinemia<sup>19-21</sup>. There have been only a few previous reports of homozygous  
24  
25 individuals for this mutation and all four cases coming from three different  
26  
27 consanguineous families had moderately elevated TSH levels (< 100  $\mu$ U/mL) with  
28  
29 normal thyroid radioiodine scan and FT<sub>4</sub> levels at normal range<sup>22-24</sup>. Similar phenotypic  
30  
31 features of our case provide further evidence for the association of this mutation with a  
32  
33 moderate TSH resistance. The other mild missense mutation detected in family T4,  
34  
35 p.Arg531Trp, is the first naturally occurring homozygous mutation reported to date at this  
36  
37 site. An alternative missense substitution at the same residue was investigated previously  
38  
39 in an *in vitro* functional study<sup>25</sup> and Feng et al. identified a motif in the second  
40  
41 intracellular loop (IL2) of the TSHR molecule involving R531 as a potential G<sub>s</sub>-coupling  
42  
43 motif. They found that substitution of arginine residue with a glutamine (p.Arg531Glu)  
44  
45 resulted in a significant decrease in the basal activity of the receptor but had very little or  
46  
47 no effect on the hormone-stimulated cAMP production, and further studies showed that  
48  
49 this mutation was structurally conservative. The clinical features observed in our patient  
50  
51  
52  
53  
54  
55  
56  
57  
58  
59  
60

1  
2  
3 are consistent with mild TSH resistance and might be attributed to a slight structural  
4  
5 change and/or reduced basal activity of the receptor brought about with the mutation.  
6  
7  
8  
9

10 The severe phenotype associated with exon 2 deletion in family T5 might be explained by  
11  
12 the fact that this exon encodes an amino terminal extracellular ligand binding domain of  
13  
14 the receptor molecule. Our literature review suggested that homozygous LOF point  
15  
16 mutations at the sites encoding the extracellular domain (ECD) of the molecule generally  
17  
18 caused mild phenotypes whereas homozygous LOF point mutations in the  
19  
20 transmembrane domain were rather associated with severe phenotypes. However our  
21  
22 results implicate that gross alterations in the ECD might also severely affect the function  
23  
24 of the receptor and thus cause severe phenotypes as observed in our patients.  
25  
26  
27  
28  
29  
30

31  
32 Overall there is further evidence from our results that *TSHR* loss-of-function mutations  
33  
34 cause a wide spectrum of phenotypic consequences, ranging from a slight TSH resistance  
35  
36 to very severe hypothyroidism. Similarly while some deleterious *TSHR* mutations may  
37  
38 result in severe hypoplasia rendering the gland undetectable by initial scintigraphy, some  
39  
40 milder mutations may be associated with normal-sized or even slightly enlarged thyroid  
41  
42 glands, suspecting defective hormone synthesis. Our findings suggest *TSHR* mutation  
43  
44 testing should be the first investigation in families with suspected non-dyshormonogetic  
45  
46 autosomal recessive CHNG. Nevertheless currently known genes seem to account for  
47  
48 only a small proportion of CHNG (5% of all consanguineous kindreds and 25% of  
49  
50 kindreds with two or more affected children) suggesting that further loci for autosomal  
51  
52  
53  
54  
55  
56  
57  
58  
59  
60

1  
2  
3 recessive CHNG remain to be identified and that autozygosity mapping studies in  
4  
5 consanguineous families could lead to the identification of novel CHNG genes.  
6  
7  
8  
9  
10  
11  
12  
13  
14  
15  
16  
17  
18  
19  
20  
21  
22  
23  
24  
25  
26  
27  
28  
29  
30  
31  
32  
33  
34  
35  
36  
37  
38  
39  
40  
41  
42  
43  
44  
45  
46  
47  
48  
49  
50  
51  
52  
53  
54  
55  
56  
57  
58  
59  
60

For Peer Review

## REFERENCES

1. Park, S.M. & Chatterjee, V.K.K. (2005) Genetics of congenital hypothyroidism. *Journal of Medical Genetics*, **42**, 379-389.
2. Kopp, P. (2002) Genetic defects in the etiology of congenital hypothyroidism. *Endocrinology*, **143**, 2019-2024.
3. Sanders, J., Chirgadze, D.Y., Sanders, P. *et al.* (2007) Crystal structure of the TSH receptor in complex with a thyroid-stimulating autoantibody. *Thyroid*, **17**, 395-410.
4. Li, J., Edwards, P.C., Burghammer, M. *et al.* (2004) Structure of bovine rhodopsin in a trigonal crystal form. *Journal of Molecular Biology*, **343**, 1409-1438.
5. Van Durme, J., Horn, F., Costagliola, S. *et al.* (2006) GRIS: glycoprotein-hormone receptor information system. *Molecular Endocrinology*, **20**, 2247-2255.
6. Arnold, K., Bordoli, L., Kopp, J. *et al.* (2006) The SWISS-MODEL workspace: a web-based environment for protein structure homology modelling. *Bioinformatics*, **22**, 195-201.
7. Fan, Q.R. & Hendrickson, W.A. (2005) Structure of human follicle-stimulating hormone in complex with its receptor. *Nature*, **433**, 269-277.
8. Liang, Y., Fotiadis, D., Filipek, S. *et al.* (2003) Organization of the G protein-coupled receptors rhodopsin and opsin in native membranes. *Journal of Biological Chemistry*, **278**, 21655-21662.
9. Topham, C.M., Srinivasan, N. & Blundell, T.L. (1997) Prediction of the stability of protein mutants based on structural environment-dependent amino acid substitution and propensity tables. *Protein Engineering*, **10**, 7-21.

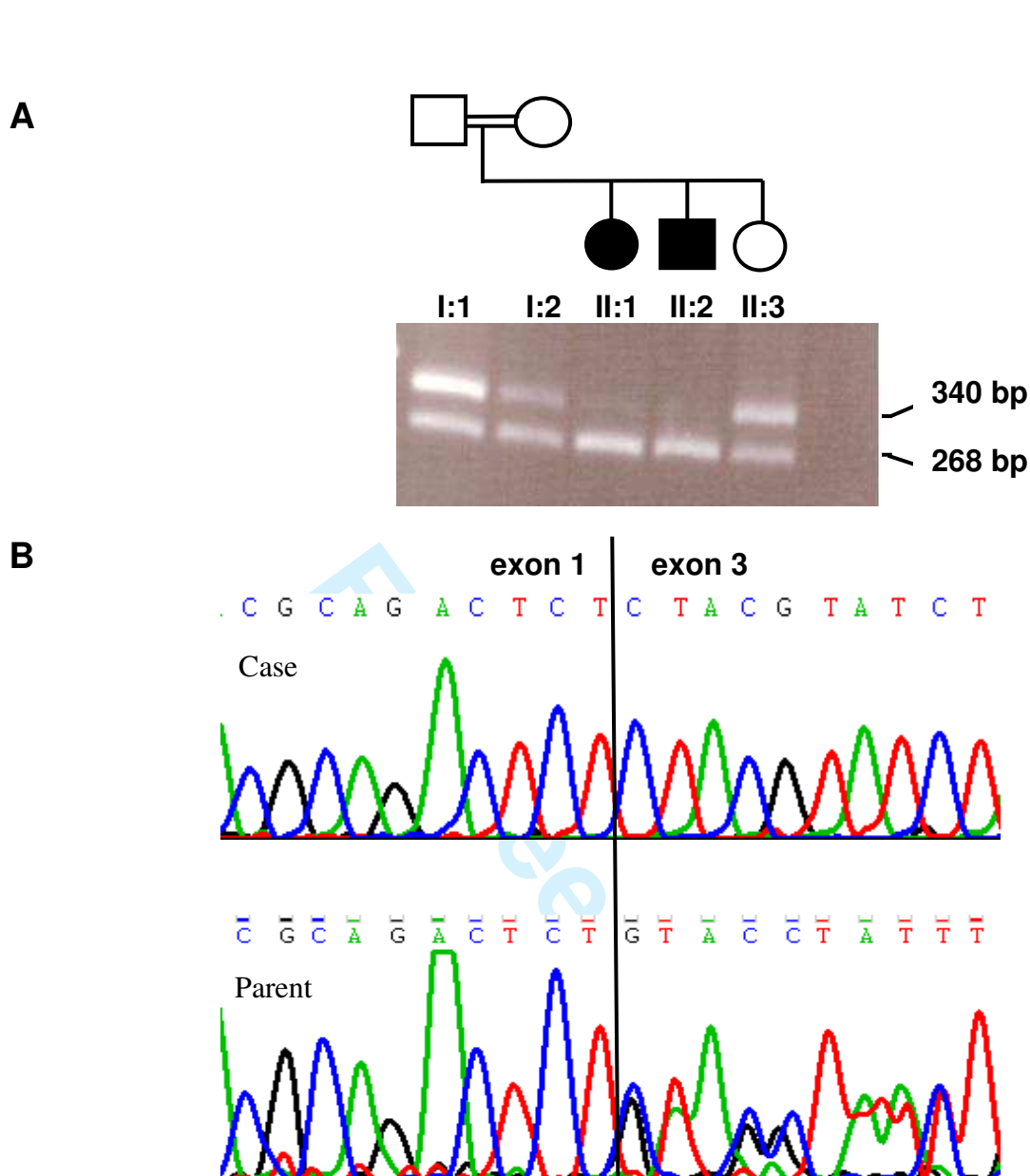
- 1  
2  
3  
4  
5  
6  
7  
8  
9  
10  
11  
12  
13  
14  
15  
16  
17  
18  
19  
20  
21  
22  
23  
24  
25  
26  
27  
28  
29  
30  
31  
32  
33  
34  
35  
36  
37  
38  
39  
40  
41  
42  
43  
44  
45  
46  
47  
48  
49  
50  
51  
52  
53  
54  
55  
56  
57  
58  
59  
60
10. UniProt Consortium. (2010) The Universal Protein Resource (UniProt) in 2010. *Nucleic Acids Research*, **38**, D142-148.
  11. Jain, E., Bairoch, A., Duvaud, S. *et al.* (2009) Infrastructure for the life sciences: design and implementation of the UniProt website. *BMC Bioinformatics*, **10**, 136.
  12. Abramowicz, M.J., Duprez, L., Parma, J. *et al.* (1997) Familial congenital hypothyroidism due to inactivating mutation of the thyrotropin receptor causing profound hypoplasia of the thyroid gland. *Journal of Clinical Investigation*, **99**, 3018-3024.
  13. Parmentier, M., Libert, F., Maenhaut, C. *et al.* (1989) Molecular cloning of the thyrotropin receptor. *Science*, **246**, 1620-1622.
  14. Nagayama, Y., Kaufman, K.D., Seto, P. *et al.* (1989) Molecular cloning, sequence and functional expression of the cDNA for the human thyrotropin receptor. *Biochemical and Biophysical Research Communications*, **165**, 1184-1190.
  15. Libert, F., Lefort, A., Gerard, C. *et al.* (1989) Cloning, sequencing and expression of the human thyrotropin (TSH) receptor: evidence for binding of auto-antibodies. *Biochemical and Biophysical Research Communications*, **165**, 1250-1255.
  16. Misrahi, M., Loosfelt, H., Atger, M. *et al.* (1990) Cloning, sequencing and expression of human TSH receptor. *Biochemical and Biophysical Research Communications*, **166**, 394-403.
  17. Stein, S.A., Oates, E.L., Hall, C.R. *et al.* (1994) Identification of a point mutation in the thyrotropin receptor of the hyt/hyt hypothyroid mouse. *Molecular Endocrinology*, **8**, 129-138.



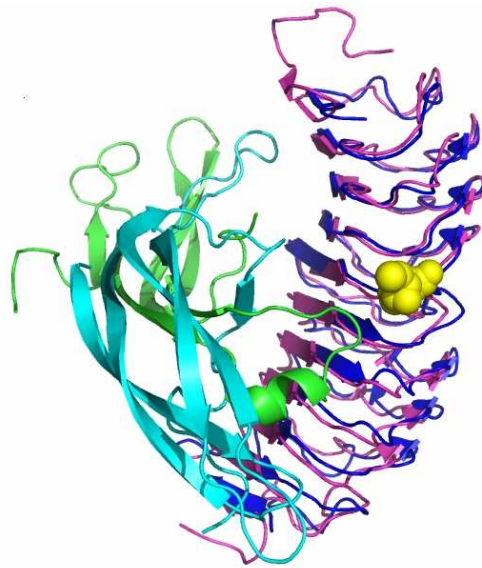
- 1  
2  
3  
4  
5  
6  
7  
8  
9  
10  
11  
12  
13  
14  
15  
16  
17  
18  
19  
20  
21  
22  
23  
24  
25  
26  
27  
28  
29  
30  
31  
32  
33  
34  
35  
36  
37  
38  
39  
40  
41  
42  
43  
44  
45  
46  
47  
48  
49  
50  
51  
52  
53  
54  
55  
56  
57  
58  
59  
60
18. Gu, W.X., Du, G.G.D., Kopp, P. *et al.* (1995) The thyrotropin receptor transmembrane domain mutation (Pro 556 Leu) in the hypothyroid hyt/hyt mouse results in plasma membrane targeting but defective TSH binding. *Endocrinology*, **136**, 3146-3153.
19. Sunthornthepvarakul, T., Gottschalk, M.E., Hayashi, Y. *et al.* (1995) Resistance to thyrotropin caused by mutations in the thyrotropin-receptor gene. *The New England Journal of Medicine*, **332**, 155-160.
20. Tonacchera, M., Di Cosmo, C., De Marco, G. *et al.* (2007) Identification of TSH receptor mutations in three families with resistance to TSH. *Clinical Endocrinology*, **67**, 712-718.
21. Refetoff, S. (2003) Resistance to thyrotropin. *Journal of Endocrinological Investigation*, **26**, 770-779.
22. de Roux, N., Misrahi, M., Brauner, R. *et al.* (1996) Four families with loss of function mutations of the thyrotropin receptor. *Journal of Clinical Endocrinology & Metabolism*, **81**, 4229-4235.
23. Tonacchera, M., Perri, A., De Marco, G. *et al.* (2004) Low prevalence of thyrotropin receptor mutations in a large series of subjects with sporadic and familial nonautoimmune subclinical hypothyroidism. *Journal of Clinical Endocrinology & Metabolism*, **89**, 5787-5793.
24. Costagliola, S., Sunthornthepvarakul, T., Migeotte, I. *et al.* (1999) Structure-function relationships of two loss-of-function mutations of the thyrotropin receptor gene. *Thyroid*, **9**, 995-1000.

- 1  
2  
3 25. Feng, X., Müller, T., Mizrachi, D. *et al.* (2008) An intracellular loop (IL2) residue  
4 confers different basal constitutive activities to the human lutropin receptor and  
5  
6 human thyrotropin receptor through structural communication between IL2 and helix  
7  
8  
9  
10  
11 6, via helix 3. *Endocrinology*, **149**, 1705-1717.  
12  
13  
14  
15  
16  
17  
18  
19  
20  
21  
22  
23  
24  
25  
26  
27  
28  
29  
30  
31  
32  
33  
34  
35  
36  
37  
38  
39  
40  
41  
42  
43  
44  
45  
46  
47  
48  
49  
50  
51  
52  
53  
54  
55  
56  
57  
58  
59  
60

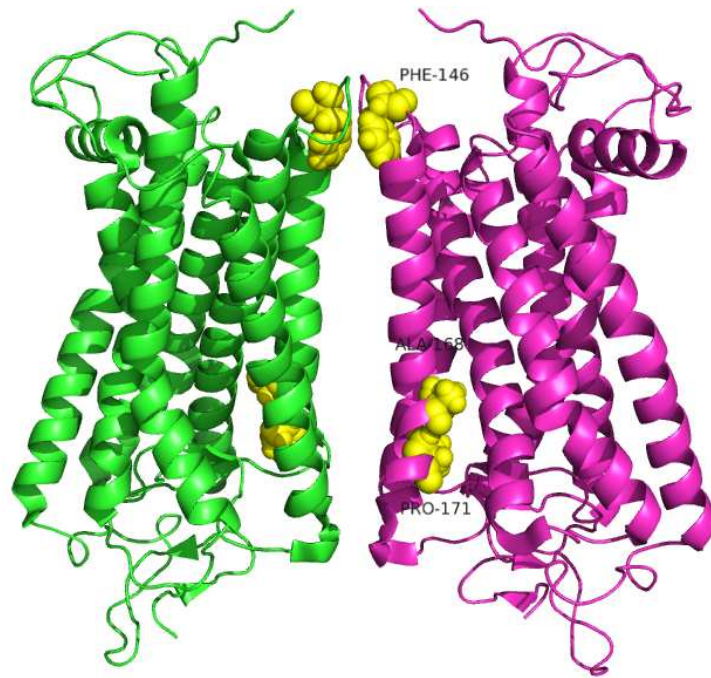
For Peer Review



**Figure 1.** A) Pedigree (upper panel) and *TSHR* exon 1-3 RT-PCR results (lower panel) in family T5 with two affected cases showing two different-sized fragments, 268-bp and 340-bp. (Note the homozygous state of the bands in affected cases versus heterozygous state in carrier family members). B) Sequence traces of *TSHR* exon 1-3 cDNA from an affected case (upper panel) and one of her parents (lower panel) representing homozygous and heterozygous states of the deletion, respectively.



**Figure 2.** FSH/FSHR complex and TSHR. The hormone binding domains are superimposed (FSHR in magenta, TSHR in blue, FSH in green and cyan) and displayed as a cartoon, and the mutated residue (Pro162 in TSHR, equivalent to Ile155 in FSHR) shown as yellow spheres.



**Figure 3.** Bovine rhodopsin dimer structure, displayed as a cartoon. This structure was used to model the effects of the membrane domain mutations in TSHR. The yellow residues, shown as spheres (146, 168, 171, top to bottom in the image), are equivalent to the mutated residues in TSHR (531, 553, 556).

1  
2  
3  
4  
5  
6  
7  
8  
9  
10  
11  
12  
13  
14  
15  
16  
17  
18  
19  
20  
21  
22  
23  
24  
25  
26  
27  
28  
29  
30  
31  
32  
33  
34  
35  
36  
37  
38  
39  
40  
41  
42  
43  
44  
45  
46  
47  
48  
49  
50  
51  
52  
53  
54  
55  
56  
57  
58  
59  
60

**Table 1.** Features of known-causative genes for congenital non-goitrous hypothyroidism (CHNG)

Gene	Chromosomal location <sup>1</sup>	CHNG locus	Microsatellite markers <sup>2</sup>	Inheritance	Thyroid morphology	Biocemical spectrum
TSHR	14q31	CHNG1	D14S1433, D14S1008, D14S606, D14S610	AR	Agensis-Normal	High TSH Low TH to euthyroid
PAX8	2q12-q14	CHNG2	D2S2269, D2S160, D2S410, D2S1893	AR, AD with variable expressivity	Agensis, hemiagenesis, hypoplasia, ectopy	High TSH Low to normal TH
TSHB	1p13	CHNG4	D1S2756, D1S2881, D1S2852, D1S189	AR	Hypoplasia	Variable TSH Low TH
NKX2-5	5q34	CHNG5	D5S400, D5S2075, D5S211, ATA52D02	AD?	Hypoplasia	High TSH Low TH

<sup>1</sup>Location according to USCS Genome Bioinformatics (<http://zeon.well.ox.ac.uk/HumanGenome>)

<sup>2</sup>Sequences available from Genome Database at <http://www.ncbi.nlm.nih.gov/sites/entrez?db=unists>

AR, autosomal recessive; AD, autosomal dominant; TH, thyroid hormones

Peer Review

1  
2  
3  
4  
5  
6  
7  
8  
9  
10  
11  
12  
13  
14  
15  
16  
17  
18  
19  
20  
21  
22  
23  
24  
25  
26  
27  
28  
29  
30  
31  
32  
33  
34  
35  
36  
37  
38  
39  
40  
41  
42  
43  
44  
45  
46  
47

**Table 2.** Number of patients at each locus in whom linkage could not be excluded.

Population	CHNG loci				
	TSHR	TSHB	PAX	NKX2-5	CHNG3
All (n=139)	24	17	15	9	9
Pakistani Cases (n=44)	10	8	5	6	2
Turkish Cases (n=95)	14	9	10	3	7

For Peer Review

**Table 3:** Details of *TSHR* mutations detected in 6 kindreds with congenital hypothyroidism.

Family ID	Ethnic origin	Nucleotide change	Protein change	Mutation type	Exon	Previously reported?	Number of affected individuals	Phenotype
B1	Pakistani	c.1657G>C	p.Ala553Thr	Missense	10	Yes	2	Severe thyroid hypoplasia
T1	Turkish	c.317+1G>A	???	splice	-	No	2	Thyroid aplasia
T2	Turkish	c.1667C>G	p.Pro556Arg	Missense	10	No	1	Thyroid aplasia
T3	Turkish	c.484C>G	p.Pro162Ala	Missense	6	Yes	1	Moderate TSH resistance
T4	Turkish	c.1591C>T	p.Arg531Trp	Missense	10	No	1	Mild TSH resistance
T5	Turkish	Deletion exon 2	???	Exon2 deletion	2	No	2	Severe thyroid hypoplasia



**Table 4.** Structural prediction scores calculated by the software tool SDM<sup>9</sup>

3G04 <sup>a</sup>		SDM prediction	
Pro162Ala		-0.72	neutral
TSHR	1GZM <sup>b</sup>	SDM predictions	
Arg531Trp	F146W	1.25	neutral
Arg531Glu	F146Q	-2.08	disease-associated
Ala553Thr	A168T	-2.65	disease-associated
Pro556Arg	P171R	0.69	neutral
Pro556Leu	P171L	3.45	disease-associated

<sup>a</sup>PDB code for the extracellular domain of TSHR molecule based on crystal structure as resolved by Sanders et al.<sup>3</sup>

<sup>b</sup>PDB code for bovine rhodopsin molecule. Equivalent residues corresponding to the mutation sites in TSHR molecule are indicated and prediction scores are based on alterations in these residues.

For Peer Review

1  
2  
3  
4  
5  
6  
7  
8  
9  
10  
11  
12  
13  
14  
15  
16  
17  
18  
19  
20  
21  
22  
23  
24  
25  
26  
27  
28  
29  
30  
31  
32  
33  
34  
35  
36  
37  
38  
39  
40  
41  
42  
43  
44  
45  
46  
47  
48  
49  
50  
51  
52  
53  
54  
55  
56  
57  
58  
59  
60