



HAL
open science

Aspects of outpatient palliative care in Germany—a survey among office-based physicians

Anne Prenzler, Thomas Mittendorf, Johann-Matthias Schulenburg, Ulrike Theidel, Thomas Montag, Hans Christof Müller-Busch

► **To cite this version:**

Anne Prenzler, Thomas Mittendorf, Johann-Matthias Schulenburg, Ulrike Theidel, Thomas Montag, et al.. Aspects of outpatient palliative care in Germany—a survey among office-based physicians. *Journal of Public Health*, 2010, 19 (2), pp.155-160. 10.1007/s10389-010-0360-8 . hal-00583565

HAL Id: hal-00583565

<https://hal.science/hal-00583565>

Submitted on 6 Apr 2011

HAL is a multi-disciplinary open access archive for the deposit and dissemination of scientific research documents, whether they are published or not. The documents may come from teaching and research institutions in France or abroad, or from public or private research centers.

L'archive ouverte pluridisciplinaire **HAL**, est destinée au dépôt et à la diffusion de documents scientifiques de niveau recherche, publiés ou non, émanant des établissements d'enseignement et de recherche français ou étrangers, des laboratoires publics ou privés.

Aspects of outpatient palliative care in Germany – a survey among office-based physicians

Prenzler Anne¹
Mittendorf Thomas¹
von der Schulenburg Johann-Matthias¹
Theidel Ulrike²
Montag Thomas³
Müller-Busch Hans Christof³

¹ Leibniz University Hannover, Center for Health Economics,
Hannover, Germany

² Wyeth Pharma GmbH, Muenster, Germany

³ German Association for Palliative Medicine, Berlin, Germany

Address:

Anne Prenzler
Leibniz University Hannover
Center for Health Economics
Koenigsworther Platz 1

D-30167 Hannover

Tel. + 49 511-762 19141

Fax + 49 511-762 5081

Email: ap@ivbl.uni-hannover.de

Abstract

Background: Currently, Palliative care is widely discussed. Aim of this study is to explore different aspects of the ambulatory treatment environment of palliative patients and its structure in Germany from the viewpoint of caring physicians.

Methods: A structured questionnaire was developed and sent to 1,003 office-based physicians in Germany. Topics were the delivery and effort of care, cooperation between health care providers, the perception of existing health care structures, the reimbursement system, as well as an assessment of future developments. Sub-groups analyses were conducted.

Results: 314 questionnaires were included in the statistical analyses. 50% estimate the additional time and effort for palliative patients compared to non-palliative patient to be 50% and more. The best cooperation is seen with caregivers; however, cooperation with psycho-social care should be improved. 50% state the outpatient health care situation as (very) insufficient, but improvements are expected in future. 90% assess German reimbursement structures as (very) insufficient.

Conclusions: This study gives an insight into the German outpatient health care setting for palliative patients. Palliative patients have a higher and more complex need with respect to health care than other patients. Further studies should focus on the collection of longitudinal patient data for a more comprehensive insight.

Keywords: Palliative care, Palliative medicine, constipation, Germany, reimbursement, SAPV

1
2
3
4
5
6
7
8
9
10
11
12
13
14
15
16
17
18
19
20
21
22
23
24
25
26
27
28
29
30
31
32
33
34
35
36
37
38
39
40
41
42
43
44
45
46
47
48
49
50
51
52
53
54
55
56
57
58
59
60
61
62
63
64
65

Background

1
2 In Germany as well as in other European countries, the demographic structure is
3
4 characterized by an increasing number of elderly people. Today, about 20% of the
5
6 German population is over 65 years old and will increase up to 33% by 2050 (Federal
7
8 Institute for Population Research 2008). This change is accompanied by a rising
9
10 incidence of specific diseases which follow at least partly by an increase in age.
11
12 Especially the rising number of cancer patients results from this demographical shift
13
14 and reflects a major public health burden to society today and in the near future. For
15
16 instance, according to German data the incidence of cancer indications in Germany
17
18 is projected to increase from 461,000 in 2007 to 588,000 in the year 2050 (+27%) in
19
20 absolute figures (Beske et al. 2009).
21
22
23
24
25
26
27
28

29 With regard to health services which are to be provided for such life-threatening
30
31 diseases, the need for professional, extensive health care beyond acute phases of
32
33 disease as well as the development and more importantly implementation of specific
34
35 palliative structures became more and more apparent in the last years in Germany.
36
37 The World Health Organization defines palliative care as an “approach that improves
38
39 the quality of life of patients and their families facing the problem associated with life-
40
41 threatening illness...” (WHO 2002). Whereas palliative medicine focuses on medical
42
43 care for the patients, palliative care is understood as a more holistic, multi-discipline
44
45 approach, which involves for example caregivers, psychotherapists and spiritual
46
47 guidance in addition to care provided by general practitioners (GPs) and specialized
48
49 physicians (Pastrana et al. 2008).
50
51
52
53
54
55
56
57
58
59
60
61
62
63
64
65

1 According to the World Health Organization (WHO), the inpatient palliative sector is
2 already well organized in Germany (Centeno et al. 2007). However, with respect to
3
4 the outpatient sector improvements are necessary (Radbruch et al. 2008).
5
6
7

8
9 In the German outpatient health care sector, there is a differentiation between
10 general ambulatory palliative care and specialized ambulatory palliative care (SAPV).
11
12 The SAPV differs from the general palliative care mainly by higher qualification
13 requirements (e.g. additional training in palliative medicine) and by a need for special
14 palliative care teams due to higher intensity or complexity of disease events and
15 symptoms a patient might be confronted with.
16
17
18
19
20
21
22
23
24
25

26 Over the last years, the palliative care sector gained a higher attention in Germany
27 (Schneider et al. 2009). The German government and the Statutory Health Insurance
28 (SHI) have tried to support the development of new palliative care structures e.g. via
29 new regulations regarding SAPV. For instance, every person insured within the SHI
30 who has a non-curable, progressive disease as well as limited life expectancy has
31 the right to receive SAPV if needed. SAPV can then be prescribed by physicians with
32 costs being covered by the SHI (Federal Joint Committee 2008).
33
34
35
36
37
38
39
40
41
42
43
44
45

46 However, even though efforts in this health care sector have been increased, there is
47 a lack of scientific research in this field in Germany to date (Schneider et al. 2006).
48
49 Therefore, the aim of this study is to explore different aspects of the ambulatory
50 treatment environment of palliative patients and its structure in Germany from the
51 viewpoint of caring physicians.
52
53
54
55
56
57
58
59
60
61
62
63
64
65

Methods

1
2 A structured questionnaire was developed and sent to 1,003 office-based physicians
3
4 in Germany in January 2009 with a reminder sent in February. 50% of the contacted
5
6 doctors were members of the German Association for Palliative Medicine, the other
7
8 50% were office-based GPs taken from an IMS-database. Several issues were
9
10 addressed within the survey. Besides general information on the physicians'
11
12 specialization, information on the proportion of palliative patients as well as the
13
14 frequency and duration of visits either in the office or at home by palliative patients
15
16 were addressed.
17
18
19
20
21
22
23

24 Furthermore, since palliative care focuses on the improvement of quality of life, which
25
26 includes pain relief by opioids, an additional focus was laid on side-effects which in
27
28 turn are typically caused by opioids. Therefore, the physicians were asked to
29
30 estimate frequencies of various side-effects due to opioid medication in palliative
31
32 patients and to give information on the additional time needed for treatment of side-
33
34 effects, using the example of on opioid-induced constipation (OIC), which is known to
35
36 be the most frequent side effect (Clemens et al. 2008).
37
38
39
40
41
42
43

44 Additionally, the physicians were asked to classify and rate the ongoing cooperation
45
46 with other health care suppliers as well as the outpatient care situation for palliative
47
48 patients in general. Finally, their satisfaction with the current German reimbursement
49
50 system with regard to palliative care and their perceptions of future developments in
51
52 this health care sector was evaluated.
53
54
55
56
57
58
59
60
61
62
63
64
65

1 The data was analyzed with SPSS, version 16. As relative differences between the
2 responses of GPs and specialists as well as physicians with and without a special
3 training in palliative care were of special interest various subgroup analyses were
4 conducted. Values from descriptive statistics are given as mean values in absolute
5 terms or percentage. To explore possible statistical significances, the Mann-Whitney-
6 U-test as well as the Wilcoxon-test was applied.
7
8
9
10
11
12
13
14
15
16
17
18

19 **Results**

20 Questionnaires from 314 physicians (70.3% male) were included in the statistical
21 analyses (response rate: 31.3%). Mean and median age was 50 years. 64% were
22 GPs, the others specialists (e.g. hematologist/oncologist (13.7%); anesthetist
23 (11.5%)). On average, they already practiced in their office for 13 years, whereas
24 GPs were significantly ($p < 0.01$) longer office-based than specialists (15 vs. 10 years).
25
26
27
28
29
30
31
32
33
34
35
36
37
38
39
40
41
42
43
44
45
46
47
48
49
50
51
52
53
54
55
56
57
58
59
60
61
62
63
64
65

66
67
68
69
70
71
72
73
74
75
76
77
78
79
80
81
82
83
84
85
86
87
88
89
90
91
92
93
94
95
96
97
98
99
100
101
102
103
104
105
106
107
108
109
110
111
112
113
114
115
116
117
118
119
120
121
122
123
124
125
126
127
128
129
130
131
132
133
134
135
136
137
138
139
140
141
142
143
144
145
146
147
148
149
150
151
152
153
154
155
156
157
158
159
160
161
162
163
164
165
166
167
168
169
170
171
172
173
174
175
176
177
178
179
180
181
182
183
184
185
186
187
188
189
190
191
192
193
194
195
196
197
198
199
200
201
202
203
204
205
206
207
208
209
210
211
212
213
214
215
216
217
218
219
220
221
222
223
224
225
226
227
228
229
230
231
232
233
234
235
236
237
238
239
240
241
242
243
244
245
246
247
248
249
250
251
252
253
254
255
256
257
258
259
260
261
262
263
264
265
266
267
268
269
270
271
272
273
274
275
276
277
278
279
280
281
282
283
284
285
286
287
288
289
290
291
292
293
294
295
296
297
298
299
300
301
302
303
304
305
306
307
308
309
310
311
312
313
314
315
316
317
318
319
320
321
322
323
324
325
326
327
328
329
330
331
332
333
334
335
336
337
338
339
340
341
342
343
344
345
346
347
348
349
350
351
352
353
354
355
356
357
358
359
360
361
362
363
364
365
366
367
368
369
370
371
372
373
374
375
376
377
378
379
380
381
382
383
384
385
386
387
388
389
390
391
392
393
394
395
396
397
398
399
400
401
402
403
404
405
406
407
408
409
410
411
412
413
414
415
416
417
418
419
420
421
422
423
424
425
426
427
428
429
430
431
432
433
434
435
436
437
438
439
440
441
442
443
444
445
446
447
448
449
450
451
452
453
454
455
456
457
458
459
460
461
462
463
464
465
466
467
468
469
470
471
472
473
474
475
476
477
478
479
480
481
482
483
484
485
486
487
488
489
490
491
492
493
494
495
496
497
498
499
500
501
502
503
504
505
506
507
508
509
510
511
512
513
514
515
516
517
518
519
520
521
522
523
524
525
526
527
528
529
530
531
532
533
534
535
536
537
538
539
540
541
542
543
544
545
546
547
548
549
550
551
552
553
554
555
556
557
558
559
560
561
562
563
564
565
566
567
568
569
570
571
572
573
574
575
576
577
578
579
580
581
582
583
584
585
586
587
588
589
590
591
592
593
594
595
596
597
598
599
600
601
602
603
604
605
606
607
608
609
610
611
612
613
614
615
616
617
618
619
620
621
622
623
624
625
626
627
628
629
630
631
632
633
634
635
636
637
638
639
640
641
642
643
644
645
646
647
648
649
650
651
652
653
654
655
656
657
658
659
660
661
662
663
664
665
666
667
668
669
670
671
672
673
674
675
676
677
678
679
680
681
682
683
684
685
686
687
688
689
690
691
692
693
694
695
696
697
698
699
700
701
702
703
704
705
706
707
708
709
710
711
712
713
714
715
716
717
718
719
720
721
722
723
724
725
726
727
728
729
730
731
732
733
734
735
736
737
738
739
740
741
742
743
744
745
746
747
748
749
750
751
752
753
754
755
756
757
758
759
760
761
762
763
764
765
766
767
768
769
770
771
772
773
774
775
776
777
778
779
780
781
782
783
784
785
786
787
788
789
790
791
792
793
794
795
796
797
798
799
800
801
802
803
804
805
806
807
808
809
810
811
812
813
814
815
816
817
818
819
820
821
822
823
824
825
826
827
828
829
830
831
832
833
834
835
836
837
838
839
840
841
842
843
844
845
846
847
848
849
850
851
852
853
854
855
856
857
858
859
860
861
862
863
864
865
866
867
868
869
870
871
872
873
874
875
876
877
878
879
880
881
882
883
884
885
886
887
888
889
890
891
892
893
894
895
896
897
898
899
900
901
902
903
904
905
906
907
908
909
910
911
912
913
914
915
916
917
918
919
920
921
922
923
924
925
926
927
928
929
930
931
932
933
934
935
936
937
938
939
940
941
942
943
944
945
946
947
948
949
950
951
952
953
954
955
956
957
958
959
960
961
962
963
964
965
966
967
968
969
970
971
972
973
974
975
976
977
978
979
980
981
982
983
984
985
986
987
988
989
990
991
992
993
994
995
996
997
998
999
1000

999 A specific point of interest of this survey was the duration of the palliative phase (from
1000 first palliative health care need till death). According to our results, the palliative

1
2
3
4
5
6
7
8
9
10
11
12
13
14
15
16
17
18
19
20
21
22
23
24
25
26
27
28
29
30
31
32
33
34
35
36
37
38
39
40
41
42
43
44
45
46
47
48
49
50
51
52
53
54
55
56
57
58
59
60
61
62
63
64
65

period lasts for less than six months in 60% of all cases, with PM-trained physicians estimating this timeframe to be shorter than others (figure 1). No significant difference between GPs and specialists was identified.

Insert figure 1 here

Every second physician estimated the additional time and effort needed for a palliative patient compared to a non-palliative patient with at least 50%. For a more detailed view of the additional required time, participants were asked to approximate the number of home visits and office consultations as well as the timeframe needed per visit for palliative patients vs. non-palliative patients with chronic health problems. On average, GPs estimate to visit palliative patients 5.9 times per quarter at their home (non-palliative: 2.3; $p < 0.01$). They also state to need more time per home visit (18 vs. 12 min; $p < 0.01$). Palliative patients also have significantly ($p < 0.01$) more office consultations per quarter in a specialist's practice (4.6 vs. 3.4) and need more time per visit (16 vs. 10 min).

As to the important treatment component, physicians were asked to estimate the frequency of various side effects due to opioid containing medications in palliative patients. The physicians should differentiate between patients who receive mild and strong opioids, respectively, whereas the WHO-pain ladder was used to distinguish between the opioid groups (WHO-2: mild opioids, i.e. codeine; WHO-3: strong opioids, i.e. morphine). According to the answers OIC is the most frequent side-effect, followed by nausea / vomiting, and fatigue. On average, physicians estimated the occurrence of OIC in 60 % of the palliative patients, who received a WHO-3-

1
2
3
4
5
6
7
8
9
10
11
12
13
14
15
16
17
18
19
20
21
22
23
24
25
26
27
28
29
30
31
32
33
34
35
36
37
38
39
40
41
42
43
44
45
46
47
48
49
50
51
52
53
54
55
56
57
58
59
60
61
62
63
64
65

opioid (figure 2). PM-trained physicians indicated significantly higher frequencies of OIC than physicians without this extra qualification (WHO-2 criteria: 32% vs. 26%; WHO-3 criteria: 63% vs. 54%). Specialists noted nausea / vomiting, dizziness and confusion as side-effects due to WHO-2-opioids significantly less often than GPs, whereas specialists significantly more often observe fatigue as a result of more potent formulations (WHO-3) ($p < 0.05$). Since these side-effects might cause additional time in patient care, physicians were asked to estimate this additional time using the example of OIC. On average, physicians estimate the additional time to be 20%, whereas PM-trained physicians approximate slight less additional effort than others (18% vs. 21%).

Insert figure 2 here

In the final part of the questionnaire, assessment of overall outpatient health care structure for palliative patients, reimbursement system, and cooperation between different groups of health care providers as well as perceptions on possible future developments were outlined.

Every second physician considers the outpatient health care structure as to be (very) insufficient. Furthermore, over 60% of the PM-trained doctors as well as specialists, independent of their knowledge in palliative medicine, assess the situation as (very) unsatisfactory (figure 3). A large discrepancy between statements of GPs could be observed: 51% of the PM-trained GPs describe the situation as insufficient (13%: very insufficient), whereas only 22% of the GPs without PM-training share this opinion (3%: very insufficient).

1
2 With respect to the reimbursement system in the outpatient care sector, 95% of the
3
4 PM-trained physicians state that it is (very) insufficient (without PM-training: 87%).
5
6 However, 58% of the physicians who are informed about the current SAPV-
7
8 regulations believe that those will improve the health care structure in outpatient care
9
10 in Germany. Yet, only 31% expect improvements with respect to the reimbursement
11
12 situation. Specialists tend to be more optimistic than GPs in this question.
13
14
15
16
17
18

19 *Insert figure 3 here*
20
21
22
23

24 A main issue for an efficient provision of health care to palliative patients is the
25
26 cooperation between the different providers of health care. The results of this survey
27
28 show that physicians assess the existing cooperation structures as quite good, as
29
30 before, specialists being more optimistic than GPs in their assessment (figure 4).
31
32
33
34
35

36 The best cooperation is given with caregivers: Three in four participants describe this
37
38 form of cooperation as to be (very) good. In contrast, the assessment of the
39
40 cooperation with psychotherapists and parties providing spiritual guidance is
41
42 heterogeneous: 42% of the GPs give (very) good ratings, 30% are neutral and 28%
43
44 consider the situation as being (very) insufficient which is lower in values in
45
46 comparison to the answers given by specialists (60% - 22% - 18%). These results
47
48 are also reflected in the question in which field the cooperation should improve with
49
50 respect to extent and quality. As a result, especially psycho-social care and its
51
52 cooperation are seen as an area of future efforts.
53
54
55
56
57
58
59
60
61
62
63
64
65

1
2
3
4
5 *Insert figure 4 here*
6
7

8
9
10
11
12
13
14
15
16
17
18
19
20
21
22
23
24
25
26
27
28
29
30
31
32
33
34
35
36
37
38
39
40
41
42
43
44
45
46
47
48
49
50
51
52
53
54
55
56
57
58
59
60
61
62
63
64
65

This German study sample was also asked if they would support changes in the treatment process with respect to the assignment of duties to other caregivers, as the spectrum of responsibilities of other groups is rather limited in comparison to other countries, e.g. the role of outpatient nurses in the UK (Taylor et al. 2009). 71% of specialists with PM-training (85% without) indicate that they would be willing to share or transfer duties to caregivers (only 66% of the GPs with PM-training (57% without) would support this).

Looking into the future, 60% of palliative care specialists believe that the quality of outpatient palliative health care will develop positively within the next five years. Only 30% of the physicians without PM-training agree on this and 35% of this group even expects a deterioration of the quality of health care.

Discussion

This study gives an overview of the perceptions of physicians working in palliative care in Germany about the outpatient health care structure of this very special area. Following the findings palliative patients have a higher and more complex need with respect to health care than other patients which results in more time and effort the physicians have to spend on this special patient group.

According to the German Remuneration Scheme (EBM) physicians receive a lump-sum payment per quarter for office consultations, irrespective of the number or length of visits or the morbidity or palliative status of a patient (National Association of

1 Statutory Health Insurance Physicians 2010). GPs receive approximately EUR 35 per
2 quarter and patient; specialists about EUR 31 (not including special procedures).
3
4 Furthermore, taking care of OIC, which was identified as the most common opioid-
5 induced side-effect and very time-consuming, or any other complication, is also not
6 reflected separately in the remuneration system. Regular home visits are reimbursed
7 with approx. EUR 15. Hence, it is not surprising that 90% of the physicians consider
8 the reimbursement regarding outpatient care of palliative patients as being
9 insufficient. This inadequate compensation of the time-consuming services provided
10 during palliative care was also recently explored via a series of expert interviews
11 (Brueckner et al. 2009). Following new regulations regarding SAPV, special palliative
12 care teams, which need to fulfill certain requirements (Federal Joint Committee
13 2008), can make a special contract based on SAPV with individual sickness funds
14 and receive additional remuneration. Started in April 2009, office-based physicians
15 also might receive extra payments for prescribing SAPV which is connected with
16 some bureaucratic effort (National Association of Statutory Health Insurance
17 Physicians 2010). However, as the German health care system faces the challenge
18 of an upcoming lack of practicing physicians (National Association of Statutory Health
19 Insurance Physicians, German Medical Association 2007) – especially in rural areas
20 – it still is highly indicated to further work on additional adjustments within the
21 remuneration system. This might also improve the job satisfaction of German
22 physicians which is – according to the results in the present study – quite poor. The
23 responsibility of adjustment should not be born solely by the Health Ministry, but
24 rather should be shared with health insurances and the different physician
25 associations in this field.
26
27
28
29
30
31
32
33
34
35
36
37
38
39
40
41
42
43
44
45
46
47
48
49
50
51
52
53
54
55
56
57
58
59
60
61
62
63
64
65

1
2
3
4
5
6
7
8
9
10
11
12
13
14
15
16
17
18
19
20
21
22
23
24
25
26
27
28
29
30
31
32
33
34
35
36
37
38
39
40
41
42
43
44
45
46
47
48
49
50
51
52
53
54
55
56
57
58
59
60
61
62
63
64
65

Other studies have already issued the cooperation between health care providers (Schneider et al. 2007). The results of the study indicate that especially the cooperation between psychotherapists and other health care providers involved in palliative care is in need of improvement. This cooperation is essential for providing a more holistic health care approach which is indicated in palliative care (Borck 2006). With respect to the assignment of duties to caregivers, GPs seem to be more skeptical than specialists. An explanation for this finding might be that disproportionately more GPs have to give up tasks than specialists and hence receive less payment. Since 2009, qualified assistant personnel of physicians are allowed to undertake home visits on behalf of the GP which is reimbursed with normally EUR 17 including time and cost for the journey (National Association of Statutory Health Insurance Physicians 2010). However, this possibility of altering treatment paradigms is connected to some requirements. For instance, the respective regional area needs to be under-supplied and the assistant has to do undergo qualified training. As a result it is not expected that this change has the potential to serve as a significant support for physicians.

41
42
43
44
45
46
47
48
49
50
51
52
53
54
55
56
57
58
59
60
61
62
63
64
65

The validity of findings from this survey might be limited due to different reasons. First of all, it cannot be ruled out that the cohort has a selection bias. However, as the study sample with over 300 physicians is rather big for this kind of health care services research the results might at least be considered as giving trend indications. If a selection bias was created by asking specialists with a background in palliative care in one subgroup of the study cohort, it is more likely that the results of the survey would be biased towards a more positive description of the average real world treatment environment.

1
2 Another important aspect are different definitions of palliative status (Pastrana et al.
3
4 2008). Hence, this might explain why the figures concerning the relative importance
5
6 of palliative patient vs. patients in the outpatient setting in general are a bit higher
7
8 than in earlier works (Abholz 1998; Buser et al. 2004). Furthermore, it is important to
9
10 emphasize that the information in this study is not directly based on clinical data from
11
12 palliative patients files but rather on estimations from physicians who take part in the
13
14 treatment process. Therefore, the reliability and validity of the information (e.g. on the
15
16 proportion of side-effects as well as the length of a palliative period) might be limited.
17
18 An earlier study by Koch-Horn et al. (2002) analyzed in a prospective study setting,
19
20 that GPs on average need 15 minutes per patient including journey time which is less
21
22 than in the present study.
23
24
25
26
27
28
29
30

31 Summarizing, not only the results but also the limitations of the study call for a need
32
33 of further studies that should focus on the collection of longitudinal patient data to get
34
35 an even more comprehensive insight into the health care environment and the
36
37 specific needs of palliative patients.
38
39
40
41
42

43 **Conclusions**

44
45 In comparison to non-palliative care there is a need for higher use of medical
46
47 resources among palliative patients – a need that currently might not be adequately
48
49 reflected in the remuneration system. Considering ongoing demographic
50
51 developments and the resulting importance of palliative care further research has to
52
53 identify room for improvement and corresponding strategies.
54
55
56
57
58
59
60
61
62
63
64
65

1
2 **Funding / Conflict of interest**
3

4 This work was supported by Wyeth Pharma GmbH, Germany, a company of the
5 Pfizer Group. Apart from the funding, the authors declare to have no further conflict
6 of interest.
7
8
9

10
11
12
13
14 **References**
15

16
17
18
19
20 Abholz HH (1998) Palliativmedizinische Versorgung - eine hausärztliche Aufgabe?
21

22 [Palliative Care - a task for the GP?] Z Allg Med 74:957-961
23

24
25
26 Beske F, Katalinic A, Peters E, Pritzkeleit R (2009) Morbiditätsprognose 2050.
27

28 Ausgewählte Krankheiten für Deutschland, Brandenburg und Schleswig-Holstein
29

30 [Morbidity prognosis 2050]. Schmidt & Klaunig, Kiel
31
32

33
34 Borck S (2006) Pastoral care in palliative medicine. Bundesgesundheitsblatt
35

36 Gesundheitsforschung Gesundheitsschutz 49:1122-1131
37
38

39
40 Brueckner T, Schumacher M, Schneider N (2009) Palliative care for older people -
41

42 exploring the views of doctors and nurses from different fields in Germany. BMC
43

44 Palliat Care 8:7
45
46

47
48 Buser K, Amelung V, Brandes I et al (2004) Gutachten: Palliativversorgung in
49

50 Niedersachsen - Bestandsaufnahme und Empfehlungen zur Weiterentwicklung.
51

52 [Expert's report regarding palliative care in lower saxony for the German government]
53
54
55
56
57
58
59
60
61
62
63
64
65

1 Centeno C, Clark D, Lynch T et al (2007) Facts and indicators on palliative care
2 development in 52 countries of the WHO European region: results of an EAPC task
3 force. Palliat Med 21;463-471
4
5

6
7
8 Clemens KE, Klaschik E (2008) Management of constipation in palliative care
9 patients. Curr Opin Support Palliat Care 2:22-27
10

11
12
13 Federal Institute for Population Research (2008) Bevölkerung: Daten, Fakten ,
14 Trends zum demographischen Wandel in Deutschland [Population - Figures, Facts,
15 Trends regarding the demographical change in Germany]. Wiesbaden
16
17
18

19
20
21 Federal Joint Committee (2008) Spezialisierte Ambulante Palliativversorgungs-
22 Richtlinie (SAPV-RL) [Directive for prescription of specialized ambulatory palliative
23 care]. Bundesanzeiger 2008:911
24
25
26

27
28
29 Koch-Horn C, Knupp B, Gschrey F et al (2002) Family doctor care for the dying -
30 Costs and expenses of home care. Z Allg Med 78:82-85
31
32

33
34
35 National Association of Statutory Health Insurance Physicians (2010) German
36 Remuneration Scheme (EBM) <http://www.kbv.de/ebm2010/ebmgesamt.htm>
37
38
39
40
41
42
43
44
45
46
47
48
49
50
51
52
53
54
55
56
57
58
59
60
61
62
63
64
65

66
67
68 National Association of Statutory Health Insurance Physicians, German Medical
69 Association (2007) Studie zur Altersstruktur- und Arztzahlentwicklung: Daten, Fakten,
70 Trends. [Study on age structure and development of number of doctors]
71
72

73
74 Pastrana T, Junger S, Ostgathe C et al (2008) A matter of definition - key elements
75 identified in a discourse analysis of definitions of palliative care. Palliat Med 22:222-
76
77
78
79
80
81
82
83
84
85
86
87
88
89
90
91
92
93
94
95
96
97
98
99
232

1 Radbruch L, Voltz R (2008) What is special in specialised palliative care? Schmerz
2 22:7-8
3

4
5 Schneider N, Buser K, Amelung VE (2007) Discrepancies in the Viewpoints of
6 Different German Health Care Providers of Palliative Care. Evaluation & the Health
7 Professions 30:96-109
8
9

10
11
12
13 Schneider N, Luckmann SL, Behmann M et al (2009) Problems and challenges for
14 palliative care: what are the views of different stakeholders on the meso and macro
15 level of the health system? Health Policy 93:11-20
16
17
18
19

20
21
22 Schneider N, Schwartz FW (2006) High need for improvement and many open
23 questions in health care for palliative patients. Med Klin (Munich) 101:552-557
24
25
26

27
28 Taylor J, Irvine F, Bradbury-Jones C et al (2009) On the precipice of great things:
29 The current state of UK nurse education. Nurse Educ Today; epub.
30
31

32
33
34 World Health Organization (2002) WHO Definition of Palliative Care.
35
36
37 www.who.int/cancer/palliative/definition/en/ Accessed March 1st 2010
38
39
40
41
42
43
44
45
46
47
48
49
50
51
52
53
54
55
56
57
58
59
60
61
62
63
64
65

Figure1

[Click here to download high resolution image](#)

Figure 1: Duration of palliative phase

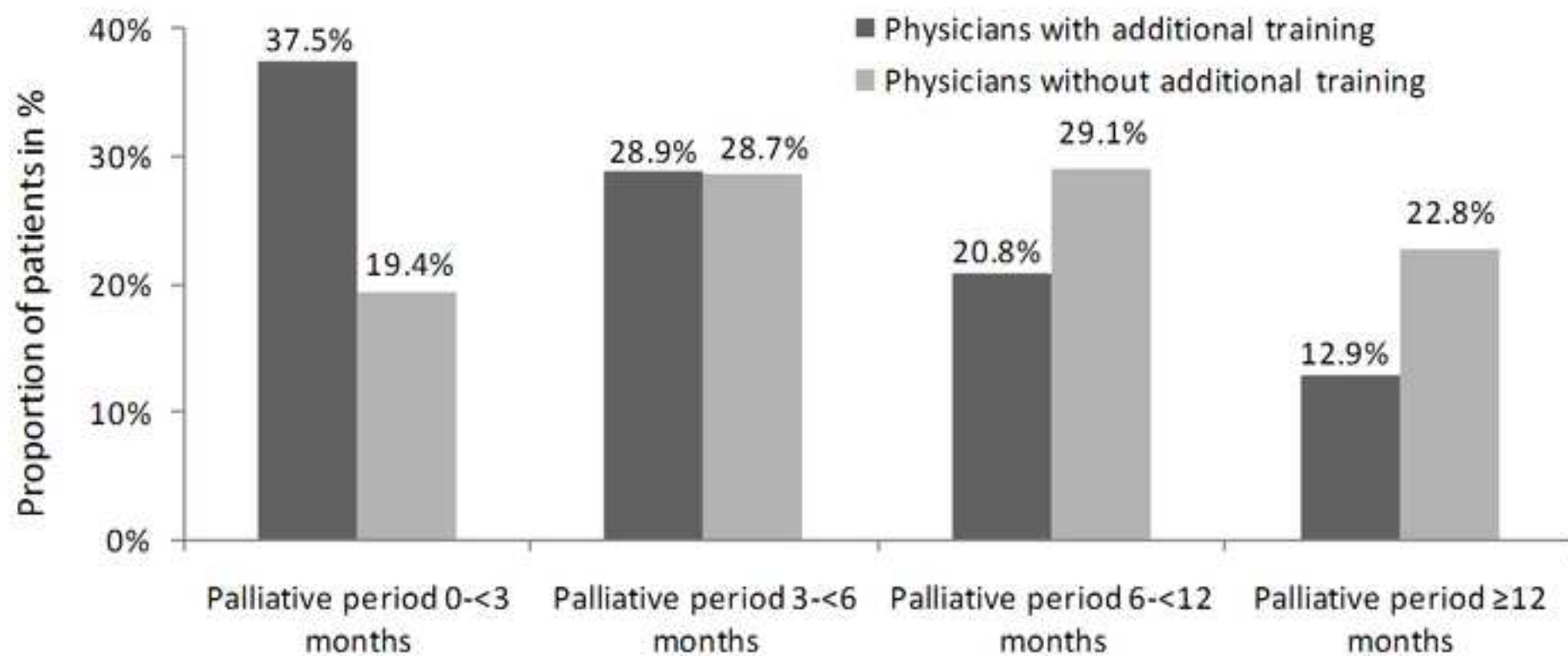


Figure 2: Side effects in palliative patients

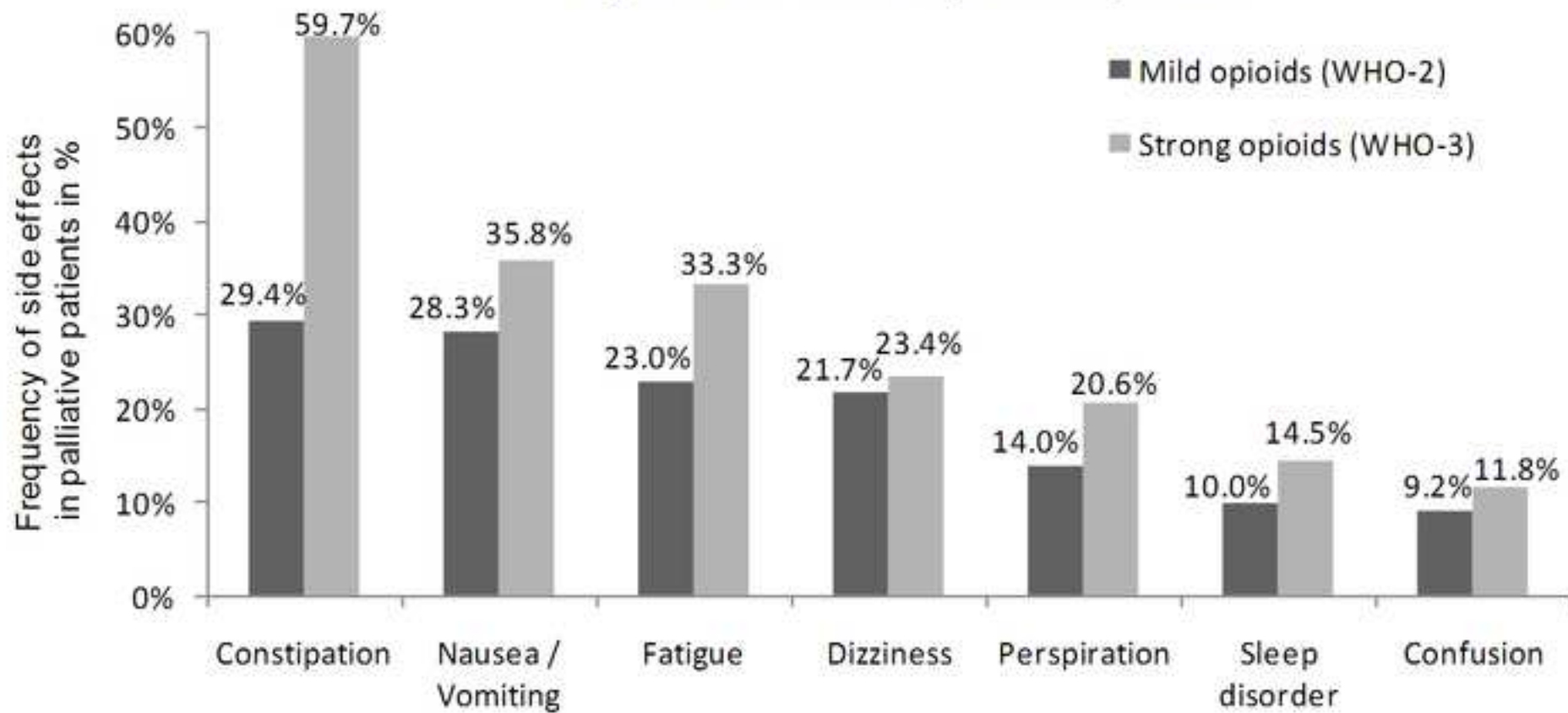


Figure3

[Click here to download high resolution image](#)

Figure 3: Assessment of outpatient health care situation of palliative patients in Germany

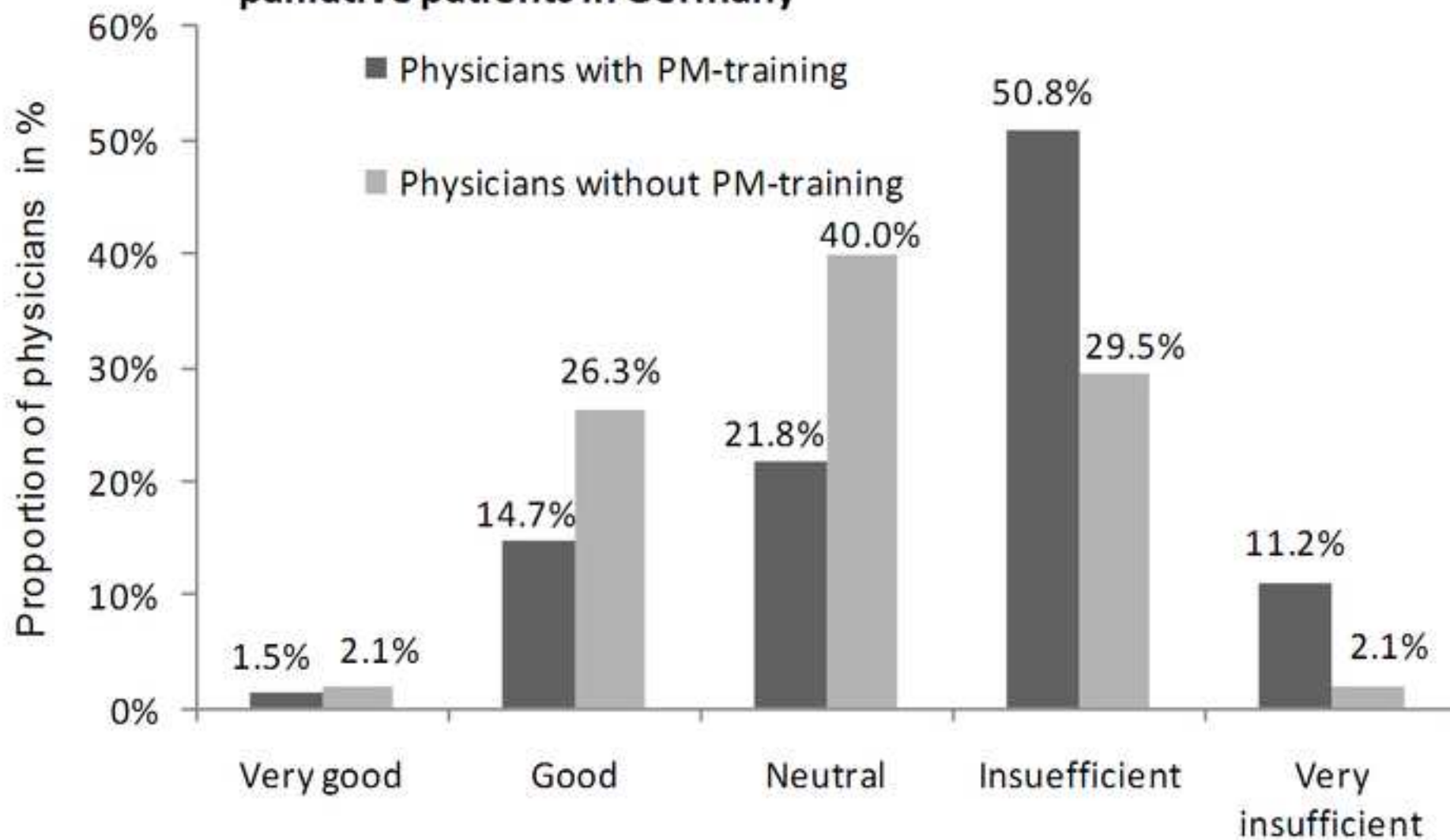


Figure4

[Click here to download high resolution image](#)

Figure 4: Assessment of cooperation structures with other health care providers

