



HAL
open science

Panel Estimates of the Determinants of British Regional Male Incapacity Benefit Rolls 1998-2006

Duncan Mcvicar, Michael Anyadike-Danes

► **To cite this version:**

Duncan Mcvicar, Michael Anyadike-Danes. Panel Estimates of the Determinants of British Regional Male Incapacity Benefit Rolls 1998-2006. *Applied Economics*, 2008, 42 (26), pp.3335. 10.1080/00036840802112414 . hal-00582232

HAL Id: hal-00582232

<https://hal.science/hal-00582232>

Submitted on 1 Apr 2011

HAL is a multi-disciplinary open access archive for the deposit and dissemination of scientific research documents, whether they are published or not. The documents may come from teaching and research institutions in France or abroad, or from public or private research centers.

L'archive ouverte pluridisciplinaire **HAL**, est destinée au dépôt et à la diffusion de documents scientifiques de niveau recherche, publiés ou non, émanant des établissements d'enseignement et de recherche français ou étrangers, des laboratoires publics ou privés.



Panel Estimates of the Determinants of British Regional Male Incapacity Benefit Rolls 1998-2006

Journal:	<i>Applied Economics</i>
Manuscript ID:	APE-07-0192.R1
Journal Selection:	Applied Economics
Date Submitted by the Author:	14-Mar-2008
Complete List of Authors:	mcvicar, duncan; queen's university belfast, school of management and economics Anyadike-Danes, Michael; Economic Research Institute of Northern Ireland
JEL Code:	I12 - Health Production: Nutrition, Mortality, Morbidity, Disability, etc. < I1 - Health < I - Health, Education, and Welfare, J68 - Public Policy < J6 - Mobility, Unemployment, and Vacancies < J - Labor and Demographic Economics
Keywords:	health, disability, Incapacity Benefit, regional labour markets, Labour Force Survey



Panel Estimates of the Determinants of British Regional Male Incapacity Benefits Rolls 1998-2006

Duncan McVicar

Queen's University School of Management

Queen's University Belfast

University Road

Belfast BT7 1NN

United Kingdom

44 (0)28 9097 3297

D.McVicar@qub.ac.uk

and

Michael Anyadike-Danes

Economic Research Institute of Northern Ireland

22-24 Mount Charles

Belfast BT7 1NZ

United Kingdom

44 (0)28 9026 1800

M.Anyadike-Danes@erini.ac.uk

This Version: March 2008

JEL: I12, J68

Keywords: disability, incapacity benefits, regional labour markets, Labour Force Survey

Acknowledgements: Thanks to two anonymous referees and seminar participants at WPEG2007 for helpful comments on an earlier draft. Thanks also to the Northern Ireland Department of Enterprise, Trade and Investment for supplying ready-prepared quarterly, regional LFS data.

Abstract

This paper explores the determinants of the proportion of the working age male population claiming incapacity benefits (IB), across the eleven British Government Office Regions, for the period 1998-2006. Three different approaches are adopted to modelling register dynamics: first treating IB stocks as if they were trend-stationary, albeit with persistence, and estimating reduced form models for their logs; second treating IB stocks as if they were non-stationary and examining their long run determinants plus short run equilibrium reversion properties; third focusing on the determinants of gross inflows and outflows that together drive IB stocks. Given the nature of the data no approach is ideal, yet the models provide reasonably robust evidence that labour market changes – specifically falling unemployment rates and rising real earnings – have contributed to falling male IB stocks over the period.

1. Introduction

The number of people of working age claiming income replacement incapacity benefits (henceforth IB¹) in Britain currently stands at 2.7 million. This figure has grown by over 300 percent in 30 years, although the growth rate has slowed considerably in recent years. Similar growth has been experienced by the US (e.g. see Bound and Burkhauser, 1999; Autor and Duggan, 2006) and by many other OECD countries (e.g. see Bound and Burkhauser, 1999; Prinz, 2003). In both the UK and US the headline figures are split unequally by gender, with men making up around three fifths of the totals.

McVicar (2008) suggests that the causes of the phenomenal growth in British IB rolls are still poorly understood, or at least poorly *quantified*. This is despite a number of informative descriptive and qualitative studies in recent years (e.g. see Huddleston, 2000; Walker and Howard, 2000; Alcock et al., 2003; Bell and Smith, 2004). McVicar's argument is that estimation of properly specified multivariate models is likely to be necessary – although perhaps not sufficient – in order to get a clearer idea of the relative roles played by disability prevalence, benefit characteristics and the labour market in explaining the growth of IB rolls. Few papers have attempted such an exercise using British data. The US literature is more convincing in this respect, but institutional and other differences mean US findings may not be directly exportable.

¹ Here we follow the usual convention in the British incapacity benefit literature of using the term 'incapacity benefits' to denote all income replacement incapacity benefits, i.e. Incapacity Benefit itself, but also Severe Disablement Allowance and Credits Only cases. We use the abbreviation 'IB' as a shorthand for all these incapacity benefits, not just for Incapacity Benefit, which itself is commonly abbreviated to 'IB'.

1
2
3 The growth in IB rolls has not been uniform across space, and within some countries this has led
4 to the emergence of significant regional differences in the proportion of the regional working age
5 populations claiming such benefits. In the US, for example, the southern states generally have a
6 higher proportion of the working age population receiving Disability Insurance (DI) than other
7 states (e.g. see Rupp and Stapleton, 1998; McVicar, 2006). Regional differences in Britain are
8 particularly pronounced, with Wales and the North having considerably higher IB rolls than the
9 South (e.g. see Fothergill and Wilson, 2007; McVicar, 2006). The causes of the differential
10 growth rates that lie behind the current regional variation in British IB rolls – as in the case of
11 aggregate national growth in IB rolls – are also, as yet, poorly understood. Again, although we
12 may have a reasonable qualitative understanding of the factors behind regional variation, few
13 studies have attempted to quantify the relative roles of the various factors believed to drive
14 regional IB rolls, and those that have done so suffer from a variety of problems. As with
15 explaining aggregate growth, there are likely to be limits in terms of how much we can learn
16 about Britain from US data.
17
18
19
20
21
22
23
24
25
26
27
28
29
30
31
32
33
34
35
36
37
38

39 In this paper we use quarterly administrative and Labour Force Survey (LFS) data for the eleven
40 British Government Office Regions (GORs) over the period 1998-2006 to estimate reduced form
41 models of male regional IB rolls. The model treats IB rolls as being determined by a combination
42 of disability prevalence, labour market and demographic factors, and unobserved time and region
43 fixed effects. Different approaches are explored to the specification of the dynamics of IB rolls,
44 including lagged dependent variable (LDV) models, error correction models (ECMs) and models
45 that focus explicitly on the flows onto and off IB. Existing quantitative studies of British IB rolls
46 have tended to skirt over issues of dynamics and/or have omitted either disability prevalence or
47
48
49
50
51
52
53
54
55
56
57
58
59
60

1
2
3 labour market factors. To a lesser extent, this is also true of existing US studies of DI rolls using
4
5 aggregate level data.
6
7

8
9
10 Much of the existing quantitative literature on IB rolls examines either only male claimants or all
11
12 claimants without distinguishing between males and females. Our view is that the determinants
13
14 of male IB claims and female IB claims may differ, perhaps because labour force participation
15
16 decisions are more complex for many women than for most men. Recent trends in IB rolls are
17
18 consistent with such differences, e.g. with the number of male IB claimants falling by ten percent
19
20 over our sample period but the number of female IB claimants rising by 14 percent. Where
21
22 studies have examined male and female claimants separately, some have found shared
23
24 determinants with similar magnitudes and others have not. To keep this paper a manageable size,
25
26 we focus on male claimants. Given the growth in the share of IB claimants that are female,
27
28 however, we also provide a link to an online appendix with a brief discussion focussed on female
29
30 claimants, and presenting results from estimating the same models on female data as are
31
32 presented here for males.²
33
34
35
36
37
38
39
40

41 In the following section the quantitative literature on growth and spatial differences in IB rolls is
42
43 reviewed. Our focus is on British data, but we also draw selectively on the more substantial US
44
45 literature. Section 3 briefly describes the data. Section 4 presents and discusses estimation results
46
47 when we treat the IB rolls as (trend) stationary. Section 5 presents and discusses first-difference
48
49 and ECM estimates when we treat IB rolls as if they are non-stationary. Section 6 presents and
50
51
52
53
54
55

56
57 ² www.erini.ac.uk/sandproject.
58
59
60

discusses estimates of the factors explicitly determining flows onto and off the IB register and discusses how these in turn affect the stock of IB claimants. Section 7 concludes.

2. Existing Quantitative Literature on IB Rolls

The theory of labour supply is most frequently called upon in the empirical economics literature on IB rolls, whether explicitly, e.g. as in Kreider and Riphahn (2000) and Autor and Duggan (2003), or implicitly, e.g. as in Molho (1989, 1991) and Disney and Webb (1991). Specifically, we can imagine a model where individuals seek to maximize the present value of their expected utility by choosing whether to participate in the labour market or claim IB in each period. This choice will be influenced by their disability status, their probability of getting a job given participation, the probability of receiving disability benefit given a claim, the value of disability benefits relative to the expected wage, and unobserved heterogeneity. There may also be some degree of state dependence (inertia within a given state). However, such models, whether at individual or aggregate level, and whether structural or reduced form, have rarely been estimated on British data.

First, there is very little in the way of quantitative time series analysis of the determinants of the British IB rolls. Disney and Webb (1991) explore estimation of a reduced form model for the number of Invalidity Benefit (IVB)³ claimants – omitting any measure of disability prevalence – using annual data from 1962 to 1989, but argue that time-series specifications are problematical given the non-stationarity of the main series and the apparent lack of a cointegrating vector between them (the IVB register, the unemployment rate and the real value of IVB). Nevertheless,

³ IVB was the predecessor to Incapacity Benefit.

1
2
3 they report estimates from a regression in levels, treating the main series as stationary,
4 suggesting a positive relationship between IVB rolls and unemployment (elasticity of 0.3 to 0.8)
5 but a counterintuitive negative relationship between IVB rolls and the real value of IVB.
6
7 Although not explicitly a study of the determinants of IB rolls, Bell and Smith (2004) estimate a
8 single equation reduced form model for the male inactivity rate 1984-2001, using the 1995
9 reforms to help identify the labour supply effects of the generosity of IB. They find the real level
10 of IB to have a positive and significant impact on inactivity (elasticity of 0.26), but do not
11 control for disability prevalence, labour market factors or other benefit characteristics beyond a
12 linear trend and time dummies. There appears to be a similar lack of published, quantitative,
13 aggregate, time series analysis of US DI rolls (see Bound and Burkhauser, 1999).
14
15
16
17
18
19
20
21
22
23
24
25
26
27
28

29 There are two existing British regional-level panel studies of IB rolls. Disney and Webb (1991)
30 estimate the proportion of a region's eligible population claiming IVB using three time points for
31 twelve UK regions between 1980 and 1988. They find intuitively signed and statistically
32 significant impacts of unemployment rates (elasticity of 0.1), real IVB rates (elasticity of 0.3)
33 and population age structure on regional IVB rolls. By once again omitting any measure of
34 disability prevalence, however, they are unable to explore the extent to which variation in
35 prevalence contributes to variation in IVB rolls and, to the extent that such variation is not
36 controlled for by the fixed effects, their estimates may suffer from omitted variable bias. The
37 study is also now somewhat dated, predating as it does the period of most rapid increase in IB
38 rolls (1988-1995), the recent sustained period of falling unemployment across Britain (1993-
39 2005), and various significant policy changes to incapacity and other benefits. More recently,
40 Faggio and Nickell (2005) use various survey data for 1972-2002 to estimate a fixed effects
41
42
43
44
45
46
47
48
49
50
51
52
53
54
55
56
57
58
59
60

1
2
3 model for the proportion of prime age men that are inactive. They do include the proportion of
4 the relevant regional population reporting a disability, which they treat as exogenous, but find it
5 plays no role in explaining inactivity rates given the (region and time) fixed effects. They also
6 find counter-intuitively signed relationships between inactivity and the real IB weekly rate (-),
7 and between inactivity and vacancy rates (+) and employment growth (+), again given the fixed
8 effects. Regional average wages have a correctly signed coefficient with elasticity of -1.
9
10
11
12
13
14
15
16
17
18
19

20 Two recent US studies examine the determinants of state-level DI rolls using panel data. To
21 study the role of economic incentives in determining DI rolls, Black et al. (2002) regress the
22 change in county-level DI rolls on change in average earnings, where this is instrumented by
23 exogenous changes in the value of coal reserves during the coal boom and bust of the 1970s/80s,
24 together with some controls, across four US states. The controls do not contain any measure of
25 disability prevalence or any other measure of the state of the labour market. Given their focus,
26 the model structure is designed to deal with the potential joint determination of average earnings
27 and DI rolls, with both likely to be influenced by disability prevalence, which is unobserved. So,
28 although Black et al. plausibly address the problem of omitted variable bias with regard to
29 disability prevalence, its omission leaves them unable to explore the extent to which its variation
30 contributes directly to variation in DI rolls. This aside, Black et al. (2002) provide convincing
31 evidence that economic incentives are important determinants of DI rolls, with county DI rolls
32 negatively and significantly related to average earnings (elasticity of around -0.4). Autor and
33 Duggan (2003) similarly estimate a simple model for the change in the proportion of working
34 age adults receiving DI at the US state level. The only included disability prevalence measure is
35 the state mortality rate (the level rather than the change), which is shown to be uncorrelated with
36
37
38
39
40
41
42
43
44
45
46
47
48
49
50
51
52
53
54
55
56
57
58
59
60

1
2
3 changes in DI rolls. It cannot be ruled out, however, that the lack of a relationship between
4 mortality rates and DI is driven by the fact that mortality rates are a very imperfect proxy for
5 disability prevalence (see Bound et al., 1991). Autor and Duggan include a measure of labour
6 demand – constructed from state industry-mix weighted changes in national sectoral employment
7 in order to ensure exogeneity – but this too is statistically insignificant. DI replacement rates,
8 however, are positive and significant with an elasticity of 0.5.
9
10
11
12
13
14
15
16
17
18
19

20 A number of US studies examine the determinants of state-level DI *applications* using panel
21 data. Parsons (1991) estimates an equation for DI applications in first differences across 42 US
22 states over the period 1977-1980. He finds an elasticity of -0.5 with respect to initial denial rates
23 (interpretable as a proxy for screening stringency), yet includes no other controls. First
24 differencing will only remove time-invariant heterogeneity across states, so Parsons implicitly
25 assumes no change in disability incidence, no change in labour demand, and no change in
26 replacement rates over the period. We have already seen, at least in the case of the latter two, that
27 these omitted factors are likely to matter in the US. Stapleton et al. (1998) estimate an equation
28 for DI application rates across US states over the period 1988-1992. They also find a significant
29 impact of denial rates, although with an elasticity half that found by Parsons (1991). They also
30 include a number of other controls, including the unemployment rate (+), demographic controls
31 and a measure of the incidence of AIDS/HIV. Autor and Duggan (2003) use a variety of
32 specifications to show the number of DI applications – in contrast to the DI stock – does depend
33 on their measure of labour demand. None of these specifications include any measure of
34 disability prevalence.
35
36
37
38
39
40
41
42
43
44
45
46
47
48
49
50
51
52
53
54
55
56
57
58
59
60

1
2
3
4
5
6
7
8
9
10
11
12
13
14
15
16
17
18
19
20
21
22
23
24
25
26
27
28
29
30
31
32
33
34
35
36
37
38
39
40
41
42
43
44
45
46
47
48
49
50
51
52
53
54
55
56
57
58
59
60

Turning to aggregate level cross section studies, Nolan and Fitzroy (2003) use British Local Authority (LA) level LFS data for three years (1999-2001), as three separate cross sections, in order to estimate what they describe as preliminary regressions for the proportion of the LA working age population claiming IB. Their equation includes hospital visits (+) and mortality rates (+) proxying for the underlying population health, some socio-economic indicators, but no labour market controls and no measure of replacement rates. McVicar (2007) uses 2003 British LA level LFS data to estimate a cross section model for IB rolls allowing for self-reported disability prevalence, average earnings and local unemployment rates to be endogenously determined. IB rolls for both men and women are shown to vary positively with disability incidence and local unemployment rates, and negatively with average earnings. The elasticities are similar for males and females – perhaps surprisingly so given the recent divergence in male and female IB rolls – at around +1 for disability prevalence, +1/2 for unemployment rates and around -1 for median earnings.

Three British studies have used cross section data at the individual level to examine the determinants of claiming disability benefits, but they are somewhat dated, all using data from the 1980s. Disney and Webb (1991) use Family Expenditure Survey data separately for 1980, 1984 and 1988 to estimate a reduced form single equation model for IVB claims, with local unemployment rates taking an intuitive (positive) sign, although they are insignificant in 1988. They include no disability measure, however, beyond a dummy for smoking, which is not treated explicitly as an instrument. Molho (1989) and Molho (1991) estimate a single equation model for the probability of entry to IVB for males and females respectively. The estimated equation includes self-reported health status (treated as exogenous), local unemployment rates, weekly

1
2
3 rate of IVB, together with further controls including some retrospective employment
4 information. He finds health, demographic factors, benefit rates and past pay to be significant,
5
6 with intuitive signs, for both men and women. Local unemployment rates are significant (with
7
8 positive sign) for women but not men, although individual history of unemployment is
9
10 significant for men. More recently, Jones et al. (2006) uses individual level data from the 2001
11
12 LFS to examine the determinants of labour force participation separately for the disabled and
13
14 non-disabled and separately by gender. They find qualifications to be a key determinant of
15
16 participation probabilities for the disabled, with significant local area dummies for women but
17
18 not for men.
19
20
21
22
23
24
25
26

27 For the US, Kreider (1998) uses cross section survey data (with some additional retrospective
28 information) from 1978 to examine the probability of a DI application in a structural model that
29 focuses on the role of uncertainty over expected earnings in influencing the probability to apply
30 for DI. The model allows a constructed measure of disability – based on various self-reported
31 information but allowing for potential justification bias – and labour market factors to influence
32 the application probability both directly and indirectly through uncertainty over earnings.
33
34 Kreider's estimates suggest that disability (+), the benefit rate (+), the proportion of applications
35 that are successful (+), and the unemployment rate (+) are all significant in the DI applications
36 equation. Kreider and Riphahn (2000) use longitudinal data over the period 1986-93 to estimate
37 a structural system of equations including a DI application equation, using a constructed measure
38 of disability like Kreider (1998) to account for potential justification bias in self-reported
39 disability status. For both men and women, the probability of applying for DI depends on
40 disability (+), amongst other things. Unemployment rates and application rejection rates are not
41
42
43
44
45
46
47
48
49
50
51
52
53
54
55
56
57
58
59
60

1
2
3 significant, and the present value of disability benefits is only significant for women. There are
4
5 no such studies using British longitudinal data.
6
7
8
9

10 **3. Data Details and Descriptive Analysis**

11
12
13
14
15 Quarterly data on the number of working age IB claimants, since 1998Q1, by region and gender,
16
17 are publicly available from the Department for Work and Pensions (DWP) website. On average
18
19 over the period 1998Q1-2006Q1, the proportion of the male working age population claiming IB
20
21 ranges from a low of 4.7 percent in the Southeast of England to a high of 13.8 percent in Wales.
22
23 Overall, as can be seen in Figure 1, the regional pattern of male IB rolls follows a north-south
24
25 divide, with the ‘north’ interpreted broadly to include Wales. This regional pattern has remained
26
27 broadly stable over the study period, despite some degree of convergence (larger falls in
28
29 ‘northern’ IB rolls). The national male IB roll fell by ten percent between 1998 and 2006.
30
31
32
33
34
35

36 <Figure 1 around here>
37
38
39
40

41 Quarterly data on the number of inflows to IB and outflows from IB are just becoming publicly
42
43 available, although these data are only available from 1999Q4 and are still described by the
44
45 Office for National Statistics (ONS) as ‘experimental’ (and therefore may be subject to revision).
46
47 Nevertheless the estimated flow data can provide a useful alternative approach to estimating the
48
49 determinants of IB rolls based on stock data only. Briefly, these estimated flow data suggest low
50
51 inflow and outflow rates for all regions over all quarters, i.e. low churn; a stable regional
52
53 hierarchy for inflow rates following the expected north-south pattern, with a downward trend
54
55
56
57
58
59
60

1
2
3 more pronounced for the ‘north’ than the ‘south’; seasonal variation in the estimated outflow
4
5 rates but again evidence suggesting a downward trend.
6
7

8
9
10 <Figures 2 and 3 around here>
11
12

13
14
15 Turning to the explanatory factors suggested in the literature, quarterly LFS data are available for
16
17 a number of variables from NOMIS and the ESRC Data Archive. These data include – by region
18
19 and age group – information on the number of men describing themselves as work-limiting or
20
21 Disability Discrimination Act (DDA) disabled, information on economic activity, information on
22
23 regional industry mix, and demographic information. These data are used to construct variables
24
25 for the proportion of working age men reporting a disability, employment and unemployment
26
27 rates by disability status and overall, a variable for the proportion of the working age population
28
29 aged 50 years or over, and a variable for the proportion of the employed working in
30
31 manufacturing (the latter two are not gender specific). Quarterly data on the median and tenth
32
33 percentile weekly earnings of full-time male employees by region are available from the Annual
34
35 Survey of Hours and Earnings (and its predecessor) again available from NOMIS and the ONS.
36
37
38
39
40
41
42

43
44 Summary statistics for these series, by region, are reported in Table 1. Notice that within-region
45
46 variation is limited for most regions and most variables, partly because the sample period is
47
48 short, but also because it coincides with a relatively stable period for IB rolls and the labour
49
50 market. This will leave the region fixed effects to pick up a lot of the ‘explanatory power’ of the
51
52 model, which is a fundamental constraint in such a regional panel exercise where it is difficult to
53
54 obtain consistent data series that go back far enough to include a lot of temporal variation, and
55
56
57
58
59
60

1
2
3 where random effects models are inappropriate because of correlation with the observed
4 explanatory variables (as in this case).⁴ These region and time fixed effects are included to
5 capture other factors, e.g. seasonal factors, benefit generosity and screening intensity, not
6 included in our data. Of course different British regions also inherited different starting positions
7 in terms of IB rolls and the other observed factors in 1998Q1 and the regional fixed effects will
8 be indistinguishable from differences in the temporal means of the observed variables.
9
10 Consequently, our focus is on how within-region changes in these observed factors over our
11 study period affect regional IB rolls, and we report the associated within R^2 s rather than overall
12 R^2 s.
13
14
15
16
17
18
19
20
21
22
23

24
25
26
27 <Table 1 around here>
28
29
30
31

32 Correlations between observed variables are reported in Table 2. As we would expect, regional
33 IB rolls are positively correlated with regional disability incidence and with unemployment rates,
34 but negatively correlated with average earnings.
35
36
37
38
39
40

41 <Table 2 around here>
42
43
44
45

46 **4. The Determinants of Male IB Stocks, Treated as Stationary**

47
48
49

50 Perhaps the first decision to make in modelling the determinants of IB stocks over time, or using
51 aggregate panel data as in this case, is whether they should be treated as stationary or non-
52
53
54

55
56 ⁴ Cross section approaches at a more disaggregated spatial level (e.g. Nolan and Fitzroy, 2003; McVicar, 2007) do
57 not face the same constraint, but can tell us little about dynamics and face a greater risk of omitted variable bias
58 because they do not control for unobserved heterogeneity across space.
59
60

1
2
3 stationary (e.g. see the earlier discussion of Disney and Webb, 1991). There will certainly be a
4
5 high degree of persistence in the quarterly series of the number of IB claimants because the
6
7 average duration of claim is around six years (see Anyadike-Danes & McVicar, 2007). A similar
8
9 argument will apply to the number of people reporting themselves disabled. If we misspecify
10
11 these series as $I(0)$ when in fact they behave like $I(1)$ series, we risk mistaking spurious
12
13 regression for a genuine causal relationship. On the other hand, two arguments suggest we might
14
15 wish to proceed under the assumption that these series are stationary. First, we express these
16
17 variables as proportions of the working age populations, which, because they are bounded,
18
19 implies they cannot be random walks. Second, we have just 33 quarters of data which is a little
20
21 on the low side for high-powered time series analysis relying on temporal asymptotics.
22
23
24
25
26
27
28

29 In the end this comes down to an empirical question – do the series behave like they have unit
30
31 roots or not – and as such we can use panel unit root tests to help provide guidance. Table 3
32
33 reports results from the t-test suggested by Im et al. (2003), which rejects unit roots for all series
34
35 except the IB rolls, the proportion of the population aged over 50 and, at 95% but not 99%, the
36
37 disability prevalence variable. Such tests have low power and other problems, however, so this is
38
39 not strong evidence for or against unit roots. Because of this uncertainty and because of the
40
41 nature of the data set, we explore estimation under both alternatives, first assuming stationarity
42
43 and, in Section 5, assuming non-stationary like behaviour.
44
45
46
47
48
49

50 We begin by estimating the reduced form Equation (1) for the proportion of a region's working
51
52 age male population claiming IB in quarter t . The included explanatory factors are the proportion
53
54 reporting a disability, denoted Dis_{it} ; the probability of getting a job given participation in the
55
56
57
58
59
60

labour market as proxied by the regional unemployment rate, U_{it} (we also explore the non-disabled employment rate as an alternative measure); and, because IB is paid at a national rate, the value of IB relative to expected wages as proxied by median regional real full time weekly earnings, W_{it} (again we explore tenth percentile earnings as an alternative measure). The probability of receiving IB given a claim will depend on an individual's disability status – captured here in aggregate by Dis_{it} – and the intensity of medical screening, which is unobserved but arguably invariant across regions and therefore captured by time fixed effects. Regional fixed effects, v_i , capture time-invariant unobserved heterogeneity (and inevitably temporal means) across regions. Because many of those on the IB register in any given quarter will have entered the register in the past we include lags of the right hand side variables, but these are restricted to the first four lags then the eight and twelfth lags because of limited observations.

The equation we go on to estimate by fixed effects is therefore as follows:

$$(1) \log IB_{it} = \sum_{t-\tau} \beta_{1\tau} \log Dis_{it} + \sum_{t-\tau} \beta_{2\tau} \log U_{it} + \sum_{t-\tau} \beta_{3\tau} \log W_{it} + v_i + v_t + \varepsilon_{it}$$

where IB_{it} denotes the proportion of the working age population claiming IB in area i at time t .

Results are presented in column 2 of Table 4 and labelled 'FE1'. The within R^2 is 0.8, although this includes the explanatory power of the (unreported) time fixed effects. Neither do we report the estimated regional fixed effects, but note that they follow a 'north'/south' pattern as might be expected from Figure 1.

1
2
3
4
5
6 According to the FE1 results, the proportion of the working age male population reporting a
7
8 disability does not affect the male IB roll, either contemporaneously or with any of the included
9
10 lags (they are jointly insignificant). These results are consistent with Faggio and Nickell's (2005)
11
12 finding that self-reported disability incidence from the General Household Survey (GHS) has no
13
14 significant impact on prime age male inactivity, and might perhaps lend some support to those
15
16 aggregate panel studies that have omitted disability prevalence altogether (e.g. Disney and
17
18 Webb, 1991). Note the conditioning on the fixed effects is likely to be important here – and
19
20 similarly for Faggio and Nickell (2005) – given cross sectional evidence for Britain that suggests
21
22 self reported disability prevalence *is* significantly correlated with IB rolls at the individual and
23
24 LA level (e.g. Molho, 1989, McVicar, 2007). The different sets of results are reconcilable if
25
26 there is substantial variation in disability prevalence across regions (captured here by the fixed
27
28 effects) but not much variation across time within regions. For our data, the former is certainly
29
30 true, although there is also *some* variation in disability prevalence over time within regions. (An
31
32 additional factor to keep in mind is that measurement error due to different self-perceptions of
33
34 disability may downward bias the estimated impact of disability prevalence in column 2 of Table
35
36 4 (see Bound, 1991).)
37
38
39
40
41
42
43
44
45

46 All but the twelfth lag of median weekly earnings is statistically significant at least at the ten
47
48 percent level, and all are negatively signed. The suggestion is, consistent with the findings of
49
50 Black et al. (2002), Autor and Duggan (2003) and Faggio and Nickell (2005), that economic
51
52 incentives – what disability benefit claimants can potentially obtain in the local labour market –
53
54 play a role in determining IB rolls. Because IB is paid at a national rate, the negative relationship
55
56
57
58
59
60

1
2
3 with average earnings implies that the higher the replacement rate, the higher the IB roll.
4
5 Summing the significant lags suggests a medium run elasticity of male IB rolls to regional
6
7 average earnings of around -0.5, smaller than that suggested by Faggio and Nickell (2005) but
8
9 closer to that suggested by Disney Webb (1991) for the UK and Black et al. (2002) for the US.
10
11 This effect disappears when median earnings are replaced by earnings at the tenth percentile,
12
13 which may be a more relevant measure for disabled workers in the lower part of the wage
14
15 distribution. This may reflect the quality of the tenth percentile earnings data, which are
16
17 employer-based rather than residence based, or it may reflect that the disabled really do react to
18
19 median earnings rather than earnings lower down the distribution.
20
21
22
23
24
25
26

27 Unemployment rates are positively related to male IB rolls, with all lags statistically significant
28
29 and with an overall medium run elasticity of 0.3. Given the concept of hidden unemployment we
30
31 might want to explore alternative measures of the state of the labour market, e.g. employment
32
33 rates. We check employment rates for the non-disabled (although these are not gender specific),
34
35 in which case the labour market effects are correctly signed but no longer statistically significant.
36
37
38
39
40

41 Of course the results discussed above are for a somewhat arbitrary model in terms of the lags
42
43 included and excluded (given the data constraints there was no testing down from a general
44
45 model to the specific model discussed above). Klerman and Haider (2004) argue that this ad hoc
46
47 approach to dynamics is a feature of much of the empirical welfare caseload literature and
48
49 suggest analysis of flows rather than stocks as the best way forward. We follow their suggestion
50
51 in Section 6, but for now explore inclusion of an LDV in a version of Equation (1) as an
52
53 alternative to an arbitrary number of lags of explanatory variables. Dropping the multiple lags of
54
55
56
57
58
59
60

the explanatory variables also allows us to more comfortably include a further two (admittedly blunt) controls for demographics and industry mix, specifically for the proportion of the working age population aged 50 years or over, Old_{it} , and the proportion of jobs that are in manufacturing, M_{it} . We therefore estimate the following LDV model, first by least squares dummy variables (LSDV) and then by Arrelano-Bond Generalized Method of Moments methods:

$$(2) \quad \log IB_{it} = \beta_0 \log IB_{it-1} + \beta_1 \log Dis_{it} + \beta_2 \log U_{it} + \beta_3 \log W_{it} + \beta_4 \log Old_{it} + \beta_5 \log M_{it} + v_i + v_t + \varepsilon_{it}$$

Results are presented in column 3 (FE2) of Table 4. The Arrelano-Bond results are identical to the LSDV results in terms of estimated coefficients, although there is a small difference in standard errors, so only the LSDV results are reported. Again, both the median earnings and the unemployment rate appear statistically significant and take the expected signs, with long run elasticities of 0.7 and -1.5 respectively. Also positive and statistically significant is the manufacturing share of employment. Disability prevalence is insignificant. Replacing the unemployment rate with the non-disabled employment rate gives the correct sign but not statistical significance; replacing median earnings with tenth percentile earnings gives the correct sign and retains statistical significance, albeit only at the ten percent level.

The key result from the LDV models, however, is that the coefficient on the LDV appears equal to one, i.e. it looks like the proportion of working age men claiming IB has a unit root over the sample period. So, we now have further cause to question the assumption of trend-stationarity for IB rolls. In Section 5 we start from the assumption of non-stationary series and consider cointegrating relationships and ECMs for IB rolls. Before moving on however, we check

1
2
3
4
5
6
7
8
9
10
11
12
13
14
15
16
17
18
19
20
21
22
23
24
25
26
27
28
29
30
31
32
33
34
35
36
37
38
39
40
41
42
43
44
45
46
47
48
49
50
51
52
53
54
55
56
57
58
59
60

robustness by re-estimating the LDV models using annual data rather than quarterly data, taking the winter quarters for each year with quarterly values replaced by annual averages. Results are presented in column 4 of Table 4 (FE3). The quarterly and annual results are similar, i.e. apparent unit roots or close to unit roots and significant and correctly signed coefficients on median earnings, unemployment rates and manufacturing share.

According to these models, are changes in the observed variables enough to account for the ten percent fall in the national male IB roll over the sample period, and do they help explain the observed regional convergence in regional IB rolls? The statistically significant determinants from the FE1 estimates are unemployment rates and median earnings, both of which have moved in the right direction to explain the national fall. With respective falls of 16 percent and 12 percent, and associated elasticities (summing the significant lags) of 0.3 and -0.5, these changes would predict a fall in male IB rolls over the period of 11 percent, i.e. very close to the observed change. According to the FE2 estimates, the observed changes in unemployment rates and median earnings will *eventually* lead to a 19 percent fall in the national male IB stock, implying that the impact of falling unemployment rates and rising real earnings have not yet fully worked through into IB rolls. Both sets of estimates also predict regional convergence in IB rolls, driven primarily by convergence in regional unemployment rates.

5. The Determinants of Male IB Stocks, Treated as Non-stationary

Given the a priori doubt over whether IB rolls could be treated as stationary, together with the evidence of unit roots from the IPS tests presented in Table 3 and from the LDV models

presented in Table 4, this section explores the determinants of IB rolls treating them explicitly as non-stationary. Our interest lies in both the long run determinants of IB rolls and the short run dynamics about the equilibrium relationship, should one exist. In other words, we are interested first in the existence or otherwise of one or more cointegrating relationships between the proportion of working age men claiming IB, disability prevalence, labour market and other factors; second in the nature of any such equilibrium relationship(s); and third in the ECM governing the dynamics around any such equilibrium relationship.

Although there are methods for testing for cointegrating relationships in panel data settings which could in principle be applied here (e.g. see Pedroni, 1999), such methods may be of limited use given the length of our sample period. For convenience, we therefore *assume* that a long run equilibrium relationship exists and proceed to estimate an ECM. Results are presented in Table 5 for both quarterly and annual data versions of the model. The discussion concentrates on estimation of unrestricted ECMs (ECM2 and ECM4 in the Table), but we also present results for ECMs with an imposed long run relationship (ECM1 and ECM3 in the Table).⁵

Specifically, we estimate the following equation:

$$(3) \quad \Delta \log IB_{it} = \Delta \beta_1 \log Dis_{it} + \Delta \beta_2 \log U_{it} + \Delta \beta_3 \log W_{it} + \Delta \beta_4 \log Old_{it} + \Delta \beta_5 \log M_{it} + \dots \\ \dots \lambda (\log IB_{it-1} - \gamma_1 \log Dis_{it-1} - \gamma_2 \log U_{it-1} - \gamma_3 \log W_{it-1} - \gamma_4 \log Old_{it-1} - \gamma_5 \log M_{it-1}) + v_i + v_t + \varepsilon_{it}$$

For the ECM2 and ECM4 models, the γ s are recoverable by dividing the estimated coefficient on the lag level terms by (minus) the estimated coefficient on the lag level dependent variable.

⁵ The ECM1 and ECM3 models impose the following restrictions based on the cross section results from McVicar (2007): $\gamma_1=1$, $\gamma_2=0.5$, $\gamma_3=-1$, $\gamma_4=0$ and $\gamma_5=0$.

1
2
3
4
5
6 As we might expect given average claim duration of six years, the ECM2 and ECM4 results
7 suggest slow convergence to the long run equilibrium following a shock. There are correctly
8 signed impacts on IB rolls from contemporaneous changes in median earnings and
9 unemployment rates and also from contemporaneous changes in the share of employment in
10 manufacturing, although this is only statistically significant for the quarterly data. The directly
11 estimated cointegrating vector is not unlike that imposed for ECM1 and ECM3, with similar
12 coefficients on median earnings ($\gamma_3=-1.2$), and on unemployment rates ($\gamma_2=0.6$), although there is
13 no long run relationship evident between IB rolls and disability prevalence in the directly
14 estimated models.
15
16
17
18
19
20
21
22
23
24
25
26
27
28

29 These results change little if we substitute non-disabled employment rates for unemployment
30 rates (opposite sign as we expect), or tenth percentile earnings for median earnings (same sign
31 but not as consistently significant as median earnings). Our conclusion from this exercise is
32 therefore that labour market factors – earnings and unemployment rates – are again the most
33 consistent determinants of IB rolls over the period; disability prevalence again does not appear to
34 have a significant relationship with IB rolls either in the short run or the long run, at least over
35 this period. Given observed changes in the labour market at national level over this period, the
36 ECM2 estimates predict an eventual fall in the male IB stock of 23 percent, again implying there
37 are further falls in male IB rolls to come. Similarly, the model predicts convergence in regional
38 male IB rolls over the period given observed convergence in regional unemployment rates.
39
40
41
42
43
44
45
46
47
48
49
50
51
52
53
54

55 **6. The Determinants of IB Flows**

56
57
58
59
60

1
2
3
4
5
6 Klerman and Haider (2004) argue that analysis of flows rather than stocks is the best way
7
8 forward for modelling welfare caseloads for precisely the kinds of reasons we have discussed in
9
10 the previous sections. IB flow data are only publicly available for British regions since 1999Q3,
11
12 however, and are described by the ONS as ‘experimental’. Nevertheless we estimate the
13
14 following expressions for the outflow rate and inflow rate, again using both quarterly and annual
15
16 data, allowing for two quarterly lags or one annual lag:⁶
17
18

$$(4) \quad In_{it} = \sum_{t-\tau} \beta_{1\tau} Dis_{it} + \sum_{t-\tau} \beta_{2\tau} U_{it} + \sum_{t-\tau} \beta_{3\tau} W_{it} + \sum_{t-\tau} \beta_{4\tau} Old_{it} + \sum_{t-\tau} \beta_{5\tau} M_{it} + v_i + v_t + \varepsilon_{it}$$

$$(5) \quad Out_{it} = \sum_{t-\tau} \beta_{1\tau} Dis_{it} + \sum_{t-\tau} \beta_{2\tau} U_{it} + \sum_{t-\tau} \beta_{3\tau} W_{it} + \sum_{t-\tau} \beta_{4\tau} Old_{it} + \sum_{t-\tau} \beta_{5\tau} M_{it} + \varphi_i + \varphi_t + \psi_{it}$$

19
20
21
22
23
24
25
26
27
28
29
30
31
32
33
34 Results are presented in Table 6. First consider quarterly inflows. Disability prevalence and its
35
36 lags are statistically insignificant. Inflows do appear, however, to be significantly related to
37
38 median earnings (albeit only the second lag and only at the ten percent level) and unemployment
39
40 rates. A one pound increase in median earnings leads to a .000003 percentage point fall in
41
42 inflows to IB, which given a sample mean of .007 corresponds to an elasticity of -0.2. A one
43
44 percentage point increase in the unemployment rate leads to an immediate .00017 percentage
45
46 point increase in IB inflows and a further two such increases in the following two quarters, with
47
48 the overall elasticity of inflows to the unemployment rate around 0.4. A one percentage point
49
50 increase in the share of employment in manufacturing leads to a -.0003 percentage point increase
51
52
53
54

55
56
57 ⁶ Even with the flow data, at least for inflows, we need to account for possible dynamics. because many claimants go
58 through a six month period on statutory sick pay (SSP) before showing up on the IB register.
59
60

1
2
3 in IB inflows, corresponding to an elasticity of -0.6. Note in each case the significance of the
4 second lag terms is consistent with the effects of SSP, i.e. the six month delay between leaving
5 employment on health or disability grounds and eligibility for IB. The annual inflow estimates
6 suggest similarly signed and broadly similarly sized impacts, although only the unemployment
7 rate terms retain statistical significance together with a now significant positive impact of the
8 population share over 50 with elasticity 0.25.
9
10
11
12
13
14
15
16

17
18
19
20 Turning to the outflows equation, again there is a marginally significant impact of lagged median
21 earnings, with elasticity of 0.1, and of lagged unemployment rates with elasticity -.05.
22 Additionally, however, there is an intuitively signed but only marginally significant impact of
23 lagged disability prevalence on outflows with an elasticity of -0.15, and – the strongest
24 determinant – a significant positive impact of the population share over 50 with an elasticity of
25 1.4. This latter effect suggests the population share over 50 may be capturing outflows from IB
26 to pensions. Only the unemployment rate and population share over 50 are significant in the
27 annual version of the model, with the same signs.
28
29
30
31
32
33
34
35
36
37
38
39
40

41 We can use the estimated flow effects to simulate what would happen to the IB stock over time
42 as a result of changes in the determinants of the flows. Here we use the estimates for the
43 quarterly flow models from Table 6, with statistically insignificant coefficients set to zero. First
44 consider a country-wide ‘shock’ to disability prevalence, say a 50 percent increase (rather large
45 but just to more clearly see the effect). Through its impact on IB outflows this would lead to an
46 increase of six percent in the IB stock over a period of 32 quarters. Second consider a similar
47 sized shock to the unemployment rate, i.e. a 50 percent increase. Acting mainly through inflows
48
49
50
51
52
53
54
55
56
57
58
59
60

1
2
3 this would lead to a 22 percent increase in the IB stock over a similar period. (As before, regional
4 convergence in unemployment rates creates pressure for convergence in regional IB rolls.) A
5 similarly sized shock to median earnings, acting through both inflows and outflows, would lead
6 to a 13 percent fall in the national IB stock over 32 quarters. A 50 percent increase in the
7 population share aged over 50 would lead to a 40 percent fall in the IB stock. Finally, a 50
8 percent increase in the manufacturing share of employment would lead to a 27 percent fall in the
9 IB stock.
10
11
12
13
14
15
16
17
18
19
20
21

22 In fact, nationally over the sample period there has been a ten percent increase in disability
23 prevalence, a 16 percent fall in unemployment rates, a twelve percent increase in median
24 earnings, a seven percent increase in the share of the working age population aged over 50, and a
25 30 percent fall in the manufacturing share of employment. Our flows model suggests that these
26 changes would have together led to a three percent fall in the overall IB stock, with positive
27 labour market and demographic changes offset by increased disability prevalence and structural
28 change. The data actually show a ten percent fall, so changes in observed variables at the
29 national level appear insufficient to explain the full extent of the fall in the national male IB roll
30 when using the flows model. The explanation for this is that most of the rest of the observed fall
31 in the national IB stock over the period is ‘driven’ in the flows model by the time dummies in the
32 outflows equation. In the absence of major administrative changes to IB, these time dummies are
33 most likely capturing the effects of changes to the age profile of IB claimants over the sample
34 period, which has seen a disproportionately large number of ageing claimants move off IB into
35 retirement.⁷
36
37
38
39
40
41
42
43
44
45
46
47
48
49
50
51
52
53
54
55

56 ⁷ Claimant data by age group show a sharp fall in the proportion of male IB claimants that are aged 60-64 since
57 1999Q3.
58
59
60

7. Summary and Conclusions

This paper provides quantitative evidence at the UK regional level on commonly suggested determinants of male IB rolls over the period 1998-2006, adopting three alternative approaches for dealing with dynamics. Conditional on time and region fixed effects, self-reported disability prevalence appears largely unrelated to IB rolls over this period. Rather the evidence suggests that male IB claimants in Britain are responding to economic incentives in terms of labour market opportunities available to them. Specifically, changes in unemployment rates and median earnings explain part of the fall in the national male IB roll over the sample period.⁸ According to the three models, observed changes in these factors over the sample period have led to falls of between three and 11 percent in the proportion of the working age male population claiming IB over this period (compared to an observed fall of ten percent nationally), with *eventual* falls predicted of up to 23 percent once all long run effects have worked through. Regional convergence in unemployment rates over the period also goes some way to explaining the observed convergence in regional IB rolls over the period.

The paper makes a number of contributions. First, it adds evidence on the determinants of British IB rolls, using recent data, to a literature that contains little in the way of existing quantitative evidence, with what there is largely dating back to the late 1980s or early 1990s. Second, the paper includes (self-reported) disability prevalence in a literature where it is often omitted as a potential determinant of IB stocks, although it appears insignificant over this period. Third, the

⁸ Note the contrast with the US where evidence suggests that DI stocks have risen as a result of falling real earnings and rising replacement rates.

1
2
3 paper pays far more attention to the dynamics of IB stocks than existing aggregate level British
4 studies and some US studies. Finally, the paper highlights the limitations inherent in such an
5 exercise when using aggregate data, and short series of aggregate data at that.
6
7
8
9

10
11
12 The British government has recently set a target of reducing IB rolls by one million over the next
13 ten years (see Freud, 2007). A variety of measures have been put in place towards this aim,
14 including the strengthening of the link between receipt of IB and job search that forms the key
15 part of Pathways to Work, as well as various changes to IB rates and eligibility rules. Tougher
16 medical screening is also on the way with expected reforms to the Personal Capability
17 Assessment in 2008. Taken together these reforms are likely to further reduce IB rolls, and early
18 evidence on Pathways suggests just that, although the impact to date has not been large (see
19 Blyth, 2006).
20
21
22
23
24
25
26
27
28
29
30
31
32
33

34 What this paper shows, however, is that the economic environment is crucial in explaining IB
35 claims, at least for males. As unemployment rates have fallen over recent years, so too have male
36 IB rolls. Indeed, the evidence in this paper suggests that the effects of falling unemployment may
37 not yet have fully worked through into male IB stocks, so that there are further falls to come. On
38 the down side, however, further significant falls in unemployment are unlikely, so policy makers
39 may have to rely on falling replacement rates if they are to meet the one million target,
40 particularly if the labour market takes a turn for the worse. This sits less comfortably with
41 government's obligation to provide a reasonable standard of living to the work limiting disabled
42 population. Tougher screening might also contribute – although the evidence here suggests that
43 recent changes in IB stocks are not closely related to changes in the number of men reporting
44
45
46
47
48
49
50
51
52
53
54
55
56
57
58
59
60

1
2
3 themselves disabled – but there are limits to how far down this road we can go if we are not to
4 deny incapacity benefits to those who really need them.
5
6
7
8
9

10 11 12 13 14 15 16 17 18 19 20 21 22 23 24 25 26 27 28 29 30 31 32 33 34 35 36 37 38 39 40 41 42 43 44 45 46 47 48 49 50 51 52 53 54 55 56 57 58 59 60

Alcock, P., Beatty, C., Fothergill, S., MacMillan, R. and Yeandle, S. (2003). *Work to Welfare: How Men Become Detached from the Labour Market*. Cambridge: Cambridge University Press.

Anyadike-Danes, M. And McVicar, D. (2007). ‘Has the boom in Incapacity Benefit claimant numbers passed its peak?’ Mimeo, Economic Research Institute of Northern Ireland, Belfast.

Autor, D.H. and Duggan, M.G. (2003). The rise in the disability rolls and the decline in unemployment. *Quarterly Journal of Economics*, **118**: 157-206.

Bell, B. and Smith, J. (2004). Health, disability insurance and labour force participation. *Bank of England Working Paper No. 218*.

Black, D., Kermit, D. and Sanders, S. (2002). The impact of economic conditions on participation in disability programs: Evidence from the coal boom and bust. *American Economic Review*, **92**: 27-50.

Blyth, B. (2006). ‘Incapacity Benefit reforms: Pathways to Work Pilots performance and analysis.’ Working Paper No. 26, Department for Work and Pensions, London.

1
2
3
4
5
6 Bound, J. (1991). Self-reported versus objective measures of health in retirement models.
7
8 *Journal of Human Resources*, **26**, 106-38.
9

10
11
12 Bound, J. and Burkhauser, R.V. (1999). Economic analysis of transfer programs targeted on
13 people with disabilities, in O. Ashenfelter and D. Card (eds) *Handbook of Labor Economics*
14 *Volume 3C*, 3417-3528 (Elsevier North Holland).
15
16
17

18
19
20
21
22 Disney, R. and Webb, S. (1991). Why are there so many long term sick in Britain? *Economic*
23 *Journal*, **101**: 252-62.
24
25

26
27
28
29 Faggio, G. and Nickell, S. (2005). Inactivity among prime age men in the UK. *CEP Discussion*
30 *Paper No. 673*, Centre for Economic Performance, London.
31
32

33
34
35
36 Fothergill, S. and Wilson, I. (2007). 'A million of Incapacity Benefit? How achievable is
37 Labour's target?' forthcoming *Cambridge Journal of Economics*.
38
39

40
41
42
43 Freud, D. (2007). *Reducing dependency, increasing opportunity: options for the future of welfare*
44 *to work*. Department for Work and Pensions, London.
45
46
47

48
49
50 Huddleston, T. (2000). Explaining the growth in the number of people claiming Incapacity
51 Benefits. Mimeo, Department for Work and Pensions, London.
52
53
54
55
56
57
58
59
60

1
2
3 Im, K.S., Pesaran, M.H. and Shin, Y. (2003). 'Testing for unit roots in heterogeneous panels.'
4
5 *Journal of Econometrics*, **115**, 53-74.
6
7

8
9
10 Jones, M. Latreille, P. And Sloane, P. (2006). 'Disability, gender and the British labour market.'
11
12 *Oxford Economic Papers*, **58**, 407-59.
13
14

15
16
17 Klerman, J.A. and Haider, S.J. (2004). 'A stock-flow analysis of the welfare caseload.' *Journal*
18
19 *of Human Resources*, **39**, 4, 865-86.
20
21

22
23
24 Kreider, B. (1998). Workers' applications to social insurance programs when earnings and
25
26 eligibility are uncertain. *Journal of Labor Economics*, **16**: 848-77.
27
28

29
30
31 Kreider, B. and Riphahn, R.T. (2000). Explaining applications to the US disability system: A
32
33 semiparametric approach. *Journal of Human Resources*, **35**: 82-115.
34
35

36
37
38 McVicar, D. (2006). Why do disability benefit rolls vary between regions? A review of evidence
39
40 from the USA and the UK. *Regional Studies*, **40**, 5, 519-533.
41
42

43
44
45 McVicar, D. (2007). What explains spatial variation in British disability benefit rolls? Mimeo,
46
47 School of Management and Economics, Queen's University Belfast.
48
49

50
51
52 McVicar, D. (2008). Why have UK disability benefit rolls grown so much? *Journal of Economic*
53
54 *Surveys*, **22**, 1, 114-139.
55
56
57
58
59
60

1
2
3
4
5
6 Molho, I (1989). A disaggregate model of flows onto Invalidation Benefit. *Applied Economics*, **21**:
7
8 237-50.
9

10
11
12 Molho, I (1991). Going onto Invalidation Benefit – A study for Women. *Applied Economics*, **23**:
13
14 1569-77.
15
16

17
18
19 Nolan, M. and Fitzroy, F. (2003). Inactivity, sickness and unemployment in Great Britain: Early
20
21 analysis at the level of Local Authorities. Mimeo, University of Hull.
22
23

24
25
26
27 Parsons, D.O. (1991). Self Screening in Targeted Public Transfer Programs. *Journal of Political*
28
29 *Economy*, **99**: 859-76.
30
31

32
33
34 Pedroni, P. (1999). 'Critical values for cointegration tests in heterogeneous panels with multiple
35
36 regressors.' *Oxford Bulletin of Economics and Statistics*, **61**, 653-70.
37
38

39
40
41 Prinz, C. (2003). *European Disability Pension Policies*. European Centre Vienna.
42
43

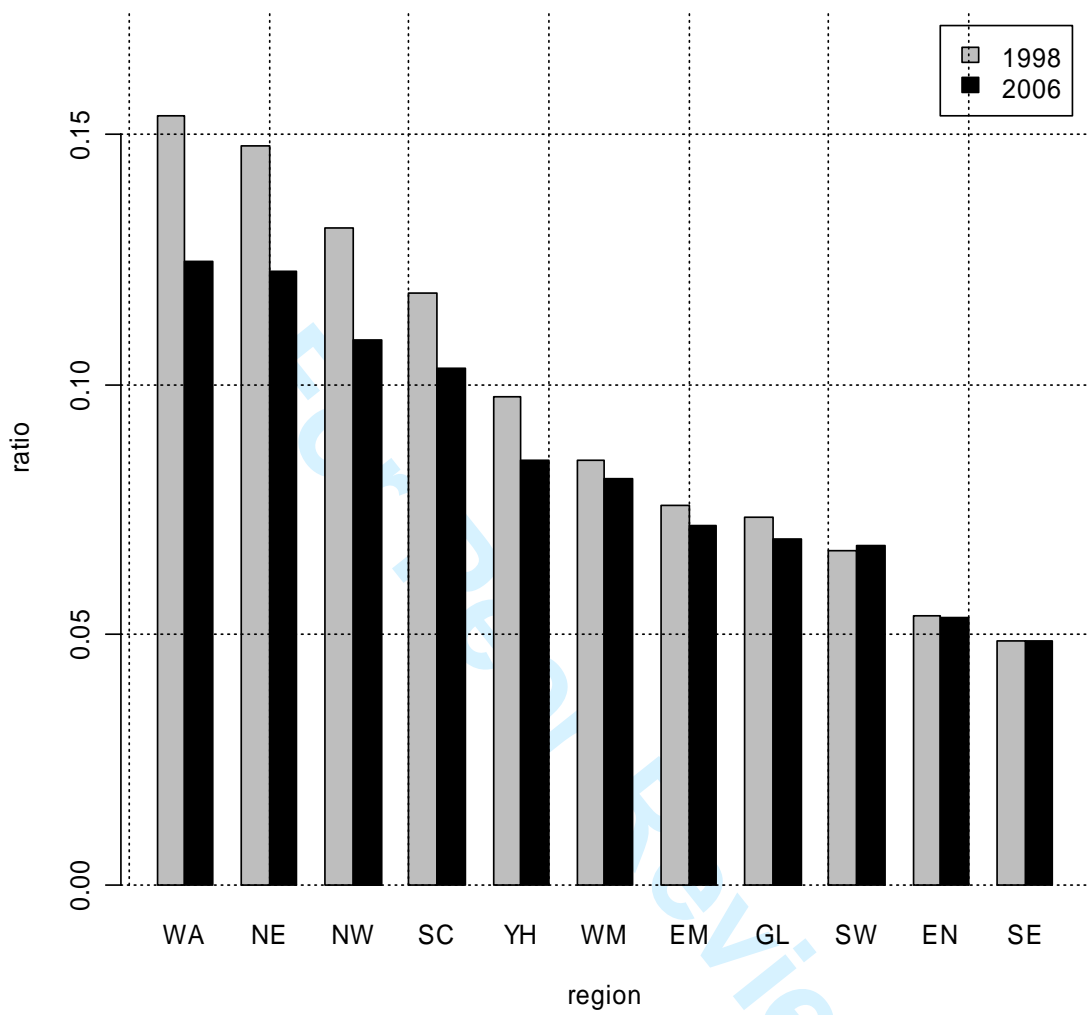
44
45
46 Rupp, K. and Stapleton, D. (1998). *Growth in Disability Benefits*. Michigan: The W.E. Upjohn
47
48 Institute for Employment Research.
49
50

1
2
3 Stapleton, D., Coleman, K., Dietrich, K. and Livermore, G. (1998). Empirical analyses of DI and
4 SSI application and award growth, in Rupp, K and Stapleton, D. (Eds.) *Growth in Disability*
5
6 *Benefits*, pp.31-92. W.E. Upjohn Institute for Employment Research, Kalamazoo, MI.
7
8
9

10
11
12 Walker, R. and Howard, M. (2000). *The Making of a Welfare Class: Benefit Receipt in Britain*.
13
14 The Policy Press.
15
16
17
18
19
20
21
22
23
24
25
26
27
28
29
30
31
32
33
34
35
36
37
38
39
40
41
42
43
44
45
46
47
48
49
50
51
52
53
54
55
56
57
58
59
60

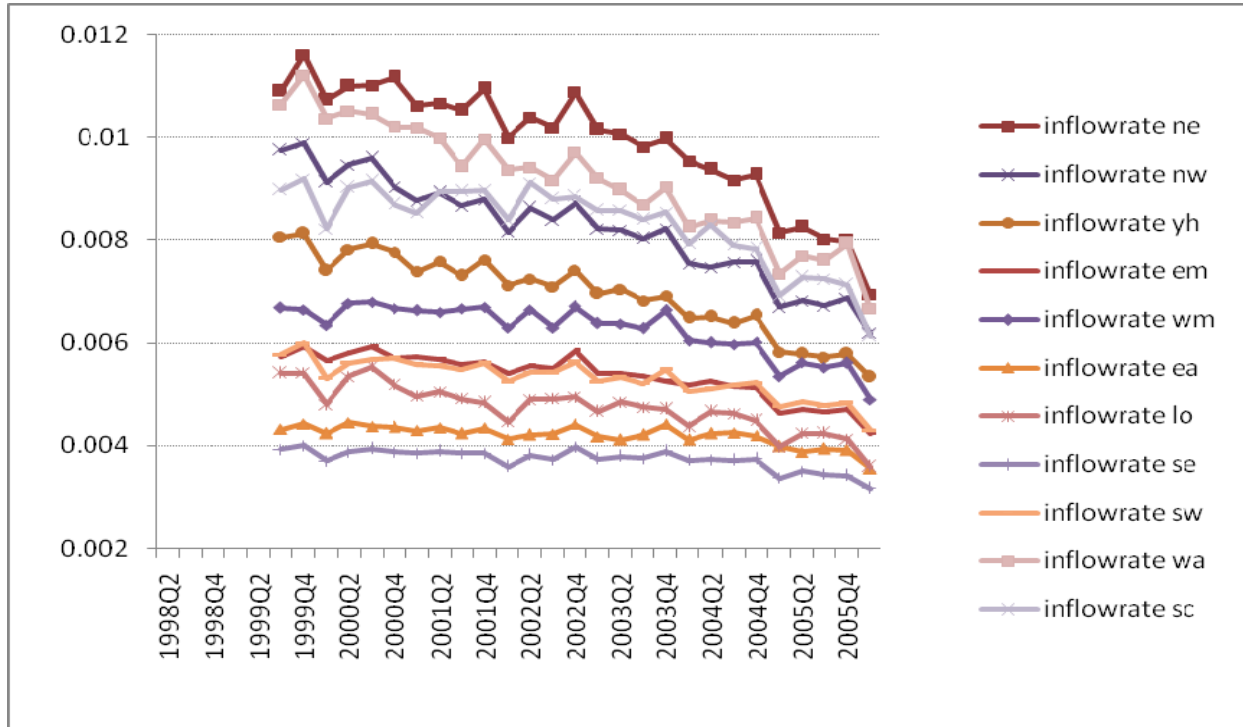
For Peer Review

Figure 1: Regional IB Rolls, Male working age, ratio to population, 1998Q1 & 2006Q1



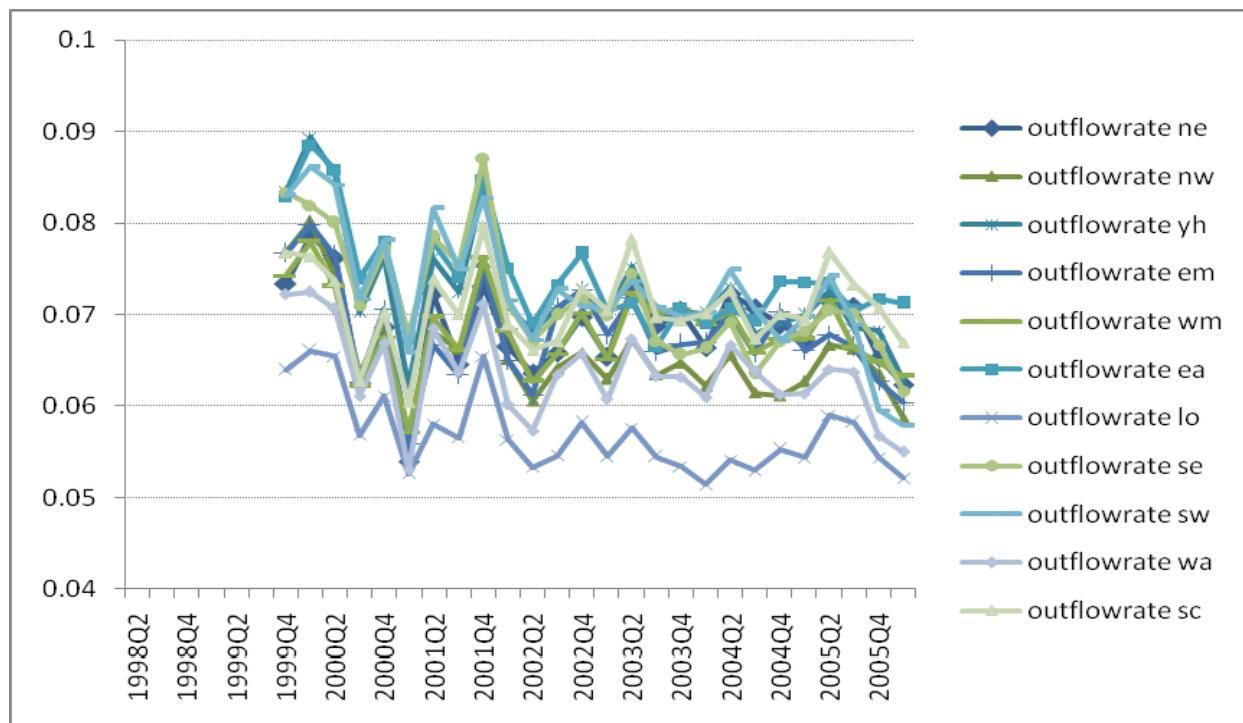
1
2
3
4
5
6
7
8
9
10
11
12
13
14
15
16
17
18
19
20
21
22
23
24
25
26
27
28
29
30
31
32
33
34
35
36
37
38
39
40
41
42
43
44
45
46
47
48
49
50
51
52
53
54
55
56
57
58
59
60

Figure 2: Male IB Inflow Rates, 1999Q3-2006Q1, Government Office Regions



Note: The vertical axis shows the proportion of the at-risk population (working age men not claiming IB) starting a claim in each quarter

Figure 3: Male IB Outflow Rates, 1999Q4-2006Q1, Government Office Regions



Note: The vertical axis shows the proportion of the IB stock ending a claim over the quarter.

Table 1: Sample Means and Standard Deviations, by Region, 1998Q1-2006Q1

	IB Claimants/Working Age Male Pop	Male Working Age Disability Prevalence	Median Real Weekly Earnings, Full-Time, £	10 th Percentile Real Weekly Earnings, Full-Time, £	Unemployment Rate	Population Share Over 50 Years Old (Males and Females)	Manufacturing Share of Employment (Males and Females)
Northeast	.136 (.006)	.254 (.015)	351 (12.7)	196 (5.61)	.086 (.015)	.250 (.007)	.163 (.024)
Northwest	.119 (.005)	.212 (.008)	372 (15.3)	203 (6.82)	.061 (.011)	.250 (.004)	.162 (.022)
Yorks & Humber	.091 (.003)	.208 (.008)	367 (13.4)	204 (7.33)	.063 (.011)	.248 (.005)	.172 (.021)
East Midlands	.074 (.001)	.187 (.010)	378 (15.9)	204 (8.52)	.051 (.005)	.255 (.006)	.203 (.025)
West Midlands	.083 (.002)	.200 (.012)	376 (14.4)	210 (7.13)	.063 (.007)	.253 (.005)	.201 (.030)
Eastern	.053 (.001)	.166 (.009)	445 (18.3)	216 (8.21)	.042 (.005)	.255 (.005)	.141 (.016)
London	.071 (.001)	.161 (.006)	518 (22.5)	252 (10.7)	.077 (.006)	.190 (.003)	.065 (.009)
Southeast	.048 (.001)	.162 (.008)	472 (15.4)	226 (9.90)	.039 (.004)	.251 (.004)	.111 (.014)
Southwest	.067 (.001)	.189 (.008)	389 (14.2)	204 (8.03)	.042 (.006)	.270 (.006)	.139 (.017)
Wales	.138 (.007)	.240 (.009)	358 (17.0)	196 (8.08)	.066 (.013)	.265 (.006)	.175 (.019)
Scotland	.111 (.003)	.202 (.007)	384 (15.3)	204 (6.21)	.073 (.010)	.244 (.007)	.124 (.020)
Britain	.090 (.030)	.200 (.030)	401 (53.4)	210 (17.5)	.060 (.017)	.249 (.020)	.150 (.044)

Note: Standard deviations in parentheses.

Table 2: Pairwise Correlations between Observed Variables

	IB Claimants/Working Age Male Pop	Male Working Age Disability Prevalence	Median Real Weekly Earnings, Full-Time, £	10 th Percentile Real Weekly Earnings, Full-Time, £	Unemployment Rate	Population Share Over 50 Years Old (Males and Females)
Disability Prevalence, Standard Definition, Male	.871					
Median Real Weekly Earnings	-.660	-.713				
10 th Percentile Real Weekly Earnings	-.541	-.603	.938			
Unemployment Rate	.662	.429	-.266	-.131		
Population Share Over 50 (All)	.123	.386	-.584	-.648	-.479	
Manufacturing Share of Employment (All)	.317	.392	-.797	-.737	.116	.485

Table 3: IPS Panel Unit Root Tests, T-test Statistics

Variable (logs)	T-test
IB Claimants/Working Age Pop	-1.23
Disability Prevalence (Standard Definition)	-2.74**
Median Real Weekly Earnings	-3.96***
Unemployment Rate	-3.56***
Population Share Over 50	-1.59
Manufacturing Share of Employment	-2.65**

Notes: *** (**) denote rejection of the null (of I(1)) at 1% (5%) levels.

Table 4: IB Stock Models Assuming Stationarity

	FE1 (quarterly)	FE2 (quarterly)	FE3 (annual)
Disability Prevalence	-.044 (.030)	-.003 (.005)	-.003 (.033)
...L(1)	.009 (.023)		
...L(2)	.011 (.020)		
...L(3)	.004 (.019)		
...L(4)	-.028 (.030)		
...L(8)	-.054 (.032)		
...L(12)	-.012 (.044)		
Median Real Weekly Earnings	-.056 (.041)	-.021** (.007)	-.237** (.076)
...L(1)	-.087* (.046)		
...L(2)	-.119** (.052)		
...L(3)	-.133** (.049)		
...L(4)	-.099** (.036)		
...L(8)	-.092** (.039)		
...L(12)	-.033 (.022)		
Unemployment Rate	.039*** (.009)	.010** (.004)	.051*** (.015)
...L(1)	.026** (.008)		
...L(2)	.039*** (.007)		
...L(3)	.022** (.009)		
...L(4)	.046*** (.006)		
...L(8)	.061*** (.016)		
...L(12)	.038** (.014)		
Population Share Over 50		.037 (.040)	.050 (.193)
Manufacturing Share of Employment		.026** (.009)	.101** (.040)
Time Dummies	Yes***	Yes***	Yes**
IB Claimants/Working Age Pop (L1)		.986*** (.008)	.920*** (.048)
R ² (within)	.797	.988	.960
Observations	220	341	77

Notes: Robust standard errors in parentheses. *** (**, *) statistically significant at 1% (5%, 10%). All variables are in logs. The dependent variable is the log of the proportion of the working age male population claiming IB.

Table 5: IB Stocks Assuming Non-Stationarity

	Quarterly Data		Annual Data	
	ECM1	ECM2	ECM3	ECM4
Δ Disability Prevalence	-.005 (.005)	-.008 (.006)	.039 (.030)	-.026 (.034)
Δ Median Real Weekly Earnings	-.010 (.006)	-.020** (.008)	-.116** (.045)	-.209** (.081)
Δ Unemployment Rate	.002 (.002)	.008** (.003)	.029* (.015)	.045*** (.012)
Δ Population Share Over 50	-.036** (.016)	-.004 (.046)	-.081 (.125)	-.059 (.150)
Δ Manufacturing Share of Employment	.017 (.015)	.037** (.014)	.052 (.084)	.113 (.070)
IB Proportion L(1)	-.006* (.003)	-.024** (.010)	-.077* (.036)	-.175** (.064)
Disability Prevalence L(1)		-.001 (.005)		-.022 (.030)
Median Real Weekly Earnings L(1)		-.029** (.011)		-.333** (.133)
Unemployment Rate L(1)		.014*** (.003)		.085*** (.018)
Population Share Over 50 L(1)		.036 (.041)		.031 (.163)
Manufacturing Share of Employment L(1)		.025** (.009)		.116** (.047)
Time Dummies	Yes***	Yes***	Yes*	Yes***
R ² (within)	.803	.823	.865	.921
Observations	341	341	77	77

Notes: Robust standard errors in parentheses. *** (**, *) statistically significant at 1% (5%, 10%). All variables are in logs. The dependent variable is the first difference of the log of the proportion of the working age male population claiming IB.

Table 6: Male IB Outflow & Inflow Rates

	Outflows		Inflows	
	Outflows 1 (quarterly FE)	Outflows 2 (annual FE)	Inflows 1 (quarterly FE)	Inflows 2 (annual FE)
Disability Prevalence	.005 (.030)	.019 (.048)	.0006 (.002)	-.005 (.005)
...L(1)	.018 (.025)	.028 (.039)	-.0006 (.003)	.0003 (.003)
...L(2)	-.048* (.024)		-.004 (.004)	
Median Real Weekly Earnings	.00002 (.00002)	-.00003 (.00002)	-.000001 (.000002)	-.000002 (.000001)
...L(1)	.00002* (.00001)	-.00001 (.00001)	-.000004 (.000003)	-.0000001 (.000002)
...L(2)	.00002 (.00001)		-.000003* (.000002)	
Unemployment Rate	-.017 (.035)	-.007 (.023)	.017*** (.004)	.006** (.002)
...L(1)	-.017 (.030)	-.038*** (.010)	.012** (.005)	.010*** (.001)
...L(2)	-.061** (.027)		.019*** (.005)	
Population Share Over 50	.398** (.153)	.208*** (.061)	-.019 (.019)	-.005 (.005)
...L(1)	.106 (.179)	-.070 (.058)	.010 (.011)	.007** (.003)
...L(2)	-.093 (.149)		.016 (.022)	
Manufacturing Share of Employment	.013 (.086)	-.018 (.022)	.012 (.016)	-.001 (.005)
...L(1)	-.050 (.056)	-.015 (.032)	.015 (.014)	.002 (.004)
...L(2)	-.121 (.086)		-.027** (.008)	
Time Dummies	Yes***	Yes***	Yes***	Yes***
R ² (within)	.862	.588	.852	.943
Observations	264	66	275	77

Notes: Robust standard errors in parentheses. *** (**, *) statistically significant at 1% (5%, 10%). Coefficients can be read as percentage point impacts of a one unit change in each case (the dependent variables are the number of outflows divided by the lagged stock and the number of inflows divided by the lagged at risk (i.e. non-claiming) population).