



HAL
open science

Options trading driven by volatility directional accuracy

Konstantinos Michael Maris, Konstantinos Nikolopoulos, Konstantinos George Giannelos, Vassilis Assimakopoulos

► **To cite this version:**

Konstantinos Michael Maris, Konstantinos Nikolopoulos, Konstantinos George Giannelos, Vassilis Assimakopoulos. Options trading driven by volatility directional accuracy. *Applied Economics*, 2006, 39 (02), pp.253-260. 10.1080/00036840500427999 . hal-00581944

HAL Id: hal-00581944

<https://hal.science/hal-00581944>

Submitted on 1 Apr 2011

HAL is a multi-disciplinary open access archive for the deposit and dissemination of scientific research documents, whether they are published or not. The documents may come from teaching and research institutions in France or abroad, or from public or private research centers.

L'archive ouverte pluridisciplinaire **HAL**, est destinée au dépôt et à la diffusion de documents scientifiques de niveau recherche, publiés ou non, émanant des établissements d'enseignement et de recherche français ou étrangers, des laboratoires publics ou privés.



Options trading driven by volatility directional accuracy

Journal:	<i>Applied Economics</i>
Manuscript ID:	APE-05-0251.R1
Journal Selection:	Applied Economics
Date Submitted by the Author:	15-Aug-2005
JEL Code:	C10 - General < , C22 - Time-Series Models < , C45 - Neural Networks and Related Topics < , G15 - International Financial Markets <
Keywords:	Decision Support, Options Trading, Forecasting, Volatility, Directional Accuracy

powered by ScholarOne
Manuscript Central™

Options trading driven by volatility directional accuracy

Abstract

Analysts have claimed over the last years that the volatility of an asset is caused solely by the random arrival of new information about the future returns from the underlying asset. It is a common belief that volatility is of great importance in finance and it is one of the critical factors determining option prices and consequently driving option-trading strategies. This paper discusses an empirical option trading methodology based on efficient volatility direction forecasts. Although in most cases accurate volatility forecasts are hard to obtain, forecasting the direction is significantly easier. Increase in the directional accuracy leads to profitable investment strategies. The net gain is depended on the size of the changes as well; however successful volatility forecasts in terms of directional accuracy was found to be sufficient for positive results. In order to evaluate the proposed methodology weekly data from CAX40, DAX and the Greek FTSE/ASE 20 stock indices were used.

Keywords: Decision Support, Options Trading, Forecasting, Volatility, Directional Accuracy

1. Introduction

Efficient valuation of options is of crucial importance for practitioners in any financial market (Chen and Leung 2003, Yoshida 2003, Andersen 2002, Buckley *et. al* 2002, Grace 2000, Pedersen 1998). Options during the last decade became a key component in the majority of investment portfolios. This development is reflected by the fact that both the turnover and the volume of these products have experienced phenomenal growth since the 1970s (Bjork 1998).

Option pricing is based on a variety of factors. From the main components that affect the premium of an option the only component that cannot be observed directly is the volatility of the underlying asset. Volatility measures the amount by which an underlying asset is expected to fluctuate in a given period of time. It significantly impacts the price of an option's premium and heavily contributes to an option's time value (Hull 1997).

Volatility can be viewed as the speed of change in the price of the underlying instrument. The higher the volatility, the more chance an option has of becoming profitable by expiration. Reviewing volatility levels can help traders determine the right option strategy (Caner and Onder 2005, Bautista 2005, Kim *et al.* 2004, Fofana and Brorsen 2001, Bautista 2003, Arago-Manzana and Fernandez-Izquierdo 2003, Bahmani-Oskooee 2002). Forecasting financial market volatility has absorbed the interest of many academics in the last decade (Sabanis 2002, Fouque *et. al* 2001, Skiadopoulos 2001, Lux and Marchesi 2000).

1
2
3 The present study discusses an empirical option trading methodology based on
4
5 volatility direction forecasts. Although in most cases accurate volatility forecasts are
6
7 hard to obtain (Maris *et. al* 2004a), forecasting the direction is a bit easier. Increase in
8
9 the directional accuracy leads to profitable investment strategies. The net gain is
10
11 always depended on the size of the changes as well, however accuracy over 60% was
12
13 found to guarantee profitable investment. In order to evaluate the proposed
14
15 methodology weekly data from CAX, DAX and the Greek FTSE/ASE 20 stock
16
17 indices were used. This study builds on earlier results presented in a study with data
18
19 from the Greek market (Maris *et. al* 2004b) where volatility point forecasts were
20
21 produced with the Theta model (Nikolopoulos and Assimakopoulos 2003,
22
23 Assimakopoulos and Nikolopoulos 2000).
24
25
26
27
28

29
30 The study is structured as follows: the next section aims to introduce the reader to the
31
32 options. In section three the options trading methodology is presented, while in the
33
34 fourth section follows an evaluation in both terms of volatility directional accuracy
35
36 and investment revenue. The last section summarizes the conclusions and future
37
38 research.
39
40
41
42

43 **2. Options**

44
45
46
47 Options confer upon the holder the right to buy or sell an asset in the future for a
48
49 given price. There are two basic types of options: A Call (C) gives the holder the right
50
51 to buy while a Put (P) gives the holder the right to sell. The price at which the future
52
53 transaction may be carried out is known as the strike price or exercise price.
54
55
56
57
58
59
60

1
2
3 There are two sides to every option contract. On one side is the investor who has
4 taken the long position (has bought the option) and on the other side is the investor
5 who has taken the short position (has sold or written the option). The writer of the
6 option receives cash upfront but has potential liabilities later. In order to ensure that
7 writers of calls and puts are able to honour their obligations to sell or buy the
8 underlying item, writers have to make a security deposit (margin). The net margin is
9 calculated daily on the basis of the client's options and futures account. The important
10 feature of options is that they do not have to be exercised (Hull 1997).
11
12
13
14
15
16
17
18
19

20
21
22 There are numerous strategies available for taking advantage of increases or decreases
23 in volatility. These strategies are called non-directional strategies or volatility
24 strategies. They are *delta* neutral strategies, where *delta* (Δ) is one of the sensitivity
25 factors that measure how an option's value changes with respect to a change in the
26 price of the underlying asset (Hull 1997). Volatility is subject to the forces of supply
27 and demand. As a result volatility will tend to rise during periods when demand from
28 options buyers is strongest and will fall when demand is weakest.
29
30
31
32
33
34
35
36
37

38 Various *delta* neutral strategies have been proposed in the bibliography (Hull 1997,
39 Briys *et al.* 1998, McMillan 2002): Long & Short Straddle, Long & Short Strangle,
40 Call & Put Back Spread, Call & Put Ratio Spread, Long & Short Butterfly, Long &
41 Short Call Christmas tree, Long & Short put Christmas tree. These strategies involve
42 different levels of risk.
43
44
45
46
47
48
49

50 **[INSERT FIGURE 1 ABOUT HERE]**
51
52
53
54
55
56
57
58
59
60

3. Options Trading Methodology

The proposed options trading methodology is consisted of a number of necessary sequential steps in order to reach an investment decision, as presented in figure 1 and analysed below:

- Weekly Closing Values (WCV) of the underlying instrument are obtained from the relevant markets. A new value is inserted each period to the database in order to update the time series.
- From WCV series two volatility (annual) series are calculated, the Historical Volatility Series (HVS) and the Implied Volatility Series (IVS) where the Black & Scholes formula is used (Hull 1997).
- One step-ahead forecast is produced for HVS with two different extrapolating methods. The Naïve method that performs very well for short-term forecasting and a Moving Average of thirteen periods- MA13 (13 weeks = one term) that performs well for the medium-term (Assimakopoulos and Vafopoulos 2000).
- A two-layer Artificial Neural Network (ANN) is trained with the Back-propagation algorithm (Haykin 1998) to combine these forecasts in order to produce as accurate forecasts as possible in terms of directional accuracy. We are interested in getting right the direction for the next period rather than the actual value itself. So we combine two point forecasts from different approaches (one short-term and one medium-term oriented) in order to get one efficient forecast for the direction of the series. The directional accuracy of the combination is better than the directional accuracy of the two methods that are weighted by the ANN (Naïve and MA13). In order to produce profitable investments accuracy over the threshold of 60% should be achieved. It must

1
2
3 be noted that the majority of Academics in the forecasting field are in favour
4 of combining, a empirical principle that was also verified in the largest ever
5 forecasting competition, the M3-competition (Makridakis and Hibon 2000); an
6 equal weighted combination of three exponential smoothing approaches
7 outperformed the performance of each method separately. However it is not
8 always the case that a combination can outperform any individual method, as
9 proved by the performance of the Theta model - a single univariate method
10 that outperformed all combinations in the very same competition
11 (Assimakopoulos and Nikolopoulos, 2000). Overall we are in favour of the
12 combinatory approach in this study as it comes for the minimisation of risk as
13 well as the usually increased accuracy.

- 24
25
26
27
28 • The one step-ahead forecast is then compared with the last actual value of the
29 two volatility series HVS and IVS. In some cases IVS has to be transformed
30 so as to be in the same level (mean) with HVS and make comparisons feasible.
31 If the forecast is greater than the last observed actual then the trader is
32 adopting a Combination of Strategies for Increasing Volatility (CSIV),
33 otherwise a Combination of Strategies for Decreasing Volatility (CSDV) is
34 taken. These two sets of positions CSIV & CSDV are explained in detail in
35 table 1. Since there are two volatility series, two comparisons are made and
36 consequently two trading suggestions are produced. In the case that the trading
37 suggestions are in the opposite direction (the HVS series comparison suggest
38 CSIV positioning while the IVS series a CSDV one or vice versa) then no
39 action is made at all for this period and the trader waits for the next period.
40
41
42
43
44
45
46
47
48
49
50
51
52
53
54

55 **[INSERT TABLE 1 ABOUT HERE]**
56
57
58
59
60

1
2
3 Thus, the CSIV trading order is consisted of two Short Calls (selling two buying
4 options) and one Long Put (buying one selling option) with strike price lower than the
5 “at the money” price of the underlying asset, three Long Calls and six Long Puts “at
6 the money”, and three Long Calls and three Short Puts with strike price greater than
7 the “at the money” price. The maximum profit from this portfolio is infinite while the
8 maximum loss is: $r = (P_{X1} + 3C_{X2} + 6P_{X2} + 3C_{X3}) - (3P_{X3} + 2C_{X1})$.

9
10
11
12
13
14
15
16
17
18 On the other hand CSDV is exactly the complimentary position where this time as
19 expected the maximum loss is infinite and the maximum profit equal to r .

20 21 22 23 **4. Evaluation**

24
25
26 The proposed methodology was evaluated based on the directional accuracy of
27 volatility forecasts, as well as the financial success of the trading suggestions.

28 29 30 31 32 **4.1 Directional accuracy**

33
34
35 The time-series under consideration consist of weekly observations (Friday closing
36 values) from three stock indices: CAC40, DAX and the Greek FTSE20. All three
37 series stand for annual volatility (calculated on the relative underlying stock indices,
38 Hull 1997). The graph of the DAX series follows in figure 2. The sample period of the
39 time-series under examination covers 238 weeks. The first 212 weekly observations
40 were used for the estimation of the models' parameters, from the period starting on
41 the 27/08/1999 to the period ending on the 17/10/2003 (weeks t : 1, 2, ... 212). The
42 authors held out the last 26 observations (weeks t : 213, ... 238) up to the period
43 ending on the 16/4/2004, in order to evaluate the models out of sample one-step-
44 ahead forecasting accuracy. Thus, the average out of sample forecasting accuracy was
45 calculated over 26 one-step-ahead errors.
46
47
48
49
50
51
52
53
54
55
56
57
58
59
60

1
2
3 The rationale behind the choice of such a small holdout (relatively to the length of the
4 series) comes from a financial economics perspective. The trading strategy should be
5 able to be compared with actual yearly or 6-months bonds and investment portfolios;
6 that is why 26 weeks were selected, however 52 weeks could be an alternative
7 holdout. In terms of the standard practise in forecasting literature (Makridakis *et al.*
8 1998), usually holdouts of about 20% - 40% of the series are selected; however this is
9 the practice in blind competitions, where the source of the data is unknown and
10 holdouts of specific length do not make any real difference.
11
12
13
14
15
16
17
18
19

20
21
22 **[INSERT FIGURE 2 ABOUT HERE]**
23

24
25 Assimakopoulos and Vafopoulos (2000) conducted an extensive survey of available
26 forecasting techniques for stock market volatility. In the present study a forecasting
27 competition was conducted with eleven different approaches from that study: the
28 random walk model (NAÏVE); the mean model (MEAN); the exponential smoothing
29 model (SES) (Makridakis *et al.*, 1998); Moving Averages of 4, 8, 13 and 26 weeks
30 (MA4, MA8, MA13, MA26); and four models from the ARCH family (ARCH,
31 GARCH, EGARCH, TARARCH) (Alexander, 1999).
32
33
34
35
36
37
38
39
40
41

42 Those methods were proven inadequate for the Greek market in an earlier study
43 (Maris *et al.* 2004a). Having in mind that the financial evaluation is going to be
44 conducted only in the Greek Market where detailed data are available, the authors
45 decided to use ANN as mentioned earlier in order to combine the forecasts from
46 some of these simpler approaches.
47
48
49
50
51
52
53
54
55
56
57
58
59
60

1
2
3 Instead of challenging the forecasting accuracy of these models in terms of point-
4 forecasts oriented error metrics (RMSE or MAPE, Makridakis *et al.* 1998) the authors
5 decided to use Directional Accuracy measures. The rationale behind this decision is
6 twofold: First it is much easier to forecast whether volatility is going to increase or
7 decrease rather than estimating a point forecast, and secondly the trading strategies
8 that will be used are based on the sign of the volatility change.
9

10
11
12
13
14
15
16
17 The directional accuracy is measured as a percentage of the times you get right the
18 direction of the volatility forecast divided by the times you make a forecast. For our
19 research we conducted 26 forecasts for each Stock Market. So the Average
20 Percentage is calculated as the ratio of the successful volatility direction over the 72
21 attempts across the three different markets. The average ranking is calculated a bit
22 differently. The methods are ranked for each separate market according to their
23 directional accuracy and then an average of these three positions is taken. The
24 combination from an ANN of forecasts from the NAIVE method and MA13 proved to
25 be the best with both average measures (Table 2, Average Percentage 67.95% and
26 Average Ranking 2.33) as a result of taking the first place in CAC40 (Directional
27 Accuracy 80.77%), the fourth place in DAX (Directional Accuracy 57.69%) and the
28 second place in FTSE20 (Directional Accuracy 65.38%). The NAIVE method
29 provides by definition 50% directional accuracy as it does not provide sign.
30
31
32
33
34
35
36
37
38
39
40
41
42
43
44
45
46
47

48 **[INSERT TABLE 2 ABOUT HERE]**
49
50
51
52
53
54
55
56
57
58
59
60

4.2 Position Evaluation

In order to evaluate the proposed trading methodology, we made transactions of 100 contracts on the FTSE/ASE 20 index in a period of 26 weeks (six months), from the 24/10/2003 to 16/4/2004. The index multiplier is 5. The cost of a contract in Euros is given by multiplying the price with the index multiplier. A week later we closed our positions by taking the opposite positions no matter if we had a loss or a profit. Similarly we conducted transactions with directional forecasts from other forecasting approaches over 26 weeks and computed the total profit/loss of our positions. The results of this real-data simulation are shown in Table 3.

[INSERT TABLE 3 ABOUT HERE]

All the results presented in table 3 are extracted using the same trading strategy. The only difference in each case is the method that produced the forecasts for the direction of the volatility. It is clear that the best method (ANN_NAÏVE_MA13) in terms of directional accuracy did not produce the best financial results. However it produced better financial results than established methods (as the ARCH family) and better results than all the simple methods with the exception of the moving average of twelve weeks

This result was partially expected, as a successful directional forecast does not guarantee maximisation of the profit. This is due to the fact that one successful forecast for only one period could cause major profit, more than two or three other successful forecasts. This has to do with the fact that not only the direction counts but the size of the volatility moves as well. Thus, the next step of the methodology should be to find the best method in terms of directional accuracy percentage but restricted to

1
2
3 those directional moves sized over a certain threshold i.e. 5%; those that resulted in
4 having a large profit. Nevertheless, the fact that the proposed methodology was
5 profitable over a period of half a year, with 26 continuous trades, is by all means very
6 promising.
7
8
9
10

11 12 13 **5. Conclusion**

14
15
16 This study presented an empirical option trading methodology based on forecasts for
17 the direction of the volatility of the underlying financial index. The proposed
18 methodology is easy to apply, easy to embed in an Information System and requires
19 standard inputs available freely via the Internet for the majority of stock markets.
20
21
22
23
24
25
26

27 A high directional accuracy leads to profitable investment strategies, however the net
28 end result always depends on the size of changes as well. An empirical threshold of
29 60% of successful volatility forecasts was found to be sufficient for creating
30 profitability within a period of six calendar months. The proposed volatility
31 forecasting approach was validated on weekly data obtained from CAX40, DAX and
32 the Greek FTSE/ASE 20 stock indices while the trading strategy using data only from
33 the Greek index.
34
35
36
37
38
39
40
41
42
43

44 For the production of volatility forecasts an ANN was employed in order to combine
45 the forecasts from two simpler approaches: the short-term oriented Naïve method and
46 the mid-term oriented Moving Average of thirteen weeks model. This method proved
47 to perform best across the three different markets. The forecasting method is by
48 definition more robust due to the combinatory nature.
49
50
51
52
53
54
55
56
57
58
59
60

1
2
3 The proposed methodology produced profit for a period of six months (26 weeks). For
4
5 each week the methodology provides two trading suggestions - one based on the
6
7 historical volatility and another on the implied one. The robustness of the method is
8
9 once more verified, as both trading orders are on average profitable over the testing
10
11 period. However, while applying the same trading strategy to volatility forecasts from
12
13 less accurate models, some interesting results came up; some simpler approaches
14
15 produced better financial results. This was partially expected, as a successful
16
17 directional forecast does not guarantee maximisation of the profit. This is due to the
18
19 fact that one successful forecast for only one period could cause major profit, more
20
21 than two or three other successful forecasts.
22
23

24
25
26 Future research should be focused towards finding the best method in terms of
27
28 directional accuracy but restricted to those directional moves over a certain margin;
29
30 these changes are expected to result in big profits. Also more practical issues should
31
32 be addressed in order to test the methodology with more frequent data i.e. daily data
33
34 or intraday data. Finally the proposed methodology should be embedded in a
35
36 prototype information system in order to be widely tested in other stock markets
37
38 (FTSE, DJIA, NASDAQ), and become more generic. Nevertheless, the evaluation
39
40 results and the simplicity of the proposed approach make it rather attractive and by all
41
42 means worth expanding.
43
44
45
46
47

48 **Acknowledgement**

49
50 The authors would like to thank Mr. Michael C. Handrinos from Lancaster University
51
52 for his comments and suggestions in the final revision of this paper.
53
54
55
56
57
58
59
60

References

- Alexander, C. (1999) *Risk Management and Analysis, Volume 1: Measuring and Modelling Financial Risk*, John Wiley & Sons, Chichester.
- Arago-Manzana, V. and Fernandez-Izquierdo, M.A. (2003) Monthly seasonality of the returns and volatility of the IBEX-35 index and its futures contract, *Journal of Applied Economics Letters*, 10 (3), 129-133.
- Andersen, L. (2002) How Options Analysis Can Enhance Managerial Performance, *European Management Journal*, **20**(5), 505-511.
- Assimakopoulos, V. and Nikolopoulos, K. (2000) The Theta model: a decomposition approach to forecasting, *International Journal of Forecasting*, **16** (4), 521-530.
- Assimakopoulos V. and Vafopoulos M. (2000) Financial Volatility Forecasting, *Economic & Financial Computing*, **10** (3), Autumn.
- Bahmani-Oskooee, M. (2002) Does black market exchange rate volatility deter the trade flows? Iranian experience, *Applied Economics*, 34 (18), 2249-2255.
- Bautista, C.C. (2005) How volatile are East Asian stocks during high volatility periods?, *Journal of Applied Economics Letters*, 12 (5), 319-326.
- Bautista, C.C. (2003) Stock market volatility in the Philippines, *Journal of Applied Economics Letters*, 10 (5), 315-318.
- Bjork, T. (1998) *Arbitrage Theory in Continuous Time*, Oxford University Press, Oxford.
- Briys, E., Mai, H.M., Bellalah, M. and de Varenne, F. (1998) *Options, Futures and Exotic Derivatives, Theory, Application and Practice*. John Wiley & Sons, Chichester.

- 1
2
3 Buckley, A., Tse, K., Rijken, H. and Eijgenhuijsen, H. (2002) Stock Market Valuation
4 with Real Options: lessons from Netscape, *European Management Journal*, **20**
5 (5), 512-526.
6
7
8 Caner, S. and Onder, Z. (2005) Sources of volatility in stock returns in emerging
9 markets, *Applied Economics*, **37** (8), 929-941.
10
11 Chen, A.S. and Leung, M.T. (2003) Option straddle trading: Financial performance
12 and economic significance of direct profit forecast and conventional strategies,
13 *Journal of Applied Economics Letters*, **10** (8), 493-498.
14
15
16 Fofana, N.F. and Brorsen, B.W. (2001) GARCH option pricing with implied
17 volatility, *Journal of Applied Economics Letters*, **8** (5), 335-340.
18
19 Fouque, J-P., Papanicolaou, G. and Sircar K.R. (2001) From the Implied Volatility
20 Skew to a Robust Correction to Black-Scholes American Option Prices,
21 *International Journal of Theoretical and Applied Finance*, **4** (4), 651-675.
22
23
24
25
26 Grace, B.K. (2000) Black-Scholes option pricing via genetic algorithms, *Journal of*
27 *Applied Economics Letters*, **7** (2), 129-132.
28
29
30
31 Haykin, S. (1998) *Neural Networks: A Comprehensive Foundation* (International
32 Edition), Pearson US Imports & PHIPES.
33
34
35 Hull, C.J. (1997) *Options, Futures and Other Derivatives*. (3rd Edition), Prentice Hall,
36 London.
37
38
39
40 Kim, M.H., Kim, G.R. and Kim, M. (2004) Stock market volatility and trading
41 activities in the KOSPI 200 derivatives markets, *Journal of Applied Economics*
42 *Letters*, **11** (1), 49-53.
43
44
45
46
47 Lux, T. and Marchesi M. (2000) Volatility Clustering in Financial Markets A
48 Microsimulation of Interacting Agents, *International Journal of Theoretical and*
49 *Applied Finance*, **3** (4), 675-702.
50
51
52
53
54 McMillan, L.G. (2002) *Options As a Strategic Investment (4th Edition Study Guide)*,
55 Prentice Hall Press, New York.
56
57
58
59
60

- 1
2
3 Makridakis S. and Hibon, M., (2000), The M3-Competition: Results, conclusions and
4 implications, *International Journal of Forecasting* 16, pp. 451-476.
5
6
7 Makridakis, S., Wheelwright, S., & Hyndman, R., (1998). *Forecasting Methods and*
8 *Applications. (3rd Edition)*, John Wiley & Sons, New York.
9
10
11 Maris, K., Pantou, G., Nikolopoulos, K., Pagourtzi, E. and Assimakopoulos, V.
12 (2004a) A study of financial volatility forecasting techniques in the FTSE/ASE
13 20 index, *Journal of Applied Economics Letters*, **11** (7), 453-457.
14
15
16
17
18 Maris, K., Metaxiotis, K., Pantou, G., Nikolopoulos, K., Tavanidou, E. and
19 Assimakopoulos, V. (2004b) D-TIFIS: A decision support system for options
20 trading, *Information Management & Computer Security*, **12** (1), 45-65.
21
22
23
24 Merton, R. C., (1973) Theory of Rational Option Pricing, *Bell Journal of Economics*,
25 **4** (1), 141-183.
26
27
28
29 Natenberg S. (1994) *Option Volatility & Pricing: Advanced Trading Strategies and*
30 *Techniques, 2nd edition*, Mc Graw Hill.
31
32
33 Nikolopoulos, K. and Assimakopoulos, V. (2003) Theta Intelligent Forecasting
34 Information System, *Industrial Management and Data Systems*, **103** (9), 711-
35 726.
36
37
38
39 Pedersen, W.R. (1998) Capturing all the information in foreign currency option
40 prices: solving for one versus two implied variables, *Applied Economics*, 30
41 (12), 1679-1683.
42
43
44
45 Skiadopoulos, G. (2001) Volatility Smile consistent Option Models A Survey,
46 *International Journal of Theoretical and Applied Finance*, **4** (3), 403-437.
47
48
49 Sabanis, S. (2002) Stochastic Volatility, *International Journal of Theoretical and*
50 *Applied Finance*, **5** (5) 515-530.
51
52
53
54 Yoshida, Y. (2003) The valuation of European options in uncertain environment,
55 *European Journal of Operational Research*, **145** (1), 221-229.
56
57
58
59
60

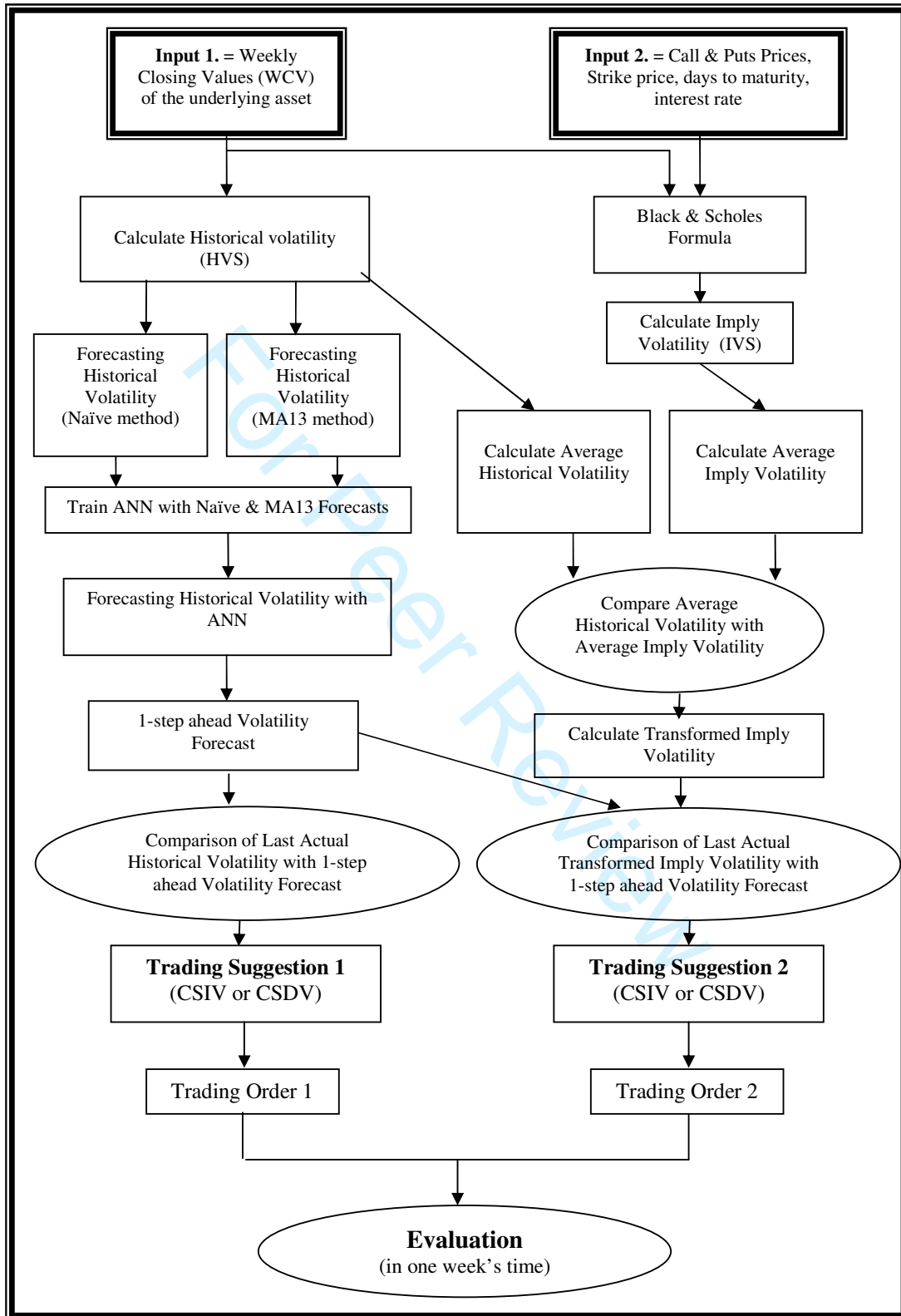
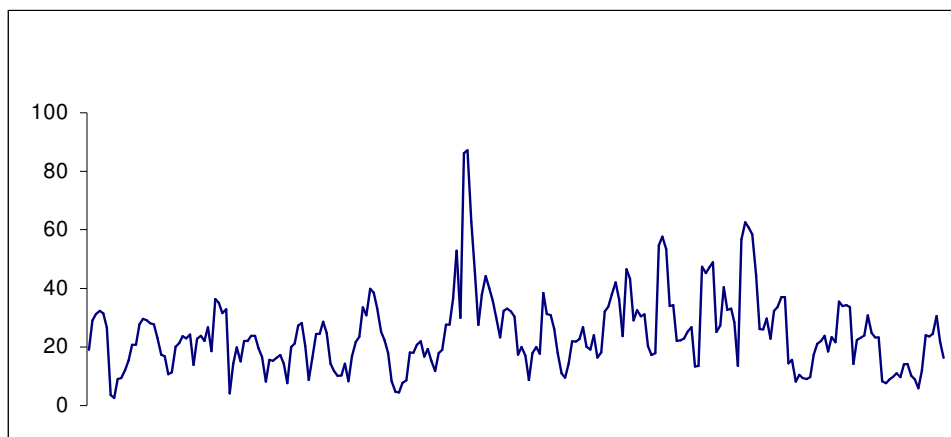
Figure 1. Flow diagram for the proposed methodology.

Table 1. Combination of Strategies for Increasing Volatility (CSIV)

CSIV position			
Strategies	Strike Price*		
	X1 ($<X_2$)	X2 “at the money”	X3 ($>X_2$)
Long Straddle		+C, +P	
Long Strangle	+P		+C
Call Back Spread		-C	+2C
Put Back Spread		+2P	-P
Short Butterfly Call	-C	+2C	-C
Short Butterfly Put	-P	+2P	-P
Short Call Christmas Tree	-C	+C	+C
Short Put Christmas Tree	+P	+P	-P
Combination of Strategies	$-2C_{X1} + P_{X1}$	$+3C_{X2} + 6P_{X2}$	$+3C_{X3} - 3P_{X3}$
	+:Buy, -: Sell, C: Call, P: Put		

Figure 2. Annual volatility (calculated on the German DAX stock index)



Or Peer Review

Table 2. CAC40, DAX, FTSE20 - Directional Accuracy (Rolling over 26 one-week ahead forecasts)

METHOD	Average Percentage	Average Ranking
ANN_NAIVE_MA13	67.95%	2.33
ANN_NAIVE_SES	64.10%	3.00
ANN_SES_MA13	62.82%	3.33
MA13	60.26%	4.00
ANN_NAIVE_ARCH	58.97%	4.33
ANN_NAIVE_EGARCH	58.97%	4.33
MA8	57.69%	4.67
MA26	57.69%	4.67
GARCH	56.41%	5.00
TARCH	56.41%	5.00
ARCH	55.13%	5.33
EGARCH	55.13%	5.33
MEAN	55.13%	5.33
MA4	51.28%	6.33
NAÏVE	50.00%	6.67
SES	42.31%	8.67

Table 3. Position evaluation over 26 weeks in Euros (FTSE20)

Forecasting Method	Trading Order 1	Trading Order 2	EVALUATION
ANN_SES_MA13	63140	109020	172160
MA12	-16280	186360	170080
ANN_NAIVE_SES	78040	84000	162040
ANN_NAIVE_EGARCH	105940	41440	147380
ANN_NAIVE_MA13	58440	65840	124280
ARCH	-184160	255000	70840
EGARCH	-184160	255000	70840
SES	121480	-69420	52060
GARCH	-184160	161960	-22200
ANN_NAIVE_MA5	-197840	-31280	-229120