



HAL
open science

Synthesis on biology of Common European Cockle *Cerastoderma edule*.

Laurent Dabouineau, Alain Ponsoero

► **To cite this version:**

Laurent Dabouineau, Alain Ponsoero. Synthesis on biology of Common European Cockle *Cerastoderma edule*. 2009. hal-00581394

HAL Id: hal-00581394

<https://hal.science/hal-00581394v1>

Preprint submitted on 30 Mar 2011

HAL is a multi-disciplinary open access archive for the deposit and dissemination of scientific research documents, whether they are published or not. The documents may come from teaching and research institutions in France or abroad, or from public or private research centers.

L'archive ouverte pluridisciplinaire **HAL**, est destinée au dépôt et à la diffusion de documents scientifiques de niveau recherche, publiés ou non, émanant des établissements d'enseignement et de recherche français ou étrangers, des laboratoires publics ou privés.

Synthesis on biology of Common European Cockle *Cerastoderma edule*.

Laurent Dabouineau* Alain Ponsoero **

* Laboratoire de Biologie et Ecologie, Université U.C.O. Bretagne Nord BP 90431 F-22200 Guingamp-France

** Réserve Naturelle Nationale de la baie de Saint-Brieuc - Site de l'étoile F-22120 Hillion- France

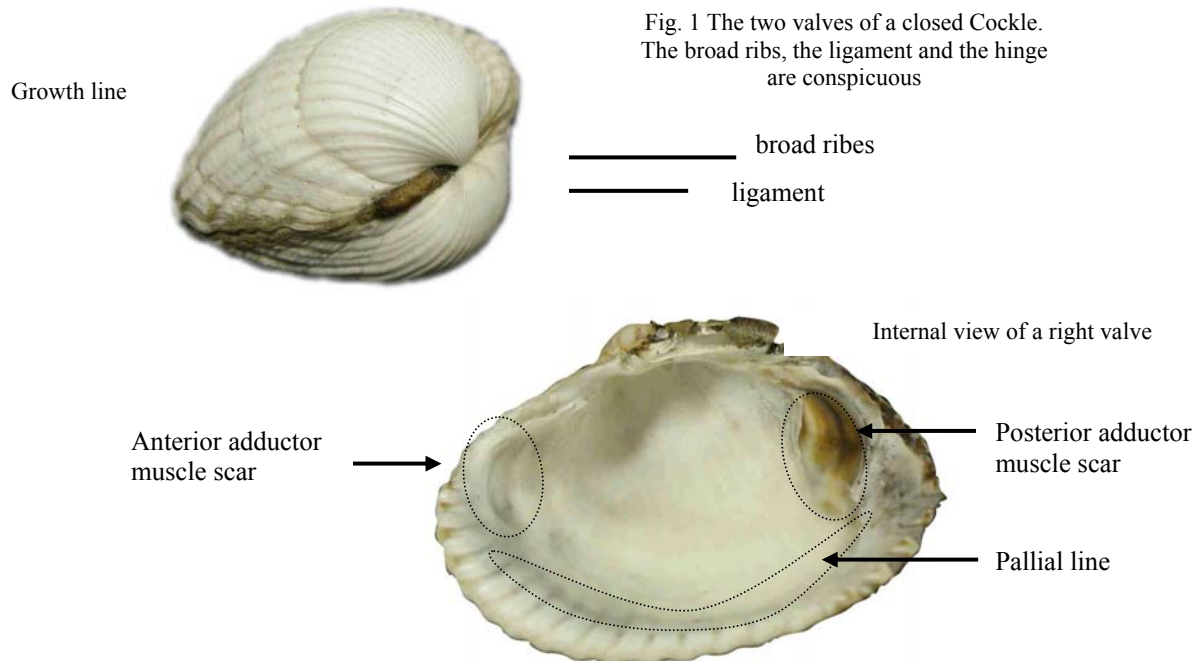
1 - Taxonomy

Phylum: *Molluscs*
Class: *Bivalvia*
Order: *Veneroidea*
Family: *Cardiidae*

Genus: *Cerastoderma*
Species: *edule*
Description : Linné (1758)
Synonym (before 1950) *Cardium edule*

2 - Anatomy of the shell

- The two valves are quite similar, but inequilateral
- Broadly oval, up to 50mm long
- Shell with 22 to 28 conspicuous broad ribs, closely spaced
- External ligament, rubbery appearance, that tends to open shell permanently (Fig.1)
- Two adductor muscle scars (these muscles serve to close the shell)
- Pallial line without sinus

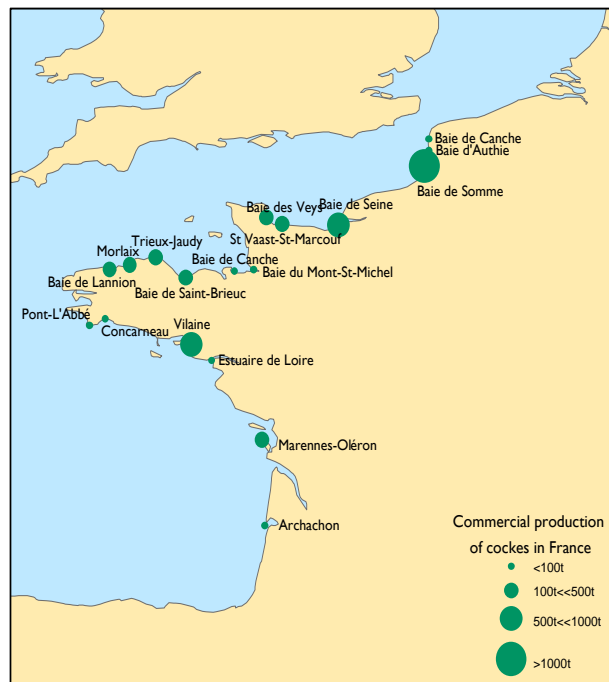


3 - Distribution

The Cockle (*Cerastoderma edule*) is one of the most common and widely distributed bivalve species on tidal flats along the coast of most of European countries. Its distribution area extends from Norway to Senegal. It's an ubiquitous species which can be found in estuaries and sandy bays (Tebble, 1966), particularly in sandy mud, sand or fine gravel.

Main stocks are in Netherlands (Waddenze, Zeelande), United Kingdom (Wash, Thames estuary, Horecambe and Caernarfon bays), in Spain (Galice, Mediterranean coast). In France, Cockle is widely distributed along the coastline. From north to south, the more constant and regular stocks are: around Dunkerque, Bays of Canche, Somme, Seine, Veys, Mont Saint-Michel, Saint-Brieuc and many others bays of northern Brittany. Further south, Cockle can be found in Bay of Vilaine, Baule, Loire estuary, Bassin de Marennes-Oléron, Bassin d'Arcachon (Quéro & Wayne, 1998).

Fig. 2 : Main stocks of Cockle (*Cerastoderma edule*) in France (Quéro & Vayne, 1998)



Cockle are found on a large part of the intertidal area. For a given geographical location, for example the scale of a bay, the distribution is aggregative (Fig.3) as for many endogean benthic species (Reys, 1971; Elliot, 1979; Downing, 1979). Densities can vary from a few individuals per square meters to thousands. For example, the maximum density observed in the Bay of Saint-Brieuc is 2752 individuals/m² in 2008. Densities of 5000 individuals/m² have been observed at Oostershelde in Belgium in 1985 (Coosen *et al.*, 1994). Higher densities are observed around the mid-tidal level (Fig.4).

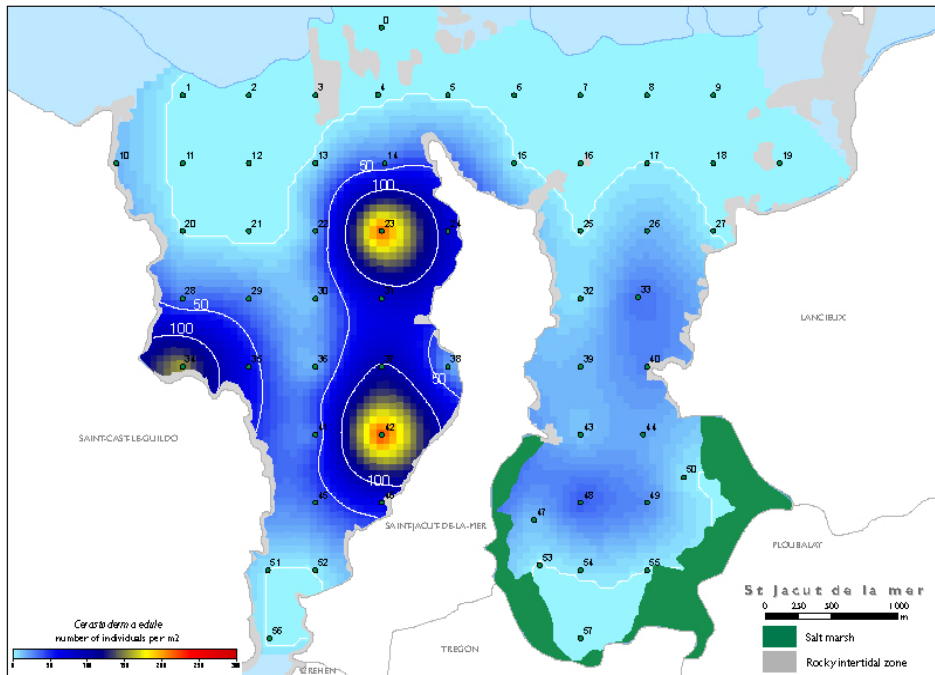


Fig. 3: Repartition of *Cerastoderma edule* at Saint-Jacut de la mer (Côtes d'Armor) in 2008. (Datan and map not published: Vivarmor Nature, 2008)

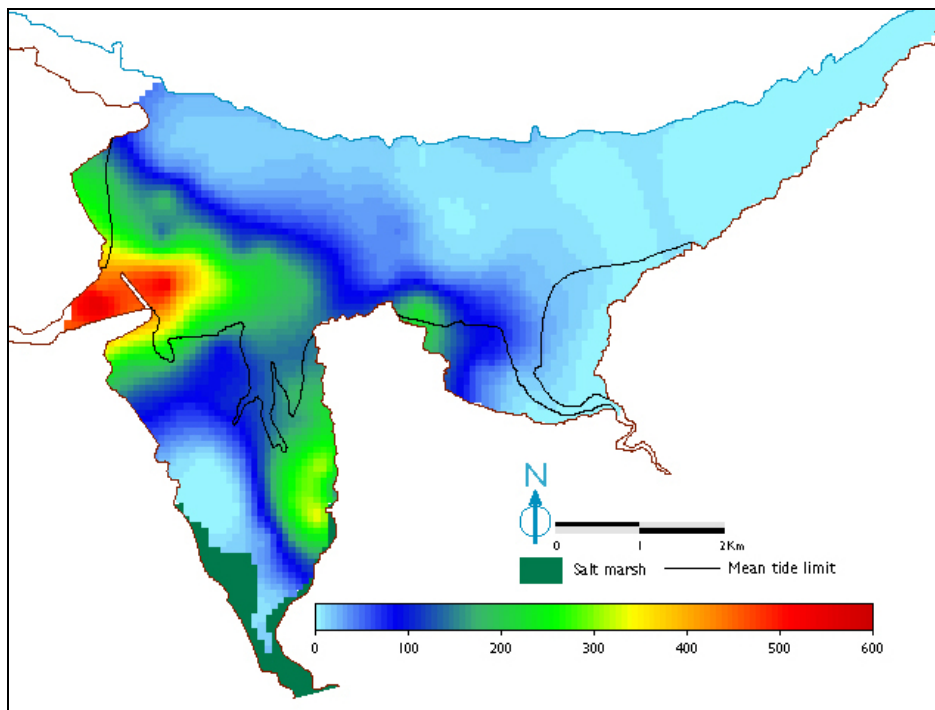


Fig. 4: Repartition of *Cerastoderma edule* in the Bay of Saint-Brieuc (average 2001-2008)

4 – Lifestyle

The Cockle is a burrowing animal. By means of its muscular foot the cockle burrows rapidly in the sediment (Fig.5). Thus, cockle is protected from waves as many aquatic and terrestrial predators: crabs, waders, humans...

Diet: active suspension feeder

The Cockle filters actively water thanks to its two siphons (inhalant and exhalant) positionned on the surface of the sediment. Water is filtered through gills to keep phytoplankton, zooplankton and organic particles. These elements are grouped together into a mucus and make for the mouth thanks to cilia, like on a conveyor belt.

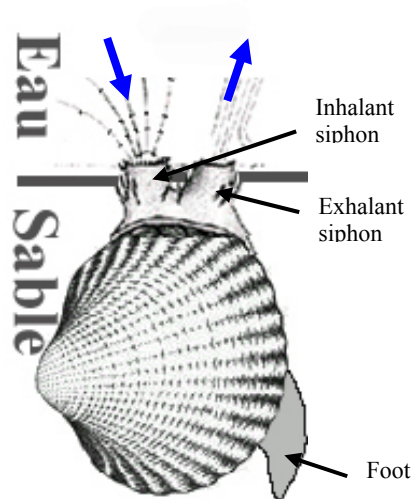


Fig. 5 : Cockle in the sediment

Digestion takes place in an intestine to enzymes and bacteria. The crystal-line style is translucent like a glass rod (fig.6). It's an enzyme reserve used progressively by the cockle during the digestion.

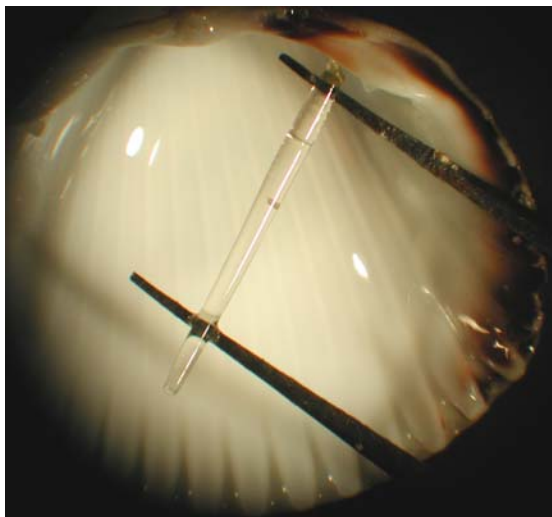


Fig. 6: enzymatic cristal-line style (extrated from the digestive tract for the picture)



Fig.7: Cockle group on the surface of the sediment (bay of Saint-Brieuc)

Alive cockles can be found on the sediment surface on the intertidal zone (Fig. 7). They generally represent a little part of the global population. These cockles themselves come back up to the surface of the sediment, or have come loose due to displacement of sediment, caused for example by modifications of the banks of the rivers which go all over the intertidal zone. These cockles are generally very weakened and have lost their burrowing capacities.

The burrowing capacity is here compared on an experimental basis. Cockles are placed on the sediment (5cm deep) under 5cm of water, and spaced out a few centimeters from each other. Burrowed cockles are counted 2 hours later. Results are shown fig. 8.

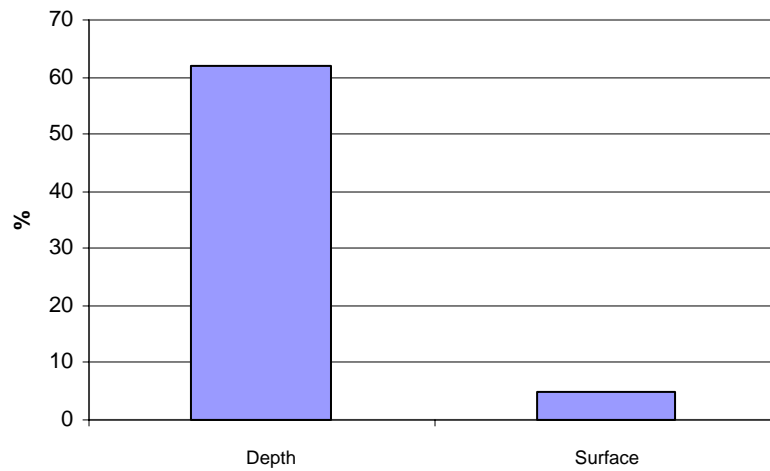


Fig. 8: The burrowing capacity of cockles from deep (n=127) and cockles found on the surface of the sediment (n=139), in percent of burrowed cockles after two hours (U.C.O., june 2003, not published)

To confirm that these cockles are weakened and not capable to burrow, a condition index (Ic) is calculated to get valuation of the state of their health. The IC is the flesh-to-shell ratio. It enables to bring out the loss of weight (fig. 9). Cockles found on the surface of the sediment weigh 25% less than ones found burrowed in the sediment (dry weight). These cockles are very weakened, probably dying.

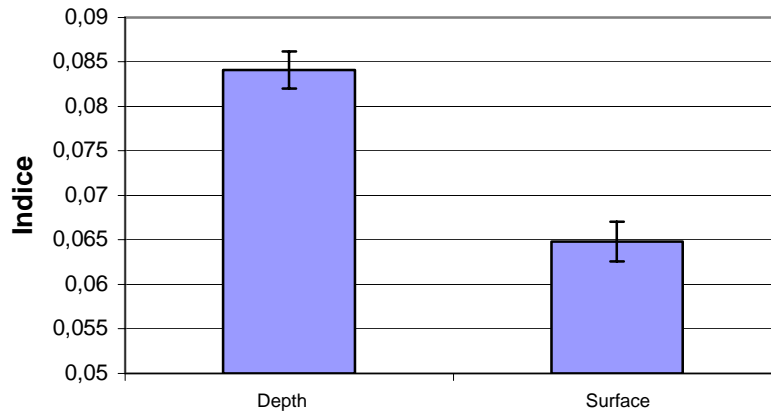


Fig. 9: condition index (IC= ash free dry mass of flesh / dry mass of shell) \pm standard-Error of Cockles found burrowed in the sediment (n=60) and on the surface (n=61), (Anova test $p < 0,01$). (U.C.O., june 2003, not published)

5 – Reproduction

Cockles generally live two to four years on average, but they can exceptionally reach ten years old. The phenomena of reproduction are clearly influenced by the physical environment, notably the increase of the temperature, more than an absolute value of it. The sexual maturity is generally reached during the second year (size between 13 and 16 mm, 15 to 18 months). Some authors have noticed a reproduction during the first year if cockles grow very fast (Seed & Brown, 1977). It seems that, sexual maturity depends on the size more than the age of individuals (Kristensen, 1957; Hancock & Franklin, 1972; Sauriau, 1992). Sexual maturity can be reached in a few months in the bay of Sommes (Lemoigne *et al.*, 1988) and up to 2 years in Northern Ireland (Seed & Brown, 1977).

Cockles are gonochorics (sexes are distinct). On medium latitude, many phases of laying can be identified during the year:

- Early layings (february-march), particularly for old individuals (Guillou *et al.*, 1990)
- Spring layings (april-june), generally the most important
- Summer layings, all the more important if the spring layings have been low
- Late autumn layings (end of September-November) not always intense

On more nordic latitude (higher than 55°N), only one reproduction period is observed. It's a short period, synchronised with the most favorable nutritive and thermic conditions. In the South, from Northern Ireland latitude, the strategy of reproduction is modified. Gametogenesis occurs in spring-summer but the repetitive characteristics of laying become more constant (Seed & Brown, 1978). For medium latitudes, up to Galice, it occurs earlier and earlier and layings are repetitive.

The intensity of laying is generally conversely linked with the intensity of the previous laying. Thus, the intensity of autumn laying is conversely linked with the intensity of the summer laying, as it has been observed in the bay of Somme (Desprez *et al.*, 1987). Literature is unanimous to say that a harsh winter stimulate reproduction, synchronising male and female emissions of gametes and insuring a better fertility (Hancock, 1973).

Ovocyte production depends on the size of individuals. For a female of about 18 to 38 mm, ovocyte production varies from 5600 to 52 000 ova (Kristensen, 1957). Gametes are emitted in the pallial cavity. Thanks to water currents created by gills, gametes will go into the sea water through the exhalant syphon. Sperm will then fecund ova and form eggs (50 to 60 µm). Eggs will develop to form a planctonic larva, named trocophore and Velliger (fig. 10). In 3 days, planctonic larvae will develop a minuscule shell and reach the size of 270 µm in 3 to 5 weeks (Creek, 1960). In three month, the larva measure 1mm.

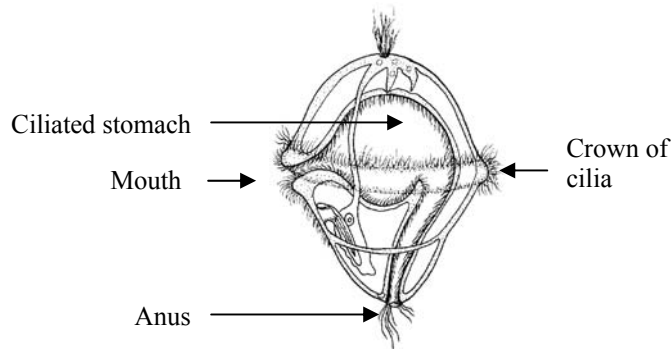


Fig. 10 schema of the trocophore larva (Biodidac, Ottawa University)

6 - Settlement

Settlement refers to the the settling of larvae in the sediment. Young larvae of 1 mm with small shells settle on the surface of the sediment and try to burrow using their foot. It occurs in May-June for most of cockles from medium latitudes, and to a lesser extent, up to September.

Bouma has shown that important densities of cockle settlement are correlated with areas where the silt is maximal during the tidal cycle, at the bathymetric and granulometric levels (Bouma *et al.*, 2001).

Sediment must have propitious granulometric characteristics for water fixing: between 50 and 200 µm in the Bay of Somme (Lemoigne *et al.*, 1988), between 100 and 125 µm in the bay of Saint-Brieuc, because the survival of youngs depends on a good water retention (humidity between 30 and 35% for settlement sites in the bay of Saint-Brieuc). Settlement areas are generally restricted. For example, they represent about 1000 ha in the bay of Saint-Brieuc. The global stock represents 3000 ha, and areas with a density of young cockles in

excess of 100 individuals/m² only represent 400 ha (excluding exceptional year with high settlement) (Ponsero *et al.*, 2009).

Temperature seems to be a primary factor for the survival of the planctonic larvae (Baggerman, 1953), particularly during the implantation in the sediment. If conditions are not combined, the young cockle can look for a better site. To find a new site, the young cockle makes some byssus, like proteic filaments, which makes its bearing surface increase to get hanging in water easier, and is transported by current to new sites. This displacement is named “bisso-pelagic migration” (Moutaudouin, 1997; Huxham & Richards, 2003).

An important or a very important settlement is generally followed by a low one the year after. For example, in the bay of Saint-Brieuc in 2005, the settlement was lower than 20% of the average observed between 2001 and 2008, after a very important settlement, rate of 220%, which occurred in 2004 (Ponsero *et al.*, 2009).

Year	total	0	%
2001	1546	1156	74,81
2002	1355	393	29,00
2003	1619	1279	79,02
2004	5158	3972	77,00
2005	2051	380	18,53
2006	1870	968	51,76
2007	858	115	13,41
2008	6297	6067	96,34
mean	2594	1791	55
sd	1990	2109	31

Table 1: Total numbers (*10⁶) of the cockles stock of the bay of Saint-Brieuc, and numbers (*10⁶) of the first year cohort assessed by modelisation (kriging)

7 - Growth

Cerastoderma edule follow a very fast growth the first two years which then declines (fig. 11). Cockles growth modeling can be adjusted to the Von Bertalanfy model (1938). It's generally used to compare mollusc growth rate (Ramon, 2003).

The model of growth in length, at t time, has for equation: $L_t = L_\infty(1 - e^{-k(t-t_0)})$ with

L_∞ : asymptote of the curve (often called “maximal length”)

k : initial growth coefficient

t_0 : theoretical date of birth

Sites	k	L_∞	t_0	ϕ^*	source
Denmark (Langerak)	0.248	54	-0.2	2.86	(Brock 1980)
	0.386	40.7	-0.34	2.81	
Germany (Wadden sea)	0.404	40	-	2.81	(Ramon 2003)
England Wales (Llanrhidian sand)	0.59	31.5	-	2.77	(Hancock 1965),
Ireland (Dundalk bay)	0.4364	49.1	-0.03995	3.02	(Fahy et al. 2005)
France (Saint-Brieuc bay)	0.64	34.36	-	2.88	
France (Marenne-Oleron)	0.068	30.87	-2.11	1.82	(Sauriau 1992)
north Spain (rias Altas)	1.609	26.5	0.104	3.05	(Catoria et al. 1984)
north Spain (rias Arosa)	0.951	41.226	0.083	3.21	(Pérez Camacho & Román 1984)
north Spain (Mundaca estuary)	0.026	28.27	8.998	1.32	(Iglesias & Navarro 1990)
south Spain (Algeciras bay)	0.18	36	-0.05	2.37	(Guevara & Niell 1989)

Table 2: Comparison of cockle growth modelisation in different european sites (K: initial growth coefficient, L_∞ asymptote value, t_0 length to the origin. Some authors do not model this value and prefer the set to 0.

* growth index : $\phi^* = 2 \log_{10}(L_\infty) + \log_{10}(k)$ according to Pauly & Morgan, 1987)

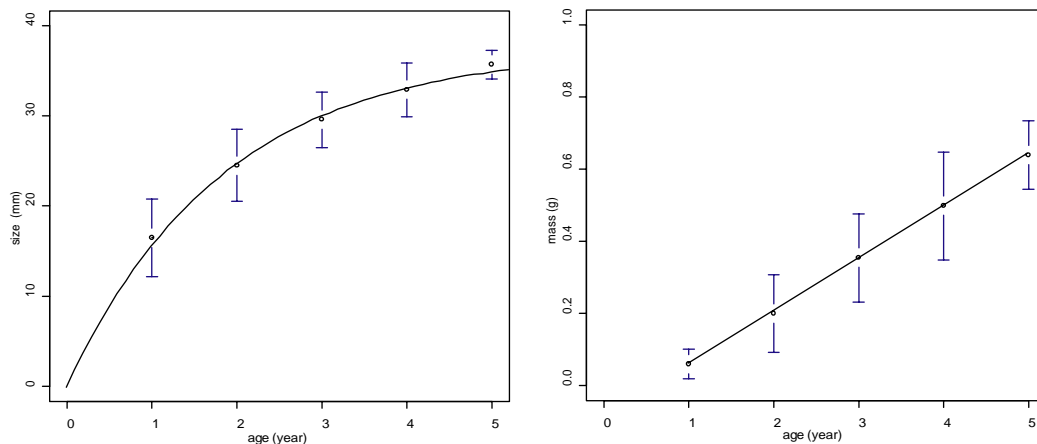


Fig. 11 : Growth of cockles in the bay of Saint-Brieuc:
 On left: link between size and age according to the Von-Bertalanfy model ($L_{\infty}=34.36$, $k=0,64$, $t_0=0$); on
 right linear relationship between mass (dry mass) and age ($Mass=0,13*age-0,06$; $R^2=0,9892$)

Many factors influence the growth of cockles : the season, the location (Hancock, 1967; Ducrotoy *et al.*, 1991), water temperature (Smaal *et al.*, 1997), food availability or cockle density (Jensen, 1993, Montaudoin & Bachelet, 1996).

In the bay of Arcachon Montaudoin & Bachelet (1996) have shown that the cockle growth was linked with their position on the intertidal area. On low foreshore levels, cockles grow faster because they suffer less tides and can spend more time filtering and feeding. Thus, growth rate depends as well on immersion time. In the bay of Saint-Brieuc, we show that the doubling of immersion time explains about 30% of the increase of growth for the first winter rings, 20% for the second winter rings, and 10% for the third winter ones. That can be brought to the fore with the comparison of the k parameter values (growth coefficient) of the Von Bertalanfy model estimated in stations characterised by different hypsometric levels.

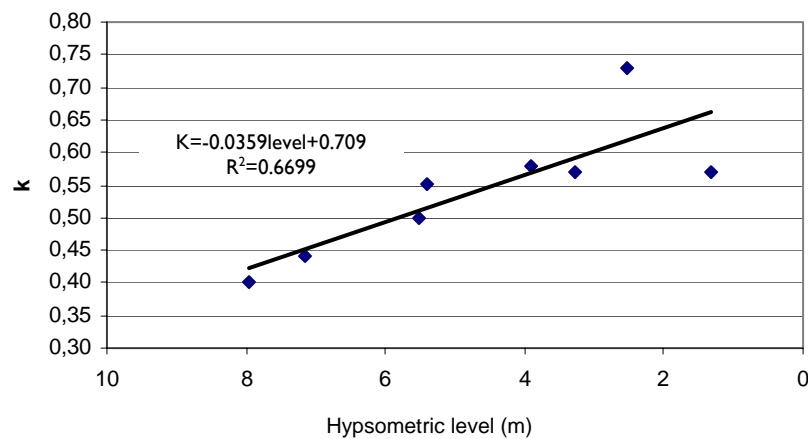


Fig. 12 : K parameter value of the Von-Bertalanfy model in the bay of Saint-Brieuc modelised according to hypsometric level (m) (Ponsero *et al.*, 2009).

Seasonal growth starts in May in Wales, it reaches its maximum from June to August, and it's negligible after (Seed & Brown, 1977; Hancock & Franklin, 1972). Cockles generally lose weight during winter and support the theory of important mortality due to winter harshness.

In regions characterised by marked cycles of temperature, seasonal rhythms of growth are visible in mineralised tissues.

The fluctuation of growth speed causes an alternation of fast growth zones and slow growth on shells. Sometimes, the growth can stop, waiting for better conditions. This seasonal growth causes rings of growth on shells (fig. 13). Thus, it became possible to determine the age of the cockle reading and counting these rings, and analyse the differential growth of populations in a second time (Richardson *et al.*, 1980; Jones & Baxter, 1987). However, rings reading remains difficult because of additional rings caused by growth variations during the same year (Ramon, 2003), all the more when winter temperatures remain high (low latitudes).

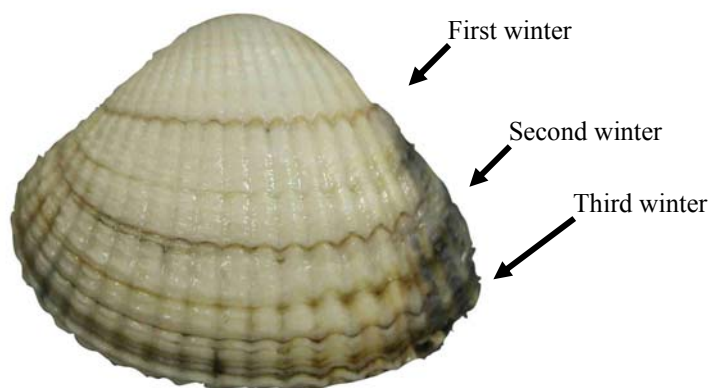


Fig. 13: Growth rings (cockle size: 4,2 cm)

Relationships which link individual size (mm) with the mass of living matter produced (mass of ash free dry mass) can be analysed in this form: $W=aL^b$.

W: ash free dry mass ($g.m^{-2}$)

L: size of individuals (mm)

a and b: parameters of the equation established for the site

Sites	a	b	source
Baie de Somme (France)	$3*10^{-6}$	3.0969	(Triplet <i>et al.</i> 1999)
Baie de Saint-Brieuc (France)	$4*10^{-6}$	3.3504	Ponsero and al 2009
Saint-Jacut (France)	$4*10^{-6}$	3.3381	Vivarmor Nature, 2008
Pays de Galles	$3.2*10^{-6}$	3.083	(Sutherland 1982)

Table 3: Comparison of the modeling parameters of the size-mass relationship in different sites.

8 – Biomass and production

Cockles can represent up to 60% of the benthos biomass (Ramon, 2003) and play an important role in the intertidal ecosystem functioning (Beukema and Dekker, 2006). In the bay of Saint-Brieuc, cockles represent 62% of the bivalves biomass (2007).

The produced biomass (grams of dry matter per square meter ou $g.AFDW. m^{-2}$) is about from 10 to 40g, and can reach up to 100 $g.AFDW. m^{-2}$). In the bay of Marennes-Oléron, biomass is evaluated to 32,5 $g.AFDW. m^{-2}$ (Sauriau, 1992). In the Wadden sea, the production varies from 7,6 to 101,6 $g.AFDW. m^{-2}$ (Beukema & Dekker, 2006). In the bay of Saint-Brieuc the biomass average of the site, varies in function of year between 6,01 $g.AFDW. m^{-2}$ and 14,52 $g.AFDW. m^{-2}$ (average 10,349 \pm 2,713), with maximums that vary from 43 to 388,55 $g.AFDW. m^{-2}$. To sum up, production depends on many factors and strong year-to-year variations are usually observed.

9 – Structure of the population

Class size histograms are generally polymodal (fig. 14) with an overlapping of different cohorts for the highest age classes (Ramon, 2003; Ponsero *et al.*, 2009). To differentiate the membership probability of cockles of one cohort or other, the probability of each cockle being linked with a cohort can be calculated using its size and consulting the normal curve of different cohorts obtained with the analysis of growth rings (Ponsero *et al.*, 2009). Parameters of cohort composing the demographic structure established each year are optimized by the maximum of likely methods (Hasselblad, 1966).

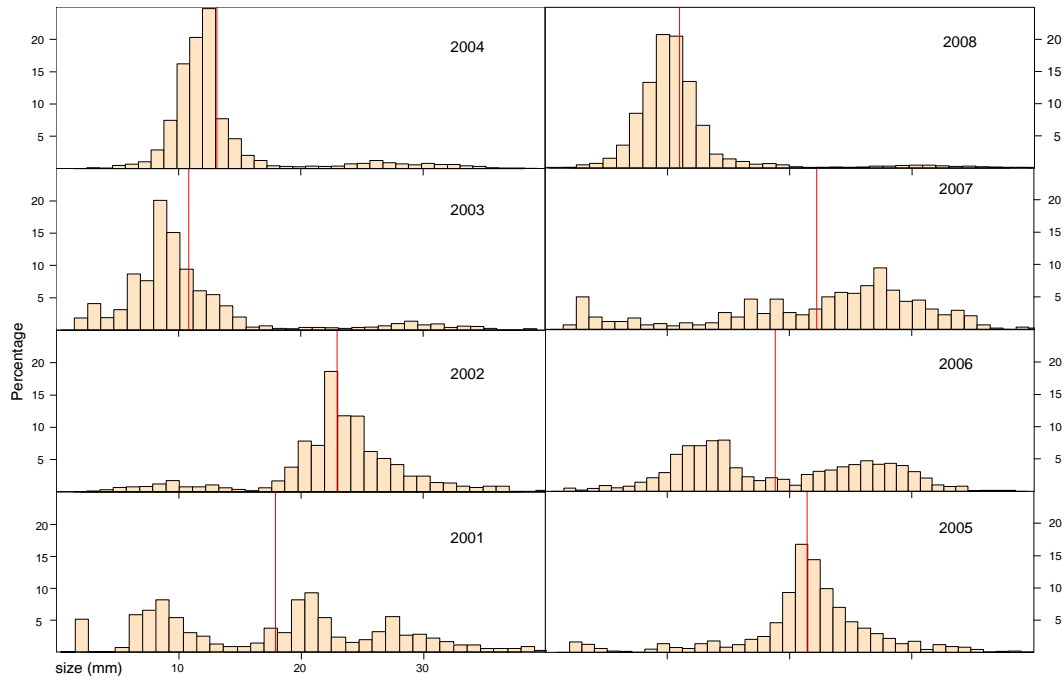


Fig. 14 : Size-frequency bar charts observed in the bay of Saint-Brieuc from 2001 to 2008, expressed as a percentage of total

For example, an important settlement can be observed in 2003, 2004 and 2008; an old population in 2002 and 2005; and different cohorts well represented in 2001. It shows strong year-to-year variations of the population structure which depend on the settlement of the year and the years before.

One of the cockle particularity is certainly the flexibility of its demographic strategy (Seed & Brown, 1978; Sauriau, 1992). That's why biologic parameter assessment of a population must be realised with a sampling protocol adapted to the spatial scattering and the year-to-year variations.

10 – Spatial distribution

A spacial segregation of generations can be observed, as this has been highlighted in many sites for *Macoma balthica* (Bachelet, 1979; Hiddink & Wolf, 2002) and *C. Edule* (Sutherland, 1982). Spacial distribution varies with the size of individuals. Higher class sizes are at lower bathymetric levels. A correlation exists between the medium size of cockles per station and the bathymetric level of stations.

Generally, cockle stocks are characterized by a strong spacial heterogeneity of densities and biomasses (Farrow, 1974). Unlike what is observed in the bay of Somme (Desprez *et al.*, 1989) or in Scotland (Farrow, 1974), this spacial structuring is quite constant in the bay of Saint-Brieuc under eight years of monitoring. Settlement areas are geographically well defined and localized at mid-tide level in limited areas (excepted during exceptional settling phases). Cohorts 4+ and 5+ are below this level (fig. 15).

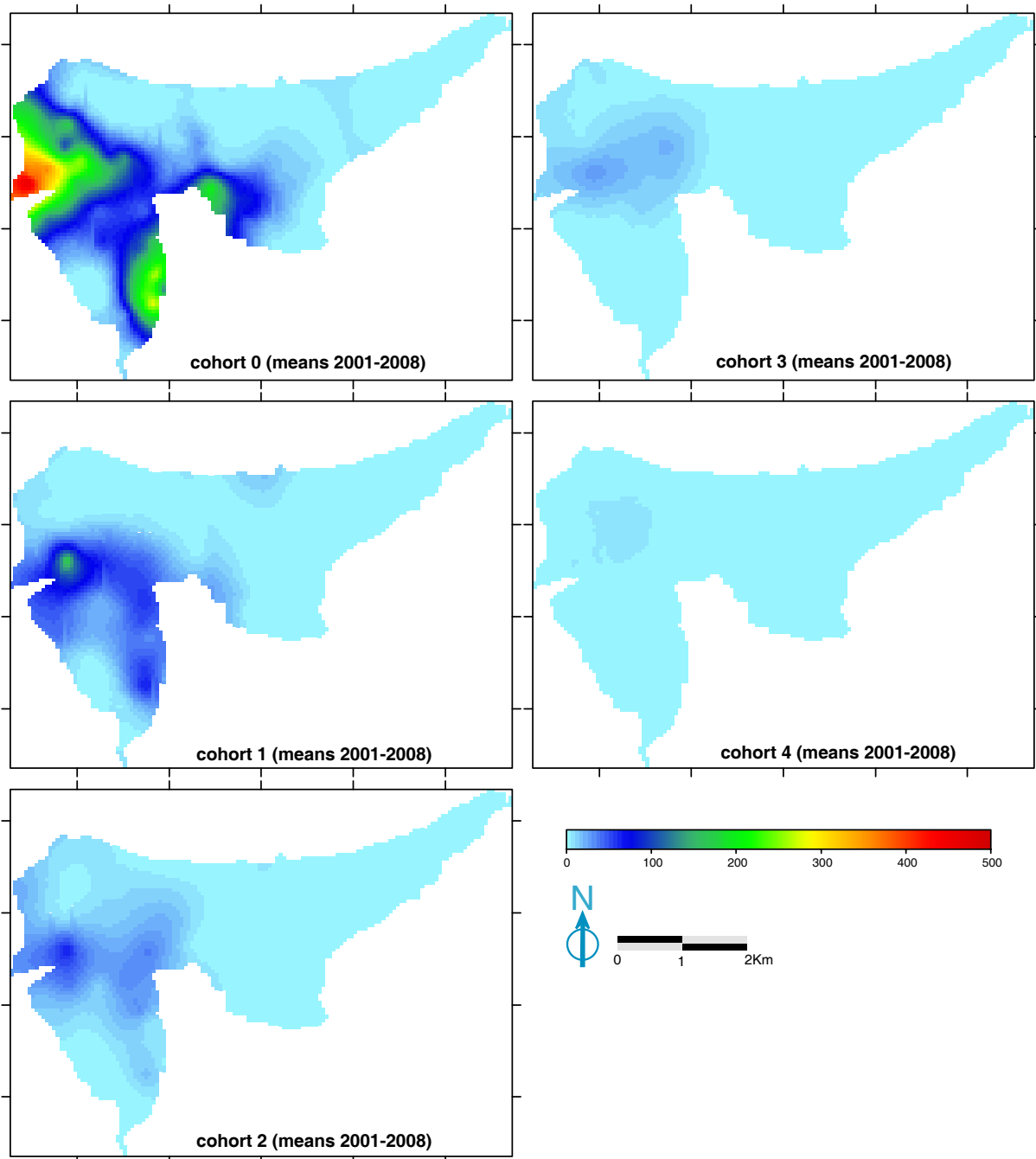


Fig. 15 : Spatial distribution map of the different cohorts in the bay of Saint-Brieuc (average values modeled from 2001 to 2008 by Kriging)

11 – Population dynamic

Cockle numbers can vary year-to-year on some sites or keep constant during larger periods on others. Different factors are described as acting on settlement, growth and natural population mortality. The diagram below, extracted from the thesis of Montaudouin (1995), shows the synthetic (fig. 16).

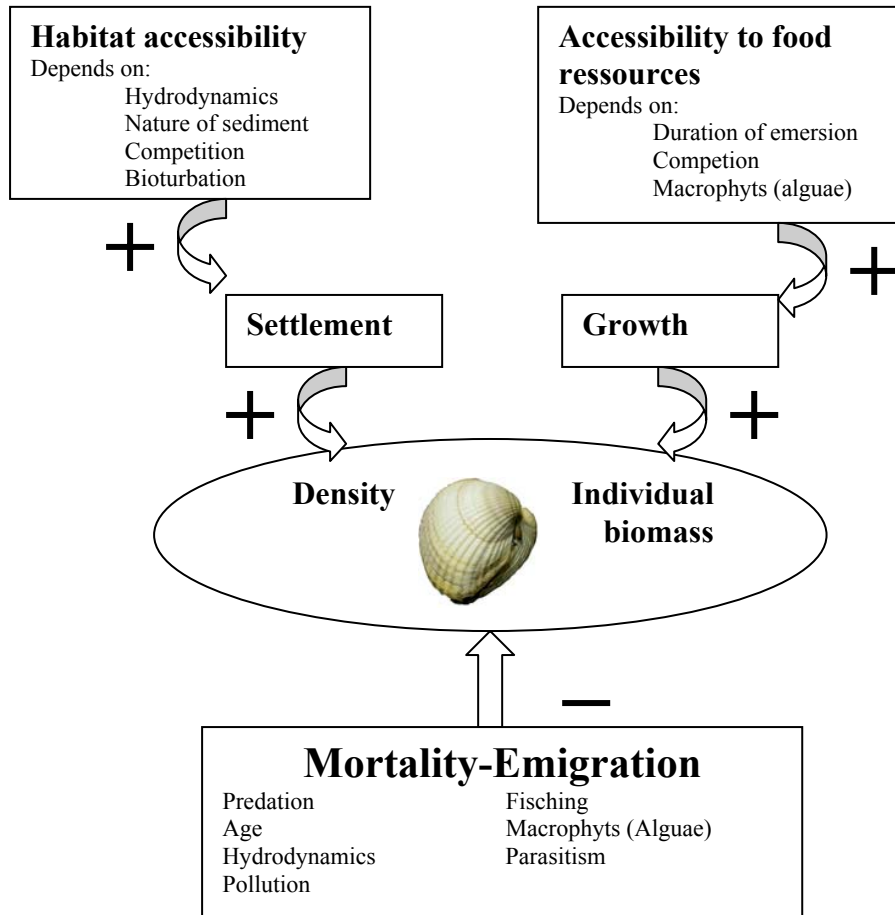


Fig. 16: Factors regulating the population dynamics of cockles (Montaudouin, 1995).

12 – Mortality

The long-term monitoring of the population dynamics of the cockles in the bay of Saint-Brieuc shows that the medium mortality from one year to another is an overall constant during the cockle life: between 50% and 70% of the number of the previous year before (Ponsero *et al.*, 2009).

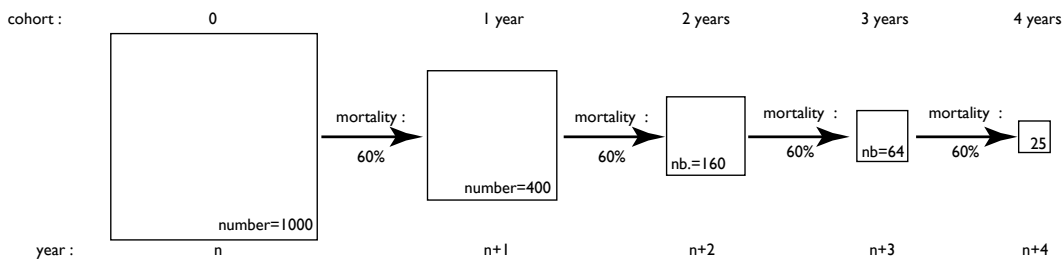


Fig. 17: Diagram shows the variations of an hypothetical cohort over time (with a constant medium interannual mortality of 60%).

In this case, the mortality is considered complete because it includes all of the anthropic or natural causes. Many authors have been interested in the predation that occurred on juveniles. Reise (1985) shows clearly that the pressure of predation is focused on first stages of growth and then decreases with cockle growth. For example, predation by the European flounder (*Platichthys flesus*) on the cockle seed (Wolf *et al.*, 1981), and the shore crab (*Carcinus maenas*) (Brock, 1980; Sanchez-Salazar *et al.*, 1987a,b) have been highlighted. Predation by waders, particularly by European oystercatcher (*Haematopus ostalegus*) occurs on individuals of about 2 cm long, either on one year and half old cockles (Triplet, 1996; Triplet *et al.*, 1999a) or between 15 and 30mm according to West *et al.* (2007). Leftover cockles were found in the faeces of waders, as Dunlin *Calidris alpina* (Durell & Kelly, 1990; Le Drean Quenec'hdu & Maheo, 1997; Cabral *et al.*, 1999), Red knots *Calidris canutus* (Dekinga & Piersma, 1993), Bar-tailed Godwit *Limosa lapponica* (Goss-Custard *et al.*, 1977; Scheiffart, 2001), Eurasian curlew *Numenius arquata* (Le Drean Quenec'hdu & Maheo, 1997), Avocet *Recurvirostra recurvirostra* (Moreira, 1995).

Extreme temperatures play an important role in the mortality of different age classes. The winter mortality particularly affects the smallest individuals (Sauriau, 1992). Populations can be affected when the temperature of the sediment decreases below 7°C. Kristensen (1957) showed that the tolerance of cockle is about 34°C with a lethal step at 36°C, and that seed resists better to high temperature than adults.

It's difficult to assess the impact of professional or recreational harvesting. However, these activities can have a significant impact on population dynamics (next chapter). The impact of parasitism is rarely mentioned in studies focused on the population dynamics of bivalves. Chapter 14 highlights the importance of this phenomenon without assessing the impact. Note that an accidental or diffuse pollution can weaken individuals which will become less resistant, and more sensitive to attacks by parasites or predators. Thus, the impact of these interacting factors is more important than the sum of the two.

13 – Harvesting and management of the bed

In all European sites studied where an important harvesting activity occurs, a demographic structure truncated beyond the commercial size is observed, whatever the growth rate of individuals of these populations (Hancock, 1965; Franklin 1972; Gordo, 1982). Sauriau (1992) mentions that the demographic structure of a stock under heavy harvesting pressure presents less than 5% of individuals measuring 30mm.

In France up to 2006, the harvesting impact (professional or recreational) occurs on class sizes greater than or equal to 30mm, corresponding to 3 years old individuals and over. One can hypothesize that the increase of mortality of this class age could be attributed to harvesting. In autumn 2006, the legal harvesting size has changed from 30mm to 27mm (corresponding to two and a half years old individuals). It is possible that this decision had an impact on the demographic structure of the population. In the future, this modification of the harvesting size will probably influence the 1∞ modelised value, as it has been highlighted by Hancock in 1967, and that, whatever the growth rate of individuals of population. This harvesting size decrease, that seems negligible, causes a doubling of harvestable stock (Ponsero *et al.*, 2009).

14 - Cockles parasitism

Cockles are, as other animals, a living environment for other organisms which depend totally on the first. This phenomenon is called parasitism. The parasite lives in its host, in this case the cockle, and reduces more or less the fitness of the host. Many parasites are known for the cockle. Can find ciliated protozoa living in the water-intake valves, crustaceans in the intestine, and several flatworms attached to the plathelminth phylum (digenian trematodes) in different bodies. These flatworms follow very complex biologic cycles.

A - Digenian trematode parasites

The adult of the parasite lives in vertebrates (bird or fish which is named definitive host (DH)) and lays eggs that will join the water by the faeces of the vertebrate. A small larva (miracidium) is born from this egg and immediately looks for a second host (intermediate host 1, IH1) to multiply, usually a mollusc. Cockle can be this PH1. A large numbers of larvae is produced by asexual reproduction, and then runs into water. A third host (intermediate host 2, IH2) is used by larvae to join the definitive host easily. By feeding PH2, the DH swallows the parasite at the same time, and becomes contaminated. At this moment, the larval form of the parasite is different because it aims to wait and does not try to multiply as in PH1. Thus, the parasite lives in three different hosts (Fig. 18).

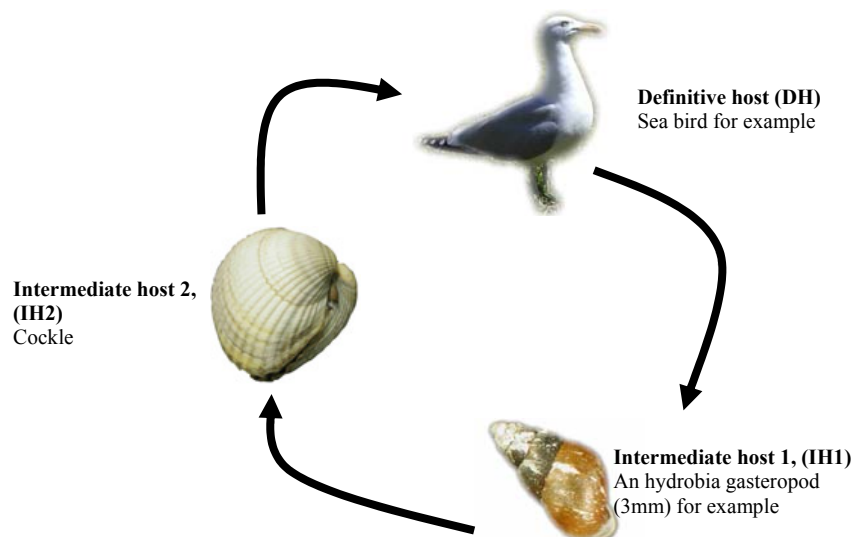


Fig. 18: Example of three successive hosts which enable to close the biological cycle of a digenian trematode parasite

According to a recent synthesis (Montaudoin *et al.*, 2009), 16 digenian species use cockle as intermediate host on all the East-Atlantic facade. Four examples of these parasites found in the bay of Saint-Brieuc are presented here (Fig. 19 to 22).

Gymnophallus choledocus

IP1: Cockle

IP2: ringed worms (annelid polychaete, for example *Nereis*)

DH.: seabird

Low prevalence in cockle. Intensive asexual reproduction that makes the cockle die. Cercariae, second type of mobile larva, left the dying cockle to join the IH2.

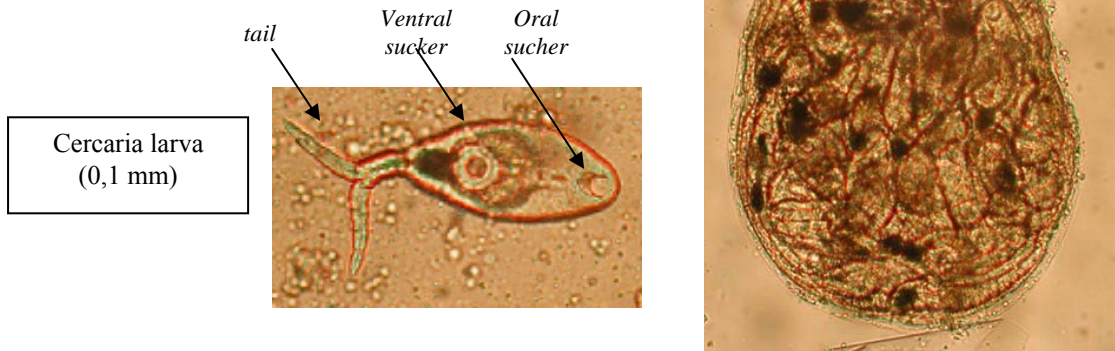


Fig. 19 : *Gymnophallus choledocus* sporocyst larva and cercaria

Labratrema minimus (*Bucephalus minimus*)

IH1: Cockle

IH2: fish, Gobby (*Pomatoschistus* sp.)

DH: fish, European sea bass (*Dicentrarchus labrax*)

Generally low prevalence in cockle, but can reach 50% at Arcachon. In the bay of Saint-Brieuc, prevalence varies from 2 to 20% depending on sites (Montaudouin *et al.*, 2009). Intensive multiplication in hemolymph (blood), gonad or digestive gland of the cockles which dies. Note on the right picture, high concentrations of parasites for only one cockle. Cercariae leave cockle and look actively for a gobby (PH2) to penetrate it by the base of fins or gills (Malek, 2001). These larvae, then, are stored in the fish's liver. When an infested gobby is consumed by a Sea bass, it is infested in turn and the parasite takes its adult form.

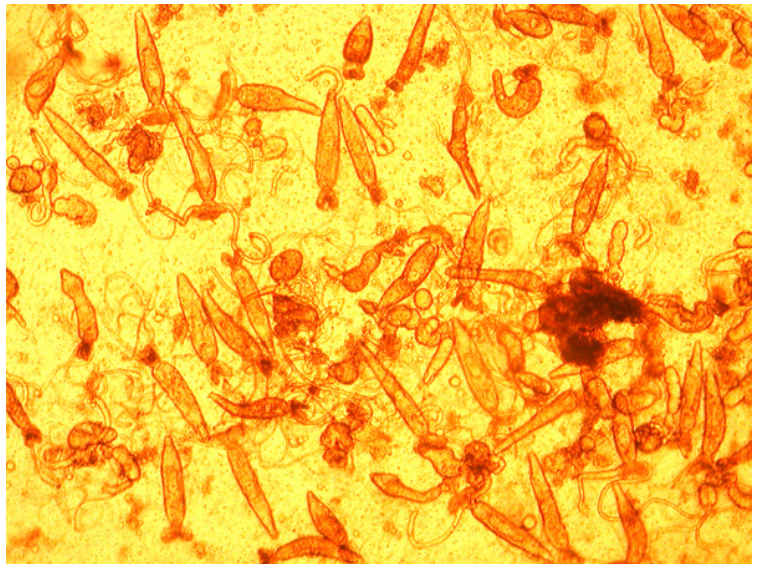


Fig. 20: *Labratrema minimus* larvae of 0,2mm with 2 long tentacles used to adhere to gobby mucus.

Himasthla ssp

IP1: Hydrobia, a gasteropod (*Hydrobia ulvae*)
 IP2: Cockle
 DH: a sea bird (gull or European oystercatcher)

High prevalence from 84% to 100% at Arcachon ((Montaudouin et al. 2000); (Montaudouin et al. 2009)) and 100% in the bay of Saint-Brieuc (Montaudouin and al., 2009).

In foot cockle, the parasite makes a cyst (metacercarian stage) to wait, several months if it's necessary, that the cockle is eaten by an European oystercatcher. These cysts do not seem adverse for cockles. Indeed, the parasite's interest is for the cockle to live a long time. It will increase the probability of the parasite being eaten by the DH

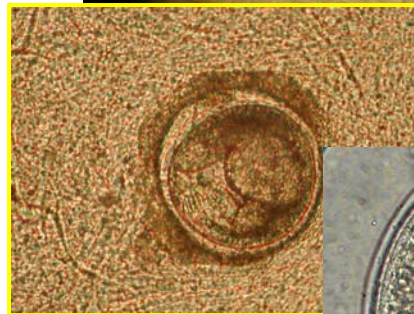
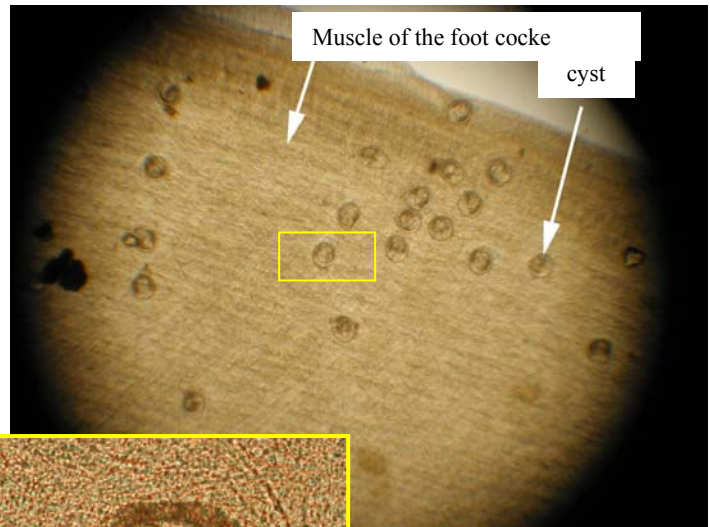


Fig. 21 : Cysts of *Himasthla* (200µm). Note the crown of thorns on the head on the bottom picture.

Monorchis parvus

IP1: Cockle
 IP2: several bivalves
 DH : a marine fish

Low prevalence
 Strong multiplication in the form of sporocysts in the cockle. Cercariae, second type of larvae, will leave the cockle to join IH2.

Sporocyst larva (0,5mm) with 4 germinal balls



cercaria (0,1 mm) in sporocyst



Fig. 22 : *Monorchis parvus*, sporocyst larva and cercaria

B - Other parasites found

– Turbellarians (free flatworms(not in a parasite stage))

Paravortex cardii

This small 2mm long flatworm, highly mobile thanks to cilia spread all over the animal. It lives in the intestine of different bivalves including cockle. It's very frequent but rarely in high numbers, and seems harmless.

Fig. 23: *Paravortex cardii* (2 mm)



- Crustacean

A small elongated crustacean (2mm long) can be found, again in the intestine: *Mytilicola intestinalis*. As its name indicates, it particularly likes the intestine of mussels (“cola”: which likes; “mytili”: mussel; “intestinalis”: intestine). It's also possible to find a closely related species (*Mytilicola orientalis*) in large numbers in farms of Pacific cupped oyster (*Crassostrea gigas*). It lives in an environment rich in food (phytoplankton, organic matter), so it just takes what it needs. In farms, this parasitism can cause a decrease of the growth rate of parasited individuals.

It is regularly found in low numbers in the intestine of cockle. It does not seem to cause damages on cockle populations.



Fig. 24 : *Mytilicola intestinalis* (3 mm) Mytilicolidae crustacean copepode.

- Ciliated protozoan

Ciliated protozoans are animals made of only one cell, therefore very small and invisible to the naked eye. The cilia that characterize the phylum of ciliates can be easily observed under the microscope.

Trichodina sp. particularly likes the company of cockles. It lives in water-intake valves near gills and may cling to them. *Trichodina* sp. is found in all the cockles of the bay of Saint-Brieuc, sometimes in large numbers. This species is little known. It seems that it is harmful to weakened young cockles, by drawing the hemolymph of gills, and promotes secondary bacterial infections (Lauchner, 1983).



Fig. 25 : *Trichodina* sp (50 μ m)
Long cilia around the animal can be observed.

C - To conclude

Others macroparasites have been found in the cockles of the bay of Saint-Brieuc, for example: *Meiogymnoplallus minutus*. This species is located at the hinge in a vesicule tissue of the host. It is present in large quantities and with a high prevalence. The first intermediate host is the Peppery furrow shell (*Scrobicularia plana*), very common in the bay of Saint-Brieuc. The definitive host can be the European oystercatcher or some anatidae.

The impact of parasitism generally depends on the numbers of parasites present in the host. In scientific literature, several cases of weakening effects are mentioned. Strong mortality can occur (Jonsson & André, 1992), and sometimes a destruction of gonads which causes the castration of some individuals, and thus decreases the stock of breeding (Boyden, 1972).

When cockle is the first intermediate host, there is an outbreak that causes the death of the host, but with a relatively low prevalence. IH1 is used to multiplicat asexually intensively the parasite and provide a very large number of infective forms that will stay in the second intermediate host.

When cockle is the second intermediate host, it serves to convey parasites and send them to the definitive host. In this case, the virulence of the parasite is low because it must not cause the death of the host, which will cause its own at the same time. There is a low pathogenecity, but a high prevalence, which will increase the probability that the definitive host becomes infested by eating IH2.

We observed in the bay of Saint-Brieuc that the cockles found on the surface of the sediment (ascending cockles) were more infested by cysts of *Himasthala* (Fig. 26). That indicates a nefast effect of the parasite on the weakened animal. Some authors interpret this as a strategy of the parasite. Indeed, it is not by chance if the parasite is in the foot of the cockle. We can suppose that it causes a decrease of its burrowing capacities. It thus becomes more accessible to the bird (definitive host). This phenomenon is called "favorisation" mechanism (Combes, 1995).

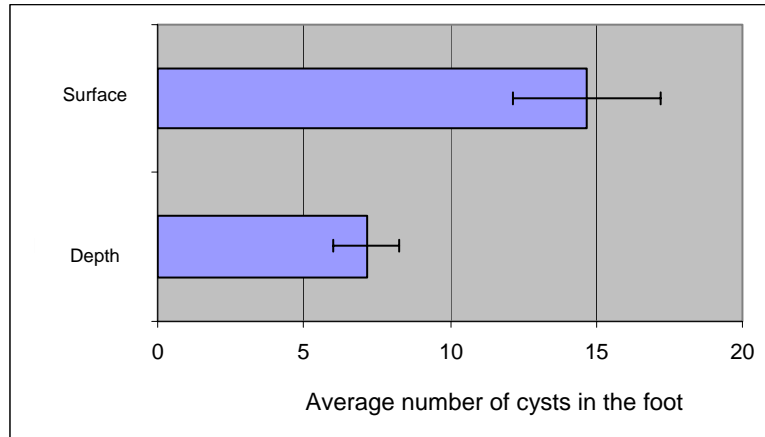


Fig. 26: Average number of cysts in the foot \pm standard error (cockle found on the sediment n=35, found in the sediment (n=40), size: around 3cm. U.C.O, June 2003, not published)

Parasitism is not the only factor that can explain the rise of cockles on the sediment surface. The lack of oxygen is the most implicated factor.

We note a lower resistance to thermal stress (heatwave for example) when cockles are infested by *Himasthla spp.* (Lauckner, 1983). Indeed they die more quickly than uninfested ones.

Parasites represent a serious cause of direct mortality (especially the first year), and thus a factor of regulation of populations. It seems as well to make them more sensitive to environmental disturbances (climate, pollution...) or decrease the growth rate (Lauckner, 1983; Jonsson & André, 1992; Wegeberg & Jensen, 2003; Thielges, 2006). Thus, the impact of pollutions could be amplified by an important parasitism.

A second question facing us: Can the parasitic infestation and the induced mortality be considered as a consequence of a weakening of animals caused by ecosystem dysfunctions (pollutions, or disturbance of balances)? Weakened cockles, with immunity deficiency, will be more easily attacked by parasites. Further studies are necessary to attempt to provide some answers to these questions.

Finally, no studies have shown that these parasites could be transmitted to humans and cause disease. Even in the absence of cooking, they are destroyed by the acidity of the stomach and by digestive enzymes.

Credits photos :

Université U.C.O. Bretagne Nord – Laurent DABOUINEAU
Réserve Naturelle Nationale baie de Saint-Brieuc – Alain PONSERO

Reference of this article :

Dabouineau, L. & Ponséro, A., 2009. **Synthesis on biology of Common European Cockle *Cerastoderma edule***. Second edition Université Catholique de l'Ouest - Réserve Naturelle Nationale Baie de St-Brieuc, 23 pages.

e-mail :

laurent.dabouineau@uco.fr

alain.ponsero@espaces-naturels.fr

Bibliography

- Bachelet G., 1979. *Dynamique de la macrofaune benthique et production des lamellibranches de l'estuaire de la Gironde*. Univ. Pierre et Marie Curie, Paris VI, 163p+annexes.
- Baggerman B., 1953. Spatfall and transport of *Cardium edule* L. *Archs. néerl.Zool.* 10(3), 315-342.
- Bertalanffy L. von, 1938. A quantitative theory of organic growth (inquiries on growth laws II). *Hum Biol.* 10, 181-213.
- Beukema J. J. & Dekker R. , 2006. Annual cockle *Cerastoderma edule* production in the Wadden Sea usually fails to sustain both wintering birds and a commercial fishery *Marine ecology. Progress series.* 309, 189-204.
- Bouma H., Duiker J.M.C., De Vries P.P., Herman P.M.J. & Wolff W.J., 2001. Spatial pattern of early recruitment of *Macoma balthica* (L.) and *Cerastoderma edule* (L.) in relation to sediment dynamics on a highly dynamic intertidal sandflat *Journal of Sea Research.* 45(2), 79-93.
- Boyden C.R., 1972. Relationship of size to age in the cockles *Cerastoderma edule* and *C. glaucum* from the river Crouch Estuary, Essex. *Journal of Conchology.* 27, 475-489.
- Brock V., 1980a. Evidence for niche differences in sympatric populations of *Cerastoderma edule* and *C. lamarki*. *Mar. Ecol. Prog. Ser.* 2, 75-80.
- Brock V., 1980b. Notes on relations between density, setting and growth of two sympatric cockles *Cardium edule* and *C. glaucum*. *Orphelia.* 1, 241-248.
- Cabral J.A., Pardal M.A., Lopes R.J., Murias T. & Marques J.C. , 1999. The impact of macroalgal blooms on the use of the intertidal area and feeding behaviour of waders (Charadrii) in the Montego estuary (west Portugal). *Acta Oecologica.* 20, 417-427.
- Catoria J. L., Martinez D. & De Coo A., 1984, Contribución al estudio del crecimiento del berberecho (*Cerastoderma edule* L.) en las Rías Altas gallegas. *Actas do IV Simposio Ibérico de estudos do benthos marinho*, 2, 295-306.
- Combes C., 1995. *Interactions durables. Ecologie et évolution du parasitisme*. Masson, 524 p.
- Coosen J., Twisk F., Van Der Tol M.W.M., Lambeck R.H.D., Van Stralen M.R. & Meire P.M. , 1994. Variability in stock assessment of cockles (*Cerastoderma edule* L.) in the oosterschelde (in 1980-1990), in relation to environmental factors *Hydrobiologia.* 282/83, 381:395.
- Dekinga A. & Piersma T., 1993. Reconstructing diet composition on the basis of faeces in a mollusc-eating wader, the Knot *Calidris canutus*. *Bird Study.* 40, 144-156.
- Desprez M., Ducrotoy C.R. & Rybarczyk H., 1989. *Fonctionnement biologique des gisements de coques de la baie de Sommes (France) à la suite du recrutement massif de 1987 : recrutement de 1988 et 1989, environnement bio-sédimentaire*. Picardie R. GEMEL, 42p+annexes.
- Desprez M., Ducrotoy J. P. & Elkaim B., 1987. Crise de la production des coques (*Cerastoderma edule*) en baie de Somme. I. Synthèse des connaissances biologiques. *Revue des Travaux de l'Institut des Pêches maritimes.* 49, 215-230.
- Downing J.A., 1979. Aggregation, transformation and the design of benthos sampling programs. *J. Fish. Res. Board Can.* 36, 1454-1463.
- Ducrotoy C.R., Rybarczyk H., Souprayan J., Bachelet G., Beukema J. J., Desprez M., Dörjes J., Essink K., Guillou J., Michaelis H., Sylvand B., Wilson J.G., Elkaïm B. & banez F., 1991, A comparison of the population dynamics of the cockle (*Cerastoderma edule*) in North-Western Europe. ECSA 19. *Proceedings of the Estuarine and Coastal Sciences Association Symposium*. University of Caen, France. Estuaries and Coasts: Spatial and Temporal Intercomparisons, 173-184.
- Durell S.E.A. & Kelly C.P. , 1990. Diets of Dunlin *Calidris alpina* and Grey plover *Pluvialis squatarola* on the Wash as determined by dropping analysis. *Bird Study.* 37, 44-47.
- Elliott J.M., 1979. Some methods of the statistical analysis of samples benthic invertebrates. *Freshwater biol.Assoc.Sci.Publ.* 25, 157p.
- Fahy E., Carroll J. & Murrin S., 2005. *The Dundalk Cockle Cerastoderma Edule Fishery in 2003-2004*. The Marine Institute.

- Farrow G.E., 1974. On the ecology and sedimentation of the Cardium shellsands and transgressive shellblanks of traigh Mhor, Island of Barra, Outer Hebrides. *Trans. Royal Soc. Edinburgh*. 69, 203-230.
- Franklin A., 1972. *The cockles and its fisheries*. Ministry of Agriculture Fisheries and Food F. L., Burnham on Crough, Essex, 34p.
- Gordo L.S., 1982. Aspects of the growth and density of *Cerastoderma edule* in the Alvor Salt Marsh South Portugal. *Arq. Mus. Boc.* 1(19), 435-452.
- Goss-Custard D., Jenyon R.A., Jones R.E., Newberry P.E. & Williams R.I.B., 1977. The ecology of the Wash II. Seasonal variation in the feeding conditions of wading birds (Charadrii). *Journal of Applied Ecology*. 14, 707-719.
- Guevara J. M. & Niell F. X., 1989. Growth rates in a continuously immersed population of *Cerastoderma edule* L. *SCI. MAR.* 53, 483-489.
- Guillou J., Bachelet G., Desprez M., Ducrotoy J.P., Madani I., Rybarczyk H., Sauriau P.G., Sylvand B., Elkaim B. & Glemarec M., 1990. Les modalités de la reproduction de la coque (*Cerastoderma edule*) sur le littoral français de la Manche et de l'Atlantique. *Aquatic Living ressource*. 3, 29-41.
- Hancock D.A., 1965. Growth and mesh selection in the edible cockle (*Cardium edule* L.). *Journal of Applied Ecology*. 4, 137-157.
- Hancock D.A., 1967. Growth and mesh selection in the edible cockle (*Cardium edule* L.). *Journal of Applied Ecology*. 4, 137-157.
- Hancock D.A., 1973. The relationship between stock and recruitment in exploited invertebrates. *Cons. Int.Explor.Mer.* 164, 113-131.
- Hancock D.A. & Franklin A., 1972. Seasonal changes in the condition of the edible cockle *Cardium edule* (L.). *Journal of Applied Ecology*. 9, 567-579.
- Hasselblad V., 1966. Estimation of parameters for a mixture of normal distribution. *Technometrics*. 8(3), 431-444.
- Hiddink J.G. & Wolff W.J., 2002. Changes in distribution and decrease in numbers during migration of the bivalve *Macoma balthica*. *Mar. Ecol. Prog. Ser.* 233, 117-130.
- Huxham M. & Richards M., 2003. Can postlarval bivalves select sediment type during settlement? A field test with *Macoma balthica* (L.) and *Cerastoderma edule* (L.). *Journal of Experimental Marine Biology and Ecology*. 288, 279-293.
- Iglesias J. I. P. & Navarro E., 1990. Shell growth of the cockle *Cerastoderma edule* in the Mundaca estuary (north Spain). *Journal of Molluscan Studies*. 56, 229-238.
- Jensen K.T., 1993. Density dependant growth in cockles (*Cerastoderma edule*): evidence from interannual comparisons. *Journal of the Marine Biological Association of the United Kingdom*. 73(2), 333-342.
- Jones A.M. & Baxter J.M., 1987, Monitoring and surveillance of sandy shores using the bivalve *Cerastoderma edule* (L.). in: *Proceedings of the Estuarine and Brackish Water Association*, Developments in estuarine and coastal techniques, (ed. J. McManus & M. Elliot), ESBA 17 Symposium, University of Dundee, Denmark.
- Jonsson R. & André C., 1992. Mass mortality of the bivalve *Cerastoderma edule* on the Swedish west coast caused by infestation with the digenean trematode *Cercaria cerastodermae* L. *Ophelia*. 36(2), 151-157.
- Kristensen I., 1957. Differences in density and growth in a cockle population in the Dutch Wadden Sea. *Arch. Neerl. Zool.* 12, 351-453.
- Lauckner G., 1983. Diseases of Mollusca: Bivalvia. In: *Kinne O., (Ed.), Diseases of marine animals. Vol II: Introduction, Bivalvia to Scaphopoda*. Biologische Anstalt Helgoland, Hamburg, 632-761.
- Le Drean Quenec'hdu S. & Maheo R., 1997. Les limicoles séjournant dans les traicts du Croisic (Presqu'île Guérandaise, Loire-Atlantique) : Régime alimentaire et impact sur les populations de mollusques bivalves. *Alauda*. 65, 131-149.
- Lemoigne M., Desprez M. & Ducrotoy J.P., 1988. *Exploitation des ressources en bivalves de la baie de Somme. Aménagement de la pêche à pied et état de la ressource en coques*. IFERMER, 177p.

- Montaudouin X. de, 1995. *Etude expérimentale de l'impact de facteurs biotiques et abiotiques sur le recrutement, la croissance et la survie des coques Cerastoderma edule (Mollusque-Bivalve)*. Thèse Université Bordeaux I.
- Montaudouin X. de, 1997. Potential of bivalves' secondary settlement differs with species : a comparison between cockle (*Cerastoderma edule*) and clam (*Ruditapes philippinarum*) juvenile resuspension. *Marine Biology (Berlin)*. 128, 639-648.
- Montaudouin X. de & Bachelet G., 1996. Experimental evidence of complex interactions between biotic and abiotic factors in the dynamics of an intertidal population of the bivalve *Cerastoderma edule*. *Oceanologica acta*. 19(3/4), 449-464.
- Montaudouin X. de, Kisiielewski I., Bachelet G. & Desclaux C., 2000. A census of macroparasites in an intertidal bivalve community, Arcachon Bay, France. *Oceanologica Acta*. 23, 453-468.
- Montaudouin X. de, Thieltges D.W., Gam M., Krakau M., Pina S., Bazairi H., Dabouineau L., Russell-Pinto F. & Jensen K.T., 2009. Digenean trematode species in the cockle *Cerastoderma edule*: identification key and distribution along the north-eastern Atlantic shoreline. *Journal of the Marine Biological Association of the United Kingdom*. 89(3), 543-556.
- Moreira F., 1995. The winter feeding ecology of Avocets *Recurvirostra avosetta* on intertidal areas. II. Diet and feeding mechanisms. *Ibis*. 137, 99-108.
- Pauly D. & Morgan G.P., 1987, Length-based methods in fisheries research. . *ICLARM Conf. Proc.13* Manila.
- Pérez Camacho A. & Román G., 1984. Crecimiento, reproducción, mortalidad y producción del berberecho *Cerastoderma edule* (L.), en la Ría de Arousa. *Cuad. Area Cienc. Mariñ. Sem. Est. Gal.* 499-507.
- Ponsero A., Dabouineau L. & Allain J., 2009. Modelling of the Cockle (*Cerastoderma edule* L.) fishing grounds in a purpose of sustainable management of traditional harvesting. *Fisheries Science*. 75(4), 839-850.
- Quéro J.C. & Vayne J.J., 1998. *Les fruits de la mer et les plantes marines des pêches françaises*. Delachaux et Niestlé, Ifremer, 256.
- Ramon M., 2003. Population dynamics and secondary production of the cockle *Cerastoderma edule* (L.) in backbarrier tidal flat of the Wadden. *Sea. Sci.Mar.*. 67(4), 429-443.
- Reise K., 1985. *Tidal Flat Ecology: An Experimental Approach to Species Interactions*. Springer-Verlag, Berlin.
- Reys J.P., 1971. Analyses statistiques de la microdistribution des espèces benthiques de la région de Marseille. *Tethys*. 3(2), 381-403.
- Richardson C.A., Crisp D.J., Runham N.W. & Gruffydd L. D., 1980. The use of tidal growth bands in the shell of *Cerastoderma edule* to measure seasonal growth rates under cool temperate and sub-arctic conditions. *Journal of the Marine Biological Association of the United Kingdom*. 60, 977-989.
- Sanchez-Salazar M.E., Griffiths C.L. & Seed R., 1987a. The effect of size and temperature on the predation of cockles *Cerastoderma edule* (L.) by the shore crab *Carcinus maenas* (L.). *J. Exp. Mar. Biol. Ecol.* 111, 181-193.
- Sanchez-Salazar M.E., Griffiths C.L. & Seed R., 1987b. The interactive roles of predation and tidal elevation in structuring populations edible cockles *Cerastoderma edule* (L.). *Estuar. Coast. Shelf. Sci.* 25, 245-260.
- Sauriau P.G., 1992. *Les mollusques benthiques du bassin de Marennes-Oléron : estimation et cartographie des stocks non cultivés, compétition spatiale et trophique, dynamique de population de Cerastoderma edule (L.)*. Univ. Bretagne Occidentale., Brest., 292p.
- Scheiffarth G., 2001. The diet of bar-tailed godwits *Limosa lapponica* in the Wadden sea: combining visual observations and faeces analyses. *Ardea*. 89, 481-494.
- Seed R. & Brown R.A., 1977. A comparison of the reproductive cycles of *Modiolus modiolus* (L.), *Cerastoderma (=Cardium) edule* (L.), and *Mytilus edulis* L. in Strangford Lough, Northern Ireland. *Oecologia*. 30, 177-188.
- Seed R. & Brown R.A., 1978. Growth as a strategy for survival in two marine bivalves, *Cerastoderma edule* and *Modiolus modiolus*. *J.Anim.Ecol.* 47, 283-292.

- Smaal A.C., Vonck A.P.M.A. & Bakker M., 1997. Seasonal variation in physiological energetics of *Mytilus edulis* and *Cerastoderma edule* of different size classes. . *Journal of the Marine Biological Association of the United Kingdom*. 77, 817-838.
- Sutherland W.J., 1982. Spatial variation in the predation of cockles by oystercatchers at Traeth Melynog, Anglesey. I. the cockle population. *Journal of Animal Ecology*. 51, 481-489.
- Tebble N., 1966. *British bivalve seashells*. British Museum (Natural History). London.
- Thieltges D.W., 2006. Parasite induced summer mortality in the cockle *Cerastoderma edule* by the trematode *Gymnophallus choledochus*. *Hydrobiologia*. 559, 455-461.
- Triplet P., 1996. Comment les huîtres-pies *Haematopus ostralegus* consommateurs de coques *Cerastoderma edule* évitent les relations intra spécifiques. *Alauda*. 64, 1-6.
- Triplet P., Bacquet S., Lengigon A., Oget E. & Fagot C., 1999a. Effets de dérangements sur l'Huître-pie (*Haematopus ostralegus*) en baie de Somme. *Gibier Faune Sauvage*. 16(1), 45-64.
- Triplet P., Sueur F., Fagot C., Oget E. & Desprez M., 1999b. Réponses de l'huître-pie *Haematopus ostralegus* à une diminution de sa ressource alimentaire principale en baie de Somme : La coque *Cerastoderma edule*. *Alauda*. 67(2), 145-153.
- Wegeberg A.M. & Jensen K.T., 2003. In situ growth of juvenile cockles, *Cerastoderma edule*, experimentally infected with larval trematodes (*Himasthla interrupta*). *Journal of Sea Research*. 50, 37-43.
- West A. D., Yates M. G., McGrorty S. & Stillman R. A., 2007. Predicting site quality for shorebird communities: A case study on the Wash embayment, UK. *Ecological Modelling*. 202, 527-539.
- Wolff W.J., Mandos J.M. & Sandee A.J.J., 1981. Tidal migration of plaice and flounders as a feeding strategy. *Mar. Sci.* 15, 159-171.