



HAL
open science

ASXL1 mutation is associated with poor prognosis and acute transformation in chronic myelomonocytic leukaemia

Véronique Gelsi-Boyer, Virginie Trouplin, Julien Roquain, José Adelaïde, Nadine Carbuccia, Benjamin Esterni, Pascal Finetti, Anne Murati, Christine Arnoulet, Hacène Zerazhi, et al.

► To cite this version:

Véronique Gelsi-Boyer, Virginie Trouplin, Julien Roquain, José Adelaïde, Nadine Carbuccia, et al. ASXL1 mutation is associated with poor prognosis and acute transformation in chronic myelomonocytic leukaemia. *British Journal of Haematology*, 2010, 151 (4), pp.365. 10.1111/j.1365-2141.2010.08381.x. hal-00580698

HAL Id: hal-00580698

<https://hal.science/hal-00580698>

Submitted on 29 Mar 2011

HAL is a multi-disciplinary open access archive for the deposit and dissemination of scientific research documents, whether they are published or not. The documents may come from teaching and research institutions in France or abroad, or from public or private research centers.

L'archive ouverte pluridisciplinaire **HAL**, est destinée au dépôt et à la diffusion de documents scientifiques de niveau recherche, publiés ou non, émanant des établissements d'enseignement et de recherche français ou étrangers, des laboratoires publics ou privés.



**ASXL1 mutation is associated with poor prognosis
and acute transformation in chronic myelomonocytic
leukaemia**

Journal:	<i>British Journal of Haematology</i>
Manuscript ID:	BJH-2010-00989.R1
Manuscript Type:	Ordinary Papers
Date Submitted by the Author:	09-Jul-2010
Complete List of Authors:	Gelsi-Boyer, Véronique; Institut Paoli Calmettes, Biopathology; CRCM, UMR 891 Inserm, Molecular Oncology Trouplin, Virginie; CRCM, UMR 891 Inserm, Molecular Oncology Roquain, Julien; CRCM, UMR 891 Inserm, Molecular Oncology Adelaide, José; CRCM, UMR 891 Inserm Carbuccia, Nadine; CRCM, Molecular Oncology Esterni, Benjamin; Institut Paoli-Calmettes, Biostatistics Finetti, Pascal; CRCM, Molecular Oncology Murati, Anne; CRCM, UMR 891 Inserm, Molecular Oncology Arnoulet, Christine; Institut Paoli Calmettes, Biopathology Zerazhi, Hacène; Centre Hospitalier Général, Médecine Interne Onco-hématologie Fezoui, Hacene; Hopital Font Pre, Medecine Tadrist, Zoulika; Centre Hospitalier Général, Médecine Interne Onco-hématologie Nezri, Meyer; CH Martigues, Hematology CHAFFANET, Max; CRCM, UMR 891 Inserm, Molecular Oncology MARIE-JOELLE, MOZZICONACCI; Institut Paoli Calmettes, Biopathology Vey, Norbert; Institut Paoli Calmettes, Hematology Birnbaum, Daniel; Institut Paoli Calmettes, UMR 891; CRCM, UMR 891 Inserm, Molecular Oncology
Key Words:	CMML, MUTATIONS, CGH

**ASXL1 mutation is associated with poor prognosis
and acute transformation in chronic myelomonocytic leukaemia**

**Véronique Gelsi-Boyer,^{1,3,4,*} Virginie Trouplin,^{1,*} Julien Roquain,^{1,*} José
Adélaïde,¹ Nadine Carbuccia,¹ Benjamin Esterni,² Pascal Finetti,¹ Anne Murati,
^{1,3} Christine Arnoulet,³ Hacène Zerazhi,⁵ Hacène Fezoui,⁶ Zoulika Tadrict,⁷
Meyer Nezri,⁸ Max Chaffanet,¹ Marie-Joëlle Mozziconacci,^{1,3}
Norbert Vey^{3,9} and Daniel Birnbaum¹**

1. Centre de Recherche en Cancérologie de Marseille; Laboratoire d'Oncologie Moléculaire; UMR891 Inserm; Institut Paoli-Calmettes; Marseille, France.
2. Bureau d'études cliniques, Biostatistiques, Institut Paoli-Calmettes, Marseille, France.
3. Université de la Méditerranée Aix-Marseille II, Marseille, France.
4. Département de BioPathologie, Institut Paoli-Calmettes, Marseille, France.
5. Service de Médecine Interne Onco-Hématologie, Centre Hospitalier Général d'Avignon, France.
6. Service d'Onco-Hématologie, Hôpital Font-pré, Centre Hospitalier Intercommunal de Toulon, France.

- 1
2
3
4
5
6
7
8
9
10
11
12
13
14
15
16
17
18
19
20
21
22
23
24
25
26
27
28
29
30
31
32
33
34
35
36
37
38
39
40
41
42
43
44
45
46
47
48
49
50
51
52
53
54
55
56
57
58
59
60
7. Service de Médecine Interne Onco-Hématologie, Centre Hospitalier Général de Salon de Provence, France.
 8. Service de Médecine Interne, Centre Hospitalier Général, Martigues, France.
 9. Département d'Hématologie, Institut Paoli-Calmettes, Marseille, France

* Equal contributors.

Corresponding author: Véronique Gelsi-Boyer, UMR891 Inserm, 27 Bd. Leï Roure, 13009 Marseille, France. Tel. 33491758407. Email : gelsiv@marseille.fnclcc.fr

Keywords: array-CGH, ASXL1, chronic myelomonocytic leukemia, mutations, prognosis.

Running title: Gene mutations in CMML

Summary

Chronic myelomonocytic leukemia (CMML) is a haematological disease currently classified in the category of myelodysplastic syndromes/myeloproliferative neoplasm (MDS/MPN) because of its dual clinical and biological presentation. The molecular biology of CMML is poorly characterised. We studied a series of 53 CMML samples including 31 cases of myeloproliferative form (MP-CMML) and 22 cases of myelodysplastic forms (MD-CMML) using array-comparative genomic hybridisation (aCGH) and sequencing of 13 candidate genes including *ASXL1*, *CBL*, *FLT3*, *IDH1*, *IDH2*, *JAK2*, *KRAS*, *NPM1*, *NRAS*, *PTPN11*, *RUNX1*, *TET2* and *WT1*. Mutations in *ASXL1* and in the genes associated with proliferation (*CBL*, *FLT3*, *PTPN11*, *RAS*) were mainly found in MP-CMML cases. Mutations of *ASXL1* correlated with an evolution toward an acutely transformed state: all CMMLs that progressed to acute phase were mutated and none of the unmutated patients had evolved to acute leukaemia. The overall survival of *ASXL1* mutated patients was lower than that of unmutated patients.

Keywords: chronic myelomonocytic leukaemia, gene mutation, *ASXL1*, prognosis.

1
2
3
4
5
6
7
8
9
10
11
12
13
14
15
16
17
18
19
20
21
22
23
24
25
26
27
28
29
30
31
32
33
Chronic myelomonocytic leukaemia (CMML) is a haematopoietic disease currently classified by the WHO organization in a mixed category called MDS/MPN (myelodysplastic syndromes/myeloproliferative neoplasm) (Vardiman, 2002). Despite recent molecular improvements in the classification of myeloid neoplasms, diagnosis of CMML is still based on cytological criteria including persistent peripheral monocytosis greater than 1×10^9 /L, less than 20% blasts in the blood or bone marrow (BM) and bone marrow dysplasia in one or more myeloid lineage. The only molecular criterium is the absence of *BCR-ABL* transcript (Bennett *et al*, 1982, Vardiman, 2002). Because the blast number is a prognostic factor, CMML is divided in two types: type 1 with fewer than 5% blasts in the blood and 10% blasts in the bone marrow, and type 2 with between 5 to 19% in the blood or 10 to 19% in the bone marrow (Vardiman, 2002; Vardiman *et al*, 2009).

34
35
36
37
38
39
40
41
42
43
44
45
46
47
48
49
50
51
52
53
54
55
56
57
58
59
60
Classification of CMML has always been a matter of debate based on the two distinct clinical presentations: dysplastic with symptomatic complications of cytopenia, and proliferative with splenomegaly or hepatomegaly. In 1994, on the basis of an arbitrary threshold of peripheral leukocyte count (WBC), a dysplastic ($<13 \times 10^9$ /L) and a proliferative ($> 13 \times 10^9$ /L) forms have been recognised by the FAB group (Bennett, 1994), which we will call here MD-CMML and MP-CMML, respectively. Until recently, neither biologic nor prognostic data allowed the support of this distinction except that MP-CMML seemed to have more *RAS* mutations (Padua *et al*, 1988; Padua *et al*, 1998). Recently, new molecular alterations have been described in CMML. We and others have showed a high frequency of *RUNX1* and *TET2* mutations (Gelsi-Boyer *et al*, 2008; Kosmider *et al*, 2009b; Kuo *et al*, 2009). Mutations of *TET2* and *CBL* occur in 50% (Kosmider *et al*, 2009b) and 5%

1
2
3 (Makishima *et al*, 2009) of CMML cases, respectively. Recently, we described exon
4
5 12 mutations of *ASXL1* with a frequency about 44% (Gelsi-Boyer *et al*, 2009).
6
7
8 Currently, the impact of these alterations remains to be determined and the biological
9
10 and clinical presentations are still heterogeneous and benefit from opposite
11
12 therapeutics: cytotoxic in the MP form, haematopoietic growth factors in the MD form.
13
14

15 We propose here a comprehensive study of molecular alterations in a series of
16
17 53 CMMLs using genome-wide, high-density array-comparative genomic
18
19 hybridisation (aCGH) and exon-coding sequencing of 13 candidate genes. We show
20
21 that *ASXL1* mutations are associated with MP-CMML and that MP-CMMLs have
22
23 overall more alterations. Most importantly, we show that mutations in *ASXL1*
24
25 correlate with acute transformation of CMML and that the overall survival rate is
26
27 lower in *ASXL1* mutated patients than in unmutated patients.
28
29
30
31
32
33
34
35

36 Patients and methods

37 38 39 40 41 *Patients and samples*

42
43 A series of consecutive bone marrow samples obtained from 53 patients, who
44
45 all signed an informed consent, were collected. Among these were 31 MP-CMMLs
46
47 and 22 MD-CMMLs as initially defined by the FAB group with a leukocyte count
48
49 superior or inferior to 13×10^9 /L, respectively. The median age and leukocytosis
50
51 were 74 years and 30×10^9 /L respectively in the MP-CMML group and 76.5 years
52
53 and 9×10^9 /L respectively in the MD-CMML group. The main clinical and biological
54
55 data of the 53 samples are presented in **Supplementary Table I**. Most of the
56
57
58
59
60 samples (39 cases) were obtained from patients newly diagnosed. Fourteen were

1
2
3 known for a CMML either in therapeutic abstention (9 cases) or under symptomatic
4 treatment (5 cases). Most patients of the latter group (12/14) were at more of one
5
6 year after diagnosis. Six patients had received prior chemotherapy or radiotherapy
7
8 for an independent solid tumour. A normal karyotype was observed in 40 patients (20
9
10 MP-CMMLs and 20 MD-CMMLs); a del(20q)(q11q13) was found in 3 patients (2 MP-
11
12 CMMLs and 1 MD-CMML); a trisomy of a commonly affected chromosome (8, 19, 21)
13
14 was encountered in 4 MP-CMMLs. One MD-CMML had an 11q inversion, one MP-
15
16 CMML had a t(10;11)(p12;p15) and one MP-CMML had a t(1;3)(p36;q21). Nucleic
17
18 acid extraction was done as previously described (Gelsi-Boyer *et al*, 2008).
19
20
21
22
23
24
25
26

27 *Array comparative genomic hybridisation (aCGH)*

28
29 aCGH was done on all samples but two (HD-0397, HD-0715). Some of the
30
31 results have been published on 38 cases (Gelsi-Boyer *et al*, 2008; Gelsi-Boyer *et al*,
32
33 2009). Genomic imbalances were analysed by aCGH using 244K CGH Microarrays
34
35 (Hu-244A, Agilent Technologies, Massy, France) as previously described (Adélaïde
36
37 *et al* 2007; Etienne *et al*, 2007). Scanning was done with Agilent Autofocus Dynamic
38
39 Scanner (G2565BA, Agilent Technologies). Data analysis was done as previously
40
41 described (Murati *et al*, 2003; Barrett *et al* 2004,) and visualised with CGH Analytics
42
43 3.4 software (Agilent Technologies). Extraction data (\log_2 ratio) was done with CGH
44
45 analytics while normalised and filtered \log_2 ratios were obtained from « Feature
46
47 extraction » software (Agilent Technologies). Copy number changes were
48
49 characterised as reported (Adélaïde *et al*, 2007; Etienne *et al*, 2007).
50
51
52
53
54
55
56

57 *DNA sequencing*

58
59
60

1
2
3 Polymerase chain reaction (PCR) and direct sequencing were done using
4
5 standard conditions with gene-specific primers designed to amplify coding sequence
6
7 of *ASXL1* (exon 12), *CBL* (exons 8, 9), *FLT3* (exons 14, 15, 20), *IDH1/2* (exon 4),
8
9 *JAK2* (exon 14), *K*, *NRAS* (exons 1, 2), *NPM1* (exon 12), *PTPN11* (exons 3, 11),
10
11 *RUNX1* (exons 1 to 8), *TET2* (exons 3 to 11) and *WT1* (exons 7, 9) as previously
12
13 described (Gelsi-Boyer *et al*, 2008; Gelsi-Boyer *et al*, 2009, Kosmider *et al* 2009a,
14
15 Carbucciona *et al*, 2010; Kosmider, *et al* 2009b). Primers are described in Gelsi-Boyer
16
17 *et al*. (2008) and Rocquain *et al*. (2010b). Most PCR amplifications were done in a
18
19 total volume of 25 µl PCR mix containing at least 10 ng template DNA, Taq buffer,
20
21 200 µmol of each deoxynucleotide triphosphate, 20 pmol of each primer and 1 unit of
22
23 Hot Star Taq (Qiagen). PCR amplification conditions were as follows: 95°C 10 min;
24
25 95°C 30 sec, variable temperature 30 sec, 72°C 45 sec for 30 cycles; 72°C 10 min.
26
27 PCR products were purified using Millipore plate MSNU030. Two microliters of the
28
29 purified PCR products were used for sequencing using the Big Dye terminator v1.1
30
31 kit (Applied Biosystems). After G50 purification, sequences were loaded on an ABI
32
33 3130XL automat (Applied Biosystems). The sequence data files were analysed using
34
35 the SeqScape software and all mutations were confirmed on an independent PCR
36
37 product.
38
39
40
41
42
43
44
45
46
47

48 *Statistical Analysis*

49
50 Clinical and biological factors were taken at the time of sampling whose date
51
52 corresponds to the search for molecular alterations. The different quantitative
53
54 biological variables were compared by the Student test (t-test) and prevalence of
55
56 mutations or alterations detected by karyotype or aCGH by the Chi-square test.
57
58
59 Overall survival was defined by the time from the date of diagnosis to the date of
60

1
2
3 death. Patients still alive were right censored at the date of last contact. "Time-to-
4
5 AML" was defined by the time from the date of sampling to the date of acute
6
7 transformation. Patients still alive were right censored at the date of last contact. In
8
9 time-to-AML analysis, deaths occurring before AML transformation were treated as
10
11 competing event. To investigate the association between outcome and the different
12
13 covariates, univariate analysis was done using Log-Rank, Wald, and Gray tests. Cox
14
15 Proportional Hazard and Fine and Gray models were used in a multivariate
16
17 approach. Cumulative incidences of AML transformations were estimated by the
18
19 Prentice method. All statistical tests were two-sided at the 5% level of significance.
20
21
22
23
24
25
26
27
28
29

30 Results

31 32 33 34 *aCGH profiles of CMML*

35
36 We established the aCGH profiles of 51 of the 53 CMML cases. Results are
37
38 summarized in **Table I**. aCGH revealed alterations that were observed by
39
40 conventional cytogenetics (9/51) except for 3 patients with balanced translocations
41
42 (HD-0201, HD-0316, HD-0178), and for case HD-0367 with a del(20)(q11q13) for
43
44 which aCGH did not show a frank deletion at 20q probably due to the low number of
45
46 affected cells. For nine cases (17%) aCGH detected rare and limited losses or gains,
47
48 not visible on the karyotype. They affected very few genes, as previously described
49
50 (Gelsi-Boyer *et al*, 2008; Adélaïde *et al*, 2010; Rocquain *et al*, 2010a), including
51
52 some with known tumour suppressor function and leukaemogenic activity (*NF1*, *RB1*
53
54 and *TET2*). In 70% of cases (36/51) no copy number aberrations were observed.
55
56
57
58
59
60

1
2
3 *Mutations in candidate genes are frequent in CMML*
4

5 We studied coding sequences of 13 genes on the 53 cases (**Table I**). Some
6 results have been previously published (Gelsi-Boyer *et al*, 2008; Gelsi-Boyer *et al*,
7 2009; Kosmider *et al*, 2009b). In 25 cases (49%) we found 20 frameshift (including 7
8 times the same p.Gly646Trpfsx12) and 5 nonsense mutations in *ASXL1* exon 12. For
9 three patients (HD-0228, HD-0328, HD-0370), we could demonstrate that the
10 mutation was acquired because the mutation was absent from buccal smear DNA
11 (not shown). *CBL* exon 8 mutations were found in about 10% of cases (5/47); one
12 case (HD-0223) had a homozygous mutation. One case (HD-0367) had an internal
13 tandem duplication of *FLT3*. We found 5 *IDH* mutations in 48 cases (10%); all were in
14 *IDH2* (4 times the same p.Arg140Gln). Seven patients out of the 53 cases (13%) had
15 a *K* or *NRAS* mutation. We previously examined the sequence of exons 3 and 13 of
16 the *PTPN11* gene and mutations were found in two cases (Gelsi-Boyer *et al*, 2008).
17 Twelve out of 53 patients (21%) were mutated for *RUNX1* and 36% of patients were
18 mutated for *TET2*. No mutation was found in *NPM1*, *JAK2* and *WT1*. On the basis of
19 small deletions detected by aCGH and spanning only few genes, we searched for
20 mutations in an additional set of candidate genes: *ASXL2*, *BRAF*, *CBFB*, *CTNNB1*,
21 *KDM3B*, *KDM6A/UTX*, *KDM6B*, *NFIA*, *PYGO1*, *SPI1*, *RAF1*, and *TET3* but failed to
22 find any mutations (unpublished data) except in one patient (HD-0398) for which a
23 mutation in *NFIA* exon 2 was found and previously reported (Bernard *et al*, 2008).
24
25
26
27
28
29
30
31
32
33
34
35
36
37
38
39
40
41
42
43
44
45
46
47
48
49
50

51
52
53 *MP- and MD-CMMLs show quantitative differences in molecular alterations*
54

55 Genomic alterations detected by conventional cytogenetics or aCGH were
56 different in MP- and MD-CMML (**Table I**): 15 out of 31 MP-CMMLs and 4 out of 22
57
58
59
60

1
2
3 MD-CMMLs showed alterations. MP-CMMLs had more genomic alterations than MD-
4
5
6
7
8
9
10
11
12
13
14
15
16
17
18
19
20
21
22
23
24
25
26
27
28
29
30
31
32
33
34
35
36
37
38
39
40
41
42
43
44
45
46
47
48
49
50
51
52
53
54
55
56
57
58
59
60
CMMLs ($p=0.049$).

We compared the prevalence of the mutated genes in MP and MD-CMML. Nineteen of the 25 *ASXL1* mutations were found in 30 MP-CMMLs vs 6 in 22 MD-CMMLs. Mutations in *ASXL1* but not in *RUNX1* or *TET2* were more frequent in MP than in MD-CMMLs ($p=0.03$) (**Table I**). No difference was observed between the two forms for *CBL*, *FLT3*, *IDH1/2*, *PTPN11*, *RAS*, *RUNX1* or *TET2*. No *RAS* pathway mutation (*RAS* and *PTPN11*) was observed in MD-CMMLs. Mutations in proliferation-associated genes *CBL*, *FLT3*, *KRAS*, *NRAS* and *PTPN11* were mutually exclusive and taken as a whole significantly associated with MP-CMML (14/123 versus 1/91; $p=0.008$). Overall, the number of mutations (*ASXL1* and proliferation genes) was higher in MP than in MD-CMMLs ($p=0.018$).

Altogether, molecular events (mutations and genomic alterations) were more frequent in MP-CMMLs (69/273 events) than in MD-CMMLs (26/172) ($p=0.0018$).

Correlations between ASXL1 mutation and clinical and biological features in CMML

The main clinical and biological features of 51 CMML cases were examined with respect to *ASXL1* mutations (**Table II**). The presence of an *ASXL1* mutation was associated with higher WBC ($30 \times 10^9 /L$ vs $15 \times 10^9 /L$) ($p=0.006$), higher blood (p=0.005) and bone marrow monocytosis ($p=0.04$) and with lower level of blood haemoglobin ($p=0.03$). No difference was noted in mean cell volume, blood count of neutrophils and platelets, or bone marrow blasts. In MP-CMMLs, *ASXL1* mutation correlated with a lower level of haemoglobin ($p=0.03$) and platelet count ($p=0.002$)

1
2
3 and with a higher monocytosis ($p=0.04$). In MD-CMMLs, no correlations with *ASXL1*
4
5 mutation were observed.
6

7
8 Among *ASXL1* mutated cases (25/51), eleven (9 MP and 2 MD) had evolved
9
10 to acute transformation (**Table II**). For one case (HD-0398) DNA of the acute phase
11
12 was available; we looked for the *ASXL1* mutation and found the same alteration (not
13
14 shown). In contrast, no acute transformation was observed in the unmutated cases.
15
16 In other words, all transformed cases had an *ASXL1* mutation but not all *ASXL1*
17
18 mutated cases had progressed to AML. *ASXL1* mutation and acute transformation
19
20 were correlated ($p=0.0005$). Patient HD-0316 had progressed to acute phase but was
21
22 not included in the 51 patients since we could not determine the *ASXL1* status
23
24 because of lack of material at either stage.
25
26
27
28

29 Overall survival (median follow-up of 29.5 months) was analysed for the 53
30
31 patients. Median overall survival was 27.6 months (**Fig 1A**). *ASXL1* status could be
32
33 determined at the time of diagnosis for 51 patients. Kaplan-Meier analysis showed a
34
35 lower overall survival rate in the *ASXL1* mutated patients (**Fig 1B**). With respect to
36
37 MP/MD form, only a trend to a better survival of the MD patients was observed (not
38
39 shown). Within MP-CMML patients, cases mutated for *ASXL1* had a poorer survival
40
41 than the unmutated cases (not shown). We determined the cumulative incidence of
42
43 AML (**Fig 1C**) and observed that all the patients who developed AML did so within
44
45 two years and that *ASXL1* mutation had a strong impact on AML incidence (**Fig 1D**).
46
47 We did the same analysis for *TET2* mutational status. In contrast to *ASXL1*, *TET2*
48
49 had no impact on overall survival (not shown). Given the low number of events for
50
51 the other genes we did not look for any other clinical or biological correlation.
52
53
54
55
56

57 Univariate analysis of time-to-AML was done on 50 patients using as variables
58
59 *ASXL1* and *TET2* mutational status and MP/MD form, monocytosis, blast count in
60

1
2
3 bone marrow, anemia, and CMML1/2 type. The following variables showed
4
5 significance: *ASXL1* status ($p=0.0002$; 24-months incidence: 0.48, confidence
6
7 interval 95: [0.26-0.71]), monocytosis in peripheral blood ($p=0.042$; 24-months
8
9 incidence: 0.25, confidence interval 95: [0.12-0.38]; hazard ratio: 1.05, confidence
10
11 interval 95: [1-1.09]), blast count ($p=0.0011$; 24-months incidence: 0.25, confidence
12
13 interval: [0.12-0.38]; hazard ratio: 1.18, confidence interval: [1.07-1.3]) and CMML1/2
14
15 ($p=0.014$; CMML1 24-months incidence: 0.16, confidence interval: [0.04-0.28],
16
17 hazard ratio: 1; CMML2 24-months incidence: 0.58, confidence interval: [0.23-0.93],
18
19 hazard ratio: 3.96, confidence interval: [1.34-11.7]). A multivariate analysis of time-to-
20
21 AML was done using Cox regression model and the same variables. Only the *ASXL1*
22
23 status retained significant prognostic impact ($p<0.0001$). Thus, in CMML, *ASXL1*
24
25 mutation is an unfavourable prognostic factor for overall survival and progression to
26
27 AML.
28
29
30
31
32
33
34
35
36
37
38
39
40
41
42
43
44
45
46
47
48
49
50
51
52
53
54
55
56
57
58
59
60

Discussion

We established the genomic profiles of a series of 53 CMMLs by using aCGH and sequencing of 13 candidate genes.

ASXL1 is the most frequently mutated gene in CMML

In more than two-thirds of cases aCGH profiles did not show any copy number aberrations. In few cases, small copy number aberrations were indicative of genes known (*NF1*, *RB1*, *TET2*) or suspected (*SH3KBP1*, *RAD21*) (Adélaïde *et al*, 2010;

1
2
3 Rocquain *et al*, 2010a) to be involved in leukaemogenesis. MP-CMMLs had more
4
5 genomic alterations than MD-CMMLs.
6
7

8 We studied 13 candidate genes. We classified these genes into three groups.
9
10 The first group comprised five known and potential tumour suppressors and
11
12 transcription factors, the second group six genes associated with kinase activity,
13
14 signalling pathways and proliferation, and the third group the two *IDH* genes.
15
16 Hypothetically, CMML could result from a combination of mutation(s) in each of these
17
18 groups, and perhaps more yet-to-be discovered mutations. Overall, mutations of
19
20 *ASXL1*, *RUNX1* and *TET2* were prominent in particular in MP-CMMLs but the
21
22 difference between the two forms was not statistically significant for the three genes
23
24 taken as a whole ($p=0.19$). Mutations in these three genes were not mutually
25
26 exclusive. This is in contrast to what we observed in myelodysplastic syndromes
27
28 (MDS) and acute myeloid leukaemia where *RUNX1* and *TET2* mutations were
29
30 mutually exclusive but could each be associated with *ASXL1* mutations (Rocquain *et*
31
32 *al.*, 2010b). We have no explanation for this observation. *ASXL1* mutations are found
33
34 in all myeloid neoplasms (Carbuccia *et al*, 2009; Gelsi-Boyer *et al*, 2009; Carbuccia
35
36 *et al*, 2010; Kosmider *et al*, 2009a; Boulwood *et al*, 2010a; Boulwood *et al*, 2010b;
37
38 Sugimoto *et al*, 2010; Tefferi, 2010). In the present study *ASXL1* appeared as the
39
40 most frequently mutated gene in CMML, as it is in MDSs (Boulwood *et al*, 2010a;
41
42 Rocquain *et al*, 2010b). In MDSs, *ASXL1* mutations are found in high-risk cases.
43
44
45
46
47
48
49

50 As previously observed (Gelsi-Boyer *et al*, 2008) mutations in the second
51
52 group of “proliferation” genes were mutually exclusive. The frequency of mutations of
53
54 *CBL* was in the range of what was observed recently (Makishima *et al*, 2009). With
55
56 two exceptions (a *CBL* mutation and an *NF1* deletion detected by aCGH), mutations
57
58 in these genes were a hallmark of MP-CMML and may explain the proliferative
59
60

1
2
3 features of this form. In agreement, it has recently been shown that *JAK2* mutations
4
5 are associated with MP-CMML (Ricci *et al*, 2010). However, in our series we did not
6
7 find any *JAK2* mutation. Overall, the number of mutations (*ASXL1* and proliferation
8
9 genes) was higher in MP-CMML than in MD-CMML. This is a molecular basis to the
10
11 separation of CMML in MP and MD forms initially defined by the FAB group.
12
13 However, the equal number of mutations of *RUNX1* and *TET2* in both forms
14
15 suggests a common mechanism of oncogenesis.
16
17
18

19
20
21
22 *ASXL1* mutation is associated with poor prognosis and acute transformation of
23
24 CMML
25

26
27 The MP and MD classification may have a molecular basis (Gelsi-Boyer *et al*,
28
29 2007; this work) but had no significant impact on prognosis in our series. Several
30
31 studies have similarly found that this classification does not by itself offer enough
32
33 prognostic information (Germing *et al*, 1998; Nosslinger *et al*, 2001; Gonzalez-
34
35 Medina *et al*, 2002). We have here shown that, in contrast, *ASXL1* mutation is
36
37 associated with both poor overall survival and acute transformation. In our series, no
38
39 unmutated cases had evolved to acute phase whereas the cases that had
40
41 progressed to acute leukaemia were all mutated (except for one case for which we
42
43 could not determine the *ASXL1* status). A multivariate analysis of time-to-AML
44
45 including *ASXL1* mutation and other factors revealed that only *ASXL1* status has
46
47 significant impact. However, *ASXL1* status was not significant in multivariate analysis
48
49 of overall survival (not shown), perhaps because of the limited number of cases or
50
51 the existence of confounding factors such as deaths by other causes. Some mutated
52
53 cases had not progressed to acute phase. This may be because patients had died
54
55 before experiencing acute leukaemia. This may have been the case for patients HD-
56
57
58
59
60

1
2
3 0230 and HD-0660, whose *ASXL1* mutated CMML progressed from CMML1 to
4
5 CMML2. For mutated patients still alive it could be a question of time. If this were the
6
7 case *ASXL1* mutation could be used to predict the risk of progression of CMML to
8
9 acute leukaemia. In contrast, *TET2* mutations had no impact. A previous study had
10
11 found prognostic impact of *TET2* mutation but only in CMML1 (Kosmider *et al*,
12
13 2009b).
14
15

16
17 *ASXL1* mutation is associated with aggressive forms in other myeloid
18
19 disorders, including high-risk MDSs, primitive myelofibrosis (Carbuccia *et al*, 2009),
20
21 secondary acute myeloid leukaemias (Carbuccia *et al*, 2010). If confirmed on a larger
22
23 series the data would endow *ASXL1* with such a prognostic value that its mutational
24
25 status may be systematically determined in hospital setting and that the management
26
27 of patients with mutation may be adapted. It could also be interesting to classify
28
29 CMMLs studied in clinical trials according to *ASXL1* status.
30
31
32
33
34
35
36
37
38

39 **Author contributions**

40
41 AM, CA, HZ HF, ZT, MN, MJM, and NV selected the cases, and provided and
42
43 reviewed the clinical and biological data. JA and MC generated and analyzed the
44
45 aCGH data. VT, JR, and NC generated and analyzed the sequencing data. BE and
46
47 PF did the statistical analyses. VGB and DB supervised the study and wrote the
48
49 manuscript. All authors approved the study and the manuscript.
50
51
52
53
54
55
56

57 **Acknowledgements**

58
59 We are grateful to the patients who accepted to participate in this study. The
60

work was supported by Inserm and Institut Paoli-Calmettes.

References

- Adélaïde, J., Finetti, P., Bekhouche, I., Repellini, L., Geneix, J., Sircoulomb, F., Charafe-Jauffret, E., Cervera, N., Desplans, J., Parzy, D., Schoenmakers, E., Viens, P., Jacquemier, J., Birnbaum, D., Bertucci, F. & Chaffanet, M. (2007) Integrated profiling of basal and luminal breast cancers. *Cancer Res*, **67**, 11565-11575.
- Adélaïde, J., Rocquain, J., Gelsi-Boyer, V., Carbucci, N., Birnbaum, D.J., Mozziconacci, M.J., Vey, N., Birnbaum, D. & Chaffanet, M. (2010) Gain of CBL-interacting protein: a possible alternative to CBL mutations in myelodysplastic syndromes and chronic myelomonocytic leukemia. *Leukemia*, **24**, in press.
- Barrett, M.T., Scheffer, A., Ben-Dor, A., Sampas, N., Lipson, D., Kincaid, R., Tsang, P., Curry, B., Baird, K., Meltzer, P.S., Yakhini, Z., Bruhn, L. & Laderman, S. (2004) Comparative genomic hybridization using oligonucleotide microarrays and total genomic DNA. *Proc Natl Acad Sci U S A*, **101**, 17765-17770.
- Bennett, J.M., Catovsky, D., Daniel, M.T., Flandrin, G., Galton, D.A., Gralnick, H.R. & Sultan, C. (1982) Proposals for the classification of the myelodysplastic syndromes. *Br J Haematol*, **51**, 189-199.
- Bennett JM, C.D., Daniel MT, et al (1994) The chronic myeloid leukaemias: guidelines for distinguishing chronic granulocytic, atypical chronic myeloid, and chronic myelomonocytic leukaemia. Proposals by the French-American-British Cooperative Leukaemia Group. *Br J Haematol*, **84**, 746-754.
- Bernard, F., Gelsi-Boyer, V., Murati, A., Giraudier, S., Trouplin, V., Adélaïde, J., Rey, J., Olschwang, S., Vainchenker, W., Chaffanet, M., Vey, N., Mozziconacci, M.J. & Birnbaum, D. (2008) Alterations of NFIA in chronic malignant myeloid diseases. *Leukemia*.
- Boulwood, J., Perry, J., Pellagatti, A., Fernandez-Mercado, M., Fernandez-Santamaria, C., Calasanz, M.J., Larrayoz, M.J., Garcia-Delgado, M., Giagounidis, A., Malcovati, L., Della Porta, M.G., Jadersten, M., Killick, S., Hellstrom-Lindberg, E., Cazzola, M. & Wainscoat, J.S. Frequent mutation of the polycomb-associated gene ASXL1 in the myelodysplastic syndromes and in acute myeloid leukemia. *Leukemia*, **24**, 1062-1065.
- Boulwood, J., Perry, J., Zaman, R., Fernandez-Santamaria, C., Littlewood, T., Kusec, R., Pellagatti, A., Wang, L., Clark, R.E. & Wainscoat, J.S. High-density single nucleotide polymorphism array analysis and ASXL1 gene mutation screening in chronic myeloid leukemia during disease progression. *Leukemia*, **24**, 1139-1145.
- Carbuccia, N., Murati, A., Trouplin, V., Brecqueville, M., Adélaïde, J., Rey, J., Vainchenker, W., Bernard, O.A., Chaffanet, M., Vey, N., Birnbaum, D. & Mozziconacci, M.J. (2009) Mutations of ASXL1 gene in myeloproliferative neoplasms. *Leukemia*, **23**, 2183-2186.
- Carbuccia, N., Trouplin, V., Gelsi-Boyer, V., Murati, A., Rocquain, J., Adélaïde, J., Olschwang, S., Xerri, L., Vey, N., Chaffanet, M., Birnbaum, D. & Mozziconacci,

- 1
2
3 M.J. Mutual exclusion of ASXL1 and NPM1 mutations in a series of acute
4 myeloid leukemias. *Leukemia*, **24**, 469-473.
- 5
6 Etienne, A., Carbuccia, N., Adélaïde, J., Bekhouche, I., Remy, V., Sohn, C., Sainty,
7 D., Gastaut, J.A., Olschwang, S., Birnbaum, D., Mozziconacci, M.J. &
8 Chaffanet, M. (2007) Rearrangements involving 12q in myeloproliferative
9 disorders: possible role of HMGA2 and SOCS2 genes. *Cancer Genet*
10 *Cytogenet*, **176**, 80-88.
- 11
12 Gelsi-Boyer, V., Cervera, N., Bertucci, F., Trouplin, V., Remy, V., Olschwang, S.,
13 Chaffanet, M., Vey, N., Mozziconacci, M.J. & Birnbaum, D. (2007) Gene
14 expression profiling separates chronic myelomonocytic leukemia in two
15 molecular subtypes. *Leukemia*, **21**, 2359-2362.
- 16
17 Gelsi-Boyer, V., Trouplin, V., Adélaïde, J., Aceto, N., Remy, V., Pinson, S.,
18 Houdayer, C., Arnoulet, C., Sainty, D., Bentires-Alj, M., Olschwang, S., Vey,
19 N., Mozziconacci, M.J., Birnbaum, D. & Chaffanet, M. (2008) Genome profiling
20 of chronic myelomonocytic leukemia: frequent alterations of RAS and RUNX1
21 genes. *BMC Cancer*, **8**, 299-315.
- 22
23 Gelsi-Boyer, V., Trouplin, V., Adélaïde, J., Bonansea, J., Cervera, N., Carbuccia, N.,
24 Lagarde, A., Prebet, T., Nezri, M., Sainty, D., Olschwang, S., Xerri, L.,
25 Chaffanet, M., Mozziconacci, M.J., Vey, N. & Birnbaum, D. (2009) Mutations of
26 polycomb-associated gene ASXL1 in myelodysplastic syndromes and chronic
27 myelomonocytic leukaemia. *Br J Haematol*, **145**, 788-800.
- 28
29 Germing U, G.N., Minning H, Heyll A, Aul C. (1998) Problems in the classification of
30 CMML--dysplastic versus proliferative type. *Leuk Res*, **22**, 871-878.
- 31
32 Germing U, S.C., Knipp S, Kuendgen A, Giagounidis A, Hildebrandt B et al. (2007)
33 Chronic myelomonocytic leukemia in the light of the WHO proposals.
34 *haematologica*, **92**, 974-977.
- 35
36 Gonzalez-Medina I, B.J., Torrequebrada A, Lopez A, Vallespi T & Massague I.
37 (2002) Two groups of chronic myelomonocytic leukaemia: myelodysplastic
38 and myeloproliferative. Prognostic implications in a series of a single center.
39 *Leuk Res*, **26**, 821-824.
- 40
41 Kosmider, O., Gelsi-Boyer, V., Cheok, M., Grabar, S., Della-Valle, V., Picard, F.,
42 Viguie, F., Quesnel, B., Beyne-Rauzy, O., Solary, E., Vey, N., Hunault-Berger,
43 M., Fenaux, P., Mansat-De Mas, V., Delabesse, E., Guardiola, P., Lacombe,
44 C., Vainchenker, W., Preudhomme, C., Dreyfus, F., Bernard, O.A., Birnbaum,
45 D. & Fontenay, M. (2009a) TET2 mutation is an independent favorable
46 prognostic factor in myelodysplastic syndromes (MDSs). *Blood*, **114**, 3285-
47 3291.
- 48
49 Kosmider, O., Gelsi-Boyer, V., Ciudad, M., Racœur, C., Jooste, V., Vey, N.,
50 Quesnel, B., Fenaux, P., Bastie, J.N., Beyne-Rauzy, O., Stamatoulas, A.,
51 Dreyfus, F., Ifrah, N., de Botton, S., Vainchenker, W., Bernard, O.A.,
52 Birnbaum, D., Fontenay, M. & Solary, E. (2009b) TET2 gene mutation is a
53 frequent and adverse event in chronic myelomonocytic leukemia.
54 *haematologica*, **94**, 1676-1681.
- 55
56 Kosmider, O., Gelsi-Boyer, V., Slama, L., Dreyfus, F., Beyne-Rauzy, O., Quesnel, B.,
57 Hunault-Berger, M., Slama, B., Vey, N., Lacombe, C., Solary, E., Birnbaum,
58 D., Bernard, O.A. & Fontenay, M. Mutations of IDH1 and IDH2 genes in early
59 and accelerated phases of myelodysplastic syndromes and
60 MDS/myeloproliferative neoplasms. *Leukemia*, **24**, 1094-1096.
- Kuo, M.C., Liang, D.C., Huang, C.F., Shih, Y.S., Wu, J.H., Lin, T.L. & Shih, L.Y.
(2009) RUNX1 mutations are frequent in chronic myelomonocytic leukemia

- and mutations at the C-terminal region might predict acute myeloid leukemia transformation. *Leukemia*, **23**, 1426-1431.
- Makishima, H., Gazzolli, H., Szpurka, H., Dunbar, A., Tiu, R., Huh, J., Muramatsu, H., O'Keefe, C., Hsi, E., Paquette, R.L., Kojima, S., List, A.F., Sekeres, M.A., McDevitt, M.A. & Maciejewski, J.P. (2009) Mutations of e3 ubiquitin ligase cbl family members constitute a novel common pathogenic lesion in myeloid malignancies. *J Clin Oncol*, **27**, 6109-6116.
- Murati, A., Adélaïde, J., Popovici, C., Mozziconacci, M.J., Arnoulet, C., Lafage-Pochitaloff, M., Sainty, D., Birnbaum, D. & Chaffanet, M. (2003) A further case of acute myelomonocytic leukemia with inv(8) chromosomal rearrangement and MOZ-NCOA2 gene fusion. *Int J Mol Med*, **12**, 423-428.
- Nosslinger, T., Reisner, R., Grüner, H., Tüchler, H., Nowotny, H., Pittermann, E. & Pfeilstöcker M. (2001) Dysplastic versus proliferative CMML--a retrospective analysis of 91 patients from a single institution. *Leuk Res*, **25**, 741-747.
- Onida, F. (2002) prognostic factors in chronic myelomonocytic leukemia: a retrospective analysis of 213 patients. *Blood*, **99**, 840-849.
- Padua, R.A., Carter, G., Hughes, D., Gow, J., Farr, C., Oscier, D., McCormick, F., Jacobs, A. (1988) RAS mutations in myelodysplasia detected by amplification, oligonucleotide hybridization, and transformation. *Leukemia*, **2**, 503-510.
- Padua, R.A., Guinn, B.A., Al-Sabah, A.I., Smith, M., Taylor, C., Pettersson, T., Ridge, S., Carter, G., White, D., Oscier, D., Chevret, S. & West, R. (1998) RAS, FMS and p53 mutations and poor clinical outcome in myelodysplasias: a 10-year follow-up. *Leukemia*, **12**, 887-892.
- Ricci, C., Fermo, E., Corti, S., Molteni, M., Faricciotti, A., Cortelezzi, A., Lambertenghi Deliliers, G., Beran, M. & Onida, F. RAS mutations contribute to evolution of chronic myelomonocytic leukemia to the proliferative variant. *Clin Cancer Res*, **16**, 2246-2256.
- Rocquain, J., Gelsi-Boyer, V., Adélaïde, J., Murati, A., Carbuccia, N., Vey, N., Mozziconacci, M.J., Birnbaum, D. & Chaffanet, M. (2010a) Alteration of cohesin genes in myeloid diseases. *Am J Hematol*, in press.
- Rocquain, J., Carbuccia, N., Trouplin, V., Raynaud, S., Murati, A., Nezri, M., Tadrist, Z., Olschwang, S., Vey, N., Birnbaum, D., Gelsi-Boyer, V. & Mozziconacci, M.J. (2010b) Combined mutations of ASXL1, CBL, FLT3, IDH1, IDH2, JAK2, KRAS, NPM1, NRAS, RUNX1, TET2 and WT1 genes in myelodysplastic syndromes and acute myeloid leukemias. *BMC Cancer*, in press.
- Sugimoto, Y., Muramatsu, H., Makishima, H., Prince, C., Jankowska, A.M., Yoshida, N., Xu, Y., Nishio, N., Hama, A., Yagasaki, H., Takahashi, Y., Kato, K., Manabe, A., Kojima, S. & Maciejewski, J.P. (2010) Spectrum of molecular defects in juvenile myelomonocytic leukaemia includes ASXL1 mutations. *Br J Haematol*, **150**, 83-87.
- Tefferi, A. (2010) Novel mutations and their functional and clinical relevance in myeloproliferative neoplasms: JAK2, MPL, TET2, ASXL1, CBL, IDH and IKZF1. *Leukemia*, **24**, 1128-1138.
- Vardiman J-W, H.N.-L. & Brunning R-D (2002) *the world health classification (WHO) of myeloid neoplasms*, *Blood*, **100**, 2292-2302.
- Vardiman, J.W., Thiele, J., Arber, D.A., Brunning, R.D., Borowitz, M.J., Porwit, A., Harris, N.L., Le Beau, M.M., Hellstrom-Lindberg, E., Tefferi, A. & Bloomfield, C.D. (2009) The 2008 revision of the WHO classification of myeloid neoplasms and acute leukemia: rationale and important changes. *Blood*, **114**, 937-951.

1
2
3
4
5
6
7
8
9
10
11
12
13
14
15
16
17
18
19
20
21
22
23
24
25
26
27
28
29
30
31
32
33
34
35
36
37
38
39
40
41
42
43
44
45
46
47
48
49
50
51
52
53
54
55
56
57
58
59
60

For Peer Review

Table I. Mutations of candidate genes in a series of CMML.

Case	Sex/Age (years)	Diagnosis	RUNX1 (exons 1-8)	TET2 (exons 3-11)	ASXL1 (exon 12)	NPM1 (exon 12)	WT1 (exons 7, 9)	CBL (exons 8, 9)	FLT3 ITD/TKD	JAK2 (V617F)	KRAS (exons 1, 2)	HRAS (exons 1, 2)	PTPN11 (exons 3, 13)	IDH1 (exon 4)	IDH2 (exon 4)	Number of altered genes	Karyotype	aCGH
HD-0176	M/42	MP-CMML1	no	no	no	no	no	no	no	no	no	p.Gly12Asp	no	no	no	0	46,XY[20]	gain 7p21 (AHR), Xp22.3HS
HD-0182	F/74	MP-CMML1	no	no	no	no	no	no	no	no	no	no	no	no	no	1	45,X,-X[20]	loss X
HD-0200	M/71	MP-CMML1	no	no	no	no	no	no	no	p.Ala149Val	no	no	no	no	no	1	46,XY[20]	no CNA
HD-0201	M/87	MP-CMML1	no	no	p.Leu1208HisfsX9	no	no	no	no	p.	p.Ala157Gly	no	no	no	no	2	46,XY,t(10;11)(p12;p15)[13]46,XY[7]	no CNA
HD-0223	M/85	MP-CMML1	no	splicing defect	p.Arg1068X	no	no	p.Phe418Ser (hom)	no	no	no	no	no	no	no	3	46,XY[20]	loss 13q14 (RB1), 15q21, 15q22
HD-0228	M/70	MP-CMML1	no	p.Trp1198X	p.Trn838LeufsX2 (nc)	no	no	no	no	p.Gly12Ser	no	no	no	no	no	3	46,XY[20]	gain Xp22
HD-0229	M/87	MP-CMML2	no	p.Gln1191X	no	no	no	no	no	no	no	no	no	no	no	1	46,XY[20]	no CNA
HD-0257	F/71	MP-CMML1	no	no	no	no	no	no	no	no	no	no	no	p.Arg140Gln	no	1	46,XX[20]	no CNA
HD-0272	F/79	MP-CMML1	no	p.Arg1452X p.Tyr1560LeufsX18	p.Gly648TrpfsX12	no	no	no	no	no	p.Gly13Asp	na	no	no	no	3	46,XX[20]	no CNA
HD-0273	M/76	MP-CMML1	no	p.Gly1361Ser	p.Lys885GlnfsX6	no	no	no	no	no	no	no	no	p.Arg140Gln	no	3	46,XY[20]	no CNA
HD-0316	M/65	MP-CMML1	p.Pro425Leu	na	na	no	na	na	na	no	no	no	p.Asp61Tyr	na	na	2	46,XY[20]	losses 3q22-24 (EPH1, NFK1),
HD-0318	M/69	MP-CMML1	p.Arg168X	no	p.Gln768X	na	na	na	na	na	na	na	na	na	na	2	46,XY,del(20)(11q13)[20]	loss 20q11-q13
HD-0320	F/74	MP-CMML2	splicing defect	p.Arg1404X	p.Gly648TrpfsX12	no	no	no	no	no	no	no	p.Ala727Trn	no	no	4	47,XX,-8[20]	tri 8
HD-0321	M/55	MP-CMML2	p.Arg166X	no	p.His630ProfsX66	no	no	no	no	no	no	no	no	no	no	2	46,XY[20]	loss 3q23 (GLI1, CRTA)
HD-0322	F/61	MP-CMML1	no	no	no	no	no	no	no	no	no	no	no	no	no	0	46,XX[20]	no CNA
HD-0397	F/77	MP-CMML1	p.Tyr377LeufsX22	p.Cys1193Trn	p.Gly648TrpfsX12	no	no	no	no	no	no	p.Gly12Asp	no	no	no	4	47,XX,-8[20]	tri 8, loss 7q11 (CALM1)
HD-0366	M/78	MP-CMML1	no	no	p.Ser848GlnfsX5 (nc)	na	na	na	na	na	na	na	na	na	na	1	46,XY[20]	no CNA
HD-0367	F/70	MP-CMML2	no	no	no	no	no	ITD	no	no	no	no	no	no	no	1	46,XX,inv(11)(p15q22)[20]	no CNA
HD-0370	M/70	MP-CMML2	no	no	p.Trn1271LysfsX10 (nc)	no	no	no	no	no	no	no	no	no	no	1	46,XY[20]	no CNA
HD-0376	F/65	MP-CMML2	no	no	no	no	no	no	p.	no	no	no	no	no	no	0	46,XX,t(13)(p36;q21)[20]	no CNA
HD-0397	F/71	MP-CMML1	no	no	no	no	no	no	no	no	no	no	no	no	no	0	46,XX[20]	na
HD-0398	M/62	MP-CMML1	no	no	p.Gly648TrpfsX12	no	no	no	no	no	no	no	no	no	no	1	47,XY,-19[17]46,XY[3]	tri 19
HD-0399	M/74	MP-CMML1	p.Ser141Leu	no	p.Gly648TrpfsX12	no	no	p.Cys439Tyr	no	no	no	no	no	no	no	3	46,XY[20]	no CNA
HD-0404	M/88	MP-CMML2	p.Arg201X	p.Asn1581IlefsX17	p.His630ProfsX66	no	no	no	no	p.	no	no	na	na	na	3	47,XY,-21[20]	tri 21
HD-0485	M/63	MP-CMML2	p.Arg320X	p.Leu1252Pro	p.Gly648TrpfsX12	no	no	no	no	no	no	no	na	na	na	3	46,XY[20]	no CNA
HD-0627	F/87	MP-CMML1	no	no	p.Arg1068X	no	no	p.Cys404Tyr (hom)	no	no	no	no	no	no	no	2	46,XX,del(20)(1q11q13)[8]46,XX[18]	no CNA
HD-0669	M/88	MP-CMML1	no	no	p.Ala611ArgfsX3	no	no	no	no	no	no	no	no	no	no	1	46,XY[20]	no CNA
HD-0671	F/71	MP-CMML1	p.Lys110Arg	no	p.Tyr591X	no	no	no	no	no	no	no	na	no	no	2	47,XX,-19[8]46,XX[12]	loss 17q11 (NF1), tri 19
HD-0707	M/85	MP-CMML1	no	no	no	no	no	p.Tyr377His	no	no	no	no	no	no	no	1	46,XY[20]	no CNA
HD-0715	M/69	MP-CMML1	no	no	no	no	no	no	no	no	no	no	no	no	no	0	46,XY[20]	na
HD-0723	M/83	MP-CMML1	no	no	p.T213IlefsX3	no	no	no	no	no	no	p.Gly12Val	na	no	p.Arg140Gln	3	46,XY[20]	no CNA
HD-0178	M/88	MD-CMML1	no	no	no	no	no	no	no	no	no	no	no	no	p.Arg140Gln	1	46,XY,del(20)(1q11q13)[20]	loss 13q14 (RB1), 20q11-q13
HD-0197	M/59	MD-CMML1	p.Arg320X	no	no	na	na	na	na	na	na	na	na	na	na	1	46,XY[20]	no CNA
HD-0206	M/73	MD-CMML2	no	deletion	p.Asp878GlnfsX7	no	no	no	no	no	no	no	no	p.Arg172Lys	3	46,XY[20]	loss 4q24 (TET2)	
HD-0230	M/83	MD-CMML1	no	no	p.His630ProfsX66	no	no	no	no	no	no	na	no	no	no	1	46,XY[20]	no CNA
HD-0242	F/82	MD-CMML1	no	no	no	no	no	no	no	no	no	na	no	no	no	1	46,XX[25]	no CNA
HD-0254	F/83	MD-CMML2	no	no	no	no	no	no	no	no	no	na	no	no	no	0	46,XX[20]	loss 17q11 (NF1)
HD-0271	F/82	MD-CMML1	no	no	p.Pro1283GlnfsX17	no	no	no	no	no	no	na	no	no	no	1	46,XX[20]	no CNA
HD-0280	M/78	MD-CMML1	no	p.Ser1169ValfsX37	no	no	no	p.Cys404Tyr	no	no	no	no	na	no	no	1	45,X,-Y[19]46,XY[1]	loss Y
HD-0328	M/73	MD-CMML1	no	p.Gly355Asp (hom)	p.Gly648TrpfsX12	no	no	no	no	no	no	no	na	no	no	3	46,XY[20]	no CNA
HD-0330	M/76	MD-CMML1	p.Gly50GlnfsX4	na	na	na	na	na	na	na	na	na	na	na	na	1	46,XY[20]	no CNA
HD-0355	M/65	MD-CMML1	no	p.Cys1239Phe	no	no	no	no	no	no	no	no	no	no	no	1	46,XY[20]	no CNA
HD-0372	M/60	MD-CMML1	no	no	no	no	no	no	no	no	no	no	no	no	no	0	46,XY[20]	no CNA
HD-0380	F/82	MD-CMML1	no	p.Gln1141X	no	no	no	no	no	no	no	no	no	no	no	1	46,XX[20]	no CNA
HD-0388	F/71	MD-CMML1	p.Met123Ile	p.Leu1721PhefsX3	no	no	no	no	no	no	no	na	no	no	no	2	46,XX[20]	no CNA
HD-0396	M/70	MD-CMML1	no	p.Ser354X	no	no	no	no	no	no	no	na	no	no	no	1	46,XY[20]	no CNA
HD-0638	F/68	MD-CMML1	no	p.Leu1394TrpfsX4	no	no	no	no	no	no	no	na	no	no	no	1	46,XX[20]	no CNA
HD-0660	M/80	MD-CMML1	no	no	p.Arg693X	no	no	no	no	no	no	na	no	no	no	1	46,XY[20]	no CNA
HD-0703	M/74	MD-CMML1	no	no	no	no	no	no	no	no	no	na	no	no	no	0	46,XY[20]	no CNA
HD-0711	M/79	MD-CMML1	no	p.Gln649X	no	no	no	no	no	no	no	na	no	no	no	1	46,XY[20]	no CNA
HD-0712	M/41	MD-CMML1	no	no	no	no	no	no	no	no	no	na	no	no	no	0	46,XY[20]	no CNA
HD-0743	M/68	MD-CMML1	no	no	na	no	no	no	no	no	no	na	no	no	no	0	46,XY[20]	no CNA
HD-0755	M/46	MD-CMML1	no	p.Arg1359Cys	p.Trn6224enfsX11	no	no	no	no	no	no	na	no	no	no	2	46,XY[20]	no CNA

Samples are separated according to the white blood cell count: MP-CMML with WBC > 13x10⁹/L and MD-CMML with WBC < 13x10⁹/L.

hom: homozygous; nc : verified as not constitutional

na: non available

Table II. Clinical and biological features of *ASXL1* mutated and unmutated CMML patients.

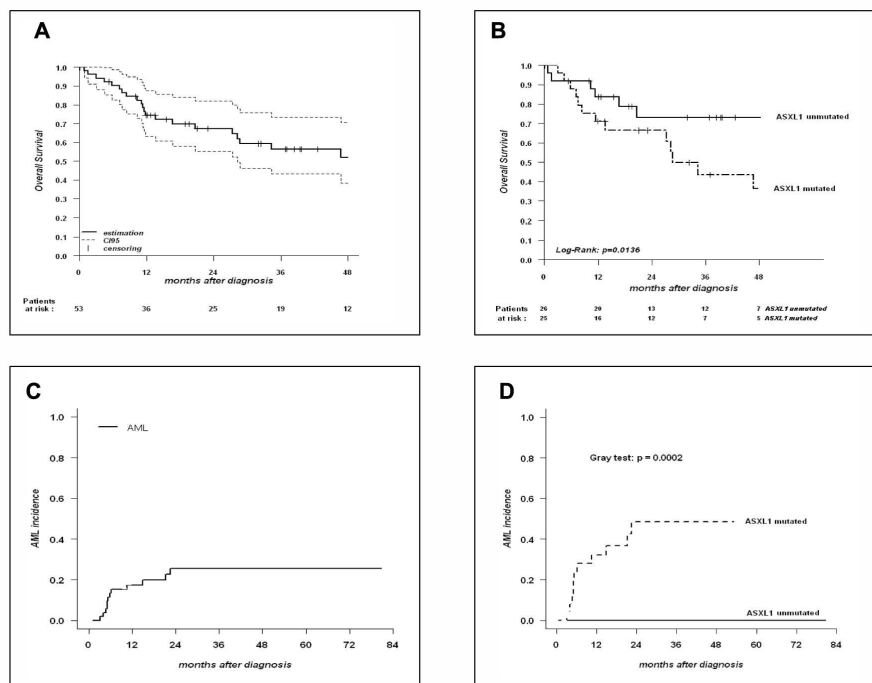
CMML	Number of patients	<i>ASXL1</i> mutated	<i>ASXL1</i> unmutated	p value
Sex ratio	51	3.16	1.27	0.23
Age: median (range)	51	74 (46-88)	71 (41-88)	0.39
Leukocyte count: median (range)	51	30 (6-188)	15 (2.8-26.4)	0.006
Haemoglobin level (g/dL): median (range)	50	10 (8.1-14.1)	12.5 (7.4-16.2)	0.03
MCV: median (range)	35	92 (86-106)	93 (79-101)	0.33
Neutrophil count (G/L): median (range)	41	15 (1.5-41)	2 (0.1-12.9)	0.07
Blood monocyte count (G/L): median (range)	50	4.65 (1-60)	2 (1-46)	0.005
Platelets count (G/L): median (range)	50	117.5 (34-420)	208 (39-660)	0.07
Bone marrow blasts (%): median (range)	51	7 (2-18)	6 (1-14)	0.11
Bone marrow monocytes (%): median (range)	50	20 (6-35)	15 (3-45)	0.04
MP-CMML	30	19	11	0.03
MD-CMML	21	6	15	
No acute transformation	51	14	26	0.0005
Acute transformation	51	11	0	
MP-CMML	Number of patients	<i>ASXL1</i> mutated	<i>ASXL1</i> unmutated	p value
Sex ratio		2.8	0.8	0.25
Age: median (range)	30	74 (55-88)	70.5 (42-87)	0.13
Leukocyte count: median (range)	30	35 (6-188)	17 (15-26.5)	0.08
Haemoglobin level (g/dL): median (range)	29	11 (8.1-12.5)	11.5 (8.5-15.2)	0.03
MCV: median (range)	21	92 (80-106)	88.5 (74-101)	0.11
Neutrophil count (G/L): median (range)	26	25 (7-41)	10 (7-12.9)	0.54
Blood monocyte count (G/L): median (range)	30	10 (1-60)	4.5 (1.2-46)	0.04
Platelets count (G/L): median (range)	29	118 (34-420)	272 (57-660)	0.002
Bone marrow blasts (%): median (range)	30	7 (2-16)	6 (2-14)	0.54
Bone marrow monocytes (%): median (range)	29	25 (6-35)	14 (3-45)	0.16
MD-CMML	Number of patients	<i>ASXL1</i> mutated	<i>ASXL1</i> unmutated	p value
Sex ratio	21	5	1.8	0.75
Age: median (range)	21	76.5 (46-83)	75 (41-88)	0.9
Leukocyte count: median (range)	21	8.9 (4-12)	7.1 (2.8-12.8)	0.6
Haemoglobin level (g/dL): median (range)	21	12 (8.9-14.1)	14 (7.4-16.2)	0.77
MCV: median (range)	13	89 (86-100)	93.5 (91-101)	0.46
Neutrophil count (G/L): median (range)	19	5 (1.5-7)	7.1 (0.1-7.7)	0.15
Blood monocyte count (G/L): median (range)	21	1.3 (1-4.5)	1.4 (1-2.6)	0.55
Platelets count (G/L): median (range)	21	122 (43-414)	130 (39-399)	0.5
Bone marrow blasts (%): median (range)	21	7 (4-18)	5 (4-13)	0.2
Bone marrow monocytes (%): median (range)	21	16 (10-20)	15 (10-13)	0.83

MCV: mean cell volume; In bold: significant p value

1
2
3
4
5
6
7
8 **Legends to the figure.**
9

10
11
12 **Fig 1.** Kaplan-Meier overall survival curves for all CMML patients (A) and
13 according to *ASXL1* mutational status (B). The number of patients at risk over time is
14 shown beneath each panel. (C) Cumulative incidence of progression to acute
15 myeloid leukaemia for all patients (C) and according to *ASXL1* mutational status (D).
16
17
18
19
20
21
22
23
24
25
26
27
28
29
30
31
32
33
34
35
36
37
38
39
40
41
42
43
44
45
46
47
48
49
50
51
52
53
54
55
56
57
58
59
60

Case	Sex/Age (years)	Diagnosis	RUNX1 (exons 1-8)	TET2 (exons 3-11)	ASXL1 (exon 12)	NPM1 (exon 12)	WT1 (exons 7, 9)	CBL (exons 8,9)	FLT3 ITD/TKD	JAK2 (V617F)	KRAS (exons 1, 2)	NRAS (exons 1, 2)	PTPN11 (exons 3, 13)	IDH1 (exon 4)	IDH2 (exon 4)	Number of altered genes	Karyotype	aCGH
1																		
2	HD-0176	M/42	MP-CMML1	no	no	no	no	no	no	no	no	no	no	no	no	0	46,XY[20]	gain 7p21 (AHR), Xp22 (SH3BP1)
3	HD-0182	F/74	MP-CMML1	no	no	no	no	no	no	no	no	p.Gly12Asp	no	no	no	1	45, X, -X?c[20]	loss X
4	HD-0200	M/71	MP-CMML1	no	no	no	no	no	no	no	p.Ala146Val	no	no	no	no	1	46,XY[20]	no CNA
5	HD-0201	M/87	MP-CMML1	no	no	p.Leu1266HisfsX9	no	no	no	no	p.=	p.Ala157Gly	no	no	no	2	46,XY,t(10;11)(p12;p15)[13]/46,XY[7]	no CNA
6	HD-0223	M/85	MP-CMML1	no	splicing defect	p.Arg1068X	no	no	p.Phe418Ser (hom)	no	no	no	no	nd	no	3	46,XY[20]	loss 13q14 (RB1), 15q21, 15q22 (DAPK2), gain Xp22
7	HD-0228	M/70	MP-CMML1	no	p.Trp1198X	p.Thr836LeufsX2 (nc)	no	no	no	no	p.Gly12Ser	no	no	no	no	3	46,XY[20]	no CNA
8	HD-0229	M/87	MP-CMML2	no	p.Gln1191X	no	no	no	no	no	no	no	na	no	no	1	46,XY[20]	no CNA
9	HD-0257	F/71	MP-CMML1	no	no	no	no	no	no	no	no	no	na	no	p.Arg140Gln	1	46,XX[20]	no CNA
10	HD-0272	F/79	MP-CMML1	no	p.Arg1452X p.Tyr1560LeufsX18	p.Gly646TrpfsX12	no	no	no	no	no	p.Gly13Asp	na	no	no	3	46,XX[20]	no CNA
11	HD-0273	M/76	MP-CMML1	no	p.Gly1361Ser	p.Lys888GlnfsX6	no	no	no	no	no	no	na	no	p.Arg140Gln	3	46,XY[20]	no CNA
12	HD-0316	M/65	MP-CMML1	p.Pro425Leu	na	na	no	na	na	na	no	no	p.Asp61Tyr	na	na	2	46,XY[20]	losses 3q22-24 (EPHB1, NEK11, MRAS...)
13	HD-0318	M/69	MP-CMML1	p.Arg166X	no	p.Gln768X	na	na	na	na	no	no	na	na	na	2	46,XY,del(20)(q11q13)[20]	loss 20q11-q13
14	HD-0320	F/74	MP-CMML2	splicing defect	p.Arg1404X	p.Gly646TrpfsX12	no	no	no	no	no	no	p.Ala72Thr	no	na	4	47,XX,+8[20]	tri 8
15	HD-0321	M/55	MP-CMML2	p.Arg166X	no	p.His630ProfsX66	no	no	na	na	no	no	no	no	no	2	46,XY[20]	loss 3p23 (GLB1, CRTAP)
16	HD-0322	F/61	MP-CMML1	no	no	no	no	no	no	no	no	no	no	no	no	0	46,XX[20]	no CNA
17	HD-0327	F/72	MP-CMML1	p.Tyr377LeufsX223	p.Cys1193Trp	p.Gly646TrpfsX12	no	no	no	no	no	p.Gly12Asp	no	no	no	4	47,XX,+8[20]	tri 8, loss 7q11 (CALN1)
18	HD-0366	M/78	MP-CMML1	no	no	p.Ser846GlnfsX5 (nc)	na	na	na	na	no	no	no	na	na	1	46,XY[20]	no CNA
19	HD-0367	F/70	MP-CMML2	no	no	no	no	no	no	ITD	no	no	no	no	no	1	46,XX,inv(11)(p15q22)[20]	no CNA
20	HD-0370	M/70	MP-CMML2	no	no	p.Thr1271LysfsX10 (nc)	no	no	no	no	no	no	no	no	no	1	46,XY[20]	no CNA
21	HD-0376	F/65	MP-CMML2	no	no	no	no	no	no	no	no	no	no	no	no	0	46,XX,(1;3)(p36;q21)[20]	no CNA
22	HD-0397	F/71	MP-CMML1	no	no	no	no	no	no	no	no	no	na	no	no	0	46,XX[20]	na
23	HD-0398	M/62	MP-CMML1	no	no	p.Gly646TrpfsX12	no	no	no	no	no	no	na	no	no	1	47,XY,+19[17]/46,XY[3]	tri 19
24	HD-0399	M/74	MP-CMML1	p.Ser141Leu	no	p.Gly646TrpfsX12	no	no	p.Cys396Tyr	no	no	no	no	no	no	3	46,XY[20]	no CNA
25	HD-0404	M/88	MP-CMML2	p.Arg201X	p.Asn1581IlefsX17	p.His630ProfsX66	no	no	no	no	no	no	na	na	na	3	47,XY,+21 [20]	tri 21
26	HD-0485	M/63	MP-CMML2	p.Arg320X	p.Leu1252Pro	p.Gly646TrpfsX12	no	no	no	no	no	no	na	no	no	3	46,XY[20]	no CNA
27	HD-0627	F/87	MP-CMML1	no	no	p.Arg1068X	no	no	p.Cys404Tyr (hom)	no	no	no	na	no	no	2	46,XX,del(20)(q11q13)[6]/46,XX[19]	no CNA
28	HD-0669	M/88	MP-CMML1	no	no	p.Ala611ArgfsX8	no	no	no	no	no	no	na	no	no	1	46,XY[20]	no CNA
29	HD-0671	F/71	MP-CMML1	p.Lys110Arg	no	p.Tyr591X	no	no	no	no	no	no	na	no	no	2	47,XX,+19[8]/46,XX[12]	loss 17q11 (NF1), tri 19
30	HD-0707	M/85	MP-CMML1	no	no	no	no	no	p.Tyr371His	no	no	no	na	no	no	1	46,XY[20]	no CNA
31	HD-0715	M/69	MP-CMML1	no	no	no	no	no	no	no	no	no	na	no	no	0	46,XY[20]	na
32	HD-0723	M/83	MP-CMML1	no	no	p.1213IlefsX3	no	no	no	no	no	p.Gly12Val	na	no	p.Arg140Gln	3	46,XY[20]	no CNA
33	HD-0178	M/88	MD-CMML1	no	no	no	no	no	no	no	no	no	no	no	p.Arg140Gln	1	46,XY,del(20)(q11q13)[20]	loss 13q14 (RB1), 20q11-q13
34	HD-0197	M/59	MD-CMML1	p.Arg320X	no	no	na	na	na	na	no	no	na	na	na	1	46,XY[20]	no CNA
35	HD-0206	M/73	MD-CMML2	no	deletion	p.Asp879GlnfsX7	no	no	no	no	no	no	na	no	p.Arg172Lys	3	46,XY[20]	loss 4q24 (TET2)
36	HD-0230	M/83	MD-CMML1	no	no	p.His630ProfsX66	no	no	no	no	no	no	na	no	no	1	46,XY[20]	no CNA
37	HD-0242	F/82	MD-CMML1	no	no	no	no	no	no	no	no	no	na	no	no	0	46,XX[25]	no CNA
38	HD-0254	F/83	MD-CMML2	no	no	no	no	no	no	no	no	no	na	no	no	0	46,XX[20]	loss 17q11 (NF1)
39	HD-0271	F/82	MD-CMML1	no	no	p.Pro1263GlnfsX17	no	no	no	no	no	no	na	no	no	1	46,XX[20]	no CNA
40	HD-0280	M/78	MD-CMML1	no	p.Ser1189ValfsX37	no	no	no	no	no	no	no	na	no	no	1	46,XX[20]	no CNA
41	HD-0328	M/73	MD-CMML1	no	p.Gly355Asp (hom)	p.Gly646TrpfsX12	no	no	p.Cys404Tyr	no	no	no	na	no	no	3	45,X,-Y[19]/46,XY[1]	loss Y
42	HD-0330	M/76	MD-CMML1	p.Gly50GlnfsX4	na	na	na	na	na	na	no	no	na	na	na	1	46,XY[20]	no CNA
43	HD-0355	M/65	MD-CMML1	no	p.Cys1289Phe	no	no	no	no	no	no	no	na	no	no	1	46,XY[20]	no CNA
44	HD-0372	M/60	MD-CMML1	no	no	no	no	no	no	no	no	no	na	no	no	0	46,XY[20]	no CNA
45	HD-0380	F/82	MD-CMML1	no	p.Gln1414X	no	no	no	no	no	no	no	na	no	no	1	46,XX[20]	no CNA
46	HD-0388	F/71	MD-CMML1	p.Met133Ile	p.Leu1721PhefsX8	no	no	no	no	no	no	no	na	no	no	2	46,XX[20]	no CNA
47	HD-0396	M/70	MD-CMML1	no	p.Ser354X	no	no	no	no	no	no	no	na	no	no	1	46,XY[20]	no CNA
48	HD-0638	F/68	MD-CMML1	no	p.Leu1394TrpfsX54	no	no	no	no	no	no	no	na	no	no	1	46,XX[20]	no CNA
49	HD-0660	M/80	MD-CMML1	no	no	p.Arg693X	no	no	no	no	no	no	na	no	no	1	46,XY[20]	no CNA
50	HD-0703	M/74	MD-CMML1	no	no	no	no	no	no	no	no	no	na	no	no	0	46,XY[20]	no CNA
51	HD-0711	M/79	MD-CMML1	no	p.Gln649X	no	no	no	no	no	no	no	na	no	no	1	46,XY[20]	no CNA
52	HD-0712	M/41	MD-CMML1	no	no	no	no	no	no	no	no	no	na	no	no	0	46,XY[20]	no CNA
53	HD-0743	M/68	MD-CMML1	no	no	no	no	no	no	no	no	no	na	no	no	0	46,XY[20]	no CNA



Kaplan-Meier overall survival curves for all CMML patients (A) and according to ASXL1 mutational status (B). The number of patients at risk over time is shown beneath each panel. (C) Cumulative incidence of progression to acute myeloid leukaemia for all patients (C) and according to ASXL1 mutational status (D).
529x396mm (96 x 96 DPI)

view

1
2
3
4
5
6
7
8
9
10
11
12
13
14
15
16
17
18
19
20
21
22
23
24
25
26
27
28
29
30
31
32
33
34
35
36
37
38
39
40
41
42
43
44
45
46
47
48
49

Supplementary Table I. Clinical and biological features of a series of CMML.

Patient	Sex/Age (years)	Diagnosis (WHO)	Antecedent of chemotherapy or radiotherapy	Organomegaly	Peripheral blood		Bone marrow		Acute transformation	Treatment at sampling
					WBC (G/L)	Monocytes (G/L)	Blasts (%)	Monocytes (%)		
MP-CMML										
HD-0176	M/42	CMML 1	no	no	17.3	1.2	2	12	no	none
HD-0182	F/74	CMML 1	no	no	16.0	1.9	3	3	no	none
HD-0200	M/71	CMML 1	no	no	22	7	8	32	no	TA
HD-0201	M/86	CMML 1	nd	splenomegaly	116.8	40	7	nd	yes	none
HD-0223	M/85	CMML 1	no	no	27.9	4.9	2	18	no	none
HD-0228	M/70	CMML 1	no	splenomegaly hepatomegaly	32	5	5	12	no	TA
HD-0229	M/87	CMML 2	yes	no	16	3.2	12	22	no	none
HD-0257	F/71	CMML 1	no	no	16.3	2	5	17	no	EPO
HD-0272	F/79	CMML 1	no	no	10	3	3	7	no	hydra
HD-0273	M/76	CMML 2	no	no	32.4	15	9	23	no	TA
HD-0316	M/65	CMML 2	no	no	37	5.7	15	12	no	none
HD-0318	M/69	CMML 1	yes	splenomegaly hepatomegaly	30	1	3	6	yes	none
HD-0320	F/74	CMML 2	no	no	43.5	14.5	15	16	yes	none
HD-0321	M/55	CMML 2	no	no	55	14.8	15	35	yes	none
HD-0322	F/61	CMML 1	no	no	38	3.5	3	6	no	hydra
HD-0327	F/72	CMML 1	no	no	188	43	9	27	yes	none
HD-0366	M/78	CMML 1	no	no	13.2	4.6	3	33	no	TA
HD-0367	F/70	CMML 2	yes	no	64	46	14	40	no	none
HD-0370	M/70	CMML 2	no	splenomegaly	25.4	2.5	18	10	yes	TA
HD-376	F/65	CMML 2	yes	no	18	2.9	11	14	no	transfusions
HD-0397	F/72	CMML 1	no	no	26.5	4.7	6	45	no	none
HD-0398	M/59	CMML 1	no	splenomegaly	36	3	6	20	yes	hydra
HD-0399	M/74	CMML 1	no	splenomegaly, microadenomegaly	6	2	6	30	no	hydra + EPO
HD-0404	M/89	CMML 1	no	no	35	12	16	34	no	none
HD-0485	M/63	CMML 2	no	no	14.7	4.4	12	22	no	none
HD-0627	F/86	CMML 1	no	splenomegaly	41.7	10	5	28	no	none
HD-0669	M/88	CMML 1	no	no	28.4	6.8	8	37	no	TA
HD-0671	F/71	CMML 2	no	no	35.9	4.7	15	30	yes	none
HD-0707	M/85	CMML 1	no	no	11.8	2.25	4	28	no	hydra
HD-0715	M/69	CMML 1	no	no	15	1.4	7	6	no	none
HD-0723	M/83	CMML 1	no	no	17.9	2.87	5	12	yes	TA
MD-CMML										
HD-0178	M/88	CMML 1	no	no	6.9	1.5	7	22	no	none
HD-0197	M/59	CMML 1	no	hepatomegaly	11.4	2.6	6	23	no	none
HD-0206	M/73	CMML 2	no	no	8.8	1.2	18	13	yes	none
HD-0230	M/86	CMML 1	no ?	no	10.4	1.78	8	20	no	none
HD-0242	F/82	CMML 1	no	no	6.9	1.9	5	10	no	none
HD-0254	F/83	CMML 2	no	no	9.1	1	13	15	no	none
HD-0271	F/82	CMML 1	no	no	9	1.35	6	18	no	none
HD-0280	M/79	CMML 1	no	no	7.1	1.3	7	18	no	TA
HD-0328	M/73	CMML 1	no	no	7.4	4.5	4	20	no	none
HD-0330	M/76	CMML 1	no	hepatomegaly	5.1	1.79	7	16	no	none
HD-0355	M/65	CMML 1	yes	no	4	1	7	12	no	none
HD-0372	M/60	CMML 1	no	no	12	1.1	4	10	no	none
HD-0380	M/82	CMML 1	no	splenomegaly polyadenomegaly	5.4	1.1	4	10	no	none
HD-0388	F/71	CMML 1	no	no	7.1	1.15	6	22	no	none
HD-0396	M/79	CMML 1	no	nd	10.3	2	4	11	no	none
HD-0638	F/68	CMML 1	no	no	5.1	1.38	8	18	no	none
HD-0660	M/80	CMML 1	no	microadenomegaly	6.1	1.7	5	15	no	TA
HD-0703	M/74	CMML 1	no	no	12.8	1.42	1	4	no	none
HD-0711	M/78	CMML 1	no	no	9.74	1.35	3	19	no	transfusions
HD-0712	M/41	CMML 1	no	no	9.8	1	3	6	no	none
HD-0743	M/68	CMML 1	no	no	2.8	2	7	19	no	none
HD-0755	M/46	CMML 1	yes	no	9.8	2.4	4	12	yes	none

MP-CMML : myeloproliferative form of chronic myelomonocytic leukaemia defined by a leukocytosis superior to $13 \times 10^9 /L$
MD-CMML : myelodysplastic form of chronic myelomonocytic leukaemia defined by a leukocytosis inferior to $13 \times 10^9 /L$
nd : no data
TA : therapeutic abstention
EPO : erythropoietin