



HAL
open science

EXPOSURE ASSESSMENT TO PATULIN FROM THE CONSUMPTION OF APPLE-BASED PRODUCTS

L. González-Osnaya, Jose Miguel Soriano, Juan Carlos Moltó, Jordi Mañez

► **To cite this version:**

L. González-Osnaya, Jose Miguel Soriano, Juan Carlos Moltó, Jordi Mañez. EXPOSURE ASSESSMENT TO PATULIN FROM THE CONSUMPTION OF APPLE-BASED PRODUCTS. *Food Additives and Contaminants*, 2007, 24 (11), pp.1268-1274. 10.1080/02652030701361556 . hal-00577458

HAL Id: hal-00577458

<https://hal.science/hal-00577458v1>

Submitted on 17 Mar 2011

HAL is a multi-disciplinary open access archive for the deposit and dissemination of scientific research documents, whether they are published or not. The documents may come from teaching and research institutions in France or abroad, or from public or private research centers.

L'archive ouverte pluridisciplinaire **HAL**, est destinée au dépôt et à la diffusion de documents scientifiques de niveau recherche, publiés ou non, émanant des établissements d'enseignement et de recherche français ou étrangers, des laboratoires publics ou privés.



EXPOSURE ASSESSMENT TO PATULIN FROM THE CONSUMPTION OF APPLE-BASED PRODUCTS

Journal:	<i>Food Additives and Contaminants</i>
Manuscript ID:	TFAC-2006-356.R1
Manuscript Type:	Original Research Paper
Date Submitted by the Author:	22-Mar-2007
Complete List of Authors:	González-Osnaya, L.; University of Valencia, Laboratory of Food Chemistry and Toxicology Soriano, Jose; University of Valencia, Laboratory of Food Chemistry and Toxicology Moltó, Juan Carlos; University of Valencia, Laboratory of Food Chemistry and Toxicology Mañez, Jordi; University of Valencia, Laboratory of Food Chemistry and Toxicology
Methods/Techniques:	Chromatography - GC/MS, Chromatography - HPLC, Exposure assessment, Mycology
Additives/Contaminants:	Mycotoxins - other
Food Types:	Fruit juices

SCHOLARONE™
Manuscripts

EXPOSURE ASSESSMENT TO PATULIN FROM THE CONSUMPTION OF APPLE-BASED PRODUCTS

L. González-Osnaya, J.M. Soriano*, J.C. Moltó, J. Mañes.

Laboratory of Food Chemistry and Toxicology. Faculty of Pharmacy. University of Valencia., Av. Vicent Andrés Estellés s/n. 46100 Burjassot. Valencia (Spain).

* Corresponding author. Fax: +34-963544954

E-mail: jose.soriano@uv.es (J.M. Soriano)

Patulin is a mycotoxin produced by species of *Penicillium*, *Aspergillus* and *Byssochyllum*. Several Scientific Committees classify patulin as mutagenic, embryotoxic and immunotoxic. It has been found as a natural contaminant of processed apple products and its presence may be indicative of the quality of fruit used in production. In this work a method for the analysis of patulin is described, this methodology is based on a simple liquid-liquid extraction with acetonitrile; patulin is analyzed using liquid chromatography with UV detection. Patulin identity was confirmed by GC-MS after its reaction with N-methyl-N-(trimethylsilyl) trifluoroacetamide. Fifty-three apple-containing products were analyzed with the method described in this work. Patulin was detected in 14 of the samples in a range of 1.5-50.9 $\mu\text{g L}^{-1}$; six of them were above the maximum permitted level by the European

1
2
3
4 Union. Based on these results and juice consumption by the Spanish adult population,
5
6 patulin estimated intake was 0.42 ng kg⁻¹ body weight per day.
7
8
9

10
11 *Keywords:* apple products, estimated daily intake, patulin
12
13

14 15 16 17 18 **Introduction** 19

20 Patulin is a mycotoxin produced by certain species of *Penicillium*, *Aspergillus*, and
21
22 *Byssochylamys*; these fungi generally grow in the post-harvest period of apples and
23
24 pears (Piemontese 2005). The optimal conditions for mycotoxin production by *P.*
25
26 *expansum* are: pH=6 and 25°C in pears and 17°C in apples. However, patulin may be
27
28 also formed in a temperature range of 0-25°C; mycotoxin production is inhibited when
29
30 the fungi are exposed to an atmosphere containing 3% CO₂ and 2% O₂ at 25°C (Doores
31
32 1983; Paster 1995; Podgorska 1992).
33
34
35
36
37
38
39

40 The effects caused by this mycotoxin are based on several studies made during the past
41
42 fifty years; these involve acute, chronic and cellular level effects. Patulin may be
43
44 neurotoxic, immunotoxic, immunosuppressive, genotoxic, teratogenic and carcinogenic.
45
46 The Ministry of Agriculture, Fisheries and Food from the United Kingdom has
47
48 classified patulin as mutagenic (MAFF 1993). A study performed by the Joint
49
50 FAO/WHO Expert Committee on Food Additives (JECFA) concludes that this
51
52 mycotoxin does not have either teratogenic or reproductive effects, but it shows
53
54 embriotoxicity along with maternal toxicity (JECFA 2002). At relatively high doses,
55
56 patulin has immunotoxic properties (WHO 1995). However, there is not adequate
57
58
59
60

1
2
3
4 evidence that patulin has a carcinogenic effect over experimental animals and this effect
5
6 has not yet been tested in humans; therefore, the International Agency for Research on
7
8 Cancer (IARC) classified patulin in group 3 or as “not carcinogenic to humans” (IARC
9
10 1986).
11
12

13
14
15
16 The natural presence of patulin in foodstuffs, mostly in apple-based products, has raised
17
18 certain international attention. Nowadays, the *Codex Alimentarius* recommends residual
19
20 patulin concentration to be less than 50 $\mu\text{g kg}^{-1}$ in apple-based food destined to human
21
22 consumption (Codex 2003); in some countries, e.g. Lithuania, Poland and Slovakia, the
23
24 maximum content in baby food and food destined for infants was set at 20 $\mu\text{g kg}^{-1}$ and
25
26 30 $\mu\text{g kg}^{-1}$, respectively (FAO 2004). The European Union (EU) established a maximum
27
28 level of 50 $\mu\text{g kg}^{-1}$ in fruit juices and fruit nectars; and 10.0 $\mu\text{g kg}^{-1}$ in the case of food
29
30 for infants, young children and other baby food (European Commission 2006).
31
32
33

34
35
36
37 Patulin, 4-hydroxy-4*H*-furo[3,2-*c*]pyran-2(6*H*)-one, is an unsaturated heterocyclic
38
39 lactone. It is a colourless, crystalline compound with a melting point of 110°C and with
40
41 a maximum UV absorption at 276 nm. Earlier methods for the determination of patulin
42
43 in apple juice utilized thin layer chromatography (TLC), like the AOAC original official
44
45 method (method number 974.18); this TLC method involved ethyl acetate extraction
46
47 and clean up on a silica gel column (Scott 1974). LC coupled to UV detection has been
48
49 extensively used given the polar nature of patulin, its characteristic UV absorption
50
51 spectrum and the requirement to accurately determine levels in a very low concentration
52
53 range (Sydenham et al. 1995). Nevertheless, interfering compounds, like 5-
54
55 hydroxymethylfurfural (HMF), can simultaneously elute with patulin from a reverse
56
57
58
59
60

1
2
3
4 phase column; therefore, an alternative approach based on the use of gas
5
6 chromatography-mass spectrometry (GC-MS) has been used to confirm the presence of
7
8 patulin in apple juice as its trimethylsilyl (TMS) derivative or as underivatized patulin
9
10 using on column injection (Lezi et al. 1981, Llovera et al. 1999, Rupp et al. 2000,
11
12 Roach et al. 2002, Tabata et al. 2004).
13
14

15
16
17
18 Patulin is soluble in water and polar organic solvents, it is not destroyed by heat, and it
19
20 is stable in acid medium but destroyed by alkaline pH or fermentation. Several methods
21
22 for extraction and clean up of samples, mainly fruit juices such as apple and pear juice,
23
24 have been established in recent years. In the AOAC official method 995.10, patulin is
25
26 extracted with ethyl acetate and isolated by extraction with a sodium carbonate solution
27
28 (Brause et al. 1996). Extraction with polar solvents such as ethyl acetate or acetone is
29
30 widespread. The following clean up can be performed with column chromatography
31
32 using silica gel 60, florisil or celite (Gokmen et al. 1999, Leggot et al. 2001). However,
33
34 the described methodologies use considerable solvent volumes (c.a. 25 mL) and
35
36 perform back to back extractions, therefore are time consuming.
37
38
39
40
41
42

43
44 Given the adverse effects that this mycotoxin may cause and the necessity to control its
45
46 presence in foodstuffs; the objective of this work was to monitor patulin levels in apple-
47
48 based products in order to determine the risk in its consumption by the Spanish
49
50 population.
51
52

53 54 55 56 **Materials and methods** 57 58 59 60

Chemicals

Patulin standard and N-Methyl-N-(trimethylsilyl) trifluoroacetamide (MSTFA) were purchased from Sigma (St. Louis, MO, USA). Patulin standard solution was prepared in ethyl acetate at $500 \mu\text{g mL}^{-1}$; it was kept wrapped in aluminum foil at -20°C . Patulin working solutions were prepared daily by evaporating to dryness a known volume of the standard solution and redissolving in mobile phase. LC grade acetonitrile was obtained from Merck (Darmstadt, Germany). Deionised water ($0.125 \mu\text{S}$) was obtained using a Milli-Q water purification system (Millipore, Bedford, MA, USA).

Samples

A total of fifty-three apple-based products were purchased in different stores and supermarkets from Valencia, Spain; 17 apple juices and beverages, 18 apple purees and compotes, 6 apple-containing dairy products, 3 ciders, 6 apple-containing breakfast cereals and snacks and 3 apples.

Extraction procedure and clean up

Recovery of the extraction method was determined by sample fortification. When solid samples were to be analyzed, 3 g of sample were placed in a centrifuge tube and fortified one hour before extraction with a patulin working solution at $0.05 \mu\text{g mL}^{-1}$; samples were extracted with 5 mL of acetonitrile and vortexed for 1 minute. Then, the mixture was centrifuged at 16°C , 4000 rpm during 20 min. The supernatant was evaporated to dryness with N_2 at 40°C . Once cooled, it was reconstituted in 500 μL of mobile phase.

1
2
3
4
5
6
7 In the case of clear, cloudy apple juices and nectars, the same procedure was followed
8
9 using 3 mL of sample.
10

11 ***Liquid Chromatography-UV (LC-UV)***

12
13
14 A Merck Hitachi (Kyoto, Japan) L-7100 HPLC quaternary pump, a Rheodyne Model
15
16 7125 injector (20 μL loop) and an L-7400 UV-detector were used. Chromatographic
17
18 conditions were: LC Phenomenex column Luna 5 μm C18 100 A (150 x 4.60 mm i.d.)
19
20 with a mobile phase consisting of water:acetonitrile (95:5 v/v) at a flow rate of 0.5 mL
21
22 min^{-1} . Detection of patulin was carried out using a wavelength of 276 nm.
23
24
25
26
27

28 ***Confirmation by gas chromatography/mass spectrometry (GC/MS)***

29
30
31 Analysis was carried out using a Trace GC (ThermoElectron Corporation, San Jose,
32
33 CA, USA) gas chromatograph with a ThermoFinnigan AS 2000 automatic injector and
34
35 the Xcalibur 1.2 software. Mass spectrometric data was collected in full-scan and SIM
36
37 modes. Full scan data was used for the preliminary selection of the best target m/z ions
38
39 and qualifiers. The SIM mode was used to maximize sensitivity and selectivity.
40
41
42
43
44

45
46
47 The column utilized was a fused silica column DB-5ms (J&W Scientific, Folsom CA,
48
49 USA) of 30 m x 0.25 mm i.d. column, d.f. = 0.25 μm . The carrier gas was helium at a
50
51 constant flow rate of 1.5 mL min^{-1} . The oven temperature was programmed at 140 $^{\circ}\text{C}$
52
53 and was ramped at 5 $^{\circ}\text{C}$ min^{-1} up to 190 $^{\circ}\text{C}$, after one min temperature further ramped at
54
55 30 $^{\circ}\text{C}$ min^{-1} up to 260 $^{\circ}\text{C}$, and then was held for 5 min. The GC-MS transfer line was
56
57 held at 298 $^{\circ}\text{C}$ and the ion source was fixed at 284 $^{\circ}\text{C}$. The MS was used under EI
58
59
60

(electronic impact) mode (-70 eV), the ions selected for patulin identification were as follows: m/z 136, 183 and 226.

Derivatization was made based on previous work by Melchert & Pabel (2004) with slight modifications; 100 μL of patulin working solution were derivatized with 100 μL of MSTFA and kept 20 min at 60°C in a heating block; the mixture was allowed to cool to room temperature for 15-20 min, then it was evaporated to dryness under a gentle stream of nitrogen and reconstituted in 300 μL of acetonitrile. A 1 μL aliquot was then analyzed by GC-MS. All positive extracts were analyzed with this protocol.

Results and discussion

Extraction and clean up

Under the established chromatographic conditions, it is possible to analyze clear apple juice by direct injection, prior filtration, into the system given that at the retention time of patulin (15.82 min) there are no interfering peaks; however in order to have a lower detection limit and not cause accumulation of substrate in the column, the described extraction and clean up methodology should be utilized. Including acetonitrile in the mobile phase mixture at 5 % (v/v) resulted in good separation by faster elution.

Most methodologies for patulin use liquid-liquid extraction with ethyl acetate as extraction solvent, the quantity used is considerably higher than that of acetonitrile used with the proposed method. Other methodologies utilize clean up cartridges or enzymes to clarify the extract (Gokmen et al. 1999, Leggot et al. 2001), the proposed methodology allows avoiding the use of these elements either by centrifugation or

1
2
3
4 proper chromatography conditions. In Figure 1b, the chromatogram of a naturally
5 contaminated apple juice sample is shown; patulin concentration in this sample is $1.5 \mu\text{g}$
6
7 L^{-1} . No interfering peaks can be observed at the time patulin is retained.
8
9

10
11 [Insert Figure 1 about here]
12

13
14 It was decided to perform a confirmatory procedure in case of finding naturally
15 contaminated samples, although LC methods for the determination of patulin have
16 mostly been preferred, a number of GC methods have been developed (Tarter et al.
17
18 1991, Ehman & Gaucher 1997, Roach et al. 2000, Llovera et al. 2005) since mycotoxins
19
20 from the group of trichothecenes and patulin are readily derivatized to their TMS-
21
22 derivatives and can be separated by 30m fused-silica capillary columns like the one
23
24 used in this study. This separation can be appreciated in Figure 1c.
25
26
27
28
29
30
31
32

33 ***Method performance***

34
35 Mean recovery of fortified apple juice and puree samples (n=5) at a level of 10 ng mL^{-1}
36
37 of patulin was 90.6 % with a relative standard deviation of 6.2 %, recovery remains
38
39 almost unchanged when working at levels of 5 and 15 ng mL^{-1} ; in these cases recovery
40
41 values were $87.8 \pm 5.4 \%$ and $89.1 \pm 6.1 \%$, respectively. Intra-day (n=5) and inter-day
42
43 (5 different days) variation values at a fortification level of 10 ng mL^{-1} were 4.4 and 6.3
44
45 %, respectively. These values do not exceed 15 %, which is the maximum variation for
46
47 certification exercises for several mycotoxins (Hald et al. 1993). To estimate the limit of
48
49 detection (LOD), apple juices and puree samples spiked at concentration levels of 10.0,
50
51 3.0, and 1.0 ng mL^{-1} were extracted and analyzed using the proposed procedure, the
52
53 LOD and limit of quantification (LOQ) values were calculated by applying the 3σ
54
55
56
57
58
59
60

1
2
3
4 criterion (Wenrich et al. 2000). The limits of detection and quantification for the
5
6 optimized method were 0.1 and 0.3 ng mL⁻¹, respectively.
7
8
9

10
11 Results indicate good recovery and reproducibility of the method proposed in this work.
12
13 This method offers several advantages, e.g. the quantity of solvents used is lessened and
14
15 it does not require a large sample amount. Therefore, it is a good alternative that allows
16
17 performing analysis with good precision and accuracy.
18
19
20

21 22 23 ***Incidence of patulin in apple-based products*** 24

25
26 Fifty-three apple-based products were analyzed. As it can be seen in Table 1, patulin
27
28 was detected in 26.4 % of the samples, mainly in apple juices and purees; six of these
29
30 samples had a patulin concentration over the maximum recommended limit in the EU.
31
32
33

34
35 The high incidence of patulin found in this study may be indicative of the poor quality
36
37 of fruit used in production, given that patulin producing fungi may grow in the post-
38
39 harvest period of pears and apples even at low temperatures. However, growth of the
40
41 blue mould (a distinctive characteristic of *P. expansum*) and subsequent production of
42
43 patulin is normally associated in those cases where the surface tissue of fruit has been
44
45 damaged, although the presence of patulin in otherwise visibly healthy fruit can not be
46
47 discounted. Fruit cleansing procedures and removal of damaged tissue, immediately
48
49 before pressing, do not necessarily eliminate all patulin present since patulin migration
50
51 to healthy tissue may be up to 1 cm (Taniwaki et al. 1992). The problems that carry
52
53 patulin intake and all mycotoxins in general may get worst if organic agriculture
54
55 becomes more popular in the future. A patulin concentration of 244-3993 µg L⁻¹ has
56
57
58
59
60

1
2
3
4 been reported in conventional apple juice (made from apples where pre and post-harvest
5 synthetic fungicides have been used); meanwhile in apple-based juices of organic
6 production, patulin levels up to 45000 $\mu\text{g L}^{-1}$ have been found. Patulin has also been
7 found in legumes, moist cereals, feeds, bread with levels ranging from 20-300 $\mu\text{g kg}^{-1}$
8 and in beet from 12-3700 $\mu\text{g kg}^{-1}$ (Lovejoy 1994, Trewavas 2001). Fermentation
9 processes destroy patulin, this is probably why this mycotoxin is not often found in
10 products like cider, unless apple juice was used after fermentation with the purpose of
11 homogenize alcohol concentration in the batch.
12
13

14 [Insert Table 1 about here]
15
16

17 The results on patulin contamination found in this study are similar to those reported in
18 other countries; in Italy, a survey on the occurrence of patulin was conducted on
19 commercial puree apple juices and mixed apple juices. Patulin could be quantified in
20 34.8 % of the samples ranging from 1.58 to 55.41 $\mu\text{g kg}^{-1}$ (Spadaro et al. 2007). Burda
21 (1992) found patulin in 23 % of the fruit product samples from the United Kingdom and
22 22 % of these samples contained patulin levels between 51 and 1130 $\mu\text{g L}^{-1}$. Among 100
23 apple juice samples surveyed for incidence of patulin in Spain, 82 samples were
24 contaminated with a mean of 13.8 $\mu\text{g L}^{-1}$ and seven of these samples had patulin levels
25 above 50 $\mu\text{g L}^{-1}$ (Prieta et al. 1994). In Iran, 33 % of the apple juice samples had patulin
26 levels higher than 50 $\mu\text{g L}^{-1}$ with a maximum level of 285 $\mu\text{g L}^{-1}$ and 56 % of the apple
27 juice concentrates with a patulin level higher than 50 $\mu\text{g L}^{-1}$ and a maximum level of μg
28 L^{-1} (Majid Cheraghali et al. 2005).
29
30
31
32
33
34
35
36
37
38
39
40
41
42
43
44
45
46
47
48
49
50
51
52
53
54
55
56

57 *Estimated daily intake of patulin* 58 59 60

1
2
3
4
5 Based on the results from this study on patulin contamination of apple juice and data on
6
7 juice consumption by the Spanish population, patulin daily intake was estimated to be
8
9 0.42 ng kg⁻¹ body weight per day (29 ng per person). This value was calculated
10
11 considering the body weight for the Spanish population (68 kg) used in the “Assessment
12
13 of dietary intake of Patulin by the population of EU Member States” (JECFA 2002);
14
15 and it is in agreement with the data presented in the forementioned report (12.06-54.27
16
17 ng per person). Patulin intake does not represent a risk for the adult consumer given that
18
19 the JECFA changed the provisional tolerable weekly intake (PTWI) of 7 µg kg⁻¹ body
20
21 weight per week to a provisional maximum tolerable daily intake (PMTDI) of 0.4 µg
22
23 kg⁻¹ body weight per day, based on a non observable effect level (NOEL) of 43 µg kg⁻¹
24
25 body weight per day and a safety factor of 100 (WHO 1995). Table 2 presents patulin
26
27 intake values based on patulin contamination data from this work and apple-based
28
29 product consumption data found in literature.
30
31
32
33
34
35
36
37

38 Based on the data exposed in this paper; by comparing patulin intake reported in Table
39
40 2 against the PMTDI, it could be stated that patulin present in apple based products
41
42 contributes from 0.1-21.6 % to the level considered at risk for human health caused by
43
44 patulin exposure in Spain alone; therefore it does not represent high risk for the
45
46 consumer of these products; however there is a higher risk for those groups more
47
48 vulnerable, like babies and children, where the consume of these products is superior
49
50 regarding to their body weight.
51
52
53

54 [Insert Table 2 about here]
55
56
57
58
59
60

1
2
3
4 These intake data is for orientation purposes only, given that in Spain there is not
5 official specific data on apple juice consumption. Despite of this, it is important to take
6 notice on the products that exceeded the maximum recommended level for patulin,
7 especially in products destined to infants and babies; therefore, measures to reduce
8 patulin level in this kind of products must be taken.
9
10
11
12
13
14
15
16
17

18 In conclusion, results indicate good recovery and reproducibility of the method
19 proposed in this work. It is a good alternative that allows performing analysis with good
20 precision and accuracy given that with this methodology; the volume of solvent used for
21 extraction is lessened being friendlier with the environment and cost effective. Patulin
22 was found in 26.4 % of the samples analyzed, however the estimated patulin daily
23 intake does not represent a serious risk for the adult consumer since it is far below the
24 PMTDI; but attention must be paid in groups with higher risk of exposure like infants.
25
26
27
28
29
30
31
32
33
34
35
36
37

38 *Acknowledgements*

39 This work has been supported by the Spanish Ministry of Education and Science (AGL-
40 2006-04438/ALI). L. González-Osnaya thanks the grant from CONACyT of México
41 (Consejo Nacional de Ciencia y Tecnología).
42
43
44
45
46
47
48
49

50 **References**

51 Brause AR, Trucksess MW, Thomas FS, Page WS. 1996. Determination of patulin in
52 apple juice by liquid chromatography: Collaborative study. Journal of the Association
53 of Official Analytical Chemists International 79:451–455.
54
55
56
57
58
59
60

1
2
3
4 Burda K. 1992. Incidence of patulin in apple, pear and mixed fruit products marketed in
5 New South Wales. *Journal of Food Protection* 55:796–798.
6

7
8
9 Doores S. 1983. The microbiology of apples and apple products. *CRC Critical Reviews*
10 *in Food Science and Nutrition* 19:133-149.
11

12
13
14 Ehman J, Gaucher M. 1977. Quantitation of patulin pathway using gas-liquid
15 chromatography. *Journal of Chromatography* 132:17-26.
16

17
18
19 European Union 2001. Official Journal of the European Communities (EC),
20 Commission regulation 1425/2003 amending Commission Regulation 466/2001 setting
21 maximum levels for certain contaminants in foodstuffs. Brussels: EU. p L203/1–3.
22

23
24
25 Food and Agricultural Organization. 2004. Worldwide regulations for mycotoxins in
26 food and feed in 2003. *Food and Nutrition Papers* No. 81.
27

28
29
30 Gimeno A, Martins M. 2003. Mycotoxins and mycotoxicoses in animals and humans.
31 *Special Nutrients, Inc. USA (Ed.). Talleres gráficos del SRL, Buenos Aires (Argentina).*
32 p 1-160.
33

34
35
36
37 Gokmen V, Acar J. 1999. Simultaneous determination of 5-hydroxymethylfurfural and
38 patulin in apple juice by reversed-phase liquid chromatography. *Journal of*
39 *Chromatography A* 847:69-74.
40

41
42
43
44 Hald B, Wood GM, Boenke A, Schurer B, Finglas P. 1993. Ochratoxin-A in wheat-an
45 intercomparison of procedures. *Food Additives and Contaminants* 2:185-207.
46

47
48
49 International Agency for Research on Cancer (IARC). 1986. Some naturally occurring
50 and synthetic food components, furocoumarins and ultraviolet radiation. *IARC*
51 *Monographs on the Evaluation of Carcinogenic Risk of Chemicals to Humans; IARC:*
52 *Lyon, France.* 40:83-98.
53
54
55
56
57
58
59
60

- 1
2
3
4
5
6
7
8
9
10
11
12
13
14
15
16
17
18
19
20
21
22
23
24
25
26
27
28
29
30
31
32
33
34
35
36
37
38
39
40
41
42
43
44
45
46
47
48
49
50
51
52
53
54
55
56
57
58
59
60
- Joint FAO/WHO Expert Committee on Food Additives. JECFA, 2002. Reports on tasks for scientific cooperation. Report of experts participating in Task 3.2.8. March 2002. Assessment of dietary intake of patulin by the population of EU Member States. Directorate-General Health and Consumer Protection. Berlin, Germany.
- CODEX STAN 235. 2003. Nivel máximo para la patulina en el zumo (jugo) de manzana y en los ingredientes de zumo (jugo) de manzana en otras bebidas.
- Legarda TM, Burdaspal PA. 2005. Patulin in apple based food destined to infants commercialized in Spain and other European countries using an adequate analysis method for patulin determination at levels under 10 micrograms per kilogram. *Alimentaria* 368:69–79.
- Leggot N, Shephard G. 2001. Patulin in South African commercial apple products. *Food Control* 12:73-76.
- Lezi S, Thonart P, Wathélet J, Blanpain P, Bechet J. 1981. Patulin production, purification, degradation and determination by gas chromatography. *Revue des Fermentations et des Industries Alimentaires* 36:122-129.
- Llovera M, Balcells M, Torres M, Canela R. 2005. Parallel synthesis: A new approach for developing analytical internal standards. Application to the analysis of patulin by gas chromatography-mass spectrometry. *Journal of Agricultural and Food Chemistry* 53:6643-6648.
- Llovera M, Viladrich R, Torres M, Canela R. 1999. Analysis of underivatized patulin by a GC-MS technique. *Journal of Food Protection* 62:202-205.
- Lovejoy SB. 1994. Are organic foods safer? Austin, TX: Texas Botanical Garden Society (TBGS) Newsletter. <http://www.greensmiths.com/organicfoods.htm>

1
2
3
4 Majid Cheraghali A, Mohammadi H, Amirahmadi M, Yazdanpanah H, Abouhossain G,
5 Zamanian F, Ghazi Khansari M, Afshar M. 2005. Incidence of patulin contamination in
6 apple juice produced in Iran. *Food Control* 16:165-167.

7
8
9
10
11 Melchert HU, Pabel E. 2004. Reliable identification and quantification of trichothecenes
12 and other mycotoxins by electron impact and chemical ionization-gas chromatography–
13 mass spectrometry, using an ion-trap system in the multiple mass spectrometry mode.
14 Candidate reference method for complex matrices. *Journal of Chromatography A*
15 1056:195–199.

16
17
18
19
20
21
22
23
24
25
26
27
28
29
30
31
32
33
34
35
36
37
38
39
40
41
42
43
44
45
46
47
48
49
50
51
52
53
54
55
56
57
58
59
60

Ministry of Agriculture, Fisheries and Food. MAFF. 1993. Mycotoxins; third report. In
food surveillance paper No. 36. London: HMSO. p 46-50.

Paster N, Huppert D, Barkai-Golan R. 1995. Production of patulin by different strains of
Penicillium expansum in pear and apple cultivars stored at different temperatures and
modified atmospheres. *Food Additives and Contaminants* 12:51-58.

Piemontese L, Solfrizzo M, Visconti A. 2005. Occurrence of patulin in conventional
and organic fruit products in Italy and subsequent exposure assessment. *Food Additives
and Contaminants* 22:437-442.

Podgorska E. 1992. Effect of *Penicillium expansum* culture conditions on patulin
production. *Acta Microbiologica Polonica* 41:89-95.

Prieta J, Moreno M, Diaz S, Suarez G, Dominguez L. 1994. Survey of patulin in apple
juice and children's apple food by the biphasic dialysis membrane procedure. *Journal of
Agricultural and Food Chemistry* 42:1701–1703.

Roach J, Brause A, Eisele T, Rupp H. 2002. HPLC detection of patulin in apple juice
with GC/MS confirmation of patulin identity. *Mycotoxins and food safety. Advances in
experimental medicine and biology* 504:135-140.

1
2
3
4 Roach J, White K, Trucksess M, Thomas F. 2000. Capillary gas chromatography/mass
5 spectrometry with chemical ionisation and negative ion detection for confirmation of
6 identity of patulin in apple juice. *Journal of the Association of Official Analytical*
7
8
9
10
11
12 Chemists International 83:104-112.

13
14 Rupp H, Turnipseed S. 2000. Confirmation of patulin and 5-hydroxymethylfurfural in
15
16
17
18
19
20
21
22
23
24
25
26
27
28
29
30
31
32
33
34
35
36
37
38
39
40
41
42
43
44
45
46
47
48
49
50
51
52
53
54
55
56
57
58
59
60
Official Analytical Chemists International 83:612-620.

21 Scott PM. 1974. Collaborative study of a chromatographic method for determination of
22
23
24
25
26
27
28
29
30
31
32
33
34
35
36
37
38
39
40
41
42
43
44
45
46
47
48
49
50
51
52
53
54
55
56
57
58
59
60
patulin apple juice. *Journal of the Association of Official Analytical Chemists*
International 57:621-625.

28 Spadaro D, Ciavorella A, Frati S, Garibaldi A, Gullino M. 2007. Incidence and level of
29
30
31
32
33
34
35
36
37
38
39
40
41
42
43
44
45
46
47
48
49
50
51
52
53
54
55
56
57
58
59
60
patulin contamination in pure and mixed apple juices marketed in Italy. *Food Control*
18:1098-1102.

35 Sydenham EW, Vismer HF, Marasas W, Brown N, Schlechter M, Van der Westhuizen
36
37
38
39
40
41
42
43
44
45
46
47
48
49
50
51
52
53
54
55
56
57
58
59
60
L, Rheeder J. 1995. Reduction of patulin in apple juice samples-influence of initial
processing. *Food Control* 6:195-200.

42 Tabata S, Iida K, Suzuki J, Kimura K, Ibe A, Saito K 2004. A quantification and
43
44
45
46
47
48
49
50
51
52
53
54
55
56
57
58
59
60
confirmation method of patulin in apple juice by GC/MS. *Journal of the Food Hygienic*
Society of Japan 45:245-249.

49 Taniwaki MH, Hoenderboom CJM, Vitali AD, Eiroa MNU. 1992. Migration of patulin
50
51
52
53
54
55
56
57
58
59
60
in apples. *Journal of Food Protection* 55:902-904.

54 Tarter EJ, Scott PM. 1991. Determination of patulin by capillary gas chromatography of
55
56
57
58
59
60
the heptafluorobutyrate derivative. *Journal of Chromatography* 538:441-446.

59 Trewavas A. 2001. Urban myths of organic farming. *Nature* 410:409-410.

1
2
3
4 Wennrich L, Popp P, Moder M. 2000. Determination of chlorophenols in soils using
5 accelerated solvent extraction combined with solid-phase microextraction. *Analytical*
6
7
8
9
10
11
12
13
14
15
16
17
18
19
20
21
22
23
24
25
26
27
28
29
30
31
32
33
34
35
36
37
38
39
40
41
42
43
44
45
46
47
48
49
50
51
52
53
54
55
56
57
58
59
60

Chemistry 72:546-551.

World Health Organization (WHO), 44th Report of the Joint FAO/WHO Expert
Committee on Food Additives, Tech. Report Series, Geneva, Switzerland. 1995, 859.

For Peer Review Only

1
2
3
4
5 **Figure caption**

6
7 **Figure 1.** a) Patulin working solution at 1 $\mu\text{g/mL}$, b) Naturally contaminated apple juice
8
9 sample with a patulin content of 1.5 $\mu\text{g/L}$, c) Gas chromatogram of TMS-patulin from
10
11 an apple juice sample.
12
13
14
15
16
17
18
19
20
21
22
23
24
25
26
27
28
29
30
31
32
33
34
35
36
37
38
39
40
41
42
43
44
45
46
47
48
49
50
51
52
53
54
55
56
57
58
59
60

For Peer Review Only

Table 1. Incidence of patulin in apple-based products.

Product	Incidence	Range ($\mu\text{g L}^{-1}$ or $\mu\text{g kg}^{-1}$)
Apple juice and apple-containing beverages	5/17	1.5-50.9
Apple compote and purees	6/18	7.7-28.4
Apple-containing dairy products	3/6	4.2-15.2
Cider	0/3	nd
Apples	0/3	nd
Apple-containing breakfast cereals and snacks	0/6	nd
Total	14/53	1.5-50.9

nd: not detected, under the LOQ

Table 2. Estimated patulin intake from apple-based products

Product	Individual daily consume ^(a) (mL)	Body weight (kg)	Patulin content ^(b) ($\mu\text{g L}^{-1}$ or $\mu\text{g kg}^{-1}$)	Patulin daily intake (ng kg^{-1} body weight)
Fruit juice	6	68	4.8	0.4
Apple juice	50	20	4.8	12.0
Apple juice	61	60	4.8	4.9
Apple juice	216	12	4.8	86.4
Apple juice	200	64	4.8	15.0

^(a) Apple based products consume by some Spanish population sectors reported at Reports on tasks for scientific cooperation 2002, Gimeno et al. 2003, Legarda & Burdaspal 2005.

^(b) Average patulin content from the apple juice and apple-containing beverages studied in this work.

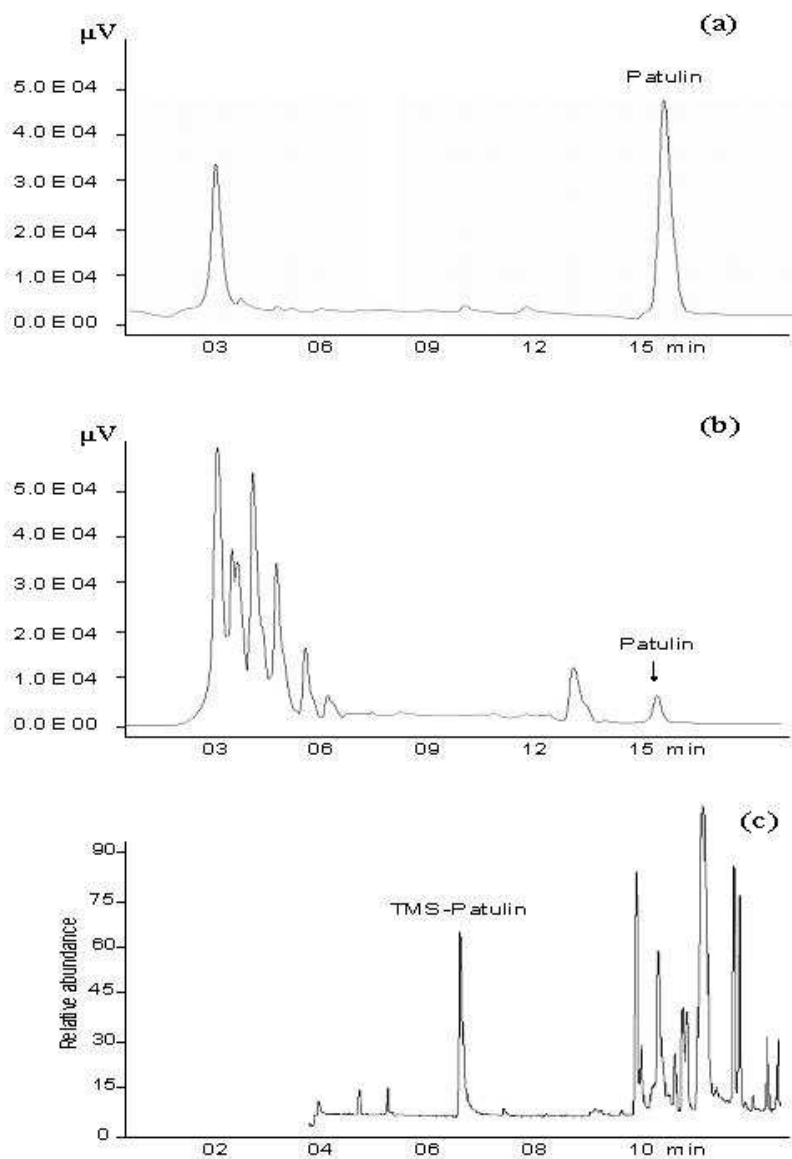


Figure 1. a) Patulin working solution at 1 µg/mL, b) Naturally contaminated apple juice sample with a patulin content of 1.5 µg/L, c) Gas chromatogram of TMS-patulin from an apple juice sample.
190x254mm (72 x 72 DPI)