



**HAL**  
open science

**Novel approach to fast determination of 64 pesticides  
using of ultra-performance liquid  
chromatography-tandem mass spectrometry  
(UPLC-MS/MS)**

Tomas Kovalczuk, Ondrej Lacina, Martin Jech, Jan Poustka, Jana Hajslova

► **To cite this version:**

Tomas Kovalczuk, Ondrej Lacina, Martin Jech, Jan Poustka, Jana Hajslova. Novel approach to fast determination of 64 pesticides using of ultra-performance liquid chromatography-tandem mass spectrometry (UPLC-MS/MS). *Food Additives and Contaminants*, 2008, 25 (04), pp.444-457. 10.1080/02652030701570156 . hal-00577414

**HAL Id: hal-00577414**

**<https://hal.science/hal-00577414>**

Submitted on 17 Mar 2011

**HAL** is a multi-disciplinary open access archive for the deposit and dissemination of scientific research documents, whether they are published or not. The documents may come from teaching and research institutions in France or abroad, or from public or private research centers.

L'archive ouverte pluridisciplinaire **HAL**, est destinée au dépôt et à la diffusion de documents scientifiques de niveau recherche, publiés ou non, émanant des établissements d'enseignement et de recherche français ou étrangers, des laboratoires publics ou privés.



**Novel approach to fast determination of 64 pesticides using of ultra-performance liquid chromatography-tandem mass spectrometry (UPLC-MS/MS)**

Journal:	<i>Food Additives and Contaminants</i>
Manuscript ID:	TFAC-2007-065.R1
Manuscript Type:	Original Research Paper
Date Submitted by the Author:	07-Jul-2007
Complete List of Authors:	Kovalczuk, Tomas; Institute of Chemical Technology Prague, Department of Food Chemistry and Analysis Lacina, Ondrej; Institute of Chemical Technology Prague, Department of Food Chemistry and Analysis Jech, Martin; Institute of Chemical Technology Prague, Department of Food Chemistry and Analysis Poustka, Jan; Institute of Chemical Technology Prague, Department of Food Chemistry and Analysis Hajslova, Jana; Institute of Chemical Technology Prague, Department of Food Chemistry and Analysis
Methods/Techniques:	Chromatography - UPLC-MS/MS, QuEChERS Clean-up
Additives/Contaminants:	Pesticide residues
Food Types:	Baby food, Fruit

SCHOLARONE™  
Manuscripts

1  
2  
3 **Novel approach to fast determination of pesticides using of ultra-**  
4 **performance liquid chromatography - tandem mass spectrometry (UPLC-**  
5 **MS/MS)**  
6  
7  
8

9  
10  
11 Tomáš Kovalczuk, Ondřej Lacina, Martin Jech, Jan Poustka and Jana Hajšlová\*,  
12

13  
14  
15 Institute of Chemical Technology, Dept. of Food Chemistry and Analysis, Technická 3, 166  
16 28 Prague 6, Czech Republic  
17

18  
19  
20 \* Corresponding author  
21

22 *E-mail:* jana.hajslova@vscht.cz  
23  
24  
25  
26  
27

28 **Abstract**  
29

30  
31 Rapid, high throughput method employing ultra-performance liquid chromatography  
32 hyphenated with tandem quadrupole mass spectrometry (UPLC-MS/MS) has been developed  
33 and optimized for simultaneous quantification and confirmation of 64 pesticide residues and  
34 their toxic metabolites in fruit extracts prepared by buffered QuEChERS procedure. Total  
35 time required for UPLC-MS/MS analysis was 8 min plus 2 min for re-equilibration to initial  
36 UPLC conditions. Performance characteristics were determined for apple extracts spiked at  
37 10  $\mu\text{g kg}^{-1}$ . Repeatability of measurements expressed as relative standard deviations was in  
38 the range 1.5-13% at this level for most analytes. Thanks to very low limits of quantification  
39 ( $< 10 \mu\text{g kg}^{-1}$  for majority of pesticides), optimized method allows reliable control of not only  
40 common MRLs set in EU regulation for various pesticides/fruit combinations but also  
41 uniform MRL 10  $\mu\text{g kg}^{-1}$  endorsed for baby food.  
42  
43  
44  
45  
46  
47  
48  
49  
50  
51  
52  
53  
54  
55  
56  
57  
58  
59  
60

## Introduction

Pesticides applied at various stages of food crops cultivation and/or during their post-harvest storage, play an important role in intensification of agricultural production. The number of active ingredients intended for control of undesirable pests and weeds currently exceeds 800 (Tomlin 2002, Fernández-Alba 2005, Hertherton et al. 2004). Avoiding occurrence of some pesticide residues in food supply is obviously impossible to achieve and, therefore, not surprisingly, health risk associated with a dietary intake of these chemicals has become a safety issue, both for toxicologists and consumers. To address these concerns, reliable and cost effective analytical methods have to be available to control respective regulation requirements.

With regard to the high number of target analytes concerned, multiresidue methods represent the only practical solution that enables meeting the requirements of current extensive surveillance/compliance programs, both in terms of scope of analysis and the number of samples analyzed. Historically, gas chromatography (GC) used to be the main technique employed for this purpose. As documented in recent reviews (Hertherton et al. 2004, Hernández et al. 2006), GC-based multiresidue methods are still widely used in control laboratories worldwide, nevertheless, it should be noted that their scope becomes more and more insufficient. Many registered pesticides are relatively polar compounds, not amenable to direct GC analysis, and on this account, development/validation of a broad-scope procedures employing high-performance liquid chromatography (HPLC) for sample separation and selective detection strategy, such as tandem mass spectrometry (MS/MS), has become an urgent task.

Most of published LC-MS based methods involve either extensive, cost and labour demanding clean-up procedures for processing of crude extracts, what, unavoidably, results in a loss of some target analytes. Similarly, solvent-exchange step, which is in some cases carried out prior to introduction of extract onto LC column, makes the sample preparation process less effective (Hertherton et al. 2004). Challenges exists both in innovation of sample handling strategies and use of novel instrumentation applicable for determinative step. Regarding the first aspect, significant increase of sample throughput, reduction of labour demands and improvement of cost-effectiveness can be obviously achieved by implementation of so called QuEChERS method (Quick, Easy, Cheap, Effective, Rugged, Safe) originally developed for GC-based analysis of multiple pesticide residues in

1  
2  
3 fruits/vegetables (Anastassiades et al. 2003). Acetonitrile extraction accompanied by  
4 simultaneous liquid-liquid partitioning is followed by dispersive SPE clean-up. According to  
5 recently modified version, either acetonitrile containing 1% acetic acid and acetate buffer  
6 (Lehotay et al. a. 2005) or citrate buffer (www.quechers.com) are used in the first step.  
7  
8 Regarding the measurement tools, current LC-MS/MS instruments enable, thanks to novel  
9 designs of ion sources and availability of fast electronics, determination of large range of  
10 pesticides in complex matrices at (ultra)trace levels and, in addition, also an on-line  
11 confirmation of residues identity (Hertherton et al. 2004, Leandro et al. 2006, Soler et al.  
12 2006). In older studies there was a tendency to develop LC-MS method only for a single  
13 residue or small multiresidue set of chemically related pesticides that were not amenable to  
14 GC analysis because of their high polarity or low thermal stability (e.g. Fernández et al.  
15 2006). Some of until now published LC-MS/MS-based methods (Hertherton et al. 2004,  
16 Hernández et al. 2006, Lehotay et al. b. 2005, Hancock et al. 2004, Janson et al. 2004, Klein  
17 et al. 2003, Alder et al. 2004, Ortelli et al. 2004) enable control of more than 50 pesticides in  
18 one chromatographic run, however, only one of them (Hertherton et al. 2004) allows  
19 simultaneous acquisition of two MS/MS transitions for all analytes in the method. It should be  
20 noted that only one MS/MS transition monitored for each analyte does not provide absolute  
21 confirmation of identity and further evidence may be required, especially in cases when  
22 particular MRL is exceeded (Commission document No. SANCO/10232/2006).

23  
24 In general terms, several confirmative strategies could be employed. However, some of them,  
25 such as a change of LC separation system intended for confirmation based on retention times  
26 conformity and/or switching to a MS ionization mode employing different principle (e.g. ESI  
27 vs. APCI) are not convenient or feasible from practical point of view. Medium and/or high  
28 resolution MS detectors (Commission document SANCO/10232/2006), e.g. those employing  
29 time-of-flight (TOF) mass analyzers, represent another alternative for detection of target  
30 analytes. It should be noted, however, that only hybrid instruments, such as quadrupole-time-  
31 of-flight (Q-TOF), allow full confirmation of particular analyte. Currently, most laboratories  
32 specialized in pesticide residue analysis prefer affordable low resolution MS/MS for analysis  
33 of target compounds, as an optimal option enabling both quantification and confirmation of  
34 target pesticides at trace levels (Hertherton et al. 2004, Hernández et al. 2006, Anastassiades  
35 et al. 2003, Lehotay et al. a,b 2005, Fernández et al. 2000, Hancock et al. 2004, Janson et al.  
36 2004, Klein et al. 2003, Alder et al. 2004, Ortelli et al. 2004, Leandro et al. 2006, Kovalczuk  
37 et al. 2006, Mezcuca et al. 2006, Díez et al. 2006, Zrostlíková et al. 2003). To correctly  
38  
39  
40  
41  
42  
43  
44  
45  
46  
47  
48  
49  
50  
51  
52  
53  
54  
55  
56  
57  
58  
59  
60

1  
2  
3 confirm detected pesticides minimally two specific MS/MS transitions monitored for each  
4  
5 analyte are then required (Soler et al. 2006, Leandro et al. 2006, Hertherton et al. 2004).

6  
7 Regarding instrumental set-up, most of current LC-MS/MS based multiresidue methods  
8  
9 employ conventional HPLC systems for separation of sample components. (Hertherton et al.  
10  
11 2004, Hernández et al. 2006, Lehotay et al. b. 2005, Hancock et al. 2004, Janson et al. 2004,  
12  
13 Klein et al. 2003, Alder et al. 2004, Ortelli et al. 2004, Soler 2006). The sufficient separation  
14  
15 of multiple residues (tens, even hundreds of analytes) in HPLC-MS/MS methods can be  
16  
17 accomplished as soon as within 20-30 min, however, the need to carry out post run column re-  
18  
19 equilibration may increase the total analysis time up to 30-40 min. On this account,  
20  
21 instrumental analysis becomes a limiting step in laboratory throughput. In theory, there are  
22  
23 also other strategies that can increase the speed of chromatographic separation such as  
24  
25 increase of mobile phase flow rate or the use of shorter columns (Kovalczuk et al. 2006),  
26  
27 however none of them is suitable for trace analysis of multiple pesticide residues in complex  
28  
29 matrices such as food. The recent introduction of ultra-performance liquid chromatography  
30  
31 (UPLC) system, such as Acquity™, is capable to operate conventional “HPLC size” columns  
32  
33 with small (1.7 µm) porous particles at pressures as high as 15000 psi (1025 bar) has offered a  
34  
35 new challenge to increase significantly number of analyzed samples per day. Under these  
36  
37 conditions, the van Deemter equation indicates that a significant gain in efficiency is not  
38  
39 diminished at increased flow rates of mobile phase. (Leandro et al. 2006). As demonstrated in  
40  
41 recently published studies (Leandro et al. 2006, Kovalczuk et al. 2006), the improvement of  
42  
43 several methods performance parameters including decrease of limits of detection (LODs) and  
44  
45 other characteristics depends on particular experimental set-up.

46  
47 The aim of presented study was to develop a fast multiresidue UPLC-MS/MS method with  
48  
49 performance characteristics fully complying with EU legislation requirements (Commission  
50  
51 document No SANCO/10232/2006), both for common fruit commodities and fruit-based baby  
52  
53 food. The potential of Acquity UPLC system (Waters) hyphenated with Quattro Premier XE  
54  
55 tandem quadrupole mass spectrometer (Waters) was demonstrated in determination of  
56  
57 multiple pesticide residues in apple extract prepared by QuEChERS procedure.

## 58 59 60 **Experimental**

### ***Chemicals and material***

Certified pesticide standards obtained from Dr. Ehrenstorfer GmbH (Germany) and/or Riedel  
de Haen (Germany) were used for preparation of individual stock standard solutions

(concentrations in the range 0.3–3 mg mL<sup>-1</sup>) in either methanol, acetonitrile or acetone:acetonitrile mixture (1:9, v/v) depending on the solubility of particular pesticide. These solutions were used for preparation of: (i) individual stock standard solutions in methanol (1–5 µg mL<sup>-1</sup>) for electrospray (ESI) source tuning and MS/MS transitions settings and (ii) preparation of mixed standard solution in acetonitrile (1 µg mL<sup>-1</sup>). The working standard solutions (0.25–5000 ng mL<sup>-1</sup>) used for calibration were then prepared from this solution by dilution with acetonitrile.

Deionised water for preparation of a mobile phase was produced by Milli-Q apparatus (Millipore, Germany). Ammonium acetate 99.99% was obtained from Sigma-Aldrich (Germany), acetonitrile (Sigma-Aldrich, Germany) and methanol (Merck, Germany) were HPLC gradient grade solvents for pesticide residue analysis. The glacial acetic acid 99.99+ was purchased from Sigma-Aldrich (Germany). Anhydrous magnesium sulfate, sodium acetate trihydrate and acetone were obtained from Penta (Czech Republic), and Bondesil-Primary-secondary amine (PSA, 40 µm) sorbent was purchased from Varian (USA). The magnesium sulfate was heated for 8 h at 520°C in a muffle furnace to remove any residual water. Apple samples free of pesticide residues were obtained from an ecological farm. Apple-based baby food was obtained from retail market.

### **Sample preparation**

The buffered QuEChERS procedure was employed within the pre-analytical step. Blank apples (obtained from organic farm) were used for preparation of blank extracts. Representative apple sample (3 kg) was thoroughly homogenized using 2094 Homogenizer (Foss Tecator, Sweden). 10 g of homogenate were weighted into PTFE centrifugation tube (50 mL) and shaken vigorously for 1 min with 1 % (v/v) acetic acid in acetonitrile. Anhydrous magnesium sulfate (4 g) and sodium acetate trihydrate (1.6 g) were added and the sample was then immediately vortexed (Ika-Werke, Germany) to prevent formation of coagulated magnesium sulfate. After shaking for 30 s, the samples were centrifuged (Hettich, Germany) at 11 000 RPM for 5 min. 2 mL of supernatant were transferred into another PTFE tube (14 mL) containing anhydrous magnesium sulfate (300 mg) and primary-secondary amine (PSA) sorbent (100 mg). After shaking by Vortex and centrifugation (11 000 RPM, 5 min), the supernatant was filtered through 0.2 µm PTFE filter (National Scientific, USA). All purified blank extracts were combined. 950 µL of this extract were then mixed with 50 µL of appropriate mixed working standard solution in acetonitrile and aliquot (5 µL) of this spiked



1  
2  
3 extract was then analyzed by UPLC-MS/MS. The step following UPLC-MS/MS method  
4 optimization was its application to apple-based baby food analysis.  
5  
6

### 7 ***UPLC-MS/MS Analysis***

8  
9 UPLC analyses were performed using an Acquity™ UPLC system (Waters, USA) equipped  
10 with Acquity™ UPLC BEH C<sub>18</sub> separation column (100 x 2.1 mm, 1.7 μm) (Waters, USA).  
11 The sample temperature as well as column temperature was maintained at 25 °C. The mobile  
12 phase contained 0.005 M ammonium acetate in deionised water (A) and methanol (B), the  
13 flow rate was 0.3 mL min<sup>-1</sup>.  
14  
15

16 For UPLC separation the gradient elution was employed, starting composition of 20% B,  
17 rising linearly to 100% B over 6 min, and then held for 2 min at 100% B. 2 min re-  
18 equilibration to initial mobile phase composition followed. Sample injection volume 5 μL was  
19 used in all experiments.  
20  
21

22 Identification/quantitation of target analytes was performed using the Quattro Premier XE  
23 tandem mass spectrometer (Waters, USA). The detector was operated in a positive  
24 electrospray (ESI+) ionization mode. Multiple reaction monitoring (MRM) conditions  
25 (collision energy and cone voltage) were optimized for each pesticide during infusion (5 μL  
26 min<sup>-1</sup>) of individual pesticide solution (1-5 μg mL<sup>-1</sup>) into the mobile phase flow (A:B 50:50,  
27 (v/v); 0.3 mL min<sup>-1</sup>). All MS experiments were realized employing following parameters:  
28 capillary voltage 3.5 kV, extractor voltage 4 V, source temperature 120°C, desolvation  
29 temperature 250°C, cone gas flow 100 L h<sup>-1</sup> and desolvation gas flow 700 L h<sup>-1</sup> (both gases  
30 were nitrogen). Argon was used as a collision gas (3.3 10<sup>-3</sup> mbar). Tuned and optimized  
31 MS/MS transitions as well as specific cone voltages and collision energies are summarized in  
32 Table 1. Analytes were divided into MRM segments based on their elution characteristics  
33 (Table 1). In each of these segments selected MS/MS transitions were monitored at the same  
34 dwell time 5 ms, inter-channel and inter-scan delays of 10 ms for all transitions. Generated  
35 experimental data were processed using MassLynx software version 4.0 Service Pack 4,  
36 Software Change Note #462 (Waters, USA).  
37  
38  
39  
40  
41  
42  
43  
44  
45  
46  
47  
48  
49  
50  
51

52 [Insert Table 1 about here]  
53  
54

### 55 ***Method performance***

56 The analytes mixture in pure solvent was repeatedly analyzed within the  
57 optimization/development of UPLC-MS/MS to tune chromatographic and MS/MS  
58 parameters. Repeatability and LODs of UPLC-MS/MS method were obtained on the basis of  
59  
60



1  
2  
3 data generated through six replicate sequences comprising set of matrix-matched standards  
4 consisting of 10 purified apple extracts spiked by target analytes mixture at levels: 250; 150;  
5 50; 20; 10; 5; 2; 1; 0.5 and 0.25  $\mu\text{g kg}^{-1}$ , respectively. Prior to running the sequences, the  
6 electrospray (ESI) source chamber was cleaned and then twelve repeated injections of blank  
7 sample extract were performed to minimize the changes of analytes responses within the  
8 initial injections of test samples. The LOD for each pesticide was estimated as an analyte  
9 concentration, at which signal to noise ratio value for primary MS/MS at least 3 ( $S/N \geq 3$ ) was  
10 obtained within all six sequences (described above). For S/N estimation Peak-to-peak (PtP)  
11 strategy integrated in the MassLynx software was employed. The limit of quantitation (LOQ),  
12 (fixed as lowest calibration level - LCL) was defined as an analyte concentration at which  
13 following requirements were met: (i) primary MS/MS transition -  $S/N \geq 5$  and (ii) secondary  
14 MS/MS transition -  $S/N \geq 3$  obtained in all six sequences. Within the study also the matrix  
15 effect for each analyte was estimated. The calculation resulted from replicated analyses of six  
16 sequences comprising: (i) set of spiked purified apple extracts  $M_1$ - $M_3$  (prepared as described  
17 in chapter 3.3) at levels 10, 20 and 50  $\mu\text{g kg}^{-1}$  (ii) standards in pure solvent ( $S_1$ - $S_3$ ) at levels:  
18 10, 20 and 50  $\text{ng mL}^{-1}$  (prepared as described in section "Chemicals and material") and (iii)  
19 blank apple extracts (B); (prepared as described in section "Sample preparation"). The  
20 injection order within the sequence for ME investigation is shown in Table 2. The blank apple  
21 extract was analyzed to check the cross-contamination within the sample injections. The value  
22 of matrix effect was calculated as a ratio of average area of matrix-matched standards and  
23 average area of solvent standards for each analyte.  
24  
25  
26  
27  
28  
29  
30  
31  
32  
33  
34  
35  
36  
37  
38  
39  
40

41  
42 [Insert Table 2 about here]  
43  
44

## 45 **Results and discussion**

### 46 ***Sample preparation***

47  
48 Depending on a sample preparation strategy, various co-extracts are contained in analyzed  
49 samples (Díez et al. 2006, Hercegová et al. 2004, Zrostlíková et al. 2003, Alder et al.2004).  
50 Their amount and character may influence, in a different extent, the overall performance of  
51 respective analytical method. From a wide range of isolation/purification approaches  
52 conceivable in pesticide residue analysis (e.g. described by Fernández-Alba 2005, Lehotay et  
53 al. a. 2005, Janson et al. 2004, Leandro et al. 2006) recently introduced QuEChERS strategy  
54 (Anastassiades et al. 2003, Lehotay et al. b. 2005) was chosen for our study. As demonstrated  
55  
56  
57  
58  
59  
60

1  
2  
3 within international collaborative studies (Lehotay et al. 2005, Díez et al. 2006) for low fat  
4 matrices such as fruits/vegetables, QuEChERS currently represents the most challenging pre-  
5 analytical option for analysis of a wide range of pesticides representing various polarity  
6 classes. Based on the list of target analytes involved in these studies, representatives of  
7 various pesticide classes were selected for our experiments. Another option we had to decide  
8 was the choice of optimal solvent strength for introduction of QuEChERS extract (acetonitrile  
9 solution) onto UPLC column. Theoretically, dilution of sample by water should be carried out  
10 to obtain a solvent strength similar to initial mobile phase composition (in particular case A:B  
11 8:2, v/v). Such approach was employed in most of LC-MS based studies employing various  
12 “classic” sample preparation techniques (e.g. Hertherton 2004, Hernández et al. 2006,  
13 Hancock et al. 2004, Klein and Alder 2003, Alder et al. 2004). However, addition of water to  
14 QuEChERS acetonitrile extract may result in the matrix precipitation and, consequently, in  
15 some loss of target analytes. With regards to these problems, undiluted sample was injected.  
16 Thanks to its low volume (5  $\mu$ l), a distortion of early eluting peaks was negligible. Although  
17 some sensitivity was sacrificed by reduction of sample equivalent to 5 mg, the LODs were  
18 still low enough, to enable reliable control of “baby food limit” (10  $\mu$ g kg<sup>-1</sup>) for most of  
19 analytes. Moreover, decreasing of sample load also increases column life-time and reduces  
20 the demands for MS source maintenance.  
21  
22  
23  
24  
25  
26  
27  
28  
29  
30  
31  
32  
33  
34  
35  
36

## 37 UPLC-MS/MS

### 38 *MS/MS parameters*

39  
40 With regards to the principles of confirmation defined in recent Commission document No.  
41 SANCO/10232/2006, overwhelming evidence that sample actually contains particular  
42 pesticide, i.e. proof of its identity, has to be provided by respective analytical procedure. To  
43 meet this requirement and avoid the need of positive samples re-analysis, we aimed to  
44 incorporate two MS/MS transitions to get a required specificity of detection process for all  
45 analytes. Contrary to the majority of existing multiresidue LC-MS/MS methods in which (as a  
46 compromise enabling to achieve low enough LODs for a wide range of analytes) only one  
47 MS/MS transitions was monitored, two selective transitions with the highest abundance were  
48 selected for detection in our study. The confirmation of identity was based on the ion ratio  
49 statistics for two MS/MS transitions monitored, as recommended by Commission document  
50 No. SANCO/10232/2006 and as usually applied in the analysis of veterinary drugs residues  
51 (Commission Decision of 12 August 2002 implementing Council Directive 96/23/EC  
52  
53  
54  
55  
56  
57  
58  
59  
60

concerning the performance of analytical methods and the interpretation of results (2002/657/EC). This strategy has been demonstrated as suitable for analysis of residues in plant materials by other authors (Leandro et al. 2006, Hertherton et al. 2004, Soler 2006).

Analytes detection and fragmentation parameters (cone voltages and collision energies) were optimized, under ESI+ conditions by infusing a standard solution by a syringe pump into the mobile phase. Alike in similar studies (Hertherton et al. 2004, Hernández et al. 2006, Leandro et al. 2006), maximum permitted tolerances for relative ion ratios (Commission document SANCO/10232/2006) were considered for confirmation in presented procedure employing MRM mode. Phorate was only pesticide for which secondary (qualifying) MS/MS transition was not established. Confirmation of this compound, based on ion ratio, was therefore impossible.

### MRM optimization

In theory, the replacement of conventional HPLC column (particles in the range 3-5  $\mu\text{m}$ ) with novel UPLC columns with sorbent consisting of small particles (2  $\mu\text{m}$  and less) results in reduced heights of theoretical plate (HETP) and increased peak capacity (Leandro et al. 2006, Kovalczuk et al. 2006). As far as narrow peaks such as those generated in UPLC analysis are to be accurately integrated, MS scanning frequency has to be adjusted properly. For meeting the sufficient data density, i.e. at least 10 data points (Hill et al. 2002) across the peak, even for analytes at the lowest calibration levels, the dwell time period was set down to 5 ms, what is a minimal setting attainable by Quattro Premier XE instrument, inter-scan and inter-channel delays were then 10 ms (under this setting the density for peaks at 150  $\mu\text{g kg}^{-1}$  was rather excessive, 20-30). With regard to high number of analytes eluted within a short time, and considering strong requirement for low LODs in pesticide residue analysis, several time windows, within which only a limited number of MS/MS transitions is monitored, have to be established across the chromatogram. Unfortunately, under real-life conditions, slight fluctuation of analytes retention times may occur, namely during analysis of large series of samples. Therefore, to avoid running of analytes out of their elution slot, some overlap of these time windows has to be established for reliable acquisition of respective data. Increased number of MS/MS transitions is then monitored in the area of overlap and, consequently, acquisition frequency may significantly decrease. As far as acquisition of data points for particular analyte occurs under largely differing scanning speeds, as shown for aldicarb in Fig. 1A, poor repeatability of generated data (relative standard deviation (RSD) 23% in particular case) is typically encountered.

1  
2  
3  
4  
5 [Insert Figure 1 about here]  
6  
7

8  
9 One of conceivable strategies to minimize the above unfavourable effects is illustrated in  
10 Fig. 1B. In this case, some peaks in chromatogram are eluted within the overlap of adjacent  
11 windows, in which, both the scanning speed and dwell time are equal or very similar.  
12 Repeatability of areas of peaks eluted at the segment “borderline” is fairly improved due to  
13 only small differences in acquisition set-up across the analyte elution band. Using this  
14 approach repeatability of aldicarb measurement (expressed as RSD) was as low as 6%. It  
15 should be noted, however, that optimization of windows setting is a very demanding task and  
16 any the expanding method scope (adding of a new analyte), is rather complicated.

17  
18 In Fig. 1C, further improved, obviously simpler approach is presented. Contrary to the  
19 previous strategy, elimination of problems associated with the overlap of time windows  
20 characterized by different scanning conditions is achieved by separating analytes into many  
21 time segments within which only a small number of MS/MS transitions is monitored. This set-  
22 up allows a large flexibility in the method optimization, since modification of windows  
23 overlap (when needed), does not result in significant changes in scanning frequencies. In  
24 addition, for some peaks a special MRM segment including respective two characteristics  
25 MS/MS transitions can be easily added without a significant change of the scanning  
26 frequency. Example in Fig. 1C shows flexible settings of “tailor-made” windows for aldicarb.  
27 The later strategy was employed in comprehensive optimization of the current UPLC-MS/MS  
28 procedure.

### 29 30 31 32 33 34 35 36 37 38 39 40 41 42 43 **Method performance characteristics**

44  
45 Considering a large number of registered pesticide/fruit combinations involved in various  
46 surveillance/compliance studies, it was obviously impossible to carry out the validation of  
47 UPLC-MS/MS procedure for all of them. On this account, generic approach was adopted for  
48 set-up of this study. The choice of test matrices was based on assumptions on comparable  
49 nature of matrix effects occurring in LC-MS/MS analysis of commodities characterized by  
50 similar composition (Commission document No. SANCO/10232/2006, Hercegová et al.  
51 2004), i.e. similar nature of co-extracts interfering with ionization process. In particular case,  
52 apples were selected for our study as a representative of high moisture low fat commodity  
53 category. The applicability of a new method in the final phase of study was demonstrated on  
54 analyses of apple-based fruit baby foods.  
55  
56  
57  
58  
59  
60

1  
2  
3 For most of residues, optimized method allowed to obtain LODs and LOQs (lower than 10  
4  $\mu\text{g kg}^{-1}$ , see Table 3) what enables to use it also for control of uniform baby food MRL set at  
5 this level. For two “priority” pesticides specified in EU Commission Directive 2003/13/EC  
6 included into our study (oxydemeton methyl and demeton-S-methyl sulfone) LODs 0.5  
7  $\mu\text{g kg}^{-1}$  were obtained, what allows their reliable control of even lower level. (MRL for  
8 demeton-S-methyl is 6  $\mu\text{g kg}^{-1}$ , expressed as sum of demeton-S-methyl, oxydemeton-  
9 methyl and demeton -S-methyl sulfone). The calibration curves were realized by six  
10 calibration sets of spiked QuEChERS apple extracts over a wide concentration range 0.25-250  
11  $\text{ng mL}^{-1}$  (equivalent to contamination level 0.25-250  $\mu\text{g kg}^{-1}$ , prepared as described in 3.4).  
12 The correlation coefficient ( $R^2$ ) was calculated by MassLynx software for the concentration  
13 range LOQ-250  $\mu\text{g kg}^{-1}$ , (corresponds to LOQ-250  $\text{ng mL}^{-1}$ ). For the majority of tested  
14 pesticides the calibration curves were linear (correlation coefficient  $R^2 > 0.98$ ) over the tested  
15 range. As shown in Table 3, for acetamiprid, carbendazim, carbofuran, pirimicarb and  
16 thiacloprid, excellent linearity was achieved over the whole calibration range (0.25-250  $\mu\text{g kg}^{-1}$ ).  
17  
18  
19  
20  
21  
22  
23  
24  
25  
26  
27  
28  
29

30 It should be noted that the applicability of QuEChERS pre-analytical procedure for isolation  
31 of a wide range of pesticides from apples and similar matrices was reported in earlier  
32 published studies (Anastassiades et al. 2003, Lehotay et al. a,b 2005, Díez et al. 2006) and,  
33 therefore, recoveries of target analytes were not examined in our experiments. The current  
34 study was mainly focused on critical assessment of performance characteristics of UPLC-  
35 MS/MS determinative step, and on this account, only spiked extracts prepared from blank  
36 apples were analyzed. Regarding random errors of six repeated injections (as described in  
37 3.4), relatively low RSDs 6 % in average were found for all the tested pesticides at  
38 concentration level 10  $\mu\text{g kg}^{-1}$ . For only few analytes with LOQ  $> 10 \mu\text{g kg}^{-1}$  the repeatability  
39 was calculated at their LOQ (see Table 3). Dodine was the only pesticide for which the RSD  
40 exceeded 20% (see Table 3). The uncertainty of measurement of this troublesome analyte (see  
41 Fig. 2), as documented in our long-term records, increases with growing number of samples  
42 analyzed on Acquity BEH C18 separation column. Although column with different stationary  
43 phase (Discovery C<sub>18</sub>) was used in our routine multiresidue HPLC-MS/MS method, similar  
44 problems were encountered.  
45  
46  
47  
48  
49  
50  
51  
52  
53  
54  
55  
56  
57

58 [Insert Table 3 about here], [Insert Figure 2 about here]  
59  
60

1  
2  
3 The suppression/enhancement of individual analytes signal measured in the presence of  
4 matrix components, i.e. matrix effect, was estimated on the basis of comparison with pure  
5 solvent standard. Within this study, matrix effects ranging from 55 to 160% were observed,  
6  
7 with the highest enhancement of response obtained for azoxystrobin, and the most intensive  
8 signal suppression found for spiroxamine. Although for most of analytes matrix effects were  
9 in acceptable range 80-120%, the matrix-matched standards were used for quantification  
10 thorough the study to achieve good accuracy of generated data.

11  
12 The possibility to obtain significant reduction of analysis time by the use of UPLC-MS/MS  
13 system, even in case of such complex sample as multiple residues in plant matrices, was  
14 documented. The UPLC-MS/MS examination of apple extract was completed within 8 min  
15 (see Fig. 3). Compared to similar procedures employing conventional HPLC-MS/MS systems  
16 sample throughput was approx. 3-4 times higher, as summarized in Fig. 4.

17  
18 The time necessary for re-equilibration the separation column was set to 2 min, and as  
19 documented by negligible RSDs of retention times (0.11-0.36%), this time was sufficient  
20 enough for their good repeatability.  
21  
22

23  
24 [Insert Figure 3 and 4 about here]  
25  
26  
27  
28  
29  
30  
31

## 32 33 34 35 36 **Conclusions**

37  
38 The UPLC Acquity separation system (Waters) coupled with Premier Quattro XE (Waters)  
39 tandem quadrupole mass spectrometric detector, used for analysis of multiple pesticide  
40 residues, enabled an overall improvement of method performance characteristics when  
41 QUEChERS apple extract was injected:  
42  
43  
44

- 45  
46  
47 • Due to the reduced band broadening on a high resolution UPLC column, narrower  
48 analyte peaks, hence increased signal to noise ratios, were obtained. This resulted in  
49 achieving limits of quantification (LOQs) for most pesticides fairly below  $10 \mu\text{g kg}^{-1}$ .  
50 Under these conditions, not only MRLs established by EU regulation for common fruit  
51 commodities, but also uniform baby food limit ( $10 \mu\text{g kg}^{-1}$ ) can be reliably controlled.  
52  
53
- 54 • Thanks to the high detection sensitivity, simultaneous acquisition of two characteristic  
55 MS/MS transitions was possible for all the target analytes. In this way, contrary to  
56 most of currently existing LC-MS based methods, on-line confirmation of residues  
57  
58  
59  
60



1  
2  
3 identity was obtained for any positive signal. Confirmation was also supported by  
4 highly stable retention times, even within large series of injected samples.  
5  
6

- 7 • Distinct improvement of respectabilities of peak areas measurement was obtained by  
8 increasing the number of (partly overlapping) time windows adjusted throughout the  
9 chromatographic run, and, at the same time, decreasing the number of MS/MS  
10 transitions set within each of them. Large changes in acquisition frequencies across the  
11 eluting analyte band that may cause unacceptable variations in recorded signals (too  
12 high standard deviations, RSDs); can be eliminated by this data acquisition strategy.  
13  
14 • Matrix effects (peak suppression/enhancement) were not too intensive (only small  
15 sample equivalent inject), generally in the range 80 - 120%. In spite of that the use of  
16 matrix-matched standards for accurate quantification is recommended.  
17  
18 • Distinctly reduced analysis time (10 min in particular case) attainable thanks to  
19 possibility to operate UPLC column at high mobile phase flow rates without any loss  
20 of resolution enabled significantly increased sample throughput.  
21  
22  
23  
24  
25  
26  
27  
28  
29

30 In conclusion, the newly developed procedure fully meets the analytical quality control  
31 (AQC) requirements to support the validity of data used for checking compliance with  
32 maximum residue limits (MRLs), enforcement actions, or assessment of consumer exposure  
33 to pesticides as laid down in Commission Document N° SANCO/10476/2003.  
34  
35  
36  
37  
38  
39

#### 40 **Acknowledgement**

41 This study was a part of research project MSM 6046137505 granted by Ministry of  
42 Education, Youth and Sports of the Czech Republic. UPLC system Acquity loan, before its  
43 purchase is acknowledged to WATERS Gesellschaft m.b.H, Prague, Czech Republic.  
44  
45  
46  
47  
48  
49

#### 50 **References**

- 51 Alder L., Luderlitz S., Lindtner K., Stan H-J. 2004. The ECHO technique – the more effective  
52 way of data evaluation in liquid chromatography–tandem mass spectrometry analysis.  
53 Journal of Chromatography A 1058: 67-79  
54  
55 Anastassiades M., Lehotay S.J., Štajbaber D., Schenck F. 2003. Fast and easy multiresidue  
56 method employing acetonitrile extraction/partitioning and “dispersive solid-phase  
57  
58  
59  
60



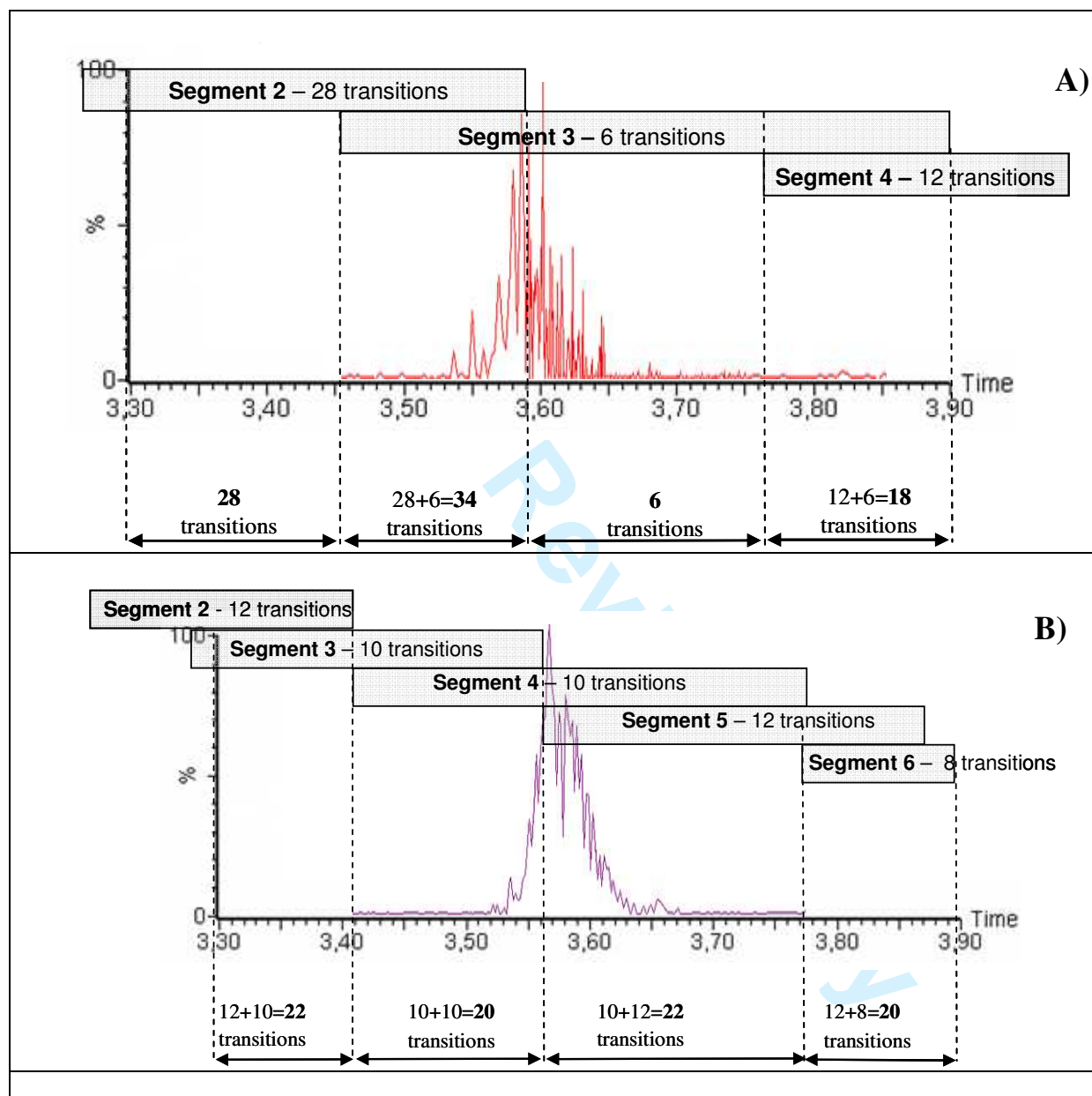
- 1  
2  
3 extraction” for the determination of pesticide residues in produce. *Journal of AOAC*  
4  
5 *International* 86: 412-431  
6  
7 Commission Directive 2003/13/EC of 10 February 2003 amending Directive 96/25/EC on  
8  
9 processed cereal-based foods and baby foods for infants and young children, *Official*  
10  
11 *Journal* L41/33  
12  
13 Díez C., Traag W.A., Zommer P., Marinero P., Atienza J. 2006. Comparison of an acetonitrile  
14  
15 extraction/partitioning and “dispersive solid-phase extraction” method with classical  
16  
17 multi-residue methods for the extraction of herbicide residues in barley samples.  
18  
19 *Journal of Chromatography A* 1131:11-23  
20  
21 European Commission, directorate General Health and Consumer Protection, Commission  
22  
23 document SANCO/10232/2006, Quality Control Procedures for Pesticide Residue  
24  
25 Analysis, 2006. Available from:  
26  
27 [http://ec.europa.eu/food/plant/protection/resources/qualcontrol\\_en.pdf](http://ec.europa.eu/food/plant/protection/resources/qualcontrol_en.pdf). Accessed 2007  
28  
29 [February 20](#).  
30  
31 Fernández M., Picó Y., Manes J. 2000. Determination of carbamate residues in fruits and  
32  
33 vegetables by matrix solid-phase dispersion and liquid chromatography–mass  
34  
35 spectrometry. *Journal of Chromatography A* 871:43-56  
36  
37 Fernández-Alba A.R. (ed) 2005. *Vol. XLIII – Chromatographic-Mass Spectrometric Food*  
38  
39 *Analysis for Trace Determination of Pesticide Residue*. In: *Comprehensive Analytical*  
40  
41 *Chemistry s*, Elsevier, Amsterdam  
42  
43 Hancock P., Kearney G., Newton A., Alder L., Klein J. 2004. An enhanced LC/MS/MS  
44  
45 method for the determination of 81 pesticide residues in fruit and vegetables using the  
46  
47 Quattro Premier Mass Spectrometer. Waters Corporation (USA) Application Note  
48  
49 Database [Internet]. 2004 – [cited 2007 Feb 20]. Available from:  
50  
51 <http://www.waters.com/WATERSDIVISION/pdfs/720000840EN.pdf>  
52  
53 Hercegová A., Dömötörövá M, Matisová E, Kirchner M., Otrekal R., Štefuca V. 2005. Fast  
54  
55 gas chromatography with solid phase extraction clean-up for ultratrace analysis of  
56  
57 pesticide residues in baby food. *Journal of Chromatography A* 1084: 46-53.  
58  
59 Hernández F, Pozo O.J., Sanco J.V., Biljsma L., Barreda M., Pitarch E. 2006. Multiresidue  
60  
61 liquid chromatography tandem mass spectrometry determination of 52 non gas  
62  
63 chromatography-amenable pesticides and metabolites in different food commodities.  
64  
65 *Journal of Chromatography A* 1109: 242-252

- 1  
2  
3 Hertherton C.L., Sykes, M.D., Fussell R.J., Goodall D.M. 2004. A multi-residue screening  
4 method for the determination of 73 pesticides and metabolites in fruit and vegetables  
5 using high-performance liquid chromatography/tandem mass spectrometry. *Rapid*  
6 *Communications in Mass Spectrometry* 18: 2443-2450  
7  
8  
9  
10 Hill H.M., Smeraglia J, Brodie R.R., Smith G.T, 2004. Where do you need draw the line?  
11 Points consider when Implementing the FDA Method Validation Guidance on  
12 Qualifying Chromatographic Peaks, *Chromatographia Suppl.* 55: S-79-S-81  
13  
14 <http://www.quechers.com> [internet]. Accessed 2007 Feb 20.  
15  
16  
17 Janson C., Pihlström T., Österdahl B., Markides K.E. 2004. A new multi-residue method for  
18 analysis of pesticide residues in fruit and vegetables using liquid chromatography with  
19 tandem mass spectrometric detection. *Journal of Chromatography A* 1023: 93-104  
20  
21 Klein J, Alder L. 2003. Applicability of gradient liquid chromatography with tandem mass  
22 spectrometry to simultaneous screening for about 100 pesticides in crops. *Journal of*  
23 *AOAC International* 86: 1015-1037  
24  
25  
26  
27 Kovalczuk T., Jech M., Poustka J, Hajšlová J. 2006. Ultra-performance liquid  
28 chromatography–tandem mass spectrometry: A novel challenge in multiresidue  
29 pesticide analysis in food. *Analytica Chimica Acta* 577:8  
30  
31  
32  
33 Leandro C.C, Hancock P, Fussell, R.J., Keely B.J. 2006. Comparison of ultra-performance  
34 liquid chromatography and high-performance liquid chromatography for the  
35 determination of priority pesticides in baby foods by tandem quadrupole mass  
36 spectrometry. *Journal of Chromatography A*, 1103: 94-101.  
37  
38  
39  
40 Lehotay S. (a) de Kok A., Hiemstra M., van Bodegraven P. 2005. Validation of fast and easy  
41 method for the determination of residues from 229 pesticides in fruits and vegetables  
42 using gas and liquid chromatography and mass spectrometry. *Journal of AOAC*  
43 *International* 88: 595-614  
44  
45  
46  
47 Lehotay S. (b), Maštovská K., Lightfield A. 2005. Use of buffering and other means to  
48 improve results of problematic pesticides in a fast and easy method for residue analysis  
49 of fruits and vegetables. *Journal of AOAC International* 88: 615-629  
50  
51  
52  
53 Mezcua M., Agüera A., Lliberia J.L., Cortés M.A, Bagó B., Fernández-Alba.  
54 2006. Application of ultra performance liquid chromatography–tandem  
55 mass spectrometry to the analysis of priority pesticides in groundwater .  
56  
57  
58  
59 *Journal of Chromatography A* 1109:222-227  
60

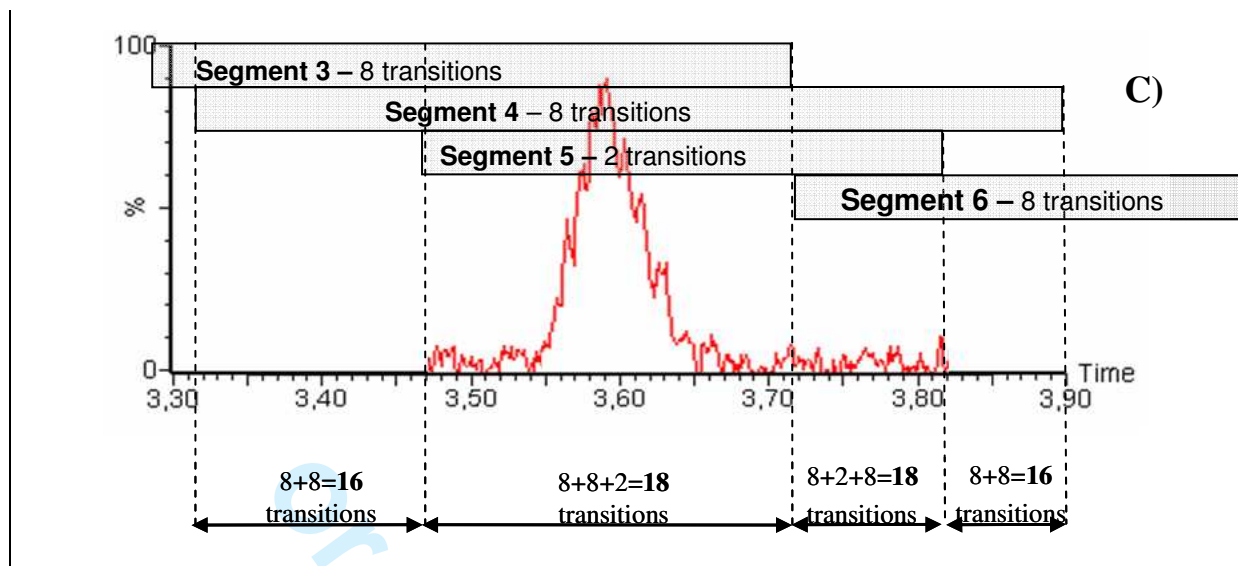
- 1  
2  
3  
4  
5  
6  
7  
8  
9  
10  
11  
12  
13  
14  
15  
16  
17  
18  
19  
20  
21  
22  
23  
24  
25  
26  
27  
28  
29  
30  
31  
32  
33  
34  
35  
36  
37  
38  
39  
40  
41  
42  
43  
44  
45  
46  
47  
48  
49  
50  
51  
52  
53  
54  
55  
56  
57  
58  
59  
60
- Orteli D., Edder P., Corvi C. 2004. Multiresidue analysis of 74 pesticides in fruits and vegetables by liquid chromatography–electrospray–tandem mass spectrometry. *Analytica Chimica Acta* 520: 33-45
- Soler C., Hamilton B., Furey A., James K.J., Mañes J., Pocó Y. 2006, Optimization of LC-MS/MS using triple quadrupole mass analyzer for simultaneous analysis of carbosulfan and its main metabolites in oranges. *Analytica Chimica Acta* 571: 1-11
- Tomlin C.D.S. (ed) 2002. In: *The e-Pesticide Manual*, BCPC, (12<sup>th</sup> edn). Version 2.2., 2002-2003
- Zrostlíková J., Hajšlová J., Kovalczuk T., Štěpán R., Poustka J. 2003. Determination of seventeen polar/thermolabile pesticides in apples and apricots by liquid chromatography mass spectrometry. *Journal of AOAC International* 86: 612-622

1  
2  
3  
4  
5  
6  
7  
8  
9  
10  
11  
12  
13  
14  
15  
16  
17  
18  
19  
20  
21  
22  
23  
24  
25  
26  
27  
28  
29  
30  
31  
32  
33  
34  
35  
36  
37  
38  
39  
40  
41  
42  
43  
44  
45  
46  
47  
48  
49  
50  
51  
52  
53  
54  
55  
56  
57  
58  
59  
60

**Figure 1: The impact of data acquisition setting in UPLC-MS/MS (changes of scanning frequency) on recording of analyte elution profile; aldicarb was shown as an example:** In each segment a certain number of MS/MS transitions was monitored according to particular MRM method. The total number of MS/MS transitions monitored in each moment, expressed as the sum of all overlapped segments is shown below each chromatogram. The phenomenon of poor repeatability based on largely changed scanning frequencies is demonstrated on peak of aldicarb. For details see paragraph “MRM optimization”.

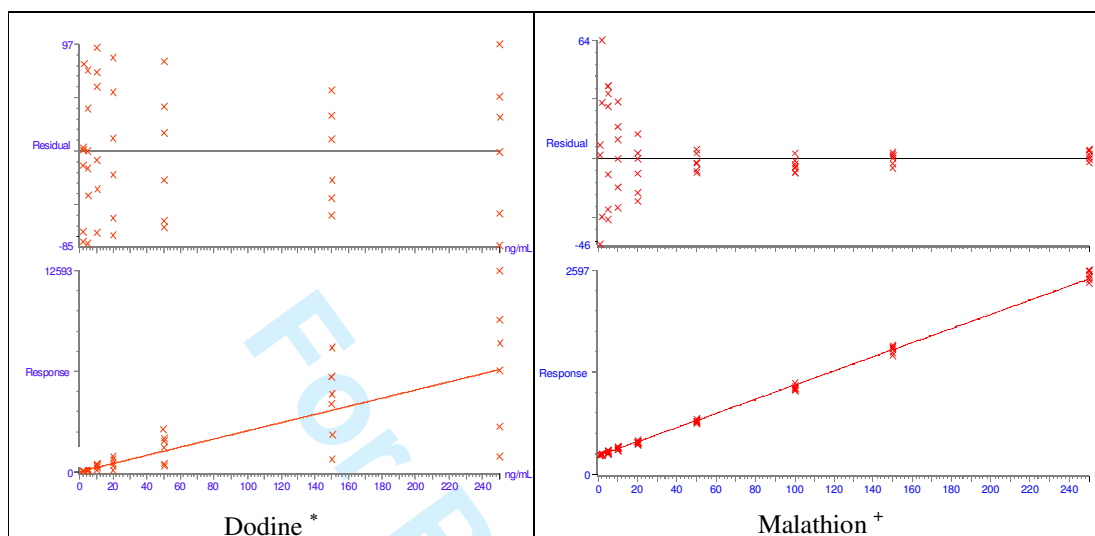


1  
2  
3  
4  
5  
6  
7  
8  
9  
10  
11  
12  
13  
14  
15  
16  
17  
18  
19  
20  
21  
22  
23  
24  
25  
26  
27  
28  
29  
30  
31  
32  
33  
34  
35  
36  
37  
38  
39  
40  
41  
42  
43  
44  
45  
46  
47  
48  
49  
50  
51  
52  
53  
54  
55  
56  
57  
58  
59  
60



Deleted: 4

Figure 2: Calibration curves.



Rather poor repeatability of dodine over the whole calibration range is compared with calibration curve of malathion. In case of malathion as well as most pesticides calibration curves were linear ( $R^2 > 0.98$ ). Spiked apple extracts were used for calibration within one sequence containing six calibration sets (each had 10 points ranging from 0.25-250  $\mu\text{g kg}^{-1}$ ).

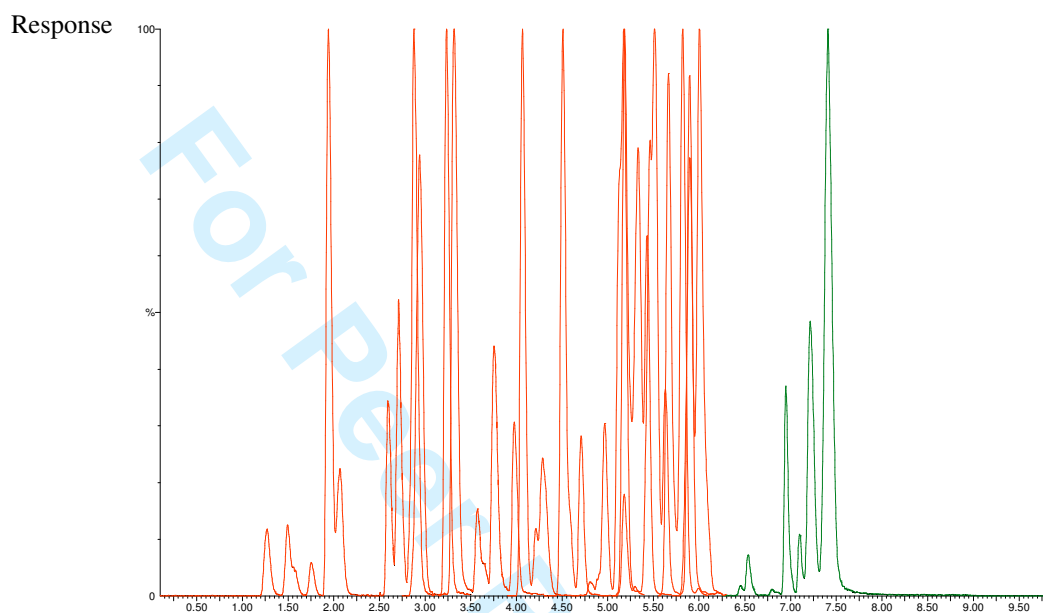
\* – calibration range 5-250  $\mu\text{g kg}^{-1}$  (equivalent to 5-250  $\text{ng mL}^{-1}$ )

+ – calibration range 1-250  $\mu\text{g kg}^{-1}$  (equivalent to 1-250  $\text{ng mL}^{-1}$ )

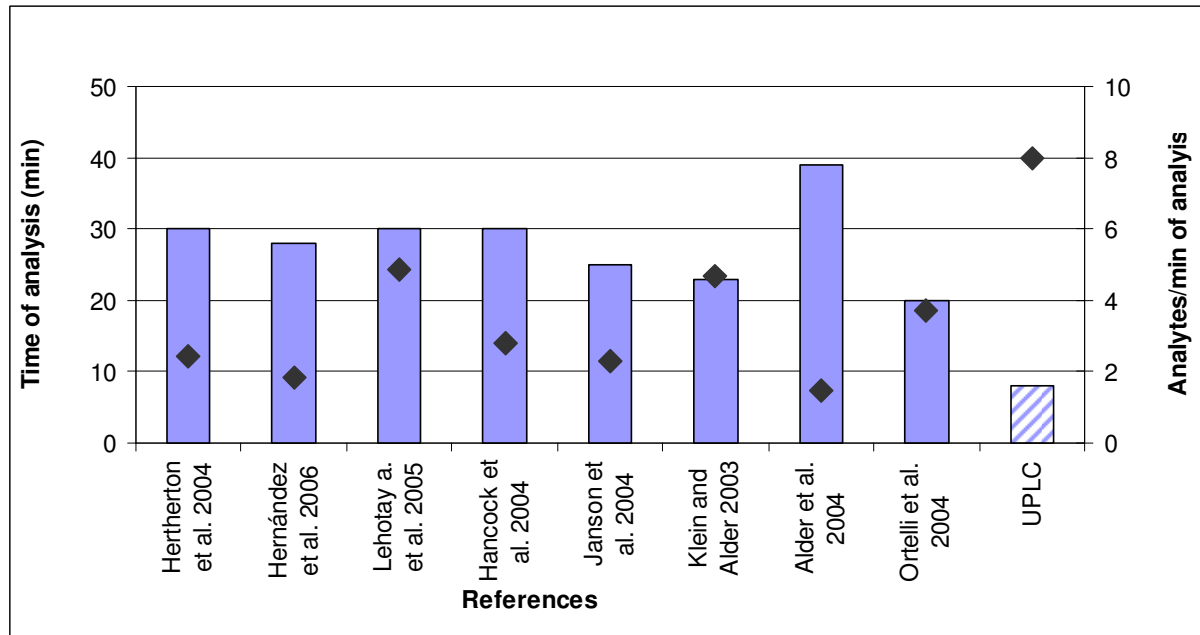
Deleted: 5-250  $\text{ng mL}^{-1}$ Deleted: 5-250  $\mu\text{g kg}^{-1}$ . Within one sequence six calibration sets (each had 10 points ranging from 0.25-250  $\text{ng mL}^{-1}$ ).Deleted:  $\text{ng mL}^{-1}$ Deleted:  $\mu\text{g kg}^{-1}$ 

Deleted: .

**Figure 3:** Combined UPLC-MS/MS MRM chromatogram based on the quantifying MS/MS transitions (Table 1) of spiked apple extracts at  $0.05 \text{ mg kg}^{-1}$ .





**Figure 4:** Comparison of different LC-MS/MS methods

**Table 1:** Selected chromatographic and MS/MS (in ESI, positive mode) parameters for analysis of 64 target pesticides

Pesticide	RT (min)	RSD RT (%)	MS/MS transitions (m/z)	Cone voltage (V)	Collision energy (eV)	MRM segment
1 Methamidophos	1.27	0.34	<b>142</b> > <b>94</b>	40	13	
			142 > 125	40	13	
2 Omethoate	1.50	0.27	<b>214</b> > <b>183</b>	20	22	
			214 > 125	20	11	
3 Aldicarb sulfoxide	1.59	0.31	<b>224</b> > <b>150</b>	22	16	
			224 > 187	22	8	
4 Aldicarb sulfone	1.76	0.35	<b>240</b> > <b>223</b>	33	8	1
			240 > 148	33	13	
5 Oxydemeton methyl	1.94	0.28	<b>247</b> > <b>169</b>	35	15	
			247 > 105	35	15	
6 Methomyl	2.05	0.35	<b>163</b> > <b>88</b>	20	10	
			163 > 106	20	10	
7 Demeton-S-methyl sulfone	2.08	0.27	<b>263</b> > <b>169</b>	40	20	
			263 > 109	40	20	
8 Imidacloprid	2.60	0.30	<b>256</b> > <b>209</b>	29	16	
			256 > 175	29	15	
9 Methiocarb sulfoxide	2.71	0.29	<b>242</b> > <b>185</b>	39	13	
			242 > 170	30	14	
10 Methiocarb sulfone	2.86	0.24	<b>218</b> > <b>122</b>	29	15	2
			218 > 201	29	15	
11 Carbofuran 3-hydroxy	2.89	0.27	<b>238</b> > <b>163</b>	29	14	
			238 > 181	29	14	
12 Bentazone	2.88	0.34	<b>238</b> > <b>135</b>	40	25	
			238 > 137	40	25	
13 Acetamiprid	2.92	0.29	<b>223</b> > <b>126</b>	31	14	
			223 > 56	31	14	
14 Dimethoate	2.95	0.18	<b>230</b> > <b>125</b>	30	30	3
			230 > 79	30	30	
15 Thiacloprid	3.24	0.20	<b>253</b> > <b>126</b>	35	25	
			253 > 186	35	14	

Table 1 (continued)

16	Carbendazim	3.32	0.11	<b>192</b> > <b>160</b>	35	22	4
				192 > 132	35	22	
17	Aldicarb	3.61	0.13	<b>116</b> > <b>89</b>	43	8	5
				116 > 70	43	8	
18	Dichlofluanid	3.66	0.27	<b>201</b> > <b>92</b>	40	30	
				201 > 137	40	30	
19	Thiabendazole	3.76	0.15	<b>202</b> > <b>175</b>	40	25	4
				202 > 131	40	25	
20	Thiophanate-methyl	3.98	0.14	<b>343</b> > <b>151</b>	41	19	
				192 > 160	41	17	
21	Carbofuran	4.07	0.10	<b>222</b> > <b>165</b>	26	12	
				222 > 123	26	22	
22	Malaoxon	4.17	0.09	<b>315</b> > <b>127</b>	30	30	
				315 > 99	30	11	
23	Carbaryl	4.28	0.21	<b>202</b> > <b>145</b>	16	9	6
				202 > 127	16	27	
24	Thiodicarb	4.33	0.17	<b>355</b> > <b>88</b>	30	10	
				355 > 108	30	12	
25	Tolyfluanid	4.42	0.18	<b>347</b> > <b>238</b>	40	15	
				347 > 137	40	15	
26	Phorate sulfoxide	4.50	0.13	<b>277</b> > <b>97</b>	39	13	
				277 > 143	39	27	
27	Pirimicarb	4.51	0.10	<b>239</b> > <b>72</b>	30	20	7
				239 > 182	30	18	
28	Phorate sulfon	4.58	0.21	<b>293</b> > <b>97</b>	37	30	
				293 > 115	37	35	
29	Metalaxyl	4.71	0.12	<b>280</b> > <b>220</b>	23	13	
				280 > 248	23	10	
30	Phorate oxon	4.86	0.22	<b>245</b> > <b>75</b>	30	12	8
				245 > 48	30	25	
31	Triforine	4.81	0.23	<b>390</b> > <b>98</b>	46	28	9
				390 > 215	46	28	
32	Azoxystrobin	4.97	0.17	<b>404</b> > <b>344</b>	25	10	8
				404 > 329	25	10	

Table 1 (continued)

33	Linuron	5.13	0.16	<b>249</b> > <b>160</b>	33	17	8
				249 > 182	33	17	
34	Pyrimethanil	5.18	0.09	<b>200</b> > <b>82</b>	54	24	
				200 > 107	54	24	
35	Azinphos-methyl	4.88	0.30	<b>318</b> > <b>160</b>	25	10	10
				318 > 132	25	10	
36	Methiocarb	5.18	0.08	<b>226</b> > <b>169</b>	26	9	
				226 > 121	26	20	
37	Malathion	5.25	0.36	<b>331</b> > <b>99</b>	50	30	
				331 > 125	50	33	
38	Triadimefon	5.32	0.13	<b>294</b> > <b>69</b>	40	15	
				294 > 197	40	18	
39	Myclobutanil	5.36	0.15	<b>289</b> > <b>70</b>	26	25	11
				289 > 125	25	13	
40	Fenhexamid	5.44	0.13	<b>302</b> > <b>97</b>	40	30	
				302 > 55	40	20	
41	Diphenylamine	5.48	0.17	<b>170</b> > <b>93</b>	36	20	
				170 > 92	36	20	
42	Epoxiconazole	5.53	0.12	<b>330</b> > <b>121</b>	30	19	
				330 > 141	30	19	
43	Flusilazole	5.63	0.14	<b>316</b> > <b>247</b>	25	19	
				316 > 165	25	19	
44	Bentazone-8-hydroxy	5.87	0.16	<b>300</b> > <b>258</b>	35	20	12
				300 > 179	35	20	
45	Cyprodinil	5.90	0.11	<b>226</b> > <b>93</b>	40	35	
				226 > 77	40	28	
46	Triadimenol	5.45	0.18	<b>294</b> > <b>69</b>	40	15	
				294 > 197	35	18	
47	Diflubenzuron	5.66	0.19	<b>311</b> > <b>158</b>	25	10	13
				311 > 141	25	29	
48	Bupirimate	5.67	0.21	<b>317</b> > <b>166</b>	35	25	
				317 > 108	35	25	

Table 1 (continued)

49	Kresoxim methyl	5.75	0.19	<b>314</b> > <b>222</b>	30	9	
				314 > 267	30	14	13
50	Penconazole	5.83	0.11	<b>284</b> > <b>159</b>	35	30	
				284 > 70	35	32	
51	Tebuconazole	5.83	0.16	<b>308</b> > <b>70</b>	34	14	
				308 > 125	34	30	
52	Imazalil	5.86	0.14	<b>297</b> > <b>255</b>	35	20	
				297 > 201	35	20	14
53	Propiconazole	<b>5.90</b>	0.23	<b>342</b> > <b>159</b>	43	25	
				342 > 69	43	20	
54	Triflumuron	5.91	0.10	<b>357</b> > <b>154</b>	29	11	
				357 > 177	29	11	
55	Bitertanol	5.98	0.33	<b>338</b> > <b>269</b>	20	9	
				338 > 99	20	14	
56	Prochloraz	6.00	0.08	<b>376</b> > <b>308</b>	24	11	
				378 > 310	24	11	
57	Phorate	6.02	0.12	<b>261</b> > <b>75</b>	40	11	15
				x x x	x	X	
58	Difenoconazole	6.08	0.26	<b>406</b> > <b>251</b>	50	20	
				406 > 337	50	20	
59	Dodine	6.43	0.69	<b>228</b> > <b>57</b>	45	22	
				228 > 186	45	18	
60	Teflubenzuron	6.46	0.13	<b>381</b> > <b>158</b>	23	13	
				381 > 141	23	13	
61	Flufenoxuron	6.54	0.10	<b>487</b> > <b>467</b>	35	11	
				489 > 469	35	11	
62	Fenazaquin	6.95	0.16	<b>307</b> > <b>53</b>	21	24	16
				307 > 161	21	16	
63	Etofenprox	7.10	0.32	<b>394</b> > <b>177</b>	20	14	
				394 > 135	20	26	
64	Spiroxamin	7.41	0.13	<b>298</b> > <b>101</b>	40	25	
				298 > 144	40	25	

Quantitation MS/MS transitions are highlighted by bold

x – second transition was not established.

Formatted: Justified, Line spacing:  
Double

Deleted: ¶

**Table 2:** Sequence used for estimation of matrix effect values

Injection order	1	2	3	4	5	6	7	8	9	10	11	12
Sample code	S <sub>3</sub>	M <sub>3</sub>	S <sub>3</sub>	B	S <sub>2</sub>	M <sub>2</sub>	S <sub>2</sub>	B	S <sub>1</sub>	M <sub>1</sub>	S <sub>1</sub>	B
Concentration levels ( $\mu\text{g mL}^{-1}$ )	50		-		20		-		10		-	

Deleted:  $\mu\text{g}$ 

For apple extracts (sample B and M) the concentration correspond to  $\mu\text{g kg}^{-1}$  in the sample

*M1-M3* - spiked purified apple extracts; *S1-S3* - standards in pure solvent; *B* - blank apple extracts. For more details see Experimental.

For Peer Review Only

**Table 3**

Performance characteristics obtained by repeated UPLC-MS/MS analyses (n=6) of spiked apple extracts (concentrations of target analytes corresponded to contamination level  $10 \mu\text{g kg}^{-1}$ )

Pesticide	RSD (%)	ME ‡ (%)	LOQ ( $\mu\text{g kg}^{-1}$ ) <sup>+</sup>	(R <sup>2</sup> ) <sup>†</sup>	Ion ratio (quan./qual.)	Ion ratio RSD (%)	Acceptable limit <sup>  </sup>	
							(%)	Met criteria
1 Acetamiprid	2.8	91	0.25	0.99	1.3	11	20	Yes
2 Aldicarb	5.8	101	5	0.99	2.0	18	25	Yes
3 Aldicarb sulfone	5.2	90	5	0.98	1.5	8	20	Yes
4 Aldicarb sulfoxide	3.7	77	5	0.99	6.7	16	30	Yes
5 Azinphos-methyl	6.8	137	5	0.98	1.3	12	20	Yes
6 Azoxystrobin	4.3	167	5	0.99	1.5	3	20	Yes
7 Bentazone	6.2	85	5	0.99	5.8	14	30	Yes
8 Bentazone-8-hydroxy*	9.9	100	20	0.98	1.6	5	20	Yes
9 Bitertanol	5.8	91	5	0.98	1.8	4	20	Yes
10 Bupirimate	4.7	154	1	0.98	1.1	8	20	Yes
11 Carbaryl	2.8	95	1	0.99	2.2	17	25	Yes
12 Carbendazim	1.5	87	0.25	0.98	12.1	18	50	Yes
13 Carbofuran	2.9	93	0.5	0.98	1.2	13	20	Yes
14 Carbofuran 3-hydroxy	5.6	101	2	0.99	3.5	5	25	Yes
15 Cyprodinil	4.1	85	5	0.98	2.6	6	25	Yes
16 Demeton-S-methyl sulfone	4.8	108	1	0.99	1.4	19	20	Yes
17 Dichlofluanid	5.0	84	5	0.98	8.1	15	30	Yes
18 Difenconazole	5.2	124	2	0.98	1.1	14	20	Yes
19 Diflubenzuron	3.0	76	5	0.98	1.1	7	20	Yes
20 Dimethoate	4.3	92	2	0.99	2.4	6	25	Yes
21 Diphenylamine	2.8	83	10	0.99	3.3	14	25	Yes
22 Dodine	21.2	136	5	0.94	5.1	18	30	Yes
23 Epoxiconazole	2.8	85	5	0.98	8.4	16	30	Yes
24 Etofenprox	2.2	82	5	0.98	2.2	5	25	Yes
25 Fenazaquin	4.9	100	5	0.98	6.5	13	30	Yes
26 Fenhexamid	4.4	88	2	0.99	3.0	20	25	Yes
27 Flufenoxuron	3.0	120	5	0.99	14.2	30	50	Yes
28 Flusilazole	2.1	107	5	0.96	1.4	18	20	Yes

Formatted Table



Table 3 (continued)

Pesticide	RSD (%)	ME‡ (%)	LOQ (µg kg <sup>-1</sup> ) <sup>+</sup>	(R <sup>2</sup> ) <sup>†</sup>	Ion ratio (quan./qual.)	Ion ratio RSD (%)	Acceptable limit <sup>‡</sup>	
							(%)	Met criteria
29 Imazalil	3.4	79	5	0.99	1.4	10	20	Yes
30 Imidacloprid	3.7	83	2	0.99	1.5	5	20	Yes
31 Kresoxim methyl	9.7	90	5	0.98	1.2	15	20	Yes
32 Linuron	4.3	85	1	0.98	1.8	3	20	Yes
33 Malaoxon	4.5	116	1	0.99	4.4	14	25	Yes
34 Malathion	5.5	106	1	0.98	3.2	12	25	Yes
35 Metalaxyl	5.9	95	1	0.98	2.3	8	25	Yes
36 Methamidophos	4.4	80	2	0.99	2.5	19	25	Yes
37 Methiocarb	3.4	119	1	0.99	1.5	14	20	Yes
38 Methiocarb sulfone	8.7	92	5	0.99	179	28	50	Yes
39 Methiocarb sulfoxide	9.2	148	5	0.98	2.8	19	25	Yes
40 Methomyl	5.5	77	1	0.99	1.1	17	20	Yes
41 Myclobutanil	2.2	100	1	0.99	2.8	20	25	Yes
42 Omethoate	3.8	96	1	0.99	6.5	15	30	Yes
43 Oxydemeton methyl	4.6	97	1	0.99	3.3	4	25	Yes
44 Penconazole	4.6	85	2	0.99	1.3	10	20	Yes
45 Phorate	6.1	92	5	0.98	x		x	No
46 Phorate oxon*	4.5	103	20	0.98	33.8	20	50	Yes
47 Phorate sulfon	9.9	92	1	0.99	1.9	12	20	Yes
48 Phorate sulfoxide	7.8	93	1	0.99	1.2	15	20	Yes
49 Pirimicarb	4.0	86	0.5	0.99	3.7	17	25	Yes
50 Prochloraz	2.8	85	5	0.98	4.6	5	20	Yes
51 Propiconazole	3.6	93	5	0.98	1.4	14	20	Yes
52 Pyrimethanil	5.3	100	2	0.99	1.1	13	20	Yes
53 Spiroxamin	9.2	55	2	0.98	2.5	5	25	Yes
54 Tebuconazole	4.1	95	2	0.98	5.6	22	30	Yes
55 Teflubenzuron	6.8	87	5	0.98	6.6	12	30	Yes
56 Thiabendazole	3.3	78	1	0.99	6.6	5	20	Yes
57 Thiacloprid	4.2	94	0.5	0.99	1.4	16	50	Yes

Formatted Table

Pesticide	RSD (%)	ME (%)	LOQ ( $\mu\text{g kg}^{-1}$ ) <sup>+</sup>	$R^2$ †	Ion ratio (quan./qual.)	Ion ratio RSD (%)	Acceptable limit <sup>  </sup>	
							(%)	Met criteria
58 Thiodicarb	6.4	129	2	0.99	3.2	18	25	Yes
59 Thiophanate-methyl	6.8	104	1	0.99	9.6	19	30	Yes
60 Tolyfluanid	12.5	102	2	0.71	1.2	11	20	Yes
61 Triadimefon	6.0	78	2	0.99	1.6	8	20	Yes
62 Triadimenol	5.4	108	2	0.99	8.7	4	30	Yes
63 Triflumuron	4.9	86	5	0.99	1.9	6	20	Yes
64 Triforine*	9.5	96	20	0.98	18.1	33	50	Yes

Formatted Table

Deleted: 1

\* - repeatability was calculated on LOQ

† - Matrix effect calculated as described in 3.4.

§ - Correlation coefficient calculated for calibration range LOQ-250  $\mu\text{g kg}^{-1}$

x - Qualifying MS/MS transitions was not established

+ -  $\mu\text{g kg}^{-1}$  correspond to  $\text{ng mL}^{-1}$

|| Specified in Commission document No. SANCO/10232/2006