



HAL
open science

Toxicology of yessotoxin: an update

Aurelia Tubaro, Elena Bandi, Silvio Sosa, Maria Rosa Soranzo, Anna Giangaspero, Valeria de Ninis, Takeshi Yasumoto, Paola Lorenzon

► To cite this version:

Aurelia Tubaro, Elena Bandi, Silvio Sosa, Maria Rosa Soranzo, Anna Giangaspero, et al.. Toxicology of yessotoxin: an update. *Food Additives and Contaminants*, 2008, 25 (09), pp.1095-1100. 10.1080/02652030802130017 . hal-00577382

HAL Id: hal-00577382

<https://hal.science/hal-00577382>

Submitted on 17 Mar 2011

HAL is a multi-disciplinary open access archive for the deposit and dissemination of scientific research documents, whether they are published or not. The documents may come from teaching and research institutions in France or abroad, or from public or private research centers.

L'archive ouverte pluridisciplinaire **HAL**, est destinée au dépôt et à la diffusion de documents scientifiques de niveau recherche, publiés ou non, émanant des établissements d'enseignement et de recherche français ou étrangers, des laboratoires publics ou privés.



Toxicology of yessotoxin: an update

Journal:	<i>Food Additives and Contaminants</i>
Manuscript ID:	TFAC-2007-031.R1
Manuscript Type:	Special Issue
Date Submitted by the Author:	24-Jan-2008
Complete List of Authors:	Tubaro, Aurelia; University of Trieste, Department of Materials and Natural Resources Bandi, Elena; University of Trieste, Department of Physiology and Pathology Sosa, Silvio; University of Trieste, Department of Materials and natural Resources Soranzo, Maria Rosa; University of Trieste, Department of Physiology and Pathology Giangaspero, Anna; University of Trieste, Department of Materials and Natural Resources De Ninis, Valeria; University of Trieste, Department of Materials and Natural Resources Yasumoto, Takeshi; Japan Food Research Laboratory, Tama Laboratory Lorenzon, Paola; University of Trieste, Department of Physiology and Pathology
Methods/Techniques:	Toxicology - animal study, Toxicology - cytotoxicity
Additives/Contaminants:	Phycotoxins - other, Phycotoxins
Food Types:	Seafood

1
2
3
4
5
6
7
8
9
10
11
12
13
14
15
16
17
18
19
20
21
22
23
24
25
26
27
28
29
30
31
32
33
34
35
36
37
38
39
40
41
42
43
44
45
46
47
48
49
50
51
52
53
54
55
56
57
58
59
60

For Peer Review Only

Effects of yessotoxin (YTX) on the skeletal muscle: an update

Aurelia Tubaro^{a*}, Elena Bandi^b, Silvio Sosa^a, Maria Rosa Soranzo^b, Anna Giangaspero^a,
Valeria De Ninis^a, Takeshi Yasumoto^c, Paola Lorenzon^b

^aDepartment of Materials and Natural Resources, University of Trieste, via A. Valerio
6, I-34127 Trieste, Italy;

^bDepartment of Physiology and Pathology, University of Trieste, via A. Fleming 22, I-
34127 Trieste, Italy;

^cTama Laboratory, Japan Food Research Laboratories, 6-11-10 Nagayama, Tama,
Tokyo 206-0025, Japan

*Corresponding author: tubaro@units.it

Abstract

Yessotoxins (YTXs) are algal toxins originally included in the diarrhetic toxins. After oral intake, YTXs induce only ultra-structural changes (packages of swollen mitochondria) in cardiac cells. The aim of this study was to investigate the possible effects of YTX on the other contractile striated tissue, the skeletal muscle, *in vitro* and *in vivo*. *In vitro*, in skeletal mouse myotubes, YTX (0.01-1.0 μM) influenced cell excitability in a concentration- and time-dependent way. In the *in vivo* study, transmission electron microscopy analysis did not reveal any ultra-structural alteration of skeletal muscle after acute (1 mg kg⁻¹) or repeated (1 and 2 mg kg⁻¹ day⁻¹, for 7 days)

1
2
3
4 oral administration of YTX to mice. The observation that effects were detected *in vitro*
5
6 but not *in vivo* supports the hypothesis of a low YTX bioavailability to skeletal muscle
7
8 after *per os* intake. Therefore, our results seem to exclude a toxic effect in skeletal
9
10 muscle when YTX is consumed as a food contaminant.
11
12

13
14
15
16 **Keywords:** yessotoxin; skeletal muscle cells; calcium; videomicroscopy; transmission
17
18 electron microscopy.
19
20
21
22
23
24
25
26
27
28
29
30
31
32
33
34
35
36
37
38
39
40
41
42
43
44
45
46
47
48
49
50
51
52
53
54
55
56
57
58
59
60

Introduction

Yessotoxin (Figure 1) and analogues (YTXs) are ladder-shaped lipophilic polycyclic ether compounds of algal origin, initially included in the Diarrhetic Shellfish Poisoning (DSP) toxins group, and often detected in mussels together with the primary DSP toxin okadaic acid (OA). YTXs are produced by *Protoceratium reticulatum* (= *Gonyaulax grindley*) (Satake *et al.* 1997a), *Lingulodinium polyedrum* (= *Gonyaulax polyedra*) (Paz *et al.* 2004) or *Gonyaulax spinifera* (Rhodes *et al.* 2006), organisms that are distributed worldwide. So far, no human poisoning induced by YTXs has been reported (Toyofuku 2006). Moreover, since YTXs do not provoke diarrhoea, they have been recently reclassified and separately regulated from DSP toxins (CEE 2002).

“[Insert Figure 1 about here]”

The oral toxicity of YTXs appears to be low. After acute oral administration of YTX (1-10 mg kg⁻¹) in mice, only ultrastructural changes in cardiomyocytes were observed: the morphological alterations were detectable only in restricted areas of the heart close to the capillaries (Terao *et al.* 1990; Aune *et al.* 2002; Tubaro *et al.* 2003). In a more recent study consisting of 7 oral doses administered over a 3 weeks, a No Observable Adverse Effect Level (NOAEL) of 5 mg YTX kg⁻¹ was established (Espenes *et al.* 2004). In the absence of human data and applying a safety factor of 100, a provisional acute reference dose of 50 µg kg⁻¹, corresponding to a Regulatory Limit (RL) of 12 mg YTXs kg⁻¹ shellfish meat, was recently proposed (Toyofuku 2006). However, repeated daily oral administration of YTX (1 or 2 mg kg⁻¹ day⁻¹, for 7 days) in mice induced ultrastructural changes such as alterations of fibrils and packages of swollen

1
2
3
4 mitochondria in cardiomyocytes near capillaries, similar to those observed after acute
5
6 oral intake (Tubaro *et al.* 2004; Callegari *et al.* 2006).
7
8
9

10
11 *In vitro* studies showed that YTX causes apoptosis in skeletal muscle cell lines *via* a
12
13 mitochondrial pathway (Korsnes *et al.* 2006), suggesting that also the skeletal muscle
14
15 could represent a target tissue for the toxin. The aim of the present study was to further
16
17 investigate the effects of YTX on the skeletal muscle both *in vitro* and *in vivo*. *In vitro*
18
19 experiments were performed to investigate if YTX affected the intracellular calcium
20
21 transients generated by the action potentials. *In vivo* experiments were performed to
22
23 analyze the possible ultrastructural effects of YTX on skeletal muscle cells of mice
24
25 because no effect was previously observed by light microscopic examinations after
26
27 acute or repeated oral administration of YTX (Tubaro *et al.* 2003 and 2004).
28
29
30
31
32
33
34

35 **Materials and methods**

36 *Materials*

37
38 YTX was isolated from *P. reticulatum* collected in Mutsu Bay (Japan) (Murata *et al.*
39
40 1987). The purity of the final preparation was confirmed by mass spectrometry and
41
42 liquid chromatographic methods (Satake *et al.* 1997b; Yasumoto and Takizawa 1997).
43
44 YTX was dissolved in 95 % aqueous ethanol and, for oral administration, aliquots of the
45
46 stock solutions were properly diluted with saline solution (0.9 % NaCl), in order to
47
48 administer the appropriate dose of the toxin and reduce the concentration of ethanol to
49
50 1.8 % (v/v). For *in vitro* studies, aliquots of the stock solution of YTX were properly
51
52 diluted, in order to reach a concentration of ethanol in the cells medium lower than 1 %
53
54 (v/v). For *in vitro* studies, aliquots of the stock solution of YTX were properly
55
56 diluted, in order to reach a concentration of ethanol in the cells medium lower than 1 %
57
58 (v/v).
59
60

1
2
3
4
5
6
7 Dulbecco's modified Eagle's medium (DMEM), horse serum, penicillin, streptomycin
8
9 and glutamine were purchased from ICN Biomedicals (Irvine, USA). Bovine fetal calf
10
11 serum was purchased from PAA Laboratories (Pasching, Austria), 3 % glutaraldehyde
12
13 from Serva (Heidelberg, Germany) and Dow Epoxy Resin (DER 332; Unione Chimica
14
15 Europea; Milan, Italy). All other chemicals were Carlo Erba products of analytical grade
16
17 (Milan, Italy).
18
19

20 21 22 23 *Cell cultures*

24
25 Skeletal muscle cell cultures (i28) were established from mouse satellite cells (Irintchev
26
27 *et al.* 1997). Briefly, satellite cells were isolated from the hind leg muscles of 7-day-old
28
29 male Balb/c mice killed by cervical dislocation. Muscle tissue was minced and then
30
31 treated with collagenase and trypsin. Expansion and enrichment of myogenic cells were
32
33 achieved by repeated plating and cultivation in DMEM with D-valine containing 20 %
34
35 fetal bovine serum. Muscle cells could be maintained as exponentially growing
36
37 myoblasts over 40 passages in the presence of a medium consisting of HAM'S F-10
38
39 containing 20 % fetal calf serum (FCS), L-glutamine (2 mM), penicillin (100 U/ml),
40
41 and streptomycin (100 µg/ml). To induce cell differentiation and myotube fusion the
42
43 medium was replaced, 1 day after plating, with DMEM supplemented with 2 % horse
44
45 serum and L-glutamine, penicillin, and streptomycin as above. Cells were maintained at
46
47 37 °C in CO₂ (5 %)-enriched air. Experiments were performed on myoblasts maintained
48
49 in culture from the 5th to the 40th passage and cultured up to 10 days in differentiation
50
51 medium.
52
53
54
55
56
57
58
59
60

Video-imaging

Video-imaging was used to measure the intracellular calcium concentration ($[Ca^{2+}]_i$). Experiments were carried out at 37 °C on Fura-2 loaded myotubes attached to a coverslip treated with matrigel. All the experiments were performed on myotubes bathed in an external solution containing 2 mM $CaCl_2$. Briefly, the cells were alternatively excited at 340 and 380 nm and the fluorescence images were acquired with an intensified CCD camera [Hamamatsu Photonics, Hamamatsu, Japan]. The acquisition rate was 4 frames/s. The calculation of ratio images (Gryniewicz *et al.* 1985) and the temporal plots of the fluorescence signals were performed off-line.

Animals and experimental conditions

Experiments were carried out in conformity with the Italian D.L. n. 116 of 27 January 1992 and associated guidelines in the European Communities Council Directive of 24 November 1986 (86/609 ECC), concerning animal welfare.

Female CD-1 mice (18–20 g) were purchased from Harlan Italy (S. Pietro al Natisone, Italy). Groups of three animals were acclimated for 1 week under the conditions of controlled room temperature ($21 \pm 1^\circ C$), humidity (60–70 %), and a fixed artificial light cycle (7.00 – 19.00 h). Dust-free poplar chips were used as bedding (Harlan Italy; S. Pietro al Natisone, Italy). Mice were fed a global diet for rodents containing 18.5 % protein (Harlan Italy; S. Pietro al Natisone, Italy), and had free access to food and water.

YTX, dissolved in saline solution (0.9 % NaCl) containing 1.8 % ethanol (v/v), was administered to mice by gavage in a volume of 10 ml kg^{-1} body weight. The toxin was administered as a single dose (1 mg kg^{-1}) or as repeated daily doses for 7 days (1 mg

1
2
3
4 kg⁻¹ day⁻¹). Control animals were given 10 ml kg⁻¹ day⁻¹ of the vehicle (saline solution
5
6 containing 1.8 % ethanol v/v). The toxin or vehicle was administered in the morning
7
8 (9.00–10.00 h). Twenty-four hours after the last administration, the mice were killed by
9
10 ketamine hydrochloride (350 mg kg⁻¹, administered intraperitoneally). Skeletal muscle
11
12 (right hind leg) was removed and fixed for examination by transmission electron
13
14 microscopy (TEM).
15
16
17

18 19 20 21 *Transmission electron microscopy analysis*

22
23 Blocks of skeletal muscle smaller than 1 mm³ were promptly fixed in a solution of 3 %
24
25 glutaraldehyde in 0.1 M cacodylate buffer, pH 7.3, for 1 h at room temperature and 2 h
26
27 at 4 °C, rinsed three times (10 min each wash) in the same buffer and post fixed in 1 %
28
29 osmium tetroxide for 1 h at 4 °C. The samples were then dehydrated in graded ethanols
30
31 and embedded in Dow Epoxy Resin 332 (Lockwood 1964). Ultrathin sections were cut
32
33 by an ultratome Leica Ultracut UCT8 (Leica, Mikrosysteme Aktiengesellschaft, Wirm,
34
35 Austria), double stained with uranyl acetate and lead citrate (Venable and Coggeshall
36
37 1965) and examined with a Philips EM 208 transmission electron microscope.
38
39
40
41
42

43 44 45 *Statistical analysis*

46
47 *In vitro* data are expressed as means ± standard error. The Student's *t* test was used to
48
49 examine statistical significance, assumed for *p* values lower than 0.05.
50
51
52

53 54 **Results and discussion**

55
56 Mouse myotubes differentiated *in vitro* generate spontaneous action potentials,
57
58 accompanied by [Ca²⁺]_i transients and contractions. The mean event frequency is 0.16
59
60

1
2
3
4 Hz. The spontaneous action potentials, $[Ca^{2+}]_i$ transients and contractions resemble
5 those triggered by the nerve in skeletal muscle fibers being inhibited by tetrodotoxin
6 and verapamil (Lorenzon *et al.* 2002). The video-imaging technique was used to study
7 the effect of YTX on the skeletal muscle cell excitability, measuring the spontaneous
8 $[Ca^{2+}]_i$ transients.
9
10
11
12
13
14

15
16
17
18 Incubation of myotubes with YTX (1.0 μ M for 20 min) did not affect the frequency of
19 $[Ca^{2+}]_i$ transients (Figure 2). However, after 1 hour, an almost complete inhibition of
20 spontaneous activity was observed: the percentage of active cells was reduced by 96 %
21 with respect to the control cells (Figure 3). No effect was observed at the lower
22 concentrations used (0.1 and 0.01 μ M).
23
24
25
26
27
28
29
30
31
32

33 “[Insert Figure 2 about here]”
34
35
36
37

38 When the incubation time was increased to 24 hours, 0.1 μ M YTX significantly reduced
39 the spontaneous activity (77 %). After 48 hours of incubation, the percentage of active
40 cells was reduced by 97 % at all the YTX concentrations tested (Figure 3). It has to be
41 pointed out that the inhibition of the spontaneous activity after 48 hours incubation was
42 associated with a dramatic reduction in the number of viable cells. Thus, YTX affected
43 both the excitability and the viability of skeletal myotubes *in vitro* and its effect was
44 concentration- and time-dependent.
45
46
47
48
49
50
51
52
53
54
55

56 In silent myotubes incubated for 24 hours with 0.1 or 1.0 μ M YTX, we tested the
57 responsiveness to physiological stimuli, such as depolarization induced by perfusion
58
59
60

1
2
3
4 with 40 mM KCl, a classic membrane depolarizing agent, or 20 mM caffeine, a well
5
6 known agonist of the intracellular Ca^{2+} channels present on the surface of the
7
8 sarcoplasmic reticulum.
9

10
11
12
13
14 “[Insert Figure 3 about here]”
15

16
17
18 The percentage of cells responsive to KCl and caffeine was similar to that observed
19
20 under control conditions (Figure 4). Therefore, 24 hours incubation with YTX had no
21
22 effects on the mechanism controlling Ca^{2+} homeostasis in skeletal muscle cells.
23
24

25
26
27
28 “[insert Figure 4 about here]”
29

30
31
32 The effects of YTX on skeletal muscle were also evaluated *in vivo* after single (1 and 2
33
34 mg kg^{-1}) and repeated daily oral administration in mice (1 or 2 mg kg^{-1} day $^{-1}$, for 7
35
36 days). The mice were sacrificed 24 hours after the single or last dose and morphological
37
38 changes in skeletal muscle were analyzed by TEM. No morphological differences in the
39
40 skeletal muscle sections were noted between control and YTX-treated mice, neither
41
42 after acute administration nor at the end of the repeated YTX treatment. Particular
43
44 attention was given to the mitochondria and myofibrils. The myofibrils presented a
45
46 normal fine structure similar to the controls and unaltered mitochondria were observed
47
48 between the fibrils (Figure 5).
49
50
51

52
53
54
55
56 “[Insert Figure 5 about here]”
57
58
59
60

1
2
3
4
5 In conclusion, we observed significant *in vitro* effects on cell excitability and viability
6
7 when skeletal muscle cells were incubated with YTX. However the toxin did not cause
8
9 tissue damage or ultrastructural changes in the skeletal muscle *in vivo*. These results
10
11 support the hypothesis that YTX is poorly absorbed after *per os* intake and that its
12
13 bioavailability to skeletal muscle is too low to provoke significant morphological
14
15 changes. On the contrary, under the same experimental conditions, *in vivo* YTX
16
17 provokes ultrastructural myocardium changes. Thus, cardiac tissue seems to be the
18
19 specific target for YTX. Further studies are in progress to further clarify the differing
20
21 responses of cardiac and skeletal muscle, an aspect that could be an important
22
23 determinant in view of the proposed deregulation for YTX. The present EU Regulatory
24
25 Limit for YTX is 1 mg of YTX equivalents per kg of shellfish meat (CEE 2002).
26
27 However, this tolerance level was established considering the estimated No Observable
28
29 Adverse Effect Level of 1 mg YTX kg⁻¹ body weight, based on the results obtained
30
31 from acute oral exposure to mice, as well as assuming an average shellfish consumption
32
33 of 100 g and applying a safety factor of 600 due to the lack of data and indications of
34
35 effects on the cardiac muscle (Espenes *et al.* 2004).
36
37
38
39
40
41
42
43
44

45 **Acknowledgements**

46
47 This work was supported by a grant of the Italian Ministry of Instruction, University
48
49 and Research. The authors are grateful to Prof. Roberto Della Loggia (University of
50
51 Trieste, Italy) for the stimulating discussion, and to Mr. Claudio Gamboz, “Centro
52
53 Coordinamento e Sviluppo Progetti e Apparecchiature – CSPA”, University of Trieste,
54
55 for his careful technical work.
56
57
58
59
60

References

Aune T, Sørby R, Yasumoto T, Ramstad H, Landsverk T. 2002. Comparison of oral and intraperitoneal toxicity of yessotoxin towards mice. *Toxicon* 40: 77-82.

Callegari F, Sosa S, Ferrari S, Soranzo MR, Pierotti S, Yasumoto T, Tubaro A, Rossini GP. 2006. Oral administration of yessotoxin stabilizes E-cadherin in mouse colon. *Toxicology* 227: 145-155.

CEE 2002. Commission decision of 15 March 2002. Official Journal of the European Communities 16.3.2002.

Espenes A, Aasen J, Satake M, Smith A, Eraker N, Aune T. 2004. Toxicity of yessotoxin in mice after repeated oral exposure. Galway (Ireland): Henshilwood K, Deegan B., McMahon T., Cusack C., Keaveney S., Silke J., O' Cinneide M., Lyons D., Hess P. Molluscan Shellfish Safety. Proceedings 5th International Conference on Molluscan Shellfish Safety (June 14-18, 2004, Galway, Ireland); pp. 419-423.

Grynkiewicz G, Poenie M, Tsien RY. 1985. A new generation of Ca²⁺ indicators with greatly improved fluorescence properties. *J Biol Chem.* 260: 3440-3450.

Irintchev A, Langer M, Zweyer M, Theisen R, Wernig A. 1997. Functional improvement of damaged adult mouse by implantation of primary myoblasts. *J Physiol.* 500: 775-785.

Korsnes MS, Hetland DL, Espenes A, Aune T. 2006. Induction of apoptosis by YTX in myoblast cell lines via mitochondrial signalling transduction pathway. *Toxicol In Vitro* 20: 1419-1426.

Lockwood WR. 1964. A reliable and easily sectioned epoxy embedding medium. *The Anatomical Record* 150:129-140.

- 1
2
3
4 Lorenzon P, Bernareggi A, Degasperi V, Nurowska E, Wernig A, Ruzzier F. 2002.
5
6 Properties of primary mouse myoblasts expanded in culture. *Exp Cell Res.* 278: 84-91.
7
8
9 Murata M, Kumagai M, Lee JS, Yasumoto T. 1987. Isolation and structure of
10
11 yessotoxin, a novel polyether compound implicated in diarrhetic shellfish poisoning.
12
13 *Tetrahedron Lett.* 28: 5869–5872.
14
15
16 Paz B, Riobó P, Fernández ML, Fraga S, Franco JM. 2004. Production and release of
17
18 yessotoxin by the dinoflagellates *Protoceratium reticulatum*, and *Lingulodinium*
19
20 *polyedrum* in culture. *Toxicon* 44: 251-258.
21
22
23 Rhodes L, McNabb P, de Salas M, Briggs L, Beuzenberg V, Gladstone M. 2006.
24
25 Yessotoxin production by *Gonyaulax spinifera*. *Harmful Algae* 5: 148-155.
26
27
28 Satake M, MacKenzie L, Yasumoto T. 1997a. Identification of *Protoceratium*
29
30 *reticulatum* as the biogenetic origin of yessotoxin. *Nat Toxins* 5: 164-167.
31
32
33 Satake M, Tubaro A, Lee JS, Yasumoto T. 1997b. Two new analogs of yessotoxin,
34
35 homoyessotoxin and 45-hydroxyhomoyessotoxin, isolated from mussels of the Adriatic
36
37 Sea. *Nat Toxins* 5: 107–110.
38
39
40 Terao K, Ito E, Oarada M, Murata M, Yasumoto T. 1990. Histopathological studies on
41
42 experimental marine toxin poisoning-5. The effects in mice of yessotoxin isolated from
43
44 *Patinopecten yessoensis* and of a desulfated derivative. *Toxicon* 28: 1095-1104.
45
46
47 Toyofuku H. 2006. Joint FAO/WHO/IOC activities to provide scientific advice on
48
49 marine biotoxins (research report). *Mar Poll Bull.* 52: 1735-1745.
50
51
52 Tubaro A, Sosa S, Altinier G, Soranzo MR, Satake M, Della Loggia R, Yasumoto T.
53
54 2004. Short-term oral toxicity of homoyessotoxins, yessotoxin and okadaic acid in
55
56 mice. *Toxicon* 43: 439-445.
57
58
59
60

1
2
3
4 Tubaro A, Sosa S, Carbonatto M, Altinier G, Vita F, Melato M, Satake M, Yasumoto T.
5
6 2003. Oral and intraperitoneal acute toxicity studies of yessotoxin and homoyessotoxins
7
8 in mice. *Toxicon* 41: 783-792.
9

10
11 Turrell EA, Stobo L. 2007. A comparison of the mouse bioassay with liquid
12
13 chromatography-mass spectrometry for the detection of lipophilic toxins in shellfish
14
15 from Scottish waters. *Toxicon*. 50: 442-7.
16
17

18
19 Venable JH, Coggeshall R. 1965. A simplified lead citrate stain for use in electron
20
21 microscopy. *J Cell Biol.* 25: 401–408.
22

23
24 Yasumoto T, Takizawa A. 1997. Fluorometric measurement of yessotoxins in shellfish
25
26 by high-pressure liquid chromatography. *Biosci Biotechnol Biochem.* 61: 1775–1777.
27
28
29
30
31
32
33
34
35
36
37
38
39
40
41
42
43
44
45
46
47
48
49
50
51
52
53
54
55
56
57
58
59
60

1
2
3
4
5 **Figure captions:**
6
7
8

9 **Figure 1.** Chemical structure of yessotoxin.
10
11

12
13
14 **Figure 2.** Representative trace showing the $[Ca^{2+}]_i$ transients generated by myotubes
15 under control conditions. YTX does not affect the frequency of the cell activity within
16 20 min of incubation (number of observed cells = 15).
17
18

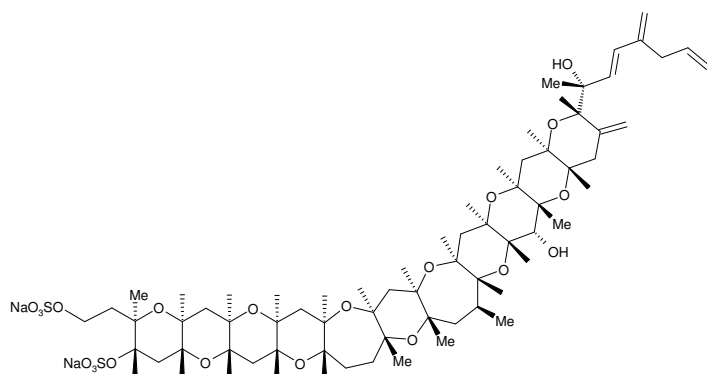
19
20
21
22
23 **Figure 3.** Effect of YTX (0.01, 0.1 and 1.0 μ M) on the number of myotubes exhibiting
24 Ca^{2+} spiking activity after 1, 24 or 48 hours incubation. For each experimental point, 10
25 optical fields were randomly chosen and at least 70 cells were analyzed. * significantly
26 different from the control, $p < 0.05$, Student-s t-test.
27
28
29
30
31

32
33
34
35 **Figure 4.** Responsiveness of myotubes to depolarisation by KCl (40 mM) or caffeine
36 (20 mM) after 24 hours incubation with YTX (0.1 and 1.0 μ M). The two traces show
37 representative $[Ca^{2+}]_i$ transients elicited by KCl and caffeine perfusion. The histograms
38 show the percentage of responsive cells detected in the presence of the two stimuli. For
39 each experimental point 3 optical fields were randomly chosen and at least 16 cells were
40 analysed.
41
42
43
44
45
46
47
48
49
50

51
52 **Figure 5.** Electron micrographs of longitudinal sections of skeletal muscle from control
53 (upper image) and YTX-treated mice (2 mg kg^{-1} day $^{-1}$, for 7 days; lower image).
54 Similarly, no ultrastructural alterations consequent to YTX administration were
55 observed after acute treatment.
56
57
58
59
60



Comment [SS1]: Figure 1

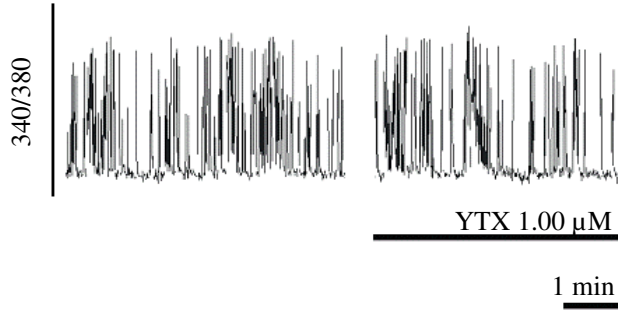


Peer Review Only

1
2
3
4
5
6
7
8
9
10
11
12
13
14
15
16
17
18
19
20
21
22
23
24
25
26
27
28
29
30
31
32
33
34
35
36
37
38
39
40
41
42
43
44
45
46
47
48
49
50
51
52
53
54
55
56
57
58
59
60



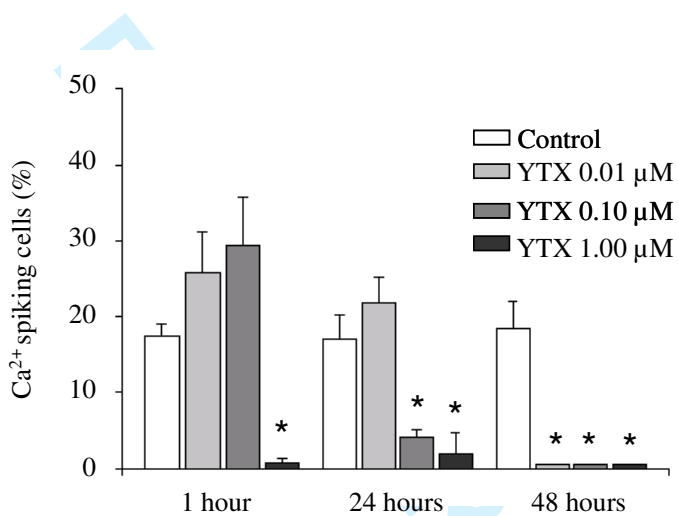
Comment [SS2]: Figure 2



er Review Only



Comment [SS3]: Figure 3

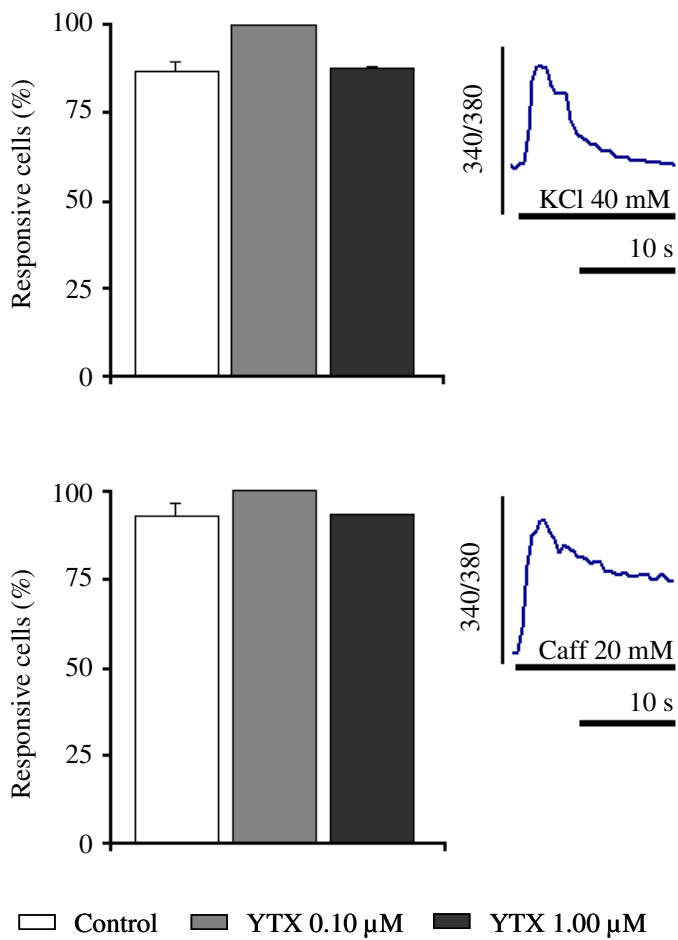


Review Only

1
2
3
4
5
6
7
8
9
10
11
12
13
14
15
16
17
18
19
20
21
22
23
24
25
26
27
28
29
30
31
32
33
34
35
36
37
38
39
40
41
42
43
44
45
46
47
48
49
50
51
52
53
54
55
56
57
58
59
60



Comment [SS4]: Figure 4

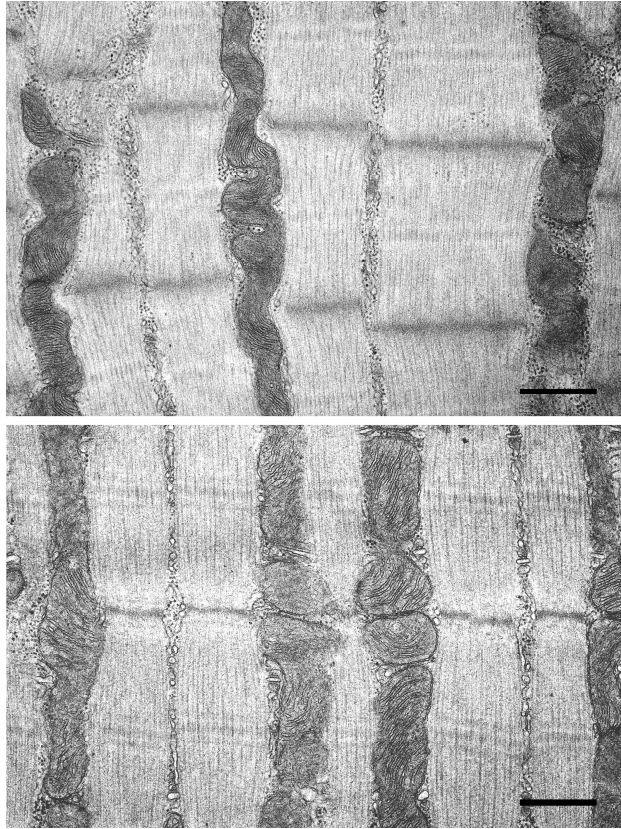


Only

1
2
3
4
5
6
7
8
9
10
11
12
13
14
15
16
17
18
19
20
21
22
23
24
25
26
27
28
29
30
31
32
33
34
35
36
37
38
39
40
41
42
43
44
45
46
47
48
49
50
51
52
53
54
55
56
57
58
59
60



Comment [SS5]: Figure 5



Pre-proof Only