



HAL
open science

Predictors of Human Papilloma Virus (HPV) infection in Italian women

Maria Cecilia Cercato, Luciano Mariani, Amina Vocaturo, Angela Carrone,
Irene Terrenato, Giuseppina Morano, Maria Benevolo, Francesca Rollo,
Chiara Germelli, Francesca Paolini, et al.

► **To cite this version:**

Maria Cecilia Cercato, Luciano Mariani, Amina Vocaturo, Angela Carrone, Irene Terrenato, et al..
Predictors of Human Papilloma Virus (HPV) infection in Italian women. *Journal of Medical Virology*,
2010, 82 (11), pp.1921. 10.1002/jmv.21887 . hal-00577347

HAL Id: hal-00577347

<https://hal.science/hal-00577347>

Submitted on 17 Mar 2011

HAL is a multi-disciplinary open access archive for the deposit and dissemination of scientific research documents, whether they are published or not. The documents may come from teaching and research institutions in France or abroad, or from public or private research centers.

L'archive ouverte pluridisciplinaire **HAL**, est destinée au dépôt et à la diffusion de documents scientifiques de niveau recherche, publiés ou non, émanant des établissements d'enseignement et de recherche français ou étrangers, des laboratoires publics ou privés.



Predictors of Human Papilloma Virus (HPV) infection in Italian women

Journal:	<i>Journal of Medical Virology</i>
Manuscript ID:	JMV-10-1881.R1
Wiley - Manuscript type:	Research Article
Date Submitted by the Author:	01-Jun-2010
Complete List of Authors:	Cercato, Maria Cecilia; Regina Elena National Cancer Institute, Department of Epidemiology Mariani, Luciano; Regina Elena National Cancer Institute, Department of Gynaecologic Oncology Vocaturro, Amina; Regina Elena National Cancer Institute, Department of Pathology Carrone, Angela; "Sapienza" University of Rome, Department of Gynecology and Obstetrics Terrenato, Irene; Regina Elena National Cancer Institute, Department of Epidemiology Morano, Giuseppina; "Sapienza" University of Rome, Department of Gynecology and Obstetrics Benevolo, Maria; Regina Elena National Cancer Institute, Department of Pathology Rollo, Francesca; Regina Elena National Cancer Institute, Department of Pathology Germelli, Chiara; Regina Elena National Cancer Institute, Department of Gynaecologic Oncology Paolini, Francesca; Regina Elena National Cancer Institute, Laboratory of Virology Venuti, Aldo; Regina Elena National Cancer Institute, Laboratory of Virology
Keywords:	HPV, Cervical cancer, risk factors, sexual behaviour, questionnaire



1
2
3 **PREDICTORS OF HUMAN PAPILLOMA VIRUS (HPV) INFECTION IN**
4
5 **ITALIAN WOMEN**
6
7
8
9

10 M.C. Cercato^{*}, L. Mariani[§], A. Vocaturo[#], A. Carrone⁺, I. Terrenato^{*}, G. Morano⁺, M.
11 Benevolo[#], F. Rollo[#], C. Germelli[§], F. Paolini[¶], A. Venuti[¶].
12
13
14
15
16

17 *Authors Affiliations:*

18
19
20 ^{*}Department of Epidemiology, “Regina Elena” National Cancer Institute”, Via E.
21 Chianesi 53, 00144 Rome, Italy.
22
23

24 [§]Department of Gynaecologic Oncology, “Regina Elena” National Cancer Institute, Via
25 E. Chianesi 53, 00144 Rome, Italy.
26
27

28
29 [#] Department of Pathology, “Regina Elena” National Cancer Institute, Via E. Chianesi
30 53, 00144 Rome, Italy.
31
32

33
34 ⁺Department of Gynecology and Obstetrics "Sapienza" University of Rome, Viale del
35 Policlinico 155, 00155 Rome, Italy.
36
37

38
39 [¶]Laboratory of Virology, “Regina Elena” National Cancer Institute, Via E. Chianesi 53,
40 00144 Rome, Italy.
41
42
43
44
45

46 *Corresponding Author:*

47
48 Cercato Maria Cecilia, Department of Epidemiology, “Regina Elena” National Cancer
49 Institute, Via Elio Chianesi 53, 00144 Rome, ITALY. Tel.: +39-06-52666913; Fax:
50 +39-06-52662732 (e-mail: cercato@ifo.it)
51
52
53
54
55
56

57 **Shortened title:** HPV infection risk factors

58
59 **Grants :** The Italian Ministry of Health partially funded the study.
60

ABSTRACT

Background: HPV infection is a “necessary cause” of cervical cancer and it is sexually transmitted. Due to upcoming mass vaccination investigation on risk factors for infection is the basis to implement prophylactic strategy even in older women.

Objective: The aim of the study was to evaluate predictors of high-risk HPV infection in adult women.

Methods: Between 2006 and 2008, one hundred women aged >18 years, with no previous treatment for cervical lesions, were screened for high-risk HPV infection in Rome, Italy. Risk factors for HPV infection were investigated through a questionnaire including: ethnicity, religion, education, marital status, sexual behaviour, gynaecological and obstetrical history, smoking and alcohol intake.

Results: Multivariate analysis identified the “never married-separated/divorced” status (OR: 3.38; 95% CI: 1.14-10.12) as predictor of HPV infection, while having a higher age at the first sexual intercourse shows a protective effect (OR: 0.84; 95% CI: 0.71-1.00). A trend for the association between the infection and having more than three lifetime partners was also observed (OR: 2.57; 95% CI: 0.86-7.71). No significant association was found for other demographic characteristics investigated.

Conclusions: These findings provide a contribution in the knowledge of an adult population defining a “high risk” sexual behavioural profile and could be helpful to target prophylactic strategies in older woman.

Keywords

HPV, cervical cancer, epidemiology, risk factors, sexual behaviour, questionnaire.

INTRODUCTION

Cervical cancer (CC) is associated with Human Papillomavirus (HPV) infection, which is transmitted during sexual intercourse [Walboomers et al., 1999; American Cancer Society, 2008]. CC is the second most common cancer in woman worldwide and is more frequent in socio-economically deprived regions where proper screening and/or vaccination programs are not easily available [World Health Organization, 2006; Almonte et al., 2008].

Over one hundred HPV genotypes have been identified and classified into low-risk (LR) (e.g. type 6,11) and high-risk (HR) (e.g. type 16,18,31,33,45) groups, according to their potential oncogenic effects [Muñoz et al., 2006]. In the U.S.A., 75% of women aged between 14 and 50 years become infected during their lives, but the great majority of HPV genital infections are transient and are cleared within 2 years by host immune response [World Health Organization, 2006]. Persistent infections with HR-HPV is involved in the pathogenesis of cervical intraepithelial neoplasia and in the progression to cervical cancer [Snijders et al., 2006].

HPV DNA prevalence varies by continent and by age: it is high (up to 30%) in young women (<25 years) all over the world except for Asia, decreasing in the middle-age group, even though a second rise among in perimenopausal women has been recently observed [Almonte et al., 2008; Bosch et al., 2008; Smith et al., 2008].

Contracting HPV genital infection appears to be associated with increased sexual activity and thus with number of partners; other involved factors are age at the first sexual intercourse, marital status, cigarette smoking and contraceptives use [Vaccarella et al., 2006; Almonte et al., 2008; Herbert and Coffin, 2008]. However epidemiological studies investigating risk factors for HPV infection have not been entirely consistent, due to the differences in population characteristics (demographic

1
2
3 growth rate, sexual habits, HPV prevalence) as well as to the potential misclassification
4 involved in the assessment of sexual history [Schlecht et al., 2001; Schroder et al.,
5
6
7
8
9 2003].

10
11 Despite increasing effort, the burden and natural history of HPV infection is not
12 completely understood and the upcoming mass vaccination will certainly change HPV
13 epidemiology. Therefore baseline (i.e. pre-vaccine) epidemiological investigations on
14
15
16
17
18
19
20
21
22
23
24
25
26
27
28
29
30
31
32
33
34
35
36
37
38
39
40
41
42
43
44
45
46
47
48
49
50
51
52
53
54
55
56
57
58
59
60
prophylactic strategies.

The aim of the present study was to investigate predictors of HR-HPV infection
in women referred as outpatients to the “Regina Elena” National Cancer Institute and to
the University “La Sapienza” in Rome, Italy, for HPV DNA detection and cervical
cancer prevention.

MATERIALS AND METHODS

Population and study design

This study was part of a cooperative project conducted from April 2006 to
December 2008, supported by the Italian Ministry of Health and coordinated by the
“Regina Elena” National Cancer Institute. The study population were women who
consecutively attended the Department of Gynaecologic Oncology of the “Regina
Elena” National Cancer Institute and of the University “La Sapienza” of Rome, as
outpatients for HPV DNA detection and cervical cancer prevention. Exclusion criteria
were: age <18 years, positive history for cancer, previous surgical treatment for cervical
lesions, presence of immunological disorders, pregnancy or cognitive impairment.
Eligible patients were asked to participate and a written informed consent obtained. The
study was approved by the Local Medical Ethical Committee.

1
2
3 At enrolment a baseline questionnaire investigating common risk factors for
4 HPV infection and for cervical cancer was given by the physician just before the clinical
5 examination. A gynaecologist collected clinical data and during the scheduled clinical
6 procedures collected cervicovaginal specimens for HPV DNA analysis to be delivered
7 to the Department of Pathology.
8
9

10 Questionnaire

11 The questionnaire, to be filled in by the patient, consisted of multiple choice questions
12 addressing: ethnicity, religion, educational level, marital status, gynaecologic and
13 obstetric history, sexual behaviour (age at first intercourse, lifetime number of partners,
14 frequency of intercourse), contraceptive use, alcohol use and smoking. Knowledge
15 about Pap test and frequency of testing was also investigated.
16
17

18 HPV DNA Detection and Genotyping

19 Cervico-vaginal specimens were collected by cytobrush (Cytoc, Rome, Italy) and Ayre
20 spatula (Cytoc), in 20 mL of PreservCyt solution (Cytoc), stored at 4°C until the use.
21
22

23 HR HPV test was performed according to scientific evidence by means of the HC2
24 technique (Qiagen, Milan, Italy), a semi-quantitative signal-amplified hybridization
25 assay for the chemiluminescent detection of the 13 most common HR HPV types
26 (genotypes: 16, 18, 31, 33, 35, 39, 45, 51, 52, 56, 58, 59 and 68), as described by the
27 manufacturer [Leinonen et al., 2009]. Before the HC2 testing, 4 ml of PreservCyt
28 solution were processed by means of the HC2 Sample Conversion Kit (Qiagen). The
29 positive cut-off (CO) value was considered the average of the positive control samples.
30
31 The results were considered positive when the ratio between the specimen's light
32 emission units (RLU) and the chosen positive CO (RLU/CO) was 1 or greater.
33
34

35 HPV DNA genotyping was carried out by using Linear Array HPV Genotyping Test
36 (LA Roche Molecular System, Rome, Italy). 250 µl of PreservCyt sample were taken
37
38
39
40
41
42
43
44
45
46
47
48
49
50
51
52
53
54
55
56
57
58
59
60

1
2
3 for DNA extraction, as described by the manufacturer. The assay involves the
4
5 amplification of a 450 bp amplicon, generated by a consensus PGMY primer set,
6
7 targeting the conserved L1 region [Gravitt et al., 2000; Coutlée et al., 2002]. The
8
9 detection of amplified products was achieved by the hybridization to a nylon strip,
10
11 containing two levels of β -globin control probes and 37 LR and HR anogenital HPV
12
13 types probes (types 6, 11, 16, 18, 26, 31, 33, 35, 39, 40, 42, 45, 51, 52, 53, 54, 55, 56,
14
15 58, 59, 61, 62, 64, 66, 67, 68, 69, 70, 71, 72, 73, 81, 82, 83, 84, IS39 and CP6180).
16
17
18

19 20 Statistical analysis

21
22 For the analysis the patients were categorized as “HPV-positive” when at least one of
23
24 the two basal HPV DNA tests were positive for high risk genotypes and as “HPV-
25
26 negative” when it tested negative to both tests.
27
28

29
30 Descriptive statistics were computed for all variables. Continuous data were reported as
31
32 the mean and standard deviation or the median and range; categorical data were
33
34 represented by frequencies and percentage values. The Student’s T-test was used to
35
36 compare continuous variables; the Pearson’s Chi-Squared and Fisher’s Exact test, when
37
38 appropriate, were used to detect potential differences between categorical variables.
39
40 Cohen’s Kappa and its relative 95% Confident Interval (95% CI) was used to assess the
41
42 concordance the between HC2 and Linear Array HPV Genotyping Test in detecting the
43
44 HPV status. P-values less than 0.05 were considered statistically significant.
45
46
47

48
49 Odds ratios (ORs) and their relative 95% CIs were computed through univariate and
50
51 multivariate logistic regression models in order to evaluate the association between
52
53 HPV infection and socio-demographic and behavioural variables. Data of some
54
55 variables were grouped due to the small number. “Primary” and “secondary school”
56
57 educational levels were grouped together. Furthermore, “marital status” was divided
58
59 into two categories “never married-separated/divorced” and “married-living together-
60

widow”, because, according to the “marriage protection hypothesis”, family life is considered to be associated with healthier behaviour and because widowhood is similar to cohabitation in sociologic terms [Contoyannis and Jones, 2004; Sellors et al., 2003].

The number of lifetime sexual partners was categorized into up to three and more than three according to the median value. The multivariate logistic regression model was developed using stepwise regression (forward selection) with predictive variables that were significant in the univariate analyses. The enter and remove limits were $p = 0.10$ and $p = 0.15$, respectively

The data were analysed by using the SPSS version 11.5 (SPSS, Inc., Chicago, IL).

.

RESULTS

Ninety-four out of the 100 consecutive eligible women submitted to the HPV DNA detection and genotyping tests agreed to complete the questionnaire.

According to the results of detection and genotyping HPV DNA tests 54 (57%) women were classified as “HR-HPV-positive” and 40 (43%) as “HPV-negative”. The agreement between the two tests was 91% (Cohen’s K: 0.83 95% CI[0.63 -1.00]).

Overall, twenty-five different genotypes were identified: the most common high-risk types were 16 (28%), 31 (16%), 51 and 52 (14%) (Figure 1). No single low-risk infection was found. Multiple HPV types were detected in 26 (50%) out of the 52 positive women at the Linear Array HPV Genotyping Test. Co-infection by two viruses were found in 25% of the positive cases, by three viruses in 15% and by more than three viruses in 10%. Co-infection by three or more genotypes were more frequent in young (>35 years) woman (33% vs 9%).

1
2
3 Table I shows the characteristics of the population. All except one were Caucasian and
4 the great majority (90%) belonged to the Christian faith (data not shown). The
5 “positive” women were slightly younger but the mean age values did not differ
6 significantly in the two groups. The “positive” women were more frequently “never
7 married-separated/divorced”, reported a lower age at their first sexual intercourse (FSI)
8 (17,9 vs 20.3 years), a higher number of lifetime partners (5.3 vs 3.0), smoking habits
9 and alcohol consumption. No differences in educational level, number of pregnancies
10 and of childbirths, frequency of intercourse, and use of estroprogestinic as well as
11 condoms were observed. Almost all women reported to have knowledge of the Pap test
12 and to undergo it regularly or occasionally.
13
14

15
16
17
18
19
20
21
22
23
24
25
26
27 At univariate analysis marital status, age at the FSI, lifetime numbers of sexual partners,
28 past or current smoking habits, years of smoking, number of cigarettes, and regular use
29 of alcohol were all factors predicting HPV infection (Tab.II). Multivariate analysis
30 confirmed that the “never married-separated/divorced” status and a lower age at the first
31 sexual intercourse were independent factors predicting HR-HPV infection (Tab.II). A
32 trend for the association between the infection and having more than three lifetimes
33 partners was also observed. No association was found for other variables included in the
34 logistic regression model.
35
36
37
38
39
40
41
42
43
44
45
46
47

48 **DISCUSSION**

49
50
51 Cervical cancer is the second most common cancer in women worldwide and the
52 estimate of the attributable fraction due to HPV infection range from 90% to 98%
53 [Bosch and de Sanjosé, 2003]. HPV 16 and 18 are the most frequent types associated
54 with CC and two prophylactic vaccines against these high-risk variants have been
55
56
57
58
59
60

1
2
3 recently introduced in several countries mainly in young women (up to 26 years)[Ault
4 and the FUTURE II Study Group, 2007; Harper and Paavonen, 2008].
5
6

7
8 This study describes the predictors of HR-HPV infection in a sample of Italian
9 women. The results highlight the behavioural characteristics that identify a “high-risk”
10 profile for HPV infection, providing useful information to widen future prophylactic
11 strategies also in older age-classes.
12
13
14
15

16
17 The high compliance obtained (94%) confirmed the practicable features of the
18 questionnaire employed and showed a positive attitude towards cervical cancer
19 prevention of these women who, once informed about the aim of the study, agreed to
20 disclose information on their sexual behaviour.
21
22
23
24
25

26
27 The results of the multivariate analysis showed that having a “never married-
28 separated/divorced” status and an early age at the FSI are independent risk factors for
29 HR-HPV infection. A trend, although not significant probably for the small size of the
30 population, was also observed for having more than three lifetime partners. These
31 findings are in agreement with previous studies showing that having a “never married”
32 or a “separated/divorced” status, an early age at the FSI or a higher “sexual age” (i.e.
33 years of being sexually active) are all factors associated with HPV infection [Almonte et
34 al., 2008; Sellors et al., 2000; Lenselink et al., 2008; Tonon et al., 1999]. According to
35 other authors age at the FSI is more likely to be a predictor of the total number of
36 partners in a lifetime than a factor independently associated with the infection
37 [Hildesheim et al., 2001; Burchell et al., 2006].
38
39
40
41
42
43
44
45
46
47
48
49
50
51
52

53 Sexual activity with changing partners represents an additional well-known
54 predictor of infection [Almonte et al., 2008; Herbert and Coffin, 2008; Vaccarella et al.,
55 2006; Chan et al., 2009; Sellors et al., 2000; Sellors et al., 2003; Lenselink et al., 2008;
56 Shields et al., 2004; Venuti et al., 1994]. A pooled analysis of the IARC HPV surveys of
57
58
59
60

1
2
3 11,337 women of nine countries (including areas Latino America, South-Eastern Asia,
4 Spain and Africa) reported a significant increased risk of HPV infection (any type) for
5 women with two or more lifetime partners vs one (OR: 1.86; 95%CI: 1.63-2.11)
6 [Vaccarella et al., 2006]. In several case-control and cross sectional studies conducted in
7 countries at different HPV prevalence the lifetime number and the number of sexual
8 partners in the last 6-12 months were strongly associated with the presence of the
9 infection [Almonte et al., 2008; Lenselink et al., 2008; Winer et al., 2003].

10
11
12
13
14
15
16
17
18
19
20 In this study the multivariate analysis showed no association between the risk of
21 infection and the use of oral contraceptives, the use of condom, smoking and alcohol
22 intake. The findings are consistent with the results of other studies, however no
23 conclusive data are available [Lenselink et al., 2008; Sellors et al., 2003; Sellors et al.,
24 2000; Winer et al., 2003]. In fact, the protective effect of a condom against HPV
25 infection is not well established and does not seem to be as strong as for other sexual
26 transmitted infections because of its transmission by skin-to-skin contact [Vaccarella et
27 al., 2006; Burchell et al., 2006]. Data on the role of smoking is still debated and some
28 studies show a positive association with current or past smoking habits [Sellors et al.,
29 2000; Winer et al., 2003; Chan et al., 2009]. Smoking has been independently
30 associated with an increased risk of cervical cancer and therefore has an acting role as a
31 HPV co-factor in the cancerogenesis process [International Collaboration of
32 Epidemiological studies of Cervical Cancer, 2007].

33
34
35
36
37
38
39
40
41
42
43
44
45
46
47
48
49
50
51 The study was not aimed to assess the prevalence of HPV infection. The high
52 prevalence of the HR-HPV DNA infection observed in this population is probably due
53 to the sample selection among patients referred by their general practitioners to two
54 qualified Institutions for Research for HPV detection and cervical cancer screening, and
55 could represent a limitation of the study. Other limitations are the small size of the
56
57
58
59
60

1
2
3 sample that does not allow to investigate the role of a specific HR-HPV type, and, as
4
5 highlighted by other authors, the potential misclassification involved in reporting sexual
6
7 history due to the recall biases or to intentional under-reported number of partners
8
9 [Schroder et al., 2003; Schlecht et al., 2001]. Finally, previous infections in HPV
10
11 negative patients were not assessed by serologic markers taking into account the low
12
13 sensibility of the test as well as the scant relevance of the transient infections in the
14
15 carcinogenesis [Snijders et al., 2006; Schiffman and Castle, 2003]
16
17
18

19
20 Epidemiology of HPV infection is going to change because of upcoming mass
21
22 vaccination. HPV vaccine trials have established that both vaccines (the bivalent against
23
24 16,18 and the quadrivalent against 16,18,6,11) produce a potent immunological
25
26 response and are associated with an efficacy rate close to 100% for at least 5 years in
27
28 naïve women [Villa et al., 2005; Villa et al., 2006; Harper et al., 2004; Harper et al.,
29
30 2006; Ault and the FUTURE II Study Group, 2007; Paavonen et al., 2009]. National
31
32 regulatory agencies (i.e. Food and Drug Administration, European Medicines Agency)
33
34 have approved the two commercial products (GardasilTM and CervarixTM) in most
35
36 countries for use in young women (up to 26 years). Furthermore, because of the
37
38 evidence of immunobridging also in women up to the age of 55 years, in selected
39
40 regions there are approvals for women aged >26 years [Harper and Paavonen, 2008;
41
42 Schwarz et al., 2009; Castellsagué et al., 2009].
43
44
45
46
47

48 Taking into account the safety and efficacy data available, increasing
49
50 interventions to immunize women of different ages are expected.
51
52
53

54 55 **CONCLUSIONS**

56
57 Prevalence of HR-HPV infection is high in this selected population and is
58
59 mainly associated to sexual behaviour. These findings contribute to the knowledge of an
60

1
2
3 adult population in defining a “high risk” behavioural profile and could be helpful to
4
5 target prophylactic strategies in older woman.
6
7
8
9

10 **Conflict of interest statement**

11
12 The authors have no conflict of interest to disclose.
13
14

15 **ACKNOWLEDGMENTS**

16
17
18 The authors thank the Italian Ministry of Health that partially funded the study and the
19
20
21
22 Lega Italiana Lotta Tumori (LILT).
23
24
25
26
27
28
29
30
31
32
33
34
35
36
37
38
39
40
41
42
43
44
45
46
47
48
49
50
51
52
53
54
55
56
57
58
59
60

REFERENCES

Almonte M, Albero G, Molano M, Carcamo C, García PJ, Pérez G. 2008. Risk factors for human papillomavirus exposure and co-factors for cervical cancer in Latin America and the Caribbean. *Vaccine* 26:L16-36.

American Cancer Society. 2008. Detailed guide: cervical cancer. What are the risk factors for cervical cancer? American Cancer Society Web site. Available at: http://www.cancer.org/docroot/CRI/content/CRI_2_4_2X_What_are_the_risk_factors_for_cervical_cancer_8.asp.(last accessed: November 15, 2009).

Ault KA, The Future II Study Group. 2007. Effect of prophylactic human papillomavirus L1 virus-like-particle vaccine on risk of cervical intraepithelial neoplasia grade 2, grade 3, and adenocarcinoma in situ: a combined analysis of four randomized clinical trial. *Lancet* 369:1861–1868.

Bosch FX, de Sanjosé S. 2003. Chapter 1 : Human papillomavirus and cervical cancer-burden and assessment of causality. *J Natl Cancer Inst Monogr* 31:3-13.

Bosch FX, Burchell AN, Schiffman M, Giuliano AR, de Sanjosè S, Bruni L, Tortolero-Luna G, Kruger Kjaer S, Muñoz N. 2008. Epidemiology and natural history of Human Papilloma Virus infections and type-specific implications in cervical neoplasia. *Vaccine* 26:K1-K16.

Burchell AN, Winer RL, de Sanjose S, Franco EL. 2006. Chapter 6: Epidemiology and transmission dynamics of genital HPV infection. *Vaccine* 24:S52–S61.

1
2
3 Castellsagué X, Schneider A, Kaufmann AM, Bosch FX. 2009. HPV vaccination
4 against cervical cancer in women above 25 years of age: key considerations and current
5 perspectives. *Gynecol Oncol* 115:S15-S23.
6
7

8
9
10
11
12 Chan PK, Ho WC, Wong MC, Chang AR, Chor JS, Yu MY. 2009. Epidemiologic risk
13 profile of infection with different groups of human papillomaviruses. *J Med Virol* 81:
14 1635-1644.
15
16
17

18
19
20
21
22 Coutlée F, Gravitt P, Kornegay J, Hankins C, Richardson H, Lapointe N, Voyer H,
23 Franco E. 2002. Use of PGM1 primers in L1 consensus PCR improves detection of
24 human papillomavirus DNA in genital samples. *J Clin Microbiol* 39:902-7.
25
26
27

28
29
30
31 P.Contoyannis, A. M Jones. 2004. Socio-Economic Status, Health and Lifestyle. *Journal*
32 *of Health Economics* 23:965-995.
33
34
35

36
37
38 Gravitt PE, Peyton CL, Alessi TQ, Wheeler CM, Coutlée F, Hildesheim A, Schiffman
39 MH, Scott DR, Apple RJ. 2000. Improved amplification of genital human
40 papillomaviruses. *J Clin Microbiol* 38:357-61.
41
42
43
44

45
46
47
48 Harper DM, Franco EL, Wheeler C, Ferris DG, Jenkins D, Schuind A, Zahaf T, Innis B,
49 Naud P, De Carvalho NS, Roteli-Martins CM, Teixeira J, Blatter MM, Korn AP, Quint
50 W, Dubin G; GlaxoSmithKline HPV Vaccine Study Group. 2004. Efficacy of a bivalent
51 L1 virus-like particle vaccine in prevention of infection with human papillomavirus
52 types 16 and 18 in young women: a randomized controlled trial. *Lancet* 364:1757-1765.
53
54
55
56
57
58
59
60

1
2
3 Harper DM, Franco EL, Wheeler CM, Moscicki AB, Romanowski B, Roteli-Martins
4 CM, Jenkins D, Schuind A, Costa Clemens SA, Dubin G; HPV Vaccine Study group.
5
6 2006. Sustained efficacy up to 4.5 years of a bivalent L1 virus-like particle vaccine
7
8 against human papillomavirus types 16 and 18: follow-up from a randomized control
9
10 trial. *Lancet* 367:1247-1255.
11
12
13

14
15
16
17 Harper MD, Paavonen J. 2008. Age for HPV vaccination. *Vaccine* 26:A7-A11.
18
19

20
21
22 Herbert J, Coffin J. 2008. Reducing patient risk for human papillomavirus infection and
23
24 cervical cancer. *J Am Osteopath Assoc* 108:65-70.
25
26
27

28
29 Hildesheim A, Herrero R, Castle PE, Wacholder S, Bratti MC, Sherman ME, Lorincz
30
31 AT, Burk RD, Morales J, Rodriguez AC, Helgesen K, Alfaro M, Hutchinson M,
32
33 Balmaceda I, Greenberg M, Schiffman M. 2001. HPV co-factors related to the
34
35 development of cervical cancer: results from a population-based study in Costa Rica. *Br*
36
37 *J Cancer* 84:1219–1226.
38
39
40

41
42
43 International Collaboration of Epidemiological Studies of Cervical Cancer, Appleby P,
44
45 Beral V, Berrington de Gonzalez A, Colin D, Franceschi S, Goodhill A, Green J, Peto J,
46
47 Plummer M, Sweetland S. 2007. Cervical cancer and hormonal contraceptives:
48
49 collaborative reanalysis of individual data for 16,573 women with cervical cancer and
50
51 35,509 women without cervical cancer from 24 epidemiological studies. *Lancet* 370:
52
53 1609-1621.
54
55
56
57
58
59
60

1
2
3
4
5
6
7
8
9
10
11
12
13
14
15
16
17
18
19
20
21
22
23
24
25
26
27
28
29
30
31
32
33
34
35
36
37
38
39
40
41
42
43
44
45
46
47
48
49
50
51
52
53
54
55
56
57
58
59
60

Leinonen M, Nieminen P, Kotaniemi-Talonen L, Malila N, Tarkkanen J, Laurila P, Anttila A. 2009. Age-specific evaluation of primary human papillomavirus screening vs conventional cytology in a randomized setting. *J Natl Cancer Inst* 101:1612-1623.

Lenselink CH, Melchers WJ, Quint WG, Hoebbers AM, Hendriks JC, Massuger LF, Bekkers RL. 2008. Sexual behaviour and HPV infections in 18 to 29 year old women in the pre-vaccine era in the Netherlands. *PLoS One* 3:e3743.

Muñoz N, Castellsagué X, Berrington de González, Gissmann L. 2006. Chapter 1: HPV in the etiology of human cancer. *Vaccine* 24 (Suppl 3):1-10.

Paavonen J, Naud P, Salmerón J, Wheeler CM, Chow SN, Apter D, Kitchener H, Castellsagué X, Teixeira JC, Skinner SR, Hedrick J, Jaisamrarn U, Limson G, Garland S, Szarewski A, Romanowski B, Aoki FY, Schwarz TF, Poppe WA, Bosch FX, Jenkins D, Hardt K, Zahaf T, Descamps D, Struyf F, Lehtinen M, Dubin G; HPV PATRICIA Study Group, Greenacre M. 2009. Efficacy of human papillomavirus (HPV) oncogenic HPV types (PATRICIA): final analysis of a double-blind, randomised study in young women. *Lancet* 374:301-314.

Schiffman MH, Castle P. 2003. Epidemiologic studies of a necessary causal risk factor: human papillomavirus infection and cervical neoplasia. *J Natl Cancer Inst* 95 (6):E2.

Schlecht NF, Franco EL, Rohan TE, Kjaer SK, Schiffman MH, Moscicki AB, Duffy SW; Marsh International Collaborative Group. 2001. Repeatability of sexual history in

1
2
3 longitudinal studies on HPV infection and cervical neoplasia: determinants of reporting
4 error at follow-up interviews. *J Epidemiol Biostat* 6:393-407.
5
6
7
8

9
10 Schroder KE, Carey MP, Vanable PA. 2003. Methodological challenges in research on
11 sexual risk behavior: II. Accuracy of self-reports. *Ann Behav Med* 26:104-123.
12
13
14
15

16
17 Schwarz TF, Spaczynski M, Schneider A, Wysocki J, Galaj A, Perona P, Poncelet S,
18 Zahaf T, Hardt K, Descamps D, Dubin G; HPV Study Group for Adult Women. 2009.
19 Immunogenicity and tolerability of an HPV-16/18 AS04-adjuvanted prophylactic
20 cervical cancer vaccine in women aged 15-55 years. *Vaccine* 27:581-587.
21
22
23
24
25
26
27
28

29 Sellors JW, Mahony JB, Kaczorowski J, Lytwyn A, Bangura H, Chong S, Lorincz A,
30 Dalby DM, Janjusevic V, Keller JL. 2000. Prevalence and predictors of human
31 papillomavirus infection in women in Ontario, Canada. Survey of HPV in Ontario
32 Women (SHOW) Group. *CMAJ* 163:503-508.
33
34
35
36
37
38
39
40

41 Sellors JW, Karwalajtys TL, Kaczorowski J, Mahony JB, Lytwyn A, Chong S, Sparrow
42 J, Lorincz A; Survey of HPV in Ontario Women Group. 2003. Incidence, clearance and
43 predictors of human papillomavirus infection in women. *CMAJ* 168:421-425.
44
45
46
47
48
49

50 Shields TS, Brinton LA, Burk RD, Wang SS, Weinstein SJ, Ziegler RG, Studentsov
51 YY, McAdams M, Schiffman M. 2004. A case-control study of risk factors for invasive
52 cervical cancer among U.S. women exposed to oncogenic types of human
53 papillomavirus. *Cancer Epidemiol Biomarkers Prev* 13:1574-1582.
54
55
56
57
58
59
60

1
2
3 Smith JS, Melendy A, Rana RK, Pimenta JM. 2008. Age-specific prevalence of
4 infection with human papillomavirus in females: a global review. *J Adolesc Health*.
5
6 43:S5-25, S25. e1-41.
7
8
9

10
11
12 Snijders PJ, Steenbergen RD, Heideman DA, Meijer CJ. 2006. HPV-mediated cervical
13 carcinogenesis: concepts and clinical implications. *J Pathol* 208:152-164.
14
15
16
17

18
19
20 Solomon D, Davey D, Kurman R, Moriarty A, O'Connor D, Prey M, Raab S, Sherman
21 M, Wilbur D, Wright T Jr, Young N; Forum Group Members; Bethesda 2001
22 Workshop. 2002. The 2001 Bethesda System: terminology for reporting results of
23 cervical cytology. *JAMA* 287:2114-2119.
24
25
26
27
28
29

30
31
32 Tonon SA, Picconi MA, Zinovich JB, Liotta DJ, Bos PD, Galuppo JA, Alonio LV,
33 Ferreras JA, Teyssié AR. 1999. Human Papillomavirus cervical infection and associated
34 risk factors in a region of Argentina with a high incidence of cervical carcinoma.
35
36
37
38
39
40
41
42
43
44
45
46
47
48
49
50
51
52
53
54
55
56
57
58
59
60

59
60
61
62
63
64
65
66
67
68
69
70
71
72
73
74
75
76
77
78
79
80
81
82
83
84
85
86
87
88
89
90
91
92
93
94
95
96
97
98
99
100
101
102
103
104
105
106
107
108
109
110
111
112
113
114
115
116
117
118
119
120
121
122
123
124
125
126
127
128
129
130
131
132
133
134
135
136
137
138
139
140
141
142
143
144
145
146
147
148
149
150
151
152
153
154
155
156
157
158
159
160
161
162
163
164
165
166
167
168
169
170
171
172
173
174
175
176
177
178
179
180
181
182
183
184
185
186
187
188
189
190
191
192
193
194
195
196
197
198
199
200
201
202
203
204
205
206
207
208
209
210
211
212
213
214
215
216
217
218
219
220
221
222
223
224
225
226
227
228
229
230
231
232
233
234
235
236
237
238
239
240
241
242
243
244
245
246
247
248
249
250
251
252
253
254
255
256
257
258
259
260
261
262
263
264
265
266
267
268
269
270
271
272
273
274
275
276
277
278
279
280
281
282
283
284
285
286
287
288
289
290
291
292
293
294
295
296
297
298
299
300
301
302
303
304
305
306
307
308
309
310
311
312
313
314
315
316
317
318
319
320
321
322
323
324
325
326
327
328
329
330
331
332
333
334
335
336
337
338
339
340
341
342
343
344
345
346
347
348
349
350
351
352
353
354
355
356
357
358
359
360
361
362
363
364
365
366
367
368
369
370
371
372
373
374
375
376
377
378
379
380
381
382
383
384
385
386
387
388
389
390
391
392
393
394
395
396
397
398
399
400
401
402
403
404
405
406
407
408
409
410
411
412
413
414
415
416
417
418
419
420
421
422
423
424
425
426
427
428
429
430
431
432
433
434
435
436
437
438
439
440
441
442
443
444
445
446
447
448
449
450
451
452
453
454
455
456
457
458
459
460
461
462
463
464
465
466
467
468
469
470
471
472
473
474
475
476
477
478
479
480
481
482
483
484
485
486
487
488
489
490
491
492
493
494
495
496
497
498
499
500
501
502
503
504
505
506
507
508
509
510
511
512
513
514
515
516
517
518
519
520
521
522
523
524
525
526
527
528
529
530
531
532
533
534
535
536
537
538
539
540
541
542
543
544
545
546
547
548
549
550
551
552
553
554
555
556
557
558
559
560
561
562
563
564
565
566
567
568
569
570
571
572
573
574
575
576
577
578
579
580
581
582
583
584
585
586
587
588
589
590
591
592
593
594
595
596
597
598
599
600
601
602
603
604
605
606
607
608
609
610
611
612
613
614
615
616
617
618
619
620
621
622
623
624
625
626
627
628
629
630
631
632
633
634
635
636
637
638
639
640
641
642
643
644
645
646
647
648
649
650
651
652
653
654
655
656
657
658
659
660
661
662
663
664
665
666
667
668
669
670
671
672
673
674
675
676
677
678
679
680
681
682
683
684
685
686
687
688
689
690
691
692
693
694
695
696
697
698
699
700
701
702
703
704
705
706
707
708
709
710
711
712
713
714
715
716
717
718
719
720
721
722
723
724
725
726
727
728
729
730
731
732
733
734
735
736
737
738
739
740
741
742
743
744
745
746
747
748
749
750
751
752
753
754
755
756
757
758
759
760
761
762
763
764
765
766
767
768
769
770
771
772
773
774
775
776
777
778
779
780
781
782
783
784
785
786
787
788
789
790
791
792
793
794
795
796
797
798
799
800
801
802
803
804
805
806
807
808
809
810
811
812
813
814
815
816
817
818
819
820
821
822
823
824
825
826
827
828
829
830
831
832
833
834
835
836
837
838
839
840
841
842
843
844
845
846
847
848
849
850
851
852
853
854
855
856
857
858
859
860
861
862
863
864
865
866
867
868
869
870
871
872
873
874
875
876
877
878
879
880
881
882
883
884
885
886
887
888
889
890
891
892
893
894
895
896
897
898
899
900
901
902
903
904
905
906
907
908
909
910
911
912
913
914
915
916
917
918
919
920
921
922
923
924
925
926
927
928
929
930
931
932
933
934
935
936
937
938
939
940
941
942
943
944
945
946
947
948
949
950
951
952
953
954
955
956
957
958
959
960
961
962
963
964
965
966
967
968
969
970
971
972
973
974
975
976
977
978
979
980
981
982
983
984
985
986
987
988
989
990
991
992
993
994
995
996
997
998
999
1000

1
2
3 Venuti A, Badaracco G, Sedati A, Carbini R, Marcante ML. 1994. Determinants of
4 human papillomavirus types 16 and 18 infections in the lower femal genital tract in an
5 Italian population. *Eur J Gynaec Oncol* 15:205-210.
6
7
8
9

10
11
12 Villa LL, Costa RL, Petta CA, Andrade RP, Ault KA, Giuliano AR, Wheeler CM,
13 Koutsky LA, Malm C, Lehtinen M, Skjeldestad FE, Olsson SE, Steinwall M, Brown
14 DR, Kurman RJ, Ronnett BM, Stoler MH, Ferenczy A, Harper DM, Tamms GM, Yu
15 J, Lupinacci L, Railkar R, Taddeo FJ, Jansen KU, Esser MT, Sings HL, Saah AJ, Barr E.
16
17 2005. Prophylactic quadrivalent human papillomavirus (types 6, 11, 16, and 18) L1
18 virus-like particle vaccine in young women: a randomised double-blind placebo-
19 controlled multicentre phase II efficacy trial. *Lancet Oncol.* 6:271-278.
20
21
22
23
24
25
26
27
28
29

30
31 Villa LL, Costa RL, Petta CA, Andrade RP, Paavonen J, Iversen OE, Olsson SE, Høye
32 J, Steinwall M, Riis-Johannessen G, Andersson-Ellstrom A, Elfgren K, Krogh G,
33 Lehtinen M, Malm C, Tamms GM, Giacoletti K, Lupinacci L, Railkar R, Taddeo FJ,
34 Bryan J, Esser MT, Sings HL, Saah AJ, Barr E. 2006. High sustained efficacy of a
35 prophylactic quadrivalent human papillomavirus types 6/11/16/18 L1 virus-like particle
36 vaccine through 5 years of follow-up. *Br J Cancer* 95:1459-1466.
37
38
39
40
41
42
43
44
45
46
47

48 Walboomers JM, Jacobs MV, Manos MM, Bosch FX, Kummer JA, Shah KV, Snijders
49 PJ, Peto J, Meijer CJ, Muñoz N. 1999. Human papillomavirus is a necessary cause of
50 invasive cervical cancer worldwide. *J Pathol* 189:12-9.
51
52
53
54
55
56

57 Winer RL, Lee SK, Hughes JP, Adam DE, Kiviat NB, Koutsky LA. 2003. Genital
58 human papillomavirus infection: incidence and risk factors in a cohort of female
59
60

1
2
3 university students. Am J Epidemiol 157: 218-26. Erratum in: Am J Epidemiol 2003
4
5 157: 858.
6
7
8
9

10 World Health Organization, 2006. Initiative for vaccine research (IVR): human
11 papillomavirus. World Health Organization Web site. Available at:
12 http://www.who.int/vaccine_research/diseases/viral_cancers/en/index3.html. (last
13
14
15
16
17
18
19
20
21
22
23
24
25
26
27
28
29
30
31
32
33
34
35
36
37
38
39
40
41
42
43
44
45
46
47
48
49
50
51
52
53
54
55
56
57
58
59
60
accessed: October 22, 2009).

For Peer Review

Table I. Characteristics of the 94 patients according to HPV DNA tests results.

Variable	HR-Positive N* (%)	Negative N* (%)	p-value
N of patients	54 (57)	40 (43)	
Age			
mean (sd)	35 (10.2)	39 (11.2)	0.112
Education			0.755
Primary-Secondary school	15 (60)	10 (40)	
High school	27 (54)	23 (46)	
University	12 (63)	7 (37)	
Marital status			<0.0001
Married-Living together-Widow	13 (33)	26 (67)	
Never married-Separated/Divorced	40 (74)	14 (26)	
Age at first sexual intercourse			0.003
mean (sd)	17.9 (2.4)	20.3 (4.9)	
Number of partners			0.004
mean (sd)	5.3 (3.8)	3.0 (3.3)	
Number of pregnancies			0.209
mean (sd)	1 (1.5)	1.3 (1.3)	
Number of childbirth			0.080
media (sd)	0.6 (0.8)	1 (1.2)	
Estroprogestinic contraceptive use			0.128
Yes	33 (63)	19 (37)	
No	18 (47)	20 (53)	
Condom contraceptive use			0.172
Yes	14 (70)	6 (30)	
No	37 (53)	33(47)	
N°sexual intercourse			0.105
Mean (sd) per months	7.9 (6.5)	5.7 (5.7)	
Smoking			0.043
Yes	33 (67)	16 (33)	
No	21 (47)	24 (53)	
Age at first cigarette			0.072
media (sd)	16.8 (2.8)	18.5 (3.0)	
Years of smoking			0.008
media (sd)	9.7 (11.1)	4.3 (7.2)	
Number of smoked cigarettes			0.014
media (sd)	7.3 (7.7)	3.6 (6.1)	
Alcohol consumption			0.026
Yes (regular and occasional drinkers)	23 (26)	8 (74)	
No	31 (50)	31 (50)	
Pap Test knowledge			0.178
Yes	54 (59)	38 (41)	
No	0 (0)	2 (100)	
Pap test frequency			0.930
Every 1-2 years	44 (58)	32 (42)	
Occasionally	7 (58)	5 (42)	
Never	3 (50)	3 (50)	

* the sum may not add to the total because of missing values.

Table II. Predictors of HR-HPV infection in women: univariate and multivariate logistic regression analysis.

Variables	Univariate OR	95% CI	p-value	Multivariate OR	95% CI	p-value
Age*	0,97	0,93-1,00	0,116			
Education						
Primary-Secondary	0,87	0,26-2,99	0,831			
High School	0,69	0,23-2,03	0,494			
University	1,00	-	-			
Marital Status						
Married/Living together/Widow	1,00	-	<0,0001	1,00	-	0,029
Never married-Separated/Divorced	5,71	2,32-14,08		3,38	1,14-10,12	
Age at first sexual intercourse*	0,82	0,71-0,95	0,007	0,84	0,71-1,00	0,055
Number of partners			<0,0001			
≤ 3	1,00	-		1,00	-	0,092
> 3	5,32	2,09-13,95		2,57	0,86-7,71	
Smoking						
No	1,00	-	0,044	1,00	-	0,131
Yes	2,36	1,02-5,44		2,24	0,79-6,39	
Alcohol consumption			0,029			
No	1,00	-		1,00	-	0,117
Yes (regular and occasional drinkers)	2,88	1,12-7,41		2,56	0,79-8,33	
Estroprogestinic contraceptive use			0,13			
Yes	1,93	0,82-4,52				
No	1,00	-				
Condom use						
Yes	0,48	0,17-1,39	0,178			
No	1,00	-				

* considered as continuous variables

1
2
3
4
5
6
7
8
9
10
11
12
13
14
15
16
17
18
19
20
21
22
23
24
25
26
27
28
29
30
31
32
33
34
35
36
37
38
39
40
41
42
43
44
45
46
47
48
49
50
51
52
53
54
55
56
57
58
59
60

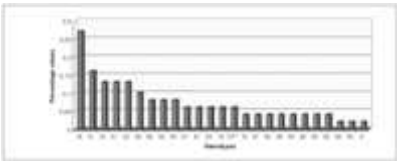


Fig. 1. Distribution of HPV genotypes detected by Linear Array Genotyping Test in the Italian women.
* CP6108

8x3mm (600 x 600 DPI)

For Peer Review