



HAL
open science

Simultaneous determination of type A, B, and D trichothecenes and their occurrence in cereals and cereal products

Christoph Gottschalk, Jörg Barthel, Gabriele Engelhardt, Johann Michael Bauer, Karsten Meyer

► **To cite this version:**

Christoph Gottschalk, Jörg Barthel, Gabriele Engelhardt, Johann Michael Bauer, Karsten Meyer. Simultaneous determination of type A, B, and D trichothecenes and their occurrence in cereals and cereal products. *Food Additives and Contaminants*, 2009, 26 (09), pp.1273-1289. 10.1080/02652030903013260 . hal-00573874

HAL Id: hal-00573874

<https://hal.science/hal-00573874v1>

Submitted on 5 Mar 2011

HAL is a multi-disciplinary open access archive for the deposit and dissemination of scientific research documents, whether they are published or not. The documents may come from teaching and research institutions in France or abroad, or from public or private research centers.

L'archive ouverte pluridisciplinaire **HAL**, est destinée au dépôt et à la diffusion de documents scientifiques de niveau recherche, publiés ou non, émanant des établissements d'enseignement et de recherche français ou étrangers, des laboratoires publics ou privés.



Simultaneous determination of type A, B, and D trichothecenes and their occurrence in cereals and cereal products

Journal:	<i>Food Additives and Contaminants</i>
Manuscript ID:	TFAC-2008-327.R1
Manuscript Type:	Original Research Paper
Date Submitted by the Author:	09-Apr-2009
Complete List of Authors:	Gottschalk, Christoph; Technische Universität München, Institute of Animal Hygiene Barthel, Jörg; Bavarian Health and Food Safety Authority, Oberschleißheim Engelhardt, Gabriele; Bavarian Health and Food Safety Authority, Oberschleißheim Bauer, Johann; Technische Universität München, Institute of Animal Hygiene Meyer, Karsten; Technische Universität München, Institute of Animal Hygiene
Methods/Techniques:	Chromatography - LC/MS
Additives/Contaminants:	trichothecenes
Food Types:	Cereals and grain

SCHOLARONE™
Manuscripts

1
2
3
4
5
6
7
8
9
10
11
12
13
14
15
16
17
18
19
20
21
22
23
24
25
26
27
28
29
30
31
32
33
34
35
36
37
38
39
40
41
42
43
44
45
46
47
48
49
50
51
52
53
54
55
56
57
58
59
60

Simultaneous determination of type A, B, and D trichothecenes and their occurrence in cereals and cereal products

Christoph Gottschalk¹, Jörg Barthel², Gabriele Engelhardt², Johann Bauer¹, Karsten Meyer¹

¹ Technische Universität München, Institute of Animal Hygiene, Weihenstephaner Berg 3, 85354 Freising, Germany; ² Bavarian Health and Food Safety Authority, Veterinärstraße 2, 85764 Oberschleißheim, Germany

Running title: Determination of type A, B and D trichothecenes by LC-MS/MS

Corresponding author: Christoph Gottschalk, Technische Universität München, Institute of Animal Hygiene, Weihenstephaner Berg 3, 85354 Freising, Germany.

Tel. +49-8161-715503, Fax +49-8161-714516; e-mail: christoph.gottschalk@wzw.tum.de

Abbreviations: 3-acDON, 3-acetyl-deoxynivalenol; 15-acDON, 15-acetyl-deoxynivalenol; C13-DON, ¹³C₁₅-deoxynivalenol; C13-T-2, ¹³C₂₄-T-2 toxin; DAS, 4,15-diacetoxyscirpenol; DacVOL, 4,15-diacetylverrucarol; DON, deoxynivalenol; EC, European Commission; FX, fusarenon-X; LOD, limit of detection; LOQ, limit of quantification; MAS, 15-monoacetoxyscirpenol; NEO, neosolaniol; NIV, nivalenol; RA, roridin A; SG, satratoxin G; SH, satratoxin H; TDI, tolerable daily intake; VA, verrucarol A; VOL, verrucarol

Abstract

A sensitive LC-MS/MS method for the simultaneous determination of type A, B, and D trichothecenes in cereals is presented. The limits of detection ranged between $0.1 \mu\text{g kg}^{-1}$ and $0.7 \mu\text{g kg}^{-1}$ for all analytes. The method was applied to 289 representatively drawn samples of wheat, rye, and oat products. Ninety-four percent of the wheat samples ($n=130$), 95% of the rye samples ($n=61$), and 100% of the oat samples ($n=98$) were contaminated with the type A trichothecenes T-2 and HT-2 toxin. Median levels of T-2/HT-2 (sum of the toxins) were $0.91 \mu\text{g kg}^{-1}$, $0.53 \mu\text{g kg}^{-1}$, and $8.2 \mu\text{g kg}^{-1}$, respectively. Highest levels were found in wheat bran ($24 \mu\text{g kg}^{-1}$), rye kernels ($3.1 \mu\text{g kg}^{-1}$), and oat flakes ($85 \mu\text{g kg}^{-1}$). All wheat and rye samples and 75% of the oat samples were contaminated with the type B trichothecene deoxynivalenol. Median levels of this toxin were $23 \mu\text{g kg}^{-1}$, $15 \mu\text{g kg}^{-1}$, and $0.53 \mu\text{g kg}^{-1}$, respectively. Highest levels were found in wheat bran ($1160 \mu\text{g kg}^{-1}$), rye kernels ($288 \mu\text{g kg}^{-1}$), and oat flakes ($55 \mu\text{g kg}^{-1}$). The type B trichothecene nivalenol was detected in 67% of the wheat samples, in 3% of the rye samples, and in 24% of the oat samples with highest levels in wheat bran ($96 \mu\text{g kg}^{-1}$), rye kernels ($1.8 \mu\text{g kg}^{-1}$), and in oat flakes ($17 \mu\text{g kg}^{-1}$), respectively. Levels of other type A and B trichothecenes played a minor role, although the rates of contamination were often high. Neither macrocyclic type D trichothecenes (satratoxin G and H, verrucarin A, roridin A) nor the type A trichothecenes diacetylverrucarol and verrucarol were detected in any of the samples.

Keywords: mycotoxin / trichothecenes / cereals / deoxynivalenol / T-2 toxin / satratoxin

Introduction

Three to four hundred secondary fungal metabolites have been recognized as mycotoxins (Bennett et al. 2003). Of these almost 150 belong to the large group of trichothecenes. These are cyclic sesquiterpenoids characterized by a 12,13-epoxide ring (WHO 1990). Trichothecenes are generally known as cytotoxic and immunosuppressive mycotoxins. They are mainly produced by certain species of *Fusarium*, as well as by species of the genera *Myrothecium*, *Stachybotrys*, *Trichothecium*, and *Trichoderma*. Trichothecenes are divided into four groups according to their chemical structures (Ueno 1983a). Type A trichothecenes are characterized by an oxygen function different from a carbonyl group at the C-8 position while type B trichothecenes possess a carbonyl function at this position. Type C trichothecenes have a second epoxide group at C-7,8 or C-9,10 whereas type D trichothecenes contain a macrocyclic ring between C-4 and C-15 (Figure 1). *F. sporotrichioides* and *F. langsethiae* are the main producers of type A trichothecenes like T-2 and HT-2 toxin in European cereals (Torp et al. 2004, Thrane et al. 2004). Oats and maize are considered to be most contaminated with this group of trichothecenes. Type B trichothecenes like deoxynivalenol (DON) are primarily produced by *F. graminearum* and *F. culmorum* which play a major role in maize, wheat and rye (SCOOP 2003). Various multi-methods for the determination of these toxins in cereals have been developed in the past few years (Lagana et al. 2003, Berthiller et al. 2005, Biselli et al. 2005, Klötzel et al. 2005). The macrocyclic type D trichothecenes are metabolites of *Myrothecium* spp. (e.g. roridin A, verrucarin A) and *Stachybotrys* spp. (e.g. satratoxin G and H; Ueno 1983a). While type A and B trichothecenes are commonly known as contaminants of food and feed, it is assumed that macrocyclic trichothecenes rarely occur in these matrices (WHO 1990, Krska et al. 2001). However, these toxins have occasionally been determined in hay or straw and were identified as causative agents of stachybotryotoxicosis (Jarvis et al. 1986), a severe disease that primarily affects horses. During the last years, macrocyclic trichothecenes have attracted more attention as indoor pollutants. They are suspected to be responsible for several adverse health effects in humans living or working in *Stachybotrys*-affected environments (Johanning et al. 1996, Jarvis et al. 1998, Gottschalk et al. 2008). Regarding food, there are only a few studies

1
2
3 focussing on these analytes. In 1980, Stack and Eppley first described a method for cereal grains
4
5 with LODs between 100 and 200 $\mu\text{g kg}^{-1}$, but no naturally contaminated samples were analyzed
6
7 (Stack and Eppley 1980). Recently published and more sensitive methods for type A, B and D
8
9 trichothecenes in foodstuffs (Gentili et al. 2007, Stecher et al. 2007) comprised no satratoxins.
10
11 Furthermore, only a very small number of samples was analyzed.
12
13

14
15
16 Maximum levels for trichothecenes in cereals and corn currently only exist for DON
17
18 (Commission Regulation (EC) No 1881/2006 and No 1126/2007). According to mean intake
19
20 data provided by a study from the Scientific Cooperation, the dietary exposure to T-2 and HT-2
21
22 may be critical. Especially in the group of infants and children the temporary tolerable daily
23
24 intake (tTDI) for the sum of these toxins could be exceeded by more than fivefold (SCOOP
25
26 2003). The EC thus requested more occurrence data of these toxins in order to establish an
27
28 appropriate maximum level (Commission Regulation (EC) No 1881/2006).
29
30
31

32
33 A sensitive LC-MS/MS multi-trichothecene method was developed in this study. Data regarding
34
35 the contamination rates and levels of type A, B and the (at least in food) hardly studied type D
36
37 trichothecenes in representatively drawn wheat, rye and oat samples are presented. Furthermore,
38
39 the levels of mycotoxin contamination are compared and evaluated with respect to the possible
40
41 health risks for the consumer.
42
43
44

45 46 **Materials and methods**

47 *Samples*

48
49 Sampling was performed according to Commission Regulation (EC) No 401/2006. Samples
50
51 (total n=289) of wheat products (n=130), rye products (n=61), and oat products (n=98) were
52
53 collected from grain milling factories or from wholesale in Bavaria. Products under study
54
55 included kernels, flour, semolina, bran, and flakes. A small number of these samples (n=18)
56
57 were oat- (n=13) or wheat-containing (n=5) infant food. All samples were of German origin
58
59 from the crop years 2005 and 2006. The grain kernel samples were fully processed (including
60

1
2
3 cleaning and dehulling steps), suitable for direct consumption. In addition to these food grain
4
5 samples, 17 samples of oats of feed quality were included in this study.
6
7

8 9 *Chemicals and reagents*

10 Standards of the type A trichothecenes T-2 toxin, HT-2 toxin, 4,15-diacetoxyscirpenol, 15-
11
12 monoacetoxyscirpenol, T-2 triol, T-2 tetraol, neosolaniol, 4,15-diacetylverrucarol, and
13
14 verrucarol, standards of the type B trichothecenes deoxynivalenol, nivalenol, fusarenon-X, 3-
15
16 and 15-acetyldeoxynivalenol as well as standards of the type D trichothecenes roridin A and
17
18 verrucarin A were purchased from Sigma (Deisenhofen, Germany). ¹³C-stable isotope
19
20 standards for DON and T-2 toxin were from Biopure (Coring System Diagnostix, Gernsheim,
21
22 Germany). Acetonitrile for extraction (HPLC grade) was purchased from Riedel-de Haën
23
24 (Deisenhofen, Germany). Methanol (Riedel-de Haën, Deisenhofen, Germany) and ammonium
25
26 formate (Fluka, Deisenhofen, Germany) were used in LC-MS quality. Water was purified on a
27
28 milli-Q water purification system (Millipore, Schwalbach, Germany).
29
30
31
32
33

34
35 Standards of the type D trichothecenes satratoxin G and H were produced in our laboratory. A
36
37 toxigenic strain of *Stachybotrys chartarum* was cultivated on rice (Jarvis et al. 1986). After a
38
39 period of eight weeks at room temperature, cultures were extracted with acetonitrile/water 84/16
40
41 (v/v) and the extracts were cleaned using MycoSep[®] #226 columns. The purified extracts were
42
43 fractionated by semi-preparative HPLC with MS/MS-detection using a T-fitting to collect the
44
45 fractions. A Beckman ultrasphere column (ODS, 150 × 4.6 mm, 5 μm) and a binary linear
46
47 gradient of methanol (pump A) and deionized water (pump B) was used for separation of the
48
49 toxins at a flow rate of 1000 μl/min: 0 min 90% B, 40 min 0% B, 41 min 90% B, 45 min 90%
50
51 B. The injection volume was 200 μl. The fractions were evaporated to dryness using a gentle
52
53 stream of nitrogen at 40 °C. The crystalline residues were then dissolved and stored in
54
55 acetonitrile. The standards were verified and quantified using reference substances which were
56
57 kindly provided by Manfred Gareis (Max-Rubner Institute, Kulmbach, Germany).
58
59
60

Sample preparation

The complete aggregate samples (between 1 and 10 kg) were finely ground and homogenized before analysis. The sub-samples (20 g) were extracted with 80 ml acetonitrile/water 84/16 (v/v) by blending at high speed (10000 rpm, 3 min) with an Ultra Turrax homogenizer (IKA-Labortechnik, Staufen, Germany). For some infant food samples the double volume of extraction solvent was used because of their high swelling properties. The extracts were centrifuged (6000g, 10 min) and aliquots of 8 ml were purified with MycoSep[®] columns (# 226, Coring System Diagnostix, Germany) according to the manufacturer's instructions. The MycoSep[®] method has successfully been applied by many other working groups (Berthiller et al. 2005, Biselli et al. 2005, Klötzel et al. 2005). As also observed by Stecher et al. (2007), the commonly used MycoSep[®] trichothecene column #227 was not suited for type D trichothecenes. Their high charcoal content led to very low recoveries (data not shown). 4 ml of the extracts were evaporated to dryness with a gentle stream of nitrogen at a temperature of 40 °C (Barkey, Leopoldshöhe, Germany). For LC-MS/MS analysis the residues were dissolved in 1 ml of methanol/deionized water 5/95 (v/v) and were filtered through a 0.45 µm PTFE syringe filter (Supelco, Deisenhofen, Germany).

LC-MS/MS instrumentation and parameters

LC-MS/MS analysis was performed with a high pressure gradient HPLC apparatus from Shimadzu (Duisburg, Germany) and a triple quadrupole mass spectrometer API 4000 from Applied Biosystems (Darmstadt, Germany). The LC system consisted of an autosampler (SIL HT-C), two pumps (LC-10ADVP), a degasser (DGU-14A), and a column oven (CTO-10ACVP). A Synergi[™] polar-RP[®] column, 150 x 2 mm, 4 µm (Phenomenex, Aschaffenburg, Germany) was used for the chromatographic separation of the analytes. The binary linear gradient consisted of eluent A (methanol + 5 mmol/l ammonium formate) and eluent B (deionized water) with a flow rate of 0.4 ml/min: 0 min 95% B, 11 min 95% B, 22 min 35% B, 26 min 35% B, 27 min 95% B, 35 min 95% B. It was not possible to analyze T-2 tetraol and NIV in a single run due to similar retention times and ionization with different polarities. T-2

1
2
3 tetraol was determined in a second run with the following linear gradient: 0 min 70% B, 3 min
4
5 70% B, 5 min 30% B, 11 min 30% B, 11.5 min 70% B, 13 min 70% B. The column oven
6
7 temperature was maintained at 40 °C and the injection volume was 20 µl.
8
9

10
11 MS experiments were carried out in positive and negative electrospray ionization (ESI) mode by
12 separating the method in periods with the proper polarity (Figure 2). The source temperature
13 was set at 500 °C and the nitrogen pressure of the nebulizer gas (GS1) was optimized at 55 psi.
14 The collision gas (CAD-gas, nitrogen) was used in high mode (CAD=9). The pressure of the
15 curtain gas for T-2 tetraol was set at 25 psi, the heating gas at 55 psi, and the ion spray voltage
16 at 3000 V. For the other toxins best sensitivity was achieved with 20 psi, 50 psi and 4500 V,
17 respectively. In positive ionization mode, all analytes were measured as adduct ions of
18 ammonium $[M+NH_4]^+$. The toxins were identified in multiple reaction monitoring mode
19 (MRM) by two specific fragment ions of one precursor ion according to Commission Decision
20 2002/657/EC. The MRM-transitions, de-clustering potentials (DP), collision energies (CE), cell
21 exit potentials (CXP), and further parameters for each toxin are shown in Table 1. The value of
22 the entrance potential (EP) was +10 V or -10 V for all analytes depending on their ionization
23 polarity.
24
25
26
27
28
29
30
31
32
33
34
35
36
37
38
39
40
41

42 *Method validation*

43
44 The method performance parameters were determined according to DIN 32645 (1994). The
45 trichothecene stock solution was diluted into 25 concentrations between 250 ng ml⁻¹ and
46 0.005 ng ml⁻¹. These standard dilutions were measured to determine the linearity of the method,
47 the correlation as well as the limits of detection (LODs) and of quantification (LOQs). The latter
48 were also calculated using the signal-to-noise (S/N) approach (S/N=3 and S/N=9, respectively).
49 The repeatability of the method was checked by five-fold measurements of the toxin standards
50 at two concentrations (1.0 and 10 ng ml⁻¹).
51
52
53
54
55
56
57
58
59
60

1
2
3 Recovery experiments were carried out after artificial contamination of homogenized, blank
4 samples of wheat flour, rye flour, and ground oat flakes on three levels ($1.0 \mu\text{g kg}^{-1}$, $10 \mu\text{g kg}^{-1}$,
5 and $50 \mu\text{g kg}^{-1}$) with five replicates each. The samples were fortified with a trichothecene
6 standard mixture before extraction.
7
8
9
10

11
12
13
14 The accuracy of the method was checked by participation at an interlaboratory test for DON
15 (DLA, Ahrensburg, Germany) and intra laboratory comparisons between the results of LC-
16 MS/MS and HPLC-FLD (post-column derivatization) measurements according to the method
17 described by Engelhardt et al. (2006). Comparison measurements for T-2 and HT-2 in oat flakes
18 were conducted with another laboratory.
19
20
21
22
23
24

25 26 27 *Mycotoxin quantification*

28
29 Quantification of most of the toxins was done by external calibration on five levels (0, 1.0, 10,
30 50, 200 ng ml^{-1}). The ^{13}C -stable isotope standards ^{13}C -DON and ^{13}C -T-2 toxin were used for
31 compensation of matrix suppression effects, which mainly occurred in wheat samples. After
32 evaporation of the purified extracts, the residues were dissolved in eluent containing the ^{13}C -
33 standards at a concentration of 10ng ml^{-1} . To compensate for matrix effects which were also
34 observed for NIV and T-2 tetraol, these two toxins were quantified by matrix assisted
35 calibration. Therefore, extracts of blank wheat flour, rye flour, and ground oat flakes were used
36 for the dilution of the toxin standards. Levels of toxins between the LOD and LOQ were
37 calculated with half LOQ, at which the S/N-values were applied. All results were corrected by
38 mean recovery rates for each toxin and matrix referring to the results of the recovery
39 experiments.
40
41
42
43
44
45
46
47
48
49
50
51
52
53
54

55 **Results**

56 *Method performance characteristics*

57
58 According to DIN 32645 LODs/LOQs between $0.09/0.29 \mu\text{g kg}^{-1}$ for DAS and $0.70/2.2 \mu\text{g kg}^{-1}$
59 for NIV were calculated. Using the signal-to-noise approach, these limits were mostly lower
60

1
2
3 (Table 2). The repeatability (n=5) as RSD was between 1.8% and 11% at a concentration of
4
5 1 ng ml⁻¹. At a level of 10 ng ml⁻¹, all RSDs were between 0.5% and 4.4%. The method was
6
7 linear between the LODs and 250 µg kg⁻¹ except for HT-2, VOL, and SH (LOD - 200 µg kg⁻¹)
8
9 with correlation coefficients (linear regression) of $r > 0.9980$ (Table 2).
10
11

12
13
14 The average recovery obtained with this method ranged between 60 and 108% for all toxins and
15
16 matrices with RSDs between 1.3% and 17%. The lowest recoveries were observed for NIV and
17
18 T-2 tetraol (Table 3). The accuracy of the method was confirmed by participation in an
19
20 interlaboratory test for DON and comparison measurements for DON and T-2/HT-2. The results
21
22 showed a satisfactory accordance (Table 4). Finally, the results of the validation measurements
23
24 were considered to comply with the requirements of the EC (Commission Regulation (EC) No
25
26 401/2006).
27
28

29 30 31 *Trichothecene contamination of wheat samples*

32
33 The samples (n=130) were analyzed for 18 type A, B and D trichothecenes. The levels of T-
34
35 2/HT-2 in all wheat samples ranged between LOD and 24 µg kg⁻¹ with a contamination rate of
36
37 94% and a median contamination of 0.91 µg kg⁻¹. The 95th percentile value was 6.4 µg kg⁻¹
38
39 (Table 5). Hereby, a correlation between T-2 and HT-2 levels was observed ($R^2=0.7995$). The
40
41 levels of HT-2 were about sevenfold as high as those of T-2 (Figure 3). As compared in
42
43 Figure 4, the highest levels were found in wheat bran. Levels of contamination of the other
44
45 commodities of wheat are also listed in Table 5. T-2 tetraol occurred in 53% of all samples with
46
47 values between LOD and 83 µg kg⁻¹ in a wheat bran sample. The median level, however, was
48
49 only 0.15 µg kg⁻¹. Other type A trichothecenes like T-2 triol, NEO and DAS were detected with
50
51 lower frequency and in smaller amounts (Table 5). The rate of contamination with MAS was
52
53 92% but the levels were consistently low (median 0.11 µg kg⁻¹, maximum value 5.9 µg kg⁻¹ in
54
55 wheat bran). VOL and DacVOL were not detected above their LODs.
56
57
58
59
60

1
2
3 All wheat samples were contaminated with DON between 0.06 and 1160 $\mu\text{g kg}^{-1}$. The median
4 contamination was 23 $\mu\text{g kg}^{-1}$ with a 95th percentile value of 162 $\mu\text{g kg}^{-1}$ (Table 5). Again, the
5 highest value was found in bran (Figure 4). However, this was the only sample to exceed the
6 maximum level set by the EC (Commission Regulation No 1881/2006). Sixty-seven percent of
7 the samples were contaminated with NIV at a median level of 1.8 $\mu\text{g kg}^{-1}$ and a maximum level
8 of 96 $\mu\text{g kg}^{-1}$ in wheat bran. The 3- and 15-acetyl metabolites of DON were detected in 52 and
9 72% of all wheat samples with median values of only 0.21 $\mu\text{g kg}^{-1}$ and 0.17 $\mu\text{g kg}^{-1}$,
10 respectively. The highest levels of 15 $\mu\text{g kg}^{-1}$ and 26 $\mu\text{g kg}^{-1}$ were also found in wheat bran
11 (Table 5). 15-acDON-levels were about 2% of the DON-levels (Figure 3). No type D
12 trichothecenes were detected above their LODs between 0.02 $\mu\text{g kg}^{-1}$ for RA and 0.15 $\mu\text{g kg}^{-1}$
13 for SH.
14
15
16
17
18
19
20
21
22
23
24
25
26
27
28

29 *Trichothecene contamination of rye samples*

30 Rye samples (n=61) were less contaminated with trichothecenes, even though the rates of
31 contamination hardly differed from those of wheat. The median level of T-2/HT-2 in all rye
32 samples was 0.53 $\mu\text{g kg}^{-1}$ with a the 95th percentile value of 1.8 $\mu\text{g kg}^{-1}$. The rate of
33 contamination was 95% (Table 6) and a maximum level of 3.1 $\mu\text{g kg}^{-1}$ was measured in rye
34 flour (Figure 4). Higher levels (median 2.0 $\mu\text{g kg}^{-1}$ and 95th percentile value 6.4 $\mu\text{g kg}^{-1}$) were
35 observed for T-2 tetraol with a rate of contamination of 79% and a maximum level of 8.1 $\mu\text{g kg}^{-1}$
36 in rye kernels (Table 6). DAS, VOL and DacVOL were not detected and the levels of MAS
37 and NEO were very low. Due to the low T-2 and HT-2 levels, the correlation between these two
38 toxins was less evident than in wheat or oats (Figure 3).
39
40
41
42
43
44
45
46
47
48
49
50
51
52

53 However, all samples were contaminated with DON. The median contamination with this toxin
54 was 15 $\mu\text{g kg}^{-1}$ and the 95th percentile value was 92 $\mu\text{g kg}^{-1}$. The highest value of 288 $\mu\text{g kg}^{-1}$
55 was found in rye kernels (Table 6). 3-acDON and 15-acDON were detected with mean levels of
56 lower than 1 $\mu\text{g kg}^{-1}$ in 59% and 80% of the samples. It could be observed that the amounts of
57
58
59
60

1
2
3 DON were about 30 times as high as the levels of 15-acDON (Figure 3). NIV and FX levels
4
5 were almost all below the LOD. No type D trichothecenes were detected.
6
7

8 9 10 *Trichothecene contamination of oat samples*

11 All oat samples (n=98) were contaminated with T-2/HT-2 between 0.04 and 85 $\mu\text{g kg}^{-1}$
12 (Table 7). The median and 95th percentile value were 8.2 $\mu\text{g kg}^{-1}$ and 50 $\mu\text{g kg}^{-1}$. The highest
13
14 levels were measured in fine oat flakes (Figure 4). All five samples (5.1%) which exceeded a
15
16 level of 50 $\mu\text{g kg}^{-1}$ for the sum of T-2/HT-2 were part of this commodity. The T-2 levels in oats
17
18 were about half the levels of HT-2 (Figure 3). Within the group of type A trichothecenes, T-2
19
20 tetraol also played a major role (rate of contamination 90%). The median level was 6.4 $\mu\text{g kg}^{-1}$
21
22 (95th percentile value: 25 $\mu\text{g kg}^{-1}$). The highest value of 85 $\mu\text{g kg}^{-1}$ was measured in a baby food
23
24 sample (Table 7). For T-2 triol, NEO, DAS, and MAS, levels of at most 2.7 $\mu\text{g kg}^{-1}$ were
25
26 determined. VOL and DacVOL were not detected in any sample.
27
28
29
30
31
32

33 The contamination rate of DON was 74% of all oat samples. The median value was 0.53 $\mu\text{g kg}^{-1}$
34 and the 95th percentile 11 $\mu\text{g kg}^{-1}$. A maximum value of 55 $\mu\text{g kg}^{-1}$ was determined in fine oat
35
36 flakes (Table 7). DON-levels of different commodities of oats are compared in Figure 4. 3-
37
38 acDON and 15-acDON were measured each with a rate of contamination of 28% in all oat
39
40 samples and with maximum levels of 8.2 $\mu\text{g kg}^{-1}$ and 1.4 $\mu\text{g kg}^{-1}$. These levels were too low to
41
42 observe a good correlation with DON (Figure 3). NIV occurred in 24% of the oat samples with
43
44 a maximum level of 17 $\mu\text{g kg}^{-1}$ found in fine oat flakes (Table 7). The highest contamination
45
46 with FX (6.1% positive samples) was below 1.0 $\mu\text{g kg}^{-1}$. Again, no type D trichothecenes were
47
48 detected.
49
50
51
52
53
54

55 *Trichothecene contamination of infant food*

56 In 100% of the oat-containing baby food samples (n=13) and in 80 % of the wheat-containing
57
58 samples (n=5) T-2/HT-2 was detected. The median values were 6.0 $\mu\text{g kg}^{-1}$ and 0.36 $\mu\text{g kg}^{-1}$,
59
60 respectively (Figure 4). The highest value of 23 $\mu\text{g kg}^{-1}$ was found in an oat porridge powder

1
2
3 which was concurrently contaminated with 85 $\mu\text{g kg}^{-1}$ T-2 tetraol (Table 7). Otherwise, the
4
5 levels of T-2 tetraol were low just like those of the other analytes. In Figure 4, also the DON
6
7 levels of oat and wheat-containing infant food were compared to the other food commodities.
8
9 DON was detected in 54% and 100 % of these samples with median values of 0.17 $\mu\text{g kg}^{-1}$ and
10
11 9.9 $\mu\text{g kg}^{-1}$ (Table 5). The highest level of 24 $\mu\text{g kg}^{-1}$ was detected in a semolina powder (Table
12
13 5). 3-acDON and 15-acDON were detected with levels below 3.2 $\mu\text{g kg}^{-1}$. Three samples
14
15 contained NIV with maximal 8.8 $\mu\text{g kg}^{-1}$ (Table 5) and only one sample FX (0.18 $\mu\text{g kg}^{-1}$, Table
16
17 7).

20 *Trichothecene contamination of feed oats*

21
22 Oats of feed quality (n=17) were contaminated at a much higher level with type A and B
23
24 trichothecenes due to the fact that the samples were husked oat kernels. The toxin levels are
25
26 usually reduced about 90% by de-husking the grains (Scudamore et al. 2007). Maximum values
27
28 of 531 $\mu\text{g kg}^{-1}$ T-2/HT-2 and 654 $\mu\text{g kg}^{-1}$ T-2 tetraol in the same sample were measured. The
29
30 median/95th percentile values were 162 $\mu\text{g kg}^{-1}$ /356 $\mu\text{g kg}^{-1}$ and 146 $\mu\text{g kg}^{-1}$ /331 $\mu\text{g kg}^{-1}$,
31
32 respectively (rates of contamination 100%). T-2 tetraol again contributed considerably to the
33
34 total type A trichothecene burden. All samples contained DAS (median/95th percentile value:
35
36 0.61 $\mu\text{g kg}^{-1}$ /3.2 $\mu\text{g kg}^{-1}$), MAS (1.6 $\mu\text{g kg}^{-1}$ /6.3 $\mu\text{g kg}^{-1}$), and NEO (4.7 $\mu\text{g kg}^{-1}$ /17 $\mu\text{g kg}^{-1}$). For
37
38 NEO, comparatively high values up to 28 $\mu\text{g kg}^{-1}$ were determined. Thereby, a strong
39
40 correlation was also observed between the levels of T-2 and NEO. In this matrix, the levels were
41
42 high enough to not be influenced by the LOQ of the method. The NEO-level was about 15% of
43
44 the one of T-2 ($R^2=0.9496$). No VOL or DacVOL were measured.
45
46
47
48
49

50
51 All samples were concurrently contaminated with DON (median/95th percentile value: 58 $\mu\text{g kg}^{-1}$
52
53 $\mu\text{g kg}^{-1}$) and NIV (57 $\mu\text{g kg}^{-1}$ /189 $\mu\text{g kg}^{-1}$). Two samples had exceptionally high levels of
54
55 2400 $\mu\text{g kg}^{-1}$ and 490 $\mu\text{g kg}^{-1}$, respectively. The contamination rates of 3-acDON, 15-acDON,
56
57 and FX were 53%, 24%, and 29%, respectively. The levels of 3-acDON (median/95th percentile
58
59 value: 0.76 $\mu\text{g kg}^{-1}$ /32 $\mu\text{g kg}^{-1}$), 15-acDON (<LOD/3.8 $\mu\text{g kg}^{-1}$), and FX (<LOD/3.4 $\mu\text{g kg}^{-1}$)
60
were still low, although they remarkably differed from those of the food samples. Only the

1
2
3 sample with the highest DON-contamination contained a mentionable amount of 99 $\mu\text{g kg}^{-1}$ of
4
5 3-acDON. However, no type D trichothecenes were detected.
6
7
8

9 **Discussion**

10 *Type A trichothecenes*

11
12
13 Oats and oat products had the highest levels of contamination with type A trichothecenes
14 (Table 7). However, the comparatively low contamination of wheat should not be disregarded
15 because of its much higher intake. In SCOOP task 3.2.10 (2003), wheat was identified as the
16 predominant source of T-2/HT-2, but also of DON and NIV intake. As reported in the SCOOP
17 study, oat samples were most frequently contaminated with HT-2 (rate of contamination 41%),
18 followed by maize (24 %), rye (17%), and wheat (12%). The highest contamination rate with T-
19 2 (28%) was found in maize (oats 16%, wheat and rye 21%, each). In this project, however,
20 100% of the oat samples, 94% of the wheat samples and 95% of the rye samples contained T-
21 2/HT-2, which can be traced back to the much lower detection limits of this method. Thus, also
22 the rates of contamination of T-2 triol, DAS, MAS, and NEO were much higher (Tables 5-7) in
23 this study. However, the concentrations of these analytes were all below the LODs of the
24 methods applied in the SCOOP study (2003), where only 1% to 6% of the samples were
25 positive for these analytes. The LODs for type A trichothecenes in wheat, rye or oats were
26 between 2 and 20 $\mu\text{g kg}^{-1}$ in dependence of the analyte and the contributing laboratory. Like in
27 this study, VOL was not detected, but no samples were analyzed for T-2 tetraol or DacVOL.
28 However, data on the occurrence of T-2 tetraol were provided by Klötzel et al. (2005) and
29 Schollenberger et al. (2006). Both reported high levels of this analyte in oats which were even
30 higher than T-2 or HT-2, also supporting our results.
31
32
33
34
35
36
37
38
39
40
41
42
43
44
45
46
47
48
49
50
51
52
53
54

55 In comparison to the concentrations of type A trichothecenes found in this study, the levels
56 reported in SCOOP (2003) were much higher. T-2 levels of wheat were between 2 and 160 μg
57 kg^{-1} , HT-2 levels between 3 and 50 $\mu\text{g kg}^{-1}$. In rye, T-2 values ranged between 10 and 190 μg
58 kg^{-1} . HT-2 values of between 10 and 70 $\mu\text{g kg}^{-1}$ were determined. T-2 levels in oats ranged
59
60

1
2
3 between 10 and 550 $\mu\text{g kg}^{-1}$ and HT-2 levels between 10 and 1150 $\mu\text{g kg}^{-1}$ (SCOOP 2003). The
4
5 values of the few T-2 triol, DAS, MAS, and NEO-positive samples were between 30 and 50 μg
6
7 kg^{-1} . These higher levels may be a result of differing origins or crop years. It also has to be
8
9 considered that the samples analyzed here were all at least cleaned and de-hulled cereals
10
11 intended for human consumption. It has been shown that raw cereal kernels contain a tenfold
12
13 higher toxin amount than de-hulled kernels (Scudamore et al. 2007). Furthermore, Northern
14
15 European countries contributed results to the SCOOP study where usually the highest T-2/HT-2
16
17 levels are determined (Langseth et al. 1999, Pettersson et al. 2006).
18
19
20
21

22
23 The correlations between T-2 and HT-2 in the different cereal types gave interesting results.
24
25 While in wheat the level of HT-2 was about sevenfold as high as the T-2 level, HT-2 levels in
26
27 oats were only about twice as high as those of T-2. The contamination levels of rye were
28
29 however too low to be able to make proper comparisons (Figure 3). These different levels may
30
31 be due to the ability of the plant to metabolize T-2 to HT-2 which has been described for species
32
33 of *Baccharis* (Mirocha et al. 1988). The synthesis of deacetylases may be plant-specific. In this
34
35 context, also deacetylases originating from bacteria of the plant can play a role in metabolizing
36
37 processes (Beeton et al. 1989, Ueno et al. 1983b). Differences in the correlations between T-2
38
39 and HT-2 levels may be due to differing bacterial flora of each plant. However, it is
40
41 questionable whether these processes could lead to such considerable correlations. It seems
42
43 more likely that the different cereal types are infected by different *Fusarium* species or strains
44
45 which possess characteristic metabolite production abilities.
46
47
48
49
50

51
52 Anyway, oat products had the highest levels of contamination with T-2/HT-2 as well as T-2
53
54 tetraol. It should be noticed that the predominantly consumed oat products, fine oat flakes, were
55
56 the food commodity with the highest levels (Figure 4). Especially infants and children have a
57
58 high intake of these products by the consumption of muesli (see also “dietary intake
59
60 estimation”). This should be of concern to official food control authorities and for future
legislation.

Type B trichothecenes

All wheat and rye samples were contaminated with DON, while 74% of the oat samples contained this analyte. The mean contamination level of rye ($28 \mu\text{g kg}^{-1}$) was about half the level of wheat ($57 \mu\text{g kg}^{-1}$) while the mean DON-burden of oats was comparably low ($2.8 \mu\text{g kg}^{-1}$; Tables 5-7). In the SCOOP study (2003), DON was detected in only 61% of the wheat samples (mean level of all contributing countries: $205 \mu\text{g kg}^{-1}$), in 41% of the rye samples ($42 \mu\text{g kg}^{-1}$), and in 33% of the oat samples ($95 \mu\text{g kg}^{-1}$). The rates of contamination as well as the toxin levels were influenced by the LODs of the different methods applied in the SCOOP study (2.0 to $220 \mu\text{g kg}^{-1}$). In wheat the levels of DON ranged between 2.0 and $50000 \mu\text{g kg}^{-1}$, between 2.0 and $595 \mu\text{g kg}^{-1}$ in rye, and between 2.0 and $5004 \mu\text{g kg}^{-1}$ in oats. Engelhardt et al. (2006) reported mean DON levels in wheat of $138 \mu\text{g kg}^{-1}$. Mean levels in wheat and oats reported by Biselli et al. (2005) were 230 and $250 \mu\text{g kg}^{-1}$. Similar results were shown by Schollenberger et al. (2002). The levels found in this study were much lower, which may be a result of the same reasons discussed above (Scudamore et al. 2007).

In the SCOOP study (2003), only 8.0% of the wheat samples, less than 1.0% of the rye samples and 6.0% of the oat samples contained 3-acDON, but at least 20% of all samples 15-acDON. Much higher rates of contamination were determined in this study (Tables 5-7). It was shown that the levels of the acetyl metabolites of DON were only about 2 to 3% as high as the DON-levels of wheat and rye. Due to the low DON-levels in oats, no correlation could be observed in this matrix (Figure 3). Basically, the 15-acDON levels were higher than those of 3-acDON. This resulted in more positive samples which exceeded the LOD. These results are in accordance with Klötzel et al. (2005).

For NIV, rates of contamination of 14% of wheat (values between 2.0 and $440 \mu\text{g kg}^{-1}$), 5.0% of rye (values between 2.0 and $48 \mu\text{g kg}^{-1}$), and 21% of oats (values between 2.0 and $1860 \mu\text{g kg}^{-1}$) were reported in SCOOP data (2003). In spite of the more sensitive method applied here, the

1
2
3 contamination rates of rye and oats from SCOOP data were similar to our results (Tables 5-7).
4
5 However, 67% of the wheat samples were found to be NIV-positive, but with much lower
6
7 contamination levels as a result of the above mentioned reasons.
8
9

10
11 The rates and levels of contamination with FX were extremely low in this study (Tables 5-7).
12
13 Schollenberger et al. (1999, 2002) and Klötzel et al. (2005) also reported no positive cereal-
14
15 based food samples, wheat or oat samples (LODs: 6 $\mu\text{g kg}^{-1}$ and 1.3 $\mu\text{g kg}^{-1}$). However, 10% of
16
17 the wheat samples from SCOOP contained FX between 3.3 $\mu\text{g kg}^{-1}$ and 50 $\mu\text{g kg}^{-1}$.
18
19

20 21 22 *Type D trichothecenes*

23
24 To our knowledge, this was the first measurement of type D trichothecenes in a multitude of
25
26 representative cereal food samples (n=289) since 1980, when a much less sensitive method was
27
28 applied (Stack and Eppley 1980). Thus it was necessary to develop a sensitive LC-MS/MS
29
30 method to provide more up-to-date occurrence data. No samples contained satratoxin G or H,
31
32 roridin A or verrucarin A above their LODs. Actually, it can be concluded that *Stachybotrys*
33
34 spp. and *Myrothecium* spp. metabolites did not represent a risk to food security, at least as
35
36 regarding wheat, rye and oat products. The number of horse feed samples (raw oats, n=17) was
37
38 too low to draw proper conclusions, but no sample contained macrocyclic trichothecenes.
39
40 However, results of Kluwe revealed that stachybotryotoxicosis still is a risk in horse feeding. At
41
42 least 20% of 100 hay and straw samples contained *Stachybotrys* spp. Altogether, 32 strains have
43
44 been isolated and were tested for their toxinogenicity. More than 35% of these strains possessed
45
46 the tri5-gene and actually produced satratoxin G and H as examined by LC-MS/MS (Kluwe
47
48 2006).
49
50
51
52
53
54

55 **Estimation of dietary intake**

56
57 The toxicity of DON, NIV, and T-2/HT-2 was evaluated by the Scientific Committee on Food
58
59 (SCF) in a set of opinions (SCF 1999-2002). In a group evaluation of these four analytes, the
60
Committee concluded that combined or synergistic effects were not probable, although currently

1
2
3 available data on this matter was limited. Hence, the Committee confirmed the single TDI-
4
5 values or temporary TDI-values (t-TDI) for each toxin as follows:
6
7

- 8
- 9
- 10 - DON: TDI = $1 \mu\text{g kg}^{-1}$ body weight (bw)/day
- 11 - NIV: t-TDI = $0.7 \mu\text{g kg}^{-1}$ bw/day
- 12
- 13 - T-2/HT-2: t-TDI = $0.06 \mu\text{g kg}^{-1}$ bw/day
- 14
- 15
- 16
- 17

18 In the following, intake estimations for DON, NIV and T-2/HT-2 were conducted for young
19 children and infants. These are the consumer groups with the highest risk, as they have an
20 exceptionally high intake in relation to their body weight. Hereby, data on the average
21 consumption of wheat flour, rye flour, oat flakes, and oat-containing baby food were used
22 (Table 8). The average body weight of nine-month-old infants and two- to five-year-old children
23 were quoted with 8.95 kg and 16.15 kg (Kersting et al. 1998, Banasiak et al. 2005). The
24 calculations were conducted for a mean case scenario (average consumption \times median toxin
25 concentration) and a bad case scenario (average consumption \times 95th percentile value of toxin
26 concentration). The corresponding levels of contamination can be gleaned from Tables 5-7.
27
28
29
30
31
32
33
34
35
36
37
38
39

40 The daily toxin intake by average consumption of selected food commodities and the percentage
41 of the corresponding TDI-values is shown in Table 8. In the SCOOP study (2003) wheat was
42 identified as the major source of T-2/HT-2 as well as DON and NIV intake. As expected, this
43 was re-confirmed at least with regard to DON and NIV. However, the consumption of oat flakes
44 was shown to play a major role in T-2/HT-2 exposure in this study. The contribution of rye,
45 however, seemed to be negligible. Assuming the mean case scenario, the total T-2/HT-2 intake
46 by the daily ingestion of wheat and rye flour as well as oat flakes barely corresponded to 10% of
47 the t-TDI, whereas the intake by baby food was more than 30% of the t-TDI (Table 8). It must
48 be pointed out that the number of baby food samples examined in this study was too small to
49 justify proper conclusions. However, the T-2/HT-2 levels of oat-containing baby food (n=13)
50 indicated a possible exceedance of the t-TDI in the sub-population of infants giving cause for
51
52
53
54
55
56
57
58
59
60

1
2
3 further study. Furthermore, it should be mentioned that not only T-2/HT-2 primarily accounted
4 for the total type A trichothecene burden but also T-2 tetraol, although this analyte possesses a
5 lower toxicity.
6
7
8
9

10
11 The intake of DON mostly depended on the consumption of wheat. In spite of its high
12 consumption, the contribution to the TDI was only 10% assuming the median contamination
13 level. In the bad case scenario, the DON intake amounted to 44% of the TDI (Table 8). The total
14 DON intake by the daily consumed wheat, rye and oat commodities was slightly increased by
15 the contamination of rye flour, while oat flakes as a source for DON-intake were negligible. The
16 contamination of baby food was considerably lower, which resulted in a very low exposure even
17 assuming the bad case scenario.
18
19
20
21
22
23
24
25
26
27
28

29 The exposure to NIV played a minor role after consumption of the cereals examined in this
30 study. Even in the worse-case scenario only about 7% of the t-TDI for NIV were reached. Rye,
31 oats, and baby food did not or hardly contributed to a NIV-exposure (Table 8).
32
33
34
35
36
37

38 In conclusion, the risk of exceeding the TDI-values could be regarded as low with respect to
39 average consumption and toxin concentrations, in comparison with data of the SCOOP-report
40 (2003). Therein, the percentage of the TDI by the DON-intake of infants ranged between 11%
41 and 96% and between 27% and 560% for the T-2/HT-2 intake, subject to the calculations of the
42 contributing countries. However, infants represented the sub-population with the highest risk to
43 exceed the t-TDI of T-2/HT-2 also in this study. Thus, the setting of a maximum level may be
44 appropriate particularly for baby food or special commodities like oat flakes. It should be noted
45 that wheat, for example, did not contain only DON but also T-2/HT-2 and that the simultaneous
46 occurrence of these toxins leads to a higher total mycotoxin ingestion. Hence, the consideration
47 of a group-TDI for trichothecenes may be useful for a proper risk assessment (Pronk et al.
48 2002).
49
50
51
52
53
54
55
56
57
58
59
60

Acknowledgements

The authors want to thank the Bavarian State Ministry of the Environment, Public Health and Consumer Protection as well as the H. Wilhelm Schaumann foundation for the financial support. Also thanks to the teams of the mycotoxin laboratories for their unhesitant help and labor in grinding, homogenization and preparation of the samples and to Stefan Asam and Michael Rychlik for conducting comparison measurements.

For Peer Review Only

References

Banasiak U, Hesecker H, Sieke C, Sommerfeld C, Vohmann C. 2005. Abschätzung der Aufnahme von Pflanzenschutzmittel-Rückständen in der Nahrung mit neuen Verzehrsmengen für Kinder. Bundesgesundheitsbl – Gesundheitsforsch – Gesundheitsschutz 48:84-98.

Beeton S, Bull AT. 1989. Biotransformation and Detoxification of T-2 Toxin by Soil and Freshwater Bacteria. Appl Environ Microbiol. 55:190-197.

Bennett JW, Klich M. 2003. Mycotoxins. Clin Microbiol Rev. 16:497-516.

Berthiller F, Schuhmacher R, Buttinger G, Krska R. 2005. Rapid simultaneous determination of major type A- and B-trichothecenes as well as zearalenone in maize by high performance liquid chromatography-tandem mass spectrometry. J Chrom A. 1062:209-216.

Biselli S, Hummert C. 2005. Development of a multicomponent method for *Fusarium* toxins using LC-MS/MS and its application during a survey for the content of T-2 toxin and deoxynivalenol in various feed and food samples. Food Add Contam. 22:752-760.

Deutsches Institut für Normung. 1994. DIN 32645 „Chemische Analytik; Nachweis-, Erfassungs- und Bestimmungsgrenze; Ermittlung unter Wiederholbedingungen; Begriffe, Verfahren, Auswertung“. Berlin, Germany.

Engelhardt G, Barthel J, Sparrer D. 2004. Fusarium mycotoxins and ochratoxin A in cereals and cereal products: results from the Bavarian Health and Food Safety Authority in 2004. Mol Nutr Food Res. 50:401-405.

1
2
3 European Commission. Directorate-General Health and Consumer Protection. 1999-2002.
4
5 Scientific Committee on Food (SCF): Opinions of the SCF on *Fusarium* Toxins, Part 1-6.
6
7 Available from: http://ec.europa.eu/food/food/chemicalsafety/contaminants/fusarium_en.htm
8
9

10
11 European Commission. Directorate-General Health and Consumer Protection. 2003. Scientific
12
13 Cooperation: SCOOP Task 3.2.10: Collection of occurrence data of *Fusarium* toxins in food
14
15 and assessment of dietary intake by population of EU Member States. Available from:
16
17 <http://ec.europa.eu/food/fs/scoop/task3210.pdf>
18
19

20
21 European Commission. 2002. Commission Decision (EC) No 657/2002 of 12 August 2002
22
23 implementing Council Directive 96/23/EC concerning the performance of analytical methods
24
25 and the interpretation of results. Off J Eur Union. L221:8-36.
26
27
28

29
30 European Commission. 2006. Commission Regulation (EC) No 401/2006 of 23 February 2006
31
32 laying down the methods of sampling and analysis for the official control of the levels of
33
34 mycotoxins in foodstuffs. Off J Eur Union. L70:12-34.
35
36
37

38
39 European Commission. 2006. Commission Regulation (EC) No 1881/2006 of 19 December
40
41 2006 setting maximum levels for certain contaminants in foodstuffs. Off J Eur Union. L364,5-
42
43 24.
44
45
46

47
48 European Commission. 2007. Commission Regulation (EC) No 1126/2007 of 28 September
49
50 2007 amending Regulation (EC) No 1881/2006 setting maximum levels for certain
51
52 contaminants in foodstuffs as regards *Fusarium* toxins in maize and maize products. Off J Eur
53
54 Union. L255:14-17.
55
56
57

1
2
3 Gentili A, Caretti F, D'Ascenzo G, Mainero Rocca L, Marchese S, Materazzi S, Perret D. 2007.
4
5 Simultaneous Determination of Trichothecenes A, B, and D in Maize Food Products by LC-
6
7 MS-MS. *Chromatographia* 66:669-676.
8
9

10
11
12 Gottschalk C, Bauer J, Meyer K. 2008. Detection of satratoxin G and H in indoor air from a
13
14 water-damaged building. *Mycopathologia* 166:103-107.
15
16

17
18
19 Jarvis BB, Lee Y-W, Comezoglu SN, Yatawara CS. 1986. Trichothecenes produced by
20
21 *Stachybotrys atra* from Eastern Europe. *Appl Environ Microbiol.* 51:915-918.
22
23

24
25
26 Jarvis BB, Sorenson WG, Hintikka EL, Nikulin M, Zhou Y, Jiang J, Wang S, Hinkley S, Etzel
27
28 RA, Dearborn D. 1998. Study of toxin production by isolates of *Stachybotrys chartarum* and
29
30 *Memnoniella echinata* isolated during a study of pulmonary hemosiderosis in infants. *Appl*
31
32 *Environ Microbiol.* 64:3620-3625.
33
34

35
36
37 Johannig E, Biagini R, Hull D, Morey P, Jarvis B, Landsbergis P. 1996. Health and
38
39 immunology study following exposure to toxigenic fungi (*Stachybotrys chartarum*) in a water-
40
41 damaged office environment. *Int Arch Occup Environ Health* 68:207-218.
42
43

44
45
46 Kersting M, Alexy U, Sichert-Hellert W, Manz F, Schöch G. 1998. Measured consumption of
47
48 commercial infant food products in German infants: results from the DONALD study. *J Pediatr*
49
50 *Gastroenterol Nutr.* 27:547-552.
51
52

53
54
55 Klötzel M, Gutsche B, Lauber U, Humpf H-U. 2005. Determination of 12 type A and B
56
57 trichothecenes in cereals by liquid chromatography-electrospray tandem mass spectrometry. *J*
58
59 *Agric Food Chem.* 53:8904-8910.
60

1
2
3 Kluwe H. 2006. Untersuchungen zum Vorkommen und zur Toxizität von *Stachybotrys* spp. in
4 Heu- und Strohproben aus Pferdeställen [dissertation]. [Munich, Germany]: Ludwig-
5 Maximilians-Universität München.
6
7
8

9
10
11 Krska R, Baumgartner S, Josephs R. 2001. The state-of-the-art in the analysis of type-A and -B
12 trichothecene mycotoxins in cereals. *Fresenius J Anal Chem.* 371:285-299.
13
14

15
16
17 Lagana A, Curini R, D'Ascenzo G, De Leva I, Faberi A, Pastorini E. 2003. Liquid
18 chromatography/tandem mass spectrometry for the identification and determination of
19 trichothecenes in maize. *Rap Commun Mass Spec.* 17:1037-1043.
20
21
22
23

24
25
26
27 Langseth W, Rundberget T. 1999. The occurrence of HT-2 toxin and other trichothecenes in
28 Norwegian cereals. *Mycopathologia.* 147:157-165.
29
30

31
32
33 Mirocha CJ, Abbas HK, Treeful L, Bean G. 1988. T-2 Toxin and Diacetoxyscirpenol
34 Metabolism by *Baccharis* spp. *Appl Environ Microbiol.* 54:2277-2280.
35
36
37

38
39
40 Pettersson H, Börjesson T. 2006. T-2 and HT-2 Toxins in Oats. Presented at: Mycotoxin-
41 Workshop. Proceedings of the 28th Mycotoxin Workshop. May 29-31, Bydgoszcz, Poland.
42
43
44

45
46
47 Pronk MEJ, Schothorst RC, Egmond HP. 2002. Toxicology and occurrence of nivalenol,
48 fusarenon X, diacetoxyscirpenol, neosolaniol and 3- and 15-acetyldeoxynivalenol: a review of
49 six trichothecenes (Report No 388802024/2002). National Institute of Public Health and the
50 Environment, Bilthoven, The Netherlands.
51
52
53

54
55
56
57 Schollenberger M, Suchy S, Jara HT, Drochner W, Müller H-M. 1999. A survey of *Fusarium*
58 toxins in cereal-based foods marketed in an area of southwest Germany. *Mycopathologia*
59
60 147:49-57.

1
2
3 Schollenberger M, Jara HT, Suchy S, Drochner W, Müller H-M. 2002. *Fusarium* toxins in
4 wheat flour collected in an area in southwest Germany. *Int J Food Microbiol.* 72:85-89.
5
6

7
8
9 Schollenberger M, Müller H-M, Rühle M, Suchy S, Plank S, Drochner W. 2006. Natural
10 occurrence of 16 *Fusarium* toxins in grains and feedstuffs of plant origin from Germany.
11 *Mycopathologia* 161: 43-52.
12
13
14

15
16
17
18 Scudamore KA, Baillie H, Patel S, Edwards SG. 2007. Occurrence and fate of *Fusarium*
19 mycotoxins during commercial processing of oats in the UK. *Food Add Contam.* 24:1374-1385.
20
21
22

23
24
25 Stack ME, Eppley RM. 1980. High Pressure Chromatographic Determination of Satratoxins G
26 and H in Cereal Grains. *J Assoc Off Anal Chem.* 63:1278-1281.
27
28

29
30
31 Stecher G, Jarukamjorn K, Zaborski P, Bakry R, Huck CW, Bonn GK. 2007. Evaluation of
32 extraction methods for the simultaneous analysis of simple and macrocyclic trichothecenes.
33 *Talanta* 73:251-257.
34
35
36

37
38
39 Thrane U, Adler A, Clasen P-E, Galvano F, Langseth W, Lew H, Logrieco A, Nielsen KF,
40 Ritieni A. 2004. Diversity in metabolite production by *Fusarium langsethiae*, *Fusarium poae*,
41 and *Fusarium sporotrichioides*. *Int J Food Microbiol.* 95:257-266.
42
43
44
45
46

47
48
49 Torp M, Nirenberg HI. 2004. *Fusarium langsethiae* sp. nov. on cereals in Europe. *Int J Food*
50 *Microbiol.* 95:247-256.
51
52

53
54
55 Ueno Y. 1983a. *Trichothecenes - Chemical, Biological and Toxicological Aspects.* Elsevier,
56 Amsterdam, The Netherlands.
57
58
59
60

1
2
3 Ueno Y, Nakayama K, Ishii K, Tashiro F, Minoda Y, Omori T, Komagata K. 1983b.
4
5 Metabolism of T-2 Toxin in *Curtobacterium* sp. Strain 114-2. Appl Environ Microbiol. 46:120-
6
7 127.
8
9

10
11 World Health Organisation (WHO). 1990. Selected mycotoxins: Ochratoxins, Trichothecenes,
12
13 Ergot. Environmental Health Criteria 105. Geneva, Switzerland.
14
15
16
17
18
19
20
21
22
23
24
25
26
27
28
29
30
31
32
33
34
35
36
37
38
39
40
41
42
43
44
45
46
47
48
49
50
51
52
53
54
55
56
57
58
59
60

Table 1. MRM-transitions and MS parameters for type A, B, and D trichothecenes

Analyte	MW (g/mol)	Precursor ion	Product ions	DP (V)	CE (eV)	CXP (V)	Dwell time (msec)		
Type A trichothecenes									
T-2	466	[M+NH ₄] ⁺	483.9	Quantifier	305.2	61	19	20	75
				Qualifier	215.2	61	25	14	75
13C-T-2	490	[M+NH ₄] ⁺	508.3	Quantifier	229.2	46	25	14	75
				Qualifier	322.2	46	19	20	75
HT-2	424	[M+NH ₄] ⁺	442.4	Quantifier	263.2	51	17	16	75
				Qualifier	215.1	51	19	16	75
T-2 triol	382	[M+NH ₄] ⁺	400.4	Quantifier	281.2	36	17	20	75
				Qualifier	215.1	36	13	18	75
T-2 tetraol	298	[M+NH ₄] ⁺	316.2	Quantifier	215.2	36	13	20	150
				Qualifier	281.3	36	11	18	150
DAS	366	[M+NH ₄] ⁺	384.2	Quantifier	307.3	51	17	10	75
				Qualifier	247.1	51	19	24	75
MAS	324	[M+NH ₄] ⁺	342.2	Quantifier	265.1	41	13	16	125
				Qualifier	107.1	41	19	10	125
NEO	382	[M+NH ₄] ⁺	400.2	Quantifier	305.3	51	17	18	125
				Qualifier	245.1	51	25	16	125
DacVOL	350	[M+NH ₄] ⁺	368.3	Quantifier	291.2	51	13	20	75
				Qualifier	249.1	51	21	18	75
VOL	266	[M+NH ₄] ⁺	284.2	Quantifier	267.2	36	7	16	125
				Qualifier	249.3	36	11	24	125
Type B trichothecenes									
DON	296	[M-H] ⁻	294.9	Quantifier	265.0	-45	-16	-15	150
				Qualifier	138.0	-45	-22	-11	150
13C-DON	311	[M-H] ⁻	310.3	Quantifier	144.9	-55	-22	-7	150
				Qualifier	279.0	-55	-16	-13	150
3-acDON	338	[M+NH ₄] ⁺	356.3	Quantifier	231.1	36	25	16	125
				Qualifier	203.0	36	21	22	125
15-acDON	338	[M+NH ₄] ⁺	356.1	Quantifier	321.1	46	19	28	125
				Qualifier	137.2	46	21	14	125
NIV	312	[M+HCOO] ⁻	357.1	Quantifier	281.0	-50	-18	-13	150
				Qualifier	202.8	-50	-24	-11	150
FX	354	[M+NH ₄] ⁺	372.1	Quantifier	355.1	41	11	24	125
				Qualifier	247.2	41	19	16	125

Type D trichothecenes									
SG	544	[M+NH ₄] ⁺	562.3	Quantifier	231.2	51	23	16	75
				Qualifier	249.2	51	21	18	75
SH	528	[M+NH ₄] ⁺	546.5	Quantifier	529.2	36	21	20	75
				Qualifier	281.1	36	21	18	75
RA	532	[M+NH ₄] ⁺	550.5	Quantifier	249.2	56	23	18	175
				Qualifier	533.4	56	15	18	175
VA	502	[M+NH ₄] ⁺	520.4	Quantifier	249.1	51	23	18	175
				Qualifier	457.3	51	17	14	175

For Peer Review Only

Table 2: Performance parameters of the LC-MS/MS-method

Analyte	Linearity* (ng ml ⁻¹)	Correlation r (calibration points)	RSD (n=5)		DIN 32645**		Signal-to-noise***	
			1 ng ml ⁻¹	10 ng ml ⁻¹	LOD (ng ml ⁻¹)	LOQ (ng ml ⁻¹)	LOD (ng ml ⁻¹)	LOQ (ng ml ⁻¹)
Type A trichothecenes								
T-2	LOD – 250	0.9998 (15)	1.8%	2.2%	0.20	0.66	0.026	0.078
HT-2	LOD – 200	0.9995 (16)	3.3%	1.6%	0.32	1.1	0.061	0.18
T-2 triol	LOD – 250	0.9996 (15)	6.7%	4.4%	0.27	0.92	0.16	0.49
T-2 tetraol	LOD – 250	0.9992 (14)	6.5%	2.9%	0.41	1.4	0.10	0.30
DAS	LOD – 250	0.9999 (15)	4.1%	1.8%	0.085	0.29	0.030	0.089
MAS	LOD – 250	0.9999 (16)	2.2%	1.3%	0.085	0.29	0.012	0.035
NEO	LOD – 250	0.9999 (16)	3.8%	0.5%	0.11	0.35	0.029	0.087
DacVOL	LOD – 250	0.9999 (15)	3.1%	1.0%	0.064	0.22	0.017	0.051
VOL	LOD – 200	0.9995 (15)	7.6%	0.8%	0.34	1.1	0.27	0.82
Type B trichothecenes								
DON	LOD – 250	0.9999 (16)	2.8%	1.4%	0.092	0.31	0.038	0.11
3-acDON	LOD – 250	0.9996 (15)	8.4%	1.5%	0.28	0.96	0.14	0.42
15-acDON	LOD – 250	0.9999 (16)	4.7%	2.3%	0.14	0.46	0.033	0.10
NIV	LOD – 250	0.9980 (10)	11%	1.1%	0.70	2.2	1.2	3.6
FX	LOD – 250	0.9999 (16)	4.8%	1.1%	0.11	0.37	0.12	0.35
Type D trichothecenes								
SG	LOD – 250	0.9993 (15)	5.3%	1.4%	0.28	0.95	0.038	0.11
SH	LOD – 200	0.9993 (15)	9.1%	3.1%	0.38	1.3	0.15	0.46
RA	LOD – 250	0.9995 (15)	3.9%	1.7%	0.22	0.74	0.021	0.063
VA	LOD – 250	0.9996 (16)	2.5%	0.7%	0.20	0.67	0.044	0.13

*calculated using F-test (Mandel) **uncertainty 33.3 %; probability of error 1 %; n=1 ***used for quantification; LOD: S/N=3, LOQ: S/N=9

Table 3: Average recovery rates of type A, B and D trichothecenes from wheat flour, rye flour, and oat flakes (fortification levels $1 \mu\text{g kg}^{-1}$, $10 \mu\text{g kg}^{-1}$, $50 \mu\text{g kg}^{-1}$; n=5)

Analyte	Average recovery rate (%) \pm RSD (%)		
	wheat flour	rye flour	oat flakes
Type A trichothecenes			
T-2	108 \pm 2.8	95 \pm 6.1	103 \pm 2.7
HT-2	98 \pm 4.9	93 \pm 10	102 \pm 3.4
T-2 triol	97 \pm 5.0	92 \pm 3.7	99 \pm 4.8
T-2 tetraol	73 \pm 7.8	75 \pm 8.4	60 \pm 8.4
DAS	106 \pm 1.3	101 \pm 3.6	107 \pm 2.6
MAS	101 \pm 1.5	85 \pm 5.4	97 \pm 2.3
NEO	99 \pm 5.0	90 \pm 6.8	98 \pm 3.3
DacVOL	96 \pm 2.8	86 \pm 3.6	96 \pm 3.6
VOL	101 \pm 5.3	83 \pm 8.7	95 \pm 6.8
Type B trichothecenes			
DON	92 \pm 17	89 \pm 11	98 \pm 4.5
3-acDON	104 \pm 5.0	96 \pm 6.2	99 \pm 4.6
15-acDON	98 \pm 6.0	95 \pm 6.4	102 \pm 3.8
NIV	61 \pm 16	67 \pm 11	67 \pm 8.7
FX	87 \pm 4.9	84 \pm 9.5	94 \pm 4.7
Type D trichothecenes			
SG	91 \pm 4.8	83 \pm 6.3	98 \pm 6.1
SH	87 \pm 5.3	85 \pm 5.8	92 \pm 6.0
RA	107 \pm 4.2	87 \pm 6.9	89 \pm 12
VA	78 \pm 4.9	76 \pm 5.3	81 \pm 9.0

Table 4. Trueness assessment of the method by interlaboratory tests and comparison measurements for T-2, HT-2, and DON

Laboratory / method	Material	Analyte	Results	Results with this	
				LC-MS/MS	Accuracy
				method	
- Interlaboratory test (DLA Ahrensburg, Germany; 28 participating labs)	Cereals for animal feed (DLA-05/2007)	DON	257 – 555 $\mu\text{g kg}^{-1}$ ($X = 405 \mu\text{g kg}^{-1}$)	324 $\mu\text{g kg}^{-1}$	z-score = -1.1
- Comparison measurement (Chair of Food Chemistry, Technische Universitaet Muenchen, Germany; stable isotope dilution assay - LC- MS/MS)	Oat flakes (1)	T-2	20 $\mu\text{g kg}^{-1}$	18 $\mu\text{g kg}^{-1}$	90%
		HT-2	50 $\mu\text{g kg}^{-1}$	49 $\mu\text{g kg}^{-1}$	98%
	Oat flakes (2)	T-2	20 $\mu\text{g kg}^{-1}$	17 $\mu\text{g kg}^{-1}$	85%
		HT-2	45 $\mu\text{g kg}^{-1}$	44 $\mu\text{g kg}^{-1}$	98%
- Comparison measurement (Bavarian Health and Food Safety Authority, Oberschleißheim, Germany; HPLC-FLD)	Wheat flour	DON	106 $\mu\text{g kg}^{-1}$	113 $\mu\text{g kg}^{-1}$	107%
	Whole wheat flour	DON	130 $\mu\text{g kg}^{-1}$	121 $\mu\text{g kg}^{-1}$	93%
	Wheat kernels	DON	158 $\mu\text{g kg}^{-1}$	149 $\mu\text{g kg}^{-1}$	94%
	Wheat bran (1)	DON	294 $\mu\text{g kg}^{-1}$	325 $\mu\text{g kg}^{-1}$	111%
	Wheat bran (2)	DON	1087 $\mu\text{g kg}^{-1}$	1069 $\mu\text{g kg}^{-1}$	98%

Table 5. Rates and levels of contamination of different commodities of wheat with the most relevant trichothecenes. All samples (n=130), wheat flour (n=39), whole wheat flour (n=11), wheat kernels (n=52), semolina (n=13), wheat bran (n=10), and wheat-containing infant food (n=5)

Analyte	Commodity	Contamination rate (%)	Mean ($\mu\text{g kg}^{-1}$)	Median ($\mu\text{g kg}^{-1}$)	95 th percentile ($\mu\text{g kg}^{-1}$)	Maximum value ($\mu\text{g kg}^{-1}$)	
T-2	all wheat samples	85	0.21	0.09	0.91	1.9	
	wheat flour	85	0.09	0.04	0.17	1.2	
	whole wheat flour	100	0.16	0.15	0.25	0.25	
	wheat kernels	94	0.27	0.17	0.76	1.1	
	semolina	39	0.02	< LOD	0.06	0.08	
	wheat bran	100	0.84	0.60	1.8	1.9	
	infant food	40	0.04	< LOD	0.13	0.15	
	HT-2	all wheat samples	94	1.6	0.84	5.6	22
HT-2	wheat flour	97	0.65	0.32	0.92	11	
	whole wheat flour	100	1.4	1.6	2.1	2.2	
	wheat kernels	100	1.9	1.4	4.4	5.8	
	semolina	54	0.13	0.09	0.45	0.67	
	wheat bran	100	7.1	6.7	17	22	
	infant food	80	0.55	0.32	1.2	1.3	
	T-2 + HT-2	all wheat samples	94	1.8	0.91	6.4	24
T-2 + HT-2	wheat flour	97	0.74	0.34	1.1	12	
	whole wheat flour	100	1.6	1.8	2.4	2.4	
	wheat kernels	100	2.2	1.9	5.2	6.8	
	semolina	54	0.15	0.09	0.50	0.74	
	wheat bran	100	7.9	7.6	19	24	
	infant food	80	0.59	0.36	1.3	1.3	
	T-2 triol	all wheat samples	18	0.08	< LOD	0.25	1.4
	T-2 triol	wheat flour	2.6	0.03	< LOD	< LOD	1.4
whole wheat flour		9.1	0.02	< LOD	0.12	0.25	
wheat kernels		28	0.07	< LOD	0.25	0.25	
semolina		n.d.	< LOD	< LOD	< LOD	< LOD	
wheat bran		78	0.55	0.52	1.2	1.3	
infant food		n.d.	< LOD	< LOD	< LOD	< LOD	
T-2 tetraol		all wheat samples	53	2.6	0.15	8.0	83
T-2 tetraol	wheat flour	21	0.78	< LOD	1.4	25	
	whole wheat flour	73	1.5	1.7	3.2	3.4	

1							
2							
3		wheat kernels	79	2.7	1.8	8.0	10
4		semolina	7.7	0.04	< LOD	0.19	0.46
5		wheat bran	100	17	4.2	65	83
6		infant food	20	0.03	< LOD	0.12	0.15
7							
8							
9	DAS	all wheat samples	3.1	0.01	< LOD	< LOD	0.25
10		wheat flour	2.6	0.01	< LOD	< LOD	0.25
11		whole wheat flour	n.d.	< LOD	< LOD	< LOD	< LOD
12		wheat kernels	1.9	< LOD	< LOD	< LOD	0.25
13		semolina	n.d.	< LOD	< LOD	< LOD	< LOD
14		wheat bran	22	0.05	< LOD	0.25	0.25
15		infant food	n.d.	< LOD	< LOD	< LOD	< LOD
16							
17							
18							
19							
20	MAS	all wheat samples	92	0.30	0.11	0.88	5.9
21		wheat flour	92	0.11	0.06	0.19	1.6
22		whole wheat flour	100	0.55	0.51	1.3	1.4
23		wheat kernels	98	0.27	0.21	0.67	0.86
24		semolina	62	0.02	0.02	0.05	0.06
25		wheat bran	100	1.6	0.83	4.9	5.9
26		infant food	80	0.04	0.02	0.11	0.12
27							
28	NEO	all wheat samples	24	0.02	< LOD	0.11	0.40
29		wheat flour	2.6	< LOD	< LOD	< LOD	0.17
30		whole wheat flour	9.1	< LOD	< LOD	0.02	0.04
31		wheat kernels	40	0.03	< LOD	0.12	0.15
32		semolina	n.d.	< LOD	< LOD	< LOD	< LOD
33		wheat bran	89	0.10	0.04	0.33	0.40
34		infant food	n.d.	< LOD	< LOD	< LOD	< LOD
35							
36	DON	all wheat samples	100	57	23	162	1163
37		wheat flour	100	45	25	110	613
38		whole wheat flour	100	39	13	116	131
39		wheat kernels	100	49	27	154	235
40		semolina	100	39	17	140	172
41		wheat bran	100	225	64	839	1163
42		infant food	100	12	9.9	22	24
43							
44							
45							
46							
47							
48							
49	3-acDON	all wheat samples	52	0.57	0.21	2.4	15
50		wheat flour	38	0.29	< LOD	0.77	5.2
51		whole wheat flour	64	0.44	0.21	1.5	1.8
52		wheat kernels	68	0.68	0.47	2.7	3.8
53		semolina	15	0.05	< LOD	0.31	0.47
54		wheat bran	67	2.2	0.21	10	15
55							
56							
57							
58							
59							
60							

1
2
3
4
5
6
7
8
9
10
11
12
13
14
15
16
17
18
19
20
21
22
23
24
25
26
27
28
29
30
31
32
33
34
35
36
37
38
39
40
41
42
43
44
45
46
47
48
49
50
51
52
53
54
55
56
57
58
59
60

	infant food	20	0.30	< LOD	1.2	1.5
15-acDON	all wheat samples	72	0.90	0.17	3.5	26
	wheat flour	85	0.42	0.11	0.82	8.8
	whole wheat flour	64	0.60	0.33	1.8	2.1
	wheat kernels	72	1.0	0.46	4.5	6.1
	semolina	46	0.10	< LOD	0.51	0.70
	wheat bran	78	3.8	0.96	17	26
	infant food	60	0.69	0.12	2.6	3.2
NIV	all wheat samples	67	6.8	1.8	24	96
	wheat flour	56	4.3	1.8	12	77
	whole wheat flour	91	13	9.5	41	62
	wheat kernels	77	5.7	1.8	19	31
	semolina	31	3.4	< LOD	17	35
	wheat bran	89	23	14	68	96
	infant food	40	2.1	< LOD	7.4	8.8
FX	all wheat samples	5.4	0.02	< LOD	0.10	0.93
	wheat flour	n.d.	< LOD	< LOD	< LOD	< LOD
	whole wheat flour	n.d.	< LOD	< LOD	< LOD	< LOD
	wheat kernels	11	0.04	< LOD	0.18	0.93
	semolina	7.7	0.01	< LOD	0.07	0.18
	wheat bran	n.d.	< LOD	< LOD	< LOD	< LOD
	infant food	n.d.	< LOD	< LOD	< LOD	< LOD

n.d. = not detectable

Table 6. Rates and levels of contamination of different commodities of rye with the most relevant trichothecenes. All samples (n=61), rye flour (n=15), whole rye flour (n=9), rye kernels (n=37)

Analyte	Commodity	Contamination	Mean ($\mu\text{g kg}^{-1}$)	Median	95 th percentile	Maximum
		rate (%)		($\mu\text{g kg}^{-1}$)	($\mu\text{g kg}^{-1}$)	value ($\mu\text{g kg}^{-1}$)
T-2	all samples	87	0.13	0.11	0.30	0.77
	rye flour	100	0.16	0.13	0.33	0.42
	whole rye flour	100	0.22	0.18	0.59	0.77
	rye kernels	78	0.10	0.04	0.29	0.30
HT-2	all samples	93	0.56	0.42	1.5	2.6
	rye flour	100	0.73	0.45	1.8	2.6
	whole rye flour	100	0.76	0.54	1.8	2.2
	rye kernels	89	0.45	0.36	1.1	1.5
T-2 + HT-2	all samples	95	0.69	0.53	1.8	3.1
	rye flour	100	0.89	0.57	2.1	3.1
	whole rye flour	100	1.0	0.74	2.4	3.0
	rye kernels	92	0.55	0.51	1.4	1.8
T-2 triol	all samples	4.7	0.01	< LOD	< LOD	0.25
	rye flour	6.3	0.02	< LOD	0.06	0.25
	whole rye flour	13	0.03	< LOD	0.16	0.25
	rye kernels	2.9	0.01	< LOD	< LOD	0.25
T-2 tetraol	all samples	79	2.3	2.0	6.4	8.1
	rye flour	88	2.5	2.3	6.3	6.4
	whole rye flour	50	2.1	0.68	6.8	7.4
	rye kernels	81	2.3	1.9	6.4	8.1
DAS	all samples	n.d.	< LOD	< LOD	< LOD	< LOD
	rye flour	n.d.	< LOD	< LOD	< LOD	< LOD
	whole rye flour	n.d.	< LOD	< LOD	< LOD	< LOD
	rye kernels	n.d.	< LOD	< LOD	< LOD	< LOD
MAS	all samples	87	0.05	0.02	0.15	0.31
	rye flour	94	0.05	0.03	0.14	0.20
	whole rye flour	88	0.07	0.02	0.24	0.31
	rye kernels	84	0.04	0.02	0.13	0.18
NEO	all samples	15	0.01	< LOD	0.04	0.10
	rye flour	19	0.01	< LOD	0.04	0.04
	whole rye flour	38	0.02	< LOD	0.08	0.10
	rye kernels	8.1	< LOD	< LOD	0.04	0.04

1							
2							
3	DON	all samples	100	28	15	92	288
4		rye flour	100	26	23	46	64
5		whole rye flour	100	32	6.5	105	112
6		rye kernels	100	28	14	79	288
7							
8	3-acDON	all samples	59	0.39	0.21	1.6	5.0
9		rye flour	63	0.19	0.21	0.54	0.63
10		whole rye flour	50	0.49	0.11	2.0	2.4
11		rye kernels	59	0.45	0.21	1.6	5.0
12							
13	15-acDON	all samples	80	0.73	0.35	2.6	8.6
14		rye flour	100	0.43	0.37	0.86	0.99
15		whole rye flour	63	0.88	0.20	3.5	4.3
16		rye kernels	76	0.84	0.35	2.7	8.6
17							
18	NIV	all samples	3.3	0.06	< LOD	< LOD	1.8
19		rye flour	n.d.	< LOD	< LOD	< LOD	< LOD
20		whole rye flour	n.d.	< LOD	< LOD	< LOD	< LOD
21		rye kernels	5.4	0.10	< LOD	0.36	1.8
22							
23	FX	all samples	1.6	0.01	< LOD	< LOD	0.18
24		rye flour	n.d.	< LOD	< LOD	< LOD	< LOD
25		whole rye flour	n.d.	< LOD	< LOD	< LOD	< LOD
26		rye kernels	2.7	< LOD	< LOD	< LOD	0.18
27							
28							
29							
30							
31							
32							
33							
34							
35	n.d. = not detectable						
36							
37							
38							
39							
40							
41							
42							
43							
44							
45							
46							
47							
48							
49							
50							
51							
52							
53							
54							
55							
56							
57							
58							
59							
60							

Table 7. Rates and levels of contamination of different commodities of oats with the most relevant trichothecenes: All samples (n=98), fine oat flakes (n=31), oat flakes (n=23), oat kernels (n=19), oat bran (n=12), and oat-containing infant food (n=13)

Analyte	Commodity	Contamination rate (%)	Mean ($\mu\text{g kg}^{-1}$)	Median ($\mu\text{g kg}^{-1}$)	95 th percentile ($\mu\text{g kg}^{-1}$)	Maximum value ($\mu\text{g kg}^{-1}$)
T-2	all samples	100	4.2	2.2	15	34
	fine oat flakes	100	6.7	3.6	20	34
	oat flakes	100	3.8	1.8	11	17
	oat kernels	100	2.5	1.5	7.3	12
	oat bran	100	4.0	3.1	9.2	11
	infant food	100	1.8	1.3	4.7	5.6
HT-2	all samples	99	10	6.0	35	51
	fine oat flakes	100	14	8.3	44	51
	oat flakes	100	9.6	5.4	24	48
	oat kernels	100	7.6	4.4	18	34
	oat bran	100	11	8.5	25	32
	infant food	92	6.1	4.7	15	19
T-2 + HT-2	all samples	100	15	8.2	50	85
	fine oat flakes	100	21	12	63	85
	oat flakes	100	13	7.2	33	65
	oat kernels	100	10	6.0	25	46
	oat bran	100	15	12	34	43
	infant food	100	7.9	6.0	20	23
T-2 triol	all samples	60	0.43	0.25	1.5	2.7
	fine oat flakes	74	0.60	0.55	1.5	2.7
	oat flakes	52	0.39	0.25	1.4	1.5
	oat kernels	53	0.33	0.25	1.2	1.5
	oat bran	58	0.38	0.25	1.2	1.5
	infant food	54	0.26	0.25	0.85	1.3
T-2 tetraol	all samples	90	9.7	6.4	25	85
	fine oat flakes	94	11	9.5	22	34
	oat flakes	87	7.7	5.2	26	27
	oat kernels	95	8.4	5.3	24	24
	oat bran	100	11	10	26	26
	infant food	69	12	3.0	44	85
DAS	all samples	60	0.05	0.04	0.17	0.38
	fine oat flakes	71	0.08	0.04	0.19	0.38

1							
2							
3		oat flakes	65	0.04	0.04	0.12	0.17
4		oat kernels	47	0.04	< LOD	0.17	0.25
5		oat bran	75	0.04	0.04	0.08	0.12
6		infant food	31	0.03	< LOD	0.12	0.25
7							
8							
9	MAS	all samples	95	0.09	0.07	0.23	0.66
10							
11		fine oat flakes	97	0.59	0.28	1.9	2.7
12							
13		oat flakes	91	0.06	0.06	0.12	0.18
14		oat kernels	89	0.09	0.05	0.25	0.27
15		oat bran	100	0.08	0.06	0.16	0.17
16		infant food	92	0.07	0.06	0.20	0.21
17							
18	NEO	all samples	92	0.37	0.22	1.4	2.7
19							
20		fine oat flakes	97	0.59	0.28	1.9	2.7
21							
22		oat flakes	96	0.33	0.14	1.1	1.4
23		oat kernels	79	0.22	0.13	0.64	0.9
24		oat bran	100	0.30	0.26	0.62	0.81
25		infant food	85	0.16	0.09	0.47	0.51
26							
27	DON	all samples	74	2.8	0.53	11	55
28							
29		fine oat flakes	87	4.3	1.2	18	55
30							
31		oat flakes	70	2.6	0.30	8.9	39
32		oat kernels	84	2.9	1.1	11	30
33		oat bran	58	0.67	0.18	2.6	4.2
34		infant food	54	1.1	0.17	4.7	6.5
35							
36	3-acDON	all samples	28	0.43	< LOD	2.1	8.2
37							
38		fine oat flakes	48	0.97	< LOD	5.8	8.2
39							
40		oat flakes	13	0.27	< LOD	1.9	3.6
41		oat kernels	16	0.19	< LOD	1.4	1.9
42		oat bran	25	0.12	< LOD	0.58	0.75
43		infant food	23	0.09	< LOD	0.44	0.78
44							
45	15-acDON	all samples	28	0.11	< LOD	0.63	1.4
46							
47		fine oat flakes	32	0.13	< LOD	0.77	1.3
48							
49		oat flakes	8.7	0.03	< LOD	0.04	0.58
50		oat kernels	42	0.13	< LOD	0.62	0.75
51		oat bran	25	0.08	< LOD	0.35	0.38
52		infant food	31	0.20	< LOD	0.88	1.4
53							
54	NIV	all samples	24	0.96	< LOD	6.1	17
55							
56		fine oat flakes	39	2.0	< LOD	7.7	17
57							
58		oat flakes	17	0.31	< LOD	1.8	1.8
59		oat kernels	26	1.1	< LOD	6.4	8.7
60							

1						
2						
3		oat bran	17	0.30	< LOD	1.8
4						1.8
5		infant food	7.7	0.14	< LOD	0.72
6	FX	all samples	6.1	0.02	< LOD	0.18
7						0.53
8		fine oat flakes	6.4	0.01	< LOD	0.09
9						0.18
10		oat flakes	8.7	0.04	< LOD	0.41
11						0.53
12		oat kernels	5.3	0.01	< LOD	0.02
13						0.18
14		oat bran	n.d.	< LOD	< LOD	< LOD
15		infant food	7.7	0.01	< LOD	0.07
16						0.18

n.d. = not detectable

Table 8. Estimated intake of DON, NIV and T-2/HT-2 by average consumption of selected food commodities by two- to five-year-old children* and nine-month-old infants**

Commodity	Average consumption (g/day)	Estimated toxin intake (ng/day) [% TDI]					
		DON		NIV		T-2/HT-2	
		mean case	bad case	mean case	bad case	mean case	bad case
Wheat flour	65.2*	1630 [10]	7172 [44]	117 [1.0]	782 [6.9]	22 [2.3]	72 [7.4]
Rye flour	12.3*	283 [1.8]	566 [3.5]	0 [0]	0 [0]	7.0 [0.72]	26 [2.7]
Fine oat flakes	3.1*	3.7 [0.02]	56 [0.35]	0 [0]	24 [0.21]	37 [3.8]	195 [20]
Oat-containing infant food	30.1**	5.1 [0.06]	141 [1.6]	0 [0]	22 [0.35]	181 [34]	602 [112]

* Banasiak et al. 2005 ** Kersting et al. 1998

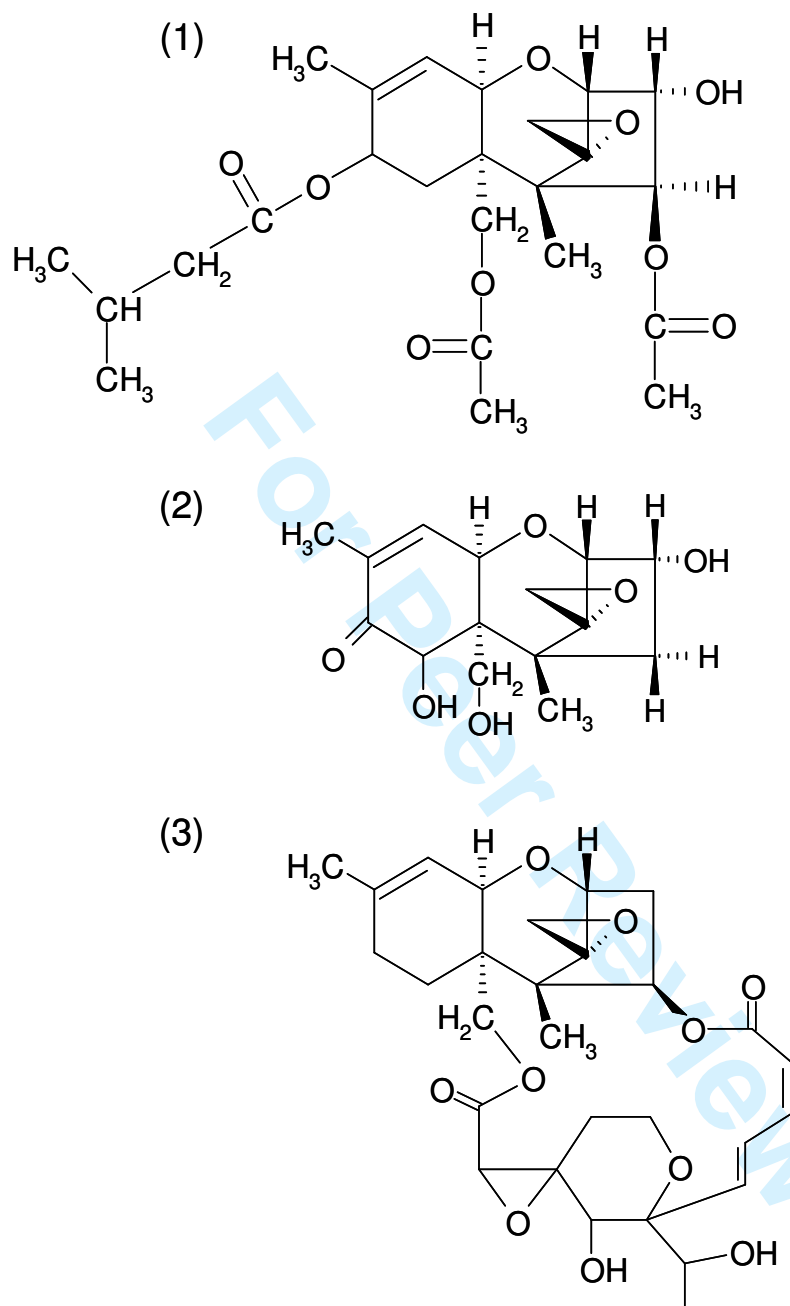


Figure 1. Examples of different structures of trichothecenes; (1) type A: T-2 toxin; (2) type B: DON; (3) type D: satratoxin G (Ueno 1983a)

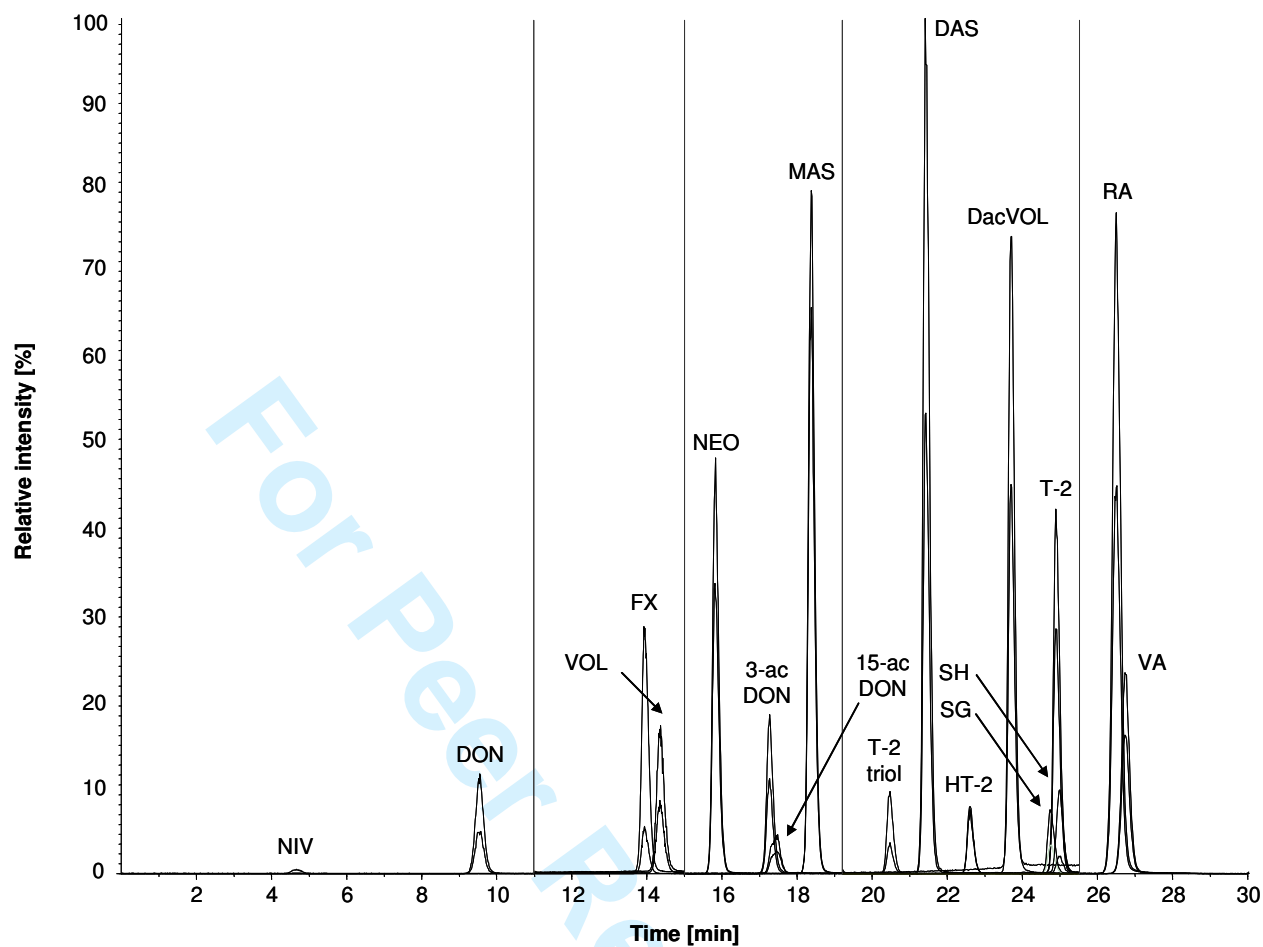


Figure 2. LC-MS/MS chromatogram (separated in five periods) of a multi-trichothecene standard (10 ng ml^{-1}) with two mass transitions per toxin (quantifier and qualifier)

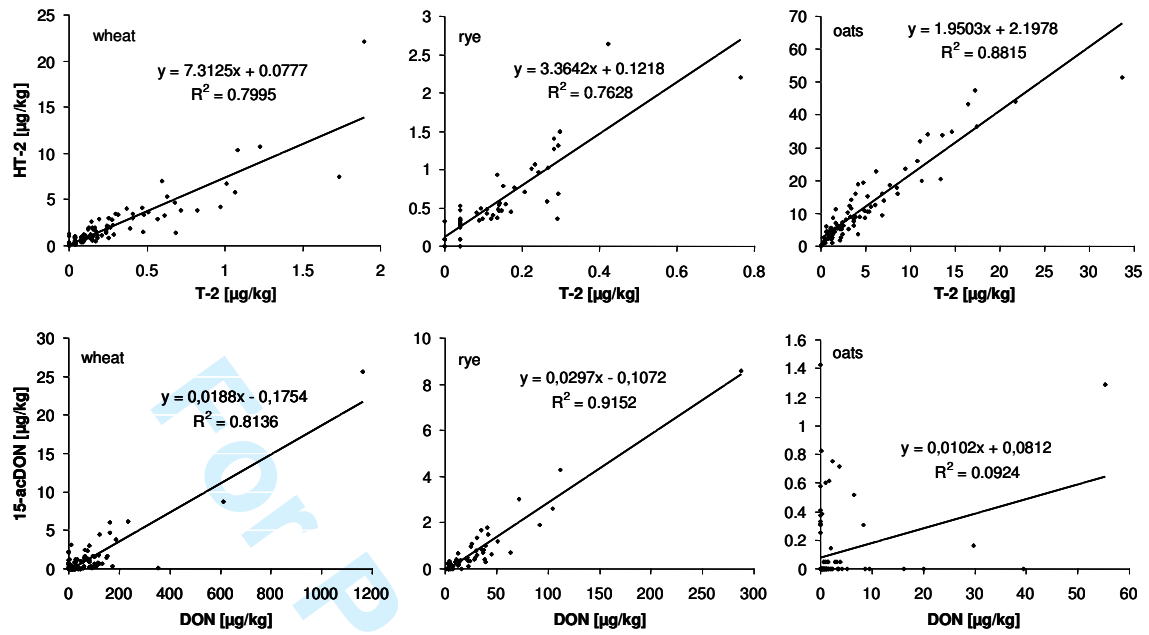


Figure 3. Correlation between T-2 and HT-2 levels (above) and DON and 15-acDON levels (below) in wheat samples (n=130), rye samples (n=61), and oat samples (n=98)

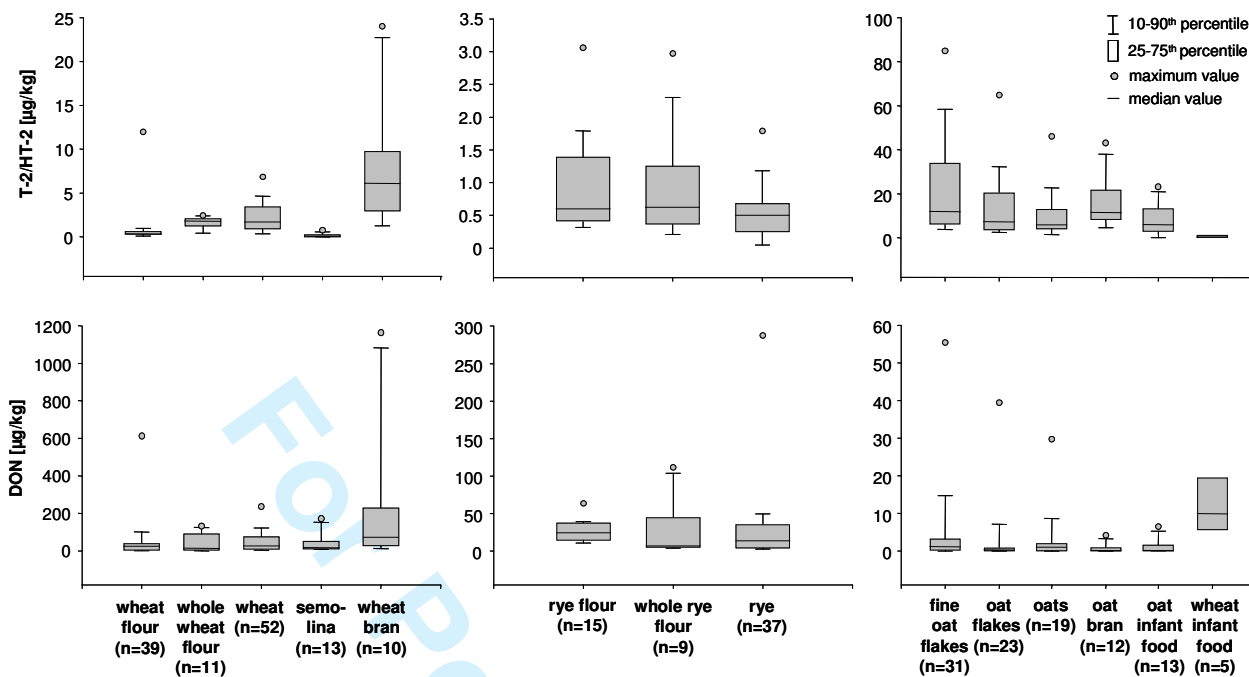


Figure 4. Comparison of contamination levels of T-2/HT-2 and DON in different food commodities of wheat, rye and oats