



HAL
open science

Human metapneumovirus genotypes and Severity of disease in children during a 7-year study in Dijon, France.

Cécile Pitoiset, Magali Darniot, Frédéric Huet, Serge-Ludwig Aho, Pierre P. Pothier, Catherine Manoha

► **To cite this version:**

Cécile Pitoiset, Magali Darniot, Frédéric Huet, Serge-Ludwig Aho, Pierre P. Pothier, et al.. Human metapneumovirus genotypes and Severity of disease in children during a 7-year study in Dijon, France.. Journal of Medical Virology, 2010, 82 (10), pp.1782. 10.1002/jmv.21884 . hal-00570701

HAL Id: hal-00570701

<https://hal.science/hal-00570701>

Submitted on 1 Mar 2011

HAL is a multi-disciplinary open access archive for the deposit and dissemination of scientific research documents, whether they are published or not. The documents may come from teaching and research institutions in France or abroad, or from public or private research centers.

L'archive ouverte pluridisciplinaire **HAL**, est destinée au dépôt et à la diffusion de documents scientifiques de niveau recherche, publiés ou non, émanant des établissements d'enseignement et de recherche français ou étrangers, des laboratoires publics ou privés.



**Human metapneumovirus genotypes and Severity of disease
in children during a 7-year study in Dijon, France.**

Journal:	<i>Journal of Medical Virology</i>
Manuscript ID:	JMV-10-1829.R1
Wiley - Manuscript type:	Research Article
Date Submitted by the Author:	27-May-2010
Complete List of Authors:	Pitoiset, Cécile; CHU Dijon, Virologie Darniot, Magali; CHU Dijon, Virologie Huet, Frédéric; CHU Dijon, Service de Pédiatrie Aho, Serge-Ludwig; CHU Dijon, Service d'Epidémiologie et Hygiène Hospitalière Pothier, Pierre; CHU Dijon, Virologie Manoha, Catherine; CHU Dijon, Virologie
Keywords:	Human metapneumovirus, genotype , disease, severity, X-ray



1
2
3
4
5
6
7
8
9
10
11 **Human metapneumovirus genotypes and severity of disease in young**
12 **children (n=100) during a 7-year study in Dijon Hospital, France.**
13
14

15
16 Cécile Pitoiset¹, Magali Darniot¹, Frédéric Huet², Serge-Ludwig Aho³, Pierre Pothier¹, Catherine
17
18 Manoha^{1*}.

19
20 Laboratoire de Virologie¹, Service de Pédiatrie², Service d'Epidémiologie et Hygiène Hospitalière³,
21
22 Centre Hospitalier Universitaire, Dijon, France
23
24

25
26
27 Corresponding author

28
29 Catherine Manoha

30
31 Centre Hospitalier Universitaire, Plateau Technique de Biologie, 2 Rue Angélique Ducoudray, BP
32
33 37013

34
35 21070 DIJON CEDEX

36
37 Tel number: +33 3 80 29 50 02

38
39 Fax number: +33 3 80 29 36 04

40
41 e-mail: catherine.manoha @chu-dijon.fr
42
43
44
45
46
47
48
49
50
51
52
53
54
55
56
57
58
59
60

ABSTRACT

Human metapneumovirus is a cause of respiratory tract infections at all ages. Our objectives were to analyze the distribution of the A and B genotypes over seven years in Dijon and to investigate a possible association between hMPV genotypes and disease severity. During 2002-2009, we genotyped the 100 isolates from children less than three years old with hMPV. Phylogenetic analysis indicated a change in the distribution of hMPV genotype over the years. Severity was then measured by detailed clinical evaluation. The hospitalization rate was greater when genotype B was involved 72.5% vs. 53.3% ($p = 0.054$). Those infected with genotype B tended to have a higher clinical score, as measured by Vicente et al, 2006, ($p = 0.07$). We showed that, although clinical severity is not clearly associated with hMPV genotype in this study, pathological signs on chest X-ray were observed more often in B subgroup ($p < 0.01$).

INTRODUCTION

After being discovered in the Netherlands in 2001 [van den Hoogen et al., 2001], human metapneumovirus (hMPV) was identified in 3-10% of hospitalized young children with acute respiratory tract infection in many countries worldwide as reviewed by Kahn [Kahn, 2006]. hMPV is a major pathogen that causes acute respiratory illness (ARI) in individuals of all ages. Higher morbidity is observed in young children, the elderly [Boivin et al., 2002; Falsey et al., 2003; van den Hoogen et al., 2003] and immunocompromised adults [O'Gorman et al., 2006; Sumino et al., 2005; Williams et al., 2005]. The clinical characteristics of hMPV infection in children range from mild upper respiratory tract to severe lower respiratory tract disease. The main clinical symptoms include rhinorrhea, cough, wheezing and exacerbation of asthma. hMPV isolates are separated by phylogenetic analysis into two major genotypes (A and B), subdivided in four subgroups (A1, A2, B1, and B2) [Biacchesi et al., 2003; van den Hoogen et al., 2004]. Subgroup A2 has then been subdivided in two lineages A2a and A2b [Huck et al., 2006b]. Each season, hMPV circulation may vary, and hMPV genotypes circulate simultaneously in variable proportions [Gerna et al., 2005; Mackay et al., 2006; Williams et al., 2004]. In this study, we analyzed the distribution of the two hMPV genotypes and determined whether the clinical characteristics and severity of ARI episodes in children under 3 years of age correlated with a particular genotype.

Materials and methods

Collection and analysis of respiratory specimens.

The Hospital of Dijon is of medium size with a capacity of 1700 beds, 20000 children are admitted to the emergency department every year. During the study period, the laboratory received had 659 [95CI:587-729] respiratory samples per year for children under 3 years old.

All respiratory secretion samples (nasopharyngeal secretions, BAL, sputum) from patients presenting at Dijon University Hospital, France, for ARI from December 2002 to February 2005 sent for routine diagnosis of respiratory viruses were tested for hMPV by PCR, whereas from February 2005 to March 2009, samples were first tested by indirect immunofluorescence (IFA) using XD10 hybridoma supernatant as the primary antibody [Manoha et al., 2008].

This assay does not include pre-screening culture methods. Respiratory syncytial virus (RSV), influenza (FLU) and parainfluenza (PI) were detected by IFA (Argène, Varilhes, France) throughout the study.

RT-PCR for hMPV.

RNA was extracted from the samples using TRIzol (Invitrogen, Cergy-Pontoise, France). To detect hMPV, two previously described sets of primers were used. From December 2002 to 2004, the first set of primers amplified a part of the L gene (171bp) [van den Hoogen et al., 2001]. From 2005 to 2009, PCR was based on a second primer set which amplified a part of the F gene (750bp)[van den Hoogen et al., 2004].

Clinical characteristics.

The analysis focused on all subjects under 3 years old who had positive results for hMPV from December 2002 to March 2009. However, those who were co-infected with other respiratory viruses (RSV, FLU or PI) were excluded from the analysis. Records were also excluded when medical physicians suspected respiratory bacterial infections and positive results were found. The clinical characteristics of the 100 included patients were collected

1 mainly retrospectively through reviews of patients' medical file by a reviewer blinded to the
2
3 genotyping result.
4

5 **Clinical severity score (CSS).**

6
7 The severity of the illness was assessed by two different clinical scores, CSS1 and 2. As
8 described by Vicente [Vicente et al., 2006], CSS1 ranged from 0 to 3 on the basis of the need
9 for hospitalization, oxygen saturation <90%, and stay in an intensive care unit stay. As the
10 clinical characteristics of hMPV infection resemble those of RSV, the second CSS was
11 similar to that described by Martinello et al for RSV [Martinello et al., 2002] and ranged
12 from 0 to 6. Two points were given if the patient required mechanical ventilation during the
13 illness, and 1 point was given for each of the following: hospital admission, hospitalization
14 for >5 days, oxygen saturation <90%, and use of supplemental oxygen.
15
16

17 **Sequencing and phylogenetic analysis.**

18
19 PCR-amplified fragments were purified and directly sequenced in both directions using Big
20 Dye Terminator (Applied Biosystems, Foster City, CA) on an automatic DNA sequencer
21 (Applied Biosystems, Foster City, CA). Sequence comparisons were performed on a 102-nt
22 segment of the L gene [van den Hoogen et al., 2001] and/or a 449-nt segment of the F gene
23 [van den Hoogen et al., 2004]. Bionumerics software (Applied Maths, Sint-Martens-Latem,
24 Belgium) was used to determine the hMPV genotypes. Multiple-sequence alignments
25 including some hMPV gene sequences available from GenBank were performed.
26
27 Phylogenetic trees were generated by means of the UPGMA method. Bootstrap support was
28 determined by 100 resamplings of the sequences.
29
30

31 **Statistical analysis.**

32
33 Results were analysed using STATA version 8 (StataCorp, College Station, TX). Statistical
34 differences in the distribution of hMPV genotypes over the years were determined by the χ^2
35 test. The clinical characteristics and severity of illness associated with genotype A and B were
36 compared using 1-way analysis' test or Kruskal-Wallis' test for continuous variables and the χ
37
38
39
40
41
42
43
44
45
46
47
48
49
50
51
52
53
54
55
56
57
58
59
60
2 test for categorical data, as appropriate. Multivariate logistic regression analysis was

1 conducted to estimate independence of potential confounding factors on chest radiographs,
2
3 i.e., signs of respiratory distress, chronic respiratory disease, gastroesophageal reflux disease
4
5 (GERD), and cardiopathy.
6
7
8
9
10
11
12
13
14
15
16
17
18
19
20
21
22
23
24
25
26
27
28
29
30
31
32
33
34
35
36
37
38
39
40
41
42
43
44
45
46
47
48
49
50
51
52
53
54
55
56
57
58
59
60

For Peer Review

RESULTS

Phylogenetic analysis.

On average, 179 respiratory samples [95CI:144-213] were found to be virus positive every year. RSV was predominant, mean: n=150 [95CI: 126-173], followed by influenza A mean: n=26 [95CI:3-48] and hMPV mean: n=13.5 [95CI:7-20]. We analyzed the 100 hMPV-positive isolates identified in children with ARI under 3 years old presenting to the hospital during the seven years of this study, from December 2002 to March 2009. Most cases occurred between December and April, rare cases occurred in May, June or November (Fig.1A). Among the 100 samples, 60% belonged to genotype A and 40% belonged to genotype B: of the 60A, 7 were classified as A1 and 53 as A2; of the 40B, 12 were classified as B1 and 28 as B2 (Fig.2 and 3). For the tree based on the L-gene fragment (Fig.2) which combined one third of the sequences, nucleotide identity between groups A and B was 81.4-82.4%, while it was 91.2-96.1% within group A. No B1 sequence was included in this tree, the nucleotide identity within subgroup B2 was 97.1%-99.5. For the tree based on the F-gene fragment (Fig.3), nucleotide identity between groups A and B was 83.2-85.1%. Within genotype A, nucleotide identity was 92.7-100%, within subgroup A1 (97.3-99.6%) and within subgroup A2 (96.4-100%); within genotype B, nucleotide identity was (95.0-95.8%), within subgroup B1 (98.9-100%), and within subgroup B2 (97.7-100%). Subgroup A was thus more divergent and the existence of two lineages within subtype A2, labelled A2a and A2b, as recently described by Huck [Huck et al., 2006b], was confirmed. As the PCR on the L gene used at the beginning of the study (2002-2004) did not allow us to distinguish lineages, only 27 A2 isolates were classified as either A2a or A2b. Five isolates (24 %) belonged to A2a (97.9-99.4%), and 22 isolates (76 %) belonged to A2b (98.0-99.6%). One strain isolated at the end of February 2008 (Dij-199FEB-08) did not fit into this dichotomy.

The A genotype was predominant during the first two seasons of the study, then both genotypes A and B circulated together with alternative predominance of one or the other

1 genotype (Fig.1B). There was not only a change in the predominant genotype but also a
2
3 change within subgroups (Fig.1C). A2 was detected throughout the study. The A1 subgroup
4
5 was detected only during the first two seasons of the study, whereas the B1 subgroup emerged
6
7 in 2003-2004, peaked the next winter then remained at a low level from 2005-2006 to 2008-
8
9 2009. The B2 subgroup was detected mainly during the last three seasons of the study; its
10
11 predominance was opposite to that of B1.
12

13
14 Strains of genotypes A and B circulated simultaneously throughout the studied seasons
15
16 although the relative distribution of each genotype changed over the years (χ^2 test, $p= 0.001$).
17
18 As lower sensitivity has been reported for the primer set (L6/L7) on the reference strains
19
20 NL/17//00(A2) and NL/1/99 (B1)[Maertzdorf et al., 2004], we may have missed some A2 or
21
22 B1 isolates during the first two seasons. Even when we excluded this period from the
23
24 analysis, the relative distribution of the genotypes (χ^2 test, $p<0.05$) and of the subgroups (χ^2
25
26 test, $p= 0.001$) changed significantly in different years.
27
28
29
30
31
32
33

34 **Clinical manifestations of hMPV infection according to genotype.**

35
36 The sex and age were similar in both groups, with a median age of 5 months for children
37
38 infected with hMPV genotype A and 6.5 months for children infected with hMPV genotype B
39
40 (Table 1). When we compared the clinical characteristics associated with each genotype, we
41
42 found a similar pattern. Major clinical symptoms for both groups included cough (A: 78%; B
43
44 70%), rhinorrhea (A: 53%; B 40%), fever (A: 61%; B: 67%) and wheezing (A: 48%; B
45
46 47.5%) and the main diagnosis was lower respiratory tract disease (LRTD) (A: 75; B: 80%).
47
48
49

50
51 The proportion of hospitalizations was higher for genotype B but without reaching statistical
52
53 significance (A: 53%, B: 72.5%, χ^2 test, $p= 0.054$) and the median duration of hospitalization
54
55 was similar (A: 1.5 days; B: 2.5 days) (Table 1). Pathological findings on chest X-ray were
56
57 more frequent in genotype B (A: 15%; B 44%, $p<0.01$), with most of the children showing
58
59 bronchial wall thickening, alveolar condensation, perihilar haziness or thoracic distension.
60

1 There was no effect of confounding factors on chest radiographs as calculated by logistic
2 regression analysis.
3

4
5 We did not find any association between genotype and any critical factors of severity such as
6 oxygen saturation <90%, intensive care unit stay or use of supplemental oxygen. Both clinical
7 severity scores were slightly higher for genotype B, but the differences were not statistically
8 significant (CSS1: $p = 0.07$, CSS2: $p = 0.24$). Of note, the one and only child who did not
9 present any risk factors (cardiopathy, chronic respiratory disease...) but needed to be
10 hospitalized in an intensive care unit had a B2 genotype. When patients with underlying
11 diseases (cardiopathy, pulmonary disease and GERD) were removed from the analysis, the
12 rate of hospitalization still tended to be higher for genotype B compared to genotype A (A:
13 48%; B 68%; $p = 0.089$).
14

15
16 When the four subgroups were compared, subgroup A1 was associated with the lowest rate
17 and duration of hospitalization, percentage of LRTD as well as lowest values of CSS (Table
18 2). The differences, however, did not reach statistical significance. A1 appeared to induce a
19 milder disease than did the other subgroups. When we restricted the analysis to patients
20 admitted to hospital ($n = 61$), clinical severity among genotypes was similar except for
21 pharyngitis, which was more common in children with genotype B ($p = 0.041$) than in those
22 with genotype A.
23
24
25
26
27
28
29
30
31
32
33
34
35
36
37
38
39
40
41
42
43
44
45
46
47
48
49
50
51
52
53
54
55
56
57
58
59
60

DISCUSSION

hMPV are an important cause of ARI in young children, and in immunocompromised or elderly adults. To date, studies on hMPV have mainly focused on clinical characterization of hMPV infection, but only few reports have studied the influence of genotype on the severity of infection. In this report, we characterized a large cohort of hMPV isolates from children over seven consecutive years and detailed the clinical characteristics of hMPV infection in relation to genotype.

Detection over a long period showed that most of the infections occur between December and April; these results are similar to those showing a higher frequency in late winter and spring [Agapov et al., 2006; Cane et al., 2003; Esper et al., 2004; Rafiefard et al., 2008; Robinson et al., 2005; van den Hoogen et al., 2001]. We also report on the domination of the A genotype over the B genotype (60/40). These results are consistent with those of Rafiefard [Rafiefard et al., 2008] who also identified hMPV genotypes over a long period (five years) in Sweden. More precisely, we showed that genotype A predominated from 2002 to 2004, then both genotypes A and B co-circulated. In 2002-2003 a large number of specimens were positive for genotype A in our study as was the case in several countries. This result may be moderated because of the use of a primer set originally published by Van den Hoogen, 2001 located on L gene which has been shown to amplify hMPV strains of the different sublineages with variable sensitivities [Maertzdorf et al., 2004; Sarasini et al., 2006]. The assay on the F gene presented a higher sensitivity (100X) than the L assay for the four subgroups. The gain in sensitivity obtained with the second pair over the first PCR was probably sufficient to allow the detection of metapneumovirus in children presenting to the hospital with respiratory symptoms and therefore relatively high viral loads, but some B strains may have been missed during the first two seasons.

A change in the predominant genotype was observed over the years as well as a change in subgroups. Within genotypes, subgroup A2 and B2 accounted for most cases. A1 cases were

1 detected in the early years, mainly 2001-2002 after which only a few A1 cases were
2
3 reported worldwide in 2003-2004 [Huck et al., 2006b; Ludewick et al., 2005; Mackay et al.,
4
5 2006; Rafiefard et al., 2008]. A1 cases were no longer reported from 2004 to 2006 [Mackay et
6
7 al., 2006; Matsuzaki et al., 2008]. Concurrently, subgroup B1 emerged to become the
8
9 predominant subgroup in 2004-2005 in South Africa [Ludewick et al., 2005] Australia
10
11 [Mackay et al., 2006], Japan [Matsuzaki et al., 2008] and France as shown in this study. This
12
13 underlines the fact that the prevalence of B1 was similar worldwide. Similar observations on
14
15 changes in predominant circulating strains have led to suggestions that there is evasion of pre-
16
17 existing immunity [Agapov et al., 2006; Ludewick et al., 2005], which can be attributed to
18
19 changes in immunity of the population in response to antigenic differences. Despite the
20
21 stability of lineages over the years, a region of considerable variation (amino acids 260-300)
22
23 on the fusion protein, analogous to a major antigenic region of the RSV fusion protein, has
24
25 been identified [Yang et al., 2009]. This relative instability could be a way for the virus to
26
27 escape the immune response. However, we cannot exclude the possibility that the dynamics
28
29 of the virus population may vary from one genotype to another and from one year to another
30
31 depending on environmental factors.
32
33

34
35 Within lineage A2, two clusters, designated A2a and A2b, have been identified [Huck et al.,
36
37 2006a; Huck et al., 2006b], with approximately 70% of the strains detected from 2002 to 2004
38
39 classified as A2b. Distinction between A2b and A2a strains was reported during one season
40
41 in Croatia 2005/2006 [Ljubin-Sternak et al., 2008]. In our study, RT-PCR analysis of the F
42
43 fragment gene used from 2004 to 2009 allowed us to show that A2a and A2b were prevalent
44
45 during this period and co-circulated. A majority of isolates belonged to subgroup A2b. At the
46
47 end of the study, one isolate was on a separate branch from A2a and A2b. It may represent a
48
49 new variant within genotype A and may signify an attempt of the virus to escape the current
50
51 immune response of the population.
52
53

54
55 In the present study, we sought to determine whether the hMPV genotype was associated with
56
57 disease severity. We did not find any major differences in the clinical pattern of hMPV
58
59
60

1 infection in children less than 3 for each of the genotypes of hMPV suggesting that
2
3 variations in viral genotype do not appear to be a major causal factor of differences in severity
4
5 of the illness. Abnormalities on chest radiographs have been shown to occur frequently in
6
7 children infected with hMPV [Esper et al., 2003; Wilkesmann et al., 2006; Williams et al.,
8
9 2004]; in the present study, we showed a higher frequency for genotype B.

10
11
12 Three teams have screened a high number of isolates to look for correlations between
13
14 genotype and disease severity in small children. None reported any significant differences
15
16 between clinical data according to genotypes [Agapov et al., 2006; Sloots et al., 2006; Vicente
17
18 et al., 2006]. However, a difference in the severity index as well as in the diagnosis of
19
20 pneumonia was reported [Vicente et al., 2006], suggesting that hMPV genotype A may be
21
22 more pathogenic than hMPV genotype B. Although we studied the same population, that is
23
24 children < 3 years old, and applied the same severity index as described by Vicente, we did
25
26 not find a correlation between genotype and severity score. The conclusion of these studies,
27
28 which included a large number of strains was that there is no clear link between viral
29
30 genotype and susceptibility to more severe hMPV infection. Our study was based on
31
32 metapneumovirus, and most of the main causes of coinfections, namely RSV, Flu and
33
34 parainfluenza, were excluded. We did not test for human bocavirus, adenoviruses,
35
36 coronavirus and rhinoviruses. We probably missed some co-infections, but the clinical impact
37
38 of viral co-infection involving hMPV and these viruses is unclear. Sloots et al, 2006 found no
39
40 significant difference in disease severity between hMPV infected patients with a coinfection
41
42 and those without [Sloots et al., 2006]. Only hMPV-RSV dual infections are thought to be
43
44 more severe [Semple et al., 2005].

45
46
47 An association between hMPV infection and asthma has been reported by some authors who
48
49 suggested that hMPV is a causative agent of acute wheezing in young children [Jartti et al.,
50
51 2002; Manoha et al., 2007; von Linstow et al., 2004]. We did not find any difference in
52
53 asthma between children infected with hMPV genotype A and children infected with
54
55 genotype B. However, when we compared the four subgroups, asthma was only observed in
56
57
58
59
60

1 patients with subgroup A2 and B2. Rhinoviruses are frequently associated with LRTD and
2
3 asthmatic exacerbations. We found no significant difference regarding asthma according to
4
5 genotype, but we cannot exclude the possibility that the presence of another virus, in
6
7 particular rhinovirus, contributed to this clinical presentation. Recently, Matsuzaki et al, 2008
8
9 [Matsuzaki et al., 2008] compared the clinical characteristics of A2, B1 and B2 hMPV
10
11 infections for 85 outpatients under 15 years old over 3 seasons and showed that wheezing was
12
13 statistically less frequent in A2 than in B1 and B2. They also reported a higher frequency of
14
15 laryngitis in children with B1.
16
17

18
19 Our study included samples collected over several seasons, which comprehensively
20
21 characterize the clinical presentation of hMPV infection in children who present to hospital
22
23 emergency departments. However, no clear relationship between one hMPV genotype and
24
25 disease severity has been established. One possibility could be that the virulence is maintained
26
27 by evolution in subgroup predominance, leading to progression from rather mild infections
28
29 often due to the A1 subgroup to lower RTI mainly due to A2 and B2. However, other factors
30
31 such as the viral load [Bosis et al., 2008] may be involved in disease severity. Investigation
32
33 of a large panel of isolates as well as predicting factors of illness severity are required to gain
34
35 insights into the molecular epidemiology of hMPV and viral pathogenesis.
36
37
38
39
40
41
42
43
44
45
46
47
48
49
50
51
52
53
54
55
56
57
58
59
60

Acknowledgments

This work was supported by the Centre Hospitalier Universitaire of Dijon. We thank Jean-Baptiste Bour for helpful comments, Emmanuel Florentin for statistics on virology laboratory data and Philip Bastable for editorial assistance.

Authors have no conflict of interest related to this article

For Peer Review

1
2
3
4
5
6
7
8
9
10
11
12
13
14
15
16
17
18
19
20
21
22
23
24
25
26
27
28
29
30
31
32
33
34
35
36
37
38
39
40
41
42
43
44
45
46
47
48
49
50
51
52
53
54
55
56
57
58
59
60
REFERENCES

- Agapov E, Sumino KC, Gaudreault-Keener M, Storch GA, Holtzman MJ. 2006. Genetic variability of human metapneumovirus infection: evidence of a shift in viral genotype without a change in illness. *J Infect Dis* 193(3):396-403.
- Biacchesi S, Skiadopoulou MH, Boivin G, Hanson CT, Murphy BR, Collins PL, Buchholz UJ. 2003. Genetic diversity between human metapneumovirus subgroups. *Virology* 315(1):1-9.
- Boivin G, Abed Y, Pelletier G, Ruel L, Moisan D, Cote S, Peret TC, Erdman DD, Anderson LJ. 2002. Virological features and clinical manifestations associated with human metapneumovirus: a new paramyxovirus responsible for acute respiratory-tract infections in all age groups. *J Infect Dis* 186(9):1330-1334.
- Bosis S, Esposito S, Osterhaus AD, Tremolati E, Begliatti E, Tagliabue C, Corti F, Principi N, Niesters HG. 2008. Association between high nasopharyngeal viral load and disease severity in children with human metapneumovirus infection. *J Clin Virol* 42(3):286-290.
- Cane PA, van den Hoogen BG, Chakrabarti S, Fegan CD, Osterhaus AD. 2003. Human metapneumovirus in a haematopoietic stem cell transplant recipient with fatal lower respiratory tract disease. *Bone Marrow Transplant* 31(4):309-310.
- Esper F, Boucher D, Weibel C, Martinello RA, Kahn JS. 2003. Human metapneumovirus infection in the United States: clinical manifestations associated with a newly emerging respiratory infection in children. *Pediatrics* 111(6 Pt 1):1407-1410.
- Esper F, Martinello RA, Boucher D, Weibel C, Ferguson D, Landry ML, Kahn JS. 2004. A 1-year experience with human metapneumovirus in children aged <5 years. *J Infect Dis* 189(8):1388-1396.
- Falsey AR, Erdman D, Anderson LJ, Walsh EE. 2003. Human metapneumovirus infections in young and elderly adults. *J Infect Dis* 187(5):785-790.
- Gerna G, Campanini G, Rovida F, Sarasini A, Lilleri D, Paolucci S, Marchi A, Baldanti F, Revello MG. 2005. Changing circulation rate of human metapneumovirus strains and types among hospitalized pediatric patients during three consecutive winter-spring seasons. Brief report. *Arch Virol* 150(11):2365-2375.
- Huck B, Egger M, Bertz H, Peyerl-Hoffman G, Kern WV, Neumann-Haefelin D, Falcone V. 2006a. Human metapneumovirus infection in a hematopoietic stem cell transplant recipient with relapsed multiple myeloma and rapidly progressing lung cancer. *J Clin Microbiol* 44(6):2300-2303.
- Huck B, Scharf G, Neumann-Haefelin D, Puppe W, Weigl J, Falcone V. 2006b. Novel human metapneumovirus sublineage. *Emerg Infect Dis* 12(1):147-150.
- Jartti T, van den Hoogen B, Garofalo RP, Osterhaus AD, Ruuskanen O. 2002. Metapneumovirus and acute wheezing in children. *Lancet* 360(9343):1393-1394.
- Kahn JS. 2006. Epidemiology of human metapneumovirus. *Clin Microbiol Rev* 19(3):546-557.
- Ljubin-Sternak S, Santak M, Cepin-Bogovic J, Bace A, Vojnovic G, Mlinaric-Galinovic G, Forcic D, Drazenovic V, Falsey AR. 2008. Detection of genetic lineages of human metapneumovirus in Croatia during the winter season 2005/2006. *J Med Virol* 80(7):1282-1287.
- Ludewick HP, Abed Y, van Niekerk N, Boivin G, Klugman KP, Madhi SA. 2005. Human metapneumovirus genetic variability, South Africa. *Emerg Infect Dis* 11(7):1074-1078.
- Mackay IM, Bialasiewicz S, Jacob KC, McQueen E, Arden KE, Nissen MD, Sloots TP. 2006. Genetic diversity of human metapneumovirus over 4 consecutive years in Australia. *J Infect Dis* 193(12):1630-1633.

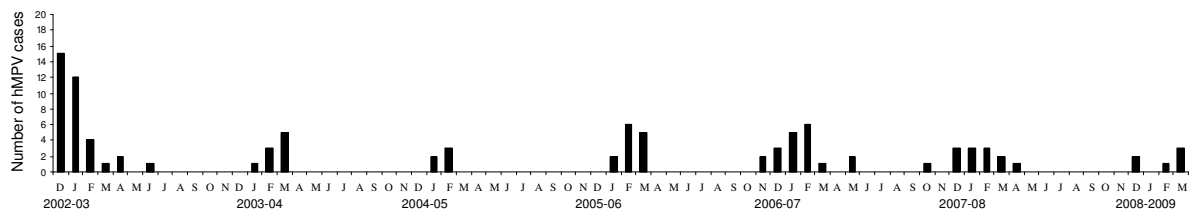
- 1 Maertzdorf J, Wang CK, Brown JB, Quinto JD, Chu M, de Graaf M, van den Hoogen BG,
2 Spaete R, Osterhaus AD, Fouchier RA. 2004. Real-time reverse transcriptase PCR
3 assay for detection of human metapneumoviruses from all known genetic lineages. *J*
4 *Clin Microbiol* 42(3):981-986.
- 5 Manoha C, Bour JB, Pitoiset C, Darniot M, Aho S, Pothier P. 2008. Rapid and sensitive
6 detection of metapneumovirus in clinical specimens by indirect fluorescence assay
7 using a monoclonal antibody. *J Med Virol* 80(1):154-158.
- 8 Manoha C, Espinosa S, Aho SL, Huet F, Pothier P. 2007. Epidemiological and clinical
9 features of hMPV, RSV and RVs infections in young children. *J Clin Virol* 38(3):221-
10 226.
- 11 Martinello RA, Chen MD, Weibel C, Kahn JS. 2002. Correlation between respiratory
12 syncytial virus genotype and severity of illness. *J Infect Dis* 186(6):839-842.
- 13 Matsuzaki Y, Itagaki T, Abiko C, Aoki Y, Suto A, Mizuta K. 2008. Clinical impact of human
14 metapneumovirus genotypes and genotype-specific seroprevalence in Yamagata,
15 Japan. *J Med Virol* 80(6):1084-1089.
- 16 O'Gorman C, McHenry E, Coyle PV. 2006. Human metapneumovirus in adults: a short case
17 series. *Eur J Clin Microbiol Infect Dis* 25(3):190-192.
- 18 Rafiefard F, Yun Z, Orvell C. 2008. Epidemiologic characteristics and seasonal distribution of
19 human metapneumovirus infections in five epidemic seasons in Stockholm, Sweden,
20 2002-2006. *J Med Virol* 80(9):1631-1638.
- 21 Robinson JL, Lee BE, Bastien N, Li Y. 2005. Seasonality and clinical features of human
22 metapneumovirus infection in children in Northern Alberta. *J Med Virol* 76(1):98-105.
- 23 Sarasini A, Percivalle E, Rovida F, Campanini G, Genini E, Torsellini M, Paolucci S,
24 Baldanti F, Marchi A, Grazia Revello M, Gerna G. 2006. Detection and pathogenicity
25 of human metapneumovirus respiratory infection in pediatric Italian patients during a
26 winter--spring season. *J Clin Virol* 35(1):59-68.
- 27 Semple MG, Cowell A, Dove W, Greensill J, McNamara PS, Halfhide C, Shears P, Smyth
28 RL, Hart CA. 2005. Dual infection of infants by human metapneumovirus and human
29 respiratory syncytial virus is strongly associated with severe bronchiolitis. *J Infect Dis*
30 191(3):382-386.
- 31 Sloots TP, Mackay IM, Bialasiewicz S, Jacob KC, McQueen E, Harnett GB, Siebert DJ,
32 Masters BI, Young PR, Nissen MD. 2006. Human metapneumovirus, Australia, 2001-
33 2004. *Emerg Infect Dis* 12(8):1263-1266.
- 34 Sumino KC, Agapov E, Pierce RA, Trulock EP, Pfeifer JD, Ritter JH, Gaudreault-Keener M,
35 Storch GA, Holtzman MJ. 2005. Detection of severe human metapneumovirus
36 infection by real-time polymerase chain reaction and histopathological assessment. *J*
37 *Infect Dis* 192(6):1052-1060.
- 38 van den Hoogen BG, de Jong JC, Groen J, Kuiken T, de Groot R, Fouchier RA, Osterhaus
39 AD. 2001. A newly discovered human pneumovirus isolated from young children with
40 respiratory tract disease. *Nat Med* 7(6):719-724.
- 41 van den Hoogen BG, Herfst S, Sprong L, Cane PA, Forleo-Neto E, de Swart RL, Osterhaus
42 AD, Fouchier RA. 2004. Antigenic and genetic variability of human
43 metapneumoviruses. *Emerg Infect Dis* 10(4):658-666.
- 44 van den Hoogen BG, van Doornum GJ, Fockens JC, Cornelissen JJ, Beyer WE, de Groot R,
45 Osterhaus AD, Fouchier RA. 2003. Prevalence and clinical symptoms of human
46 metapneumovirus infection in hospitalized patients. *J Infect Dis* 188(10):1571-1577.
- 47 Vicente D, Montes M, Cilla G, Perez-Yarza EG, Perez-Trallero E. 2006. Differences in
48 clinical severity between genotype A and genotype B human metapneumovirus
49 infection in children. *Clin Infect Dis* 42(12):e111-113.
- 50 von Linstow ML, Larsen HH, Eugen-Olsen J, Koch A, Nordmann Winther T, Meyer AM,
51 Westh H, Lundgren B, Melbye M, Høgh B. 2004. Human metapneumovirus and
52 respiratory syncytial virus in hospitalized danish children with acute respiratory tract
53 infection. *Scand J Infect Dis* 36(8):578-584.

- 1 Wilkesmann A, Schildgen O, Eis-Hubinger AM, Geikowski T, Glatzel T, Lentze MJ, Bode
2 U, Simon A. 2006. Human metapneumovirus infections cause similar symptoms and
3 clinical severity as respiratory syncytial virus infections. *Eur J Pediatr* 165(7):467-475.
- 4 Williams JV, Harris PA, Tollefson SJ, Halburnt-Rush LL, Pingsterhaus JM, Edwards KM,
5 Wright PF, Crowe JE, Jr. 2004. Human metapneumovirus and lower respiratory tract
6 disease in otherwise healthy infants and children. *N Engl J Med* 350(5):443-450.
- 7 Williams JV, Martino R, Rabella N, Otegui M, Parody R, Heck JM, Crowe JE, Jr. 2005. A
8 prospective study comparing human metapneumovirus with other respiratory viruses
9 in adults with hematologic malignancies and respiratory tract infections. *J Infect Dis*
10 192(6):1061-1065.
- 11 Yang CF, Wang CK, Tollefson SJ, Piyaratna R, Lintao LD, Chu M, Liem A, Mark M, Spaete
12 RR, Crowe JE, Jr., Williams JV. 2009. Genetic diversity and evolution of human
13 metapneumovirus fusion protein over twenty years. *Virol J* 6:138.
- 14
15
16
17
18
19
20
21
22
23
24
25
26
27
28
29
30
31
32
33
34
35
36
37
38
39
40
41
42
43
44
45
46
47
48
49
50
51
52
53
54
55
56
57
58
59
60

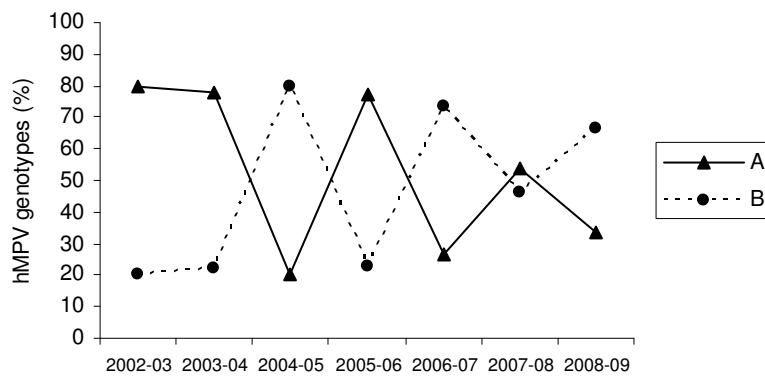
For Peer Review

Fig. 1. Human metapneumovirus (hMPV) in clinical specimens from children under 3 years old from December 2002 to March 2009.

A



B



C

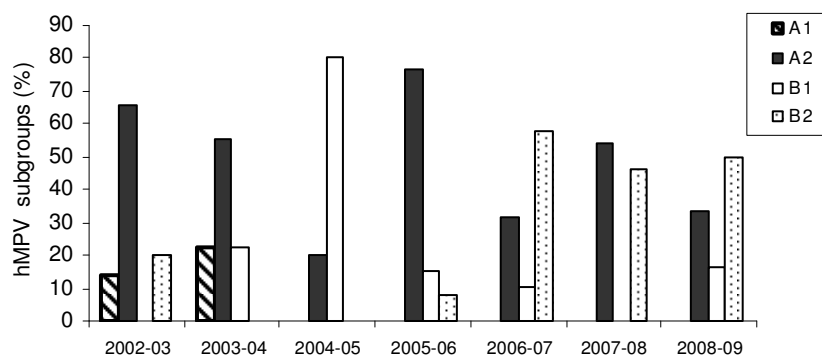


Fig. 2. Phylogenetic analysis of nucleotide sequences from the partial L gene.

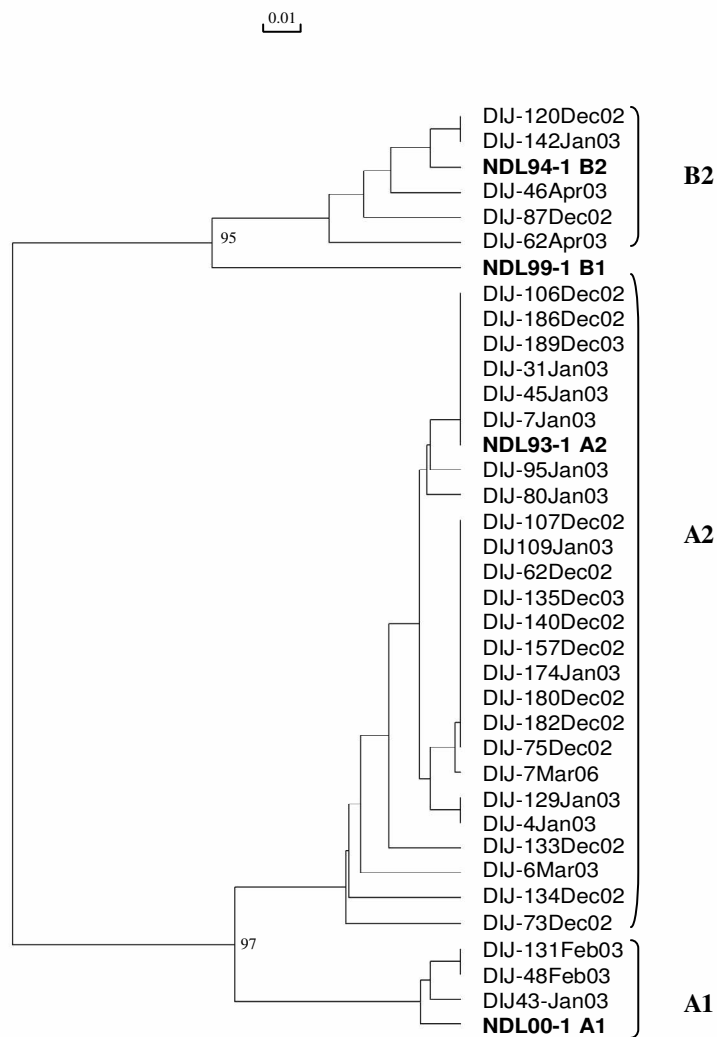


Fig. 3. Phylogenetic analysis of nucleotide sequences from the partial F gene.

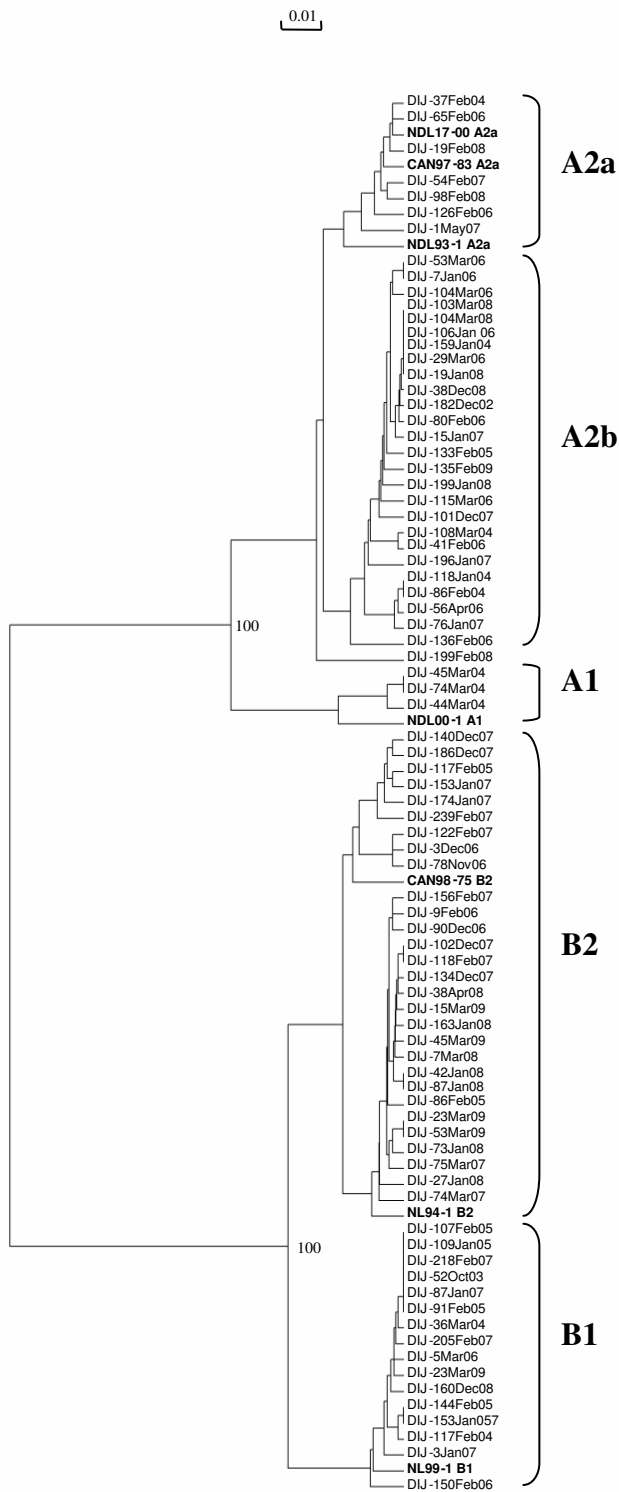


Table 1. Characteristics of patients with human metapneumovirus (hMPV) according to genotype A or B.

Genotype no = 100	A 60	%	B 40	%	
Sex (male)	40	66.7	22	55.00	
Median age (months)	5		6.5		
Rhinorrhea	32	53.33	16	40	
Cough	47	78.33	28	70	
Pharyngitis	18	30	12	30	
Otitis	9	15	8	20.51	
Fever	36	61.02	26	66.67	
Body temperature (mean)	38.3+/-0.9		38.4+/-1		
Body temperature >38.5	21	37.5	18	47.37	
Poor feeding	23	38.98	21	53.85	
Vomiting	13	21.67	7	17.5	
Diarrhea	11	18.33	4	10	
Wheezing	29	48.33	19	47.5	
Signs of Respiratory distress	25	41.67	24	60	χ^2 test, p= 0.072
Respiratory failure	4	6.67	1	2.5	
Oxygen saturation	94.1+/-4.7		92.6+/-6		
Oxygen saturation <90	12	22.64	12	32.43	
Oxygen treatment	14	23.33	13	32.5	
Duration of oxygen treatment (mean. days)	0.76+/-1.7		0.56+/-1.1		
Bronchitis	7	11.86	3	7.69	
Bronchiolitis	37	62.71	28	71.05	
LRTD	45	75	32	80	
Radiological signs in chest	6	14.63	15	44.12	χ^2 test, p= 0.005
Hospitalization for ARI	32	53.33	29	72.5	χ^2 test, p= 0.054
Median duration of hospitalization(days)	1.5		2.5		
Hospitalization > 5days	14	23.33	9	22.5	
Stay in intensive care unit	0		1		
Prematurity (<32 weeks)	12	20	10	25	
Cardiopathy	1	1.67	5	12.5	χ^2 test, p= 0.025
Asthma	9	15	7	17.5	
Chronic respiratory disease	4	6.67	3	7.5	
GERD	2	3.39	8	20	χ^2 test, p= 0.007
Smoking in family	9	15	5	12.5	
Asthma in family	10	16.67	7	17.5	
CSS1(mean)	0.77		1.07		1-way, p= 0.068
CSS2(mean)	1.2		1.55		

Table 2. Significant or relevant differences according to hMPV subgroups.

Subgroups no.= 100	A1 7	%	A2 53	%	B1 12	%	B2 28	%	
Sex(male)	6	85.71	34	64.15	5	41.67	17	60.71	
Median age (months)	4		5		9.5		5		
Rhinorrhea	6	85.71	26	49.06	7	58.33	9	32.14	χ^2 test, p= 0.062
Body temperature >38.5	5	83.33	16	32	8	66.67	10	38.46	χ^2 test, p= 0.024
LRTD	4	57.14	41	77.36	10	83.33	22	78.57	
Radiological signs in chest	0	0	6	17.14	6	66.67	9	36	χ^2 test, p= 0.008
Hospitalization for ARI	2	28.57	30	56.6	7	58.33	22	78.57	χ^2 test, p= 0.066
Median duration of hospitalization (days)	0		2		1.5		2.5		
Stay in intensive care unit	0		0		0		1		
Asthma	0		9	16.98	0	16.67	7	25.93	
GERD	0		2	3.85	2	16.67	6	21.43	χ^2 test, p= 0.056
CSS1 (mean)	0.43		0.81		1		1.11		
CSS2 (mean)	0.71		1.26		1.58		1.54		

Legends

Fig. 1: Human metapneumovirus (hMPV) in clinical specimens from children under 3 years old from December 2002 to March 2009.

A) Monthly detection of hMPV

B) Distribution of hMPV genotypes over a 7-year period (A (continuous line), B (hatched line))

C) Distribution of hMPV subgroups over a 7-year period (A1 (hatched), A2 (black), B1 (white), B2 (with points)).

Fig. 2: Phylogenetic analysis of nucleotide sequences from the partial L gene.

Isolates are indicated by the town of origin (Dijon), order of isolate number, month and year of isolation (e.g., DIJ-95JAN-07). The tree generated includes four representative sequences, in bold, from isolates from the Netherlands (NL-) (GenBank accession n°.AF371332, AF371333, AF371335, AF371337)

Fig. 3: Phylogenetic analysis of nucleotide sequences from the partial F gene.

Isolates are indicated by the town of origin (Dijon), order of isolate number, month and year of isolation (e.g., DIJ-95JAN-07). The tree generated includes five representative sequences, in bold, from isolates from the Netherlands (NL-) and two from Canada (GenBank accession n°. AY304360, AF371341, AF371337, AF371341, AY 304361, AY145289, AY145296).

Table 1. Characteristics of patients with human metapneumovirus (hMPV) according to genotype A or B.

Percentages are given relative to cases of genotype A (n=60) or B (n=40). For the following item, radiological signs in chest, only children who had a chest X-ray have been taken into account. Chronic respiratory disease was measured as binary variable and included bronchopulmonary dysplasia and one case of lung agenesis; GERD: gastroesophageal reflux disease

1 Asthma in the family was defined as a history of medical diagnosis of asthma in first-
2
3 degree-relatives. Significant differences are in bold. Differences close to significance are also
4
5 indicated.
6
7

8 **Table 2. Significant or relevant differences according to hMPV subgroups.**

9
10 Percentages are given relative to cases of A1, A2, B1 or B2 subgroups. For the following
11
12 item, radiological signs in chest, only children who had a chest X-ray have been taken into
13
14 account. Significant differences are in bold. Differences close to significance are also
15
16 indicated
17
18
19
20
21
22
23
24
25
26
27
28
29
30
31
32
33
34
35
36
37
38
39
40
41
42
43
44
45
46
47
48
49
50
51
52
53
54
55
56
57
58
59
60

For Peer Review