



HAL
open science

The microenvironment differentially impairs passive and active immunotherapy in Chronic lymphocytic leukemia - Potential therapeutic synergism of CXCR4 antagonists

Maike Buchner, Philipp Brantner, Gabriele Prinz, Meike Burger, Constance Baer, Christine Dierks, Dietmar Pfeifer, Roland Mertelsmann, John G Gribben, Hendrik Veelken, et al.

► To cite this version:

Maike Buchner, Philipp Brantner, Gabriele Prinz, Meike Burger, Constance Baer, et al.. The microenvironment differentially impairs passive and active immunotherapy in Chronic lymphocytic leukemia - Potential therapeutic synergism of CXCR4 antagonists. *British Journal of Haematology*, 2010, 151 (2), pp.167. 10.1111/j.1365-2141.2010.08316.x . hal-00569407

HAL Id: hal-00569407

<https://hal.science/hal-00569407>

Submitted on 25 Feb 2011

HAL is a multi-disciplinary open access archive for the deposit and dissemination of scientific research documents, whether they are published or not. The documents may come from teaching and research institutions in France or abroad, or from public or private research centers.

L'archive ouverte pluridisciplinaire **HAL**, est destinée au dépôt et à la diffusion de documents scientifiques de niveau recherche, publiés ou non, émanant des établissements d'enseignement et de recherche français ou étrangers, des laboratoires publics ou privés.



The microenvironment differentially impairs passive and active immunotherapy in Chronic lymphocytic leukemia - Potential therapeutic synergism of CXCR4 antagonists

| | |
|-------------------------------|--|
| Journal: | <i>British Journal of Haematology</i> |
| Manuscript ID: | BJH-2010-00258.R1 |
| Manuscript Type: | Ordinary Papers |
| Date Submitted by the Author: | 26-May-2010 |
| Complete List of Authors: | Buchner, Maike; University Hospital Freiburg, Medical Department I Brantner, Philipp; University Hospital Freiburg, Medical Department I Prinz, Gabriele; University Hospital Freiburg, Medical Department I Burger, Meike; University Hospital Freiburg, Medical Department I Baer, Constance; University Hospital Freiburg, Medical Department I Dierks, Christine; University Hospital Freiburg, Medical Department I Pfeifer, Dietmar; University Hospital Freiburg, Medical Department I Mertelsmann, Roland; University Hospital Freiburg, Medical Department I Gribben, John; Barts and The London School of Medicine, Institute of Cancer Veelken, Hendrik; University Hospital Freiburg, Medical Department I Zirlik, Katja; University Hospital Freiburg, Medical Department I |
| Key Words: | CHRONIC LYMPHOCYTIC LEUKAEMIA, STROMAL CELLS, IMMUNOTHERAPY, DRUG RESISTANCE, CHEMOKINES |
| | |

The microenvironment differentially impairs passive and active immunotherapy in
Chronic Lymphocytic Leukemia -
CXCR4 antagonists as potential adjuvants for monoclonal antibodies

Running title: Microenvironmental impact on immunotherapy in CLL

Maike Buchner¹, Philipp Brantner¹, **Natalie Stickel**¹, Gabriele Prinz¹, Meike Burger¹,
Constance Bär¹, Christine Dierks¹, Dietmar Pfeifer¹, **Ariane Ott**¹, Roland Mertelsmann¹, John
G. Gribben², Hendrik Veelken¹, Katja Zirlik¹

¹Department of Hematology and Oncology, University Medical Center Freiburg, Freiburg,
Germany

²Barts and The London School of Medicine, Institute of Cancer, London, United Kingdom

Corresponding Author: Katja Zirlik, MD
Department of Hematology/Oncology
University Medical Center Freiburg
Hugstetter Strasse 55
79106 Freiburg, Germany
Phone: +49-761-270-7181
Fax: +49-761-270-7177
e-mail: katja.zirlik@uniklinik-freiburg.de

Number of figures: 5

Supporting information figures: 7, Supporting information table: 1

Number of references: 61

Word count: 3991, Abstract word count: 191

Buchner et al.

Microenvironmental impact on immunotherapy in CLL

Summary

Direct contact with stromal cells protects chronic lymphocytic leukemia (CLL) B cells from chemotherapy-induced apoptosis *in vitro*. Blockade of CXCR4 signaling antagonizes stroma-mediated interactions and restores CLL chemosensitivity. ***In vivo*, administration of CXCR4 antagonists effectively mobilizes hematopoietic progenitor cells.** Therefore, combinations of CXCR4 blockade with cytoreductive treatment with selective activity on CLL cells may avoid potential hematotoxicity. Hence, we tested CXCR4 antagonists in the context of passive and active immunotherapeutic approaches. We evaluated how efficiently rituximab, alemtuzumab, and cytotoxic T cells killed CLL cells co-cultured with stromal cells in the presence and absence of a CXCR4 antagonist. Stromal cell contact attenuated rituximab- and alemtuzumab-induced complement-dependent cytotoxicity (CDC) of CLL cells. Addition of CXCR4 antagonists abrogated the protective effect of stroma. In contrast, stromal cells did not impair antibody-dependent cell-mediated cytotoxicity (ADCC) and cytotoxicity induced by activated T cells. Destruction of microtubules in CLL target cells restored the protective effect of stroma coculture for CLL cells during NK cell attack by preventing mitochondrial relocalization towards the immunological synapse. Our data identify the combination of CXCR4 antagonists with passive - but not active - immunotherapy as a promising potential treatment concept in CLL.

Buchner et al.

Microenvironmental impact on immunotherapy in CLL

Introduction

B cell chronic lymphocytic leukemia (B-CLL) represents one of the most commonly diagnosed lymphoid malignancies in Western countries, and is characterized by continuous accumulation of mature, CD5⁺ B cells. CLL remains incurable with cytoreductive therapy. The microenvironment in bone marrow and secondary lymphoid tissues favours survival and chemoresistance of CLL cells by upregulation of antiapoptotic molecules such as Mcl-1 and Bcl-xL (Caligaris-Cappio 2003, Chiorazzi, *et al* 2005). In contrast to the prolonged survival *in vivo*, CLL cells undergo rapid apoptosis in the absence of stroma *in vitro*. Mimicking the *in vivo* microenvironment by stromal cell coculture protects CLL cells from spontaneous and chemotherapy-induced apoptosis *in vitro* (Burger, *et al* 2005, Kurtova, *et al* 2009). This cell contact-mediated chemoresistance is described for other malignancies as well and is termed "cell adhesion-mediated drug resistance" (CAM-DR) (Damiano, *et al* 1999). Residual leukemic cells protected by stromal cells in the bone marrow or lymphatic tissue are thought to contribute to disease relapse after chemotherapy.

The homing of CLL cells towards the protective niches is mediated by the crosstalk between the chemokine CXCL12 and its receptor CXCR4. CXCR4 antagonists resensitize CLL cells to spontaneous and chemotherapy-induced apoptosis during stromal coculture *in vitro* (Burger, *et al* 1999, Burger, *et al* 2005). Combination therapy with CXCR4 antagonists is therefore predicted to enhance efficacy of conventional cytoreductive treatment in CLL (Burger and Kipps 2006). On the other hand, the CXCL12-CXCR4 interaction provides a physiological homing signal to the bone marrow for hematopoietic stem cells (HSCs). **Thus, administration of CXCR4 antagonists mobilizes HSCs to the periphery and may render them sensitive to concomitant chemotherapy.** To avoid this risk of stem cell toxicity, combination of CXCR4 antagonists with antineoplastic agents targeted to CLL cells would be conceptually advantageous.

Due to their exclusive action on cells of **leukocyte lineages without decreasing HSC viability (Lim, *et al* 2008)**, passive and active immunotherapy represent promising treatment strategies in CLL (Faderl, *et al* 2005, Kater, *et al* 2007, Stanglmaier, *et al* 2004). The

Buchner et al.

Microenvironmental impact on immunotherapy in CLL

monoclonal anti-CD52 and anti-CD20 antibodies (mAb) alemtuzumab (ALT, Campath-1H) and rituximab (RIT) have been approved for passive immunotherapy of relapsed or refractory CLL. **Their precise mode of action is not fully understood. Monoclonal antibodies are capable to activate the classic complement pathway which results in pore formation and target cell lysis (Zipfel and Skerka 2009), known as complement dependent cytotoxicity (CDC). Furthermore, antibodies may bind to Fc γ receptors on various effector cells, such as natural killer (NK) cells, fixed macrophages, dendritic cells (DCs), neutrophils, and eosinophils (Nimmerjahn and Ravetch 2006). Efficient lysis of the obsoned cells by these effectors has been termed antibody-dependent cell-mediated cytotoxicity (ADCC). Additional direct apoptotic effects of, e.g. RIT are under controversial discussion (Lim, *et al* 2010).**

The graft-versus-leukemia effect observed after allogeneic hematopoietic stem cell transplantation is evidence for anti-leukemic activity of T cells against CLL (Giannopoulos and Schmitt 2006, Khouri, *et al* 1998). A potential CLL-associated T cell antigen is survivin, a member of the inhibitor of apoptosis (IAP) gene family (Schmidt, *et al* 2003). This *in vitro* study was conducted to determine whether stromal contact protects CLL cells against passive and active immunotherapy. We evaluated the *ex vivo* cytotoxic effect of RIT and ALT and the ability of survivin-specific and allogenic CTLs generated in mixed lymphocyte reactions to lyse primary CLL cells in presence and absence of the murine stromal cell line M2-10B4 with or without the CXCR4 antagonist TN14003.

Materials and methods

Patients and healthy donors

Peripheral blood samples were obtained from 32 patients at University Medical Center Freiburg (SI Table 1) satisfying criteria for B-CLL and 10 healthy volunteers (Cheson, *et al* 1996). Rai stage and treatment status were abstracted from clinical records. IgV_H mutation

Buchner et al.

Microenvironmental impact on immunotherapy in CLL

status, ZAP70 expression, and genomic aberrations were determined as described previously (Hamblin, *et al* 1999, Osterroth, *et al* 1999, Pfeifer, *et al* 2007, Rassenti, *et al* 2004). 19 Patients had not been treated, 13 patients had received low-dose chlorambucil and/or fludarabine, which had been discontinued at least 6 months prior to phlebotomy. Blood sampling had been approved by the local ethics committee and all patients gave informed consent.

Peripheral blood mononuclear cells (PBMCs) were isolated by Ficoll. Most CLL samples contained >85% CLL B cells as determined by flow cytometry with anti-CD19 (BioLegend, San Diego, CA), anti-CD5 (BD Pharmingen Heidelberg, Germany), and anti-CD23 (Beckman Coulter, Fullerton, CA) mAb. If purity was <85%, B cells were isolated by negative selection (B-cell isolation kit II; Miltenyi Biotech, Bergisch Gladbach, Germany). CD8⁺ T cells were isolated from healthy donors by negative selection (CD8 Isolation Kit II; Miltenyi Biotech) to a purity of more than 85%.

Reagents and Cell lines

The **highly selective tetradeca-peptide** CXCR4 receptor antagonist TN14003 was a kind gift from N. Fujii, Kyoto, Japan (**Tamamura, *et al* 2001**). The stromal cell line M2-10B4 (ATCC; Manassas, VA), maintained in RPMI 1640 containing 10% FCS was plated on 96 well plates at 2×10^5 cells/well, starved overnight, and incubated with CXCR4 30min prior to coculture with CLL cells where indicated. **To remove CLL cells from stromal cell coculture we performed gentle but persistent pipetting. Stromal cells were discriminated from CLL cells according to their distinct forward/sideward scatter properties in flow cytometry (Burger, *et al* 2005).**

Arabinosyl-2-fluoroadenine (F-ara-A) was purchased from Sigma-Aldrich (St. Louis, MO) **and used at 20µM final concentration.** ALT (Schering, Weimar, Germany) and RIT (Roche, Basel, Switzerland) were used at final concentrations of 20µg/ml and 10µg/ml, respectively. For complement-mediated lysis, 10% fresh human serum (HS) was added. **Z-VAD was purchased from Promega Inc and used at a final concentration of 20 µM.**

Buchner et al.

Microenvironmental impact on immunotherapy in CLL

Intracellular staining of Mcl-1

After 48 hour culture of CLL cells with or without stromal cell contact in the presence and absence of CXCR4 antagonists, cells were fixed and permeabilized according to manufacturer's protocol (Foxp3 staining kit, eBioscience, San Diego, CA), stained with a Mcl-1 antibody (Epitomics Inc., San Francisco, CA), and analyzed by flow cytometry.

Generation of effector CTLs

Effector CTLs generated in allogeneic mixed lymphocyte reactions (MLR) were stimulated similarly as described previously (Kato, *et al* 1998). CLL B cells were plated into 96-well plates at 1×10^5 cells/well (IMDM, 10% human serum). 1×10^5 healthy donor CD8⁺ T cells/well were added and T cells were re-stimulated weekly with 2×10^4 CLL cells/well. For CD40 activation, CLL cells were stimulated for 48 h with 100 ng/ml sCD154 (Biosource, Camarillo, CA) before stimulation of T cells. Recombinant human IL-2 (R&D Systems, Minneapolis, MN) was added at 25 U/ml three days after each stimulation. After 1 to 4 stimulations, cytotoxicity of effector CTLs was assessed by flow cytometry or chromium (⁵¹Cr) release assays. CLL cells were incubated with or without the CXCR4 blocking agent TN14003 for 30 min in a final concentration of 10 µg/ml prior to cultivation with the unlabelled stromal cell line M2-10B4 for 2 hours where indicated. Effector T cells were added to the respective culture for 4 hours. For generation of survivin-specific T cells, purified HLA-A2⁺ healthy CD8⁺ T cells were primarily stimulated with irradiated monocyte-derived, peptide-pulsed dendritic cells that were pulsed prior to stimulation with the native survivin-derived peptide (Sur9: ELTLGEFLKL) for 2 hours in the presence of β2-microglobulin (3 µg/ml, Sigma Aldrich). T cells were restimulated weekly using CD40-activated B cells pulsed with the corresponding peptide. After 3 stimulations, cytotoxicity of CTLs against primary CLL cells was assessed in chromium ⁵¹Cr release assay.

Buchner et al.

Microenvironmental impact on immunotherapy in CLL

Immunoblotting

Immunoblotting was performed as previously described (Buchner, *et al* 2009). Primary antibodies included pAkt^{S473}, Akt (Cell Signaling Technology), Mcl-1 (Epitomics, San Francisco, CA), or β -actin (Sigma-Aldrich), secondary antibodies were horseradish peroxidase-conjugated from Cell Signaling Technology. Densitometric analysis was performed using ImageJ software (<http://rsb.info.nih.gov/ij/>).

CLL cell treatment and viability assessment

B-CLL cells from frozen stocks thawed prior to experiments were incubated for 48 hours with F-ara-A or with RIT and ALT for 4 h (ADCC) and 12h (CDC), respectively. Cells were activated with IL-2 (500 U/ml) overnight and used at 30:1 (PBMC:CLL). To distinguish between PBMC and CLL cells, the latter were stained with CFSE. Cell viability was determined by propidium iodide (PI) (Sigma Aldrich) for ADCC. Otherwise, Annexin V-FITC (BD Bioscience) and PI was used. CLL cells were removed from stromal cell coculture by gentle but persistent pipetting.

Chromium (⁵¹Cr) release assay

Chromium release assay was performed as previously described (Zirlik, *et al* 2006). In brief, survivin-specific CTLs or effector T cells from allogeneic MLR were incubated with ⁵¹Cr-labeled target cells. CTL activity was titrated at different effector-to-target ratios (30:1, 10:1, 3:1) for 4 hours and ⁵¹Cr was measured in supernatants.

Cell polarization

For confocal analysis of cell polarization in target cells, CLL cells were stained with Mitotracker Red CM-H₂XROS (Invitrogen, Carlsbad, CA) and treated for 30min with 10 μ M colchicine or control. After 3 washing steps, cells were preincubated with alemtuzumab (20 μ g/ml) before magnetically isolated, IL-2 activated NK cells labeled with Celltracker Green

Buchner et al.

Microenvironmental impact on immunotherapy in CLL

were added with a ratio of 1:1 onto adhesion slides (Marienfeld GmbH, Lauda-Königshofen, Germany), cells were fixed with 2% formaldehyde, mounted using DAPI containing mounting medium (Vector Laboratories, Burlingame, CA) and analyzed using a Leica TCS SP2 AOBS spectral confocal microscope (Leica Microsystems, Wetzlar, Germany).

Statistical analysis

Statistical analysis was performed using student's t-test or Wilcoxon test using the Graphpad Prism Software.

Results

Stromal cells protect CLL cells from chemotherapy-induced apoptosis via CXCL12 - CXCR4 interaction, Akt activation, and upregulation of Mcl-1

To confirm the previously reported protective effect of the microenvironment on the viability of CLL cells *in vitro*, we assessed apoptosis of CLL cells in the presence and absence of the CXCL12-secreting stromal cell line M2-10B4 (Burger, *et al* 2005). After 48 hours under standard culture conditions, only 50±7% of CLL cells remained viable. Coculture of CLL cells with stromal cells significantly enhanced viability to 81±3% (n=16, p<0.01). The CXCR4 antagonist TN14003 reversed this protective effect (Supporting Information (SI) Fig. 1A), while it did not affect CLL cell survival in the absence of stroma (shown in Fig. 1A). Similar results were obtained for the CXCR4 antagonist AMD3100 (SI Fig 1B).

Fludarabine is the most effective single chemotherapeutic agent in CLL. *In vitro*, treatment of CLL cells with 20µM F-ara-A, the dephosphorylated, active fludarabine derivative, reduced absolute viability of CLL cells from 27±3% to 9±3% after 48hrs (SI Fig. 2). To compare pro-apoptotic F-ara-A effects under various culture conditions, we used the relative viability by defining the respective untreated control (without stroma, with stroma, with stroma and

Buchner et al.

Microenvironmental impact on immunotherapy in CLL

TN14003 - as indicated) as 100% (Burger, *et al* 1999) **accounting for variabilities in spontaneous apoptosis rates in different patients' samples (Kurtova, *et al* 2009).**

Coculture with stromal cells significantly enhanced the relative viability after F-ara-A treatment from 35±9% to 59±8% after 48hrs (Fig. 1A, n=8, p<0.05). The protective effect of stromal cells on chemotherapy-induced apoptosis was mainly prevented by the CXCR4 receptor antagonist TN14003 (Fig. 1A, p<0.05), **in line with previous findings (Burger, *et al* 2005). The viability of stromal cells and their capacity to secrete CXCL12 was not influenced by 48 h F-ara-A treatment (SI Fig. 3A and B).**

Mechanistically, Mcl-1 protein expression was significantly increased in primary CLL cells after coculture with M2-10B4 cells, an effect abrogated by the CXCR4 antagonist TN14003 (Fig. 1B). Addition of the caspase inhibitor Z-VAD did not affect Mcl-1 expression after treatment with the CXCR4 inhibitor. Therefore, the increased apoptosis induction and emerging caspase activation does not account for the Mcl-1 downregulation.

In line with previous reports, we found increased activation of Akt upon stromal cell coculture. Again, this effect could be blocked by CXCR4 inhibition (Fig. 1C). In contrast, the expression of the other proapoptotic mediators Bid and Bim was not regulated and Bad was not expressed at all (data not shown). These data suggest that stromal cell-induced apoptosis resistance is largely mediated by Mcl-1 upregulation (Balakrishnan, *et al* 2009).

CXCR4 antagonists increase the efficacy of CDC but not ADCC of alemtuzumab and rituximab by attenuating the protective effects of stromal cells

To investigate whether stromal cells protect CLL cells in the setting of passive immunotherapy, we examined the *in vitro* activity of ALT and RIT in the presence of human complement or activated natural killer (NK) cells from healthy PBMCs on CLL cells alone and in co-culture with stromal cells. Both antibodies significantly reduced viability of CLL cells by

Buchner et al.

Microenvironmental impact on immunotherapy in CLL

CDC and ADCC compared to IgG control as determined by %viability in flow cytometry (SI Fig. 4A, C and D). **Similar results for CDC were obtained when total viable cell count was determined (SI Fig. 4B).** In accordance with previously published data, ALT mediated CDC *in vitro* more efficiently than RIT (Voso, *et al* 2002). Coculture with stromal cells inhibited CDC of CLL cells for both antibodies. The CXCR4 antagonist TN14003 abrogated this protective effect (Fig. 2A and B). **Again, similar results were obtained when total viable cell count was determined (SI Fig. 5A and B). The viability and the capacity to secrete CXCL12 of stromal cells were not influenced by the treatment of ALT and RIT (SI Fig. 3C and D).**

We next evaluated the influence of the microenvironment on ALT- and RIT-mediated ADCC of primary CLL cell using activated NK cells from healthy PBMCs as effector cells. **PBMCs from healthy donors were used since NK from CLL patients are severely impaired (Gorgun, *et al* 2005, Katrinakis, *et al* 1996, Kay and Zarling 1987, Kay and Zarling 1984, Ramsay, *et al* 2008) and autologous NK cells from patients with CLL show inferior rituximab antibody-dependent cellular cytotoxicity than allogeneic NK cells (Weitzman, *et al* 2009).** In contrast to CDC, we detected no increase in CLL cell viability upon coculture with stromal cells (Fig. 2C and D). This effect was independent of various effector-to-target ratios (Fig. 2C and D; E:T ratio 30:1, and SI Fig. 6A and B; E:T ratio 10:1). Taken together, this suggests that the microenvironment exerts no protective effect against cellular effector mechanisms.

CTL-mediated killing of allogeneic CLL cells is not impaired by stromal cell contact

To examine CTL-mediated apoptosis, allogeneic CTL were incubated with target cells in the presence and absence of stromal cells and CXCR4 antagonists. To exclude differences in T cell quality as cause for variable effector function, CD8⁺ T cells from one donor were stimulated against a total of 19 different CLL samples in parallel. **T cells from a healthy donor were used as CLL-derived T-cell function is impaired (Gorgun, *et al* 2005,**

Buchner et al.

Microenvironmental impact on immunotherapy in CLL

Ramsay, et al 2008). Overall, CLL cells had inefficient allostimulatory capacity, since we observed measurable killing of CLL cells in only 13 of 19 cases (Fig. 3A). CTL-mediated apoptosis was CLL-cell specific and dose-dependent (Fig. 3B and C). At an effector-to-target ratio of 30:1, the measurable median target cell killing was 9% (range 4-36%, n=13). No differences in cytotoxicity were observed according to prognostic factors (data not shown). Coculture of CLL cells with the stromal cell line or with the stromal cell line and TN14003 did not modulate apoptosis induced by allogeneic CTLs (Fig. 4A+B). Allogeneic CTLs were cytotoxic only for the allogeneic CLL cells against which they were originally primed, as these cells did not manifest any cytotoxicity of autologous PBMCs (Fig. 4B). However, even under conditions of prestimulation with CD40L, stromal cells did not limit CTL-induced apoptosis of CLL cells (data not shown).

To analyse possible effects of stromal contact on T cell-mediated cytotoxicity independent of the variable and rather weak allostimulatory capacity of CLL cells, we validated our results with survivin-specific, HLA-A2-restricted healthy T cells. Survivin-specific T cells effectively lysed HLA-A2⁺ survivin⁺ CLL cells but not HLA-A2⁻ survivin⁻ CLL cells in a dose-dependent manner (Fig. 4C). In line with a previous report (Schmidt, *et al* 2003), survivin was expressed in malignant B cells from a HLA-A2 positive patient with CLL as determined by quantitative real-time PCR (data not shown). Stromal cell contact did not significantly reduce antigen-specific cytotoxicity, nor did the addition of the CXCR4 antagonist increase cytotoxicity, indicating that T cell-mediated cytotoxicity is indeed independent of stromal cell contact (Fig. 4C).

Target cell polarisation is required for efficient cytotoxicity in stroma context

To functionally explain the observed differences in stroma protection capacity in terms of cell-mediated or complement-mediated apoptosis, we added the toxin colchicine to the cytotoxicity assay. Colchicine destroys microtubule formation and therefore abrogates target cell polarisation and mitochondrial relocalization (Goping, *et al* 2008). Incubation with the

Buchner et al.

Microenvironmental impact on immunotherapy in CLL

1
2
3 toxin did not influence the survival of CLL or stromal cells in the observed time frame (Fig.
4
5 5A, SI Fig. 3E). NK cell activity was limited during toxin treatment (data not shown) but was
6
7 maintained when the target cells were preincubated and repeatedly washed prior to addition
8
9 of the activated PBMCs. In line with our previous finding (Fig. 2 C+D) we observed no
10
11 protective effect of stroma in ADCC-mediated cytotoxicity, suggesting that effector cells may
12
13 overcome stromal cell mediated protective effects. **However, inhibition of microtubule**
14
15 **formation by colchicine treatment resulted in a significant -albeit minor- protection of**
16
17 **CLL cells only in stroma context (Fig. 5 A, $p < 0.01$; SI Fig.7 for absolute viability).**
18
19 **Morphologically**, colchicine treatment prevented mitochondrial accumulation towards the
20
21 immunological synapse as assessed by confocal microscopy (Fig. 5B).
22
23
24
25
26
27
28

Discussion

29
30 Interactions between CLL cells and the microenvironment provide prolonged cell survival and
31
32 growth advantage and confer drug resistance to CLL cells (Caligaris-Cappio 2003, Chiorazzi,
33
34 *et al* 2005). *In vitro*, the inhibition of CXCL12-CXCR4 interactions restores susceptibility of
35
36 CLL cells in stromal contact to spontaneous and drug-induced apoptosis, suggesting
37
38 synergistic effects of combined therapy of CXCR4 antagonists and chemotherapy *in vivo*.
39
40 **Although recent studies suggest safety and efficacy of combining cytotoxic**
41
42 **chemotherapy with CXCR4 antagonists in acute myeloid leukemia (AML) (Uy GL 2008),**
43
44 **this combination may provoke toxicity towards mobilized healthy hematopoietic**
45
46 **progenitors that are normally protected in the marrow microenvironment.** Therefore,
47
48 we evaluated the effect of stromal coculture in the presence and absence of CXCR4
49
50 antagonists in more specific passive and active immunotherapeutic approaches targeting
51
52 CLL cells but not HSCs.
53
54
55
56
57
58

59 Indeed, stromal cell contact reduced complement-mediated cytotoxicity of alemtuzumab and
60
rituximab. The addition of the CXCR4 antagonist TN14003 reversed the protective effect of

Buchner et al.

Microenvironmental impact on immunotherapy in CLL

stromal cells resulting in decreased viability of CLL cells identifying CXCR4 antagonists as potential adjuvants for selective therapeutic intervention. Promising results in preclinical tumor models indicate that CXCR4 antagonists may have anti-tumor activity in patients with various malignancies without serious side effects (Khan, *et al* 2007, Stone, *et al* 2007, Voso, *et al* 2002, Wendt, *et al* 2008, Yoon, *et al* 2007).

Molecular mechanisms of the antiapoptotic function of stromal cell contact remain largely unknown. Although up-regulated in CLL, Bcl-2 does not seem to be critical for protection of CLL cells in stroma contact (Balakrishnan, *et al* 2009). We and others observed upregulation of the anti-apoptotic Bcl-2 family member Mcl-1 upon stromal cell contact (Balakrishnan, *et al* 2009). The potential role of Mcl-1 as an oncogene in lymphoid malignancies was confirmed in transgenic mouse models in which animals with deregulated expression of Mcl-1 eventually developed widely disseminated B-cell lymphoma (Zhou, *et al* 1998). **Interestingly, in CLL, stromal cell contact also upregulates Akt activation (Edelmann, et al 2008), an effect abrogated by CXCR4 antagonists (Fig. 1C).** Since active Akt also increases Mcl-1 half-life (Maurer, *et al* 2006), the Akt/Mcl-1 pathway might indeed mediate antiapoptotic signals during stromal cell support. **Accordingly, the inhibition of this pathway may explain the efficacy of CXCR4 antagonists in this setting.** In line with our observations, Mcl-1 has been reported to mediate apoptosis resistance to fludarabine and rituximab *in vivo* (Awan, *et al* 2009, Johnston, *et al* 2004, Pepper, *et al* 2008, Zhou, *et al* 1998), and downregulation of Mcl-1 by siRNA enhances RIT-mediated apoptosis *in vitro* (Hussain, *et al* 2007).

A strong correlation of high-affinity Fc γ R polymorphisms with clinical response to rituximab in follicular lymphoma (FL) (Cartron, *et al* 2002) provides evidence for an important role of ADCC in clinical lymphoma responses. **In CLL, however, this correlation does not exist which argues against a dominant role of ADCC in CLL. Although mainly natural killer (NK) cells are established ADCC effector cells, other cells such as monocytes and**

Buchner et al.

Microenvironmental impact on immunotherapy in CLL

macrophages may contribute to ADCC (Dalle, et al 2008, Lefebvre, et al 2006). These cell types were not analyzed in our study.

With respect to active immunotherapy, B-CLL cells *per se* are inefficient antigen-presenting cells (APCs), largely due to an inadequate co-stimulatory capacity (Dazzi, et al 1995, Wolos and Davey 1979) and the induction of an anergic phenotype in T cells by CLL cells. The latter phenomenon is not only induced in autologous but also in allogeneic T cells, resulting in down-modulation of genes important for proliferation and effector function (Gorgun, et al 2005). Recently, T cells of CLL patients and also healthy T cells after direct CLL cell contact were shown to have impaired ability to form immunological synapses and subsequent polarisation events (Ramsay, et al 2008). In agreement with these findings we observed efficient lysis of CLL cells in only 13 of 19 cases and overall poor cytotoxic T cell responses. Effective cellular immune therapy, such as vaccines (Hus, et al 2008) or genetically engineered T cell transfer (Hollyman, et al 2009) will have to overcome factors responsible for the disease-related immune deficiency of patients with CLL and the capacity of leukemia cells to effect cellular immune tolerance. Recent work has focused on strategies to overcome these limitations and encouraging biologic effects and clinical responses have been observed (Biagi, et al 2005, Hus, et al 2005, Kater, et al 2004a, Kater, et al 2004b, Mayr, et al 2005, Zirlik, et al 2006).

Unlike in the setting of chemotherapy- and CDC-induced apoptosis, CLL-stromal cell interactions did not impair T cell-mediated cytotoxicity **suggesting that** the microenvironment does not limit the efficacy of active immunotherapy in B-CLL. This conclusion could be drawn from the unspecific setting in MLRs as well as from the specific setting using survivin-specific T cells. **Of note, no change in stroma cell viability was observed after addition of any of the components, including activated NK and allospecific T cells (data not shown).** In view of our data showing no influence on the susceptibility of B-CLL cells to ADCC and allogeneic CTL attack by stroma, it might be

Buchner et al.

Microenvironmental impact on immunotherapy in CLL

1
2
3 **speculated that the mode of action to induce apoptosis is critical.** Allo-responsive CTLs
4
5 are able to lyse resting and CD40-stimulated B-CLL cells with equal efficiency, although
6
7 CD40 stimulation results in upregulation of anti-apoptotic molecules, including Mcl-1 (Chu, *et*
8
9 *al* 2000, Kater, *et al* 2004a, Kitada, *et al* 1999). In line with our findings, Mcl-1 downregulation
10
11 has been shown to sensitize CLL cells against CDC but not ADCC mediated cytotoxicity of
12
13 rituximab (Hussain, *et al* 2007). Directed exocytosis of lytic molecules such as granzymes
14
15 toward the target cell is one of the major mechanisms used by CTLs an NK cells. By
16
17 mitochondrial relocalization towards the site of granzyme B entry during CTL attack,
18
19 activated T cells are able to overcome upregulation of Bcl-2, usually blocking Granzyme B
20
21 (Goping, *et al* 2008). This suggests that cell polarization by immunological synapse formation
22
23 may overcome antiapoptotic events mediated by stroma. **For CLL, disruption of the**
24
25 **microtubulus network restored to some extent the stroma protective effect, although**
26
27 **the biological significance remains to be determined.** A direct effect of microtubule
28
29 disruption is unlikely as it would also affect ADCC efficacy without stroma. **A potential**
30
31 **explanation for this effect may be the missing mitochondria relocation towards the**
32
33 **immunological synapse observed after colchicine treatment.**
34
35
36
37
38
39

40 However, the fact that cell-mediated immunotherapy, such as active vaccinations strategies,
41
42 T cell transfer or "graft vs. leukemia"-effect after allogeneic hematopoietic stem cell
43
44 transplantation, is not limited **by contact to stromal cells** supports the application of this
45
46 therapeutic strategy. **Therefore, we propose this approach to be further investigated *in***
47
48 ***vivo*.**
49
50
51
52

53 In conclusion, this study demonstrates that adhesion-mediated drug resistance protects CLL
54
55 cells against monoclonal antibody treatment, an effect abrogated by CXCR4 antagonists.
56
57 Therefore, combined therapy with CXCR4 antagonists may represent a promising strategy to
58
59 enhance the efficacy of ALT and RIT therapy in CLL. In addition, we show that CLL-stromal
60
cell interactions do not impair T cell-mediated cytotoxicity on CLL cells.

1
2
3
4
5
6
7
8
9
10
11
12
13
14
15
16
17
18
19
20
21
22
23
24
25
26
27
28
29
30
31
32
33
34
35
36
37
38
39
40
41
42
43
44
45
46
47
48
49
50
51
52
53
54
55
56
57
58
59
60

Buchner et al.

Microenvironmental impact on immunotherapy in CLL

Acknowledgements

We thank Max Warncke, Paul Fisch and Markus Simon for helpful discussions. This work was supported by the Deutsche Krebshilfe grant 107275 (to M. Burger, H. Veelken, and K. Ziriklik).

For Peer Review

Buchner et al.

Microenvironmental impact on immunotherapy in CLL

References

- Awan, F.T., Kay, N.E., Davis, M.E., Wu, W., Geyer, S.M., Leung, N., Jelinek, D.F., Tschumper, R.C., Secreto, C.R., Lin, T.S., Grever, M.R., Shanafelt, T.D., Zent, C.S., Call, T.G., Heerema, N.A., Lozanski, G., Byrd, J.C. & Lucas, D.M. (2009) Mcl-1 expression predicts progression-free survival in chronic lymphocytic leukemia patients treated with pentostatin, cyclophosphamide, and rituximab. *Blood*, **113**, 535-537.
- Balakrishnan, K., Burger, J.A., Wierda, W.G. & Gandhi, V. (2009) AT-101 induces apoptosis in CLL B cells and overcomes stromal cell-mediated Mcl-1 induction and drug resistance. *Blood*, **113**, 149-153.
- Biagi, E., Rousseau, R., Yvon, E., Schwartz, M., Dotti, G., Foster, A., Havlik-Cooper, D., Grilley, B., Gee, A., Baker, K., Carrum, G., Rice, L., Andreeff, M., Popat, U. & Brenner, M. (2005) Responses to human CD40 ligand/human interleukin-2 autologous cell vaccine in patients with B-cell chronic lymphocytic leukemia. *Clin Cancer Res*, **11**, 6916-6923.
- Buchner, M., Fuchs, S., Prinz, G., Pfeifer, D., Bartholome, K., Burger, M., Chevalier, N., Vallat, L., Timmer, J., Gribben, J.G., Jumaa, H., Veelken, H., Dierks, C. & Zirlik, K. (2009) Spleen tyrosine kinase is overexpressed and represents a potential therapeutic target in chronic lymphocytic leukemia. *Cancer Res*, **69**, 5424-5432.
- Burger, J.A., Burger, M. & Kipps, T.J. (1999) Chronic lymphocytic leukemia B cells express functional CXCR4 chemokine receptors that mediate spontaneous migration beneath bone marrow stromal cells. *Blood*, **94**, 3658-3667.
- Burger, J.A. & Kipps, T.J. (2006) CXCR4: a key receptor in the crosstalk between tumor cells and their microenvironment. *Blood*, **107**, 1761-1767.
- Burger, M., Hartmann, T., Krome, M., Rawluk, J., Tamamura, H., Fujii, N., Kipps, T.J. & Burger, J.A. (2005) Small peptide inhibitors of the CXCR4 chemokine receptor (CD184) antagonize the activation, migration, and antiapoptotic responses of CXCL12 in chronic lymphocytic leukemia B cells. *Blood*, **106**, 1824-1830.
- Caligaris-Cappio, F. (2003) Role of the microenvironment in chronic lymphocytic leukaemia. *Br J Haematol*, **123**, 380-388.
- Cartron, G., Dacheux, L., Salles, G., Solal-Celigny, P., Bardos, P., Colombat, P. & Watier, H. (2002) Therapeutic activity of humanized anti-CD20 monoclonal antibody and polymorphism in IgG Fc receptor FcγRIIIa gene. *Blood*, **99**, 754-758.
- Cheson, B.D., Bennett, J.M., Grever, M., Kay, N., Keating, M.J., O'Brien, S. & Rai, K.R. (1996) National Cancer Institute-sponsored Working Group guidelines for chronic lymphocytic leukemia: revised guidelines for diagnosis and treatment. *Blood*, **87**, 4990-4997.
- Chiorazzi, N., Rai, K.R. & Ferrarini, M. (2005) Chronic lymphocytic leukemia. *N Engl J Med*, **352**, 804-815.
- Chu, P., Wierda, W.G. & Kipps, T.J. (2000) CD40 activation does not protect chronic lymphocytic leukemia B cells from apoptosis induced by cytotoxic T lymphocytes. *Blood*, **95**, 3853-3858.
- Dalle, S., Thieblemont, C., Thomas, L. & Dumontet, C. (2008) Monoclonal antibodies in clinical oncology. *Anticancer Agents Med Chem*, **8**, 523-532.
- Damiano, J.S., Cress, A.E., Hazlehurst, L.A., Shtil, A.A. & Dalton, W.S. (1999) Cell adhesion mediated drug resistance (CAM-DR): role of integrins and resistance to apoptosis in human myeloma cell lines. *Blood*, **93**, 1658-1667.
- Dazzi, F., D'Andrea, E., Biasi, G., De Silvestro, G., Gaidano, G., Schena, M., Tison, T., Vianello, F., Girolami, A. & Caligaris-Cappio, F. (1995) Failure of B cells of chronic lymphocytic leukemia in presenting soluble and alloantigens. *Clin Immunol Immunopathol*, **75**, 26-32.
- Edelmann, J., Klein-Hitpass, L., Carpinteiro, A., Fuhrer, A., Sellmann, L., Stilgenbauer, S., Duhrsen, U. & Durig, J. (2008) Bone marrow fibroblasts induce expression of PI3K/NF-κB pathway genes and a pro-angiogenic phenotype in CLL cells. *Leuk Res*, **32**, 1565-1572.

Buchner et al.

Microenvironmental impact on immunotherapy in CLL

- 1
2
3 Faderl, S., Coutre, S., Byrd, J.C., Dearden, C., Denes, A., Dyer, M.J., Gregory, S.A.,
4 Gribben, J.G., Hillmen, P., Keating, M., Rosen, S., Venugopal, P. & Rai, K. (2005)
5 The evolving role of alemtuzumab in management of patients with CLL. *Leukemia*,
6 **19**, 2147-2152.
7
8 Giannopoulos, K. & Schmitt, M. (2006) Targets and strategies for T-cell based vaccines in
9 patients with B-cell chronic lymphocytic leukemia. *Leuk Lymphoma*, **47**, 2028-2036.
10 Goping, I.S., Sawchuk, T., Rieger, A., Shostak, I. & Bleackley, R.C. (2008) Cytotoxic T
11 lymphocytes overcome Bcl-2 inhibition: target cells contribute to their own demise.
12 *Blood*, **111**, 2142-2151.
13 Gorgun, G., Holderried, T.A., Zahrieh, D., Neuberg, D. & Gribben, J.G. (2005) Chronic
14 lymphocytic leukemia cells induce changes in gene expression of CD4 and CD8 T
15 cells. *J Clin Invest*, **115**, 1797-1805.
16 Hamblin, T.J., Davis, Z., Gardiner, A., Oscier, D.G. & Stevenson, F.K. (1999) Unmutated Ig
17 V(H) genes are associated with a more aggressive form of chronic lymphocytic
18 leukemia. *Blood*, **94**, 1848-1854.
19 Hollyman, D., Stefanski, J., Przybylowski, M., Bartido, S., Borquez-Ojeda, O., Taylor, C.,
20 Yeh, R., Capacio, V., Olszewska, M., Hosey, J., Sadelain, M., Brentjens, R.J. &
21 Riviere, I. (2009) Manufacturing validation of biologically functional T cells targeted to
22 CD19 antigen for autologous adoptive cell therapy. *J Immunother*, **32**, 169-180.
23
24 Hus, I., Rolinski, J., Tabarkiewicz, J., Wojas, K., Bojarska-Junak, A., Greiner, J.,
25 Giannopoulos, K., Dmoszynska, A. & Schmitt, M. (2005) Allogeneic dendritic cells
26 pulsed with tumor lysates or apoptotic bodies as immunotherapy for patients with
27 early-stage B-cell chronic lymphocytic leukemia. *Leukemia*, **19**, 1621-1627.
28 Hus, I., Schmitt, M., Tabarkiewicz, J., Radej, S., Wojas, K., Bojarska-Junak, A., Schmitt, A.,
29 Giannopoulos, K., Dmoszynska, A. & Rolinski, J. (2008) Vaccination of B-CLL
30 patients with autologous dendritic cells can change the frequency of leukemia
31 antigen-specific CD8+ T cells as well as CD4+CD25+FoxP3+ regulatory T cells
32 toward an antileukemia response. *Leukemia*, **22**, 1007-1017.
33
34 Hussain, S.R., Cheney, C.M., Johnson, A.J., Lin, T.S., Grever, M.R., Caligiuri, M.A., Lucas,
35 D.M. & Byrd, J.C. (2007) Mcl-1 is a relevant therapeutic target in acute and chronic
36 lymphoid malignancies: down-regulation enhances rituximab-mediated apoptosis and
37 complement-dependent cytotoxicity. *Clin Cancer Res*, **13**, 2144-2150.
38 Johnston, J.B., Paul, J.T., Neufeld, N.J., Haney, N., Kropp, D.M., Hu, X., Cheang, M. &
39 Gibson, S.B. (2004) Role of myeloid cell factor-1 (Mcl-1) in chronic lymphocytic
40 leukemia. *Leuk Lymphoma*, **45**, 2017-2027.
41 Kater, A.P., Evers, L.M., Remmerswaal, E.B., Jaspers, A., Oosterwijk, M.F., van Lier, R.A.,
42 van Oers, M.H. & Eldering, E. (2004a) CD40 stimulation of B-cell chronic lymphocytic
43 leukaemia cells enhances the anti-apoptotic profile, but also Bid expression and cells
44 remain susceptible to autologous cytotoxic T-lymphocyte attack. *Br J Haematol*, **127**,
45 404-415.
46
47 Kater, A.P., Remmerswaal, E.B., Nolte, M.A., Eldering, E., van Oers, M.H. & van Lier, R.A.
48 (2004b) Autologous cytomegalovirus-specific T cells as effector cells in
49 immunotherapy of B cell chronic lymphocytic leukaemia. *Br J Haematol*, **126**, 512-
50 516.
51 Kater, A.P., van Oers, M.H. & Kipps, T.J. (2007) Cellular immune therapy for chronic
52 lymphocytic leukemia. *Blood*, **110**, 2811-2818.
53 Kato, K., Cantwell, M.J., Sharma, S. & Kipps, T.J. (1998) Gene transfer of CD40-ligand
54 induces autologous immune recognition of chronic lymphocytic leukemia B cells. *J*
55 *Clin Invest*, **101**, 1133-1141.
56 Katrinakis, G., Kyriakou, D., Papadaki, H., Kalokyri, I., Markidou, F. & Eliopoulos, G.D.
57 (1996) Defective natural killer cell activity in B-cell chronic lymphocytic leukaemia is
58 associated with impaired release of natural killer cytotoxic factor(s) but not of tumour
59 necrosis factor-alpha. *Acta Haematol*, **96**, 16-23.
60
61 Kay, N.E. & Zarlring, J. (1987) Restoration of impaired natural killer cell activity of B-chronic
62 lymphocytic leukemia patients by recombinant interleukin-2. *Am J Hematol*, **24**, 161-
63 167.

Buchner et al.

Microenvironmental impact on immunotherapy in CLL

- 1
2
3 Kay, N.E. & Zarlign, J.M. (1984) Impaired natural killer activity in patients with chronic
4 lymphocytic leukemia is associated with a deficiency of azurophilic cytoplasmic
5 granules in putative NK cells. *Blood*, **63**, 305-309.
- 6
7 Khan, A., Greenman, J. & Archibald, S.J. (2007) Small molecule CXCR4 chemokine receptor
8 antagonists: developing drug candidates. *Curr Med Chem*, **14**, 2257-2277.
- 9
10 Khouri, I.F., Keating, M., Korbling, M., Przepiora, D., Anderlini, P., O'Brien, S., Giralt, S.,
11 Ippoliti, C., von Wolff, B., Gajewski, J., Donato, M., Claxton, D., Ueno, N., Andersson,
12 B., Gee, A. & Champlin, R. (1998) Transplant-lite: induction of graft-versus-
13 malignancy using fludarabine-based nonablative chemotherapy and allogeneic blood
14 progenitor-cell transplantation as treatment for lymphoid malignancies. *J Clin Oncol*,
15 **16**, 2817-2824.
- 16
17 Kitada, S., Zapata, J.M., Andreeff, M. & Reed, J.C. (1999) Bryostatins and CD40-ligand
18 enhance apoptosis resistance and induce expression of cell survival genes in B-cell
19 chronic lymphocytic leukaemia. *Br J Haematol*, **106**, 995-1004.
- 20
21 Kurtova, A.V., Balakrishnan, K., Chen, R., Ding, W., Schnabl, S., Quiroga, M.P., Sivina, M.,
22 Wierda, W.G., Estrov, Z., Keating, M.J., Shehata, M., Jager, U., Gandhi, V., Kay,
23 N.E., Plunkett, W. & Burger, J.A. (2009) Diverse marrow stromal cells protect CLL
24 cells from spontaneous and drug-induced apoptosis: development of a reliable and
25 reproducible system to assess stromal cell adhesion-mediated drug resistance.
26 *Blood*, **114**, 4441-4450.
- 27
28 Lefebvre, M.L., Krause, S.W., Salcedo, M. & Nardin, A. (2006) Ex vivo-activated human
29 macrophages kill chronic lymphocytic leukemia cells in the presence of rituximab:
30 mechanism of antibody-dependent cellular cytotoxicity and impact of human serum. *J*
31 *Immunother*, **29**, 388-397.
- 32
33 Lim, C.K., Sun, L., Feng, Q., Law, P., Chua, W.T., Lim, S.N. & Hwang, W.Y. (2008) Effect of
34 anti-CD52 antibody alemtuzumab on ex-vivo culture of umbilical cord blood stem
35 cells. *J Hematol Oncol*, **1**, 19.
- 36
37 Lim, S.H., Beers, S.A., French, R.R., Johnson, P.W., Glennie, M.J. & Cragg, M.S. (2010)
38 Anti-CD20 monoclonal antibodies: historical and future perspectives. *Haematologica*,
39 **95**, 135-143.
- 40
41 Maurer, U., Charvet, C., Wagman, A.S., Dejardin, E. & Green, D.R. (2006) Glycogen
42 synthase kinase-3 regulates mitochondrial outer membrane permeabilization and
43 apoptosis by destabilization of MCL-1. *Mol Cell*, **21**, 749-760.
- 44
45 Mayr, C., Kofler, D.M., Buning, H., Bund, D., Hallek, M. & Wendtner, C.M. (2005)
46 Transduction of CLL cells by CD40 ligand enhances an antigen-specific immune
47 recognition by autologous T cells. *Blood*, **106**, 3223-3226.
- 48
49 Nimmerjahn, F. & Ravetch, J.V. (2006) Fcγ receptors: old friends and new family
50 members. *Immunity*, **24**, 19-28.
- 51
52 Osterroth, F., Alkan, O., Mackensen, A., Lindemann, A., Fisch, P., Skerra, A. & Veelken, H.
53 (1999) Rapid expression cloning of human immunoglobulin Fab fragments for the
54 analysis of antigen specificity of B cell lymphomas and anti-idiotypic lymphoma
55 vaccination. *J Immunol Methods*, **229**, 141-153.
- 56
57 Pepper, C., Lin, T.T., Pratt, G., Hewamana, S., Brennan, P., Hiller, L., Hills, R., Ward, R.,
58 Starczynski, J., Austen, B., Hooper, L., Stankovic, T. & Fegan, C. (2008) Mcl-1
59 expression has in vitro and in vivo significance in chronic lymphocytic leukemia and is
60 associated with other poor prognostic markers. *Blood*, **112**, 3807-3817.
- Pfeifer, D., Pantic, M., Skatulla, I., Rawluk, J., Kreutz, C., Martens, U.M., Fisch, P., Timmer,
J. & Veelken, H. (2007) Genome-wide analysis of DNA copy number changes and
LOH in CLL using high-density SNP arrays. *Blood*, **109**, 1202-1210.
- Ramsay, A.G., Johnson, A.J., Lee, A.M., Gorgun, G., Le Dieu, R., Blum, W., Byrd, J.C. &
Gribben, J.G. (2008) Chronic lymphocytic leukemia T cells show impaired
immunological synapse formation that can be reversed with an immunomodulating
drug. *J Clin Invest*, **118**, 2427-2437.
- Rassenti, L.Z., Huynh, L., Toy, T.L., Chen, L., Keating, M.J., Gribben, J.G., Neuberg, D.S.,
Flinn, I.W., Rai, K.R., Byrd, J.C., Kay, N.E., Greaves, A., Weiss, A. & Kipps, T.J.
(2004) ZAP-70 compared with immunoglobulin heavy-chain gene mutation status as

Buchner et al.

Microenvironmental impact on immunotherapy in CLL

- a predictor of disease progression in chronic lymphocytic leukemia. *N Engl J Med*, **351**, 893-901.
- Schmidt, S.M., Schag, K., Muller, M.R., Weck, M.M., Appel, S., Kanz, L., Grunebach, F. & Brossart, P. (2003) Survivin is a shared tumor-associated antigen expressed in a broad variety of malignancies and recognized by specific cytotoxic T cells. *Blood*, **102**, 571-576.
- Stanglmaier, M., Reis, S. & Hallek, M. (2004) Rituximab and alemtuzumab induce a nonclassic, caspase-independent apoptotic pathway in B-lymphoid cell lines and in chronic lymphocytic leukemia cells. *Ann Hematol*, **83**, 634-645.
- Stone, N.D., Dunaway, S.B., Flexner, C., Tierney, C., Calandra, G.B., Becker, S., Cao, Y.J., Wiggins, I.P., Conley, J., MacFarland, R.T., Park, J.G., Lalama, C., Snyder, S., Kallungal, B., Klingman, K.L. & Hendrix, C.W. (2007) Multiple-dose escalation study of the safety, pharmacokinetics, and biologic activity of oral AMD070, a selective CXCR4 receptor inhibitor, in human subjects. *Antimicrob Agents Chemother*, **51**, 2351-2358.
- Tamamura, H., Omagari, A., Hiramatsu, K., Gotoh, K., Kanamoto, T., Xu, Y., Kodama, E., Matsuoka, M., Hattori, T., Yamamoto, N., Nakashima, H., Otaka, A. & Fujii, N. (2001) Development of specific CXCR4 inhibitors possessing high selectivity indexes as well as complete stability in serum based on an anti-HIV peptide T140. *Bioorg Med Chem Lett*, **11**, 1897-1902.
- Uy GL, R.M., McFarland KM, et al. (2008) Mobilization and chemosensitization of AML with the CXCR4 antagonist Plerixafor (AMD3100): a phase I/II study of AMD3100+MEC in patients with relapsed or refractory disease. *Blood*, **112**, 678a.
- Voso, M.T., Pantel, G., Rutella, S., Weis, M., D'Alo, F., Urbano, R., Leone, G., Haas, R. & Hohaus, S. (2002) Rituximab reduces the number of peripheral blood B-cells in vitro mainly by effector cell-mediated mechanisms. *Haematologica*, **87**, 918-925.
- Weitzman, J., Betancur, M., Boissel, L., Rabinowitz, A.P., Klein, A. & Klingemann, H. (2009) Variable contribution of monoclonal antibodies to ADCC in patients with chronic lymphocytic leukemia. *Leuk Lymphoma*, **50**, 1361-1368.
- Wendt, M.K., Cooper, A.N. & Dwinell, M.B. (2008) Epigenetic silencing of CXCL12 increases the metastatic potential of mammary carcinoma cells. *Oncogene*, **27**, 1461-1471.
- Wolos, J.A. & Davey, F.R. (1979) Depressed stimulation in the MLR by B lymphocytes on chronic lymphocytic leukemia: failure to demonstrate a suppressor cell. *Clin Immunol Immunopathol*, **14**, 77-85.
- Yoon, Y., Liang, Z., Zhang, X., Choe, M., Zhu, A., Cho, H.T., Shin, D.M., Goodman, M.M., Chen, Z.G. & Shim, H. (2007) CXC chemokine receptor-4 antagonist blocks both growth of primary tumor and metastasis of head and neck cancer in xenograft mouse models. *Cancer Res*, **67**, 7518-7524.
- Zhou, P., Qian, L., Bieszczad, C.K., Noelle, R., Binder, M., Levy, N.B. & Craig, R.W. (1998) Mcl-1 in transgenic mice promotes survival in a spectrum of hematopoietic cell types and immortalization in the myeloid lineage. *Blood*, **92**, 3226-3239.
- Zipfel, P.F. & Skerka, C. (2009) Complement regulators and inhibitory proteins. *Nat Rev Immunol*, **9**, 729-740.
- Zirlik, K.M., Zahrieh, D., Neuberg, D. & Gribben, J.G. (2006) Cytotoxic T cells generated against heteroclitic peptides kill primary tumor cells independent of the binding affinity of the native tumor antigen peptide. *Blood*, **108**, 3865-3870.

Buchner et al.

Microenvironmental impact on immunotherapy in CLL

Figure legends

Figure 1: Stromal cells protect CLL cells from chemotherapy-induced apoptosis via CXCR4 - CXCL12 interactions and pAkt-dependent Mcl-1 upregulation. (A) Viability of CLL cells cultured with or without stromal cells and treated with 20 μ M F-ara-A or the combination of F-ara-A and 10 μ g/ml TN14003 was determined by annexin V/PI staining. Relative CLL cell viability was determined by defining the respective control as 100% (as indicated with the control bar) after 48hrs treatment. Data represent means \pm SEM (n=8). (B) Means (\pm SEM) of mean fluorescent intensity (MFI by flow cytometry) of Mcl-1 expression in CLL cells cultured with or without stroma in the presence or absence of the CXCR4 antagonist TN14003 are displayed on the left (n=12). A representative experiment shows MFI of Mcl-1 expression in primary CLL cells cultured with or without stromal cells on the right. Below, a representative Mcl-1 immunoblot of CLL cells is shown in the presence and absence of stroma, with and without addition of TN14003 and/or the caspase inhibitor Z-VAD (20 μ M). (C) Immunoblot shows pAkt and Akt of a representative CLL sample after 15min with or without coculture of stroma in the presence and absence of the CXCR4 antagonist TN14003.

Figure 2: CXCR4 antagonists increase the efficacy of ALT and RIT complement induced cytotoxicity by attenuating the protective effects of stromal cells. (A+B) CLL cells (n=7) cultured with or without stromal cells in the presence or absence of the CXCR4 antagonist TN14003 treated with 20 μ g/ml ALT (A) or 10 μ g/ml RIT (B) for 12hrs. Relative viabilities were determined by staining with Annexin V and PI and presented as means \pm SEM. (C+D) Relative viability of CLL cells (n=12) cultured with or without stromal cells in the presence or absence of the CXCR4 antagonist TN14003 treated with 20 μ g/ml ALT (C) or 10 μ g/ml RIT (D) for 4hrs in the presence of IL-2-activated PBMC at a ratio 30:1. IgG control of the respective culture setting (w/o stroma, w/stroma, or stroma+TN14003) was defined as 100% relative viability. Using annexin V and PI staining, CLL relative cell viability was determined and presented as means \pm SEM.

Buchner et al.

Microenvironmental impact on immunotherapy in CLL

Figure 3: CTL-mediated killing of allogeneic CLL cells. (A) Killing of CLL cells of 19 CLL patients induced by effector T cells generated in allogeneic MLR with spontaneous levels of apoptosis of B-CLL cells subtracted as determined by flow cytometry (CFSE/PI staining) at an effector-to-target ratio of 30:1 (M=mutated IgV_H; UM=unmutated IgV_H). (B) Flow cytometry analysis of cytolytic activity of effector T-cells from allogeneic MLR against CLL cells by staining with CFSE/PI presented as effector-to-target ratios 3:1 and 30:1. (C) Dose-dependent killing of CLL cells induced by effector T cells with spontaneous levels of apoptosis of B-CLL cells subtracted as determined by flow cytometry (CFSE/PI staining) represent means±SEM of triplicates.

Figure 4: CLL - stromal cell interactions do not impair T cell mediated cytotoxicity. (A) Viability of CLL cells (n=11) in the presence or absence of stromal coculture after incubation with T cells generated in allogeneic mixed lymphocyte reaction as assessed by flow cytometry (CFSE⁺/PI⁻). Untreated control without addition of T cells of the respective culture setting was defined as 100% viability. Data represent means±SEM. (B) Cytolytic activity of effector CTLs generated in allogeneic MLR as assessed by flow cytometry against CLL cells in presence of the stromal cell line M210B4 with or without the CXCR4 inhibitor TN14003 and against autologous PMBCs at three different effector-to-target ratios. Displayed are means±SEM of PI⁺-values of samples from 3 representative patients. (C) Killing by allogeneic CTLs generated against a native (Sur9: ELTLGEFLKL) survivin-derived peptide of HLA-A2-positive CLL cells cultured with or without stromal cells in the presence or absence of the CXCR4 antagonist TN14003 and HLA-A2-negative CLL cells at 3 different effector-target ratios.

Figure 5: Prevention of mitochondrial relocation in target cells restores protective stromal effect. (A) CFSE⁺-CLL cells were pretreated with 10µM colchicine after incubation with and without stroma before addition of ALT or IgG control and IL-2-activated PMBCs.

Buchner et al.

Microenvironmental impact on immunotherapy in CLL

After 2hrs, viability was measured by %CFSE⁺/PI⁻ and the relative viability calculated by defining the respective control culture as 100 % relative viability. Data are presented as means±SEM (n=7). (B) Confocal images of colchicine- or control-pretreated CLL cells stained for mitochondria (red) in direct contact to IL-2-activated NK cells (green) during alemtuzumab treatment.

Supporting information Figure Legends:

SI Fig. 1: (A) Viability of CLL cells cultured with or without stromal cells in the presence or absence of the CXCR4 antagonist TN14003 determined by annexin V/PI staining. Displayed are the mean percentage viability values (± SEM) of leukemic cells assessed by staining with Annexin V and PI (n=16). (B) Direct comparison of the CXCR4 antagonist TN14003 and AMD1300 (10 μM, Sigma Aldrich) revealed equal effects. Both antagonists significantly reduced stromal cell induced survival (p<0.05, n=5, respectively).

SI Fig. 2: Absolute viability of CLL cells defined as Annexin⁻/PI⁻, cultivated with or without stromal cells and treated with 20 μM F-ara-A or the combination of F-ara-A and/or 10 μg/ml TN14003. Data are presented as mean ± SEM values (n=8).

SI Fig. 3: Standard MTT assay and CXCL12 ELISA (BD Bioscience) were performed after incubation of stromal cells with 20 μM F-ara-A (A+B), IgG, rituximab, or alemtuzumab (C+D) for the same time frames as during CLL treatment. (E) Incubation with 10 μM colchicine for 30 min did not alter stromal cell viability as determined by MTT assay.

SI Fig. 4: (A) Relative viability of CLL cells cultured with ALT (20 μg/ml) or RIT (10 μg/ml) for 12 hours in the presence of 10% fresh human serum (n=7) for complement mediated cytotoxicity determined by Annexin V/PI staining. (B) Viable cell count of CLL cells treated with IgG (20 μg/ml), ALT (20 μg/ml) or RIT (10 μg/ml) for 12 hours in the presence of 10%

Buchner et al.

Microenvironmental impact on immunotherapy in CLL

fresh human serum (n=7) for complement mediated cytotoxicity determined by Guava viacount. (C+D) Relative viability of CLL cells cultured with ALT (20 µg/ml) or RIT (10 µg/ml) for 4 h with IL-2 activated PBMC (n=8) for ADCC at a effector-to-target ratio of 30:1 (C) and 10:1 (D), IgG control was defined as 100% viability. Data are presented as mean ± SEM values.

SI Fig. 5: Viable cell count of CLL cells treated with rituximab (A) or alemtuzumab (B) in the presence of fresh human stroma, measured using the Guava viacount technology for the indicated culture conditions (n=7). Data are presented as mean ± SEM values.

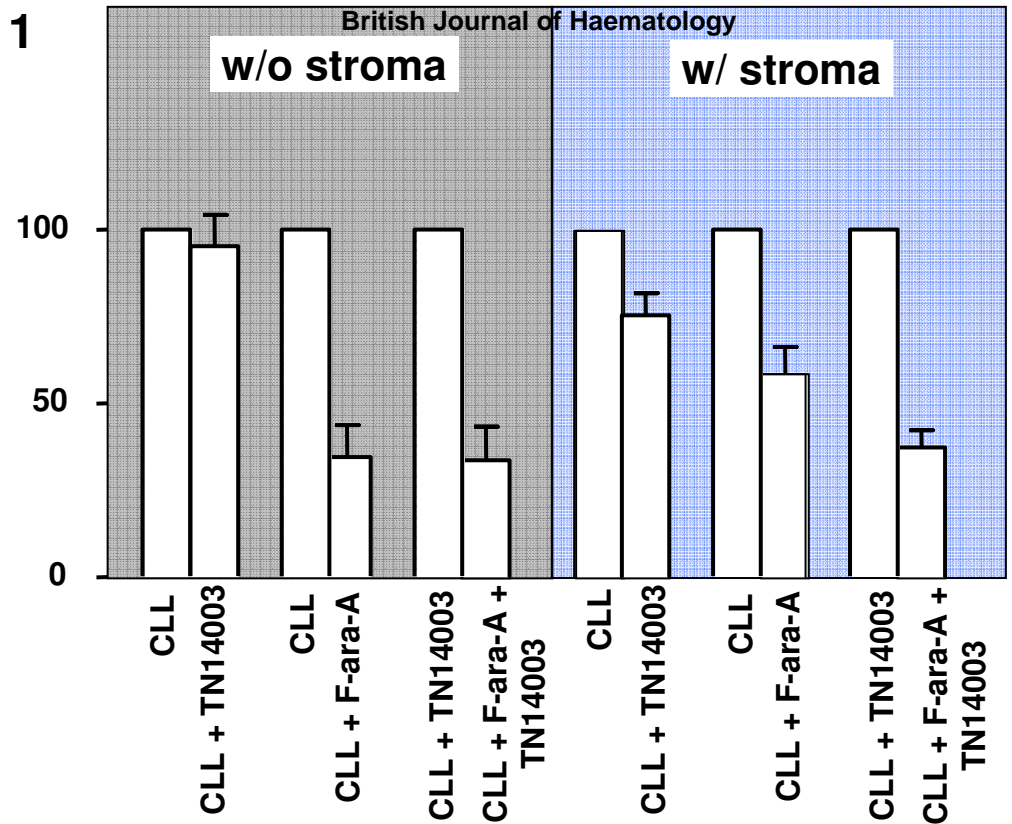
SI Fig. 6: (A+B) Relative viability of CLL cells (n=8) cultured with or without stromal cells in the presence or absence of the CXCR4 antagonist TN14003 treated with 20 µg/ml ALT (A) or 10 µg/ml RIT (B) for 4 hours in the presence of IL-2 activated PBMC at a ratio 10:1. IgG control of the respective culture setting (w/o stroma, w/ stroma, or stroma+TN14003) was defined as 100% relative viability. Data are presented as mean ± SEM values.

SI Fig. 7: CFSE⁺ CLL cells were pretreated with 10 µM colchicine after incubation with and without stroma before IL-2 activated PBMCs were added. After 2 hours, viability was measured by %CFSE⁺/PI. Data are presented as mean ± SEM values.

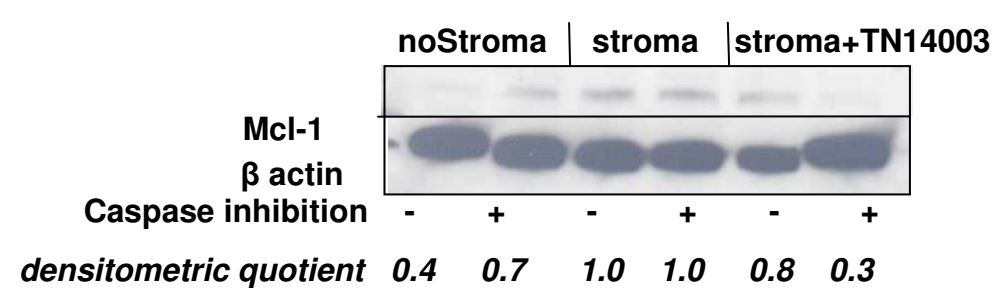
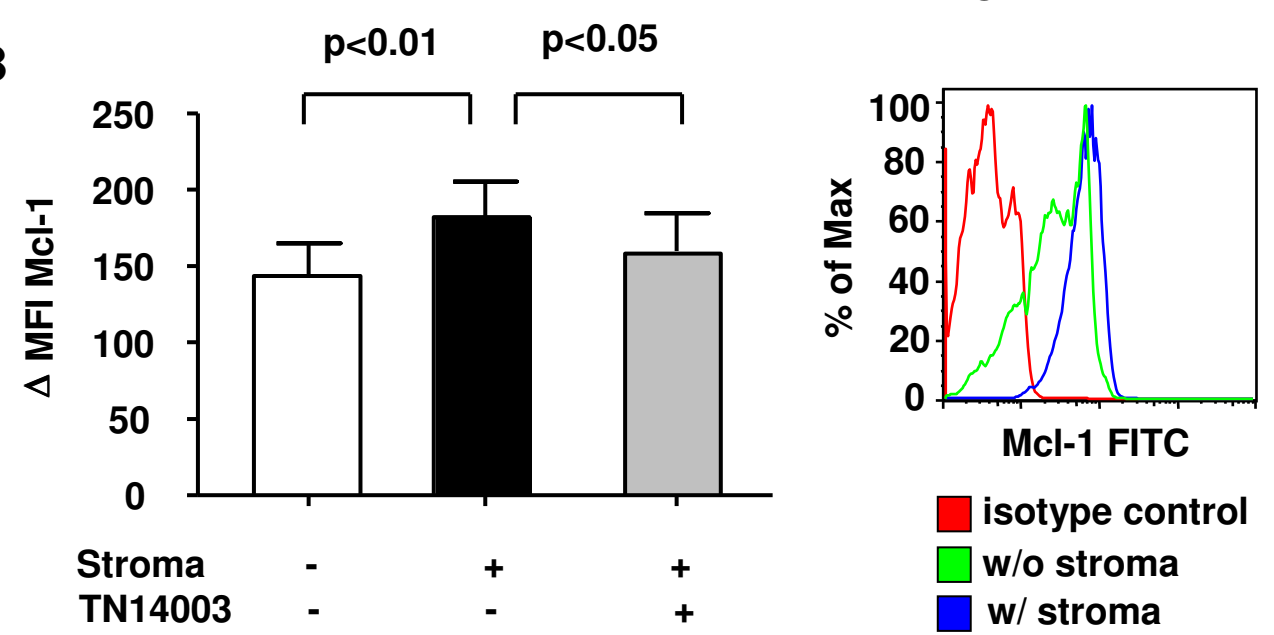
Supporting information Table 1: Clinical characteristics of CLL patients.

1
2
3
4
5
6
7
8
9
10
11
12
13
14
15
16
17
18
19
20
21
22
23
24
25
26
27
28
29
30
31
32
33
34
35
36
37
38
39
40
41
42
43
44
45
46
47
48
49
50
51
52
53
54
55
56
57
58
59
60

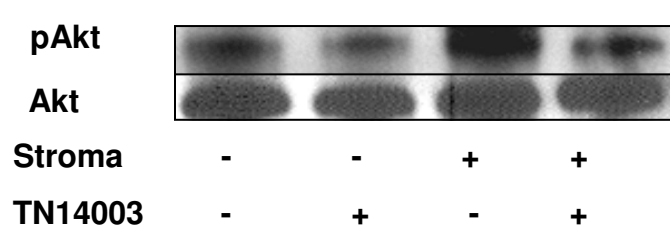
A
% viability
(control=100%)

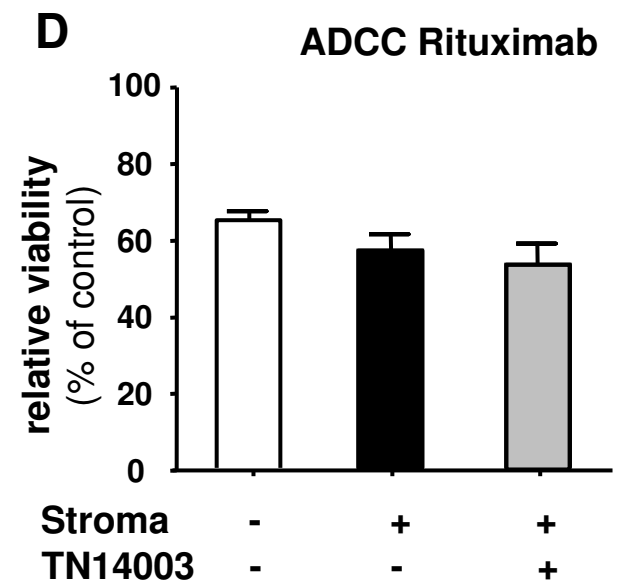
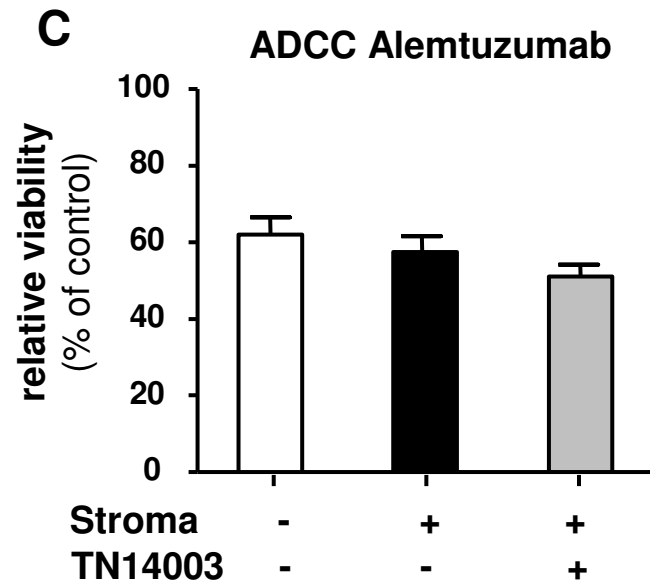
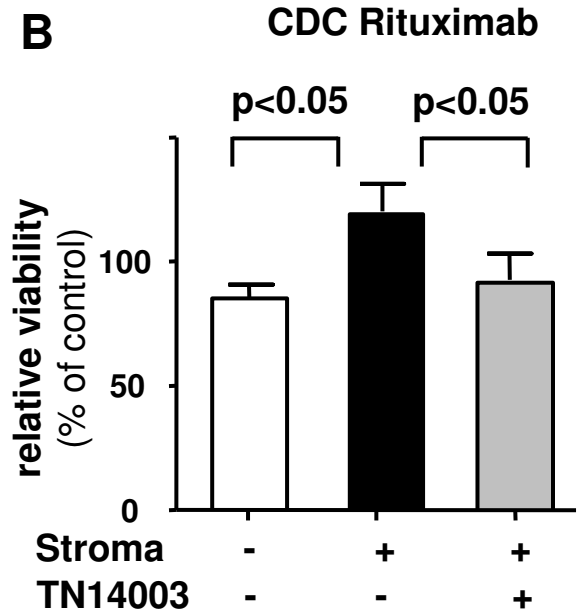
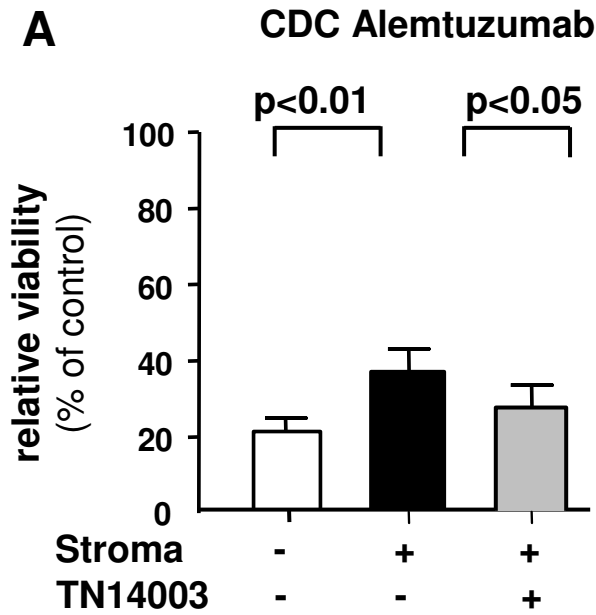


B



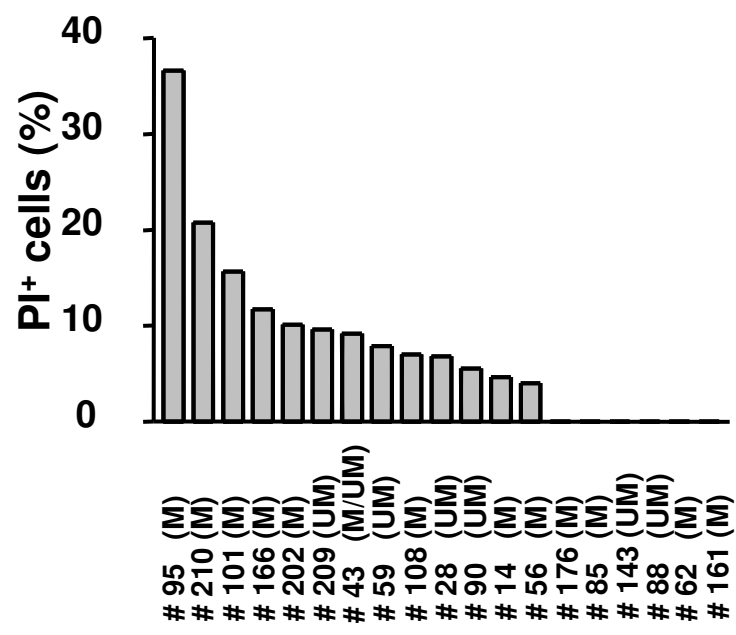
C



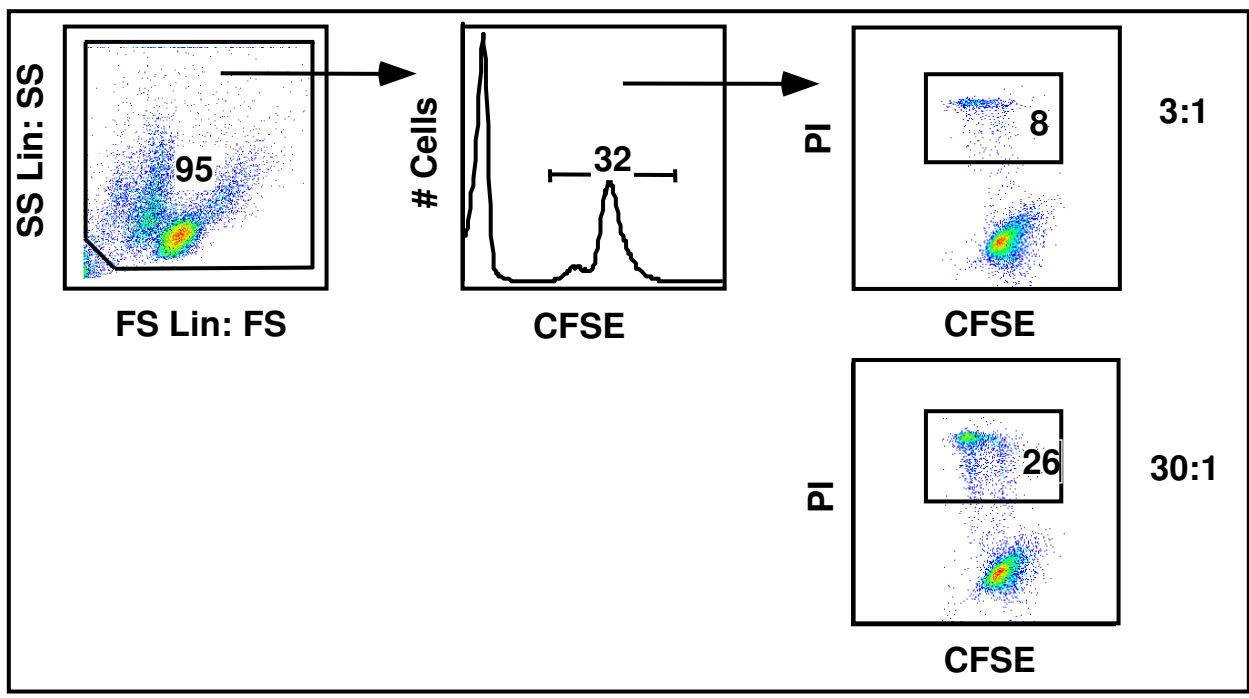


1
2
3
4
5
6
7
8
9
10
11
12
13
14
15
16
17
18
19
20
21
22
23
24
25
26
27
28
29
30
31
32
33
34
35
36
37
38
39
40
41
42
43
44
45
46
47
48
49
50
51
52
53
54
55
56
57
58
59
60

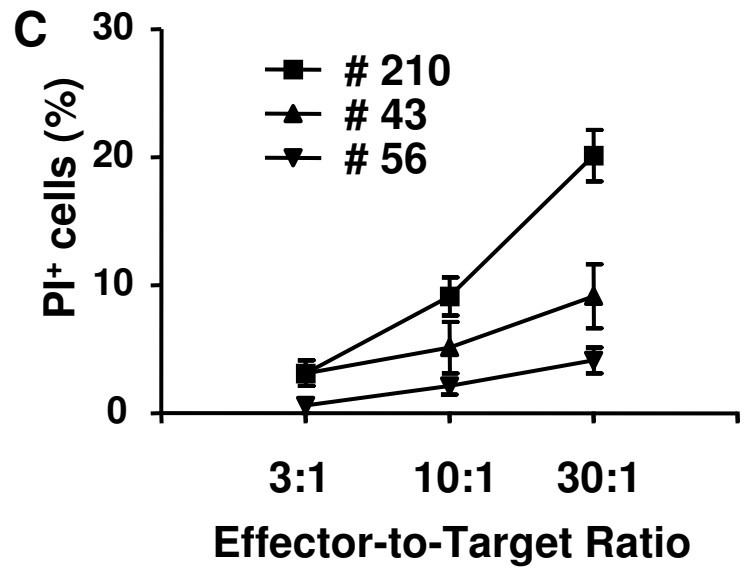
A



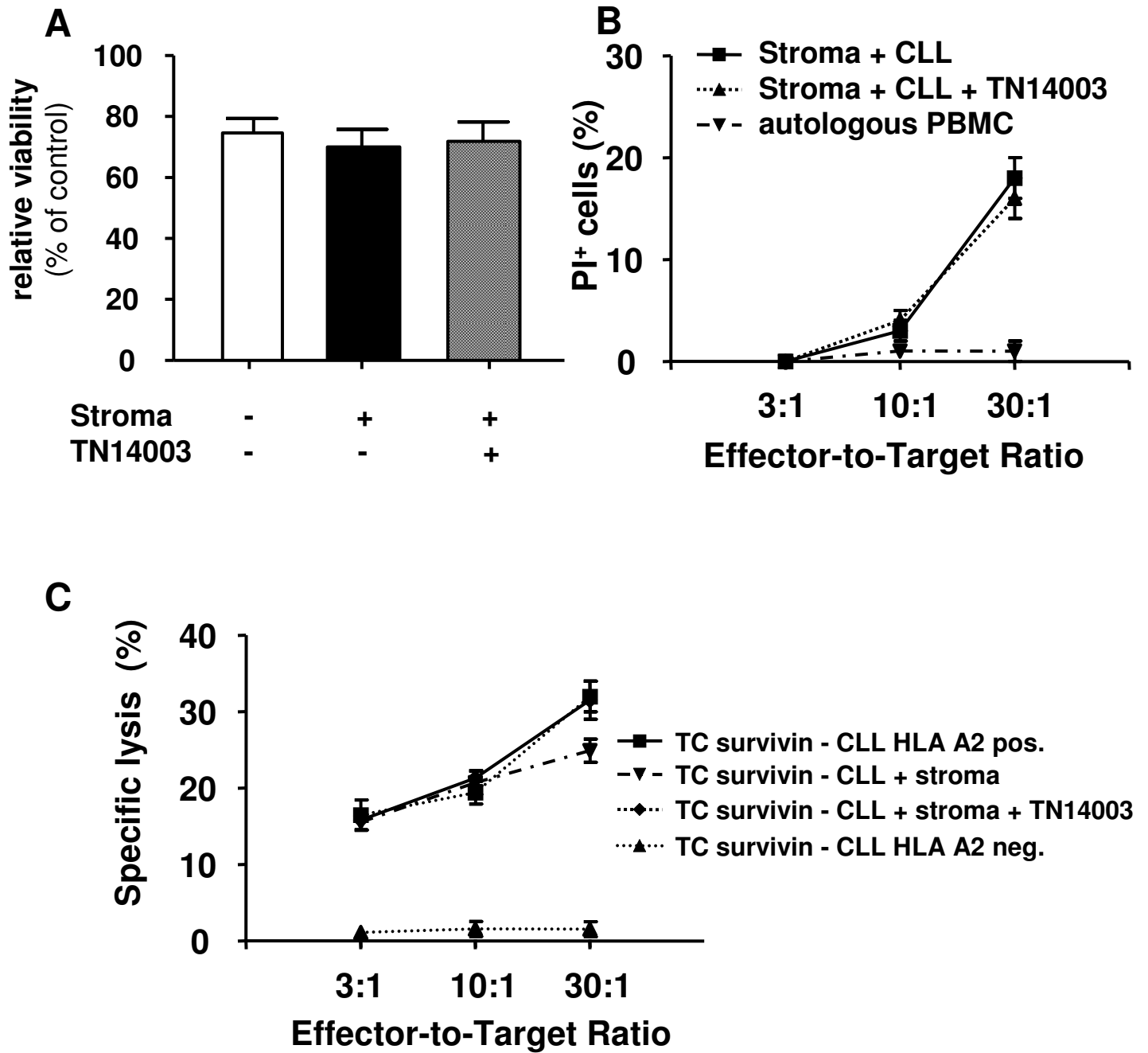
B



C



1
2
3
4
5
6
7
8
9
10
11
12
13
14
15
16
17
18
19
20
21
22
23
24
25
26
27
28
29
30
31
32
33
34
35
36
37
38
39
40
41
42
43
44
45
46
47
48
49
50
51
52
53
54
55
56
57
58
59
60

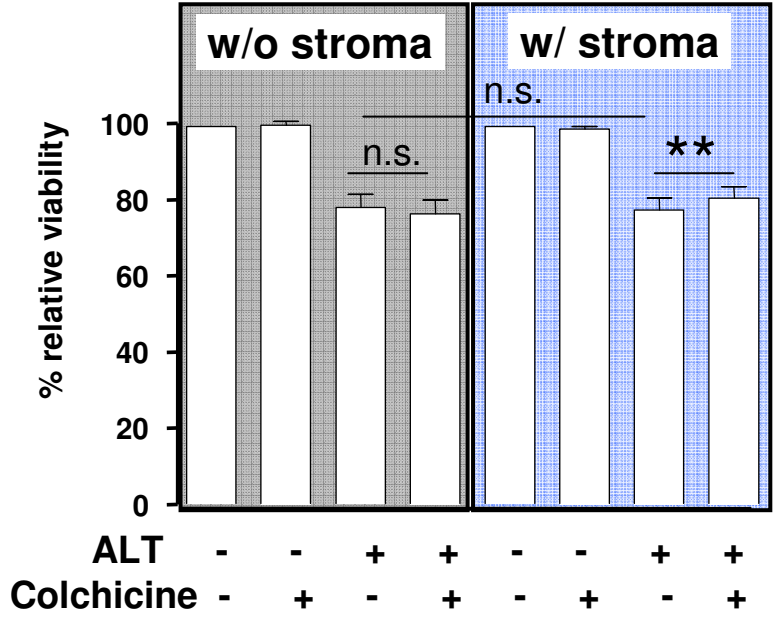


1
2
3
4
5
6
7
8
9
10
11
12
13
14
15
16
17
18
19
20
21
22
23
24
25
26
27
28
29
30
31
32
33
34
35
36
37
38
39
40
41
42
43
44
45
46
47
48
49
50
51
52
53
54
55
56
57
58
59
60

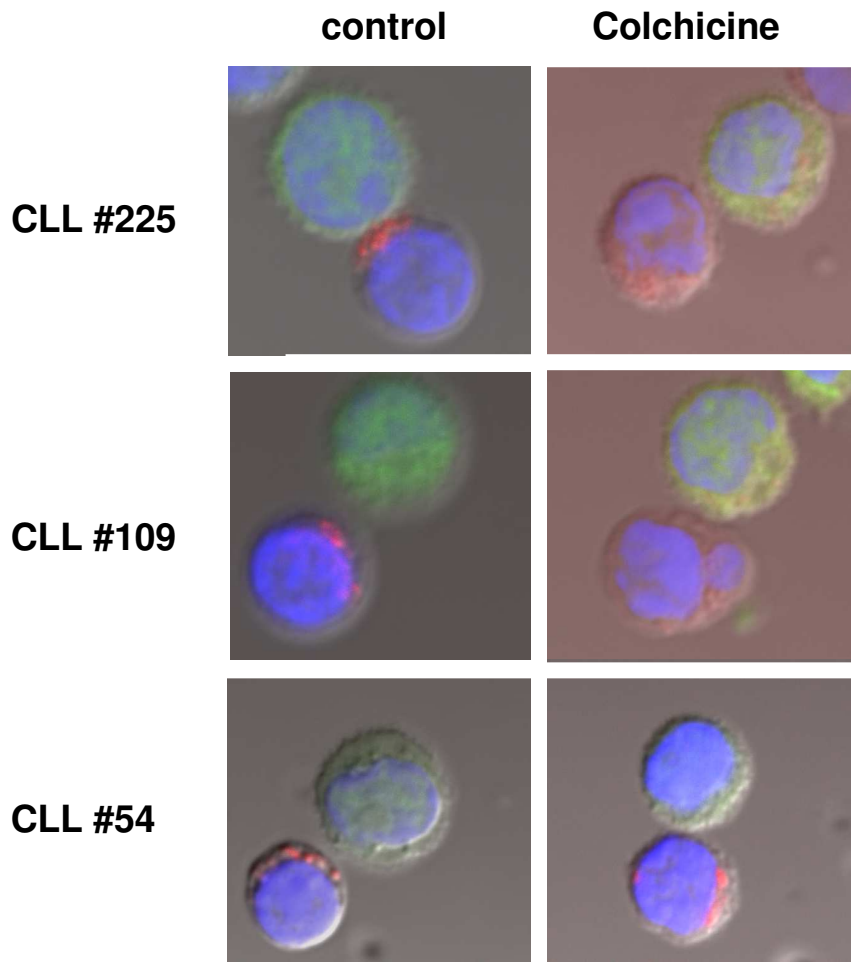
Figure 5

1
2
3
4
5
6
7
8
9
10
11
12
13
14
15
16
17
18
19
20
21
22
23
24
25
26
27
28
29
30
31
32
33
34
35
36
37
38
39
40
41
42
43
44
45
46
47
48
49
50
51
52
53
54
55
56
57
58
59
60

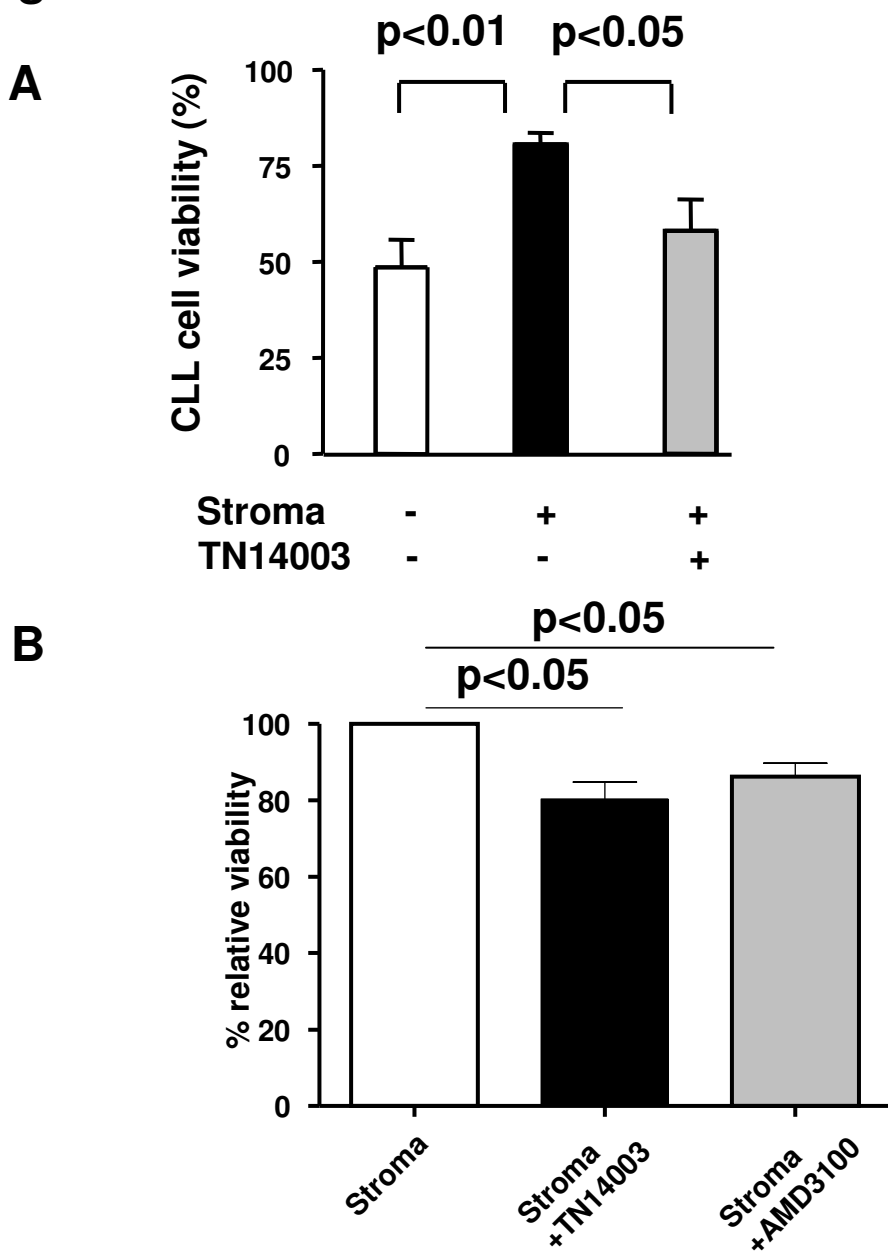
A



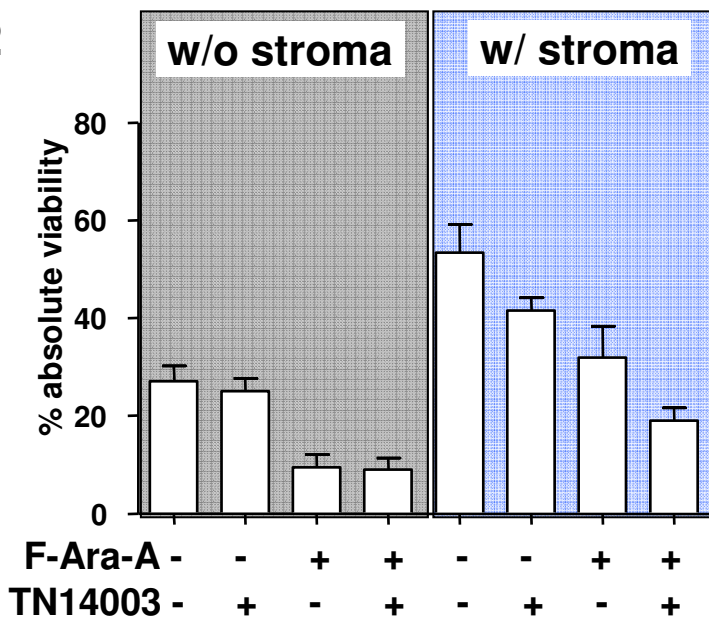
B



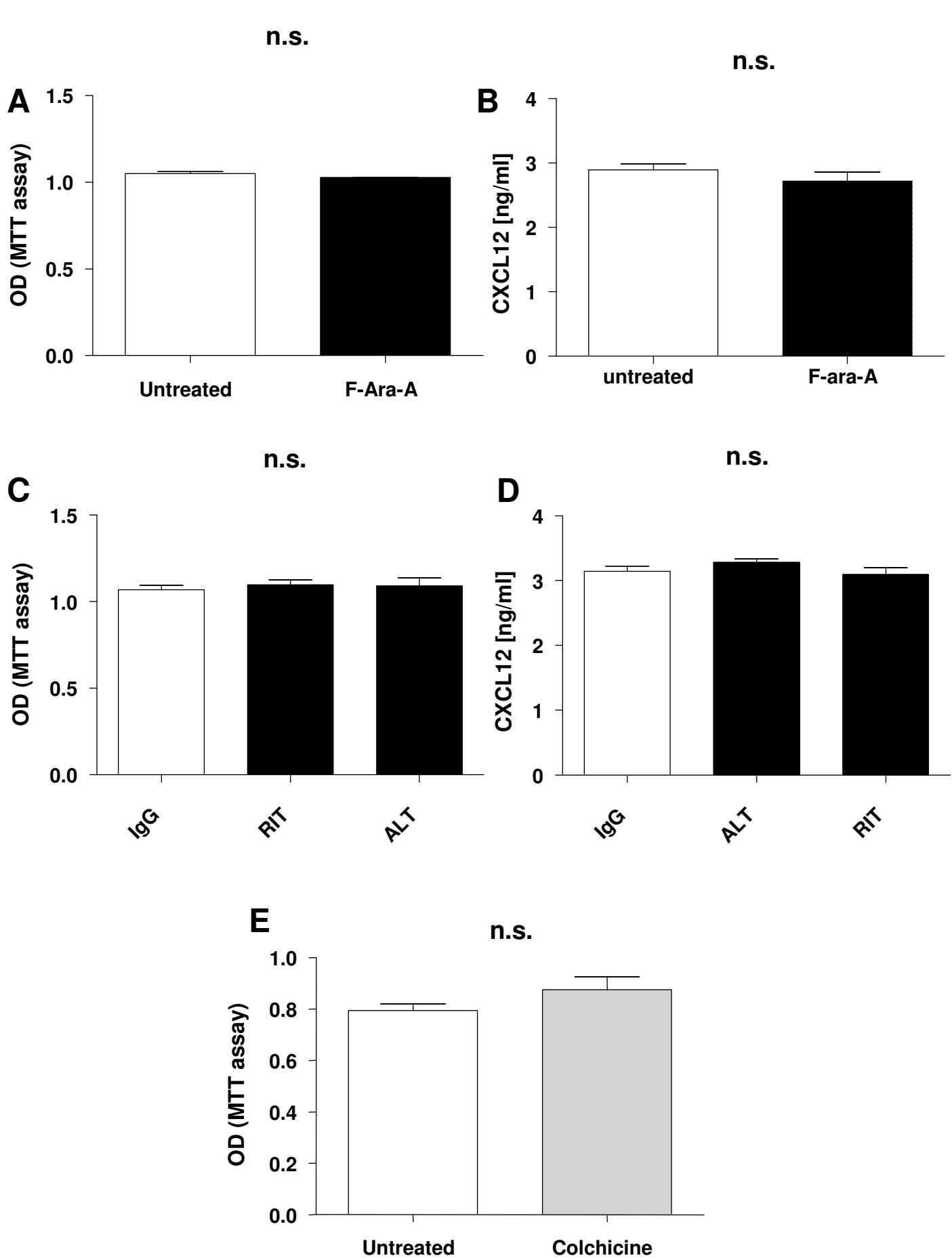
SI Figure 1



SI Figure 2

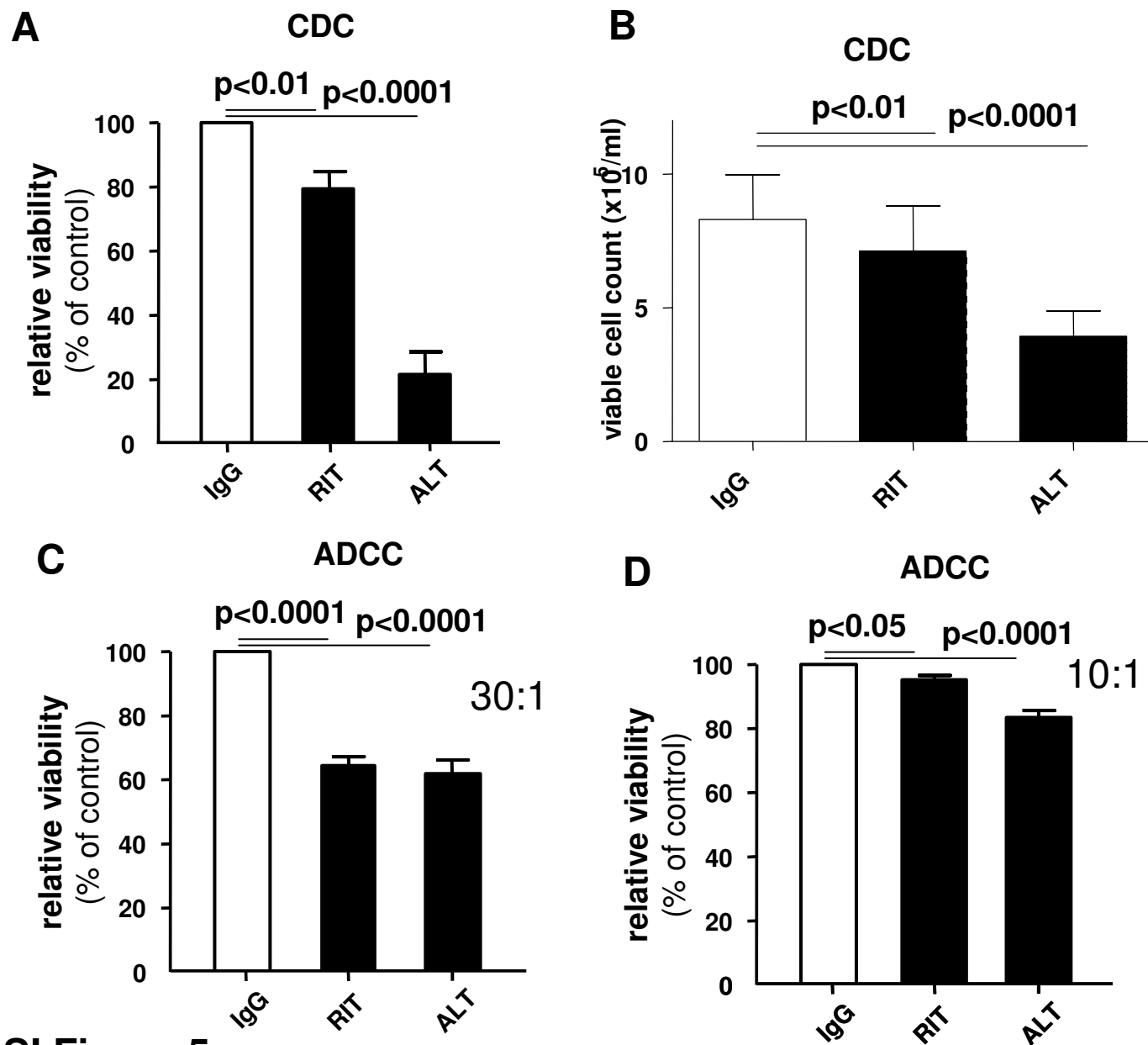


SI Figure 3

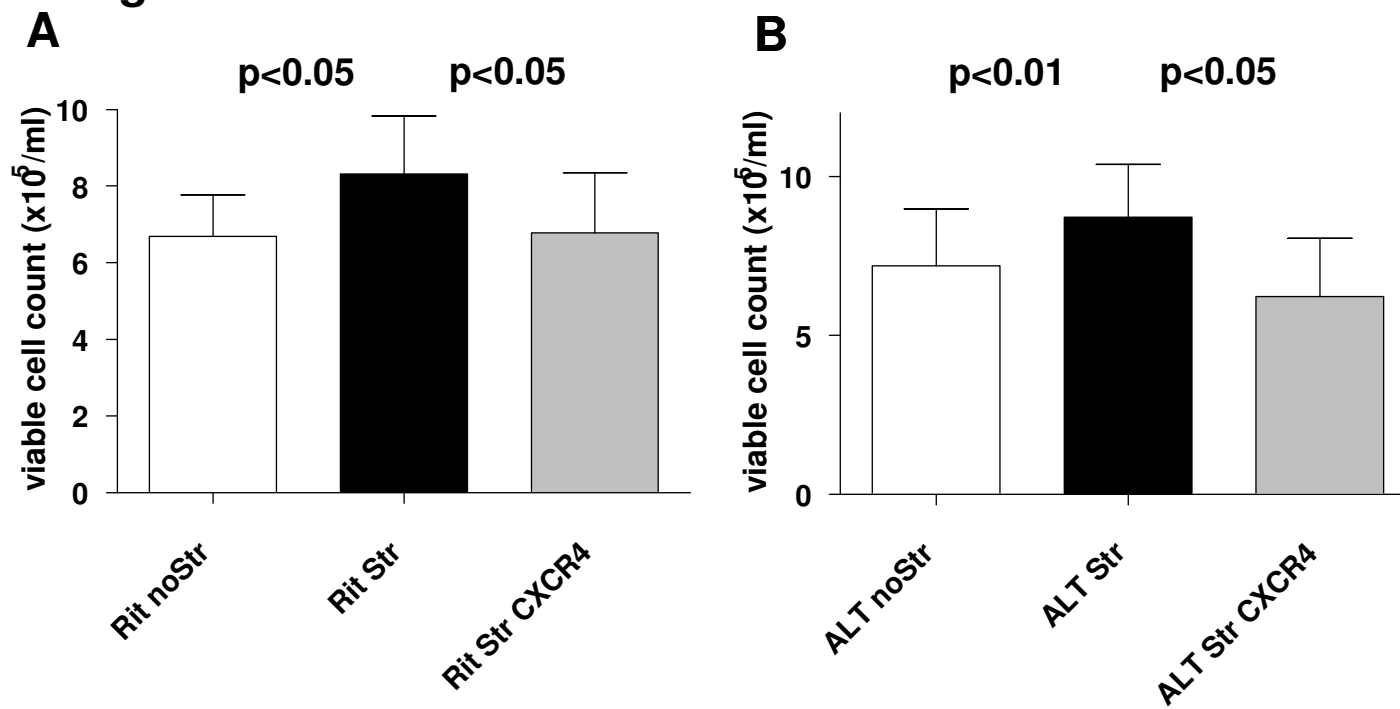


1
2
3
4
5
6
7
8
9
10
11
12
13
14
15
16
17
18
19
20
21
22
23
24
25
26
27
28
29
30
31
32
33
34
35
36
37
38
39
40
41
42
43
44
45
46
47
48
49
50
51
52
53
54
55
56
57
58
59
60

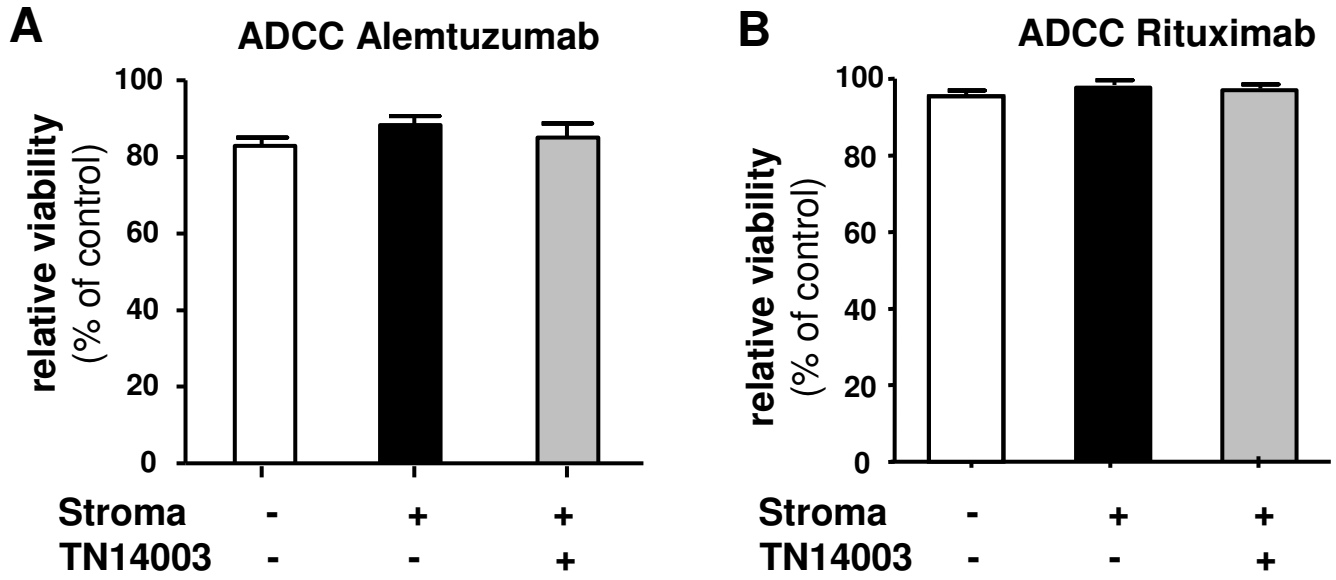
SI Figure 4



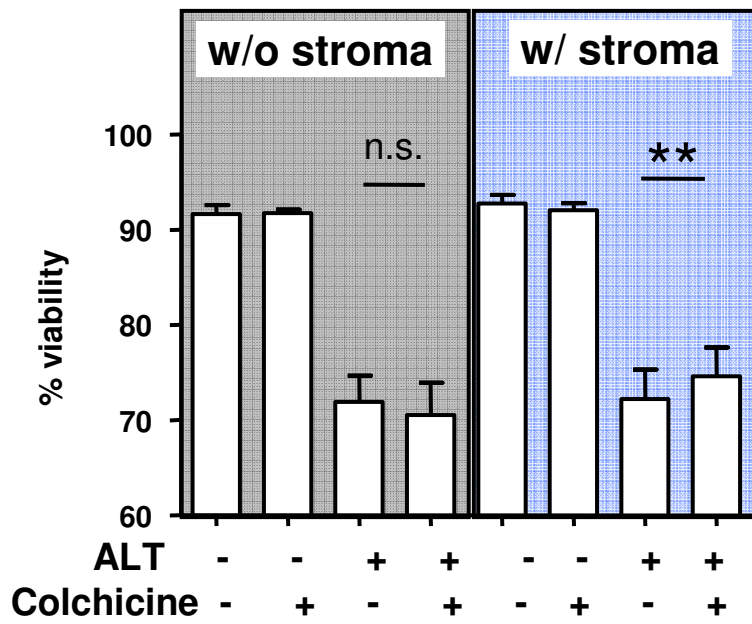
SI Figure 5



SI Figure 6



SI Figure 7



1
2
3
4
5
6
7
8
9
10
11
12
13
14
15
16
17
18
19
20
21
22
23
24
25
26
27
28
29
30
31
32
33
34
35
36
37
38
39
40
41
42
43
44
45
46
47
48
49
50
51
52
53
54
55
56
57
58
59
60

| CLL # | Age | Sex | Rai | Binet | IgV _H | % mut. | ZAP70 | Gen. Ab. | Prior therapy (at least 6 month ago) |
|---------|-----|-----|-----|-------|------------------|-----------|----------|--------------------|--------------------------------------|
| 95 | 69 | M | 2 | B | M | 2.1 | positive | Del13q14 | Chlorambucil |
| 210 | 68 | F | 1 | A | M | 6.1 | negative | n.d. | None |
| 101 | 67 | M | 4 | C | M | 3.1 | negative | Del13q14 | Chlorambucil |
| 166 | 85 | F | 0 | A | M | 6.8 | negative | Del13q14 | None |
| 202 | 69 | M | 4 | C | n.d. | | negative | Del13q14 | Fludarabine |
| 209 | 66 | M | 0 | A | UM | 0 | positive | n.d. | None |
| 43 | 57 | M | 2 | B | M / UM | 7.2 / 0.7 | negative | Trisomy 12 | None |
| 59 | 56 | M | 4 | C | UM | 0 | positive | Del17p13 | Fludarabine |
| 108 | 68 | M | 0 | A | n.d. | | negative | n.d. | None |
| 28 | 66 | F | 1 | A | UM | 0 | positive | None | Chlorambucil |
| 90 | 74 | M | 3 | B | UM | 0 | n.d. | Del13q14 | Chlorambucil |
| 14 | 71 | M | 0 | A | M | 4.1 | negative | Del13q14 homozygot | None |
| 56 | 67 | F | 1 | A | M | 7.5 | negative | Del13q14 | None |
| 176 | 71 | F | 0 | A | n.d. | | negative | Del13q14 | None |
| 85 | 73 | M | 2 | A | M | 10.8 | negative | Del13q14 | None |
| 143 | 69 | F | 1 | B | UM | 0 | n.d. | Trisomy 12 | Chlorambucil |
| 88 | 66 | M | 1 | B | UM | 0 | n.d. | Trisomy 12 | Chlorambucil |
| 62 | 68 | F | 2 | A | M | 3.8 | negative | Trisomy 3 | None |
| 161 | 71 | M | 0 | A | M | 6.8 | n.d. | Del13q14 biallelic | none |
| 140 | 55 | M | 2 | A | M | 4,8 | n.d. | Del13q14 | none |
| 146 | 69 | M | 0 | A | M | 8,9 | negativ | Del13q14 | none |
| 77 | 58 | M | 1 | A | n.d. | | n.d. | | none |
| 23 | 67 | M | 2 | B | UM | 0 | n.d. | Del13q14, Del17p13 | none |
| 69, 183 | 78 | M | 3 | C | UM | 1,3 | positiv | none | none |
| 91 | 45 | M | 0 | A | M | 3,4 | n.d. | Del13q14 | none |
| 107 | 74 | F | 2 | B | M | 3,1 | negativ | keine | Chlorambucil |
| 100 | 73 | F | 2 | A | M | 8,2 | negativ | Del13q14 | Chlorambucil, Fludarabin |
| 45 | 59 | M | 2 | A | M | 6,9 | negativ | Del13q14 | none |
| 191 | 69 | F | 0 | A | M | 9,9 | n.d. | n.d. | none |
| 109 | 70 | M | 2 | A | UM | 0 | n.d. | Del13q14 | Fludarabin, Bendamustin |
| 225 | 60 | F | 4 | C | M | | n.d. | Del 13q14 | Chlorambucil |
| 54 | 48 | M | 2 | B | UM | 0 | pos | Del18p19 | Fludarabin |

1
2
3
4
5
6
7
8
9
10
11
12
13
14
15
16
17
18
19
20
21
22
23
24
25
26
27
28
29
30
31
32
33
34
35
36
37
38
39
40
41
42
43
44
45
46
47
48
49
50
51
52
53
54
55
56
57
58
59
60