



**HAL**  
open science

## Circumscription of a monophyletic family for the tapaculos (Aves: Rhinocryptidae): in and out

Per G. P. Ericson, Storrs L. Olson, Martin Irestedt, Herculano Alvarenga, Jon Fjeldså

### ► To cite this version:

Per G. P. Ericson, Storrs L. Olson, Martin Irestedt, Herculano Alvarenga, Jon Fjeldså. Circumscription of a monophyletic family for the tapaculos (Aves: Rhinocryptidae): in and out. *Journal für Ornithologie = Journal of Ornithology*, 2009, 151 (2), pp.337-345. 10.1007/s10336-009-0460-9 . hal-00568355

**HAL Id: hal-00568355**

**<https://hal.science/hal-00568355>**

Submitted on 23 Feb 2011

**HAL** is a multi-disciplinary open access archive for the deposit and dissemination of scientific research documents, whether they are published or not. The documents may come from teaching and research institutions in France or abroad, or from public or private research centers.

L'archive ouverte pluridisciplinaire **HAL**, est destinée au dépôt et à la diffusion de documents scientifiques de niveau recherche, publiés ou non, émanant des établissements d'enseignement et de recherche français ou étrangers, des laboratoires publics ou privés.

1  
2  
3  
4  
5  
6  
7  
8  
9  
10  
11  
12  
13  
14  
15  
16  
17  
18  
19  
20  
21  
22  
23  
24  
25  
26  
27  
28  
29  
30

**Circumscription of a monophyletic family for the tapaculos  
(Aves: Rhinocryptidae): *Psiloramphus* in and *Melanopareia* out**

Per G. P. Ericson <sup>1,6</sup>, Storrs L. Olson <sup>2</sup>, Martin Irestedt <sup>3</sup>, Herculano Alvarenga <sup>4</sup>,  
and Jon Fjeldså <sup>5</sup>

<sup>1</sup> Department of Vertebrate Zoology, Swedish Museum of Natural History, P.O. Box 50007, SE–10405 Stockholm, Sweden

<sup>2</sup> Division of Birds, Department of Vertebrate Zoology, National Museum of Natural History, P.O. Box 37012, Smithsonian Institution, Washington, D.C. 20013–7012, USA

<sup>3</sup> Molecular Systematics Laboratory, Swedish Museum of Natural History, P.O. Box 50007, SE–10405 Stockholm, Sweden

<sup>4</sup> Museu de História Natural de Taubaté, Rua Juvenal Dias de Carvalho, 111, Taubaté, SP, CEP 12070–640, Brazil

<sup>5</sup> Zoological Museum, University of Copenhagen, Universitetsparken 15, DK–2100 Copenhagen, Denmark.

<sup>6</sup> Corresponding author: [per.ericson@nrm.se](mailto:per.ericson@nrm.se), phone: +46 8 51954117, fax: +46 8 51954212

## ABSTRACT

31 The tapaculos (Rhinocryptidae) are tracheophone, suboscine birds restricted to South  
32 and Central America. Most tapaculos share a number of internal and external  
33 characteristics that have been used to define the family taxonomically. The genera  
34 *Melanopareia* and *Psiloramphus* do not fully fit this pattern and have caused  
35 considerable dispute among taxonomists since they were first described. In this paper  
36 we delimit the systematic boundaries of the tapaculos and assess their generic  
37 relationships by an analysis of molecular sequence data. The results show that while  
38 *Psiloramphus* is nested well within the Rhinocryptidae, *Melanopareia* falls far outside  
39 that clade. A new family is erected for *Melanopareia*.

## 41 INTRODUCTION

42 The impudently named tapaculos (Rhinocryptidae) are a small group of tracheophone,  
43 suboscine passerines whose greatest generic diversity is in southern South America.  
44 Most are large-footed, strong-legged ground birds reminiscent of some of the ground-  
45 dwelling antthrushes (Formicariidae), with which they were often associated. The  
46 family is generally well defined by the presence of operculate nostrils, a tracheophone  
47 syrinx, a somewhat curved humerus and a four-notched sternum (Ames 1971,  
48 Feduccia and Olson 1982, Maurício et al. 2008). Thus, Krabbe and Schulenberg  
49 (2003: 748) considered that the "tapaculos constitute a well-knit group the members  
50 of which are united by several derived characters. Only the genera *Melanopareia* and  
51 *Psiloramphus* differ to such a degree that their systematic position as tapaculos could  
52 be disputed." Furthermore, the phylogenetic relationships within the family  
53 Rhinocryptidae are poorly known, particularly regarding the placement of *Liosceles*  
54 and *Acropternis*, and the large austral species of *Pteroptochos* and *Scelorchilus*.

55 The early taxonomic history of the group was ably summarized by Sclater  
56 (1874). d'Orbigny (1837) first erected a family "Rhinomyidaeae" (sic., p. 192) for  
57 *Pteroptochos* and his *Rhinomya* (= *Rhinocrypta*) using the operculate nostril to  
58 separate them from the Formicariidae. However, there was no coherent understanding  
59 of the suboscine groups until their distinction from the oscines was established by the  
60 pioneering work of Müller (1847) on the syrinx, Müller showed that *Scytalopus* was a  
61 tracheophone suboscine and not a wren (Troglodytidae) and also that *Scytalopus* and  
62 *Pteroptochus* differed from other known passerines in having a 4-notched sternum.

63 Sclater's (1874) "Pteroptochidae" comprised *Scytalopus* (including the type  
64 species of what later became *Myornis* Chapman, 1915), *Merulaxis*, *Liosceles*,  
65 *Pteroptochos* (including the type species of what later became *Teledromas* Wetmore  
66 and Peters, 1922, and *Scelorchilus* Oberholser, 1923), *Rhinocrypta*, *Hylactes* (now  
67 included in *Pteroptochos*), *Acropternis*, and *Triptorhinus* (= *Eugralla*). This  
68 composition of the group was essentially maintained until Peters (1951), except for  
69 the problem genera *Psiloramphus* and *Melanopareia*.

70 The three or four species of *Melanopareia* differ from other tapaculos by their  
71 rather slender build and boldly and attractively patterned plumage, and by sharing a  
72 semi-concealed white dorsal patch with various true antbirds (Thamnophilidae). They  
73 were originally described in the genus *Synallaxis* (Furnariidae), in which Sclater  
74 (1890) later submerged the genus. Salvin (1876) described a new species from  
75 Ecuador as *Formicivora speciosa*, duly recognized in that combination by Sclater  
76 (1890:251) and others until Hellmayr (1906:334) showed that this was a synonym of  
77 *Synallaxis elegans* Lesson, in which genus Hellmayr continued to place it while  
78 regarding Salvin's allocation of it to *Formicivora* with incredulity. Ridgway (1909)  
79 appears to have overlooked this when he created a new genus *Rhoporchilis* for  
80 *Formicivora speciosa*. It was Hellmayr (1921) who eventually established the modern  
81 concept of the genus in showing that *Synallaxis elegans*, *S. torquata*, and *S.*  
82 *maximiliani* were congeneric and would all fall under Reichenbach's earlier generic  
83 name *Melanopareia* and "find their natural place in the Formicariidae", where they  
84 stayed for only a few years (e.g. Cory and Hellmayr 1924). Next came the observation  
85 of W.D.W. Miller that the sternum of *Melanopareia* was 4-notched – information that  
86 was conveyed to and presented by Wetmore (1926: 292). On this basis, Peters (1951)  
87 included *Melanopareia* in the Rhinocryptidae, where it has resided since.

88 The other problem species, the Bamboo-wren *Psilorhamphus guttatus*, is a  
89 small bamboo specialist with a rather long, slender bill, a long tail and relatively weak  
90 feet, so that it bears little resemblance to large-footed terrestrial tapaculos (Fig. 1).  
91 From the beginning (Ménétriés 1835), it was placed with the antbirds in the  
92 Myiotherinae (=Formicariidae). Sclater (1858:243) associated *Psilorhamphus* with  
93 *Ramphocaenus* (which is now in the oscine family Polioptilidae) in the Formicariidae  
94 with the comment that these genera "might perhaps be more naturally placed as a  
95 distinct subfamily of Pteroptochidae [=Rhinocryptidae]" despite the fact that "there is  
96 little external difference between the appearance of these birds and the true Wrens

97 [Troglodytidae]". We are not aware, however, of any instance in which  
98 *Psilorhamphus* was placed in either the Troglodytidae or in a family with only  
99 sylviid-like genera, as might be inferred from Krabbe and Schulenberg (2003).  
100 *Psilorhamphus* continued to be associated with *Ramphocaenus* in the Formicariidae –  
101 e.g. Sclater (1890) and Cory and Hellmayr (1924:205) – although in the latter  
102 reference it was noted that W.D.W. Miller would show *Psilorhamphus* and  
103 *Ramphocaenus* to "constitute a separate family" in "a paper shortly to be published."  
104 Peters (1951: 213) later explained that Miller's death prevented publication of his  
105 results but that Wetmore (1943:306) had shown *Ramphocaenus* to have an oscine  
106 syrinx, and had told Peters that *Microbates* likewise was oscine and that he thought  
107 based on external morphology that *Psilorhamphus* was also probably oscine.  
108 Therefore, Peters postponed his treatment of those genera for a future volume treating  
109 Sylviidae. Sick (1954) placed *Ramphocaenus* in the Sylviidae while provisionally  
110 referring *Psilorhamphus* to the Formicariidae. Then, Plótnick (1958) revealed that  
111 *Psilorhamphus* had a 4-notched sternum, a tracheophone syrinx, and had other  
112 characters, including an operculate nostril, indicating that it should be placed in the  
113 Rhinocryptidae. Thus, in Peters' Checklist *Psilorhamphus* appears as an addendum to  
114 the Rhinocryptidae that appeared in the volume on Sylviidae (Paynter 1964).

115 Heimerdinger and Ames (1967) confirmed that the rhinocryptids they  
116 examined all had a 4-notched sternum but also showed that this condition obtained in  
117 at least two genera of grallarine Formicariidae, which was confirmed by Feduccia and  
118 Olson (1982).

119 Ames (1971) made a thorough study of the anatomy of the syrinx in passerine  
120 birds and examined *Melanopareia* first-hand but had to rely on the description of  
121 Plótnick (1958) for *Psilorhamphus*. Although he noted that the cartilaginous elements  
122 of *Melanopareia* differed from all other tapaculos examined, he found no grounds for  
123 excluding either *Melanopareia* or *Psilorhamphus* from the Rhinocryptidae.

124 Feduccia and Olson (1982) made the much unexpected discovery that the  
125 stapes in *Melanopareia* was of the primitive oscine type with a flattened footplate,  
126 rather than having an expanded, bulbous, fenestrate footplate as in all other suboscine  
127 birds. They went on to show other morphological similarities (which is all they ever  
128 claimed they were) between some of the Rhinocryptidae and the oscine Menurae  
129 (*Menura* and *Atrichornis*) of Australia. Although this observation was dismissed on  
130 the grounds that the characters involved are either primitive or convergent (Krabbe

131 and Schulenberg 2003), the fact remains that the oscines and suboscines had to share a  
132 common ancestor and that the ancestor very likely looked like *Atrichornis*,  
133 *Melanopareia*, or one of the Rhinocryptidae such as *Scelorchilus*.

134 This paper aims to delimit the boundaries of the tapaculos and assess generic  
135 relationships within the group, supplementing the very detailed ongoing studies of  
136 relationships and speciation of small tapaculos (notably *Scytalopus*; Maurício et al.  
137 2008, Cadena et al. unpublished) by providing a broader phylogenetic framework for  
138 the family.

139

## 140 **MATERIALS AND METHODS**

### 141 *Taxon sampling, amplification and sequencing*

142 This study includes representatives of all genera traditionally recognized in  
143 Rhinocryptidae (e.g. Ridgely and Tudor 1994, Krabbe and Schulenberg 2003),  
144 including representatives of the large genus *Scytalopus*, including one representative  
145 (*indigoticus*) of the “blue” species, which were recently placed in a separate genus  
146 *Eleoscytalopus* (Maurício et al. 2008). Three of the authors have significant field  
147 experience concerning the biology and vocalizations of tapaculos, and this was  
148 supplemented with comments and analyses of sound archives by Niels Krabbe (pers.  
149 comm.). Representatives of the main lineages within the tracheophone radiation serve  
150 as outgroups (Ridgely and Tudor 1994, Irestedt et al. 2002, Krabbe and Schulenberg  
151 2003, Chesser 2004).

152 Three nuclear gene regions, myoglobin intron 2, ornithine decarboxylase  
153 (ODC) introns 6 to 7, and glyceraldehyde-3-phosphodehydrogenase (G3PDH) intron  
154 11, were sequenced and used to estimate phylogenetic relationships. For each gene  
155 and taxon, multiple sequence fragments were obtained by sequencing with different  
156 primers. These sequences were assembled to complete sequences with SEQMAN II™  
157 (DNASTAR Inc.). Positions where the nucleotide could not be determined with  
158 certainty were coded with the appropriate IUPAC code. GenBank accession numbers  
159 are given in Table 1. See Irestedt et al. (2002), Allen and Omland (2003), and Fjeldså  
160 et al. (2003) for extractions, amplifications, and sequencing procedures for fresh  
161 tissue/blood samples. Corresponding laboratory procedures for study skins are  
162 detailed in Irestedt et al. (2006).

163

### 164 *Phylogenetic inference and model selection*

165 Due to the rather low number of insertions in the introns, the combined sequences  
166 could easily be aligned by eye. All gaps have been treated as missing data in the  
167 analyses. Bayesian inference (see, e.g., Holder and Lewis 2003; Huelsenbeck et al.  
168 2001) was used to estimate the phylogenetic relationships. The models for nucleotide  
169 substitutions used in the analyses were selected for each gene individually by  
170 applying the Akaike Information Criterion (AIC, Akaike 1973) and the program  
171 MrModeltest 2.2 (Nylander 2005) in conjunction with PAUP\* (Swofford 1998).

172 Posterior probabilities of trees and parameters in the substitution models were  
173 approximated with MCMC and Metropolis coupling using the program MrBayes  
174 3.1.1 (Ronquist and Huelsenbeck 2003). Analyses were performed for both the  
175 individual gene partitions and the combined data set. In the analysis of the combined  
176 data set, the models selected for the individual gene partition were used. The chains  
177 for the individual gene partitions were run for 5 million generations while the chains  
178 for the combined data set were run for 10 million generations. Trees were sampled  
179 every 100th generations, and the trees sampled during the burn-in phase (i.e., before  
180 the chain had reached its apparent target distribution) were then discarded after  
181 checking for convergence, final inference was made from the concatenated outputs.

182

### 183 *Sequence lengths and alignments*

184 We were able to sequence all three gene regions almost completely for all included  
185 taxa (a few sequences miss some base pairs in the 3' or 5' ends in the myoglobin or the  
186 ODC regions, and in the ODC region all sequences obtained from study skins lack a  
187 short fragment of 22 bp in the exon 7). Taking into account the missing base pairs, the  
188 sequences obtained varied in length between 667–701 bp for the myoglobin intron 2,  
189 and between 313–363 bp for the G3PDH intron 11, except for the two antthrushes  
190 *Chamaeza* and *Formicarius* which contains two large deletions in the G3PDH intron  
191 11 which makes these sequences 251–252 bp long. In the ODC region all  
192 Rhinocryptidae and Furnariidae taxa have a large deletion in intron 7 and the  
193 sequences from these taxa range between 403 and 500 bp, while the sequences for all  
194 other taxa range between 586 and 624 bp.

195 Most indels observed in the introns were autapomorphic and mainly found in  
196 certain variable regions. Some indels vary in length between taxa, which makes it  
197 difficult to know if these indels are homologous or represent independent evolutionary  
198 events. Several apparently synapomorphic indels were also observed when mapping

199 the data onto the tree topology obtained from the Bayesian analyses of the combined  
200 data set. A few indels were also found to be incongruent with the phylogenetic tree  
201 obtained from the analysis of the combined data set. These were generally found in  
202 the most variable regions and some of the single base pair insertions actually consist  
203 of different bases. For more details of indel length and positions see the alignments of  
204 the individual gene regions deposited at Genbank, accession numbers XX  
205 (myoglobin), XX (G3PDH), and XX (ODC).

206

#### 207 *Models for nucleotide substitutions*

208 The priori selection of nucleotide substitution models suggested that the GTR +  $\Gamma$   
209 model had the best fit for all three gene regions, but as the nucleotide state frequencies  
210 and gamma distribution differed between the partitions we applied a partitioned  
211 analysis of the combined data set. After discarding the burn-in phase the inference for  
212 myoglobin and G3PDH were based on a total of 45,000 samples from the posterior,  
213 the inference for ODC were based on a total of 40,000 samples, while the inference  
214 for the combined data set were based on a total of 95,000 samples. The posterior  
215 distribution of topologies is presented as a majority-rule consensus tree from the  
216 combined analysis in Figure 2.

217

## 218 **RESULTS**

219 The trees obtained from the Bayesian analyses of the individual gene partitions (Fig.  
220 3) are overall topologically congruent. *Melanopareia* clusters with Thamnophilidae  
221 and Conopophagidae and we can therefore reject it as a member of the family  
222 Rhinocryptidae with high confidence. Apart from this, all traditional tapaculo genera  
223 form a monophyletic clade within a broader group which also contains Formicariidae  
224 *sensu stricto* and Furnariidae, in agreement with previous molecular studies of  
225 tracheophone suboscines (Irestedt et al. 2002, Chesser 2004).

226 Within the radiation of tapaculos there is also good support for two major  
227 clades. Clade 1 includes *Teledromas*, *Acropternis*, *Rhinocrypta*, *Liosceles* and  
228 *Psilorhamphus* and Clade 2 includes *Scytalopus*, *Eugralla*, *Myornis*, *Merulaxis* and  
229 *Eleoscytalopus*. The only conflict within the rhinocryptid radiation supported by  
230 posterior probabilities above 0.95 involves determining to which of the previous two  
231 clades *Pteroptochos* and *Scelorchilus* belong. In the ODC tree they group with Clade  
232 1 (0.97), whereas the myoglobin tree indicates that these two taxa are sister to the



233 Clade 2 (1.00). In the G3PDH tree this relationship is unresolved. Based on the  
234 overall congruence of the individual gene trees we believe that the tree obtained from  
235 the combined analysis (Fig. 2) represents the best estimate of the phylogenetic  
236 relationship of the tapaculos and in this *Pteroptochos* and *Scelorchilus* fall out as  
237 sister to Clade 2. This tree is fully congruent with the results of studies using other  
238 genetic markers, but with focus on detailed relationships within Clade 2 (Maurício et  
239 al. 2008 and Cadena et al., unpublished).

240

## 241 **DISCUSSION**

242 *Melanopareia* resembles members of the Rhinocryptidae in having the lacrimal bones  
243 partly fused with the ectethmoid (but the lacrimals are lacking in Conopophagidae,  
244 Thamnophilidae, Grallaridae and Formicariidae) and in having a 4-notched sternum.  
245 The significance of these characters is uncertain because of the weak cranial  
246 ossification in these groups and a considerable flexibility (including varying degrees  
247 of developmental asymmetry) in the degree of ossification of the membranes serving  
248 as attachment of pectoral muscles (Heimerdinger and Ames 1967). The molecular  
249 data reject a close relationship of *Melanopareia* to the Rhinocryptidae. With four  
250 closely related extant species, *Melanopareia* represents a long, unbroken phylogenetic  
251 branch, and it may be difficult to tell with confidence whether this clade is nested  
252 within the Conopophagidae-Thamnophilidae complex or represents a relictual, basal  
253 tracheophone type of bird.

254 Irestedt et al. (2002) associated *Teledromas* with *Melanopareia* primarily  
255 because their vocalizations are confusingly similar, and *Teledromas* was considered to  
256 resemble a robust and pale version of *Melanopareia*. Both genera are reported to  
257 share a peculiarity of the pterylography of the flank region, and details of the nasal  
258 operculum and tarsal scutellation, and an X-ray photo suggested almost straight  
259 humeri (approaching those of *Melanopareia*; Irestedt et al. 2002). However, our DNA  
260 data and further examination of skeletal characters reject a closer relationship between  
261 them and places *Teledromas* centrally in Clade 1 of the Rhinocryptidae.

262 *Psilorhamphus* was placed with Polioptiline oscines based on the acutiplantar  
263 tarsus, but a similar tarsal scalation is also found in some antbirds, and osteology and  
264 syringeal morphology suggested placement with Rhinocryptidae. We were able to  
265 confirm from examination of skeletal specimens that *Psilorhamphus* – as well as

266 *Teledromas* – have the expanded footplate of the stapes typical of other suboscines  
267 (except *Melanopareia*).

268 The distinctive appearance of *Psilorhamphus* may result from its divergent  
269 habits (albeit shared with *Myornis*, N. Krabbe pers. comm.), as it generally feeds by  
270 climbing in tangles of vine-like bamboo, occasionally up to 7 m, and it rarely feeds on  
271 the ground. This species is also known for its unbelievably loud and low-pitched  
272 vocalizations (for its small size, 13.5 cm): A fast series of hollow whistles at 0.9–1  
273 kHz. Its sister taxon in Figure 2, *Liosceles*, also gives hollow whistles, but they are  
274 higher pitched (1.3 kHz) and are given at a slower pace; the pace and quality of the  
275 song notes of *Psilorhamphus* is most like the songs of larger species of *Pteroptochos*,  
276 which are even lower pitched (0.5–0.6 kHz). Interestingly, *Psilorhamphus* shares with  
277 *Liosceles* barred posterior underparts and distinctive whitish subterminal spots with a  
278 black outline on the middle and greater wing-coverts. Apart from this, it is difficult to  
279 see any external features supporting the suggested relationships within Clade 1.

280 The possible association of the large Chilean tapaculos (*Pteroptochos*,  
281 *Scelorchilus*) with Clade 2 receives some morphological support, as *Pteroptochos* has  
282 14 rectrices, something that is also found in some species or individuals of *Scytalopus*,  
283 although other representatives of this genus have a reduced number of rectrices or  
284 asymmetrical tails (Krabbe and Schulenberg 2003). Other suboscine birds typically  
285 have 12 rectrices, although there are many cases of reduction. Molecular relationships  
286 within *Pteroptochos* have been analyzed by Chesser (1999).

287 Within Clade 2, the *Myornis-Eugralla-Scytalopus* group is particularly well  
288 defined morphologically by small size and sooty-grey to blackish plumage and  
289 atrophied clavicles, which do not form a fused furcula (Maurício et al. 2008). This  
290 may reflect reduced flying ability of these specialized birds, which tunnel through the  
291 densest parts of the forest understorey. *Myornis* bears some resemblance to *Merulaxis*,  
292 in shape and juvenile plumage (Krabbe and Schulenberg 2003), but our result does  
293 not support such an association. On the other hand, *Myiornis* and *Eugralla* clearly fall  
294 outside the group of species of *Scytalopus* that we studied (except with G3PDH) and  
295 we therefore support keeping them in separate monotypic genera.

296 Under "Incertae sedis", Irestedt et al. (2002) introduced a family  
297 "Melanopareiidae (new family, incl. *Melanopareia* and *Teledromas*)" and this family  
298 name has been accepted by SACC (Proposal #239, 2006). These sources, however,  
299 did not meet the requirements of the International Code of Zoological Nomenclature

300 (ICZN 1999) as it lacked any description purporting to differentiate the taxon from  
301 other taxa, so the name was invalid at that point. The need still remains for separate  
302 family status for the genus, which we re-propose here:

303

304 **Melanopareiidae, new family**

305 Type and only included genus: *Melanopareia* Reichenbach, 1853.

306 Diagnosis: Tracheophone suboscine passeriformes differing from other  
307 Tracheophonae except Rhinocryptidae (and a few other taxa: *Myrmothera*, *Hylopezus*,  
308 *Pittasoma*, *Conopophaga*) in having a 4-notched sternum and differing from the  
309 Rhinocryptidae and all other suboscines in retaining the primitive morphology of the  
310 stapes, with a flat, rather than inflated footplate.

311

312 **Zusammenfassung**

313

314 **Umschreibung einer monophyletischen Familie für die Bürzelstelzer (Aves:**

315 **Rhinocryptidae): *Psiloramphus* rein und *Melanopareia* raus**

316

317 Die Bürzelstelzer (Rhinocryptidae) sind tracheophone, suboscine Vögel, deren  
318 Vorkommen auf Süd- und Mittelamerika beschränkt ist. Die meisten Bürzelstelzer  
319 haben eine Reihe innerer und äußerer Merkmale gemeinsam, die benutzt worden sind,  
320 um die Familie taxonomisch zu definieren. Die Gattungen *Melanopareia* and  
321 *Psiloramphus* passen nicht vollständig in dieses Schema und haben zu beträchtlichen  
322 Disputen unter Taxonomen geführt, seit sie erstmals beschrieben worden sind. In  
323 diesem Artikel stecken wir die systematischen Grenzen der Bürzelstelzer ab und  
324 bewerten ihre Gattungsbeziehungen mit Hilfe einer Analyse molekularer  
325 Sequenzdaten. Die Ergebnisse zeigen, dass *Melanopareia* weit aus dieser Klade  
326 herausfällt, während *Psiloramphus* gut in die Rhinocryptidae hineinpasst. Eine neue  
327 Familie wird für *Melanopareia* eingerichtet.

328

329

330 **Acknowledgements**

331 Our thanks go especially to those researchers who, for years, and often with very  
332 small economic means, have collected the specimens and tissue samples without  
333 which studies like this could not be made. N. Krabbe is thanked for comments to the

334 manuscript. E. Endrigo kindly provided the photo of *Psilorhamphus*. The following  
335 institutions provided samples that have been included in the study: Zoological  
336 Museum of Copenhagen University, Swedish Museum of Natural History, National  
337 Museum of Natural History, American Museum of Natural History and Field Museum  
338 of Natural History. The Swedish Research Council provided financial support for the  
339 laboratory work (grant no. 621–2007–5280 to PE).

340

#### 341 **REFERENCES**

- 342 Akaike H (1973) Information theory as an extension of the maximum likelihood  
343 principle. In: Petrov BN, Csaki F (eds) Second international symposium on  
344 information theory. Akademi Kiado, Budapest, pp 267–281
- 345 Allen ES, Omland KE (2003) Novel intron phylogeny (ODC) supports plumage  
346 convergence in orioles (*Icterus*). *Auk* 120:961–969
- 347 Ames PL (1971) The morphology of the syrinx in passerine birds. *Bull Peabody Mus*  
348 *Nat Hist* 37:1–194
- 349 Chapman FL (1915) The more northern species of the genus *Scytalopus* Gould. *Auk*  
350 32:406–423
- 351 Chesser RT (1999) Molecular systematics of the rhinocryptid genus *Pteroptochus*.  
352 *Condor* 101:439–446
- 353 Chesser RT (2004) Molecular systematics of New World Suboscine birds. *Mol Phyl*  
354 *Evol* 32:11–24
- 355 Cory CB, Hellmayr CE (1924) Catalogue of birds of the Americas and adjacent  
356 islands. Part III. *Field Mus Natural Hist Zool Ser* 13:1–369
- 357 Ericson PGP, Christidis L, Irestedt M, Norman JA (2002) Systematic affinities of the  
358 lyrebirds (Passeriformes: *Menura*), with a novel classification of the major  
359 groups of passerine birds. *Mol Phyl Evol* 25:53–62
- 360 Ericson PGP, Johansson US (2003) Phylogeny of Passerida (Aves: Passeriformes)  
361 based on nuclear and mitochondrial sequence data. *Mol Phyl Evol* 29:126–138
- 362 Ericson PGP, Zuccon D, Ohlson JI, Johansson US, Alvarenga H, Prum RO (2006)  
363 Higher level phylogeny and morphological evolution of tyrant flycatchers,  
364 cotingas, manakins and their allies (Aves: Tyrannida). *Mol Phyl Evol* 40:471–  
365 483

366 Feduccia A, Olson, SL (1982) Morphological similarities between the Menurae and  
367 the Rhinocryptidae, relict passerine birds of the Southern Hemisphere.  
368 *Smithson Contr Zool* 366:1–22

369 Fjeldså J, Irestedt M, Ericson PGP (2005) Molecular data reveal some major  
370 adaptational shifts in the early evolution of the most diverse avian family, the  
371 Furnariidae. *J Ornith* 146:1–13

372 Fjeldså J, Irestedt M, Jönsson KA, Ohlson JI, Ericson PGP (2007) Phylogeny of the  
373 ovenbird genus *Upucerthia*: a case of independent adaptations for terrestrial  
374 life. *Zool Scr* 36:133–141

375 Fjeldså J, Zuccon D, Irestedt M, Johansson US, Ericson PG (2003) *Sapayoa aenigma*:  
376 a New World representative of ‘Old World suboscines’. *Proc R Soc Lond B*.  
377 [Suppl] 270:238–241

378 Heimerdinger MA, Ames PL (1967) Variation in the sternal notches of suboscine  
379 passeriform birds. *Postilla* 105:1–44

380 Hellmayr CE (1906) Critical notes on the types of little-known species of Neotropical  
381 birds. *Novitates Zoologicae* 13:305–352

382 Hellmayr CE (1921) Review of the birds collected by Alcide d'Orbigny. *Novitates*  
383 *Zoologicae* 28:230–276

384 Holder M., Lewis PO (2003) Phylogeny estimation: Traditional and Bayesian  
385 approaches. *Nat Gen* 4:275–284

386 Huelsenbeck J P, Ronquist F, Nielsen R, Bollback JP (2001) Bayesian inference of  
387 phylogeny and its impact on evolutionary biology. *Science* 294:2310–2314

388 International Commission on Zoological Nomenclature (1999) International Code of  
389 Zoological Nomenclature, 4th edn. International Trust for Zoological  
390 Nomenclature, British Museum (Natural History), and University of California  
391 Press.

392 Irestedt M, Fjeldså J, Johansson US, Ericson PGP (2002) Systematic relationships and  
393 biogeography of the tracheophone suboscines (Aves: Passeriformes). *Mol Phyl*  
394 *Evol* 23:499–512

395 Irestedt M, Fjeldså J, Ericson PGP (2004) Phylogeny and morphological plasticity in  
396 woodcreepers (Dendrocolaptinae). *J Avian Biol* 35:280–288

397 Irestedt M, Ohlson JI, Zuccon D, Källersjö M, Ericson PGP (2006) Nuclear DNA  
398 from old collections of avian study skins reveals the evolutionary history of  
399 the Old World suboscines (Aves, Passeriformes). *Zool Scr* 35:567–580

400 Krabbe NK, Schulenberg TS (2003) Family Rhinocryptidae (Tapaculos). In: del Hoyo  
401 J, Elliott A, Christie DA (eds) Handbook of Birds of the World, vol. 8. Lynx  
402 Edicions, Barcelona, pp 748–787

403 Maurício GN, Mata H, Bornschein MR, Cadena CD, Alvarenga H, Bonatto SL (2008)  
404 Hidden genetic diversity in Neotropical birds: molecular and anatomical data  
405 support a new genus for the “*Scytalopus*” *indigoticus* species-group (Aves:  
406 Rhinocryptidae). Mol Phyl Evol 49:125–135

407 Ménériés E (1835) Monographie de la famille des Myiotherinae où sont décrites les  
408 espèces qui ornent le Musée de l'Académie Impériale des Sciences. Mémoires  
409 de l'Académie Impériale des Sciences de Saint-Petersbourg. Ser. 6, 3 (pt  
410 2):443–543

411 Müller J (1847) Über die bisher unbekanntenen typischen Verschiedenheiten der  
412 Stimmorgane der Passerini. Konig. Akad. Wiss. Berline Abhandl. 71 pp

413 Nylander JAA (2005) MrModeltest v.2.2. Program distributed by the author.  
414 Department of Systematic Zoology, Uppsala University, Uppsala

415 Oberholser HC (1923) Note on the generic name *Pteroptochos* Kittlitz. Auk 40:326–  
416 327

417 d'Orbigny AD (1837) Voyage dans l'Amérique Séptentrionale. Vol. 4, part 3,  
418 Oiseaux, Strasbourg: V<sup>e</sup>. Levrault

419 Paynter RA Jr (1964) Family Rhinocryptidae (part). In: Mayr E, Paynter RA Jr (eds)  
420 Check-list of Birds of the World. Museum of Comparative Zoology,  
421 Cambridge, Massachusetts. p 456

422 Peters JL (1951) Check-list of birds of the world, vol. VII. Museum of Comparative  
423 Zoology: Cambridge, Massachusetts.

424 Plótnick R (1958) Posicion [sic] sistemática del género "Psiloramphus"  
425 (Rhinocryptidae, Passeriformes). Physis 21:130–136

426 Reichenbach HGL (1853) Handbuch der speciellen Ornithologie, Die Vögel, part 3.  
427 Dresden

428 Ridgely RS, Tudor G (1994) The Birds of South America, vol II. Oxford University  
429 Press, Oxford

430 Ridgway R (1909) New genera, species, and subspecies of Formicariidae,  
431 Furnariidae, and Dendrocolaptidae. Proc Biol Soc Washington 22:69–74

432 Ronquist F, Huelsenbeck JP (2003) MrBAYES 3: Bayesian phylogenetic inference  
433 under mixed models. Bioinformatics 19:1572–1574

- 434 Salvin O (1876) On some new species of birds from western Ecuador. *Ibis* 6:493–496
- 435 Sclater PL (1858) Synopsis of the American ant-birds (Formicariidae). *Proc Zool Soc*  
436 Lond 1858:232–254
- 437 Sclater PL (1874) On the Neotropical species of the family Pteroptochidae. *Ibis*  
438 4:189–206
- 439 Sclater PL (1890) Catalogue of the birds in the British Museum, vol 15. British  
440 Museum, London
- 441 Sick H (1954) Zur Kenntnis von *Ramphocaenus* (Sylviidae) und *Psilorhamphus*  
442 (Formicariidae). *Bonner Zool. Beitr.* 5:179–190
- 443 Swofford DL (1998) *Paup\**. Phylogenetic analysis using parsimony (\* and other  
444 methods), v.4. Sinauer, Sunderland, Mass.
- 445 Wetmore A (1926) Observations on the birds of Argentina, Paraguay, Uruguay, and  
446 Chile. *Bull United States Nat Mus* 133:1–448
- 447 Wetmore A (1943) The birds of southern Veracruz, Mexico. *Proc United States Nat*  
448 *Mus* 93:215–340
- 449 Wetmore A, Peters JL (1922) A new genus and four new subspecies of American  
450 birds. *Proc Biol Soc Washington* 35:41–46
- 451
- 452
- 453
- 454

455 **Figure 1.** The bamboo-wren *Psilorhamphus guttatus* bears little external resemblance  
456 to typical members of the tapaculo family. With its grey iris, facial expression, bill  
457 shape, and wing-coverts with white dots *Psilorhamphus* instead resembles some  
458 antbirds (*Dysithamnus*, *Myrmotherula*) with which early ornithologists consequently  
459 placed it. Unlike other tapaculos *Psilorhamphus* spends most of the time above the  
460 ground. Photo: Edson Endrigo.

461

462

463 **Figure 2.** Majority rule consensus tree obtained from the Bayesian analyses of the  
464 combined data set (myoglobin intron 2, ODC introns 6 and 7, and G3PDH intron 11).  
465 Posterior probability values are indicated at the node.

466

467

468 **Figure 3.** The majority rule consensus trees obtained from the Bayesian analyses of  
469 the individual genes. A) myoglobin intron 2; B) ornithine decarboxylase introns 6 to  
470 7; and C) glyceraldehyde-3-phosphodehydrogenase intron 11. Posterior probability  
471 values are indicated at the node.

472

473

474 **Table 1:** Specimen data and GenBank accession numbers for samples used in the  
475 study. Samples vouchered with a study skin are indicated by an asterisk. "TP"  
476 indicates that the sample is obtained from toe-pads of an old study skin. Acronyms are  
477 AMNH, American Museum of Natural History, FMNH, Field Museum of Natural  
478 History, Chigaco, USA; NRM, Swedish Museum of Natural History; USNM,  
479 University States National Museum, Washington, USA; ZMUC Zoological Museum  
480 of Copenhagen. References: A, Irestedt et al. (2002); B: Ericson et al. (2002); C:  
481 Irestedt et al. (2004); D: Ericson & Johansson (2003); E: Fjeldså et al. (2005); F:  
482 Ericson et al. (2006); G: Fjeldså et al. (2003); H: Fjeldså et al. (2007).

483

484

485

486

487

488

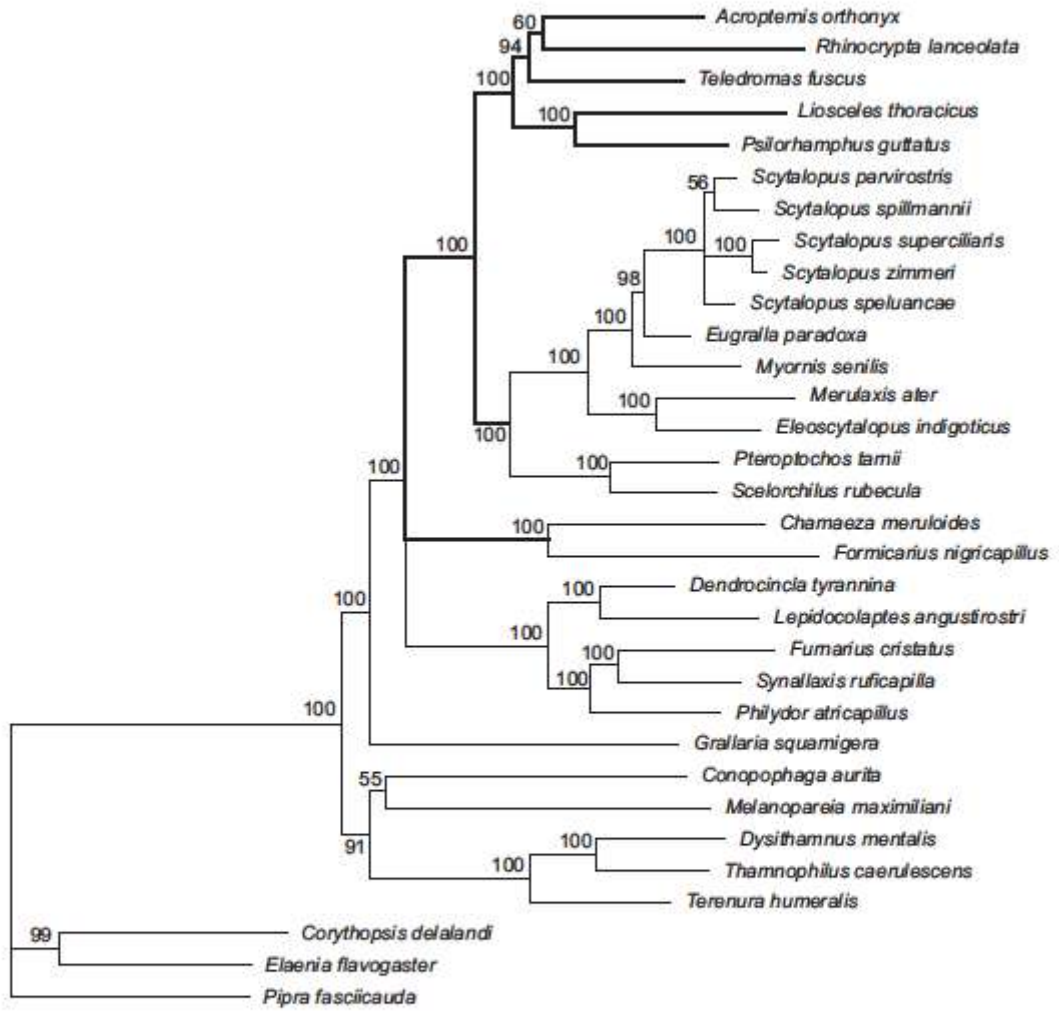


489

490

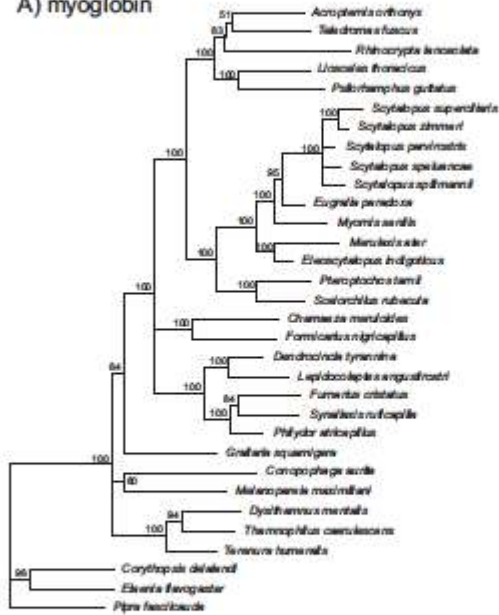


491

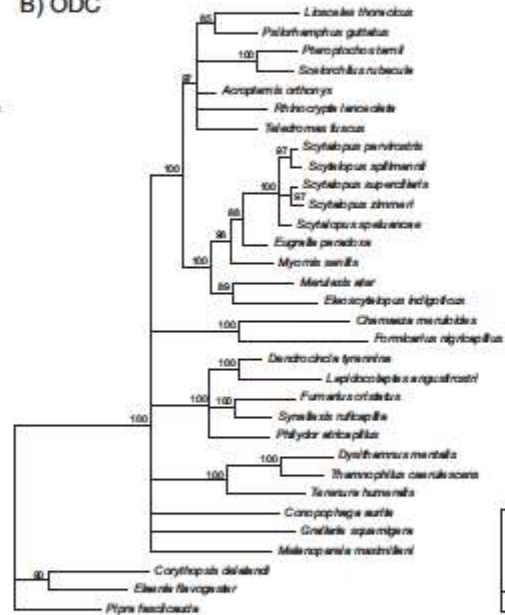


492  
493

A) myoglobin



B) ODC



C) G3PDH



- 494
- 495
- 496
- 497
- 498
- 499
- 500
- 501
- 502
- 503
- 504
- 505

506  
507  
508  
509  
510  
511  
512  
513  
514  
515  
516  
517  
518  
519  
520  
521  
522  
523  
524  
525  
526  
527  
528  
529  
530  
531  
532  
533  
534  
535  
536  
537  
538  
539

Table 1

Species	Family: Subfamily	Voucher / Sample No.	Myoglobin	G3PDH	ODC
<i>Acropternis orthonyx</i>	Rhinocryptidae	ZMUC 125695 *	new	new	new
<i>Merulaxis ater</i>	Rhinocryptidae	ZMUC 128820	new	new	new
<i>Pteroptochos tarnii</i>	Rhinocryptidae	AMNH RTC467 *	AY065774 <sup>A)</sup>	AY590096 <sup>E)</sup>	new
<i>Rhinocrypta lanceolata</i>	Rhinocryptidae	NRM 966793	AY065775 <sup>A)</sup>	DQ438953 <sup>F)</sup>	DQ435499 <sup>F)</sup>
<i>Teledromas fuscus</i>	Rhinocryptidae	USNM BKS3703 *	new	new	new
<i>Psilorhamphus guttatus</i>	Rhinocryptidae	ZMCU? Olson 2005	new	new	new
<i>Myornis senilis</i>	Rhinocryptidae	ZMUC 134967 *	new	new	new
<i>Scytalopus parvirostris</i>	Rhinocryptidae	ZMCU 128441	new	new	new
<i>Scytalopus speluancae</i>	Rhinocryptidae	ZMCU 128818	new	new	new
<i>Scytalopus spillmannii</i>	Rhinocryptidae	ZMUC 125091 *	AY065773 <sup>A)</sup>	AY590097 <sup>E)</sup>	new
<i>Scytalopus zimmeri</i>	Rhinocryptidae	ZMUC 126278 *	new	new	new
<i>Scytalopus superciliaris</i>	Rhinocryptidae	USNM BKS 3592 *	new	new	new
<i>Eugralla paradoxa</i>	Rhinocryptidae	NRM 570026 *, TP	new	new	new
<i>Scelorchilus rubecula</i>	Rhinocryptidae	NRM 570029 *, TP	new	new	new
<i>Liosceles thoracicus</i>	Rhinocryptidae	NRM 570027 *, TP	new	new	new
<i>Eleoscytalopus indigoticus</i>	Rhinocryptidae	NRM 570028 *, TP	new	new	new
<i>Melanopareia maximiliani</i>	Rhinocryptidae	ZMUC 125045 *	AY065785 <sup>A)</sup>	new	new
<i>Furnarius cristatus</i>	Furnariidae: Furnariinae	NRM 966772 *	AY064255 <sup>B)</sup>	AY590066 <sup>E)</sup>	DQ435482 <sup>F)</sup>
<i>Philydor atricapillus</i>	Furnariidae: Furnariinae	NRM 937334 *	AY065758 <sup>A)</sup>	AY590076 <sup>E)</sup>	EF212110 <sup>H)</sup>
<i>Synallaxis ruficapilla</i>	Furnariidae: Furnariinae	NRM 956643 *	AY065763 <sup>A)</sup>	AY590068 <sup>E)</sup>	EF212119 <sup>H)</sup>
<i>Lepidocolaptes angoustirostris</i>	Furnariidae: Dendrocolaptinae	NRM 937184 *	AY065767 <sup>A)</sup>	AY336576 <sup>G)</sup>	DQ435486 <sup>F)</sup>
<i>Dendrocincla tyrannina</i>	Furnariidae: Dendrocolaptinae	ZMUC 125661 *	AY442959 <sup>C)</sup>	AY590087 <sup>E)</sup>	EF212098 <sup>H)</sup>
<i>Chamaeza meruloides</i>	Formicariidae	ZMUC 126604 *	AY065776 <sup>A)</sup>	AY590095 <sup>E)</sup>	new
<i>Formicarius nigricapillus</i>	Formicariidae	ZMUC 125987 *	AY065777 <sup>A)</sup>	new	new
<i>Grallaria squamigera</i>	Grallariidae	ZMUC 124629 *	AY065778 <sup>A)</sup>	AY677078 <sup>C)</sup>	new
<i>Dysithamnus mentalis</i>	Thamnophilidae	NRM 956629 *	AY676995 <sup>C)</sup>	AY677042 <sup>C)</sup>	new
<i>Terenura humeralis</i>	Thamnophilidae	FMNH 389941	AY677004 <sup>C)</sup>	AY677051 <sup>C)</sup>	new
<i>Thamnophilus caerulescens</i>	Thamnophilidae	NRM 967007 *	AY065783 <sup>A)</sup>	AY336587 <sup>G)</sup>	DQ435504 <sup>F)</sup>
<i>Conopophaga aurita</i>	Conopophagidae	ZMUC 125796 *	AY065784 <sup>A)</sup>		DQ435478 <sup>F)</sup>
<i>Conopophaga lineata</i>	Conopophagidae	NRM 956653 *		AY336577 <sup>G)</sup>	
<i>Pipra fasciicauda</i>	Pipridae	NRM 947271 *	AY065787 <sup>A)</sup>	AY336583 <sup>G)</sup>	DQ435495 <sup>F)</sup>
<i>Corythopsis delalandi</i>	Tyrannidae	NRM 937282 *	AY065788 <sup>A)</sup>	DQ435463 <sup>F)</sup>	DQ435479 <sup>F)</sup>
<i>Elaenia flavogaster</i>	Tyrannidae	NRM 966970 *	AY228295 <sup>D)</sup>	new	new

540

541

542

543

544

545

546