



# Chemistry of Methane and Related Hydrocarbons in the atmosphere of Mars

Franck Lefèvre, Eric Hébrard, François Forget

## ► To cite this version:

Franck Lefèvre, Eric Hébrard, François Forget. Chemistry of Methane and Related Hydrocarbons in the atmosphere of Mars. Fourth International Workshop on the Mars Atmosphere: Modelling and Observations, Feb 2011, Paris, France. pp.325. hal-00566456

**HAL Id: hal-00566456**

**<https://hal.science/hal-00566456>**

Submitted on 16 Feb 2011

**HAL** is a multi-disciplinary open access archive for the deposit and dissemination of scientific research documents, whether they are published or not. The documents may come from teaching and research institutions in France or abroad, or from public or private research centers.

L'archive ouverte pluridisciplinaire **HAL**, est destinée au dépôt et à la diffusion de documents scientifiques de niveau recherche, publiés ou non, émanant des établissements d'enseignement et de recherche français ou étrangers, des laboratoires publics ou privés.

# CHEMISTRY OF METHANE AND RELATED HYDROCARBONS IN THE ATMOSPHERE OF MARS.

**F. Lefèvre**, LATMOS, Paris, France ([franck.lefevre@latmos.ipsl.fr](mailto:franck.lefevre@latmos.ipsl.fr)), **E. Hébrard**, Laboratoire d'Astrophysique de Bordeaux, Bordeaux, France, **F. Forget**, Laboratoire de Météorologie Dynamique, Paris, France.

## Objectives:

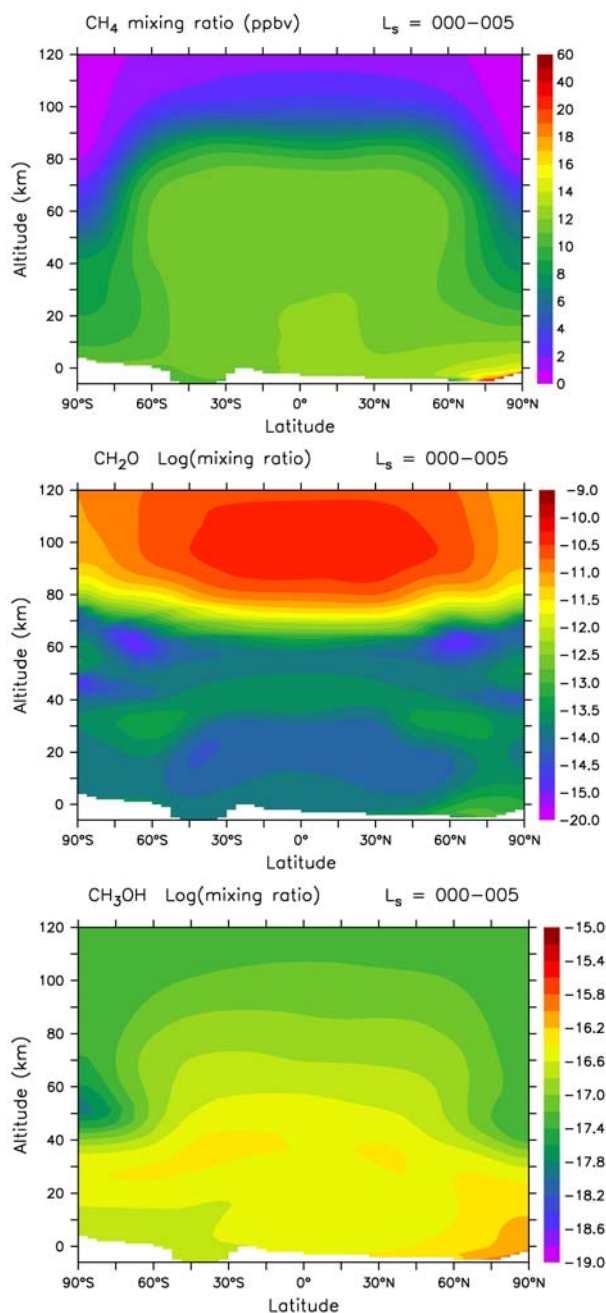
The possible detection of methane on Mars [1,2,3,4] has revived the possibility of past or extant life on this planet, despite the fact that an abiogenic origin is thought to be equally plausible. An intriguing aspect of the recent observations of methane on Mars is that methane concentrations appear to be locally enhanced and change with the seasons [3,4,5]. This contradicts the logic that a gas of lifetime much longer ( $\sim 330$  years) than the time required for global mixing should have a constant and spatially uniform distribution [6]. We will review in this paper our current understanding of the methane photochemistry. Assuming a methane source exists at the surface of Mars, we will present its expected distribution in the atmosphere, and investigate the possible processes that could lead to methane variability. These mechanisms could for instance involve atmospheric chlorine, interactions of methane with the surface, or electrochemical processes. Finally, we will examine the chemistry of the hydrocarbons produced by the degradation chain of methane, such as formaldehyde ( $\text{CH}_2\text{O}$ ), methanol ( $\text{CH}_3\text{OH}$ ), or ethane ( $\text{C}_2\text{H}_6$ ). These species are often cited as measurable markers of a possible Martian hydrocarbon chemistry, and are among the key targets of the next Exomars Trace Gas Orbiter mission. Using three-dimensional simulations, we will determine what quantities of these products can be expected from the amounts of methane currently detected on the planet.

## Method:

We have employed an updated version of the LMD Global Climate Model with interactive photochemistry, extensively described in [7]. Hydrocarbon and chlorine chemistries have recently been implemented in the model, as well as other various improvements that will be detailed in the presentation. This new version of the GCM provides a comprehensive description of the chemistry of  $\text{CO}_2$ ,  $\text{CO}$ , oxygen, hydrogen, hydrocarbons, and chlorine by means of 31 species and 107 chemical or photolytic reactions.

## References:

[1] Krasnopolsky et al., *Icarus* 172, 537 (2004). [2] Formisano et al., *Science* 306, 1758 (2004). [3] Mumma et al., *Science* 323, 1041 (2009). [4] Fonti et al., *Astron. Astrophys* 512, A51 (2010). [5] Geminale et al., *Planet. Space Sci.*, in press. [6] Lefèvre and Forget, *Nature* 460, 720 (2009). [7] Lefèvre et al., *J. Geophys. Res.* 109, (2004).



**Figure 1.** Zonally-averaged distributions of methane (top), formaldehyde (middle), and methanol (bottom) calculated by the GCM for  $L_s = 0-5^\circ$ . The model includes a local source of methane at the surface which maintains an equilibrium value of 10 ppbv.