



**HAL**  
open science

## Hyperfine structure of the $a_1 g - X 3\Sigma g$ – transitions of $^{16}O^{17}O$ , $^{17}O^{18}O$ and $^{17}O_2$ by CRDS at 80 K

Samir Kassi, Olga Leshchishina, I.E. Gordon, S.S. Yu, Alain Campargue

### ► To cite this version:

Samir Kassi, Olga Leshchishina, I.E. Gordon, S.S. Yu, Alain Campargue. Hyperfine structure of the  $a_1 g - X 3\Sigma g$  – transitions of  $^{16}O^{17}O$ ,  $^{17}O^{18}O$  and  $^{17}O_2$  by CRDS at 80 K. *Chemical Physics Letters*, 2011, 502, pp.37-41. 10.1016/j.cplett.2010.12.017 . hal-00563216

**HAL Id: hal-00563216**

**<https://hal.science/hal-00563216>**

Submitted on 4 Feb 2011

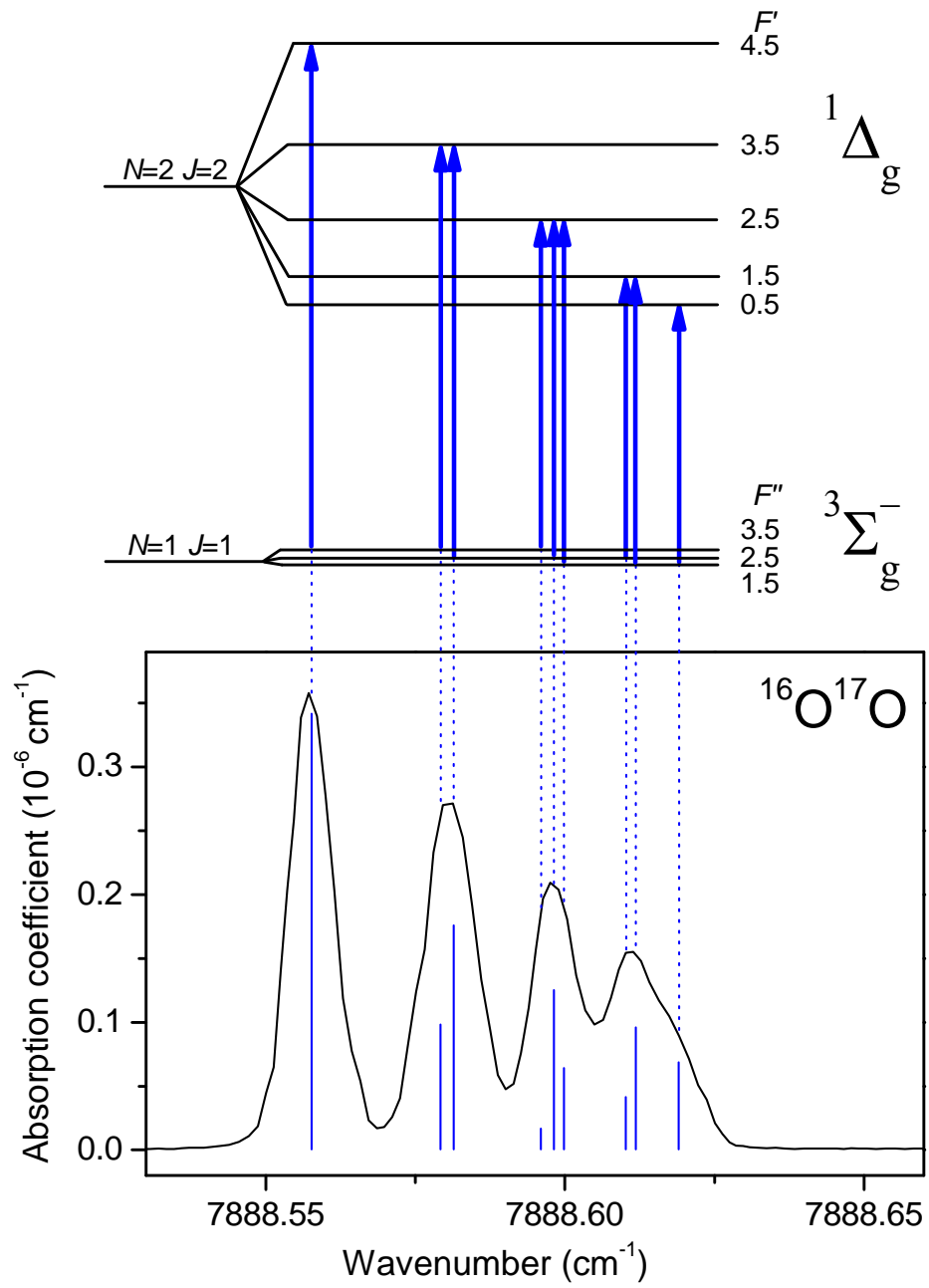
**HAL** is a multi-disciplinary open access archive for the deposit and dissemination of scientific research documents, whether they are published or not. The documents may come from teaching and research institutions in France or abroad, or from public or private research centers.

L'archive ouverte pluridisciplinaire **HAL**, est destinée au dépôt et à la diffusion de documents scientifiques de niveau recherche, publiés ou non, émanant des établissements d'enseignement et de recherche français ou étrangers, des laboratoires publics ou privés.

The CRDS spectrum of the  $a^1\Delta_g-X^3\Sigma_g^-$  band of  $^{16}\text{O}^{17}\text{O}$ ,  $^{17}\text{O}^{18}\text{O}$  and  $^{17}\text{O}_2$  has been recorded at 80 K.

The nuclear hyperfine structure of the transitions could be partly resolved.

The hyperfine parameter coupling in the  $a^1\Delta_g$  state has been derived.



1  
2  
3  
4 Hyperfine structure of the  $a^1\Delta_g - X^3\Sigma_g^-$  transitions of  $^{16}\text{O}^{17}\text{O}$ ,  $^{17}\text{O}^{18}\text{O}$  and  $^{17}\text{O}_2$   
5  
6 by CRDS at 80 K  
7  
8  
9

10 Samir Kassi<sup>a</sup>, Olga Leshchishina<sup>a, b</sup>, Iouli E. Gordon<sup>c</sup>, Shanshan Yu<sup>d</sup>, Alain Campargue<sup>a\*</sup>  
11  
12

13 <sup>a</sup>*Université Joseph Fourier/CNRS, Laboratoire de Spectrométrie Physique,*  
14 *38402 Saint-Martin-d'Hères, FRANCE*

15 <sup>b</sup>*Laboratory of Theoretical Spectroscopy, Zuev Institute of Atmospheric Optics, 1 Akademicheskii*  
16 *av., 634021 Tomsk, RUSSIA*  
17

18 <sup>c</sup>*Harvard-Smithsonian Center for Astrophysics, Atomic and Molecular Physics Division, Cambridge*  
19 *MA 02138, USA*

20 <sup>d</sup>*Jet Propulsion Laboratory, California Institute of Technology, Pasadena, CA 91109-8099, USA*  
21  
22  
23  
24  
25  
26  
27  
28  
29  
30  
31  
32  
33  
34  
35  
36  
37  
38  
39  
40  
41  
42  
43  
44  
45  
46  
47

48 \*Corresponding author: Tel.: +33 4 76 51 43 19; Fax: +33 4 76 63 54 95.  
49

50 *E-mail address:* [Alain.CAMPARGUE@ujf-grenoble.fr](mailto:Alain.CAMPARGUE@ujf-grenoble.fr) (Alain CAMPARGUE).  
51  
52  
53  
54

55 *Keywords:* Oxygen, O<sub>2</sub>, hyperfine structure, Cavity ring down spectroscopy, cryogenic cell  
56  
57  
58  
59  
60  
61  
62  
63  
64  
65

1  
2  
3  
4 **Abstract**  
5  
6  
7

8 The high sensitivity absorption spectrum of the  $a^1\Delta_g-X^3\Sigma_g^-$  band of  $^{16}\text{O}^{17}\text{O}$ ,  $^{17}\text{O}^{18}\text{O}$  and  $^{17}\text{O}_2$   
9 has been recorded by CW-Cavity Ring Down Spectroscopy near 1.27  $\mu\text{m}$ . The spectra were  
10 obtained between 7640 and 7917  $\text{cm}^{-1}$  with a  $^{17}\text{O}$ -enriched sample at room temperature and at 80  
11 K. Due to the  $I=5/2$  nuclear spin of the  $^{17}\text{O}$  atom, the nuclear hyperfine structure of the  
12 transitions could be partly resolved at low temperature. The parameter coupling of the nuclear  
13 spin to the electronic angular momentum in the  $a^1\Delta_g$  state has been derived for the three studied  
14 isotopologues of oxygen.  
15  
16  
17  
18  
19  
20  
21  
22  
23  
24  
25  
26  
27  
28  
29  
30  
31  
32  
33  
34  
35  
36  
37  
38  
39  
40  
41  
42  
43  
44  
45  
46  
47  
48  
49  
50  
51  
52  
53  
54  
55  
56  
57  
58  
59  
60  
61  
62  
63  
64  
65

## 1. Introduction

Recent CRDS experiments carried out at the Grenoble University have allowed significant improvement of our knowledge of the spectral line parameters of the  $a^1\Delta_g - X^3\Sigma_g^-$  band of oxygen. In Ref [1], the electric quadrupole line parameters were found to have sufficient intensities to be detected in the atmospheric spectrum and they were parameterized to complement magnetic dipole transitions provided in HITRAN database [2]. In Ref. [3], the measurements in  $^{16}\text{O}$ - and  $^{18}\text{O}$ - enriched mixtures of oxygen have allowed determination of the best to date spectroscopic constants in the  $a^1\Delta_g$  band for five most abundant isotopologues of oxygen ( $^{16}\text{O}_2$ ,  $^{16}\text{O}^{18}\text{O}$ ,  $^{18}\text{O}_2$ ,  $^{16}\text{O}^{17}\text{O}$  and  $^{17}\text{O}^{18}\text{O}$ ). For the  $^{17}\text{O}$ -containing species significant broadening of rotational lines due to unresolved hyperfine structure was observed [3].

Indeed, unlike other isotopes of oxygen  $^{17}\text{O}$  has a non-zero nuclear spin ( $I= 5/2$ ) and the coupling of the nuclear spin to electron spin in the  $X^3\Sigma_g^-$  state [3] and to the electronic angular momentum in the  $a^1\Delta_g$  state [4] gives rise to a magnetic hyperfine (hf) structure. As a result of the Doppler broadening at room temperature, the magnetic hyperfine structure could not be resolved and it manifested itself only as a broadening of the  $^{16}\text{O}^{17}\text{O}$  and  $^{17}\text{O}^{18}\text{O}$  transitions.

The present study is devoted to a detailed experimental investigation of the hf structure of the  $^{17}\text{O}$  containing isotopologues of oxygen, on the basis of new CRDS spectra of the  $a^1\Delta_g - X^3\Sigma_g^-$  band recorded at room temperature and at liquid nitrogen temperature (about 80 K, see below). By using a  $^{17}\text{O}$ -enriched sample, the  $^{16}\text{O}^{17}\text{O}$ ,  $^{17}\text{O}^{18}\text{O}$  and  $^{17}\text{O}_2$  isotopologues could be simultaneously studied. As illustrated below, the narrowing by a factor of two of the Doppler width at 80 K compared to room temperature was decisive to (partly) resolve and interpret the hf structure.

After the description of the CRDS spectrometer in the next section, the obtained spectra and the analysis of the hf structure will be presented in Section 3. The coupling parameters will be determined and compared to the values available in the literature [4].

## 2. Experimental

### *Room temperature measurements*

The high-sensitivity CW-CRDS absorption spectrum of the  $a^1\Delta_g - X^3\Sigma_g^-$  band was recorded at room temperature (RT) in the  $7658\text{-}7917\text{ cm}^{-1}$  region using a  $^{17}\text{O}$ -enriched sample. The stated

1  
2  
3  
4 atomic composition of the sample (from Sigma Aldrich) was  $^{17}\text{O}$ : 55.8%,  $^{16}\text{O}$ : 43.4% and  $^{18}\text{O}$ :  
5  
6 0.8 %.

7  
8 The fibered distributed feedback (DFB) laser CW-CRDS spectrometer used for the  
9  
10 recordings at room temperature is the same as the one used for the study of the natural and  $^{18}\text{O}$ -  
11  
12 enriched samples [1, 3]. It has been described in details in Refs. [6-8]. Each DFB laser diode has  
13  
14 a typical tuning range of about  $40\text{ cm}^{-1}$  by temperature tuning from  $-10^\circ\text{C}$  to  $60^\circ\text{C}$ . A total of nine  
15  
16 DFB laser diodes were needed to cover the  $7658\text{-}7917\text{ cm}^{-1}$  region. The electro-polished stainless  
17  
18 steel ring down cell ( $l = 1.42\text{ m}$ , inner diameter  $\Phi = 11\text{ mm}$ ) was fitted by a pair of super-mirrors.  
19  
20 The reflectivity of these mirrors (about 99.997 %) corresponds to empty cell ring down times of  
21  
22 about  $\tau \sim 200\ \mu\text{s}$ . About 40 ring down events were averaged for each spectral data point; the  
23  
24 complete temperature scan of one DFB laser (15000 spectral points) required about 70 minutes.  
25  
26 The achieved noise equivalent absorption was about  $\alpha_{\min} \sim 4 \times 10^{-11}\text{ cm}^{-1}$  over the whole spectrum.  
27  
28 The pressure measured by a capacitance gauge (MKS 100 Torr full range with 0.1% accuracy)  
29  
30 and the ring down cell temperature were monitored during the recordings. The pressure value of  
31  
32 the RT spectra was fixed to 30.0 Torr. Additional recordings were performed at 5 Torr in the  
33  
34  $7839\text{-}7917\text{ cm}^{-1}$  region corresponding to the strongest transitions.

#### 35 36 *Measurements at low temperature*

37  
38 The cryogenic cell used for the CW-CRDS recordings at liquid nitrogen temperature (LNT)  
39  
40 has been described in Refs. [9-12]. It was developed and extensively used to characterize the  
41  
42 absorption spectrum of methane at low temperature in the  $1.58$  and  $1.28\ \mu\text{m}$  methane  
43  
44 transparency windows [9-12]. Briefly, it is based on an original design (see Fig. 1 of Ref. [9])  
45  
46 which dispenses with an external vacuum jacket by exploiting the fact that a low pressure gas  
47  
48 sample constitutes itself a good thermal insulation. The cryostat is a  $1.42\text{ m}$  long hollow cylinder  
49  
50 both filled and completely surrounded by the sample gas volume. The liquid nitrogen filling tube  
51  
52 constitutes its single suspension point which, combined with an almost perfect cylindrical  
53  
54 geometry helps to eliminate stress normally present in a double-jacket cell configuration.  
55  
56 Contrary to our previous setup [9], one of the mirrors was prealigned then glued on a piezo  
57  
58 actuator allowing for cavity length modulation. Therefore a standard CW-CRDS data acquisition  
59  
60 could be used with a spectral calibration fully relying on the wavemeter real time measurements.  
61  
62 The distance between the high reflective mirrors and the cryostat ends is about  $0.5\text{ cm}$ . A  
63  
64 sensitivity comparable to that achieved at room temperature ( $\alpha_{\min} \sim 10^{-10}\text{ cm}^{-1}$ ) was obtained.  
65

1  
2  
3  
4 Coinciding temperature values ( $80\pm 2$  K) were obtained from the Doppler profile of methane  
5 absorption lines [9,10] and the rotational intensity distribution of the  $3\nu_2$  band of  $\text{CH}_3\text{D}$  [12]. This  
6 value of  $80\pm 2$  K is what we refer to as “liquid nitrogen temperature” (LNT).  
7  
8

9  
10 The LNT spectrum was recorded in the  $7876\text{--}7893\text{ cm}^{-1}$  region corresponding to the low  
11 rotational transitions which exhibit the most resolved hyperfine structures of the  $^{17}\text{O}$  containing  
12 isotopologues. The pressure value was fixed to 1.5 Torr.  
13  
14

15 Fig. 1 shows the different line profiles obtained for the R1R1 transitions of the  $^{16}\text{O}_2$ ,  $^{16}\text{O}^{17}\text{O}$   
16 and  $^{17}\text{O}_2$  isotopologues (Note that we use  $\Delta N N'' \Delta J J''$  notation where  $N$  and  $J$  are the quantum  
17 numbers relative to the rotational angular momentum and total angular momentum, respectively).  
18 While the  $^{16}\text{O}_2$  line appears as single line with a Doppler limited profile, the  $^{16}\text{O}^{17}\text{O}$  and  $^{17}\text{O}_2$   
19 lines are split in different hf components. The comparison between the 296 K and 80 K spectra  
20 (Fig.1) illustrates the much better resolution of the hf structure at 80 K due to the reduction by a  
21 factor of two of the Doppler broadening (HWHM of  $0.008$  and  $0.004\text{ cm}^{-1}$  at 296 K and 80 K,  
22 respectively).  
23  
24  
25  
26  
27  
28  
29

### 30 *Spectrum calibration*

31  
32 Each  $40\text{ cm}^{-1}$  wide spectrum recorded with one DFB laser was calibrated independently on  
33 the basis of the wavelength values provided by a Michelson-type wavemeter (Bristol 621A, 60  
34 MHz resolution and 100 MHz accuracy). The calibration was further refined by stretching the  
35 whole spectrum in order to match accurate positions of the transitions of the  $a^1\Delta_g - X^3\Sigma_g^-$  band of  
36  $^{16}\text{O}_2$  provided in the recent HITRAN update [2]. The uncertainty in the absolute values of the  
37 line positions is estimated to be  $1\times 10^{-3}\text{ cm}^{-1}$ . It results from an equivalent contribution of the  
38 uncertainties in the HITRAN values and in the values measured in the present study.  
39  
40  
41  
42  
43  
44  
45

### 46 **3. Results**

47 Transitions due to the  $^{17}\text{O}_2$ ,  $^{16}\text{O}^{17}\text{O}$ ,  $^{16}\text{O}_2$ ,  $^{17}\text{O}^{18}\text{O}$  and  $^{16}\text{O}^{18}\text{O}$  isotopologues were found to  
48 contribute to the spectrum. The most abundant species are  $^{17}\text{O}_2$ ,  $^{16}\text{O}^{17}\text{O}$  and  $^{16}\text{O}_2$  with relative  
49 concentration on the order of 0.33, 0.47 and 0.18, respectively. Overall, more than one thousand  
50 transitions were measured in the RT spectrum. The global rovibrational analysis including the  
51 complete line list, description of the assignment procedure and derivation of the spectroscopic  
52 parameters from a global fit will be published in a separate contribution. In the present Letter, we  
53 limit the discussion to the hf structure of the  $^{17}\text{O}_2$ ,  $^{16}\text{O}^{17}\text{O}$  and  $^{17}\text{O}^{18}\text{O}$  species.  
54  
55  
56  
57  
58  
59  
60  
61  
62  
63  
64  
65



1  
2  
3  
4 While  $^{16}\text{O}$  and  $^{18}\text{O}$  nuclei have a  $I=0$  nuclear spin,  $^{17}\text{O}$  has a  $I=5/2$  spin leading to the  
5  
6 existence of an hyperfine structure in the  $^{17}\text{O}$  containing species. The hf structure affecting the  $X$   
7  
8  $^3\Sigma_g^-$  ground state of  $^{17}\text{O}_2$ ,  $^{16}\text{O}^{17}\text{O}$  and  $^{17}\text{O}^{18}\text{O}$  was previously reported from microwave and  
9  
10 millimeter spectroscopy measurements [5, 13-16]. The observation of the ground state hyperfine  
11  
12 structure by absorption spectroscopy in the near infrared or visible is particularly difficult as the  
13  
14 Doppler width is significantly larger than the hf splitting. Very recently, Long et al. [14] could  
15  
16 measure the ground hyperfine structure from an excess of the broadening of some transitions of  
17  
18 the  $b^1\Sigma_g^+ - X^3\Sigma_g^-$  band near 760 nm. The sub Doppler hyperfine structure could be evidenced  
19  
20 from a detailed study of the line profile recorded by Frequency-stabilized CRDS [14]. It is  
21  
22 important to note that the evidenced extra broadening of the  $b^1\Sigma_g^+ - X^3\Sigma_g^-$  band transitions is due  
23  
24 to the ground state hf structure as the  $b^1\Sigma_g^+$  upper electronic state is a singlet  $\Sigma$  state with  
25  
26 negligible hf structure. In the present study devoted to the  $a^1\Delta_g - X^3\Sigma_g^-$  band, the situation is  
27  
28 different because the nuclear spin can couple to the electronic angular momentum of the  $a^1\Delta_g$   
29  
30 upper state. Our spectra (Fig. 1 for instance) show that the observed hf splitting is significantly  
31  
32 larger than the Doppler broadening and then that the hf structure of the  $a^1\Delta_g$  upper state is larger  
33  
34 than that of the ground state. This is consistent with earlier results of electron paramagnetic  
35  
36 resonance (EPR) measurements of  $^{16}\text{O}^{17}\text{O}$  and  $^{17}\text{O}^{18}\text{O}$  species in the  $a^1\Delta_g$  state [4].

37 The general expression of the hyperfine structure Hamiltonian can be written as

$$38$$

$$39 \mathbf{H}_{hf} = a \mathbf{I}_z \mathbf{L}_z + b_F \mathbf{I} \cdot \mathbf{S} + c (\mathbf{I}_z \mathbf{S}_z - \frac{1}{3} \mathbf{I} \cdot \mathbf{S}) + \frac{eqQ (3I_z^2 - I^2)}{4I(2I-1)}, \quad (1)$$

40  
41  
42 where the first term describes the interaction of the electronic orbital moment with the  
43  
44 nuclear spin, the second and third terms represent the isotropic (Fermi contact interaction) and  
45  
46 anisotropic parts of the electron spin-nuclear spin coupling, respectively. The fourth term  
47  
48 represents the electric quadrupole interaction due to asymmetric charge distribution around the  
49  
50 nucleus.

51 In the  $X^3\Sigma_g^-$  ground state,  $A=0$  and therefore the first term vanishes. The two other  
52  
53 magnetic terms lead to an hf splitting of each  $(N, J)$  rotational level in different components:

$$54$$

$$55 W(F_1) = \frac{\mathbf{J}}{(N+1)} \left\{ b_F + c \frac{2N}{(2N+3)} \right\}$$

$$56$$

$$57$$

$$58 W(F_2) = \frac{\mathbf{J}}{N(N+1)} \left( b_F + \frac{2}{3} c \right)$$

$$59$$

$$60$$

$$61$$

$$62$$

$$63$$

$$64$$

$$65$$

$$W(F_3) = \frac{\mathbf{I}\mathbf{J}}{N} \left\{ -b_F + c \left( \frac{2N+2}{2N-1} \right) \right\}, \quad (2)$$

where  $\mathbf{I}\mathbf{J} = 1/2[F(F+1) - I(I+1) - J(J+1)]$  with  $F = J+I, J+I-1, \dots, |J-I|$  and  $F_1, F_2$  and  $F_3$ : corresponds to  $J=N+1, J=N$  and  $J=N-1$ , respectively. Note that Eq. 2 ignores small contribution due to quadrupole coupling.

In the case of the  $^{16}\text{O}^{17}\text{O}$  and  $^{17}\text{O}^{18}\text{O}$  species,  $I = 5/2$  and then  $F = J \pm 5/2, J \pm 3/2$  and  $J \pm 1/2$ . The rotational levels are then split into six components for  $J > 2$ .

In the case of the  $^{17}\text{O}_2$  isotopologue, the vectorial addition of the two nuclear spins ( $I_1 = I_2 = 5/2$ ) leads to six values of the total nuclear spin  $I_{tot} = I_1 + I_2, \dots, |I_1 - I_2| = 5, 4, 3, 2, 1, 0$ . In the  $X^3\Sigma_g^-$  ground state because of the nuclear spin function symmetry, the even and odd values of  $N''$  can only be associated with odd and even values of  $I_{tot}$ , respectively [13]. Thus each  $J''$  level is split into  $F = J + I_{tot}, J + I_{tot} - 1, \dots, |J - I_{tot}|$  components with  $I_{tot} = 5, 3, 1$  for even  $N''$  values and with  $I_{tot} = 4, 2, 0$  for odd  $N''$  values. For instance, for  $N = 1$  the number of components is seven, while for  $N = 2$  the level splits into 13 components.

The  $a^1\Delta_g$  upper state is a singlet state ( $S = 0$ ), so that only the first and fourth interaction terms remain in Eq. 1. This  $a^1\Delta_g$  state obeys the Hund's electronic case (a) coupling and the dominant magnetic part of the hyperfine operator simplifies to yield the hyperfine energy [17]:

$$W = a A \Omega \mathbf{I}\mathbf{J} / J(J+1). \quad (3)$$

with  $\Omega = A + \Sigma$ , which in this case is equal to  $A = 2$ . From this expression, it is obvious that the hyperfine component separations decrease with increasing  $J$  values i.e. that, in the different branches, transitions from the first rotational levels are expected to show the most resolved hf structure. As an example, Figs. 2 and 3 illustrate the evolution of the hf structure with an increasing rotational excitation for  $^{16}\text{O}^{17}\text{O}$  and  $^{17}\text{O}_2$ , respectively: the hf structure is partly resolved for the first  $N, J$  rotational levels but shows up as a small extra broadening for  $N, J$  values larger than 10. It is worth mentioning that  $A$ -doubling could not be resolved in this experiment.

The selection rules for  $^{16}\text{O}^{17}\text{O}$ ,  $^{17}\text{O}^{18}\text{O}$  and  $^{17}\text{O}_2$  magnetic dipole transitions are  $\Delta J = 0, \pm 1$  and  $\Delta F = 0, \pm 1$ . For the high  $J$  values, only the hyperfine transitions with  $\Delta J = \Delta F$  are significant and the intensity of these transitions are proportional to  $(2F+1)$  [18]. Fig. 4 shows the energy diagram and allowed transitions of the R1R1 line together with the corresponding experimental

1  
2  
3  
4 spectra of  $^{16}\text{O}^{17}\text{O}$  and  $^{17}\text{O}^{18}\text{O}$ . The hf coupling terms being identical for these two species, the  
5  
6 observed hf structures are very similar.

7  
8 The values of the hf coupling parameters were determined from a global fit of all the  
9  
10 transitions measured in this work together with the microwave (MW) lines from Cazzoli et al. [5,  
11  
12 13] by using the SPFIT software [19]. The expression of the rotational part of the Hamiltonians  
13  
14 in the ground and excited electronic states is given in Ref. [3] (Eqs. 1 and 2). A detailed  
15  
16 description of the fit including the weighting of the wavenumbers values of the hf components,  
17  
18 the combination of RT and LNT datasets, the constraints of the fits of the spectroscopic  
19  
20 parameters and comparisons with previously reported values will be detailed in a separate  
21  
22 contribution [20]. In this Letter, we focus on the obtained hf coupling constants which are listed  
23  
24 in Table 1 for both the ground and  $a^1\Delta_g$  upper states. Note that we have tried to fit the  
25  
26 quadrupole coupling constant of the  $a^1\Delta_g$  (last term of Eq. 1) but it could not be well determined.  
27  
28 The corresponding constant in the ground state of  $^{16}\text{O}^{17}\text{O}$  and  $^{17}\text{O}^{18}\text{O}$  is about -8 MHz and  
29  
30 according to the calculations of Minaev and Minaeva [21] it should be similar in the excited state  
31  
32 and then too small to be determined from our spectra.

33  
34 To the best of our knowledge, the only previous determination of the hf coupling constant  
35  
36 in the  $a^1\Delta$  state is due to Arrington et al. [4] who obtained the  $a$  value of  $^{16}\text{O}^{17}\text{O}$  and  $^{17}\text{O}^{18}\text{O}$  from  
37  
38 a fit of EPR spectra [4]. Since in theory there is no isotopic dependence for this parameter, they  
39  
40 performed a global fit for the two species and determined the coupling constant to be  $-424\pm 1$   
41  
42 MHz which is almost exactly a factor of two greater than our values ( $-215.6\pm 2.3$  and  $-212.4\pm 3.5$   
43  
44 MHz, for  $^{16}\text{O}^{17}\text{O}$  and  $^{17}\text{O}^{18}\text{O}$ , respectively). This difference is merely due to the different  
45  
46 definition of the coupling constant adopted by Arrington et al. [4], the value of  $A$  ( $A=2$  in this  
47  
48 case) being absorbed into the constant. The hf coupling parameter of  $^{17}\text{O}_2$  could be also  
49  
50 determined from the analysis of our LNT spectrum. As expected, the obtained value is very close  
51  
52 to that of the  $^{16}\text{O}^{17}\text{O}$  and  $^{17}\text{O}^{18}\text{O}$  isotopologues.

53  
54 We have superimposed to the spectra of Figs. 2 and 3 a simulation of the hf structure  
55  
56 calculated with the fitted parameters values. The simulated spectra were obtained by affecting a  
57  
58 Doppler limited line profile (at 80 K) to the stick spectrum provided by the SPFIT program. It  
59  
60 leads to a very convincing agreement between the measured and calculated spectra.  
61  
62  
63  
64  
65

#### 4. Conclusion

The combination of the high sensitivity CRDS technique with a cryogenic cell at 80 K has allowed for the first observation of the partly resolved hyperfine structure of the  $a^1\Delta_g$ - $X^3\Sigma_g^-$  band of the three  $^{17}\text{O}$  containing isotopologues of oxygen -  $^{16}\text{O}^{17}\text{O}$ ,  $^{17}\text{O}^{18}\text{O}$  and  $^{17}\text{O}_2$ . The observed structure results from the hf splittings of both the  $X^3\Sigma_g^-$  ground state and the  $a^1\Delta_g$  upper state which have a different origin: the hf splitting of the  $X^3\Sigma_g^-$  levels is due to the coupling of the  $^{17}\text{O}$  nuclear spin to the electronic spin while that of the  $a^1\Delta_g$  upper states is larger and results from the coupling of the  $^{17}\text{O}$  nuclear spin to the electronic orbital angular momentum. The hf coupling parameters in the excited state have been determined from a global fit of the line positions. The simulation of the hf structure calculated using these parameters leads to a very satisfactory reproduction of the measured hf structure.

#### Acknowledgments

Part of this work was performed at Grenoble University under the ANR project “IDEO” (NT09\_436466). A portion of this research was performed at Jet Propulsion Laboratory, California Institute of Technology, under contract with the National Aeronautics and Space Administration.

## References

- [1] I.E. Gordon, S. Kassı, A. Campargue, G. C. Toon J. Quant. Spectrosc. Radiat. Transfer 111 (2010) 1174.
- [2] L.S. Rothman, I.E. Gordon, A. Barbe, D.C. Benner, P.F. Bernath, M. Birk et al., J. Quant. Spectrosc. Radiat. Transfer 110 (2009) 533.
- [3] O. Leshchishina, S.Kassı, I.E. Gordon, L. S. Rothman, L. Wang, A. Campargue, J. Quant. Spectrosc. Radiat. Transfer 111 (2010) 2236.
- [4] C. A. Arrington, A. M. Falick, R. J. Myers, J. Chem. Phys. **55**, (1971) 909.
- [5] G. Cazzoli, C D. Esposti, PG Favero, G Severi., Nuovo Cimento B 62 (1981) 243.
- [6] P. Macko, D. Romanini, S.N. Mikhailenko, O.V. Naumenko, S. Kassı, A. Jenouvrier, et al., J. Mol. Spectrosc. 227 (2004) 90.
- [7] J. Morville, D. Romanini, A.A. Kachanov, M. Chenevier, Appl. Phys. B 78 (2004) 465.
- [8] B.V. Perevalov, S. Kassı, D. Romanini, V.I. Perevalov, S.A. Tashkun, A. Campargue, J. Mol. Spectrosc. 238 (2006) 241.
- [9] S. Kassı, B. Gao, D. Romanini, A. Campargue, Phys. Chem. Chem. Phys. 10 (2008) 4410.
- [10] S. Kassı, D. Romanini, A. Campargue, Chem. Phys. Lett. 477 (2009) 17.
- [11] L. Wang, S. Kassı, A. Liu, S. Hu, A. Campargue, J. Quant. Spectrosc. Radiat. Transfer submitted
- [12] L. Wang, S. Kassı, A. Liu, S. Hu, A.Campargue, J. Mol. Spectrosc. 261 (2010) 41.
- [13] G Cazzoli, C D. Esposti, B. M. Landsberg, Nuovo Cimento D 3 (1984) 341.
- [14] D. A. Long, D. K. Havey, M. Okumura, C. E. Miller, J. T. Hodges, Phys. Rev. 81 (2010) 064502.
- [15] S. L. Miller and C. H. Townes, Phys. Rev. 90 (1953) 537.
- [16] P. Gerber, Helv. Phys. Acta 45 (1972) 655.
- [17] R.A. Frosch, H.M. Foley, Phys. Rev. 88 (1952) 1337.
- [18] C. H. Townes and A. K. Schawlow, *Microwave Spectroscopy* (Dover, New York, 1975).
- [19] Pickett HM, J Mol. Spectrosc. 148 (1991) 371.
- [20] O. Leshchishina, S. Kassı, I.E. Gordon, S. Yu, A. Campargue J. Quant. Spectrosc. Radiat. Transfer, submitted
- [21] B. F. Minaev, V.A. Minaeva, Phys. Chem. Chem. Phys. 3 (2001) 720.

1  
2  
3  
4 **Table 1.**  
5

6 The hf coupling parameters of the  $X^3\Sigma_g^-$  and  $a^1\Delta_g$  states of  $^{16}\text{O}^{17}\text{O}$ ,  $^{17}\text{O}^{18}\text{O}$  and  $^{17}\text{O}_2$ .  
7  
8

9  
10  
11  
12  
13  
14  
15  
16  
17  
18  
19  
20

	Parameter (MHz)	$^{16}\text{O}^{17}\text{O}$	$^{17}\text{O}^{18}\text{O}$	$^{17}\text{O}_2$
$a^1\Delta_g$	$a$ (This work)	-217.33(195)	-211.50(261)	-211.93(126)
	$a$ [4]	-424(1) <sup>a</sup>	-424(1) <sup>a</sup>	
$^3\Sigma_g^-$	$b_F$	-54.7444(92)	-54.745(21)	-54.758(23)
	$c$	140.079(24)	140.090(59)	140.0378(62)
	$eQq$	-8.13(24)	-8.23(47)	-8.307(40)

21 a) In Ref [4], there is a factor of 2 in the  $a$  parameter due to a different definition.  
22  
23  
24  
25  
26  
27  
28  
29  
30  
31  
32  
33  
34  
35  
36  
37  
38  
39  
40  
41  
42  
43  
44  
45  
46  
47  
48  
49  
50  
51  
52  
53  
54  
55  
56  
57  
58  
59  
60  
61  
62  
63  
64  
65

## Figure Captions

### Fig.1

The R1R1 transition of  $^{16}\text{O}_2$ ,  $^{16}\text{O}^{17}\text{O}$  and  $^{17}\text{O}_2$  at 296 K and 80 K. Spectra recorded at the room ( $P= 5.0$  Torr) and liquid nitrogen temperature ( $P=1.5$  Torr) are shown on the upper and lower panel, respectively.

### Fig. 2

The hyperfine structure of different  $^{16}\text{O}^{17}\text{O}$  transitions ( $T=80$  K,  $P=1.5$  Torr). The wavenumber values ( $\nu_0$ ) corresponding to the centre of the spectral range of each panel are the following: R1R1 - 7888.5906, R2R2 - 7891.2606, R1Q2 - 7890.4704, Q6Q6 - 7882.3106 and Q13Q13 - 7879.6066  $\text{cm}^{-1}$ .

The black solid line corresponds to the experimental spectrum while the red dash line is a simulation based on the calculated stick spectrum (in blue).

### Fig. 3

The hyperfine structure of different  $^{17}\text{O}_2$  transitions ( $T=80$  K,  $P=1.5$  Torr). The wavenumber values ( $\nu_0$ ) corresponding to the centre of the spectral range for each panel are the following: R1R1 - 7889.1152, R2R2 7891.7151, Q8R7 - 7884.4304 and Q13Q13 - 7880.4153  $\text{cm}^{-1}$ . On the two upper panels the features at the left hand side are  $^{16}\text{O}^{18}\text{O}$  transitions.

The black solid line corresponds to the experimental spectrum while the red dash line is a simulation based on the calculated stick spectrum (in blue).

### Fig. 4

Energy diagram and spectrum of the hyperfine structure of the R1R1 transition of  $^{16}\text{O}^{17}\text{O}$  and  $^{17}\text{O}^{18}\text{O}$  in the spectrum recorded at 80 K. Note that the  $\Lambda$ -doubling is unresolved in the present experiment. The stick spectrum corresponds to the calculated hf structure.

Figure 1

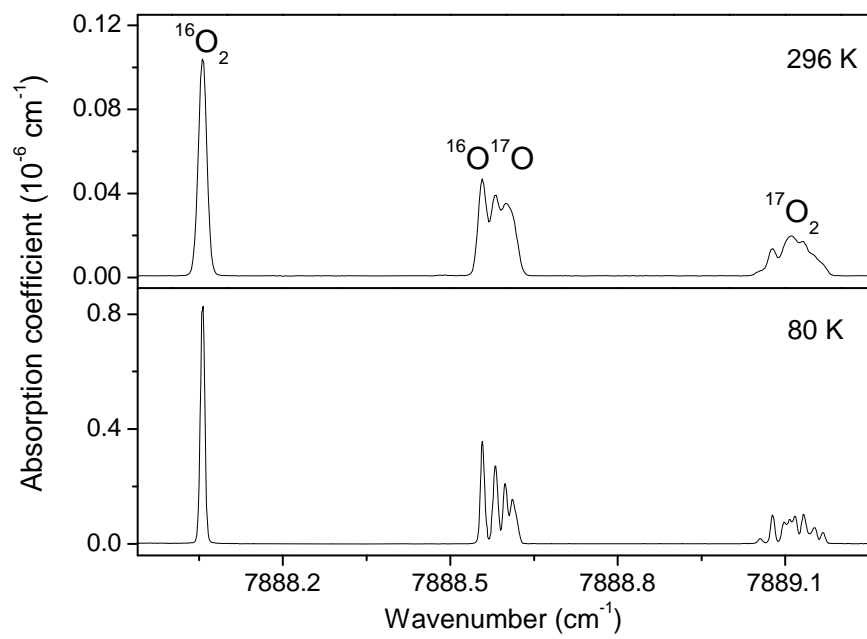




Figure 2

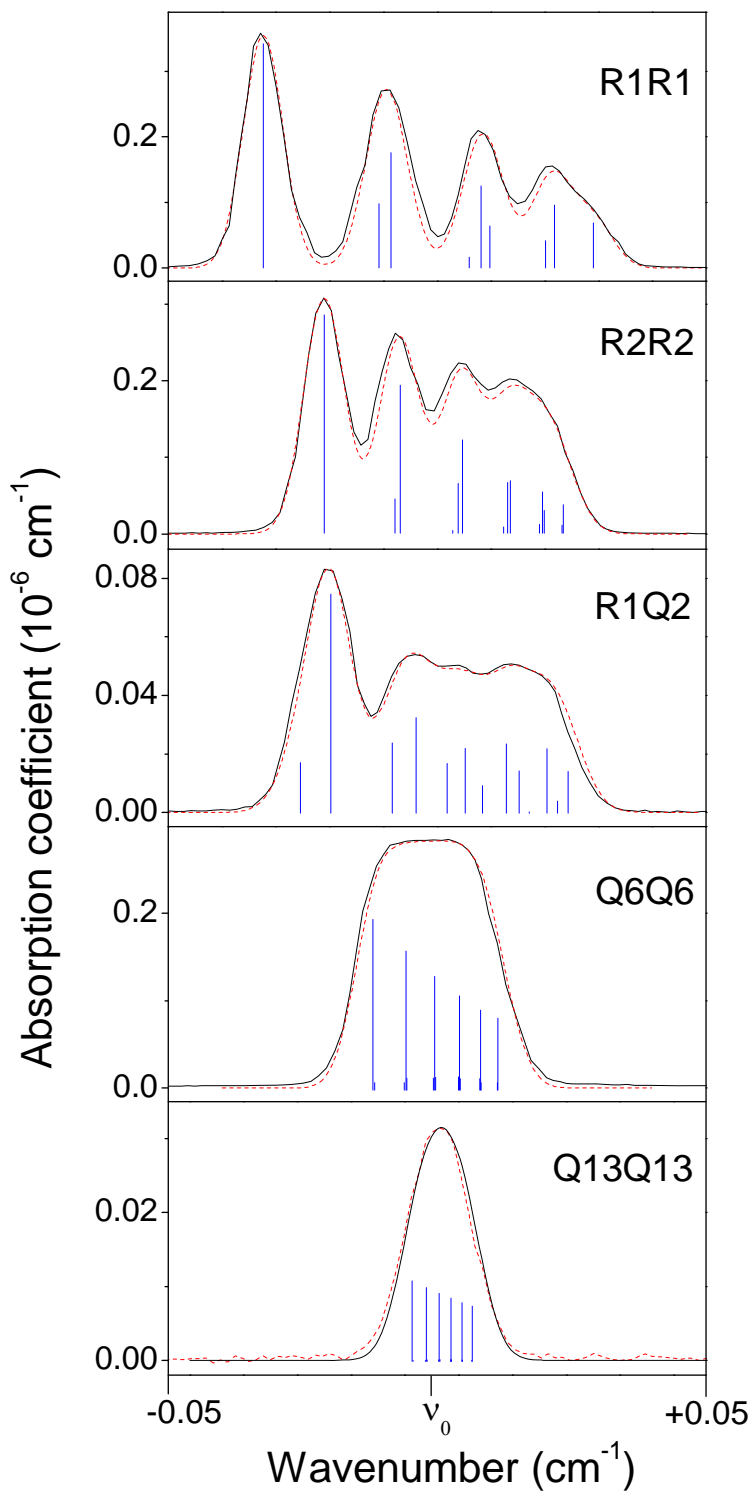


Figure 3

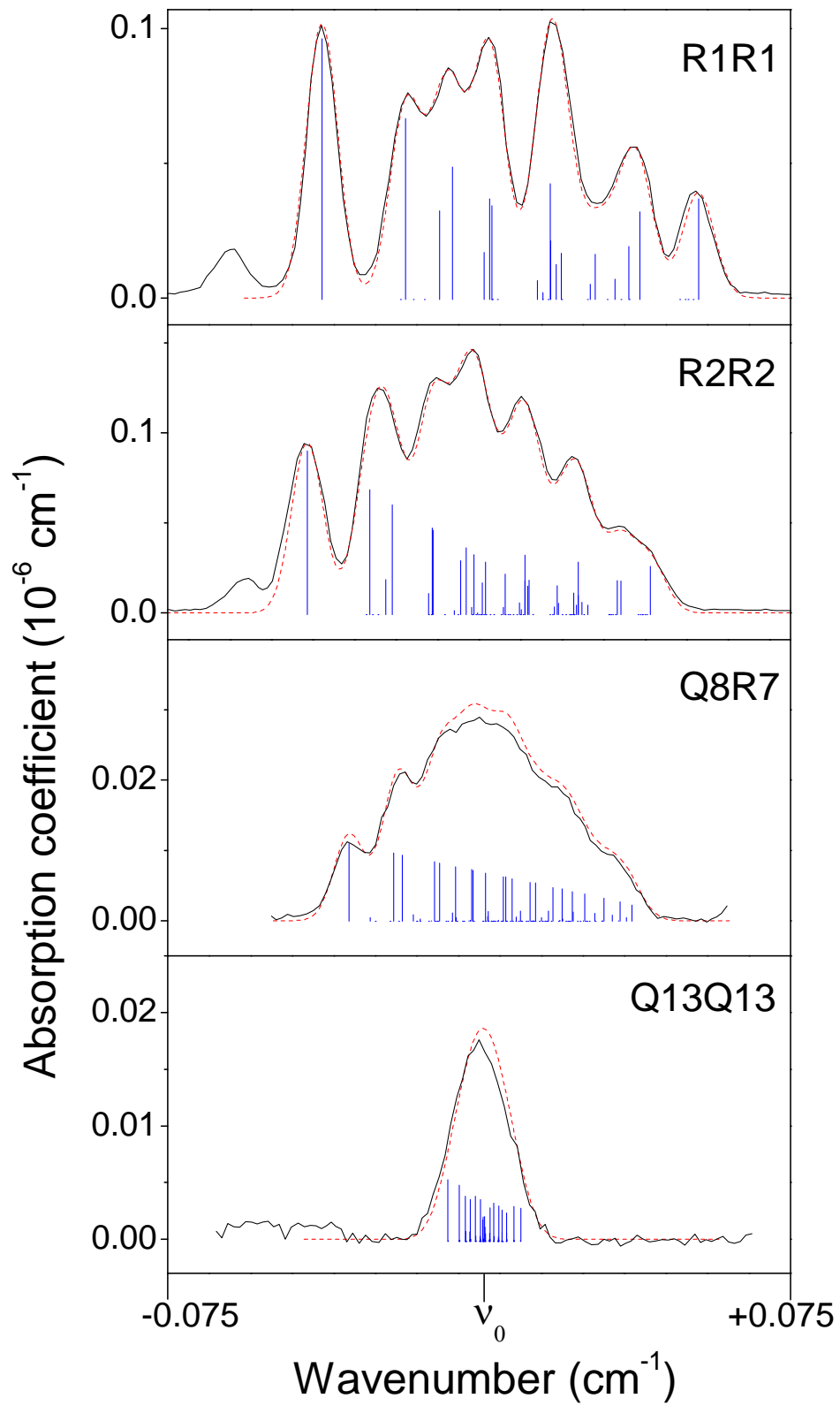


Figure 4

