



HAL
open science

Selective coral mortality associated with outbreaks of *L.* in Bootless Bay, Papua New Guinea

M.S. Pratchett, T.J. Schenk, M. Baine, C. Syms, A.H. Baird

► **To cite this version:**

M.S. Pratchett, T.J. Schenk, M. Baine, C. Syms, A.H. Baird. Selective coral mortality associated with outbreaks of *L.* in Bootless Bay, Papua New Guinea. *Marine Environmental Research*, 2009, 67 (4-5), pp.230. 10.1016/j.marenvres.2009.03.001 . hal-00563072

HAL Id: hal-00563072

<https://hal.science/hal-00563072>

Submitted on 4 Feb 2011

HAL is a multi-disciplinary open access archive for the deposit and dissemination of scientific research documents, whether they are published or not. The documents may come from teaching and research institutions in France or abroad, or from public or private research centers.

L'archive ouverte pluridisciplinaire **HAL**, est destinée au dépôt et à la diffusion de documents scientifiques de niveau recherche, publiés ou non, émanant des établissements d'enseignement et de recherche français ou étrangers, des laboratoires publics ou privés.

Accepted Manuscript

Selective coral mortality associated with outbreaks of *Acanthaster planci* L. in Bootless Bay, Papua New Guinea

M.S. Pratchett, T.J. Schenk, M. Baine, C. Syms, A.H. Baird

PII: S0141-1136(09)00027-0
DOI: [10.1016/j.marenvres.2009.03.001](https://doi.org/10.1016/j.marenvres.2009.03.001)
Reference: MERE 3320

To appear in: *Marine Environmental Research*

Received Date: 25 February 2008
Revised Date: 27 January 2009
Accepted Date: 1 March 2009

Please cite this article as: Pratchett, M.S., Schenk, T.J., Baine, M., Syms, C., Baird, A.H., Selective coral mortality associated with outbreaks of *Acanthaster planci* L. in Bootless Bay, Papua New Guinea, *Marine Environmental Research* (2009), doi: [10.1016/j.marenvres.2009.03.001](https://doi.org/10.1016/j.marenvres.2009.03.001)

This is a PDF file of an unedited manuscript that has been accepted for publication. As a service to our customers we are providing this early version of the manuscript. The manuscript will undergo copyediting, typesetting, and review of the resulting proof before it is published in its final form. Please note that during the production process errors may be discovered which could affect the content, and all legal disclaimers that apply to the journal pertain.



Selective coral mortality associated with outbreaks of *Acanthaster planci* L. in Bootless Bay, Papua New Guinea

M.S. Pratchett^{a,*1}, T.J. Schenk^{a,b,c}, M. Baine^d, C. Syms^b, A.H. Baird^a

^aARC Centre of Excellence for Coral Reef Studies, and

^bSchool of Marine and Tropical Biology

James Cook University of North Queensland, Townsville, QLD 4811, Australia.

^cWA Fisheries and Marine Research Laboratories,

PO Box 20, North Beach, WA 6920, Australia.

^dMotupore Island Research Centre,

School of Natural and Physical Sciences, University of Papua New Guinea,

P.O. Box 320, University 134, National Capital District, Papua New Guinea.

*Corresponding author.

E-mail address: morgan.pratchett@jcu.edu.au

ABSTRACT

Population outbreaks of crown-of-thorns sea star (*Acanthaster planci* L.) remain one of the most significant biological disturbances on tropical coral reefs although the increasing attention given to other threats has greatly limited recent progress in understanding the cause and consequences of these phenomenon . In September 2005 dramatic increases in the abundance of *A. planci* were observed on reefs within Bootless Bay, Central Province, Papua New Guinea, where few crown-of-thorns have previously been reported. Densities of *A. planci* peaked at 162 sea stars per hectare and caused extensive coral mortality. This outbreak killed upwards of 55% of live corals, reducing overall coral cover from 42.4% in 2005 down to just 19.1% in March 2006. Declines in coral cover were largely driven by widespread mortality of *Acropora* spp. which dominated reef assemblages prior to the outbreak. The extensive depletion of *Acropora* spp. greatly altered the coral composition as well as the physical structure of reef habitats. In the absence of any other major disturbances these coral communities are likely to quickly recover, but this outbreak highlights the ongoing contribution of *A. planci* to degradation of coral reef environments.

Keywords: Coral reefs, Crown-of-thorns, Disturbance, Effects-Population, Predation, Scleractinian corals.

1. Introduction

Environmental disturbances have a significant influence on the structure and dynamics of coral reef communities, which appear particularly susceptible to a wide range of disturbances (Hughes & Connell, 1999; Baird et al., 2005; Wilson et al., 2006; Bruno & Selig, 2007). Among the most studied and one of the most significant disturbances on tropical coral reefs, are outbreaks of the coral-eating crown-of-thorns sea star, *Acanthaster planci* Linnaeus 1758 (see reviews by Pearson, 1981; Moran, 1986; Birkeland & Lucas, 1990). In reviewing recovery of coral communities from disturbance, Pearson (1981) suggested that disturbances caused by *A. planci* were more extensive and widespread than that caused by any other natural or anthropogenic disturbances. However, emerging threats associated with climate change, such as coral disease (Bruno et al., 2007) and bleaching (Hughes et al., 2003) are rapidly becoming the major focus of coral scientists throughout the world (Knowlton, 2001).

Climate-induced coral bleaching is now the single greatest concern for coral reef managers globally (Marshall & Schuttenberg, 2006) although many equatorial reefs, particularly those located in the centre of reef biodiversity (e.g., Indonesia, Papua New Guinea, and the Philippines), have as yet, been largely unaffected by climate-induced coral bleaching (Wilkinson, 2004). Rather, there are significant natural and direct anthropogenic disturbances that pose a greater threat to biodiversity and ecosystem function within these regions (Baird et al., 2005). For example, outbreaks of *A. planci* continue to occur throughout the Indo-Pacific region (e.g. Lourey et al., 2000; Sweatman et al., 2004; Pratchett, 2005; Baine, 2006), causing significant coral mortality and adding to the world-wide degradation of coral reef environments (Goldberg & Wilkinson, 2004). Outbreaks of *A. planci* remain the principal cause of long-term coral

loss at many locations in the Pacific, including Palau, Guam and Fiji (Bruno and Selig, 2007).

The Indo-Pacific Archipelago represents a diversity hotspot for marine communities and species (Allen, 2007). These regions include many species with life history traits such as limited ranges or habitat specialisation which make them vulnerable to extinction (Jones et al., 2004; Munday, 2004). Coral loss caused by outbreaks of *A. planci* may represent a significant threat to coral reef biodiversity, but few countries have monitoring programs to quantify the abundance of sea stars and the damage caused. Outbreaks remain very poorly understood phenomena and the issue of whether or not outbreaks have an anthropogenic origin remains unresolved. Pratchett (2005) showed that outbreaks of *A. planci* may arise through the gradual accumulation of successive cohorts of seastars, in which case proximal causes may be very subtle and difficult to detect. If outbreaks of *A. planci* are anthropogenically-induced (e.g., Brodie et al. 2005), then there is an increased incentive to try and manage effects of outbreaks on coral reef ecosystems. Moreover, the threat of climate impacts provides renewed incentives to manage and mitigate against all other sources of coral mortality, because minimising coral loss is critical to maximising their adaptive potential and resilience to future unknown disturbances (Marshall & Schuttenberg, 2006). For these reasons, a much greater effort is required to document and understand population dynamics and effects of *A. planci* on coral and the associated reef fauna, especially within the Indo-Pacific Archipelago.

Acanthaster planci is a natural inhabitant on coral reefs throughout the Indian and Pacific Oceans and mostly occurs at very low densities (typically < 1/hectare) (Birkeland & Lucas, 1990). However, outbreak densities of *A. planci* (up to 20,000/hectare) have been reported throughout much of their geographic range

including Panama (Glynn, 1974, 1976), Micronesia (Chesher, 1969; Colgan, 1987), southern Japan (Keesing, 1992), the Great Barrier Reef (e.g., Moran et al., 1988; Reichelt et al., 1990), Cocos-Keeling Islands (Colin, 1977) and the Red Sea (Ormond & Campbell, 1974). Incidences of outbreaks are most concentrated in the western Pacific (Moran, 1986), and until very recently, there have been few reports of outbreaks in Papua New Guinea (PNG) or Indonesia (Quinn and Kojis, 1987; Lane, 1996; Tomascik et al., 1997). Prior to 2005, there is only a single published paper on high densities of *A. planci* in PNG (Pyne, 1970), but since then outbreaks have been reported from Bootless Bay and Milne Bay, in southern PNG (Baine 2006), and high densities have occasionally been observed at several locations in northern PNG, such as Kimbe Bay (Jones et al. 2004).

Outbreaks of *A. planci* can cause massive and widespread coral depletion (e.g. Pearson & Endean, 1969; Chesher, 1969; Randall, 1973; Colgan, 1987) though outbreaks vary greatly, not only in their intensity and magnitude, but also in their effects on coral communities (Moran, 1986). At Molokai Island, Hawaii, for example, outbreak densities of *A. planci* persisted for more than 18 months (1969-70), but had negligible impacts on the abundance of scleractinian corals (Branham et al., 1971). Incidences of extensive coral depletion caused by outbreaks of *A. planci* have been mostly restricted to the GBR, Micronesia and southern Japan (Moran, 1986; Birkeland & Lucas, 1990), possibly because coral communities in these locations are dominated by *Acropora* spp. (Family Acroporidae), which are particularly susceptible to crown-of-thorns predation (Glynn, 1974, 1976; De'ath & Moran, 1998; Pratchett, 2007).

Acanthaster planci are very selective in their choice of prey (Glynn, 1974; Ormond et al., 1976; De'ath & Moran, 1998; Pratchett, 2001, 2007), and their feeding preferences are fundamental in determining their effects on coral communities. In

general, *Acropora* spp. are among the most preferred prey corals and *Porites* spp. are least preferred (e.g., De'ath & Moran, 1998; Pratchett, 2007). However, there are many factors that influence feeding preferences of *A. planici*, including the nutritional content and growth form of corals, coral defences (e.g., mesenterial filaments, nematocysts and secondary metabolites), host defence by crustacean symbionts, the distribution and abundance of corals, and prior conditioning and learnt behaviour of the sea stars (reviewed by Moran, 1986; Birkeland & Lucas, 1990). If *A. planici* feed mostly on fast growing corals, which also recruit abundantly, (e.g., *Acropora* spp.) recovery of coral communities may be relatively fast (5-10 years). However, *A. planici* do sometimes feed on very old colonies of slow growing coral species, such as *Porites* spp. (Done, 1985).

The purpose of this study was to describe the distribution and abundance of *A. planici* in Bootless Bay, southern Papua New Guinea. The study was undertaken in March 2006, six months after the initial reports of large aggregations of *A. planici* and following significant localised efforts to control the outbreaks; divers from Motupore Island Research Station and Loloata Island Resort removed (hand-collected) or killed (injected with sodium bisulphate) almost 10,000 individual seastars between September 2005 – March 2006. In this study, patterns of abundance and the size structure of *A. planici* populations were studied to assess whether the outbreak resulted from a single massive influx of new recruits (e.g., Zann et al. 1987), or the progressive accumulation of individuals across multiple cohorts (e.g., Pratchett 2005). Moreover, the study examined the incidence of recent coral mortality in Bootless Bay to assess the extent and magnitude of coral depletion that was potentially caused by the recent outbreak of *A. planici*.

2. Materials and methods

2.1 Study sites

Bootless Bay is a large southerly-facing embayment southeast of Port Moresby, Papua New Guinea. This study was principally conducted at 3 inshore reefs: Loloata, Manunouha and Motupore. Sampling was conducted in areas of well developed fringing reefs; carbonate platforms that extend seaward from the shoreline and terminate in a well-defined reef crest (Fig. 1). Sampling was also conducted at several sites along the Sunken Barrier Reef, situated 3-5 km from the mainland (Fig. 1). The Sunken Barrier Reef extends 25 km across Bootless Bay, comprising many shallow reef platforms (10-20 m deep) inter-connected by deeper sections (>50 m deep) of contiguous reef. Sampling for this study was conducted at several sites on a distinct reef platform located due south of Loloata.

2.2. Size and abundance of *A. planci*

To document spatial variation in the size and abundance of *A. planci*, sampling was conducted on the reef crest (1.5-6 m depth) and reef slope (6-12 m depth) at 2-3 sites on each of the inshore reefs (Loloata, Manunouha, and Motupore). On the Sunken Barrier Reef, sampling was conducted on the reef crest (5-6 m) and reef slope (12-15 m) at 3 sites, as well as along the reef top (10-15 m depth) at two deeper sites (sites 9 and 12). Four replicate 50 × 4 m belt transects were surveyed in each zone at each site. All transects were run from haphazardly selected starting points and run parallel to the reef crest. A total of 96 transects, with a total sample area of 19,200 m², were surveyed during the course of the study.

To maximize detection of *A. planci*, divers moved very slowly (<5 m per minute) along each side of the transect tape carefully searching within and under all coral colonies for cryptic individuals. We also utilized a depletive sampling regime, whereby sea stars were collected and removed from the transect area once detected. A

second diver then resurveyed the same area to maximise detection of further cryptic individuals. The number of sea stars detected by the second diver was consistently very low (<2 per transect), indicating that further searching would have not greatly increased estimates of local seastar densities. In addition to recording the abundance of *A. planci*, we also recorded the size of every sea star detected on each transect. Sea stars were carefully removed from among coral branches or within crevices using a long wire hook. Once extracted, sea stars were laid flat on the reef matrix where they were measured. Body size of individual sea stars was recorded as the maximum whole body diameter (from the tips of opposite arms) to the nearest cm, following Pratchett (2005).

Spatial variation in the size and abundance of *A. planci* was analysed using log-linear analyses and analysis of variance (ANOVA), respectively. Log-linear analysis was used to test whether the size-structure of *A. planci* varied among reefs. Using reef as the categorical variable, the size categories were run through a categorical data analysis to ascertain whether the reefs should be examined independently. The response function in this model was the cumulative logit, which recognizes the order in the size classes. Variation in mean abundance of *A. planci* was analysed using a mixed model three-way ANOVA, exploring variation among reefs (4 levels, fixed), sites (3 levels, random) and zones (2 levels; crest and slope fixed). Count data were square root transformed prior to analysis to normalize the data and improve homogeneity of variances.

2.3 Coral surveys

Establishing the extent and severity of coral depletion caused by recent aggregations of *A. planci* in Bootless Bay was greatly hindered by a lack of data on coral cover and composition prior to September 2005. Therefore, to document likely changes in cover and composition of coral communities, we quantified area cover of

recently dead coral colonies. For the most part, dead corals observed on the reefs in Bootless Bay had only a thin layer of turf algae covering the skeleton and were still identifiable to genus or species, indicating that these corals probably died within the last 6 months (*sensu* Hutchings, 1986). The few dead corals with conspicuous signs of biological erosion were deemed to have died prior to September 2005 and were not counted. Estimates of coral mortality based on cover of recently dead corals may underestimate actual coral loss by failing to account for coral skeletons that were dislodged following whole colony mortality.

Percentage cover of live and recently killed scleractinian corals was estimated using 50-m point intercept transects, following Dodge et al. (1982). Coral surveys were conducted along all transects (N = 96 transects) used to quantify densities of *A. planci*. A total of 100 points were surveyed on each transect, spaced at 0.5m intervals along each transect. Fixed-distance point census was used in preference to random point census, as used during video census (Ryan, 2004) to maximise the distance between successive sampling points and thereby reduce autocorrelation among sample points. Any live or recently dead scleractinian corals underlying each point were identified to genus or species, where possible.

3. Results

3.1 Abundance of *A. planci*

In March 2006, average densities of *A. planci* in Bootless Bay were 3.23/ 200 m² (± 0.44 SE), equating 162/ hectare. Greatest densities of *A. planci* were found on the inshore reefs of Bootless Bay around Manunouha Island (4.62/ 200 m² ± 1.06 SE), Loloata Island (4.04/200m² ± 0.80 SE) and Motupore Island (3.62/ 200 m² ± 0.99 SE). In contrast, mean densities of *A. planci* at Sunken Barrier Reef were only 1.41/ 200 m²

(± 0.66 SE), and there were no sea stars recorded at two (out of 5) sites (Figure 2).

Average densities of *A. planci* were also generally higher on the reef crest (3.63 sea stars per 200m² ± 0.61 SE) compared to the reef slope (2.88/ 200 m² ± 0.65 SE).

However, variation in the abundance of *A. planci* was only significant among sites within reefs (Table 1) where abundance of *A. planci* varied up to 7-fold among sites separated by <1 km. At Loloata for example, mean densities of *A. planci* ranged from 1.12/ 200 m² (± 0.29 SE), up to 8.62/ 200 m² (± 1.10 SE) (Figure 2).

3.2 Size of *A. planci*

Maximum diameter of *A. planci* recorded within Bootless Bay ranged from 7cm to 38cm. However, most sea stars (82.3%) were between 20-35cm diameter, and only a very small proportion of individuals (<2%) were >35cm or <10cm total diameter. The overall size frequency distribution had a conspicuous single mode (25-30cm diameter), and size structure was approximately normally distributed around a mean size of 24.7cm diameter (Figure 3). There was slight, but significant variation in the size structure of *A. planci* among the four reefs (Chi-square, $\chi^2=11.2382$, $df = 3$, $p=0.01$). This was due to very limited numbers of smaller sea stars on the Sunken Barrier Reef, where only 6 (13%) out of 44 individuals were <20cm diameter. In contrast, smaller *A. planci* (<20cm diameter) accounted for 19-27% of sea stars recorded on the three inshore reefs (Loloata, Manunouha, and Motupore).

3.3 Coral mortality

In March 2006, average coral cover in Bootless Bay was 19.14% (± 1.57 SE) and the dominant coral taxa were massive *Porites*. Average cover of recently killed and readily identifiable coral skeletons, assumed to have been killed by recent infestations of *A. planci*, was 23.26% (± 1.9 SE). These corals varied in the extent to which they had

been colonised by turf algae, but had not yet been colonised by either crustose coralline or fleshy macro-algae, which tends to occur 15-20 months after coral death (Diaz-Pulido and McCook 2002). The most conspicuous and abundant of these dead corals were *Acropora florida* and *A. hyacinthus* (Fig.4). Estimates of proportional mortality within each of 29 coral taxa, range from 9% for *Diploastrea* up to 100% mortality for *A. florida* gp. (Figure 4). Among families of corals, proportional mortality was highest for Acroporidae and the Pocilloporidae, whereas rates of mortality recorded among Poritiidae were generally lower than all other families of corals (Figure 4).

Percentage cover of dead corals varied greatly among reefs, ranging from 32.5% (± 3.1 SE) at Loloata, down to 15.1% (± 2.6 SE) at Manunouha, 12.7% (± 1.6 SE) at the Sunken Barrier, and 6.8% (± 1.3 SE) at Motupore. Coral mortality was also highly variable among sites within reefs. Most notably, at site 10 on the Sunken Barrier Reef, percentage cover of dead corals was 34.8% (± 1.9 SE) compared to just 14.0% (± 1.4 SE) for live corals, which equates to 70.1% coral mortality (Figure 2). In contrast, dead coral cover was only 0.5% (± 0.18 SE) at site 13, where live coral cover was 45.3% (± 4.1 SE). Between zones, the area cover of dead coral was consistently higher on the reef crest compared to the reef slope, mainly due to extensive mortality of *A. hyacinthus* gp. that predominate in reef crest habitats.

Spatial variation in the estimates of recent coral mortality do not relate to recorded densities of *A. planci* at each site in March 2007. In March 2006, there were some sites where coral mortality appears disproportionately high relative to densities of *A. planci* (sites 5, 7, 9 and 10), and others where coral mortality is relatively low given local densities of sea stars (sites 2 and 6). Sites with high levels of coral mortality but low densities of *A. planci* (sites 5, 7, 9 and 10) were mostly impacted at the start of the outbreak episode, and densities of sea stars are now low due to intensive control efforts

and/or sea stars have moved to new locations. In contrast, sites with high densities of *A. planci*, but low levels of coral mortality are probably sites where infestations are relatively recent and may still cause significant coral loss.

4. Discussion

Despite significant recent control efforts, mean densities of *A. planci* recorded in Bootless Bay in March 2006 were well above the densities (15/ hectare) used to characterise reef-wide outbreaks on the Great Barrier Reef (Moran & De'ath, 1992) and represent the first reported outbreak of *A. planci* in this region. Recent and seemingly unprecedented outbreaks of *A. planci* have also been reported in several other locations throughout the Indo west Pacific (Banda Islands, UNESCO 2002; northern Sulawesi, De Vantier and Turak 2004; northern Sumatra, Herdiana et al 2008), which may signify important changes in environmental conditions (e.g., declining water quality, increased sedimentation, changing hydrodynamic patterns, or increasing ocean temperatures) that either promote delivery of larvae and/ or enhance post-settlement survival of *A. planci* throughout this region (*sensu* Brodie et al., 2005). Notably, the location of this study is close to several major rivers within the catchments of the most heavily populated region of PNG. However, there has not been any direct monitoring of changing water quality which could be used to ascribe causes for the recent outbreak of *A. planci* in Bootless Bay. There is also the possibility that over-fishing in these areas has ultimately lead to a release from predation for *A. planci* , following Dulvy et al. (2004) and Sweatman (2008), as these study locations are close very high population densities and subject to heavy fishing pressure (Wilkinson 2004).

The outbreak population of *A. planci* in Bootless Bay comprised individuals ranging in size from 7cm to 38cm in diameter, potentially representing two distinct cohorts. Sea stars <25 cm are generally considered less than 2 years old, whereas sea

stars between 35 and 40 cm are generally regarded as >4 years old (Stump, 1996). It is likely, therefore, that recruitment of *A. planci* in Bootless Bay commenced as early as 2002. However, the overall size structure of the outbreak population has a single mode with the majority of sea stars (82.3%) between 20 and 35 cm in diameter, which represents the initial and dominant cohort. Therefore, the current outbreak appears to have arisen mostly from a single massive recruitment event, which is typical of many *A. planci* outbreaks (e.g., Chesher 1969; Branham et al., 1971; Zann et al., 1987), as opposed to the prolonged and gradual increase in seastar densities recorded on some reefs which are classified as primary outbreaks (Pratchett, 2005). Rapid increases in the abundance of *A. planci* almost certainly represent a secondary outbreak (Johnson 1992), caused by spawning activities of large aggregations of adult seastars on upstream reefs (Moran, 1986; Birkeland & Lucas, 1990). Recent active outbreaks of *A. planci* have been reported in both Torres Strait, northern GBR (T. Done, Pers. Comm), and at Milne Bay, southern PNG (e.g., Baine 2006), both of which are potential sources of recruits for *A. planci* populations in Bootless Bay. Population genetics may prove useful to establish the connectivity of disparate populations of *A. planci* (e.g., Yasuda et al., 2006) to better understand the origin of outbreaks. However, such studies are only just beginning, following the recent development of microsatellite markers for *A. planci* (Yasuda et al., 2006).

Whatever the cause, current outbreaks of *A. planci* have almost certainly contributed to extensive coral depletion throughout Bootless Bay. There was no apparent relationship between current densities of sea stars and rates of coral loss reported at each site, but coral mortality reflects the cumulative impacts of *A. planci* throughout the last six months and the distribution and abundance of *A. planci* has been highly variable during this period. Large aggregations of *A. planci* can cause extensive

coral mortality over vast reef areas by continually moving from one area to the next and sequentially depleting either all or only the most preferred prey corals (Colgan, 1987).

In the 1960's, outbreaks of *A. planci* killed 80-100% of corals across entire reefs in both Guam (Chesher, 1969) and on the GBR (Pearson & Endean, 1969). One factor that determines the devastation on the reef is the coral composition prior to the outbreak.

Most notably, a reef that is dominated by highly preferred coral species, such as *Acropora* is likely to be much more affected than a reef dominated by *Porites* and/ or other massive species (De'Ath and Moran, 1998). *Acanthaster planci* will feed on non-preferred coral species, such as *Porites*, but only after they have exhausted their preferred prey resources (Pratchett, 2007).

Recent coral mortality in Bootless Bay, since the onset of *A. planci* outbreaks, is estimated to be >55%, based on the area cover of dead and intact coral skeletons. We argue that these dead but intact corals must have died relatively recently, at most 12 months ago and mostly within weeks to months, because colonisation by algae was minimal and the fine structure which made them individually recognisable had not even begun to erode. Assuming these coral have died within the last few months it is still not certain that this was caused by localised feeding activities of *A. planci*. Several factors, including coral disease, predation by other corallivores, and/ or bleaching, may have contributed to increased coral mortality during this period. However, it is notable the coral mortality was negligible at sites (1, 2 and 13) where *A. planci* had only recently or never been reported, suggesting most (if not all) of the dead intact corals recorded in Bootless Bay had been eaten by recent outbreaks of *A. planci*. Variation in levels of coral mortality recorded for different coral taxa is also largely consistent with patterns of prey preferences known for *A. planci* (De'ath & Moran, 1998; Pratchett 2001, 2007).

Acanthaster planci are well adapted to feed on a wide range of different corals, but often exhibit striking preference for a small suite of available prey species. Mostly, *A. planci* appears to favour corals of the family Acroporidae and particularly *Acropora* spp. (Keesing, 1992; De'ath & Moran, 1998; Pratchett, 2001, 2007). Accordingly, there were significant declines in percentage cover of all *Acropora* taxa in Bootless Bay. The worst affected taxa were *A. florida*, and *A. hyacinthus*. However, declines in live coral extended across a wide range of taxa, reflecting the severity of the outbreak. Feeding preferences of *A. planci* are fundamental in determining their effects on coral communities, especially during moderate outbreaks and when food is abundant. However, when outbreaks are particularly severe or food becomes scarce, *A. planci* will eat most coral species (Moran, 1986).

Despite significant changes in both coral cover and composition, the recovery of coral communities in Bootless Bay could be very rapid. Estimates of the time required for coral communities to recover from outbreaks of *A. planci* (and other major disturbances) are highly varied, ranging from <5 years to >1000 years (Pearson, 1981; Lourey et al., 2000). In extreme cases, coral communities may never regain their initial structure, even where coral cover returns to pre-disturbance levels (Endean et al., 1988; Berumen & Pratchett, 2006). The rate and extent of recovery in coral communities depends primarily on the amount of damage that has occurred. Completely denuded reefs recover much more slowly than reefs in which at least some corals survive to grow and reproduce (Connell, 1997). Recovery also depends on the types of corals affected (Done, 1985). In Bootless Bay, effects of *A. planci* were comparatively mild and most coral taxa persisted. Further, effects were mostly restricted to fast growing branching corals (e.g. *Acropora* spp.) as opposed to slow-growing massive species (e.g. *Porites* spp.) increasing the likelihood that recovery will occur quickly (Pearson, 1981; Done,

1985). Assuming that outbreaks of *A. planci* end soon (either through human intervention or natural population dynamics) there is a strong possibility that coral communities in Bootless Bay will not suffer any long-term effects of the recent outbreak.

5. Conclusions

In conclusion, high levels (up to 85% \pm 0.10 SE) of recent coral mortality were recorded throughout Bootless Bay, associated with a severe and seemingly unprecedented outbreak of *A. planci*. The outbreak of *A. planci* most likely resulted from a single massive influx of recruits spawned on nearby reefs with active outbreaks. Coral loss caused by this outbreak was significant, and selective removal of *Acropora* caused major changes in overall habitat structure. It is likely, however, that coral cover will recover quickly given that coral cover is still 19.1%, and only *A. florida* gp. has experienced local extinction, thus far. Ongoing monitoring of these reefs will be essential to assess whether populations of *A. planci* are being maintained through continual input of new larvae, and to further refine predicted effects of *A. planci* in these important reef environments, which support a high diversity of coral reef organisms (Baine & Harasti, 2007).

Acknowledgment

This research was conducted towards a MAppSc degree by T. Schenk, at James Cook University. This research was supported by ARC funding to MSP and AHB. Field sampling was conducted with in-kind support and extensive logistic assistance from Motupore Island Research Centre and Loloata Island Resort. This manuscript benefited greatly from discussions with H. Sweatman, T. Done, and M. Yasuda.

References

- Allen, G.R. (2007) Conservation hotspots of biodiversity and endemism for Indo-Pacific coral reef fishes. *Aquatic Conservation: Marine and Freshwater Ecosystems*, 18, 541-556.
- Baine, M.S.P., 2006. A major outbreak of crown-of-thorns starfish in Bootless Bay, Central Province, Papua New Guinea. *Coral Reefs*, 25, 607.
- Baine, M.S. P., Harasti, D., 2007. The marine life of Bootless Bay, Papua New Guinea. University of Papua New Guinea, Port Moresby.
- Baird, A.H., Campbell, S.J., Anggoro, A.W., Ardiwijaya, R.L., Fadli, N., Herdiana, Y., Kartawijaya, T., Mahyiddin, D., Mukminin, A., Pardede, S.T., Pratchett, M.S., Rudi, E., Siregar, A.M., 2005. Acehnese reefs in the wake of the Asian tsunami. *Current Biology*, 15, 1926-1930.
- Berumen, M.L., Pratchett, M.S., 2006. Persistent disturbance and long-term shifts in the structure of fish and coral communities at Tiahura Reef, Moorea. *Coral Reefs*, 25, 647-653.
- Birkeland, C., Lucas, J.S., 1990. *Acanthaster planci*: Major management problem of coral reefs. CRC Press, Boston.
- Branham, J.M., Reed, S.A., Bailey, J.H., 1971. Coral-eating sea stars *Acanthaster planci* in Hawaii. *Science*, 172, 1155-1157.
- Brodie, J., Fabricius, K., De'Ath, G., Okaji, K., 2005. Are increased nutrient inputs responsible for more outbreaks of crown-of-thorns starfish? An appraisal of the evidence. *Marine Pollution Bulletin*, 51, 266-278.
- Bruno, J.F., Selig, E.R., Casey, K.S., Page, C.A., Willis, B.L., Harvell, C.D., Sweatman, H., Melendy, A.M., 2007. Thermal stress and coral cover as drivers of coral disease outbreaks. *PLoS Biology*, 5, 1220-1227.

- Bruno, J.F., Selig, E.R., 2007. Regional decline of coral cover in the Indo-Pacific: Timing, extent, and subregional comparisons. *PLoS One* 2(8): e711.
- Chesher, R.H., 1969. Destruction of Pacific corals by the sea star *Acanthaster planci*. *Science*, 18, 280-283.
- Colgan, M.W., 1987. Coral reef recovery on Guam (Micronesia) after catastrophic predation by *Acanthaster planci*. *Ecology*, 68,1592-1605.
- Colin, L.P., 1977. The reefs of Cocos-Keeling Atoll. Eastern Indian Ocean. Proceedings of the 3rd International Coral Reef Symposium, 1, 35-42.
- Connell, J.H., 1997. Disturbance and recovery of coral assemblages. *Coral Reefs*, 16, S101-S113.
- De'ath, G., Moran, P.J., 1998. Factors affecting the behaviour of crown-of-thorns starfish (*Acanthaster planci* L.) on the Great Barrier Reef: 2: Feeding preferences. *Journal of Experimental Marine Biology and Ecology*, 220, 107-126.
- De Vantier, L., Turak, E. 2004. Managing Marine Tourism – Bunaken National Park and adjacent waters, North Sulawesi, Indonesia 2003, USAID
- Diaz-Pulido, G., McCook, L.J. 2002. The fate of bleached corals : patterns and dynamics of algal recruitment. *Marine Ecology Progress Series*, 232 , 115-128.
- Dodge, R.E., Logan, A., Antonius, A., 1982. Quantitative reef assessment studies in Bermuda: a comparison of methods and preliminary results. *Bulletin of Marine Science*, 32, 745–760.
- Done, T.J., 1985. Effects of two *Acanthaster* outbreaks on coral community structure: the meaning of devastation. Proceedings of the 5th International Coral Reef Symposium, 5, 315-320.

- Dulvy, N. K., Freckleton, R.P., Polunin, N.V.C., 2004. Coral reef cascades and the indirect effects of predator removal by exploitation. *Ecology Letters*, 7, 410-416.
- Endean, R., Cameron, A.M., DeVantier, L.M., 1988. *Acanthaster planci* predation on massive corals: The myth of rapid recovery of devastated reefs. *Proceedings of the 6th international Coral Reef Symposium*, 2, 143-148.
- Glynn, P.W., 1974. The impact of *Acanthaster* on corals and coral reefs in the eastern Pacific. *Environmental Conservation* 1, 295-303.
- Glynn, P.W., 1976. Some physical and biological determinants of coral community structure in the Eastern Pacific. *Ecological Monographs*, 46, 431-456.
- Goldberg, J., Wilkinson, C., 2004. Global threats to coral reefs: coral bleaching, global climate change, disease, predator plagues, and invasive species. In: Wilkinson, C. (Ed). *Status of coral reefs of the world: 2004* (pp. 67-92) Australian Institute of Marine Science, Townsville.
- Herdiana Y, Kartawijaya T, Ardiwijaya RL, Setiawan F, Prasetya R, Pardede ST, Campbell SJ (2008) *Ecological survey on coral reefs of Simeulue and Banyak Islands - Aceh 2007*, Wildlife Conservation Society - Indonesia Marine Program, Bogor, Indonesia
- Hughes, T.P., Baird, A.H., Bellwood, D.R., Card, M., Connolly, S.R., Folke, C., Grosberg, R., Hoegh-Guldberg, O., Jackson, J.B.C., Kleypas, J., Lough, J.M., Marshall, P., Nystrom, M., Palumbi, S.R., Pandolfi, J.M., Rosen, B., Roughgarden, J., 2003. Climate change, human impacts, and the resilience of coral reefs. *Science*, 301, 929-933.
- Hughes, T.P., Connell, J.H., 1999. Multiple stressors on coral reefs: A long-term perspective. *Limnology and Oceanography*, 44, 932-940.

- Hutchings, P.A., 1986. Biological destruction of coral reefs: A review. *Coral Reefs*, 4, 239-252.
- Jones, G.P., McCormick, M.I., Srinivasan, M., Eagle, J.V., 2004. Coral declines threaten fish biodiversity in marine reserves. *Proceedings of the National Academy of Science, USA*, 101, 8251-8253.
- Johnson, C., 1992. Settlement and recruitment of *Acanthaster planci* on the Great Barrier Reef: a question of process and scale. *Australian Journal of Marine and Freshwater Research*, 43, 611-627.
- Kenchington, R.A. 1977. Growth and recruitment of *Acanthaster planci* (L.) on the Great Barrier Reef. *Biological Conservation*, 11, 103-118.
- Keesing, J.K. 1992. Influence of persistent sub-infestation density *Acanthaster planci* (L.) and high density *Echinometra mathaei* (de Blainville) populations on coral reef community structure in Okinawa, Japan. *Proceedings of the 7th international Coral Reef Symposium*, 2, 769-779.
- Koonjul, M.S., Mangar, V., Luchmun, J.P., 2003. Eradication of crown of thorns starfish (*Acanthaster planci*) infestation in a patch reef in the lagoon of Ile Aux Cerfs, Mauritius. AMAS 2003. Food and Agricultural Research Council, Réduit, Mauritius 333-338.
- Knowlton, N., 2001. The future of coral reefs. *Proceedings of the National Academy of Science, USA*, 98, 5419-5425.
- Lane, D.J.W., 1996. A crown-of-thorns outbreak in the eastern Indonesian Archipelago, February 1996. *Coral Reefs*, 15, 209-210.
- Lourey, M.J., Ryan, D.A.J., Miller, I.R., 2000. Rates of decline and recovery of coral cover on reefs impacted by, recovering from and unaffected by crown-of-thorns

- starfish *Acanthaster planci*: a regional perspective of the Great Barrier Reef. Marine ecology progress Series, 196, 179-186.
- Lucas, J.S., 1984. Growth, maturation and effects of diet in *Acanthaster planci* (L.) (Asteroidea) and hybrids reared in the laboratory. Journal of Experimental Marine Biology and Ecology, 79, 129-147.
- Marshall, P.A., Schuttenberg, H., 2006. Adapting coral reef management in the face of climate change. Coastal and Estuarine Studies, 61, 223-241.
- Moran, P.J., 1986. The *Acanthaster* phenomenon. Oceanography and Marine Biology: an Annual Review, 24, 379-480.
- Moran, P.J., DeAth, G., 1992. Estimates of the abundance of the crown-of-thorns starfish *Acanthaster planci* in outbreaking and non-outbreaking populations on reefs within the Great Barrier Reef. Marine Biology, 113, 509-515.
- Moran, P.J., Bradbury, R.H., Reichelt, R.E., 1988, Distribution of recent outbreaks of the crown-of-thorns starfish (*Acanthaster planci*) along the Great Barrier Reef: 1985-1986. Coral Reefs, 7, 125-137.
- Munday, P.L., 2004. Habitat loss, resource specialization and extinction on coral reefs. *Global Change Biology*, 10, 1642-1647.
- Ormond, RFG, Campbell, A.C. 1974. Formation and breakdown of *Acanthaster planci* aggregations in the Red Sea. Proceedings of the 2nd international Coral Reef Symposium, 1, 577-590.
- Ormond, R.F.G., Hanscomb, N.J., Beach, D.H., 1976. Food selection and learning in the crown-of-thorns starfish *Acanthaster planci* (L.). Marine Behaviour and Physiology 4, 93-105.

- Pearson, R.G., 1981. Recovery and recolonisation of coral reefs. *Marine Ecology Progress Series*, 4, 105-122.
- Pearson, R.G., Endean, R., 1969. A preliminary study of the coral predator *Acanthaster planci* (L.) (Asteroidea) on the GBR. *Fisheries Notes*, 3, 27-55.
- Pratchett, M.S., 2001. Influence of coral symbionts on feeding preferences of crown-of-thorns starfish. *Marine Ecology Progress Series*, 214, 111-119.
- Pratchett, M.S., 2005. Dynamics of an outbreak population of *Acanthaster planci* at Lizard Island, northern Great Barrier Reef (1995-1999). *Coral Reefs*, 24, 453-462.
- Pratchett, M.S., 2007. Feeding preferences of *Acanthaster planci* (L.) under controlled conditions of food availability. *Pacific Science*, 61, 113-120.
- Pyne, R.R., 1970. Notes on the crown-of-thorns starfish: its distribution in Papua and New Guinea (Echinodermata: Asteroidea: Acanthasteridae). *Papua New Guinea Journal of Agriculture, Forestry and Fisheries*, 21, 128-138.
- Quinn, N.J., Kojis, B.L. 1987. Distribution and abundance of *Acanthaster planci* in Papua New Guinea. *Bulletin of Marine Science*, 41, 576-578.
- Randall, R.H., 1973. Distribution of corals after *Acanthaster planci* (L.) infestation at Tanguisson Point, Guam. *Micronesica*, 3, 213-222.
- Reichelt, R.E., Bradbury, R.H., Moran, P.J., 1990. Distribution of *Acanthaster planci* outbreaks on the GBR between 1966 and 1989. *Coral Reefs*, 9, 97-103.
- Ryan, D.A.J., 2004. Point sampling strategies for estimating coverage from benthic video transects. *Environmetrics*, 15, 193-207
- Stump, R., 1996. An investigation to describe population dynamics of *Acanthaster planci* (L.) around Lizard Island, Cairns section, GBR Marine Park. CRC Reef, Townsville.

- Sweatman, H., Abdo, D., Burgess, S., Cheal, A., Coleman, G., Delean, S., Emslie, M., Miller, I., Osborne, K., Oxley, W., Page, C., Thompson, A., 2004. Long-term Monitoring of the Great Barrier Reef. Australian Institute of Marine Science, Townsville.
- Tomascik, T., Mah, A.J., Nontji, A., Moosa, M.K. 1997. The Ecology of the Indonesia Seas, Part II. The Ecology of Indonesia Series Volume VIII. Periplus Edition (HK) Ltd.
- UNESCO (2002) Report on a rapid ecological assessment of the Banda Islands, Maluku, Eastern Indonesia, Jakarta
- Weber, J.N., Woodhead, P.M.J., 1970. Ecological studies of the coral predator *Acanthaster planci* in the South Pacific. *Marine Biology*, 6, 12-17.
- Wilkinson, C., 2004. Status of the Coral Reefs of the World: 2004. Australian Institute of Marine Science, Townsville
- Wilson, S.K., Graham, N.A.J., Pratchett, M.S., Jones, G.P., Polunin, N.V.C. 2006. Multiple disturbances and the global degradation of coral reefs: are reef fishes at risk or resilient? *Global Change Biology*, 12, 2220-2234.
- Yamaguchi, M., 1974. Growth of juvenile *Acanthaster planci* (L.) in the laboratory. *Pacific Science*, 28, 123-138.
- Yasuda, N., Nagai, S., Hamaguchi, M., Lian, C.L., Nadaoka, K., 2006. Development of microsatellite markers for the crown-of-thorns starfish *Acanthaster planci*. *Molecular Ecology Notes*, 6, 141-143.
- Zann, L., Brodie, J., Berryman, C., Naqasima, M., 1987, Recruitment, ecology, growth and behavior of juvenile *Acanthaster planci* (L.) (Echinodermata: Asteroidea). *Bulletin of Marine Science*, 41, 561-575.

Table 1. Three-way ANOVA to test for variation in the abundance of *A.planci* among reefs (four reefs), sites (13 sites) and zones (crest, slope, and top). Data were unbalanced because not all zones occurred at all of the sites. Abundance was also square root transformed prior to the analysis to improve normality and homogeneity.

Source	df	MS	F	p
Reef	3	10.25	2.19	0.18
Site(reef)	7	4.76	4.99	0.0001
Zone	1	2.19	2.29	0.13
Site(Reef)*Zone	7	0.95	1.43	0.21
Reef*Zone	3	0.96	1.01	0.39
Error	72	0.67		

Figure 1. Map of Bootless Bay showing the four study reefs (Loloata, Manunouha, Motupore, and Sunken Barrier) and specific study sites (numbered 1-13).

Figure 2. Average (\pm SE) density of *Acanthaster planci* (grey bars), and coral mortality (white bars) at 13 sites from four reefs in Bootless Bay. Data is pooled across zones (crest and slope).

Figure 3. Overall size-structure for all *A. planci* ($n = 311$ sea stars) recorded across all 4 reefs (Motupore, Loloata, Manunouha and Sunken Barrier Reef) within Bootless Bay, March 2006.

Figure 4. Taxonomic variation in proportional mortality of scleractinian corals recorded across four reefs in Bootless Bay. Proportional mortality was estimated based on relative abundance of live versus dead coral colonies with dead coral colonies assumed to have died within the 6-months from September 2006 to March 2007

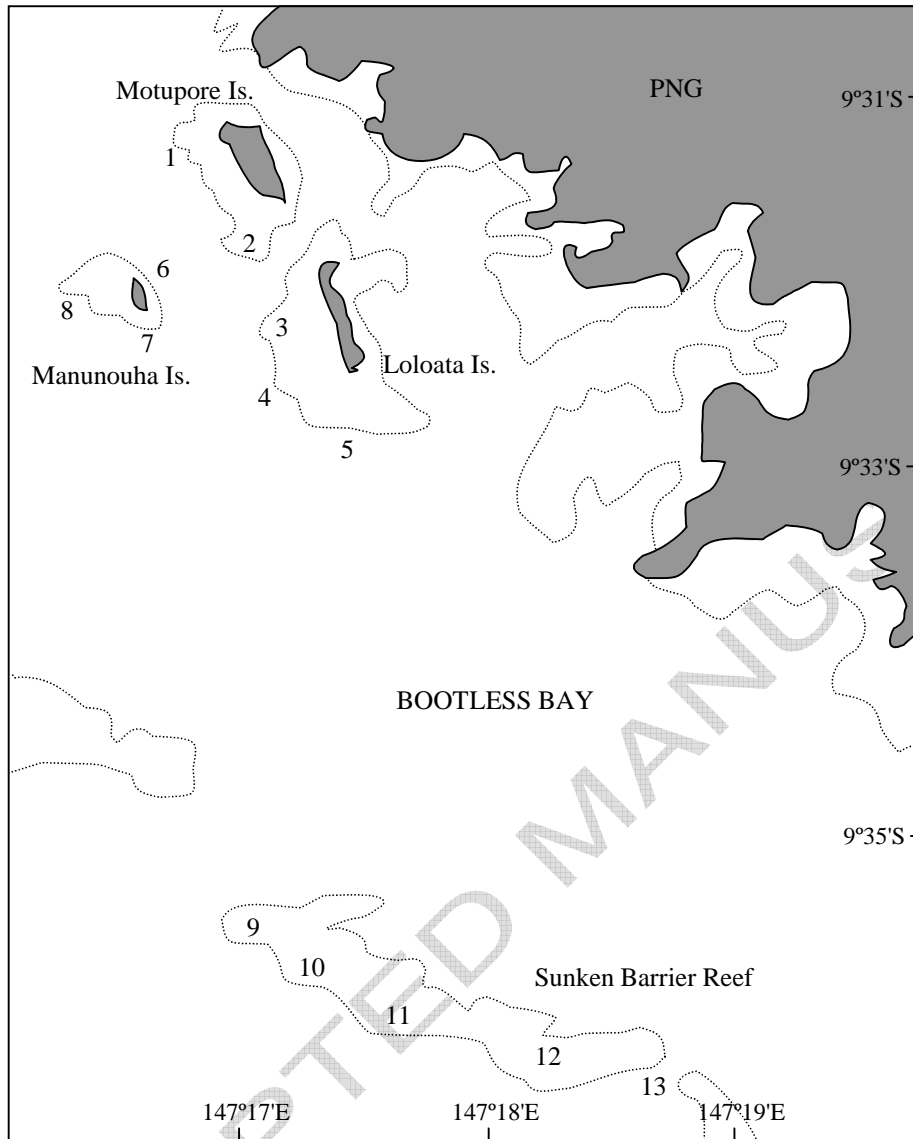


Figure 1. Map of Bootless Bay showing the study reefs (Loloata, Manunouha, Motupore, and Sunken Barrier) and specific study sites (numbered 1-13).

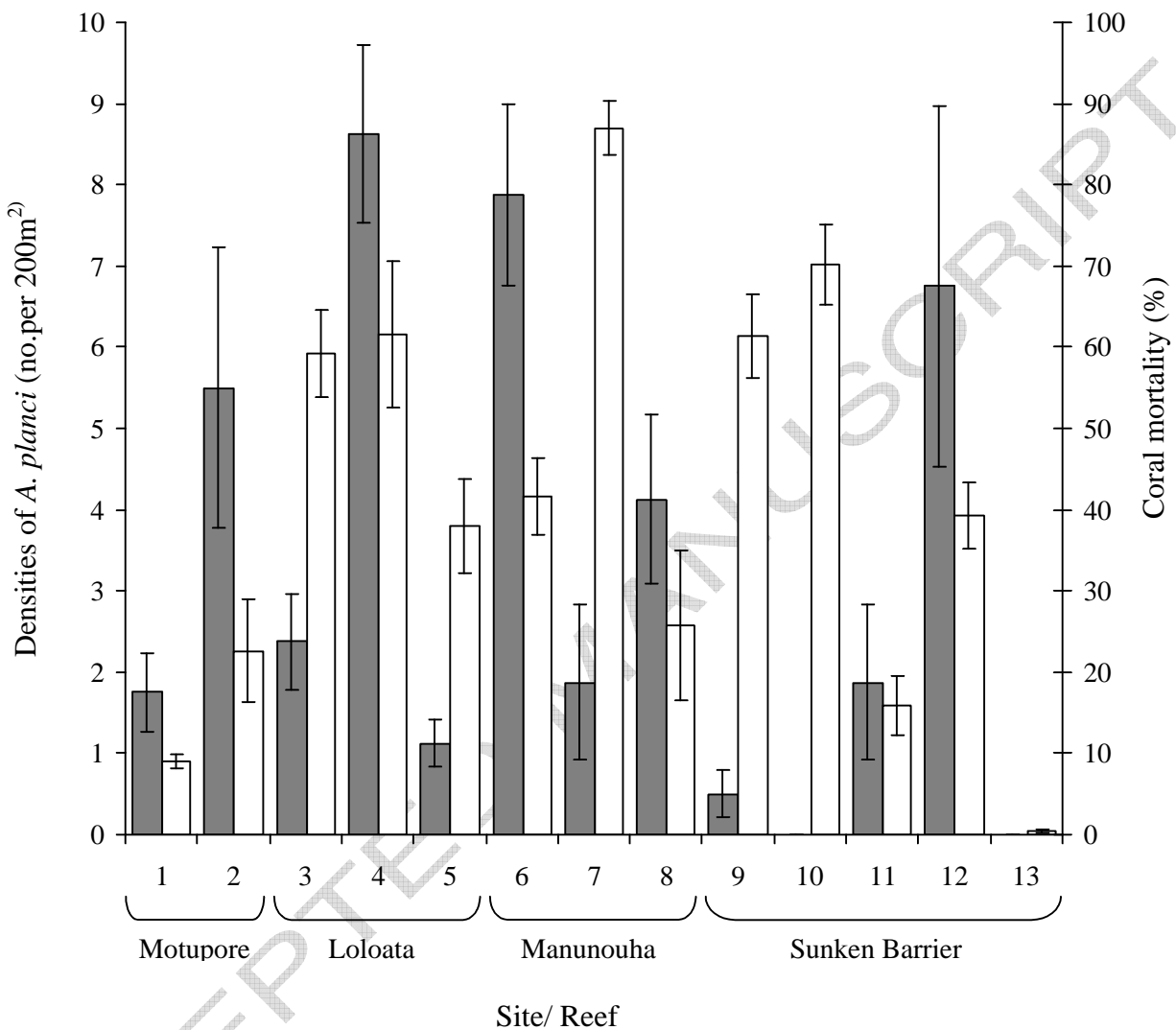


Figure 2. Average (\pm SE) density of *Acanthaster planci* (grey bars), and coral mortality (white bars) at 13 sites from four reefs in Bootless Bay. Data is pooled across zones (crest and slope).

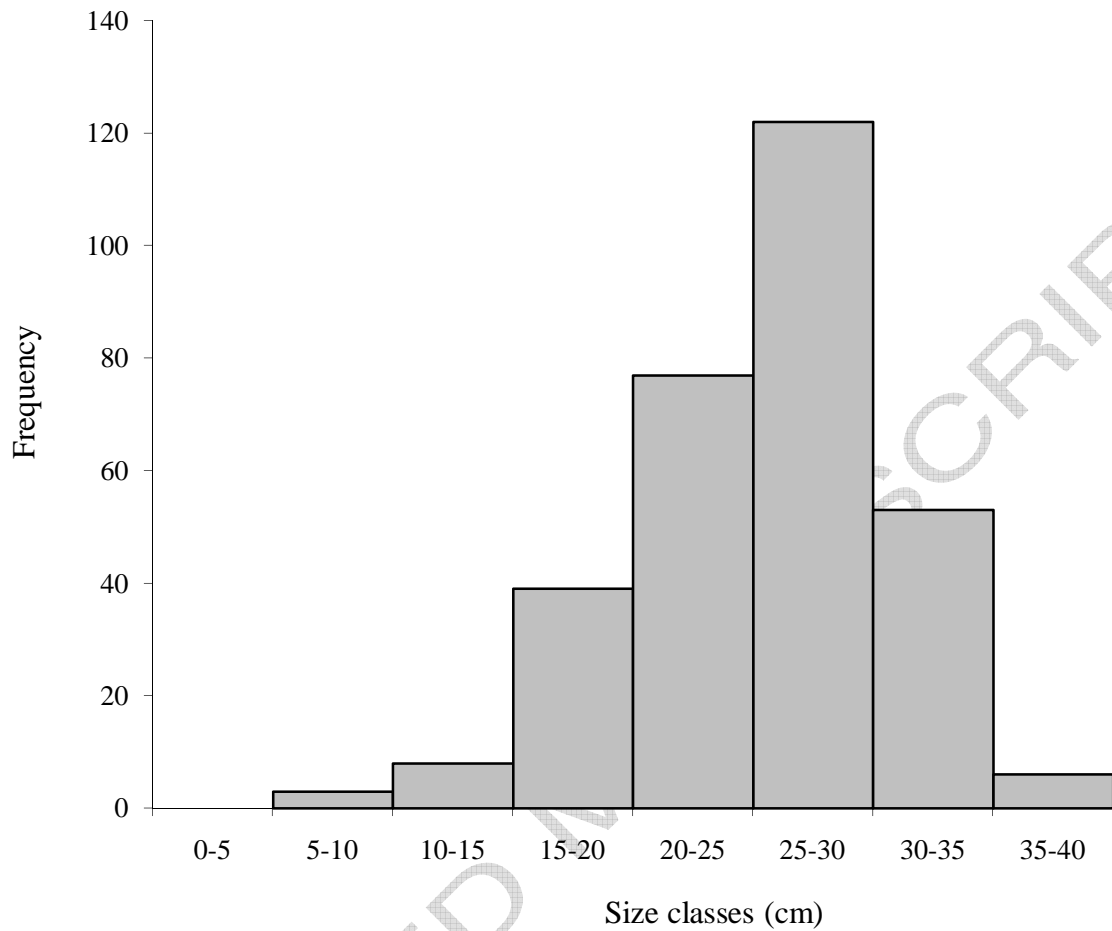


Figure 3. Overall size-structure for all *A. planci* ($n = 311$ seatars) recorded across all 4 reefs (Motupore, Loloata, Manunouha and Sunken Barrier Reef) within Bootless Bay, March 2006.

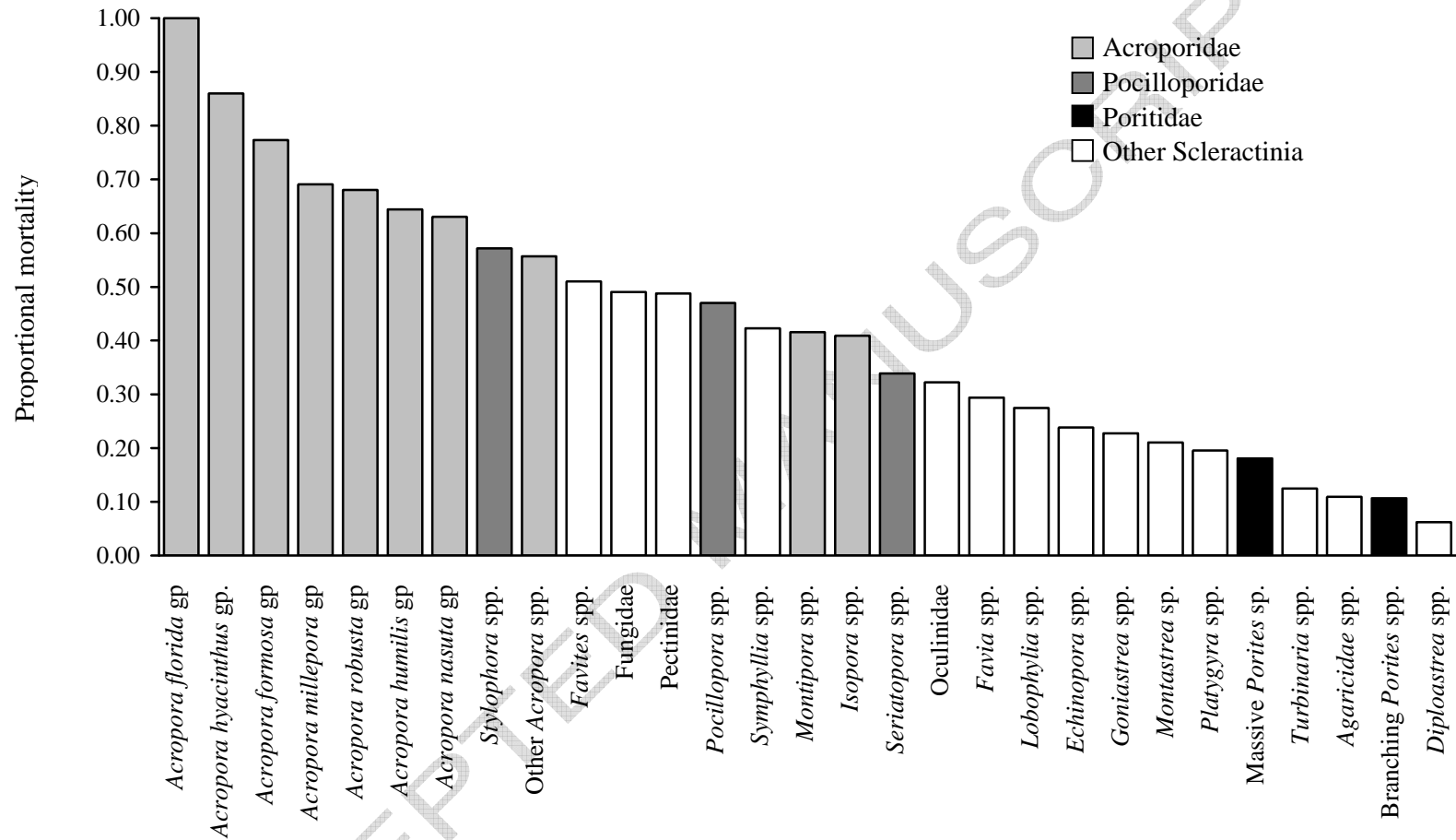


Figure 4. Taxonomic variation in proportional mortality of scleractinian corals recorded across four reefs in Bootless Bay. Proportional mortality was estimated based on relative abundance of live versus dead coral colonies with dead coral colonies assumed to have died within the 6-months, from September 2006 to March 2007