



HAL
open science

Neuronal cell cycle re-entry mediates Alzheimer disease-type changes

Andrew Mcshea, Hyoung-Gon Lee, Robert B. Petersen, Gemma Casadesus, Inez Vincent, Nancy J. Linford, Jens-Oliver Funk, Robert A. Shapiro, Mark A. Smith

► **To cite this version:**

Andrew Mcshea, Hyoung-Gon Lee, Robert B. Petersen, Gemma Casadesus, Inez Vincent, et al.. Neuronal cell cycle re-entry mediates Alzheimer disease-type changes. *Biochimica et Biophysica Acta - Molecular Basis of Disease*, 2007, 1772 (4), pp.467. 10.1016/j.bbadis.2006.09.010 . hal-00562730

HAL Id: hal-00562730

<https://hal.science/hal-00562730>

Submitted on 4 Feb 2011

HAL is a multi-disciplinary open access archive for the deposit and dissemination of scientific research documents, whether they are published or not. The documents may come from teaching and research institutions in France or abroad, or from public or private research centers.

L'archive ouverte pluridisciplinaire **HAL**, est destinée au dépôt et à la diffusion de documents scientifiques de niveau recherche, publiés ou non, émanant des établissements d'enseignement et de recherche français ou étrangers, des laboratoires publics ou privés.

Accepted Manuscript

Neuronal cell cycle re-entry mediates Alzheimer disease-type changes

Andrew McShea, Hyoung-gon Lee, Robert B. Petersen, Gemma Casadesus, Inez Vincent, Nancy J. Linford, Jens-Oliver Funk, Robert A. Shapiro, Mark A. Smith

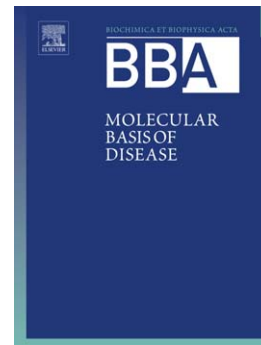
PII: S0925-4439(06)00195-5
DOI: doi: [10.1016/j.bbadis.2006.09.010](https://doi.org/10.1016/j.bbadis.2006.09.010)
Reference: BBADIS 62639

To appear in: *BBA - Molecular Basis of Disease*

Received date: 11 September 2006
Revised date: 26 September 2006
Accepted date: 27 September 2006

Please cite this article as: Andrew McShea, Hyoung-gon Lee, Robert B. Petersen, Gemma Casadesus, Inez Vincent, Nancy J. Linford, Jens-Oliver Funk, Robert A. Shapiro, Mark A. Smith, Neuronal cell cycle re-entry mediates Alzheimer disease-type changes, *BBA - Molecular Basis of Disease* (2006), doi: [10.1016/j.bbadis.2006.09.010](https://doi.org/10.1016/j.bbadis.2006.09.010)

This is a PDF file of an unedited manuscript that has been accepted for publication. As a service to our customers we are providing this early version of the manuscript. The manuscript will undergo copyediting, typesetting, and review of the resulting proof before it is published in its final form. Please note that during the production process errors may be discovered which could affect the content, and all legal disclaimers that apply to the journal pertain.



Neuronal Cell Cycle Re-entry Mediates Alzheimer Disease-Type Changes

Andrew McShea¹, Hyoung-gon Lee², Robert B. Petersen², Gemma Casadesus², Inez Vincent³,
Nancy J. Linford³, Jens-Oliver Funk⁴, Robert A. Shapiro^{5,†}, Mark A. Smith^{2,†}

¹Departments of Biology and Chemistry, CombiMatrix Corp, Mukilteo, Washington, USA;

²Department of Pathology, Case Western Reserve University, Cleveland, Ohio, USA;

³Department of Pathology, University of Washington, Seattle, Washington, USA; ⁴Department of Dermatology, Friedrich-Alexander-University of Erlangen-Nuremberg, Erlangen, Germany;

⁵Department of Physiology and Pharmacology, Oregon Health & Science University, Portland, Oregon, USA

†These authors contributed equally to this work.

Running Title: Neuronal model of cell cycle re-entry

Keywords: Alzheimer disease, cell cycle, phosphorylation, tau

Corresponding Author
Mark A. Smith, Ph.D.
Department of Pathology
Case Western Reserve University
2103 Cornell Rd.
Cleveland, Ohio 44106, USA
Tel: 216-368-3670
Fax: 216-368-8964
mark.smith@case.edu

SUMMARY

Evidence showing the ectopic re-expression of cell cycle-related proteins in specific vulnerable neuronal populations in Alzheimer disease led us to formulate the hypothesis that neurodegeneration, like cancer, is a disease of inappropriate cell cycle control. To test this notion, here we used adenoviral-mediated expression of c-myc and ras oncogenes to drive postmitotic primary cortical neurons into the cell cycle. Cell cycle re-entry in neurons was associated with increased DNA content, as determined using BrdU and DAPI, and the re-expression of cyclin B1, a marker for the G₂/M phase of the cell cycle. Importantly, we also found that cell cycle re-entry in primary neurons leads to tau phosphorylation and conformational changes similar to that seen in Alzheimer disease. This study establishes that the cell cycle can be instigated in normally quiescent neuronal cells and results in a phenotype that shares features of degenerative neurons in Alzheimer disease. As such, our neuronal cell model may be extremely valuable for the development of novel therapeutic strategies.

INTRODUCTION

Alzheimer disease (AD) is a chronic degenerative disorder characterized by the intracellular accumulation of highly phosphorylated tau within select neuronal populations [1, 2]. While the mechanism(s) that lead to the accumulation of phosphorylated tau are unresolved, an increasing body of work suggests that cell cycle disturbances may play an early role in disease pathogenesis [3-5]. In fact, highly phosphorylated tau is intimately linked to the cell cycle since a near identical phosphorylation of tau also occurs when cells are mitotically active and tau phosphorylation is driven by cyclin-dependent kinases (CDKs) [6-10]. Of potential mechanistic importance, a number of CDKs are ectopically re-expressed in neurons in AD and such CDKs are known to phosphorylate tau in *in vitro* assays in a manner similar to that found in AD *in vivo* [3, 4, 11-13]. Since cell cycle protein expression in AD precedes the appearance of phosphorylated tau [14], a possible cause-effect relationship is indicated. Although neurons in the normal adult brain are generally quiescent and in the G₀ phase of the cell cycle, neurons vulnerable to degeneration in AD appears to emerge from this postmitotic state and are phenotypically suggestive of cells that have re-entered into the cell cycle [3-5, 11-31]. Indeed, the successful duplication of DNA [32] indicates that such neurons successfully complete S phase and precludes the possibility that the re-expression of various cell cycle markers is an epiphenomena of reduced proteosomal activity.

To directly test the effect of neuronal cell cycle re-entry on the initiation of the neuronal alterations observed in AD, we infected primary cortical neurons *in vitro* with a combination of c-myc and ras oncogenes to force non-dividing neurons into the cell division cycle. Our observations from this previously unreported methodology support a model of oncogenic transformation as an early event in the development of AD.

MATERIALS AND METHODS

Cell Culture

Primary cortical neurons were prepared from Sprague-Dawley rat embryos at 17-19 days gestation as described [33]. Briefly, cerebral neocortices were removed and minced in dissociation buffer, treated with trypsin and dissociated by trituration in DNase and trypsin inhibitor. Cells were plated at a concentration of 2×10^5 cells/ml on poly-D-lysine-coated slide chambers or 0.9×10^6 cells/ml on poly-D-lysine coated 10 cm tissue culture plates and infected with the appropriate adenoviral vectors 5 days after plating. Under these conditions, uninfected cultures are viable for 2-3 weeks.

Adenoviral Gene Transduction

Recombinant adenoviruses expressing green fluorescent protein (GFP), c-myc or ras (H-RAS61L) were constructed and provided by Joseph Nevins at Duke University [34]. Virus stocks were amplified in HEK 293 cells and purified by CsCl banding. Each virus is used as follows: GFP, 5×10^{10} pfu/ml; Ras 1.25×10^9 pfu/ml; Myc 4×10^{10} pfu/ml. Rat embryonic cortical neurons were infected at a multiplicity of infections (MOI) of 50 pfu/cell, and no cytotoxicity was observed at this MOI.

Immunocytochemistry

Cells were fixed in 1% paraformaldehyde in phosphate-buffered saline (PBS) for 30 minutes and permeabilized with 0.5% NP-40 for 5 minutes at room temperature, washed with PBS, then blocked with 5% non-fat milk in PBS for 1 hour. Antibodies were incubated in 1% non-fat milk

in PBS overnight at 4°C. Secondary antibodies were incubated for 40 minutes at room temperature, washed three times in 1% non-fat milk in PBS and samples counterstained with DAPI (1 µg/ml in methanol for 15 minutes at 37°C) to localize all nuclei before mounting in Vector shield (Vector Laboratories, Burlingame, CA). Samples were analyzed under epifluorescence on a Nikon Inverted microscope with Infinity optics and images captured with Metamorph software (Meridian Instruments, Kent, WA). Omission of primary antibodies showed no positive fluorescent signals.

Antibodies

Hybridoma supernatants of TG3 and Alz50 antibodies (gift of Peter Davies) were used at 1:50 and 1:20 respectively. The TG3 monoclonal antibody was raised against purified PHF's [3] and recognizes tau phosphorylated at Thr 231. Alz50 was raised against AD brain homogenates [35] and recognizes a conformational epitope requiring both N terminal residues (7-9) and residues 312-342 in the third microtubule binding domain [36]. Cyclin B1 (Santa Cruz, Santa Cruz, CA, 1:500) is a rabbit polyclonal raised against full-length recombinant cyclin B. Fluorescent secondary reagents used were goat anti-mouse CY3 or goat anti-rabbit FITC at dilution of 1:500 (Jackson Laboratories, West Grove, PA). Isotype specific biotin-conjugated and anti-streptavidin FITC/CY3 (Southern Biotech, Birmingham, AL) were also used.

DNA Measurements

DNA content was measured following counterstaining fixed samples with DAPI. DNA replication was quantified by labeling primary neuronal cultures with 10 µM bromodeoxyuridine (BrdU) coincident with viral infection. Nuclear BrdU accumulation was assayed by in situ

immunofluorescence with an anti-BrdU monoclonal antibody [37] (Becton Dickinson, San Jose, CA). DNA content (mean intensity) and BrdU incorporation (% positive cells) measurements were carried out by measuring 5 random fields using Metamorph Image Analysis Software (Meridian Instruments, Kent, WA). All experiments were performed at least in triplicate and data presented is the mean of all experiments. The student's t test was used to determine significance.

RESULTS

Cell Cycle Entry

Cultured primary rat cortical neurons (E18) were infected with adenovirus vectors encoding two different oncogenes, myc and a mutationally active ras (H-RAS61L), in an attempt to force the post-mitotic neurons into the cell cycle. Primary cortical neurons were infected 5 days after plating and fixed for immunostaining after either 2 or 5 days.

To determine if cells had re-entered the cell division cycle and initiated DNA replication (i.e., entered S-phase), cultured neurons infected with GFP or ras/myc were incubated with BrdU and immunolabeled with anti-BrdU antibody (Fig 1A). BrdU incorporation levels in between 30 and 40% of cells expressing myc/ras were significantly elevated (Fig 1 B, $p < 0.001$) compared to cells expressing GFP, suggesting that infected neurons synthesize DNA and re-enter into the cell cycle. A mean incorporation frequency (background) of about 10% (Fig 1B) in GFP control infected cultures was consistent with the post-mitotic neuronal population representing >90% of the culture [38]. To further characterize this cell cycle-related phenomena, we localized cyclin B1, a cell-cycle marker specifically induced in the late S/G₂ phase of the cell cycle but not associated with cells in the G₁ phase of the cell cycle, and found increased cyclin B1 in ras/myc adenovirus infected neurons (Fig 1C).

To examine if the oncogenically-infected neurons had become mitotically active (i.e., entered M-phase), the neurons were counterstained with DAPI to identify mitotic figures and no mitotic figures were found (Fig 1C). Therefore, while the BrdU data (Fig 1A) indicates progression into S-phase, nuclear morphology (Fig 1C) indicates that the mitotic index was not increased in oncogene-infected neurons.

These data suggest that infected neurons arrest at the beginning of mitosis but fail to complete DNA synthesis and progress to cell division. Such a notion is consistent with the significant increase in DAPI labeling of nuclei ($p < 0.001$) (Fig 1D) and absence of mitotic figures. Nuclear translocation of cyclin B1 is typically the mechanism by which mitosis is initiated and cytoplasmic cyclin B1 expression is associated with cells in the G₂ phase of the cell cycle or that are arrested at the earliest stages of the G₂/M checkpoint. Therefore, our data suggest that primary neurons that are forced to re-enter the cell cycle do not overcome the G₂/M check point and therefore do not progress to M phase (i.e., analogous to findings in AD) [32].

Tau Expression

To examine whether ras/myc adenoviruses-induced cell cycle re-entry of neurons was associated with AD-like tau changes, we used two different antibodies that detect abnormalities in tau: tau phosphorylation (phospho-threonine 231;TG3 antibody) and tau conformational changes (Alz50 antibody).

On average, $30 \pm 7.4\%$ of the ras/myc adenovirus infected neurons (Fig 2B), but not GFP infected controls (Fig 2A) were TG3 positive. The appearance and increase of TG3 immunoreactivity directly correlated with DNA content determined using DAPI ($p < 0.00001$) (Fig 2C).

Alz50 is an antibody that is considered an early pathological marker for AD [35] and, in contrast to TG3, recognizes a higher order conformational epitope of tau [36, 39]. Less than 1% of cells were positive for Alz50 in the cultures infected with GFP adenovirus at either 2 days or 5 days post-infection (Fig 3A). In marked contrast, in ras/myc-infected cells, 5% of neurons were found to be Alz-50 positive at 2 days post-infection (data not shown), but, by 5 days, around 50% become positive (Fig 3B,C) and there was an 8-fold increase in immunoreactivity.

In summary, the coincidence of the cell cycle markers (BrdU and cyclin B1) and the appearance of key AD specific PHF antigens (TG3, Alz50) suggest that the introduction of ras/myc oncogenes into cultured neurons leads to changes in cell cycle dynamics and specific elements of AD neuropathology.

DISCUSSION

In this study, we have driven non-dividing, differentiated primary neurons into the cell cycle using adenovirus vectors carrying two powerful oncogenes, c-myc and a mutationally active ras (H-RAS61L). Expression of these oncogenes has been shown to cause fibroblasts to exit G_0 , overcome the G_1/S checkpoint and re-enter the cell cycle [34]. It was expected that this stimulus would cause an aberrant cell cycle response in the neurons and our data suggests that the oncogene-expressing neurons re-enter into the cell cycle and arrest at the G_2/M phase of the cell cycle as determined by the appearance of cyclin B1 and increased DNA replication (BrdU and DAPI). Notably, although the BrdU data suggests progression into S-phase in oncogene-infected neurons, nuclear morphology indicates that the mitotic index was not increased. Therefore, although neurons initiate DNA synthesis, they do not appear to complete mitosis, i.e, divide, consistent with our previous notion of cell cycle dysfunction [40]. Indeed, the neurons do not

show any progression from the G₂/M phenotype and prolonged culture (>5 days post infection) leads to a steady decrease in the overall DNA content and DNA condensation consistent with cell death.

The TG3 phosphoepitope of tau is present in both mitotic cells at G₂/M and NFT in AD [3, 41] and other neurodegenerative disorders [42]. In mitotic cells, the TG3 phosphoepitope appears just prior to the onset of prophase and is maximal during metaphase [3, 41]. In AD, the TG3 epitope is observed in vulnerable neurons prior to NFT formation [14]. In this report, we show that myc/ras stimulation of neuronal cultures leads to the appearance of the TG3 epitope. Of note is the observation that TG3-positive staining precedes Alz50 staining by at least 24 hours. This is not unexpected and recapitulates the temporal appearance of these antigenic markers in AD [43] and, further, suggests that formation of the Alz50 epitope, which is created by the association of two distinct regions of the tau molecule, is more complex than initiation of a mitotic event and may require secondary events [30] to produce this epitope, for example oxidative stress. Indeed, previous studies have shown that the Alz50 epitope can be created by reactive oxidative intermediates produced during neuronal oxidative stress, coincident with the induction of heme-oxygenase-1, and that the Alz50 conformation may result from oxidative damage to an already phosphorylated form of tau [44].

Although various mitotic markers are upregulated in the vulnerable neurons in AD brain, no evidence of actual mitosis has ever been found, suggesting that oncogenically-infected neurons become arrested at a point(s) prior to the actual event of cellular division. However, it is well known that once cyclin A is expressed, the arrested cells lack the ability to return to G₀ and therefore must either complete the cycle or die. Given the lack of evidence for successful completion of the cell cycle, it is likely that the re-activation of cell cycle machinery in post-

mitotic neurons leads to their death. In support of this, when a powerful oncogene, SV40 T antigen, is expressed specifically in maturing Purkinje cells in transgenic mice, the cells replicate their DNA (i.e., initiate cell cycle) but then subsequently degenerate and die [45]. Similarly, the expression of SV40 T antigen by the rhodopsin promoter causes photoreceptor degeneration, again associated with cell cycle reactivation and DNA synthesis [46].

This report represents the first, *in vitro* model for the initiation of cell-cycle mediated neurodegeneration that mimics several features of AD neurodegeneration (Fig 4). Specifically, reentry into the cell cycle is associated with DNA replication and tau phosphorylation/conformational changes. Obviously, we would anticipate that other approaches to promote cell cycle re-entry (e.g., SV40T, overexpression of CDK family member or transcription factors) would induce the same phenotype in primary neurons. In any case, the availability of the *in vitro* oncogenic model presented here will allow us to focus on early steps leading to neurodegeneration. This, in turn, might allow us to bring the large arsenal of anti-proliferative compounds developed over the last decades to bear on the problem of neurodegeneration [47].

ACKNOWLEDGMENTS

Work in the authors' laboratories is supported by the National Institutes of Health, the Alzheimer's Association, and by Philip Morris USA Inc. and Philip Morris International.

REFERENCES

- [1] K. Iqbal, T. Zaidi, C.H. Thompson, P.A. Merz and H.M. Wisniewski, Alzheimer paired helical filaments: bulk isolation, solubility, and protein composition, *Acta Neuropathol (Berl)* 62 (1984) 167-177.
- [2] I. Grundke-Iqbal, K. Iqbal, Y.C. Tung, M. Quinlan, H.M. Wisniewski and L.I. Binder, Abnormal phosphorylation of the microtubule-associated protein tau (tau) in Alzheimer cytoskeletal pathology, *Proc Natl Acad Sci U S A* 83 (1986) 4913-4917.
- [3] I. Vincent, M. Rosado and P. Davies, Mitotic mechanisms in Alzheimer's disease?, *J Cell Biol* 132 (1996) 413-425.
- [4] Z. Nagy, M.M. Esiri, A.M. Cato and A.D. Smith, Cell cycle markers in the hippocampus in Alzheimer's disease, *Acta Neuropathol (Berl)* 94 (1997) 6-15.
- [5] A. McShea, P.L. Harris, K.R. Webster, A.F. Wahl and M.A. Smith, Abnormal expression of the cell cycle regulators P16 and CDK4 in Alzheimer's disease, *Am J Pathol* 150 (1997) 1933-1939.
- [6] J.P. Brion, H. Passarier, J. Nunez and J. Flament-Durand, Immunologic determinants of tau protein are present in neurofibrillary tangles of Alzheimer's disease., *Arch Biol* 95 (1985) 229-235.
- [7] J.P. Brion, J.N. Octave and A.M. Couck, Distribution of the phosphorylated microtubule-associated protein tau in developing cortical neurons, *Neuroscience* 63 (1994) 895-909.
- [8] K. Kanemaru, K. Takio, R. Miura, K. Titani and Y. Ihara, Fetal-type phosphorylation of the tau in paired helical filaments, *J Neurochem* 58 (1992) 1667-1675.
- [9] M. Goedert, R. Jakes, R.A. Crowther, J. Six, U. Lubke, M. Vandermeeren, P. Cras, J.Q. Trojanowski and V.M. Lee, The abnormal phosphorylation of tau protein at Ser-202 in

- Alzheimer disease recapitulates phosphorylation during development, *Proc Natl Acad Sci U S A* 90 (1993) 5066-5070.
- [10] W.B. Pope, M.P. Lambert, B. Leypold, R. Seupaul, L. Sletten, G. Krafft and W.L. Klein, Microtubule-associated protein tau is hyperphosphorylated during mitosis in the human neuroblastoma cell line SH-SY5Y, *Exp Neurol* 126 (1994) 185-194.
- [11] T. Arendt, M. Holzer, A. Grossmann, D. Zedlick and M.K. Bruckner, Increased expression and subcellular translocation of the mitogen activated protein kinase kinase and mitogen-activated protein kinase in Alzheimer's disease, *Neuroscience* 68 (1995) 5-18.
- [12] T. Arendt, L. Rodel, U. Gartner and M. Holzer, Expression of the cyclin-dependent kinase inhibitor p16 in Alzheimer's disease, *Neuroreport* 7 (1996) 3047-3049.
- [13] Z. Nagy, M.M. Esiri and A.D. Smith, Expression of cell division markers in the hippocampus in Alzheimer's disease and other neurodegenerative conditions, *Acta Neuropathol (Berl)* 93 (1997) 294-300.
- [14] I. Vincent, J.H. Zheng, D.W. Dickson, Y. Kress and P. Davies, Mitotic phosphoepitopes precede paired helical filaments in Alzheimer's disease, *Neurobiol Aging* 19 (1998) 287-296.
- [15] O. Ogawa, H.G. Lee, X. Zhu, A. Raina, P.L. Harris, R.J. Castellani, G. Perry and M.A. Smith, Increased p27, an essential component of cell cycle control, in Alzheimer's disease, *Aging Cell* 2 (2003) 105-110.
- [16] O. Ogawa, X. Zhu, H.G. Lee, A. Raina, M.E. Obrenovich, R. Bowser, H.A. Ghanbari, R.J. Castellani, G. Perry and M.A. Smith, Ectopic localization of phosphorylated histone

- H3 in Alzheimer's disease: a mitotic catastrophe?, *Acta Neuropathol (Berl)* 105 (2003) 524-528.
- [17] X. Zhu, A.K. Raina, H. Boux, Z.L. Simmons, A. Takeda and M.A. Smith, Activation of oncogenic pathways in degenerating neurons in Alzheimer disease, *Int J Dev Neurosci* 18 (2000) 433-437.
- [18] X. Zhu, C.A. Rottkamp, H. Boux, A. Takeda, G. Perry and M.A. Smith, Activation of p38 kinase links tau phosphorylation, oxidative stress, and cell cycle-related events in Alzheimer disease, *J Neuropathol Exp Neurol* 59 (2000) 880-888.
- [19] X. Zhu, C.A. Rottkamp, A.K. Raina, G.J. Brewer, H.A. Ghanbari, H. Boux and M.A. Smith, Neuronal CDK7 in hippocampus is related to aging and Alzheimer disease, *Neurobiol Aging* 21 (2000) 807-813.
- [20] T.W. Smith and C.F. Lippa, Ki-67 immunoreactivity in Alzheimer's disease and other neurodegenerative disorders, *J Neuropathol Exp Neurol* 54 (1995) 297-303.
- [21] T. Arendt, M. Holzer and U. Gartner, Neuronal expression of cyclin dependent kinase inhibitors of the INK4 family in Alzheimer's disease, *J Neural Transm* 105 (1998) 949-960.
- [22] I. Vincent, G. Jicha, M. Rosado and D.W. Dickson, Aberrant expression of mitotic cdc2/cyclin B1 kinase in degenerating neurons of Alzheimer's disease brain, *J Neurosci* 17 (1997) 3588-3598.
- [23] A. McShea, A.F. Wahl and M.A. Smith, Re-entry into the cell cycle: a mechanism for neurodegeneration in Alzheimer disease, *Med Hypotheses* 52 (1999) 525-527.
- [24] A. McShea, D.A. Zelasko, J.L. Gerst and M.A. Smith, Signal transduction abnormalities in Alzheimer's disease: evidence of a pathogenic stimuli, *Brain Res* 815 (1999) 237-242.

- [25] A.K. Raina, M.J. Monteiro, A. McShea and M.A. Smith, The role of cell cycle-mediated events in Alzheimer's disease, *Int J Exp Pathol* 80 (1999) 71-76.
- [26] A.K. Raina, A. Takeda and M.A. Smith, Mitotic neurons: a dogma succumbs, *Exp Neurol* 159 (1999) 248-249.
- [27] A.K. Raina, X. Zhu, M. Monteiro, A. Takeda and M.A. Smith, Abortive oncogeny and cell cycle-mediated events in Alzheimer disease, *Prog Cell Cycle Res* 4 (2000) 235-242.
- [28] A.K. Raina, X. Zhu, C.A. Rottkamp, M. Monteiro, A. Takeda and M.A. Smith, Cyclin' toward dementia: cell cycle abnormalities and abortive oncogenesis in Alzheimer disease, *J Neurosci Res* 61 (2000) 128-133.
- [29] X. Zhu, A.K. Raina and M.A. Smith, Cell cycle events in neurons. Proliferation or death?, *Am J Pathol* 155 (1999) 327-329.
- [30] X. Zhu, A.K. Raina, G. Perry and M.A. Smith, Alzheimer's disease: the two-hit hypothesis, *Lancet Neurol* 3 (2004) 219-226.
- [31] X. Zhu, A. McShea, P.L. Harris, A.K. Raina, R.J. Castellani, J.O. Funk, S. Shah, C. Atwood, R. Bowen, R. Bowser, L. Morelli, G. Perry and M.A. Smith, Elevated expression of a regulator of the G2/M phase of the cell cycle, neuronal CIP-1-associated regulator of cyclin B, in Alzheimer's disease, *J Neurosci Res* 75 (2004) 698-703.
- [32] Y. Yang, D.S. Geldmacher and K. Herrup, DNA replication precedes neuronal cell death in Alzheimer's disease, *J Neurosci* 21 (2001) 2661-2668.
- [33] C.A. Singer, X.A. Figueroa-Masot, R.H. Batchelor and D.M. Dorsa, The mitogen-activated protein kinase pathway mediates estrogen neuroprotection after glutamate toxicity in primary cortical neurons, *J Neurosci* 19 (1999) 2455-2463.

- [34] G. Leone, J. DeGregori, R. Sears, L. Jakoi and J.R. Nevins, Myc and Ras collaborate in inducing accumulation of active cyclin E/Cdk2 and E2F, *Nature* 387 (1997) 422-426.
- [35] K.S. Kosik, N.W. Kowall and A. McKee, Along the way to a neurofibrillary tangle: a look at the structure of tau, *Ann Med* 21 (1989) 109-112.
- [36] G.A. Jicha, B. Berenfeld and P. Davies, Sequence requirements for formation of conformational variants of tau similar to those found in Alzheimer's disease, *J Neurosci Res* 55 (1999) 713-723.
- [37] M. Holm, M. Thomsen, M. Hoyer and P. Hokland, Optimization of a flow cytometric method for the simultaneous measurement of cell surface antigen, DNA content, and in vitro BrdUrd incorporation into normal and malignant hematopoietic cells, *Cytometry* 32 (1998) 28-36.
- [38] G.J. Brewer, J.R. Torricelli, E.K. Evege and P.J. Price, Optimized survival of hippocampal neurons in B27-supplemented Neurobasal, a new serum-free medium combination, *J Neurosci Res* 35 (1993) 567-576.
- [39] G. Carmel, E.M. Mager, L.I. Binder and J. Kuret, The structural basis of monoclonal antibody Alz50's selectivity for Alzheimer's disease pathology, *J Biol Chem* 271 (1996) 32789-32795.
- [40] R. Bowser and M.A. Smith, Cell cycle proteins in Alzheimer's disease: plenty of wheels but no cycle, *J Alzheimers Dis* 4 (2002) 249-254.
- [41] A. Dranovsky, I. Vincent, L. Gregori, A. Schwarzman, D. Colflesh, J. Enghild, W. Strittmatter, P. Davies and D. Goldgaber, Cdc2 phosphorylation of nucleolin demarcates mitotic stages and Alzheimer's disease pathology, *Neurobiol Aging* 22 (2001) 517-528.

- [42] J.W. Husseman, D. Nochlin and I. Vincent, Mitotic activation: a convergent mechanism for a cohort of neurodegenerative diseases, *Neurobiol Aging* 21 (2000) 815-828.
- [43] C.L. Weaver, M. Espinoza, Y. Kress and P. Davies, Conformational change as one of the earliest alterations of tau in Alzheimer's disease, *Neurobiol Aging* 21 (2000) 719-727.
- [44] A. Takeda, M.A. Smith, J. Avila, A. Nunomura, S.L. Siedlak, X. Zhu, G. Perry and L.M. Sayre, In Alzheimer's disease, heme oxygenase is coincident with Alz50, an epitope of tau induced by 4-hydroxy-2-nonenal modification, *J Neurochem* 75 (2000) 1234-1241.
- [45] R.M. Feddersen, H.B. Clark, W.S. Yunis and H.T. Orr, In vivo viability of postmitotic Purkinje neurons requires pRb family member function, *Mol Cell Neurosci* 6 (1995) 153-167.
- [46] M.R. al-Ubaidi, J.G. Hollyfield, P.A. Overbeek and W. Baehr, Photoreceptor degeneration induced by the expression of simian virus 40 large tumor antigen in the retina of transgenic mice, *Proc Natl Acad Sci U S A* 89 (1992) 1194-1198.
- [47] J. Woods, M. Snape and M.A. Smith, The cell cycle hypothesis of Alzheimer's disease: Suggestions for drug development, *Biochim Biophys Acta* (2006) in press.

FIGURE LEGENDS

Figure 1. Cell cycle re-entry in ras/myc adenoviruses infected primary cortical neurons. (A) BrdU incorporation (red) in primary cortical neurons infected with either control GFP or ras/myc containing adenoviruses. Quantification (B) shows a significant increase in BrdU incorporation in ras/myc-infected cells ($p < 0.001$) over GFP-infected cells. Cyclin B1 (red) is only expressed in ras/myc-infected cells (C) along with a significant concomitant increase in DNA ($p < 0.001$) (D), visualized with DAPI (blue).

Figure 2. Increased phospho-tau expression in ras/myc adenoviruses-infected primary cortical neurons. Phospho-tau, detected with antibody TG3 (red), is expressed in cell infected with ras/myc (B) and not in GFP-infected cells (A) after 2 days post-infection. DNA content visualized with DAPI (blue) shows significant positive correlation with TG3 epitope expression ($p < 0.00001$) (C).

Figure 3. Conformational change of tau protein by ras/myc adenoviruses infection in primary cortical neurons. Alz50 antibody staining (red) in primary cortical neurons infected with either control GFP (green) adenovirus (A) or ras/myc (B) for 5 days and stained with DAPI (blue). There is over an 8-fold increase of Alz50 epitope expression from day 2 to day 5 (C).

Figure 4. Schematic representation of possible stages of the cell cycle and tau expression. Cell cycle re-entry (i.e., G_0 to G_1/S and beyond) is associated with tau phosphorylation and oxidative stress. Unable to enter mitosis, cells enter “phase stasis” and further conformational changes in tau result.

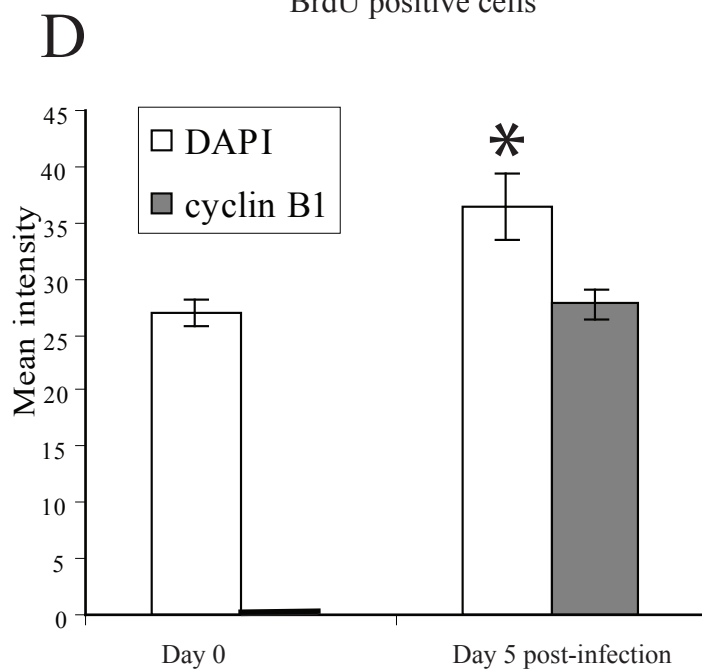
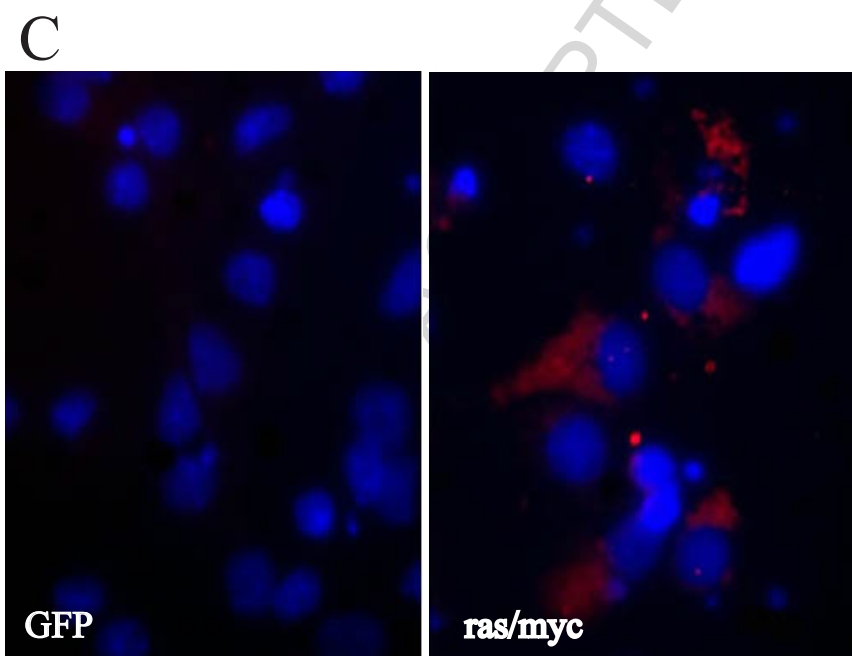
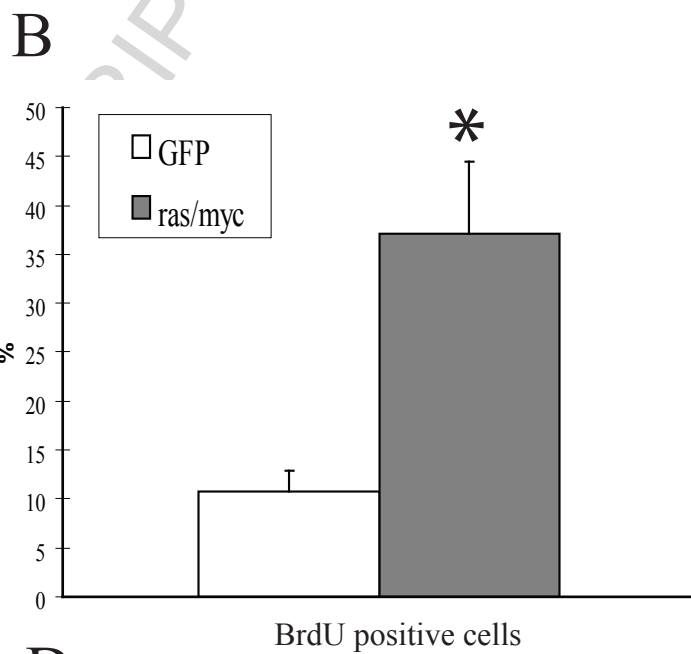
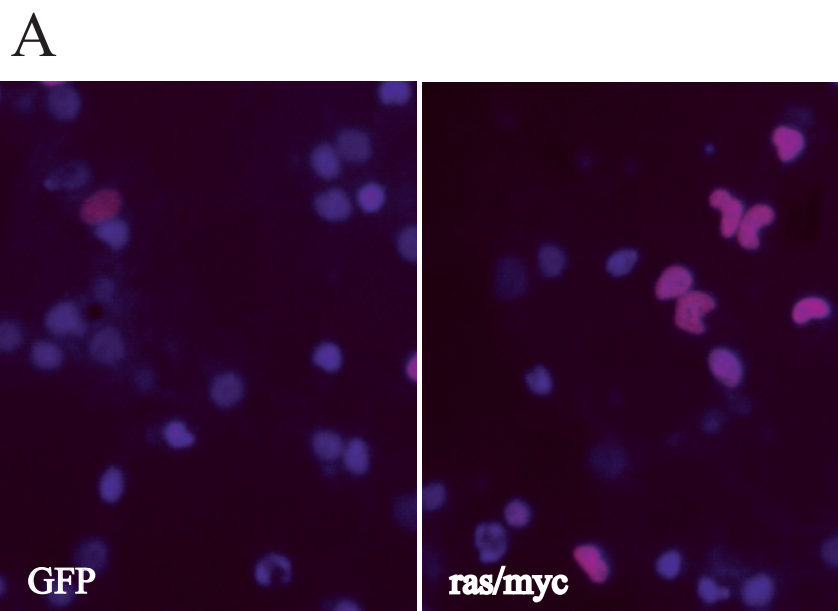


Figure 1

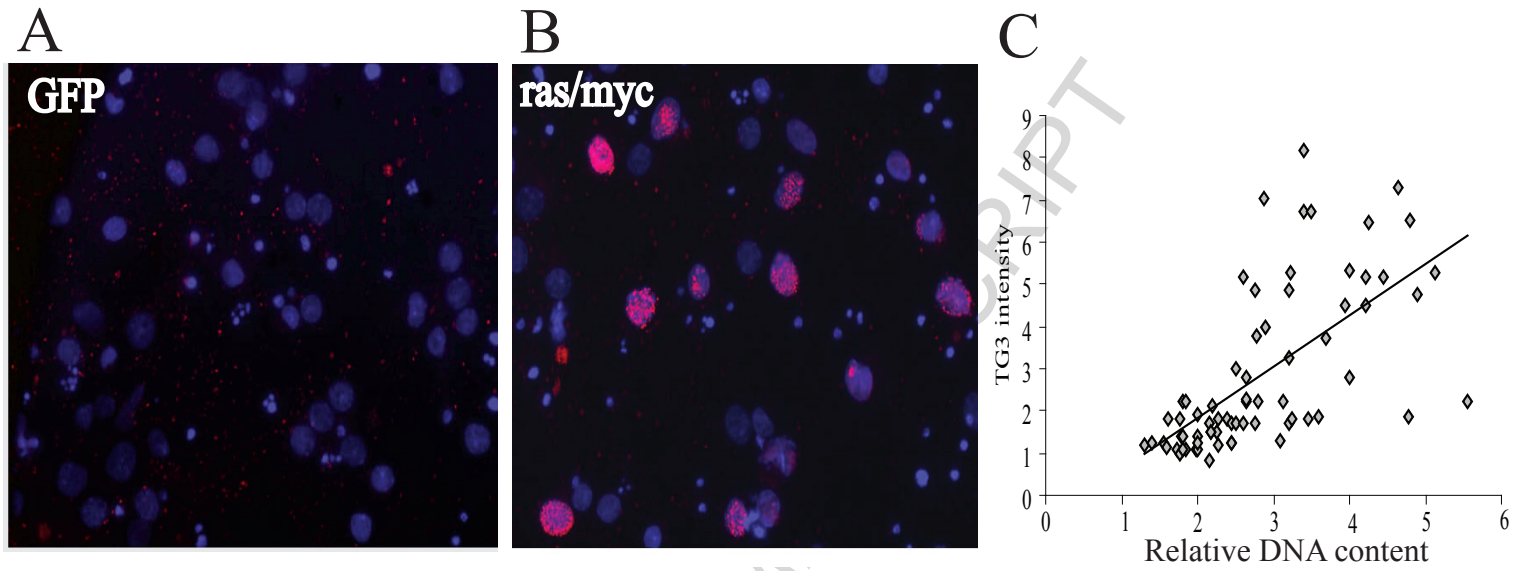


Figure 2

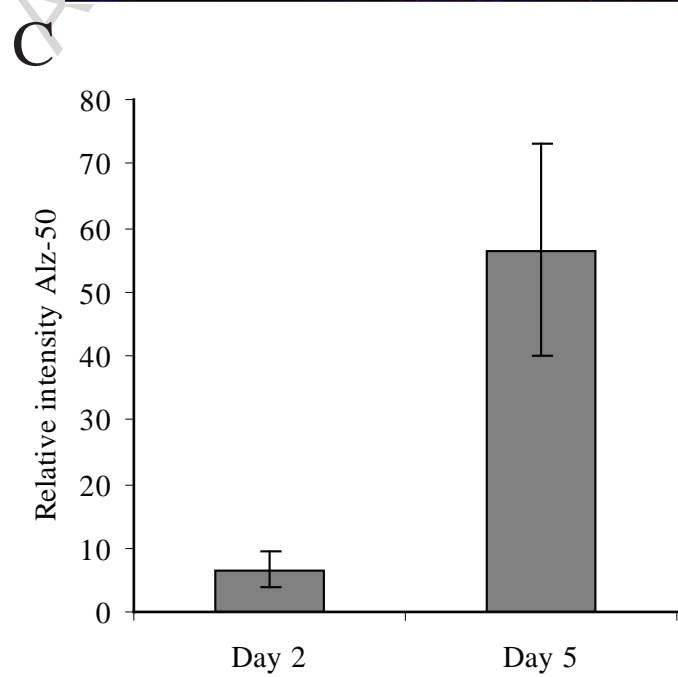
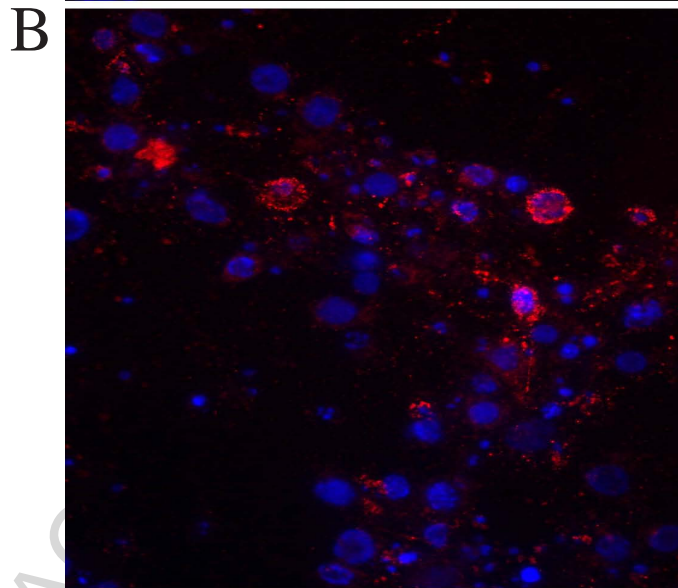
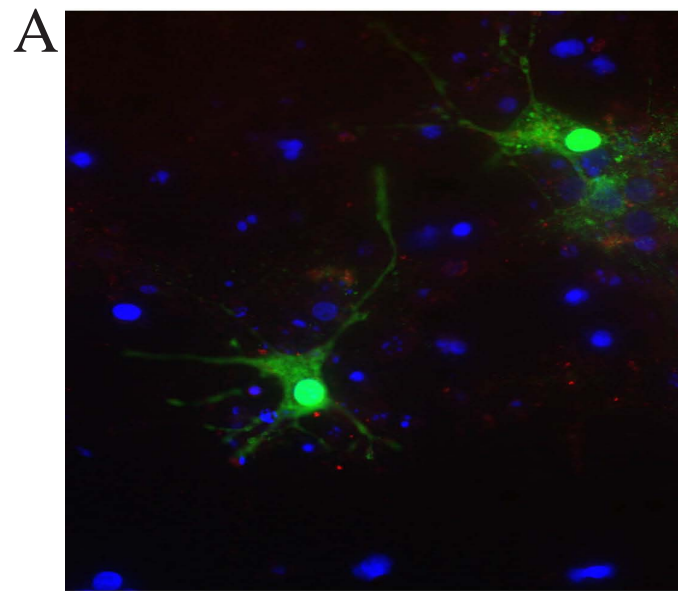


Figure 3

