



HAL
open science

Streptococcal pyrogenic exotoxin B (SpeB) boosts the contact system via binding of alpha-1 antitrypsin

Louise Meinert Niclasen, Johan G. Olsen, Robert Dagil, Zhang Qing, Ole E Sørensen, Birthe B. Kragelund

► **To cite this version:**

Louise Meinert Niclasen, Johan G. Olsen, Robert Dagil, Zhang Qing, Ole E Sørensen, et al.. Streptococcal pyrogenic exotoxin B (SpeB) boosts the contact system via binding of alpha-1 antitrypsin. *Biochemical Journal*, 2011, 434 (1), pp.123-132. <10.1042/BJ20100984>. <hal-00560689>

HAL Id: hal-00560689

<https://hal.science/hal-00560689v1>

Submitted on 29 Jan 2011

HAL is a multi-disciplinary open access archive for the deposit and dissemination of scientific research documents, whether they are published or not. The documents may come from teaching and research institutions in France or abroad, or from public or private research centers.

L'archive ouverte pluridisciplinaire **HAL**, est destinée au dépôt et à la diffusion de documents scientifiques de niveau recherche, publiés ou non, émanant des établissements d'enseignement et de recherche français ou étrangers, des laboratoires publics ou privés.



HAL Authorization

Streptococcal pyrogenic exotoxin B (SpeB) boosts the contact system via binding of alpha-1 antitrypsin

Louise Meinert Niclasen¹, Johan G. Olsen¹, Robert Dagil¹, Zhang Qing², Ole E. Sørensen^{2*}, Birthe B. Kragelund^{1*}

¹University of Copenhagen, Department of Biology, Structural Biology and NMR Laboratory, Ole Maaloes Vej 5, DK-2200 Copenhagen N, Denmark

²Lund University, Department of Clinical Sciences, Division of Infection Medicine, BMC, B14, Tornavägen 10, SE-221 84 Lund, Sweden

*Corresponding authors

E-mail: bbk@bio.ku.dk

E-mail: Ole_E.Sorensen@med.lu.se

Short (page heading) running title: SpeB enhances bacterial killing

SYNOPSIS

The *Streptococcus pyogenes* cysteine protease, SpeB, is important for the invasive potential of the bacteria, but its production is down-regulated following systemic infection. This prompted us to investigate if SpeB potentiated the host immune response after systemic spreading. Addition of SpeB to human plasma increased plasma-mediated bacterial killing and prolonged coagulation time through the intrinsic pathway of coagulation. This effect was independent of the enzymatic activity of SpeB and was mediated by a non-covalent medium-affinity binding and modification of the serpin alpha-1 antitrypsin. Consequently, supplement of alpha-1 antitrypsin to plasma increased bacterial survival. Sequestration of alpha-1 antitrypsin by SpeB led to enhanced contact system activation, supported by increased bacterial growth in prekallikrein deficient plasma. In a mouse model of systemic infection administration of SpeB significantly reduced bacterial dissemination. The findings reveal an additional layer of complexity to host-microbe interactions which may be of benefit in treatment of severe bacterial infections.

Keywords: dissemination, innate immune system, photo cross-linking, *Streptococcus pyogenes*, systemic spreading

INTRODUCTION

The *Group A Streptococci (GAS) Streptococcus Pyogenes* is a common bacterial pathogen. For the past two decades, several studies have reported an increase in the severity and the incidence of GAS infections in humans [1]. In addition to infections of the upper respiratory tract and the skin, GAS causes a wide variety of invasive systemic infections, with two potentially serious complications: acute rheumatic fever and acute glomerulonephritis [2, 3]. Recently, infection with GAS has reemerged as an important cause of toxic shock syndrome, as well as life-threatening skin and soft tissue infections, especially necrotizing fasciitis due to a phenotypic shift to a more invasive phenotype [4]. Due to cases of rapidly progressive disease with untreatable outcome, this pathogen remains a major concern [1].

GAS owes its fundamental success as a pathogen to its ability to colonize and rapidly multiply and spread in its host while evading phagocytosis and circumventing the immune system [5, 6]. The membrane of GAS contains antigens similar to those of mammalian muscle and connective tissue [7-9] which provides a molecular mimicry that results in a corresponding tolerant or even suppressed immune response by the host. In combination with the actions of various virulence factors, GAS has the ability to evade the immune system. One of these factors is the cysteine protease streptococcal pyrogenic exotoxin B (SpeB). During infection it degrades a range of proteins important for the immune response of the host such as immunoglobulins and antimicrobial (or host defense) peptides as well as integrins [10-12].

SpeB is secreted by the pathogen as an extracellular zymogen with a molecular weight of 40 kDa. Through limited proteolysis the zymogen can be converted into the active, mature enzyme (mSpeB) by removal of the 118 N-terminal residues [13]. The three-dimensional structure of an inactive mutant form of the zymogen has been solved [14] and has revealed the protease to belong to the papain-like family of cysteine proteases. Recently two structures of the mature enzyme, mSpeB, were solved, one in a monomeric, inactive state [15] and one with a bound inhibitor revealing a dimeric active conformation [16].

Although several regulators of SpeB transcription are reported, i.e. CovR, Vfr and RopB [17-19], the regulation of SpeB gene expression is complex and incompletely understood. SpeB causes increased severity and spreading of GAS infection in mouse models and it is apparent that the bacterial protease SpeB is mandatory for the initial invasion process [20-22]. The fact that SpeB is down-regulated after systemic spreading [23] suggests that its presence after invasion may hamper or even inhibit the survival of the bacteria in the host. Indeed, an exposure to human blood or inflammatory fluid from skin chambers lead to decreased expression of SpeB [24, 25].

In this study we found that human plasma severely affected SpeB production in *S. pyogenes*. Addition of purified, enzymatically inactive mature SpeB caused increased bacterial killing in human plasma. This increased killing was mediated by the binding of SpeB to alpha-1-antitrypsin (A1AT) that consequently led to increased activity of an *a priori* activated contact system-mediated bacterial killing. These findings were corroborated in a mouse model of systemic infection where inter-peritoneal administration of SpeB significantly decreased bacterial dissemination *in vivo*.

MATERIALS AND METHODS

Bacteria and culturing conditions

The *S. Pyogenes* strain AP1 of serotype M1 strain 40/58 was obtained from the World Health Organization Collaborating Centre for Reference and Research on Streptococci, Prague, Czech Republic. The *S. Pyogenes* strain Alab49 was provided by Debra E. Messen, New York Medical College. Bacteria were grown in Todd-Hewitt broth (BD Biosciences) in 5% (v/v) CO₂ at 37°C with added yeast extract.

Purification of SpeB

For purification of mSpeB, the *S. pyogenes* strain Alab49 was grown for 48-60 hours in Todd-Hewitt broth (BD Biosciences) with 0.2% (w/w) yeast extract (Difco) in 5% (v/v) CO₂ at 37°C. The bacteria were pelleted by centrifugation at 3000 x g for 20 min at 4°C and the supernatant sterile filtered. The filtrate was subjected to ammonium sulfate precipitation (80% (w/v)). The resulting pellet was dissolved in MilliQ water to a volume of 50 ml and subjected to dialysis O/N at 4°C against 20 mM sodium acetate buffer pH 5. The protein sample was centrifuged at 20000 x g for 20 min at 4°C and the supernatant applied to a 5 ml HiTrap SP FF anion exchange column (GE Healthcare) equilibrated in 20 mM sodium acetate pH 5. The protein was eluted with 0-2 M NaCl in a gradient over 20 column volumes (CV) and eluted at 0.15 M NaCl at a flow of 5 ml/min. The eluted protein was further purified on a G75 Sephadex gelfiltration column (1.6x86cm) using a 20 mM sodium acetate, 150 mM NaCl buffer pH 5. The protein eluted after 90 ml at a flow of 0.5 ml/min. When produced natively, mSpeB is inhibited by E64 originating from the growth media and the inhibitor is covalently attached to the active site cysteine [16].

Fractionation of human citrate plasma

An aliquot of 30 ml of human citrate plasma received from the blood bank at Rigshospitalet, Copenhagen, Denmark, was subjected to gel filtration at 4°C on a G200 Sephadex column (5x70cm) with a bed volume of 1374 mL using a PBS buffer, pH 7.4.

The plasma proteins were collected in four different pools according to protein size (denoted plasma pool 1-4).

In vitro infection assay

For the antibacterial assay AP1 bacteria were grown O/N in TH medium in 5% (v/v) CO₂ at 37°C. The bacteria were subsequently diluted to A₆₂₀ = 0.5 in TH-medium, plasma or plasma with added *trans*-Epoxy succinyl-L-leucylamido (4-guanidino) butane (E64) inhibited (10 μM) mSpeB or equal amounts of PBS (v/v) or with added A1AT (0.64 mg/ml). Freshly frozen plasma from healthy individuals was obtained from the blood bank at Lund University Hospital, Lund, Sweden, and kept frozen at -80°C until use. The *in vitro* infection assay was also performed in plasma deficient in contact factors obtained from King George Hospital and with the addition of A1AT (8 μl of 20 mg/ml added to a total of 253 μl; [A1AT]_{final} = 14 μM). At different time points, growth was measured by plating appropriate dilutions of the bacterial suspension on TH agar plates. Plates were incubated overnight in 5% (v/v) CO₂ at 37°C and the number of CFU was determined by counting the number of formed colonies. To maintain proper growth of the bacteria when performing the antibacterial assay with the plasma pools obtained from gel filtration of whole plasma, 50 μl 5xTHY-media was added to each reaction (total volume 250 μl).

Chemical cross-linking and protein identification

Chemical cross-linking was performed using ProFound Label Transfer sulfosuccinimidyl-2-[6-(biotinamido)-2-(p-azidobenzamido)-hexanoamido]-ethyl-1,3'-dithiopropionate (SBED) protein-protein interaction reagent (Pierce Biotechnology). All steps were performed in the dark. In a volume of 0.3 mL, 0.19 mM mSpeB and 1.9 mM sulfo-SBED (dissolved initially in DMSO) were incubated in the dark at room temperature for 30 min with continuous rotation. The reaction mixture was dialyzed against 0.5 L of 50 mM HEPES, 150 mM NaCl pH 7.4 O/N in the dark at 4°C. After dialysis the sample was mixed directly with the different prey proteins in a minimum of ten excess volumes for 60 min followed by photolysis at 365 nm for 30 min.

Cross-linked samples were analyzed by SDS-PAGE on 15% (v/v) Tris-Glycin gels (Lonza) under reducing (100 mM dithiothreitol) and non-reducing conditions. Detection of biotinylated samples was performed by Western blotting using horseradish peroxidase (HRP)-labeled streptavidin diluted 1:5000. The band corresponding to the positive Western signal was excised from an identical, but silver stained SDS-PAGE gel and protein identification performed by trypsin digestion followed by mass spectrometry at Alphalyse A/S (Denmark). A1AT was obtained from Cell Sciences to a purity of >95% and using the procedure above, analyzed by Western blot.

Clotting assay

Coagulation time of human citrate plasma was determined in an Amelung KC4A micro coagulometer. An aliquot of 100 μl of untreated human citrated plasma (from the blood bank at Lund University Hospital, Lund, Sweden) was incubated with mSpeB at varying concentrations (from 0 to 18 μM) for 1 hour at RT. To analyze the intrinsic pathway of coagulation, 50 μl of a kaolin-solution (Technoclone) was added to the incubated sample, pre-heated for 60 s at 37°C and clotting initiated by adding 50 μl of a 30 mM CaCl_2 solution. To analyze the extrinsic pathway of coagulation 100 μL Thrombomax with calcium (PT reagent; Sigma-Aldrich) was added to 300 μL of pre-heated plasma.

Determination of K_d using fluorescence spectroscopy

The interaction between mSpeB and A1AT was investigated using fluorescence spectroscopy measuring emission at 305–400 nm with excitation at either 280 nm or 296 nm. Throughout the experiment E64 inhibited mSpeB was used. An emission spectrum of a 10 μM mSpeB sample was recorded and added to each recorded spectrum on a series of A1AT samples with varying concentration from 0–100 μM . The emission spectra for the same series of concentrations of A1AT now in complex with 10 μM mSpeB were also recorded. All spectra were recorded in PBS buffer pH 7.4 at RT. The summed emission spectrum of 10 μM mSpeB and a varied amount of A1AT were compared to the emission spectrum of the corresponding sample of the complex. The differences between these two spectra ($f_{280\text{nm}}[\text{A1AT:mSpeB}]_{\text{cplx}} - f_{280\text{nm}}[\text{mSpeB+A1AT}]_{\text{summed}}$) were plotted against the concentration of A1AT. The dissociation constant, K_d , between A1AT and mSpeB was determined from non-linear least squares fitting to the following equation describing one single binding site ($Y = (\text{Bmax} * x)/(\text{K}_d + x)$) using GraphPad Prism 4 [26].

*Systemic *S. pyogenes* infection in mice*

The systemic spread of bacteria *in vivo* was investigated using a mouse model of intraperitoneal infection. A total of 24 male Balb/C mice 8–11 weeks of age were injected i.p. with *S. pyogenes* AP1 bacteria (1×10^6 CFU), followed by i.p. injection of an equal volume of either PBS with added E64 ($n = 12$) or of 50 $\mu\text{g}/\text{animal}$ E64 inhibited mSpeB ($n = 12$). The mice were sacrificed 18 hours after the last injection. The spleen was excised and the total number of CFU in the spleen determined by serial dilution on blood agar plates. The P-value was determined using the two-tailed paired t-test.

Stimulation of mononuclear cells (lymphocytes and monocytes)

Blood was collected from a healthy volunteer. After sedimentation with 2% Dextran T-500 (Amersham Pharmacia Biotech, Uppsala, Sweden) in isotonic NaCl, the leukocyte-rich supernatant was pelleted and resuspended in saline for subsequent centrifugation on Lymphoprep (Nycomed Pharma A/S, Oslo, Norway) at 400 $\times g$ for 30 minutes. The

mononuclear cells were collected in the supernatant following centrifugation. The cells were washed twice in sterile 0.9% NaCl and resuspended in Iscove's Modified Dulbecco's Medium (Invitrogen, Carlsbad, CA) with 10% autologous serum and antibiotic-antimycotic solution (Invitrogen). The cells were stimulated using 10 µg/ml peptidoglycan (Sigma) or 10 µg/ml E64 inhibited mSpeB. Medium was harvested after four days. IL-8 secretion was examined by Western Blots and IL-6 secretion by IL-6 ELISA (R&D Systems).

Isolation of polymorphonuclear neutrophils (PMN)

PMN were isolated at 4°C from blood from healthy donors using gradient centrifugation [27]. EDTA-stabilized whole blood (5 mL) was placed on 3 mL Polymorfprep (Nycomed A/S, Oslo, Norway) and centrifuged for 35 min at 400 × g. The granulocyte layer was harvested and resuspended in Hanks' Buffered Salt Solution (HBSS) (Gibco, Life Technologies Inc., Rockville, MD), washed three times and centrifuged for 7 min at 200 × g. PMN were then resuspended (2.0×10^6 cells/mL) in HBSS with 0.2% HSA (Behring, Marburg, Germany).

Chemotaxis

Neutrophil chemotaxis was assessed as previously described (Nybo et al., 1998). Briefly, a 48 well microchemotaxis chamber (NeuroProbe Inc., Gaithersburg, MD) with 3 µm Millipore filters, type SS (Millipore Corp., Billerica, MA), was used. SpeB (2 µg/ml and 0.4 µg/ml) was tested as chemoattractant with N-formyl-methionyl-leucyl-phenylalanine (fMLP) (10^{-8} mol/L) as a positive chemoattractant control. PMN were placed in the microchemotaxis chamber for 30 min at 37 °C, and directed migration was subsequently measured by the leading-front principle (Zigmond and Hirsch, 1972) with three cells per high power field. Three fields were read per well, and all samples were assayed in duplicate. All migration distances were subtracted the spontaneous migration measured in non-stimulated PMN and expressed as µm per 30 min.

RESULTS

Systemic spreading of bacteria from sites of entry requires invasion into blood circulation. It was previously found that exposure to inflammatory tissue fluids and blood down-regulated the expression of SpeB from bacteria *in vitro* [28]. Consequently, we investigated the effect of human plasma on SpeB production from *S. pyogenes*. Bacteria were grown to stationary phase (overnight) in THY media with or without addition of human plasma. In contrast to whole human plasma [29], 20% plasma in THY medium did not inhibit bacterial growth compared to growth in THY medium alone as judged from OD measurements. Accordingly, both bacteria in THY and THY

with 20% plasma had reached stationary phase after over night culture. After OD-normalization, mSpeB production/secretion were investigated by Western blot (Figure 1). No SpeB could be detected in the growth medium when the bacteria were exposed to plasma. Similar results were found when bacteria were grown in the presence of the covalently linked cysteine protease inhibitor E64, showing that the plasma dependent down-regulation was independent of the enzymatic activity of SpeB. Control experiments demonstrated further that incubation of mSpeB in 20% (v/v) plasma for 24 hours at 37°C did not cause degradation of the protein (data not shown). Accordingly, exposure to plasma inhibits SpeB production by *S. pyogenes*.

mSpeB mediates decreased bacterial proliferation in human plasma *in vitro*

Whole human plasma impairs the growth of *S. pyogenes* as a result of activation of the contact system resulting in decreased bacterial dissemination *in vivo* [29]. Accordingly, we tested whether the mature form of SpeB (mSpeB) influenced the survival of *S. pyogenes* in whole human plasma. The addition of E64-inhibited mSpeB significantly reduced the growth of *S. pyogenes* strain AP1 ($p < 0.05$) in human plasma (Figure 2(A)) compared to growth in plasma without mSpeB. No effect of E64-inhibited mSpeB was seen on growth in TH medium alone. To eliminate a possible dilution effect on growth an equal volume of PBS buffer was added to plasma. This had no influence on the bacterial growth rate (data not shown). Likewise, the effect of the inhibitor E64 on bacterial growth was evaluated. Neither in the presence or absence of 20% (v/v) plasma did E-64 inhibit bacterial growth (data not shown).

To explore if the antibacterial effect was mediated by the contact system as noted before [30], the influence of E64-inhibited mSpeB on bacterial growth in kallikrein deficient plasma was investigated. Normally during activation of the contact system kallikrein degrades high molecular weight kininogen (HMWK) which results in liberation of antimicrobial peptides [29]. Addition of E64-inhibited mSpeB to prekallikrein deficient plasma did not reduce bacterial growth (Figure 2(B)). Thus, the effect of E64-inhibited mSpeB on bacterial killing in plasma was mediated via the contact system of the host.

SpeB binds to A1AT in human plasma

To identify any possible components in human plasma that could be responsible for mediating the mSpeB antibacterial effect, citrate plasma was fractionated by size exclusion chromatography and collected in four pools in PBS (pH 7.4). These four pools (denoted pools 1-4) as well as double-combinations thereof were all tested for their effect on the growth of the *S. pyogenes* strain AP1 with and without addition of E64-inhibited mSpeB (Figure 3).

Growth inhibition studies using the four pools without addition of mSpeB showed that they all inhibited growth to some extent compared to growth in TH. The inhibitory potential of pool 4 was the weakest and pool 1 the strongest (Figure 3A). E64-inhibited mSpeB had no effect on growth by itself (TH *vs* TH+mSpeB, pool 1, 2 and 3), but had a significant negative effect in combination with whole plasma as well as in combination with pool 4. No significant effect of mSpeB was observed when added to pool 1. Interestingly, the inhibitory effect of pool 1 alone is larger than the sum of the inhibitory potential of the individual pools. This indicates that there must be a combined effect such that the inhibitory effect of pool 1 is moderated by proteins in one of the other pools (cross-pool interaction and/or common growth inhibiting targets)

From these data we hypothesized the presence of an inhibitor of a growth inhibitory factor in plasma and that this inhibitor could be impeded by E64-mSpeB resulting in reduced growth. Therefore, the effect on growth of *S. pyogenes* in the presence of different combinations of pools 1 - 4 with and without the addition of E64-mSpeB was tested. From these studies it was seen that Pool 4 contained the factor(s) suppressing the growth inhibitory strength of pool 1 while E64-mSpeB, at least in part, abolished this suppression (pool (1+4) *vs* pool (1+4) + mSpeB).

Obviously, many plasma factors influence bacterial growth in a much more complex manner than delineated here. Therefore, to pin-point the role of mSpeB in growth inhibition, an experiment to detect possible mSpeB interaction partners was performed. mSpeB was coupled to the chemical photo cross-linker sulfosuccinimidyl-2-[6-(biotinamido)-2-(p-azidobenzamido)-hexanoamido]-ethyl-1,3'-dithiopropionate (SBED). This chemical cross-linker connects by photolysis mSpeB covalently to the interacting molecule and the complex is detectable via a biotin label. Under reducing conditions, the linker is broken and the biotin label stays attached to the interacting molecule. Based on the antibacterial assay, proteins of plasma pool 4 were initially used as prey proteins. Following chemical labeling and photo cross-linking the subsequent Western blot analysis only revealed a single interaction partner (Figure 4(A)). To confirm that only one protein in human plasma interacted with mSpeB and rule out any interaction partners not present in pool 4, the same cross-linking experiment was performed with whole human plasma. This experiment resulted in the presence of two bands on a Western blot (Figure 4(B), lane 1 and 2), demonstrating a high level of specificity of the interaction. The upper (major) band corresponded in size to the observed pool 4 band.

In order to test whether the interaction between the two proteins was a result of the chemical nature of the photo cross-linker itself, the intrinsically disordered yeast protein Spd1 [31] was SBED-labeled and incubated with plasma. No bands appeared on the resulting Western blot and no interaction had been mediated solely by the cross-

linker confirming that it was not the label itself that was responsible for the affinity of SpeB for the observed interaction partner (Figure 4(B), lane 3).

Analysis of the protein located in the band on the gel corresponding to the positive Western band from pool 4 resulted in identification by trypsin-MS-analysis of two proteins, human albumin and alpha-1 antitrypsin (A1AT). For albumin the sequence coverage was 37%. For A1AT the protein identification revealed an overall sequence coverage of 49%, covering both the N- and C-terminal ends of the protein as well as the central part. Albumin and A1AT are known to co-migrate on SDS-PAGE [32], so it is likely that the complexes superpose on the gel. Albumin is an abundant plasma protein that interacts with a broad spectrum of endogenous compounds [33]. Furthermore, albumin is a known substrate of SpeB [34]. Since the sequence identification of A1AT also comprised the C-terminal part, A1AT was not necessarily interacting with SpeB in a suicidal mechanism which normally leads to cleavage of the C-terminal part of A1AT.

Interactions with albumin and A1AT were both confirmed by cross-linking of the SBED-labeled mSpeB to isolated, commercially obtained proteins. Western blot analysis of A1AT pre-incubated with SBED-labeled mSpeB resulted in a dominant high intensity band at 50 kDa as well as a lower intensity band at 40 kDa (Figure 4(C)). Albumin interaction was confirmed by the same method (data not shown). The low intensity band of A1AT corresponded in size to cleaved A1AT which was shown to be present in the commercial preparation. Consequently, mSpeB interacted with intact as well as activated (and cleaved) A1AT.

mSpeB binds A1AT non-covalently

Normally when A1AT binds its substrate a cleavage of the C-terminal tail of A1AT occurs and a covalent bond is formed between A1AT and its substrate [35, 36]. To evaluate the nature of the interaction between A1AT and mSpeB, A1AT was incubated with E64-inhibited mSpeB and analyzed by non-reducing SDS-PAGE (Figure 5). In clear contrast to the canonical inhibition mechanism reported for A1AT, no covalent bond formation between A1AT and mSpeB could be observed. Instead, when a similar experiment was performed with active, uninhibited mSpeB, A1AT was cleaved to a size comparable to that observed in the Western blot analysis of whole human plasma (Figure 5). No high molecular weight band was observed indicating that A1AT did not bind covalently to SpeB neither in the active nor in the E64 inhibited state. As a control experiment A1AT was incubated with trypsin where a covalent band was clearly formed (Figure 5). Thus, since both the intact and the cleaved form of A1AT interacted with E64-inhibited mSpeB the binding of A1AT to mSpeB occurs independently of the enzymatic activity of either protein. This suggests that the mechanism of interaction between the cysteine protease mSpeB and the suicidal protease inhibitor, A1AT appears to be strikingly different to what has been observed so far for most A1AT targets.

Rather this complex may be related more to the alpha-1-PI-Pittsburg and S195A trypsin complex [37] and as such it belongs to the very few examples of reversible serpin-proteinase complexes.

mSpeB binds A1AT with medium affinity

To further investigate the details of the mSpeB-A1AT binding we determined the dissociation constant, K_d , for the interaction between mSpeB and A1AT. The complex was initially analyzed by size-exclusion chromatography without detection of complexes (data not shown). Since this indicated a low affinity binding similar to previously observations for reversible serpin-proteinase complexes [38], the interaction was examined using fluorescence spectroscopy. Fluorescence emission spectra were recorded with excitation at 280 nm or 296 nm with the most significant changes in the emission intensity observed from excitation at 280 nm.

By addition of the emission spectra of mSpeB alone (10 μ M) and A1AT alone (0-100 μ M) one spectrum for each mSpeB:A1AT ratio was calculated. These summation spectra represented the unbound scenario and were compared to the spectra recorded on the mixture of the two proteins representing the complex. The difference in emission intensity at 280 nm was plotted against the concentration of A1AT (Figure 6). From a non-linear fit a K_d of 29 ± 7 μ M was determined. This K_d value was measured using E64-inhibited mSpeB, and further supports that the binding of mSpeB to A1AT is indeed independent of the enzymatic properties of mSpeB.

The structure of mSpeB with bound inhibitor [16] has revealed that the active conformation of mSpeB is the dimeric state of the protein which demands larger conformational changes in the enzyme. In these studies we showed that E-64 inhibited mSpeB had a dimerization constant of 27 ± 7 μ M, which decreased to 15 ± 7 μ M for uninhibited mSpeB [16]. No dimerization could be detected for zSpeB [16]. In light of the present results this suggests that at low enzyme concentration, A1AT may promote dimerization of mSpeB. The Western blot from the cross-linking experiments indicated a 2:1 complex rather than to a 1:1 complex between mSpeB and A1AT (Figure 4(A), lane 5-8). This is in line with the fact that active mSpeB is a dimer. The exact stoichiometry of the mSpeB-A1AT complex will have to await further studies.

A1AT binding to mSpeB boosts the contact system

Several inhibitors of kallikrein have been reported, among those A1AT [39]. To determine the importance of A1AT as an inhibitor of the contact system, a surplus of A1AT (0.64 mg/ml [14.4 μ M]) was added to human plasma inoculated with *S. pyogenes* strain AP1. If sequestration of A1AT by mSpeB was the cause of the enhanced bacterial killing, addition of A1AT should thus enhance bacterial survival in plasma. Indeed, addition of 14.4 μ M of A1AT to human plasma significantly enhanced bacterial survival

($p < 0.05$) (Figure 7A). Likewise, addition of A1AT to prekallikrein-free plasma had no effect on bacterial growth (Figure 7B). These findings underline not only the importance of the contact system in fighting bacterial infection in blood, but also the role of A1AT as an important inhibitor of the contact system.

mSpeB prolongs coagulation time

A1AT binds and inhibits activated protein C (APC) [40, 41]. APC acts as an anticoagulant by proteolytically inactivating factors Va and VIIIa thereby hindering the generation of thrombin [42, 43]. A predicted consequence of mSpeB binding of A1AT in plasma would thus be an increased concentration of uninhibited APC leading to a prolonged blood coagulation time.

The effect of E-64 inhibited mSpeB on blood coagulation was monitored using an *in vitro* coagulation assay. The time of onset of coagulation through the contact system (or intrinsic) pathway was monitored by the addition of a kaolin-containing solution to plasma, which is a potent contact activator. A significantly prolonged coagulation time ($* = p < 0.05$) was observed after addition of E64-inhibited mSpeB (Figure 8). Again, the effect was not a result of mSpeB proteolysis. Expectedly, mSpeB had no effect on the time of coagulation through the extrinsic pathway which is not influenced by A1AT (data not shown). These data demonstrate an mSpeB sequestration of A1AT that is independent of the presence of bacteria and independent of an activated contact system, and clearly demonstrates a bacterial-independent interaction between mSpeB and A1AT.

SpeB decreases bacterial dissemination in vivo

To test the effect of mSpeB on systemic dissemination of bacteria *in vivo*, a limited amount of mSpeB fully inhibited with E64 was administered intraperitoneally (*i.p.*) to a group of mice subsequent to *i.p.* injection of *S. pyogenes* AP1 bacteria. To rule out any proteolytic effect of the enzyme, only E64-inhibited mSpeB was administered. Dissemination of a bacterial systemic infection was significantly dampened when E-64 inhibited mSpeB was given to infected mice compared to controls ($P = 0.014$; two-tailed paired t-test), Figure 9. Importantly, no toxic effects of the inhibited mSpeB were directly evident as judged from the general well-being of the mice in accord with earlier studies on the toxicity of active mSpeB [20, 21]. In the control group one mouse died. The spleen from this mouse was also dissected and the number of CFU in the spleen was determined and included in the statistical analysis mentioned above. Excluding this animal from the control group still resulted in a significant difference between the two groups of mice ($P = 0.027$; two-tailed paired t-test), Figure 9(A). These data demonstrate that proteolytically inactive mSpeB significantly reduced bacterial dissemination *in vivo*.

To test whether the effect of administration of mSpeB on bacterial spreading *in vivo* could be attributed to an increased inflammatory response, mononuclear cells were incubated with E64 inhibited mSpeB. The response was compared to that of the cell wall component peptidoglycan (PGN), Figure 9(B). Judged from the release of IL-6 and IL-8, mSpeB was a poor proinflammatory agent compared to PGN. Chemotaxis experiments with human neutrophils demonstrated further that mSpeB was not a chemotactic factor towards human neutrophils (data not shown).

DISCUSSION

The streptococcal cysteine protease mSpeB is important for the invasion and survival of *S. pyogenes* in the human host and is known to have several immune modulating activities ensuring the successful survival of the bacteria [10, 44]. The expression of mSpeB appears tightly regulated and is not initiated until the bacteria enter stationary growth phase *in vitro* [44]. During *in vivo* infection mSpeB is necessary for bacterial invasion but following systemic dissemination mSpeB expression is down-regulated [23, 45, 46]. This indicates that after the initial invasion the continued presence of mSpeB may be detrimental for the bacteria.

We observed that the mature form of the cysteine protease mSpeB when fully inactivated with the covalently bound inhibitor E64 possessed the ability to enhance the endogenous antibacterial action of the contact system. This boosting of the contact system by mSpeB was achieved by a reversible, medium affinity binding of the promiscuous protease inhibitor A1AT, adding a novel complex to the few non-covalent serpin-complexes known so far. We observed the same non-covalent interaction between A1AT and active SpeB. The importance of this finding was underscored by *in vivo* experiments in mice. Dissemination of a bacterial systemic infection was significantly dampened when E64-inhibited mSpeB was administered to infected mice compared to controls as judged by a significantly lower number of CFU in their spleen. It has previously been shown that inhibition of the contact system enhances bacterial spreading [29]. Here we demonstrated the reverse, that enhancement of contact activation actually limits the bacterial infection.

The bacterial enzyme mSpeB plays an important role through its enzymatic activity not only for bacterial invasion, but it is also important for subversion of the immune responses for example by degrading antibodies [47] and antimicrobial peptides [12]. The present data demonstrates that mSpeB additionally enhances one of the important innate immune responses, the contact system, and does so via binding (and cleavage) of A1AT. These results also demonstrate a novel and important role of A1AT as modulator of an innate immune response in plasma.

Under normal conditions A1AT circulates the blood at a concentration of approximately 25 μM [48]. However, patients in sepsis display a marked elevation in the amount of A1AT [49]. At the same time plasma levels of HMWK, plasma kallikrein and factor XII are low in these patients [49]. After invasion the expression of mSpeB is reduced below the detection limit and would therefore not have an effect. However, since the blood concentration of A1AT is similar to the measured K_d , one would expect half of the A1AT to be scavenged by an administered bolus of mSpeB. Moreover, uninhibited mSpeB has the ability to cleave and inactivate A1AT which by itself would lead to depletion of A1AT. The ability of mSpeB to bind and cleave A1AT as demonstrated here would in turn free the newly generated kallikrein from inhibition by A1AT and thus result in an increased liberation of antimicrobial peptides from HMWK. Consequently, addition of exogenous A1AT to human plasma *in vitro* significantly increased the bacterial growth in plasma underscoring the relevance of the findings and the significance of the contact system in controlling bacterial infections in blood. Although A1AT is an important inhibitor of neutrophil proteases, increased concentration of A1AT during sepsis may have adverse effects by diminishing bacterial clearance by contact activation.

Scavenging by binding and cleavage of A1AT by mSpeB also induced a prolonged coagulation time. One of the hallmarks of severe *S. pyogenes* infections is hypercoagulation [50]. Addition of mSpeB to plasma caused a modest prolongation of the coagulation time after activation of the intrinsic pathways. Accordingly, possible scavenging of A1AT by mSpeB is not expected to worsen the hypercoagulative state seen in sepsis.

The conserved cysteine protease of *S. pyogenes*, SpeB, was observed to enhance the innate immune response against streptococci in plasma by non-covalent binding of A1AT. This led to boosting of an *a priori* activation of the contact system following bacterial contact and a subsequent increased generation of antimicrobial peptides. These findings demonstrate the benefits for the bacteria in down-regulation of SpeB during systemic infections and suggest that inhibition of A1AT during bacterial infections could have a beneficial therapeutic potential.

ACKNOWLEDGEMENTS

We thank Bertrand Raynal at the Pasteur Institute for performing analytical ultracentrifugation analysis and Charlotte O'Shea for the gift of SBED-labeled Spd1. The outstanding technical assistance of Signe A. Sjørup, Malgorzata Berlikowski, and Maria Baumgarten is greatly appreciated. We thank Sarah Nørklit Roed for helpful discussions.

REFERENCES

- 1 Lamagni, T. L., Darenberg, J., Luca-Harari, B., Siljander, T., Efstratiou, A., Henriques-Normark, B., Vuopio-Varkila, J., Bouvet, A., Creti, R., Ekelund, K., Koliou, M., Reinert, R. R., Stathi, A., Strakova, L., Ungureanu, V., Schalen, C. and Jasir, A. (2008) Epidemiology of severe *Streptococcus pyogenes* disease in Europe. *J. Clin. Microbiol.* **46**, 2359-2367
- 2 Carapetis, J. R., McDonald, M. and Wilson, N. J. (2005) Acute rheumatic fever. *The Lancet.* **366**, 155-168
- 3 Johnson, D. R., Stevens, D. L. and Kaplan, E. L. (1992) Epidemiologic analysis of group A streptococcal serotypes associated with severe systemic infections, rheumatic fever, or uncomplicated pharyngitis. *J. Infect. Dis.* **166**, 374-382
- 4 Sendi, P., Johansson, L., Dahesh, S., Van-Sorge, N. M., Darenberg, J., Norgren, M., Sjolín, J., Nizet, V. and Norrby-Teglund, A. (2009) Bacterial phenotype variants in group B streptococcal toxic shock syndrome. *Emerg. Infect. Dis.* **15**, 223-232
- 5 Nizet, V. (2007) Understanding how leading bacterial pathogens subvert innate immunity to reveal novel therapeutic targets. *J. Allergy Clin. Immunol.* **120**, 13-22
- 6 Tart, A. (2007) New understanding of the group A *Streptococcus* pathogenesis cycle. *Trends Microbiol.* **15**, 318-325
- 7 Fae, K. C., da Silva, D. D., Oshiro, S. E., Tanaka, A. C., Pomerantzeff, P. M., Douay, C., Charron, D., Toubert, A., Cunningham, M. W., Kalil, J. and Guilherme, L. (2006) Mimicry in recognition of cardiac myosin peptides by heart-intralesional T cell clones from rheumatic heart disease. *J. Immunol.* **176**, 5662-5670
- 8 Prinz, J. C. (2004) Disease mimicry--a pathogenetic concept for T cell-mediated autoimmune disorders triggered by molecular mimicry? *Autoimmunity reviews.* **3**, 10-15
- 9 Todar, K. (2002) *Streptococcus pyogenes* In Todar's online textbook of bacteriology, University of Wisconsin-Madison Department of Bacteriology
- 10 Collin, M. and Olsen, A. (2003) Extracellular enzymes with immunomodulating activities: variations on a theme in *Streptococcus pyogenes*. *Infect. Immun.* **71**, 2983-2992
- 11 Kapur, V., Majesky, M. W., Li, L. L., Black, R. A. and Musser, J. M. (1993) Cleavage of interleukin 1 beta (IL-1 beta) precursor to produce active IL-1 beta by a conserved extracellular cysteine protease from *Streptococcus pyogenes*. *Proc. Natl. Acad. Sci. USA.* **90**, 7676-7680
- 12 Schmidtchen, A., Frick, I. M., Andersson, E., Tapper, H. and Bjorck, L. (2002) Proteinases of common pathogenic bacteria degrade and inactivate the antibacterial peptide LL-37. *Mol. Microbiol.* **46**, 157-168
- 13 Liu, T. Y. and Elliott, S. D. (1965) Streptococcal Proteinase: the Zymogen to Enzyme Transformation. *J. Biol. Chem.* **240**, 1138-1142
- 14 Kagawa, T. F., Cooney, J. C., Baker, H. M., McSweeney, S., Liu, M., Gubba, S., Musser, J. M. and Baker, E. N. (2000) Crystal structure of the zymogen form of the group A *Streptococcus* virulence factor SpeB: an integrin-binding cysteine protease. *Proc. Natl. Acad. Sci. USA.* **97**, 2235-2240
- 15 Wang, C. C., Houg, H. C., Chen, C. L., Wang, P. J., Kuo, C. F., Lin, Y. S., Wu, J. J., Lin, M. T., Liu, C. C., Huang, W. and Chuang, W. J. (2009) Solution structure and backbone dynamics of streptopain: Insight into diverse substrate specificity. *J. Biol. Chem.* **284**, 10957-10967
- 16 Olsen, J., Dagil, R., Meinert Niclasen, L., Sørensen, O. and Kragelund, B. (2009) Structure of the mature streptococcal cysteine protease exotoxin mSpeB in its active dimeric form. *J. Mol. Biol.* **393**, 693-703

- 17 Trevino, J., Perez, N., Ramirez-Pena, E., Liu, Z., Shelburne, S. A., 3rd, Musser, J. M. and Sumbly, P. (2009) CovS simultaneously activates and inhibits the CovR-mediated repression of distinct subsets of group A Streptococcus virulence factor-encoding genes. *Infect. Immun.* **77**, 3141-3149
- 18 Ma, Y., Bryant, A. E., Salmi, D. B., McIndoo, E. and Stevens, D. L. (2009) *yfr*, a novel locus affecting cysteine protease production in Streptococcus pyogenes. *J. Bacteriol.* **191**, 3189-3194
- 19 Neely, M. N., Lyon, W. R., Runft, D. L. and Caparon, M. (2003) Role of RopB in growth phase expression of the SpeB cysteine protease of Streptococcus pyogenes. *J. Bacteriol.* **185**, 5166-5174
- 20 Lukomski, S., Sreevatsan, S., Amberg, C., Reichardt, W., Woischnik, M., Podbielski, A. and Musser, J. M. (1997) Inactivation of Streptococcus pyogenes extracellular cysteine protease significantly decreases mouse lethality of serotype M3 and M49 strains. *J. Clin Invest.* **99**, 2574-2580
- 21 Kuo, C. F., Wu, J. J., Lin, K. Y., Tsai, P. J., Lee, S. C., Jin, Y. T., Lei, H. Y. and Lin, Y. S. (1998) Role of streptococcal pyrogenic exotoxin B in the mouse model of group A streptococcal infection. *Infect. Immun.* **66**, 3931-3935
- 22 Lukomski, S., Montgomery, C. A., Rurangirwa, J., Geske, R. S., Barrish, J. P., Adams, G. J. and Musser, J. M. (1999) Extracellular cysteine protease produced by Streptococcus pyogenes participates in the pathogenesis of invasive skin infection and dissemination in mice. *Infect. Immun.* **67**, 1779-1788
- 23 Cole, J. N., McArthur, J. D., McKay, F. C., Sanderson-Smith, M. L., Cork, A. J., Ranson, M., Rohde, M., Itzek, A., Sun, H., Ginsburg, D., Kotb, M., Nizet, V., Chhatwal, G. S. and Walker, M. J. (2006) Trigger for group A streptococcal MIT1 invasive disease. *Faseb. J.* **20**, 1745-1747
- 24 Kazmi, S. U., Kansal, R., Aziz, R. K., Hooshdaran, M., Norrby-Teglund, A., Low, D. E., Halim, A. B. and Kotb, M. (2001) Reciprocal, temporal expression of SpeA and SpeB by invasive MIT1 group a streptococcal isolates in vivo. *Infect. Immun.* **69**, 4988-4995
- 25 Graham, M. R., Virtaneva, K., Porcella, S. F., Barry, W. T., Gowen, B. B., Johnson, C. R., Wright, F. A. and Musser, J. M. (2005) Group A Streptococcus transcriptome dynamics during growth in human blood reveals bacterial adaptive and survival strategies. *Am. J. Pathol.* **166**, 455-465
- 26 GraphPad. (2004) GraphPad Prism. GraphPad Software, Inc.
- 27 Böyum, A. (1968) Isolation of mononuclear cells and granulocytes from human blood - isolation by one centrifugation and of granulocytes by combining centrifugation and sedimentation at 1G. *Scand. J. Clin. Lab. Invest.* **97**, 77-89
- 28 Loughman, J. A. and Caparon, M. (2006) Regulation of SpeB in Streptococcus pyogenes by pH and NaCl: a model for in vivo gene expression. *J. Bacteriol.* **188**, 399-408
- 29 Frick, I. M., Akesson, P., Herwald, H., Morgelin, M., Malmsten, M., Nagler, D. K. and Bjorck, L. (2006) The contact system--a novel branch of innate immunity generating antibacterial peptides. *EMBO J.* **25**, 5569-5578
- 30 Frick, I. M., Bjorck, L. and Herwald, H. (2007) The dual role of the contact system in bacterial infectious disease. *Thromb. Haemostasis* **98**, 497-502
- 31 Nestoras, K., Mohammed, A. H., Schreurs, A. S., Fleck, O., Watson, A. T., Poitelea, M., O'Shea, C., Chahwan, C., Holmberg, C., Kragelund, B. B., Nielsen, O., Osborne, M., Carr, A. M.

- and Liu, C. Regulation of ribonucleotide reductase by Spd1 involves multiple mechanisms. *Genes Dev.* **24**, 1145-1159
- 32 Finotti, P. and Pagetta, A. (1997) Albumin contamination of a purified human alpha 1-antitrypsin preparation does not affect either structural conformation or the electrophoretic mobility of the inhibitor. *Clin. Chim. Acta.* **264**, 133-148
- 33 Fasano, M., Curry, S., Terreno, E., Galliano, M., Fanali, G., Narciso, P., Notari, S. and Ascenzi, P. (2005) The extraordinary ligand binding properties of human serum albumin. *IUBMB Life.* **57**, 787-796
- 34 Kagawa, T. F., O'Toole P, W. and Cooney, J. C. (2005) SpeB-Spi: a novel protease-inhibitor pair from *Streptococcus pyogenes*. *Mol. Microbiol.* **57**, 650-666
- 35 Wilczynska, M., Fa, M., Karolin, J., Ohlsson, P. I., Johansson, L. B. and Ny, T. (1997) Structural insights into serpin-protease complexes reveal the inhibitory mechanism of serpins. *Nat. Struct. Biol.* **4**, 354-357
- 36 Huntington, J. A., Read, R. J. and Carrell, R. W. (2000) Structure of a serpin-protease complex shows inhibition by deformation. *Nature* **407**, 923-926
- 37 Dementiev, A., Simonovic, M., Volz, K. and Gettins, P. G. (2003) Canonical inhibitor-like interactions explain reactivity of alpha1-proteinase inhibitor Pittsburgh and antithrombin with proteinases. *J. Biol. Chem.* **278**, 37881-37887
- 38 Peterson, F. C., Gordon, N. C. and Gettins, P. G. (2000) Formation of a noncovalent serpin-proteinase complex involves no conformational change in the serpin. Use of 1H-15N HSQC NMR as a sensitive nonperturbing monitor of conformation. *Biochemistry* **39**, 11884-11892
- 39 McConnell, D. J. (1972) Inhibitors of kallikrein in human plasma. *J. Clin. Invest.* **51**, 1611-1623
- 40 Heeb, M. J. and Griffin, J. H. (1988) Physiologic inhibition of human activated protein C by alpha 1-antitrypsin. *J. Biol. Chem.* **263**, 11613-11616
- 41 Janciauskiene, S. (2001) Conformational properties of serine proteinase inhibitors (serpins) confer multiple pathophysiological roles. *Biochim. Biophys. Acta.* **1535**, 221-235
- 42 van der Poll, T., Levi, M., Nick, J. A. and Abraham, E. (2005) Activated protein C inhibits local coagulation after intrapulmonary delivery of endotoxin in humans. *Am. J. Respir. Crit. Care Med.* **171**, 1125-1128
- 43 Esmon, C. T., Fukudome, K., Mather, T., Bode, W., Regan, L. M., Stearns-Kurosawa, D. J. and Kurosawa, S. (1999) Inflammation, sepsis, and coagulation. *Haematologica* **84**, 254-259
- 44 Chaussee, M. S., Phillips, E. R. and Ferretti, J. J. (1997) Temporal production of streptococcal erythrogenic toxin B (streptococcal cysteine proteinase) in response to nutrient depletion. *Infect. Immun.* **65**, 1956-1959
- 45 Chatellier, S., Ihendyane, N., Kansal, R. G., Khambaty, F., Basma, H., Norrby-Teglund, A., Low, D. E., McGeer, A. and Kotb, M. (2000) Genetic relatedness and superantigen expression in group A streptococcus serotype M1 isolates from patients with severe and nonsevere invasive diseases. *Infect. Immun.* **68**, 3523-3534
- 46 Kansal, R. G., McGeer, A., Low, D. E., Norrby-Teglund, A. and Kotb, M. (2000) Inverse relation between disease severity and expression of the streptococcal cysteine protease, SpeB, among clonal M1T1 isolates recovered from invasive group A streptococcal infection cases. *Infect. Immun.* **68**, 6362-6369
- 47 Collin, M. and Olsen, A. (2001) Effect of SpeB and EndoS from *Streptococcus pyogenes* on human immunoglobulins. *Infect. Immun.* **69**, 7187-7189

- 48 Yang, P., Wentzlaff, K. A., Katzmann, J. A., Marks, R. S., Allen, M. S., Lesnick, T. G., Lindor, N. M., Myers, J. L., Wiegert, E., Midthun, D. E., Thibodeau, S. N. and Krowka, M. J. (1999) Alpha1-antitrypsin deficiency allele carriers among lung cancer patients. *Cancer Epidemiol. Biomarkers Prev.* **8**, 461-465
- 49 Smith-Erichsen, N., Aasen, A. O., Gallimore, M. J. and Amundsen, E. (1982) Studies of components of the coagulation systems in normal individuals and septic shock patients. *Circulatory shock.* **9**, 491-497
- 50 Bisno, A. L. and Stevens, D. L. (1996) Streptococcal infections of skin and soft tissues. *N. Engl. J. Med.* **334**, 240-245

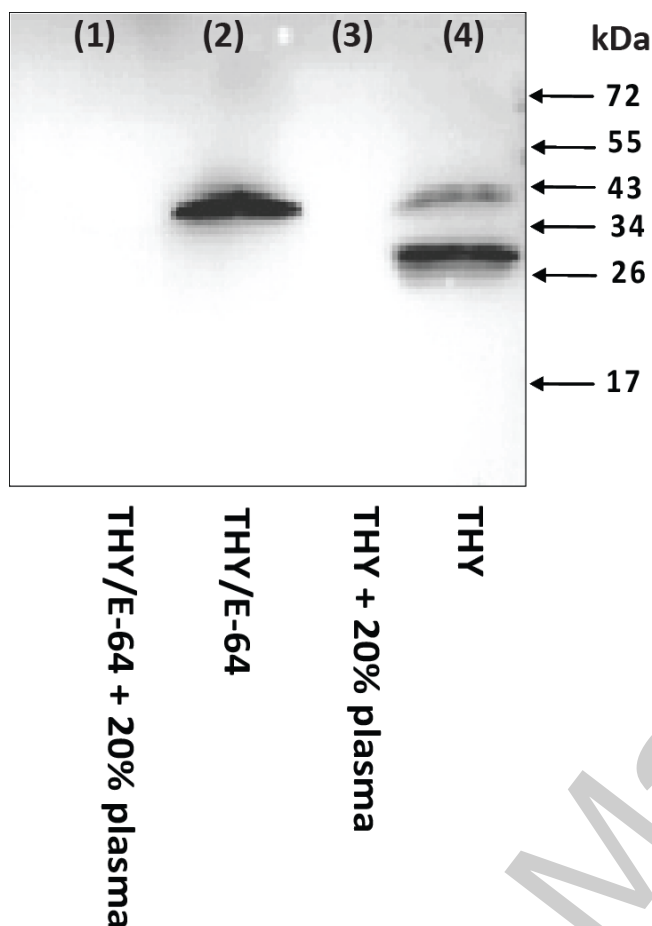


Figure 1: Plasma influences the amount of mSpeB secreted by *Streptococcus pyogenes*. Bacteria strain ALAB49 was grown and harvested in stationary phase from THY media supplemented with (lanes 1 and 3) or without (lanes 2 and 4) 20% (v/v) of human plasma. The harvested cells were normalized by OD (OD=1) and directly analyzed by Western blot. The presence of SpeB was investigated by Western blot showing the presence of enzyme only in the absence of plasma. In the presence of the protease inhibitor E64 (lane 1 and 2), the zymogen protein at 40 kDa was detected (lane 2) and in the absence of E64, this was matured also to active enzyme mSpeB at 28 kDa (lane 4). The presence of SpeB was irrespective of the activity of the enzyme (compare lanes 2 and 4). Molecular weight markers are indicated to the right.

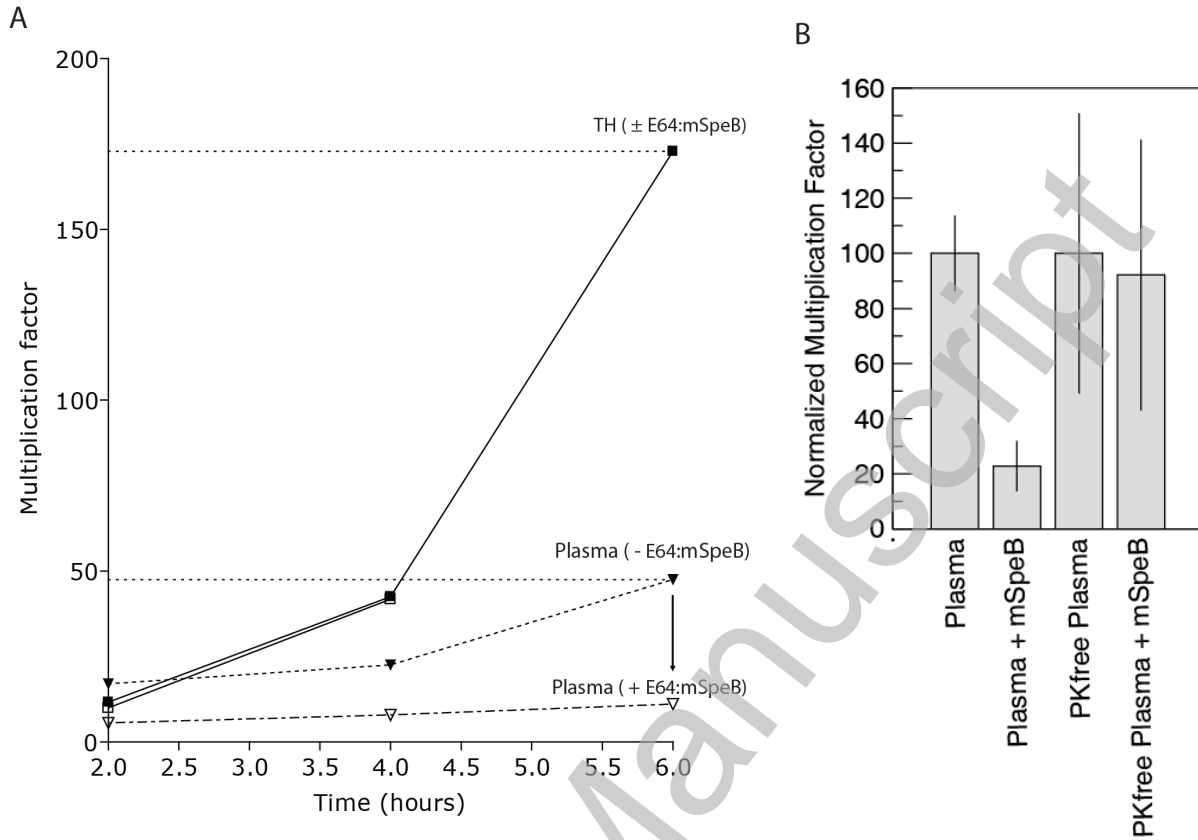


Figure 2: Inhibition of bacterial growth by mSpeB. A) Growth of *S. pyogenes* AP1 in TH or in plasma with or without E64-inhibited mSpeB present. *S. pyogenes* AP1 bacteria were cultivated in TH media (■—■) or in undiluted human plasma (▼ (dotted line); ▽ (dashed line)). Filled symbols represent growth without mSpeB and open symbols represent growth with E64-inhibited mSpeB added. The two vertical dotted lines show growth after 6 hours in TH-media (upper line) and plasma (lower line) and are drawn to guide the eye. Significantly reduced growth was seen when E64-inhibited mSpeB were added to the plasma (*= $p < 0.05$). This effect was not seen when E64-inhibited mSpeB was added to TH-media. Cultures were evaluated at the same time points after incubation, they were in the same growth phase (stationary) and OD was measured, standardized and dilution made from this. B) Effect of mSpeB on bacterial growth in prekallikrein deficient (PKfree) plasma compared to ordinary plasma. The normalized effects are relative to growth under non-mSpeB conditions. mSpeB significantly reduced bacterial growth in plasma with little or no effect of mSpeB on growth of AP1 in PKfree plasma.

THIS IS NOT THE VERSION OF RECORD - see doi:10.1042/BJ20100984

THIS IS NOT THE VERSION OF RECORD - see doi:10.1042/BJ20100984

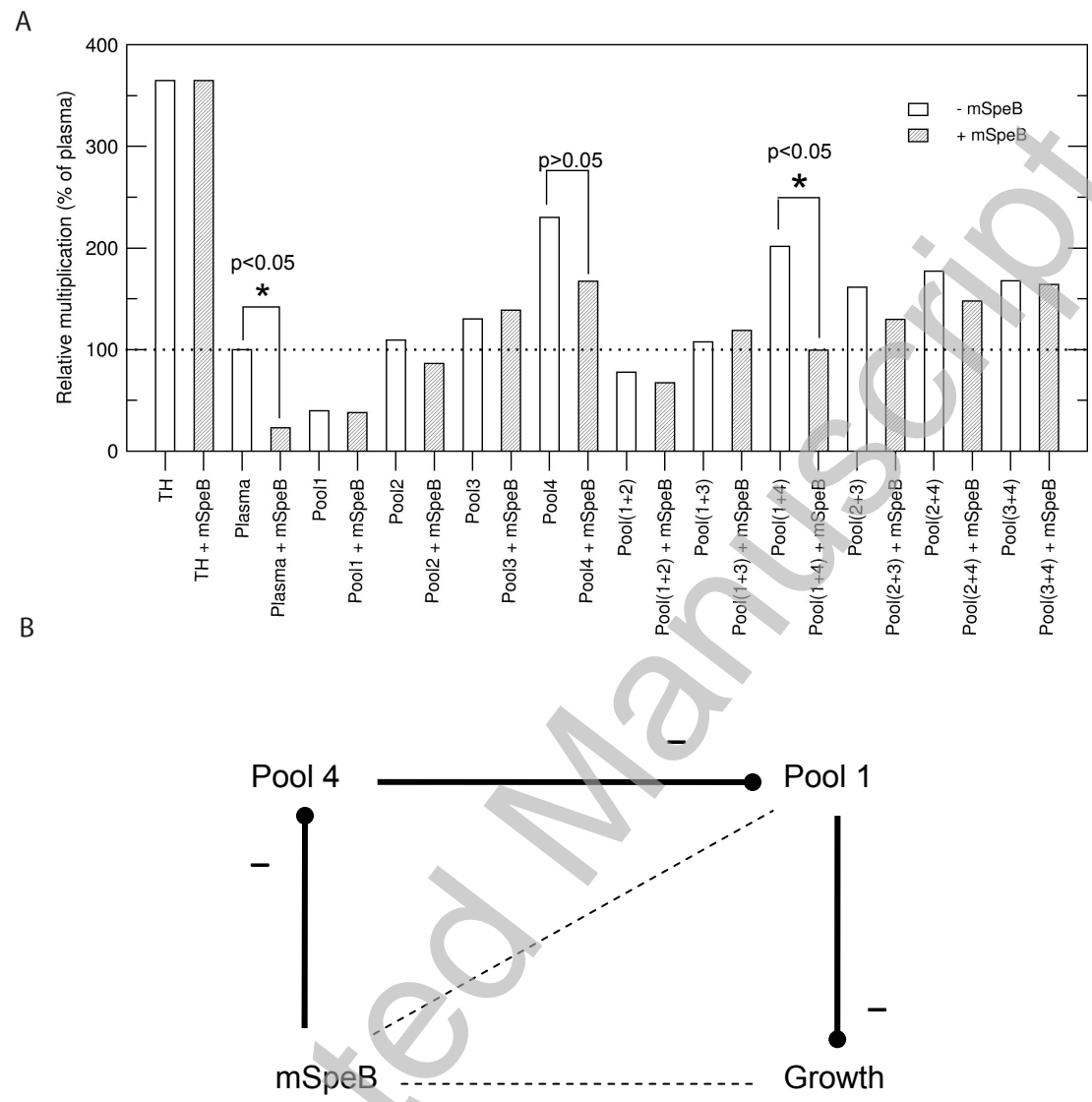


Figure 3: mSpeB inhibits bacterial growth through interaction with plasma proteins. A) Growth of SP strain AP1 in selected plasma protein pools obtained from gel filtration of whole plasma compared to growth in TH and plasma after 6 hours of incubation. Growth has been normalized to growth in plasma and the dotted line indicates 100% (equal to growth in plasma). Poor growth was seen for plasma pool 1 (high molecular weight plasma proteins) regardless of addition of E64-inhibited mSpeB (Pool 1 + SpeB). Plasma pool 4 (low molecular weight plasma proteins) showed a growth rate comparable to growth in TH media with a reduction in growth, although insignificant, with addition of E-64-inhibited mSpeB ($p>0.05$). Pooled plasma pools 1 and 4 (Pool 1&4) showed significant E-64-inhibited mSpeB dependent reduction in growth after 6 hours ($*=p<0.05$). B) A scheme delineating the primary conclusion from the growth inhibition assays shown in A). Addition of E64-inhibited mSpeB has no significant effect on

growth in the presence of any of pools 1 through 3 and only a modest growth inhibitory effect when combined with pool 4. Adding pool 4 to pool 1 abolishes the growth inhibitory effect of pool 1 but shows that inhibition is impeded - at least in part - by the addition of the E64-mSpeB complex. Dashed lines indicate *no effect*; solid lines with black ball indicate an inhibitory effect.

THIS IS NOT THE VERSION OF RECORD - see doi:10.1042/BJ20100984

Accepted Manuscript

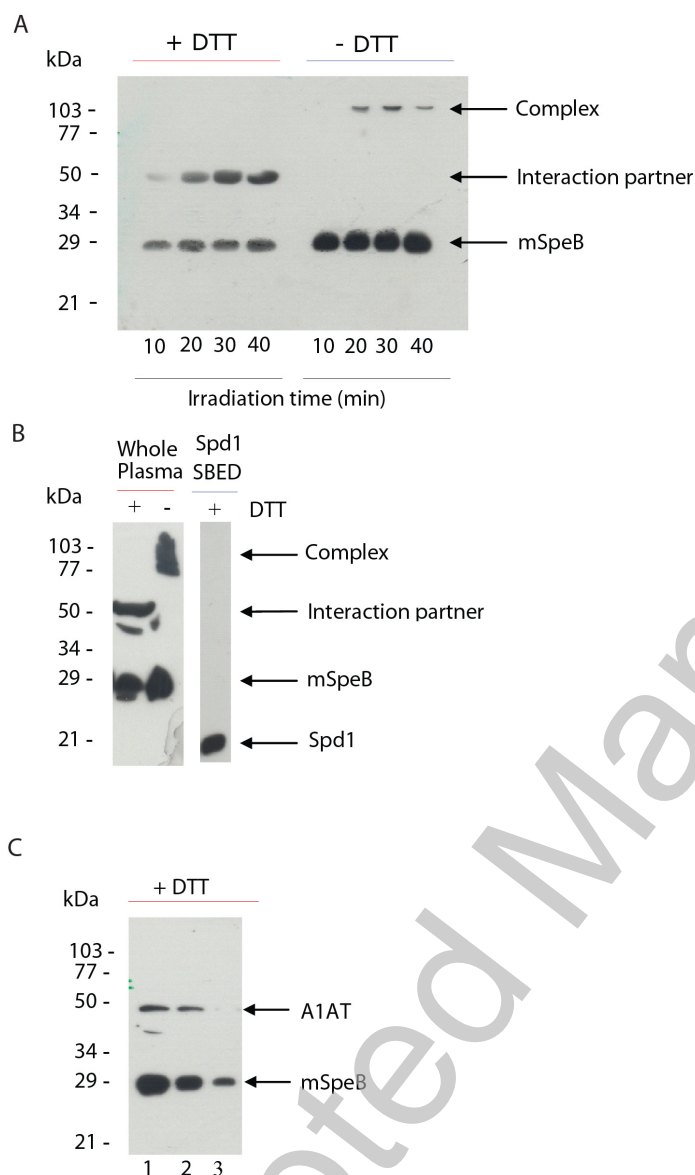


Figure 4: Identification of plasma interaction partners. Western blots of cross-linking experiment with SBED-labeled mSpeB. A) Western blot of cross-linking experiment using SBED-labeled mSpeB and plasma pool 4 (low molecular weight proteins from human plasma). Labeling efficiency was tested at 365 nm and 19 μ M mSpeB at different irradiation times. One single band of approximately 50 kDa was identified indicating one single interaction partner. The samples were run with and without reducing agent with the non reduced samples revealing the complex between mSpeB and the interaction partner. B) Western blot of cross-linking experiment of SBED-labeled mSpeB with whole human plasma or with Spd1. The cross-linking experiment showed one major band and one minor when incubating mSpeB-SBED with whole plasma. Spd1-SBED did not cross-link to any protein in whole plasma indicating that the affinity of

mSpeB for any partner does not originate from the photo label itself. C) Western blot of cross-linking between purified A1AT and SBED-labeled mSpeB. Commercially purchased A1AT cross-linked to SBED-labeled mSpeB (40 μ M) at different ratios. Lane 1: (1:0.5) ratio of mSpeB-SBED:A1AT. Lane 2: 1:1 ratio of mSpeB-SBED:A1AT. Lane 3: 1:5 ratio of mSpeB-SBED:A1AT (uncorrected for volume changes). Without the presence of other plasma proteins to assist the interaction, interaction of the two proteins is still possible.

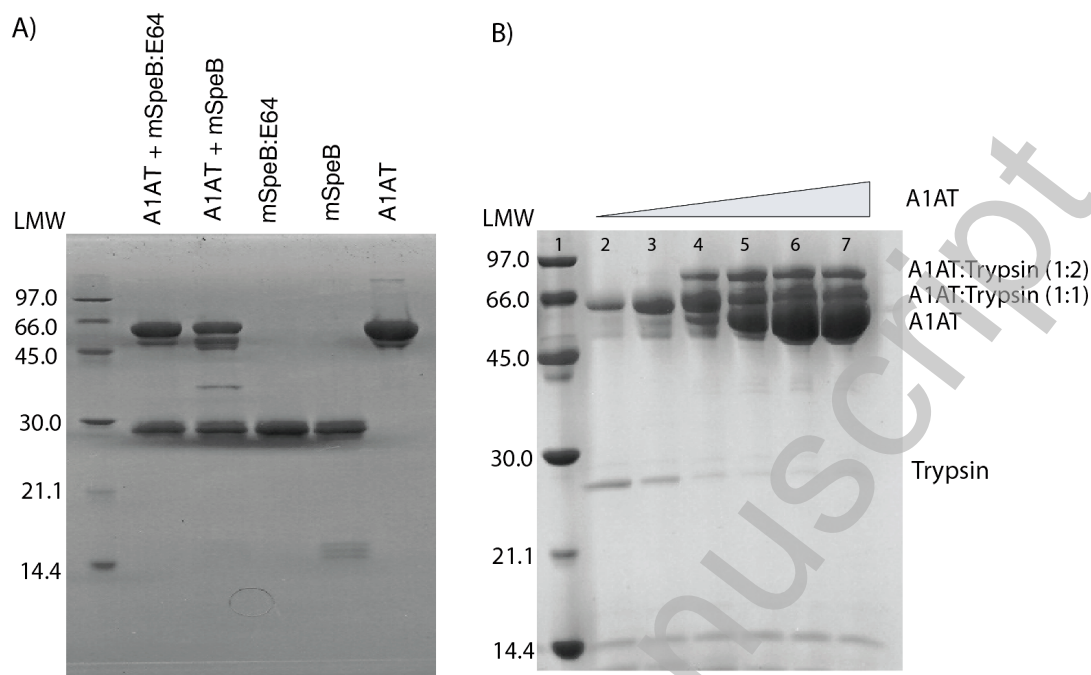


Figure 5: mSpeB degrades A1AT without formation of a covalent complex. Commercially purchased A1AT was incubated for 6 hours at RT with either active or E64-inhibited mSpeB at 1:1 molar ratios. The reaction mixtures were analyzed by non-reducing SDS-PAGE and stained with coomassie brilliant blue. A) E64-inhibited and active mSpeB mixed with A1AT are shown in lane 1 and 2, respectively. Lane 3, 4 and 5 show E64-inhibited mSpeB, active mSpeB and A1AT run separately. LMW is shown in the left side of the SDS-PAGE gel. B) A1AT and trypsin mixed forms covalent complex. From lanes left to right increasing amounts of A1AT are added while the trypsin concentration is kept constant. From lane 4 to 7 a A1AT:trypsin 2:1 complex is formed. LMW is shown to the left.

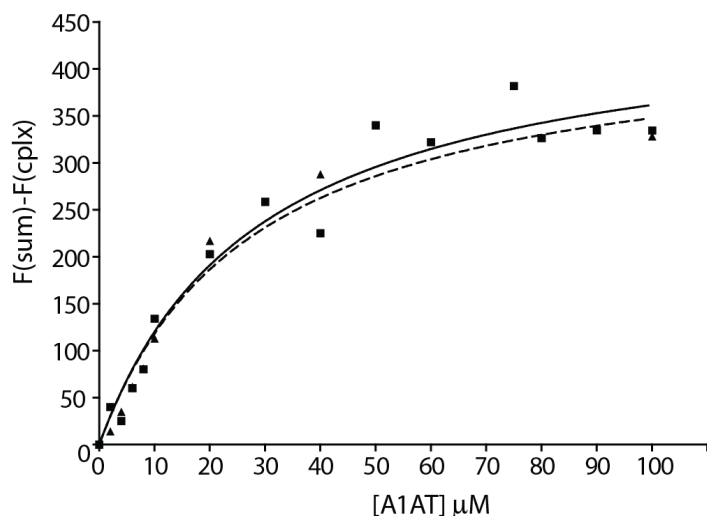


Figure 6: A1AT and mSpeB interact specifically - K_d determination using fluorescence spectroscopy. The interaction between mSpeB and A1AT was examined using fluorescence spectroscopy. 10 μM mSpeB was incubated with 0-100 μM A1AT in PBS pH 7.4 at room temperature and the summed emission curve was compared to the emission curve of the complex sample (see experimental procedures). The K_d for binding between E64-inhibited mSpeB and A1AT was determined to be $29 \pm 7 \mu\text{M}$ (solid line) from a non-linear fit to the equation expecting one binding site ($Y = (B_{\text{max}} * x)/(K_d + x)$) using GraphPad Prism 4. Two independent measurements are shown at two different E64-concentrations, 1:0.8 as filled squares and 1:2 as filled triangles. The value of K_d is the average of the two measurements and the error represents the goodness of the fit.

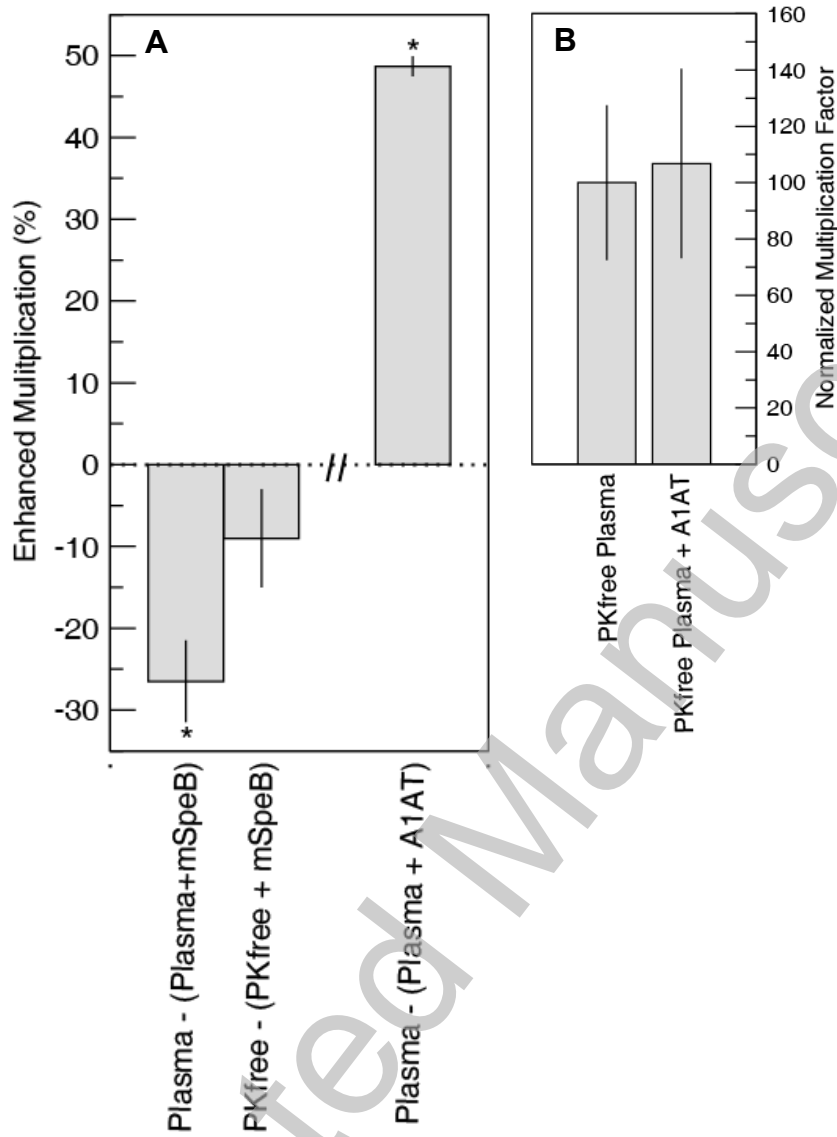


Figure 7: A1AT knocks out the contact system and leads to enhanced bacterial growth. A) Significantly enhanced growth was seen when A1AT at 14.4 μ M were added to human plasma leading to enhanced bacterial multiplication (*= p <0.05). Growth of AP1 bacteria was normalized to growth in human plasma without addition of A1AT. For comparison the effects from E64-inhibited mSpeB on growth in human plasma and in prekallikrein-free plasma are shown. The effects were normalized to growth in the absence of E64-inhibited mSpeB. *S. pyogenes* AP1 bacteria were cultivated and growth monitored after 6 hours. B) No effect on growth was observed when A1AT at 14.4 μ M was added to prekallikrein-free plasma. Multiplication after 6 hours were measured and normalized to growth in prekallikrein-free plasma added PBS.

THIS IS NOT THE VERSION OF RECORD - see doi:10.1042/BJ20100984

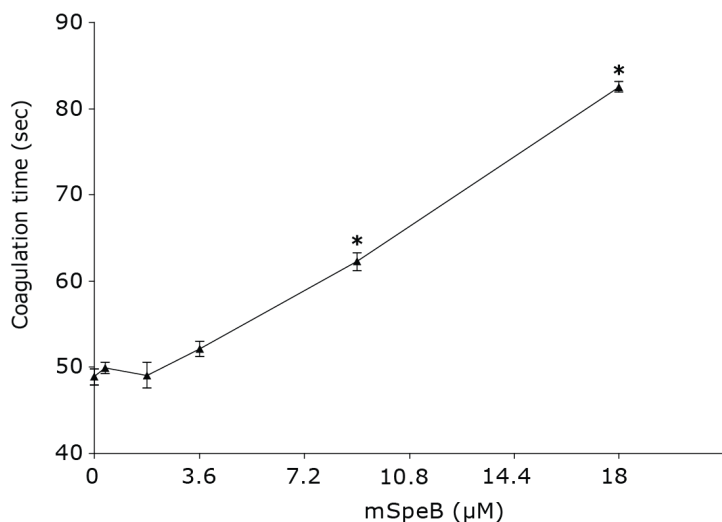


Figure 8: mSpeB induces increased blood coagulation time through the contact system. The coagulation time of human citrate plasma was examined through the intrinsic pathway of coagulation. The time to form a clot was significantly prolonged after incubation with E64-inhibited mSpeB (—▲—) at concentrations of 9 µM (*= $p < 0.05$).

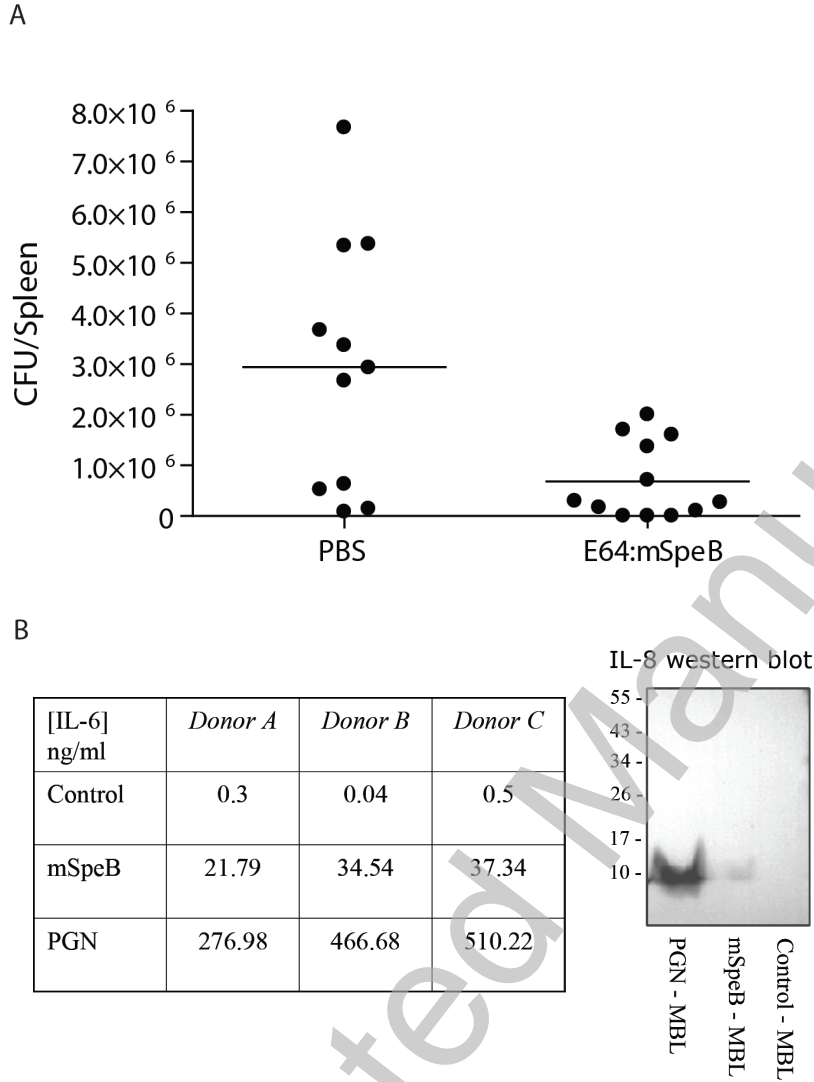


Figure 9: SpeB decreased bacterial dissemination of *S. pyogenes in vivo* and had limited proinflammatory activity. A) Limited systemic spread of bacteria *in vivo* was observed. Male Balb/C mice 8-11 weeks of age were injected i.p. with *S. pyogenes* AP1 bacteria (1×10^6 CFU), followed by i.p. injection of PBS(E64) or mSpeB(E64) (50 μ g/animal). The mice were sacrificed 18 hours after the last injection and the total number of CFU in the spleen was determined by serial dilution on blood agar plates. The number of CFU in the spleen of the mice administered with mSpeB was significantly lower than in the control group ($P=0.027$). The P-value was determined using the two-tailed t-test. Bars represent the mean value in each group. B) Limited proinflammatory activity of SpeB. Mononuclear cells harvested from blood (MBL) were

THIS IS NOT THE VERSION OF RECORD - see doi:10.1042/BJ20100984

stimulated with 10 $\mu\text{g/ml}$ peptidoglycan (PGN), or 10 $\mu\text{g/ml}$ E64 inhibited mSpeB (mSpeB). After four days the medium was harvested and analyzed for IL-6 and IL-8 production. Left: IL-6 production monitored by ELISA. Limited IL-6 production was found in mSpeB stimulated MBLs compared to those stimulated with peptidoglycan. Right: IL-8 production was analyzed by Western blot where mSpeB was shown to be a poor inducer of IL-8 production compared to peptidoglycan (a representative experiment out of three is shown).