



HAL
open science

Characterization of lead-recycling facility emissions at various workplaces: Major insights for sanitary risks assessment

Gaëlle Uzu, Sophie Sobanska, Geraldine Sarret, Jean-Jacques Sauvain, Philippe Pradere, Camille Dumat

► To cite this version:

Gaëlle Uzu, Sophie Sobanska, Geraldine Sarret, Jean-Jacques Sauvain, Philippe Pradere, et al.. Characterization of lead-recycling facility emissions at various workplaces: Major insights for sanitary risks assessment. *Journal of Hazardous Materials*, 2011, 186 (2-3), pp.1018-1027. 10.1016/j.jhazmat.2010.11.086 . hal-00559677

HAL Id: hal-00559677

<https://hal.science/hal-00559677v1>

Submitted on 26 Jan 2011

HAL is a multi-disciplinary open access archive for the deposit and dissemination of scientific research documents, whether they are published or not. The documents may come from teaching and research institutions in France or abroad, or from public or private research centers.

L'archive ouverte pluridisciplinaire **HAL**, est destinée au dépôt et à la diffusion de documents scientifiques de niveau recherche, publiés ou non, émanant des établissements d'enseignement et de recherche français ou étrangers, des laboratoires publics ou privés.

Figure captions**Figure-1**

Pb LIII-edge EXAFS spectra for aged Emissions PM and reference compounds. Dashed line: linear combination fit.

Figure 2

SEM observations on PM from different origins.

Figure 3

Results of CaCl_2 (0.01M) extractions for refining, furnace and emissions PM, expressed as the percentages of total metal content: ■ PM_{tot} , ■ PM_{10} and ■ $\text{PM}_{2.5}$

Figure 4

Total deposited and bioaccessible mass (CaCl_2 extraction) of the different elements in the tracheo-bronchial or in the alveolar region calculated for an exposure duration of 8 hours at the Furnace (A) or at the Refining (B) workplace. The greyish zone is enlarged on the right panel.

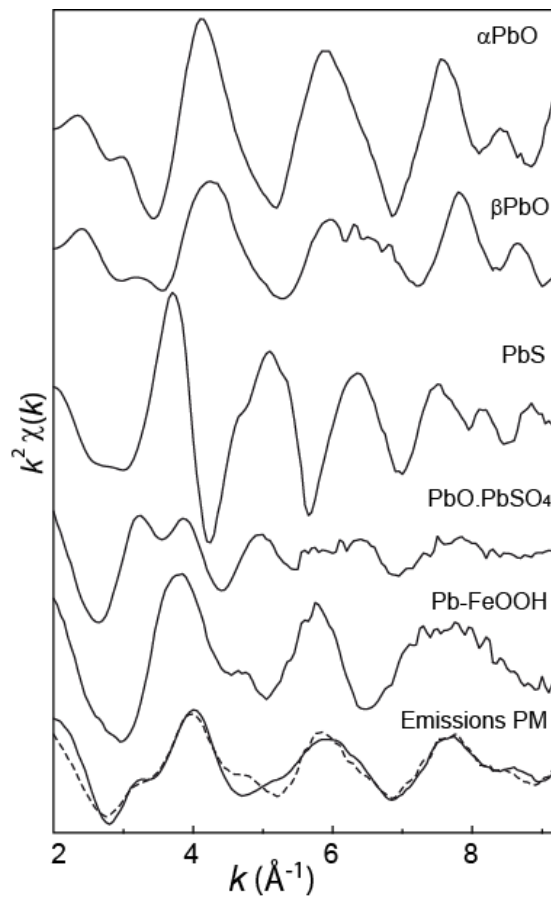
Figure 1

Figure-2

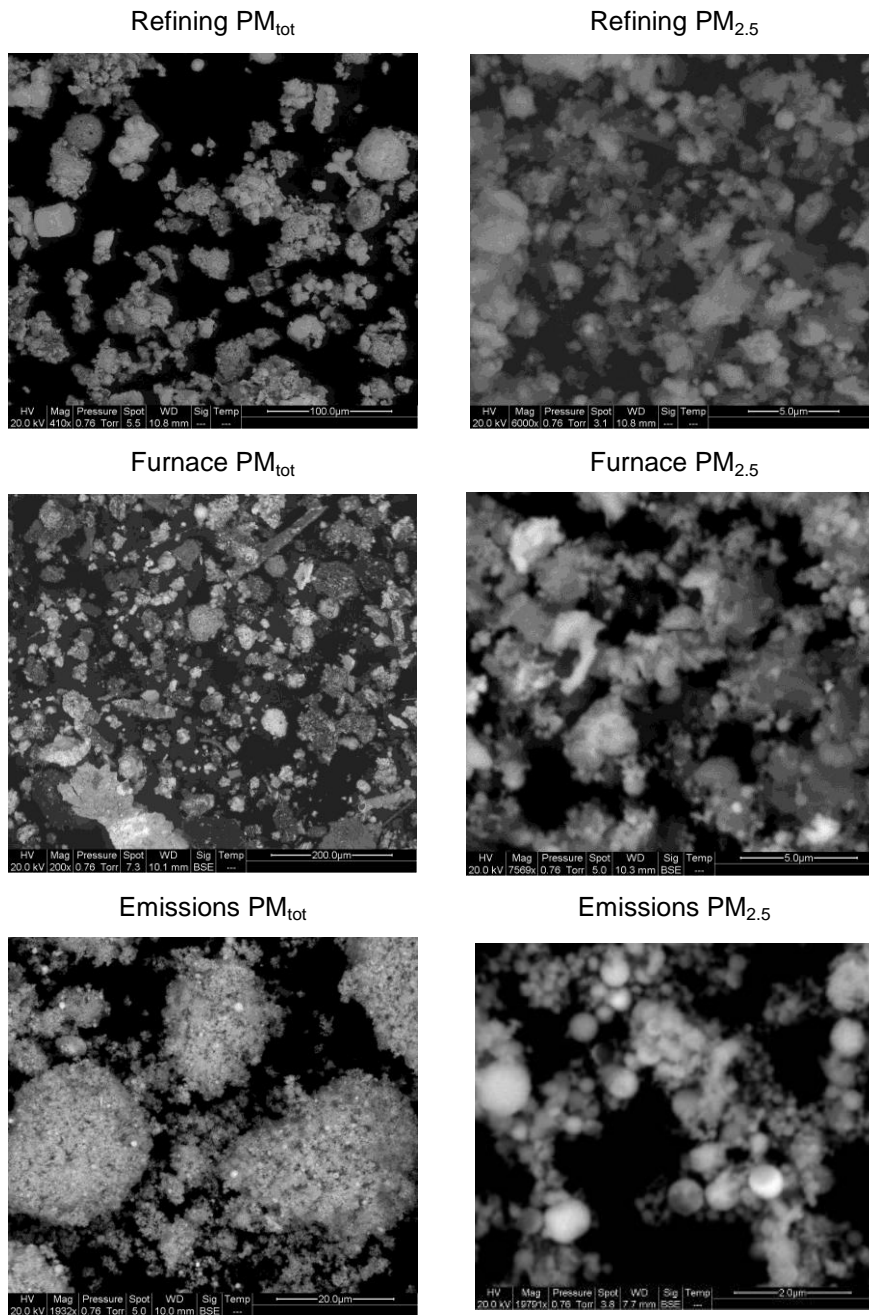


Figure-3

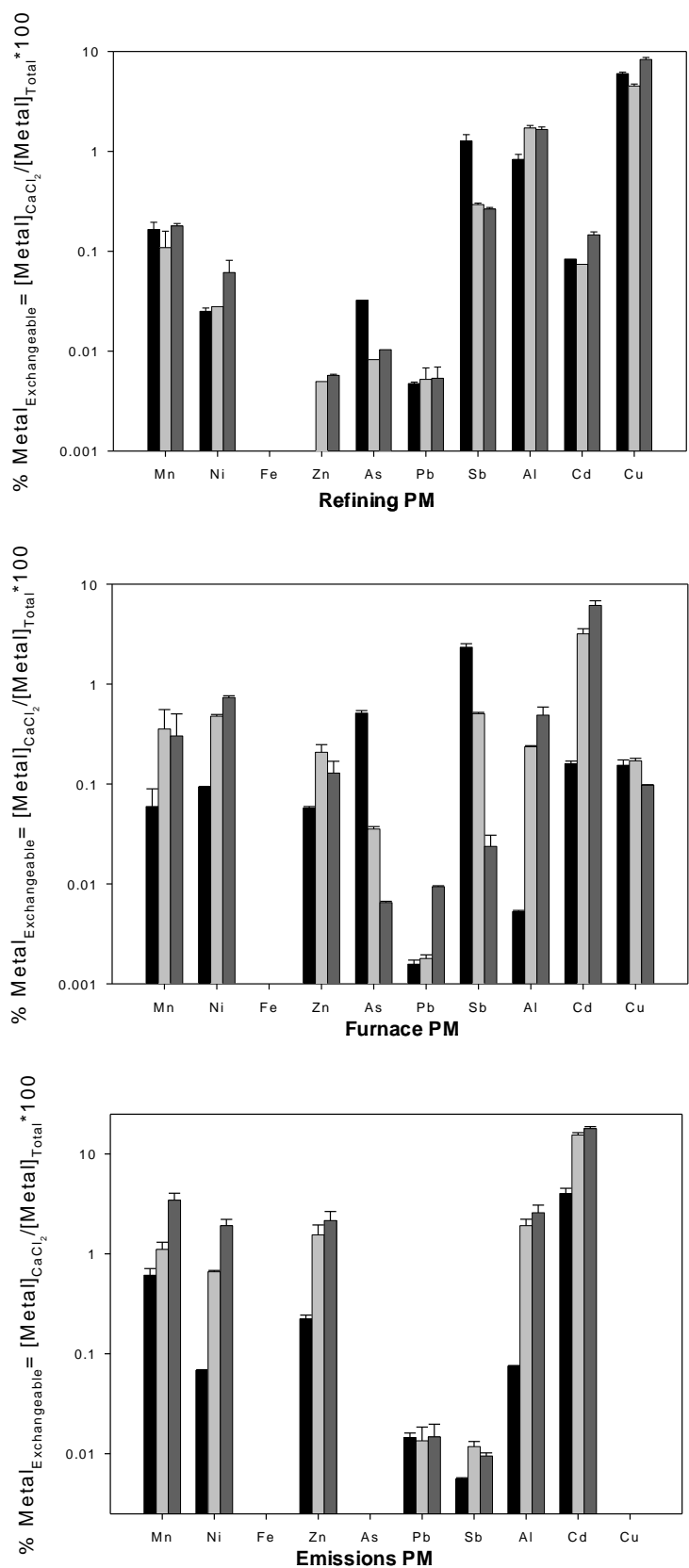
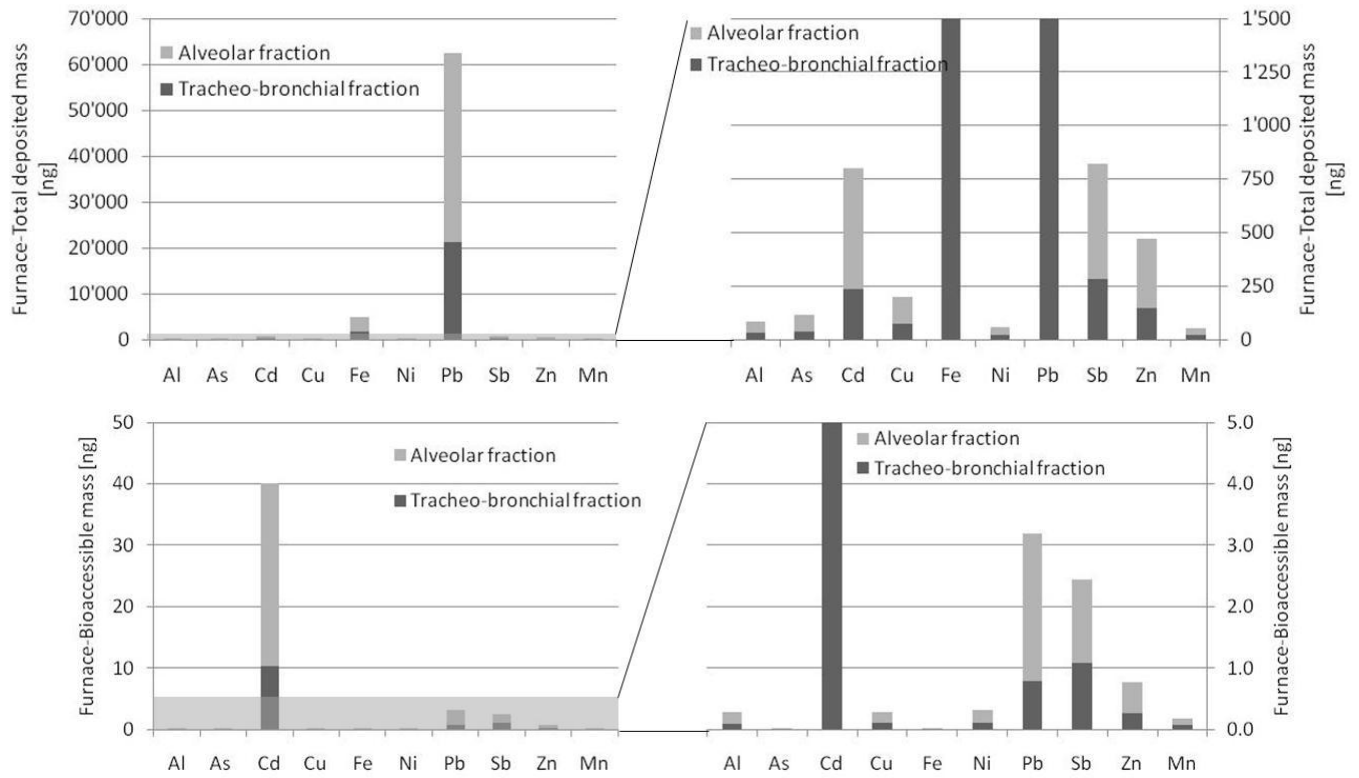


Figure-4

A. Furnace



B. Refining

