



HAL
open science

Few Graphene layer/Carbon-Nanotube composite Grown at CMOS-compatible Temperature

V. Jousseume, J. Cuzzocrea, N. Bernier, Vincent Thomas Francois Renard

► **To cite this version:**

V. Jousseume, J. Cuzzocrea, N. Bernier, Vincent Thomas Francois Renard. Few Graphene layer/Carbon-Nanotube composite Grown at CMOS-compatible Temperature. Applied Physics Letters, 2011, 98, pp.123103. 10.1063/1.3569142 . hal-00558867

HAL Id: hal-00558867

<https://hal.science/hal-00558867>

Submitted on 24 Jan 2011

HAL is a multi-disciplinary open access archive for the deposit and dissemination of scientific research documents, whether they are published or not. The documents may come from teaching and research institutions in France or abroad, or from public or private research centers.

L'archive ouverte pluridisciplinaire **HAL**, est destinée au dépôt et à la diffusion de documents scientifiques de niveau recherche, publiés ou non, émanant des établissements d'enseignement et de recherche français ou étrangers, des laboratoires publics ou privés.

Few Graphene layer/Carbon-Nanotube composite Grown at CMOS-compatible Temperature

V. Jousseau^{1,*}, J. Cuzzocrea¹, N. Bernier¹, and V. T. Renard^{1,2}

¹CEA, LETI, Minatec, F38054 Grenoble, France

²Institut Néel, CNRS-UJF, BP 166, 38042 Grenoble, France

(Dated: January 24, 2011)

We investigate the growth of the recently demonstrated composite material composed of vertically aligned carbon nanotubes capped by few graphene layers. We show that the carbon nanotubes grow epitaxially under the few graphene layers. By using a catalyst and gaseous carbon precursor different from those used originally we establish that such unconventional growth mode is not specific to a precise choice of catalyst-precursor couple. Furthermore, the composite can be grown using catalyst and temperatures compatible with CMOS processing ($T < 450$ °C).

The limitations of copper interconnects are driving research towards alternative materials and technologies for the next-generation of Integrated Circuits (ICs). Carbon nanomaterials, with their many attractive properties, are emerging as the frontrunners to potentially replace copper for interconnects and passive devices in ICs, including vias, through-silicon vias (TSVs) and horizontal wires [1–4]. Indeed, low-dimensional allotropes of carbon (in particular, carbon nanotubes (CNTs) and graphene) have extraordinary physical properties because of their unique structure. Contrary to copper, CNTs can accept a high current density and can have an extremely high thermal conductivity [5, 6]. Graphene has the potential for very high electrical conductivity [7]. Beside these advantages for interconnects technology, Field Effect Transistors have been demonstrated on CNTs and graphene.[8, 9] It could be very interesting to combine these advances in interconnects and transistor technologies in an *all carbon* electronics. The success of such approach could strongly depend on the ability to assemble them in working devices. Recently, Fujitsu Corp. has demonstrated the possibility of building carbon interconnect structures combining CNTs and few graphene layers[10](these structures will be referred to as “composite” in the following). This approach of binding CNTs and few-layer graphene during the growth itself maybe a powerful method to produce CNT/graphene hybrid systems.

Here, we show that such composite is composed of CNTs epitaxially grown below the few graphene layers. We demonstrate that the composite can be obtained independently of the choice of the precursor and catalyst indicating that this unusual growth mode is in fact quite general. Furthermore, we achieved growth using catalyst and temperatures compatible with Back End of Line (BEOL) processing. This opens new possibilities concerning its integration in next generations of interconnects.

Figure 1 shows Scanning Electron Microscope (SEM)

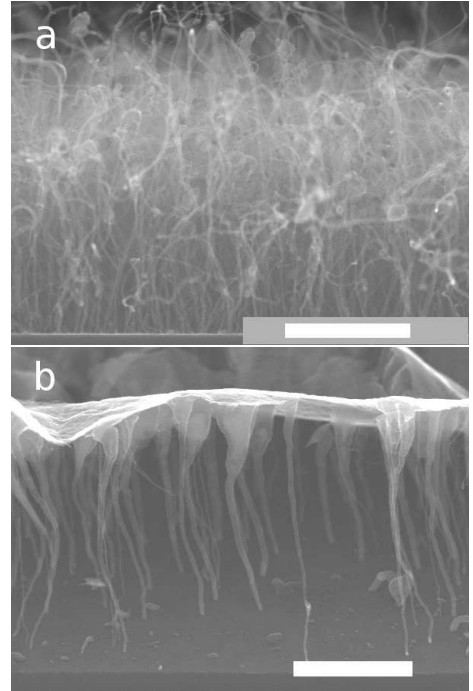


FIG. 1. Result of the CDV growth at 550 °C during 30 minutes. a) Prior to growth, Argon was flown in the chamber during 30 minutes. Then propylene was introduced at 30 Torr. b) Propylene was introduced in the chamber without argon pretreatment. The scale bar is 1 μm in both images.

images of the product of Chemical Vapour Deposition (CVD) on a 6 nm thick nickel film. The growth was performed at 550 °C in an Applied Material 200 mm DXZ chamber using propylene (C_3H_6) as carbon source. The Ni film was deposited by Physical Vapour Deposition on a 10 nm TiN layer deposited by CVD on a standard silicon 200 mm wafer. Depending on the pretreatment (initial step before the introduction of propylene) very different results are obtained. On one hand, with a pre-treatment consisting of an argon flow during 15 minutes, carbon nanotubes are obtained (Figure 1a). The nanotubes are multiwall with catalyst at the tip and about 10 nm in diameter (not shown). On the other hand, in absence

*vincent.jousseau@cea.fr

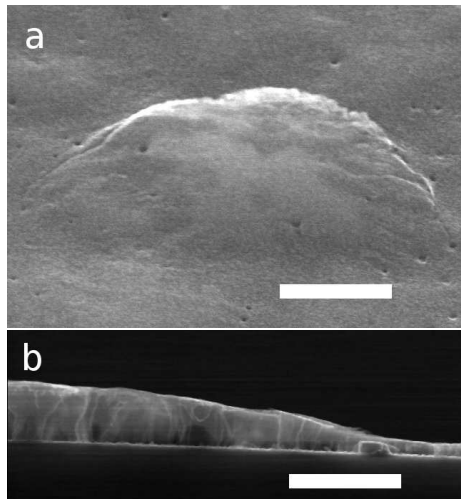


FIG. 2. Initial stage of the composite growth. The images are taken after growth in the same condition as in Fig. 1a but the growth lasted 5 minutes instead of 30 minutes. a) Top view of the sample showing a bump below which CNT growth has started. b) Side view of such bump illustrating the presence of nanotubes.

of pre-treatment a complex nanostructure composed of a forest of nanotubes with a thin layer bonded on top of it is formed (Figure 1b).

A similar nanostructure was observed by Kondo and colleagues by CVD at 510 °C using cobalt as catalyst and acetylene (C_2H_2) as carbon precursor.[10] They proposed the following mechanism for the growth of this composite. When a substrate with a catalyst film is heated in presence of carbon precursor, the catalytic film first decomposes the source gas while remaining in its thin-film structure. This leads to the formation of few graphene layers on the catalyst. Second, the catalyst film breaks into particles. Third, multi-wall CNTs are synthesized from catalyst particles by the tip growth mode.

Multi- and single graphene layers are quite well known to form on Nickel films.[11–15] Carbon nanotubes are also well known to grow from Nickel nanoparticles.[16–18] It is therefore surprising that the composite has not yet been reported on Ni. This fact, together with our observations already indirectly confirms the scenario proposed by Kondo and colleagues.[10] Indeed, in the CNT community, very thin Ni layers (1 nm or less) are dewetted into small droplets that subsequently catalyze the nanotube growth. The thinner the film the smaller the particles and therefore the thinner the nanotubes. This is important because the goal here is to synthesize the thinnest nanotubes which are more likely to show interesting effects such as quantum confinement.[19] On the contrary, in the graphene community relatively large Ni thicknesses (typically larger than 100 nm) are used since one wants to avoid a discontinuous graphene layer due to dewetting. We used a catalyst layer of intermediate thickness (few nanometre) which may represent a better

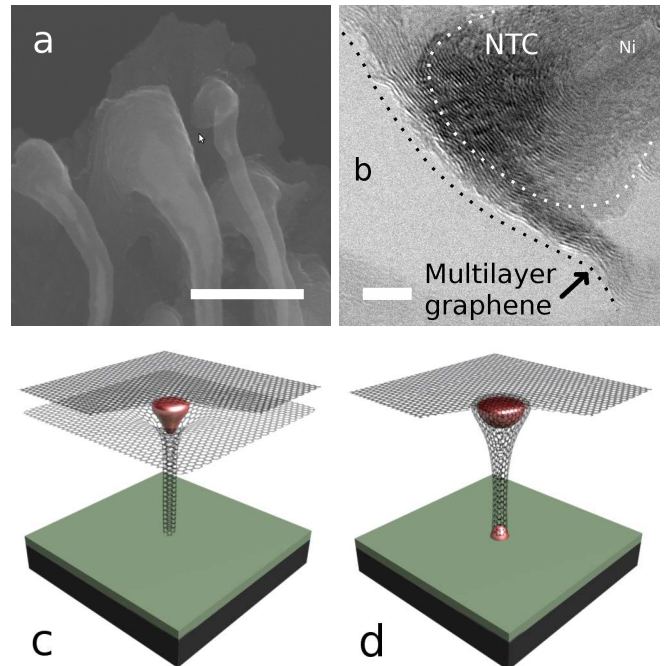


FIG. 3. a) Connexion between nanotubes and multilayer-graphene viewed from below by SEM. Ni catalyst can be seen in the NTCs. The scale bar is 300nm. b) HRTEM image of the carbon-nanotube/multilayer-graphene interface. The dotted lines are guides for the eyes to localize the nanotube tip and the multilayer graphene sheet. The scale bar is 5 nm. c) and d) Sketch of the two possible arrangement for the CNT/multilayer-graphene interface. The red particles represent the catalyst. Our result indicate that the interface corresponds to the configuration depicted in d) and that the nanotubes grow from their root.

compromise between the necessity to keep the catalyst film intact during multilayer-graphene growth and the necessary dewetting after some time to start nanotube growth.

This is confirmed by the observation that when the Nickel film is intentionally dewetted using argon pre-treatment only nanotubes are formed. This is also confirmed by the SEM images taken at the initial stages of the growth. After 5 minutes of growth under the same conditions as in Figure 1a there is an extended carbon film at the surface of the sample. In some places the catalyst has already dewetted and the CNTs growth has started. This is evidenced by bumps at the surface and cracks from which it is possible to see nanotubes below the film (See Figure 2). Therefore our observation clearly establishes that the few graphene layers form first.

Figure 3 presents SEM and High Resolution Transmission Microscope (HRTEM) image of the junction between a nanotube and the graphene layers. The composite has been collected on an amorphous carbon TEM grid for HRTEM investigations. The nanotube are epitaxial under less than 10 layers of graphene. In the previous study,[10] there were indications that the nanotube origi-

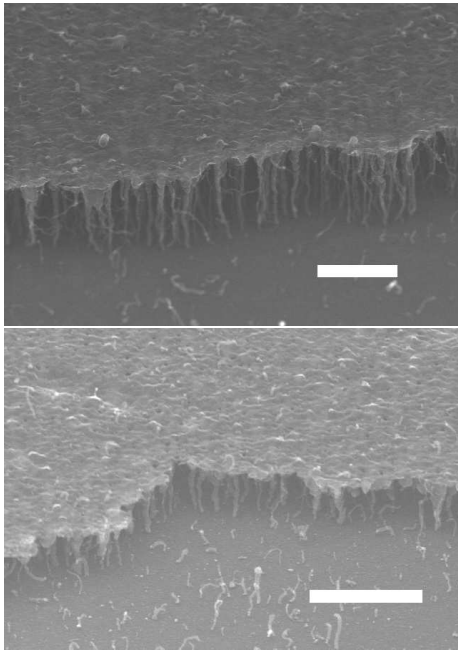


FIG. 4. Impact of the deposition temperature on the composite growth. a) Growth at 450 °C. b) growth at 400 °C. In both cases a 15 minutes pretreatment with Argon was made prior the growth under 15 Torr of C_3H_6 during 15 minutes. The scale bar is 600 nm for both images

inated from holes in the first graphene layer forming a trumpet like structure (Fig. 3c). Figure 3a clearly illustrates that in our case closed nanotubes are in fact epitaxially formed under the graphene layers (Sketched in Fig. 3d). The shape of this interface may therefore depend on the experimental conditions. This will have to be deeply investigated since it can have important consequences concerning electrical contact between the nanotube and the graphene layers. Indeed, the contact resistance can be expected to be larger than in a configuration where the nanotube gradually transforms into a flat graphene sheet. Still, the contact electrical resistance should be reasonable given that the graphene orientation in the nanotube and the multilayer graphene should match due to their epitaxial relation.[20] This will have to be studied by electrical measurements. The fact that the nanotube is closed by a relatively important number of graphene layers suggests that NTCs grow from the

root and not from their tip. Indeed, growth stops whenever the catalyst is completely encapsulated.[17] The reduction of their diameter towards the substrate can be attributed to the loss of catalysing material during the catalyst elongation/contraction process occurring during CNT growth.[17]

Some key points in this mechanism remain unclear. In particular, why does the catalyst film break into particles after some time? In the context of CNTs, it is established that Nickel atoms exhibit fast self-diffusivity in presence of graphene interface.[17, 18] At the initial stage of CNT formation, graphene layers grow at the catalyst step edges and catalyst atoms rapidly move toward the graphene free region. This causes an elongation of the catalyst until the energy gained when binding the graphitic fibre to the Ni surface no longer compensates the increase in the Ni surface energy. At this moment, the catalyst collapses into a more or less round particle.[17] We believe an analogous rapid diffusion of nickel atoms occurs in our case leading to the formation of catalyst particles, although we do not have direct evidences. Another key question concerns the way the organic precursor is provided to the catalyst after the graphitic film is formed. Indeed, graphene is a good barrier to gas diffusion[21] and nanotube CVD growth stops when the catalyst particle is encapsulated.[17] These questions will have to be investigated by *in-situ* measurements to fully determine the detailed growth process.

We have also investigated the possibility to grow such type of composite at lower temperatures. This point is critical in the case of the co-integration of these carbon structures with CMOS architecture at the interconnection levels since the maximum temperature acceptable during the device fabrication is 450 °C. As can be seen on Figure 4, composites are also obtained at temperatures as low as 400 °C. Note that at these temperatures, dewetting does not occur as easily as at 550 °C and the initial pretreatment with argon is necessary to achieve the composite. This is not surprising since Ni self-diffusion should be slower at lower temperatures. As expected, the lower the temperature, the shorter the CNTs. It appears that the quality of the multi-layer graphene film degrades with decreasing temperature as seen from the number of visible defects on the SEM pictures.

VTR acknowledges the support from Nanoscience fundation of Grenoble.

-
- [1] F. Kreupl *et al. Microelec. Eng.* **64**, 399 (2002).
 - [2] M. Nihei *et al. in Proc. IEEE Int. Interconnect Technol. Conf.* Jun. 2005, 234 (2005).
 - [3] Y. Awano *IEICE Trans. Electron.* **E89C**, 1499 (2006).
 - [4] T. Wang, K. Jeppson, N. Olofsson, E.E.B. Campbell, J. Liu *Nanotechnology* **20**, 485203 (2009).
 - [5] Z. Yao, C. L. Kane, C. Dekker *Phys. Rev. Lett.* **84**, 2941 (2002).
 - [6] P. Kim, L. Shi, A. Majumdar, P.L. McEuen *Phys. Rev. Lett.* **87**, 215502 (2001).
 - [7] P. Neugebauer, M. Orlita, C. Faugeras, A.-L. Barra, M. Potemski *Phys. Rev. Lett.* **103**, 136403 (2009).
 - [8] S. J. Tans, A.R.M. Verschueren, C. Dekker *Nature* **393**, 49 (1998).
 - [9] Y. M. Lin *et al. Science* **327**, 662 (2010).
 - [10] D. Kondo, S. Sato, Y. Awano *Appl. Phys. Express* **1**,

- 074003 (2008).
- [11] Y. Gamo, A. Nagashima, M. Wakabayashi, M. Terai, C. Oshima *Surf. Sci* **374**, 61 (1997).
- [12] Q. Yu, J. Lian, S. Siriponglert, H. Li, Y. P. Chen, and S.-S. Pei *Appl. Phys. Lett.* **93**, 113103 (2008).
- [13] A. Reina *et al. Nano Lett.* **9**, 30 (2009).
- [14] A.J. Pollard *et al. J. Phys. Chem. C* **113**, 16565 (2009).
- [15] K. S. Kim *et al. Nature* **457**, 706 (2009).
- [16] Z. F. Ren *et al. Appl. Phys. Lett.* **75**, 1086 (1999).
- [17] S. Helveg *et al. Nature* **427**, 426 (2004).
- [18] S. Hofmann *et al. Nano Lett.* **7**, 602 (2007).
- [19] D. Frank, P. Poncharal, Z. L. Wang, W. A. De Heer. *Science* **280**, 1744 (1998).
- [20] S. Paulson, A. Helsen, M. B. Nardelli, R. M. Taylor, M. Falvo, R. Superfine, S. Washburn *Science* **290**, 1742 (2000).
- [21] J. S. Bunch *et al. Nano Lett.* **8**, 2458 (2008).