



HAL
open science

Experimental and numerical study on the perforation process of mild steel sheets subjected to perpendicular impact by hemispherical projectiles

A. Rusinek, J.A. Rodríguez-Martínez, R. Zaera, J.R. Klepaczko, A. Arias, C. Sauvelet

► To cite this version:

A. Rusinek, J.A. Rodríguez-Martínez, R. Zaera, J.R. Klepaczko, A. Arias, et al.. Experimental and numerical study on the perforation process of mild steel sheets subjected to perpendicular impact by hemispherical projectiles. *International Journal of Impact Engineering*, 2009, 36 (4), pp.565. 10.1016/j.ijimpeng.2008.09.004 . hal-00558629

HAL Id: hal-00558629

<https://hal.science/hal-00558629>

Submitted on 23 Jan 2011

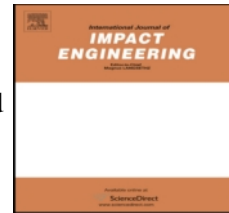
HAL is a multi-disciplinary open access archive for the deposit and dissemination of scientific research documents, whether they are published or not. The documents may come from teaching and research institutions in France or abroad, or from public or private research centers.

L'archive ouverte pluridisciplinaire **HAL**, est destinée au dépôt et à la diffusion de documents scientifiques de niveau recherche, publiés ou non, émanant des établissements d'enseignement et de recherche français ou étrangers, des laboratoires publics ou privés.

Accepted Manuscript

Title: Experimental and numerical study on the perforation process of mild steel sheets subjected to perpendicular impact by hemispherical projectiles

Authors: A. Rusinek, J.A. Rodríguez-Martínez, R. Zaera, J.R. Klepaczko, A. Arias, C. Sauvelet



PII: S0734-743X(08)00230-3
DOI: [10.1016/j.ijimpeng.2008.09.004](https://doi.org/10.1016/j.ijimpeng.2008.09.004)
Reference: IE 1702

To appear in: *International Journal of Impact Engineering*

Received Date: 29 November 2007
Revised Date: 29 March 2008
Accepted Date: 11 September 2008

Please cite this article as: Rusinek A, Rodríguez-Martínez JA, Zaera R, Klepaczko JR, Arias A, Sauvelet C. Experimental and numerical study on the perforation process of mild steel sheets subjected to perpendicular impact by hemispherical projectiles, *International Journal of Impact Engineering* (2008), doi: 10.1016/j.ijimpeng.2008.09.004

This is a PDF file of an unedited manuscript that has been accepted for publication. As a service to our customers we are providing this early version of the manuscript. The manuscript will undergo copyediting, typesetting, and review of the resulting proof before it is published in its final form. Please note that during the production process errors may be discovered which could affect the content, and all legal disclaimers that apply to the journal pertain.

Experimental and numerical study on the perforation process of mild steel sheets subjected to perpendicular impact by hemispherical projectiles

A. Rusinek^{1,*}, J. A. Rodríguez-Martínez², R. Zaera², J. R. Klepaczko³, A. Arias²,
C. Sauvelet³

¹ National Engineering School of Metz (ENIM), Laboratory of Mechanical Reliability (LFM), Ile du Saulcy, 57000 Metz, France

² Department of Continuum Mechanics and Structural Analysis, University Carlos III of Madrid, Avda. de la Universidad 30, 28911 Leganés, Madrid, Spain

³ Laboratory of Physic and Mechanic of Materials, UMR CNRS 75-54, University Paul Verlaine of Metz, Ile du Saulcy, 57045 Metz cedex, France

Abstract.

In this paper a study is presented on experimental and numerical analysis of the failure process of mild steel sheets subjected to normal impact by hemispherical projectiles. The experiments have been performed using a direct impact technique based on Hopkinson tube as a force measurement device. The tests covered a wide range of impact velocities. Both lubricated and dry conditions between specimen and projectile have been applied. Different failure modes for each case were found. For lubricated conditions a petalling was observed, whereas for dry conditions a radial neck along with a hole enlargement reduces the formation of petalling. The perforation process has been simulated by application of 3D analysis using ABAQUS/Explicit FE code. The material behavior of circular specimen was approximated by three different constitutive relations. The main task was to study the influence of the material definition on the response of the sheet specimen with special attention to the failure mode.

Keywords: Numerical simulation, Perforation, Petalling, Ductile failure, RK model, Dynamic behavior

1 - Introduction

The response of materials under dynamic loading has a considerable interest. It allows for clarification of several problems in different application fields such as civil, military, aeronautical and automotive engineering. In particular, many studies on behavior of steels subjected to high strain rate concentrated in the past a large amount of efforts [1-9].

The extreme case of a material subjected to high strain rate solicitation is generally observed during impact or explosion. Thus, in many cases the strain rate level observed in a structure can be higher than $\dot{\epsilon} \geq 10^4 \text{ s}^{-1}$. In addition, it is observed locally a strong temperature increase by adiabatic heating which triggers a thermal softening of material.

A special interest has been focused on the perforation resulting from an impact between non-deformable projectiles and metallic plates, [10-18]. During such kind of impact loading, petalling as a failure mode commonly appears when ogival, conical or hemispherical projectiles are applied, [19-23].

This paper is dedicated to our friend, Professor Janusz Roman Klepaczko who passed away on August 15, 2008, for his pioneer contribution in the area of dynamic behaviour of materials.

The failure mode appears to be strongly dependent on the impact velocity. Petalling can be replaced by failure mode of crack opening when impact velocity is close to the ballistic limit. In this situation a decrease of the circumferential strain slows the crack progression [22]. Moreover, when the impact velocity is very high, the perforation process is governed by inertia effects and the failure mode changes from petalling to complete fragmentation of the zone affected by impact, inducing appearance of debris cloud as final stage [10, 24]. Teng et al. [7] have also observed the influence of the impact velocity on the failure mode during Taylor tests performed with Weldox 460 E steel cylinders. At relatively low impact velocity no external cracks appeared in the specimen impacted. On the contrary, for high initial impact velocity formation of several radial cracks were observed propagating rapidly and causing formation of petals.

Therefore, to define properly the transition between these different failure modes appearing when hemispherical projectiles are used, it is necessary to define precisely material's behavior since all these processes are strongly depend upon strain hardening $\bar{\epsilon}_p$, strain rate $\dot{\bar{\epsilon}}_p$ and temperature increase T responsible for thermal softening.

In order to define the behavior of steel under dynamic and complex state of stress, several constitutive relations can be found in the international literature [25-32]. A precise analysis concerning this topic can be found in the works of Liang and Khan [33] and Rusinek et al. [34].

In present work an experimental and numerical analysis of the impact behavior of sheets of mild steel subjected to perpendicular impact by hemispherical projectiles are reported. The experiments have been carried out at the Laboratory of Physics and Mechanics of Materials (LPMM) of Metz University using a Hopkinson tube as a transducer to measure the transmitted force [35]. Both lubricated and dry conditions have been applied to the contact between hemispherical projectile and specimen inducing different failure modes for each case. Thus, for lubricated condition petalling process was observed, while the petalling was reduced to a circumferential notch for dry condition.

The finite element code ABAQUS/Explicit has been used to simulate the impact process. An axi-symmetric mesh configuration is commonly used to model this kind of penetration problems, mainly in order to reduce large computational time due to small element size required. However, this simplification does not allow reproducing precisely the failure mode discussed previously since petalling is not a symmetric

process of failure, Fig. 1. In the present case, the problem was solved by 3D simulations allowing a complete analysis of the problem.

Three constitutive relations, Johnson-Cook (**JC**), Rusinek-Klepaczko (**RK**) and a power of strain hardening (**PL**) [36] have been used to define the plastic behavior of material. The use of different constitutive models allows for evaluation of the influence of material's definition on the dynamic response of plates and on simulation of the failure modes. The analysis has been focused on the failure mode definition depending on dry or lubricated conditions which were applied. A wide range of impact velocities was assumed.

2 - Experimental setup

To analyze failure behavior of a steel sheet subjected to normal impact for a maximum velocity of $V_0^{\max} \approx 100$ m/s, an original experimental set-up has been developed [35, 37-38]. This experiment is based on the RM Davies bar concept by application of Hopkinson tube, Fig. 2. With that arrangement it is possible to determine the force $F(t)$ applied to the specimen during perforation process through the measurement of the transmitted elastic wave $\varepsilon_T(t)$.

Moreover, black-white stripes cemented on the projectile surface enabled to record large displacements imposed onto the steel sheet specimen δ_p during perforation. The details are given below. Two optical fibers transmit the light and the third one transmits the reflected light from the projectile stripes to a photodiode. A system with three optical fibers coupled with two time counters enables to determine the impact velocity V_0 at the instant of impact. The acceleration/deceleration of the projectile can be determined with precision. The projectile used in this configuration had a hemispherical shape with a diameter of $d_p = 22$ mm and a mass of $M_p = 0.154$ kg. The specimen has a thickness of $t_{\text{specimen}} = 0.8$ mm, an effective diameter of $\phi_{\text{effective}} = 30$ mm and a total diameter of $\phi_{\text{specimen}} = 50$ mm. During the test it is possible to prepare dry or lubricated conditions using in the last case several layers of grease and Teflon foil, [37].

The time history of the force $F(t)$ transmitted by the specimen support into the tube is defined by the following relation:

$$F(t) = \frac{\pi E (D^2 - d^2)}{4} \varepsilon_T(t) \quad (1)$$

where E is the Young's modulus of the tube, D and d are respectively the external and internal diameters of the Hopkinson tube ($d = \phi_{\text{effective}}$ and $D = \phi_{\text{specimen}}$).

The displacement imposed during perforation is obtained by decoding the signals from the photodiode in the form of maxima corresponding to the white stripes on the projectile, Fig. 3. The width of white and black stripes can be chosen by user, typical range from 0.1 mm. to 0.5 mm. This principle is based on the frequency coding of displacement [39]

The total displacement is obtained using the following equation, Eq. 2, with the time signal, Fig. 3

$$\delta_p(t) = n\lambda - C_0 \int_0^t \varepsilon_T(\zeta) d\zeta \quad (2)$$

where n is the number of maxima measured during the process of perforation, Fig. 3, and C_0 is the elastic wave velocity in the tube. Details of this experimental technique are reported in [35, 37-38] for low and high velocities using a fast hydraulic machine and a Hopkinson tube technique.

Typical experimental results in the form specimen pictures and $F(t)$ records are shown in Fig.4. The cases shown in Fig.4 are for the impact velocities above the ballistic limit. The comparison shows substantial differences in specimen behavior in terms of failure using dry or lubricated conditions. In the case of dry condition a plug ejection is observed during loading, Fig. 4-c

Using experimental results, a numerical study is performed to analyze constitutive relation and failure mode effects.

3 - Modeling of dynamic behavior of mild steel and implementation into FE code

Mild steel ES is a ferritic steel with an average grain size of $\phi = 16\mu\text{m}$. It has a particular interest since many results are available in the international literature permitting to identify material constants in any constitutive relation – see **Appendix A** – [5, 40-41]. The behavior of the mild steel is assumed as a reference since it has been tested by a number of laboratories in recent decades. Typical mild steel assumed in this study is characterized below (ES steel). The chemical composition in weight of this material is reported in Tab. 1. It must be noticed that all specimens used to perform the tests of characterisation and perforation were machined from the same plate. Different

tests have been performed with this material in tension, shear and perforation at different strain rates, temperatures and also loading paths. As consequence of the experiments it was concluded that the material presented isotropic behaviour

To approximate the dynamic behavior of that material several constitutive relations can be used depending on the application and the required information. Thus, in this paper three constitutive relations have been applied: two phenomenological and one semi-physical. The goal was to analyze their effects on the prediction of the failure process during impact perforation using the same failure criterion.

3.1 - Phenomenological approach I

The first constitutive relation used in this work to analyze perforation process is a power law (**PL**) which takes into account strain hardening $\bar{\epsilon}_p$, strain rate $\dot{\bar{\epsilon}}_p$ and temperature sensitivity T . The explicit formulation of the constitutive relation is defined by:

$$\bar{\sigma}(\bar{\epsilon}^p, \dot{\bar{\epsilon}}^p, T) = B(\bar{\epsilon}_p)^n (\dot{\bar{\epsilon}}_p)^m T^{-\nu} \quad (3)$$

where B is the material constant characterizing of the stress level, n , m and ν are respectively the hardening exponent, strain rate and temperature sensitivities. Although non-linear strain rate sensitivity is considered, this constitutive equation cannot be used within a complete spectrum of strain rates and values of m must be decomposed in several ranges, Fig.5. Thus, in the present study two different sets of constants have been used, the first one corresponding to low strain rates (**PLI**) and the second to high strain rates (**PLII**) (**Appendix A**). To compare FE analyses with application of this simple phenomenological approach, another phenomenological approach have been used as it is discussed in the next part of this paper.

3.2 - Phenomenological approach II

The second thermo-visco-plastic constitutive relation is the one due to Johnson-Cook (**JC**), frequently applied to analyze the dynamic behavior of materials [15-17, 42-44]. This constitutive relation is generally pre-implemented in FE codes, including ABAQUS/Explicit. The **JC** constitutive relation is defined by Eq.4. The first term defines strain hardening $\bar{\epsilon}_p$, the second strain rate sensitivity, $\dot{\bar{\epsilon}}_p$ via the constant C and the third one is related to thermal softening T , Eq.4 and 5.

$$\bar{\sigma}(\bar{\varepsilon}^p, \dot{\bar{\varepsilon}}^p, T) = [A + B(\bar{\varepsilon}^p)^n] \left[1 + C \ln\left(\frac{\dot{\bar{\varepsilon}}^p}{\dot{\varepsilon}_0}\right) \right] (1 - \Theta^m) \quad (4)$$

$$\Theta = \frac{T - T_0}{T_m - T_0} \quad (5)$$

where A and B are material constants, n is the strain hardening exponent, m is the temperature sensitivity, T₀ is the initial temperature and T_m is the melting temperature.

As this material shows non-linear strain rate sensitivity, Fig.5, it is not possible to define it correctly with one set of parameters by Eq.4. Thus, the strain rate sensitivity must be defined separately in **JC** equation in several ranges. In present work, as previously proposed for **PL**, two ranges have been used, one corresponding to low strain rates (**JCI**), the second one for high strain rates (**JCII**) (**Appendix A**). A comparison is reported in Fig.5. By using these two different strain rate constants in **JC** equation it is possible to define the strain rate behavior of the material from quasi-static to dynamic loading. The two values of the rate sensitivity C were used during numerical simulations to analyze how the value of the strain rate sensitivity can modify the results in terms of force level, residual velocity, ballistic limit and failure process.

It must be notice that recently the **JC** constitutive relation, Eq. 6 has been modified by introduction of non-linear terms in approximation of the rate sensitivity, [45] to avoid the problem described previously (**2 sets of constants**). This, modified form is given by:

$$\sigma = [A + B(\bar{\varepsilon}^p)^n] \left[1 + C \ln \dot{\varepsilon}^* + C_2 (\ln \dot{\varepsilon}^*)^{C_3} \right] [1 - T^{*m}] \quad (6)$$

where C₂ and C₃ are the new material constants allowing to define a non-linear strain rates sensitivity. However, this formulation has not been used in the present study since it is not usually pre-implemented in FE commercial codes, including ABAQUS/Explicit.

In order to complete the study a third model has been used during numerical simulations. This approach called **RK** constitutive relation is based on some physical aspects taking into account thermally activated processes in plasticity which are related to dislocation dynamics, for example [30, 46].

3.3 - Semi-physical approach

The last model, called **RK** constitutive relation (Rusinek-Klepaczko) is described in detail in [32]. The total stress is decomposed into two parts, Eq. 7

$$\bar{\sigma}(\bar{\epsilon}^p, \dot{\bar{\epsilon}}^p, T) = \frac{E(T)}{E_0} [\sigma_\mu(\bar{\epsilon}^p, \dot{\bar{\epsilon}}^p, T) + \sigma^*(\dot{\bar{\epsilon}}^p, T)] \quad (7)$$

where σ_μ is the internal stress and σ^* is the effective stress. In this relation the Young's modulus $E(T)$ depends on temperature, Eq.8. The explicit formulation introduced by [47] is given by:

$$E(T) = E_0 \left\{ 1 - \frac{T}{T_m} \exp \left[\theta^* \left(1 - \frac{T}{T_m} \right) \right] \right\} \quad (8)$$

where E_0 is the Young's modulus at zero Kelvin, T_m is the melting temperature and θ^* is a material constant, characteristic of homologous temperature.

The explicit form of the two stress components are the following, Eqs 9-10,

$$\sigma_\mu(\bar{\epsilon}^p, \dot{\bar{\epsilon}}^p, T) = B(\dot{\bar{\epsilon}}^p, T) (\epsilon_0 + \bar{\epsilon}^p)^{n(\dot{\bar{\epsilon}}^p, T)} \quad (9)$$

$$\sigma^*(\dot{\bar{\epsilon}}^p, T) = \sigma_0^* \left\langle 1 - D_1 \left(\frac{T}{T_m} \right) \log \left(\frac{\dot{\bar{\epsilon}}^{\max}}{\dot{\bar{\epsilon}}^p} \right) \right\rangle^{m^*} \quad (10)$$

ϵ_0 is the strain level which defines the yield stress at specific strain rate and temperature, $B(\dot{\bar{\epsilon}}^p, T)$ is the modulus of plasticity, $n(\dot{\bar{\epsilon}}^p, T)$ is the strain hardening exponent of the material, σ_0^* is the effective stress at $T=0K$, D_1 is the material constant, $\dot{\bar{\epsilon}}^{\max}$ is the upper limit of the constitutive relation in terms of strain rate and m^* is the constant allowing to define the strain rate-temperature dependency [36].

The modulus of plasticity and the strain hardening exponent are defined by, Eqs 11-12:

$$B(\dot{\bar{\epsilon}}^p, T) = B_0 \left\langle \left(\frac{T}{T_m} \right) \log \left(\frac{\dot{\bar{\epsilon}}^{\max}}{\dot{\bar{\epsilon}}^p} \right) \right\rangle^{-v} \quad (11)$$

$$n(\dot{\bar{\epsilon}}^p, T) = n_0 \left\langle 1 - D_2 \left(\frac{T}{T_m} \right) \log \left(\frac{\dot{\bar{\epsilon}}^p}{\dot{\bar{\epsilon}}^{\min}} \right) \right\rangle \quad (12)$$

where B_0 is the material constant, v is the temperature sensitivity, n_0 is the strain hardening exponent at $T=0K$, D_2 is the material constant and $\dot{\bar{\epsilon}}^{\min}$ is the lower limit of the constitutive relation in terms of strain rate $\dot{\bar{\epsilon}}^{\min} \approx 10^{-4} s^{-1}$. In Fig. 5 it is shown the good correlation of the strain rate sensitivity predicted by **RK** with the experimental results. The maximum equivalent strain rate reached during the material characterization tests was $\dot{\bar{\epsilon}} = 2800 s^{-1}$. Moreover, this level is comparable to the

maximum strain rate value obtained in the numerical simulations carried out. Thus, it can be concluded that **RK** constitutive relation allows for a complete approximation of the strain rate sensitivity of the material during the perforation process, in contrast to the two approaches presented above.

An additional advantage of **RK** model in order to predict the material behaviour when subjected to high temperature and high strain rate is the assumption of strain hardening exponent n takes the general form $n = n_0 f(\dot{\epsilon}_p, T)$, where f is the weigh function. The rate and temperature sensitive strain hardening was introduced into constitutive modelling for the first time in the **RK** model [37]. This formulation means a clear advantage of **RK** model in comparison with **JC** and **PL** classic formulations in order to reproduce dynamic perforation problems.

When **PL**, **JC**, or **RK** constitutive relations are applied the adiabatic increase of temperature during the plastic deformation that triggers thermal softening can be calculated for any process, Eq.13-a. The adiabatic increase ΔT_{adia} of temperature is given by Eq.13-b

$$T_{\text{adia}} = T_0 + \Delta T_{\text{adia}} \quad (13-a)$$

$$\Delta T_{\text{adia}} = \frac{\beta}{\rho C_p} \int_{\epsilon^e}^{\epsilon^p} \sigma(\xi, \dot{\epsilon}^p, T) d\xi \quad (13-b)$$

where ρ is the density of material, β is the Taylor–Quinney coefficient [48] and C_p is the specific heat at constant pressure.

For steels, the transition between isothermal and adiabatic conditions appears generally for strain rate of the order, or higher, than 10 s^{-1} , [49]. This transition is caused by a decrease of strain hardening during plastic deformation which is responsible of a thermal softening of the material. The thermal softening triggers very frequently an instability process preceding failure. Fig.4 shows different modes of instability and failure of sheet metal specimens.

The **RK** model has already been successfully applied to study several processes of fast deformation such as perforation [32], double shear by direct impact [32], ring fragmentation under radial expansion [9], Taylor test and fast tension test [37, 50].

Both, **PL** and **RK** constitutive relations have been implemented via a VUMAT in ABAQUS-Explicit using an implicit consistent algorithm developed originally by [51]. The implementation of the **RK** model into ABAQUS/Explicit using this algorithm is reported in [34]

3.4 - Failure criterion

In order to reproduce the perforation process it is necessary to consider a failure criterion. The use of failure criteria based on an equivalent strain level is widely extended for dynamic applications. In this work a constant value of the equivalent plastic strain at failure was assumed, as was also adopted by many authors dealing with dynamic problems [9, 52, 53].

The failure strain value has been defined using several steps. The first one was to estimate the value corresponding to the Considère's criterion defined by $\partial\bar{\sigma}/\partial\bar{\epsilon}_p = \bar{\sigma}$ [54]. In order to not disturb the previous solution corresponding to the plastic instability appearance, a bigger value is taken into account. Thus, the second step was to estimate the strain level corresponding to $\partial\bar{\sigma}/\partial\bar{\epsilon}_p = 0$. The gap between these two values corresponds to the development of the necking process. Finally, a coefficient is applied to this last condition as reported by [55-57] obtaining a final failure strain level of $\epsilon_f^p = 1$. Moreover, the Considère's criterion is used since the failure mode using thin plate is mainly due to necking by tension state followed by crack propagation. Such failure criterion was also applied earlier [58-60] for dynamic tension or for ring expansion problems [50, 9]. The failure strain is estimated directly from the analysis of deformation in tension predicted by a constitutive relation along with the Considère's criterion: $(d\sigma/d\epsilon) = \sigma$.

A special attention has been done concerning the energy balance and its preservation during numerical simulations. It must be noticed that the number of elements deleted during the process as consequence of the failure criterion used is vastly reduced (**Appendix C**). The elimination of elements is restricted to the cracks propagation stage and therefore the energy balance can be considered as preserved.

3.5 - Coefficient of friction - analytical approximations combined with experimental data

The friction can modified the failure mode as it is reported in the next part of this paper. For this reason, the friction coefficient is estimated using punching experiment ~~in~~ at low and intermediate velocity. For a given displacement δ_p of the hemispherical punch, the contact area between the sheet and nose of the punch is limited by a value of the radial coordinate r_c , Fig.6. Along the contact zone, the sheet is assumed to adopt

the spherical nose shape. Experimental values of r_c can be obtained by imposing different displacements to the sheet. Therefore, as r_c depends on the projectile displacement, it also depends on the loading time.

Assuming a constant value of the normal contact pressure p and the friction coefficient μ , the condition of equilibrium of the punch tip allows to obtain the following relation between total force F , pressure and coefficient of friction

$$F = \int_0^{\theta_c} (p \cos \theta + \mu p \sin \theta) dS \quad (14)$$

where

$$dS = 2\pi R^2 \sin \theta d\theta \quad (15)$$

and θ_c is the contact angle whose value is known through r_c (for a given displacement δ_p)

$$\theta_c(\delta_p) = \sin^{-1} \left(\frac{r_c(\delta_p)}{R} \right) \quad (16)$$

Integration of Eq.14 leads to

$$F = \pi R^2 p [\sin^2 \theta_c + \mu(\theta_c - \sin \theta_c \cos \theta_c)] \quad (17)$$

The ratio ξ between the two forces corresponding to dry F_μ and lubricated F_0 conditions allows for elimination of the pressure dependency, Eq.18.

$$\xi = \frac{F_\mu}{F_0} = \frac{\sin^2(\theta_c) + \mu(\theta_c - \sin(\theta_c)\cos(\theta_c))}{\sin^2(\theta_c)} \quad (18)$$

With the knowledge of the forces ratio ξ , Eq.18, it is possible to define a range for the friction coefficient μ . The obtained force ratios for different values of μ using Eq. 18 are shown in Fig. 7. Comparing analytical predictions with experimental results, the value of μ is close to $\mu = 0.26$, notably for the contact angle $\theta_c \leq 50^\circ$.

Thus a value of $\mu = 0.26$, which corresponds to the upper limit value found Fig. 7, is used in the numerical simulations to define dry condition. In our case the dependence on the coefficient of friction with temperature and sliding velocity is not taken into account [13, 15-17, 42, 61-63]

4 - Numerical simulation with 3D approach

The plate impact problems are commonly analyzed numerically by means of axisymmetric configuration, [13, 15-17, 64-65]. This simplification permits to obtain results which encourage experimental observations in terms of ballistic limit and residual velocity for different projectile-plate experimental configuration [13, 15-17, 43, 60]. Moreover, the use of this simplification presents an advantage of increasing the mesh density without obtaining excessive computational time. However, a 3D configuration is clearly recommendable when conical, ogival or hemispherical projectiles, susceptible of inducing petalling as the final stage of perforation process, are analyzed. In order to reproduce numerically the perforation process induced by this kind of projectiles the element size is not very important as in case of cylindrical projectiles [13, 66]. Therefore, by performing an adequate mesh configuration the calculation time can be manageable. There is however a limited number of works reported in the literature where the perforation process is analyzed by 3D simulations, for example [60-61].

In the present case, the configuration used in numerical simulations is showed in Fig.8.

Both, projectile and Hopkinson tube have been modeled as rigid bodies allowing reduction of the computational time required for simulations. On the other hand, the experimental observations have revealed an absence of erosion on the projectile surface after impact. The reason is that the thin sheet specimen has a low yield stress in comparison with the projectile oil quenched.

4.1 - Target mesh strategy

The mesh used in the present paper for the target is shown Fig.9. The whole target has been meshed with 8-node tri-linear elements with reduced integration (C3D8R in ABAQUS notation [67]) and eight elements along the thickness. The number of elements was 229 792 corresponding to 259 875 nodes. The elements used to mesh the zone directly affected by impact (Zone I) had a size close to $0.1 \times 0.15 \times 0.15 \text{ mm}^3$, Fig.9. In order to not increase excessively the computational time, the element size has been increased in the zone not affected by the impact, Fig.9. (Zone II). This optimized mesh has been obtained by a convergence study making use of different mesh densities. The radial symmetry of the mesh avoids spurious generation of main directions for the appearance and progress of cracks. Therefore the position of the petals at the end of the

perforation process just depends on the constitutive relation, impact velocity and friction coefficient applied. This is shown in the next part of the paper.

Using the numerical configuration shown in Fig.8 and Fig.9 and three constitutive relations already presented, the simulations have been carried out for a wide range of impact velocity varying from: $40\text{m/s} \leq V_0 \leq 300\text{m/s}$.

5 - Analysis and results

The experimental setup developed in LPMM allows for determination of the force-time evolution, the displacement-time evolution of the projectile during perforation, the time history of the net displacement of the specimen axis and the ballistic limit. At the same time it is possible to compare the target shape after different boundary conditions of impact for both friction and non-friction experimental results. All these information have been analyzed and used to validate numerical results.

5.1 - Validation and influence of constitutive relations

The first step is to compare the value of ballistic limit V_{bl} predicted by numerical simulations with the value obtained during the experiments. Experiments showed that in the case of dry conditions the ballistic limit $V_{bl-dry} = 45\text{m/s}$ is slightly higher than in the case of lubricated contact surface $V_{bl-lub} = 40\text{m/s}$. The relation between the ballistic limit and the residual velocity of projectile corresponding to both conditions is well reproduced by the numerical simulations using all the constitutive relations considered, – see **Appendix B** –. In addition, the value of ballistic limit predicted by numerical simulation remains close to the experimental observations inside the interval: $0.9 \cdot V_{bl-exp} \leq V_{bl-num} \leq 1.1 \cdot V_{bl-exp}$ for all cases. It must be noticed however that **PL** and **RK** are the constitutive relations which predict the closer value of the ballistic limit in comparison with experimental measurements. The results obtained from the simulations with the **JC** constitutive relation are not so precise. It must be noticed that using **JCI** the numerical simulations corresponding to impact velocities under $V_0 \leq 50\text{m/s}$ are prematurely ended due to the appearance of a numerical problem avoiding complete time of calculation. Later, the failure time predicted by the numerical simulations is compared with the value obtained during experiments. As reported for the

ballistic limit the numerical values obtained for the failure time are close to the experimental measurements for all the constitutive relations used, except the case of **PLII** for which the obtained values are out of 10% range in comparison to the experimental data, Fig.10. It must be noticed that for numerical simulations corresponding to $V_0 \geq 100\text{m/s}$, the numerical estimation of the fracture time can not be validated due to absence of experimental data. The evolution of failure time with the impact velocity for all the constitutive relations used, presents the classical parabolic profile of perforation. This is in agreement with the experimental and numerical data reported in [13, 17, 62, 64].

Concerning the target shape after impact in the case of lubricated conditions and for impact velocity $V_0 = 40\text{m/s}$ appearance of four symmetric petals is observed for all constitutive relations Fig.11. Although for **JCI** one can observe a secondary crack that has been arrested before reaching the rear side of the plate, Fig.11. Anyhow, the failure mode predicted for all cases is petalling with absence of plug ejection. The number and the disposition of the petals are in agreement with the experimental observations, Fig. 4-b. Albeit, some differences in the residual velocity can be observed, Fig. 11.

On the contrary to the failure mode for $V_0 = 40\text{m/s}$, in the case of $V_0 = 300\text{m/s}$ and lubricated conditions the number of simulated radial cracks changed substantially depending on the constitutive relation, Fig.12. Notice that the higher number of radial cracks corresponds to the case with the higher residual velocity, **JCI** Fig.12. The relevance of this agreement will be analyzed ahead in this paper. In addition, using **PLII** model the failure of the plate is produced in the zone corresponding to the contact: plate – Hopkinson tube. This kind of failure has not been observed during experiments, although it is true that for this impact velocity experimental data does not exist. Anyhow, the failure mode predicted is common to all constitutive relations. That is ejection of a plug as the final stage of the perforation process.

It is shown in Fig.13 for the case of dry conditions and $V_0 = 100\text{m/s}$ that for all constitutive relations the failure mode is in agreement with the experimental observations, Fig. 4-a-c. That is a plug ejection as the final stage of perforation and therefore reduction of petalling. Nevertheless, the number of radial cracks changes with the constitutive relation applied. Again, the number of radial cracks predicted numerically is larger when the residual velocity is higher, **JCI**, Fig.13.

Fig. 14 shows stress vs. strain curves predicted by each constitutive relation and the comparison with experimental data for mild steel ES. These curves reproduce the true stress versus true plastic strain relations defined by Eqs.3, 4 and 7 for $T = 300\text{K}$ and different strain rates $\dot{\epsilon} = 0.001 \text{ s}^{-1}$, $\dot{\epsilon} = 0.01 \text{ s}^{-1}$, $\dot{\epsilon} = 10 \text{ s}^{-1}$ and $\dot{\epsilon} = 130 \text{ s}^{-1}$. Also a comparison with experimental curves is reported. In the case of low strain rates **JCI**, **PLI** and **RK** fit correctly the experimental results Fig.14 a-b, however **JCII** and **PLII** are not able to define the behavior at low strain rate since they are fitted for strain rates larger than 10 s^{-1} , Fig.14 c-d. For this reason at high strain rates **JCII** and **PLII** produce better results with experiments. However, it is observed that **RK** constitutive relation is able to reproduce the material behavior in the whole spectrum of strain rates shown in Fig.14. These differences in the predicted material behavior modify considerably the response of plate during perforation. The different behavior predicted by each constitutive relation will affect the absorption of energy consumed in the process of perforation. It is therefore possible to introduce some modifications in the failure mode of the target, the main goal of analysis in the present work.

In order to demonstrate the importance of defining correctly the material behavior, and particularly the effect of underestimating the flow stress, an extreme case has been taken into account. This extreme case consists of subtracting the term corresponding to the strain rate sensitivity from the **JC** formulation. The main goal is to investigate the relevance of the strain rate on the perforation process and at the same time the effect of the decrease of the flow stress of the target material.

As result of this analysis - see **Appendix D** – it is observed how a decrease of the rate sensitivity of the flow stress induces a reduction of the plastic field during perforation. In that case the inertia effects becoming relevant and it favors the appearance of a greater number of radial cracks. This explains the previously reported relation between the number of radial cracks and residual velocity. As it is analyzed in the next part, this effect is equivalent to an increase in the impact velocity.

In view of the complexity of failure dynamics demonstrated by the perforation problem and of the strong dependence of simulations on the definition of the material behavior, it is necessary the use of a constitutive relation capable to predict the response of the material with a good precision within a wide range of load conditions. Therefore relying on the good results that **RK** constitutive relation has offered for the problem treated in the present work as well as for other problems that involve the appearance of plastic instabilities [9, 50], this constitutive relation was chosen to perform a more

complex analysis of the perforation depending on the impact velocity and on the conditions of friction. Simulations performed under those assumptions are reported in the following part of the paper.

6. Analysis of the perforation process

In addition to the numerical simulations dealing with the role of the constitutive relation in analyzing the target behavior in the perforation process, in the next part of the paper a detailed analysis is offered showing the effects of impact velocity and friction on the failure mode. In this part of the numerical study only **RK** constitutive relation was applied.

6.1 Effect of friction

In present case, different kinds of failure mode are found during impact of steel sheets depending mainly on the friction coefficient μ and the impact velocity. Thus, for dry contact ($\mu \approx 0.26$) the top of the projectile is stuck to the steel sheet inducing a circumferential failure by necking. The diameter of the circumferential failure is close to projectile diameter. It follows by initiation of small radial cracks, Fig.4a, c. The process of failure observed for lubricated case is slightly different. For the last case ($\mu \approx 0$), due to radial sliding of the steel sheet along the projectile nose a small plug ejection appears close to the dome of the sheet steel, **stage A**, Fig. 4-a-c and Fig. 15. In that case the process of hole enlargement is longer allowing to initiate more small cracks, **stage B**, responsible of petal formation as ultimate stage by crack propagation, **stage C**.

Both situations are faithfully reproduced during numerical simulations in agreement with the experimental observations, Fig. 4 using the **RK** constitutive relation, Fig. 16. For dry condition ($\mu = 0.26$) ejection of a plug is observed as the final stage of perforation process for the whole range of impact velocities considered.

Nevertheless, in the case of lubricated conditions ($\mu = 0$), the plug ejection appears only when the ballistic limit is considerably exceeded, that is for $V_0 \geq 100\text{m/s}$, Fig.16-d. This effect has been observed and studied previously in tension and perforation. This last is due to the trapping of plastic deformation corresponding to the Critical Impact

Velocity appearance for this material as reported in [68-69]. When that impact velocity is reached, the hole enlargement process becomes reduced and the target failure is induced by circumferential necking, it causes a plug ejection. Thus, for a high impact velocity, the differences concerning the failure mode between dry and lubricated condition become reduced.

Anyway, the friction effect is observed in the whole considered range of impact velocity by measuring the force time history. The force level is slightly larger in case of dry condition, $\mu = 0.26$, due to the friction effect. The difference in the maximum force level between the numerical values obtained for $\mu = 0.26$ and $\mu = 0$ seems to remain independent of the impact velocity, Fig. 17.

This fact is in agreement with the experimental observations and also with the hypothesis assumed to obtain the analytical prediction of the friction coefficient used for dry conditions, $\mu = 0.26$. Moreover, the constant value used for the friction coefficient based on the assumption of a constant pressure along the contact zone projectile-plate is supported by the results obtained from the numerical simulations as reported in Fig. 18.

It is observed using this measurement technique (force obtained by knowledge of projectile deceleration history) that inertia effect appears at the beginning of loading, Fig. 19. When the inertia effect is dissipated, a quasi-static loading curve is obtained, as for example when the force is measured along the Hopkinson tube, as reported in [37]. However, even if the force history is different, the energies absorbed in the target are very close. A complete analysis is reported in [37] concerning the effect of point measurement during experiment. In the present case, as the tube is defined as rigid, the force is obtained via time deceleration of the projectile.

Moreover, the friction level can also be observed for any impact velocity by measuring the plug size. This is possible since the tangential stress that appears by the friction amplifies the process of necking and therefore favours plug ejection. In the case of $\mu = 0.26$ the plug diameter is always larger than in the case of $\mu = 0$. The largest difference appears for impact velocities close to the ballistic limit. In that case for $\mu = 0$ and $V_0 \leq 70$ m/s there is no plug ejection, Fig. 20.

Another possibility to quantify the friction effect, which is directly related with the plug size, is the displacement of projectile at failure time. The results obtained from the numerical simulations reveal that this parameter is larger when $\mu = 0$. This statement is

true for the complete range of impact velocities considered, Fig. 20. The displacement of the projectile at failure quantifies the larger deformation of the target in the case of $\mu = 0$.

6.2 Influence of impact velocity

Influence of impact velocity, V_0 , on the failure mode considering both conditions of friction, $\mu = 0$ and $\mu = 0.26$, can be easily observed. In both friction conditions, the number of radial cracks increases with impact velocity. This phenomenon is induced by the increase of the circumferential strain level responsible of the crack initiation and progression, [21]. This is caused by the increase of the kinetic energy transferred to the material of the target when the impact velocity increases. Although the number of cracks is larger in case of high impact velocity, the failure mode induced by necking that appears in this situation reduces the size of the petals.

In addition, the initial impact velocity affects also the force level during perforation. The maximum force is reached at the maximum impact velocity considered, $V_0 = 300\text{m/s}$, and next it decreases with impact velocity, Fig. 21. This effect is caused by the strain rate sensitivity of the material target. At high impact velocity the mean strain rate increases and the target material is subjected to a strong process of strain hardening, which in turn increases the mean force. This process is limited at low impact velocity where the force level is reduced.

In order to analyze the phenomena involved in the process, an energy balance is proposed, defined by Eq. 19.

$$\Delta K_p = W_p + W_f + W_{tp} \quad (19)$$

Where ΔK_p is the kinetic energy lost by the projectile, W_p is the plastic work, W_f is the friction energy and W_{tp} is the kinetic energy transferred into the plate. Globally, it can be observed how at low impact velocity the process is governed by the plastic work, however, when the impact velocity increases the inertia effects become predominant due to larger amount of kinetic energy transferred into the plate, concentrated mainly in the kinetic energy of the plug, Fig. 22.

However some differences appear between lubricated and dry conditions. In the case of $\mu = 0$, and the impact velocity close to the ballistic limit, the plastic work represents

almost 100% of the energy absorbed by the plate. This quantity is reduced in the case of $\mu = 0.26$ by contribution to the work of friction. For initial impact velocity $V_0 \geq 150\text{m/s}$ the contribution of inertia effects is clearly higher in the case of $\mu = 0.26$. As previously discussed, the plug size is larger for dry conditions.

In addition, the increase of the inertia effect with impact velocity can be measured by the gap projectile – plate which appears when a certain impact velocity is exceeded, $V_0 \geq 150\text{m/s}$, Fig. 23. This generates a hole expansion process, [70].

It is observed after Fig.22 how a complete petalling (lubricated condition for $V_{bl} \leq V_0 \leq 100\text{m/s}$) is restricted in perforation processes completely governed by plastic work. In that case, an absence of plug ejection is found.

6.3 Analysis of petalling process

In order to study the petalling process, several studies based on analytical developments can be found in the international literature explaining the mechanics responsible for such behavior. Traditionally, the petalling process in the analytical models available in the literature is approximated as a simple hole enlargement, [71-74]. However, the theories proposed in [75] and [21] have approached the process by means of a more rigorous treatment.

In [21] it is reported that the appearance of four or five symmetric petals corresponds to a minimum for total rate of energy dissipation. The experiments performed in the present work for lubricated condition also satisfied the previous observations. At impact velocity close to the ballistic limit the number of petals appearing is four. In this situation the energy needed by the projectile to perforate the plate is minimum, Fig. 24.

This fact is well defined by the numerical simulations performed with application of **RK** constitutive relation, Fig.24. In such case the damage induced by the projectile in the sheet steel is concentrated in the dome of the target by avoiding necking and therefore by plug ejection, Fig. 25. This induces generation of several cracks in the zone, four of them quickly progress inducing the formation of four petals symmetrically disposed, Fig. 25. The fast progression of the cracks triggers an increase of the circumferential strain induced by the projectile advances.

The circumferential plastic strain in adiabatic conditions strongly increases the temperature at the bottom of the crack. This induces a local thermal softening, commonly responsible of instabilities appearance in dynamic problems, [9, 50, 76-82], which favours the fast progression of the cracks and diminishing the amount of energy absorbed by the plate during the perforation.

Three different stages of the perforation process have been analyzed in order to quantify the local gradient of temperature in the proximity of the cracks, Fig. 26. The first stage (**Stage I**) corresponds to the early development and progression of cracks, the second one (**Stage II**) represents the progression of cracks and the third one (**Stage III**) leads to the crack arrest. It is observed that the temperature quickly decreases as one moves away from the crack. The temperature distribution is represented by the parabolic profile, Fig. 26.

Thus, Fig. 26 shows a gradient of temperature in the zone close to the crack: $x \leq 1\text{mm}$ ($x = \text{distance from the crack}$), for **stage II** and **stage III**, being slightly minor in case of **stage I**. The reason of this difference is that for **stage I** the zone beside the crack is not fully plastic and an external contribution of energy represented by the force induced by the advance of the projectile is needed to propagate the crack. However in the case of **stage II** the strong temperature gradient coupled with the high level of circumferential strain caused by the advances of the projectile induces the progression of the crack with just a small amount of energy absorbed by the plate. In the case of **stage III**, although the gradient of temperature is comparable to **stage II**, the circumferential strain is not large enough to induce the crack progression and cracks are finally arrested close to the rear side of the target.

In the case of $x \geq 1\text{mm}$, the temperature decay is progressive until reaching $T \approx 293\text{K}$ which corresponds to a zone with absence of plastic deformation. The relevance of the gradient of temperature during the cracks progression demonstrates that the constitutive model used to define the behaviour of the plate in perforation problems, susceptible of inducing plastic instabilities such as petalling, is crucial.

7. Conclusions

The failure process of steel sheets when subjected to normal impact by hemispherical projectiles was examined. Experiments have been carried out using an

original set-up developed in LPMM of Metz University based on the R.M. Davies bar concept by application of Hopkinson tube. The tests were conducted covering a wide range of initial impact velocities. Lubricated and dry conditions were applied between specimen and steel sheet making possible the analysis concerning the influence of friction during perforation process. Numerical calculations have been made by application of 3D analysis using ABAQUS/Explicit FE code and considering three different constitutive relations, **JC**, **PL** and **RK**. The last constitutive equation allows for a complete approximation of the non-linear strain rate sensitivity. However, in the cases of **JC** and **PL** constitutive equations the strain rate sensitivity must be approximated in several parts. Therefore, **RK** relation is chosen to carry out the numerical analysis of the perforation process. Since it is well known that impact events are strongly coupled with strain hardening, strain rate sensitivity and adiabatic temperature increase, a precise approximation of material behaviour is crucial.

In addition, the friction effect on the failure mode has been analyzed. Close to the ballistic limit velocity, appreciable differences appear on the failure mode depending on the conditions of friction applied between the specimen and the projectile. Using dry conditions the failure process appears in the form of circumferential necking inducing plug ejection as final stage with reduced petalling. Whereas in the case of lubricated conditions the longer hole enlargement process is observed which induces a complete petal formation. At high impact velocities the differences between both conditions of friction are reduced and the plug ejection due to necking process is the common failure mode observed.

Influence of impact velocity on the failure mode considering both conditions of friction has been evaluated. In both cases the number of radial cracks increases with impact velocity. This phenomenon is induced by the increase of the circumferential strain level responsible of crack initiation and progression.

To evaluate the contribution of the particular energy components involved in the process, an energy balance was carried out. From this analysis a conclusion can be drawn that the inertia effect increases as the impact velocity does, mainly due to the kinetic energy increase with the plug velocity. On the contrary, plastic work mainly governs the process for impact velocities close to the ballistic limit. For lubricated condition, plastic work represents almost 100% of the energy absorbed by the plate. When these conditions of friction and impact velocity are satisfied (**ballistic limit velocity and lubricated condition**) a complete petalling process is observed. The

number and disposition of petals numerically reproduced is in agreement with experimental observations and analytical predictions.

Acknowledgements - 1



Prof. J.R. Klepaczko, December, 2006

Janusz Roman Klepaczko passed away on August 15, 2008 at the age of 73. Graduated from Warsaw University of Technology in 1959, began the research work in 1960 at IPPT – Institute of Fundamental Technological Research, Polish Academy of Sciences, Warsaw, Poland and continued it until 1984, becoming full professor in 1983. Since 1985 he was working in LPMM (Laboratory of Physics and Mechanics of Materials), Paul Verlaine University of Metz, France, where he was founder of the experimental laboratory. He was well known in the field of dynamic behaviour of materials; he was the author of over 200 publications and supervised 30 doctors in several research centres around the world. Janusz was involved in research until the end of his life. He was a great researcher and had a passion for Science. He was for us a source of motivation and inspiration. We pay our tribute to him for his teaching and contribution in Science.

Acknowledgements - 2

The researchers of the University Carlos III of Madrid are indebted to the Spanish Ministry of Education (project DPI2005-06769), and to the Region of Madrid (project CCG06-UC3M/DPI-0796) for the financial support that allowed to perform a part of the numerical simulations. The researchers from the Metz University (Laboratory of Physics and Mechanics of Materials) acknowledgement some support by CNRS-France.

- Appendix A – Parameters of the mild steel for different constitutive relations

| | Johnson-Cook, set I (<i>Low strain rates</i>) | Johnson-Cook, set II (<i>High strain rates</i>) |
|---------------------------------------|--|--|
| A [MPa] | 57.27 | 57.27 |
| B [MPa] | 479.93 | 79.641 |
| n [-] | 0.316 | 0.316 |
| C [-] | 0.0362 | 0.37848 |
| $\dot{\epsilon}_0$ [s ⁻¹] | 10 ⁻³ | 10 ⁻³ |
| m [-] | 0.28 | 0.28 |
| T ₀ [K] | 300 | 300 |

| Rusinek-Klepaczko (<i>Low and high strain rates</i>) | |
|---|----------------------|
| B ₀ [MPa] | 591.6 |
| n ₀ [-] | 0.285 |
| ϵ_0 [-] | 1.8*10 ⁻² |
| D ₁ [-] | 0.48 |
| ν [-] | 0.2 |
| σ_0^* [MPa] | 406.3 |
| m [-] | 2.8 |
| D ₂ [-] | 0.19 |
| E ₀ [GPa] | 212 |
| \mathcal{G}^* [-] | 0.59 |
| T _m [K] | 1600 |
| $\dot{\epsilon}_{\max}$ (s ⁻¹) | 10 ⁷ |
| $\dot{\epsilon}_{\min}$ (s ⁻¹) | 10 ⁻⁵ |
| C _p (Jkg ⁻¹ K ⁻¹) | 470 |
| β [-] | 0.9 |
| ρ (kgm ⁻³) | 7800 |
| α (K ⁻¹) | 10 ⁻⁵ |

| | Power law, set I (<i>Low strain rates</i>) | Power law, set II (<i>High strain rates</i>) |
|-----------|---|---|
| K [MPa] | 1598 | 1598 |
| n [-] | 0.149 | 0.149 |
| m [-] | 0.02 | 0.062 |
| ν [-] | 0.2 | 0.2 |

- Appendix B - Relevant results of the numerical simulations

JCI

| Impact velocity, V_0 (m/s) | Residual velocity, V_0 (m/s) | Work, W (J) | Plastic work, W_p (J) | Failure time, t_f (μ s) | Plug diameter, Φ_p (mm) | Friction coefficient μ [-/] |
|------------------------------|--------------------------------|-------------|-------------------------|--------------------------------|------------------------------|---------------------------------|
| 300 | 295,9 | 188,1 | 96,0 | 28 | 16,6 | 0.26 |
| | 296,3 | 169,8 | 115,7 | 28 | 9,0 | 0 |
| 200 | 196,4 | 109,8 | 68,9 | 35 | 15,6 | 0.26 |
| | 195,5 | 137,0 | 104,0 | 49 | 11,8 | 0 |
| 100 | 93,8 | 92,3 | 74,9 | 104 | 11,1 | 0.26 |
| | 94,3 | 85,1 | 82,0 | 118 | 9,9 | 0 |
| 75 | 67,2 | 84,9 | 72,8 | 135 | 10,2 | 0.26 |
| | 67,8 | 78,5 | 77,2 | 144 | 7,8 | 0 |
| 50 | - | - | - | - | - | 0.26 |
| | - | - | - | - | - | 0 |
| 40 | - | - | - | - | - | 0.26 |
| | - | - | - | - | - | 0 |

JCII

| Impact velocity, V_0 (m/s) | Residual velocity, V_0 (m/s) | Work, W (J) | Plastic work, W_p (J) | Failure time, t_f (μ s) | Plug diameter, Φ_p (mm) | Friction coefficient μ [-/] |
|------------------------------|--------------------------------|-------------|-------------------------|--------------------------------|------------------------------|---------------------------------|
| 300 | 295,9 | 188,1 | 107,6 | 28 | 16,5 | 0.26 |
| | 295,9 | 188,1 | 129,9 | 28 | 12,0 | 0 |
| 200 | 196,0 | 121,9 | 85,7 | 35 | 13,1 | 0.26 |
| | 195,8 | 128,0 | 109,7 | 50 | 13,0 | 0 |
| 150 | 145,2 | 109,1 | 91,0 | 72 | 10,8 | 0.26 |
| | 145,2 | 109,1 | 103,1 | 80 | 9,9 | 0 |
| 100 | 93,0 | 103,7 | 87,9 | 91 | 8,7 | 0.26 |
| | 93,6 | 94,5 | 92,6 | 105 | 6,9 | 0 |
| 75 | 65,3 | 104,2 | 88,1 | 128 | 7,8 | 0.26 |
| | 66,5 | 92,6 | 88,3 | 128 | 4,8 | 0 |
| 50 | 34,1 | 102,5 | 85,9 | 207 | 8,1 | 0.26 |
| | 37,7 | 82,7 | 82,0 | 184 | 0,0 | 0 |
| 40 | 17,5 | 99,6 | 83,5 | 272 | 8,8 | 0.26 |
| | 23,1 | 82,1 | 81,3 | 238 | 0,0 | 0 |

RK

| Impact velocity, V_0 (m/s) | Residual velocity, V_0 (m/s) | Work, W (J) | Plastic work, W_p (J) | Failure time, t_f (μ s) | Plug diameter, Φ_p (mm) | Friction coefficient μ [-/] |
|------------------------------|--------------------------------|-------------|-------------------------|--------------------------------|------------------------------|---------------------------------|
| 300 | 295,5 | 206,3 | 139,0 | 28 | 15,9 | 0.26 |
| | 295,2 | 220,0 | 169,6 | 32 | 13,5 | 0 |
| 200 | 194,2 | 175,7 | 140,6 | 50 | 12,9 | 0.26 |
| | 193,6 | 194,0 | 159,7 | 55 | 12,3 | 0 |
| 150 | 143,1 | 157,9 | 132,5 | 70 | 11,4 | 0.26 |
| | 143,3 | 151,3 | 144,0 | 84 | 10,2 | 0 |
| 100 | 90,0 | 146,3 | 125,0 | 108 | 9,8 | 0.26 |
| | 91,2 | 129,5 | 126,8 | 120 | 6,9 | 0 |
| 80 | 67,4 | 142,7 | 123,0 | 145 | 9,9 | 0.26 |
| | 69,3 | 123,0 | 120,5 | 150 | 5,7 | 0 |
| 75 | 61,5 | 141,9 | 121,2 | 165 | 10 | 0.26 |
| | 64,0 | 120,3 | 118,5 | 165 | 5,6 | 0 |
| 50 | 27,8 | 133,0 | 112,9 | 250 | 10,5 | 0.26 |
| | 32,1 | 113,1 | 111,7 | 250 | 0 | 0 |
| 40 | 0 | 123,2 | 107,9 | 360 | - | 0.26 |
| | 13,7 | 108,7 | 107,5 | 320 | 0 | 0 |

PLI

| Impact velocity, V_0 (m/s) | Residual velocity, V_0 (m/s) | Work, W (J) | Plastic work, W_p (J) | Failure time, t_f (μ s) | Plug diameter, Φ_p (mm) | Friction coefficient μ [-/] |
|------------------------------|--------------------------------|---------------|-------------------------|--------------------------------|------------------------------|---------------------------------|
| 300 | 295,8 | 192,7 | 104,7 | 28 | 17,1 | 0.26 |
| | 295,7 | 197,2 | 128,2 | 30 | 14,8 | 0 |
| 200 | 196,1 | 118,9 | 87,4 | 40 | 14,8 | 0.26 |
| | 194,9 | 155,0 | 116,9 | 54 | 14,5 | 0 |
| 100 | 92,7 | 108,3 | 90,7 | 110 | 10,5 | 0.26 |
| | 93,0 | 104,0 | 100,2 | 115 | 8,8 | 0 |
| 75 | 65,0 | 107,8 | 91,7 | 154 | 12,5 | 0.26 |
| | 66,0 | 97,7 | 95,3 | 168 | 10,4 | 0 |
| 50 | 38,6 | 77,8 | 85,0 | 220 | 10,5 | 0.26 |
| | 37,0 | 86,9 | 91,0 | 240 | - | 0 |
| 40 | 17,7 | 99,0 | 84,1 | 310 | 10,2 | 0.26 |
| | 20,5 | 90,8 | 89,4 | 320 | - | 0 |

PLII

| Impact velocity, V_0 (m/s) | Residual velocity, V_0 (m/s) | Work, W (J) | Plastic work, W_p (J) | Failure time, t_f (μ s) | Plug diameter, Φ_p (mm) | Friction coefficient μ [-/] |
|------------------------------|--------------------------------|---------------|-------------------------|--------------------------------|------------------------------|---------------------------------|
| 300 | 293,8 | 283,5 | 219,4 | 42 | 13,9 | 0.26 |
| | 293,3 | 306,0 | 219,5 | 42 | 12,0 | 0 |
| 200 | 194,4 | 170,0 | 155,2 | 50 | 13,0 | 0.26 |
| | 191,2 | 265,0 | 177,9 | 60 | - | 0 |
| 100 | 88,0 | 173,7 | 149,2 | 130 | 10,8 | 0.26 |
| | 89,6 | 151,8 | 148,4 | 124 | 7,5 | 0 |
| 75 | 59,0 | 165,1 | 140,3 | 165 | 11,4 | 0.26 |
| | 61,6 | 140,7 | 139,0 | 170 | 5,8 | 0 |
| 50 | 22,1 | 154,9 | 133,5 | 270 | - | 0.26 |
| | 28,0 | 62,8 | 130,6 | 255 | - | 0 |
| 40 | 0 | 123,2 | 114,0 | - | - | 0.26 |
| | 0 | 123,2 | 121,0 | - | - | 0 |

- Appendix C- Elements eroded during the simulations

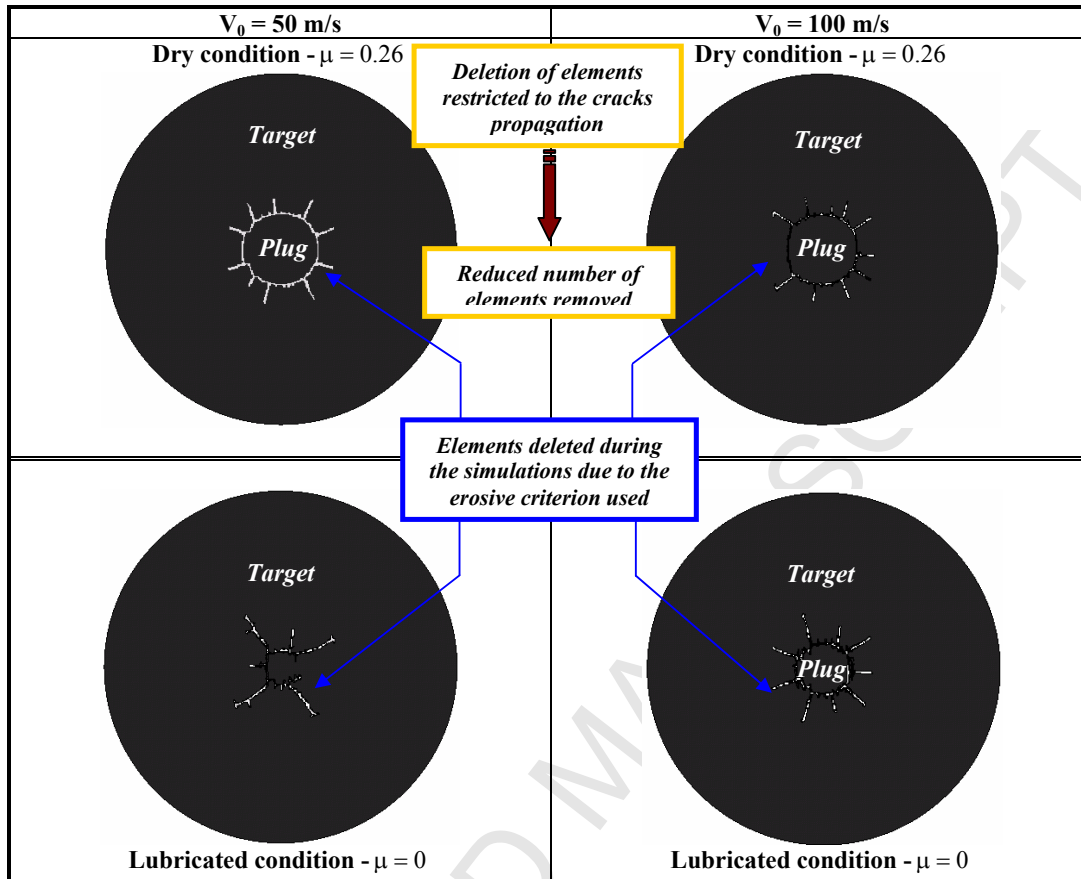


Fig C-1. Elements eroded during numerical simulations for both, lubricated and dry conditions for the case $V_0 = 50$ m/s and $V_0 = 100$ m/s

- Appendix D- Influence of strain rate sensitivity on the plastic flow

The explicit formulation of the JC constitutive relation without taking into account the term concerning the strain rate sensitivity is defined as follows:

$$\bar{\sigma}(\bar{\epsilon}^p, \dot{\bar{\epsilon}}^p, T) = [A + B(\bar{\epsilon}^p)^n] (1 - \Theta^m) \quad (C-1)$$

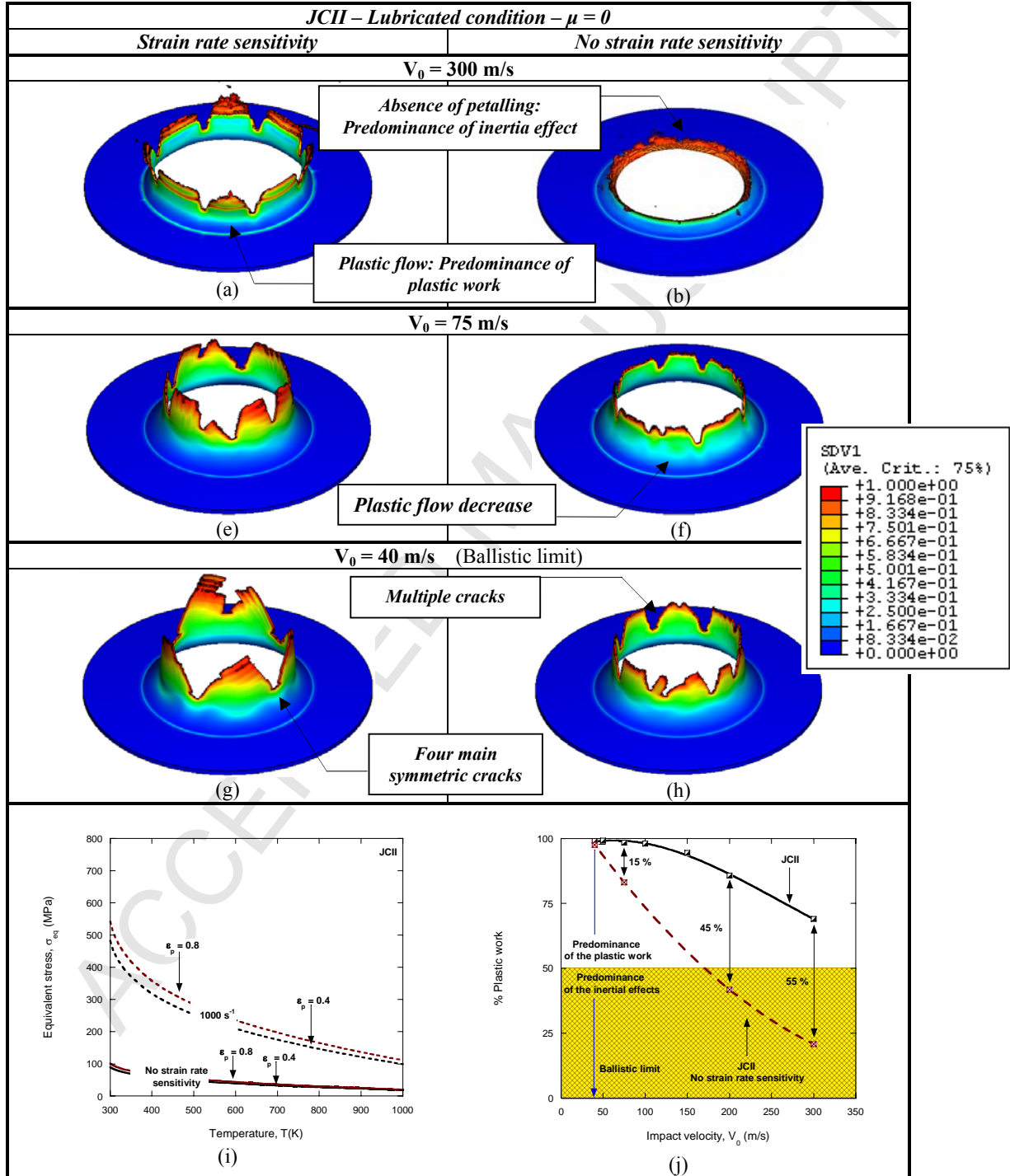


Fig. D-1. Equivalent plastic strain contours for JC constitutive relation with (a), (e), (g) and without (b), (f), (h) strain rate sensitivity at several impact velocities. (i) Equivalent stress vs. temperature and (j) % plastic work for JC constitutive relation with and without strain rate sensitivity

References

- [1] Campbell J. D. The yield of mild steel under impact loading. *J Mech Phys Solids*. 1954;3(1) 54-62
- [2] Abramowicz W., Jones N. Dynamic axial crushing of square tubes. *Int J Impact Eng*. 1984;2(2);179-208
- [3] Abramowicz W., Jones N. Dynamic axial crushing of circular tubes. *Int J Impact Eng*. 1984;2(3);263-281
- [4] Thornton P. H., Yeung K. S. The dynamic buckling of sheet steel. *Int J Impact Eng*. 1990;9(4): 379-388
- [5] Klepaczko, JR. An experimental technique for shear testing at high and very high strain rates. The case of mild steel. *Int J. Impact Eng*. 1994;12(1) 25-39.
- [6] Li Q. M., Jones N. Response and failure of a double-shear beam subjected to mass impact. *Int. J. Solids Struct*. 2002;39: 919-1947
- [7] Teng X, Wierzbicki T, Hiermaier S, Rohr I. Numerical prediction of fracture in the Taylor test. *Int J Solids Struct* 2005;42:2929-48.
- [8] Tarigopula V., Langseth M., Hopperstad O. S., Clausen A. H. Axial crushing of thin-walled high-strength steel sections. *Int. J. Impact Eng*. 2006; 32:847-882
- [9] Rusinek, A., Zaera, R. Finite element simulation of steel ring fragmentation under radial expansion. *Int J Impact Eng*. 2007; 34, 799-822.
- [10] Piekutowski A. J. Holes produced in thin aluminium sheets by the hypervelocity impact of aluminium spheres. *Int J Imp Eng*. 1999;23:71 1-722
- [11] Forrestal M. J, Piekutowski A. J. Penetration experiments with 6061-T6511 aluminum targets and spherical-nose steel projectiles at striking velocities between 0.5 and 3.0 km/s *Int J Impact Eng*. 2000;24:57-67
- [12] Borvik T, Langseth M, Hoperstad OS, Malo KA. Perforation of 12 mm thick steel plates by 20 mm diameter projectiles with flat, hemispherical and conical noses Part I: Experimental study. *Int J Impact Eng* 2002;27(1):19 – 35
- [13] Borvik T, Langseth M, Hoperstad OS, Malo K.A. Perforation of 12 mm thick steel plates by 20 mm diameter projectiles with flat, hemispherical and conical noses Part II: Numerical study. *Int J Impact Eng* 2002;27(1):37-64
- [14] Borvik T, Hoperstad OS, Langseth M, Malo K.A. Effect of target thickness in blunt projectile penetration of Weldox 460 E steel plates. *Int J Impact Eng* 2003;28:413-464
- [15] Gupta NK, Iqbal MA, Sekhon GS. Experimental and numerical studies on the behaviour of thin aluminium plates subjected to impact by blunt – and hemispherical – nosed projectiles. *Int J Impact Eng*. 2006;32(12):1921 – 1944.
- [16] Gupta NK, Iqbal MA, Sekhon GS. Effect of projectile nose shape, impact velocity and target thickness on deformation behaviour of aluminium plates. *Int J Solids Struct*. 2007;44(10):3411-3439
- [17] Arias A, Rodríguez-Martínez J.A. Rusinek A. Numerical simulations of impact behaviour of thin steel to cylindrical, conical and hemispherical non-deformable projectiles, *Eng Fract Mech*. 75 (2008) 1635-1656
- [18] Eddie Cheshire, Marco Rossi, Tony Atkins. Perforation of sheets by pyramidal weapons such as arrowheads. *Int J Impact Eng* (2007), doi:10.1016/j.ijimpeng.2007.06.001
- [19] Edwards M.R., Mathewson A. The ballistic properties of tool steel as a potential improvised armour plate. *Int. J. Impact Eng* 1997;19(4);297-309
- [20] Atkins A. G., M. Afzal Khan M. J. H. Liu J.H. Necking and radial cracking around perforations in thin sheets at normal incidence. *Int. J. Impact Eng*. 1998 21(7) 521-539
- [21] Wierzbicki T. Petalling of plates under explosive and impact loading. *Int. J. Imp Eng*. 1999;22:935-954
- [22] Shen W.Q., Rieve R. O, Baharun B. A study on the failure of circular plates struck by masses. Part I: experimental results. *Int J Impact Eng*. 2002; 27:399-412
- [23] Lee Y.W., Wierzbicki T. Fracture prediction of thin plates under localized impulsive loading. Part II: discing and petalling. *Int. J Impact Eng*. 2005;31:1277-1308
- [24] Piekutowski A. J. Debris clouds generated by hypervelocity impact of cylindrical projectiles with thin aluminium plates. *Int. J Impact Eng*. 1987; 5:(1-4) 509-518
- [25] Cowper, G.R., Symonds, P.S., 1952, Strain hardening and strain rate effects in the impact loading of cantilever beams, Brown Univ., Div. of Appl. Mech., Report no. 28.
- [26] Bodner, S.R., Partom, Y. Constitutive equations for elastic-viscoplastic strain-hardening materials. *ASME J Appl Mech*. 1975;42:385-389.

- [27] Steinberg D.J, Cochran S.G, Guinan M.W. Constitutive model for metals applicable at high strain rates. *J Appl Phys* 1980; 51 (3):1498-1504.
- [28] Nemat-Nasser, S. On finite deformation elastoplasticity. *Int. J. Solids Struct.* 1982;18, 857–872.
- [29] Johnson, G.R., Cook, W.H. A constitutive model and data for metals subjected to large strains, high strain rates and high temperatures. 1983. In: *Proceedings of 7th International Symposium on Ballistics*, pp. 541–547.
- [30] Zerilli, F.J., Armstrong, R.W., 1987. Dislocation-mechanics-based constitutive relations for material Dynamics calculations. *J Appl Phys.* 1987;61:1816–1825.
- [31] Khan, A. *Continuum Theory of Plasticity*. 1998. Wiley, New York (Chapter 8).
- [32] Rusinek, A., Klepaczko, J.R. Shear testing of sheet steel at wide range of strain rates and a constitutive relation with strain-rate and temperature dependence of the flow stress. *Int J Plasticity*. 2001; 17, 87–115.
- [33] Liang, R., Khan, A.S. A critical review of experimental results and constitutive models for BCC and FCC metals over a wide range of strain rates and temperatures. *Int. J. Plasticity*. 1999; 15, 963–980.
- [34] Rusinek A., Zaera R., Klepaczko J. R. Constitutive relations in 3-D for a wide range of strain rates and temperatures – Application to mild steels. *Int J Solids Struct.* 2007;44:5611–5634
- [35] Boumaaz H, Klepaczko JR., Punching by impact, case of mild steel, *DYMAT Journal*, 1995;2(1) 13-29, (in French)
- [36] Klepaczko JR. A practical stress-strain-strain rate-temperature constitutive relation of the power form. *Journal of Mechanical Working Technology* 1987;15: 143-165.
- [37] Rusinek A. Modélisation thermoviscoplastique d'une nuance de tôle d'acier aux grandes vitesses de déformation. Etude expérimentale et numérique du cisaillement, de la traction et de la perforation, Ph.D. Thesis, Université du Metz; 2000.
- [38] M. Segreti a, A. Rusinek b, J.R. Klepaczko b. Experimental study on puncture of PMMA at low and high velocities, effect on the failure mode. *Polymer Testing* 23 (2004) 703–718
- [39] Klepaczko JR. Displacement gauge with a photodiode. *Measurements, Automatics and Control* 1966; 12 :466-476, (in Polish).
- [40] Marsh K. J., Campbell J. D. The effect of strain rate on the post-yield flow of mild steel. *J Mech Physics Solids*. 1963;11(1), 49-52
- [41] Bonorchis D., Nurick G. N. The effect of welded boundaries on the response of rectangular hot-rolled mild steel plates subjected to localised blast loading. *Int J Impact Eng.* 2007;34:1729–1738
- [42] Borvik T, Langseth M, Hopperstad OS, Malo KA. Ballistic penetration of steel plates. *Int J Impact Eng* 1999;22:855-86.
- [43] Smerd R., Winkler S., Salisbury C., Worswick M., Lloyd D., M. Finn M. High strain rate tensile testing of automotive aluminium alloy sheet. *Int J Impact Eng.* 2005;32:541–560
- [44] Kobayashi T., Simons J.W., Brown C.S., Shockey D.A. Plastic flow behaviour of Inconel 718 under dynamic shear loads. *Int J Impact Eng* (2007), doi:10.1016/j.ijimpeng.2007.03.005
- [45] Johnson G.R., Holmquist T.J., Anderson Jr. C.E., Nicholls A.E., Strain-rate effects for high-strain rate computation, *J. Phys IV France*, 134 (2006) 391-396.
- [46] Klepaczko JR. Thermally activated flow and strain rate history effects for some polycrystalline FCC metals. *Mater Sci Eng.* 1975;18,121–135.
- [47] Klepaczko JR. A general approach to rate sensitivity and constitutive modeling of FCC and BCC metals, in: *Impact: Effects of Fast Transient Loadings*, A.A. Balkema, Rotterdam, 1998: 3-35.
- [48] Quinney H, Taylor GI. The emission of latent energy due to previous cold working when a metal is heated. *Proc R Soc Lond* 1937;163:157 – 81
- [49] Oussuaddi O, Klepaczko JR. An analysis of transition from isothermal to adiabatic deformation in the case of a tube under torsion, in *Proc. Conf. DYMAT 91, Journal de Physique IV, Coll. C3, Suppl. III, 1 1991, C3-323*, (in French).
- [50] Rusinek, A., Zaera, R., Klepaczko, J.R., Cheriguenne, R. Analysis of inertia and scale effects on dynamic neck formation during tension of sheet steel. *Acta Mater.* 2005;53: 5387–5400.
- [51] Zaera, R., Fernández-Sáez, J. An implicit consistent algorithm for the integration of thermoviscoplastic constitutive equations in adiabatic conditions and finite deformations, *Int. J. Solids Struct.* 2006;43:1594-1612
- [52] Wood WW. Experimental mechanics at velocity extremes – very high strain rates. *Exp Mech.* 1965;5:361–371.
- [53] Teng X, Wierzbicki T. Evaluation of six fracture models in high velocity perforation. *Engineering Fracture Mechanics* 2006; 73(12):1653-1678.

- [54] Considère, M. L'emploi du fer de l'acier dans les constructions, Mémoire no. 34, Annales des Ponts et Chaussées. 1885;Paris:574–575.
- [55] Triantafyllidis N, Waldenmyer JR. Onset of necking in electro-magnetically formed rings. *J Mech.Phys Solids* 2004;52:2127–48.
- [56] Pandolfi A, Krysl P, Ortiz M. Finite element simulation of ring expansion and fragmentation. *Int J Fract* 1999;95:279–97.
- [57] Singh M, Suneja HR, Bola MS, Prakash S. Dynamic tensile deformation and fracture of metal cylinders at high strain rates. *Int J Impact Eng* 2002;27:939–54.
- [58] Law M. Use the cylindrical instability stress for blunt metal loss defects in linepipe. *Int. J. of Pressure Vessels and Piping* 2005; 82, 12, 925-928.
- [59] Rincón E, López HF, Cisneros MM. Effect of temperature on tensile properties of an as-cast aluminum alloy A319. *Mat Science and Engineering A* 2007; 15, 682-687.
- [60] Colombo D., Giglio M. Numerical analysis of thin-walled shaft perforation by projectile. *Comput Struct.* 85 (2007) 1264–1280
- [61] Børvik T. Clausen A.H., Eriksson M., Berstad T., Hopperstad O.S., Langseth M. Experimental and numerical study on the perforation of AA6005-T6 panels. *Int J Impact Eng.* 2005;32:35–64
- [62] Rusinek A., Arias A., Rodríguez-Martínez J.A., Klepaczko J. R., López-Puente J. Influence of conical projectile diameter on perpendicular impact of thin steel plate. *Eng. Fract. Mech.* 75 (2008) 2946–2967
- [63] Philippon S, Sutter G, Garcin F. Dynamic analysis of the interaction between an abradable material and a titanium alloy. *Wear* 2006; 261(5): 686-692.
- [64] Voyiadjis G. Z., Abu Al-Rub R. K.A Finite Strain Plastic-damage Model for High Velocity Impacts using Combined Viscosity and Gradient Localization Limiters: Part II - Numerical Aspects and Simulations *Int. J. Damage Mech.* 2006; 15; 335-373
- [65] Gupta NK, Iqbal MA, Sekhon GS. Effect of projectile nose shape, impact velocity and target thickness on the deformation behaviour of layered plates. *Int J Impact Eng* 2007. doi:10.1016/j.ijimpeng.2006.11.004
- [66] Teng X, Wierzbicki, Couque H. On the transition from adiabatic shear banding to fracture. *Mech. Materials.* 2007;39:107–125
- [67] Hibbitt HD, Karlsson BI, Sorensen P. *Abaqus User's manual, ABAQUS/EXPLICIT 6.5, 2005.*
- [68] Rusinek A, Klepaczko JR, A numerical study on the wave propagation in tensile and perforation test, *Journal of Physique IV*, 10 (2000), pp. 653-658
- [69] Rusinek A., Klepaczko J. R. A viscoplastic modeling of sheet metal in the range of large deformation and at low and high strain rates: Application to perforation *Zeitschrift fur angewandte mathematik und mechanik.*2000 (80) 3:S601-S602.
- [70] Lee, M. Cavitation and Mushrooming in Attack of Thick Targets by Deforming Rods. *J. Applied Mech.* 2001;68:420-424
- [71] Taylor G.I. The formation of enlargement of circular holes in thin plastic plates. *Q J Mechanics Appl Math.*1948;1:103-124
- [72] Zaid M, Paul B. Mechanics of high speed projectile perforation. *J Franklin Inst* 1958;265:317-35.
- [73] Paul B, Zaid M. Normal perforation of a thin plate by truncated projectiles. *J Franklin Inst* 1957;264:117-26.
- [74] Johnson W, Chitkara NR, Ibrahim AH, Dasgupta AK. Hole angling and punching of circular plates with conically headed cylindrical punches. *J Strain Anal* 1973;8(3):228-41.
- [75] Landkof B, Goldsmith W. Petalling of thin, metallic plates during penetration by cylindro-conical projectiles. *Int J Solids Struct* 1993;21:245-66.
- [76] Batra R. C., Wei Z. C. Instability strain and shear band spacing in simple tensile/ compressive deformations of thermoviscoplastic materials. *Int J Impact Engng* 34 (2007) 448–463
- [77] Batra R. C., Chen L. Effect of viscoplastic relations on the instability strain, shear band initiation strain, the strain corresponding to the minimum shear band spacing, and the band width in a thermoviscoplastic material. *Int. J. Plasticity.* 17 (2001) 1465–1489
- [78] Alos S., Hopperstad O. S., Tomquist R., Amdahl J. Analytical and numerical analysis of sheet metal instability using a stress based criterion. *Int J Solids Struct* 45 (2008) 2042–2055
- [79] Kuroda M., Uenishi A., Yoshida H., Igarashi A. Ductility of interstitial-free steel under high strain rate tension: Experiments and macroscopic modelling with a physically-based consideration. *Int. J Solids Struct* 43 (2006) 4465–4483
- [80] Rusinek A., Klepaczko J. R. A viscoplastic modeling of sheet metal in the range of large deformation and at low and high strain rates: Application to perforation, *Zeitschrift fur angewandte mathematik und mechanik* 2000;80:601-602

- [81] Rusinek A , Rodríguez-Martínez J. A., Klepaczko J. R., Pęcherski R. B. Analysis of thermo-visco-plastic behaviour of six high strength steels, J Mater Design (2008d), doi:10.1016/j.matdes.2008.07.034
- [82] Rusinek A, Klepaczko JR, A numerical study on the wave propagation in tensile and perforation test, Journal of Physique IV 2000;10:653-658

ACCEPTED MANUSCRIPT

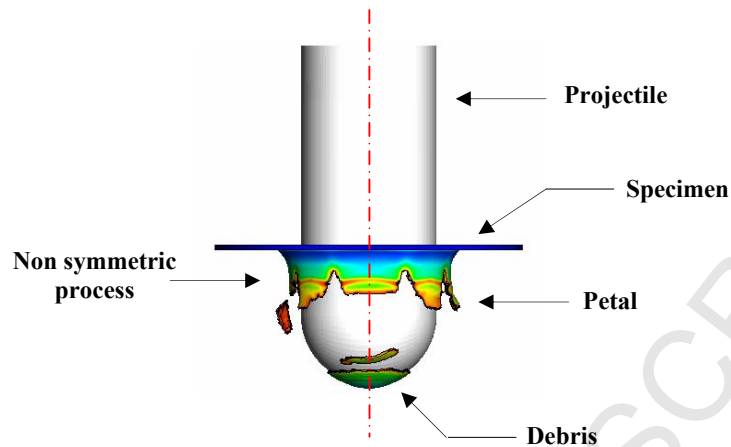
Figure captions**Figure 1**

Fig. 1. Perforation process by 3D numerical approach, visualization of petalling phenomenon.

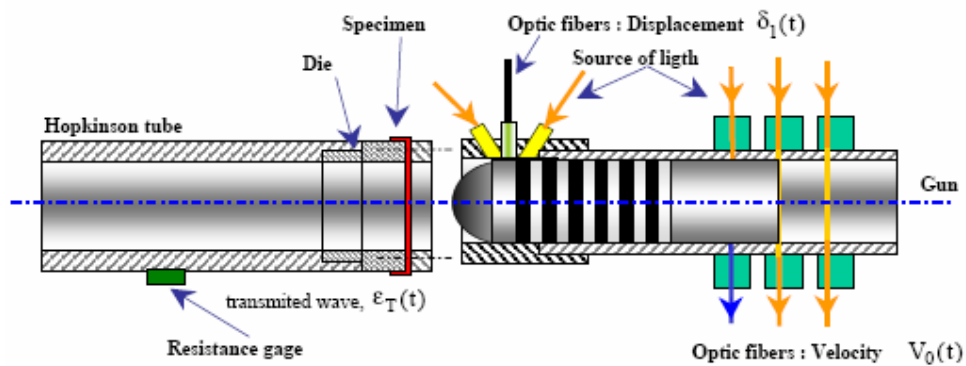
Figure 2

Fig. 2. Scheme of the experimental setup

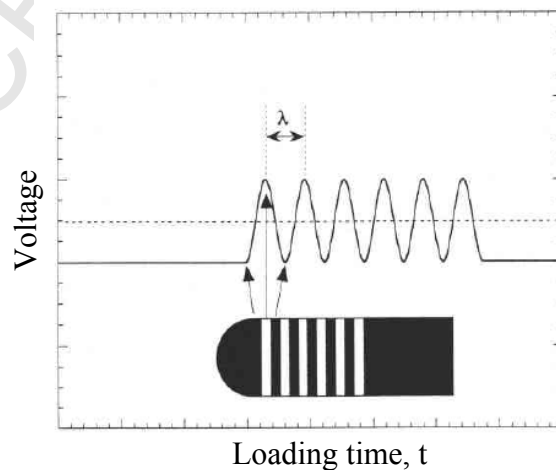
Figure 3

Fig. 3. Scheme of the frequency coding of projectile displacement.

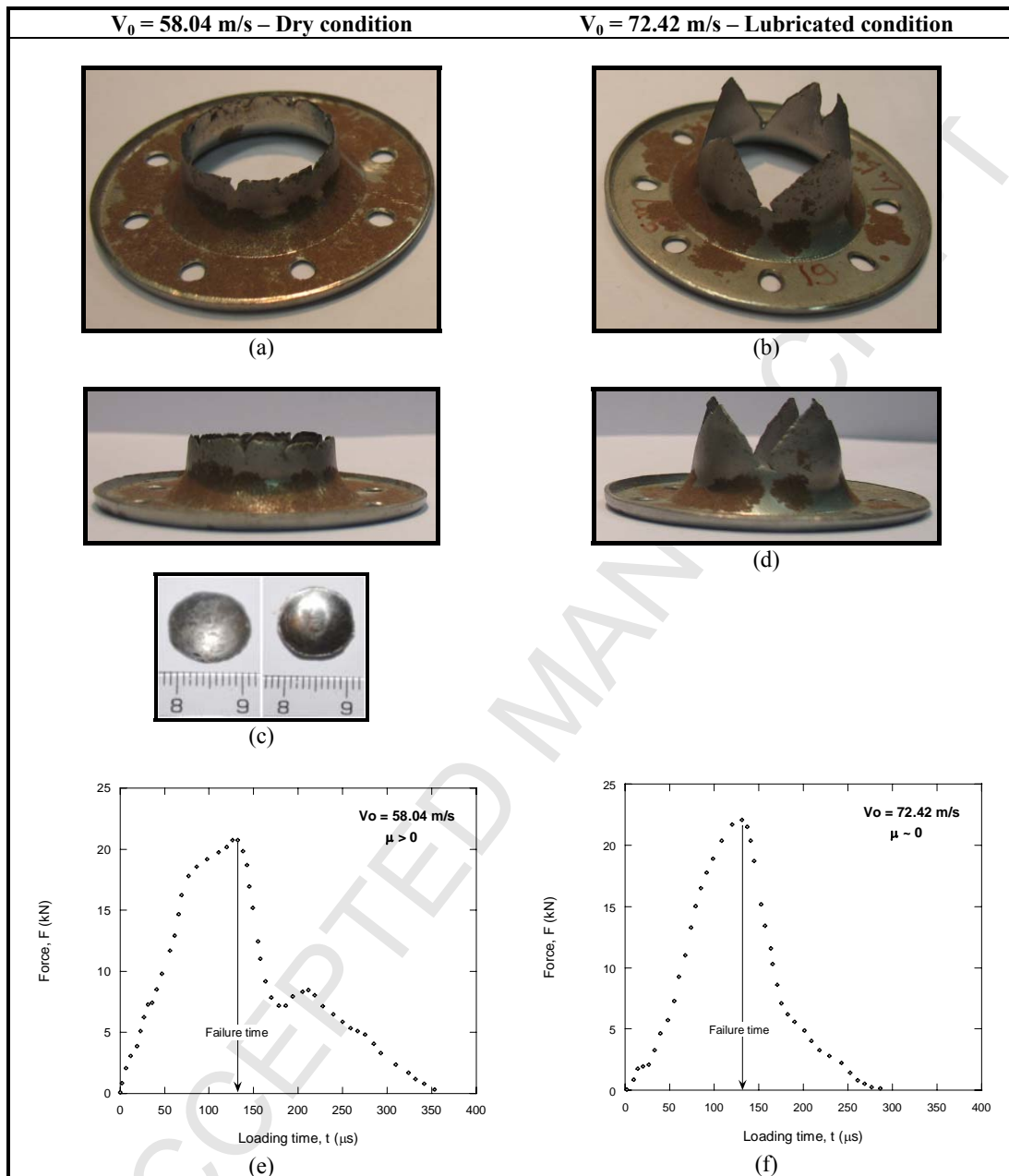
Figure 4

Fig. 4. Failure mode for ; (a) - (c) Dry condition with plug ejection definition; (b) - (d) Lubricated condition and corresponding ; force time history (e) Dry condition (f) Lubricated condition.

Figure 5

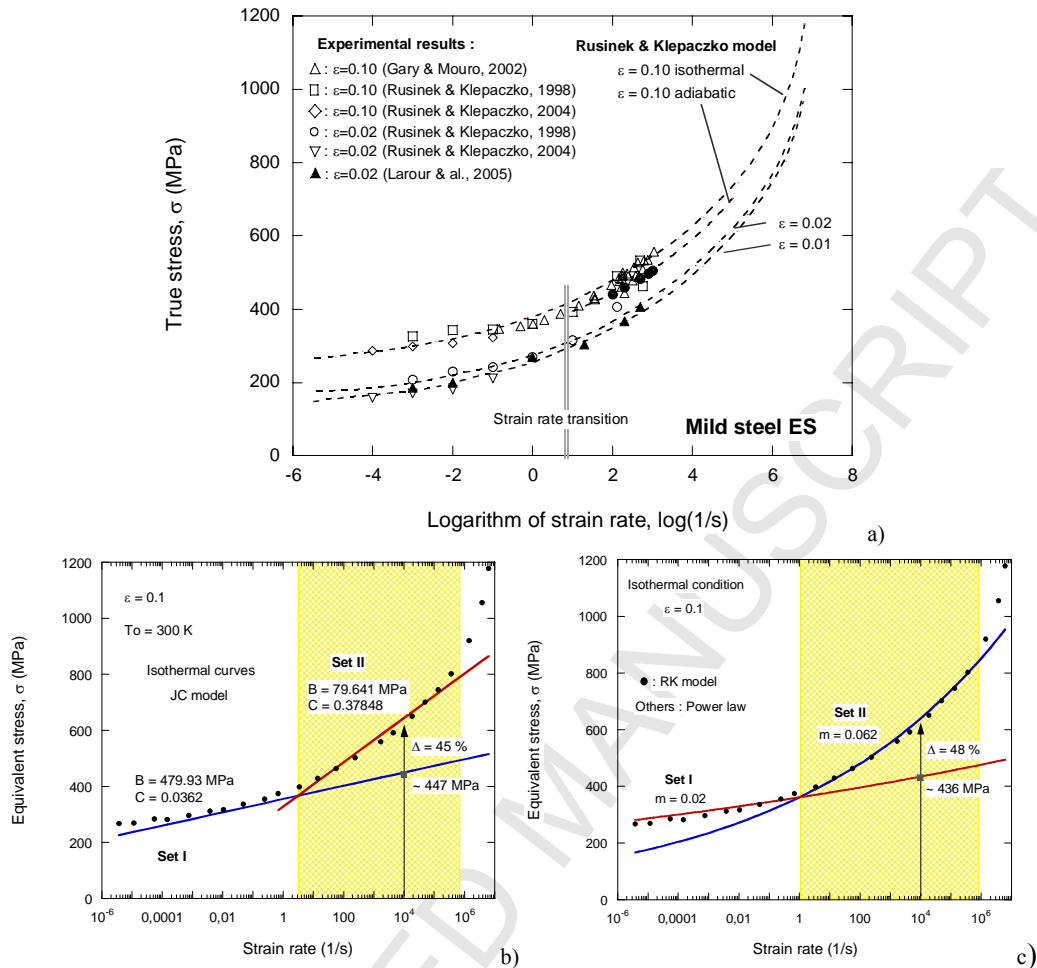


Fig. 5. Strain rate sensitivity of mild steel; (a) Comparison between experimental results and RK equation [36]; (b) Comparison between RK and JC equations; (c) Comparison between RK and PL equations.

Figure 6

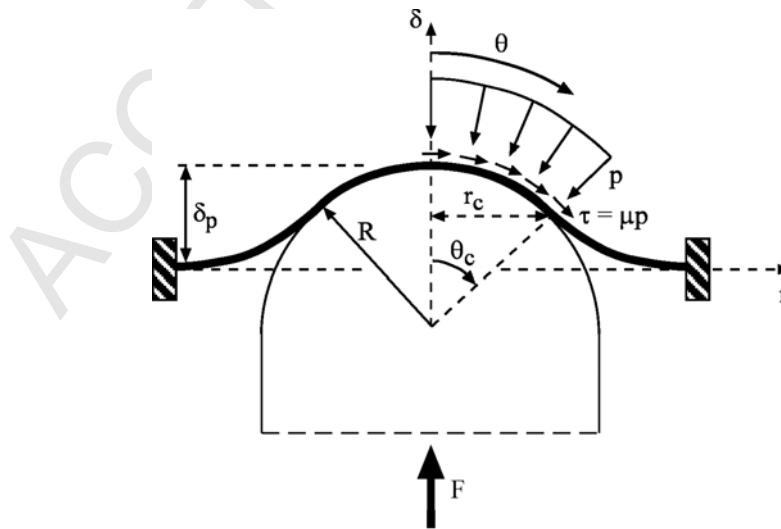


Fig. 6. Equilibrium of the punch tip and definition of the contact angle and radius.

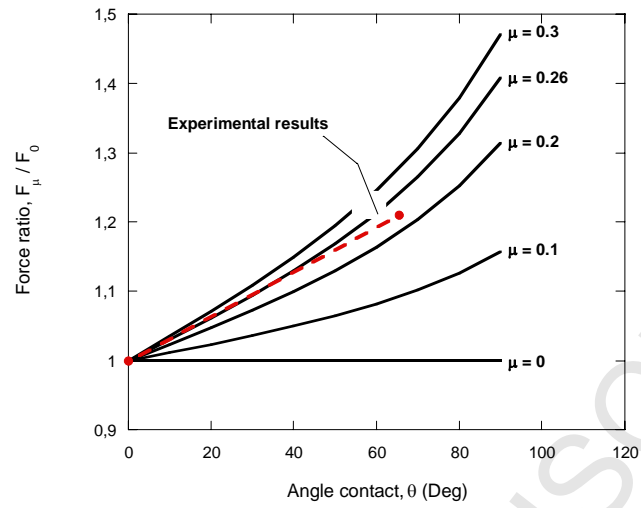
Figure 7

Fig.7. Calculated values of the force ratio for different coefficient of friction, mild steel ES

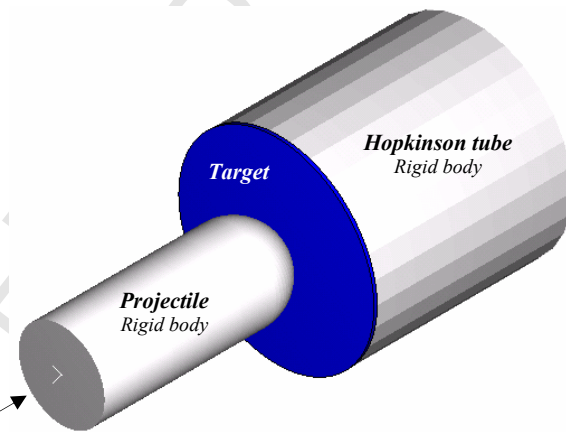
Figure 8

Fig.8. Configuration applied in the present work

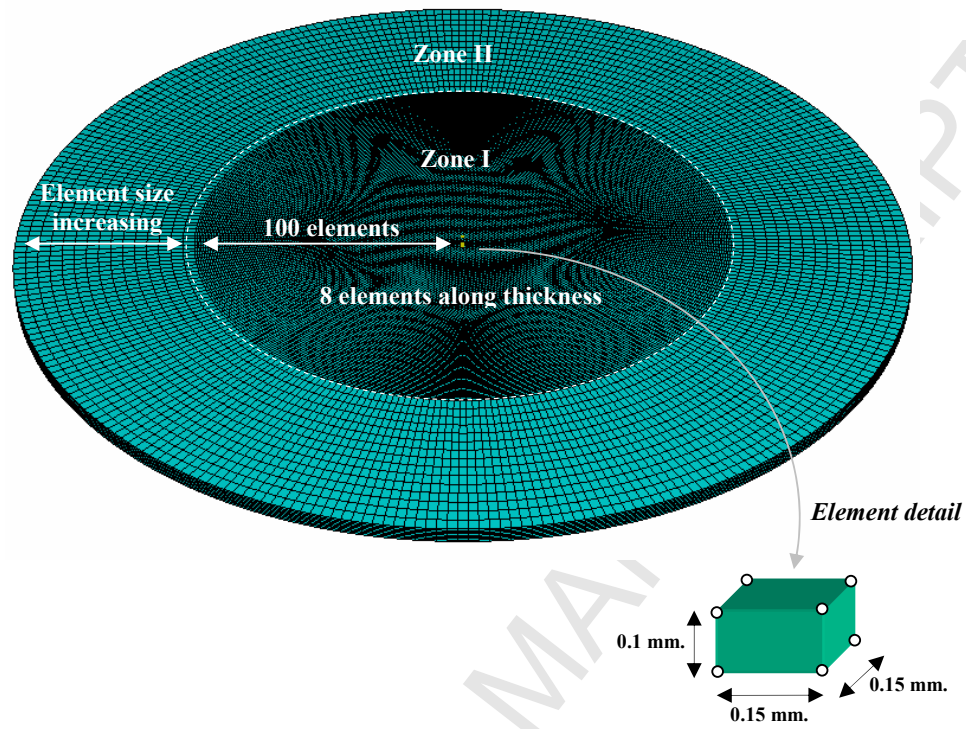
Figure 9

Fig.9. Mesh configuration used during numerical simulation of perforation

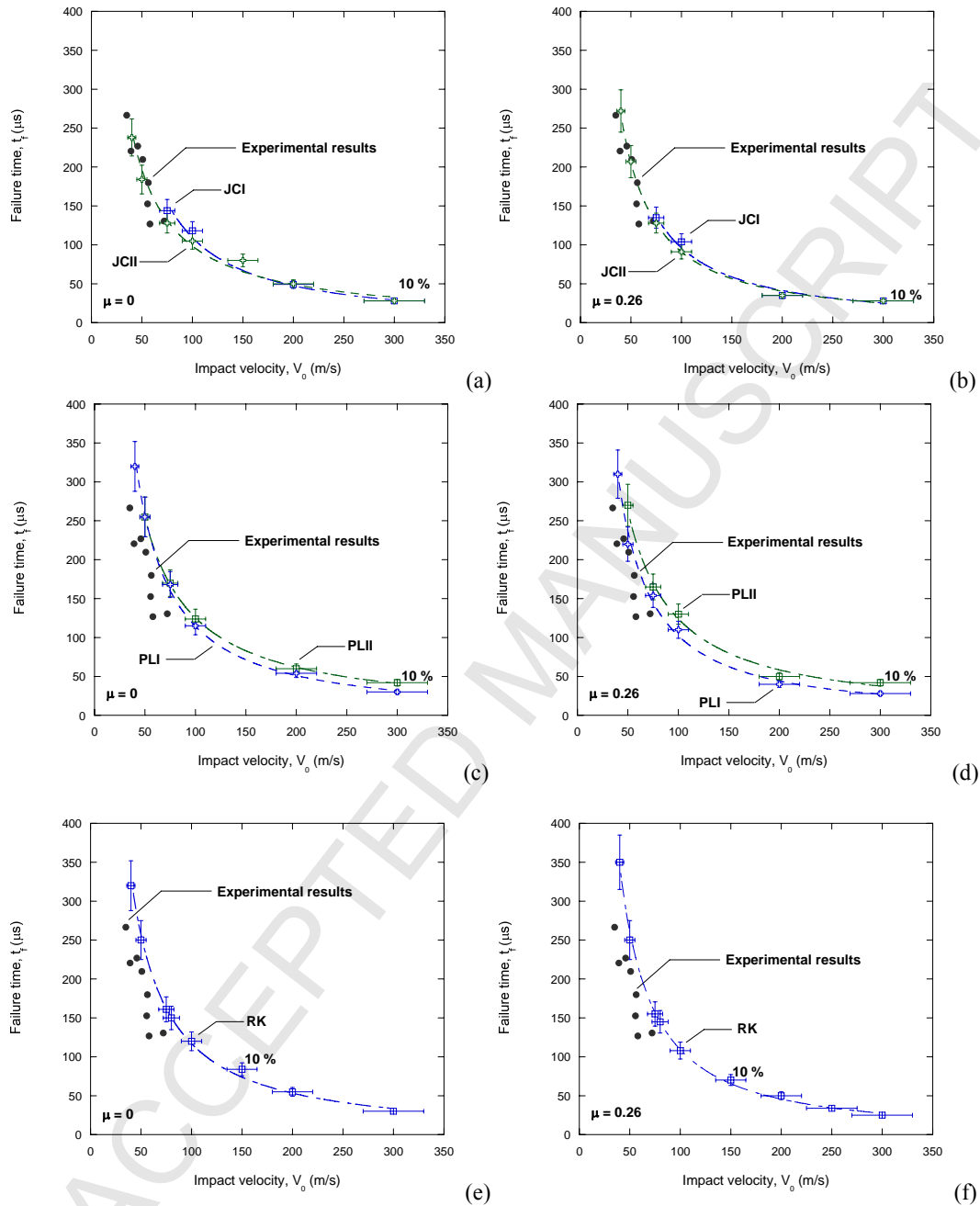
Figure 10

Fig.10. Numerical estimation of the failure time and comparison with experimental results; JCI and JCII, (a) - lubricated conditions, (b)- dry conditions; PLI and PLII, (c)- lubricated conditions, (d)- dry conditions. RK (e)- lubricated condition, (f)- dry conditions.

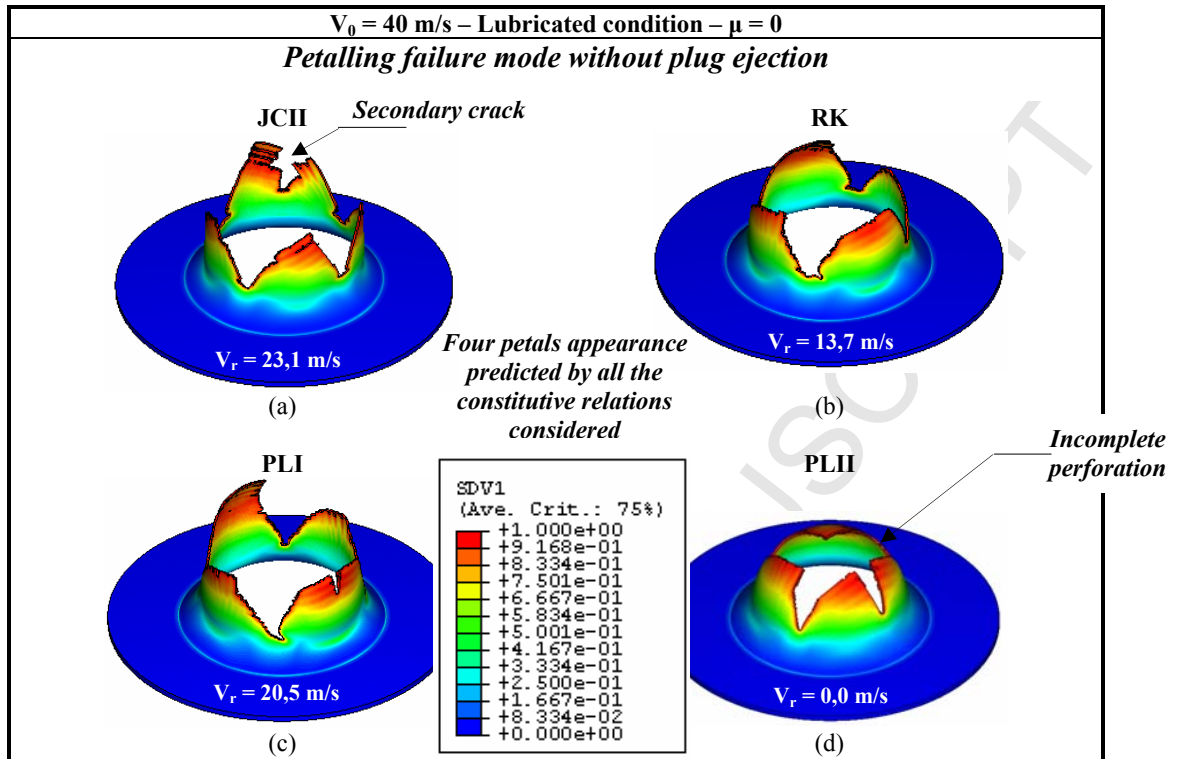
Figure 11

Fig.11 Equivalent plastic strain contours. Failure mode after impact for different constitutive relations : lubricated condition at $V_0 = 40 \text{ m/s}$, (a) JCII, (b) RK, (c) PLI, (d) PLII

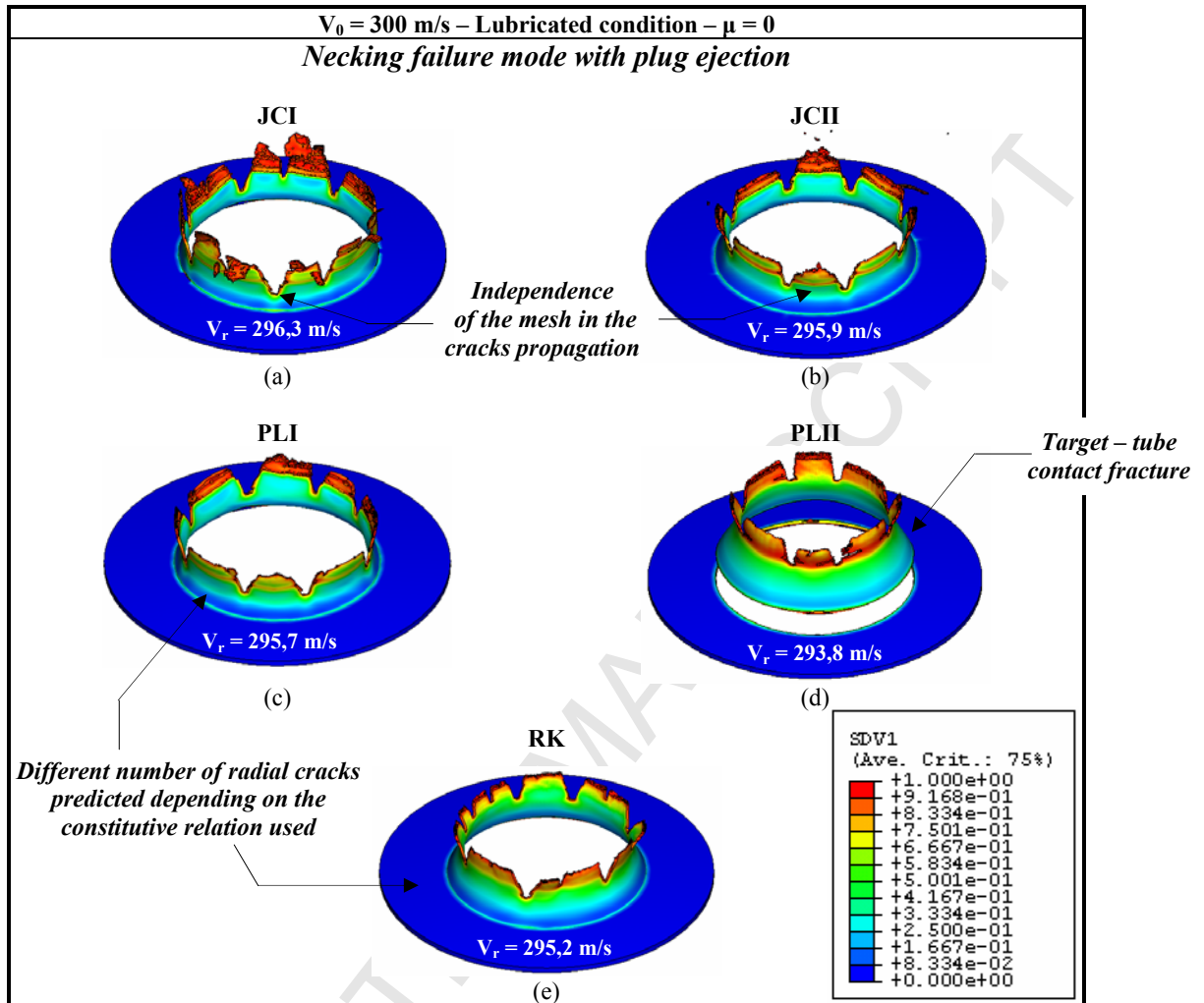
Figure 12

Fig.12 Equivalent plastic strain contours. Failure mode after impact for different constitutive relations: lubricated condition at $V_0 = 300 \text{ m/s}$, (a) JCI, (b) JCH, (c) PLI, (d) PLII, (e) RK

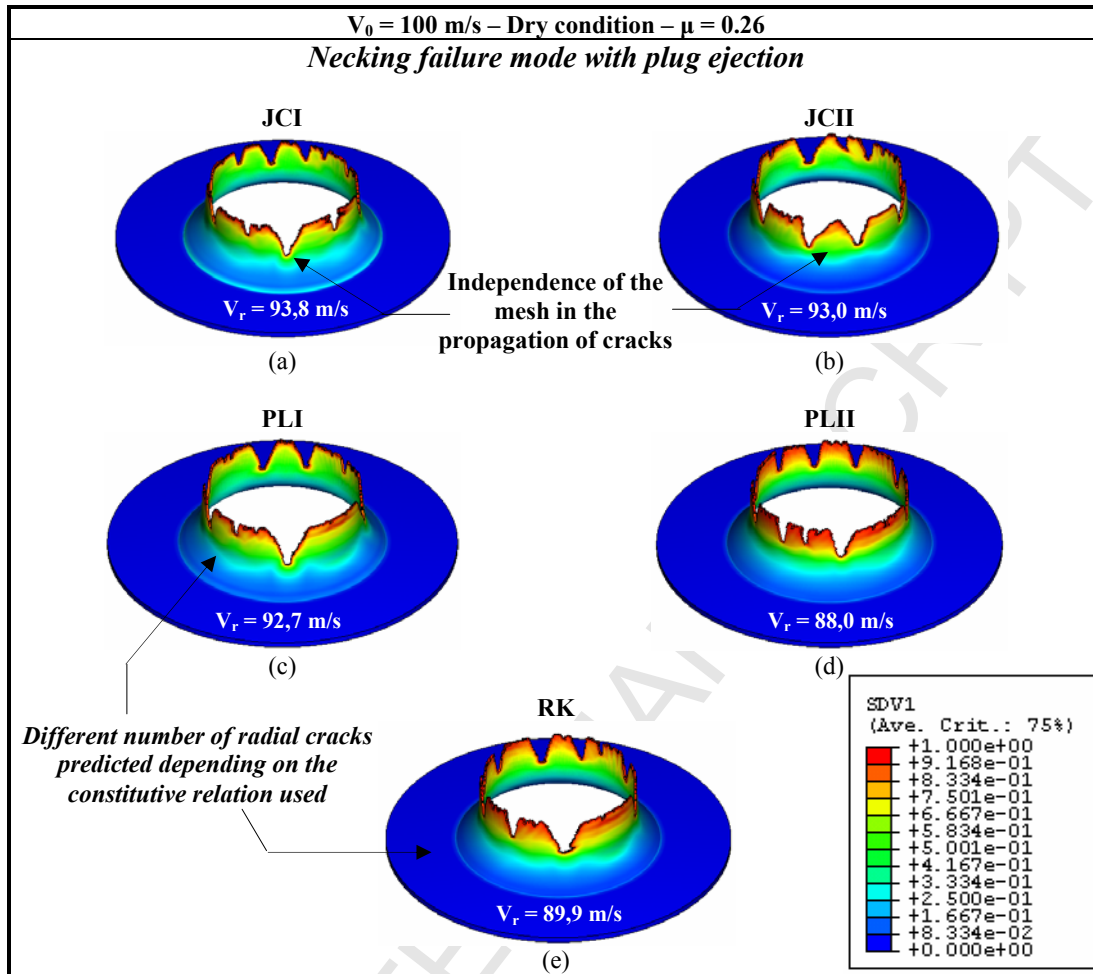
Figure 13

Fig.13 Equivalent plastic strain contours. Failure mode after impact for different constitutive relations: dry condition at $V_0 = 100 \text{ m/s}$, (a) JCI, (b) JCII, (c) PLI, (d) PLII, (e) RK

Figure 14

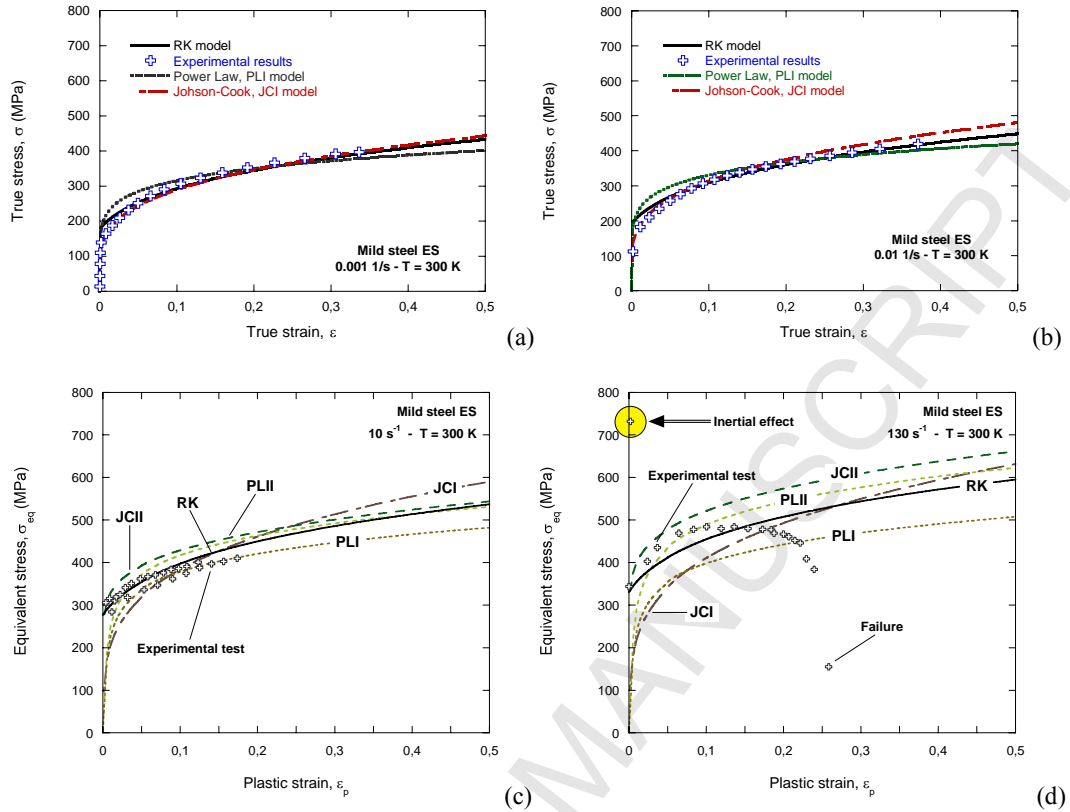


Fig. 14. Comparison of the predictions by different constitutive relations at $T = 300 \text{ K}$ and at different initial strain rates, (a) $\dot{\epsilon} = 0.001 \text{ s}^{-1}$, (b) $\dot{\epsilon} = 0.01 \text{ s}^{-1}$ (c) $\dot{\epsilon} = 10 \text{ s}^{-1}$, (d) $\dot{\epsilon} = 130 \text{ s}^{-1}$

Figure 15

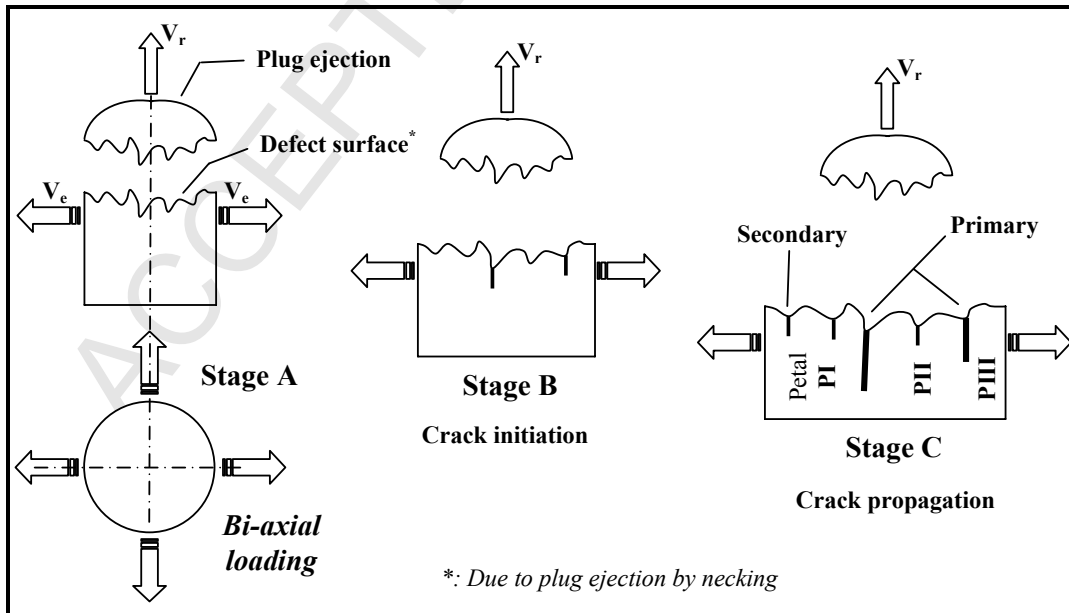


Fig. 15. Schematic representation of petal formation during perforation of sheet steel using lubricated conditions, V_e corresponding to expansion velocity along radial direction and V_r is the residual velocity.

Figure 16

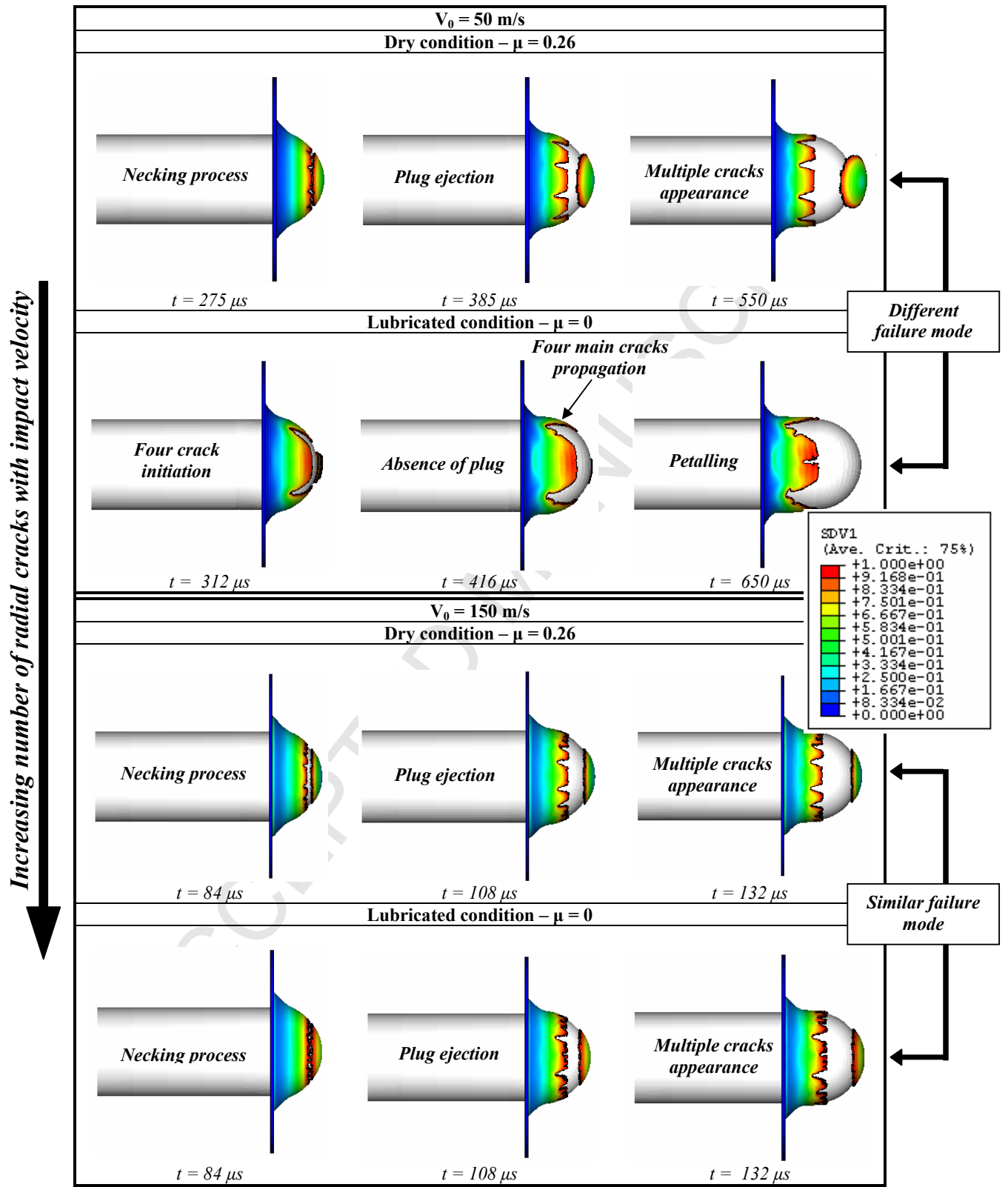


Fig. 16. Equivalent plastic strain contour plots of the perforation process using RK model: $V_0 = 50 \text{ m/s}$ (a) Dry condition - $\mu = 0.26$, (b) Lubricated condition - $\mu = 0$. $V_0 = 150 \text{ m/s}$ (c) Dry condition - $\mu = 0.26$, (d) Lubricated condition - $\mu = 0$

Figure 17

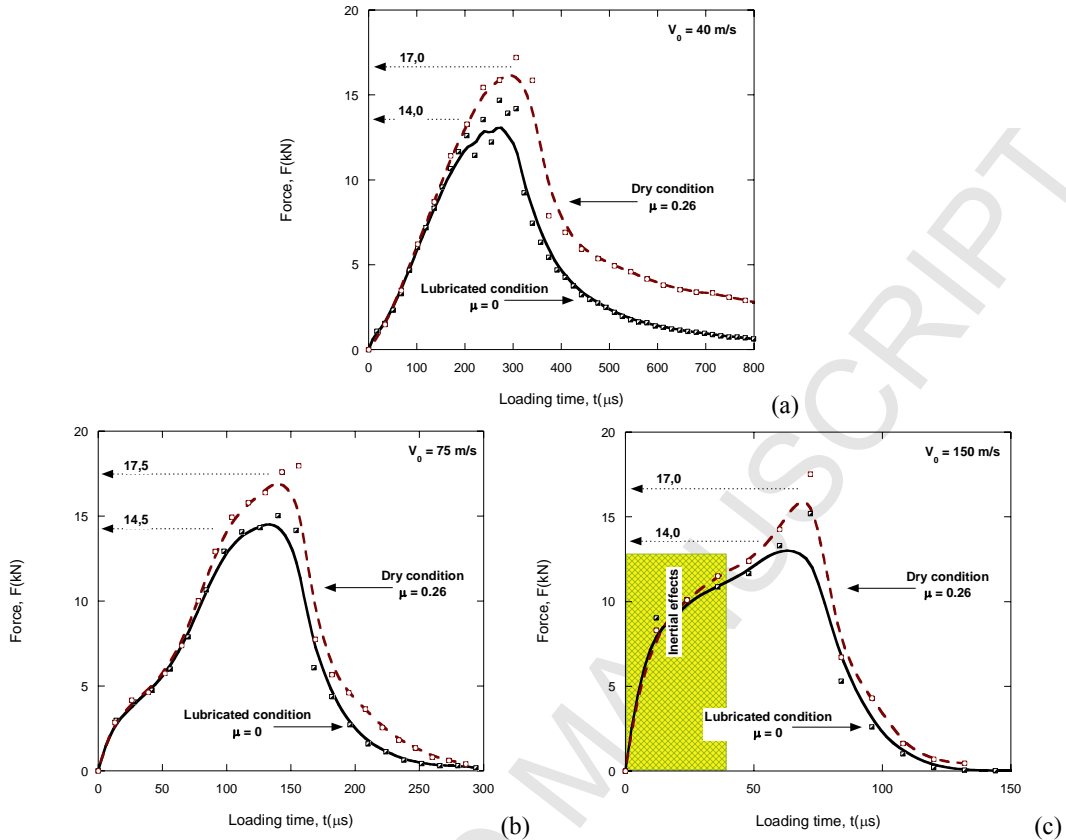


Fig.17 Force-time history comparison between lubricated and dry conditions for several initial impact velocities using RK model, (a) $V_0 = 40$ m/s (b) $V_0 = 75$ m/s, (c) $V_0 = 150$ m/s

Figure 18

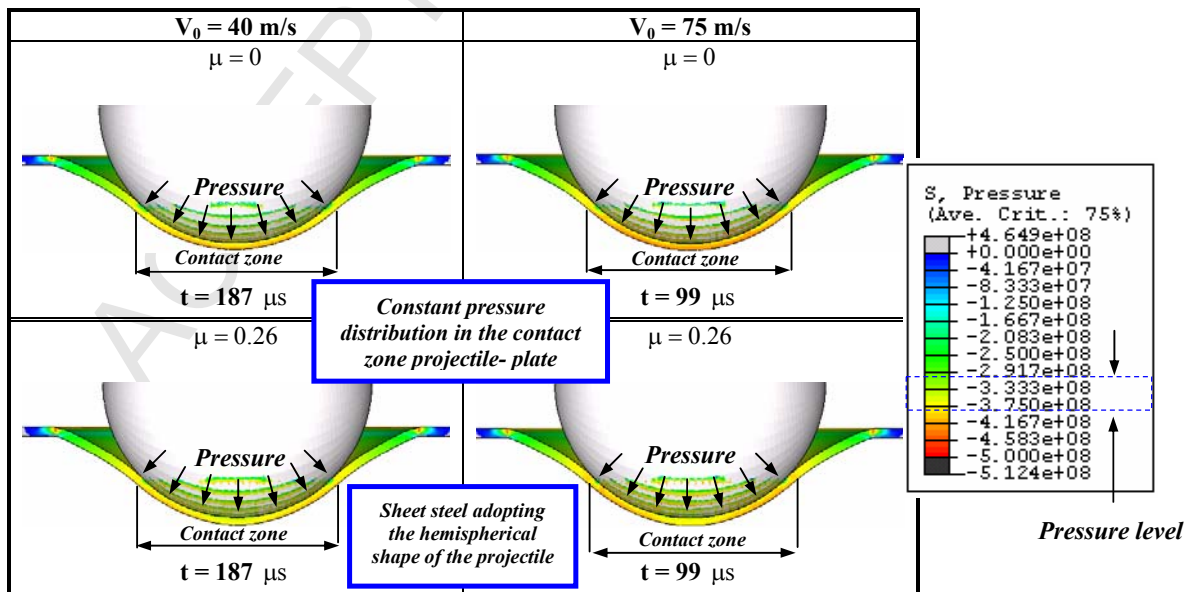


Fig. 18 Pressure distribution during perforation process, [Pa]

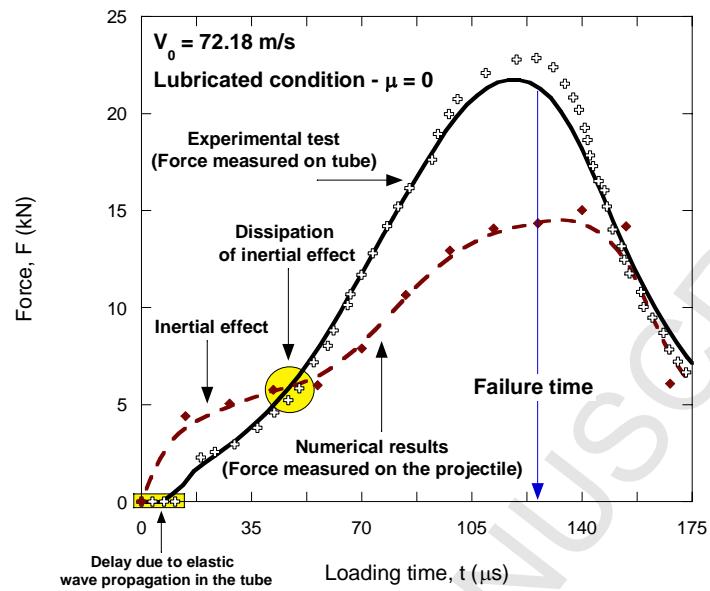
Figure 19

Fig. 19. Comparison of force - time history between experimental measurement via the Hopkinson tube, [37], and numerical estimation via the history of projectile deceleration obtained with RK relation.

Figure 20

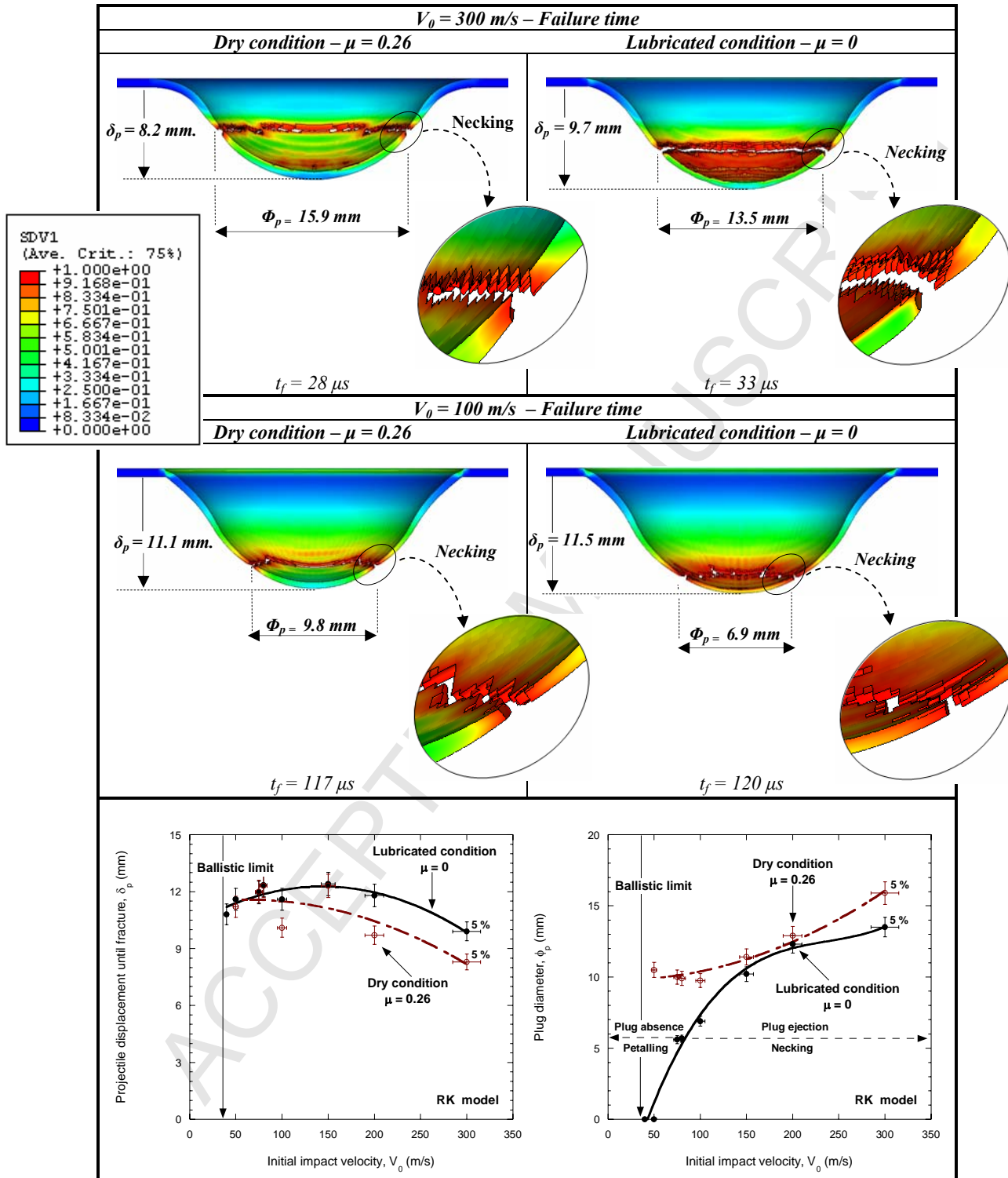


Fig.20 Equivalent plastic strain contours at instant of failure for dry and lubricated conditions - (a), (b) - $V_0 = 300 \text{ m/s}$; (c), (d) $V_0 = 100 \text{ m/s}$; (e) - Numerical estimation of projectile displacement until fracture and (f) - plug diameter using RK constitutive relation for lubricated and dry conditions.

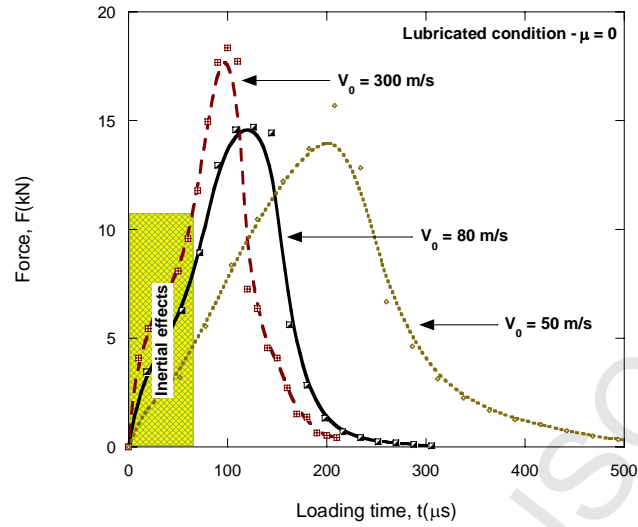
Figure 21

Fig. 21. Force - time history for lubricated conditions and several initial impact velocities using RK constitutive relation

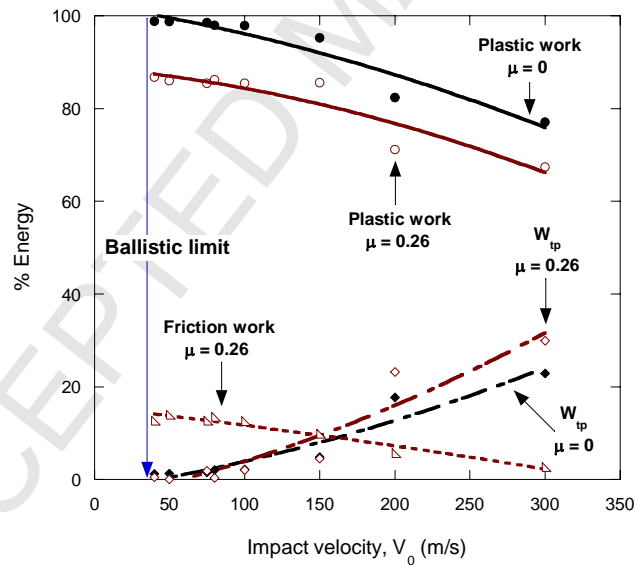
Figure 22

Fig.22 Energy balance of the perforation process analyzed via RK constitutive relation

Figure 23

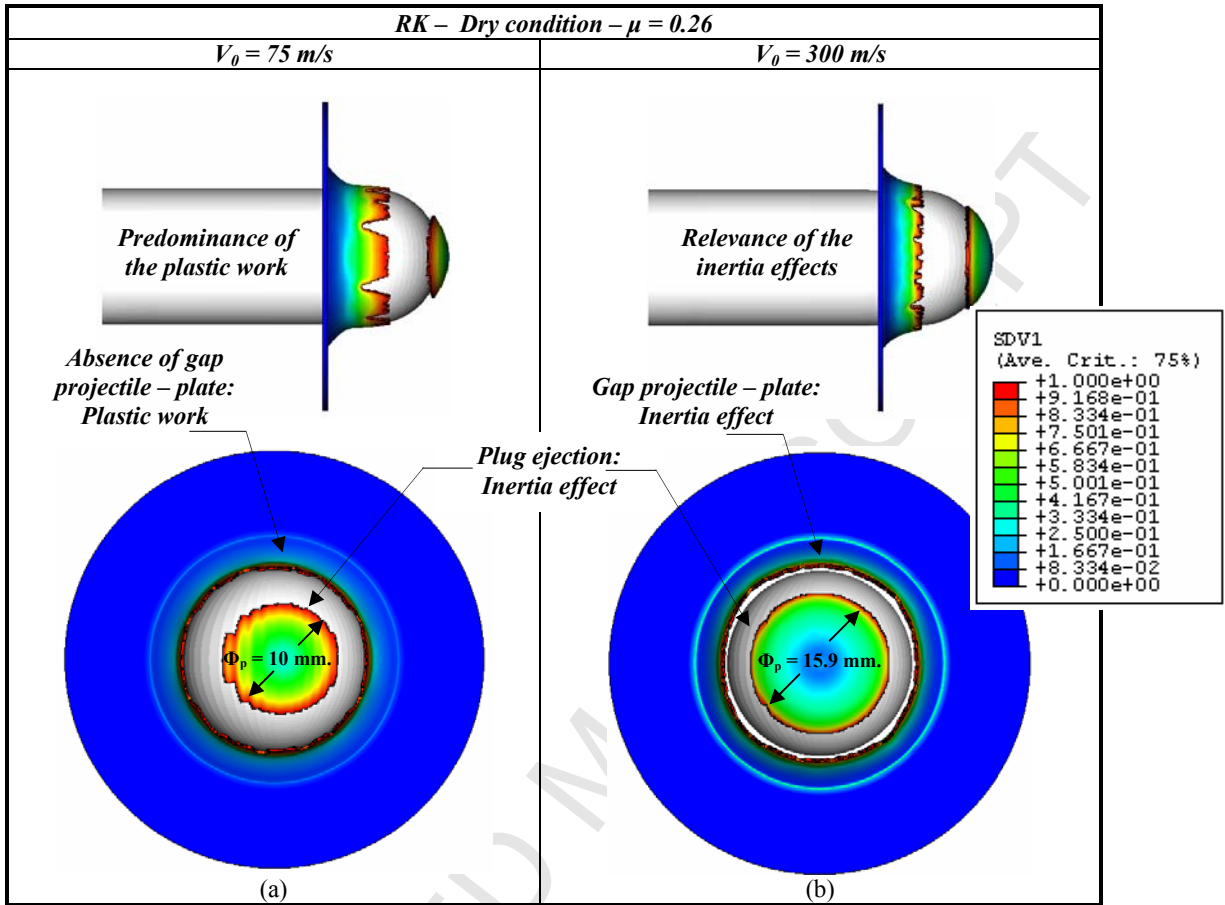


Fig.23. Equivalent plastic strain contours. Gap between projectile – plate predicted via RK constitutive relation, Dry condition. (a) - $V_0 = 75$ m/s , (b) - $V_0 = 300$ m/s

Figure 24

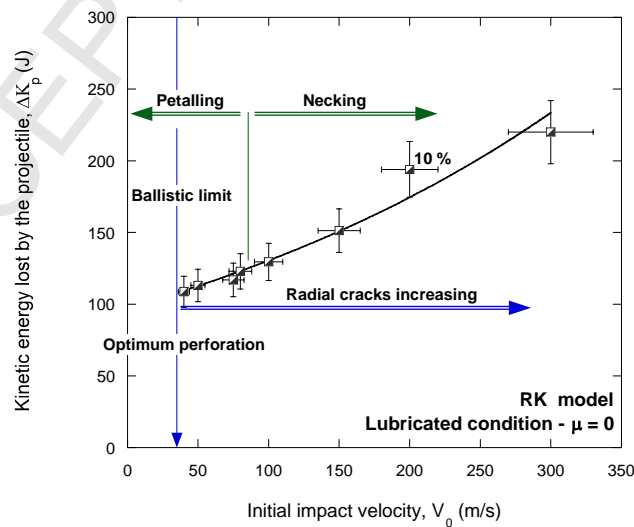


Fig.24 Kinetic energy ΔK_p (J) lost by the projectile as predicted by application of RK constitutive relation and ideal lubrication, $\mu = 0$

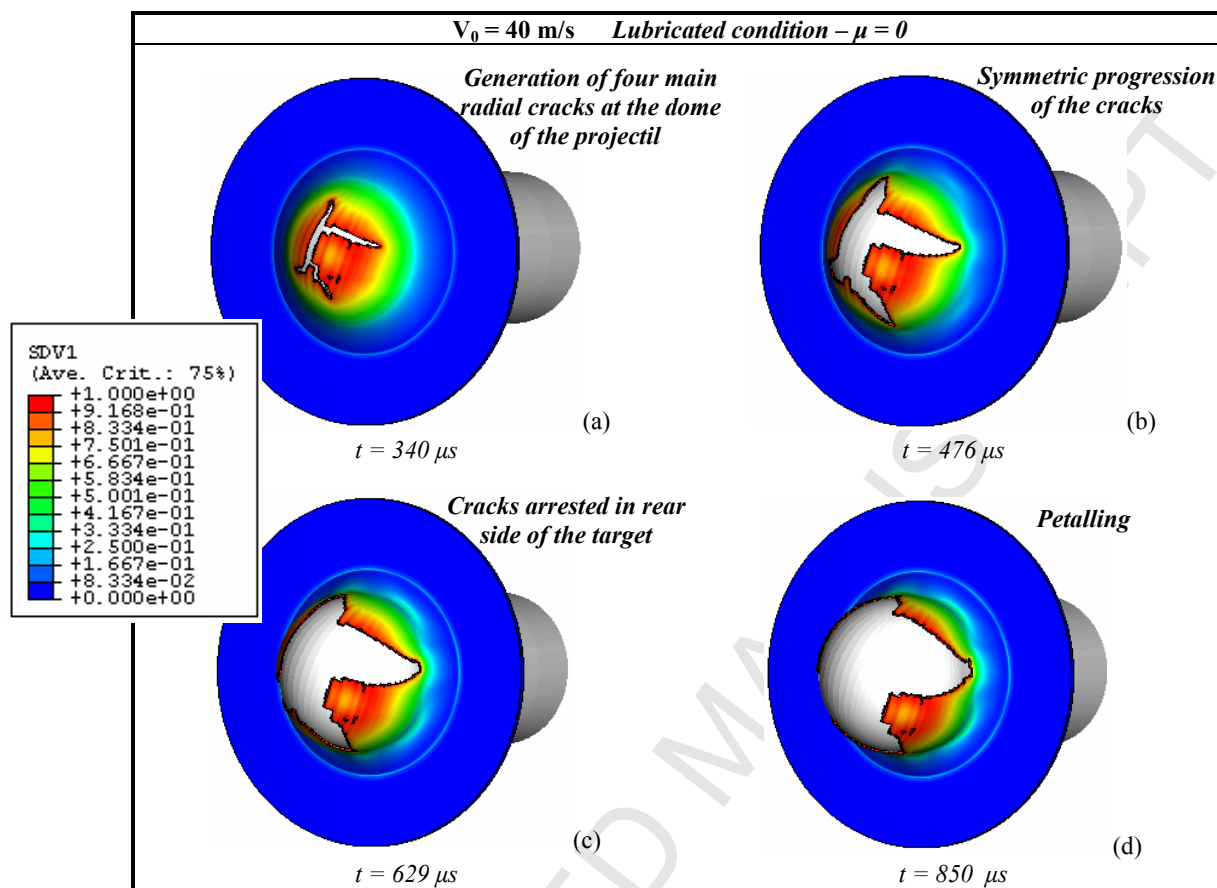
Figure 25

Fig. 25. Equivalent plastic strain contours during petalling process using RK constitutive relation.
 $V_0 = 40 \text{ m/s}$.Lubricated condition – $\mu = 0$

Figure 26

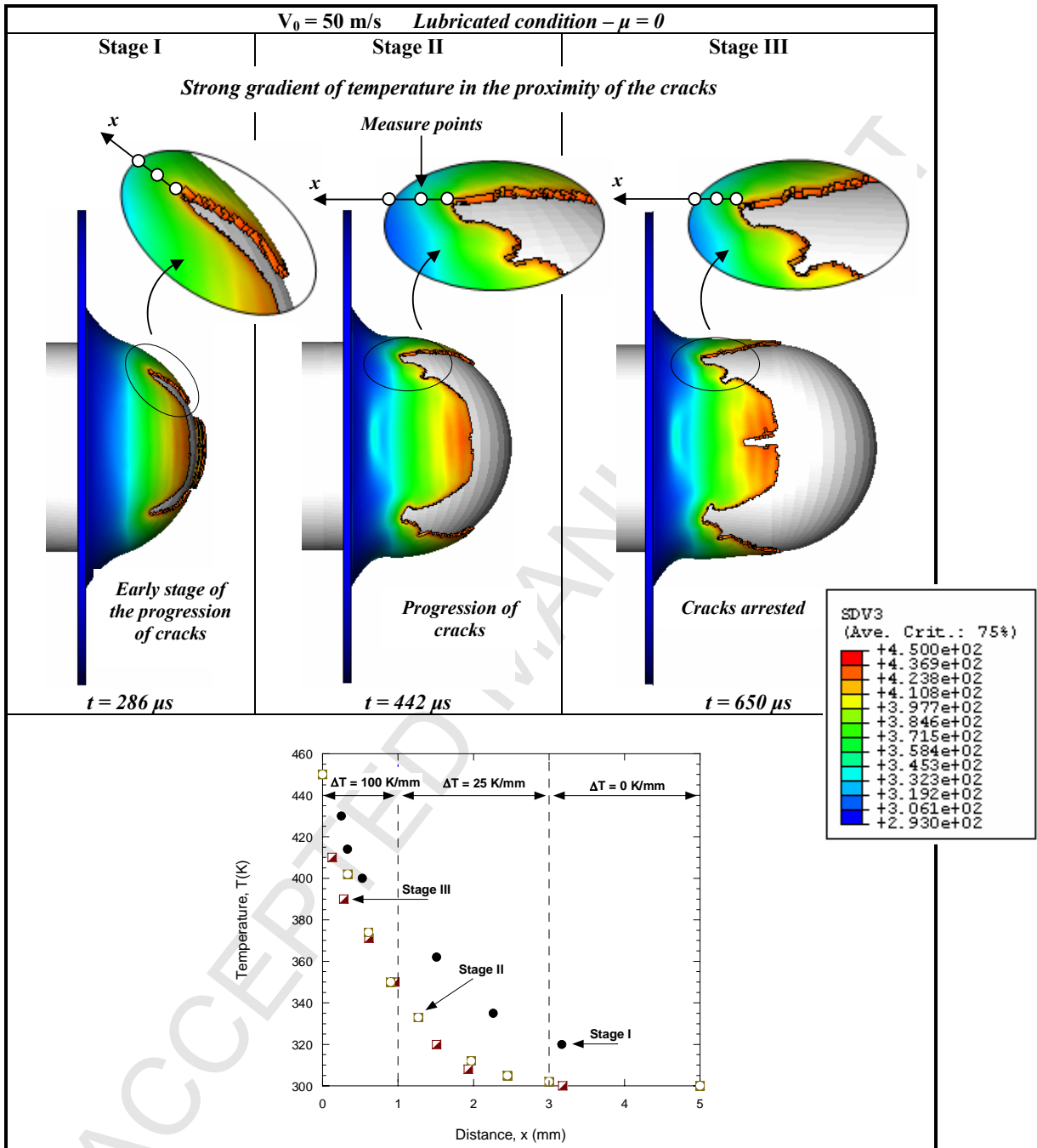


Fig.26 (a)- Temperature contours during petalling process [K]; (b) - Temperature values vs. distance from the bottom of the crack, simulation with RK constitutive relation. $V_0 = 50 \text{ m/s}$; Lubricated condition – $\mu = 0$

Tables**Table 1**

Table 1
Chemical composition of the mild steel ES (% of wt)

| Mn | Al | Cr | C | Ni | S | Cu | Si | P | N | Ti |
|-------|-------|-------|------|-------|-------|-------|-------|-------|--------|-------|
| 0.203 | 0.054 | 0.041 | 0.03 | 0.018 | 0.011 | 0.009 | 0.009 | 0.008 | 0.0063 | 0.002 |

ACCEPTED MANUSCRIPT