



HAL
open science

Candidate models for the IGRF-11th generation making use of extrapolated observatory data

Aude Chambodut, Benoît Langlais, Michel Menvielle, Erwan Thébault, Arnaud Chulliat, Gauthier Hulot

► To cite this version:

Aude Chambodut, Benoît Langlais, Michel Menvielle, Erwan Thébault, Arnaud Chulliat, et al.. Candidate models for the IGRF-11th generation making use of extrapolated observatory data. *Earth Planets and Space*, 2010, 62 (10), pp.745-751. 10.5047/eps.2010.06.006 . hal-00558301

HAL Id: hal-00558301

<https://hal.science/hal-00558301>

Submitted on 16 Jul 2020

HAL is a multi-disciplinary open access archive for the deposit and dissemination of scientific research documents, whether they are published or not. The documents may come from teaching and research institutions in France or abroad, or from public or private research centers.

L'archive ouverte pluridisciplinaire **HAL**, est destinée au dépôt et à la diffusion de documents scientifiques de niveau recherche, publiés ou non, émanant des établissements d'enseignement et de recherche français ou étrangers, des laboratoires publics ou privés.

Candidate models for the IGRF-11th generation making use of extrapolated observatory data

Aude Chambodut¹, Benoit Langlais², Michel Menvielle^{3,4}, Erwan Thébault⁵, Arnaud Chulliat⁵, and Gauthier Hulot⁵

¹*Institut de Physique du Globe de Strasbourg (UMR 7516-CNRS, Université de Strasbourg/EOST), Strasbourg, France*

²*Laboratoire de Planétologie et Géodynamique de Nantes (UMR 6112-CNRS, Université de Nantes), Nantes, France*

³*Université Versailles-St Quentin; CNRS/INSU, LATMOS-IPSL, Paris, France*

⁴*Département des Sciences de la Terre, Univ. Paris Sud, Orsay, France*

⁵*Institut de Physique du Globe de Paris, Équipe de Géomagnétisme (UMR 7154-CNRS, Université Paris Diderot), Paris, France*

(Received December 8, 2009; Revised June 20, 2010; Accepted June 22, 2010; Online published December 31, 2010)

Three candidate models are produced in response to the call for IGRF-11 models. A main field model around epoch 2005.0 is based on one year of Ørsted and CHAMP measurements, and is proposed for the definitive model for epoch 2005.0. A main field model around epoch 2009.5, based on two months of CHAMP measurements and extrapolated to 2010.0, is proposed as a main field model for epoch 2010.0. A secular variation model valid for 2010.0–2015.0, based on the extrapolation through exponential smoothing of observatory monthly mean values, is proposed as a predictive secular variation model. Comparison of similar extrapolations made for previous IGRF generations with actual observations are presented and discussed.

Key words: Magnetic field, main field, secular variation, modeling, IGRF, time extrapolation.

1. Introduction

The International Geomagnetic Reference Field (IGRF) is a time series of Gauss coefficients, describing the large-scale part of the Earth's magnetic field of internal origin. Since the 9th generation of IGRF (Macmillan *et al.*, 2003) coefficients are given up to degree and order 13. IGRF models therefore describe the Main Field (MF) and its Secular Variation (SV), whose sources are located in the Earth's outer core.

The 11th generation of the IGRF model is an update of the previous generation, with new definitive MF coefficients for epoch 2005.0, provisional (and predictive) MF coefficients for epoch 2010.0 and predictive SV coefficients for epoch 2010–2015 (up to degree and order 8). In this paper, we present the candidate models that were prepared and submitted by a consortium made of the Institut de Physique du Globe de Strasbourg, the Laboratoire de Géodynamique et de Planétologie de Nantes, the Laboratoire Atmosphères, Milieux, Observations Spatiales and the Institut de Physique du Globe de Paris. In the following we describe the datasets and the methodology, with special attention to the predictive SV, by analyzing similar predictions that were made in the frame of the 8th generation of the IGRF (Langlais and Manda, 2000; Manda *et al.*, 2000b).

2. Main Field Model for Epoch 2005.0

The MF model at epoch 2005.0 is made of definitive coefficients and aims at describing the large-scale internal

part of the magnetic field of the Earth as accurately as possible for a given epoch within the model limitations. We computed a parent model, using standard data selection criteria and model parameterization.

2.1 Data

Our model is based on CHAMP and Ørsted satellite magnetic field measurements. These spacecrafts were launched in 1999 and 2000, respectively (Olsen *et al.*, 2000; Reigber *et al.*, 2002). These successful missions considerably improved the way the magnetic field is described and modeled. Prior to these spacecrafts, and with the exception of the MAGSAT mission, it was indeed difficult to accurately describe the main magnetic field, even in the frame of IGRF models (Lowes *et al.*, 2000).

The dataset spans a twelve-month period, from July 2004 to June 2005. It contains Ørsted and CHAMP, vector (northward B_x , eastward B_y and downward B_z field components) and total field measurements. Data (with 1s sampling rate) were first decimated along track, keeping only one measurement out of ten. Then a selection scheme was used to minimize the magnetic fields of external origin. First, only scalar measurements were considered above 50° absolute geomagnetic latitude. Second, a local time 22:00–06:00 selection was applied. Third, activity indices were used to select the quietest measurements.

K -derived geomagnetic indices, and in particular the K_p planetary index, are classically used to achieve this selection. The success of this approach for estimating external source contamination in the magnetic data used for internal field calculations results from the fact that K indices derive from ground-based magnetic variations, thus providing reliable upper bounds to the mid-latitude, external transient fields at satellite altitude, as demonstrated by Mareschal and

Menvielle (1986).

It is however well established that the intensity of geomagnetic activity is statistically more intense during night-time than during day-time. One way to improve the selection of satellite measurements with respect to magnetic quietness is therefore to characterize geomagnetic activity at a regional scale, so that its LT dependence is taken into account. Menvielle and Paris (2001) proposed a longitude sector index, the a_λ index, derived using K indices from the a_m observatory network. The a_λ index thus provide a better selection of magnetic quietness time intervals, and it enables one to achieve a more accurate modelling, as shown for instance by Cohen and Achache (1990) and Thomson and Lesur (2007). The reader is referred to Menvielle and Berthelier (1992) or Menvielle *et al.* (2010) for further details on K_p and a_m indices.

Another way to improve the selection of satellite measurements with respect to magnetic quietness is to reduce the duration of the time window over which the geomagnetic index is computed. Menvielle (1979) showed that the K index is a proxy of the magnetic energy density related to the geomagnetic activity, because the time scale of the observed geomagnetic variations is less than the 3-hour length of the interval for which K is measured. He however also showed that such a range index is no longer a proxy of this energy if the length of the interval over which it is measured is significantly smaller than 3 hours. Reducing the length of the time interval over which the index is calculated implies the use of another proxy. Because of the Poynting theorem, the root mean square (rms) value of the irregular variations in the horizontal field components is directly related to the magnetic energy related to the geomagnetic activity. Indeed, empirical histograms of the range vs rms distributions at a_m observatories and for 3-hour intervals show that their range is statistically proportional to the rms value, with a 30–50% dispersion (Menvielle *et al.*, 2010). In fact, Menvielle (2003) already proposed to derive new geomagnetic indices based on the rms of the irregular variations in the horizontal components: the $\alpha_{m,nn}$ indices (unit: nT), where nn is the length (in minutes) of the considered time interval. In the present study, we use such rms indices with a 30-minute resolution interval, the α_{m30} indices. They are derived from minute values recorded at a network of about 20 INTERMAGNET mid-latitudes observatories evenly distributed in longitude in both hemispheres.

In the following, only measurements associated with α_{m30} ranging between 0 and 4 nT were kept. An additional selection was done with respect to the D_{st} geomagnetic activity index, with a limit set to $|D_{st}(t)| < 30$ nT and a maximum time derivative of $|dD_{st}(t)/dt| < 10$ nT/hr. We further decimated the dataset, by keeping a maximum of one measurement in each $1^\circ \times 1^\circ$ bin for each month. Whenever more than one measurement was present, the one associated with lowest indices was kept. The final dataset contains 144004 (CHAMP scalar), 88971 (CHAMP vector triplets), 92790 ($\text{\O}rsted$ scalar), and 13674 ($\text{\O}rsted$ vector triplets) measurements. The distribution of the final dataset was checked: there is at least one measurement in each $3^\circ \times 3^\circ$ bin.

2.2 Modeling and results

We used the above described dataset to derive a magnetic field model for epoch 2005.0. It is computed up to degree and order 15 for the main field, with a SV up to degree and order 8. The external field is modeled up to degree and order 2, with a degree-1 D_{st} dependency.

$\text{\O}rsted$ data were weighted using an anisotropic scheme, to reflect the uncertainty related to attitude provided by the Star Imager (Holme, 2000). In contrast, as the selected CHAMP data were all acquired when both CHAMP star imagers were operating, all CHAMP data were isotropically weighted. $\text{\O}rsted$ and CHAMP data were assigned a relative $1/\sigma^2$ weight, with σ equal to 2 nT and 3 nT for CHAMP and $\text{\O}rsted$, respectively. For each satellite dataset, equal weights were given to scalar and vector measurements. A further $\sin(\theta)$ weighting scheme was applied to counterbalance the denser data distribution near the poles.

The inverse problem was linearized and solved using a least square method (Cain *et al.*, 1967). The choice of the model for the first iteration has no importance on the final result (Ultré-Guérard, 1996). We did not use any regularization. Convergence was reached after 3 iterations. The final rms differences for the twelve-month model are:

$\text{\O}rsted$: 4.14 nT (scalar)

$\text{\O}rsted$: 3.41 nT (B_B), 11.43 nT (B_\perp), 6.77 nT (B_3).

CHAMP: 7.87 nT (scalar)

CHAMP: 4.87 nT (B_X), 4.86 nT (B_Y), 5.22 nT (B_Z)

As expected, $\text{\O}rsted$ rms differences are larger in the direction that is perpendicular to the field and the Star Imager bore sight (B_\perp), and lower in the direction of the field (B_B) and in the third complementary direction (B_3). CHAMP rms differences are larger than those of $\text{\O}rsted$, but this is likely related to the lower altitude of the spacecraft, which orbited closer to unmodeled ionospheric sources. Although those rms differences could have led us to modify our data weighting scheme, we decided not to do so, for simplicity. Our candidate model for IGRF-11 epoch 2005.0 is the truncated (to degree and order 13) and rounded (to the nearest 0.01 nT) version of the model based on our twelve-month dataset.

3. Main Field Model for Epoch 2010.0

The IGRF-11 describes the magnetic field of internal origin up to degree and order 13 at epoch 2010.0. We computed this predictive model in two steps. First, we developed an internal field model based on very recent CHAMP satellite magnetic measurements. Second we extrapolated this model to epoch 2010.0 using by-products of the SV model series as described in Section 4.

3.1 Data

In order to minimize the errors related to model extrapolation, we chose to build our model using the most recent available magnetic measurements. We used CHAMP scalar and vector data between June and July 2009, which was the last period when both vector and scalar data were available when this model was produced.

Very similar criteria to those used in Section 2 were applied. Only the activity index criteria changed. The following limits for the D_{st} index were applied: $|D_{st}(t)| <$

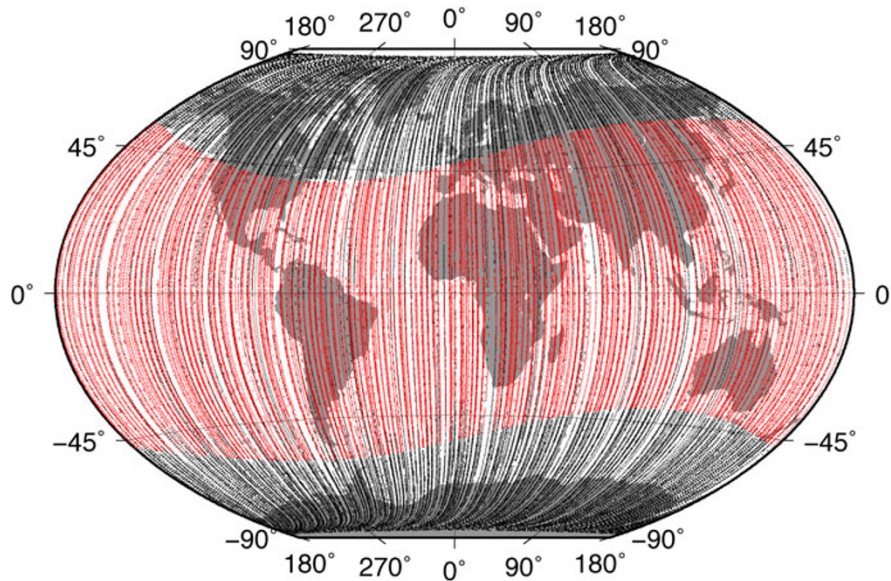


Fig. 1. CHAMP data distribution used in the elaboration of the main-field model for epoch 2010.0: *red* points correspond to vector triplets data and *black* points to scalar measurements.

5 nT and a maximum time derivative of $|dD_{st}(t)/dt| < 3$ nT/hr; and for the planetary index: $K_p(t) < 1+$ and $K_p(t \pm 3 \text{ hr}) < 2-$. The magnetic sectorial index α_m we used for the 2005.0 model was not considered here, as it was not yet available.

The data distribution was finally homogenized as much as possible, keeping a maximum of 10 measurements per $3^\circ \times 3^\circ$ bin. When a bin contained more than 10 measurements, the furthest ones from 00:00 local time were withdrawn. The global geographical distribution of data was checked: there are at least two measurements in each $4^\circ \times 4^\circ$ bin over the entire surface (Fig. 1). The final dataset consists of 66027 scalar measurements and 55111 vector triplets. This large number of measurements (for a two-month period, and when compared to the twelve-month period of the previous section) may be explained by the fact that June/July 2009 was a very quiet magnetic period at the end of a solar minimum.

3.2 Modeling and results

The dataset described is used to derive a main field model up to degree and order 15, without any secular variation, but with an external field up to degree and order 2. Because we set a much narrow range for the D_{st} selection than for the 2005.0 model, no D_{st} dependency was introduced. Equal weights were given to scalar and vector measurements. A $\sin(\theta)$ weighting scheme was used to counterbalance the denser data distribution near the poles.

We used the same inversion method as in Section 2.2. The final rms differences are 10.18 nT for scalar data, and 6.60, 4.05 and 11.90 nT for the B_X , B_Y and B_Z components, respectively.

The model we computed has a mean date equal to 2009.485. We extrapolated this model to 2010.0. We used two annual SV models (each one valid for one year and centered on the first day of the year, as described in Section 4): SV2009 (multiplied by 0.015, i.e. the time difference between the model date and 2009.5) and SV2010 (multiplied

by 0.5, i.e. the time difference between 2009.5 and the final model date 2010.0). Only terms for degree lower or equal to 8 were extrapolated, terms for higher degrees were unchanged. The 2010.0 model may therefore contain some error associated with (1) the extrapolation for degree $n \leq 8$ and (2) the non extrapolation of higher degree terms. Our candidate model for IGRF-11 epoch 2010.0 is the truncated (to degree and order 13) and rounded (to the nearest 0.01 nT) version of this extrapolated parent model.

4. Internal Field Secular Variation for Epoch 2010.0 to 2015.0

The last model that is proposed for the IGRF-11 is the secular variation one. This model aims at describing the time evolution of the magnetic field between 2010.0 and 2015.0, assuming a constant rate of change. It is therefore a predictive model, based on the extrapolation of past variations. One method (as used by other groups, e.g. Thébaud *et al.*, 2010, this issue) is to jointly model the magnetic field and its secular variation, using temporal splines or linear/quadratic variation. An alternative choice is to model only magnetic time variations as observed in magnetic observatories. This is the approach we chose here, because it allows the temporal variations of the magnetic field to be better identified and separated from the geographical variations, thanks to the observatory database. It also minimizes possible contamination by the primary ionospheric field since observatories are located below the ionosphere.

4.1 Data

Our approach is similar to that of Langlais and Mandea (2000) which they used to propose a candidate SV model for IGRF-08. However, whereas Langlais and Mandea (2000) computed SV models by first difference of successive MF models, we directly computed annual SV models from the difference of observatory annual means, bypassing in fact the intermediate computation of MF.

Hourly mean values since 1980 were collected from the

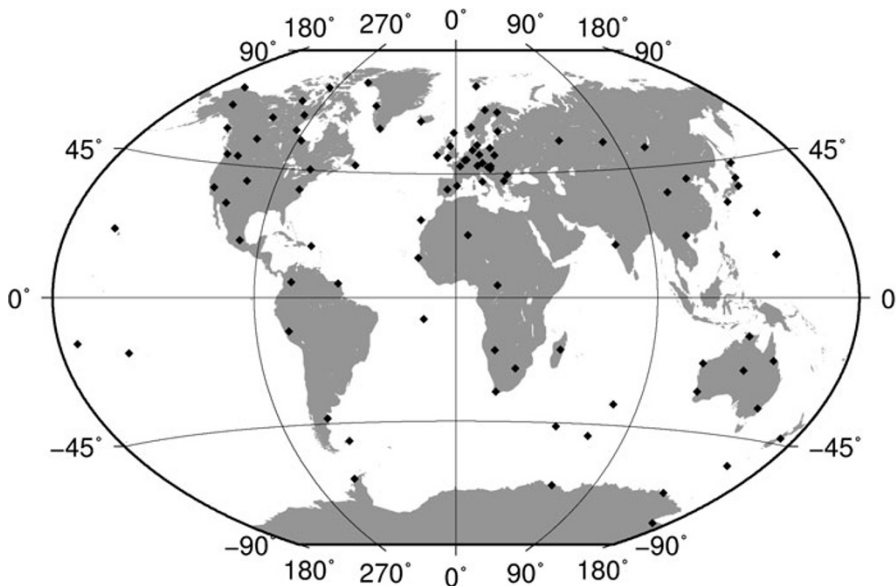


Fig. 2. The 96 geomagnetic observatories used to calculate the secular variation model series.

World Data Center C1 in Edinburgh, and monthly mean values were computed. We disregarded observatories for which time series were shorter than 11 years. Out of a gross total of 200 observatories providing hourly mean values between 1980 and 2008, only 96 observatories were selected for this study. Many of them were rejected because they ceased operations before (or did not provide data after) 2007, some others were rejected because of very long data gaps. Time series were plotted and individually checked to disregard possible outliers, which were removed.

The obtained monthly mean values were compared with two other datasets: the IGP monthly means database (Chulliat and Telali, 2007), and the values computed (until 1998) by Langlais and Mandea (2000). This dual comparison allowed some spurious jumps to be identified and eliminated. The final dataset consists of 96 observatories (list available on request; see the geographical distribution on Fig. 2), providing monthly mean values at least between 1997 and 2007 or 2008 (inclusive). In some cases, missing values were linearly interpolated, the longest gap being 24 months.

These 96×3 time series were extrapolated until the end of 2015, using an exponential smoothing scheme, which is described as (Gardner, 2006):

$$S_t = \alpha (X_t - I_{t-p}) + (1 - \alpha) (S_{t-1} + T_{t-1})$$

$$T_t = \gamma (S_t - S_{t-1}) + (1 - \gamma) T_{t-1}$$

$$I_t = \delta (X_t - S_t) + (1 - \delta) I_{t-p}$$

$$\hat{X}_t = S_t + mT_t + I_{t-p+m}$$

At a given time t , the smoothed signal S depends on the observed signal X , on the estimated seasonal component I (of period p), as well as on the estimated additive trend T . The relative importance of these terms is determined by the smoothing parameters α , γ and δ , which describe the relative importance of the previous observation, of the exponential trend and of the seasonal part, respectively. The period of the seasonal signal was set to twelve months.

These parameters were automatically adjusted, by minimizing the rms difference between true observations and smoothed ones. The best fit was automatically computed for each time series and component, using the Statistica software (©Statsoft). Series are then extrapolated in time using the previously derived smoothing parameters, to obtain \hat{X} during m time increments. In the vast majority of the cases, δ was found to be equal to 0, i.e. the seasonal part was kept constant throughout the whole time series. Most of the time, γ was also found to be small, close to 0.05, meaning that the previously observed trend was only slowly varying. The last smoothing parameter α had larger values, between 0.5 and 1.

Time series of true, interpolated and extrapolated data were plotted and individually examined. In some cases where the result of the extrapolation appeared odd, extrapolations were compared with provisional hourly means (obtained from observatories or from INTERMAGNET), to validate extrapolated trends. All of them were visually inspected, confirming the relevance of the smoothing and extrapolation scheme for recent changes. Annual means were thereafter derived from the monthly means, between 1980.5 and 2015.5. We then computed annual differences at each observatories, from 1981.0 to 2015.0.

Predicting the time variations of the magnetic field is challenging. The accuracy of our extrapolations cannot be tested for now, but we can test the level of confidence of the method by comparing past predictions to actual observations. Langlais and Mandea (2000) used a similar scheme when they extrapolated observatory monthly mean values over intervals of two to three years until the end of 2000. They considered 93 observatories in their study. Because some of them were closed, and the data at some others were degraded, we were able to compare their predictions to actual monthly mean values at only 54 observatories.

The length of the predicted interval ranged between 24 and 36 month. We computed rms differences between observed and predicted monthly mean values. They vary be-

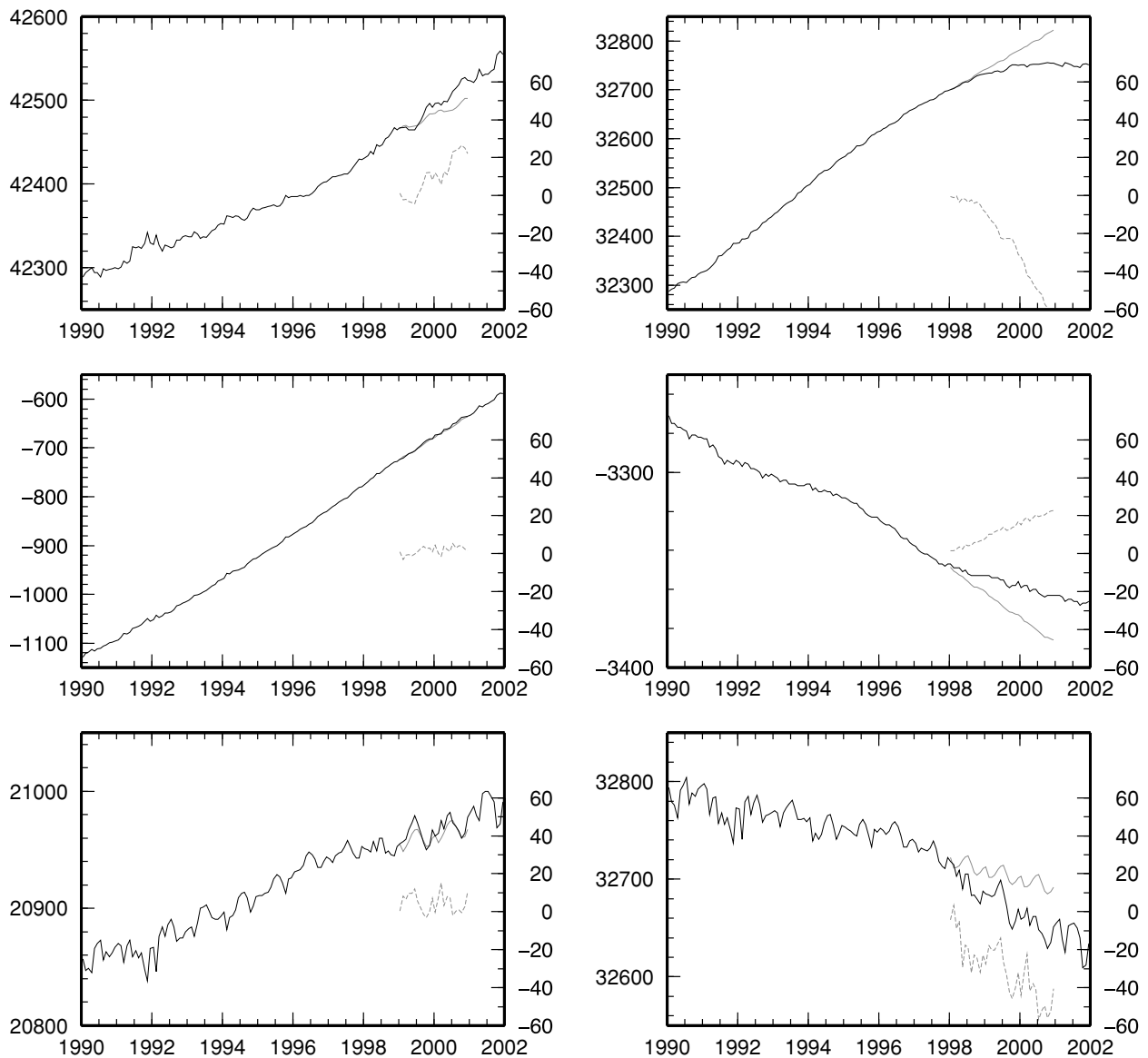


Fig. 3. Comparison of observed (solid black line) and predicted (solid gray line) monthly mean values for Chambon La Forêt (CLF) and Kanoya (KNY) observatories by Langlais and Manda (2000). Differences (dashed gray line) are shown on the right axis.

tween 3.82 and 22.33 nT for B_X , 1.77 and 17.58 nT for B_Y , and 3.59 and 35.39 for B_Z . The average rms difference is 8.8, 6.1 and 11.45 nT for the three components, respectively. Only 2 or 3 resulting annual means were extrapolated, and it is not possible to derive robust statistics for these.

We show on Fig. 3 two examples of such extrapolations, made by Langlais and Manda (2000). The first one is in Chambon La Forêt (CLF-France), and represents well other observatories in Europe, where predictions matched observations relatively well. The second one is in Kanoya (KNY-Japan), and is one of the observatories where the predictions failed. There is a clear change in the trend of all three components around 1998, which is not reproduced by the extrapolation. At the end of the 3-year extrapolation interval, errors on field components reached up to 60 nT.

The abrupt change observed around 1998 at KNY may be related to a geomagnetic jerk, occurring at or near epoch 2000 (Manda *et al.*, 2000a; Maus *et al.*, 2005). At CLF,

this jerk occurred in 1998.0, i.e. prior to the extrapolation period. An abrupt change also happened at KNY around the same period, but this occurred during the extrapolation period. Clearly, abrupt changes in the secular variation trend can not be predicted by our method. On the other hand, the physics associated with magnetic jerks is still poorly understood, and it is not possible to accurately predict these events (Jackson and Finlay, 2007).

4.2 Modeling

This approach allows us to model the temporal evolution only without having to take local crustal field values into account (Manda and Langlais, 2002). Annual differences based on observations and/or on extrapolations were used to compute SV models for each year between 1980 and 2015. Gauss coefficients for the internal field up to degree and order 8 were computed, as well as up to degree 1 for the external field. The degree-one modeling of the external field was performed to take into account the possible year-to-year variations of the mean magnetospheric field.

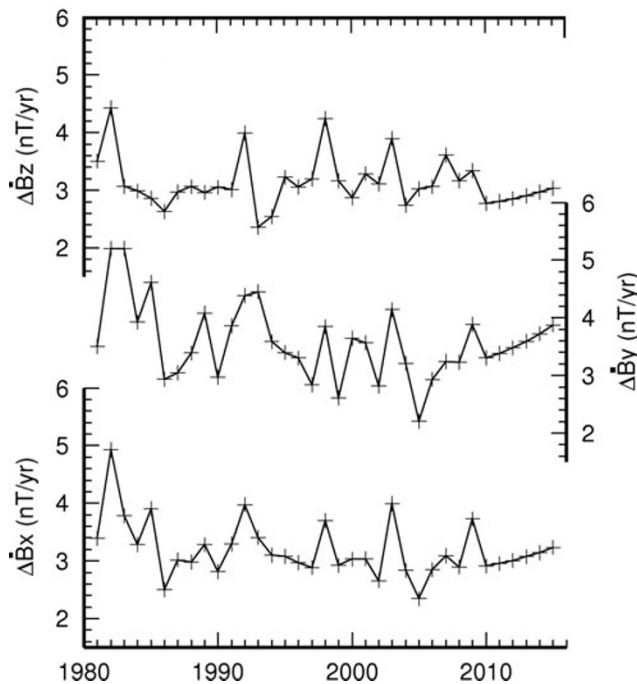


Fig. 4. Temporal evolution of the rms differences associated with the annual SV models. Models posterior to 2009 are based on extrapolated data.

The same modeling scheme as previously was used. Each individual observatory annual mean (based on real observations or on extrapolated ones) was weighted accordingly to the inverse of the mean distance to the four closest observatories in the four NW, NE, SE and SW quadrants, as detailed in Langlais and Manda (2000). The fit to the \dot{B}_X , \dot{B}_Y and \dot{B}_Z field component differences varies from one year to the next one (Fig. 4). Prior to 2008.0 (i.e., for models based on true observations), rms errors ranged between 2.50 and 4.92 $\text{nT}\cdot\text{yr}^{-1}$ for \dot{B}_X , 2.21 and 5.20 $\text{nT}\cdot\text{yr}^{-1}$ for \dot{B}_Y , and 2.35 and 4.43 $\text{nT}\cdot\text{yr}^{-1}$ for \dot{B}_Z . After 2008 (i.e. for models based on extrapolated data), errors on field component variations ranged between 2.89 and 3.72 $\text{nT}\cdot\text{yr}^{-1}$ for \dot{B}_X , 3.23 and 3.88 $\text{nT}\cdot\text{yr}^{-1}$ for \dot{B}_Y , and 2.77 and 3.34 $\text{nT}\cdot\text{yr}^{-1}$ for \dot{B}_Z .

Interestingly, there is an apparent correlation between the rms errors for each field component differences. Rms maxima are observed in 1992–1993, 1998, and 2003. These actually correspond to periods when jerks were observed (Chambodut and Manda, 2005; Chulliat *et al.*, 2010). There is a last occurrence over 2007–2009. It might be artificial in our study, because the computed rms differences are based on a mix of observed and extrapolated annual differences, but a jerk was nonetheless observed in 2007 and 2008 at some observatories, mostly at mid-latitude (Chulliat *et al.*, 2010).

4.3 Results

Our series of models is made of 35 SV models, from 1981.0 to 2015.0. This long time series allowed us to check the validity of the modeled secular variation prior to epoch 2008. We averaged the last six models, with a weight of 1/2 for SV2010 and SV2015, and 1 for the others. Our final candidate model is therefore centered on 2012.5. Individual coefficient errors associated with the averaging process (i.e.

based on the rms differences between the final candidate model and the six models above mentioned) are very small and meaningless, and do not represent the possible time evolution of the SV. We chose instead to compute the rms differences between SV2005, SV2006, SV2007 and SV2008 models on one hand, and their arithmetical mean on the other hand. These individual coefficient rms are actually proportional to the observed changes of the SV (i.e. the secular acceleration) during these four years.

Our SV candidate model for IGRF-11 (valid for the period 2010.0–2015.0 and centered in 2012.5) is a rounded (to the nearest 0.01 $\text{nT}\cdot\text{yr}^{-1}$) version of this model, up to degree/order 8, with associated rms errors.

5. Discussion and Conclusion

We presented three candidate models for IGRF-11. These models were computed using very simple parametrization, without regularization or temporal splines. Our model for epoch 2005.0 is based on one year of satellite measurements, and the parent model has a truncated linear secular variation up to degree and order 8. The parent model of our candidate model for epoch 2010.0 is based on only two months of CHAMP measurements, then extrapolated with a predictive SV. Our predictive secular variation model for epoch 2010.0–2015.0 is built with observatory annual differences based on the extrapolation of observatory monthly means.

The comparison of past predictions to actual observations sets the limits of our approach. As expected, time extrapolation of monthly (or annual) mean series is valid provided that these variations remain more or less linear. Differences between our extrapolated annual means and the observed ones at a given observatory may be larger than 100 nT at the end of the considered 2010–2015 period. These relatively large errors have to be compared to the differences between the IGRF-8 and IGRF-9 at epoch 1995.0 or at epoch 2000.0 (definitive coefficients for these epochs were adopted for IGRF-9), which reached 200 to 300 nT in many locations at the surface of the Earth (Chambodut *et al.*, 2005).

During the past decade, the successful Ørsted and CHAMP satellite missions have allowed major breakthroughs in the description and understanding of the magnetic field of the Earth (Hulot *et al.*, 2007). The upcoming SWARM mission will include two spacecrafts flying side-by-side at a low altitude, and a third one at a higher orbit (Friis-Christensen *et al.*, 2006). This configuration will help to better characterize the small scales of the magnetic field, which include the time evolution of the field. However, this mission will be fruitful only if the efforts in promoting and maintaining surface magnetic observatories are pursued. The recent or scheduled closure of such magnetic observatories is worrying, because the success of the SWARM mission partly relies on the long term observation of the current magnetic field.

Acknowledgments. The authors thank S. Macmillan and N. Olsen for their constructive reviews. They also wish to express their thanks to the many observatories and agencies world-wide (World Data Centers for Geomagnetism, International Service of Geomagnetic Indices, INTERMAGNET) who forwarded their data, and to thank the many scientists and engineers who con-

tributed to the development, the launch and the ground section of the Ørsted and CHAMP missions. The CHAMP data were kindly provided by V. Lesur and M. Hamoudi (GFZ). The Ørsted data were collected by IPGP M. Roharik (IPGP). All maps have been plotted using the General Mapping Tool Software (Wessel and Smith, 1991). This study was partly supported by CNES. This is IPGP contribution N° 3036.

References

- Cain, J. C., S. J. Hendricks, R. A. Langel, and W. V. Hudson, A proposed model for the International Geomagnetic Reference Field -1965, *J. Geomag. Geoelectr.*, **19**, 335–355, 1967.
- Chambodut, A. and M. Manda, Evidence for geomagnetic jerks in comprehensive models, *Earth Planets Space*, **57**, 139–149, 2005.
- Chambodut, A., B. Langlais, and M. Manda, Candidate main-field models for the Definitive Geomagnetic Reference Field 1995.0 and 2000.0, *Earth Planets Space*, **57**, 1197–1202, 2005.
- Chulliat, A. and K. Telali, World monthly means database project, in *Proc. of the XIIth IAGA Workshop on Geomagnetic Observatory Instruments, Data Acquisition and Processing. Publs. Inst. Geophys. Pol. Acad. Sc.*, **C-99**, 268–274, 2007.
- Chulliat, A., E. Thébaud, and G. Hulot, Core field acceleration pulse as a common cause of the 2003 and 2007 geomagnetic jerks, *Geophys. Res. Lett.*, **37**, L07301, doi:10.1029/2009GL042019, 2010.
- Cohen, Y. and J. Achache, New global vector magnetic anomaly maps derived from MAGSAT data, *J. Geophys. Res.*, **95**, 10783–10800, 1990.
- Friis-Christensen, E., H. Lühr, and G. Hulot, Swarm: A constellation to study the Earth's magnetic field, *Earth Planets Space*, **58**, 351–358, 2006.
- Gardner Jr., E. S., Exponential smoothing: The state of the art—Part II, *Int. J. Forecasting*, **22**, 637–666, 2006.
- Holme, R., Modeling of attitude error in vector magnetic data: application to Ørsted data, *Earth Planets Space*, **52**, 1187–1197, 2000.
- Hulot, G., N. Olsen, and T. J. Sabaka, The present field, in *Treatise on Geophysics, vol. 5, Geomagnetism vol. 5*, edited by M. Kono, 33–75, Elsevier, Amsterdam, The Netherlands, 2007.
- Jackson, A. and C. Finlay, Geomagnetic secular variation and its applications, in *Treatise on Geophysics, vol. 5, Geomagnetism vol. 5*, edited by M. Kono, 147–193, Elsevier, Amsterdam, The Netherlands, 2007.
- Langlais, B. and M. Manda, An IGRF candidate main geomagnetic field model for epoch 2000 and a secular variation model for 2000–2005, *Earth Planets Space*, **52**, 1137–1148, 2000.
- Lowe, F. J., T. Bondar, V. P. Golovkov, B. Langlais, S. MacMillan, and M. Manda, Evaluation of the candidate Main Field model for IGRF 2000 derived from preliminary Ørsted data, *Earth Planets Space*, **52**, 1183–1186, 2000.
- Macmillan, S., S. Maus, T. Bondar, A. Chambodut, V. Golovkov, R. Holme, B. Langlais, V. Lesur, F. Lowe, H. Lühr, W. Mai, M. Manda, N. Olsen, M. Rother, T. Sabaka, A. Thomson, and I. Wardinski, The 9th-Generation International Geomagnetic Reference Field, *Phys. Earth Planet. Inter.*, **140**, 253–254, 2003.
- Manda, M. and B. Langlais, Observatory crustal magnetic biases during MAGSAT and Ørsted satellite missions, *Geophys. Res. Lett.*, **29**, doi:10.1029/2001GL013693, 2002.
- Manda, M., É. Bellanger, and J. L. Le Mouél, A geomagnetic jerk for the end of the 20th century?, *Earth Planet. Sci. Lett.*, **183**, 369–373, 2000a.
- Manda, M., S. Macmillan, T. Bondar, V. Golovkov, B. Langlais, F. Lowe, N. Olsen, J. Quinn, and T. Sabaka, International geomagnetic reference field—2000, *Pure Appl. Geophys.*, **157**, 1797–1802, 2000b.
- Mareschal, M. and M. Menvielle, On the use of K indices to define maximum external contributions to MAGSAT data at mid-latitudes, *Phys. Earth Planet. Inter.*, **43**, 799–204, 1986.
- Maus, S., S. McLean, D. Dater, H. Lühr, M. Rother, W. Mai, and S. Choi, NGDC/GFZ candidate models for the 10th generation International Geomagnetic Reference Field, *Earth Planets Space*, **57**, 1151–1156, 2005.
- Menvielle, M., A possible geophysical meaning of K indices, *Ann. Geophys.*, **35**, 189–196, 1979.
- Menvielle, M., On the possibility to monitor the planetary activity with a time resolution better than 3 hours, in *Proceedings of the Xth IAGA Workshop on Geomagnetic Instruments, Data Acquisition and Processing*, edited by L. Loubser, 246–250, HMO publication, 2003.
- Menvielle, M. and A. Berthelier, The K -derived planetary indices: description and availability, *Rev. Geophys. Space Phys.*, **29**, 415–432, 1991 (erratum, **30**, 91, 1992).
- Menvielle, M. and J. Paris, The $\alpha\lambda$ longitude sector geomagnetic indices, *Contrib. Geophys. Geodes.*, **31**, 315–322, 2001.
- Menvielle, M., T. Iyemori, A. Marchaudon, and M. Nose, Geomagnetic indices, in *IAGA Sopron Special Book Series*, edited by M. Manda and M. Korte, 2010.
- Olsen, N., R. Holme, G. Hulot, T. J. Sabaka, T. Neubert, L. Toffner-Clausen, F. Primdahl, J. Jorgensen, J. M. Leger, D. Barraclough, J. Bloxham, J. Cain, C. Constable, V. Golovkov, A. Jackson, P. Kotze, B. Langlais, S. Macmillan, M. Manda, J. Merayo, L. Newitt, M. Purucker, T. Risbo, M. Stampe, A. Thomson, and C. Voorhies, Ørsted initial field model, *Geophys. Res. Lett.*, **27**, 3607–3610, 2000.
- Reigber, C., H. Lühr, and P. Schwintzer, CHAMP mission status, *Adv. Space Res.*, **30**, doi:10.1016/S0273-1177(02)00276-4, 2002.
- Thébaud, E., A. Chulliat, S. Maus, G. Hulot, B. Langlais, A. Chambodut, and M. Menvielle, IGRF candidate models at times of rapid changes in core field acceleration, *Earth Planets Space*, **62**, this issue, 753–763, 2010.
- Thomson, A. W. P. and V. Lesur, An improved geomagnetic data selection algorithm for global geomagnetic field modelling, *Geophys. J. Int.*, **169**, doi:10.1111/j.1365-246X.2007.03354.x, 2007.
- Ultré-Guérard, P., Du paléomagnétisme au géomagnétisme spatial: analyse de quelques séquences temporelles du champ magnétique terrestre, PhD thesis, Institut de Physique du Globe de Paris, 1996.
- Wessel, P. and W. H. F. Smith, Free software helps map and display data, *EOS Trans. AGU*, **72**, 441, 1991.

A. Chambodut (e-mail: aude.chambodut@east.u-strasbg.fr), B. Langlais, M. Menvielle, E. Thébaud, A. Chulliat, and G. Hulot