



**HAL**  
open science

# Vibrational and acoustical characteristics of the piano soundboard

Kerem Ege, Xavier Boutillon

► **To cite this version:**

Kerem Ege, Xavier Boutillon. Vibrational and acoustical characteristics of the piano soundboard. 20th International Congress on Acoustics, ICA 2010, Aug 2010, Sydney, Australia. pp.427. hal-00558187

**HAL Id: hal-00558187**

**<https://hal.science/hal-00558187v1>**

Submitted on 12 Dec 2012

**HAL** is a multi-disciplinary open access archive for the deposit and dissemination of scientific research documents, whether they are published or not. The documents may come from teaching and research institutions in France or abroad, or from public or private research centers.

L'archive ouverte pluridisciplinaire **HAL**, est destinée au dépôt et à la diffusion de documents scientifiques de niveau recherche, publiés ou non, émanant des établissements d'enseignement et de recherche français ou étrangers, des laboratoires publics ou privés.

# Vibrational and acoustical characteristics of the piano soundboard

Kerem Ege and Xavier Boutillon

Laboratory for the Mechanics of Solids UMR 7649, École polytechnique, 91128 Palaiseau Cedex, France  
kerem.ege@polytechnique.edu

**PACS:** 43.75.Mn ; 43.75.Yy ; 43.40.-Rj ; 43.40.Yq

## ABSTRACT

The vibrations of the soundboard of an upright piano in playing condition are investigated. It is first shown that the linear part of the response is at least 50 dB above its nonlinear component at normal levels of vibration. Given this essentially linear response, a modal identification is performed in the mid-frequency domain [300-2500] Hz by means of a novel high resolution modal analysis technique (Ege, Boutillon and David, JSV, 2009). The modal density of the spruce board varies between 0.05 and 0.01 modes/Hz and the mean loss factor is found to be approximately 2%. Below 1.1 kHz, the modal density is very close to that of a homogeneous isotropic plate with clamped boundary conditions. Higher in frequency, the soundboard behaves as a set of waveguides defined by the ribs. A numerical determination of the modal shapes by a finite-element method confirms that the waves are localised between the ribs. The dispersion law in the plate above 1.1 kHz is derived from a simple waveguide model. We present how the acoustical coincidence scheme is modified in comparison with that of thin plates. The consequences in terms of radiation of the soundboard in the treble range of the instrument are also discussed.

## INTRODUCTION

The purpose of this study is to describe the vibration regime of the soundboard of an upright piano in playing condition in a large frequency range [300-2500] Hz with only a few parameters. To this end, we have investigated the modal behaviour of the soundboard by means of a recently published high-resolution modal analysis technique (Ege et al. 2009). Compared to techniques based on the Fourier transform, it avoids the customary frequency-resolution limitation and thus, gives access to a larger frequency-range and to a better precision on damping determinations. In the first section, we study the linearity of the board. Given the essential linear response, we present in the second section the results of two modal identifications of the soundboard from which we derive the modal density and the loss factor up to 2.5–3 kHz. The frequency evolution of the modal density of the piano soundboard reveals two well-separated vibratory regimes of the structure. The low-frequency behaviour (*homogeneous isotropic plate*) is presented in section 3 and the mid- and high-frequency behaviour (as exhibited by a *set of waveguides*) in section 4.

## LINEARITY

Nonlinear phenomena (such as jump phenomenon, hysteresis or internal resonance) appear when the vibration of a bi-dimensional structure reaches amplitudes in the order of magnitude of its thickness (Touzé et al. 2002). In the case of the piano, the soundboard displacement  $w$  measured at the bridge remains in a smaller range, even when played  $ff$  and in the lower side of the keyboard. Askenfelt and Jansson report maximum values of displacement at the bridge  $w_{\max} \approx 6 \cdot 10^{-6}$  m in the frequency range [80-300] Hz (Askenfelt and Jansson 1992). This maximum value is less than  $10^{-3}$  times the board thickness. We can therefore assume that large displacements are far to be reached and the vibrations of the soundboard can be expected as linear to a high level of approximation.

## The technique

In order to quantify experimentally the (non)linearity, we performed measurements on an upright piano soundboard. An *exponential sine sweep* technique proposed by Farina (Farina 2000), mathematically proved by Rébillat *et al.* (Rébillat et al. 2010), is used. It gives access both to the linear part of the impulse response of either system and to the nonlinear part of the response, that is the distortion level in the frequency-domain.

The technique goes as follows:

(a) Let's consider first a linear system excited by  $x(t)$ , a swept-sine of duration  $T$  with initial and final angular frequencies  $\omega_1$  and  $\omega_2$ :  $x(t) = \sin[\phi(t)]$  with the instantaneous phase  $\phi(t) = \omega_1 t + \frac{\omega_2 - \omega_1}{T} t^2$ . The impulse response  $\gamma_{\text{imp}}(t)$  can be reconstructed by a deconvolution process: the measured signal  $\gamma_{\text{meas}}(t)$  (acceleration for example) is convolved with the time-reversal of the excitation signal, that is  $\gamma_{\text{imp}}(t) = \gamma_{\text{meas}}(t) * x(-t)$ .

(b) For a system with a weakly non-linear behaviour, Farina proposes to use a sine sweep for which the frequency varies exponentially with time – *exponential sine sweep* – in order to separate the linear and nonlinear parts of the impulse response:

$$\begin{aligned} x(t) &= \cos[\phi(t)] \\ \phi(t) &= \frac{\omega_1 T}{\ln(\omega_2/\omega_1)} \left( e^{\frac{t}{T} \ln(\omega_2/\omega_1)} - 1 \right) - \pi/2 \end{aligned} \quad (1)$$

This signal verifies the fundamental property (Rébillat et al. 2010):

$$\begin{aligned} \forall k \in \mathbb{N}^*, \quad \cos[k\phi(t)] &= \cos[\phi(t + \Delta t_k)] \\ \text{where } \Delta t_k &= \frac{T \ln k}{\ln(\omega_2/\omega_1)} \end{aligned} \quad (2)$$

Multiplying the phase of a logarithmic sweep by a factor  $k$  shifts it up in time by  $\Delta t_k$ . Rébillat *et al.* shown moreover that

a logarithmic sweep to the power  $n$ ,  $x^n(t) = \cos^n[\phi(t)]$ , can be written as a linear function of  $\cos[k\phi(t)]$  with  $k \in [1, n]$  (Rébillat et al. 2010). This property is at the basis of the method for testing nonlinearity. The convolution product of the output signal  $y(t)$  with the inverted excitation signal  $x(-t)$  yields the linear impulse response preceded in time by the non-linear impulse responses of successive orders. If the excitation time  $T$  is long enough, the responses do not overlap and can be separated in time by simple windowing. The experimental problem consists in separating the sources of nonlinearity.

## Results

An upright piano of no particular merit has been put in a pseudo-anechoic room (anechoic walls and ceiling, ordinary ground). The piano was tuned normally but its strings were muted by strips of foam inserted between them or by woven in two or three places. Two configurations –  $\{\text{loudspeaker}, \text{room}\}$  and  $\{\text{loudspeaker}, \text{piano}, \text{room}\}$  – have been analysed with the following procedure. The electrical excitation of the loudspeaker was a logarithmic swept-sine [50-4000] Hz with a 40 kHz sampling frequency and a  $T = 26$  s duration. The amplitude of the loudspeaker was set at the beginning of the study in order to obtain displacements of the soundboard corresponding to the *ff* playing:  $\approx 10^{-6}$  m at  $\approx 370$  Hz in this case.

In the first configuration  $\{\text{loudspeaker}, \text{room}\}$ , the response of the room is measured with a microphone (prepolarised pressure-field 1/2" – Brüel & Kjør 4947) placed in front of the loudspeaker (Bose – 802 Series II). The spectrogram of the complete pressure response of the room (without the piano) is shown in Fig. 1. Some distortion is clearly visible which may safely be attributed to the loudspeaker rather than to the microphone. The spectra of the linear and nonlinear impulse responses separated with the method exposed above are shown in Fig. 2. By convention, the non-linear response of order  $n$  as displayed at frequency  $f$  in these spectra, is the response to a sinusoid at  $f$ , measured at frequency  $nf$  in a Fourier transform of the response. In other words, what is common to points belonging to different curves with the same abscissa is the frequency of the excitation signal. Except below 500 Hz where the distortion of the loudspeaker is large, the nonlinear response level is about 50-60 dB lower than the linear contribution.

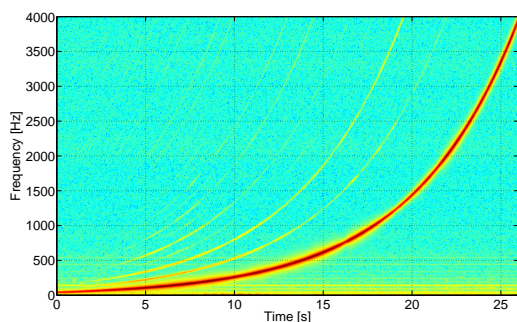


Figure 1: Spectrogram of the acoustical response of the *loudspeaker, room* system to an electrical signal. The distortion appears as successive harmonics of the swept-sine. The spectrogram is calculated with FFT over overlapping windows of 0.1 s with an 50% overlap.

In the second configuration  $\{\text{loudspeaker}, \text{piano}, \text{room}\}$ , the motion of the soundboard was measured with an accelerometer (Brüel & Kjør 4393) put mid-way between two adjacent ribs, at  $\approx 10$  cm from the bridge, close to the F#4 strings (fundamental frequency of  $\approx 370$  Hz). The spectra of the linear and nonlinear contributions to the response in each configuration (with and

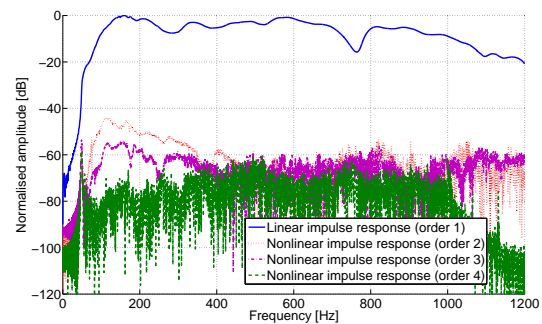


Figure 2: Spectra of the linear and the nonlinear responses shown in Fig. 1. Except below 500 Hz, the nonlinear part of the response is  $\approx 50$ -60 dB less than the linear part.

without the piano) are shown in Fig. 3. The distortion level appears to be approximately the same in both configurations. This shows that the soundboard intrinsic nonlinearity (distorsion rate) is of the order of -60 dB.

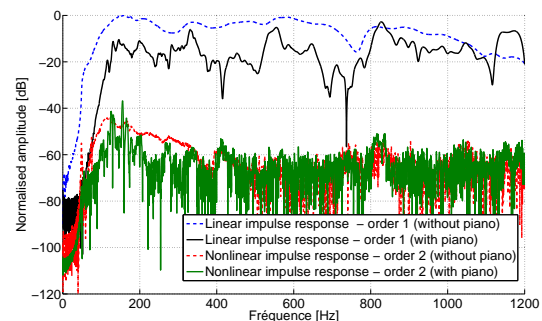


Figure 3: Nonlinearities of the two systems  $\{\text{loudspeaker}, \text{room}\}$  and  $\{\text{loudspeaker}, \text{piano}, \text{room}\}$ . The distortion rate is comparable in both situations.

To conclude this preliminary study, it appears that a linear model is sufficient to predict the vibratory behaviour of a piano soundboard in playing situations, within the precision of customary measurements. Given this essentially linear character of the response, modal identifications of the soundboard have been performed. When a loudspeaker was used to excite the piano, the excitation level was comparable to the one used in this linearity study and the linear contribution was extracted. The ordinary impulse excitation does not permit to separate the linear and nonlinear contributions. Nevertheless, in the light of the results presented above, and considering the small amplitudes of displacement caused by the impacts on the tables (typically less than  $8 \cdot 10^{-6}$  m, mostly due to a very low-frequency displacement and still less than 1/100 of the board thickness) we consider the linear approximation is also verified.

## MODAL IDENTIFICATION BY A HIGH-RESOLUTION METHOD

### The method

The modal behaviour of the upright soundboard is investigated by means of a recently published high-resolution modal analysis technique (Ege et al. 2009) which avoids the frequency-resolution limitations of the Fourier transform. This new technique is particularly well suited for structures made of moderately damped materials such as spruce, and at frequencies where the modal overlap is high (more than 30%). Based on the ESPRIT algorithm (Roy and Kailath 1989), it assumes that

the signal is a sum of complex exponentials and white noise; it projects the signal onto two subspaces: the subspace spanned by the sinusoids (signal subspace) and its supplementary (noise subspace). Rotational invariance property of the signal subspace is used to estimate the modal parameters (frequencies, damping factors and complex amplitudes). The dimensions of both subspaces must be chosen *a priori* and the quality of the estimation depends on a proper choice for these parameters. The best choice for the dimension of the modal subspace is the number of complex exponentials actually present in the signal. This number, called  $\tilde{K}$ , is twice the number of decaying sinusoids. It is therefore advisable to estimate this number prior to the analysis. This is done by means of the ESTER technique (Badeau et al. 2006), recently developed: it consists in minimising the error on the rotational invariance property of the signal subspace spanned by the sinusoids. The block diagram of the method given in Figure 4 describes the three main steps of the method: (a) reconstruction of the acceleration impulse response (b) signal conditioning (c) order detection and determination of modal parameters.

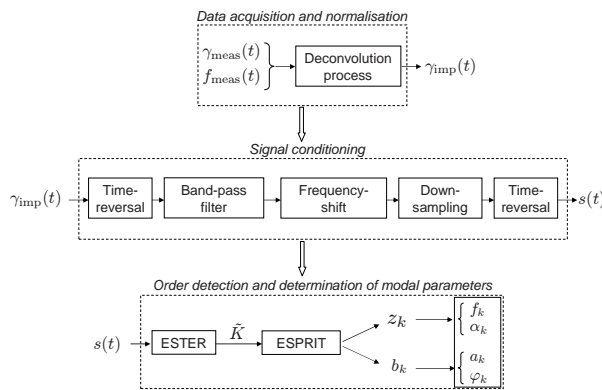


Figure 4: Block diagram of the high-resolution modal analysis method (after (Ege et al. 2009))

## Impulse excitation

The experimental study presented here aims at estimating the modal parameters (modal frequencies, modal dampings and modal shapes) of the upright piano soundboard in the [0-500] Hz frequency range. The piano was put in a pseudo-anechoic room and excited with an impact hammer (Kistler – type 9722A) at the nodes of a rectangular mesh of  $12 \times 10$  points regularly spaced (Figure 5). The motion of the board is measured at five points with accelerometers (two B&K 2250A-10 and three B&K 4393) located in different zones of the board (Figure 5).

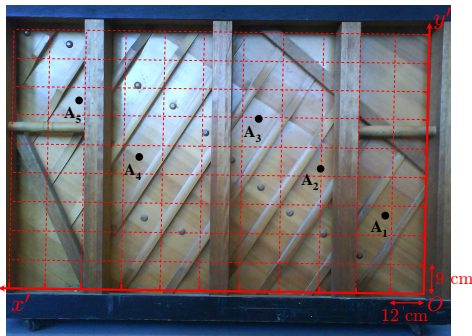


Figure 5: Rear view of the upright piano, with the mesh for modal analysis (in red) and the locations of the five accelerometers (in black).

For each of the  $120 \times 5$  measures, the impulse response is recon-

structed and analysed with the high-resolution modal analysis method. Results are summarised in Figure 6. In order to measure the damping with some precision, it proved necessary to band-filter the impulse responses prior to analysis, as shown by the comparison between (a) and (b) of Fig. 6 and as illustrated by Fig. 7.

Except for the first four low-frequency resonances – for which the rim probably adds non-negligible losses to the distributed ones – modal dampings are very close of the loss factors of the spruce (about 1-3%). The average modal spacing (inverse of the modal density) is about 22 Hz for these 21 lowest modes, in agreement with comparable low-frequency studies ( $\approx 24.8$  Hz for a similar upright piano (Dérogis 1997),  $\approx 22.3$  Hz for a baby grand one (Suzuki 1986)). Above 550 Hz no cloud of points is clearly identifiable in Fig. 6(a) owing to a too-high Signal-to-Noise Ratio ( $\approx 35$  dB). Note that the modal overlap  $\mu^1$  is around 30% at 150 Hz and reaches 70% at 550 Hz.

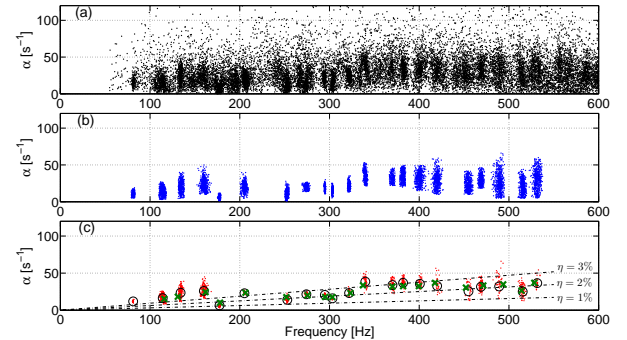


Figure 6: High-resolution modal analysis for the [0-600] Hz frequency-band (*impulse excitation*). Modal frequencies/damping factors map. (a) first rough analysis. (b) After narrow band-pass filtering. (c) After suppression of the (low-precision) estimations in nodal regions.  $\circ$  : retained modal parameters.  $\times$  : weighted mean of the modal parameters estimated at four points of the soundboard (*acoustical excitation*, see following section).  $-\cdot-$  : constant loss factors ( $\eta = 1$  to 3 %).

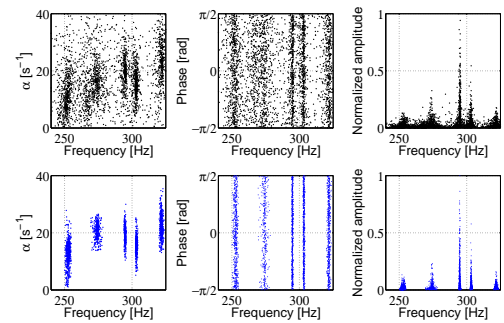


Figure 7: Necessity of the narrow band-pass filtering step. Results for five modes in the [230-330] Hz frequency-band before filtering (top diagrams), after filtering (bottom diagrams).

## Acoustical excitation

In order to improve the SNR and thus extend the estimation of the modal parameters towards higher frequencies (higher modal overlap, in fact), we have replaced the impulsive mechanical excitation by a continuous acoustical one (Fig. 8).

The excitation of the loudspeaker is the same as in section 1 (a

<sup>1</sup>The modal overlap is the ratio between the half-power modal bandwidth and the average modal spacing.

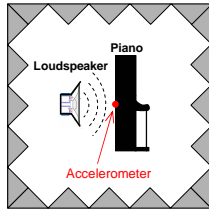


Figure 8: Acoustical excitation of the piano placed in a pseudo-anechoic room. The acceleration of the board is measured at four points.

logarithmic swept-sine [50–4000] Hz with a 40 kHz sampling frequency and a  $T = 26$  s duration). The impulse response of the board is reconstructed by the deconvolution technique and analysed with a filter bank (a typical bank filtering analysis is displayed in Fig. 9 between 550 and 1150 Hz). The cutoff frequencies of the finite-impulse-response (FIR) filters were chosen at local minima of the Fourier spectrum of the response. If necessary, when there is a doubt on the number of components in one frequency-band, two successive filters were occasionally chosen to overlap.

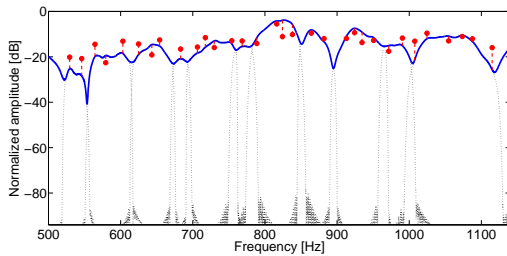


Figure 9: Typical bank-filtering analysis of a reconstructed impulse response between 550 et 1150 Hz (acoustical excitation). —: Fourier spectrum of the impulse response at point  $A_2$ . •: modes estimated by ESPRIT (modal amplitudes and frequencies). ···: amplitude responses of the narrow pass-band filters.

The modal damping factors as identified up to 3 kHz are reported in Fig. 10, together with available bibliographical results (limited to  $\approx 500$  Hz). The advantage of the acoustical excitation technique in terms of frequency spanning is obvious.

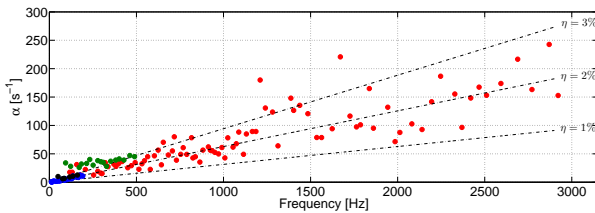


Figure 10: (•): Modal damping factors estimated at point  $A_2$  up to 3 kHz. Comparison with bibliographical results: • (Suzuki 1986); • (Dérogis 1997); • (Berthaut et al. 2003).

Up to around 1200 Hz, loss factors range from 1% to 3% (mean of  $\eta \approx 2.3\%$  for the 55 estimations, lowest in frequency). Between 1200 and 1500 Hz, damping increases from a mean value of  $\approx 80$  s $^{-1}$  below 1200 Hz to  $\approx 130$  s $^{-1}$  in this domain. This increase can be attributed to the acoustical radiation of the structure since this frequency-band is the *critical domain* of the soundboard where modes radiate most efficiently. It is interesting to note that these results (obtained on an upright piano) coincide with the ones obtained by Suzuki (Suzuki 1986) on a

small grand of which he estimated the critical domain around 1400 Hz. Above 1.8 kHz the loss factors are of the order of the internal losses of spruce and influence of radiation is no more visible. A reason for this may be the alteration of the acoustical coincidence phenomenon at those high-frequencies, due to the localisation of the waves between the ribs (see last section).

## Modal density

The modal density  $n$  is a global descriptor of the vibratory behaviour of the structure in the mid- and high-frequency domain. It is given as a function of frequency in Fig. 11 at four points of measurements (see Fig. 5 for the exact locations), as derived from an estimation of the modal spacing (moving average, six successive modes retained for each estimation). The frequency evolution of  $n$  reveals two well-separated vibratory regimes of the structure.

- Below 1.1 kHz, the 4 experimental curves are almost similar.  $n(f)$  raises slowly and tends to a constant value of  $\approx 0.05$  modes Hz $^{-1}$  independently of the zones of the board where the measure is done. **The ribbed board behaves as a homogeneous isotropic plate** (see next section). The slow rise confirms moreover that the boundary conditions are *constraint*.
- For frequencies above 1.1 kHz,  $n(f)$  decreases significantly. Ribs confine the wave propagation: **the soundboard behaves as a set of waveguides** (see last section).

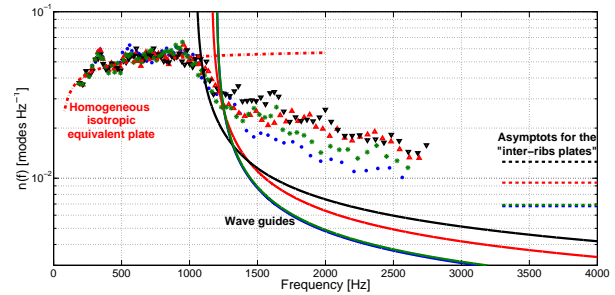


Figure 11: Modal densities of the board measured at points  $A_1$  (•),  $A_2$  (Δ),  $A_3$  (∇),  $A_5$  (\*) and calculated for the first waveguide mode (1,  $n$ ) of the corresponding inter-rib space (—, with the corresponding color). Asymptotic values of the modal densities of the inter-rib plates (---, with the corresponding color). Theoretical modal density of the homogeneous isotropic equivalent clamped plate (---), see next section.

## MODELLING THE LOW-FREQUENCY BEHAVIOUR: A THIN HOMOGENEOUS PLATE IN AN ISOTROPIC EQUIVALENT MATERIAL

### A simple finite-element model

The modal density of the soundboard below 1.1 kHz suggests that a homogeneous isotropic plate represents a good model in this frequency domain. In order to confirm this numerically, we realised a two-dimensional finite-element model (FEM) of the soundboard by means of the free software CAST3M (triangular elements of 2 cm). The ribbed zone was replaced by an isotropic plate with a dynamical rigidity equal to the one of the orthotropic spruce plate in the direction of the grain:

$$D^H / (\rho^H h^H) = D_x^p / (\rho^p h^p) = 156 \text{ m}^4 \text{ s}^{-2} \quad (3)$$

where the constants of rigidity are generically  $D = Eh^3 / (12(1 - \nu^2))$ , with the Young's modulus  $E$  and the Poisson's ratio  $\nu$ . The plate density and thickness are  $\rho$  and  $h$  respectively. The superscript  $p$  refers to the unribbed orthotropic spruce plate and



<sup>H</sup> refers to the homogeneous equivalent isotropic plate. The  $x$ -axis corresponds to the direction of the grain of the wood, orthogonal to the ribs (see Fig. 5). In the numerical model, the two *dead zones* in the upper right and bottom left corners of the soundboard are modelled as orthotropic spruce plates with a constant thickness of 8 mm. The two bars delimiting these two zones are made of fir. The mechanical characteristics used in the numerical model for spruce and fir are summarised in Table 1, as derived from measurements made by Berthaut (Berthaut 2004) on spruce and fir species selected for piano soundboards.

	$E_L$	$E_R$	$G_{LR}$	$\nu_{LR}$	$\rho$ [kg m <sup>-3</sup> ]
Spruce	11.5	0.47	0.5	0.005	392
Fir	8.86	0.54	1.6	0.005	691

Table 1: Mechanical characteristics of spruce and fir species selected for piano soundboard, after (Berthaut 2004). The longitudinal and radial Young's moduli ( $E_L$  and  $E_R$ ) and shear modulus ( $G_{LR}$ ) are given in GPa.

## Results

The numerical solution of the eigenvalue problem is obtained in the conservative case and for *clamped* boundary conditions. The numerical average modal spacings is presented in Fig. 12 together with the experimental estimations. The theoretical average modal spacing of an isotropic clamped plate is also included. Numerical results match well the experimental estimations in the frequency domain of interest. Moreover the first numerical modal shapes for the isotropic plate – presented in Fig. 13 – are remarkably similar to those obtained experimentally, whereas the one obtains with a numerical model of the ribbed board *without bridges* are *less similar*. This confirms that on a typical piano soundboard, the ribs and the bridges compensate globally the anisotropy of spruce.

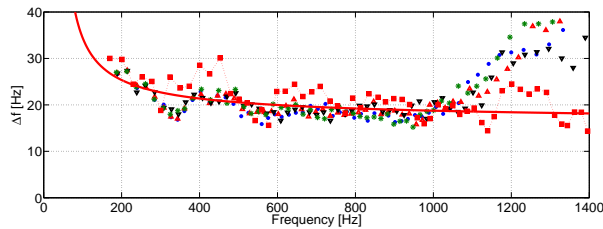


Figure 12: Average modal spacing of the piano soundboard: measured at points  $A_1$  ( $\bullet$ ),  $A_2$  ( $\Delta$ ),  $A_3$  ( $\nabla$ ),  $A_5$  ( $*$ ), numerically calculated with a finite-element model of a homogeneous isotropic clamped plate ( $\blacksquare$ ) and theoretical for the same plate ( $\text{---}$ ).

To conclude this section, we reproduce on figure 14 the relation of dispersion of flexural waves in the isotropic plate. The coincidence frequency (for which the dispersion curve in the plate intersects the one in air) is  $\approx 1500$  Hz which is consistent with previous experimental conclusions. However, the half-wavelength  $\lambda/2$  in the plate become equal or less to the average distance  $p$  between two consecutive ribs ( $\approx 13$  cm) at  $\approx 1160$  Hz so that beyond this frequency, the structure cannot be modelled as a homogeneous plate any more (see next section).

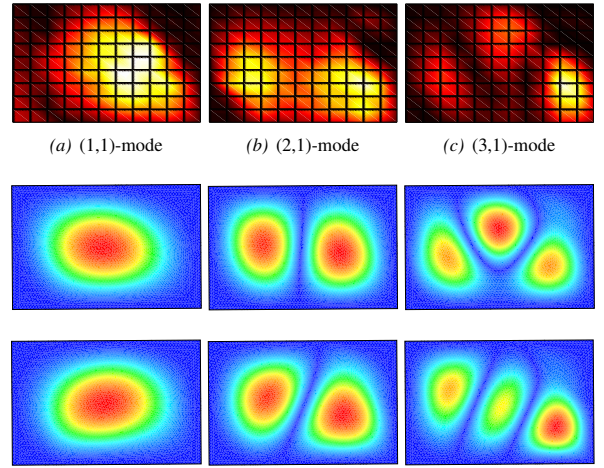


Figure 13: First three modal shapes of the upright piano soundboard: measured (first line), numerical (FEM) after replacement of the ribbed zone by a homogeneous isotropic equivalent plate (middle line), numerical (FEM) for the ribbed board without bridges (bottom line).

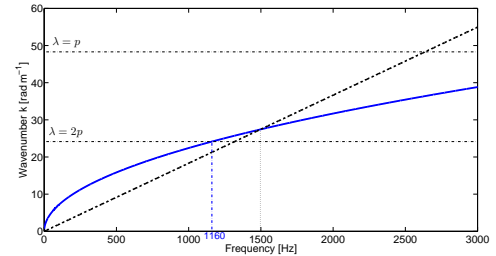


Figure 14: Dispersion curves in the isotropic plate ( $\text{---}$ ), and in air ( $\text{-- --}$ ). The critical frequency of radiation of the plate is  $\approx 1500$  Hz. At  $\approx 1160$  Hz, the half-wavelength  $\lambda/2$  is equal to the average distance  $p$  between two consecutive ribs.

## MODELLING THE MID- AND HIGH-FREQUENCY BEHAVIOUR: SET OF WAVEGUIDES AND MODIFIED COINCIDENCE PHENOMENON

### Numerical observations

For frequencies above 1.1 kHz,  $n(f)$  falls significantly. At 1.1 kHz, the transverse waves in a soundboard without ribs would have a half-wavelength equal to the average distance  $p$  between two consecutive ribs. Berthaut *et al.* (Berthaut 2004) made the observation that ribs confine the wave propagation. This is confirmed here by numerical simulations. Modal shapes obtained through the finite-element model of the ribbed board (Fig. 15) exhibit a localisation of the waves for frequencies above 1.1 kHz. The soundboard behaves as a set of waveguides.

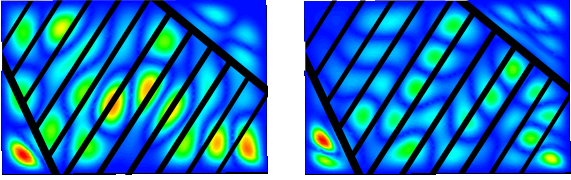
### The waveguide model

We adopt the simplest possible waveguide model (Fig. 16) in order to derive a dispersion law of this non-homogeneous plate and to calculate its modal density.

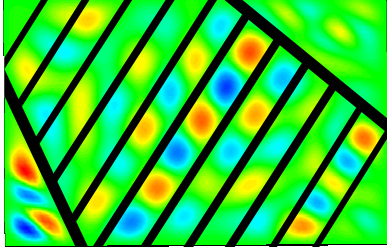
The hypotheses are :

- The inter-rib region behaves like an orthotropic plate with clamped boundaries.
- Wavenumbers  $k_{x_m}$  in the direction  $x$  normal to the ribs<sup>2</sup>

<sup>2</sup>The direction  $x$  is parallel to the grain of the spruce board and, by construction, perpendicular to the ribs (see figure 5).



(a) 32<sup>nd</sup> numerical modal shape,  $f_n = 776$  Hz  
(b) 48<sup>th</sup> numerical modal shape,  $f_n = 1089$  Hz



(c) 74<sup>th</sup> numerical modal shape,  $f_n = 1593$  Hz

Figure 15: Modal shapes obtained by a FEM of the ribbed board. The positions of the ribs and of the two bars are indicated in black. At 1593 Hz, the antinodes of vibration are localised between the ribs (nodes of vibration). This behaviour is already visible for the modal shapes at 1089 Hz, but not at 776 Hz. In (c), the sign of the phase is represented: red and blue zones denote regions vibrating with opposite phases.

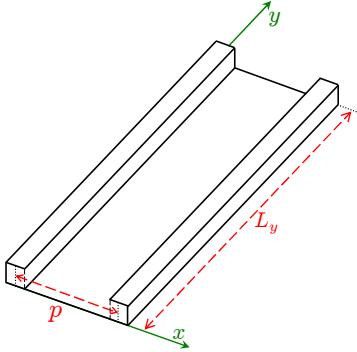


Figure 16: The board between two consecutive ribs can be considered in the high-frequency range as a *finite* waveguide.

are imposed by the inter-rib distance  $p$ :  $k_{x_m} = m\pi/p$  with  $m \in \mathbb{N}^*$ .

- Wavenumbers  $k_{y_n}$  in the direction  $y$  parallel to the ribs are imposed by the boundary conditions at rim.

According to the first hypothesis, the dispersion law is:

$$k_y^4 + k_y^2 \frac{D_2 + D_4}{D_3} k_{x_m}^2 + \frac{D_1}{D_3} k_{x_m}^4 - \frac{\rho h \omega^2}{D_3} = 0 \quad (4)$$

where the  $D_i$  are the constants of rigidity of spruce, considered as an orthotropic material (of main axes  $x$  and  $y$ ):

$$D_1 = E_x h^3 / (12(1 - \nu_{xy} \nu_{yx})), D_2 = \nu_{yx} E_x h^3 / (6(1 - \nu_{xy} \nu_{yx})), \\ D_3 = E_y h^3 / (12(1 - \nu_{xy} \nu_{yx})) \text{ and } D_4 = G_{xy} h^3 / 3.$$

With  $A = \frac{D_2 + D_4}{D_3} k_{x_m}^2$ ,  $B = \frac{D_1}{D_3} k_{x_m}^4$  and  $C = \frac{\rho h}{D_3}$ , the equation 4

becomes a second order equation in  $k_y^2$ :  $k_y^4 + A k_y^2 + B - C \omega^2 = 0$ . Finally the dispersion law in each waveguide is:

$$k_y = \pm \left( \frac{\sqrt{A^2 + 4C\omega^2 - 4B} - A}{2} \right)^{1/2} \quad (5)$$

The pulsation  $\omega_{c,p,m} = \sqrt{B/C} = \left( \frac{m\pi}{p} \right)^2 \sqrt{\frac{D_1}{\rho h}}$  is a low cutoff pulsation for the transverse modes  $m$  in ribs separated by  $p$ . Below this pulsation, there is no real solution and waves are evanescent in the  $y$  direction.

For a given  $k_{x_m}$ , the modal density in the wave guide can be calculated as follows. The wavenumbers  $k_{y_n}$  are approximated by  $n\pi/L_y$  with  $n \in \mathbb{N}^*$ . The number of modes of pulsation less than  $\omega$  is  $N(\omega) = k_y(\omega)L_y/\pi$  and the modal density:

$$n(\omega) = \frac{dN}{dk_y} \frac{dk_y}{d\omega} = \frac{L_y}{\pi} \frac{\sqrt{2}C\omega}{\sqrt{A^2 + 4C\omega^2 - 4B} \left( \sqrt{A^2 + 4C\omega^2 - 4B} - A \right)^{1/2}} \quad (6)$$

In the high-frequency limit, the waveguide has the same modal density as that of a beam of length  $L_y$ , with a  $\omega^{-1/2}$  dependency:

$$n(\omega) \xrightarrow{\omega \rightarrow +\infty} \frac{L_y}{\pi} \frac{C^{1/4}}{2\sqrt{\omega}} = \frac{L_y}{2\pi\sqrt{\omega}} \left( \frac{\rho h}{D_3} \right)^{1/4} \quad (7)$$

The modal density of waveguides with different values of  $p$  and  $L_y$  are reported in Fig. 11.

### The modified acoustical coincidence

The acoustical coincidence phenomenon is deeply modified in comparison with the one occurring in a thin plate (see figure 17). The dispersion curve of a waveguide can present one, two, or no coincidence frequencies depending on the value of  $p$ . This creates a nonuniformity in the radiation of the soundboard in the treble range of the instrument compared to the lower range and this may explain the difference in timbre. For example, for the key  $\mathbf{D}\#_6$  having a fundamental frequency around 1245 Hz, the damping factor due to the acoustical radiation of the fundamental may be higher (supersonic waves) than the damping factors of the next two partials (subsonic waves).

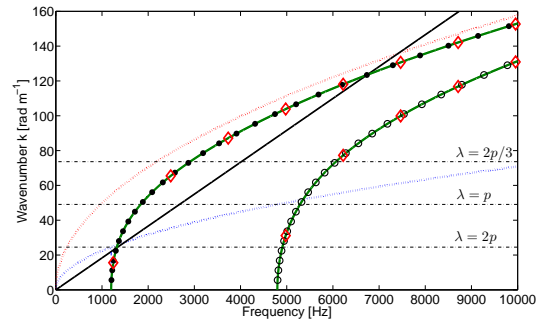


Figure 17: Relations of dispersion for flexural waves in the orthotropic plate ( $\bullet\bullet$  along  $x$  and  $\circ\circ$  along  $y$ ), in the air (—) and for the two first waveguide modes (— and --) of the waveguide between the second and third ribs. We add the discrete values corresponding to the waveguide modes  $(1, n)$  in  $\bullet$  and  $(2, n)$  in  $\circ$ , together with the supposed perfectly harmonic partials of the  $\mathbf{D}\#_6$  strings in  $\diamond$ .

### CONCLUSION

We have investigated the vibrations of the soundboard of an upright piano in playing condition. At normal levels of vibration, the linear part of the mechanical response to an acoustical response is  $\approx 50$ – $60$  dB above the nonlinear component. Given

the essentially linear response, a modal identification was performed in the mid-frequency domain [300-2500] Hz by means of a novel high-resolution modal analysis technique: the modal density and the loss factor could be measured up to 2.5–3 kHz. The frequency evolution of the modal density of the piano soundboard reveals two well-separated vibratory regimes of the structure. Below 1.1 kHz, the modal density is very close to that of a homogeneous isotropic plate with clamped boundary conditions. Higher in frequency, the soundboard behaves as a set of waveguides defined by the ribs. A numerical (FEM) determination of the modal shapes confirms that the waves are localised between the ribs. The measured modal density is consistent with an estimation based on the dispersion law of waves in each waveguide. The acoustical coincidence phenomenon is deeply modified in comparison with that occurring in thin plates. The dispersion curve of a waveguide can present one, two, or no coincidence frequencies. This creates a nonuniformity in the radiation of the soundboard in the treble range of the instrument compared to the lower range and this may explain the difference in timbre.

Finally, we would like to notify the reader that the measurements presented in this paper have been used to give a synthetic description of the piano soundboard mechanical mobility (admittance): see the ISMA companion-paper (Ege and Boutillon 2010)).

## REFERENCES

- A. Askenfelt and E. V. Jansson. On vibration sensation and finger touch in stringed instrument playing. *Music Perception*, 9(3):311–349, 1992.
- R. Badeau, B. David, and G. Richard. A new perturbation analysis for signal enumeration in rotational invariance techniques. *IEEE Transactions on Signal Processing*, 54(2):450–458, 2006.
- J. Berthaut. *Contribution à l'identification large bande des structures anisotropes. Application aux tables d'harmonie des pianos*. PhD Thesis, École Centrale de Lyon, 2004.
- J. Berthaut, M. N. Ichchou, and L. Jezequel. Piano soundboard: structural behavior, numerical and experimental study in the modal range. *Applied Acoustics*, 64(11):1113–1136, 2003.
- P. Dérogis. *Analyse des vibrations et du rayonnement de la table d'harmonie d'un piano droit et conception d'un système de reproduction du champ acoustique*. PhD Thesis, Université du Maine, Le Mans, 1997.
- K. Ege and X. Boutillon. Synthetic description of the piano soundboard mechanical mobility. In *20th International Symposium on Music Acoustics*, Sydney and Katoomba, Australia, 2010.
- K. Ege, X. Boutillon, and B. David. High-resolution modal analysis. *Journal of Sound and Vibration*, 325(4-5):852–869, 2009.
- A. Farina. Simultaneous measurement of impulse response and distortion with a swept-sine technique. In *108th Convention of the Audio Engineering Society*, Paris, France, 2000.
- R. Roy and T. Kailath. ESPRIT - estimation of signal parameters via rotational invariance techniques. *IEEE Transactions on Acoustics Speech and Signal Processing*, 37(7):984–995, 1989.
- M. Rébillat, R. Hennequin, E. Corteel, and B. F. G. Katz. Identification of cascade of hammerstein models for the description of non-linearities in vibrating devices. *Submitted to the Journal of Sound and Vibration*, 2010.
- H. Suzuki. Vibration and sound radiation of a piano soundboard. *Journal of the Acoustical Society of America*, 80(6):1573–1582, 1986.
- C. Touzé, O. Thomas, and A. Chaigne. Asymmetric non-linear

forced vibrations of free-edge circular plates. Part 1: Theory. *Journal of Sound and Vibration*, 258(4):649–676, 2002.