



**HAL**  
open science

## EEG-correlated fMRI and Post-Operative Outcome in Focal Epilepsy

Rachel Thornton, Helmut Laufs, Serge Vulliemoz, David W Carmichael, Sajitha Cannadathu, Afraim Salek-Haddadi, Roman Rodionov, Andrew W Mcevoy, Shelagh Smith, Robert Elwes, et al.

► **To cite this version:**

Rachel Thornton, Helmut Laufs, Serge Vulliemoz, David W Carmichael, Sajitha Cannadathu, et al.. EEG-correlated fMRI and Post-Operative Outcome in Focal Epilepsy. *Journal of Neurology, Neurosurgery and Psychiatry*, 2010, 81 (8), pp.922. 10.1136/jnnp.2009.196253 . hal-00557429

**HAL Id: hal-00557429**

**<https://hal.science/hal-00557429>**

Submitted on 19 Jan 2011

**HAL** is a multi-disciplinary open access archive for the deposit and dissemination of scientific research documents, whether they are published or not. The documents may come from teaching and research institutions in France or abroad, or from public or private research centers.

L'archive ouverte pluridisciplinaire **HAL**, est destinée au dépôt et à la diffusion de documents scientifiques de niveau recherche, publiés ou non, émanant des établissements d'enseignement et de recherche français ou étrangers, des laboratoires publics ou privés.

**EEG-correlated fMRI and Post-operative Outcome in Focal Epilepsy**

Rachel Thornton, Helmut Laufs<sup>\*</sup>, Roman Rodionov, Sajitha Cannadathu, David W Carmichael, Serge Vulliemoz, Afraim Salek-Haddadi, Andrew W McEvoy, Shelagh M Smith, <sup>2</sup>Samden Lhatoo, <sup>3</sup>Robert D C Elwes, <sup>4</sup>Maxime Guye, Matthew C Walker, Louis Lemieux, John S Duncan

**National Society for Epilepsy MRI Unit, Chalfont St Peter, Buckinghamshire, SL9 0RJ and**

**Department of Clinical and Experimental Epilepsy, UCL Institute of Neurology, Queen Square, London, WC1N 3BG, UK**

**National Hospital for Neurology and Neurosurgery, UCL Hospitals NHS Trust, London, WC1N 3BG, UK**

<sup>2</sup>**Department of Neurology, North Bristol NHS Trust, Frenchay Hospital, Frenchay Road, Bristol, UK**

<sup>3</sup>**Department of Neurophysiology, Kings College Hospital, Denmark Hill, London, UK**

<sup>\*</sup>**current address: Department of Neurology and Brain Imaging Center, Johann Wolfgang Goethe-University, Frankfurt am Main, Germany**

<sup>4</sup>**Centre de Résonance Magnétique Biologique et Médicale (CRMBM), UMR CNRS 6612 & Service de Neurophysiologie Clinique, INSERM U 751, CHU Timone, AP-HM, Faculté de Médecine de Marseille, Université de la Méditerranée, 27 Bd Jean Moulin, 13005 Marseille**

**Word Count (Abstract): 249**

**Word Count (Body of Text): 3011**

**Keywords:** EEG; EPILEPSY; EPILEPSY, SURGERY; FUNCTIONAL IMAGING

**Disclosure:** The Authors report no conflict of interest.

**Abstract**

*Background:* The main challenge in assessing patients with epilepsy for resective surgery is localising seizure onset. Frequently, identification of the irritative and seizure onset zones requires invasive EEG. EEG-correlated fMRI (EEG-fMRI) is a novel imaging technique which may provide localising information with regard to these regions. In patients with focal epilepsy, interictal epileptiform discharges (IED) correlated BOLD (blood oxygen dependent level) signal changes are observed in approximately 50% of patients in whom IEDs were recorded. In 70% these are concordant with expected seizure onset defined by non-invasive electroclinical information. Assessment of clinical validity requires post-surgical outcome studies which have, to date, been limited to case reports of correlation with intracranial EEG. We assessed the value of EEG- fMRI in patients with focal epilepsy who subsequently underwent epilepsy surgery and related IED- correlated fMRI signal changes to the resection area and clinical outcome

*Methods:* We recorded simultaneous EEG-fMRI in 76 patients undergoing presurgical evaluation and compared the locations of IED-correlated pre-operative BOLD signal change with the resected area and post-operative outcome.

*Results :* 21 patients had activations with epileptic activity on EEG fMRI and 10 underwent surgical resection. 7/10 patients are seizure free following surgery and the area of maximal BOLD signal change was concordant with resection in 6/7. In the remaining 3, with reduced seizure frequency post-surgically, areas of significant IED correlated BOLD signal change lay outside the resection. 42/55 patients who had no IED related activation underwent resection.

*Conclusion:* These results show potential value for EEG-fMRI in pre-surgical evaluation.

## INTRODUCTION

In refractory focal epilepsy, surgical resection has the best chance of a good outcome if seizure onset is identified and remote from eloquent cortex<sup>1</sup>. The challenge of pre-surgical evaluation rests in accurate delineation of these regions. High-quality structural MRI has increased the identification of underlying pathology in epilepsy, but successful resective surgery is increasingly possible in the absence of MRI abnormalities<sup>2,3</sup>, and the epileptogenic zone may extend beyond the margin of abnormal tissue where pathology is seen<sup>1</sup>. Standard non-invasive investigations can fail to localise seizure onset and invasive EEG recording is often necessary, which is expensive and has associated morbidity<sup>4</sup>. Intracranial recording requires careful patient selection and 70- 90% of such patients will subsequently be offered surgical resection<sup>5</sup>. There is a pressing need therefore, for non-invasive techniques to identify these regions and assist in the planning of invasive recordings.

FDG PET (fluorodeoxyglucose positron emission tomography) and ictal-interictal SPECT (single photon emission computed tomography) are helpful, but lack the spatial resolution of MRI. Neurophysiological approaches (high density EEG, and magneto encephalography (MEG)) have shown concordance with intracranial recordings and postoperative outcome; i.e. have some positive predictive value<sup>6,7</sup>, but despite excellent temporal resolution, are limited by the accuracy of source localisation.

EEG-correlated fMRI (EEG-fMRI), whereby EEG and fMRI are acquired simultaneously, reveals regions of blood oxygen level-dependent (BOLD) signal changes associated with inter-ictal (IED) and ictal epileptiform discharges which may provide information about the epileptic network. The methodology combines the spatial resolution of MRI with the temporal resolution of EEG and applying EEG-fMRI to pre-surgical evaluation has been an important motivation for the technique's development<sup>8-12</sup>.

To date, clinical validation of EEG-fMRI has consisted of studies comparing IED-correlated BOLD signal change with invasive and non-invasive methods of localising the seizure onset zone<sup>13 11;12, 9 14;15</sup> reporting up to 70% concordance (co-localisation of areas of maximal positive BOLD signal activation and presumed seizure onset at a lobar level) between IED BOLD activations and electro-clinical seizure onset in patients with focal epilepsy.

Comparison of novel localisation techniques in focal epilepsy with intracranial EEG, the current gold standard, is considered the best method for validation<sup>16</sup>, but the approach has drawbacks. Intracranial EEG records directly from regions of interest, but has reduced spatial coverage owing to the limited number of electrodes which can be implanted. The problem of source reconstruction found in scalp EEG is not abolished as many regions of interest cannot be accurately sampled using current methods. Nevertheless, it remains one of the best methods of identifying the likely irritative and epileptogenic zones before resection. In EEG fMRI research, concordance of activations with the irritative zone recorded during invasive monitoring have been reported in small groups, an important step in establishing the technique's clinical utility<sup>12;14;17</sup>. One group specifically addressed the use of EEG-fMRI in surgical planning<sup>18</sup>, carrying out studies in a group of 29 patients previously rejected for surgery with frequent IEDs. They reported useful EEG-fMRI results in 6 patients, 4 of whom proceeded to surgical resection and suggested that EEG-fMRI may contribute to the surgical decision making process when standard methods did not identify a surgical target<sup>18</sup>.

Here we compared EEG-fMRI results in a group of patients undergoing surgery with post-operative outcome, assessing whether resection of a region exhibiting IED-correlated BOLD activation was associated with post-operative seizure freedom.

## **METHODS**

### **Patients**

76 consecutive patients with refractory focal epilepsy undergoing pre-surgical evaluation with IEDs recorded during video telemetry underwent EEG-fMRI between December 2005 and May 2008. The EEG-fMRI results did not form any part of the surgical decision making process, and were undertaken independently from other investigations without any reduction in medication.

### **Clinical course**

Patients underwent electro-clinical assessment including video EEG, clinical examination and structural MRI (National Hospital for Neurology and Neurosurgery Epilepsy protocol). The decision regarding electro-clinical localisation and subsequent resection was made by the clinical team and undertaken with curative intent. 6 patients underwent anterior temporal lobe resection, and 4 underwent neocortical resection (2 frontal, 1 parietal, 1 occipital).

The extent of resection, histopathological diagnosis and International League Against Epilepsy (ILAE) outcome<sup>19</sup> were recorded 1 year post-operatively. The ILAE Outcome is measured by a graded scale summarised as follows: 1= Seizure free, 2=Auras only, 3= Seizures on a maximum of 3 days per year, 4= >50% reduction in seizure frequency, 5= ,50% Reduction to 100% increase in seizure frequency, 6= >100% increase in seizure frequency.

### **EEG-fMRI Acquisition**

All patients underwent EEG-fMRI for between 35 and 60 minutes at 1.5 or 3T. Patients lay still in the scanner with their eyes closed and with no instruction regarding vigilance. EEG was recorded continuously during fMRI using MR-compatible systems (Brain Products, Munich, Germany) along with a scanner synchronisation signal and ECG. Sets of 404 T2\*-weighted single-shot gradient-echo echo-planar images (EPI; TE/TR 30/3000 msec at 3T; TE/TR 0.5/3000 msec at 1.5T), flip angle 90: 43 (at 3T) and 21 at 1.5T, interleaved slices (thickness: 3mm at 3T; 5mm at 1.5T), FOV 24x24cm<sup>2</sup>, 64<sup>2</sup>) were acquired continuously on GE MR scanners (GE Medical Systems, Milwaukee). Offline MRI and pulse related artefact were removed from the EEG trace<sup>20;21</sup> and events marked.

### **fMRI processing and analysis:**

The fMRI time-series were realigned, spatially smoothed with a cubic Gaussian Kernel of 8 mm full width at half maximum and analysed using a general linear model (GLM) in SPM5 ([www.fil.ion.ucl.ac.uk/SPM](http://www.fil.ion.ucl.ac.uk/SPM)) to identify IED-related BOLD changes. Separate sets of regressors were formed for each type of IED allowing identification of specific BOLD effects.

Discharges were represented as zero-duration events (unit impulse, or 'delta', functions) convolved with the canonical haemodynamic response function its temporal and dispersion derivatives, resulting in three regressors for each event type<sup>22</sup>. Ictal events were modelled as 3 'blocks' representing earliest electrographic change, clinical seizure onset and post-ictal change on the EEG.

Motion-related effects were included in the GLM as 24 regressors representing 6 scan realignment parameters and a Volterra expansion of these<sup>23</sup>, and Heaviside step functions for large motion effects<sup>24</sup>. Additional regressors were included for pulse-related signal changes<sup>25</sup>.

F-contrasts were used across three regressors corresponding to each event type with a threshold of  $p < 0.05$  corrected for multiple comparisons (family-wise error) considered significant. A T-contrast ( $p < 0.001$  uncorrected for multiple comparison) assessed whether the haemodynamic response function was positive or negative. BOLD responses were considered positive when a positive HRF was plotted for a given cluster. A less stringent significance threshold was used to explore the data ( $p < 0.001$ , uncorrected). EPI data were co-registered to the pre-operative T1-weighted images to create activation map overlays<sup>26</sup>. Clusters of significant BOLD change were labelled anatomically on high resolution EPI images and co-registered with pre-operative structural T1 images.

#### **Post-operative imaging**

Postoperative T1-weighted MRI was acquired and co-registered with the pre-operative images allowing visualisation of fMRI activation maps in relation to the area of resection. Concordance was defined for the cluster of BOLD activation containing the global maximum.

**RESULTS**

76 patients underwent EEG-fMRI recordings. Of 76 patients, 43 had temporal lobe epilepsy, 26 had frontal lobe epilepsy and 7 had posterior epilepsies. 52 (68%) of these have subsequently undergone surgical resection. 34/52 (65%) have reached one year follow up of whom 10 (33%) had significant activation on EEG-fMRI. A further 11 had significant activation on EEG-fMRI, but did not undergo surgery owing to an extensive epileptogenic zone or overlap with motor function (n=5), intra-operative complications (n=1), patient choice (n=1) or awaiting further evaluation (n=4). In 36/52 (69%) patients who were operated and 13/24 (54%) who were not operated, no IEDs were recorded. The mean number of IEDs during the EEG-fMRI studies was 29.3 across all 76 patients (89.3 in those who had any IED). The median number of IEDs in the group who had BOLD activations and underwent resection was 329 (range 22-635).

Clinical data and EEG-fMRI results are summarised in table 1. Two representative cases are presented in figures 1 and 2. The remainder are available in the supplementary web material.





Table 1

	Scanner (Tesla)	Electro-clinical localisation	Semiology	Structural MRI	Pathology	ILAE outcome	EEG fMRI Activation
1	1.5	L mesial TLE	Epigastric aura, Oroalimentary automatisms.	L HS	HS	1	L anterior temporal lobe (FWE p<0.05)
2	1.5	L mesial TLE. L	Epigastric aura, oroalimentary automatisms, L-manual automatisms.	L HS	HS	1	Anterior portion L inferior temporal gyrus (FWE p<0.05)
3	1.5	L TLE.	From sleep. Nauseated, hyperventilation. L-sided manual automatisms.	L HS	HS	1	L anterior temporal lobe (FWE p<0.05)
4	3	R TLE.	Hyperventilation, confusion. Bilateral manual automatisms.	R HS, previous resection	HS	1	R mesial temporal lobe (unc. p<0.0001)
5	3	Non-lateralised TLE . Ictal icEEG: bilateral EZ	Behavioural arrest, fear, right hand dystonia, head turning to R.	L HS	HS	1 *	R and L lateral temporal lobes (FWE p<0.05)
6	3	R TLE	Hyperventilation, loss of awareness, manual automatisms	R HS	HS	1	Ictal: Right mesial temporal (FWE p<0.05) IED: none
7	3	R posterior epilepsy	Visual hallucination, incontinence, loss of awareness	R occipital FCD	FCD grade 2a	4	Ictal: Right medial occipital (FWE p<0.05) IED: none
8	3	L FLE. Ictal icEEG, EZ posterior to FCD. Widespread IZ	>From sleep, unresponsive, but awake. Rapid blinking. R arm posturing. Head turning to R.	L inferior frontal gyrus FCD	FCD grade 2a	4	L pre-central gyrus and superior temporal gyrus ,
9	3	R PLE	Sensory change left foot, clonic movements left t arm and leg	R parietal FCD	FCD grade 2a	1	Ictal: Maximal right parietal, but widespread (FWE p<0.05) No IED
10	3	R FLE	Speech arrest, head version to L, clonic movements L hand and foot	R frontal atrophy	Normal	5	R mesial frontal (pre- motor cortex and R SMA).(FWE p<0.05)

Abbreviations: R = right, L = left, TLE = Temporal lobe epilepsy, FLE = Frontal lobe epilepsy, PLE = Parietal lobe epilepsy, icEEG = intracranial electroencephalogram, HS = hippocampal sclerosis, FCD = focal cortical dysplasia, SMA = supplementary motor area. \*ILAE Outcome 1, no habitual seizures persistent right sided abnormalities on EEG and occasional auras. FWE = Family wise error correction for multiple comparisons.

## DISCUSSION

This series of patients with refractory focal epilepsy demonstrates good correspondence between the localisation of IED-related BOLD changes, the area of resection and seizure outcome, with useful information gleaned in 10/42 patients in whom resections were carried out and the requisite follow up period reached. In six of the seven cases that are seizure free post-operatively, the area of resection included the locus of maximum BOLD signal increase. No IED was captured during EEG-fMRI in case 6 or 9, but the area of maximum ictal-correlated BOLD signal increase lay within the resection margin. In the remaining three patients who continued to have seizures after surgery the areas of maximal BOLD activation did not overlap with the resected area. Although the clinical outcomes in these patients are expected given their diagnoses, these results support the contention that IED and ictal EEG-fMRI BOLD signal change are linked to the seizure onset zone in focal epilepsy. As EEG-fMRI data did not contribute to the surgical decision this gives an unbiased evaluation of a potential role for the technique in pre-surgical evaluation.

### Methodological Considerations

#### 1. EEG fMRI yield and confounding factors

EEG-fMRI relies on the recording of events during the scanning period, a problem shared with both MEG and standard EEG. Events were captured in 40% of the patients in this group, which appears low, but previous studies of EEG-fMRI often exhibit a selection bias, considering only patients with a very active resting EEG<sup>11;12</sup> in contrast to this study. **We observed EEG-fMRI activations in one third of the patients who reached one year follow up, suggesting the technique is less sensitive than existing advanced imaging techniques such as FDG PET (shown in one series to have a diagnostic sensitivity of 44% in patients undergoing surgery for neocortical epilepsy<sup>27</sup>). However EEG fMRI is likely to be of most interest in specific patients who have complex epilepsy syndromes not localised by conventional means, and larger studies in selected patient groups are required to further assess its contribution to pre-surgical evaluation.**

Our approach to fMRI data modelling is designed to ensure that regional BOLD changes explained by confounding factors are not considered as effects of interest, by incorporating these features in the model. We generally use a stringent threshold of  $p < 0.05$  FWE corrected for multiple comparisons, but in one case have reported the uncorrected, but statistically significant result as this is confirmed on intracranial recording. We employ rigid techniques to correct for physiological noise. While the statistical tools used to produce maps of activity are designed to control for rates of false positive findings, lack of significant BOLD activation essentially represents low signal-to-noise ratio (particularly owing to high noise reflecting variance in the baseline) which may be scanner-related or physiological. While conservative measures to correct for physiological noise improve the specificity of the model, smoothing restricts the spatial resolution as do distortions in the EPI data discussed below. **We report the global maximum on each SPM an objective measure of**

the most statistically significant region of BOLD signal change correlated with the events of interest, irrespective of cluster size or proximity to the region of seizure onset.

It seems clear that BOLD increases generally reflect increases in neuronal activity, but in the case of epileptic activity recorded on EEG the relationship is not so clear-cut. Previous reports suggest seizures and IEDs associated with a positive BOLD response<sup>28</sup>. Importantly, lack of activation does not allow any firm inferences to be made on the level of brain activity and in particular lack of regional epileptic activity in this context.

## 2. Limits of an interictal study

Caution is required in extrapolating the results of any interictal investigation to make inferences about the epileptogenic zone, although the development of an interictal method that may contribute to identification of the epileptogenic zone has advantages. It is clear that EEG-fMRI does not image the epileptogenic zone even in the context of ictal recordings, but rather that these results are concordant with seizure onset in straightforward cases and may offer hypotheses for further evaluation in complex cases.

## 3. Comparison of EPI and T1 weighted imaging

Coregistration of T1 images and EPI for the localisation of BOLD signal change is problematic particularly when complicated by changes in brain structure. We addressed this by comparing individualised SPMs of BOLD signal change with each subject's postoperative T1 volume scan, ensuring accurate anatomical localisation of the area of BOLD signal change. Spatial smoothing limits the resolution of EPI, but we found visual comparison adequate to compare activations with the resected region.

## Clinical Significance

Previous studies in focal epilepsy demonstrate regions of IED-related BOLD signal change, often concordant with the seizure onset zone determined by electro-clinical localisation both in temporal and extra-temporal lobe epilepsy and our data support these findings<sup>9,11,12,29</sup>.

Validation of the technique's clinical use must now depend on demonstrating added value and can be achieved by comparing the EEG-fMRI findings with those of intra-cranial EEG. However, successful demonstration of a new localisation technique's capability to predict post-surgical outcome remains the gold standard against which all localisation methods are judged. In this series we demonstrated that resections which completely removed the region in which IED correlated BOLD signal change were generally associated with seizure freedom, while the finding that areas of significant BOLD activation lying outside of the resection was predictive of poorer outcome in this unbiased sample. It can be argued that the outcomes are unsurprising given the diagnoses, especially in patients with hippocampal sclerosis, but this is a test that any new technique must pass. The results presented here, suggest that the clinical utility of EEG-fMRI in pre-surgical

evaluation is likely to be restricted to those patients with focal epilepsy, in whom the ictal onset zone is not identified by conventional non-invasive means and who have frequent IEDs (>10/hour) on interictal EEG.

In case 5, bilateral activations were observed in relation to runs of left temporal IED, while electroclinical evaluation suggested bilateral seizure foci. Despite the lack of seizures post surgically, routine scalp EEG remained very active following resection with frequent runs of IEDs, an independent predictor of poor outcome<sup>7,30</sup>. This lends support to the theory that multiple EEG-fMRI activations may be predictive of poor outcome in surgery<sup>18</sup>. In cases 7, 8 and 10, the most significant activations lay outside the region of resection and the epileptogenic and irritative zones were confirmed to be extensive on intracranial recording, lending further support to this hypothesis. In case 10, there was also rapid propagation of both inter-ictal spikes and seizures from mesial to lateral right frontal lobe on intracranial EEG with a similar distribution to the BOLD signal clusters observed. The temporal resolution of fMRI prevents further evaluation of these clusters using EEG fMRI alone, but simultaneous electric source imaging in inter-ictal EEG fMRI studies demonstrates that widespread or multiple BOLD signal clusters may correspond to the regions of onset and propagation of inter-ictal discharges<sup>34</sup>.

In cases 6 and 9 interpretation is more difficult as ictal activity was recorded during EEG-fMRI. BOLD activations were more widespread, but spatially concordant with seizure onset, similar to previous reports of ictal EEG-fMRI in focal epilepsy<sup>31,32</sup> which suggested that such widespread activations may represent regions of ictal propagation. Although the areas of activation were more widespread than the resected area, it is notable that the area of most significant early ictal correlated positive BOLD signal change was within the resected tissue in both cases.

### Deactivations

This study focused on positive BOLD signal changes, similar to previous investigations which assessed the concordance of BOLD signal change with the ictal onset zone. We observed deactivations remote from the seizure onset zone in 7/10 cases. This work did not focus on BOLD deactivations, which evidence suggests may represent regions functionally connected with the irritative zone reflecting neuronal inhibition<sup>35-37</sup>. Deactivations in these cases were predominantly limited to the contra-lateral hemisphere and the 'default mode network', similar to previous reports of IED associated EEG fMRI, which suggested that such deactivations may represent a sub-clinical suspension of the resting state related to interictal events<sup>36</sup>.

### Non-resected group

In 24 patients resection was not carried out including 11 who had activations on EEG-fMRI. The results are not discussed in detail here, but it is notable that in those patients in whom the seizure onset zone was found to be extensive on intracranial recording, EEG fMRI activations were also generally widespread. It is notable that fewer events were recorded in the group that underwent resection compared to those that did not and in particular a greater proportion of patients who underwent resection had no IEDs compared to those who did not (69% vs. 54% of patients with no IEDs). This reflects the

case mix, in particular the higher proportion of patients in the resected group with mesial temporal lobe epilepsy, in whom fewer IEDs are observed on scalp recordings in general.

### **Further Work**

These results suggest that the EEG-fMRI has potential use as a clinical tool, particularly in the sub-group of patients in whom the EEG is active, but localisation using conventional means is difficult. Further work is required to establish its validity in larger patient groups with specific syndromes, in particular those undergoing intra-cranial recording<sup>18</sup> and also to identify those sub-groups in whom the technique adds most value to existing methods of pre-surgical assessment. Larger studies with longer post-operative follow up periods will add to the evidence base. Improvement in EPI acquisition and co-registration between MRI modalities may be able to extend the usefulness of EEG-fMRI.

### **Conclusion**

Our results suggest that localisation based on EEG-fMRI of interictal and ictal activity may be a useful adjunct to the pre-operative work up of patients in whom surgery for focal epilepsy is being considered, particularly when standard data does not indicate a clear-cut focus and patients have frequent IED on routine EEG. We demonstrate good concordance of IED-correlated BOLD with the seizure onset zone and the observation that the presence of IED-correlated BOLD activations remote from the seizure onset zone is associated with poorer outcome is particularly interesting. These findings support the argument that EEG-fMRI may have a valuable role in pre-surgical evaluation in focal epilepsy.

Acknowledgements

This work was funded by the Medical Research Council (G0301067).

This work was undertaken at UCLH/UCL who received a proportion of funding from the Department of Health's NIHR Biomedical Research Centres funding scheme and supported by a grant from the UK Medical Research Council no.G0301067. We are grateful to the Big Lottery Fund, Wolfson Trust and National Society for Epilepsy for supporting the NSE MRI scanner.

HL was supported by the Deutsche Forschungsgemeinschaft (LA 1452/3-1) and the Bundesministerium für Bildung und Forschung. SV was supported by the "Fonds de Perfectionnement" of the University Hospital of Geneva, Switzerland. JD receives funding from the Wellcome Trust (067176) and the Medical Research Council (G9805089) and the National Society for Epilepsy. We thank Philippa Bartlett, Jane Burdett, Elaine Williams and Anna Vaudano for help with scanning and all the patients who participated in the study.

**Copyright Licence Statement**

The Corresponding Author has the right to grant on behalf of all authors and does grant on behalf of all authors, an exclusive licence (or non-exclusive for government employees) on a worldwide basis to the BMJ Publishing Group Ltd and its Licensees to permit this article (if accepted) to be published in Journal of Neurology, Neurosurgery & Psychiatry and any other BMJ PGL products to exploit all subsidiary rights, as set out in our licence (<http://submit-jnnp.bmj.com/submission/submit?roleName=author&msid=JNNP/2009/196253&gotoPage=1&nextpage=QUESTIONS>).

**FIGURE LEGENDS****Figure 1****Patient 1:**

**Patient with left mesial temporal lobe epilepsy and left hippocampal sclerosis on structural MRI at 1.5 Tesla. Interictal EEG revealed left temporal spikes. EEG-fMRI showed widespread activation in the left anterior temporal lobe. Comparison with the post-operative T1 weighted MRI showed the IED-related BOLD cluster within the resection margins. The patient is seizure free (ILAE class 1) 38 months post-surgery.**

**A. EEG-fMRI. Left temporal spike correlated activation overlaid on EPI in individual space ( $p < 0.05$  FWE corrected for multiple comparisons, SPM-T test  $z = 6.89$ ). Crosshair at global maximum.**

**B. Event related response for the same IED correlated BOLD at global maximum. Event (spike) related haemodynamic response + 90% confidence interval (dashed lines). Time = time in seconds after event.**

**C. Post operative T1 weighted image showing resected region in same location as BOLD response.**

**Fig 2****Patient 10: Right frontal lobe epilepsy**

**Patient with right frontal atrophy. Electroclinical localisation suggested right frontal seizure onset. During EEG-fMRI, bifrontal spike wave discharges were recorded most marked in F4. Electrographic seizures were recorded with similar EEG appearance. Maximal BOLD activation in the right mesial pre-motor cortex with further significant clusters in the right supplementary motor area and right orbito-frontal cortex was associated with both ictal and interictal activity. Limited right frontal resection was carried out guided by intracranial EEG, and the region of activation extended beyond resection margins. Seizure frequency was unchanged at 12 months (ILAE class 5).**

**A. Interictal correlated BOLD activation (SPM T-test, corrected for multiple comparisons FWE  $p < 0.05$ ,  $z = 7.6$ )**

**B. Plotted response for the same events at global maximum. Event (spike) related haemodynamic response + 90% confidence interval (dashed lines). Time = time in seconds after event.**

**C. Post-operative resection seen on T1 weighted MRI.**

## Reference List

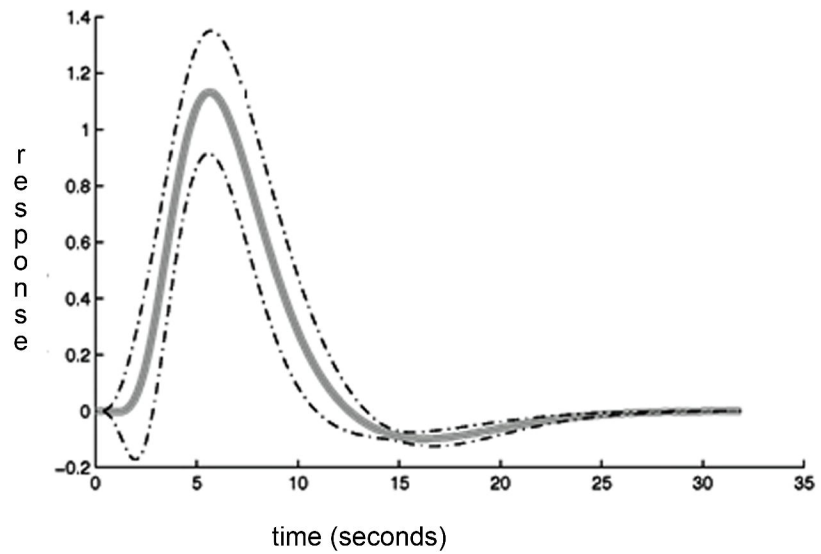
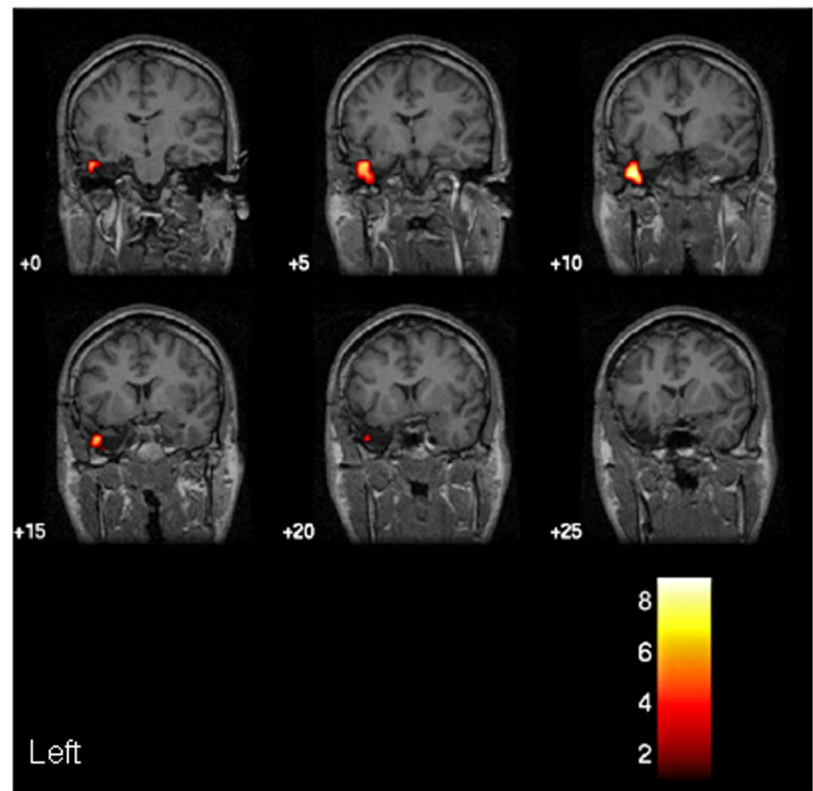
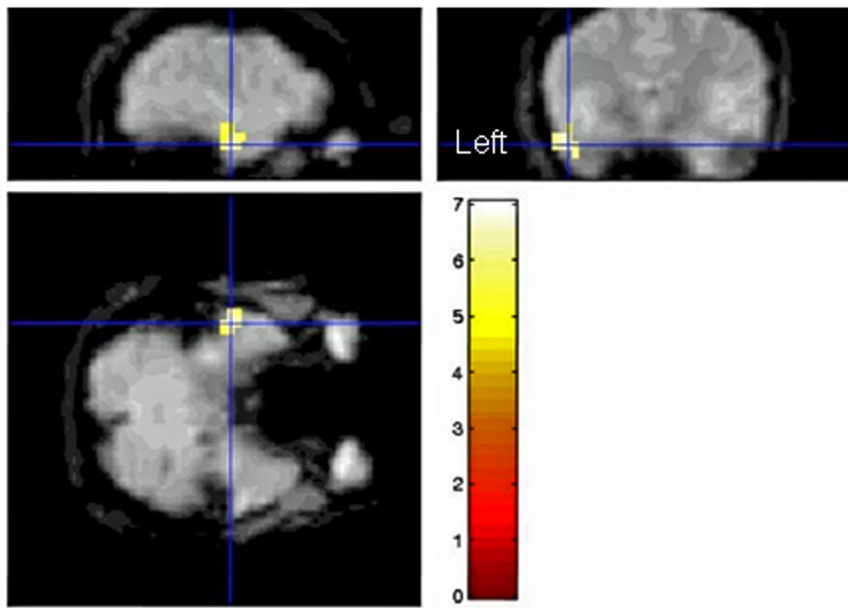
1. Rosenow F, Luders H. Presurgical evaluation of epilepsy. *Brain* 2001;**124**:1683-700.
2. Siegel AM, Jobst BC, Thadani VM, Rhodes CH, Lewis PJ, Roberts DW, Williamson PD. Medically Intractable, Localization-related Epilepsy with Normal MRI: Presurgical Evaluation and Surgical Outcome in 43 Patients. *Epilepsia* 2001;**42**:883-8.
3. McGonigal A, Bartolomei F, Regis J, Guye M, Gavaret M, Fonseca AT-D, Dufour H, Figarella-Branger D, Girard N, Peragut JC, Chauvel P. Stereoelectroencephalography in presurgical assessment of MRI-negative epilepsy. *Brain* 2007;awm218.
4. Hamer HM, Morris HH, Mascha EJ, Karafa MT, Bingaman WE, Bej MD, Burgess RC, Dinner DS, Foldvary NR, Hahn JF, Kotagal P, Najm I, Wyllie E, Luders HO. Complications of invasive video-EEG monitoring with subdural grid electrodes. *Neurology* 2002;**58**:97-103.
5. Cossu MMD, Cardinale FMD, Castana LMD, Citterio AMD, Francione SMD, Tassi LMD, Benabid ALM, Lo Russo GMD. Stereoelectroencephalography in the Presurgical Evaluation of Focal Epilepsy: A Retrospective Analysis of 215 Procedures. [Article]. *Neurosurgery* 2005;**57**:706-18.
6. Knowlton RC, Elgavish R, Howell J, Blount J, Burneo JG, Faught E, Kankirawatana P, Riley K, Morawetz R, Worthington J, Kuzniecky RI. Magnetic source imaging versus intracranial electroencephalogram in epilepsy surgery: a prospective study. *Ann.Neurol.* 2006;**59**:835-42.
7. Knowlton RC, Elgavish RA, Bartolucci A, Ojha B, Limdi N, Blount J, Burneo JG, Ver HL, Paige L, Faught E, Kankirawatana P, Riley K, Kuzniecky R. Functional imaging: II. Prediction of epilepsy surgery outcome. *Ann.Neurol.* 2008;**64**:35-41.
8. Lemieux L, Salek-Haddadi A, Josefs O, Allen P, Toms N, Scott C, Krakow K, Turner R, Fish DR. Event-related fMRI with simultaneous and continuous EEG: description of the method and initial case report. *NeuroImage* 2001;**14**:780-7.
9. Krakow K, Woermann FG, Symms MR, Allen PJ, Lemieux L, Barker GJ, Duncan JS, Fish DR. EEG-triggered functional MRI of interictal epileptiform activity in patients with partial seizures. *Brain* 1999;**122 ( Pt 9)**:1679-88.



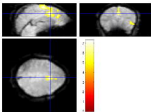
10. Jacobs J, Jacobs J, Boor R, Jansen O, Wolff S, Siniatchkin M, Stephani U. Localization of Epileptic Foci in Children with Focal Epilepsies using 3-Tesla Simultaneous EEG-fMRI Recordings. *Clinical Neurophysiology* 2007;**118**:e50-e51.
11. Salek-Haddadi A, Diehl B, Hamandi K, Merschhemke M, Liston A, Friston K, Duncan JS, Fish DR, Lemieux L. Hemodynamic correlates of epileptiform discharges: an EEG-fMRI study of 63 patients with focal epilepsy. *Brain Res.* 2006;**1088**:148-66.
12. Al Asmi A, Benar CG, Gross DW, Khani YA, Andermann F, Pike B, Dubeau F, Gotman J. fMRI Activation in Continuous and Spike-triggered EEG-fMRI Studies of Epileptic Spikes. *Epilepsia* 2003;**44**:1328-39.
13. Benar CG, Grova C, Kobayashi E, Bagshaw AP, Aghakhani Y, Dubeau F, Gotman J. EEG-fMRI of epileptic spikes: Concordance with EEG source localization and intracranial EEG. *NeuroImage* 2006;**30**:1161-70.
14. Lazeyras F, Blanke O, Perrig S, Zimine I, Golay X, Delavelle J, Michel CM, de Tribolet N, Villemure JG, Seeck M. EEG-triggered functional MRI in patients with pharmacoresistant epilepsy. *J Magn Reson. Imaging* 2000;**12**:177-85.
15. Zimine I, Seghier ML, Seeck M, Lazeyras F. Brain activation using triggered event-related fMRI. *NeuroImage* 2003;**18**:410-5.
16. Guye M, Ranjeva JP, Le Fur Y, Bartolomei F, Confort-Gouny S, Regis J, Chauvel P, Cozzzone PJ. 1H-MRS imaging in intractable frontal lobe epilepsies characterized by depth electrode recording. *NeuroImage* 2005;**26**:1174-83.
17. Seeck M, Lazeyras F, Michel CM, Blanke O, Gericke CA, Ives J, Delavelle J, Golay X, Haenggeli CA, de Tribolet N, Landis T. Non-invasive epileptic focus localization using EEG-triggered functional MRI and electromagnetic tomography. *Electroencephalography and Clinical Neurophysiology* 1998;**106**:508-12.
18. Zijlmans M, Huiskamp G, Hersevoort M, Seppenwoolde JH, van Huffelen AC, Leijten FS. EEG-fMRI in the preoperative work-up for epilepsy surgery. *Brain* 2007.
19. Wieser HG, Blume WT, Fish D, Goldensohn E, Hufnagel A, King D, Sperling MR, Luders H, Pedley TA. ILAE Commission Report. Proposal for a new classification of outcome with respect to epileptic seizures following epilepsy surgery. *Epilepsia* 2001;**42**:282-6.
20. Allen PJ, Josephs O, Turner R. A Method for Removing Imaging Artifact from Continuous EEG Recorded during Functional MRI. *NeuroImage* 2000;**12**:230-9.

21. Allen PJ, Polizzi G, Krakow K, Fish DR, Lemieux L. Identification of EEG Events in the MR Scanner: The Problem of Pulse Artifact and a Method for Its Subtraction. *NeuroImage* 1998;**8**:229-39.
22. Friston KJ, Fletcher P, Josephs O, Holmes A, Rugg MD, Turner R. Event-Related fMRI: Characterizing Differential Responses. *NeuroImage* 1998;**7**:30-40.
23. Friston KJ, Williams S, Howard R, Frackowiak RS, Turner R. Movement-related effects in fMRI time-series. *Magn Reson.Med.* 1996;**35**:346-55.
24. Lemieux L, Salek-Haddadi A, Lund TE, Laufs H, Carmichael D. Modelling large motion events in fMRI studies of patients with epilepsy. *Magn Reson.Imaging* 2007;**25**:894-901.
25. Liston AD, Lund TE, Salek-Haddadi A, Hamandi K, Friston KJ, Lemieux L. Modelling cardiac signal as a confound in EEG-fMRI and its application in focal epilepsy studies. *NeuroImage* 2006;**30**:827-34.
26. Ashburner J, Friston K. Multimodal Image Coregistration and Partitioning--A Unified Framework. *NeuroImage* 1997;**6**:209-17.
27. Lee SK, Lee SY, Kim KK, Hong KS, Lee DS, Chung CK. Surgical outcome and prognostic factors of cryptogenic neocortical epilepsy *Ann.Neurol.* 2005;**58**:525-32.
28. Salek-Haddadi A, Friston KJ, Lemieux L, Fish DR. Studying spontaneous EEG activity with fMRI. *Brain Research Reviews* 2003;**43**:110-33.
29. Kobayashi E, Bagshaw AP, Grova C, Gotman J, Dubeau F. Grey matter heterotopia: what EEG-fMRI can tell us about epileptogenicity of neuronal migration disorders. *Brain* 2006;**129**:366-74.
30. Godoy J, Luders H, Dinner DS, Morris HH, Wyllie E, Murphy D. Significance of sharp waves in routine EEGs after epilepsy surgery. *Epilepsia* 1992;**33**:285-8.
31. Salek-Haddadi A, Merschhemke M, Lemieux L, Fish DR. Simultaneous EEG-Correlated Ictal fMRI. *NeuroImage* 2002;**16**:32-40.
32. Kobayashi E, Hawco CS, Grova C, Dubeau F, Gotman J. Widespread and intense BOLD changes during brief focal electrographic seizures. *Neurology* 2006;**66**:1049-55.
33. Tyvaert L, Hawco C, Kobayashi E, Levan P, Dubeau F, Gotman J. Different structures involved during ictal and interictal epileptic activity in malformations of cortical development: an EEG-fMRI study. *Brain* 2008;**131**:2042-60.

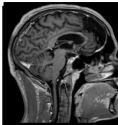
34. Vulliemoz S, Thornton R, Rodionov R, Carmichael DW, Guye M, Lhatoo S, McEvoy AW, Spinelli L, Michel CM, Duncan JS, Lemieux L. The Spatio-temporal Mapping of Epileptic Networks: Combination of EEG-fMRI and EEG Source Imaging. *NeuroImage* 2009; **46**: 834-43
  
35. Aghakhani Y, Kobayashi E, Bagshaw AP, Hawco C, Benar CG, Dubeau F, Gotman J. Cortical and thalamic fMRI responses in partial epilepsy with focal and bilateral synchronous spikes. *Clinical Neurophysiology* 2006;**117**:177-91.
  
36. Laufs H, Hamandi K, Salek-Haddadi A, Kleinschmidt AK, Duncan JS, Lemieux L. Temporal lobe interictal epileptic discharges affect cerebral activity in "default mode" brain regions. *Hum.Brain Mapp.* 2006.
  
37. Stefanovic B, Warnking JM, Kobayashi E, Bagshaw AP, Hawco C, Dubeau F, Gotman J, Pike GB. Hemodynamic and metabolic responses to activation, deactivation and epileptic discharges. *NeuroImage* 2005;**28**:205-15.



2a



2c



2b

