



HAL
open science

The Risk of Urothelial Bladder Cancer in Lynch syndrome is increased, in particular among MSH2 mutation carriers

R. S. van Der Post, L. A. Kiemeney, M. J.L. Ligtenberg, J. A. Witjes, C. A. Hulsbergen-van de Kaa, D. Bodmer, L. Schaap, C. M. Kets, J. H.J.M. van Krieken, N. Hoogerbrugge

► To cite this version:

R. S. van Der Post, L. A. Kiemeney, M. J.L. Ligtenberg, J. A. Witjes, C. A. Hulsbergen-van de Kaa, et al.. The Risk of Urothelial Bladder Cancer in Lynch syndrome is increased, in particular among MSH2 mutation carriers. *Journal of Medical Genetics*, 2010, 47 (7), pp.464. 10.1136/jmg.2010.076992 . hal-00557394

HAL Id: hal-00557394

<https://hal.science/hal-00557394>

Submitted on 19 Jan 2011

HAL is a multi-disciplinary open access archive for the deposit and dissemination of scientific research documents, whether they are published or not. The documents may come from teaching and research institutions in France or abroad, or from public or private research centers.

L'archive ouverte pluridisciplinaire **HAL**, est destinée au dépôt et à la diffusion de documents scientifiques de niveau recherche, publiés ou non, émanant des établissements d'enseignement et de recherche français ou étrangers, des laboratoires publics ou privés.

The Risk of Urothelial Bladder Cancer in Lynch syndrome is increased, in particular among *MSH2* mutation carriers

R.S. van der Post^{1,2}, L.A. Kiemeny^{3,4,5}, M.J.L. Ligtenberg^{1,2}, J.A. Witjes⁴, C.A. Hulsbergen-van de Kaa², D. Bodmer¹, L. Schaap¹, C.M. Kets¹, J.H.J.M. van Krieken², N. Hoogerbrugge^{1,6}

¹Department of Human Genetics, Radboud University Nijmegen Medical Centre, Nijmegen, the Netherlands

²Department of Pathology, Radboud University Nijmegen Medical Centre, Nijmegen, the Netherlands

³Department of Epidemiology, Biostatistics and HTA, Radboud University Nijmegen Medical Centre, Nijmegen, the Netherlands

⁴Department of Urology, Radboud University Nijmegen Medical Centre, Nijmegen, the Netherlands

⁵Comprehensive Cancer Centre East, Nijmegen, the Netherlands

⁶Department of Medical Oncology, Radboud University Nijmegen Medical Centre, Nijmegen, the Netherlands

Address of Correspondence:

Nicoline Hoogerbrugge, MD, PhD

Professor in Hereditary Cancer

849 Human Genetics, Radboud University Nijmegen Medical Centre

Postbox 9101

6500 HB Nijmegen

The Netherlands

Tel +31 24 3613946

n.hoogerbrugge@antrg.umcn.nl

Key words: Lynch Syndrome, HNPCC, urothelial cancer, bladder cancer, MSI.

Word count: 2641

Abstract

Background: Colorectal, endometrial and upper urinary tract tumours are characteristic for Lynch syndrome (HNPCC). The aim of the present study was to establish whether carriers of mutations in mismatch repair genes *MLH1*, *MSH2* or *MSH6* are at increased risk of urinary bladder cancer.

Methods: Carriers and first-degree relatives of 95 families with a germline mutation in the *MLH1* (n=26), *MSH2* (n=43), or *MSH6* (n=26) gene were systematically questioned about the occurrence of carcinoma. The cumulative risk of cancer occurring before the age of 70 years (CR70) was compared to the CR70 of the general Dutch population. Microsatellite instability (MSI) testing and/or immunohistochemistry (IHC) for mismatch repair proteins was performed on bladder tumour tissue.

Results: Bladder cancer was diagnosed in 21 patients (90% men) from 19 Lynch syndrome families (2 *MLH1*, 15 *MSH2*, and 4 *MSH6*). CR70 for bladder cancer was 7.5% [95% CI 3.1-11.9%] for men and 1.0% [95% CI 0-2.4%] for women, resulting in relative risks for mutation carriers and first-degree relatives of 4.2 [95% CI 2.2-7.2] for men and 2.2 [95% CI 0.3-8.0] for women. Men carrying an *MSH2* mutation and their first-degree relatives were at highest risks: CR70 for bladder and upper urinary tract cancer being 12.3% [95% CI 4.3-20.3%] and 5.9% [95% CI 0.7-11.1%]. Bladder cancer tissue was MSI positive in 6/7 tumours and loss of IHC staining was found in 14/17 tumours, indicating Lynch syndrome aetiology.

Conclusion: Patients with Lynch syndrome carrying an *MSH2* mutation are at increased risk of urinary tract cancer including bladder cancer. In these cases surveillance should be considered.

Key words: Lynch Syndrome, HNPCC, urothelial cancer, bladder cancer, MSI.

Introduction

Lynch syndrome, previously called Hereditary Non-Polyposis Colon Carcinoma (HNPCC), is caused by a germline mutation in one of the mismatch repair (MMR) genes *MLH1*, *MSH2*, *MSH6* and *PMS2*. It results in a large increase in spontaneous mutations and thus has a direct oncogenic effect. Besides the high risk of developing colorectal carcinomas of 10 to 80%, Lynch syndrome family members are at increased risk of developing several extra-colonic cancers and tumours at a relatively young age: endometrial cancer, carcinomas of the ovary, small bowel and biliary tract cancer, sebaceous gland tumours and urothelial carcinomas (UC) of the upper urinary tract.[1-10] The lifetime risk of upper urinary tract cancer in Lynch syndrome varies in different studies from 0.4% to 20%.[1, 2, 6, 9, 11-18] MSI is present in these urothelial carcinomas of the upper urinary tract.[19, 20]

A study based on the Swedish family cancer database, quantifying the occurrence of UC in families with at least 4 generations showed that families fulfilling the Bethesda criteria[21] have an increased risk of cancers in the ureter, but not in the urinary bladder.[18] It was concluded that in families at risk for Lynch syndrome, UC of the bladder occurs at a frequency comparable to that in the general population. The study did not report results which were stratified by type of mutation. On the contrary, in a study by Geary et al, bladder cancer was more common in *MSH2* mutation families than expected in the general population, the relative risk (RR) being 3.6, $P=0.001$. [16] Cumulative risks were not presented. In their study every case of bladder cancer was accompanied by cancer of the ureter in the family. For that reason, the authors concluded that the risk of bladder cancer was increased only in families with ureter cancer.

In addition to morphologic resemblance, sporadic urothelial cell cancers of the renal pelvis, ureter and bladder share the most important risk factors and molecular genetic aberrations; it is therefore remarkable that the risk of bladder cancer does not appear to have increased in Lynch syndrome families, while the risk of upper urinary tract cancer has. The aim of the present study was to establish whether patients with Lynch syndrome are at increased risk of cancer of the urinary bladder.

Material and methods

Patient population

From 95 Lynch syndrome families, we selected all carriers of a germline mutation in the *MSH2*, *MLH1* or *MSH6* gene, who had been seen and registered at the Department of Human Genetics of the Radboud University Nijmegen Medical Centre between 1996 and November 2008, and all their first-degree relatives: a total of 627 men and 617 women. Information on mutation carriers and their first-degree relatives was systematically collected by postal questionnaires and telephone calls with contact persons when data were outdated for more than 1 year. In each family, one to six such persons were contacted in order to obtain up-to-date information on the occurrence of carcinoma in mutation carriers and their first-degree relatives. First-degree relatives with MMR-gene mutation negative tests were excluded. All diagnoses of UC carcinoma were verified and confirmed by review of pathology reports or medical reports.

Statistical analysis

We calculated follow-up time for each family member with the date of birth as starting point until the dates of last contact, death, or diagnosis of cancer, whichever came first. Kaplan-Meier (KM) survival analyses were used to calculate the cumulative risk (plus standard error) of cancer until specific ages. We chose the age of 70 as censoring age because the number of patients being at risk after that age is small. SPSS version 16.0 was used for KM analyses. For reference, we used life-table cancer risk estimates as reported by the Dutch Cancer Registry (www.ikcnet.nl), based on cancer incidence and population demographics in 2003.[22] The life-table risks of urinary tract cancer are almost identical to those reported by SEER for whites in the U.S.A. (seer.cancer.gov). Relative risks of cancer among specific groups compared to the Dutch reference risks were defined as the ratio between observed and expected numbers of tumours before the age of 70 years. Exact, 95% confidence intervals of the relative risks were calculated using the publicly available OpenEpi software (www.openepi.com).

Histology and molecular analysis

After written informed consent, histology reports and tissue blocks of UC of the bladder, ureter or renal pelvis were collected. Clinicopathological features of the urothelial cell cancers were reviewed by two experienced pathologists using haematoxylin and eosin (H&E) slides. The following parameters were scored: 1) tumour differentiation according to the WHO 2004 grading system; 2) T-stage (TNM 2002); 3) Growth pattern: papillary or solid; 4) presence of tumour-infiltrating lymphocytes (TILs): absent, moderate or dense.

For microsatellite instability (MSI) analysis, areas of the formalin fixed and paraffin embedded tissues containing either tumour cells (at least 30%) or normal cells were marked and material from these areas was isolated separately using a lysis buffer and a protein precipitation solution (Purogene, Gentra systems, Minneapolis). PCR of the markers D2S123, D5S346, D17S250, BAT25, BAT26 and BAT40 was performed using standard conditions in the presence of a fluorescently labelled primer. GeneScan analysis was performed on an ABI373A, ABI3100 or ABI3700 apparatus (PE Biosystems, Foster City, CA). A tumour was considered MSI positive, when at least 2 of these standard set of markers, or 30% of an extended set, showed instability.[23]

Immunohistochemistry (IHC) was performed on formalin-fixed, paraffin-embedded tissues. Slides were stained with antibodies against MLH1 (Pharmingen code: 51-1327gr), PMS2 (Pharmingen code: 556415), MSH2 (Oncogene Research Products code: NA26) and MSH6 (Transduction Laboratories code: G70220). Staining patterns of MMR proteins were evaluated using normal epithelial, stromal and inflammatory cells as internal controls. Stained slides were scored as (1) positive, *i.e.* showing nuclear staining in at least some tumour cells; (2) negative, *i.e.* no staining of the tumour with a positive internal control or (3) not assessable, *i.e.* insufficient technical quality to provide an unambiguous result despite repeated assays.[24, 25] As a verification 5 anonymous sporadic cancers of the bladder were taken at random from the files of the Department of Pathology.

Results

Members of 95 Lynch syndrome families diagnosed by a germline mutation in *MLH1* (n=26), *MSH2* (n=43) or *MSH6* (n=26) were questioned by contact persons for occurrence of cancer such as UC of the bladder, ureter or renal pelvis. The total cohort of 1244 persons consisted of 406 proven mutation carriers (individuals with a pathogenic mutation on germline mutation analysis) and 838 first-degree relatives. The latter group consisted of 111 obligate mutation carriers (concluded because of their position in the pedigree in relation to relatives tested positive for a mutation) and 727 persons at 50% risk to be mutation carriers. In 22 families, at least one (n=27) confirmed mutation carrier or first-degree relative of a mutation carrier was diagnosed with UC of the urinary bladder, ureter or renal pelvis. In two additional *MSH2* families, the patient with UC of the bladder was not a first but a second-degree relative of the mutation carrier diagnosed. Second-degree relatives were not included in the KM risk analysis but the two second degree relatives with UC were included in the histopathology study. UC of the bladder was diagnosed in 21 patients from 19 Lynch syndrome families, the majority (71%) coming from *MSH2* families (15 *MSH2*, 2 *MLH1*, and 4 *MSH6*); 19 out of 21 (90%) were men. Two patients with bladder cancer were at 50% risk of being an *MSH2* mutation carrier but could not be tested. Bladder cancer was diagnosed at an average age of 60 ± 12 years (range 41-84), which is approximately 10 years younger than the average age of sporadic bladder cancer in the Netherlands.

The cumulative risk of bladder cancer until the age of 70 (CR70) in all MMR mutation carriers and their first-degree relatives was 7.5% [95% CI 3.1-11.9%] for men and 1.0% [95% CI 0-2.4%] for women. (Table 1) The corresponding CR70 for the Dutch population is 1.8% for men and 0.5% for women. The relative risk for carriers of any MMR mutation, as compared to the general Dutch population, was 4.2 [95% CI 2.2-7.2, $p < 0.001$] for men and 2.2 [95% CI 0.3-8.0, $p = 0.5$] for women (table 1). *MSH2* mutation carriers and first-degree relatives showed the highest risk of bladder cancer: CR70 is 12.3% [95% CI 4.3-20.3%] in men and 2.6% [95% CI 0-3.9%] for women. The relative risk of bladder cancer in carriers of an *MSH2* mutation and their first-degree relatives, as compared to the general Dutch population, was 7.0 [95% CI 3.4-13.0, $p < 0.001$] for men and 5.8 [95% CI 0.5-16.1, $p = 0.15$] for women. The overall CR70 risk for urinary tract cancer, including the bladder, in *MSH2* mutation carriers

and first-degree relatives was 18.2% [95% CI 5.0-31.4%] in men and 8.4% [95% CI 0-15.4%] in women (table 1).

Table 1 Life-table cumulative risks of cancers before the age of 70 (%)

	Sex	Bladder	Ureter and renal pelvis	Urinary tract	Colorectal	Endometrial
MMR mutation carriers and first degree relatives	M n = 542	7.5 (3.1 - 11.9) n = 13	3.7 (0.9 - 6.5) n = 7	11.2 (4.0 - 18.4) n = 20	43.8 (37.6 - 50.0) n = 141	
	F n = 519	1.0 (0 - 2.4) n = 2	2.7 (0.3 - 5.1) n = 5	3.7 (0 - 7.5) n = 7	38.7 (32.5 - 44.9) n = 112	27.4 (21.4 - 33.4) n = 70
<i>MLH1</i> mutation carriers and first degree relatives	M n = 138	10.8 (0 - 25.2) n = 2	4.8 (0 - 14.0) n = 1	15.6 (0 - 39.2) n = 3	57.0 (45.2 - 68.8) n = 51	
	F n = 148	0 n = 0	2.4 (0 - 7.2) n = 1	2.4 (0 - 7.2) n = 1	50.4 (37.0 - 63.8) n = 40	19.5 (8.5 - 30.5) n = 12
<i>MSH2</i> mutation carriers and first degree relatives	M n = 248	12.3 (4.3 - 20.3) n = 10	5.9 (0.7 - 11.1) n = 5	18.2 (5.0 - 31.4) n = 15	43.5 (34.7 - 52.3) n = 65	
	F n = 213	2.6 (0 - 3.8) n = 2	5.8 (0 - 11.6) n = 4	8.4 (0 - 15.4) n = 6	47.4 (36.8 - 58.0) n = 51	26.1 (16.9 - 35.3) n = 28
<i>MSH6</i> mutation carriers and first degree relatives	M n = 156	1.3 (0 - 3.9) n = 1	1.3 (0 - 3.9) n = 1	2.6 (0 - 7.8) n = 2	31.0 (20.0 - 42.0) n = 25	
	F n = 158	0 n = 0	0 n = 0	0 n = 0	22.1 (13.1 - 31.1) n = 21	32.7 (22.3 - 43.1) n = 30
Proven and obligate MMR mutation carriers	M n = 226	16.4 (6.4 - 26.4) n = 12	9.1 (2.1 - 16.1) n = 7	25.5 (8.5 - 42.5) n = 19	70.1 (60.9 - 79.3) n = 108	
	F n = 232	1.9 (0 - 4.9) n = 2	5.4 (0.2 - 10.6) n = 5	7.3 (0 - 15.5) n = 7	56.6 (47.4 - 65.8) n = 89	35.4 (26.8 - 44.0) n = 53
Dutch population	M	1.79	0.10	1.89	2.70	
	F	0.45	0.04	0.49	2.14	1.05

M=male, F=female

Two or more primary urinary tract cancers of which one in the bladder were diagnosed in 9 of all 21 patients with bladder cancer; in six patients these two cancers were diagnosed synchronously or within 1 year. The remaining 3 patients, with a metachronous combination of bladder and upper urinary tract cancer, had their bladder cancer diagnosed earlier in life than the upper urinary tract cancer. Exclusive upper urinary tract cancer was diagnosed in 8 patients from 7 Lynch syndrome families, 63% caused by *MSH2* (5 *MSH2*, 2 *MLH1*, and 1 *MSH6*). The CR70 of colorectal cancer for confirmed MMR mutation carriers was 63.2% [95% CI 56.6-69.8%] and the CR70 of endometrial cancer was 35.4% [95% CI 26.8-44.0%] (table 1).

Bladder cancers from germline *MSH2* mutation carriers were tested for mismatch repair deficiency: MSI was present in bladder tumour DNA from 6 out of 7 cases, and IHC staining of *MSH2* protein was absent in 9 out of 11 cases, indicating mismatch repair deficiency (table 2). Additionally, IHC staining of *MLH1* or *MSH6* proteins was absent in 5 out of 6 bladder carcinomas from *MLH1* or *MSH6* germline mutation carriers, respectively (table 2). Three bladder tumours were identified having normal IHC staining and 1 tumour was MSS. As a control, IHC of 5 sporadic bladder

carcinomas showed normal staining of all 4 MMR system proteins. No typical histological characteristics were observed in the bladder carcinomas when compared with sporadic bladder carcinomas (table 2).

Table 2 Clinicohistopathological features of all patients with UCC of the urinary bladder

Family no.	Sex	Mutated MMR gene	Mutation	Age bladderca	Other malignancies (age at diagnosis)	Immunohistochemistry				MSI	Analyzed samples of the urinary bladder	T stage	Grading	Morphology
						MLH1	MSH2	MSH6	PMS2					
77	M	<i>MLH1</i>	c.588+3_588+6del	64	RP(63)	-	+	+	-	ND	B	Ta	HG	1
73	M	<i>MLH1</i>	c.1852_1854del (p.Lys618del)	66	ES(73)	-	+	+	-	ND	B	T1	HG	1
12	M	<i>MSH2</i>	c.1387-7_1510+7del (Del exon 9)	41	C(49)	+	-	-	+	MSI	TUR	T1	HG	1
	F	<i>MSH2</i>	(sister)	42	UR(50), RP(51), E(45), Cx2(52)	+	-	-	+	MSI	TUR	T1	HG	1
13	M	<i>MSH2</i>	c.1-?_1076+?del (Del exon 1-6)	43	RP(51), C(41)	+	-	-	+	MSI	TUR	Ta	LG	1
	M	<i>MHS2</i> 50% carrier risk	(father)	68	Cx3(52, 59, 66)	ND	ND	ND	ND	ND	NA		LG	1
7	M	<i>MSH2</i>	c.1-?_211+7del (Del exon 1)	44		+	-	-	+	ND	B	≥T1	HG	1
4	M	<i>MSH2</i>	c.1-?_211+7del (Del exon 1)	49	C(58), PR(49)	+	-	-	+	MSI	CP	T2a	HG	1
17	M	<i>MSH2</i>	c.1386+1G>T	52	Cx2(42, 47)	+	-	tw	+	MSI	B	T1	HG	1
10	M	<i>MSH2</i>	c.1-?_1076+?del (Del exon 1-6)	57	C(42)	+	-	-	+	MSI	TUR	Ta	LG	1
6	M	<i>MSH2</i>	c.1203dup (p.Gln402fs)	51	C(56)	ND	ND	ND	ND	ND	NA			
3	M	<i>MSH2</i>	c.1216C>T (p.Arg406X)	58	UR(58), Cx(33,34)	ND	ND	ND	ND	ND	NA			
11	M	<i>MSH2</i>	<i>EPCAM</i> 3'end deletion	66		+	+	+	+	MSS	B	Ta	HG	1
16	M	<i>MSH2</i>	c.642_645del (p.Gln215X)	66	C(46)	ND	ND	ND	ND	ND	NA			
5	F	<i>MSH2</i>	c.793-?_1076+?del (Del exon 5-6)	63	UR(67), C(50), BR(72)	+	-	tw	+	ND	TUR	T1	HG	1
1	M	<i>MHS2</i> 50% carrier risk	c.212-1G>A	70		+	+	+	+	ND	B	T2a	HG	2
9	M	<i>MSH2</i>	c.942+2T>G	74	C(65)	+	-	tw	+	ND	B	Ta	HG	1
49	M	<i>MSH6</i>	c.1-?_457+7del (Del exon 1-2)	56	UR(56), RP(57), ME(58), PR(57)	+	-	+	+	ND, RP MSI	CP	T1	HG	1
67	M	<i>MHS6</i>	c.3514dup (p.Arg1172fs)	71	UR(70), C(70)	+	+	+	+	ND	B	Ta	LG	1
60	M	<i>MSH6</i>	c.651dup (p.Lys218X)	73	UR(73), PR(67), C(61)	+	-	+	+	ND	TUR	Ta	LG	1
48	M	<i>MSH6</i>	c.3261del (p.Phe1088fs)	84	URx2(84), C(63)	+	-	+	+	ND	B	Ta	HG	1

M=male, F=female, C=colon, UR=ureter, RP=renal pelvis, E=endometrial, PR=prostate, BR=breast, ES=esophageal, ME=melanoma, tws=tumor weaker than stroma, +=MMR protein immunohistochemical staining present, -=MMR protein immunohistochemical staining absent, MSS=microsatellite stable, MSI=microsatellite instability, TUR=transurethral resection, CP=cystoprostatectomy, B=biopsy, NA=not accessible, HG=high grade, LG=low grade, 1=papillary, 2=solid growth pattern

Discussion

This study indicates an increased risk of urothelial cancer of both the urinary bladder and the upper urinary tract (ureter and renal pelvis) in patients with Lynch syndrome carrying a germline *MSH2* mutation. Furthermore, this study indicates that cancer of the urinary bladder, ureter and renal pelvis is also, though rarely associated with *MSH6* or *MLH1* mutations. A causal relation between *MSH2* deficiency and bladder cancer is likely. In the first place because bladder cancers in these families often show MSI and/or absence of IHC staining of the *MSH2* protein, just like upper urothelial tract cancer and colorectal cancer. In the second place because of the presence of two *MSH2* mutation families, each of which contained two first-degree family members with bladder cancer, and with three of the bladder cancers diagnosed under the age of 50 (as illustrated in figure 3). It is interesting that

especially *MSH2* mutation carriers are at increased risk of urothelial cancer, as observed in this cohort and in previous studies.[2, 12, 16] The diversity in the function of the *MSH2*, *MLH1* and *MSH6* protein might be responsible for the variation in cancer risk. Environmental factors (e.g. smoking status) may also affect the urologic tract cancer occurrence rates but we do not have the necessary information to determine if this might contribute to the differences.

In 8 out of 21 patients with bladder cancer, this was their first cancer diagnosis whereas at this stage 5 of them developed another Lynch syndrome associated cancer at an older age. Therefore, early diagnosis of Lynch syndrome may prevent development of a second primary cancer, especially CRC by regular colonoscopy with polypectomy.[26] The diagnosis of Lynch syndrome in healthy relatives may lead to prevention or early detection of cancer, which improves the prognosis.[26] Thus bladder cancer, just like upper urothelial tract cancer, can be added to the Bethesda criteria[21] and the Amsterdam II criteria[27] and lead to the clinical suspicion of Lynch syndrome. The occurrence of bladder cancer can be used in family history taking and molecular diagnostics to identify the families that are at risk of Lynch syndrome.

Cumulative risks of colorectal and endometrial cancer are within the ranges published by other studies.[2-5, 8, 13, 28, 29] Bladder cancer risk observed in our cohort was significantly higher than that observed in previous studies.[6, 9, 12, 16, 18] These studies differed from our study by a) type of risk that was calculated, b) by type of population and c) whether or not the type of mutation was distinguished. The data of these studies are given in Table 3. Additionally the discrepancy in bladder cancer risk between our study and other studies may result from our systematic data collection approach (obtaining of up-to-date information). This led to the discovery of nine new cases of bladder carcinoma, previously unrevealed with the standard procedure of a clinical geneticist taking the family history.

Table 3 Overview of risk of bladder cancer in previous studies

Source	Population	Design and Methods	Data obtained from	Stratified by type of mutation	Risk of bladder cancer
Bermejo et al. ¹⁸ Gastroenterology 2005	All familymembers of 5095 families fulfilling the Bethesda criteria	Retrospective; analysis of incidence of cancer, compared to the general population	Nation-wide Swedish family cancer database	No	RR= 1.08 (0.90-1.24)
Geary et al. ¹⁶ Fam cancer 2008	All familymembers of 130 families with <i>MLH1</i> , <i>MSH2</i> or <i>MSH6</i> mutations	Retrospective; analysis of incidence of cancer, compared to the general population	Records from 6 cancer genetics units in the London region	Yes , exclusively for <i>MSH2</i>	RR (<i>MSH2</i>)=3.6, p=0.001
Sijmons et al. ⁵ J Urol 1998	HNPCC patients and their FDR of 50 families	Retrospective; analysis of incidence of cancer, compared to the general population	Dutch hereditary nonpolyposis colorectal cancer registry	No	RR=1.52 (95% CI 0.83-3.66, p>0.05)
Watson and Lynch ⁵ Cancer 1993	High risk members of 23 HNPCC families	Retrospective; analysis of incidence of cancer, compared to the general population	Contact with family members known at the Hereditary Cancer Institute Creighton and medical records	No	RR= 1.1 (NS)
Watson et al. ¹² Int. J. Cancer 2008	MC+PMC and their FDR of 281 families with <i>MLH1</i> or <i>MSH2</i> mutations	Retrospective; analysis of incidence of cancer	4 Lynch syndrome registries of Denmark, Finland, the Netherlands and USA	Yes	CR70* overall=2.4% <i>MLH1</i> (F)=0.7%, (M)=1.6%; <i>MSH2</i> (F)= 2.7%, (M)=7.4%

FDR= first degree relative; MC= mutation carrier; PMC= probable mutation carrier; CR= cumulative risk; RR= relative risk; NS= not significant; F=female; M=male
 *As Watson et al. did not report bladder cancer risks, we calculated bladder cancer risks by subtracting CR70 6.0 (UTC risk without bladder cancer) from 8.4 (UTC risk kidney, renal pelvis, ureter, bladder). The same has been done for the *MLH1* and *MSH2* subgroups.

Considering the high risk of urothelial tract cancer in *MSH2* mutation carriers, a surveillance program needs to be developed. At present various recommendations have been published. The present European guidelines for families with a MMR mutation include ultrasound and urine analysis every 1-2 years with patients from the age of 30 to 35 only in cases where upper urinary tract cancer runs in the family (two or more cases of UC).[11] The American guidelines include urinalysis with cytology every 1-2 years with patients from the age of 25 to 35 for all family members with Lynch syndrome.[30] Watson et al proposed (unspecified) surveillance of patients starting with the age of 50, especially for families that carry mutations in *MSH2*. [12] Although cytology is the superior marker in terms of specificity,[31] Myrhyoy et al showed that the sensitivity of urine cytology in diagnosing asymptomatic upper urinary tract cancer in Lynch syndrome is approximately 30%. Therefore, cytology only is not a proper method of surveillance.[32] The most important biomarker of urothelial cancer is macro- or microscopically haematuria, which occurs in 85% of patients with bladder cancer.[33] Consequently, Koornstra et al recommend annual surveillance for haematuria by urinary dipstick, of all patients with Lynch syndrome, beginning at the age of 45 to 50.[34] The recent use of sensitive transducers has improved imaging of the upper urinary tract and bladder by ultrasonography. It was

shown to be as accurate in the detection of renal masses and bladder filling defects as intravenous urography and CT scanning (EAU Guidelines 2008).

Further studies are needed for developing an optimum early detection strategy concerning the appropriate interval, methods to be used and patient groups to be included. Until then, we propose a combination of ultrasonography of the bladder and upper urinary tract, urinary cytology and urine sediment (erythrocytes) every 1 to 2 years. We recommend a surveillance program for UC of the bladder and upper urinary tract for all *MSH2* mutation carriers starting at the age of 40, which is based on the youngest Lynch syndrome patient with bladder cancer reported in the literature (age 40) and observed in our study (age 41).[35] The top age limit of surveillance for UC can be similar to that of surveillance for colorectal cancer. Surveillance should not be limited to families with a history of UC, because in our study clustering of urinary tract cancer was only observed in 5 families, while 19 patients had a negative family history of urinary tract cancer.

Box 1 Recommendations of UC surveillance in Lynch syndrome

1. Surveillance with a combination of ultrasound of the bladder and upper urinary tract, urinary cytology and sediment
2. In every *MSH2* mutation carrier
3. From age 40 and up
4. Performed every 1-2 years

In conclusion, our data suggest that in addition to upper urinary tract cancer, urothelial cancer of the urinary bladder is part of the Lynch syndrome tumour spectrum. Especially carriers of an *MSH2* mutation are at increased risk of urinary tract cancer including cancer to the bladder. In these cases we consider surveillance necessary.

Reference List

- (1) Aarnio M, Mecklin JP, Aaltonen LA, Nystrom-Lahti M, Jarvinen HJ. Life-time risk of different cancers in hereditary non-polyposis colorectal cancer (HNPCC) syndrome. *Int J Cancer* 1995 Dec 20;64(6):430-3.
- (2) Vasen HF, Stormorken A, Menko FH, Nagengast FM, Kleibeuker JH, Griffioen G, Taal BG, Moller P, Wijnen JT. *MSH2* mutation carriers are at higher risk of cancer than *MLH1* mutation

- carriers: a study of hereditary nonpolyposis colorectal cancer families. *J Clin Oncol* 2001 Oct 15;**19**(20):4074-80.
- (3) Dunlop MG, Farrington SM, Carothers AD, Wyllie AH, Sharp L, Burn J, Liu B, Kinzler KW, Vogelstein B. Cancer risk associated with germline DNA mismatch repair gene mutations. *Hum Mol Genet* 1997 Jan;**6**(1):105-10.
 - (4) Hendriks YM, Wagner A, Morreau H, Menko F, Stormorken A, Quehenberger F, Sandkuijl L, Moller P, Genuardi M, Van HH, Tops C, van PM, Verkuijlen P, Kenter G, Van MA, Meijers-Heijboer H, Tan GB, Breuning MH, Fodde R, Wijnen JT, Brocker-Vriends AH, Vasen H. Cancer risk in hereditary nonpolyposis colorectal cancer due to MSH6 mutations: impact on counseling and surveillance. *Gastroenterology* 2004 Jul;**127**(1):17-25.
 - (5) Quehenberger F, Vasen HF, van Houwelingen HC. Risk of colorectal and endometrial cancer for carriers of mutations of the hMLH1 and hMSH2 gene: correction for ascertainment. *J Med Genet* 2005 Jun;**42**(6):491-6.
 - (6) Sijmons RH, Kiemeney LA, Witjes JA, Vasen HF. Urinary tract cancer and hereditary nonpolyposis colorectal cancer: risks and screening options. *J Urol* 1998 Aug;**160**(2):466-70.
 - (7) Lynch HT, Taylor RJ, Lynch JF, Knezetic JA, Barrows A, Fodde R, Wijnen J, Wagner A. Multiple primary cancer, including transitional cell carcinoma of the upper uroepithelial tract in a multigeneration HNPCC family: molecular genetic, diagnostic, and management implications. *Am J Gastroenterol* 2003 Mar;**98**(3):664-70.
 - (8) Vasen HF, Wijnen JT, Menko FH, Kleibeuker JH, Taal BG, Griffioen G, Nagengast FM, Meijers-Heijboer EH, Bertario L, Varesco L, Bisgaard ML, Mohr J, Fodde R, Khan PM. Cancer risk in families with hereditary nonpolyposis colorectal cancer diagnosed by mutation analysis. *Gastroenterology* 1996 Apr;**110**(4):1020-7.
 - (9) Watson P, Lynch HT. Extracolonic cancer in hereditary nonpolyposis colorectal cancer. *Cancer* 1993 Feb 1;**71**(3):677-85.
 - (10) Baglietto L, Lindor NM, Dowty JG, White DM, Wagner A, Gomez Garcia EB, Vriends AH, Cartwright NR, Barnetson RA, Farrington SM, Tenesa A, Hampel H, Buchanan D, Arnold S, Young J, Walsh MD, Jass J, Macrae F, Antill Y, Winship IM, Giles GG, Goldblatt J, Parry S, Suthers G, Leggett B, Butz M, Aronson M, Poynter JN, Baron JA, Le ML, Haile R, Gallinger S, Hopper JL, Potter J, de la Chapelle A, Vasen HF, Dunlop MG, Thibodeau SN, Jenkins MA. Risks of Lynch Syndrome Cancers for MSH6 Mutation Carriers. *J Natl Cancer Inst* 2010 Feb 3;**102**(3):193-201.
 - (11) Vasen HF, Moslein G, Alonso A, Bernstein I, Bertario L, Blanco I, Burn J, Capella G, Engel C, Frayling I, Friedl W, Hes FJ, Hodgson S, Mecklin JP, Moller P, Nagengast F, Parc Y, Renkonen-Sinisalo L, Sampson JR, Stormorken A, Wijnen J. Guidelines for the clinical management of Lynch syndrome (hereditary non-polyposis cancer). *J Med Genet* 2007 Jun;**44**(6):353-62.
 - (12) Watson P, Vasen HF, Mecklin JP, Bernstein I, Aarnio M, Jarvinen HJ, Myrhoj T, Sunde L, Wijnen JT, Lynch HT. The risk of extra-colonic, extra-endometrial cancer in the Lynch syndrome. *Int J Cancer* 2008 Jul 15;**123**(2):444-9.
 - (13) Aarnio M, Sankila R, Pukkala E, Salovaara R, Aaltonen LA, de la Chapelle A, Peltomaki P, Mecklin JP, Jarvinen HJ. Cancer risk in mutation carriers of DNA-mismatch-repair genes. *Int J Cancer* 1999 Apr 12;**81**(2):214-8.
 - (14) Maul JS, Warner NR, Kuwada SK, Burt RW, Cannon-Albright LA. Extracolonic cancers associated with hereditary nonpolyposis colorectal cancer in the Utah Population Database. *Am J Gastroenterol* 2006 Jul;**101**(7):1591-6.

- (15) Parc Y, Boisson C, Thomas G, Olschwang S. Cancer risk in 348 French MSH2 or MLH1 gene carriers. *J Med Genet* 2003 Mar;**40**(3):208-13.
- (16) Geary J, Sasieni P, Houlston R, Izatt L, Eeles R, Payne SJ, Fisher S, Hodgson SV. Gene-related cancer spectrum in families with hereditary non-polyposis colorectal cancer (HNPCC). *Fam Cancer* 2008;**7**(2):163-72.
- (17) Lin KM, Shashidharan M, Thorson AG, Ternent CA, Blatchford GJ, Christensen MA, Watson P, Lemon SJ, Franklin B, Karr B, Lynch J, Lynch HT. Cumulative incidence of colorectal and extracolonic cancers in MLH1 and MSH2 mutation carriers of hereditary nonpolyposis colorectal cancer. *J Gastrointest Surg* 1998 Jan;**2**(1):67-71.
- (18) Bermejo JL, Eng C, Hemminki K. Cancer characteristics in Swedish families fulfilling criteria for hereditary nonpolyposis colorectal cancer. *Gastroenterology* 2005 Dec;**129**(6):1889-99.
- (19) Gylling AH, Nieminen TT, Abdel-Rahman WM, Nuorva K, Juhola M, Joensuu EI, Jarvinen HJ, Mecklin JP, Aarnio M, Peltomaki PT. Differential cancer predisposition in Lynch syndrome: insights from molecular analysis of brain and urinary tract tumors. *Carcinogenesis* 2008 Jul;**29**(7):1351-9.
- (20) Hartmann A, Zanardo L, Bocker-Edmonston T, Blaszyk H, Dietmaier W, Stoehr R, Chevillet JC, Junker K, Wieland W, Knuechel R, Rueschoff J, Hofstaedter F, Fishel R. Frequent microsatellite instability in sporadic tumors of the upper urinary tract. *Cancer Res* 2002 Dec 1;**62**(23):6796-802.
- (21) Umar A, Boland CR, Terdiman JP, Syngal S, de la Chapelle A, Ruschoff J, Fishel R, Lindor NM, Burgart LJ, Hamelin R, Hamilton SR, Hiatt RA, Jass J, Lindblom A, Lynch HT, Peltomaki P, Ramsey SD, Rodriguez-Bigas MA, Vasen HF, Hawk ET, Barrett JC, Freedman AN, Srivastava S. Revised Bethesda Guidelines for hereditary nonpolyposis colorectal cancer (Lynch syndrome) and microsatellite instability. *J Natl Cancer Inst* 2004 Feb 18;**96**(4):261-8.
- (22) Kiemenev LA, Lemmers FA, Verhoeven RH, Aben KK, Honing C, de NJ, Peeters PH, Visser O, Vlems FA. [The risk of cancer in the Netherlands]. *Ned Tijdschr Geneesk* 2008 Oct 11;**152**(41):2233-41.
- (23) Kets CM, van Krieken JH, Hebeda KM, Wezenberg SJ, Goossens M, Brunner HG, Ligtenberg MJ, Hoogerbrugge N. Very low prevalence of germline MSH6 mutations in hereditary non-polyposis colorectal cancer suspected patients with colorectal cancer without microsatellite instability. *Br J Cancer* 2006 Dec 18;**95**(12):1678-82.
- (24) de Jong AE, van PM, Hendriks Y, Tops C, Wijnen J, Ausems MG, Meijers-Heijboer H, Wagner A, van Os TA, Bocker-Vriends AH, Vasen HF, Morreau H. Microsatellite instability, immunohistochemistry, and additional PMS2 staining in suspected hereditary nonpolyposis colorectal cancer. *Clin Cancer Res* 2004 Feb 1;**10**(3):972-80.
- (25) Overbeek LI, Ligtenberg MJ, Willems RW, Hermens RP, Blokk WA, Dubois SV, van der Linden H, Meijer JW, Mlynec-Kersjes ML, Hoogerbrugge N, Hebeda KM, van Krieken JH. Interpretation of immunohistochemistry for mismatch repair proteins is only reliable in a specialized setting. *Am J Surg Pathol* 2008 Aug;**32**(8):1246-51.
- (26) Jarvinen HJ, Aarnio M, Mustonen H, Aktan-Collan K, Aaltonen LA, Peltomaki P, de la Chapelle A, Mecklin JP. Controlled 15-year trial on screening for colorectal cancer in families with hereditary nonpolyposis colorectal cancer. *Gastroenterology* 2000 May;**118**(5):829-34.
- (27) Vasen HF, Watson P, Mecklin JP, Lynch HT. New clinical criteria for hereditary nonpolyposis colorectal cancer (HNPCC, Lynch syndrome) proposed by the International Collaborative group on HNPCC. *Gastroenterology* 1999 Jun;**116**(6):1453-6.
- (28) Plaschke J, Engel C, Kruger S, Holinski-Feder E, Pagenstecher C, Mangold E, Moeslein G, Schulmann K, Gebert J, von Knebel DM, Ruschoff J, Loeffler M, Schackert HK. Lower

incidence of colorectal cancer and later age of disease onset in 27 families with pathogenic MSH6 germline mutations compared with families with MLH1 or MSH2 mutations: the German Hereditary Nonpolyposis Colorectal Cancer Consortium. *J Clin Oncol* 2004 Nov 15;**22**(22):4486-94.

- (29) Hampel H, Stephens JA, Pukkala E, Sankila R, Aaltonen LA, Mecklin JP, de la Chapelle A. Cancer risk in hereditary nonpolyposis colorectal cancer syndrome: later age of onset. *Gastroenterology* 2005 Aug;**129**(2):415-21.
- (30) Lindor NM, Petersen GM, Hadley DW, Kinney AY, Miesfeldt S, Lu KH, Lynch P, Burke W, Press N. Recommendations for the care of individuals with an inherited predisposition to Lynch syndrome: a systematic review. *JAMA* 2006 Sep 27;**296**(12):1507-17.
- (31) Lokeshwar VB, Habuchi T, Grossman HB, Murphy WM, Hautmann SH, Hemstreet GP, III, Bono AV, Getzenberg RH, Goebell P, Schmitz-Drager BJ, Schalken JA, Fradet Y, Marberger M, Messing E, Droller MJ. Bladder tumor markers beyond cytology: International Consensus Panel on bladder tumor markers. *Urology* 2005 Dec;**66**(6 Suppl 1):35-63.
- (32) Myrhoj T, Andersen MB, Bernstein I. Screening for urinary tract cancer with urine cytology in Lynch syndrome and familial colorectal cancer. *Fam Cancer* 2008;**7**(4):303-7.
- (33) Wakui M, Shiigai T. Urinary tract cancer screening through analysis of urinary red blood cell volume distribution. *Int J Urol* 2000 Jul;**7**(7):248-53.
- (34) Koornstra JJ, Mourits MJ, Sijmons RH, Leliveld AM, Hollema H, Kleibeuker JH. Management of extracolonic tumours in patients with Lynch syndrome. *Lancet Oncol* 2009 Apr;**10**(4):400-8.
- (35) Hirata K, Kanemitsu S, Nakayama Y, Nagata N, Itoh H, Ohnishi H, Ishikawa H, Furukawa Y. A novel germline mutation of MSH2 in a hereditary nonpolyposis colorectal cancer patient with liposarcoma. *Am J Gastroenterol* 2006 Jan;**101**(1):193-6.

Acknowledgement

We would like to thank Irene Reimerink and Marsha Voorendt (genetic counselors), Dr Ernie Bongers (clinical geneticist), Riki Willems, Monique Link, Monique Goossens, Sandra Hendriks-Cornelissen and Evelien Hoenselaar (technical assistance).

The Corresponding Author has the right to grant on behalf of all authors and does grant on behalf of all authors, an exclusive licence (or non-exclusive for government employees) on a worldwide basis to the BMJ Publishing Group Ltd and its Licensees to permit this article (if accepted) to be published in *Journal of Medical Genetics* and any other BMJ PGL products to exploit all subsidiary rights, as set out in our licence.

Competing Interest: None to declare

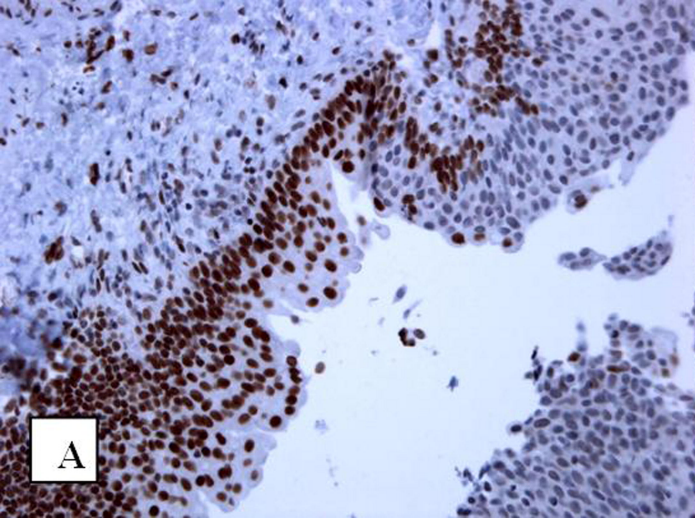
Ethics Committee approval: this is not an intervention study with human subjects; no approval of the Ethics Committee was obtained

Legends to figures

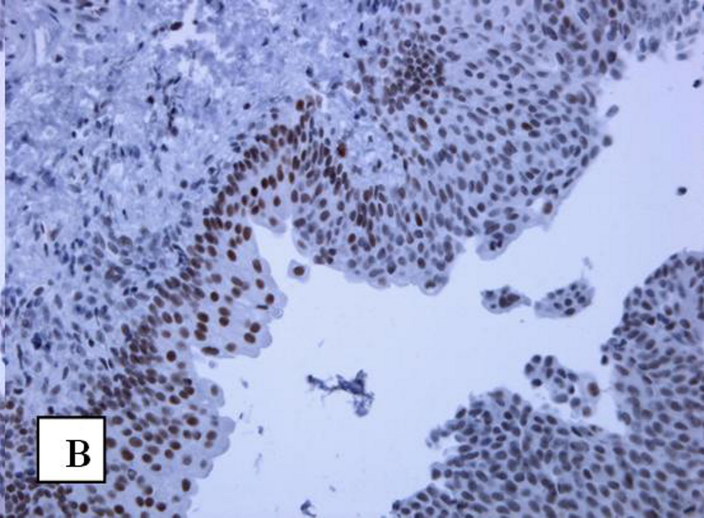
Figure 1 Absence of nuclear immunohistochemical staining of MLH1 protein (A) and presence of MSH2 protein (B) in UC of the urinary bladder (original magnifications, 250x) of a patient carrying a germline *MLH1* mutation. Note in figure 1A the presence of nuclear staining in normal mucosa and absence in carcinoma.

Figure 2 Absence of nuclear immunohistochemical staining of MSH2 protein (A) and presence of MLH1 protein (B) in urothelial cell carcinoma of the urinary bladder (original magnifications, 400x) of a patient carrying a germline *MSH2* mutation. Observe the nuclear staining in stromal cells as an internal control.

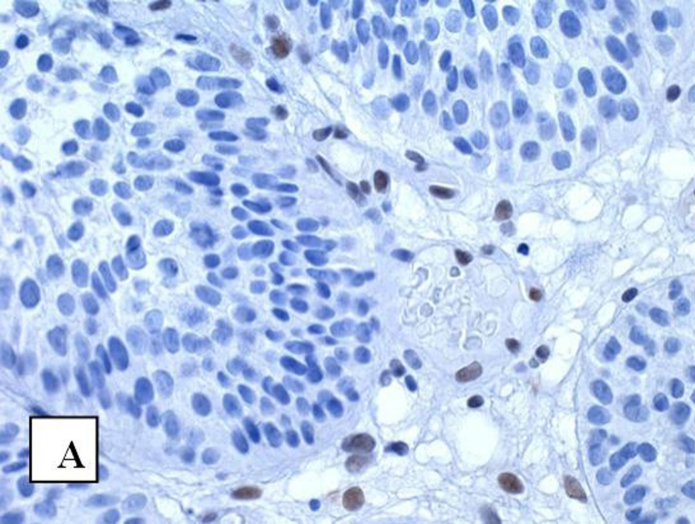
Figure 3 Pedigree of a Lynch syndrome family with two *MSH2* mutation carriers with urinary bladder cancer.



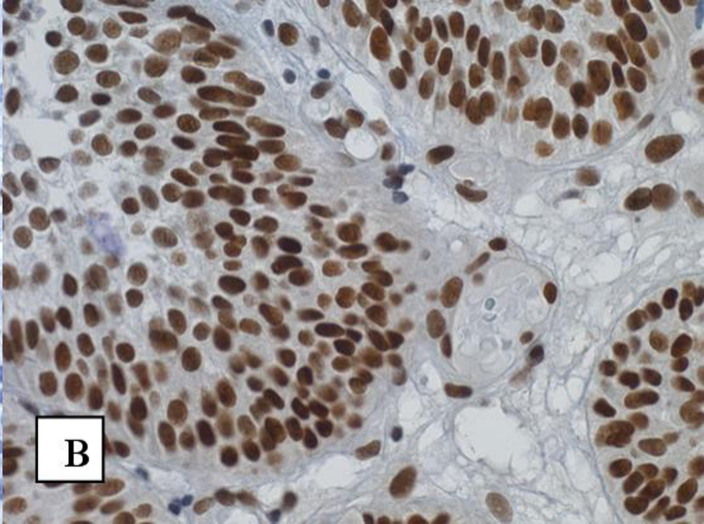
A



B



A



B

