



**HAL**  
open science

## **A recombinant trispecific single-chain Fv derivative directed against CD123 and CD33 mediates effective elimination of acute myeloid leukaemia cells by dual targeting**

Markus Kügler, Christoph Stein, Christian Kellner, Kristin Mentz, Domenica Saul, Michael Schwenkert, Ingo Schubert, Heiko Singer, Fuat Oduncu, Bernard Stockmeyer, et al.

### ► **To cite this version:**

Markus Kügler, Christoph Stein, Christian Kellner, Kristin Mentz, Domenica Saul, et al.. A recombinant trispecific single-chain Fv derivative directed against CD123 and CD33 mediates effective elimination of acute myeloid leukaemia cells by dual targeting. *British Journal of Haematology*, 2010, 150 (5), pp.574. 10.1111/j.1365-2141.2010.08300.x . hal-00556388

**HAL Id: hal-00556388**

**<https://hal.science/hal-00556388>**

Submitted on 16 Jan 2011

**HAL** is a multi-disciplinary open access archive for the deposit and dissemination of scientific research documents, whether they are published or not. The documents may come from teaching and research institutions in France or abroad, or from public or private research centers.

L'archive ouverte pluridisciplinaire **HAL**, est destinée au dépôt et à la diffusion de documents scientifiques de niveau recherche, publiés ou non, émanant des établissements d'enseignement et de recherche français ou étrangers, des laboratoires publics ou privés.



**A recombinant trispecific single-chain Fv derivative directed against CD123 and CD33 mediates effective elimination of acute myeloid leukaemia cells by dual targeting**

Journal:	<i>British Journal of Haematology</i>
Manuscript ID:	BJH-2010-00662.R1
Manuscript Type:	Ordinary Papers
Date Submitted by the Author:	28-May-2010
Complete List of Authors:	Kügler, Markus; University of Erlangen-Nuremberg, Chair of Genetics Stein, Christoph; University of Erlangen-Nuremberg, Chair of Genetics Kellner, Christian; University of Schleswig-Holstein, Section of Stem cell Transplantation and Immunotherapy, University Medical Center Mentz, Kristin; University of Erlangen-Nuremberg, Chair of Genetics Saul, Domenica; University of Erlangen-Nuremberg, Chair of Genetics Schwenkert, Michael; University of Erlangen-Nuremberg, Chair of Genetics Schubert, Ingo; University of Erlangen-Nuremberg, Chair of Genetics Singer, Heiko; University of Erlangen-Nuremberg, Chair of Genetics Oduncu, Fuat; University Hospital Munich, Campus Innenstadt - Medizinische Klinik, Division Hematology/Oncology Stockmeyer, Bernard; University Hospital Erlangen, Department of Medicine 5, Division Of Haematology/Oncology Mackensen, Anreas; University Hospital Erlangen, Department of Medicine 5, Division Of Haematology/Oncology Fey, G; University of Erlangen-Nuremberg, Chair of Genetics
Key Words:	CD33, CD123, dual targeting, leukaemia stem cell, single-chain Fv triplebody

1  
2  
3 **A recombinant trispecific single-chain Fv derivative directed against CD123**  
4  
5  
6 **and CD33 mediates effective elimination of acute myeloid leukaemia cells**  
7  
8  
9 **by dual targeting**  
10  
11  
12  
13

14  
15 **Markus Kügler,<sup>1,\*</sup> Christoph Stein,<sup>1,\*</sup> Christian Kellner,<sup>2</sup> Kristin Mentz,<sup>1</sup> Domenica**  
16  
17 **Saul,<sup>1</sup> Michael Schwenkert,<sup>1</sup> Ingo Schubert,<sup>1</sup> Heiko Singer,<sup>1</sup> Fuat Oduncu,<sup>3</sup> Bernhard**  
18  
19 **Stockmeyer,<sup>4</sup> Andreas Mackensen<sup>4</sup> and Georg H. Fey<sup>1</sup>**  
20  
21

22  
23 <sup>1</sup>Chair of Genetics, University of Erlangen-Nuremberg, Erlangen, <sup>2</sup>Section of Stem cell  
24 Transplantation and Immunotherapy, University Medical Center, University of Schleswig-  
25 Holstein, Kiel, <sup>3</sup>Campus Innenstadt - Medizinische Klinik, Division Hematology/Oncology,  
26 University Hospital Munich, Munich, <sup>4</sup>Department of Internal Medicine 5,  
27 Hematology/Oncology, University of Erlangen-Nuremberg, Erlangen  
28  
29

30  
31 \*These authors contributed equally to this study.  
32  
33

34  
35 This research was supported by grants from the DFG (Deutsche Forschungsgemeinschaft;  
36 German Research Community) to GHF and AM, a student fellowship from Bayerische  
37 Eliteförderung (Bavarian Scholarship Foundation) to CS, postdoctoral/PhD fellowships from  
38 the German José-Carreras Leukemia-Foundation to MS and IS, a research grant No.  
39 2007.049.1 from the Wilhelm Sander Foundation, Neustadt, Germany to GHF and BS, and  
40 support from the Stiftung Deutsche Krebshilfe, the Beitlich Foundation, Tübingen, and the  
41 Association "Kaminkehrer helfen krebserkrankten Kindern" (Chimney Sweeps support children  
42 with cancer) to GHF. Part of this work was funded by an intramural grant from the ELAN  
43 fond and the Training Grant GK592 from the German Research Community (DFG).  
44  
45  
46  
47  
48  
49  
50  
51

52 **Running title:** CD123-, CD33- and CD16-directed trispecific single-chain Fv fragment  
53

54 **Keywords:** CD33, CD123, dual targeting, leukaemia stem cell, single-chain Fv triplebody  
55

56 **Corresponding author:** Christoph Stein, Chair of Genetics, University of Erlangen-  
57 Nuremberg, Staudtstraße 5, D-91058 Erlangen, Germany; E-mail: cstein@biologie.uni-  
58 erlangen.de  
59  
60

## Summary

Two trivalent constructs consisting of single-chain Fv antibody fragments (scFvs) specific for the interleukin-3 receptor  $\alpha$  chain (CD123), CD33 and the Fc $\gamma$ -receptor III (CD16) were designed and characterized for the elimination of acute myeloid leukaemia (AML) cells. The dual targeting single-chain Fv triplebody (sctb) [123 x ds16 x 33] and the mono targeting sctb [123 x ds16 x 123] both specifically bound their respective target antigens and were stable in human serum at 37°C for at least 5 days. Both constructs induced potent antibody-dependent cellular cytotoxicity (ADCC) of two different AML-derived CD33- and CD123 double-positive cell lines in the low picomolar range using isolated mononuclear cells (MNCs) as effector cells. In these experiments the dual targeting molecule produced significantly stronger lysis than the mono targeting agent. In addition, the sctbs showed a high potency in mediating ADCC of primary leukaemia cells isolated from peripheral blood or bone marrow of seven AML patients. Hence, these novel molecules displayed potent anti-leukaemic effects against AML cells *in vitro* and represent attractive candidates for further preclinical development.

## Introduction

Acute myeloid leukaemia (AML) is a haematopoietic malignancy characterized by a block in cell maturation and an accumulation of undifferentiated blasts in the bone marrow and peripheral blood (Lowenberg *et al*, 2003, Hiddemann *et al*, 2005). AML is commonly treated with an induction chemotherapy, followed by a consolidation therapy and sometimes maintenance therapy (Buchner *et al*, 2005, Robak and Wierzbowska 2009). As a postremission therapy, autologous or allogeneic bone marrow transplantation can be performed in selected patients (Shipley and Butera 2009). For patients in first relapse older than 60 years and for patients resistant to standard chemotherapy, the immunoconjugate Gemtuzumab Ozogamicin (GO) is approved by the Food and Drug Administration (FDA) (Bross *et al*, 2001, Sievers 2001). GO is a CD33-specific antibody chemically coupled to the cytotoxic drug calicheamicin (Sievers *et al*, 1999, Stasi 2008). CD33, a 67-kDa transmembrane cell surface glycoprotein specific for the myeloid lineage, is not expressed on non-haematopoietic tissue but is expressed on a subset of normal haematopoietic stem cells (HSCs) and on AML leukaemia stem cells (AML-LSCs; Freeman *et al*, 1995, Taussig *et al*, 2005, Hauswirth *et al*, 2007). In a phase II clinical trial, 30% of relapsed AML patients responded to GO, but severe side-effects were observed (Sievers 2001, Larson *et al*, 2002). In a recent European multicenter phase III study, GO was found to provide no benefit when administered as a post-remission therapeutic agent to older patients (Lowenberg *et al*, 2010), and the drug is not approved in Europe. Furthermore, the agent displayed antigen-independent cytotoxicities towards CD33 negative cell lines (Bross *et al*, 2001, Jedema *et al*, 2004, Schwemmlin *et al*, 2006). Despite of these problems GO clearly produces clinical benefits for a subgroup of AML patients, and CD33 is a validated target antigen. Still, new therapeutic modalities with fewer toxicities are urgently needed for the treatment of AML (Estey and Dohner 2006). Another important AML-associated antigen is CD123, the alpha subunit of the interleukin-3 receptor (IL-3R $\alpha$ ), which is predominantly expressed on myeloid cells and on a

1  
2  
3 subpopulation of B-lymphocytes. It is not expressed on platelets, red blood cells, natural killer  
4  
5 cells (NK cells), peripheral T-cells (Moretti *et al*, 2001) and only in low density on HSCs  
6  
7 (Huang *et al*, 1999, Jin *et al*, 2009). However, CD123 has been detected in a variety of  
8  
9 haematopoietic malignancies and on AML-LSCs (Jordan *et al*, 2000, Munoz *et al*, 2001,  
10  
11 Testa *et al*, 2002, Taussig *et al*, 2005). Strikingly, CD123 shows a 4-fold increased expression  
12  
13 on AML-LSCs over normal HSCs (Jin *et al*, 2009). This finding together with the clinical  
14  
15 observations, that elevated expression of CD123 in AML is associated with higher blast  
16  
17 counts at diagnosis and a lower complete remission rate resulting in poorer prognosis (Testa  
18  
19 *et al*, 2002, Graf *et al*, 2004, Testa *et al*, 2004) make CD123 a particularly interesting target  
20  
21 for antibody-derived therapeutics (Jin *et al*, 2009).  
22  
23  
24  
25

26  
27 AML-LSCs are known to possess several remarkable properties including self-renewal  
28  
29 potential and increased resistance against chemotherapeutics and DNA damage (Lapidot *et al*,  
30  
31 1994, Bonnet and Dick 1997, Guan and Hogge 2000, Guzman *et al*, 2001, Hope *et al*, 2004,  
32  
33 Ishikawa *et al*, 2007, Dick 2008). This unique cell population is thought to play a key role in  
34  
35 the frequent occurrence of minimal residual disease (MRD) in relapsed AML patients after  
36  
37 conventional chemotherapy (van Rhenen *et al*, 2005, Ravandi and Estrov 2006). Hence, after  
38  
39 the discovery of AML-LSCs a great amount of effort has been spent to investigate the surface  
40  
41 antigen profile of this clinically relevant cell population to identify suitable markers for their  
42  
43 targeted elimination (Jordan *et al*, 2000, Taussig *et al*, 2005, Jin *et al*, 2006, Hosen *et al*,  
44  
45 2007, Jin *et al*, 2009). The fact that both antigens, CD33 and CD123, are expressed on AML-  
46  
47 LSCs offers novel prospects for the treatment of AML. So far an immunotoxin (Du *et al*,  
48  
49 2007), a fusion of IL-3 with a truncated version of diphtheria toxin (Feuring-Buske *et al*,  
50  
51 2002, Frankel *et al*, 2008), a neutralizing full-length antibody (7G3; Jin *et al*, 2009), and a  
52  
53 **bispecific single-chain Fv (bscFv; Stein *et al*, 2010)** directed against CD123 have been  
54  
55 described, and the monoclonal antibody 7G3 has been tested in a phase I clinical study  
56  
57  
58  
59  
60 (Roberts *et al*, 2008; <http://clinicaltrials.gov/ct2/show/NCT00401739?term=CSL360&rank=1>).

1  
2  
3 Well-studied antibody-derived agents directed against CD33 include apart from GO an  
4 immunotoxin (Schwemmlin *et al*, 2006), a fusion protein between a single chain Fv antibody  
5 fragment (scFv) and the sTRAIL death receptor ligand (ten Cate *et al*, 2009), and siRNA-  
6  
7  
8  
9  
10 loaded liposomes coated with CD33-directed scFvs (Rothdiener *et al*, 2010).

11  
12 **BsscFvs** have advantageous properties over full-length bispecific antibodies and chemically  
13 coupled bispecific Fragment antibody binding (Fab) fragments, and have recently produced  
14 convincing therapeutic effects in clinical trials (Bargou *et al*, 2008). To overcome some of the  
15 remaining weaknesses of this format, such as an unfavorable plasma retention, the format has  
16  
17  
18  
19  
20  
21  
22 been further improved by expanding it to tandem diabodies (Kipriyanov *et al*, 1999) and  
23  
24  
25 single-chain triplebodies (sctbs; Kellner *et al*, 2008). The incorporation of a second scFv-  
26  
27 binding site for tumour-antigens in these extended formats has led to increased avidity for the  
28  
29  
30  
31  
32  
33  
34  
35  
36  
37  
38  
39  
40  
41  
42  
43  
44  
45  
46  
47  
48  
49  
50  
51  
52  
53  
54  
55  
56  
57  
58  
59  
60  
61  
62  
63  
64  
65  
66  
67  
68  
69  
70  
71  
72  
73  
74  
75  
76  
77  
78  
79  
80  
81  
82  
83  
84  
85  
86  
87  
88  
89  
90  
91  
92  
93  
94  
95  
96  
97  
98  
99  
100  
101  
102  
103  
104  
105  
106  
107  
108  
109  
110  
111  
112  
113  
114  
115  
116  
117  
118  
119  
120  
121  
122  
123  
124  
125  
126  
127  
128  
129  
130  
131  
132  
133  
134  
135  
136  
137  
138  
139  
140  
141  
142  
143  
144  
145  
146  
147  
148  
149  
150  
151  
152  
153  
154  
155  
156  
157  
158  
159  
160  
161  
162  
163  
164  
165  
166  
167  
168  
169  
170  
171  
172  
173  
174  
175  
176  
177  
178  
179  
180  
181  
182  
183  
184  
185  
186  
187  
188  
189  
190  
191  
192  
193  
194  
195  
196  
197  
198  
199  
200  
201  
202  
203  
204  
205  
206  
207  
208  
209  
210  
211  
212  
213  
214  
215  
216  
217  
218  
219  
220  
221  
222  
223  
224  
225  
226  
227  
228  
229  
230  
231  
232  
233  
234  
235  
236  
237  
238  
239  
240  
241  
242  
243  
244  
245  
246  
247  
248  
249  
250  
251  
252  
253  
254  
255  
256  
257  
258  
259  
260  
261  
262  
263  
264  
265  
266  
267  
268  
269  
270  
271  
272  
273  
274  
275  
276  
277  
278  
279  
280  
281  
282  
283  
284  
285  
286  
287  
288  
289  
290  
291  
292  
293  
294  
295  
296  
297  
298  
299  
300  
301  
302  
303  
304  
305  
306  
307  
308  
309  
310  
311  
312  
313  
314  
315  
316  
317  
318  
319  
320  
321  
322  
323  
324  
325  
326  
327  
328  
329  
330  
331  
332  
333  
334  
335  
336  
337  
338  
339  
340  
341  
342  
343  
344  
345  
346  
347  
348  
349  
350  
351  
352  
353  
354  
355  
356  
357  
358  
359  
360  
361  
362  
363  
364  
365  
366  
367  
368  
369  
370  
371  
372  
373  
374  
375  
376  
377  
378  
379  
380  
381  
382  
383  
384  
385  
386  
387  
388  
389  
390  
391  
392  
393  
394  
395  
396  
397  
398  
399  
400  
401  
402  
403  
404  
405  
406  
407  
408  
409  
410  
411  
412  
413  
414  
415  
416  
417  
418  
419  
420  
421  
422  
423  
424  
425  
426  
427  
428  
429  
430  
431  
432  
433  
434  
435  
436  
437  
438  
439  
440  
441  
442  
443  
444  
445  
446  
447  
448  
449  
450  
451  
452  
453  
454  
455  
456  
457  
458  
459  
460  
461  
462  
463  
464  
465  
466  
467  
468  
469  
470  
471  
472  
473  
474  
475  
476  
477  
478  
479  
480  
481  
482  
483  
484  
485  
486  
487  
488  
489  
490  
491  
492  
493  
494  
495  
496  
497  
498  
499  
500  
501  
502  
503  
504  
505  
506  
507  
508  
509  
510  
511  
512  
513  
514  
515  
516  
517  
518  
519  
520  
521  
522  
523  
524  
525  
526  
527  
528  
529  
530  
531  
532  
533  
534  
535  
536  
537  
538  
539  
540  
541  
542  
543  
544  
545  
546  
547  
548  
549  
550  
551  
552  
553  
554  
555  
556  
557  
558  
559  
560  
561  
562  
563  
564  
565  
566  
567  
568  
569  
570  
571  
572  
573  
574  
575  
576  
577  
578  
579  
580  
581  
582  
583  
584  
585  
586  
587  
588  
589  
590  
591  
592  
593  
594  
595  
596  
597  
598  
599  
600  
601  
602  
603  
604  
605  
606  
607  
608  
609  
610  
611  
612  
613  
614  
615  
616  
617  
618  
619  
620  
621  
622  
623  
624  
625  
626  
627  
628  
629  
630  
631  
632  
633  
634  
635  
636  
637  
638  
639  
640  
641  
642  
643  
644  
645  
646  
647  
648  
649  
650  
651  
652  
653  
654  
655  
656  
657  
658  
659  
660  
661  
662  
663  
664  
665  
666  
667  
668  
669  
670  
671  
672  
673  
674  
675  
676  
677  
678  
679  
680  
681  
682  
683  
684  
685  
686  
687  
688  
689  
690  
691  
692  
693  
694  
695  
696  
697  
698  
699  
700  
701  
702  
703  
704  
705  
706  
707  
708  
709  
710  
711  
712  
713  
714  
715  
716  
717  
718  
719  
720  
721  
722  
723  
724  
725  
726  
727  
728  
729  
730  
731  
732  
733  
734  
735  
736  
737  
738  
739  
740  
741  
742  
743  
744  
745  
746  
747  
748  
749  
750  
751  
752  
753  
754  
755  
756  
757  
758  
759  
760  
761  
762  
763  
764  
765  
766  
767  
768  
769  
770  
771  
772  
773  
774  
775  
776  
777  
778  
779  
780  
781  
782  
783  
784  
785  
786  
787  
788  
789  
790  
791  
792  
793  
794  
795  
796  
797  
798  
799  
800  
801  
802  
803  
804  
805  
806  
807  
808  
809  
810  
811  
812  
813  
814  
815  
816  
817  
818  
819  
820  
821  
822  
823  
824  
825  
826  
827  
828  
829  
830  
831  
832  
833  
834  
835  
836  
837  
838  
839  
840  
841  
842  
843  
844  
845  
846  
847  
848  
849  
850  
851  
852  
853  
854  
855  
856  
857  
858  
859  
860  
861  
862  
863  
864  
865  
866  
867  
868  
869  
870  
871  
872  
873  
874  
875  
876  
877  
878  
879  
880  
881  
882  
883  
884  
885  
886  
887  
888  
889  
890  
891  
892  
893  
894  
895  
896  
897  
898  
899  
900  
901  
902  
903  
904  
905  
906  
907  
908  
909  
910  
911  
912  
913  
914  
915  
916  
917  
918  
919  
920  
921  
922  
923  
924  
925  
926  
927  
928  
929  
930  
931  
932  
933  
934  
935  
936  
937  
938  
939  
940  
941  
942  
943  
944  
945  
946  
947  
948  
949  
950  
951  
952  
953  
954  
955  
956  
957  
958  
959  
960  
961  
962  
963  
964  
965  
966  
967  
968  
969  
970  
971  
972  
973  
974  
975  
976  
977  
978  
979  
980  
981  
982  
983  
984  
985  
986  
987  
988  
989  
990  
991  
992  
993  
994  
995  
996  
997  
998  
999  
1000

BsscFvs have advantageous properties over full-length bispecific antibodies and chemically coupled bispecific Fragment antibody binding (Fab) fragments, and have recently produced convincing therapeutic effects in clinical trials (Bargou *et al*, 2008). To overcome some of the remaining weaknesses of this format, such as an unfavorable plasma retention, the format has been further improved by expanding it to tandem diabodies (Kipriyanov *et al*, 1999) and single-chain triplebodies (sctbs; Kellner *et al*, 2008). The incorporation of a second scFv-binding site for tumour-antigens in these extended formats has led to increased avidity for the tumour cell, increased anti-tumour activity in antibody dependent cellular cytotoxicity (ADCC) reactions, and improved plasma retention *in vivo* (Kellner *et al*, 2008). An example for a sctb with improved ADCC activity for AML cells is the sctb [33 x ds16 x 33] (Singer *et al*, 2010) with two scFv antigen binding sites for CD33 on AML cells and one for CD16, the low affinity Fcγ RIII receptor for IgG on NK cells and macrophages (Ravetch and Perussia 1989, Daeron 1997). In a direct comparison, this sctb showed increased anti-leukaemic activity for AML cells over the corresponding bsscFv [33 x ds16] with only one binding site each for CD33 and CD16. Before these trivalent single-polypeptide formats, other trispecific antibody derivatives had been explored. One example was a trispecific Fab construct, consisting of three chemically coupled Fab-fragments (Somasundaram *et al*, 1999). A second trispecific construct was called a "tri-body", a two-chain polypeptide based on a Fab fragment as scaffold (Schoonjans *et al*, 2001). Two scFvs were fused to the C-termini of the L- and Fd-chains of this Fab, respectively. Finally, a trispecific molecule based on a VH domain has been reported, which carried two scFvs fused to a VH-domain (Song *et al*, 2003).

1  
2  
3 The key molecule presented here, the sctb [123 x ds16 x 33], differs significantly in its design  
4 from all of these examples. It is a single-chain polypeptide with only one binding site for an  
5 effector cell and two for two different tumour antigens, CD123 and CD33. The goal of this  
6 design was to achieve improved anti-leukaemic activity by "dual targeting" of the tumour cell,  
7 i.e. by simultaneous binding to two different antigens on the same tumour cell. We expected  
8 this molecule to bind with greater avidity to CD123 and CD33 on double-positive AML cells  
9 than the corresponding control sctbs [123 x ds16 x 123] and [33 x ds16 x 33], because it  
10 would take advantage of two populations of target antigens rather than only one. Based on  
11 theoretical arguments, the avidity of such proteins was expected to be proportional to the  
12 combined target antigen density on the tumour cell (Mattes 1997, Pluckthun and Pack 1997).

13  
14  
15  
16  
17  
18  
19  
20  
21  
22  
23  
24  
25  
26  
27 The prediction of added benefits by dual- over mono-specific targeting of tumour cells is  
28 intuitively appealing, and has been pursued for a number of years (Robinson *et al*, 2008), but  
29 has not yet been conclusively proven for scFv-derived agents recruiting effector cells. A  
30 definitive proof of this prediction is experimentally demanding and is still under investigation.  
31  
32  
33  
34  
35  
36  
37  
38  
39  
40  
41  
42  
43  
44  
45  
46  
47  
48  
49  
50  
51  
52  
53  
54  
55  
56  
57  
58  
59  
60  
The molecules presented here provide an opportunity to directly  
evaluate the benefits of dual over mono-specific targeting for AML cells. Finally, they  
provide new means to test the prediction that dual targeting a combination of two antigens,  
which are more highly expressed on AML-LSCs than on HSCs, may permit the preferential  
elimination of AML-LSCs. It would be important to test this prediction, because if confirmed  
it would provide a possibility for a deliberate attack on the LSCs with the intent to eliminate  
MRD cells and prevent relapse, while preserving some HSCs for haematopoietic recon-  
stitution after the end of treatment, without the need for autologous stem cell transplantation.  
The molecules presented here provide first steps towards these important goals of rational  
leukaemia therapy.



## Materials and Methods

### Cell lines and hybridomas

The human AML cell lines MOLM-13, THP-1 (t(9;11)(p22;q23), expressing *MLL-MLLT3*) and U937 were from the German Collection of Microorganisms and Cell Cultures (DSMZ, Braunschweig, Germany). Chinese hamster ovary (CHO) cells, stably transfected with a human CD16 cDNA expression vector, were provided by Dr. J. van de Winkel (University of Utrecht, the Netherlands). The hybridoma 3G8; FcγRIII, CD16; IgG1, (Fleit *et al*, 1982) and the human 293T and 293 cells were from the American Type Cell Culture Collection (ATCC, Manassas, VA, USA). The 4G7 hybridoma (CD19; IgG1) was from Dr R. Levy (Stanford University, Palo Alto, CA;(Meeker *et al*, 1984). CHO, THP-1, U937 and the 3G8 hybridoma cells were cultured in Roswell Park Memorial Institute (RPMI) 1640 Glutamax-I medium (Invitrogen, Karlsruhe, Germany) containing 10% fetal calf serum (FCS; Invitrogen), 100 units/ml penicillin (Invitrogen), and 100 µg/ml streptomycin (Invitrogen). MOLM-13 cells were cultured in RPMI 1640 Glutamax-I medium containing 20% FCS, 100 units/ml penicillin and 100 µg/ml streptomycin (Invitrogen). Human 293, 293T and 293 cells stably transfected with CD123 (Stein *et al.*, 2010) were maintained in DMEM (Invitrogen) Glutamax-I medium containing 10% FCS, 100 units/ml penicillin and 100 µg/ml streptomycin (Invitrogen). The medium for the CD123 expressing cells further contained 400 µg/ml Geneticin (Invitrogen).

### Construction of scTbs [123 x ds16 x 33] and [123 x ds16 x 123]

*Escherichia coli* strain XL-1 blue (Stratagene, Amsterdam, The Netherlands) was used as host for the amplification of plasmids and cloning. For the construction of the scTb [123 x ds16 x 33] expression vector the sequence coding for the CD123-specific scFv was excised from the vector pAK400-CD123scFv (Stein *et al*, 2010) and cloned as a SfiI-cassette into the existing vector pSecTag2HygroC-STREP-His-CD33xdsCD16xCD33 (Singer *et al*, 2010) replacing

1  
2  
3 the coding sequence for the N-terminal CD33-specific scFv. Thereby the vector  
4  
5 pSecTag2HygroC-STREP-His-CD123xdsCD16xCD33 was produced. In these constructs, the  
6  
7 index ds designates the disulfide-stabilized variants (Bruenke *et al*, 2004). To generate the  
8  
9 vector pSecTag2HygroC-STREP-His-CD123xdsCD16xCD123, the sequence coding for the  
10  
11 CD123-specific scFv was amplified by PCR from the vector pAK400-CD123scFv and ligated  
12  
13 into pSecTag2HygroC-STREP-His-CD123xdsCD16xCD33, using XhoI/EcoRV restriction  
14  
15 sites, and replacing the coding sequence for the C-terminal CD33-specific scFv. For  
16  
17 construction of the expression vector pSecTag2HygroC-hCD123ex-DsRed, cDNA coding for  
18  
19 the extracellular domain of CD123 was amplified by PCR using the existing vector  
20  
21 pSecTag2HygroC-hCD123ex-Fc (Stein *et al*, 2010) and ligated into the vector  
22  
23 pSecTag2HygroC-CD33ex-DsRed (Singer *et al*, 2010), replacing the extracellular domain of  
24  
25 CD33. Correct construction of the final constructs was confirmed by DNA sequence analysis  
26  
27 on an AppliedBiosystems automated DNA sequencer (ABI Prism 310 Genetic Analyzer;  
28  
29 Perkin-Elmer, Ueberlingen, Germany).  
30  
31  
32  
33  
34  
35  
36  
37  
38

### 39 **Expression and purification of sctbs [123 x ds16 x 33] and [123 x ds16 x 123]**

40  
41 For expression of the recombinant sctbs [123 x ds16 x 33] and [123 x ds16 x 123], and the  
42  
43 control sctbs ds[19 x 16 x 19] and [7 x ds16 x 7] specific for the cell surface antigens CD 19  
44  
45 and CD7, respectively, 293T cells were stably transfected with the respective expression  
46  
47 vectors (Kellner *et al*, 2008). Cells were cultured under permanent selection with hygromycin  
48  
49 C in a mini-PERM bioreactor (Greiner Bio-One, Frickenhausen, Germany) with a dialysis  
50  
51 membrane with a 12.5 kDa cutoff following manufacturer's instructions. The culture  
52  
53 supernatants containing the recombinant protein were collected 4 times in a period of 2  
54  
55 weeks. For expression of the control sctb [33 x 64 x 33] specific for the cell surface antigens  
56  
57 CD33 and CD64 (C. Stein, unpublished data), 293T cells were transiently transfected with the  
58  
59 expression vector using the calcium phosphate technique including 5 mM chloroquine  
60

1  
2  
3 (Sambrook *et al.*, 1989). The transfection medium was replaced by fresh culture medium after  
4  
5 10 h and for 5 d supernatants were collected every day and combined. Supernatants were  
6  
7 analyzed for the presence of antibody fragments by flow cytometry. The recombinant His-  
8  
9 tagged proteins were enriched by affinity chromatography using nickel-nitrilotriacetic acid  
10  
11 agarose (NTA) beads (Qiagen, Hilden, Germany) and dialyzed against phosphate-buffered  
12  
13 saline (PBS). Fusion proteins with green or red fluorescence protein were transiently  
14  
15 expressed in 293T cells and purified as described above.  
16  
17  
18  
19  
20  
21

### 22 **Sodium dodecyl sulfate polyacrylamide gel electrophoresis and Western blot analysis**

23  
24 Eluted proteins were analyzed by reducing sodium dodecyl sulphate polyacrylamide gel  
25  
26 electrophoresis (SDS-PAGE) using standard procedures (Laemmli, 1970). Gels were stained  
27  
28 with Coomassie brilliant blue R250 (Sigma-Aldrich, Taufkirchen, Germany). In Western blot  
29  
30 experiments, recombinant proteins were detected with an unconjugated penta-His antibody  
31  
32 (Qiagen) and a secondary horseradish peroxidase-coupled goat anti-mouse IgG antibody  
33  
34 (Dianova, Hamburg, Germany). Western Blots were developed using enhanced  
35  
36 chemiluminescence reagents (Amersham Pharmacia Biotech, Freiburg, Germany).  
37  
38  
39  
40  
41  
42

### 43 **Flow cytometry analysis**

44  
45 Immunofluorescence analysis was performed on a FACSCalibur instrument using CellQuest  
46  
47 software (Becton Dickinson, Heidelberg, Germany) as described (Schwemmlein *et al.*, 2006).  
48  
49 Briefly,  $1 \times 10^4$  events were collected for each sample, and whole cells were analyzed using  
50  
51 appropriate scatter gates to exclude cellular debris and aggregates. The recombinant scfb  
52  
53 proteins were detected using a penta-His antibody and a PE-conjugated goat anti-mouse-IgG  
54  
55 F(ab')<sub>2</sub> (DAKO Diagnostica GmbH, Hamburg, Germany), unless otherwise stated.  
56  
57  
58  
59  
60

### Determination of equilibrium binding constants ( $K_D$ )

$K_D$  values were determined by calibrated flow cytometry as described (Benedict *et al*, 1997). The highest mean fluorescence value was set to 100%, and all data points were normalized to this value. The experiments were repeated 6 times. The  $K_D$  values were calculated using a nonlinear regression curve fit.

### Measurement of *in vitro* serum stability

To determine the *in vitro* serum stability of scTbs [123 x ds16 x 33] and [123 x ds16 x 123], aliquots of the recombinant proteins were incubated at a sub-saturating concentration of 2.5  $\mu\text{g/ml}$  at 37°C (day 5) in human serum or stored at -20°C and thawed at defined time points (day 0-4). The residual binding activity was measured by flow cytometry on day 0 (as described above). The experiment was repeated at least 4 times and results were fitted to a monoexponential decay.

### Isolation of mononuclear cells (MNCs) and AML cells from human donors

Citrate buffered or heparinized peripheral blood from both healthy volunteers and AML patients or bone marrow from AML patients were obtained after receiving informed consent and with the approval of the Ethics Committee of the University of Erlangen-Nuremberg. MNCs were enriched by Lymphoflot (Biotest, Dreieich, Germany) Ficoll density centrifugation in Leukosep tubes (Greiner, Frickenhausen, Germany) according to manufacturer's instructions, and suspended in RPMI 1640 Glutamax-I medium containing 10% FCS, 100 units/mL penicillin and 100 mg/mL streptomycin. Viability was verified by Trypan blue exclusion and exceeded 95%.

### ADCC reactions

ADCC assays, using MNCs from healthy donors as effector cells, were performed in triplicates using a 3-hour  $^{51}\text{Cr}$  release assay as described (Elsasser *et al*, 1996). For blocking experiments, the parental antibody 3G8, the IgG1 isotype control, the CD123- and CD33-specific scFvs and the control scFv were added at a 125-fold and 500-fold molar excess, respectively. Dose-response curves were recorded using several equimolar 5-fold serial dilutions of the respective antibody fragments at a constant effector-to-target-cell (E:T) ratio of 40:1 MNCs to target cells. Background lysis induced by MNCs alone was subtracted from each data point, and  $\text{EC}_{50}$  values (concentration of an antibody fragment producing 50% of maximum specific lysis) and maximal lysis were calculated by using a sigmoidal dose-response curve fit. The experiments were repeated 6 times and mean values are reported, unless otherwise stated.

### ADCC reactions with enriched NK cells

NK cells were enriched from the MNC fraction using a NK cell isolation Kit (Miltenyi, Bergisch Gladbach Germany) and immunomagnetic bead (MACS) technology following manufacturer's protocols. Purities ranged from 83 to 98% as judged by 2-colour flow cytometry using FITC-coupled CD16-specific antibodies (Beckman Coulter) and PC7-conjugated CD56-specific antibodies (BD Biosciences, Heidelberg, Germany) according to the manufacturer's instructions. Flow cytometric analysis was performed on a FC 500 flow cytometer (Brea, CA). Isolated NK cells were cultured overnight at a density of  $2 \times 10^6$  cells/ml in RPMI 1640 Glutamax-I medium (Invitrogen) containing 10% FCS (Invitrogen), 100 units/ml penicillin (Invitrogen), and 100  $\mu\text{g}/\text{ml}$  streptomycin (Invitrogen). Cytotoxicity reactions were performed in an E:T cell ratio of 10:1 in a standard 4 h  $^{51}\text{Cr}$  as described above. After 4 hours of incubation, 25  $\mu\text{l}$  of supernatant was mixed with scintillation solution

1  
2  
3 Supermix (Applied Biosystems, Darmstadt, Germany) and incubated for 15 min with  
4  
5 agitation.  $^{51}\text{Cr}$ -release from triplicates was measured in counts per minute (cpm) using the  
6  
7 scintillation and luminescence counter 1450 Micro Beta TriLux (Perkin Elmer). Maximal  $^{51}\text{Cr}$   
8  
9 release was determined by adding Triton X-100 (1% final concentration) to target cells.  
10  
11

### 12 13 14 15 **Graphical and statistical analysis**

16  
17 Graphical and statistical analyses were performed using Graph Pad Prism Software (Graph  
18  
19 Pad Software Inc, San Diego, CA) and Microsoft EXCEL. Group data were reported as  
20  
21 means  $\pm$  standard error of the mean (SEM). Differences between groups were analyzed using  
22  
23 paired Student *t* test. *P* values  $< 0.05$  were considered significant.  
24  
25  
26  
27  
28  
29  
30  
31  
32  
33  
34  
35  
36  
37  
38  
39  
40  
41  
42  
43  
44  
45  
46  
47  
48  
49  
50  
51  
52  
53  
54  
55  
56  
57  
58  
59  
60

## Results

### *Generation and binding characteristics of sctbs [123 x ds16 x 33] and [123 x ds16 x 123]*

Sctbs [123 x ds16 x 33] and [123 x ds16 x 123] were constructed from previously published scFv components with specificities for CD123, CD33 and CD16 (Singer *et al*, 2010, Stein *et al*, 2010) (Fig 1A). Both constructs were expressed in stably transfected human 293T cells with yields ranging from 1.2 - 7.4 mg (sctb [123 x ds 16 x 33]) and 1.7 - 2.8 mg (sctb [123 x ds16 x 123]) per liter of cell culture medium. The electrophoretic mobilities of sctbs [123 x ds16 x 33] and [123 x ds16 x 123] corresponded to the molecular masses calculated from their amino acid sequences of approximately 89 and 90 kDa, respectively, and no breakdown products were detected (Fig 1B/C). The sctb [123 x ds16 x 33] specifically reacted with CD33<sup>+</sup>/CD123<sup>-</sup>/CD16<sup>-</sup> U937 cells and stably transfected CD123<sup>+</sup> or CD16<sup>+</sup>, 293 and CHO cells, respectively, but not with untransfected 293 or CHO cells (Fig 2A). Equilibrium binding constants of the dual targeting sctb were  $18.8 \pm 0.9$ ,  $17.8 \pm 2.2$ , and  $21.7 \pm 1.8$  nM for the reactions with CD123, CD33 and CD16 on single-positive cells, respectively (Table II). On double-positive cells, the sctb bound to CD123 and CD33 with a  $K_D$ -value of  $13.5 \pm 0.6$  nM, demonstrating simultaneous binding with both terminal scFvs and a small avidity effect. The mono targeting sctb [123 x ds16 x 123] reacted specifically with CD123<sup>+</sup> 293 and CD16<sup>+</sup> CHO cells but not with untransfected 293 and CHO cells (Fig 2B). This mono targeting sctb bound CD123 and CD16 with  $K_D$ -values of  $6.4 \pm 1.1$  and  $24.7 \pm 3.3$  nM, respectively. The higher avidity for CD123 of the mono targeting agent compared to the affinity of 18.8 nM for the dual targeting agent (sctb [123 x ds16 x 33]) with only one binding site for CD123 also gave evidence that both terminal scFvs of the mono targeting agent contributed to the overall reaction with CD123.

In competition experiments binding of sctb [123 x ds16 x 33] was completely blocked by pre-incubation of antigen single-positive U937, CD123<sup>+</sup> 293, and CD16<sup>+</sup> CHO cells with a 50-fold molar excess of CD33- or CD123-specific scFv, or a 20-fold molar excess of mAb

1  
2  
3 3G8, respectively (Fig 3A). Therefore, all three scFvs within the sctb [123 x ds16 x 33]  
4  
5 specifically reacted with their respective antigens.  
6

7  
8 To test whether sctb [123 x ds16 x 33] was able to bind to more than one antigen  
9  
10 simultaneously, CD33 single-positive U937 cells were incubated with the sctb and stained in  
11  
12 parallel with the recombinant proteins CD123ex-RFP and CD16ex-GFP (Fig 3B). These  
13  
14 proteins contained the extracellular domains of the surface proteins CD123 and CD16,  
15  
16 genetically fused to the red and green fluorescence proteins, respectively. As a result, the  
17  
18 target cells showed green and red fluorescence, indicating that the sctb mediated binding of  
19  
20 both CD123ex-RFP and CD16ex-GFP to the same target cell.  
21  
22

23  
24 To determine the *in vitro* serum stability of sctbs [123 x ds16 x 33] and [123 x ds16 x 123], the  
25  
26 recombinant proteins were incubated in human serum at 37°C for different lengths of time.  
27  
28 Residual binding activity was measured by flow cytometry and ranged between 81% and 94%  
29  
30 on day 5 for each scFv on respective single-positive cell lines. Therefore, stability for both  
31  
32 molecules for at least 5 days was confirmed (Table I).  
33  
34

#### 35 36 37 38 39 *ADCC of established AML-derived cell lines mediated by sctbs [123 x ds16 x 33] and* 40 41 *[123 x ds16 x 123]* 42

43  
44 To test the ability of both sctbs to mediate ADCC *in vitro*, ADCC reactions with 2 different  
45  
46 AML-derived cell lines were performed. Both, the sctbs [123 x ds16 x 33] and  
47  
48 [123 x ds16 x 123] mediated potent lysis of the CD123<sup>+</sup>/CD33<sup>+</sup> double-positive cell lines  
49  
50 MOLM-13 and THP-1 in a dose-dependent manner (Fig 4). Samples were incubated for 3 hrs  
51  
52 in a chromium release assay using unstimulated MNCs from unrelated healthy donors at an  
53  
54 effector-to-target-cell ratio of 40:1. For MOLM-13 cells the sctbs [123 x ds16 x 33] and  
55  
56 [123 x ds16 x 123] gave rise to EC<sub>50</sub> values in the low picomolar range of 21 and 50 pM,  
57  
58 respectively. Maximum specific lysis was ~46% and ~37%, respectively (Fig 4A). For THP-1  
59  
60 cells, EC<sub>50</sub> values ranged from 118 pM for the sctb [123 x ds16 x 33] to 212 pM for sctb



1  
2  
3 [123 x ds16 x 123], with maximum specific lysis of ~32% and ~19%, respectively (Fig 4B).  
4  
5 In these experiments the dual targeting scfb [123 x ds16 x 33] showed significantly greater  
6  
7 lysis at several concentrations than the mono targeting scfb [123 x ds16 x 123]. To test  
8  
9 whether target cell lysis was antigen-specific, competition ADCC experiments were  
10  
11 performed with scfb [123 x ds16 x 33] at a concentration of 1 nM (Fig 5). Co-incubation with  
12  
13 a simultaneous 500-fold molar excess of both CD33- and CD123-specific scFvs completely  
14  
15 blocked lysis of MOLM-13 cells, whereas competition with either scFv alone reduced target  
16  
17 cell lysis only to about half-maximum value. Therefore, both scFvs specific for CD33 and  
18  
19 CD123 contained within the triplebody must have contributed to the ADCC reaction. Also,  
20  
21 co-incubation with a 125-fold molar excess of the parental CD16-specific monoclonal  
22  
23 antibody 3G8 but not with an IgG1 isotype control antibody (4G7), significantly reduced lysis  
24  
25 of MOLM-13 cells, highlighting the specificity in triggering CD16<sup>+</sup> effector cells.  
26  
27  
28  
29  
30  
31  
32  
33

34 *ADCC of the established AML-derived cell line MOLM-13 mediated by scfbs*  
35  
36 *[123 x ds16 x 33] and [123 x ds16 x 123] and enriched NK cells*  
37  
38

39 To investigate whether the scfbs were able to activate CD16<sup>+</sup> effector cells not only within the  
40  
41 MNC fraction but also to directly activate purified CD16<sup>+</sup> NK cells, NK cells sorted with  
42  
43 immunomagnetic beads were used in ADCC reactions (Fig 4C). Purified NK cells and  
44  
45 MOLM-13 cells were used at an effector-to-target-cell ratio of 10:1 with triplebody  
46  
47 concentrations of 1 nM in 3 independent experiments. Both scfbs mediated similar significant  
48  
49 lysis (~60%) of AML cells compared to a control scfb. No specific lysis was observed when  
50  
51 samples were incubated in the absence of NK cells. These results show first, that the scfbs  
52  
53 were able to directly activate purified CD16<sup>+</sup> NK cells in ADCC reactions; second, that the  
54  
55 proteins alone without effector cells had no effect on the target cells; and third, that the  
56  
57 protein preparations were therefore free of cytotoxic contaminants.  
58  
59  
60

ADCC of primary leukaemia cells from patients mediated by scpbs [123 x ds16 x 33], [123 x ds16 x 123] and [33 x ds16 x 33]

Finally, both scpbs were tested for their ability to mediate ADCC of freshly isolated primary leukaemia cells from AML patients. For these experiments, isolated MNCs from either peripheral blood or bone marrow of seven patients were used in ADCC reactions. Overall, six peripheral blood and two bone marrow samples were studied. MNCs from one unrelated healthy donor per AML patient sample were used as effector cells (Fig 6; Table II). No deliberate effort was made to match the histocompatibility type and killer cell Ig-like receptor (KIR) patterns of tumour cells and donors. The AML FAB- and World-Health-Organization- (WHO; Vardiman *et al*, 2009) classifications for each patient were known and are listed in Table II. For direct comparison of the potencies of the dual targeting and mono targeting scpbs in ADCC of primary leukaemia cells, the previously published scpb [33 x ds16 x 33] (Singer *et al*, 2010) was also carried along. All three scpbs showed potent lysis of primary AML cells in a concentration-dependent manner (Fig 6). Four representative ADCC reactions of samples from patients 1 and 2 (peripheral blood; Fig 6A+B) and patients 6 and 7 (bone marrow; Fig 6C+D) are depicted. At a concentration of 5 nM, all three recombinant proteins produced potent specific lysis (Fig 6E). In 4/8 samples, the dual targeting scpb [123 x ds16 x 33] reached the highest extent of lysis. This finding was confirmed when ADCC data from all six peripheral blood samples were combined (Fig 6F). The EC<sub>50</sub> values derived from this data set were ~250, ~130, and ~250 pM for the scpbs [123 x ds16 x 33], [123 x ds16 x 123] and [33 x ds16 x 33], respectively. Maximum specific lysis was ~25%, ~19% and ~19% of input cells, respectively. Although the differences in maximum specific lysis between the dual targeting scpb [123 x ds16 x 33] and the mono targeting scpbs [123 x ds16 x 123] and [33 x ds16 x 33] **did not yet reach statistical significance**, the dual targeting molecule showed a remarkable tendency to mediate higher specific lysis of primary AML cells than its mono targeting relatives. These results clearly demonstrate that the scpbs can induce potent

ADCC of primary AML cells of different AML types *in vitro*, and point to small but distinct advantages for the dual targeting agent over the corresponding mono targeting agents.

For Peer Review

## Discussion

Here we describe the generation and characterization of two new antibody derivatives designed for use against AML cells. Although both sctbs are trivalent, the first, [123 x ds16 x 33] represents a “dual targeting” molecule, whereas the second, [123 x ds16 x 123], is a bispecific molecule with only one specificity for the tumour cell which we refer to as a “mono specific” or “mono targeting” agent. To our knowledge, the sctb [123 x ds16 x 33] is the first “dual targeting” single-chain triplebody simultaneously addressing two different antigens on a tumour cell to be reported. The sctb [123 x ds16 x 123] is an improvement over the existing bsscFv [123 x ds16] (Stein *et al*, 2010), in which the recently gained knowledge, that addition of a second scFv binding site for a tumour antigen leads to increased anti-tumour activity (Kellner *et al*, 2008), has been incorporated.

Both recombinant proteins were produced in stably transfected eukaryotic cells with expression yields ranging from 1.2 - 7.4 mg (sctb [123 x ds 16 x 33]) and 1.7 - 2.8 mg (sctb [123 x ds16 x 123]) per liter of cell culture medium. Both molecules bound specifically to antigen-positive cells. Furthermore, the sctb [123 x ds16 x 33] was able to bind to more than one antigen simultaneously, an essential prerequisite for the recruitment of CD16-positive effector cells. This also highlights the fact that three scFvs in tandem in one polypeptide-chain can produce a functional protein. Equilibrium binding constants on single-positive cells were approximately 22 nM (CD16), 18 nM (CD33), 19 nM (CD123) for the individual components carried in the sctbs, and 14 nM for the overall molecule on CD33/CD123 double-positive cells. The gain in affinity of approximately 1.4-fold on CD33/CD123 double-positive cells was less than one might have expected, based on our previous experience with the sctbs ds[19 x 16 x 19] and [33 x ds16 x 33] (Kellner *et al*, 2008, Singer *et al*, 2010). This may be due to differences in antigen density for CD33 and CD123 on double-positive cells, to differences in accessibility of both antigens or their spatial segregation into different subdomains. However, the result clearly indicates that both scFvs

1  
2  
3 against CD33 and CD123 carried by the dual targeting agent participate in binding to the  
4  
5 respective antigens on double-positive cells. The  $K_D$  values of the mono targeting  
6  
7 scfb [123 x ds16 x 123] were approximately 25 nM and 6 nM for the CD16 and CD123 scFvs,  
8  
9 respectively. This highlights a 3-fold gain in affinity for CD123 compared to the dual  
10  
11 targeting scfb [123 x ds16 x 33], which must be due to an avidity effect caused by the addition  
12  
13 of a second CD123-specific scFv in the mono targeting protein. This result is a further clear  
14  
15 indication that both antigens actively participate in binding to the target cell, confirming  
16  
17 earlier findings for this molecular format (Kellner *et al*, 2008, Singer *et al*, 2010). Another  
18  
19 important parameter for antibody-derivatives is stability. When administered into the blood  
20  
21 stream as therapeutic agents, such molecules need to be stable against degradation and  
22  
23 unfolding (Carter 2006). Both proteins have been tested and were stable in human serum at  
24  
25 37°C for at least 5 days. **Stability tests in immunocompetent mice similar to those**  
26  
27 **previously reported for the scfb ds[19 x 16 x 19] (Kellner *et al*, 2008) are planned.**

28  
29 Both scfbs induced potent ADCC of the AML-derived, CD123/CD33 double-positive cell  
30  
31 lines MOLM-13 and THP-1. For several concentrations the dual targeting  
32  
33 scfb [123 x ds16 x 33] revealed a significantly higher lysis than the mono targeting  
34  
35 scfb [123 x ds16 x 123]. This interesting result is probably due to the fact that a greater  
36  
37 combined antigen density was accessible to the dual targeting agent **and hence the molecule**  
38  
39 **showed a prolonged opsonisation of the tumour cell. This probably leads to an increased**  
40  
41 **probability to recruit effector cells.** Competition experiments revealed that cell lysis by  
42  
43 scfb [123 x ds16 x 33] was strictly antigen-specific. Co-incubation of the scfb with an excess  
44  
45 of either anti-CD33 or anti-CD123 scFvs separately reduced cell lysis to about 50-60%.  
46  
47 Remarkably, simultaneous co-incubation with both scFvs completely abolished cell lysis,  
48  
49 indicating that both binding moieties played an active role not only in binding to the tumour  
50  
51 cell but also in mediating ADCC. The same is true for CD16. Co-incubation with the CD16  
52  
53 monoclonal antibody 3G8 reduced the measured cell lysis to such an extent that it was no  
54  
55  
56  
57  
58  
59  
60

1  
2  
3 longer statistically significant compared to the lysis obtained with a control scfb. In addition,  
4  
5 both scfbs were able to induce potent ADCC with purified CD16<sup>+</sup> NK cells as effector cells at  
6  
7 an effector-to-target ratio of 10:1. Furthermore, cell lysis due to binding of the proteins to the  
8  
9 target cells alone in the absence of effector cells and lysis due to toxic contaminants in the  
10  
11 protein preparations were ruled out in these experiments by omission of the effector cells.  
12  
13

14  
15 Finally, the scfbs also induced potent ADCC of primary cells from peripheral blood or bone  
16  
17 marrow of AML patients. For direct comparison of the ability to mediate ADCC of primary  
18  
19 cells, the existing mono targeting scfb [33 x ds16 x 33] (Singer *et al*, 2010) was included in  
20  
21 these experiments. Although not yet statistically significant, the dual targeting  
22  
23 scfb [123 x ds16 x 33] induced the highest maximum lysis averaged over all patients. The  
24  
25 isolated cells originated from a variety of AML subtypes according to FAB- and WHO-  
26  
27 classifications. These samples showed a high variability in the response to the scfbs (Figure  
28  
29 6A-E). This is most likely due to the highly heterogenous nature of the AML, with many  
30  
31 subtypes characterized by different genomic alterations, different disease phenotypes, disease  
32  
33 progression and responses to treatment (Hiddemann *et al*, 2005). Therefore, a broad  
34  
35 variability both in the fraction of total cells expressing CD33 and CD123 and cells susceptible  
36  
37 to ADCC lysis mediated by our recombinant proteins was to be expected and had also been  
38  
39 previously observed for the susceptibility to the CD33-ETA' immunotoxin (Schwemmlin *et*  
40  
41 *al*, 2006). **It would be interesting in the future to study, whether the CD34<sup>+</sup>CD38<sup>-</sup>**  
42  
43 **compartment of primary AML-cells, obtained by preparative sorting, which contains**  
44  
45 **the AML-LSCs, shows a stronger extent of ADCC-lysis than other compartments devoid**  
46  
47 **of AML-LSCs. Until now, these experiments could not be performed due to limited**  
48  
49 **availability of primary patient cells.**  
50  
51  
52

53  
54 Recent studies gave rise to the concept that CD16-positive monocytes/macrophages may play  
55  
56 a vital role as effector cells *in vivo* mediating anti-tumour effects of therapeutic antibodies  
57  
58 (Uchida *et al*, 2004, Tedder *et al*, 2006). In particular, their role in the elimination of AML  
59  
60

1  
2  
3 cells by phagocytosis has been extensively studied (Jaiswal *et al*, 2009, Majeti *et al*, 2009). In  
4  
5 our experiments, CD16-positive NK cells represented the main effector cell population in  
6  
7 purified MNCs, a leukocyte fraction devoid of monocytes/macrophages. It will be an  
8  
9 important question for the future to determine, whether our triplebodies are able to activate  
10  
11 not only NK cells by monovalent binding to CD16 but also CD16-positive macrophages.  
12  
13 Current studies in our group address this question.  
14  
15

16  
17 The novel scTbs [123 x ds16 x 33] and [123 x ds16 x 123] described in this study represent  
18  
19 promising therapeutic molecules for the treatment of AML in the future. Especially the dual-  
20  
21 targeting scTb [123 x ds16 x 33] might become valuable for the targeted elimination of AML-  
22  
23 LSCs. Its novel combination of two scFvs directed against antigens present on AML-LSCs at  
24  
25 greater densities than on normal HSCs offers the potential for a preferential targeting of this  
26  
27 important cell type *in vivo*. Future studies will need to answer the question whether  
28  
29 preferential targeting indeed is possible *in vivo*.  
30  
31  
32  
33  
34  
35  
36  
37  
38  
39  
40  
41  
42  
43  
44  
45  
46  
47  
48  
49  
50  
51  
52

### 53 **Acknowledgements**

54  
55 The authors thank Prof. R. Levy from Stanford University for making the 4G7 hybridoma  
56  
57 available, Dr. J. G. van de Winkel for the CD16 transfected CHO cells, and Prof. J. Dick from  
58  
59 Toronto for valuable scientific advice. We are grateful to B. Bock and S. Standar for excellent  
60  
technical assistance and Th. Lange for administrative assistance.



- 1  
2  
3 Bargou, R., Leo, E., Zugmaier, G., Klinger, M., Goebeler, M., Knop, S., Noppeney, R.,  
4 Viardot, A., Hess, G., Schuler, M., Einsele, H., Brandl, C., Wolf, A., Kirchinger, P.,  
5 Klappers, P., Schmidt, M., Riethmuller, G., Reinhardt, C., Baeuerle, P.A. & Kufer, P.  
6 (2008) Tumor regression in cancer patients by very low doses of a T cell-engaging  
7 antibody. *Science*, **321**, 974-977.  
8  
9  
10 Benedict, C.A., MacKrell, A.J. & Anderson, W.F. (1997) Determination of the binding  
11 affinity of an anti-CD34 single-chain antibody using a novel, flow cytometry based  
12 assay. *J Immunol Methods*, **201**, 223-231.  
13  
14  
15 Bonnet, D. & Dick, J.E. (1997) Human acute myeloid leukemia is organized as a hierarchy  
16 that originates from a primitive hematopoietic cell. *Nat Med*, **3**, 730-737.  
17  
18  
19 Bross, P.F., Beitz, J., Chen, G., Chen, X.H., Duffy, E., Kieffer, L., Roy, S., Sridhara, R.,  
20 Rahman, A., Williams, G. & Pazdur, R. (2001) Approval summary: gemtuzumab  
21 ozogamicin in relapsed acute myeloid leukemia. *Clin Cancer Res*, **7**, 1490-1496.  
22  
23  
24 Bruenke, J., Fischer, B., Barbin, K., Schreiter, K., Wachter, Y., Mahr, K., Titgemeyer, F.,  
25 Niederweis, M., Peipp, M., Zunino, S.J., Repp, R., Valerius, T. & Fey, G.H. (2004) A  
26 recombinant bispecific single-chain Fv antibody against HLA class II and  
27 FcγRIII (CD16) triggers effective lysis of lymphoma cells. *Br J Haematol*, **125**,  
28 167-179.  
29  
30  
31 Buchner, T., Berdel, W.E., Schoch, C., Haferlach, T., Reichle, A., Staib, P., Sauerland, M.C.,  
32 Woermann, B., Hiddemann, W. & The German, A.M.L.C.G. (2005) Therapeutic  
33 outcome in prognostic subgroups of de-novo acute myeloid leukemia (AML) and the  
34 role of the age factor. A study in 1834 patients of 16 to 84 years. *J Clin Oncol*  
35 (*Meeting Abstracts*), **23**, 6552-.  
36  
37  
38 Carter, P.J. (2006) Potent antibody therapeutics by design. *Nat Rev Immunol*, **6**, 343-357.  
39  
40  
41 Daeron, M. (1997) Fc receptor biology. *Annu Rev Immunol*, **15**, 203-234.  
42  
43  
44 Dick, J.E. (2008) Stem cell concepts renew cancer research. *Blood*, **112**, 4793-4807.  
45  
46  
47 Du, X., Ho, M. & Pastan, I. (2007) New immunotoxins targeting CD123, a stem cell antigen  
48 on acute myeloid leukemia cells. *J Immunother*, **30**, 607-613.  
49  
50  
51 Elsasser, D., Valerius, T., Repp, R., Weiner, G.J., Deo, Y., Kalden, J.R., van de Winkel, J.G.,  
52 Stevenson, G.T., Glennie, M.J. & Gramatzki, M. (1996) HLA class II as potential  
53 target antigen on malignant B cells for therapy with bispecific antibodies in  
54 combination with granulocyte colony-stimulating factor. *Blood*, **87**, 3803-3812.  
55  
56  
57 Estey, E. & Dohner, H. (2006) Acute myeloid leukaemia. *Lancet*, **368**, 1894-1907.  
58  
59  
60 Feuring-Buske, M., Frankel, A.E., Alexander, R.L., Gerhard, B. & Hogge, D.E. (2002) A  
diphtheria toxin-interleukin 3 fusion protein is cytotoxic to primitive acute myeloid  
leukemia progenitors but spares normal progenitors. *Cancer Res*, **62**, 1730-1736.  
Fleit, H.B., Wright, S.D. & Unkeless, J.C. (1982) Human neutrophil Fc gamma receptor  
distribution and structure. *Proc Natl Acad Sci U S A*, **79**, 3275-3279.



- 1  
2  
3  
4 Frankel, A., Liu, J.S., Rizzieri, D. & Hogge, D. (2008) Phase I clinical study of diphtheria  
5 toxin-interleukin 3 fusion protein in patients with acute myeloid leukemia and  
6 myelodysplasia. *Leuk Lymphoma*, **49**, 543-553.  
7  
8  
9 Freeman, S.D., Kelm, S., Barber, E.K. & Crocker, P.R. (1995) Characterization of CD33 as a  
10 new member of the sialoadhesin family of cellular interaction molecules. *Blood*, **85**,  
11 2005-2012.  
12  
13 Graf, M., Hecht, K., Reif, S., Pelka-Fleischer, R., Pfister, K. & Schmetzer, H. (2004)  
14 Expression and prognostic value of hemopoietic cytokine receptors in acute myeloid  
15 leukemia (AML): implications for future therapeutical strategies. *Eur J Haematol*, **72**,  
16 89-106.  
17  
18  
19 Guan, Y. & Hogge, D.E. (2000) Proliferative status of primitive hematopoietic progenitors  
20 from patients with acute myelogenous leukemia (AML). *Leukemia*, **14**, 2135-2141.  
21  
22  
23 Guzman, M.L., Neering, S.J., Upchurch, D., Grimes, B., Howard, D.S., Rizzieri, D.A., Luger,  
24 S.M. & Jordan, C.T. (2001) Nuclear factor-kappaB is constitutively activated in  
25 primitive human acute myelogenous leukemia cells. *Blood*, **98**, 2301-2307.  
26  
27  
28 Hauswirth, A.W., Florian, S., Printz, D., Sotlar, K., Krauth, M.T., Fritsch, G., Schernthaner,  
29 G.H., Wacheck, V., Selzer, E., Sperr, W.R. & Valent, P. (2007) Expression of the  
30 target receptor CD33 in CD34+/CD38-/CD123+ AML stem cells. *Eur J Clin Invest*,  
31 **37**, 73-82.  
32  
33  
34 Hiddemann, W., Spiekermann, K., Buske, C., Feuring-Buske, M., Braess, J., Haferlach, T.,  
35 Schoch, C., Kern, W., Schnittger, S., Berdel, W., Wormann, B., Heinecke, A.,  
36 Sauerland, C. & Buchner, T. (2005) Towards a pathogenesis-oriented therapy of acute  
37 myeloid leukemia. *Crit Rev Oncol Hematol*, **56**, 235-245.  
38  
39  
40 Hope, K.J., Jin, L. & Dick, J.E. (2004) Acute myeloid leukemia originates from a hierarchy of  
41 leukemic stem cell classes that differ in self-renewal capacity. *Nat Immunol*, **5**, 738-  
42 743.  
43  
44  
45 Hosen, N., Park, C.Y., Tatsumi, N., Oji, Y., Sugiyama, H., Gramatzki, M., Krensky, A.M. &  
46 Weissman, I.L. (2007) CD96 is a leukemic stem cell-specific marker in human acute  
47 myeloid leukemia. *Proc Natl Acad Sci U S A*, **104**, 11008-11013.  
48  
49  
50 Huang, S., Chen, Z., Yu, J.F., Young, D., Bashey, A., Ho, A.D. & Law, P. (1999) Correlation  
51 between IL-3 receptor expression and growth potential of human CD34+  
52 hematopoietic cells from different tissues. *Stem Cells*, **17**, 265-272.  
53  
54  
55 Ishikawa, F., Yoshida, S., Saito, Y., Hijikata, A., Kitamura, H., Tanaka, S., Nakamura, R.,  
56 Tanaka, T., Tomiyama, H., Saito, N., Fukata, M., Miyamoto, T., Lyons, B., Ohshima,  
57 K., Uchida, N., Taniguchi, S., Ohara, O., Akashi, K., Harada, M. & Shultz, L.D.  
58 (2007) Chemotherapy-resistant human AML stem cells home to and engraft within the  
59 bone-marrow endosteal region. *Nat Biotechnol*, **25**, 1315-1321.  
60

- 1  
2  
3 Jaiswal, S., Jamieson, C.H., Pang, W.W., Park, C.Y., Chao, M.P., Majeti, R., Traver, D., van  
4 Rooijen, N. & Weissman, I.L. (2009) CD47 is upregulated on circulating  
5 hematopoietic stem cells and leukemia cells to avoid phagocytosis. *Cell*, **138**, 271-285.  
6  
7  
8 Jedema, I., Barge, R.M., van der Velden, V.H., Nijmeijer, B.A., van Dongen, J.J., Willemze,  
9 R. & Falkenburg, J.H. (2004) Internalization and cell cycle-dependent killing of  
10 leukemic cells by Gemtuzumab Ozogamicin: rationale for efficacy in CD33-negative  
11 malignancies with endocytic capacity. *Leukemia*, **18**, 316-325.  
12  
13  
14 Jin, L., Hope, K.J., Zhai, Q., Smadja-Joffe, F. & Dick, J.E. (2006) Targeting of CD44  
15 eradicates human acute myeloid leukemic stem cells. *Nat Med*, **12**, 1167-1174.  
16  
17  
18 Jin, L., Lee, E.M., Ramshaw, H.S., Busfield, S.J., Peoppl, A.G., Wilkinson, L., Guthridge,  
19 M.A., Thomas, D., Barry, E.F., Boyd, A., Gearing, D.P., Vairo, G., Lopez, A.F., Dick,  
20 J.E. & Lock, R.B. (2009) Monoclonal antibody-mediated targeting of CD123, IL-3  
21 receptor alpha chain, eliminates human acute myeloid leukemic stem cells. *Cell Stem*  
22 *Cell*, **5**, 31-42.  
23  
24  
25 Jordan, C.T., Upchurch, D., Szilvassy, S.J., Guzman, M.L., Howard, D.S., Pettigrew, A.L.,  
26 Meyerrose, T., Rossi, R., Grimes, B., Rizzieri, D.A., Luger, S.M. & Phillips, G.L.  
27 (2000) The interleukin-3 receptor alpha chain is a unique marker for human acute  
28 myelogenous leukemia stem cells. *Leukemia*, **14**, 1777-1784.  
29  
30  
31 Kellner, C., Bruenke, J., Stieglmaier, J., Schwemmlin, M., Schwenkert, M., Singer, H.,  
32 Mentz, K., Peipp, M., Lang, P., Oduncu, F., Stockmeyer, B. & Fey, G.H. (2008) A  
33 novel CD19-directed recombinant bispecific antibody derivative with enhanced  
34 immune effector functions for human leukemic cells. *J Immunother*, **31**, 871-884.  
35  
36  
37 Kipriyanov, S.M., Moldenhauer, G., Schuhmacher, J., Cochlovius, B., Von der Lieth, C.W.,  
38 Matys, E.R. & Little, M. (1999) Bispecific tandem diabody for tumor therapy with  
39 improved antigen binding and pharmacokinetics. *J Mol Biol*, **293**, 41-56.  
40  
41  
42 Lapidot, T., Sirard, C., Vormoor, J., Murdoch, B., Hoang, T., Caceres-Cortes, J., Minden, M.,  
43 Paterson, B., Caligiuri, M.A. & Dick, J.E. (1994) A cell initiating human acute  
44 myeloid leukaemia after transplantation into SCID mice. *Nature*, **367**, 645-648.  
45  
46  
47 Larson, R.A., Boogaerts, M., Estey, E., Karanes, C., Stadtmaier, E.A., Sievers, E.L., Mineur,  
48 P., Bennett, J.M., Berger, M.S., Eten, C.B., Munteanu, M., Loken, M.R., Van Dongen,  
49 J.J., Bernstein, I.D. & Appelbaum, F.R. (2002) Antibody-targeted chemotherapy of  
50 older patients with acute myeloid leukemia in first relapse using Mylotarg  
51 (gemtuzumab ozogamicin). *Leukemia*, **16**, 1627-1636.  
52  
53  
54 Lowenberg, B., Beck, J., Graux, C., van Putten, W., Schouten, H.C., Verdonck, L.F., Ferrant,  
55 A., Sonneveld, P., Jongen-Lavrencic, M., von Lilienfeld-Toal, M., Biemond, B.J.,  
56 Vellenga, E., Breems, D., de Muijnck, H., Schaafsma, R., Verhoef, G., Dohner, H.,  
57 Gratwohl, A., Pabst, T., Ossenkoppele, G.J. & Maertens, J. (2010) Gemtuzumab  
58 ozogamicin as postremission treatment in AML at 60 years of age or more: results of a  
59 multicenter phase 3 study. *Blood*, **115**, 2586-2591.  
60  
Lowenberg, B., Griffin, J.D. & Tallman, M.S. (2003) Acute myeloid leukemia and acute  
promyelocytic leukemia. *Hematology Am Soc Hematol Educ Program*, 82-101.

- 1  
2  
3 Majeti, R., Chao, M.P., Alizadeh, A.A., Pang, W.W., Jaiswal, S., Gibbs, K.D., Jr., van  
4 Rooijen, N. & Weissman, I.L. (2009) CD47 is an adverse prognostic factor and  
5 therapeutic antibody target on human acute myeloid leukemia stem cells. *Cell*, **138**,  
6 286-299.  
7  
8  
9 Mattes, M.J. (1997) Binding parameters of antibodies reacting with multivalent antigens:  
10 functional affinity or pseudo-affinity. *J Immunol Methods*, **202**, 97-101.  
11  
12  
13 Meeker, T.C., Miller, R.A., Link, M.P., Bindl, J., Warnke, R. & Levy, R. (1984) A unique  
14 human B lymphocyte antigen defined by a monoclonal antibody. *Hybridoma*, **3**, 305-  
15 320.  
16  
17  
18 Moretti, S., Lanza, F., Dabusti, M., Tieghi, A., Campioni, D., Dominici, M. & Castoldi, G.L.  
19 (2001) CD123 (interleukin 3 receptor alpha chain). *J Biol Regul Homeost Agents*, **15**,  
20 98-100.  
21  
22  
23 Munoz, L., Nomdedeu, J.F., Lopez, O., Carnicer, M.J., Bellido, M., Aventin, A., Brunet, S. &  
24 Sierra, J. (2001) Interleukin-3 receptor alpha chain (CD123) is widely expressed in  
25 hematologic malignancies. *Haematologica*, **86**, 1261-1269.  
26  
27  
28 Pluckthun, A. & Pack, P. (1997) New protein engineering approaches to multivalent and  
29 bispecific antibody fragments. *Immunotechnology*, **3**, 83-105.  
30  
31  
32 Ravandi, F. & Estrov, Z. (2006) Eradication of leukemia stem cells as a new goal of therapy  
33 in leukemia. *Clin Cancer Res*, **12**, 340-344.  
34  
35  
36 Ravetch, J.V. & Perussia, B. (1989) Alternative membrane forms of Fc gamma RIII(CD16)  
37 on human natural killer cells and neutrophils. Cell type-specific expression of two  
38 genes that differ in single nucleotide substitutions. *J Exp Med*, **170**, 481-497.  
39  
40  
41 Robak, T. & Wierzbowska, A. (2009) Current and emerging therapies for acute myeloid  
42 leukemia. *Clin Ther*, **31 Pt 2**, 2349-2370.  
43  
44  
45 Roberts, A.W., He, S., Bradstock, K.F., Hertzberg, M.S., Durrant, S.T.S., Ritchie, D., Lewis,  
46 I.D., Marlton, P., McLachlan, A.J., Yeadon, T.M., Busfield, S.J., Barnden, M.J.,  
47 Davis, R., Hosback, S., Miroso, D., Biondo, M., Bamford, S., DeWitte, M. & Bassler,  
48 R. (2008) A Phase 1 and Correlative Biological Study of CSL360 (anti-CD123 mAb)  
49 in AML. *ASH Annual Meeting Abstracts*, **112**, 2956-.  
50  
51  
52 Robinson, M.K., Hodge, K.M., Horak, E., Sundberg, A.L., Russeva, M., Shaller, C.C., von  
53 Mehren, M., Shchhaveleva, I., Simmons, H.H., Marks, J.D. & Adams, G.P. (2008)  
54 Targeting ErbB2 and ErbB3 with a bispecific single-chain Fv enhances targeting  
55 selectivity and induces a therapeutic effect in vitro. *Br J Cancer*, **99**, 1415-1425.  
56  
57  
58 Rothdiener, M., Muller, D., Castro, P.G., Scholz, A., Schwemmlin, M., Fey, G.,  
59 Heidenreich, O. & Kontermann, R.E. (2010) Targeted delivery of siRNA to CD33-  
60 positive tumor cells with liposomal carrier systems. *J Control Release*, **in process**.

- 1  
2  
3 Schoonjans, R., Willems, A., Schoonoghe, S., Leoen, J., Grooten, J. & Mertens, N. (2001) A  
4 new model for intermediate molecular weight recombinant bispecific and trispecific  
5 antibodies by efficient heterodimerization of single chain variable domains through  
6 fusion to a Fab-chain. *Biomol Eng*, **17**, 193-202.  
7  
8  
9 Schwemmlin, M., Peipp, M., Barbin, K., Saul, D., Stockmeyer, B., Repp, R., Birkmann, J.,  
10 Oduncu, F., Emmerich, B. & Fey, G.H. (2006) A CD33-specific single-chain  
11 immunotoxin mediates potent apoptosis of cultured human myeloid leukaemia cells.  
12 *Br J Haematol*, **133**, 141-151.  
13  
14  
15 Shipley, J.L. & Butera, J.N. (2009) Acute myelogenous leukemia. *Exp Hematol*, **37**, 649-658.  
16  
17  
18 Sievers, E.L. (2001) Efficacy and safety of gemtuzumab ozogamicin in patients with CD33-  
19 positive acute myeloid leukaemia in first relapse. *Expert Opin Biol Ther*, **1**, 893-901.  
20  
21 Sievers, E.L., Appelbaum, F.R., Spielberger, R.T., Forman, S.J., Flowers, D., Smith, F.O.,  
22 Shannon-Dorcy, K., Berger, M.S. & Bernstein, I.D. (1999) Selective ablation of acute  
23 myeloid leukemia using antibody-targeted chemotherapy: a phase I study of an anti-  
24 CD33 calicheamicin immunoconjugate. *Blood*, **93**, 3678-3684.  
25  
26  
27 Singer, H., Kellner, C., Lanig, H., Aigner, M., Stockmeyer, B., Oduncu, F., Schwemmlin,  
28 M., Stein, C., Mentz, K., Mackensen, A. & Fey, G.H. (2010) Effective elimination of  
29 acute myeloid leukemic cells by recombinant bispecific antibody derivatives directed  
30 against CD33 and CD16. *Journal of Immunotherapy*, **accepted**.  
31  
32  
33 Somasundaram, C., Sundarapandiyam, K., Keler, T., Deo, Y.M. & Graziano, R.F. (1999)  
34 Development of a trispecific antibody conjugate that directs two distinct tumor-  
35 associated antigens to CD64 on myeloid effector cells. *Hum Antibodies*, **9**, 47-54.  
36  
37  
38 Song, L.P., Cheng, J.L., Wang, X.B., Zhang, Z., Fang, M., Zhou, Z.Y. & Huang, H.L. (2003)  
39 A new model of trispecific antibody resulting the cytotoxicity directed against tumor  
40 cells. *Sheng Wu Hua Xue Yu Sheng Wu Wu Li Xue Bao (Shanghai)*, **35**, 503-510.  
41  
42  
43 Stasi, R. (2008) Gemtuzumab ozogamicin: an anti-CD33 immunoconjugate for the treatment  
44 of acute myeloid leukaemia. *Expert Opin Biol Ther*, **8**, 527-540.  
45  
46  
47 Stein, C., Kellner, C., Kugler, M., Reiff, N., Mentz, K., Schwenkert, M., Stockmeyer, B.,  
48 Mackensen, A. & Fey, G.H. (2010) Novel conjugates of single-chain Fv antibody  
49 fragments specific for stem cell antigen CD123 mediate potent death of acute myeloid  
50 leukaemia cells. *Br J Haematol*, **148**, 879-889.  
51  
52  
53 Taussig, D.C., Pearce, D.J., Simpson, C., Rohatiner, A.Z., Lister, T.A., Kelly, G., Luongo,  
54 J.L., Danet-Desnoyers, G.A. & Bonnet, D. (2005) Hematopoietic stem cells express  
55 multiple myeloid markers: implications for the origin and targeted therapy of acute  
56 myeloid leukemia. *Blood*, **106**, 4086-4092.  
57  
58  
59 Tedder, T.F., Baras, A. & Xiu, Y. (2006) Fcγ receptor-dependent effector mechanisms  
60 regulate CD19 and CD20 antibody immunotherapies for B lymphocyte malignancies  
and autoimmunity. *Springer Semin Immunopathol*, **28**, 351-364.

- 1  
2  
3 ten Cate, B., Bremer, E., de Bruyn, M., Bijma, T., Samplonius, D., Schwemmlin, M., Huls,  
4 G., Fey, G. & Helfrich, W. (2009) A novel AML-selective TRAIL fusion protein that  
5 is superior to Gemtuzumab Ozogamicin in terms of in vitro selectivity, activity and  
6 stability. *Leukemia*, **23**, 1389-1397.  
7  
8  
9 Testa, U., Riccioni, R., Diverio, D., Rossini, A., Lo Coco, F. & Peschle, C. (2004)  
10 Interleukin-3 receptor in acute leukemia. *Leukemia*, **18**, 219-226.  
11  
12 Testa, U., Riccioni, R., Militi, S., Coccia, E., Stellacci, E., Samoggia, P., Latagliata, R.,  
13 Mariani, G., Rossini, A., Battistini, A., Lo-Coco, F. & Peschle, C. (2002) Elevated  
14 expression of IL-3Ralpha in acute myelogenous leukemia is associated with enhanced  
15 blast proliferation, increased cellularity, and poor prognosis. *Blood*, **100**, 2980-2988.  
16  
17  
18 Uchida, J., Hamaguchi, Y., Oliver, J.A., Ravetch, J.V., Poe, J.C., Haas, K.M. & Tedder, T.F.  
19 (2004) The innate mononuclear phagocyte network depletes B lymphocytes through  
20 Fc receptor-dependent mechanisms during anti-CD20 antibody immunotherapy. *J Exp*  
21 *Med*, **199**, 1659-1669.  
22  
23  
24 Vallera, D.A., Todhunter, D.A., Kuroki, D.W., Shu, Y., Sicheneder, A. & Chen, H. (2005) A  
25 bispecific recombinant immunotoxin, DT2219, targeting human CD19 and CD22  
26 receptors in a mouse xenograft model of B-cell leukemia/lymphoma. *Clin Cancer Res*,  
27 **11**, 3879-3888.  
28  
29  
30 van Rhenen, A., Feller, N., Kelder, A., Westra, A.H., Rombouts, E., Zweegman, S., van der  
31 Pol, M.A., Waisfisz, Q., Ossenkoppele, G.J. & Schuurhuis, G.J. (2005) High stem cell  
32 frequency in acute myeloid leukemia at diagnosis predicts high minimal residual  
33 disease and poor survival. *Clin Cancer Res*, **11**, 6520-6527.  
34  
35  
36 Vardiman, J.W., Thiele, J., Arber, D.A., Brunning, R.D., Borowitz, M.J., Porwit, A., Harris,  
37 N.L., Le Beau, M.M., Hellstrom-Lindberg, E., Tefferi, A. & Bloomfield, C.D. (2009)  
38 The 2008 revision of the World Health Organization (WHO) classification of myeloid  
39 neoplasms and acute leukemia: rationale and important changes. *Blood*, **114**, 937-951.  
40  
41  
42  
43  
44  
45  
46  
47  
48  
49  
50  
51  
52  
53  
54  
55  
56  
57  
58  
59  
60



## Figure legends

**Figure 1:** Design and purification of scpbs [123 x ds16 x 33] and [123 x ds16 x 123]. (A) Structure of scpbs [123 x ds16 x 33] and [123 x ds16 x 123].  $\kappa$ , secretion leader sequence from the murine Ig $\kappa$  light chain; V<sub>L</sub> and V<sub>H</sub>, variable region light and heavy chains; L, (G<sub>4</sub>S)<sub>4</sub> linker; S-S, disulphide bond; S, H, M, STREP-, hexahistidine- and myc-tags. (B) Purity of scpbs eluted from nickel-NTA, evaluated by Coomassie blue staining. (C) Western blot analysis using anti-His antibodies. Left lane: scpb [123 x ds16 x 33]; right lane: scpb [123 x ds16 x 123].

**Figure 2:** Antigen-specific binding of scpbs [123 x ds16 x 33] and [123 x ds16 x 123]. (A) Specific binding of the dual targeting scpb [123 x ds16 x 33] to CD33 single-positive U937 cells (I), CD123-stably transfected 293 (II), CD16-stably transfected CHO (III), untransfected 293 (IV), and untransfected CHO cells (V), respectively, analyzed by flow cytometry. White: control scpb; black: scpb [123 x ds16 x 33]. (B) Specific binding of the mono targeting scpb [123 x ds16 x 123] to single-positive CD123-stably transfected 293 (I), single-positive CD16-stably transfected CHO (II), untransfected 293 (III), and untransfected CHO cells (IV), respectively. White: control scpb; black: scpb [123 x ds16 x 123].

**Figure 3:** Simultaneous and specific binding of scpb [123 x ds16 x 33]. (A) The fluorescence signal on CD33 single-positive U937 cells incubated with scpb [123 x ds16 x 33] and stained with a fusion protein consisting of the extracellular domain of CD123 and red fluorescence protein (CD123ex-RFP) was abolished after preincubation of the cells with a 50-fold molar excess of CD33-specific scFv, whereas a control scFv did not reduce the signal (I). The fluorescence signal on CD123 single-positive 293 cells incubated with scpb [123 x ds16 x 33] and stained with a fusion protein consisting of CD16ex and green fluorescence protein

(CD16ex-GFP) was abolished after preincubation with a 50-fold molar excess of CD123-specific scFv, whereas a control scFv did not reduce the signal (II). (I) + (II) White: control sctb; black: sctb [123 x ds16 x 33]; light grey: sctb [123 x ds16 x 33] + control scFv; dark grey: sctb [123 x ds16 x 33] + CD33 specific scFv (I) + CD123-specific scFv (II). The fluorescence signal on CD16 single-positive CHO cells incubated with sctb [123 x ds16 x 33] and stained with CD33ex-RFP was abolished after preincubation with a 20-fold molar excess of anti-CD16 mAb 3G8, whereas a control mAb did not reduce the signal. White: control sctb; black sctb [123 x ds16 x 33]; light grey: sctb [123 x ds16 x 33] + control mAb; dark grey: sctb [123 x ds16 x 33] + 3G8 (III). (B) Simultaneous binding of sctb [123 x ds16 x 33] to CD33, CD123 and CD16. CD33 single-positive U937 cells were incubated with the sctb and stained simultaneously with CD123ex-RFP (I) and CD16ex-GFP (II). White: control sctb; black: sctb [123 x ds16 x 33].

**Figure 4:** Sctbs [123 x ds16 x 33] and [123 x ds16 x 123] induce ADCC of double-positive AML cell lines. Sctbs [123 x ds16 x 33] (closed triangle) and [123 x ds16 x 123] (open circle) mediated dose-dependent ADCC of double-positive MOLM-13 (A) and THP-1 (B) cells, whereas a control sctb (closed square) did not induce cell lysis. Data points represent mean percentage of specific lysis obtained with isolated MNCs from six different healthy donors at an effector-to-target-cell (E:T) ratio of 40:1. Specific lysis is total lysis minus spontaneous lysis. \*Statistically significant differences ( $P < 0.05$ ) in ADCC relative to the control sctb. #Statistically significant differences in mediating ADCC by sctb [123 x ds16 x 33] relative to sctb [123 x ds16 x 123]. (C) Specific lysis with purified NK cells mediated by sctbs [123 x ds16 x 33] and [123 x ds16 x 123]. In ADCC-reactions MOLM-13 and purified NK cells were used at an E:T ratio of 10:1 and incubated with the sctb at 1 nM. Three independent experiments with NK cells from three different donors were performed in triplicates. \*Statistically significant differences ( $P < 0.05$ ) in ADCC relative to the control sctb. Dark

1  
2  
3 grey: no scfb; white: control scfb; black: scfb [123 x ds16 x 33]; light grey: scfb [123 x ds16 x  
4  
5  
6 123].  
7  
8  
9

10 **Figure 5:** Antigen-specific induction of ADCC in the double-positive AML cell-line MOLM-  
11  
12 13 by scfb [123 x ds16 x 33]. Scfb [123 x ds16 x 33] induced potent ADCC of MOLM-13  
14  
15 cells at a concentration of 1 nM. Simultaneous addition of a 500-fold molar excess of CD33-  
16  
17 and CD123-specific scFvs each completely blocked the ADCC reaction, but not the addition  
18  
19 of either CD33- or CD123-specific scFv alone, or a control scFv. Simultaneous incubation  
20  
21 with a 125-fold molar excess of 3G8 antibody, but not with a control IgG1 (4G7),  
22  
23 significantly reduced ADCC. Data points represent mean percentage of relative specific lysis  
24  
25 obtained with isolated MNCs from six different healthy donors at an E:T ratio of 40:1.  
26  
27 Specific lysis measured for the scfb [123 x ds16 x 33] was defined as 100%, lysis with no Ab  
28  
29 was defined as 0%. Specific lysis is total lysis minus spontaneous lysis. \*Statistically  
30  
31 significant differences ( $P < 0.05$ ) in ADCC relative to the control scfb.  
32  
33  
34  
35  
36  
37  
38

39 **Figure 6:** Lysis of primary AML cells by scfbs [123 x ds16 x 33], [123 x ds16 x 123] and [33  
40  
41 x ds16 x 33]. Scfbs [123 x ds16 x 33] (closed triangle), [123 x ds16 x 123] (open circle) and  
42  
43 [33 x ds16 x 33] (open triangle) mediated dose-dependent ADCC of primary AML cells,  
44  
45 whereas a control scfb (closed square) failed to induce cellular lysis. (A and B) Induction of  
46  
47 ADCC by scfbs of purified primary AML cells isolated from peripheral blood (patient 1 and  
48  
49 2). (C and D) Induction of ADCC by scfbs of purified primary AML cells isolated from bone  
50  
51 marrow (patient 6 and 7). Data points represent percentage of specific lysis obtained with  
52  
53 isolated MNCs from one healthy donor at an E:T ratio of 40:1. (E) Induction of ADCC by  
54  
55 scfbs at a concentration of 5 nM for all 8 samples. For patients 1 to 6 the cells analysed were  
56  
57 MNCs isolated from peripheral blood. For patients 6 and 7, bone marrow-derived cells were  
58  
59 studied. White bars: control scfb; black bars: scfb [123 x ds16 x 33]; light grey bars: scfb  
60



1  
2  
3 [123 x ds16 x 123]; dark grey bars: sctb [33 x ds16 x 33]. (F) Induction of ADCC by sctbs of  
4  
5 purified AML cells from peripheral blood of 6 different patients (patient 1-6), combined data.  
6  
7 Data points represent mean percentage of specific lysis averaged over the 6 patients obtained  
8  
9 with isolated MNCs from one healthy donor per patient sample at an E:T ratio of 40:1.  
10  
11  
12 Specific lysis is total lysis minus spontaneous lysis.  
13  
14  
15  
16  
17  
18  
19  
20  
21  
22  
23  
24  
25  
26  
27  
28  
29  
30  
31  
32  
33  
34  
35  
36  
37  
38  
39  
40  
41  
42  
43  
44  
45  
46  
47  
48  
49  
50  
51  
52  
53  
54  
55  
56  
57  
58  
59  
60

For Peer Review

Figure 1

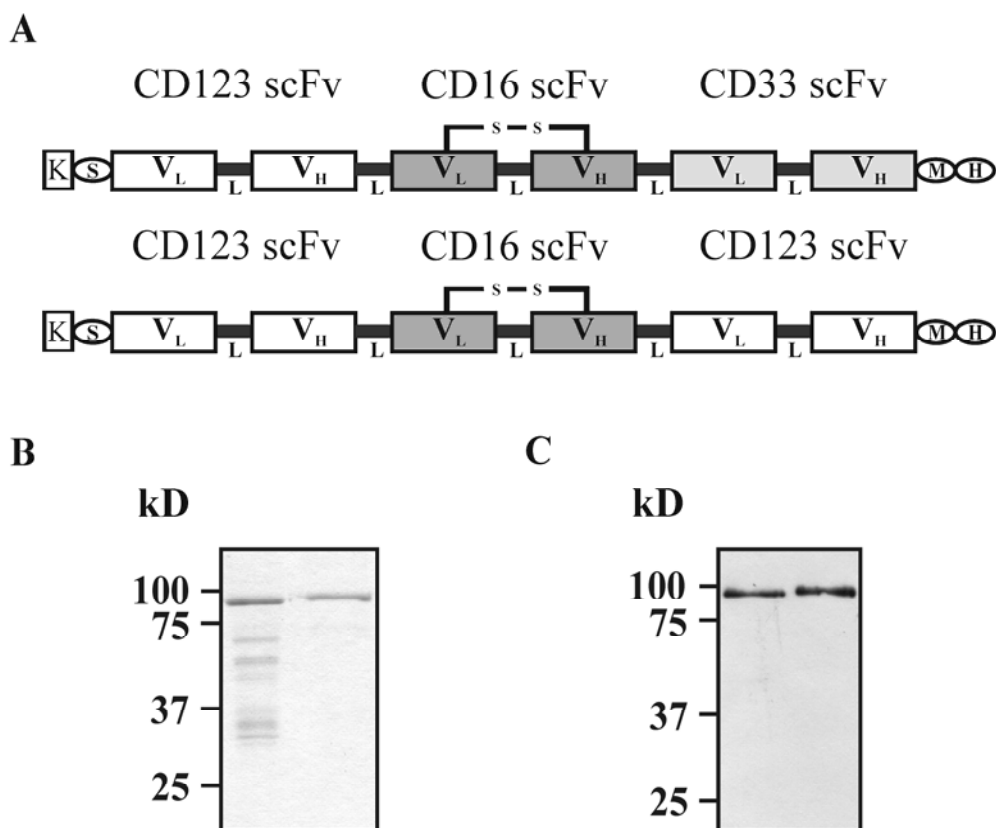


Figure 2

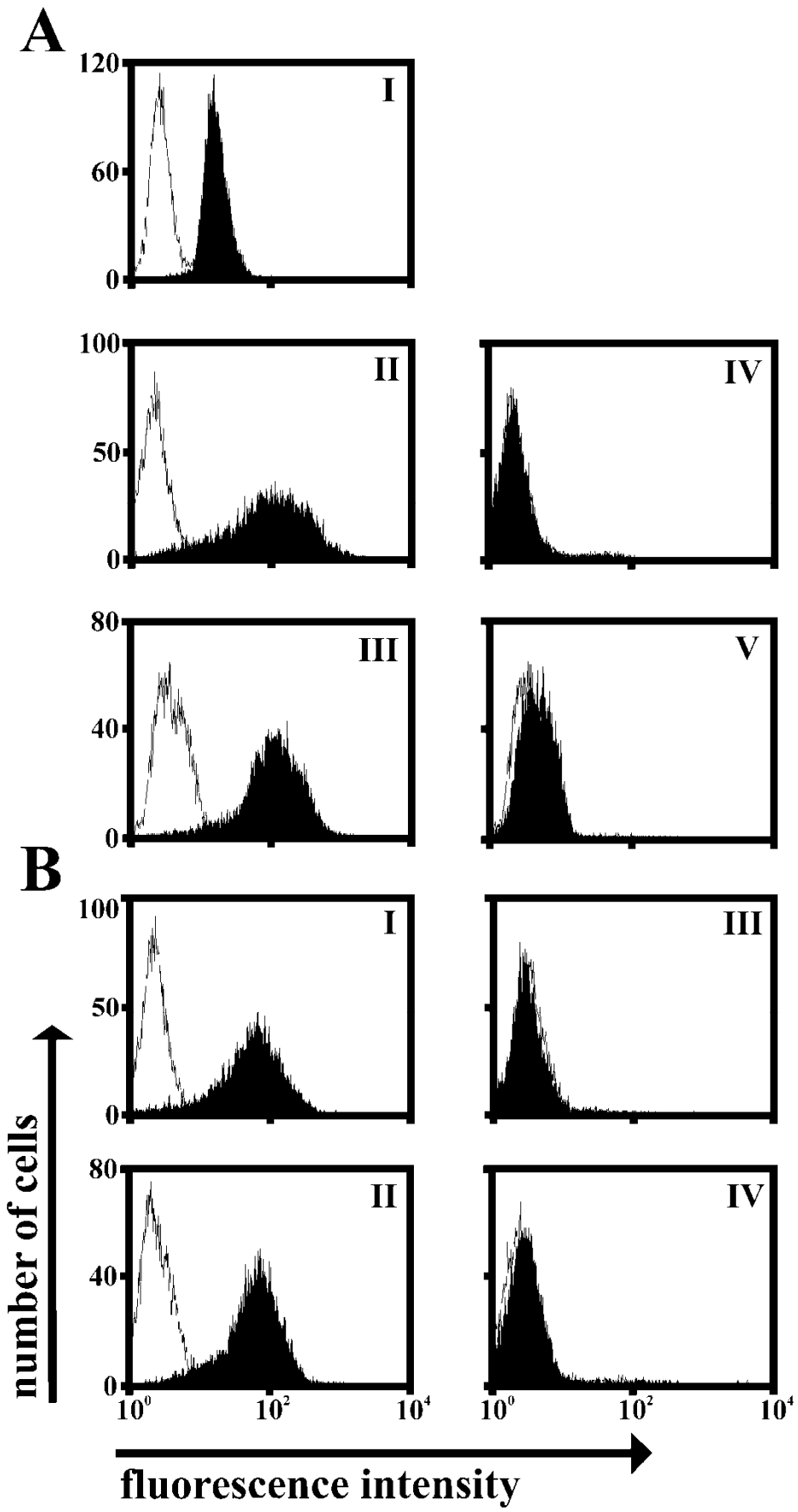


Figure 3

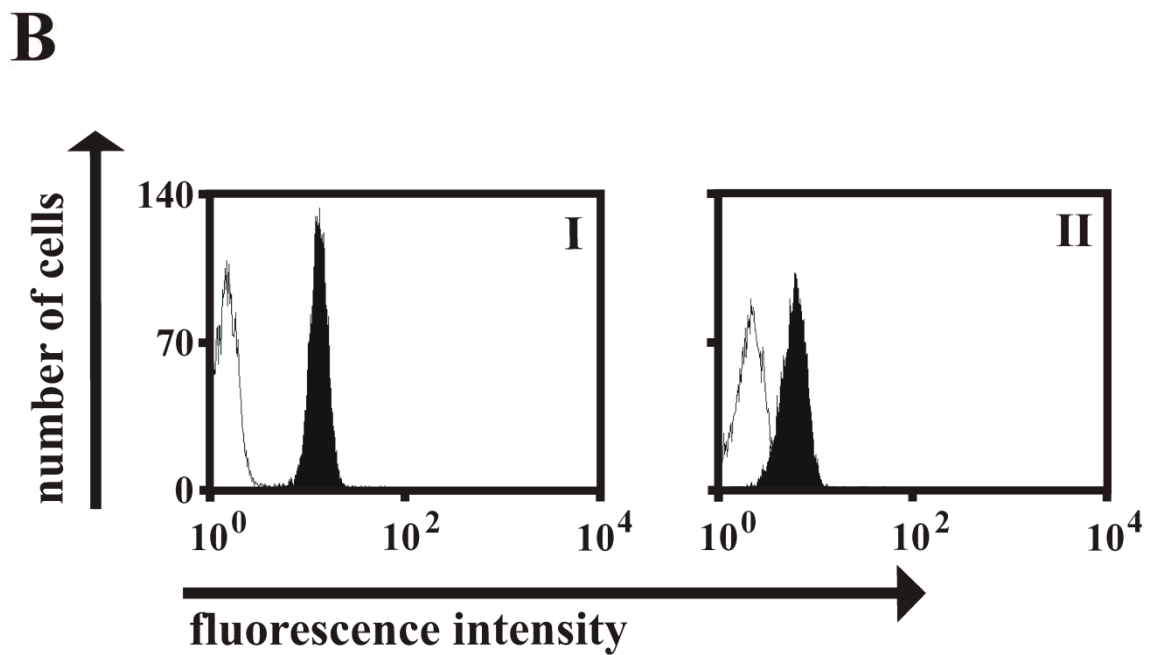
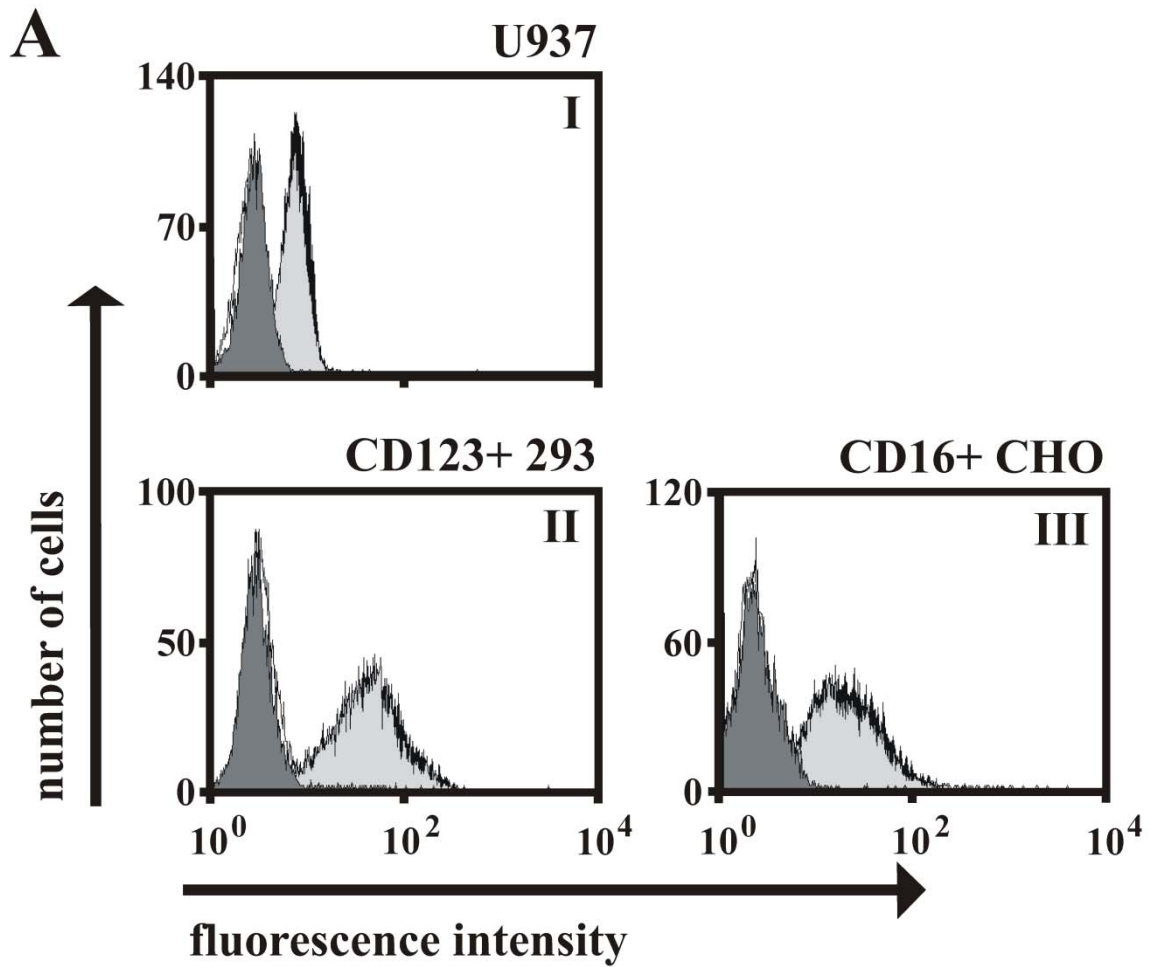


Figure 4

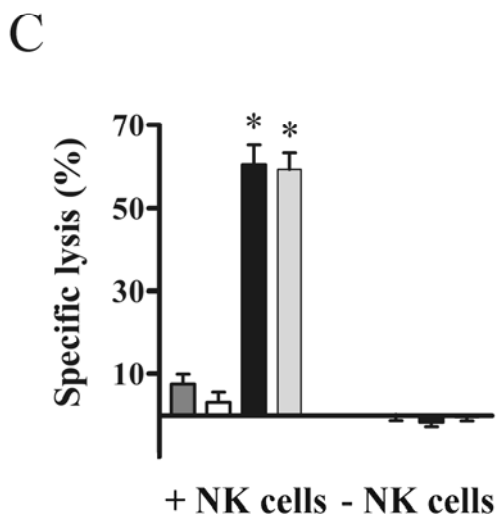
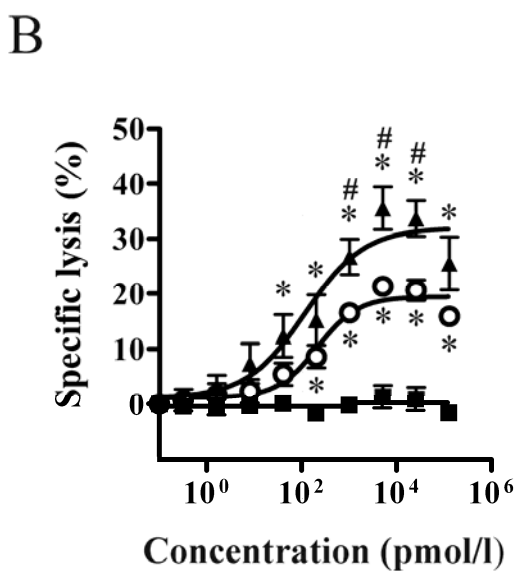
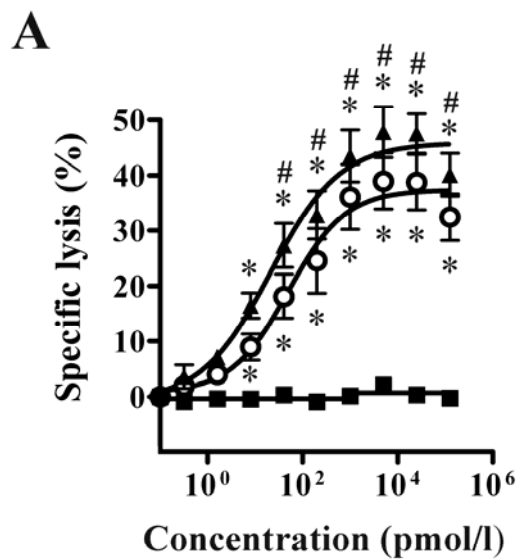


Figure 5

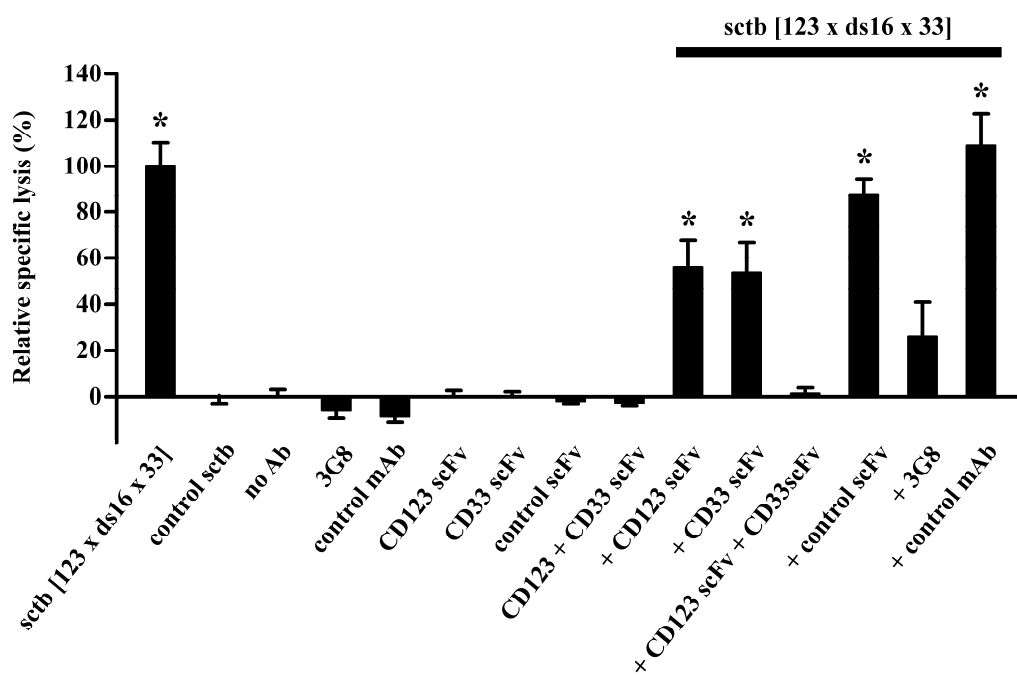
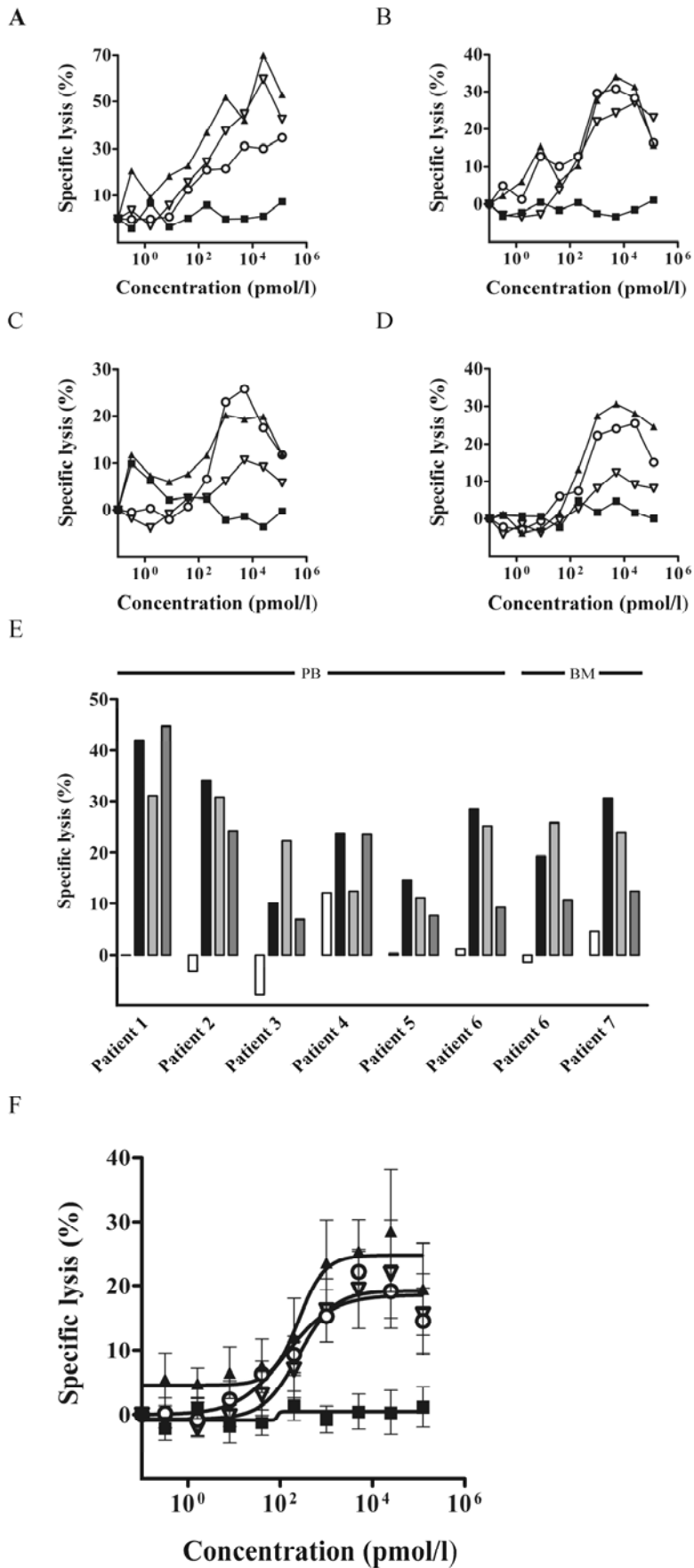


Figure 6



1  
2  
3  
4  
5  
6  
7  
8  
9  
10  
11  
12  
13  
14  
15  
16  
17  
18  
19  
20  
21  
22  
23  
24  
25  
26  
27  
28  
29  
30  
31  
32  
33  
34  
35  
36  
37  
38  
39  
40  
41  
42  
43  
44  
45  
46  
47  
48  
49  
50  
51  
52  
53  
54  
55  
56  
57  
58  
59  
60

Table I: Equilibrium binding constants ( $K_D$ ) and stability in human serum at 37°C for 5 days of the scFvs specific for CD123, CD33 and CD16 contained in the sctbs [123x ds16 x 33] and [123 x ds16 x 123].

	scFv			
	CD16	CD33	CD123	CD33/CD123*
<b>sctb [123 x ds16 x 33]</b>				
$K_D$ (nM)	21.7 ± 1.8	17.8 ± 2.2	18.8 ± 0.9	13.5 ± 0.6
stable in human serum at 37°C	yes	yes	yes	yes
<b>sctb [123 x ds16 x 123]</b>				
$K_D$ (nM)	24.7 ± 3.3	-	6.4 ± 1.1	-
stable in human serum at 37°C	yes	-	yes	-

\* avidity of the entire triplebody for the antigen-combination on double-positive cells

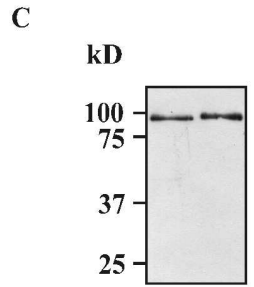
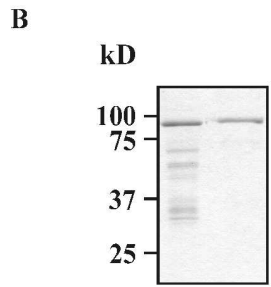
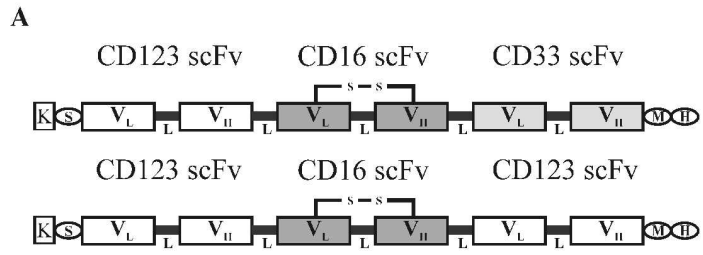
Table II. FAB/WHO classifications and source of primary AML material.

Patient	FAB	WHO	Source
1	M1	AML with mutated NPM1	PB
2	M2	AML with inv(16)	PB
3	M2	AML with Trisomy 14	PB
4	M4	AML with myelodysplasia-related changes	PB
5	punctio sicca	AML with myelodysplasia-related changes with mutated NPM1	PB
6	M2	AML with t(8;21)(q22;q22)	PB/BM
7	M2	Therapy related myeloid leukemia; t(8;21), Chr. 3 abn.	BM

FAB, French-American-British classification; WHO, World Health Organization classification (Vardiman *et al*, 2009); BM, bone marrow; PB, peripheral blood; *punctio sicca*, sterna puncture produced no bone marrow material

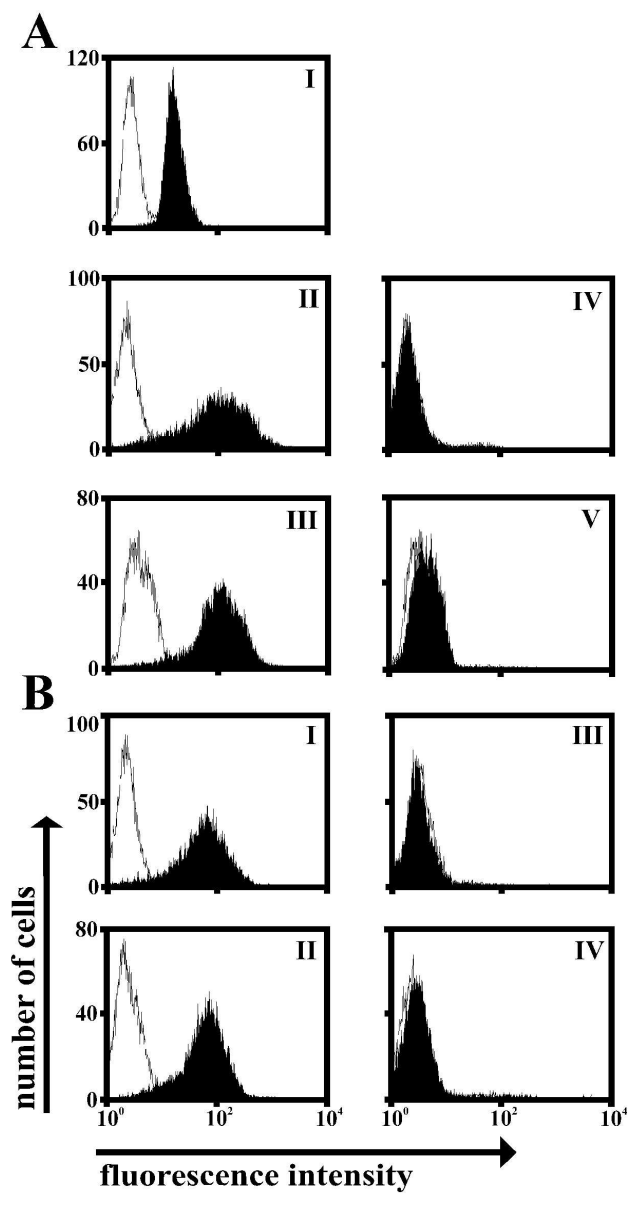


1  
2  
3  
4  
5  
6  
7  
8  
9  
10  
11  
12  
13  
14  
15  
16  
17  
18  
19  
20  
21  
22  
23  
24  
25  
26  
27  
28  
29  
30  
31  
32  
33  
34  
35  
36  
37  
38  
39  
40  
41  
42  
43  
44  
45  
46  
47  
48  
49  
50  
51  
52  
53  
54  
55  
56  
57  
58  
59  
60

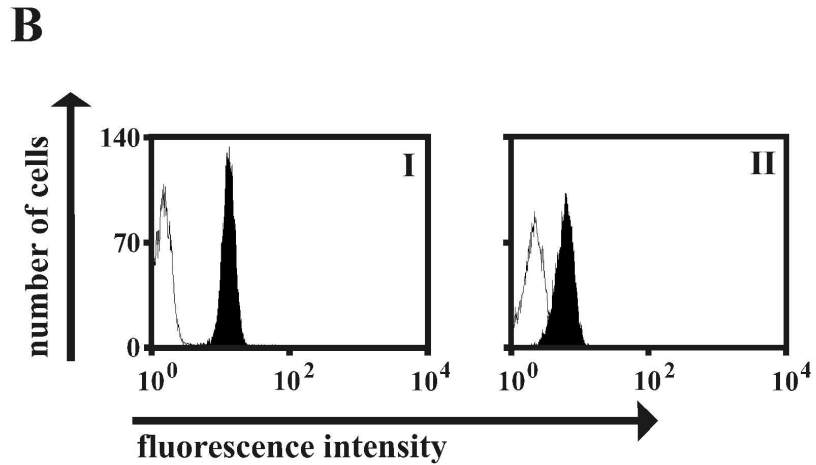
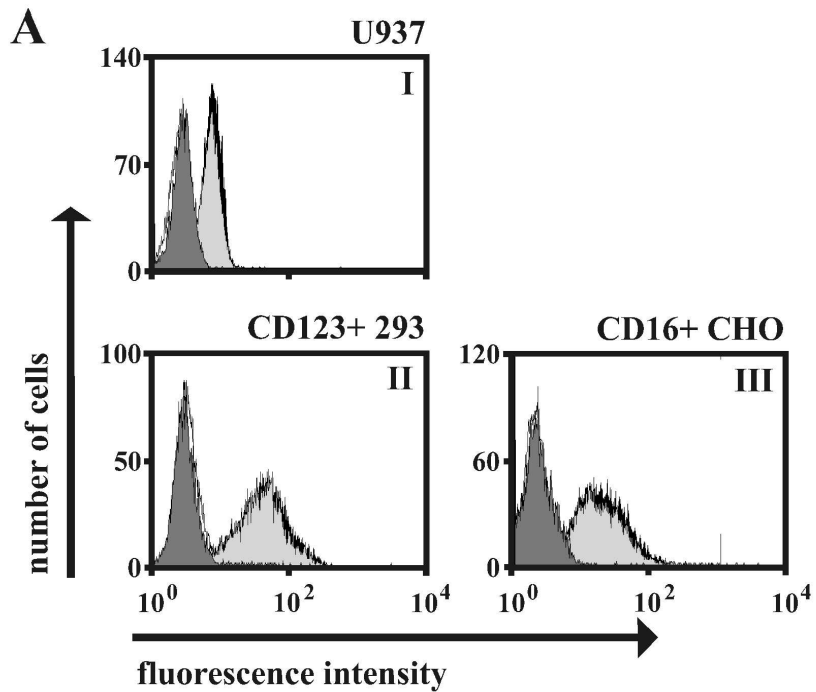


Peer Review

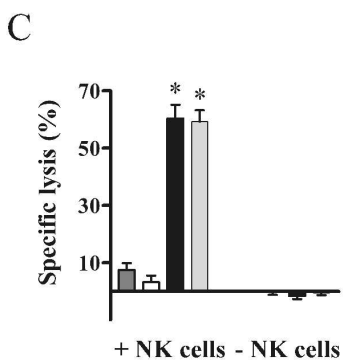
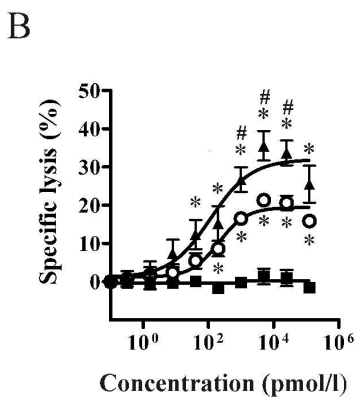
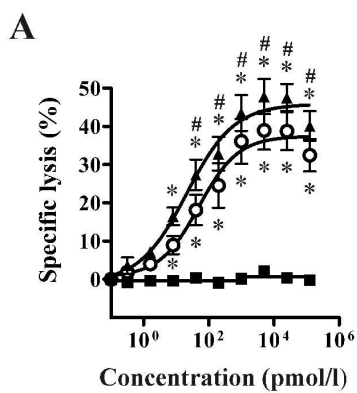
1  
2  
3  
4  
5  
6  
7  
8  
9  
10  
11  
12  
13  
14  
15  
16  
17  
18  
19  
20  
21  
22  
23  
24  
25  
26  
27  
28  
29  
30  
31  
32  
33  
34  
35  
36  
37  
38  
39  
40  
41  
42  
43  
44  
45  
46  
47  
48  
49  
50  
51  
52  
53  
54  
55  
56  
57  
58  
59  
60



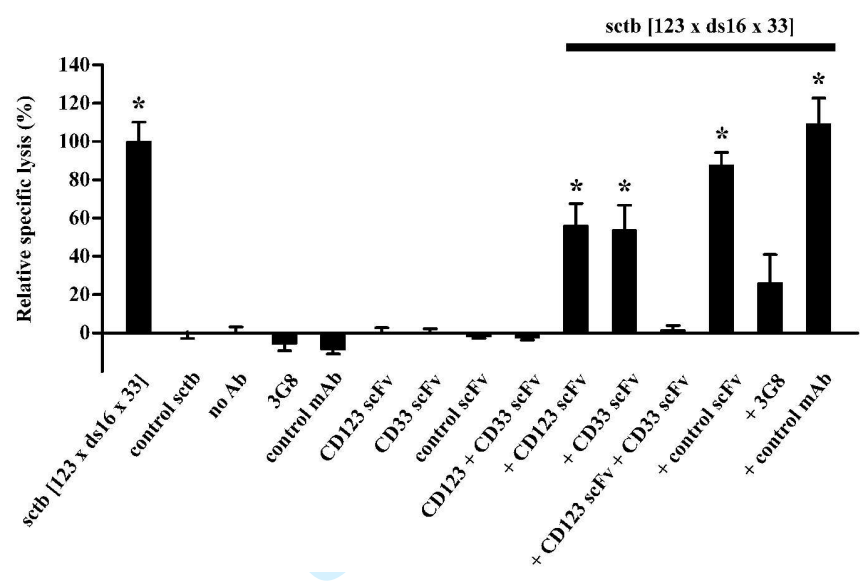
1  
2  
3  
4  
5  
6  
7  
8  
9  
10  
11  
12  
13  
14  
15  
16  
17  
18  
19  
20  
21  
22  
23  
24  
25  
26  
27  
28  
29  
30  
31  
32  
33  
34  
35  
36  
37  
38  
39  
40  
41  
42  
43  
44  
45  
46  
47  
48  
49  
50  
51  
52  
53  
54  
55  
56  
57  
58  
59  
60



1  
2  
3  
4  
5  
6  
7  
8  
9  
10  
11  
12  
13  
14  
15  
16  
17  
18  
19  
20  
21  
22  
23  
24  
25  
26  
27  
28  
29  
30  
31  
32  
33  
34  
35  
36  
37  
38  
39  
40  
41  
42  
43  
44  
45  
46  
47  
48  
49  
50  
51  
52  
53  
54  
55  
56  
57  
58  
59  
60

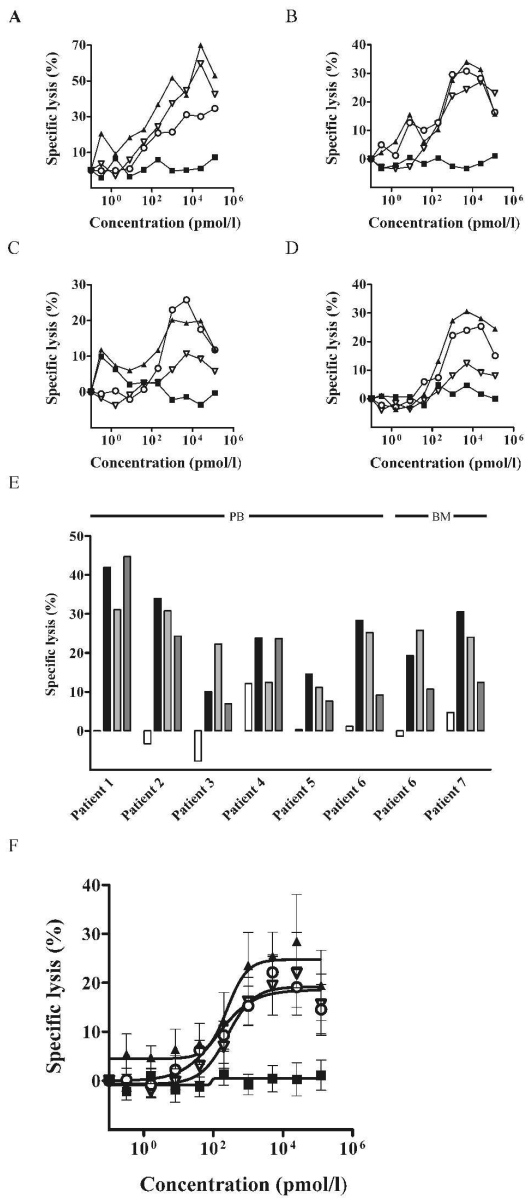


1  
2  
3  
4  
5  
6  
7  
8  
9  
10  
11  
12  
13  
14  
15  
16  
17  
18  
19  
20  
21  
22  
23  
24  
25  
26  
27  
28  
29  
30  
31  
32  
33  
34  
35  
36  
37  
38  
39  
40  
41  
42  
43  
44  
45  
46  
47  
48  
49  
50  
51  
52  
53  
54  
55  
56  
57  
58  
59  
60



Peer Review

1  
2  
3  
4  
5  
6  
7  
8  
9  
10  
11  
12  
13  
14  
15  
16  
17  
18  
19  
20  
21  
22  
23  
24  
25  
26  
27  
28  
29  
30  
31  
32  
33  
34  
35  
36  
37  
38  
39  
40  
41  
42  
43  
44  
45  
46  
47  
48  
49  
50  
51  
52  
53  
54  
55  
56  
57  
58  
59  
60



	CD16	CD33	scFv CD123	CD33/CD123
<b>setb [123 x ds16 x 33]</b>				
$K_D$ (nM)	21.7 ± 1.8	17.8 ± 2.2	18.8 ± 0.9	13.5 ± 0.6
stable in human serum at 37°C	yes	yes	yes	yes
<b>setb [123 x ds16 x 123]</b>				
$K_D$ (nM)	24.7 ± 3.3	-	6.4 ± 1.1	-
stable in human serum at 37°C	yes	-	yes	-

For Peer Review

1  
2  
3  
4  
5  
6  
7  
8  
9  
10  
11  
12  
13  
14  
15  
16  
17  
18  
19  
20  
21  
22  
23  
24  
25  
26  
27  
28  
29  
30  
31  
32  
33  
34  
35  
36  
37  
38  
39  
40  
41  
42  
43  
44  
45  
46  
47  
48  
49  
50  
51  
52  
53  
54  
55  
56  
57  
58  
59  
60

Patient	FAB	WHO	Source
1	M1	AML with mutated NPM1	PB
2	M2	AML with inv(16)	PB
3	M2	AML with Trisomy 14	PB
4	M4	AML with myelodysplasia-related changes	PB
5	punctio sicca	AML with myelodysplasia-related changes with mutated NPM1	PB
6	M2	AML with t(8;21)(q22;q22)	PB/BM
7	M2	Therapy related myeloid leukemia; t(8;21), Chr. 3 abn.	BM

For Peer Review

1  
2  
3  
4  
5  
6  
7  
8  
9  
10  
11  
12  
13  
14  
15  
16  
17  
18  
19  
20  
21  
22  
23  
24  
25  
26  
27  
28  
29  
30  
31  
32  
33  
34  
35  
36  
37  
38  
39  
40  
41  
42  
43  
44  
45  
46  
47  
48  
49  
50  
51  
52  
53  
54  
55  
56  
57  
58  
59  
60