



HAL
open science

Transanal endoscopic microsurgery versus total mesorectal excision of T1 rectal adenocarcinomas with curative intention

E.J.R. de Graaf, P.G. Doornebosch, R.A.E.M. Tollenaar, E. Meershoek-Klein Kranenbarg, A.C. de Boer, F.C. Bekkering, C.J.H. van de Velde

► **To cite this version:**

E.J.R. de Graaf, P.G. Doornebosch, R.A.E.M. Tollenaar, E. Meershoek-Klein Kranenbarg, A.C. de Boer, et al.. Transanal endoscopic microsurgery versus total mesorectal excision of T1 rectal adenocarcinomas with curative intention. *EJSO - European Journal of Surgical Oncology*, 2009, 35 (12), pp.1280. 10.1016/j.ejso.2009.05.001 . hal-00556304

HAL Id: hal-00556304

<https://hal.science/hal-00556304>

Submitted on 16 Jan 2011

HAL is a multi-disciplinary open access archive for the deposit and dissemination of scientific research documents, whether they are published or not. The documents may come from teaching and research institutions in France or abroad, or from public or private research centers.

L'archive ouverte pluridisciplinaire **HAL**, est destinée au dépôt et à la diffusion de documents scientifiques de niveau recherche, publiés ou non, émanant des établissements d'enseignement et de recherche français ou étrangers, des laboratoires publics ou privés.

Accepted Manuscript

Title: Transanal endoscopic microsurgery versus total mesorectal excision of T1 rectal adenocarcinomas with curative intention

Authors: E.J.R. De Graaf, P.G. Doornebosch, R.A.E.M. Tollenaar, E. Meershoek-Klein Kranenbarg, A.C. de Boer, F.C. Bekkering, C.J.H. van de Velde



PII: S0748-7983(09)00160-7

DOI: [10.1016/j.ejsoc.2009.05.001](https://doi.org/10.1016/j.ejsoc.2009.05.001)

Reference: YEJSO 2833

To appear in: *European Journal of Surgical Oncology*

Received Date: 24 March 2009

Revised Date: 4 May 2009

Please cite this article as: De Graaf EJR, Doornebosch PG, Tollenaar RAEM, Kranenbarg EM-K, de Boer AC, Bekkering FC, van de Velde CJH. Transanal endoscopic microsurgery versus total mesorectal excision of T1 rectal adenocarcinomas with curative intention, *European Journal of Surgical Oncology* (2009), doi: 10.1016/j.ejsoc.2009.05.001

This is a PDF file of an unedited manuscript that has been accepted for publication. As a service to our customers we are providing this early version of the manuscript. The manuscript will undergo copyediting, typesetting, and review of the resulting proof before it is published in its final form. Please note that during the production process errors may be discovered which could affect the content, and all legal disclaimers that apply to the journal pertain.

Transanal endoscopic microsurgery versus total mesorectal excision of T1 rectal adenocarcinomas with curative intention

E.J.R. De Graaf^a, P.G. Doornebosch^a, R.A.E.M. Tollenaar^b, E. Meershoek-Klein Kranenbarg^b,
A.C. de Boer^c, F.C. Bekkering^d, C.J.H. van de Velde^b

^aDepartment of General Surgery, IJsselland Hospital, Capelle aan den IJssel, The Netherlands

^bDepartment of General Surgery, Leiden University Medical Centre, Leiden, The Netherlands

^cDepartment of Internal Medicine, IJsselland Hospital, Capelle aan den IJssel, The Netherlands

^dDepartment of Gastroenterology, IJsselland Hospital, Capelle aan den IJssel, The Netherlands

Correspondence to:

E.J.R. de Graaf, PhD.

Department of Surgery

IJsselland Hospital

P.O. Box 690

2900 AR Capelle aan den IJssel

The Netherlands

Tel : +31-10-2585066

Fax : +31-10-2585064

E-mail : EdGraaf@ysl.nl

Abstract

Purpose

After total mesorectal excision (TME) for rectal cancer, pathology is standardized with margin status as a predictor for recurrence. This has yet to be implemented after transanal endoscopic microsurgery (TEM) and was investigated prospectively for T1 rectal adenocarcinomas.

Patients and Methods

Eighty patients after TEM were compared to 75 patients after TME. The study protocol included standardized pathology. TEM patients were eligible when excision margins were negative.

Results

TEM was safer than TME as reflected by operating time, blood loss, hospital stay, morbidity, re-operation rate and stoma formation (all $P < .001$). Mortality after TEM was 0% and after TME 4%. At 5 years after TEM and TME, both overall survival (TEM 75% v TME 77%, $P = 0.9$) and cancer specific survival (TEM 90% v TME 87%, $P = 0.5$) were comparable. Local recurrence rate after TEM was 24% and after TME 0% (HR 79.266, 95% CI, 1.208 to 5202, $P < .0001$).

Conclusion

For T1 rectal adenocarcinomas TEM is much safer than TME and survival is comparable. After TEM local recurrence rate is substantial, despite negative excision margins.

Keywords: T1 rectal cancer; Transanal endoscopic microsurgery; Total mesorectal excision; TEM; TME; Survival

Introduction

In rectal cancer, total mesorectal excision (TME) is the gold standard. This optimised and standardized surgical technique, combined with preoperative radiotherapy, has improved outcome. (1, 2) Counterbalancing this improvement is the high rate of (severe) morbidity and even mortality. (3-6) Local excision of rectal adenocarcinomas is a much safer procedure and transanal excision (TE) is the technique most commonly used. However, transanal endoscopic microsurgery (TEM) is nowadays considered the method of choice. (7) Only in T1 rectal adenocarcinomas TEM is considered adequate if curation is intended.

Quirke showed that standardized processing of resection specimens for rectal adenocarcinomas revealed a higher percentage of incomplete excision, which significantly correlated to an increased risk on both local and distant recurrences and on decreased survival.(8) This resulted in the concept of TME and adjustment of histological examination of the specimen. Although TEM is being implemented in several national guidelines for T1 rectal adenocarcinomas, the role of pathological assessment of the specimen has been limited mainly to basic histopathologic criteria. (9) Excision margin status after both TE and TEM, has been demonstrated to be a predictor for local recurrence, however, this has only been shown in case studies. (10-12) Most studies comparing outcome after local excision for T1 rectal adenocarcinomas with TME do not focus on excision margin status. Moreover, standardized pathological assessment lacks, and this may have caused the varying outcome. (13-18)

As the incidence of T1 and T2 rectal cancer will most likely increase in the near future, because of introduction of population-based screening programs, this warrants a thorough analysis of oncologic outcome following TEM for T1 rectal adenocarcinomas. (19) The aim of this prospective study was to compare the impact of margin status, assessed with standardized pathology after TEM and TME for T1 rectal cancer.

Patients and methods

The Dutch TME trial started in 1996, and 1530 Dutch patients with mobile rectal adenocarcinomas were randomly assigned either to short term preoperative radiotherapy followed by TME or to TME alone. The study protocol included standardized processing of the specimen, described in detail elsewhere. (20) Only T1 rectal adenocarcinomas were considered eligible for this study. In the IJsselland hospital, a tertiary referral centre for TEM and participating in the Dutch TME trial, patients with T1 rectal adenocarcinomas were also deemed feasible for TEM. Selection was based upon the same study protocol, with complementary rigid rectoscopy and endorectal ultrasound (ERUS). Eligibility for the current study was in accordance with the Dutch TME trial protocol with some exceptions. Patients who underwent TME and had synchronous distant metastases, only discovered at laparotomy, were not excluded, because if TEM had been therapy of choice, metastases would not have been disclosed. Furthermore, patients who previously underwent pelvic operations or resections of left-sided large bowel or rectum were not excluded. For TEM patients World Health Organisation Performance Score (WPS) was not a criterion (in the Dutch TME trial WPS limited to 2 or less was an inclusion criterion). TEM patients were only eligible if there were no signs of lymph node metastases on MRI and/or ERUS and excision margins were negative.

If T1 rectal cancer only emerged at histology of the excised specimen following TEM, patients were offered follow-up only or immediate additional TME. In case excision margins were positive following TEM, patients also were offered immediate TME or intensive follow up after repeat TEM, in order to obtain negative excision margins. The TEM technique is described in detail elsewhere.(21)

Pathological analysis of the specimen

Tumour size after TEM as well as TME was assigned as the largest diameter. TEM specimens were pinned onto a cork board before fixation. Fixation, serial transverse slicing, embedding, staining, sectioning and examination of the specimens were done according to descriptions detailed elsewhere. (8, 20)

Follow-up

Both groups were followed according to the Dutch TME trial protocol. Moreover, rigid rectoscopy and endorectal ultrasound were performed at every visit except for the colonoscopy visit in the TEM patients. Endpoints studied were morbidity, mortality, margin status, local recurrence, distant recurrence, overall survival and cancer specific survival. Local recurrence was defined as evidence of a tumour within the lesser pelvis. Distant recurrence was defined as evidence of a tumour in any other area. In all patients in this study informed consent had been obtained.

Statistical methods

Data were analyzed with SPSS statistical software (version 14.0 for Windows, SPSS, Chicago). Chi-square tests were used to compare proportions. Mann-Whitney tests were used to compare continue variables. Univariate analyses of cumulative probability of local and distal recurrence, as well as overall and cancer-specific survival were carried out by the Kaplan-Meier method, and the evaluation of differences between the two groups was performed with the log-rank test. The Cox proportional hazards model was used to calculate hazard ratios and 95% confidence intervals in the univariate and multivariate analyses. A two-sided *P*-value of 0.05 or less indicated statistical significance.

Results

Patient characteristics

Of the 1530 Dutch patients entered in the TME trial, a total of 76 patients with T1 rectal adenocarcinomas were present (5%). One patient was excluded because of a second malignancy. Seventy-five patients were eligible for this study. In 1 patient excision margin was positive (1.3%). In 86 patients TEM was performed for T1 rectal adenocarcinomas. In 5 patients excision margins were positive (5.8%). Six patients, including 2 patients with incomplete margins, chose for additional TME and were excluded. Eighty patients were entered in the study, including the remaining 3 patients with initial positive excision margins. TEM was repeated in these patients, no residual tumour tissue was found and excision margin was considered negative. Patient, tumour and operation characteristics are depicted in Table 1. Both groups were comparable, except that TEM patients had higher WPS pre-operatively ($P < .001$).

Operation characteristics

TEM proved to be safer compared to TME reflected by operating time, blood loss, hospital stay, morbidity, re-operations and stoma formation (all $P < .001$). Complications after TEM were present in 5 patients (5.8%). In three patients a urinary tract infection occurred, and one patient with a cardiac history suffered from cardiac pain and dysrhythmia leading to medical treatment on the coronary care unit. In one patient, following a segmental resection, anastomotic stenosis with disabling complaints occurred. Hegar dilation proved unsuccessful necessitating renewed TEM for correction (1.2%). Histopathologic evaluation only showed fibrosis. After TME, 48 patients suffered from 72 complications (64%). The majority was severe, necessitating re-operations in 13.3% of all patients (anastomotic leakage 6.9%, re-bleeding 9.3% and ileus 6.7%). In 58 patients a primary anastomosis was constructed, with a diverting ileostomy in 44. In two patients a Hartmann's procedure was performed and in 15

patients an abdomino-perineal excision. A stoma was constructed during re-operation in another 2 patients. Ten out of 44 diverting ileostomies have never been reversed and in 5 patients after reversal again a stoma was constructed resulting in 43% of the TME patients having a definite stoma at the time of evaluation. Following TEM, four (5%) patients had a colostomy, because of a local recurrence necessitating salvage surgery (Table 3a). There was no mortality after TEM, and after TME 4% of patients died ($P=0.07$).

Local and distant recurrences

Median follow up after TEM was 42 months (range, 1-127) and after TME 84 months (range, 30-115). Local recurrence rate was 24% after TEM compared to 0% after TME patients ($P < .0001$; Figure 1). Details of local and distant recurrences following TEM and TME are given in table 3. After TEM 15 local recurrences were observed of which 13 were diagnosed within the first 18 months (86.7%). Median time to local recurrence was 10 months (range, 5-50). In 12 patients (80%) salvage surgery was performed, limited to TME, without mortality and without renewed local recurrences. Distant metastases developed in 6 patients. None of the TEM patients without local recurrence developed distant metastases or died cancer-related. After TME 6 patients developed distant recurrences.

Survival rates

Overall survival was 75% after TEM and 77% after TME ($P = 0.9$; Figure 2). Cancer specific survival was 90% after TEM and 87% after TME ($P = 0.5$; Figure 3). In regard to both overall survival and cancer-specific survival, neither surgical technique used, age, gender or WPS were risk factors.

Discussion

After TME for rectal adenocarcinomas, morbidity varies from 10 to 62%, and mortality varies from 3.3 to 25.8%. (1-6) Morbidity is often severe, especially if preoperative radiotherapy is added. Long-term functional outcome is poor, having major impact on quality of life.

Reduced morbidity and mortality is often the motive for local excision in rectal adenocarcinomas. Morbidity is predominantly minor, occasionally leading to re-operation and formation of a stoma and without functional disorders having impact on quality of life. (22) Morbidity and mortality in this study are in line with literature and again demonstrate the safety of TEM and the consequences of TME. This is even reinforced by the fact TEM patients had worse WPS compared to TME patients.

However, morbidity should not be the main endpoint measured when choosing between two operation techniques for rectal adenocarcinomas. After local excision of rectal adenocarcinomas, outcome varies strikingly, even when limited to T1 rectal adenocarcinomas. As a result, it is looked at with caution and most authors emphasize its adoption only in carefully selected patients. (23)

Impact of excision margin status upon outcome

Microscopic radical excision is a prerequisite to diminish recurrences after TME for rectal cancer. (8) Standardized histological examination revealed a higher percentage of incomplete resection with significant correlation to an increased risk on both local and distant recurrences and on decreased survival. This resulted in the concept of TME and adjustment of histological examination of the TME specimen. Excision margin status after local excision is also a significant prognostic factor. In 1990 Graham concluded that after local excision positive excision margins were associated with increased local recurrence rates and decreased survival. (11) Also in case studies on TEM, excision margin status has proven to be a predictor for recurrence. (10, 12) However, comparative studies, focusing on TE or TEM and

TME for T1 rectal adenocarcinomas, are subject to possible bias as patient selection criteria and (neo-)adjuvant strategies are not elucidated. Furthermore, the method of histological investigation remains unclear and the presence of incomplete or doubtful margins was not an exclusion criterion.

Unprotocollized histopathologic evaluation leads to underestimation of positive excision margins. (12, 24) With TEM, even with standardized histopathologic evaluation, negative excision margins can be obtained in over 90% of specimens. (25) This may be one of the most contributing factors to improved oncologic outcome following TEM, compared to after TE. (16) This hypothesis warranted the current study.

Regarding survival, we found that if negative excision margins are confirmed by thorough, protocollized histopathologic evaluation, no differences between TEM or TME occurred. This is in line with all other comparative studies of TEM and TME. (16-18) Following TME never a local recurrence occurred, and after TEM, despite a 100% negative excision margin status, local recurrence rate was 24%. This is higher than the 4.1 to 10% observed by other TEM centres and even higher to the 4 to 18% after TE. A possible explanation for this result has yet to be clarified.

Local recurrences following local excision

Focussing on prevention of local recurrence after local excision of rectal cancer is caused by the fact that local recurrences after radical excision are difficult to treat with many renewed local recurrences and poor prognosis. (26) Literature on salvage surgery for local recurrence after local excision is limited. Most series lack both an adequate number of patients undergoing salvage procedures and adequate follow-up to allow proper analysis. It only concerns local recurrences following TE as technique used. (27, 28) Disease free survival rates following salvage procedures range between 30-58%. Moreover, to obtain a R0 resection, extended resections are required, often involving multivisceral excision. Results

after salvage surgery are worse compared to after immediate salvage surgery in case of adverse histopathologic features. (10, 24, 29) Salvage surgery in case of a local recurrence following TEM seems amenable to most patients, with often a possible R0 resection. In this study, of 15 local recurrences 12 were amenable to salvage surgery (80%), of which in 11 (92%) a R0 resection could be obtained by performing a TME. Maybe the elegant and precise technique of TEM is the key element for these results. Or perhaps it was the early detection due to the intensive follow-up. About 90 per cent of recurrences were diagnosed within 18 months. Moreover, about 25% of the local recurrences were diagnosed only with endorectal ultrasound as described by others. (30)

Conclusions

TEM is a safer procedure than TME for T1 rectal adenocarcinomas. Despite obtaining a negative excision margin status, local recurrence rate is still unacceptably high and efforts should be made to investigate prognostic factors. Survival rates are comparable after TEM and TME, although long-term results have to be awaited. Salvage surgery for local recurrences is possible, however future studies are needed to spare as many patients as possible from the adverse effects of TME.

Conflict of interest

The authors state that they have no conflict of interest.

References

1. Kapiteijn E, Putter H, van de Velde CJ. Impact of the introduction and training of total mesorectal excision on recurrence and survival in rectal cancer in The Netherlands. *Br J Surg*. 2002 Sep;89(9):1142-9.
2. Peeters KC, Marijnen CA, Nagtegaal ID, Kranenbarg EK, Putter H, Wiggers T, et al. The TME trial after a median follow-up of 6 years: increased local control but no survival benefit in irradiated patients with resectable rectal carcinoma. *Ann Surg*. 2007 Nov;246(5):693-701.
3. Marijnen CA, Kapiteijn E, van de Velde CJ, Martijn H, Steup WH, Wiggers T, et al. Acute side effects and complications after short-term preoperative radiotherapy combined with total mesorectal excision in primary rectal cancer: report of a multicenter randomized trial. *J Clin Oncol*. 2002 Feb 1;20(3):817-25.
4. Peeters KC, van de Velde CJ, Leer JW, Martijn H, Junggeburst JM, Kranenbarg EK, et al. Late side effects of short-course preoperative radiotherapy combined with total mesorectal excision for rectal cancer: increased bowel dysfunction in irradiated patients--a Dutch colorectal cancer group study. *J Clin Oncol*. 2005 Sep 1;23(25):6199-206.
5. Marijnen CA, van de Velde CJ, Putter H, van den Brink M, Maas CP, Martijn H, et al. Impact of short-term preoperative radiotherapy on health-related quality of life and sexual functioning in primary rectal cancer: report of a multicenter randomized trial. *J Clin Oncol*. 2005 Mar 20;23(9):1847-58.
6. Rutten HJ, den Dulk M, Lemmens VE, van de Velde CJ, Marijnen CA. Controversies of total mesorectal excision for rectal cancer in elderly patients. *Lancet Oncol*. 2008 May;9(5):494-501.
7. Middleton PF, Sutherland LM, Maddern GJ. Transanal endoscopic microsurgery: a systematic review. *Dis Colon Rectum*. 2005 Feb;48(2):270-84.
8. Quirke P, Durdey P, Dixon MF, Williams NS. Local recurrence of rectal adenocarcinoma due to inadequate surgical resection. Histopathological study of lateral tumour spread and surgical excision. *Lancet*. 1986 Nov 1;2(8514):996-9.
9. www.nccn.org/professionals/physician_gls/PDF/rectal.pdf.
10. Borschitz T, Heintz A, Junginger T. The Influence of Histopathologic Criteria on the Long-Term Prognosis of Locally Excised pT1 Rectal Carcinomas: Results of Local Excision (Transanal Endoscopic Microsurgery) and Immediate Reoperation. *Dis Colon Rectum*. 2006 Aug 4.
11. Graham RA, Garnsey L, Jessup JM. Local excision of rectal carcinoma. *Am J Surg*. 1990 Sep;160(3):306-12.
12. Steele GD, Jr., Herndon JE, Bleday R, Russell A, Benson A, 3rd, Hussain M, et al. Sphincter-sparing treatment for distal rectal adenocarcinoma. *Ann Surg Oncol*. 1999 Jul-Aug;6(5):433-41.
13. Bentrem DJ, Okabe S, Wong WD, Guillem JG, Weiser MR, Temple LK, et al. T1 adenocarcinoma of the rectum: transanal excision or radical surgery? *Ann Surg*. 2005 Oct;242(4):472-7; discussion 7-9.
14. Endreth BH, Myrvold HE, Romundstad P, Hestvik UE, Bjerkeset T, Wibe A. Transanal excision vs. major surgery for T1 rectal cancer. *Dis Colon Rectum*. 2005 Jul;48(7):1380-8.
15. You YN, Baxter NN, Stewart A, Nelson H. Is the increasing rate of local excision for stage I rectal cancer in the United States justified?: a nationwide cohort study from the National Cancer Database. *Ann Surg*. 2007 May;245(5):726-33.
16. Langer C, Liersch T, Suss M, Siemer A, Markus P, Ghadimi BM, et al. Surgical cure for early rectal carcinoma and large adenoma: transanal endoscopic microsurgery (using ultrasound or electrosurgery) compared to conventional local and radical resection. *Int J Colorectal Dis*. 2003 May;18(3):222-9.
17. Heintz A, Morschel M, Junginger T. Comparison of results after transanal endoscopic microsurgery and radical resection for T1 carcinoma of the rectum. *Surg Endosc*. 1998 Sep;12(9):1145-8.
18. Winde G, Nottberg H, Keller R, Schmid KW, Bunte H. Surgical cure for early rectal carcinomas (T1). Transanal endoscopic microsurgery vs. anterior resection. *Dis Colon Rectum*. 1996 Sep;39(9):969-76.
19. Single flexible sigmoidoscopy screening to prevent colorectal cancer: baseline findings of a UK multicentre randomised trial. *Lancet*. 2002 Apr 13;359(9314):1291-300.
20. Kapiteijn E, Kranenbarg EK, Steup WH, Taat CW, Rutten HJ, Wiggers T, et al. Total mesorectal excision (TME) with or without preoperative radiotherapy in the treatment of primary rectal cancer. Prospective randomised trial with standard operative and histopathological techniques. Dutch ColoRectal Cancer Group. *Eur J Surg*. 1999 May;165(5):410-20.
21. de Graaf EJ. Transanal endoscopic microsurgery. *Scand J Gastroenterol Suppl*. 2003(239):34-9.
22. Doornebosch PG, Gosselink MP, Neijenhuis PA, Schouten WR, Tollenaar RA, de Graaf EJ. Impact of transanal endoscopic microsurgery on functional outcome and quality of life. *Int J Colorectal Dis*. 2008 Jul;23(7):709-13.

23. Garcia-Aguilar J, Mellgren A, Sirivongs P, Buie D, Madoff RD, Rothenberger DA. Local excision of rectal cancer without adjuvant therapy: a word of caution. *Ann Surg*. 2000 Mar;231(3):345-51.
24. Hahnloser D, Wolff BG, Larson DW, Ping J, Nivatvongs S. Immediate radical resection after local excision of rectal cancer: an oncologic compromise? *Dis Colon Rectum*. 2005 Mar;48(3):429-37.
25. de Graaf EJ, Doornebosch PG, Stassen LP, Debets JM, Tetteroo GW, Hop WC. Transanal endoscopic microsurgery for rectal cancer. *Eur J Cancer*. 2002 May;38(7):904-10.
26. van den Brink M, Stiggelbout AM, van den Hout WB, Kievit J, Klein Kranenbarg E, Marijnen CA, et al. Clinical nature and prognosis of locally recurrent rectal cancer after total mesorectal excision with or without preoperative radiotherapy. *J Clin Oncol*. 2004 Oct 1;22(19):3958-64.
27. Friel CM, Cromwell JW, Marra C, Madoff RD, Rothenberger DA, Garcia-Aguilar J. Salvage radical surgery after failed local excision for early rectal cancer. *Dis Colon Rectum*. 2002 Jul;45(7):875-9.
28. Weiser MR, Landmann RG, Wong WD, Shia J, Guillem JG, Temple LK, et al. Surgical salvage of recurrent rectal cancer after transanal excision. *Dis Colon Rectum*. 2005 Jun;48(6):1169-75.
29. Baron PL, Enker WE, Zakowski MF, Urmacher C. Immediate vs. salvage resection after local treatment for early rectal cancer. *Dis Colon Rectum*. 1995 Feb;38(2):177-81.
30. Ramirez JM, Mortensen NJ, Takeuchi N, Humphreys MM. Endoluminal ultrasonography in the follow-up of patients with rectal cancer. *Br J Surg*. 1994 May;81(5):692-4.

| | TEM | TME | P |
|-----------------------------|--------------|-----------------|---------|
| n | 80 | 75 | |
| Age (yrs) | 71 (44-92) | 67 (48-83) | ns |
| Female: male | 32: 48 | 27: 48 | ns |
| WPS 0: 1: 2/3 | 42: 18: 20 | 60: 14: 0 | 0.001 |
| Tumour diameter (cm) | 3.0 (0.5-13) | 2.5 (0.5-7.5) | ns |
| Tumour distance (cm) | 8.0 (0-15) | 7.0 (0-15) | ns |
| 0-5 | 17 | 14 | |
| 5-10 | 44 | 34 | |
| 10-15 | 18 | 25 | |
| Operating time (min) | 40 (10-125) | 180 (70-360) | < 0.001 |
| Blood loss (ml) | 0 (0-250) | 1000 (50-15000) | < 0.001 |
| Hospital stay (days) | 3 (2-13) | 14 (7-121) | < 0.001 |
| Morbidity (%) | 5 (5.1) | 48 (64) | < 0.001 |
| -surgical complications | | | |
| -abdominal wound dehiscence | 0 | 1 (1.3) | |
| -perineal wound dehiscence | 0 | 1 (1.3) | |
| -intestinal necrosis | 0 | 4 (6.9) | |
| -ileus | 0 | 7 (9.3) | |
| -anastomotic leakage | 1 (1.2) | 3 (4) | |
| -re-bleeding | | | |
| -other | 0 | 8 (10.7) | |
| -infections | 0 | 2 (2.7) | |
| -abdominal wound | 3 (3.4) | 10 (13.3) | |
| -perineal wound | 0 | 2 (2.6) | |
| -urinary tract | 0 | 4 (5.3) | |
| -intra-abdominal abscess | 0 | 2 (2.6) | |
| -sepsis | 0 | 1 (1.3) | |
| -other | | | |
| -febris e causa ignota | 0 | 1 (1.3) | |
| -general complications | 0 | 6 (8) | |
| -venous thrombosis | 0 | 3 (4) | |
| -pulmonary | 1 (1.2) | 2 (2.6) | |
| -embolism | 0 | 7 (9.3) | |
| -cardiac | 0 | 1 (1.3) | |
| -other | 0 | 1 (1.3) | |
| -delirium | | | |
| -multi organ failure | | | |
| Re-operations (%) | 1 (1.2) | 10 (13.3) | < 0.001 |
| Stoma formation (%) | 0 | 61 (81.3) | |
| -at first operation | 0 | 59 (78.7) | < 0.001 |
| -at re-operation | 0 | 2 (2.6) | |
| Mortality (%) | 0 | 3 (4.0) | 0.07 |

Table 1. Patient-, tumour- and operation characteristics of the patients enrolled in the study.

WPS = World Health Organisation Performance Score; data given are numbers or medians with ranges between parentheses.

Morbidity = number of patients with one or more complications; anastomotic leakage in 4 out of 58 patients with a primary anastomosis; data given are numbers or medians with ranges or percentages between parentheses.

| Primary surgery | LR | Interval (months) | Salvage therapy | TNM | Margins | Distant recurrences | Interval (months) | Follow up (months) | Survival status |
|-----------------|-----|-------------------|-----------------|-------|---------|---------------------|-------------------|--------------------|-----------------|
| TEM | Yes | 5 | LAR | pT3N0 | R0 | - | - | 16 | A |
| TEM | Yes | 5 | APR | pT2N0 | R0 | - | - | 34 | DNCR |
| TEM | Yes | 6 | APR | pT2N0 | R0 | - | - | 33 | DNCR |
| TEM | Yes | 7 | LAR | pT2N0 | R0 | - | - | 69 | A |
| TEM | Yes | 10 | APR | pT3N0 | R0 | - | - | 69 | A |
| TEM | Yes | 10 | LAR | pT3N0 | R0 | - | - | 16 | A |
| TEM | Yes | 11 | LAR | pT3N1 | R0 | - | - | 19 | A |
| TEM | Yes | 12 | LAR | pT3N0 | R0 | - | - | 20 | A |
| TEM | Yes | 40 | CTh,APR | pT0N0 | R0 | - | - | 49 | A |
| TEM | Yes | 5 | LAR | pT3N0 | R0 | Liver, lung | 5 | 13 | DCR |
| TEM | Yes | 12 | LAR, CTh | pT3N2 | R1 | Liver | 27 | 39 | DCR |
| TEM | Yes | 19 | Hp | pT2N0 | R0 | Liver | 19 | 40 | DCR |
| TEM | Yes | 5 | None | cT3 | - | Liver | 5 | 15 | DCR |
| TEM | Yes | 20 | CTh | cT4 | - | Liver | 22 | 30 | DCR |
| TEM | Yes | 50 | CTh | cT4 | - | Lung | 50 | 52 | A |
| TME | No | - | - | - | - | Skin | 5 | 7 | DCR |
| TME | No | - | - | - | - | Peritonitis carcin | 0 | 20 | DCR |
| TME | No | - | - | - | - | Liver, bone | 28 | 29 | DCR |
| TME | No | - | - | - | - | Liver, lung, brain | 29 | 34 | DCR |
| TME | No | - | - | - | - | Liver | 23 | 39 | DCR |
| TME | No | - | - | - | - | Lung | 16 | 57 | DCR |

Table 3. Characteristics of local and distant recurrences after TEM or TME for T1 rectal cancer.

APR = abdomino-perineal resection; AR = anterior resection; Cth = chemotherapy; Hp = Hartmann's procedure; - = not applicable; p = pathological; c = clinical; R0 = microscopically radical; R1 = microscopically irradical; A = Alive; DCR = died cancer-related; DNCR = died not cancer-related.

Figure 1. Local recurrence rates of patients after TEM and TME of T1 rectal cancer.

Figure 2. Overall survival of patients after TEM and TME of T1 rectal cancer.

Figure 3. Cancer specific survival of patients after TEM and TME of T1 rectal cancer.

ACCEPTED MANUSCRIPT

Figure 1.

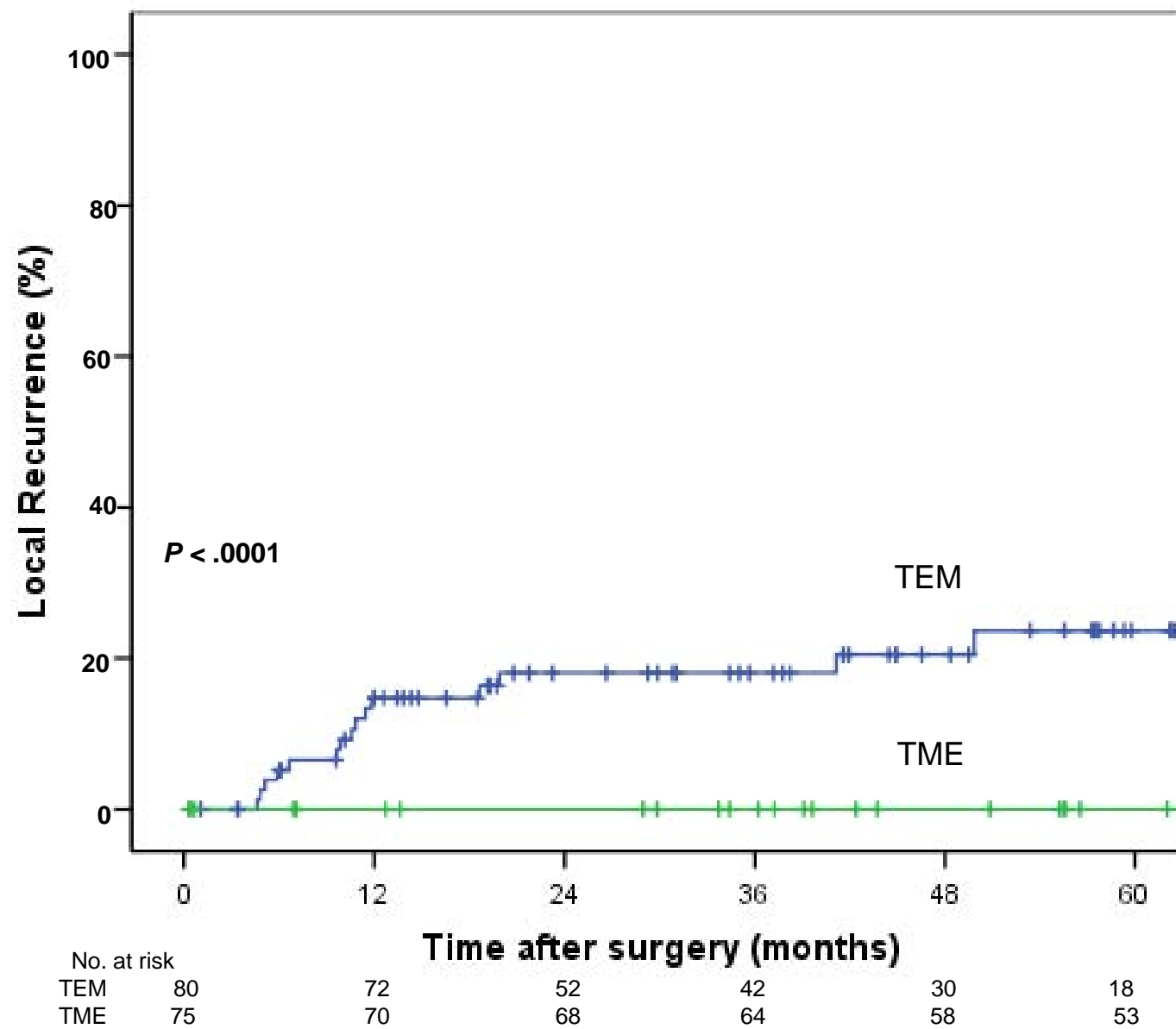


Figure 2.

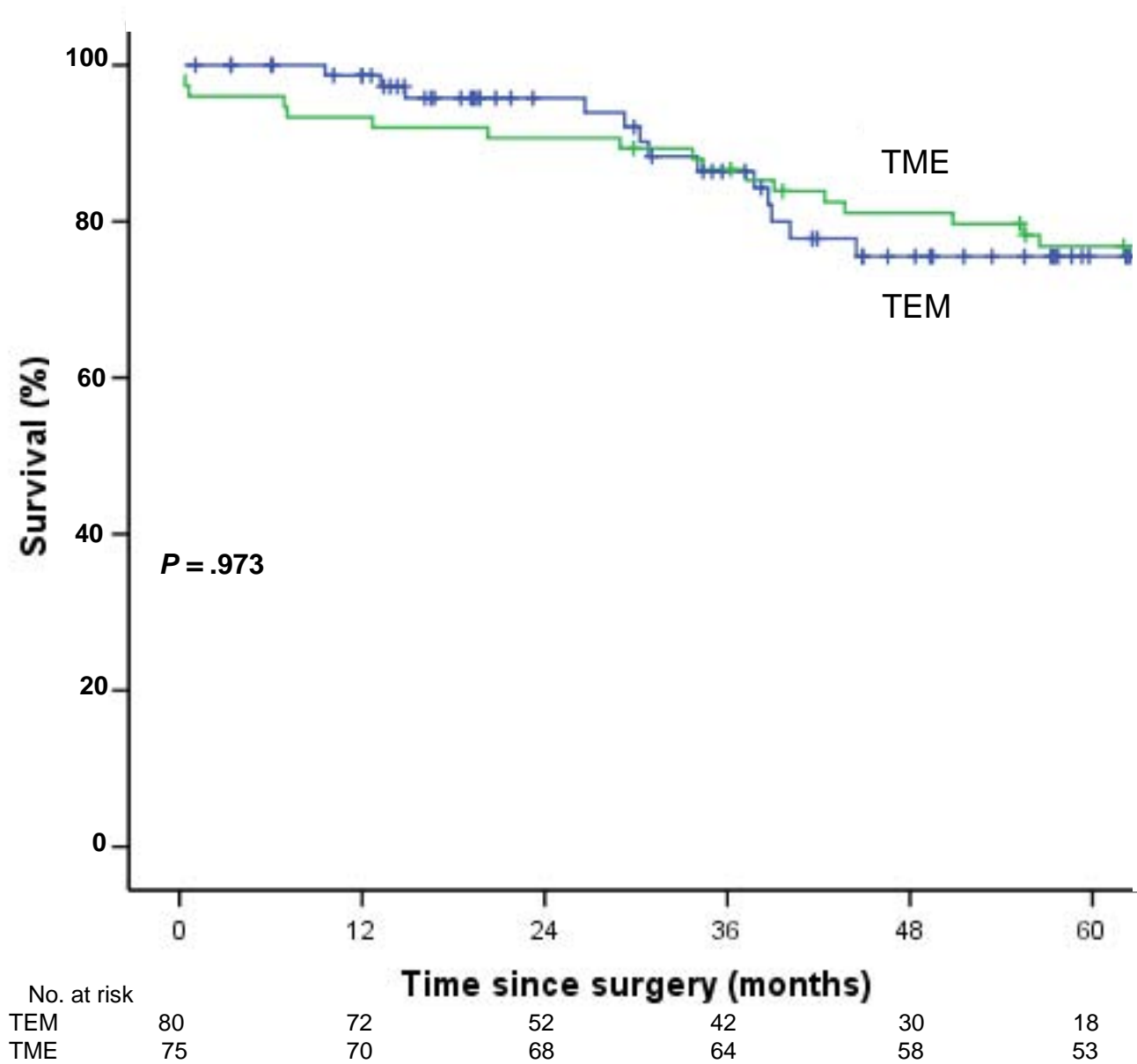


Figure 3.

