



Large-scale calcium channel gene rearrangements in Episodic Ataxia and Hemiplegic Migraine: Implications for diagnostic testing

R W Labrum, S Rajakulendran, T D Graves, L H Eunson, R Bevan, M G Sweeney, S R Hammans, N Tubridy, T Britton, L J Carr, et al.

► To cite this version:

R W Labrum, S Rajakulendran, T D Graves, L H Eunson, R Bevan, et al.. Large-scale calcium channel gene rearrangements in Episodic Ataxia and Hemiplegic Migraine: Implications for diagnostic testing. Journal of Medical Genetics, 2009, 46 (11), pp.786. 10.1136/jmg.2009.067967 . hal-00552702

HAL Id: hal-00552702

<https://hal.science/hal-00552702>

Submitted on 6 Jan 2011

HAL is a multi-disciplinary open access archive for the deposit and dissemination of scientific research documents, whether they are published or not. The documents may come from teaching and research institutions in France or abroad, or from public or private research centers.

L'archive ouverte pluridisciplinaire **HAL**, est destinée au dépôt et à la diffusion de documents scientifiques de niveau recherche, publiés ou non, émanant des établissements d'enseignement et de recherche français ou étrangers, des laboratoires publics ou privés.

Large-scale calcium channel gene rearrangements in Episodic Ataxia and Hemiplegic Migraine: Implications for diagnostic testing

RW Labrum PhD^{1*}, S Rajakulendran MRCP^{1*}, TD Graves MRCP¹, LH Eunson PhD², R Bevan¹, MG Sweeney PhD¹, SR Hammans FRCP³, N Tubridy FRCP⁴, T Britton FRCP⁵, LJ Carr MD⁶, JR Ostergaard DMedSc⁷, CR Kennedy FRCP⁸, A Al-Memmar FRCP⁹, DM Kullmann FMedSci¹, S Schorge PhD¹, K Temple FRCP¹⁰, MB Davis PhD¹ and MG Hanna FRCP¹

¹MRC Centre for Neuromuscular Diseases, and Neurogenetics Unit, UCL Institute of Neurology and National Hospital for Neurology and Neurosurgery, Queen Square, London WC1N 3BG, UK

²Department of Biological Sciences, University of Essex, UK

³Wessex Neurological Centre, Southampton General Hospital, Southampton, UK

⁴Department of Neurology, St Vincent's University Hospital, Dublin, Ireland

⁵Dept of Neurology, Kings College Hospital, London, UK

⁶Great Ormond Street Hospital, UCL Institute of Child Health, UK

⁷Department of Pediatrics A, University Hospital Aarhus, Skejby, Denmark

⁸Clinical Neurosciences, University of Southampton, UK

⁹Department of Neurology, St. Georges Hospital, London, UK

¹⁰Academic Unit of Genetic Medicine, Princess Anne Hospital, Southampton, UK

* These authors contributed equally to this work.

Supplemental Appendix, electronic file name: appendix e-1

Correspondence to Prof M G Hanna, MRC Centre for Neuromuscular Diseases, Institute of Neurology, UCL, London, WC1N 3BG. Fax: +44 (02)207 692 1208 mhanna@ion.ucl.ac.uk

Disclosure: The authors report no conflicts of interest

Word count abstract: 200

Word count body: 3107

Figures: 3

References: 27

Tables: 1

Key words: CACNA1A, Episodic ataxia, Hemiplegic migraine, channelopathies, deletions

Abstract

Background: Episodic ataxia type 2 (EA2) and familial hemiplegic migraine type 1 (FHM1) are autosomal dominant disorders characterized by paroxysmal ataxia and migraine respectively. Point mutations in *CACNA1A*, which encodes the neuronal P/Q-type calcium channel, have been detected in many cases of EA2 and FHM1. The genetic basis of typical cases without *CACNA1A* point mutations is not fully known. Standard DNA sequencing methods may miss large scale genetic rearrangements such as deletions and duplications. We investigated whether large-scale genetic rearrangements in *CACNA1A* can cause EA2 and FHM1. **Methods:** We used multiplex ligation-dependent probe amplification (MLPA) to screen for intragenic *CACNA1A* rearrangements. **Results:** We identified five previously unreported large scale deletions in *CACNA1A* in seven families with episodic ataxia and in one case with hemiplegic migraine. One of the deletions (exon 6 of *CACNA1A*) segregated with episodic ataxia in a four-generation family with eight affected individuals previously mapped to 19p13. In addition, we identified the first pathogenic duplication in *CACNA1A* in an index case with isolated episodic diplopia without ataxia and in a first degree relative with episodic ataxia. **Conclusions:** Large-scale deletions and duplications can cause *CACNA1A* associated channelopathies. Direct DNA sequencing alone is not sufficient as a diagnostic screening test.

Introduction

Episodic ataxia type 2 (EA2) and familial hemiplegic migraine type 1 (FHM1) are dominant disorders caused by mutations in *CACNA1A* on chromosome 19p13.[1, 2] This gene encodes the alpha subunit of the P/Q-type calcium channel [3], the principal channel involved in neurotransmission at central nerve terminals.[4] Episodic ataxia type 2 (EA2) is characterized by paroxysmal attacks of cerebellar dysfunction resulting in incoordination, slurred speech and ataxic gait.[5-7] Epilepsy has also been reported as part of the phenotype in some cases [8, 9]. Familial hemiplegic migraine type 1 (FHM1) is a variant of migraine with aura resulting in attacks of unilateral hemiplegia and/or hemisensory loss.[10] Nonsense and missense mutations, which result in a premature stop codon or aberrant splicing, account for many cases of EA2 [11-13] while missense mutations altering conserved amino acid residues tend to associate with FHM1 [14] but also cause EA2.[15]

A significant proportion of EA patients with clinical features typical of EA2 do not have point mutations in *CACNA1A*. Mutations in two additional genes (*CACNB4* and *SLC1A3*) have been reported in a small number of patients with EA2-type features. A mutation in *CACNB4*, encoding the beta subunit of the P/Q-type calcium channel has been described in one family with an EA2 type phenotype (termed EA5) and also in another family with juvenile myoclonic epilepsy.[16] *SLC1A3*, encoding the excitatory amino acid transporter EAAT1 has been associated with EA2-like features in three families (termed EA6).[17, 18] Two additional genes have been associated with FHM: *ATP1A2* [19-21] and *SCN1A* [22] cause FHM types 2 and 3 respectively. However, many patients with typical clinical features of EA2 and FHM1 do not have point mutations in these genes. These observations suggest that either other genes are responsible or that they are

due to unidentified genetic defects in *CACNA1A*. Such defects may not be detected by standard mutation screening strategies, such as those in introns, alternatively spliced exons and regulatory regions.

In the present study, we used multiplex ligation dependent probe amplification (MLPA) to screen for large scale genetic rearrangements in the *CACNA1A* gene in a series of patients who had clinical EA or hemiplegic migraine. Our aim was to investigate if large deletions and duplications in the gene can cause these disorders.

Methods

Patients: Ethical approval was obtained from the UCLH ethics committee. A total of 53 cases, including the cohort described in [24] were included in the current study. Samples from patients with a clinical diagnosis of EA2 or FHM were referred from England, Republic of Ireland and Denmark. These patients had been previously sequenced for mutations in the coding regions of *CACNA1A* and no disease-causing mutations were identified. Critical evaluation of patient data was carried out in accordance with published criteria. [5, 23]

MLPA Analysis: The MLPA *CACNA1A* test kit (SALSA P279_A1) is manufactured by MRC-Holland, Amsterdam. The kit contains probes for exons 1, 4, 6-8, 10, 11, 13, 16, 18, 20, 24, 25, 27, 29, 31, 33, 35, 38, 39, 40, 43, 46 and 47 of *CACNA1A*. MLPA was performed according to manufacturers' instructions and the amplified fragments were analysed using an ABI 3730xl capillary sequencer (Applied Biosystems) and the GeneMarker v1.70 software (SoftGenetics). Individual peaks corresponding to each exon (*CACNA1A* as well as control genes) were

identified based on the difference in migration relative to the size standards (LIZ 500, Applied Biosystems). The GeneMarker analysis software uses the MLPA ratio method to determine the deviation of each allele peak, relative to the average deviation of all peaks. This method standardises the data so that the median point within the data set is considered to be 1 and calculates the deviation of each peak from this median as a ratio. A peak with a ratio of less than 0.75 indicates a deletion while a peak with a ratio of greater than 1.25 indicates duplication.

DNA Sequencing: Automated direct DNA sequencing was performed on PCR products using primers that amplified each exon of *CACNA1A* which were found to be deleted or duplicated using MLPA analysis. Samples were sequenced using the ABI Big Dye Terminator Sequencing Kit version 1.1 and M13 universal primers on an ABI 3730xl capillary sequencer.

Results

Patients from eight unrelated families were found to have rearrangements in *CACNA1A*. Six had a clinical diagnosis of attacks with features typical of EA2, one had sporadic hemiplegic migraine and one patient had episodic diplopia. In three patients the data indicated that at least a single exon deletion was present (Table 1, Figure 1 and Figure 2). In all cases the presence of SNP's under the probe binding site was excluded by direct DNA sequencing. None of the deletions or the single duplication were detected in a panel of 180 normal control chromosomes. The frequency of rearrangement mutations in our patient cohort is significantly different when compared to a control population ($p < 0.001$; Fisher's exact test) supporting the view that our results are not false positives occurring by chance only in the patient disease group and not in the control group. The mutations have not been reported before in the literature.

Family 1

Episodes of ataxia began in the proband at the age of 39 years with stereotyped attacks of unsteadiness and dysarthria lasting a few hours. There were no precipitants for attacks but sleep helped their resolution. The attacks were completely abolished by acetazolamide. Interictal examination revealed square wave jerks, gaze-evoked nystagmus and jerky pursuits, but no limb ataxia. Family history indicated dominant inheritance with the proband's daughter and father also affected (Figure 3A). The daughter reported stress-induced attacks of unsteadiness, dysarthria and nausea which lasted several hours. She responded well to acetazolamide. Examination revealed gaze-evoked nystagmus. The proband's father is deceased but had a history consistent with EA2.

MLPA identified a heterozygous deletion of exon 4 of *CACNA1A* in the proband and in his daughter (Figure 1B). Probes for exons 1 and 6 gave normal results, indicating that the maximum length of the deletion is 146131 base pairs (see Figure 2).

Family 2

The proband was from a family with eight affected individuals, spanning four generations exhibiting a classical phenotype of EA2 (Figure 3B). She developed attacks from the age of four years. These consisted of diplopia, slurred speech, unsteadiness and headaches. Excitement, stress and tiredness triggered episodes. Examination at the age of 59 years revealed cerebellar signs including gaze-evoked nystagmus, cerebellar dysarthria, finger nose ataxia and a marked broad based gait. Since the age of 30 there has been persistent gait ataxia and dysarthria.

Although the age of onset and disease severity varied amongst the other affected family members, all experienced similar symptoms to that of the proband. All affected members showed a good response to acetazolamide.

Linkage analysis identified a common haplotype at 19p13 that segregated with disease status in the family (Supplemental appendix). However, DNA sequencing of the entire coding and flanking regions of *CACNA1A* in the proband did not identify a point mutation. In contrast, MLPA identified a heterozygous deletion of exon 6 of *CACNA1A* in the proband (Figure 1C). There was no probe for exon 5, but exons 4 and 7 were present. Based on this data, the maximum size of the deletion is predicted to be 35778 base pairs (See Figure 2). The deletion was confirmed to segregate with the EA2 phenotype and was found in all affected family members and was absent in one unaffected family member.

Family 3

The index case described lifelong “spasms” of his eyes by which he meant attacks of double vision and oscillopsia which occurred up to twice a day and lasted one to two hours. These attacks were often triggered by sudden head movements. He denied other motor or sensory symptoms. There was no history of ataxia but he did report dizziness which occasionally accompanied his attacks of double vision. On examination he had gaze-evoked nystagmus. There were no cerebellar signs in his limbs and no gait ataxia. MRI of his brain was normal and he did not respond to acetazolamide. His father had excitement-induced attacks of ataxia and slurred speech which would last one hour, during which he reportedly had oscillopsia and nystagmus.

MLPA identified a heterozygous duplication of exon 6 of the *CACNA1A* gene in the proband (Figure 1D). The maximum length of the duplication is predicted to be 35778 base pairs (See Figure 2).

Family 4

The index case experienced stereotyped attacks of EA2 from the age of 5 years. Episodes consisted of vertigo, slurred speech and incoordination in her arms and legs. A throbbing headache and vomiting accompanied half her attacks which lasted from a few hours to three days. Sleep often either aborted or lessened the severity. Interictally, she described occasional oscillopsia. There was no family history of episodic ataxia or migraine. When examined at 18 years, she had square wave jerks in the primary position with gaze-evoked nystagmus and jerky pursuit movements. There was mild gait ataxia. An EEG demonstrated a mild excess of irregular slow wave bursts with spike wave transients suggestive of epileptiform paroxysms. However, an EEG taken at the time of an attack remained in its normal wake state, although the bursts were a little more frequent. There was no history to suggest seizures. Unusually, there was no beneficial response to acetazolamide.

A heterozygous deletion of exon 27 of *CACNA1A* was detected by MLPA (Figure 1E). Probes for exons 25 and 29 gave normal results, indicating that the maximum length of the deletion is 7474 base pairs (See Figure 2).

Family 5

From the age of 18 months, the index case experienced attacks of unsteadiness and vomiting which lasted up to 6 hours and occurred twice a month. There was no relevant family history. Interictal examination revealed jerky pursuit movements, gaze-evoked nystagmus and a mild broad-based gait. There was a good response to acetazolamide.

MLPA identified heterozygous deletions of exons 20 to 38 of *CACNA1A* (Figure 1F). As exons 18 and 39 were present in the proband, the maximum length of the deletion is predicted to be 86155 base pairs. This large deletion is predicted to result in degradation of the truncated mRNA transcript.

Family 6

Episodes of “clumsiness” began at the age of 10 in the index case. There was sudden onset of dizziness and the inability to sit or stand and associated nausea. Examination showed reduced balance on tandem walking and mild dysdiadochokinesis. At the age of 11, she experienced typical absence seizures with ictal EEG recordings consistently showing 3Hz generalized spike and wave discharges. A few months later, she experienced attacks of vertigo, nausea and vomiting. Initially they occurred weekly and would last up to four hours. Sleep would help attack resolution. Examination during one such episode revealed ataxia, problems with sitting balance and gaze-evoked nystagmus. Initial treatment with acetazolamide resulted in a marked improvement although attacks were not completely abolished. Over the years, the attack frequency varied from twice monthly to periods of six months when she was attack free. The duration of the attacks diminished with age. An MRI of the brain at 12 years was normal,

although subsequent scans at the age of 16 and 18 years demonstrated slight atrophy of the cerebellum, and in particular the vermis. There was no family history of EA2.

Family 7

When assessed at age 37 years the index case gave a 20 year history of frequent episodic neurological symptoms affecting her right side. Attacks comprised of loss of vision in her right hemifield, weakness and numbness of the right side of her face, right arm and leg. These attacks generally lasted between 15 and 30 minutes. The episodes varied in frequency from twice monthly to 3 or 4 times per year. They were usually not accompanied by headaches, nausea, vomiting or photophobia. She also described typical migraine with nausea and vomiting which occurred separately from the hemiplegic attacks, but these were infrequent. Neurological examination was entirely normal as was an MRI of the brain. The attacks were considered to be consistent with hemiplegic migraine. Her mother suffered from migraine, but did not have attacks of weakness or abnormal sensation. Her paternal grandfather was described to have had several strokes in his 40's but further details were not available.

Family 8

In the index case, attacks of unsteadiness, dizziness and nausea occurred from the age of 2.5 years. These were precipitated by exertion and relieved by sleep and would occur on average once a week. She has recently begun to complain of headaches. There was no family history of episodic ataxia but her mother and sister complained of migraine without aura or weakness. Interictal examination at the age of eight years revealed mild dysdiadochokinesis with poor

balance but no other cerebellar signs. EEG and brain MRI were both normal. Acetazolamide has not been prescribed to date.

In the index cases of families 6, 7 and 8, MLPA probe analysis was consistent with a heterozygous deletion of exons 39-47 of *CACNA1A* (Figure 1G). Exon 38 was present in all three cases and although the 3' limit of the deletion is yet to be characterised, two of the patients (7 and 8) were heterozygous for a CAG repeat present at the end of exon 47, downstream of the location of the MLPA probe (data not shown). Therefore the maximum length of the deletion in these patients is predicted to be 18225 base pairs (See Figure 2). We suspect the breakpoint of the deletions will be the same in all 3 patients and therefore assume the size of the deletion to be the same in the third patient, who was homozygous for the CAG repeat but until the breakpoints of the deletion are mapped, this cannot be confirmed. However, in all 3 cases, the absence of multiple exons is likely to result in degradation of the mRNA transcript.

| Family index case | Dx | Age onset (yrs) | Episodic features | Episode duration | Interictal Examination | FH | Additional features | MRI Brain | Response to ACZ | Exon del/dup | Maximum length of del/dup (bp) |
|-------------------|-----|-----------------|---|------------------|------------------------------|---------------------------|--------------------------------|--------------------|------------------|------------------|--------------------------------|
| 1 | EA2 | 39 | Ataxia dysarthria | Few hours | SWJ, GEN JP | Daughter/ father affected | headaches | - | Good | del: exon 4 | 146131 |
| 2 | EA2 | 4 | Diplopia dysarthria ataxia headache | 24 hours | GEN; dysarthria; ataxic gait | 8 affected | Persistent cerebellar syndrome | - | Good | del: exon 6 | 35778 |
| 3 | ED | Lifelong | Diplopia oscillopsia | Few hours | GEN | Father had EA | - | Normal | None | dup: exon 6 | 35778 |
| 4 | EA2 | 5 | Vertigo dysarthria ataxia | Hours to days | SWJ, GEN JP | No | Epileptiform EEG | - | None | del: exon 27 | 7474 |
| 5 | EA2 | 1.5 | Ataxia vomiting | Few hours | GEN, JP Ataxic gait | No | - | - | Good | del: exons 20-38 | 86155 |
| 6 | EA2 | 10 | Ataxia vertigo vomiting | Several hours | GEN DDK | No | Absence seizures | Cerebellar atrophy | Initial response | del: exons 39-47 | Unknown; predicted to be 18225 |
| 7 | SHM | 17 | LOV in right hemifield right sided hemiplegia | 30 mins | Normal | No | - | Normal | ACZ declined | del: exons 39-47 | 18225 |
| 8 | EA2 | 2.5 | Ataxia vertigo nausea | Few hours | DDK | No | - | Normal | ACZ declined | del: Exons 39-47 | 18225 |

Table 1: Summary of clinical and genetic findings in families with CACNA1A rearrangements detected by MLPA; **Dx**= Diagnosis; **EA**= Episodic ataxia; **SHM**= Sporadic hemiplegic migraine; **ED**= Episodic diplopia; **LOV**= loss of vision; **SWJ**= square wave jerks; **GEN**= gaze evoked nystagmus; **JP**= jerky pursuit; **DDK**= dysdiadochokinesis; **FH**= family history; **del**= deletion; **dup**= duplication; **bp**= base pairs

Discussion

An increasing number of point mutations in *CACNA1A* have been reported to cause EA2 and FHM1. [1, 6, 10, 11, and 14] However, a significant number of patients with typical phenotypes do not harbour point mutations in *CACNA1A*. Sequencing of additional candidate genes, *SCL1A3* and *CACNB4*, failed to identify mutations in part of our cohort.[24] A deletion mutation mechanism has been described in other ion channel genes such as in *SCN1A*, which causes severe myoclonic epilepsy of infancy (SMEI).[25] Recently, a large deletion in *CACNA1A* was reported in the two affected members of a family with EA2. [26]

In the present study we identified *CACNA1A* rearrangements in eight families. These rearrangements are likely to be pathogenic. Their location within the channel suggests they would remove or duplicate highly conserved regions of the channel protein. It is possible that the deletions in the index case of family 5 which spans at least exons 20 to 38 and in families 6, 7 and 8, which removes all exons downstream of exon 38, would result in premature truncation of the channel protein. Alternatively these multi-exon deletions may result in mRNA transcripts that undergo nonsense-mediated decay but this needs further evaluation. In the index cases of families 1, 2, 3 and 4, in whom rearrangements of at least one exon have been identified, the fate of the mRNA transcript will depend on whether the mutations affect the reading frame. If in-frame, such large rearrangements are likely to interfere with correct protein assembly, folding and trafficking. In family 1, the deletion spanned exon 4 which encodes the S4 voltage sensor segment of domain I, removal of which is likely to have deleterious effects on kinetic parameters such as the voltage-dependence of activation. The segregation of the deletion in family 2 in eight affected individuals and its absence in an unaffected member also supports pathogenicity.

Segregation was also seen in family 1. The rearrangements were not identified in a group of 180 normal as well as 260 disease control chromosomes. We estimated that it is very unlikely our observations are false positives as we did not see any rearrangements in the control group ($p < 0.001$ Fisher exact test).

The phenotypic spectrum observed in this study included EA2, hemiplegic migraine and episodic diplopia. The finding of a large scale deletion in the index case of family 7 who presented with hemiplegic migraine is of interest as to date only small deletions have been described in this disorder [27]. Although FHM is generally considered to be caused by gain of function mutations, some groups have argued that FHM may arise from loss of function mutations [28, 29]. Our findings suggest that a deletion mutation mechanism, which is more likely to result in a loss of function, may underlie the phenotype in family 7. Parental samples from the index case of family 7 case were not available for testing. Our findings, together with our recent identification of a second hemiplegic migraine patient with the same deletion (see Addendum) suggests that patients with hemiplegic migraine should be screened for deletions.

In family 3 we identified the first reported exonic duplication in *CACNA1A*. The index case presented with an episodic eye movement disorder without ataxia or dysarthria. Eye movement abnormalities including diplopia and oscillopsia are documented in EA2 patients [30] but are not commonly reported in isolation. The index case's father was reported to have typical EA2, suggesting phenotypic variability amongst members of the same kindred.

Three patients were found to have deletions of exons 39-47. Their diverse ethnic backgrounds (Irish, Indian and Danish) would argue against a founder effect. This recurrent large deletion may reflect regional intragenic propensity to recombination. The only previously described large deletion was considered to have arisen through homologous recombination of *Alu* sequences.[26]

Patients 3 and 4 did not respond to acetazolamide (ACZ). In our experience nearly all patients with clinical episodic ataxia appear to respond very well to ACZ, but there is a subset of patients in whom ACZ has very little effect. This might be a result of the specific mutations but the reason remains unclear.

The identification of a deletion in *CACNA1A* in the large family with EA2 (Family 2) highlights the importance of screening for deletions in *CACNA1A* as part of the molecular characterization of EA2. Our linkage analysis had previously identified a common haplotype at 19p13 that segregated with disease status but sequencing had failed to identify any mutations in *CACNA1A*. Segregation of the deletion with the disease phenotype supports the view that this deletion is disease-causing.

Since MLPA probes for all exons are not yet available, a negative MLPA result in this study does not exclude deletions or duplications of the remaining exons. However, the positive finding of large scale rearrangements in *CACNA1A* in eight unrelated families provides new evidence that such mutations can be associated with episodic ataxia, episodic diplopia and with hemiplegic migraine. In our cohort of EA2 families, in whom we have now identified pathogenic mutations in *CACNA1A*, 12% have a large scale rearrangement.

This study has expanded the mutation spectrum in *CACNA1A* to include large scale rearrangements. Our observations have implications for DNA diagnosis. To date most groups have used direct DNA sequencing which may miss these rearrangements. We suggest that screening for large scale rearrangements by rapid techniques such as MLPA should be considered as a first line approach for genetic diagnostic testing of *CACNA1A* associated channelopathies. Our findings indicate that large scale gene rearrangements are an important cause of *CACNA1A*-associated neurological disease.

Key points

- The aim of this study was to screen a series of patients with a clinical phenotype of episodic ataxia or hemiplegic migraine for large scale rearrangements in the *CACNA1A* gene.
- Using MLPA we initially identified 4 single exonic deletions and 4 multi-exonic deletions in 8 families.
- 3 families had multiple deletions of exons 39-47 of *CACNA1A*. In addition, we have since identified two unrelated patients who also harbour deletions of exons 39-47 (see addendum) suggesting that this region of the gene may be a hot spot for recombination.
- Our findings suggest that screening for rearrangements in *CACNA1A* should complement direct sequencing of the gene in *CACNA1A*-associated channelopathies.

Addendum

Since the original submission of this manuscript we have identified a further two unrelated patients with deletions of exons 39 to 47. One patient has sporadic hemiplegic migraine and experiences hemisensory and hemimotor disturbance while the second patient has episodic ataxia and epilepsy. This brings the total number of unrelated individuals harbouring rearrangements to 10 identified in this study, 8 of which have multiple consecutively deleted exons.

Acknowledgements

MGH is supported by an MRC Centre grant (G0601943). SR holds a Clinical Training Fellowship from the Wellcome Trust. TDG was funded by an Action Medical Research Training Fellowship and the Guarantors of Brain. SR, TDG and MGH belong to the Consortium for Clinical Investigation of Neurological Channelopathies (CINCH) supported by NIH RU54 RR019482 (NINDS/ORD). The work of RWL, SR, MGS, MBD, LHE, TDG and MGH is undertaken at University College London Hospitals/University College London, which received a proportion of funding from the Department of Health's National Institute for Health Research Biomedical Research Centres funding scheme. We thank all clinicians who referred patients to our national channelopathy service.

The Corresponding Author has the right to grant on behalf of all authors and does grant on behalf of all authors, an exclusive license (or non exclusive for government employees) on a worldwide basis to the BMJ Publishing Group Ltd to permit this article (if accepted) to be published in Journal of Medical Genetics and any other BMJ PGL products and sublicenses such use and exploit all subsidiary rights, as set out in our license.

Competing interests: None

References

1. Ophoff RA, Terwindt GM, Vergouwe MN, van Eijk R, Oefner PJ, Hoffman SM, Lamerdin JE, Mohrenweiser HW, Bulman DE, Ferrari M, Haan J, Lindhout D, van Ommen GJ, Hofker MH, Ferrari MD, Frants RR. Familial hemiplegic migraine and episodic ataxia type-2 are caused by mutations in the Ca²⁺ channel gene CACNL1A4. *Cell* 1996; **87**(3):543-52.
2. Vahedi K, Joutel A, Van Bogaert P, Ducros A, Maciaseck J, Bach JF, Bousser MG, Tournier-Lasserre E. A gene for hereditary paroxysmal cerebellar ataxia maps to chromosome 19p. *Ann Neurol.* 1995; **37**(3):289-93.
3. Bourinet E, Soong TW, Sutton K, Slaymaker S, Mathews E, Monteil A, Zamponi GW, Nargeot J, Snutch TP. Splicing of alpha 1A subunit gene generates phenotypic variants of P- and Q-type calcium channels. *Nat Neurosci.* 1999; **2**(5):407-15.
4. Mori Y, Friedrich T, Kim M-S, Mikami A, Nakai J, Ruth P, Bosse E, Hofmann F, Flockerzi V, Furuichi T, Mikoshiba K, Imoto K, Tanabe T, Numa, S. Primary structure and functional expression from complementary DNA of a brain calcium channel. *Nature* 1991; **350**(6317):398-402.

5. Jen JC, Kim GW, Baloh RW. Clinical spectrum of episodic ataxia type 2. *Neurology* 2004; **62**(1):17-22.
6. Jen JC, Graves TD, Hess EJ, Hanna MG, Griggs RC, Baloh RW; CINCH investigators. Primary episodic ataxias: diagnosis, pathogenesis and treatment. *Brain* 2007; **130**(Pt 10):2484-93.
7. Baloh R, Yue Q, Furman JM, Nelson SF. Familial episodic ataxia: clinical heterogeneity in four families linked to chromosome 19p. *Ann Neurol.* 1997; **41**(1):8-16.
8. Jouvenceau A, Eunson LH, Spauschus A, Ramesh V, Zuberi SM, Kullmann DM, Hanna MG. Human epilepsy associated with dysfunction of the brain P/Q-type calcium channel. *Lancet* 2001; **358**(9284):801-7.
9. Imbrici P, Jaffe SL, Eunson LH, Davies NP, Herd C, Robertson R, Kullmann DM, Hanna MG. Dysfunction of the brain calcium channel CaV2.1 in absence epilepsy and episodic ataxia. *Brain* 2004; **127**(12): 2682-92.
10. Ducros A, Denier C, Joutel A, Cecillon M, Lescoat C, Vahedi K, Darcel F, Vicaud E, Bousser MG, Tournier-Lasserre E. The clinical spectrum of familial hemiplegic migraine associated with mutations in a neuronal calcium channel. *N Engl J Med.* 2001; **345**(1):17-24.
11. Jen JC, Baloh RW. Genetics of episodic ataxia. *Adv Neurol.* 2002; **89**:459-61.
12. Denier C, Ducros A, Vahedi K, Joutel A, Thierry P, Ritz A, Castelnovo G, Deonna T, Gérard P, Devoize JL, Gayou A, Perrouty B, Soisson T, Autret A, Warter JM, Vighetto A, Van Bogaert P, Alamowitch S, Rouillet E, Tournier-Lasserre E. High prevalence of CACNA1A truncations and broader clinical spectrum in episodic ataxia type 2. *Neurology* 1999; **52**(9):1816-21.

13. Eunson LH, Graves TD, and Hanna MG. New calcium channel mutations predict aberrant RNA splicing in episodic ataxia. *Neurology* 2005; **65**(2):308-10.
14. Pietrobon D. Familial hemiplegic migraine. *Neurotherapeutics* 2007; **4**(2): 274-84.
15. Mantuano E, Veneziano L, Spadaro M, Giunti P, Guida S, Leggio MG, Verriello L, Wood N, Jodice C, Frontali M. Clusters of non-truncating mutations of P/Q type Ca²⁺ channel subunit Ca(v)2.1 causing episodic ataxia 2. *J Med Genet.* 2004;**41**(6): 82
16. Escayg A, De Waard M, Lee DD, Bichet D, Wolf P, Mayer T, Johnston J, Baloh R, Sander T, Meisler MH. Coding and noncoding variation of the human calcium-channel beta4- subunit gene CACNB4 in patients with idiopathic generalized epilepsy and episodic ataxia. *Am J Hum Genet.* 2000;**66**(5):1531-9.
17. Jen JC, Wan J, Palos TP, Howard BD, Baloh RW. Mutation in the glutamate transporter EAAT1 causes episodic ataxia, hemiplegia, and seizures. *Neurology* 2005; **65**(4): 29-34.
18. de Vries B, Mamsa H, Stam AH, Wan J, Bakker SL, Vanmolkot KR, Haan J, Terwindt GM, Boon EM, Howard BD, Frants RR, Baloh RW, Ferrari MD, Jen JC, van den Maagdenberg AM. Episodic ataxia associated with EAAT1 mutation C186S affecting glutamate reuptake. *Arch Neurol.* 2009;**66**(1):97-101.
19. Ducros A, Joutel A, Vahedi K, Cecillon M, Ferreira A, Bernard E, Verier A, Echenne B, Lopez de Munain A, Bousser MG, Tournier-Lasserre E. Mapping of a second locus for familial hemiplegic migraine to 1q21-q23 and evidence of further heterogeneity. *Ann Neurol.* 1997;**42**(6): 885-90.
20. De Fusco M, Marconi R, Silvestri L, Atorino L, Rampoldi L, Morgante L, Ballabio A, Aridon P, Casari G. Haploinsufficiency of ATP1A2 encoding the Na⁺/K⁺ pump alpha2

- subunit associated with familial hemiplegic migraine type 2. *Nat Genet.* 2003; **33**(2):192-6.
21. Riant F, De Fusco M, Aridon P, Ducros A, Ploton C, Marchelli F, Maciazek J, Bousser MG, Casari G, Tournier-Lasserre E. ATP1A2 mutations in 11 families with familial hemiplegic migraine. *Hum Mutat.* 2005; **26**(3):281.
 22. Dichgans M, Freilinger T, Eckstein G, Babini E, Lorenz-Depiereux B, Biskup S, Ferrari MD, Herzog J, van den Maagdenberg AM, Pusch M, Strom TM. Mutation in the neuronal voltage-gated sodium channel SCN1A in familial hemiplegic migraine. *Lancet* 2005; **366**(9483):371-7.
 23. Headache Classification Subcommittee of the International Headache Society. The International Classification of Headache Disorders, 2nd edn. *Cephalalgia* 2004; **24** Suppl 1:1–160.
 24. Graves, TD and Hanna MG. Episodic ataxia: SLC1A3 and CACNB4 do not explain the apparent genetic heterogeneity. *J Neurol*, 2008; **255**(7):1097-9
 25. Mulley JC, Nelson P, Guerrero S, Dibbens L, Iona X, McMahon JM, Harkin L, Schouten J, Yu S, Berkovic SF, Scheffer IE. A new molecular mechanism for severe myoclonic epilepsy of infancy: exonic deletions in SCN1A. *Neurology* 2006; **67**(6):1094-5.
 26. Riant F, Mourtada R, Saugier-Veber P, Tournier-Lasserre E. Large CACNA1A deletion in a family with episodic ataxia type 2. *Arch Neurol* 2008; **65**(6):817-20.
 27. Veneziano L, Guida S, Mantuano E, Bernard P, Tarantino P, Boccone L, Hisama FM, Carrera P, Jodice C, Frontali M. Newly characterised 5' and 3' regions of CACNA1A gene harbour mutations associated with Familial Hemiplegic Migraine and Episodic Ataxia. *J Neurol Sci.* 2009; **276**(1-2): 31-7.

28. Cao YQ, Piedras-Renteria ES, Smith GB, Chen G, Harata NC and Tsien RW. Presynaptic Ca²⁺ channels compete for channel type-preferring slots in altered neurotransmission arising from Ca²⁺ channelopathy, *Neuron* 2004; **43**: 387–400.

29. Cao YQ and Tsien RW, Effects of familial hemiplegic migraine type 1 mutations on neuronal P/Q-type Ca²⁺ channel activity and inhibitory synaptic transmission, *Proc Natl Acad Sci U S A* 2005;**102**:2590–2595.

30. Yabe I, Kitagawa M, Suzuki Y, Fujiwara K, Wada T, Tsubuku T, Takeichi N, Sakushima K, Soma H, Tsuji S, Niino M, Saitoh S, Sasaki H. Downbeat positioning nystagmus is a common clinical feature despite variable phenotypes in an FHM1 family. *J Neurol.* 2008; **255**:1541–1544

Figure Legends

Figure 1: MLPA traces showing deletions and duplications of *CACNA1A* exons. The red peak is a control peak of known copy number to which the patient DNA (blue peak) is compared and a ratio calculated. A peak with a ratio of less than 0.75 indicates a deletion while a peak with a ratio of greater than 1.25 indicates duplication. Numbers correspond to exons in *CACNA1A*. **A:** Normal control **B:** deletion of exon 4 (family 1; ratio: 0.43); **C:** deletion of exon 6 (family 2;

ratio: 0.55); **D**: duplication of exon 6 (family 3; ratio: 1.39; **E**: deletion of exon 27 (family 4; ratio: 0.550; **F**: deletions of exons 20 (0.54), 24 (0.55), 25 (0.53), 27 (0.53), 29 (0.52), 31 0.48), 33 (0.53), 35 (0.48) and 38 (0.52) seen in family 5; **G**: deletions of exons 39 (0.52), 40 (0.54), 43 (0.52), 46 (0.31) and 47 (0.50) seen in family 6 (a similar trace was detected in families 7 and 8).

Figure 2: Maximum extent of the deletions and duplication detected using MLPA. Red squares indicate exons for which a probe is included in the MLPA analysis. Letters represent index cases of families as they appear in the main text.

Figure 3: Families 1 (**A**) and 2 (**B**). Filled symbols represent affected individuals.

Arrows represent the proband.

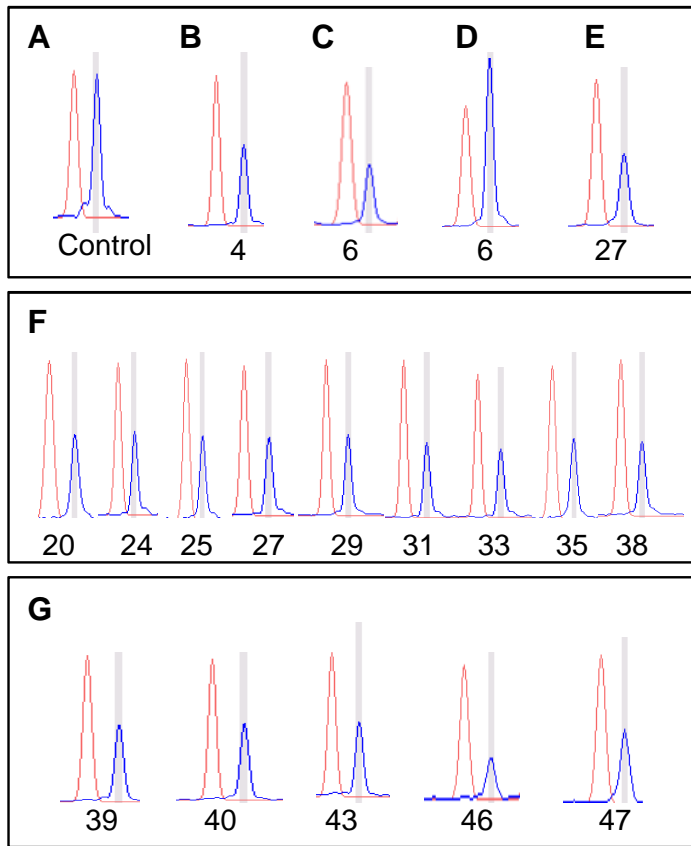


Figure 1. MLPA traces showing deletions and duplications of *CACNA1A* exons. The red peak is a control peak of known copy number to which the patient DNA (blue peak) is compared and a ratio calculated. Numbers below peaks represent exons of *CACNA1A*. A peak with a ratio of less than 0.75 indicates a deletion while a peak with a ratio of greater than 1.25 indicates duplication. Numbers correspond to exons in *CACNA1A*. **A:** Normal control; **B:** deletion of exon 4 in family 1 (ratio: 0.43); **C:** deletion of exon 6 in family 2 (ratio: 0.55); **D:** duplication of exon 6 in family 3 (ratio: 1.39); **E:** deletion of exon 27 in family 4 (ratio: 0.550); **F:** deletions of exons 20 (0.54), 24 (0.55), 25 (0.53), 27 (0.53), 29 (0.52), 31 (0.48), 33 (0.53), 35 (0.48) and 38 (0.52) in family 5; **G:** deletions of exons 39 (0.52), 40 (0.54), 43 (0.52), 46 (0.31) and 47 (0.50) seen in family 6 (a similar trace was detected in families 7 and 8).

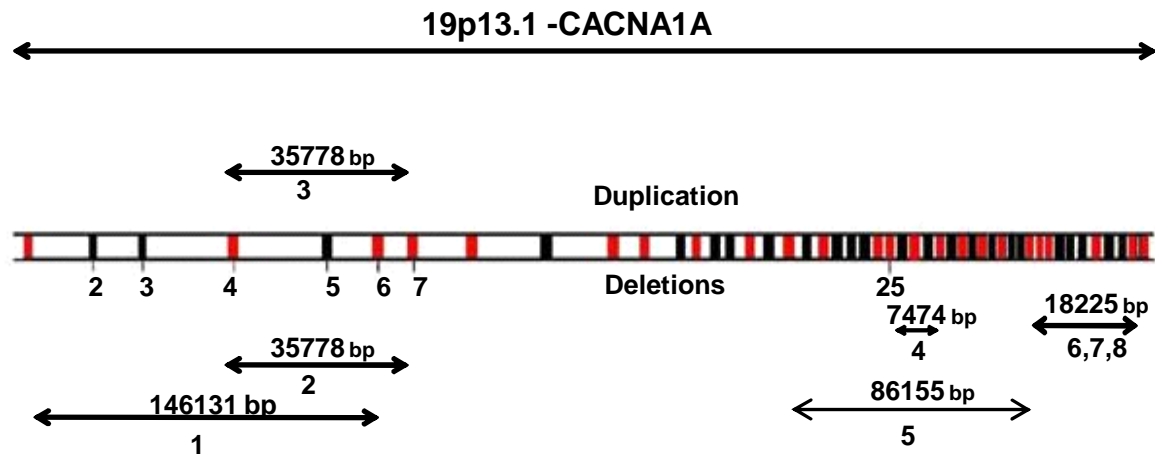
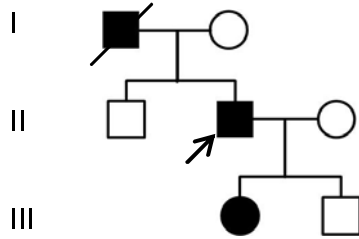


Figure 2: Maximum extent of the deletions and duplication detected using MLPA. Red squares indicate exons for which a probe is included in the MLPA analysis. Numbers represent families.

A



B

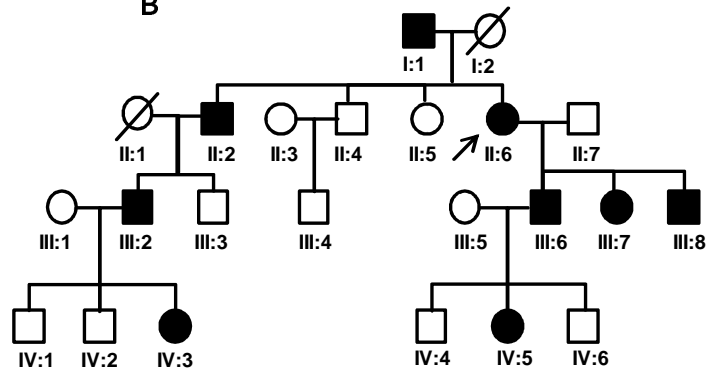


Figure 3: Families 1 (A) and 2 (B). Filled symbols represent affected individuals.

Arrows represent the proband.