



**HAL**  
open science

## Evaluation of NT-proBNP to predict outcomes in advanced heart failure

Guy Macgowan, Dermot Neely, Robert Peaston, Neil Wrightson, Gareth Parry

► **To cite this version:**

Guy Macgowan, Dermot Neely, Robert Peaston, Neil Wrightson, Gareth Parry. Evaluation of NT-proBNP to predict outcomes in advanced heart failure. *International Journal of Clinical Practice*, 2010, 64 (7), pp.892. 10.1111/j.1742-1241.2010.02388.x . hal-00552653

**HAL Id: hal-00552653**

**<https://hal.science/hal-00552653>**

Submitted on 6 Jan 2011

**HAL** is a multi-disciplinary open access archive for the deposit and dissemination of scientific research documents, whether they are published or not. The documents may come from teaching and research institutions in France or abroad, or from public or private research centers.

L'archive ouverte pluridisciplinaire **HAL**, est destinée au dépôt et à la diffusion de documents scientifiques de niveau recherche, publiés ou non, émanant des établissements d'enseignement et de recherche français ou étrangers, des laboratoires publics ou privés.

**Evaluation of NT-proBNP to predict outcomes in advanced heart failure**

Journal:	<i>International Journal of Clinical Practice</i>
Manuscript ID:	IJCP-12-09-0755.R1
Manuscript Type:	Original Paper
Date Submitted by the Author:	19-Jan-2010
Complete List of Authors:	MacGowan, Guy; Freeman Hospital, Cardiology Neely, Dermot; Freeman Hospital, Biochemistry Peaston, Robert; Freeman Hospital, Biochemistry Wrightson, Neil; Freeman Hospital, Cardiopulmonary Transplantation Parry, Gareth; Freeman Hospital, Cardiopulmonary Transplantation
Specialty area:	



## Evaluation of NT-proBNP to Predict Outcomes in Advanced Heart Failure

Guy A. MacGowan MD FACC<sup>1,2</sup>, D Neely MD FRCP FRCPath<sup>3</sup>, R Peaston PhD<sup>3</sup>,  
N Wrightson BSc<sup>2</sup>, G. Parry MB FRCP<sup>2</sup>

Departments of Cardiology<sup>1</sup>, Cardiothoracic Transplantation<sup>2</sup>, and  
Clinical Biochemistry<sup>3</sup>,  
Freeman Hospital, Newcastle upon Tyne, NE7 7DN

Disclosures: There are no potential conflicts of interest to disclose.

Corresponding Author:

Guy A. MacGowan, MD FACC,  
Dept of Cardiology, Freeman Hospital,  
Newcastle upon Tyne, NE7 7DN  
United Kingdom  
Ph. (44) 191 213 7140  
FAX: (44) 191 223 1152  
Email: [guy.macgowan@nuth.nhs.uk](mailto:guy.macgowan@nuth.nhs.uk)

**Abstract:**

**Aims:** To determine which factors predict outcomes in a group of patients with advanced heart failure, and in particular if NT-proBNP provides additional clinical and prognostic information to other haemodynamic and biochemical data.

**Methods and Results:** 91 patients were studied who were being evaluated for heart transplantation, with 166 assessments. The patients had advanced heart failure as determined by median cardiac index of 2.0 L/min/m<sup>2</sup>, left ventricular end-diastolic diameter 7.0 mm, and levels of NT-proBNP of 2473 pg/mL. Median follow up time was 359 days. Clinicians were blinded to NT-proBNP levels. NT-proBNP significantly correlated with cardiac index ( $R=-0.44$ ,  $P<0.001$ ), right atrial pressure ( $R=0.40$ ,  $P<0.001$ ), pulmonary arterial wedge pressure ( $R=0.38$ ,  $P<0.001$ ) and albumin ( $R=-0.52$ ,  $P<0.001$ ), and total bilirubin with right atrial pressure ( $R=0.59$ ,  $P<0.001$ ). Cardiac index was the most important independent predictor of outcome ( $P=0.0001$ ), though bilirubin ( $P=0.001$ ), and NT-proBNP ( $P<0.05$ ) were also significant. In patients with a 50% increase in NT-proBNP 64% had adverse outcomes, whereas those in whom levels were stable 22% had adverse outcomes ( $P<0.05$ ).

**Conclusion:** Cardiac index is the primary independent predictor of outcome in advanced heart failure when haemodynamic deterioration is evident. In situations where invasive haemodynamics are not available, total bilirubin (reflecting hepatic congestion), and NT-proBNP (related to haemodynamics) also provide important prognostic information.

**What is already known about this topic?**

There are numerous parameters that have been used to predict outcomes in advanced heart failure, including peak  $VO_2$  and B type natriuretic peptide (BNP). Transplantation is increasingly being seen as benefiting only the sickest heart failure patients, so we wished to determine what predicts outcomes in such a cohort of patients and in particular if NT-proBNP provided additional prognostic information.

**What does this article add?**

The data presented shows that whereas NT-proBNP in single or serial measurements does provide important prognostic information in a group of patients where timely decisions are critical, other parameters such as cardiac index and total bilirubin are probably more important.

## Introduction:

Predicting outcome in advanced congestive heart failure is critically important when considering urgent listing for transplantation or implantation of a ventricular assist device. As transplantation probably only provides a clear mortality benefit in the sickest heart failure patients<sup>1</sup>, we need to know what predicts outcomes in these patients, as opposed to less sick heart failure patients. Numerous factors are thought to predict outcomes, particularly functional capacity as measured by peak  $VO_2$ <sup>2,3</sup>, and B type natriuretic peptide (BNP)<sup>4,5</sup>. Which factor is most important will depend on the population being studied. For instance, in more advanced heart failure, peak  $VO_2$  may not be as predictive compared to less sick patients<sup>6</sup>, at least in part because the sickest patients are unable to exercise. Other factors such as haemodynamics<sup>7</sup>, serum sodium<sup>8</sup> and circulating cytokines<sup>9</sup> have also been shown to be important.

BNP, or its N-terminal fragment, NT-proBNP has been shown in a wide range of clinical heart failure settings to be able to predict outcomes, including patients being assessed for heart transplantation<sup>10,11</sup>. In addition, both single and serial measurements of BNP provide important prognostic information<sup>12,13</sup>. BNP relates to left ventricular wall stress<sup>14</sup> and filling pressures in heart failure patients<sup>15</sup>, and it has been suggested that NT-proBNP provides more reliable prognostic information than haemodynamics<sup>16</sup>.

The purpose of this study was to determine which variables best predict outcomes in a group of patients with advanced heart failure being assessed for transplantation. We sought to determine the role of single and serial measurements of NT-proBNP in

1  
2  
3  
4  
5  
6  
7  
8  
9  
10  
11  
12  
13  
14  
15  
16  
17  
18  
19  
20  
21  
22  
23  
24  
25  
26  
27  
28  
29  
30  
31  
32  
33  
34  
35  
36  
37  
38  
39  
40  
41  
42  
43  
44  
45  
46  
47  
48  
49  
50  
51  
52  
53  
54  
55  
56  
57  
58  
59  
60

determining prognosis, and its relationship to other factors known to be abnormal in heart failure, including haemodynamics.

For Peer Review Only

## Materials and Methods:

**Patients.** Ninety-one patients undergoing 166 heart transplant assessments at the Freeman Hospital were recruited to the study during the period between September 2005 and May 2008, and were followed until February 2009. Patient details are described in table 1. This indicates that the majority of patients were not on intravenous inotropes, but nevertheless had advanced heart failure with high pulmonary arterial wedge pressures, low cardiac index, and high levels of circulating NT-proBNP. Eight patients were studied as part of their first hospitalisation for heart failure, the rest had an established diagnosis prior to assessment. Patients gave signed informed consent and the study was approved by the local ethics committee.

**Assessment.** The heart transplant assessment consists of a right heart catheterization performed with a Swan Ganz catheter and measurement of thermodilution cardiac outputs with central venous access. Transpulmonary gradient is defined as mean pulmonary artery pressure minus pulmonary arterial wedge pressure, and pulmonary vascular resistance as transpulmonary gradient divided by cardiac output. A cardiopulmonary stress test for determination of peak  $\text{VO}_2$  on a bicycle ergometer (Sensormedics, CA), a 2D echocardiogram acquired using British Society of Echocardiography guidelines<sup>17</sup>, and routine biochemical assessment. This consisted of urea and electrolytes, and liver function tests with all parameters measured using Olympus AU 2400 analysers with between batch CV of <3.0% for all parameters. Patients underwent a second or further assessment based on clinical need. Not all tests were necessarily performed at every patient assessment, though NT-proBNP levels were



1  
2  
3 taken at every assessment. Blood samples for serum NT pro-BNP were drawn at the time  
4  
5 of right heart catheterization from an internal jugular vein in those patients undergoing  
6  
7 haemodynamic studies, and in those not having right heart catheterization. Blood samples  
8  
9 were drawn by standard phlebotomy into plain tubes, centrifuged and serum was stored at  
10  
11 -40 C until analysis. Serum NT pro-BNP was measured using a noncompetitive EIA  
12  
13 immunoassay kit (chemiluminescent technology, measuring range 0.5 – 4100 pmol/L run  
14  
15 on an Elecsys 2010 platform using manufactures standards and controls (Roche  
16  
17 Diagnostics, Indianapolis, Indiana) with between batch CV % of <6%. Clinicians were  
18  
19 blinded to the results of NT-proBNP. Estimated glomerular filtration rate (eGFR) was  
20  
21 calculated according to the abbreviated modification of diet in renal disease equation:  $186$   
22  
23  $\times (\text{Creat} / 88.4)^{-1.154} \times (\text{Age})^{-0.203} \times (0.742 \text{ if female}) \times (1.210 \text{ if black})^{18}$ .  
24  
25  
26  
27  
28  
29  
30  
31

32 **Data Analysis and Statistics.** Correlations between variables were determined by  
33  
34 Spearman correlation coefficient. Patients were grouped into the following groups based  
35  
36 on follow up events: deteriorated, death, alive and non urgent transplant: Those patients  
37  
38 who required an in-hospital transplant, were nationally listed for urgent transplantation,  
39  
40 or had implantation of a ventricular assist device were considered deteriorated patients,  
41  
42 and these patients for analysis purposes were grouped with those that died, as they would  
43  
44 have reasonably have been expected to die without intervention within a short period of  
45  
46 time. Non-urgent transplant patients were censored at the time of transplant in the  
47  
48 survival analysis as the timing of transplant in these patients was not necessarily related  
49  
50 to impending death or deterioration. No patients were lost to follow up. Data are  
51  
52 presented as median with 25<sup>th</sup> and 75<sup>th</sup> percentiles. Single comparisons were performed  
53  
54  
55  
56  
57  
58  
59  
60

1  
2  
3 with the Mann Whitney *U* test, and proportions compared with the Exact test. Survival  
4  
5 curves were assessed using the Tarone-Ware test comparing curves above and below the  
6  
7 median, and Cox regression analysis used to determine influence of multiple factors on  
8  
9 outcomes. Predictive power of variables was compared using receiver operator curves.  
10  
11  
12  
13 SPSS 15 software was used and  $P < 0.05$  was considered statistically significant.  
14  
15  
16  
17  
18  
19  
20  
21  
22  
23  
24  
25  
26  
27  
28  
29  
30  
31  
32  
33  
34  
35  
36  
37  
38  
39  
40  
41  
42  
43  
44  
45  
46  
47  
48  
49  
50  
51  
52  
53  
54  
55  
56  
57  
58  
59  
60

**Results:**

**Correlation of NT-proBNP with other haemodynamic and biochemical variables:** NT-proBNP was significantly correlated with several haemodynamic parameters (figure 1) with the strongest relationship to cardiac index. There was also a significant relationship to circulating levels of albumin. Right atrial pressure also significantly correlated with levels of bilirubin, suggesting that elevated levels of bilirubin were related to hepatic congestion.

**Predictors of outcomes and survival curves:** Thirty-seven patients were alive and stable at the end of the study period, and 19 were classed as deteriorated and 15 had died, these latter 2 groups being grouped together. Twenty patients had non-urgent transplants. Univariate predictors of outcome are shown in table 2. The most significant predictors of outcome were NT-proBNP, right atrial pressure, cardiac index, and bilirubin. Survival curves are presented in figure 2. Cardiac index clearly has the greatest separation of curves between those that survived without events, and those that died or deteriorated. Other significant factors were NT-proBNP, bilirubin, **transpulmonary gradient**, albumin, and right atrial pressure. Though not shown, survival curves for sodium were significant ( $P<0.05$ ), systolic blood pressure were of borderline significance ( $P=0.06$ ), and pulmonary arterial wedge pressure was not significantly related to outcome. The Cox regression analysis is presented in table 3, determining which variables independently predicted outcomes. Cardiac index, bilirubin and NT-proBNP were used in the model. Cardiac index showed the greatest significance and the greatest incremental change in outcome relative to unit change in its value, though bilirubin and

1  
2  
3 NT-proBNP were also significantly related to outcome. When transpulmonary gradient  
4 was added to the model, it was not significantly related to survival. Receiver operator  
5  
6  
7  
8 curves showed the following areas under the curve: bilirubin 0.725, cardiac index 0.711,  
9  
10 and NT-proBNP 0.683.  
11

12  
13  
14  
15 **Serial measurements of NT-proBNP:** Significant increases in NT-proBNP were  
16 associated with adverse outcomes. In the 43 patients with 2 or more NT-proBNP levels  
17 outcomes and haemodynamic and biochemical correlates were studied (table 4). Patients  
18 were divided into 3 groups based on those that increased levels by > 50% from the first to  
19 second measurement, decreased by > 50%, or otherwise were stable ( $\leq 50\%$  change). In  
20 those with more than one sample, the lowest and highest values were taken. Fourteen  
21 patients had a 50% increase in NT-proBNP, and in these patients 9 had adverse  
22 outcomes. In the patients with a 50% decrease none out of 11 had adverse outcomes, and  
23 in the stable patients 4 out of 18 had adverse outcomes ( $P < 0.001$  and  $P < 0.05$  vs increased  
24 group respectively). In the > 50% increase and the stable groups, haemodynamics and  
25 biochemistries were unchanged. In those patients with a 50% decrease, there were  
26 significant reductions in right atrial pressure, pulmonary arterial systolic pressure  
27 pulmonary arterial wedge pressure and bilirubin.  
28  
29  
30  
31  
32  
33  
34  
35  
36  
37  
38  
39  
40  
41  
42  
43  
44  
45

46 In those patients with 3 or more levels of NT-proBNP a slope was derived and  
47 this was related to outcome (N=18). Patients were divided into those with a slope > 1 (i.e.  
48 increase, N=7) or  $\leq 1$  (i.e. stable or decrease, N=11). In those patients with a slope > 1, 4  
49 out of 7 patients had an adverse outcome, and in those with a slope  $\leq 1$ , 1 out of 11 had  
50 an adverse outcome ( $P < 0.05$ ).  
51  
52  
53  
54  
55  
56  
57  
58  
59  
60

1  
2  
3 Medications in patients with serial NT-proBNP data over the follow up period  
4  
5 were used slightly more frequently then compared to the data presented for the initial  
6  
7 assessment in table 1. At follow up, 86% of patients were on ACE inhibitors, 11%  
8  
9 angiotensin receptor blockers, 72%  $\beta$ -blockers, 70% spironolactone or eplerone, 95%  
10  
11 diuretics, and 11% inotropes.  
12  
13  
14  
15  
16  
17  
18  
19  
20  
21  
22  
23  
24  
25  
26  
27  
28  
29  
30  
31  
32  
33  
34  
35  
36  
37  
38  
39  
40  
41  
42  
43  
44  
45  
46  
47  
48  
49  
50  
51  
52  
53  
54  
55  
56  
57  
58  
59  
60

### Discussion:

Predicting outcome in patients with advanced heart failure is important when deciding timing regarding urgent listing for transplantation or implantation of a ventricular assist device<sup>1</sup>. We demonstrate in a cohort of advanced heart failure patients that several factors are important in predicting outcome. Most important is cardiac index, though NT-proBNP, and bilirubin levels are also significantly and independently related to outcomes. We sought to determine the additive role of NT-proBNP to other haemodynamic and biochemical markers of heart failure when assessing advanced heart failure patients, and found that NT-proBNP, whether by single or serial measurements, is an important determinant of outcome, and also significantly correlates with invasive haemodynamics, especially cardiac index and pulmonary arterial wedge pressure. Potentially, in situations where invasive haemodynamics are not available (such as in the majority of heart failure patients that are not considered eligible for transplantation), levels of bilirubin or NT-proBNP might provide simple alternative prognostic information. Thus, refractory right heart failure resulting in secondary hepatic dysfunction and elevated NT-proBNP levels could be used to guide clinicians as to when to refer for heart transplantation. No patients with NT-proBNP levels below 421 pg/mL had adverse outcomes.

**Pathophysiology of end-stage heart failure:** These results provide some insight into the mechanism of deterioration in end-stage heart failure. Clearly, cardiac output is the major determinant of outcome, and patients with a cardiac index  $< 2.0$  L/min/m<sup>2</sup> are at a high risk of adverse events, and underscores the importance of haemodynamics in

1  
2  
3 advanced heart failure. Bilirubin provides a measure of the effects of right atrial pressure  
4 and NT-proBNP correlates with haemodynamics and albumin. That bilirubin is an  
5 independent predictor of outcome relates to the importance of right ventricular  
6 dysfunction in the progression of heart failure. We know that right ventricular  
7 dysfunction is an important predictor of outcomes in heart failure<sup>19,20</sup>, and that elevation  
8 of the jugular venous pulsation predicts all-cause mortality in a broad range of  
9 cardiovascular diseases<sup>21</sup>. The relationship of albumin to NT-proBNP illustrates the  
10 importance of metabolic abnormalities in these patients.  
11  
12  
13  
14  
15  
16  
17  
18  
19  
20  
21  
22  
23  
24

#### 25 **NT-proBNP, haemodynamics, and outcomes in advanced heart failure:**

26  
27 Several studies have shown the ability of BNP to predict outcomes in congestive heart  
28 failure, including patients being assessed for heart transplantation. Our study provides  
29 useful new information in that we have studied a sicker group of patients than most  
30 previous studies<sup>10,11,16</sup>, with median levels of NT-proBNP of 2473 pg/mL, cardiac index  
31 of 2.0 L/min/m<sup>2</sup>, and left ventricular end-diastolic diameter of 7.0 mm. It is in the sickest  
32 patients that we derive the greatest benefits from transplantation and ventricular assist  
33 devices<sup>1</sup>. Whereas our study also shows the importance of measuring BNP, it also  
34 demonstrates the primary importance of invasive haemodynamics, and this may be a  
35 reflection of the severe nature of the heart failure in the current study. Gardner et al.<sup>16</sup>  
36 have studied NT-proBNP and haemodynamics in patients being assessed for  
37 transplantation, and found that NT-proBNP was the only predictor of all-cause mortality.  
38 Compared to that study our patients have more deranged haemodynamics and higher  
39 levels of NT-proBNP. Rothenberger et al.<sup>11</sup> studied a large group of patients being  
40  
41  
42  
43  
44  
45  
46  
47  
48  
49  
50  
51  
52  
53  
54  
55  
56  
57  
58  
59  
60

1  
2  
3 considered for transplantation and showed the importance of NT-proBNP in predicting  
4  
5 outcomes – though these patients were also considerably less sick than the current study  
6  
7  
8 with mean cardiac indices of  $2.9 \pm 0.8$  and  $2.7 \pm 0.7$  L/min/m<sup>2</sup> for dilated cardiomyopathies  
9  
10 and ischemic cardiomyopathies respectively. Recently the role of haemodynamics in  
11  
12 predicting outcome has been highlighted<sup>7,22</sup>, though these studies have not compared the  
13  
14 relative predictive power of haemodynamics and BNP. Mullens et al.<sup>7</sup> have shown in a  
15  
16 large cohort of ambulatory heart failure patients undergoing right heart catheterisation  
17  
18 that cardiac index was an independent predictor of outcome. The authors noted that most  
19  
20 current studies of establishing prognosis in heart failure excluded haemodynamic  
21  
22 measurements, though when they added invasive haemodynamics to the predictive  
23  
24 models this provided incremental benefit. Consistent with this Lang et al<sup>22</sup> have shown  
25  
26 that non-invasive measurements of peak exercise cardiac output and cardiac power are  
27  
28 independent predictors of outcome in patients with chronic heart failure.  
29  
30  
31  
32  
33  
34  
35

36  
37 **Limitations:** There are a relatively low number of patients studied, and there will  
38  
39 be a referral bias in patients being referred for transplantation, compared to patients that  
40  
41 are not. However, the transplant assessment process allows us to collect a large amount of  
42  
43 clinical, haemodynamic and biochemical data that is otherwise often not acquired. A  
44  
45 relatively small number of patients underwent cardiopulmonary stress testing (N=41) at  
46  
47 the time of the NT-proBNP assay, which at least in part, reflects the severity of the illness  
48  
49 of the patients as they were often unable to exercise either due to heart failure symptoms  
50  
51 or ventricular arrhythmias. The mean values of peak exercise oxygen consumption  
52  
53 ( $13.4 \pm 3.4$  mL/kg/min) then likely reflect the less sick proportion of the total patient  
54  
55  
56  
57  
58  
59  
60



1  
2  
3 group, and is not reflective of the group as a whole. We have not assessed left ventricular  
4  
5 function in detail, which has also been shown to provide important prognostic  
6  
7 information<sup>23</sup>.  
8  
9

10  
11  
12 **Conclusions:** Cardiac index is an important significant predictor of adverse  
13  
14 outcomes in advanced heart failure patients. In situations where this is not readily  
15  
16 available, bilirubin, and NT-proBNP will provide important prognostic information.  
17  
18  
19  
20  
21  
22  
23  
24  
25  
26  
27  
28  
29  
30  
31  
32  
33  
34  
35  
36  
37  
38  
39  
40  
41  
42  
43  
44  
45  
46  
47  
48  
49  
50  
51  
52  
53  
54  
55  
56  
57  
58  
59  
60

1  
2  
3 **Acknowledgements:** Supported in part by the UK National Institute for Health Research  
4  
5  
6 Newcastle upon Tyne Hospitals NHS Foundation Trust Biomedical Research Centre. We  
7  
8 are grateful to Roche Diagnostics for donating the NT-proBNP kits.  
9  
10

11  
12  
13 **Author Contributions:**

14  
15 MacGowan – all aspects of project.

16  
17  
18 Neely: Concept, design, laboratory analyses, data interpretation, critical review of article,  
19  
20 secure funding.

21  
22 Peaston: Concept, design, laboratory analyses, critical review of article.

23  
24  
25 Wrightson: Concept, design, data analysis, critical review of article.

26  
27 Parry – all aspects of project.  
28  
29  
30  
31  
32  
33  
34  
35  
36  
37  
38  
39  
40  
41  
42  
43  
44  
45  
46  
47  
48  
49  
50  
51  
52  
53  
54  
55  
56  
57  
58  
59  
60

**References:**

1. Lietz K, Miller LW. Improved survival of patients with end-stage heart failure listed for heart transplantation: analysis of organ procurement and transplantation network/U.S. United Network of Organ Sharing data, 1990-2005. *J Am Coll Cardiol* 2007; 50:1282-90
2. Mancini D, LeJemtel T, Aaronson K. Peak VO<sub>2</sub>. A simple yet enduring standard. *Circulation* 2000; 101:1080-1082
3. Mancini DM, Eisen H, Kussmaul W, Mull R, Edmunds LH, Wilson JR. Value of peak exercise oxygen consumption for optimal timing of cardiac transplantation in ambulatory patients with heart failure. *Circulation* 1991; 83:778-786.
4. Cheng V, Kazanagra R, Garcia A, Lenert L, Krishnaswamy P, Gard N, Clopton P, Maisel A. A rapid bedside test for B-type peptide predicts treatment outcomes in patients admitted for decompensated heart failure: a pilot study. *J Am Coll Cardiol* 2001; 37:386-91
5. Koglin J, Pehlivanli S, Schwaiblmair M, Vogeser M, Cremer P, vonScheidt W. Role of brain natriuretic peptide in risk stratification of patients with congestive heart failure. *J Am Coll Cardiol* 2001; 38:1934-41
6. MacGowan GA, Pohwani A, Murali S. Dynamic analysis of exercise oxygen consumption predicts outcomes in advanced heart failure. *Congest Heart Fail* 2007;13:313-318
7. Mullens W, Abrahams Z, Skouri HN, Taylor DO, Starling RC, Francis GS, Young JB, Tang WH. Prognostic evaluation of ambulatory patients with advanced heart failure. *Am J Cardiol* 2008; 101:1297-302

- 1  
2  
3 8. MacGowan GA, Kormos RL, McNamara DM, Alvarez RJ, Rosenblum WD,  
4 Pham S, Feldman AM, Murali SM. Predicting short term outcome in severely ill heart  
5 failure patients: Implications regarding listing for urgent cardiac transplantation and  
6 patient selection for temporary ventricular assist device support. *J Cardiac Fail* 1998, 4:  
7 169-175
- 8  
9 9. MacGowan GA, Mann DL, Kormos RL, Feldman AM, Murali S. Circulating  
10 interleukin-6 in severe heart failure. *Am J Cardiol* 1997; 79:1128-1131
- 11  
12 10. Gardner RS, Chong KS, Morton JJ, McDonagh TA. N-terminal brain  
13 natriuretic peptide, but not anemia is a powerful predictor of mortality in advanced heart  
14 failure. *J Cardiac Fail* 2005;11(5 Suppl): S47-53
- 15  
16 11. Rothenburger M, Wichter T, Schmid C, Stypmann J, Tjan TDT, Berendes E,  
17 Etz C, Pioux A, Loher A, Wenzelburger F, Drees G, Hoffmeier A, Breithardt G, Scheld  
18 HH. Aminoterminal pro type B natriuretic peptide as a predictive and prognostic marker  
19 in patients with chronic heart failure. *J Heart Lung Transplant* 2004; 23: 1189-97
- 20  
21 12. Miller WL, Hartman KA, Burritt MF, Grill DE, Rodeheffer RJ, Burnett JC,  
22 Jaffe AS. Serial biomarker measurements in ambulatory patients with chronic heart  
23 failure: the importance of change over time. *Circulation* 2007; 116:249-257
- 24  
25 13. Gardner RS, Chong KS, Morton JJ, McDonagh TA. A change in N-terminal  
26 pro-brain natriuretic peptide is predictive of outcome in patients with advanced heart  
27 failure. *Eur J Heart Failure* 2007; 9:166-271
- 28  
29 14. Iwanaga Y, Nishi I, Furuichi S, Noguchi T, Sase K, Kihara Y, Goto Y,  
30 Nonogi H. B-type natriuretic peptide strongly reflects diastolic wall stress in patients with  
31 chronic heart failure. *J Am Coll Cardiol* 2006; 47:42-8
- 32  
33  
34  
35  
36  
37  
38  
39  
40  
41  
42  
43  
44  
45  
46  
47  
48  
49  
50  
51  
52  
53  
54  
55  
56  
57  
58  
59  
60

- 1  
2  
3  
4  
5  
6  
7  
8  
9  
10  
11  
12  
13  
14  
15  
16  
17  
18  
19  
20  
21  
22  
23  
24  
25  
26  
27  
28  
29  
30  
31  
32  
33  
34  
35  
36  
37  
38  
39  
40  
41  
42  
43  
44  
45  
46  
47  
48  
49  
50  
51  
52  
53  
54  
55  
56  
57  
58  
59  
60
15. Shah MR, Hasselblad V, Tasissa G, Christenson RH, Binanay C, O'Connor CM, Ohman EM, Stevenson LW, Califf RM. Rapid assay brain natriuretic peptide and troponin I in patients hospitalized with decompensated heart failure (from the Evaluation Study of Congestive Heart Failure and Pulmonary Artery Catheterization Effectiveness Trial). *Am J Cardiol* 2007; 100:1427-1433
  16. Gardner RS, Henderson G, McDonagh TA. The prognostic use of right heart catheterization data in patients with advanced heart failure: how relevant are invasive procedures in the risk stratification of advanced heart failure in the era of neurohormones? *J Heart Lung Transplant* 2005; 24:303-9
  17. <http://www.bsecho.org/index>. Jan 14th, 2010
  18. Poggio ED, Wang X, Greene T, Van Lente F, Hall PM. Performance of the modification of diet in renal disease and Cockcroft-Gault equations in the estimation of GFR in health and in chronic kidney disease. *J Am Soc Nephrol* 2005;16:459-466
  19. Kjaergaard J, Akkan D, Iversen KK, Kober L, Torp-Pederson C, Hassager C. Right ventricular dysfunction as an independent predictor of short- and long-term mortality in patients with heart failure. *Eur J Heart Fail* 2007; 9:610-6
  20. Di Salvo TG, Mathier M, Semigran MJ, Dec GW. Preserved right ventricular ejection fraction predicts exercise capacity and survival in advanced heart failure. *J Am Coll Cardiol* 1995; 25:1143-53
  21. Damman K, van Deursen VM, Navis G, Voors AA, van Veldhuisen DJ, Hillege HL. Increased central venous pressure is associated with impaired renal function and mortality in a broad spectrum of patients with cardiovascular disease. *J Am Coll Cardiol* 2009; 53:582-588

1  
2  
3 22. Lang CC, Karlin P, Haythe J, Lim TK, Mancini DM. Peak cardiac power  
4 output, measured noninvasively, is a powerful predictor of outcome in chronic heart  
5 failure. *Circ Heart Fail* 2009; 2:33-38  
6  
7  
8

9  
10 23. Aaronson KD, Schwartz JS, Chen TM, Wong KL, Goin JE, Mancini DM.  
11 Development and prospective validation of a clinical index to predict survival in  
12 ambulatory patients referred for cardiac transplant evaluation. *Circulation* 1997;95:2660-  
13  
14  
15  
16

17 7.  
18  
19  
20  
21  
22  
23  
24  
25  
26  
27  
28  
29  
30  
31  
32  
33  
34  
35  
36  
37  
38  
39  
40  
41  
42  
43  
44  
45  
46  
47  
48  
49  
50  
51  
52  
53  
54  
55  
56  
57  
58  
59  
60

**Figure Legends:**

**Figure 1:** Correlations between  $\log_{10}$  NT-proBNP (pg/mL) and cardiac index (A, L/min/m<sup>2</sup>), pulmonary arterial wedge pressure (B, mmHg), right atrial pressure (C, mmHg), pulmonary arterial systolic pressure (D, mmHg), and albumin (E, g/L), and correlation of right atrial pressure with bilirubin (E,  $\mu\text{mol/L}$ ) to illustrate that elevation of bilirubin was related to increased levels of right atrial pressure. As NT-proBNP is not normally distributed it is transformed to  $\log_{10}$ .

**Figure 2:** Kaplan-Meier survival curves based on variables divided into 2 groups based on median values, showing significant differences in survival for cardiac index (A), NT-proBNP (B), bilirubin (C), **transpulmonary gradient (D)**, albumin (E), and right atrial pressure (RA, caption F).

**Table 1:** Baseline characteristics of patients. For patients with more than one assessment, these data are from the first assessment.

Variable:	
<b>Number</b>	91
<b>Follow up duration (days)</b>	359 (110,695)
<b>Age</b>	49 (40,58)
<b>Gender</b>	32% Female
<b>Diagnosis</b>	Idiopathic: 50%
	Ischemic 37%
	Congenital 2%
	Other 11%
<b>NYHA class</b>	2: 5%
	3: 66%
	4: 29%
<b>Medication</b>	ACEi: 74%
	ARB: 18%
	BB: 69%
	Spironolactone/Eplerone: 63%
	Diuretics: 99%
	Inotropes: 6%
<b>LVEDD (cm)</b>	7.0 (6.4,7.6)
<b>Right Atrial Pressure (mmHg)</b>	10 (6.0,13)
<b>Pulmonary Arterial Systolic Pressure (mmHg)</b>	46 (37,62)
<b>Pulmonary Arterial Wedge Pressure (mmHg)</b>	25 (17,31)
<b>Cardiac Index (L/min/m<sup>2</sup>)</b>	2.0 (1.7,2.4)
<b>Heart Rate (beats/min)</b>	80 (70,88)
<b>Systolic Blood Pressure (mmHg)</b>	100 (94,110)
<b>Diastolic Blood Pressure (mmHg)</b>	69 (60,74)
<b>eGFR (ml/min/1.73m<sup>2</sup>)</b>	62 (46,74)
<b>Serum Sodium (mmol/L)</b>	136 (133,138)
<b>NT-proBNP (pg/mL)</b>	2473 (1445,5278)

ACEi: angiotensin converting enzyme inhibitor; ARB: angiotensin receptor blocker; BB:  $\beta$ -adrenergic receptor antagonist; LVEDD: Left ventricular end-diastolic dimension; eGFR: estimated glomerular filtration rate. Data are median (25<sup>th</sup> and 75<sup>th</sup> percentiles).



**Table 2:** Univariate predictors of outcome (alive patients versus those who deteriorated or died). The twenty patients that had non-urgent transplants are excluded from this analysis.

	Alive (N=37)	Deterioration (N=19) + Death (N=15)	P
Days Follow up	809 (475,969)	130 (31,413)	<0.0001
Age	48 (41,54)	55 (39,60)	NS
NT-proBNP (pg/mL)	1939 (788,3041)	3428 (2068,7163)	=0.001
Right Atrial Pressure (mmHg)	7 (4,10)	12 (9,18)	<0.0001
PA Systolic Pressure (mmHg)	45 (30,64)	46 (37,55)	NS
PA Wedge Pressure (mmHg)	20 (11,28)	25 (22,29)	<0.05
Cardiac Index (L/min/m <sup>2</sup> )	2.3 (2.0,2.8)	1.8 (1.6,2.1)	<0.0001
Transpulmonary Gradient (mmHg)	10 (8,15)	6 (5,11)	<0.005
Pulmonary Vascular Resistance (Wood units)	2.4 (1.5,3.7)	2.0 (1.3,3.0)	NS
Heart Rate (beats/min)	76 (63,85)	79 (73,97)	NS
Systolic Blood Pressure (mmHg)	105 (98,119)	96 (90,105)	<0.005
Diastolic Blood Pressure (mmHg)	68 (60,75)	66 (59,72)	NS
LVEDD (cm)	6.9 (6.4,7.6)	7.1 (6.6,7.8)	NS
Peak VO <sub>2</sub> (mL/kg/min)	14.3 (11.3,16.9)	12.3 (9.9,14.3)	NS
Sodium (mmol/L)	136 (134,138)	135 (130,137)	<0.05
Albumin (g/L)	44 (40,47)	41 (38,43)	<0.01
Haemoglobin (g/dL)	13.9 (12.6,15.2)	13.6 (12.6,14.3)	NS
Bilirubin (µmol/L)	13 (9,21)	26 (14,41)	=0.001
eGFR (ml/min/1.73m <sup>2</sup> )	64 (51,77)	58 (44,68)	NS

Peak VO<sub>2</sub>: peak exercise oxygen consumption; LVEDD: Left ventricular end-diastolic dimension; eGFR: estimated glomerular filtration rate;

Reference intervals: sodium:135-145 mmol/L; albumin 34-50 g/L; haemoglobin 13.0-18.0 g/dL; bilirubin 0-19 µmol/L. Data are median (25<sup>th</sup> and 75<sup>th</sup> percentiles).

**Table 3:** Cox regression analysis.

<b>Variable</b>	<b>Significance</b>	<b>Exp(B)</b>
<b>Cardiac Index</b>	0.0001	0.253
<b>Bilirubin</b>	0.001	1.031
<b>NT-proBNP</b>	0.036	1.001

Exp(B) is the predicted change in the hazard for a unit increase in the predictor

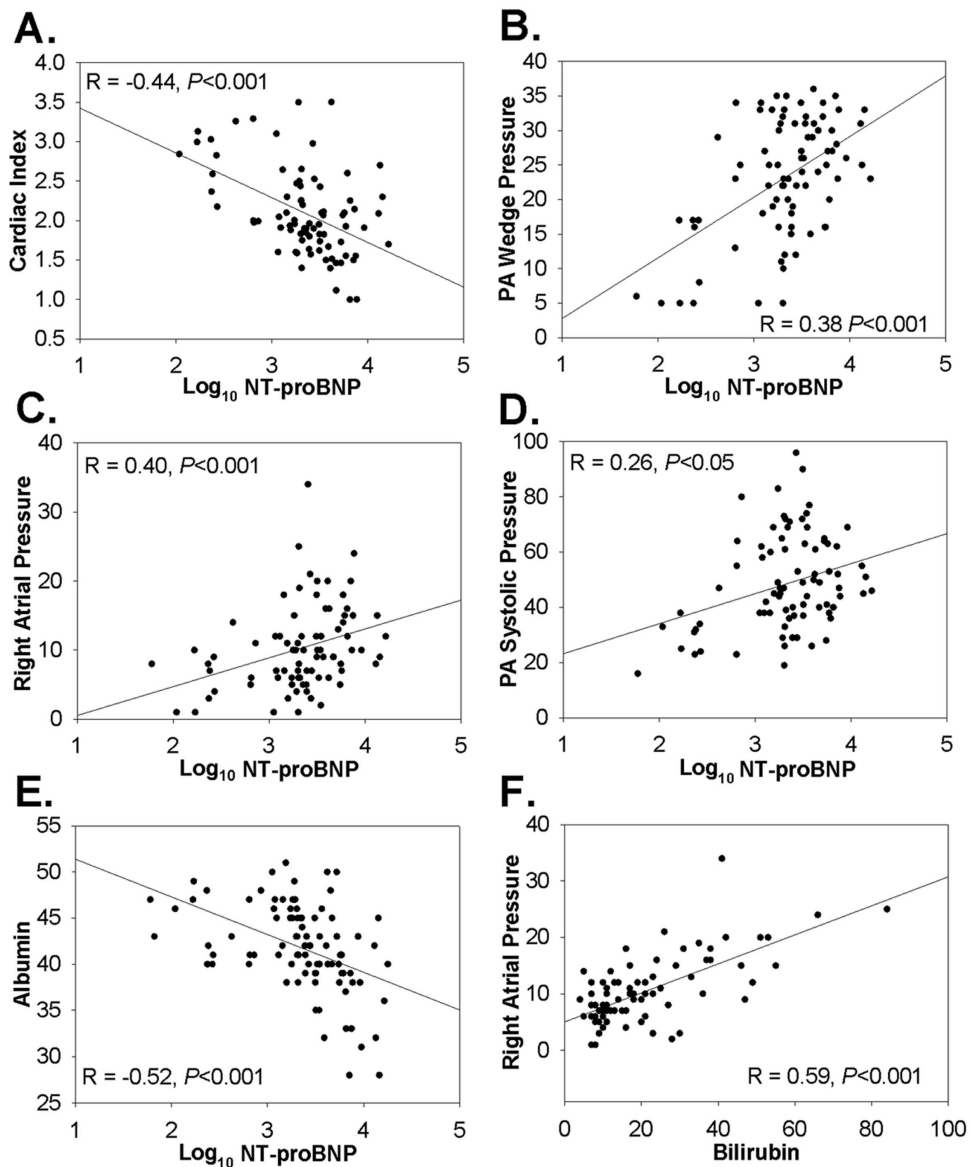
1  
2  
3  
4  
5  
6  
7  
8  
9  
10  
11  
12  
13  
14  
15  
16  
17  
18  
19  
20  
21  
22  
23  
24  
25  
26  
27  
28  
29  
30  
31  
32  
33  
34  
35  
36  
37  
38  
39  
40  
41  
42  
43  
44  
45  
46  
47  
48  
49

**Table 4:** Serial Measurements of NT-proBNP and relationship to outcomes, haemodynamics and biochemistries. Groups are divided into those with increases of > 50%, decreases of > 50%, or otherwise stable levels.

Measurements	>50% Increase		>50% Decrease		Stable	
	First	Second	First	Second	First	Second
Median NT-proBNP	1863	5692	4694	1066	2962	2265
(25 <sup>th</sup> ,75 <sup>th</sup> quartiles)	(1409,3309)	(3755,7624)	(1815,14632)	(656,2274)	(1613,4654)	(1117,4097)
Interval between tests	207 (107,308)		120 (50,217)		110 (66,273)	
Adverse outcomes (x/N)	9/14		0/11††		4/18†	
Right Atrial Pressure	9 (6,12)	12 (5,14)	10 (9,15)	6 (3,11)*	10 (5,14)	5 (3,10)
PA Systolic Pressure	51 (42,61)	55 (45,64)	64 (49,73)	38 (28,68)*	44 (33,71)	44 (27,58)
PA Wedge Pressure	23 (22,27)	27 (23,32)	31 (23,31)	16 (5,22)*	21 (15,29)	19 (8,23)
Cardiac Index	2.0 (1.5,2.4)	2.0 (1.4,2.7)	2.3 (1.4,3.1)	2.6 (2.2,2.6)	1.9 (1.8,2.6)	2.0 (1.8,2.4)
Sodium	134 (131,138)	134 (130,136)	139 (137,141)	138 (137,141)	138 (134,139)	137 (136,139)
Bilirubin	14 (11,21)	19 (12,33)	21 (13,25)	11 (9,16)*	16 (10,21)	15 (12,19)
Albumin	43 (42,47)	42 (32,43)	40 (40,45)	43 (42,46)	43 (40,46)	43 (41,46)

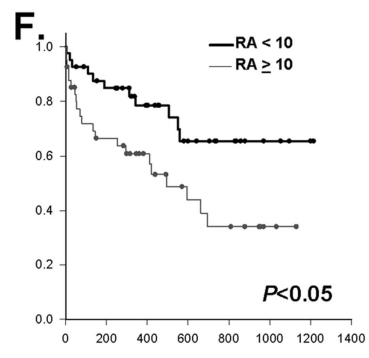
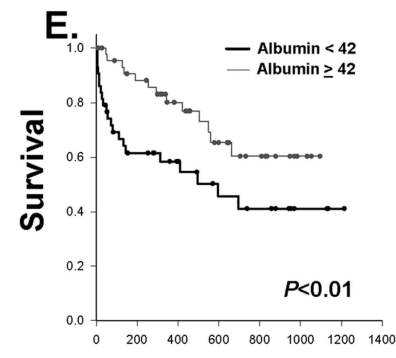
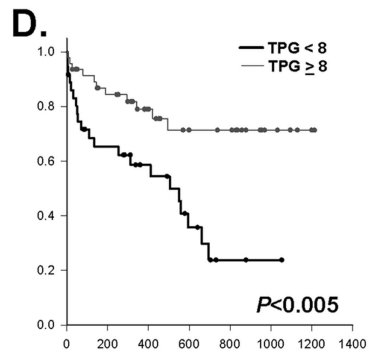
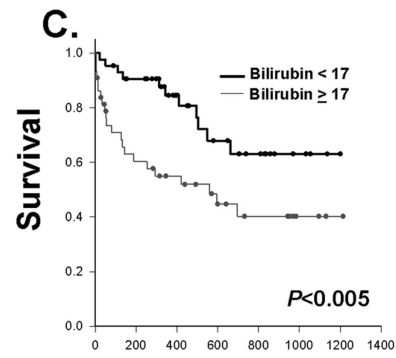
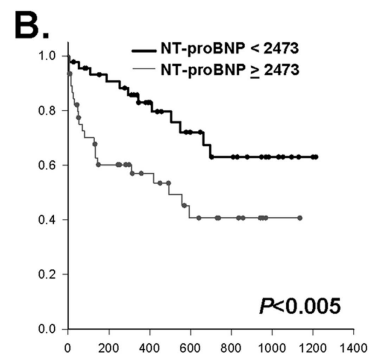
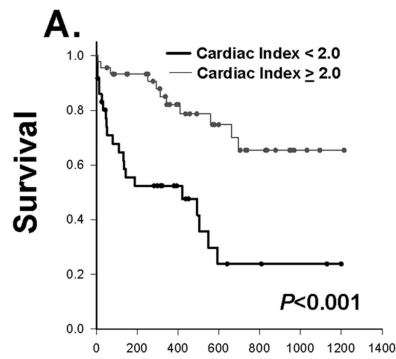
Data are median (25<sup>th</sup>,75<sup>th</sup> quartiles). NT-proBNP (pg/mL); Interval (days); Adverse outcomes: expressed as proportion of patients deteriorating or dying of total number; Right Atrial Pressure (mmHg); PA Systolic Pressure: pulmonary arterial systolic pressure (mmHg), PA Wedge Pressure: pulmonary arterial wedge pressure (mmHg), Cardiac Index (L/min/m<sup>2</sup>); Sodium (mmol/L), Bilirubin (μmol/L), Albumin (g/L). For haemodynamic and biochemistry data there are N=6-7 in the increased group, N=6-9 in the decreased group, and N=10-12 in the stable group, all paired data. \* P<0.05 vs column to immediate left; † P<0.05 and †† P<0.001 vs outcomes for 50% increase group

1  
2  
3  
4  
5  
6  
7  
8  
9  
10  
11  
12  
13  
14  
15  
16  
17  
18  
19  
20  
21  
22  
23  
24  
25  
26  
27  
28  
29  
30  
31  
32  
33  
34  
35  
36  
37  
38  
39  
40  
41  
42  
43  
44  
45  
46  
47  
48  
49  
50  
51  
52  
53  
54  
55  
56  
57  
58  
59  
60



99x123mm (600 x 600 DPI)

1  
2  
3  
4  
5  
6  
7  
8  
9  
10  
11  
12  
13  
14  
15  
16  
17  
18  
19  
20  
21  
22  
23  
24  
25  
26  
27  
28  
29  
30  
31  
32  
33  
34  
35  
36  
37  
38  
39  
40  
41  
42  
43  
44  
45  
46  
47  
48  
49  
50  
51  
52  
53  
54  
55  
56  
57  
58  
59  
60



Time (days)

Time (days)

99x144mm (600 x 600 DPI)