



Maintenance treatment with azacytidine for patients with high-risk myelodysplastic syndromes (MDS) or acute myeloid leukaemia following MDS in complete remission after induction chemotherapy

Journal:	<i>British Journal of Haematology</i>
Manuscript ID:	BJH-2010-00194.R1
Manuscript Type:	Ordinary Papers
Date Submitted by the Author:	11-Apr-2010
Complete List of Authors:	<p>Grövdal, Michael; Karolinska Institutet, Karolinska University Hospital Huddinge, Department of Medicine, Centre for Experimental Haematology</p> <p>Karimi, Mohsen; Karolinska Institutet, Karolinska University Hospital Huddinge, Department of Medicine, Centre for Experimental Haematology</p> <p>Khan, Rasheed; Karolinska Institutet, Karolinska University Hospital Huddinge, Department of Medicine, Centre for Experimental Haematology</p> <p>Aggerholm, Anni; Aarhus University Hospital, Department of Haematology</p> <p>Antunovic, Petar; Linköping University Hospital, Department of Haematology</p> <p>Astermark, J; Malmö University Hospital, Department for Haematology and Coagulation Disorders</p> <p>Bernell, Per; Karolinska Universtiy Hospital Solna, Department of Haematology</p> <p>Engström, Lena-Maria; University Hospital of Norrland, Department of Haematology</p> <p>Kjeldsen, Lars; Rigshospitalet, Department of Haematology</p> <p>Linder, Olle; Örebro University Hospital, Department of Medicine</p> <p>Nilsson, Lars; Lund University Hospital, Haematopoietic Stem Cell Laboratory and Department of Haematology</p> <p>Olsson, Anna; Sahlgrenska University Hospital, Department of Haematology</p> <p>Holm, Mette; Aarhus University Hospital, Department of Haematology</p> <p>Tangen, Jon; Ullevål University Hospital, Department of Haematology</p> <p>Wallvik, Jonas; Sundsvall Hospital, Department of Medicine</p> <p>Öberg, Gunnar; Academic Hospital, Department of Haematology</p> <p>Hokland, Peter; Aarhus University Hospital, Department of</p>

1
2
3
4
5
6
7
8
9
10
11
12
13
14
15
16
17
18
19
20
21
22
23
24
25
26
27
28
29
30
31
32
33
34
35
36
37
38
39
40
41
42
43
44
45
46
47
48
49
50
51
52
53
54
55
56
57
58
59
60

	Haematology Jacobsen, Sten; Lund University Hospital, Hematopoietic Stem Cell Laboratory and Department of Hematology Porwit, Anna; Karolinska University Hospital Solna, Department of Pathology Hellström-Lindberg, Eva; Karolinska Institutet, Karolinska University Hospital Huddinge, Department of Medicine, Centre for Experimental Haematology
Key Words:	MYELODYSPLASTIC SYNDROME, AZACYTIDINE, CLINICAL STUDIES, MAINTENANCE THERAPY, DNA METHYLATION



For Peer Review

1
2
3 **Maintenance treatment with azacytidine for patients with high-risk**
4 **myelodysplastic syndromes (MDS) or acute myeloid leukaemia following MDS**
5 **in complete remission after induction chemotherapy**
6
7
8
9
10
11
12
13

14 Michael Grövdal,¹ Mohsen Karimi,¹ Rasheed Khan,¹ Anni Aggerholm,² Petar
15 Antunovic,³ Jan Astermark,⁴ Per Bernell,⁵ Lena-Maria Engström,⁶ Lars Kjeldsen,⁷
16 Olle Linder,⁸ Lars Nilsson,⁹ Anna Olsson,¹⁰ Mette Skov Holm,² Jon Magnus Tangen,¹¹
17 Jonas Wallvik,¹² Gunnar Öberg,¹³ Peter Hokland,² Sten Eirik Jacobsen,⁹ Anna
18 Porwit¹⁴ and Eva Hellström-Lindberg,¹
19
20
21
22
23
24
25
26

27 ¹Division of Haematology, Department of Medicine, **Centre for Experimental Haematology**,
28 Karolinska Institutet, Karolinska University Hospital Huddinge, Stockholm, Sweden, ²Department of
29 Haematology, Aarhus University Hospital, Aarhus, Denmark, ³Department of Haematology, Linköping
30 University Hospital, Linköping, Sweden, ⁴Department for Haematology and Coagulation Disorders,
31 Malmö University Hospital, Malmö, Sweden of Haematology, ⁵Karolinska University Hospital Solna,
32 Stockholm, Sweden, ⁶Department of Haematology, University of Norrland, Umeå, Sweden,
33 ⁷Department of Haematology, Rigshospitalet, København, Denmark, ⁸Department of Medicine, Örebro
34 University Hospital, Örebro, Sweden, ⁹Hematopoietic Stem Cell Laboratory and Department of
35 Hematology, Lund University Hospital, Lund, Sweden, ¹⁰Department of Haematology, Sahlgrenska
36 University Hospital, Göteborg, Sweden, ¹¹Department of Haematology, Ullevål University Hospital,
37 Oslo, Norway, ¹²Department of Medicine, Sundsvall Hospital, Sundsvall, Sweden, ¹³Department of
38 Haematology, Academic Hospital, Uppsala, Sweden, ¹⁴Department of Pathology, Karolinska University
39 Hospital Solna, Stockholm, Sweden
40
41
42
43
44
45
46
47
48
49
50
51
52
53
54
55
56

57 **Running head:** Azacytidine maintenance in high-risk MDS
58

59 **Key words:** Myelodysplastic syndrome, Azacytidine, Clinical Studies, Maintenance
60 therapy, DNA-methylation,

1
2
3 **Corresponding author:** Michael Grövdal. Division of Haematology, Department of
4
5
6 Medicine, Karolinska Institutet, Karolinska University Hospital Huddinge, 141 86
7
8 Stockholm, Sweden. Telephone: +46 8 616 3502. E-mail: michael.grovdal@ki.se
9

10
11 **Funding:** This work was supported by the Nordic Cancer Union, the Swedish Cancer
12
13 Society, **the Cancer Society in Stockholm**, and by an unrestricted grant from
14
15 Pharmion 2004-2006 encompassing free drug and a limited support for GCP-costs
16
17

18
19 **Disclosures:** EHL, JMT and LK have been speaking at Celgene-supported
20
21 educational events in the Nordic countries. EHL has been part of the advisory board
22
23 for MDS 001 (azacytidine) and MDS 004 (lenalidomide).
24
25
26
27
28
29
30
31
32
33
34
35
36
37
38
39
40
41
42
43
44
45
46
47
48
49
50
51
52
53
54
55
56
57
58
59
60

Summary

This prospective phase II study is the first to assess feasibility and efficacy of maintenance 5-azacytidine for older patients with **high-risk MDS, CMML and MDS-AML** syndromes in complete remission (CR) after induction chemotherapy. Sixty patients were enrolled and treated by standard induction chemotherapy. Patients that reached CR started maintenance therapy with subcutaneous azacytidine, 5/28 days until relapse. Promoter-methylation status of **CDKN2B (P15)**, *e-cadherin* and *hypermethylated in cancer 1* was examined pre-induction, in CR and 6, 12 and 24 months post CR. Twenty-four (40%) patients achieved complete remission after induction chemotherapy and 23 started maintenance treatment with azacytidine. Median CR duration was 13.5 months, >24 months in 17% of the patients, and 18-30.5 months in the four patients with trisomy 8. CR duration **was not associated with P15** methylation status or karyotype. Median overall survival was 20 months. Hypermethylation of *E-cadherin* was significantly associated with low CR rate, early relapse, and short OS (P=0.003). 5-azacytidine treatment in a dose of 60 mg/m² was well tolerated. Grade III-IV thrombocytopenia and neutropenia occurred after 9.5 and 30% of the cycles, respectively, while hemoglobin levels increased during treatment. 5-azacytidine treatment is safe, feasible and may be of benefit in a subset of patients.

Introduction

Until recently, standard treatment in the Nordic countries for patients with high-risk myelodysplastic syndromes (MDS) or acute myeloid leukaemia (AML) following MDS (MDS-AML) not eligible for stem cell transplantation has been standard induction chemotherapy **or only supportive care including palliative chemotherapy**.

Several studies show that around 50% (41-56%) of such patients reach a complete remission (CR). However, CR durations are short with almost no long-term survivors (Hast *et al*, 2003; Ganser *et al*, 2000; Kantarjian *et al*, 2006; Hofmann *et al*, 2007; Wattel *et al*, 1997) and standard consolidation chemotherapy is not associated with prolonged CR (Hast *et al*, 2003; Ganser *et al*, 2000; Hofmann *et al*, 2007; Wattel *et al*, 1997; Kantarjian *et al*, 2006). The dismal prognosis for these patients lead to the search for other treatment regimens, where demethylating therapy is the most promising. In 2002, a randomized study comparing 5-azacytidine (azacytidine) to best supportive care only, reported prolonged time to the composite endpoint leukemic transformation or death in the azacytidine treated group (Silverman *et al*, 2002). **Also decitabine, another hypomethylating agent, had showed to be effective in MDS (Lübbert *et al*, 2001)**. This led us to hypothesize that maintenance treatment with azacytidine for patients in CR after induction chemotherapy might prolong time to relapse and survival. Azacytidine was initially used in high-doses for the treatment of patients with AML but was abandoned in favour for other agents due to severe gastrointestinal side effects and prolonged myelotoxicity (O'Dwyer & Maslak, 2008). In lower doses, however, azacytidine was later shown to cause DNA demethylation by irreversible inhibition of DNA methyl transferases (Singal & Grinder, 2009; Esteller, 2008; Grønbaek *et al*, 2008). The exact mechanisms of action in vivo are not known but it is clear that it can cause hypomethylation and re-expression of

1
2
3 previously silenced genes as well as induction of apoptosis **and immunomodulation**
4 (Guo *et al*, 2006; Berg *et al*, 2007; Schmeltz *et al*, 2005; Khan *et al*, 2008; **Sánchez-**
5
6 **Abarca *et al*, 2010**). Genes previously known to be frequently methylated in MDS
7
8 include ***CDKN2B (P15)***, *E-cadherin (CDH)* and *Hypermethylated in Cancer 1 (HIC)*.
9
10 Promoter-methylation of these genes has also been reported to be associated with
11
12 poor prognosis and leukemic transformation of MDS (Aggerholm *et al*, 2006; Tien *et*
13
14 *al*, 2001; Christiansen *et al*, 2003). We recently reported a strong association
15
16 between promoter-methylation of *CDH* or of more than one of these three genes and
17
18 failure to induction chemotherapy (Grövdal *et al*, 2007). This study was designed to
19
20 assess the feasibility and efficacy of long-term maintenance treatment with
21
22 azacytidine in a cohort of elderly patients with high-risk MDS and AML following MDS
23
24 in CR after conventional induction chemotherapy.
25
26
27
28
29
30
31
32
33
34

35 **Materials and methods**

36 *Patients*

37
38
39 Patients with intermediate-2 or high-risk MDS, chronic myelomonocytic leukaemia
40
41 (CMML) with >10% blasts or with AML following a documented MDS phase,
42
43 according to the WHO 2001 classification and the International Prognostic Scoring
44
45 System (IPSS), were eligible for the protocol (Jaffe *et al*, 2001; Greenberg *et al*,
46
47 1997). **Patients should not be eligible for AML-like induction chemotherapy**
48
49 **followed by intensive consolidation courses and allogeneic stem cell**
50
51 **transplantation**, but should be considered to tolerate at least one cycle of standard
52
53 induction chemotherapy. The study was approved by ethical committees and medical
54
55 product agencies of the participating Nordic countries. All patients gave their written
56
57
58
59
60

1
2
3 informed consent. Diagnosis as well as CR was verified at a central
4
5 haematopathology unit (A.P.) according to established Nordic MDS Group routines
6
7 (Grövdal *et al*, 2007; Jädersten *et al*, 2005). Bone marrow cellularity was assessed
8
9 on bone marrow biopsies and the percentage of blasts in bone marrow smears was
10
11 determined by counting 500 cells in representative areas. Cytogenetic analyzes were
12
13 performed locally only at enrolment, using standard techniques and patients were
14
15 classified according to the IPSS into good, intermediate, or poor prognostic
16
17 subgroups (Greenberg *et al*, 1997). The criteria for CR were <5% bone marrow
18
19 blasts, stable haemoglobin >100 g/L, WBC >1.5 x 10⁹ with normal differential count
20
21 and platelets >100 x 10⁹. Persistent dysplastic features were allowed.
22
23
24
25
26

27 *Study design*

28
29
30 Induction chemotherapy consisted of a DA regimen: daunorubicin 60 mg/m² i.v. day 1
31
32 and 2 and cytarabine 150 mg/m² s.c. or i.v. days 1 to 7. Patients could have a second
33
34 induction if they did not reach CR on the first one and were judged fit enough by
35
36 treating physician. No standard consolidation courses were given. **Patients that did**
37
38 **not reach CR were given best supportive care with or without low-dose**
39
40 **palliative chemotherapy, such as hydroxyurea, according to the choice of the**
41
42 **treating physician and were followed only for survival.** Patients achieving CR
43
44 started maintenance therapy with azacytidine given subcutaneously 5/28 days
45
46 starting within 28 days from CR. The protocol specifically aimed at administering this
47
48 treatment on an outpatient basis, and prolonged grade 4 haematological adverse
49
50 events therefore constituted a basis for dose reduction. Initial azacytidine dose was
51
52 75 mg/m² but, due to high incidence of grade 4 neutropenia in the first five enrolled
53
54 patients, the protocol was amended and the starting dose was reduced to 60 mg/m².
55
56
57
58
59
60 Further reduction of the azacytidine dose was also allowed to avoid severe

1
2
3
4
5
6
7
8
9
10
11
12
13
14
15
16
17
18
19
20
21
22
23
24
25
26
27
28
29
30
31
32
33
34
35
36
37
38
39
40
41
42
43
44
45
46
47
48
49
50
51
52
53
54
55
56
57
58
59
60

cytopenias and hospitalization. Patients continued on azacytidine until relapse or intolerable toxicity. Anti-emetic treatment was given prior to azacytidine. The primary endpoint was duration of CR and secondary endpoints were overall survival and the impact of pre-treatment parameters on prognosis.

Bone marrow sampling, DNA isolation and bisulfite modification

Bone marrow for methylation analyzes was sampled in standardized flasks and medium at enrolment, at CR and 6, 12 and 24 months after CR. Samples were shipped by DHL using a <24 h service to a central laboratory (Lund) for isolation of mononuclear cells (MNC) and CD34+ cells by density gradient technique by Lymphoprep (Axis Shield) and magnetic bead cell sorting (MACS, Miltenyi Biotech) as previously described (Grövdal *et al*, 2007; Nilsson *et al*, 2002). Cells were stored as pellet at -80 °C. Genomic DNA was isolated from MNC and CD34+ cells using the QiAmp DNA mini kit (Qiagen) according to manufacturer's guidelines. Bone marrow sampled in CR and during follow up frequently rendered an insufficient CD34+ yield, and methylation analyzes were therefore consequently performed on un-separated MNC, after first confirming a strong correlation between methylation results in CD34+ and MNC on the pre-induction samples ($P < 0.001$) (Grövdal *et al*, 2007). The amount of DNA obtained was measured by spectrophotometer (ND-100, Nano-Drop Technologies). DNA was further modified by sodium bisulfite as previously described (Grövdal *et al*, 2007; Zeschnigk *et al*, 1997).

Polymerase chain reaction and denaturing gradient gel electrophoresis (DGGE)

PCR specific for bisulfite-reacted *P15*, *CDH* and *HIC* promoters was carried out as previously described (Aggerholm *et al*, 2006; Grövdal *et al*, 2007). **Primer**

1
 2
 3 sequences were: [CCGCC]-GTTAGGAGTTTTTTTTTTAGAAAGTAATTT (*P15*: F),
 4
 5 [GC3]-AAACTAACTCAACTTCATTACCCTC (*P15*: R), [GC1]-GTTTATTTGGT-
 6
 7 TGTAGTTA (*CDH*: F), CTCCAAAACCCATAACTAAC (*CDH*: R), [GC1]-ATAATT-
 8
 9 AGAGTATTAAGGGTTTTTTGTG (*HIC*: F), [CGCCCGCCGC]-CACCCAAAACCT-
 10
 11 TAAATAAACACTACTA (*HIC*: R). Nucleotides in brackets represent GC-
 12
 13 clamps; [GC1] = CGCCCGCCGCGCCCGCGCCCGTCCCGCCGCCCCCGCCCG,
 14
 15 [GC3] = CCCGCCGCCCGCCGCTCGCCCGCCGCGCCCGCGCCCGTCCCGCC-
 16
 17 GCCCCCGCCCG. PCR results were examined by electrophoresis in a 2.5% agarose
 18
 19 gel. Fifteen to 20 μ L of the PCR product was loaded onto a 10% denaturant/6%
 20
 21 polyacrylamide -70% denaturant/12% polyacrylamide gradient gel. A fully methylated
 22
 23 control (Sssl) and an unmethylated control (peripheral blood lymphocytes) were also
 24
 25 loaded to each gel. Gels were run at 160 V for 270 minutes in 1 x Tris acetate/EDTA
 26
 27 buffer kept at a constant temperature specific for each gene examined as previously
 28
 29 described (Aggerholm *et al*, 2006; Grövdal *et al*, 2007). After the electrophoresis the
 30
 31 gels were stained in Tris acetate/EDTA buffer containing ethidium bromide (2 mg/mL)
 32
 33 and photographed under UV transillumination. Samples were scored as methylated
 34
 35 when **bands were** present on the gels below the band corresponding to the
 36
 37 unmethylated control (Aggerholm *et al*, 2006; Cremonesi *et al*, 1997).
 38
 39
 40
 41
 42
 43
 44
 45

46 Pyrosequencing

47
 48
 49 In a fraction of samples, the DGGE results for *P15* (N=29) and *CDH* (N=19) were
 50
 51 compared in a blinded way to methylation analysis by pyrosequencing according to a
 52
 53 previously described method with a congruence of 80% and 84% respectively (Tost
 54
 55 *et al*, 2007; Geli *et al*, 2008). In this article, DGGE results are used when referring to
 56
 57 methylation status data.
 58
 59
 60

Statistics

Median haemoglobin levels during azacytidine maintenance were compared using Wilcoxon signed-rank test. Survival analyzes were performed by the Kaplan-Meyer method and compared using the Log Rank test. The size of the material did not allow for an extended multivariate analyzes to be performed. All statistical calculations were carried out using SPSS 15.0 software for windows (SPSS Inc, Chicago, IL, USA).

Results

Patients

Sixty patients (median age 68 years, range 54-83) were enrolled between February 2004 and June 2006, with the last follow up per 1st of August, 2008, 24 months after the last CR was reported. Median follow up time was 20.0 months (4.5-52.3). Clinical CR data and methylation status before treatment has previously been reported (Grövdal *et al*, 2007). Of 24 patients (40%) who achieved CR, one underwent allogeneic stem cell transplantation and was taken off study, and 23 patients (median age 70 years, range 62-76) started maintenance therapy with azacytidine. Ten patients had MDS (RAEB-1 (1) or RAEB-2 (9)), 10 patients had AML, and 3 CMML-2 with >10% blasts. All AML patients had AML with multilineage dysplasia following a myelodysplastic syndrome according to WHO 2001. The median blast count in this group was 36% (range 20-98). RAEB patients fulfilled the criteria for IPSS intermediate-2 or high risk, and the CMML patients had myelodysplastic features with marrow blasts >10%. Twelve patients had a favourable prognostic karyotype (normal or isolated - Y, del(5q) or del(20q)) according to the IPSS, 6 had a poor prognostic

1
2
3 karyotype (≥ 3 aberrations or chromosome 7 abnormalities) and 5 had an
4
5 intermediate karyotype (not fulfilling the criteria for good or poor) (Table I).
6
7

8 *Feasibility and safety of azacytidine maintenance treatment*

9
10
11 In case of grade 3 or 4 cytopenia or severe adverse event after azacytidine, the
12
13 subsequent course was delayed with one week. However, according to protocol, a
14
15 maintained interval between azacytidine courses was prioritized to dose and
16
17 consequently, the protocol was amended when 3 of the first 5 patients treated with
18
19 azacytidine 75 mg/m² developed grade 3 (n=1) or 4 (n=2) neutropenia. The new
20
21 starting dose was 60 mg azacytidine per m² and further dose reductions were
22
23 allowed to avoid severe cytopenias and hospitalization. The median dose of all
24
25 administered azacytidine cycles was 56.3 mg/m²/day. The administered mean dose
26
27 for each patient ranged between 30.0 and 63.3 mg/m². Median time between
28
29 azacytidine courses was 29 days (20-53). The most frequent adverse event was
30
31 grade 3 or 4 neutropenia which was reported at any time point in 43.5% and 30.5%
32
33 patients respectively (Table II). However, only 22% (grade 3) and 8% (grade 4) of the
34
35 total number of given courses were associated with neutropenia of this magnitude.
36
37 Thrombocytopenia grade 3 occurred in 43.5% of the patients and after 9.5% of the
38
39 courses. No grade 4 thrombocytopenia was reported. The majority of observed
40
41 cytopenias preceded a relapse. Interestingly, haemoglobin levels rose during the first
42
43 courses in 16/23 patients. Median haemoglobin level before azacytidine cycle 1 was
44
45 112 g/L (87-135) compared with 131 g/L (78-151) before cycle 4 (P=0.02) (Figure 1).
46
47 Local rash at the injection site was common and was reported for 8 patients (35%).
48
49 All adverse events are shown in Table 2. All but one patient stopped azacytidine
50
51 because of relapse. This patient had a thrombosis in the optic artery and lost vision in
52
53 this eye.
54
55
56
57
58
59
60

CR duration

Median CR duration for the 23 azacytidine treated patients was 13.5 months (2-49+). Four patients (17%), without any obvious unifying characteristics, had a CR lasting for more than 24 months and two patients were still in CR at the last follow up. The study was not powered for subgroup analysis, however, no obvious differences in CR duration or survival were observed according to age or pre-induction diagnosis or cytogenetic subgroup (Figure 2). Pre-treatment platelet count below median was the only factor associated with time to relapse ($P=0.04$). The actual maintenance dose given (above or below the median of 56.3 mg/m^2) did not affect time to relapse. Four out of 5 patients with a karyotype including trisomy 8 reached CR. Interestingly, all 4 had CR durations well above the median for the whole maintenance group (18-30.5 months).

A secondary objective of this study was to evaluate whether promoter methylation of selected genes could predict response to azacytidine. Eight of 9 patients with promoter methylation of any of the analyzed genes became unmethylated in CR. *P15* methylation status prior to induction chemotherapy did not correspond to CR duration ($P=0.82$). Only 2 of 15 patients with pre-treatment *CDH* methylation reached CR and they both had very short CR durations (2.5 and 6 months, respectively). One patient developed *P15* methylation in the bone marrow sampled at 12 months after CR and relapsed shortly after, at 15.5 months. Figure 3 shows methylation status and relapse information for all patients.

Overall survival

Median overall survival (OS) for the 23 patients who received maintenance treatment was 20.0 months (4-52+) (Figure 4). Two year survival was 37.5% and 13.9%, in

1
2
3 patients achieving CR and not achieving CR, respectively. Median OS for the whole
4 cohort (N=60) was 8.2 months (0.1-52.3+). *CDH* was methylated in 15 of 41
5
6
7
8 evaluable patients pre-treatment. Median OS for the 15 patients with pre-treatment
9
10 *CDH* methylation was 4.0 months (0.1-15.7), compared to 9.3 months (0.5-43.5+) for
11
12 patients without *CDH* methylation (P=0.003). *P15* methylation status did not affect
13
14 survival (0.83). In addition a diagnosis of MDS-AML vs. RAEB or CMML, CD34+
15
16 expression and platelet counts below median were associated with shorter survival
17
18 (P=0.04, 0.018 and 0.006 respectively) (Figure 4). There was no significant
19
20 association between IPSS cytogenetic subgroup and survival.
21
22
23
24
25
26
27

28 Discussion

29
30
31 Prolonged therapy with azacytidine was recently shown to significantly improve
32 survival and time to AML transformation in Intermediate-2 and high-risk MDS
33
34 patients, according to a large randomized phase III trial, data that recently led to the
35
36 approval of the drug by EMEA and that are likely to influence the European
37
38 guidelines for treatment of this patient category (Fenaux *et al*, 2009). However, when
39
40 the present study was designed in 2002 primary therapy for high-risk and
41
42 transformed MDS in most parts of Northern Europe was moderate intensity induction
43
44 chemotherapy **or supportive care only**. There is overwhelming evidence that
45
46 disease recurs in the vast majority of patients achieving a complete remission unless
47
48 allogeneic stem cell transplantation is performed. Most patients relapse within the
49
50 first year, and conventional consolidation chemotherapy does not seem to prolong
51
52 CR duration (Hast *et al*, 2003; Ganser *et al*, 2000; Hofmann *et al*, 2007; Wattel *et al*,
53
54 1997; Kantarjian *et al*, 2006). If there is a potential benefit from autologous stem cell
55
56
57
58
59
60

1
2
3 transplantation, this is restricted to younger patients (De Witte *et al*, 1997; Wattel *et*
4
5 *al*, 1999).

6
7
8
9 This trial is the first to evaluate safety and feasibility of maintenance treatment with
10
11 azacytidine for patients with high-risk MDS and MDS-AML with CR after induction
12
13 chemotherapy. The hypothesis was that azacytidine maintenance could prolong time
14
15 to relapse and that the results might constitute a basis for a prospective randomized
16
17 phase III trial.

18
19
20
21 Azacytidine treatment was well tolerated at a starting dose of 60 mg /m² 5/28 days,
22
23 while higher doses, administered within 28 days from complete remission, induced
24
25 high degree of grade 3 or 4 neutropenia. Also at the lower starting dose, the most
26
27 common adverse event was grade 3 neutropenia and/or thrombocytopenia.

28
29
30 Interestingly, azacytidine treatment rarely induced anaemia and in fact more than two
31
32 thirds of the patients experienced an improvement in haemoglobin levels during the
33
34 first months of treatment (Fig 1). As thrombocytopenia and neutropenia was
35
36 common, this may not just reflect bone marrow recovery after induction
37
38 chemotherapy but a positive direct effect of azacytidine on erythropoiesis. Other side
39
40 effects were mild and manageable and only one patient stopped treatment due to
41
42 side effects.
43
44
45
46

47
48 CR duration of 13.5 months and an overall survival of 20.0 months is not clearly
49
50 different from previous studies on induction chemotherapy for patients with high-risk
51
52 MDS or MDS-AML; however the majority of these studies included slightly younger
53
54 patients (Hast *et al*, 2002; Ganser *et al*, 2000; Kantarjian *et al*, 2006; Hofmann *et al*,
55
56 2007; Wattel *et al*, 1997). Studies on older patients with AML by the SWOG and the
57
58 HOVON groups, including both de novo cases and secondary AML have shown
59
60

1
2
3 overall survivals of 9 and 10 months respectively (Anderson *et al*, 2002; van der Holt
4
5
6 *et al*, 2007). Clearly however, azacytidine did not seem to prevent relapses in the
7
8 majority of the cases.

9
10
11 The question that remains to be investigated is whether relapse was delayed in a
12
13 subset of patients. This present study was not powered to analyze subgroups.
14
15 However, we conclude that there were no obvious differences in CR duration or
16
17 overall survival with regard to age, diagnosis or cytogenetic subgroup, i.e.
18
19 parameters that in other studies have appeared as prognostic markers for outcome
20
21 (Ganser *et al*, 2000; Wattel *et al*, 1997; Kantarjian *et al*, 2006). One interesting
22
23 subgroup was patients with a karyotype including trisomy 8. Four out of 5 patients
24
25 with trisomy 8 reached CR and all 4 had CR durations well above the median for the
26
27 whole maintenance group. **This is interesting, since a better response to**
28
29 **azacytidine also previously has been reported among patients with trisomy 8**
30
31 (Raj & Mufti, 2006). **Our findings might support a positive effect of azacytidine**
32
33 **maintenance in this group but could also just reflect a more robust response to**
34
35 **induction chemotherapy. There are previous reports in differences in the**
36
37 **immune response between MDS patients with trisomy 8 and other MDS (Meers**
38
39 ***et al*, 2007; Kawabata *et al*, 2006) and also on immunomodulatory effects of**
40
41 **azacytidine (Sánchez-Abarca *et al*, 2010; Liu *et al*, 2009; Laurenzana *et al*,**
42
43 **2009). Whether immunomodulation, by demethylation or not, may explain the**
44
45 **better overall outcome in this group remains to be studied.** As previously
46
47 reported by us, methylation of *CDH* or of multiple genes was associated with a poor
48
49 response to induction chemotherapy ($P=0.008$) (Grövdal *et al*, 2007). Hence, very
50
51 few patients with any other gene than *P15* methylated actually reached CR and,
52
53 accordingly, most of these patients never started azacytidine maintenance. In the
54
55
56
57
58
59
60

1
2
3 whole study population, *CDH* methylation was related to significantly shorter survival
4
5 (P=0.003). The only two patients with *CDH* methylation subjected to azacytidine
6
7 maintenance relapsed early, after 2.5 and 6 months. This strengthens our previous
8
9 observation that *CDH* methylation is a marker for poor overall prognosis and poor
10
11 response to induction chemotherapy. Interestingly, methylation status of *P15* was not
12
13 correlated to CR duration or survival, which contradicts previous reports that *P15*
14
15 methylation predicts a worse outcome (Aggerholm *et al*, 2006; Christiansen *et al*,
16
17 2003). Whether this reflects a selection bias, i.e. *P15* methylation will not add further
18
19 to the risk profile in a cohort with a high proportion of other high-risk features and
20
21 confirmed AML transformation, or if it may indicate that azacytidine maintenance
22
23 actually counteracted the negative effect of *P15* methylation remains to be
24
25 investigated. At this stage we can only conclude that methylation analysis of any of
26
27 the three selected genes cannot be used to select patients for maintenance
28
29 treatment with azacytidine.
30
31
32
33
34

35
36 Dose reduction of azacytidine was allowed to maintain dose interval and to avoid
37
38 potentially hospitalizing adverse events in this elderly patient group. Hence,
39
40 insufficient azacytidine doses might have influenced the overall results. **However,**
41
42 **patients treated with doses above or below the median dose showed no**
43
44 **differences with regard to any of the measured outcomes.**
45
46
47
48

49
50 In the majority of patients with pre-treatment methylation of any of the three genes,
51
52 achievement of CR was associated with a disappearance of methylation. Together
53
54 with the finding of a development of *P15* methylation preceding relapse in one patient
55
56 this supports a previous report proposing promoter methylation as a marker for
57
58 residual disease (van der Holt *et al*, 2007). It may be of future interest to clarify if this
59
60

1
2
3 is due to demethylation of cells belonging to the clone, or if the methylated clone is
4
5 reduced below detection level by cytostatic treatment.
6
7

8
9 This study is the first to evaluate azacytidine as maintenance treatment after
10
11 successful induction chemotherapy in high-risk and transformed MDS. We show that
12
13 treatment is very well tolerated, with manageable neutropenia and thrombocytopenia,
14
15 almost no inhibiting effect on erythropoiesis, and few other side effects. Although no
16
17 overall positive effect on CR duration, the main efficacy criterion, was observed,
18
19 certain subgroups of patients, such as those with trisomy 8, may be subject for
20
21 further investigation. The strong negative effect of hypermethylation on outcome of
22
23 chemotherapy is a finding that needs to be addressed in high-risk MDS, in particular
24
25
26
27
28 in patients planned for allogeneic SCT.
29
30
31
32
33
34
35
36
37
38
39
40
41
42
43
44
45
46
47
48
49
50
51
52
53
54
55
56
57
58
59
60

References

- 1
2
3
4
5
6 Aggerholm, A., Holm, M.S., Guldborg, P., Olesen, L.H. & Hokland P. (2006)
7 Promoter hypermethylation of P15ink4b, HIC1, CDH1 and ER is frequent in
8 myelodysplastic syndrome and predicts poor prognosis in early stage patients.
9
10
11
12
13 *European Journal of Haematology*, **76**, 23-32.
- 14
15
16
17 Agrawal, S., Unterberg, M., Koschmieder, S., zur Stadt, U., Brunnberg, U., Verbeek,
18 W., Büchner, T., Berdel, W.E., Serve, H., Müller-Tidow, C. (2007) DNA methylation of
19 tumor suppressor genes in clinical remission predicts relapse risk in acute myeloid
20 leukemia. *Cancer Research*, **67**, 1370-1377.
- 21
22
23
24
25
26
27 Anderson, J.E., Kopecky, K.J., Willman, C.L., Head, D., O'Donnell, M.R., Luthardt,
28 F.W., Norwood, T.H., Chen, I.M., Balcerzak, S.P., Johnson, D.B. & Appelbaum, F.R.
29 (2002) Outcome after induction chemotherapy for older patients with acute myeloid
30 leukemia is not improved with mitoxantrone and etoposide compared to cytarabine
31 and daunorubicin: a Southwest Oncology Group study. *Blood*, **12**, 3869-3876.
- 32
33
34
35
36
37
38
39 Berg, T., Guo, Y., Abdelkarim, M., Fliegau, M. & Lübbert, M. (2007) Reversal of
40 p15/INK4b hypermethylation in AML1/ETO-positive and -negative myeloid leukemia
41 cell lines. *Leukemia Research*, **31**, 497-506.
- 42
43
44
45
46
47
48
49
50
51
52
53
54
55
56
57
58
59
60
Christiansen, D.H., Andersen, M.K. & Pedersen-Bjergaard, J. (2003) Methylation of
p15ink4b is common, is associated with deletion of genes on chromosome arm 7q
and predicts a poor prognosis in therapy-related myelodysplasia and acute myeloid
leukemia. *Leukemia*, **17**, 1813-1819.

1
2
3 Cremonesi, L., Firpo, S., Ferrari, M., Righetti, P.G. & Gelfi, C. (1997) Double-gradient
4
5 DGGE for optimized detection of DNA point mutations. *Biotechniques*, **22**, 326-330.
6
7

8
9 Daskalakis, M., Nguyen, T.T., Nguyen, C., Guldborg, P., Köhler, G., Wijermans, P.,
10
11 Jones, P.A. & Lübbert, M. (2002) Demethylation of a hypermethylated p15/INK4b
12
13 gene in patients with myelodysplastic syndrome by 5-aza-2'-deoxycytidine
14
15 (decitabine) treatment. *Blood*, **100**, 2957-2964.
16
17

18
19 De Witte, T., Van Biezen, A., Hermans, J., Labopin, M., Runde, V., Or, R., Meloni, G.,
20
21 Mauri, S.B., Carella, A., Apperley, J., Gratwohl, A. & Laporte, J.P. (1997) Autologous
22
23 bone marrow transplantation for patients with myelodysplastic syndrome (MDS) or
24
25 acute myeloid leukemia following MDS. *Blood*, **90**, 3853-3857.
26
27

28
29 Esteller M. (2008) Epigenetics in cancer. *New England Journal of Medicine*, **358**,
30
31 1148-1159.
32
33

34
35 Fenaux, P., Mufti, G.J., Hellström-Lindberg, E., Santini, V., Finelli, C., Giagounidis,
36
37 A., Schoch, R., Gattermann, N., Sanz, G., List, A., Gore, S.D., Seymour, J.F.,
38
39 Bennett, J.M., Byrd, J., Backstrom, J., Zimmerman, L., McKenzie, D., Beach, C. &
40
41 Silverman, L.R. (2009) Efficacy of azacytidine compared with that of conventional
42
43 care regimens in the treatment of higher-risk myelodysplastic syndromes: a
44
45 randomized, open-label phase III study. *Lancet Oncology*, **3**. 223-232.
46
47
48

49
50 Ganser, A., Heil, G., Seipelt, G., Hofmann, W., Fischer, J.T., Langer, W., Brockhaus,
51
52 W., Ittel, T.H., Brack, N., Fuhr, H.G., Knuth, P., Höffken, K., Bergmann, L. & Hoelzer,
53
54 D. (2000) Intensive chemotherapy with idarubicine, ara-C, etoposide and m-AMSA
55
56 followed by immunotherapy with interleukin-2 for myelodysplastic syndromes and
57
58 high-risk acute myeloid leukemia (AML). *Annals of Hematology*, **79**, 30-35.
59
60

1
2
3 Geli, J., Kiss, N., Karimi, M., Lee, J., Bäckdahl, M., Ekström, T.J. & Larsson, C.

4
5 (2008) Global and regional CpG methylation in pheochromocytomas and abdominal
6
7 paragangliomas: Association to malignant behavior. *Clinical Cancer Research*, **9**,
8
9 2551-2559.

10
11
12
13 Greenberg, P., Cox, C., LeBeau, M.M., Fenaux, P., Morel, P., Sanz, G., Sanz, M.,
14
15 Vallespi, T., Hamblin, T., Oscier, D., Ohyashiki, K., Toyama, K., Aul, C., Mufti, G. &
16
17 Bennet, J. (1997) International scoring system for evaluating the prognosis in
18
19 myelodysplastic syndromes. *Blood*, **89**, 2079-2088.

20
21
22
23 Grønbaek, K., Treppendahl, M., Asmar, F. & Guldberg, P. (2008) Epigenetic changes
24
25 in cancer as potential targets for profylaxis and maintenance therapy. *Basic & Clinical*
26
27 *Pharmacology and Toxicology*, **103**, 389-396.

28
29
30
31 Grövdal, M., Khan, R., Aggerholm, A., Antunovic, P., Astermark, J., Bernell, P.,
32
33 Engström, L.M., Kjeldsen, L., Linder, O., Nilsson, L., Olsson, A., Wallvik, J., Tangen,
34
35 J.M., Öberg, G., Jacobsen, L.E., Hokland, P., Porwit, A. & Hellström-Lindberg, E.
36
37 (2007) Negative effect of DNA hypermethylation on the outcome of intensive
38
39 chemotherapy in older patients with high-risk myelodysplastic syndromes and acute
40
41 myeloid leukemia following myelodysplastic syndrome. *Clinical Cancer Research*, **13**,
42
43 7107-7112.

44
45
46
47
48
49 Guo, Y., Engelhardt, M., Wider, D., Abdelkarim, M. & Lübbert, M. (2006) Effects of 5-
50
51 aza-2'-deoxycytidine on proliferation, differentiation and p15/INK4b regulation of
52
53 human hematopoietic progenitor cells. *Leukemia*, **20**, 115-121.

1
2
3 Hast, R., Hellström-Lindberg, E., Ohm, L., Björkholm, M., Celsing, F., Dahl, I.M.,
4
5 Dybedal, I., Gahrton, G., Lindberg, G., Lerner, R., Linder, O., Löfvenberg, E., Nilsson-
6
7 Ehle, H., Paul, C., Samuelsson, J., Tangen, J.M., Tidefelt, U., Turesson, I., Wahlin,
8
9 A., Winqvist, I., Öberg, G. & Bernell, P. (2003) No benefit from adding GM-CSF to
10
11 induction chemotherapy regimens in transforming myelodysplastic syndromes: better
12
13 outcome in patients with less proliferative disease. *Leukemia*, **17**, 1827-1833.
14
15

16
17
18 Hofmann, W.K., Heil, G., Zander, C., Wiebe, S., Ottmann, O.G., Bergmann, L.,
19
20 Hoeffken, K., Fischer, J.T., Knuth, A., Kolbe, K., Schmoll, H.J., Langer, W.,
21
22 Westerhausen, M., Koebel, C.B., Hoelzer, D. & Ganser, A. (2007) Intensive
23
24 chemotherapy with idarubicine, cytarabine, etoposide and G-CSF priming in patients
25
26 with advanced myelodysplastic syndrome and high-risk acute myeloid leukemia.
27
28 *Annals of Hematology*, **83**, 498-503.
29
30

31
32
33 Jaffe, E.S., Harris, N.L., Stein, H. & Vardiman, J.W., editors. (2001) World Health
34
35 Organization classification of tumours. Pathology and genetics of tumours of
36
37 haematopoietic and lymphoid tissues. Lyon, IARC Press.
38
39

40
41 Jädersten, M., Montgomery, S.M., Dybedal, I., Porwit-MacDonald, A. & Hellström-
42
43 Lindberg, E. (2005) Long-term outcome of treatment of anemia in MDS with
44
45 erythropoietin and G-CSF. *Blood*, **106**, 803-811.
46
47

48
49 Kantarjian, H., Beran, M., Cortes, J., O'Brien, S., Giles, F., Pierce, S., Shan, J.,
50
51 Plunkett, W., Keating, M. & Estey, E. (2006) Long-term follow-up results of the
52
53 combination of topotecan and cytarabine and other intensive chemotherapy regimens
54
55 in myelodysplastic syndrome. *Cancer*, **106**, 1099-1109.
56
57
58
59
60

1
2
3 Kantarjian, H., O'Brien, S., Cortes, J., Giles, F., Faderl, S., Jabbour, E., Garcia-
4 Manero, G., Wierda, W., Pierce, S., Shan, J. & Estey, E. (2006) Results of intensive
5 chemotherapy in 998 patients age 65 years or older with acute myeloid leukemia or
6 high-risk myelodysplastic syndrome. *Cancer*, **106**, 1090-1098.
7
8
9

10
11
12
13 Kawabata, H., Sawaki, T., Kawanami, T., Shomovama, K., Karasawa, H.,
14 Fukushima, T., Masaki, Y., Ogawa, N., Hirose, Y., Ozaki K., Shimanaka, K., Takase
15 S., Ueno, H. & Umehara, H. (2006) Myelodysplastic syndrome with inflammatory
16 intestinal ulcers: significance of trisomy 8. *Internal Medicine*, **45**, 1309-1314.
17
18
19
20

21
22
23
24 Khan, R., Schmidt-Mende, J., Karimi, M., Gogvadze, V., Hassan, M., Ekström T.J.,
25 Zhivotovsky, B. & Hellström-Lindberg, E. (2008) Hypomethylation and apoptosis in 5-
26 azacytidine-treated myeloid cells. *Experimental Hematology*, **36**, 149-157.
27
28
29
30

31
32
33 **Liu, Y., Kuick, R., Hanash, S. & Richardson, B. (2009) DNA methylation**
34 **inhibition increases T cell KIR expression through effects on both promoter**
35 **methylation and transcription factors. *Clinical Immunology*, **130**, 213-224.**
36
37
38
39

40
41 **Laurenzana, A., Petruccelli, L.A., Pettersson, F., Figueroa, M.E., Melnick, A.,**
42 **Baldwin, A.S., Paoletti, F. & Miller, W.H. Jr. (2009) Inhibition of DNA**
43 **methyltransferase activates tumor necrosis factor alpha-induced monocytic**
44 **differentiation in acute myeloid leukemia cells. *Cancer Research*, **69**, 55-64.**
45
46
47
48

49
50
51 **Lübbert, M., Wijermans, P., Kunzmann, R., Verhoef, G., Bosly, A., Ravoet, C.,**
52 **Andre, M & Ferrant, A. (2001). Cytogenetic responses in high-risk**
53 **myelodysplastic syndrome following low-dose treatment with the DNA-**
54 **methylation inhibitor 5-aza-2'-deoxycytidine. *British Journal of Haematology*,**
55 **114, 349-357.**
56
57
58
59
60

1
2
3 **Meers, S., Kasran, A., Boon, L., Lemmens, J., Ravoet, C., Boogaerts M.,**
4
5 **Verhoef, G., Verfaillie, C. & Delforge, M. (2007) Monocytes are activated in**
6
7 **patients with myelodysplastic syndromes and can contribute to bone marrow**
8
9 **failure through CD40-CD40L interactions with T helper cells. *Leukemia*, **21,****
10
11 **2411-2419.**

12
13
14
15
16 Nilsson, L., Åstrand-Grundström, I., Andersson, K., Arvidsson, I., Hokland, P., Bryder,
17
18 D., Kjeldsen, L., Johansson, B., Hellström-Lindberg, E., Hast, R. & Jacobsen, L.E.,
19
20 (2002) Involvement and functional impairment of the CD34+ CD38- hematopoietic
21
22 stem cell pool in myelodysplastic syndromes with trisomy 8. *Blood*, **100**, 259-267.
23
24

25
26
27 O'Dwyer, K & Maslak, P. (2008) Azacitidine and the beginnings of therapeutic
28
29 epigenetic modulation. *Expert Opinion on Pharmacotherapy*, **9**, 1981-1986.
30

31
32 Raj, K. & Mufti, G.J. (2006) Azacytidine (Vidaza®) in the treatment of myelodysplastic
33
34 syndromes. *Therapeutics and Clinical Risk Management*, **2**, 377-388.
35

36
37
38 **Sánchez-Abarca, L.I., Gutierrez-Cosio, S., Santamaría, C., Caballero-Velazquez,**
39
40 **T., Blanco, B., Herrero-Sánchez, C., García, J.L., Carrancio, S., Hernández-**
41
42 **Campo, P., González, F.J., Flores, T., Ciudad, L., Ballestar, E., Del Cañizo, C.,**
43
44 **San Miguel, J.F. & Pérez-Simon, J.A. (2010) Immunomodulatory effect of 5-**
45
46 **azacytidine (5-azaC): potential role in the transplantation setting. *Blood*, **115,****
47
48 **107-121.**

49
50
51
52
53 Schmeltz, K., Sattler, N., Wagner, M., Lübbert, M., Dörken, B. & Tamm, I. (2005)
54
55 Induction of gene expression by 5-aza-2'-deoxycytidine in acute myeloid leukemia
56
57 (AML) and myelodysplastic syndrome (MDS) by not epithelial cells by DNA-
58
59 methylation-dependent and -independent mechanisms. *Leukemia*, **19**, 103-111.
60

1
2
3 Silverman, L.R., Demakos, E.P., Peterson, B.L., Kornblith, A.B., Holland, J.C.,
4
5 Odchimar-Reissig, R., Stone, R.M., Nelson, D., Powell, B.L., De Castro, C.M.,
6
7 Ellerton, J., Larson, R.A., Schiffer, C.A. & Holland, J.F. (2002) Randomized controlled
8
9 trial of azacitidine in patients with the myelodysplastic syndrome: a study of the
10
11 cancer and leukemia group B. *Journal of Clinical Oncology*, **20**, 2429-2440.
12
13

14
15
16 Singal R & Ginder GD. (1999) DNA methylation. *Blood*, **93**, 4059-4070.
17

18
19 Tien, H.F., Tang, J.L., Tsay, W., Liu, M.C., Lee, F.Y., Wang, C.H., Chen, Y.C. &
20
21 Shen, M.C. (2001) Methylation of the p15ink4b gene in myelodysplastic syndrome: it
22
23 can be detected early at diagnosis or during progression and is highly associated
24
25 with leukaemic transformation. *British Journal of Haematology*, **112**, 148-154.
26
27

28
29 Tost, J. & Gut, I.G. (2007) DNA methylation analysis by pyrosequencing. *Nature*
30
31 *Protocols*, **9**, 2265-2275.
32
33

34
35 van der Holt, B., Breems, D.A., Berna Beverloo, H., van den Berg, E., Burnett, A.K.,
36
37 Sonneveld, P. & Löwenberg, B. (2007) Various distinctive cytogenetic abnormalities
38
39 in patients with acute myeloid leukemia aged 60 years and older express adverse
40
41 prognostic value: results from a prospective clinical trial. *British Journal of*
42
43 *Haematology*, **1**, 96-105
44
45

46
47 Wattel, E., De Botton, S., Laï, J.L., Preudhomme C., Lepelley P, Bauters, F. &
48
49 Fenaux, P. (1997) Long-term follow-up of de novo myelodysplastic syndromes
50
51 treated with intensive chemotherapy: incidence of long-term survivors and outcome
52
53 of partial responders. *British Journal of Haematology*, **98**, 983-991.
54
55
56
57
58
59
60

1
2
3 Wattel, E., Solary, E., Leleu, X., Dreyfus, F., Brion, A., Jouet, J.P., Hoang-Ngoc, L.,
4
5 Maloisel, F., Guerci, A., Rochant, H., Gratecos, N., Casassus, P., Janvier, M., Brice,
6
7 P., Lepelley, P. & Fenaux, P. (1999) A prospective study of autologous bone marrow
8
9 or peripheral blood stem cell transplantation after intensive chemotherapy in
10
11 myelodysplastic syndromes. *Leukemia*, **13**, 524-529.
12
13

14
15
16 Zeschnigk, M., Lich, C., Buiting, K., Doerfler, W. & Horsthemke, B. (1997) A single-
17
18 tube PCR-test for the diagnosis of Angelman and Prader-Willi syndrome based on
19
20 allelic methylation differences at the SNRPN locus. *European Journal of Human*
21
22 *Genetics*, **5**, 94-98.
23
24
25
26
27
28
29
30
31
32
33
34
35
36
37
38
39
40
41
42
43
44
45
46
47
48
49
50
51
52
53
54
55
56
57
58
59
60

Legends to figures

Figure 1. Peripheral blood counts during first 6 courses of azacytidine. Samples were taken immediately prior to the start of azacytidine. (A),(C),(E) Each line represents one patient during 6 cycles or until relapse. (B),(D),(E) Box plots. Boxes show median values and 25-75 percentile, whiskers represent max and min values, circles represent outliers (values between 1.5 and 3 box lengths from either end of the box) and asterisks represent extremes (values more than 3 box lengths from either end of the box). (A),(B) Haemoglobin (g/L) (C),(D) Platelets ($10^9/L$) (E),(F) Neutrophils ($10^9/L$)

Figure 2. CR duration. (A) All 23 patients on azacytidine maintenance (B) MDS-AML vs. RAEB and CMML (C) Cytogenetics IPSS Good vs. Intermediate and Poor (D) Platelet counts above median vs. below median at study start (E) **P15 (CDKN2B)** methylated vs. unmethylated at study start (F) Patients given doses of azacytidine above vs. below the mean dose

Figure 3. Methylation status. Methylation status for each of the 23 patients receiving azacytidine maintenance at the time points when bone marrow was sampled (study start, CR and 6, 12 and 24 months after CR) Patients with karyotype including trisomy 8 are marked with an asterisk.

Figure 4. Overall survival. (A) Overall survival for all 60 patients enrolled (B) MDS-AML vs. RAEB and CMML (C) Bone marrow CD34+ above vs. below the median level (D) Platelets at study start above vs. below the median (E) **P15 (CDKN2B)** methylated vs. unmethylated at study start (F) CDH methylated vs. unmethylated at study start

Table I. Pre-induction characteristics of 23 patients receiving maintenance therapy with azacytidine

Values at start of study	N=23 (%)	Mean (SD)
Sex		
Male	12 (52)	
Female	11 (48)	
Age		70 (62-76) ¹
Diagnosis WHO		
MDS	10 (43.5)	
MDS-AML	10 (43.5)	
CMML	3 (13)	
Cytogenetic risk group IPSS ²		
Good	12 (52)	
Intermediate	5 (22)	
Poor	6 (26)	
Haemoglobin (g/L)		97 (10.1)
WBC (10 ⁹ /L)		6.5 (14.4)
Platelets (10 ⁹ /L)		121 (96.9)
S-LDH (μkat/L)		5.8 (5.5)
Bone marrow cellularity (%)		75 (21.4)
Bone marrow blasts (%)		26 (24.2)
Methylated <i>P15 (CDKN2B)</i>	9/19 (47.4)	
Methylated <i>CDH</i>	2/16 (12.5)	
Methylated <i>HIC</i>	2/16 (12.5)	

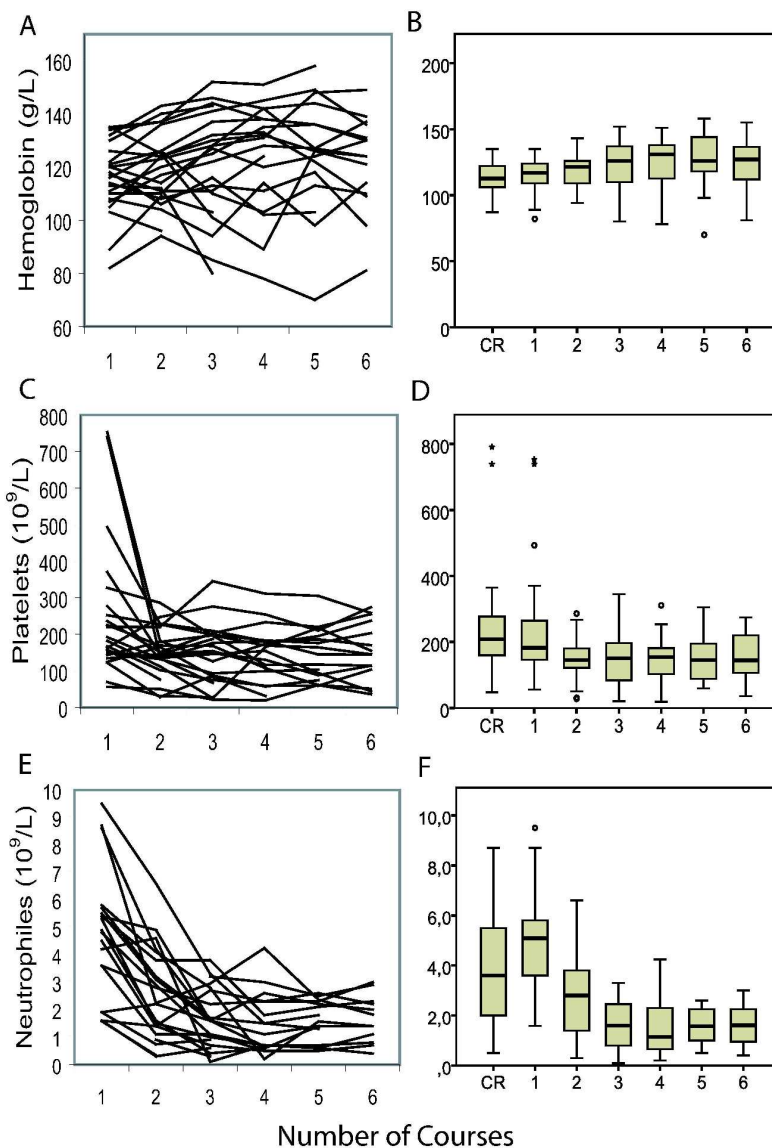
¹median and range ²International Prognostic Scoring System (Good: Normal, del(5)q, del(20)q Poor: Complex (≥3 abnormalities) or chromosome 7 abnormalities Intermediate: Not fulfilling criteria for good or poor

Table II. Adverse events

	Patients N=23 (%)	Courses N=281 (%)
Rash at injection site	8 (35)	
Myelosuppression [†]		
Thrombocytopenia		
Grade 0-1	9 (39)	223 (79.5)
Grade 2	4 (17.5)	31 (11)
Grade 3	10 (43.5)	27 (9.5)
Grade 4	0 (0)	0 (0)
Neutropenia		
Grade 0-1	3 (13)	124 (44.5)
Grade 2	3 (13)	72 (25.5)
Grade 3	10 (43.5)	61 (22)
Grade 4	7 (30.5)	23 (8)
Infectious disease	5 (22)	
Fatigue	3 (13)	
Muscle pain	3 (13)	
Nausea	2 (9)	
Thrombosis in optic artery	1 (4)	

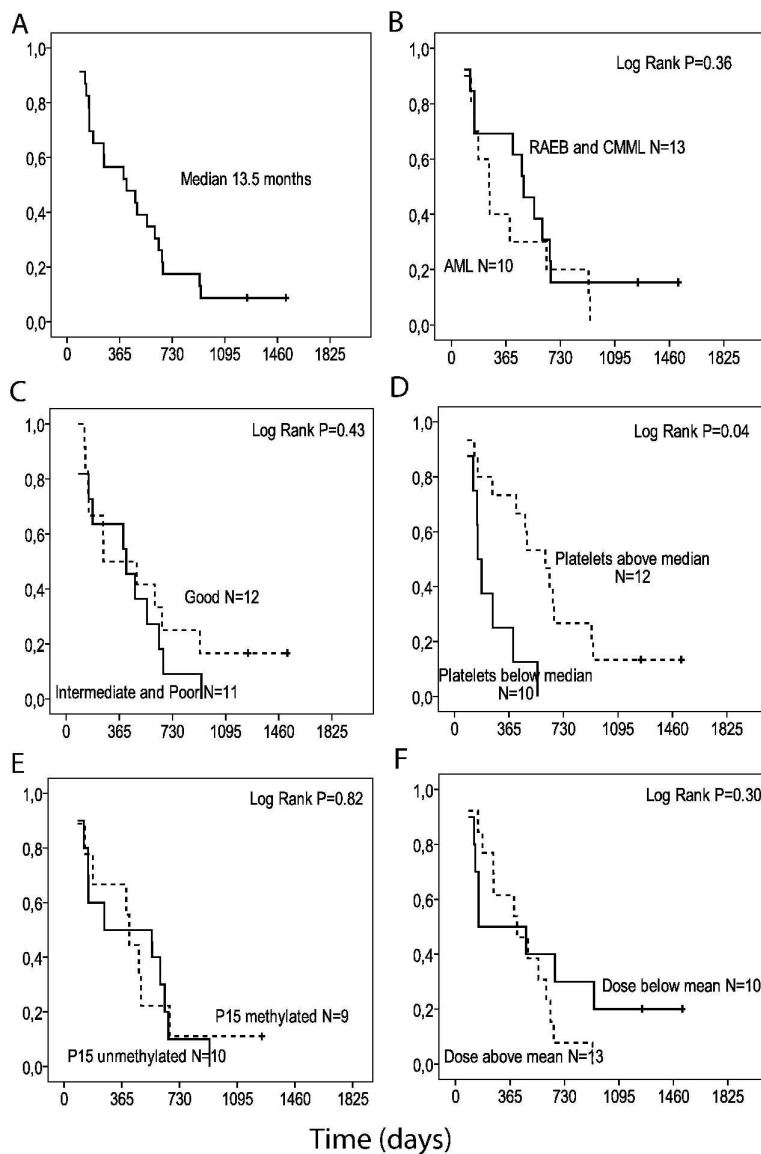
[†]According to the NCI common toxicity criteria 2.0

Figure 1



Peripheral blood counts during first 6 courses of azacytidine. Samples were taken immediately prior to the start of azacytidine. (A),(C),(E) Each line represents one patient during 6 cycles or until relapse. (B),(D),(E) Box plots. Boxes show median values and 25-75 percentile, whiskers represent max and min values, circles represent outliers (values between 1.5 and 3 box lengths from either end of the box) and asterisks represent extremes (values more than 3 box lengths from either end of the box). (A),(B) Haemoglobin (g/L) (C),(D) Platelets ($10^9/L$) (E),(F) Neutrophils ($10^9/L$)
113x170mm (600 x 600 DPI)

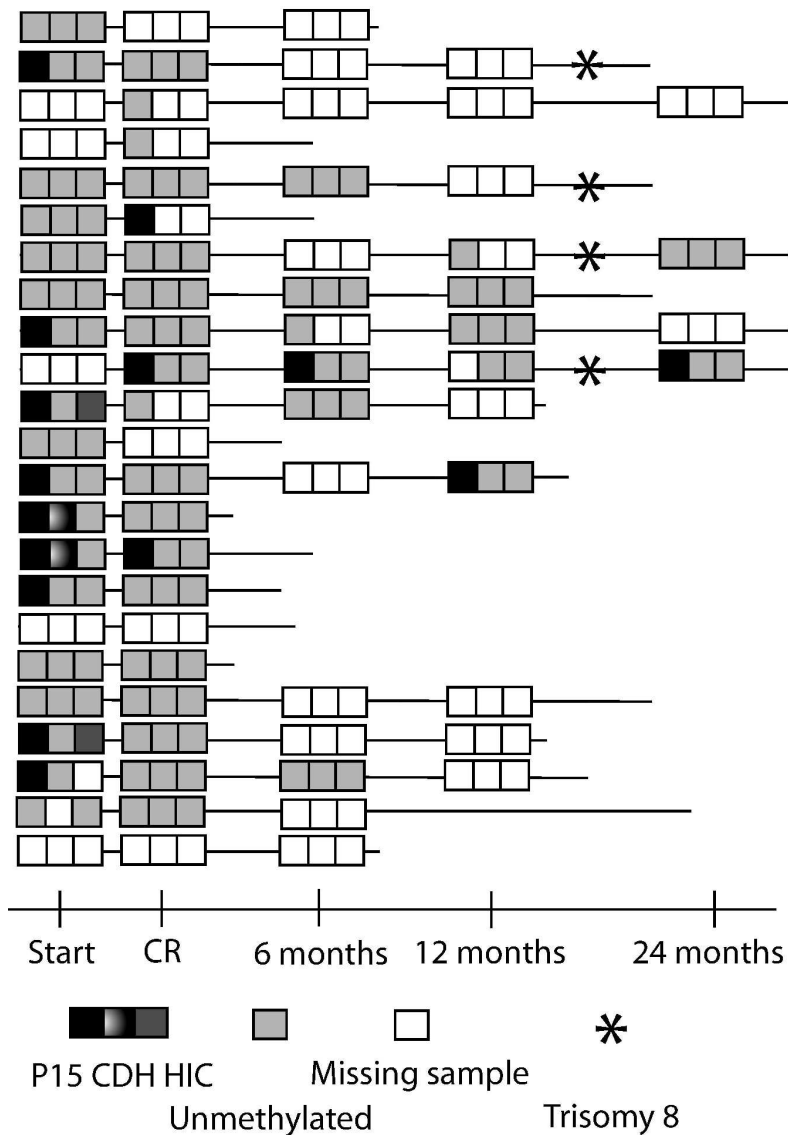
Figure 2



CR duration. (A) All 23 patients on azacytidine maintenance (B) MDS-AML vs. RAEB and CMML (C) Cytogenetics IPSS Good vs. Intermediate and Poor (D) Platelet counts above median vs. below median at study start (E) P15 (CDKN2B) methylated vs. unmethylated at study start (F) Patients given doses of azacytidine above vs. below the mean dose
109x169mm (600 x 600 DPI)

1
2
3
4
5
6
7
8
9
10
11
12
13
14
15
16
17
18
19
20
21
22
23
24
25
26
27
28
29
30
31
32
33
34
35
36
37
38
39
40
41
42
43
44
45
46
47
48
49
50
51
52
53
54
55
56
57
58
59
60

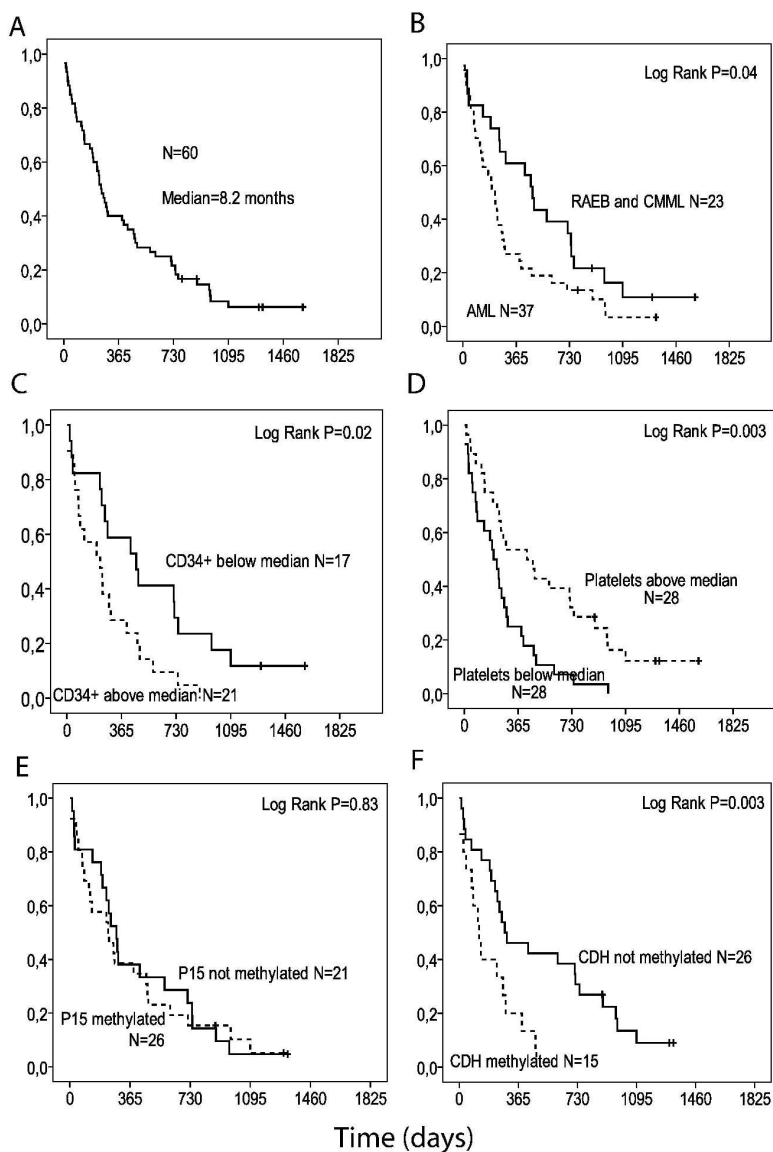
Figure 3



Methylation status. Methylation status for each of the 23 patients receiving azacytidine maintenance at the time points when bone marrow was sampled (study start, CR and 6, 12 and 24 months after CR) Patients with karyotype including trisomy 8 are marked with an asterisk.

126x173mm (600 x 600 DPI)

Figure 4



Overall survival. (A) Overall survival for all 60 patients enrolled (B) MDS-AML vs. RAEB and CMML (C) Bone marrow CD34+ above vs. below the median level (D) Platelets at study start above vs. below the median (E) P15 (CDKN2B) methylated vs. unmethylated at study start (F) CDH methylated vs. unmethylated at study start
112x172mm (600 x 600 DPI)