



HAL
open science

INFLUENCE OF CITALOPRAM ON INTERDIGESTIVE GASTROINTESTINAL MOTILITY IN MAN.

Pieter Janssen, Rita Vos, Jan Tack

► **To cite this version:**

Pieter Janssen, Rita Vos, Jan Tack. INFLUENCE OF CITALOPRAM ON INTERDIGESTIVE GASTROINTESTINAL MOTILITY IN MAN.. *Alimentary Pharmacology and Therapeutics*, 2010, 32 (2), pp.289. 10.1111/j.1365-2036.2010.04351.x . hal-00552571

HAL Id: hal-00552571

<https://hal.science/hal-00552571>

Submitted on 6 Jan 2011

HAL is a multi-disciplinary open access archive for the deposit and dissemination of scientific research documents, whether they are published or not. The documents may come from teaching and research institutions in France or abroad, or from public or private research centers.

L'archive ouverte pluridisciplinaire **HAL**, est destinée au dépôt et à la diffusion de documents scientifiques de niveau recherche, publiés ou non, émanant des établissements d'enseignement et de recherche français ou étrangers, des laboratoires publics ou privés.

**INFLUENCE OF CITALOPRAM ON INTERDIGESTIVE
GASTROINTESTINAL MOTILITY IN MAN.**

Journal:	<i>Alimentary Pharmacology & Therapeutics</i>
Manuscript ID:	APT-0284-2010.R1
Manuscript Type:	Original Scientific Paper
Date Submitted by the Author:	03-May-2010
Complete List of Authors:	Janssen, Pieter; University of Leuven, Pathophysiology Vos, Rita; University of Leuven, Pathophysiology Tack, Jan; University Hospital, Center for Gastroenterological Research
Keywords:	Stomach and duodenum < Organ-based, Motility < Topics, Small intestine < Organ-based, X keyword = no topic , Y keyword = no topic

Review

1
2
3 **INFLUENCE OF CITALOPRAM ON INTERDIGESTIVE GASTROINTESTINAL**
4 **MOTILITY IN MAN.**
5
6
7

8 Janssen, P., Vos, R., Tack J.
9

10 Running head: Citalopram and interdigestive motility
11
12

13
14 Correspondence: Jan Tack, M.D., Ph.D.
15 Center for Gastroenterological Research
16 Catholic University Leuven
17 B-3000 Leuven, Belgium
18 Tel. +32 16 34 57 61
19 Fax. +32 16 34 59.39
20 E-mail: jan.tack@med.kuleuven.ac.be
21
22
23
24
25
26
27
28
29
30
31
32
33
34
35
36
37
38
39
40
41
42
43
44
45
46
47
48
49
50
51
52
53
54
55
56
57
58
59
60

Peer Review

ABSTRACT

Administration of 5-Hydroxytryptamine (5HT), and selective 5HT receptor ligands modify interdigestive motility in animals and in man. **Aim:** To study the effect of citalopram, a selective 5-HT reuptake inhibitor, on interdigestive motility in man.

Methods: In 20 healthy subjects, antroduodenojejunal motor activity was studied manometrically. Basal interdigestive motor activity was recorded until the passage of two activity fronts. Ten minutes after the second activity front, placebo or 20 mg of citalopram were administered intravenously in a double-blind randomized fashion. Recording continued until the passage of two more activity fronts had occurred. **Results:** Administration of citalopram induced a premature small intestinal phase 3 after 35 ± 6.4 min, compared to 120 ± 17 min after placebo $p < 0.01$. Citalopram shortened MMC cycle length at the expense of phase 1 and phase 2 and significantly increased the motility index during phase 2 in the antrum and the small intestine. **Conclusions:** In the interdigestive state in man, intravenous administration of the selective 5-HT reuptake inhibitor citalopram induces a premature intestinal phase 3 and suppresses gastric activity fronts. Phase 2 motility is stimulated both in the stomach and in the small bowel after citalopram. These data suggest 5HT is involved in the control of interdigestive motility.

INTRODUCTION

The interdigestive state of the gastrointestinal tract in most mammalian species, including man, is characterized by the presence of a cyclical pattern of activity, called migrating motor complex (MMC) (1,2). The MMC is programmed by the enteric nervous system, but the oscillatory mechanism controlling its cyclical nature is poorly understood (3).

Serotonin or 5-Hydroxytryptamine (5HT) is a major neurotransmitter both in the brain and in the gastrointestinal tract, where it plays a key role in the regulation of sensory and motor functions (4). Evidence has accumulated that administration of 5HT, its precursor 5-hydroxytryptophane, and its selective 5HT receptor agonists and antagonists can modify interdigestive motility in animals and in man (5-13). However, the effect of 5HT on the MMC has not been studied directly in man, as the intravenous administration of 5-HT is associated with tachyphylaxis and cardiovascular and pulmonary adverse effects (14). After its release, 5HT is inactivated by the serotonin reuptake transporter (SERT)-mediated uptake (4). The administration of a selective 5HT reuptake inhibitor has been proposed as an alternative approach to studying role of 5HT in the control of gastrointestinal motor function (4, 15-17). Selective serotonin reuptake inhibitors (SSRIs) act both centrally and peripherally to enhance the availability of physiologically released 5HT (18,19). During short term treatment, SSRIs enhance 5HT-mediated actions by prolonging the availability of physiologically released 5HT (17). In the treatment of depression and anxiety however, only long term treatment with citalopram lead to clinical improvement (20, 21), indicating that short and long term treatment have a different mechanism of action. A possible explanation is that long term treatment with citalopram leads to desensitisation, especially of 5HT inhibitory auto-receptors (20, 22).

One study reported a reduced periodicity of the MMC in the small bowel of healthy volunteers after 5 days pretreatment with the SSRI paroxetine (15).

1
2
3 However, it is unclear whether this reflects enhanced availability of 5HT or
4 whether auto-receptor desensitization is already involved. Moreover, there is
5 evidence for differential involvement of 5HT in the control of gastric or small
6 bowel interdigestive motility. It has previously been shown that gastric, but not
7 small intestinal phase 3, is inhibited by the 5HT₃ receptor antagonist ondansetron
8 (10), and that administration of the 5HT₁ receptor agonist sumatriptan induces a
9 premature intestinal phase 3, while suppressing gastric phase 3 activity (9). So
10 far, the influence of SSRIs on gastric interdigestive motility has not been studied
11 in man.
12
13
14
15
16
17
18
19

20
21 The present study was undertaken to investigate the effects of acute inhibition of
22 5HT reuptake on interdigestive gastroduodenojejunal manometry in man. As
23 longer-term use of SSRIs leads to receptor desensitisation, we focused on the
24 effects of acute intravenous administration of citalopram, a selective SSRI which
25 is used in the treatment of depression. Upon intravenous infusion peak plasma
26 levels of citalopram are reached after 30 minutes and stable concentrations are
27 maintained for at least 2 hours (23).
28
29
30
31
32
33
34
35
36
37
38
39
40
41
42
43
44
45
46
47
48
49
50
51
52
53
54
55
56
57
58
59
60

MATERIAL AND METHODS

Study subjects

Twenty healthy volunteers (16 men; mean age: 24.9 ± 1.0 years) participated in the study. None of the subjects had symptoms or a history of gastrointestinal disease or drug allergies, and none were taking any medication. Informed consent was obtained from each participant. The protocol was approved by the Ethics Committee of the University Hospital.

Recording technique

Recordings of antroduodenojejunal intraluminal pressures were performed using an eight lumen polyvinyl catheter (outer diameter 6 mm) with a latex bag at its end that could be filled with mercury. The probe was introduced via the mouth and positioned under fluoroscopic control in such a way that the most distal of the three proximal sensors, which were 3 cm apart, was located in the antrum at the level of pylorus or just distal to it. The three other sensors were located in the horizontal part of the duodenum and in the proximal jejunum, respectively at 17, 42, and 67 cm distal to the antropyloric recording sites. The two remaining catheters were used for filling and emptying the mercury bag. This catheter assembly allowed at least one recording orifice to be kept in the distal antrum during the entire experiment and thus the migrating motor complex was adequately monitored simultaneously in the distal antrum, the duodenum, and the upper jejunum. The recording catheters were continuously perfused with water by means of a low compliance pneumohydraulic infusion pump (Arndorfer Medical Specialties Inc., Greendale, Wisconsin, USA) at a flow rate of 0.4 ml/min, and were connected to external pressure transducers (Siemens Elema 746, Siemens, Iselin, New Jersey, USA). Pressures were recorded on a polygraph (Elema Mingograph 82, Siemens) using a paper speed of 5 mm/s.

Study design

Following an overnight fast of at least 12 hours, the recording probe was introduced as described above and secured to the subject's chin with adhesive tape. In all volunteers, gastrointestinal motility was recorded until the passage of two phases 3 of the MMC (either gastric or intestinal). Ten minutes after the second phase 3 passed at the most distal recording site, 20 mg of citalopram (Cipramil, Lundbeck, Belgium) or saline was administered intravenously over 20 minutes in a double-blind randomized controlled fashion. Motility was recorded until two consecutive phases 3 of the MMC had occurred after the administration of citalopram, or for up to two hours after the end of the infusion.

Study analysis

Analysis of the recordings of gastroduodenojejunal motor activity was performed by two of the authors independently. Visual inspection allowed continuous identification of the most distal antral recording site as the catheter that recorded up to three pressure waves per minute (antral waves) just proximal to the catheter that recorded up to 12 waves per minute (duodenal waves) or to the catheter that exhibited a mixture of antral and duodenal waves. The different phases of the migrating motor complex were identified as described previously (2,9,10). Whenever possible, the propagation velocity of phase 3 was assessed from the gastric to the duodenal sensor and from the first to the second jejunal sensor.

Comparisons were made for MMC characteristics after saline or citalopram. In addition, MMC characteristics before and after administration of saline or citalopram, where each subject served as his/her own control, were also compared. The Student's t test was used to determine significant difference between cycle lengths, duration of the different phases of the MMC, velocity of propagation of phase 3 and motility indices during phase 2. The Chi square test

1
2
3 was used to compare the proportion of phase 3s of MMC starting in the stomach.
4
5 All values are presented as median (SEM). Differences were considered to be
6
7 significant at the 5% level.
8
9
10
11
12
13
14
15
16
17
18
19
20
21
22
23
24
25
26
27
28
29
30
31
32
33
34
35
36
37
38
39
40
41
42
43
44
45
46
47
48
49
50
51
52
53
54
55
56
57
58
59
60

For Peer Review

RESULTS

Conduct of the study

All subjects completed the study as planned. Ten subjects (8 men, 26 ± 1.3 years) received saline and ten (8 men, 23.9 ± 1.6 years) received citalopram. Administration of citalopram or saline was well tolerated and did not induce any specific sensations or adverse symptoms.

Phases of the migrating motor complex

In all volunteers, two phase 3 contractions before **and at least one phase 3 contraction** after the administration of saline or citalopram **was** readily identified. Table 1 summarizes the effects of citalopram and saline on different phases of the MMC. The interval to the first phase 3 was significantly shorter after citalopram compared to saline (35 ± 6.4 vs. 120 ± 17 min after the previous phase 3, $p < 0.01$) (Figure 1). Administration of citalopram significantly shortened MMC cycle length, and this was due to shortening of phase 1 and phase 2 of the MMC cycle.

Phase 3 motor activity

Of the activity fronts prior to drug administration, 14 (35%) activity fronts had a gastric origin and 26 (65%) had a small intestinal origin. After saline, the origin of phase 3 of the MMC was not significantly altered. In contrast, administration of citalopram caused a premature activity front with jejunal origin in the vast majority of subjects (Table 1). The duration of phase 3 of the MMC cycle, as well as the propagation velocity of the phase 3s at the jejunal level, were not affected by citalopram (Table 1). The lack of gastric phase 3 activity after administration of citalopram precludes meaningful analysis of gastric phase 3 characteristics.

Phase 2 contractile activity

Phase 2 contractile activity was not significantly altered by saline administration. Citalopram on the other hand, increased the number of contractions per minute and the phase 2 motility index in the stomach (both $p=0.05$, Table 2). In the small intestine, citalopram increased the number of contractions per minute, their amplitude and mean area under the curve, and the phase 2 motility index (all $p\leq 0.05$, Table 2).

For Peer Review

1
2
3
4
5
6
7
8
9
10
11
12
13
14
15
16
17
18
19
20
21
22
23
24
25
26
27
28
29
30
31
32
33
34
35
36
37
38
39
40
41
42
43
44
45
46
47
48
49
50
51
52
53
54
55
56
57
58
59
60

DISCUSSION

The present study has shown that in the interdigestive state in man, acute intravenous administration of the selective 5HT reuptake inhibitor citalopram induces a premature phase 3 of MMC with jejunal onset. The MMC cycle length was significantly shortened by the administration of citalopram, at the expense of phase 1 and phase 2. Of all the phase 3s recorded preceding the administration of citalopram, 35% started in the stomach. After administration of citalopram, only 10% of phase 3s were observed to start in the stomach, which is a statistically significant decrease, and indicate that phase 3 motor activity in the stomach was suppressed. Except for the site of initiation, no differences in the duration and the velocity of migration of phase 3s were observed before and after citalopram. Citalopram stimulated phase 2 contractile activity, in the stomach as well as the small bowel.

Our observation that citalopram induced a premature jejunal phase 3 in man is consistent with a previous published study which showed shortened intestinal MMC cycles after a short period of oral treatment with paroxetine, a different selective 5HT reuptake inhibitor (15). According to that study, the release of 5HT, probably at the level of enteric nervous system, is involved in the control of interdigestive motility in man. Since then, the effects of 5HT on MMC had been only studied in animals. Administration of 5HT, or its precursor 5-hydrotryptophan, decreases MMC periodicity in animals (7,8), whereas administration of neural 5HT receptor antagonists increases MMC periodicity (5). Thus, our findings that citalopram reduced MMC periodicity strengthens the hypothesis that 5HT participates in the control of MMC in man.

Citalopram selectively and potently enhances inhibition of neuronal 5HT reuptake (17) and excessive 5HT would then activate 5HT receptors. It is unlikely that citalopram acts via a non-serotonergic mechanism on the MMC. The fact that citalopram demonstrates a very weak inhibition of noradrenaline reuptake argues

1
2
3 against an action through an adrenergic mechanism (17,18). Moreover, its very
4 weak affinity for muscarinic cholinergic receptors is unlikely to account for the
5 effects seen in interdigestive motility (17,18). **Although the mood-affecting central**
6 **actions of citalopram only show after a long lag time (generally several weeks)**
7 **we cannot exclude a central action of citalopram, further research is necessary to**
8 **investigate the exact mechanisms involved** (18-20).
9
10
11
12
13
14

15
16 A recent study in mice confirmed involvement of serotonergic nerves in the
17 control of propagating contractile complexes (24). Assuming that citalopram acts
18 on enteric nervous system to modify the interdigestive motility, we cannot
19 attribute its action to a certain 5HT receptor subtype. Several subtypes of 5HT
20 receptors are known (4,25). Of these, 5HT_{1A}, 5HT_{1P}, 5HT₃, and 5HT₄ receptors
21 have been identified in the enteric nervous system (25-30). In animals there is
22 evidence that 5HT₃ receptors participate in the control of the MMC (30), whereas
23 5HT₃ and 5HT₁ receptors seem to be involved in the control of interdigestive
24 motility in man (9,10).
25
26
27
28
29
30
31
32

33 **After citalopram treatment significantly less phase III contractions originated from**
34 **the stomach which indicates that phase 3 motor activity in the stomach was**
35 **suppressed.** It is thought that the gastrointestinal peptide motilin is involved in the
36 induction of gastric phase 3 (10,28-30) whereas somatostatin elicits phase 3 with
37 small intestinal origin, while abolishing gastric phase 3 (10,31-33). As we did not
38 determine plasma motilin and somatostatin concentrations, it is unclear whether
39 the effect of citalopram on gastric activity front is attributable to changes in
40 plasma concentrations of these or other gastrointestinal hormones.
41
42
43
44
45
46
47
48

49
50 Except for the site of initiation, no differences in the duration and the velocity of
51 migration of phase 3s were observed before and after citalopram. We also
52 showed that the phase 2 motility index was significantly enhanced both in
53 stomach and in small bowel after the administration of citalopram. On the other
54 hand, increased propagation velocity of phase 3s and absence of influence on
55
56
57
58
59
60

1
2
3 phase 2 motility index after paroxetine administration were demonstrated by
4 Gorard et al (15). These discordances may reflect differences in the studies
5 design. We used citalopram in a single **intravenous** dose, whereas Gorard et al
6 used paroxetine for 5 days. Moreover, in our study motility was recorded until two
7 consecutive phase 3s of the MMC had occurred before and after the
8 administration of citalopram, whereas motility was recorded for 16-18 hours by
9 Gorard et al (15). Finally, our catheter assembly allowed the adequate monitoring
10 of the migrating motor complex simultaneously in the distal antrum, the
11 duodenum, and the upper jejunum, whereas Gorard et al sited the transducers
12 distal to the duodenojejunal flexure.
13
14
15
16
17
18
19
20
21
22

23 **Mixed reports on the effect of citalopram for the treatment of irritable bowel**
24 **syndrome (IBS) are found in literature: we recently reported that citalopram could**
25 **improve symptoms in irritable bowel syndrome patients (34) while others could**
26 **not find improvement over placebo (35). In diarrhea-predominant IBS however**
27 **symptoms have been correlated to the shorter duration of the MMC (and**
28 **especially phase 2; 36), while in constipation-predominant IBS frequency and**
29 **amplitude of the MMC contractions are decreased (37). Should the findings of**
30 **the present study on the short term effect of citalopram be confirmed in a study**
31 **on the long term effects of citalopram we can speculate that citalopram could**
32 **improve constipation-predominant IBS while it might not improve diarrhea-**
33 **predominant IBS. Indeed, in the study of Talley et al 76% of all patients included**
34 **had diarrhea-predominant IBS and no improvement with citalopram could be**
35 **observed while in our study only 17% had diarrhea-predominant IBS, which could**
36 **explain the differences found. As a matter of fact, in constipation-predominant**
37 **IBS, another SSRI fluoxetine was found to significantly release abdominal**
38 **discomfort and increase bowel movement (38), which could indicate that**
39 **especially in constipation-predominant IBS citalopram could be an effective**
40 **treatment.**
41
42
43
44
45
46
47
48
49
50
51
52
53
54
55
56
57
58
59
60

1
2
3 In conclusion, the present study showed that intravenous administration of the
4 selective 5HT reuptake inhibitor citalopram induces a premature phase 3 with
5 jejunal onset, while less phase III contractions have a gastric origin indicating that
6 citalopram suppresses gastric activity fronts in the interdigestive state in man.
7
8 Moreover, phase 2 motility index was stimulated both in the stomach and in the
9 small intestine after the administration of citalopram. These data suggest that
10 release of 5HT, probably at the level of the enteric nervous system, is involved in
11 the control of MMC in man.
12
13
14
15
16
17
18
19
20
21
22
23
24
25
26
27
28
29
30
31
32
33
34
35
36
37
38
39
40
41
42
43
44
45
46
47
48
49
50
51
52
53
54
55
56
57
58
59
60

For Peer Review

REFERENCES

1. Szursewski JH. A migrating electric complex of the canine small intestine. *Am J Physiol* 1969; 217: 1757-63
2. Vantrappen G, Janssens J, Hellemans J, Ghoois Y. The interdigestive motor complex of normal subjects and patients with bacterial overgrowth of the small intestine. *J Clin Invest* 1977; 59: 1158-66
3. Sarna SK. Cyclic motor activity; migrating motor complex: 1985 *Gastroenterology* 1985; 89: 894-913
4. Gershon MD, Tack J. The serotonin signaling system: from basic understanding to drug development for functional GI disorders. *Gastroenterology*. 2007 Jan;132(1):397-414.
5. Ormsbee III HS, Silber DA, Hardy FE. Serotonin regulation of the canine migrating motor complex. *J Pharmacol Exp Ther* 1984; 231: 436-40
6. Pineiro-Carrero VM, Clench MH, Davis RH, Andres JM, Franzini DA, Mathias JR. Intestinal motility changes in rats after enteric serotonergic neuron destruction. *Am J Physiol* 1991; 260: G232-9
7. Ruckebusch Y, Bardon T. Involvement of serotonergic mechanisms in initiation of small intestine cyclic motor events. *Dig Dis Sci* 1984; 29: 520-7
8. Sagrada A, Brancaccio N, Schiavone A. 5-Hydroxytryptamine affects rat migrating myoelectric complexes through different receptor subtypes: evidence from 5-hydroxytryptophan administration. *Life Sci* 1990; 46:1207-16
9. Tack J, Coulie B, Wilmer A, Peeters T, Janssens J. Actions of the 5-hydroxytryptamine 1 receptor agonist sumatriptan on interdigestive gastrointestinal motility in man. *Gut* 1998; 42: 36-41
10. Wilmer A, Tack J, Coremans G, Janssens J, Peeters T, Vantrappen G. 5-Hydroxytryptamine₃ receptors are involved in the initiation of gastric phase 3 motor activity in man. *Gastroenterology* 1993;105:773-8.

11. Fujitsuka N, Asakawa A, Hayashi M, Sameshima M, Amitani H, Kojima S, Fujimiya M, Inui A. Selective serotonin reuptake inhibitors modify physiological gastrointestinal motor activities via 5-HT_{2c} receptor and acyl ghrelin. *Biol Psychiatry*. 2009 May 1;65(9):748-59.
12. Calvert EL, Whorwell PJ, Houghton LA. Inter-digestive and post-prandial antro-pyloro-duodenal motor activity in humans: effect of 5-hydroxytryptamine 1 receptor agonism. *Aliment Pharmacol Ther*. 2004 Apr 1;19(7):805-15.
13. Plaza MA. 5-hydroxytryptamine and the gastrointestinal migrating motor complex. *Curr Opin Investig Drugs*. 2001 Apr;2(4):539-44.
14. Haverback BJ, Davidson JD. Serotonin and the gastrointestinal tract. *Gastroenterology* 1958; 35: 570-7
15. Gorard DA, Libby GW, Farthing MJG. 5-Hydroxytryptamine and human small intestinal motility: effect of inhibiting 5-hydroxytryptamine reuptake. *Gut* 1994;35:496-500
16. Gershon MD, Jonakait GM. Uptake and release of 5-hydroxytryptamine by enteric 5-hydroxytryptaminergic neurons : effects of fluoxetine (Lilley 110140) and chlorimipramine *Br J Pharmacol* 1979 ; 66 : 7-9
17. Pawlowski L, Novak G, Gorka Z, Mazela H. Ro 11-2465 (cyan-imipramine), citalopram, and their N-desmethyl metabolites : effects on the uptake of 5-hydroxytryptamine and noradrenaline in vivo and related pharmacological activities. *Psychopharmacology* 1985; 86: 156-63
18. Milne R, Goa KL. Citalopram. A review of its pharmacodynamic and pharmacokinetic properties, and therapeutic potential in depressive illness. *Drugs* 1991 ; 41 :450-77
19. Baumann P, Nil R, Souche A, Montaldi S, Baettig D, Lambert S, Uehlinger C, Kasas A, Amey M, Jonzier-Perey M. A double-blind study of citalopram with and without lithium in the treatment of therapy-resistant depressive patients : a clinical, pharmacokinetic, and pharmacogenetic investigation. *Int Clin Psychopharmacol* 1996; 16: 307-14

- 1
2
3
4
5
6
7
8
9
10
11
12
13
14
15
16
17
18
19
20
21
22
23
24
25
26
27
28
29
30
31
32
33
34
35
36
37
38
39
40
41
42
43
44
45
46
47
48
49
50
51
52
53
54
55
56
57
58
59
60
20. Ekselius L, von Knorring L, Eberhard G. A double-blind multicenter trial comparing sertraline and citalopram in patients with major depression treated in general practice. *Int Clin Psychopharmacol* 1997; 12: 323-31
21. Humble, M & Wistedt, B. Serotonin, panic disorder and agoraphobia: short-term and long-term efficacy of citalopram in panic disorders. *Int Clin Psychopharmacol* 1992; 6:21-39
22. Bolanos-Jimenez, F, Manhaes de, CR & Fillion, G. (1994). Effect of chronic antidepressant treatment on 5-HT_{1B} presynaptic heteroreceptors inhibiting acetylcholine release. *Neuropharmacology* 1994; 33: 77-81.
23. Lotrich FE, Bies R, Muldoon MF, Manuck SB, Smith GS, Pollock BG. Neuroendocrine response to intravenous citalopram in healthy control subjects: pharmacokinetic influences. *Psychopharmacology (Berl)*. 2005; 178(2-3): 268-75
24. Neal KB, Parry LJ, Bornstein JC. Strain-specific genetics, anatomy and function of enteric neural serotonergic pathways in inbred mice. *J Physiol*. 2009 Feb 1;587(Pt 3):567-86.
25. Gershon MD. Review article: serotonin receptors and transporters -- roles in normal and abnormal gastrointestinal motility. *Aliment Pharmacol Ther*. 2004 Nov;20 Suppl 7:3-14.
26. Mawe GM, Branchek T, Gershon MD. Peripheral neural serotonin receptors: Identification and characterization with specific agonists and antagonists. *Proc Natl Acad Sci USA* 1986; 83: 9799-803
27. Pan H, Galligan JJ. 5HT_{1A} and 5HT₄ receptors mediate inhibition and facilitation of fast synaptic transmission in enteric neurons. *Am J Physiol* 1994; 266: G230-8
28. Tack J, Janssens J, Vantrappen G, Wood DJ. Actions of 5-hydroxytryptamine on myenteric neurones in the gastric antrum of the guinea-pig. *Am J Physiol* 1992; 263: G838-46
29. Tack J, Vanden Berghe P, Coulie B, Janssens J. Sumatriptan is an agonist at 5-HT receptors on myenteric neurones in the guinea-pig gastric antrum. *Neurogastroenterol Motil*. 2007 Jan;19(1):39-46.

- 1
2
3
4
5
6
7
8
9
10
11
12
13
14
15
16
17
18
19
20
21
22
23
24
25
26
27
28
29
30
31
32
33
34
35
36
37
38
39
40
41
42
43
44
45
46
47
48
49
50
51
52
53
54
55
56
57
58
59
60
30. Yosida N, Mizumoto A, Iwanaga Y, Ito Z. Effects of 5-hydroxytryptamine 3 receptors antagonists on gastrointestinal motor activity in conscious dogs. *J Pharmacol Exp Ther* 1991; 256: 272-8
31. Vantrappen GR, Janssens J, Peeters TL, Bloom SR, Christofides MC, Hellemans J. Motilin and the interdigestive migrating motor complex in man. *Dig Dis Sci* 1979; 24: 497-500
32. Sarna SK, Chey WY, Condon RE, Dodds WJ, Myers T, Chang TM. Cause-and-effect relationship between motilin and migrating myoelectrical complexes. *Am J Physiol* 1983; 245: G277-84
33. Peeters TL, Janssens J, Vantrappen G. Somatostatin and the interdigestive migrating motor complex in man. *Regul Pept* 1983; 5: 209-17.
34. Tack, J, Broekaert, D, Fischler, B, Van, OL, Gevers, AM & Janssens, J. A controlled crossover study of the selective serotonin reuptake inhibitor citalopram in irritable bowel syndrome. *Gut* (2006); 55: 1095-1103.
35. Talley, NJ, Kellow, JE, Boyce, P, Tennant, C, Huskic, S & Jones, M. Antidepressant therapy (imipramine and citalopram) for irritable bowel syndrome: a double-blind, randomized, placebo-controlled trial. *Dig Dis Sci* 2008; 53: 108-115.
36. Kellow, JE & Phillips, SF. Altered small bowel motility in irritable bowel syndrome is correlated with symptoms. *Gastroenterology* 1987; 92: 1885-1893.
37. Lind, CD. Motility disorders in the irritable bowel syndrome. *Gastroenterol Clin North Am* (1991); 20: 279-295.
38. Vahedi, H, Merat, S, Rashidioon, A, Ghoddoosi, A & Malekzadeh, R. The effect of fluoxetine in patients with pain and constipation-predominant irritable bowel syndrome: a double-blind randomized-controlled study. *Aliment Pharmacol Ther* (2005); 22: 381-38

ACKNOWLEDGEMENTS

Pieter Janssen is a Postdoctoral Research Fellow of the Research Foundation-Flanders (FWO-Vlaanderen). This study was funded by a Methusalem grant from Leuven University to Prof. Tack.

For Peer Review

1
2
3
4
5
6
7
8
9
10
11
12
13
14
15
16
17
18
19
20
21
22
23
24
25
26
27
28
29
30
31
32
33
34
35
36
37
38
39
40
41
42
43
44
45
46
47
48
49
50
51
52
53
54
55
56
57
58
59
60

TABLES

TABLE 1. Characteristics of MMC activity before and after administration of citalopram or placebo.

Variable	Before administration	After administration	p Value
Saline			
MMC cycle duration (min)	83.8 (14.5)	104.4 (16.7)	NS
Phase 1 duration (min)	12.7 (3.5)	12.1 (3.7)	NS
Phase 2 duration (min)	64.2 (15.0)	86.7 (17.4)	NS
Phase 3 duration (min)	6.9 (0.6)	5.6 (0.7)	NS
Phase 3 propagation velocity (cm/min)	5.4 (0.4)	5.8 (0.8)	NS
Phase 3, percentage gastric onset	30% (6/20)	43% (6/14)	NS
Citalopram			
MMC cycle duration (min)	86.4 (12.5)	49.5 (3.5)*	<0.001
Phase 1 duration (min)	13.7 (2.4)	7.1 (1.6)	0.01
Phase 2 duration (min)	66.7 (14.2)	37.6 (6.5)*	0.04
Phase 3 duration (min)	6.0 (0.5)	5.8 (0.6)	NS
Phase 3 propagation velocity (cm/min)	5.8 (0.2)	5.3 (0.2)	NS
Phase 3, percentage gastric onset	40% (8/20)	10% (2/21)*	0.03

Results are expressed as median (SEM). * $p < 0.05$ for values after administration of citalopram compared to administration of saline.

The duration of the different phases of the MMC was measured during the cycle preceding the administration of citalopram and the first cycle after the administration of citalopram at the most distal jejunal channel; the propagation velocity of phase 3 was measured at the jejunal level.

TABLE 2. Influence of citalopram and placebo on phase 2 contractility parameters.

Saline			
Phase 2 antral contraction frequency (n/min)	0.34±0.09	0.32±0.07	NS
Phase 2 antral contraction amplitude (mm Hg)	63.1±14.4	52.6±6.0	NS
Phase 2 antral contraction duration (sec)	5.3±0.7	5.1±0.3	NS
Phase 2 antral contraction area (mmHg*sec)	135.7±33.7	120.1±19.6	NS
Phase 2 antral motility index (mmHg*sec/min)	3.2±0.4	3.3±0.3	NS
Phase 2 small bowel contraction frequency (n/min)	1.2±0.2	1.4±0.2	NS
Phase 2 small bowel contraction amplitude (mm Hg)	29.1±1.1	29.0±2.0	NS
Phase 2 small bowel contraction duration (sec)	3.3±0.1	3.3±0.1	NS
Phase 2 small bowel contraction area (mmHg*sec)	58.9±5.2	57.0±3.6	NS
Phase 2 small bowel motility index (mmHg*sec/min)	4.1±0.2	4.2±0.2	NS
Citalopram			
Phase 2 antral contraction frequency (n/min)	0.78±0.09	1.03±0.09	0.05
Phase 2 antral contraction amplitude (mm Hg)	41.4±5.2	48.8±4.9	NS
Phase 2 antral contraction duration (sec)	4.1±0.2	4.4±0.2	NS
Phase 2 antral contraction area (mmHg*sec)	61.5±12.6	69.2±10.8	NS
Phase 2 antral motility index (mmHg*sec/min)	3.64±0.25	4.20±0.15	0.05
Phase 2 small bowel contraction frequency (n/min)	1.6±0.1	2.1±0.2	0.05
Phase 2 small bowel contraction amplitude (mm Hg)	25.1±2.3	28.5±1.7	0.03
Phase 2 small bowel contraction duration (sec)	3.1±0.1	3.3±0.1	NS
Phase 2 small bowel contraction area (mmHg*sec)	52.1±4.6	63.6±5.2	0.005
Phase 2 small bowel motility index (mmHg*sec/min)	4.4±0.1	4.8±0.2	0.02

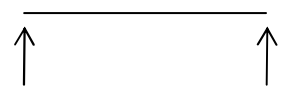
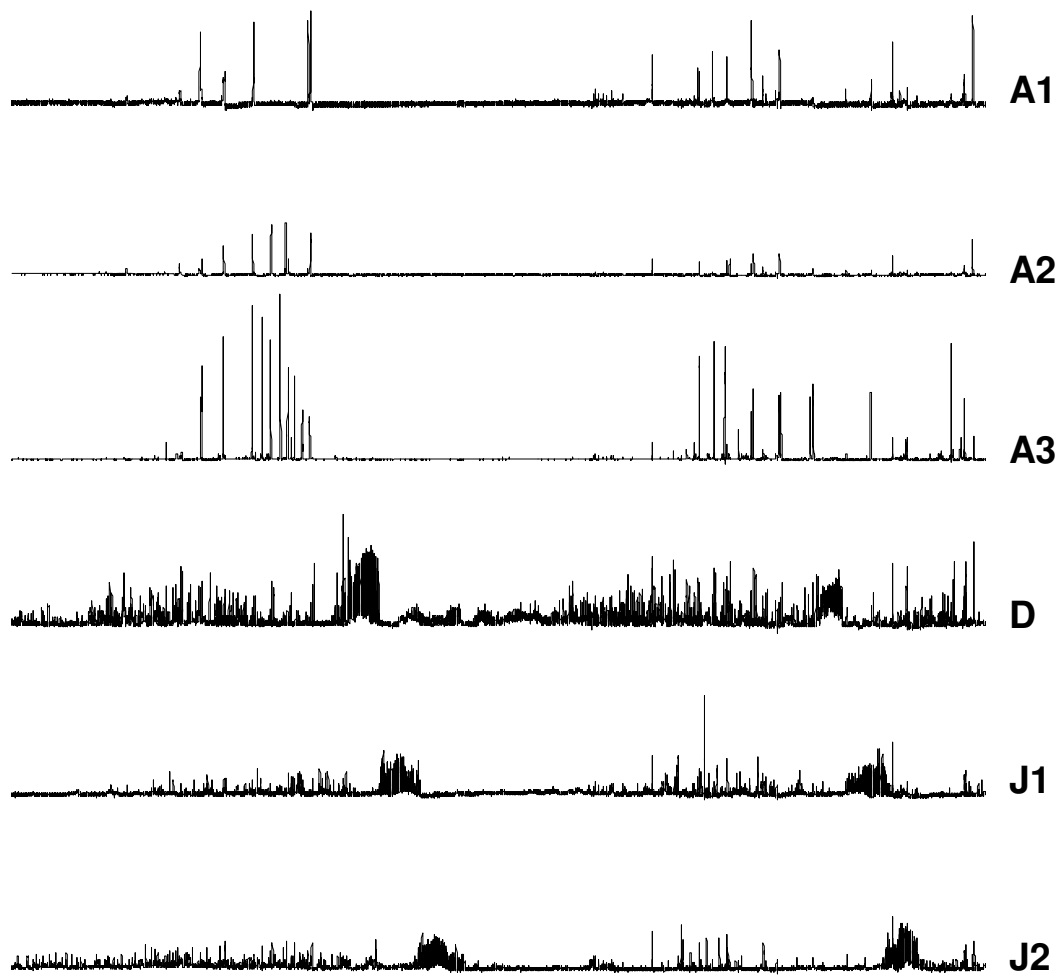
FIGURES

FIGURE 1. Effect of citalopram on interdigestive gastrointestinal motility in healthy volunteer. A1, A2, A3, antral recording sites; D, duodenal recording site; J1, J2, jejunal recording sites.

For Peer Review

1
2
3
4
5
6
7
8
9
10
11
12
13
14
15
16
17
18
19
20
21
22
23
24
25
26
27
28
29
30
31
32
33
34
35
36
37
38
39
40
41
42
43
44
45
46
47
48
49
50
51
52
53
54
55
56
57
58
59
60

A



Citalopram administration

1
2
3
4
5
6
7
8
9
10
11
12
13
14
15
16
17
18
19
20
21
22
23
24
25
26
27
28
29
30
31
32
33
34
35
36
37
38
39
40
41
42
43
44
45
46
47
48
49

1
2
3 Dear Editor, Reviewers,
4

5 We appreciate the interest you had in our paper, and would like to discuss the comments by the
6 reviewers point by point.
7
8
9

10
11 **Reviewer 1**
12

13 #1 The aim of this study was to examine the effect of acute inhibition of 5-HT reuptake. From
14 literature we know that after intravenous administration of 20 mg citalopram peak plasma
15 concentrations are reached within the hour and rapidly decrease afterwards (Lotrich *et al.*, 2005).
16 We therefore chose to study the effect on interdigestive motility in a period of maximally 2 hours.
17 Unfortunately, we could not determine plasma levels of citalopram and this is a weakness of the
18 present study. To determine plasma citalopram concentrations HPLC analysis experience is
19 necessary but this was not available at the time we conducted the study.
20
21
22

23 #2 The aim of the study was to examine the effect of acute inhibition of 5-HT reuptake. Long term
24 inhibition could induce compensation mechanisms that could act as an additional factor that makes
25 interpretation of the data more difficult. Hence, although a longer study (e.g. to determine the
26 frequency of phase III contractions) would indeed be very interesting this study would address
27 another question, setup and discussion and thus be another study.
28
29
30

31 #3 No crossover design was applied, mainly because this facilitates recruitment. It has to be noted
32 though that despite the fact that the study was not a cross-over study the effect of citalopram on
33 interdigestive motility was significant, indicating the relevance of our findings.
34
35

36 #4 The reviewers comment is correct. Especially after saline administration it was not possible to
37 detect 2 phases III in 2 hours. We apologize for the generalization of our statement and have
38 adjusted the sentence in question to: 'In all volunteers, two phase 3 contractions before and at least
39 one phase 3 contraction after the administration of saline or citalopram was readily identified.'
40
41

42 #5 Indeed, we did not observe phase III contractions with a gastric origin in all volunteers after
43 treatment with saline or citalopram, and therefore it is difficult to make a direct judgment whether
44 or not gastric phase III contractions are suppressed. However we can make valid conclusions on the
45 origin of the phase III contractions we observed and we found that after citalopram treatment
46 significantly less phase III contractions had a gastric origin. We propose to formulate our findings
47 more careful: in the first paragraph of the discussion we deleted the sentence in question and added
48 that after Citalopram treatment significantly less phase III originates in the stomach which indicates
49 that phase 3 motor activity in the stomach was suppressed. Further on in the 3rd paragraph of p11 we
50 adjusted the first sentence: 'After citalopram treatment significantly less phase III contractions
51 originated from the stomach which indicates that phase 3 motor activity in the stomach was
52 suppressed.'. Also in the conclusion we changed our formulation: 'while less phase III contractions
53 have a gastric origin indicating that citalopram suppresses gastric activity fronts in the interdigestive
54 state in man.'
55
56
57
58

59 #6 The sentence in question was adjusted accordingly: 'Although the mood-affecting central actions
60 of citalopram only show after a long lag time (generally several weeks) we cannot exclude a central

1
2
3 action of citalopram, further research is necessary to investigate the exact mechanisms involved (18-
4 20).’
5
6

7 #7 has been adjusted in the text
8
9

10 11 **Reviewer 2**

12
13 1) The intention was merely to suggest that citalopram has different long term vs short term effects.
14 This is of importance since in the present study we are interested in the short term effect and try to
15 avoid long term effect. Our intention was not to discuss in full the possible differences in the
16 mechanism of action on long and short term. We revised the sentence in question: ‘In the treatment
17 of depression and anxiety however, only long term treatment with citalopram lead to clinical
18 improvement (20, 21), indicating that short and long term treatment have a different mechanism of
19 action. A possible explanation is that long term treatment with citalopram leads to desensitisation,
20 especially of 5HT inhibitory auto-receptors (20, 22).’
21
22

23
24 2) The sentence was adjusted accordingly: ‘Upon intravenous infusion peak plasma levels of
25 citalopram are reached after 30 minutes and stable concentrations are maintained for at least 2
26 hours (23).’
27
28

29
30 3) We agree with the reviewer, we cannot exclude involvement of the central nervous system. The
31 text was changed accordingly: ‘Although the mood-affecting central actions of citalopram only show
32 after a long lag time (generally several weeks) we cannot exclude a central action of citalopram,
33 further research is necessary to investigate the exact mechanisms involved (18-20).’
34

35 4) Due to its speculative nature we commented on the implications in the discussion only and added
36 a paragraph before the discussion: ‘Mixed reports on the effect of citalopram for the treatment of
37 irritable bowel syndrome (IBS) are found in literature: we recently reported that citalopram could
38 improve symptoms in irritable bowel syndrome patients (34) while others could not find
39 improvement over placebo (35). In diarrhea-predominant IBS however symptoms have been
40 correlated to the shorter duration of the MMC (and especially phase II; 36), while in constipation-
41 predominant IBS frequency and amplitude of the MMC contractions are decreased (37). Should the
42 findings of the present study on the short term effect of citalopram be confirmed in a study on the
43 long term effects of citalopram we can speculate that citalopram could improve constipation-
44 predominant IBS while it might not improve diarrhea-predominant IBS. Indeed, in the study of Talley
45 et al 76% of all patients included had diarrhea-predominant IBS and no improvement with citalopram
46 could be observed while in our study only 17% had diarrhea-predominant IBS, which could explain
47 the differences found. As a matter of fact, in constipation-predominant IBS, another SSRI fluoxetine
48 was found to significantly release abdominal discomfort and increase bowel movement (38), which
49 could indicate that indeed in constipation-predominant IBS citalopram could be an effective
50 treatment.’
51
52
53
54
55
56
57
58
59

60 Reference List

1
2
3
4
5
6
7
8
9
10
11
12
13
14
15
16
17
18
19
20
21
22
23
24
25
26
27
28
29
30
31
32
33
34
35
36
37
38
39
40
41
42
43
44
45
46
47
48
49
50
51
52
53
54
55
56
57
58
59
60

1. Lotrich, FE, Bies, R, Muldoon, MF, Manuck, SB, Smith, GS & Pollock, BG. (2005). Neuroendocrine response to intravenous citalopram in healthy control subjects: pharmacokinetic influences. *Psychopharmacology*, **178**, 268-275.

For Peer Review