



Neuropeptide S Receptor (NPSR) Gene - Converging Evidence for a Role in Panic Disorder

Katharina Domschke, Andreas Reif, Heike Weber, Jan Richter, Christa Hohoff, Patricia Ohrmann, Anya Pedersen, Jochen Bauer, Thomas Suslow, Harald Kugel, et al.

► To cite this version:

Katharina Domschke, Andreas Reif, Heike Weber, Jan Richter, Christa Hohoff, et al.. Neuropeptide S Receptor (NPSR) Gene - Converging Evidence for a Role in Panic Disorder. *Molecular Psychiatry*, 2010, 10.1038/mp.2010.81 . hal-00552527

HAL Id: hal-00552527

<https://hal.science/hal-00552527>

Submitted on 6 Jan 2011

HAL is a multi-disciplinary open access archive for the deposit and dissemination of scientific research documents, whether they are published or not. The documents may come from teaching and research institutions in France or abroad, or from public or private research centers.

L'archive ouverte pluridisciplinaire **HAL**, est destinée au dépôt et à la diffusion de documents scientifiques de niveau recherche, publiés ou non, émanant des établissements d'enseignement et de recherche français ou étrangers, des laboratoires publics ou privés.

**NEUROPEPTIDE S RECEPTOR (NPSR) GENE -
CONVERGING EVIDENCE FOR A ROLE IN PANIC DISORDER**

**Katharina Domschke ^{1§*}, Andreas Reif ^{2§}, Heike Weber ², Jan Richter ³,
Christa Hohoff ¹, Patricia Ohrmann ¹, Anya Pedersen ^{1,4}, Jochen Bauer ¹,
Thomas Suslow ¹, Harald Kugel ⁵, Walter Heindel ⁵, Christian Baumann ²,
Benedikt Klauke ¹, Christian Jacob ², Wolfgang Maier ⁶, Jürgen Fritze ⁷,
Borwin Bandelow ⁸, Petra Krakowitzky ⁹, Matthias Rothermundt ¹,
Angelika Erhardt ¹⁰, Elisabeth Binder ¹⁰, Florian Holsboer ¹⁰, Alexander L. Gerlach ^{4,11},
Tilo Kircher ¹², Thomas Lang ^{13,14}, Georg W. Alpers ¹⁵, Andreas Ströhle ¹⁶,
Lydia Fehm ¹⁷, Andrew T. Gloster ¹⁸, Hans-Ulrich Wittchen ¹⁸,
Volker Arolt ¹, Paul Pauli ¹⁵, Alfons Hamm ³, Jürgen Deckert ²**

¹ Department of Psychiatry, University of Muenster, ² Department of Psychiatry, University of Wuerzburg, ³ Institute of Psychology, University of Greifswald, ⁴ Institute of Psychology, University of Muenster, ⁵ Department of Radiology, University of Muenster, ⁶ Department of Psychiatry, University of Bonn, ⁷ Department of Psychiatry, University of Frankfurt, ⁸ Department of Psychiatry, University of Goettingen, ⁹ Institute of Transfusion Medicine and Transplantation Immunology, University of Muenster, ¹⁰ Max-Planck-Institute of Psychiatry, Munich, ¹¹ Institute of Clinical Psychology and Psychotherapy, University of Koeln, ¹² Department of Psychiatry, University of Marburg, ¹³ Christoph-Dornier-Foundation for Clinical Psychology, Bremen, ¹⁴ Zentrum für Klinische Psychologie und Rehabilitation, University of Bremen, ¹⁵ Department of Psychology, University of Wuerzburg, ¹⁶ Department of Psychiatry, Charité, Berlin, ¹⁷ Institute of Psychology, University of Berlin, ¹⁸ Institute of Clinical Psychology and Psychotherapy, Technical University of Dresden, Germany

§ This is to indicate that Katharina Domschke and Andreas Reif contributed equally to this work and therefore should both be considered first authors.

*** Corresponding author**

Katharina Domschke, MA, MD, PhD, Department of Psychiatry, University of Muenster, Albert-Schweitzer-Strasse 11, D-48143 Muenster, Germany, Tel: ++49-251-8356601, Fax: ++49-251-8356612, Email: katharina.domschke@ukmuenster.de

Running title

Neuropeptide S receptor and panic disorder

ABSTRACT

Animal studies have suggested neuropeptide S (NPS) and its receptor (NPSR) to be involved in the pathogenesis of anxiety-related behavior. In the present study, a multilevel approach was applied to further elucidate the role of NPS in the etiology of human anxiety.

The functional NPSR A/T (Asn¹⁰⁷Ile) variant (rs324981) was investigated for association with (1) panic disorder with and without agoraphobia in two large, independent case-control studies, (2) dimensional anxiety traits, (3) autonomic arousal level during a behavioral avoidance test and (4) brain activation correlates of anxiety-related emotional processing in panic disorder.

The more active NPSR rs324981 T allele was found to be associated with panic disorder in the female subgroup of patients in both samples as well as in a meta-analytic approach. The T risk allele was further related to elevated anxiety sensitivity, increased heart rate and higher symptom reports during a behavioral avoidance test as well as decreased activity in the dorsolateral prefrontal, lateral orbitofrontal and anterior cingulate cortex during processing of fearful faces in patients with panic disorder.

The present results provide converging evidence for a female-dominant role of NPSR gene variation in panic disorder potentially via heightened autonomic arousal and distorted processing of anxiety-relevant emotional stimuli.

KEYWORDS

neuropeptide S – NPS – anxiety – panic – autonomic arousal – emotional processing

INTRODUCTION

Neuropeptides have been suggested to play a pivotal role in the pathogenesis of stress, arousal and anxiety. In particular, there is converging evidence from animal studies and molecular genetic studies in humans for neuropeptide S (NPS) and its cognate receptor (NPSR) to be involved in the mediation of anxiety-related behavior and anxiety disorders. NPS, a 20 amino acid peptide, acts as an agonist at the G-protein coupled NPSR increasing free intracellular calcium and cyclic adenosine monophosphate accumulation.¹⁻³

In rodent models, NPS or NPSR agonists have been observed to elicit a robustly increased arousal as indicated by hyperlocomotion, righting reflex and wakefulness.³⁻⁵ Interestingly, these arousal promoting effects seem to be paralleled by an anxiolytic-like profile of NPS since centrally administered NPS has been shown to increase the time mice spent exploring less protected or brighter areas of their environment (e.g., open field, four-plate test, elevated plus maze, elevated zero maze, light-dark box).³⁻⁵ An overall anxiolytic effect of NPS has furthermore been demonstrated with NPS significantly reducing the time mice spent burying unfamiliar objects (defensive marble-burying test).^{3,6} NPS also seems to reduce the physiological response to stress as demonstrated by attenuation of stress-induced hyperthermia (SIH) in mice.^{4,5} Consistently, NPSR knock-out mice were found to exhibit increased anxiety-like behavior, and accordingly reduced exploratory activity.⁷ On an anatomical level, NPS has been shown to be expressed in the amygdaloid complex⁸ and exert a modulatory effect on both afferent and intrinsic transmission in amygdala networks in rodent models.⁹⁻¹¹ On a cellular level, NPS increases glutamatergic transmission to intercalated GABAergic neurons in the amygdala conferring an inhibitory influence on the central amygdaloid nucleus and thereby attenuating anxiety-like responses.⁹ Given the crucial role of the amygdala in the elicitation and regulation of anxiety-related responses¹²⁻¹⁴ and

increased amygdala activity in patients with anxiety disorders,¹⁵⁻¹⁸ this finding underlines the importance of NPS in the processing of acute fear. Additionally, acute administration of caffeine, which is a potent anxiogenic and arousal-increasing substance in many participants,¹⁹ has been observed to induce a marked decrease in mRNA levels of NPS itself, but to up-regulate NPSR expression levels in the brainstem.²⁰ Finally, NPS can selectively inhibit the release of serotonin and norepinephrine in the frontal cortex,²¹ which might constitute another mechanism through which NPS modulates anxiety- and arousal-related behavior.

The human NPSR gene is located on chromosome 7p14.3 and comprises at least nine exons. The chromosomal region 7p14-15 has previously been found to be linked to panic disorder²²⁻²⁴ rendering the NPSR gene a promising functional and positional candidate gene. An A/T single nucleotide polymorphism (SNP) (rs324981) at position 107 of the NPSR gene leading to an amino acid exchange from Asn to Ile (N¹⁰⁷I) is of functional relevance with the T allele (Ile¹⁰⁷) increasing NPSR expression and NPS efficacy at NPSR about tenfold.^{25,26} Homozygosity for the less active A allele (Asn¹⁰⁷) was found to be underrepresented in the male (n=51) subgroup of 140 Japanese panic disorder patients suggesting the higher active T (Ile¹⁰⁷) allele to constitute a risk factor for panic disorder.²⁷

In the current study, a multilevel approach was applied to further elucidate the role of NPS in the pathogenesis of human anxiety. In detail, it was investigated whether the functional NPSR A/T (Asn¹⁰⁷Ile) variant (rs324981) was associated (1) with the categorical phenotype of panic disorder with and without agoraphobia in two independent, large and well-controlled case-control studies, (2) participants' scores on dimensional anxiety traits such as anxiety sensitivity, (3) with autonomic arousal level as reflected by heart rate and symptom ratings during a behavioral avoidance test and (4) with brain activation correlates of

anxiety-related emotional processing in patients with panic disorder with and without agoraphobia.

MATERIALS/SUBJECTS AND METHODS

Association studies with panic disorder and dimensional anxiety traits

Samples

The discovery sample (ascertained in Münster, Munich, Würzburg, Bonn and Göttingen and hereafter termed MMWBG sample) comprised 499 unrelated German patients with panic disorder (female=312, male=187; mean age 38.14 ± 11.61 ; panic disorder with agoraphobia: 75.7%). The diagnosis of panic disorder was ascertained by experienced psychiatrists on the basis of medical records and structured clinical interviews (SADS-LA, CIDI, SKID-I) according to the criteria of DSM-III-R or DSM-IV, respectively.²⁸⁻³⁰ Patients with bipolar disorder, schizophrenia, mental retardation, neurological or neurodegenerative disorders impairing psychiatric evaluation were not included in this analysis. Data regarding comorbid depression was available for 497 of these patients, of whom 15% suffered from a comorbid major depressive episode. The control group consisted of 499 unrelated anonymous blood donors of German descent (female=312, male=187; mean age 40.01 ± 12.55), who due to anonymity requirements could not be controlled for the presence of mental diseases. The study was approved of by the respective local ethical committees and informed consent was obtained from all participating subjects.

The replication sample is a subsample of patients from the Mechanisms of Action in CBT (MAC) Study in patients with panic disorder with agoraphobia³¹ obtained from the BMBF "Panic Network" consisting of 277 of the total 369 included patients. In the patient sample (n=277, female=209, male=68; mean age 36.40 ± 10.96), the diagnosis of panic

disorder with agoraphobia was established by a structured clinical interview and verified by clinical interview (Composite International Diagnostic Interview, CIDI) according to DSM-IV criteria.³⁰ Patients with bipolar disorder, schizophrenia, mental retardation, neurological and neurodegenerative disorders were not included in this study, 35% of the patients suffered from a 12-month comorbid diagnosis of depression.³¹ All patients were free of psychotropic medication. For categorical association studies, control subjects matched 1:1 by sex (n=277, female=209, male=68; mean age 28.90±7.67) were drawn from a larger number of screened healthy controls (n=519, female=361, male=158; mean age 25.61±6.72). The complete control sample (n=519) was used to test for association of NPSR rs324981 with dimensional anxiety traits. Absence of mental axis I disorders was established by experienced psychologists on the basis of a structured clinical interview (Mini International Neuropsychiatric Interview, MINI) according to the criteria of DSM-IV.³⁰ For both patient and control groups, panic fear and anxiety sensitivity were evaluated by German versions of the Agoraphobic Cognitions Questionnaire (ACQ)^{32,33} and Anxiety Sensitivity Index (ASI).^{34,35} Cases as well as controls were of Caucasian origin. The study was approved of by the ethic committee of Würzburg and written informed consent was obtained from all participating subjects.

Genotyping

To determine the functional NPSR rs324981 A/T (Asn¹⁰⁷Ile) polymorphism, DNA isolated from venous blood samples was amplified by PCR using the primers F: 5'-GAAGGAAAAAATTAAAAATGAACCTCCCCAGGATTTCAT and R: 5'-TTCTACCCAGGAGAAAGCGGGCAGTTTGATGCA resulting in an amplicon size of 353 bp. Standard PCR was carried out in a 20 µl volume containing 45-60 ng of genomic DNA, 10 pmol of each primer, 200 µM dNTPs, 0.4 U TaqTM DNA Polymerase (Eppendorf AG, Hamburg, Germany), 50 mM KCl, 1.5 mM MgCl₂ and 10 mM TRIS-HCl (pH 8.4). After an 5

min denaturation, 35 cycles were carried out consisting of 30 s at 94°C, 30 s at 66°C and 60 s at 72°C, followed by a final extension time of 10 min at 72°C. Amplicons were digested with TasI (Fermentas) (1U), separated for 2 h on a 15% polyacrylamide gel and visualized by silver-staining. Hardy-Weinberg criteria, as calculated by the online program DeFinetti (<http://ihg.gsf.de/cgi-bin/hw/hwa1.pl>; Wienker TF and Strom TM), were fulfilled for genotype distributions of NPSR rs324981 in all tested samples (all p values > 0.05). There were genotyping failures in ten patients resulting in a total n of 489 patients (female=305, male=184) in the discovery sample available for further analysis.

Statistical analysis

Statistical analyses of allele and genotype distributions were performed by means of Chi-Square test as implemented in Haploview version 3.2 and Armitage's trend test as provided by DeFinetti. Additionally, grouped genotype (AA vs. AT/TT) distribution was statistically analyzed based on our results pointing towards a dominant model for the T allele and in analogy to the initial study by Okamura et al. explicitly reporting an under-representation of the homozygous AA genotype in patients with panic disorder.²⁷ Both association studies have also been analyzed jointly using the same procedure; furthermore, meta-analytic treatment of the studies was performed: Odds ratios (ORs) were calculated as a measure for effect size; thereafter, the Q-statistic^{36,37} was applied to assess heterogeneity. Inconsistency across studies was quantified with I² metric ($I^2=Q\text{-df}/Q$).³⁸ In absence of heterogeneity, ORs were combined using fixed-effects models;³⁹ if significant heterogeneity was detected, joint ORs were derived from random-effects models as denoted in figures 1 a, b, c.⁴⁰ Calculations were performed using R version 2.10⁴¹ along with the package metafor version 0.5-7.⁴²

Psychophysiological assessment in a behavioral avoidance test

264 German patients suffering from panic disorder and agoraphobia, who were part of the replication sample (MAC sample), were investigated in a behavioral avoidance test (BAT). Thirty patients were excluded from the analysis because they did not enter the small, lightproof chamber, and 29 patients had to be excluded due to measurement failures. From the remaining sample of 205 patients, 55 patients were homozygous NPSR rs324981 A allele carriers and were compared to the remaining 150 T allele carriers. The groups did not differ in gender, $\chi^2=1.58$, $p=0.209$ (AA: 37 female and 18 male patients; AT/TT: 114 female and 36 male patients), and age, $F(1, 203)<1$, $p=0.80$ (AA: 35.18 years \pm 1.57 SE ; AT/TT: 35.62 years \pm 0.87 SE). After arriving at the laboratory, patients were informed about the procedure before the sensors for recording of electrocardiogram (ECG) were attached. During anticipation, patients were sitting for 10 minutes in a front of a small (75 cm wide, 120 cm long, 190 cm high), dark chamber with the door open. During exposure, patients were locked in the chamber and told to stay as long as possible for a maximum of 10 minutes. During recovery, patients again sat in front of the opened chamber for 8 minutes. Patients could terminate the BAT at any time during the procedure. Patients were instructed to rate intensity of 13 panic symptoms and subjective indices of anxiety on a scale from 1 to 10 after each period.

The ECG was measured using an Einthoven lead II setup with two standard, electrolyte-filled Ag/AgCl electrodes (Marquette Hellige). The raw signal was filtered (8-13 Hz bandpass) and amplified using a Coulbourn V75-04 bioamplifier and continuously digitized with a sampling rate of 100 Hz. Heart rate was derived from ECG signal using software provided by ANSLAB.⁴³ Inter-beat intervals were checked and corrected whenever misplaced R-wave triggers had occurred (due to increased T-waves or movement artifacts) and converted to heart rate (beats per minute, bpm) in half-second bins. Mean heart rate was calculated during anticipation, exposure and recovery. This part of the study was approved by

the ethics committee of the Technical University of Dresden and informed consent was obtained from all participating subjects.

To test effects of genotype on symptom reports and autonomic arousal, a mixed-model analysis of variance (ANOVA) was applied including genotype (AA vs. AT/TT) as a between-subjects factor and block (anticipation vs. exposure vs. recovery) as a within-subjects factor. All statistical tests used a significance level of $p < 0.05$.

Functional imaging during presentation of emotional stimuli

20 patients with panic disorder were investigated using an imaging genetic approach (female=12, male=8; mean age 36.75 ± 9.39). Panic disorder was diagnosed by experienced psychiatrists on the basis of medical records and a structured clinical interview (SKID-I) according to the criteria of DSM-IV.³⁰ Only patients with primary panic disorder were included, secondary life-time diagnoses were social phobia in 10 and major depression in 5 patients. 10 patients were treated with a selective serotonin re-uptake inhibitor, the other 10 patients were free of medication. This part of the study was approved by the local ethical committee in Muenster and informed consent was obtained from all participating subjects.

Technical details of fMRI data acquisition and processing have been reported in detail previously.^{44,45} Briefly, subjects viewed 30 sec blocks of alternating emotional (fearful, angry, happy, neutral) faces⁴⁶ or a no-face control stimulus (gray rectangle). Emotional stimuli were presented twice per second in a random sequence for 500 ms. T2* functional data were acquired at a 3 Tesla scanner (Gyrosan Intera 3.0 T, Philips Medical Systems, Best, NL; matrix 128*128, resolution 1.75mm*1.75m*3.5mm; TR=3s, TE=30 ms, FA=90°). Functional imaging data were preprocessed (motion corrected, normalized to standard MNI space, and smoothed) with a published protocol using SPM5 (Wellcome Department of Cognitive Neurology, London, UK). Statistical analysis was performed by modeling the different conditions (fearful, angry, happy, neutral, no face) as variables within the context of the

general linear model (modeled with a standard hemodynamic response function). Subject-specific contrasts, reflecting emotion-related activation (F, A, H, and N vs. no face), were entered into a random-effects analysis. Voxel values of 5 x 2 predefined regions of interest (ROI)⁴⁷ were extracted on the basis of a-priori hypotheses regarding potential involvement of these regions in emotional stimuli processing (amygdala, orbitofrontal cortex, ventromedial prefrontal cortex, dorsolateral prefrontal cortex, anterior cingulate cortex), summarized by mean and tested among the different conditions using the MarsBaR toolbox.⁴⁸ Contrast values were used for further analyses. To depict activations on anatomical MRI slices, the Wake Forest University PickAtlas was applied for the same regions. The statistical threshold was set at $p < 0.001$ (uncorrected) with clusters defined by at least 10 contiguous voxels of significant response. To test effects of genotype on activation in brain regions of interest, a multivariate analysis of variance (MANOVA) was applied including genotype (AA vs. AT/TT) as a between-subjects factor and four contrast values (fearful, angry, happy, neutral vs. no faces) as a within-subjects factor. There were no statistically detectable differences in medication with SSRIs ($p = 0.639$), sex ($p = 0.085$) and comorbidity with major depression ($p = 0.787$) or social phobia ($p = 0.639$) across NPSR genotype groups as calculated by Chi-Square test. However, since genotype groups differed for age ($T = 2.456$, $p = 0.024$), age was included as a covariate in all further tests. All statistical tests used a significance level of $p < 0.05$.

RESULTS

Association studies with panic disorder

Allele and genotype frequencies of NPSR rs324981 in patient and control samples are given in table 1. In the discovery MMWBG sample, the NPSR rs324981 AA genotype as compared to carriers of at least one T allele was underrepresented in patients with panic

disorder ($p=0.003$). Stratification for gender revealed that this effect held true for both genders, however, was more pronounced in the female subgroup of patients (female: $p=0.03$; male: $p=0.05$) (see table 1).

In an attempt to replicate the association of NPSR rs324981 with panic disorder, we interrogated a second, independent case-control sample of 277 patients suffering from panic disorder with agoraphobia (MAC sample), along with matched controls (table 1). Genotyping procedures and statistical analyses were identical to the discovery sample. Again, the NPSR rs324981 AA genotype was significantly under-represented in female patients with panic disorder, while there was no significant effect in the male or the total sample (see table 1).

[INSERT TABLE 1 ABOUT HERE]

When both samples were analyzed jointly in a meta-association approach leading to a combined sample size of 766 patients and 776 controls, there was a highly significant association of the NPSR rs324981 risk genotypes containing at least one T allele with disease in the total sample (Armitage's trend test OR 1.28, $\chi^2=12.11$, $p=0.0005$) as well as in the female (Armitage's trend test OR 1.35, $\chi^2=11.95$, $p=0.00055$), but not the male sub-sample (Armitage's trend test OR 1.15, $\chi^2=1.25$, $p=0.263$). As such a meta-association approach might bear several problematic issues, such as ethnic background admixture (although this is unlikely as both samples were ascertained in Germany), we also treated the data in a meta-analytic manner (see figure 1). Association of the NPSR rs324981 T risk allele with panic disorder was confirmed in this meta-analysis, yielding an OR of 1.38 ($p=0.004$), which held true in the female (OR 1.49, $p=0.004$), but not the male sub-sample (OR 0.95, $p>0.1$).

[INSERT FIGURE 1 ABOUT HERE]

Association study with dimensional anxiety traits

Next, we examined whether the NPSR rs324981 T allele also influences dimensional constructs associated with panic disorder and agoraphobia. To do so, we tested whether the Agoraphobic Cognitions Questionnaire (ACQ) and Anxiety Sensitivity Index (ASI) were associated with NPSR rs324981 in patients from the MAC study as well as 519 healthy controls. Although there was not a significant association in control subjects (ACQ, $p=0.41$; ASI, $p=0.99$), the ASI (but not the ACQ; best $p=0.31$) score was significantly associated with genotype in the expected direction in patients: while NPSR rs324981 AA carriers had an ASI score of 27.5 ± 11.1 , T allele carriers displayed a score of 32.1 ± 11.7 ($p=0.002$) (see figure 2). Again, the difference was due to the female sub-sample (27.0 ± 11.7 vs. 32.6 ± 11.8 , $p=0.001$) and not present in the male sub-sample (28.6 ± 11.8 vs. 30.2 ± 11.2 , $p=0.29$).

[INSERT FIGURE 2 ABOUT HERE]

Genetic modulation of heart rate and symptom reports: Behavioral Avoidance Test (BAT)

Genotype groups (AA=55, AT=102, TT=48) did not differ significantly in duration of exposure, Group $F(1, 203) < 1$, $p=0.33$ (AA: $539.98 \text{ sec} \pm 22.74 \text{ SE}$; AT/TT: $514.00 \text{ sec} \pm 13.77 \text{ SE}$). As expected, mean heart rate and symptom reports significantly increased from anticipation to exposure and decreased again during recovery (Block $F(2, 406) = 28.69$, $p < 0.001$; Block $F(2, 406) = 90.42$, $p < 0.001$ for heart rate and symptom reports, respectively) demonstrating that the BAT reliably induced intense fear in this group of patients.

NPSR rs324981 genotype systematically modulated these response patterns. Homozygous A allele carriers showed significantly lower overall heart rate than T allele carriers, Group $F(1, 203) = 6.39$, $p < 0.05$, which was not modulated by conditions (figure 3), thus depicting an overall larger arousal response during all three phases of the BAT. Symptom reports were also significantly modulated but showed a different pattern. While A

and T allele carriers did not differ in their symptom reports during anticipation and recovery, T allele carriers reported significantly more intense symptoms during acute exposure, Block \times Group $F(2, 406) = 4.26, p < 0.05$.

[INSERT FIGURE 3 ABOUT HERE]

Genetic modulation of fear circuit activation

We observed association of NPSR rs324981 with brain activation responses to fearful faces in contrast to the no face condition (figure 4): the protective AA genotype was found to be associated with an increased activation in the dorsolateral prefrontal cortex (left: AA: mean=0.221, SD=0.097; AT/TT: mean=0.025, SD=0.285; $F=3.857, p=0.042$; right: AA: mean=0.193, SD=0.170; AT/TT: mean=0.048, SD=0.306; $F=4.182, p=0.033$) and lateral orbitofrontal cortex (left: AA: mean=0.267, SD=0.124; AT/TT: mean=0.092, SD=0.251; $F=2.621, p=0.102$; right: AA: mean=0.243, SD=0.243; AT/TT: mean=0.044, SD=0.259; $F=3.674, p=0.047$), while carriers of at least one T risk allele exhibited a significantly decreased activity in the anterior cingulate cortex (left: AA: mean=-0.037, SD=0.352; AT/TT: mean=-0.255, SD=0.408; $F=4.880, p=0.021$; right: AA: mean=0.009, SD=0.301; AT/TT: mean=-0.197, SD=0.402; $F=5.962, p=0.011$).

No other regions of interest including the amygdala were found to be associated with NPSR rs324981 at the corrected threshold in response to fearful faces. There was no significant impact of NPSR rs324981 on responsiveness in any of the regions of interest to happy, angry or neutral faces.

[INSERT FIGURE 4 ABOUT HERE]

DISCUSSION

In the present study, association of the more active NPSR rs324981 T allele with the categorical diagnosis of panic disorder with and without agoraphobia was observed in two independent, large case-control studies as well as in a meta-analytic approach. This finding strengthens recent evidence arising from animal models for a pivotal role of neuropeptide S in the expression of anxiety^{3-7,9-11,49} and for a risk locus on chromosome 7p14 containing the NPSR gene in panic disorder.^{22-24,27}

Interestingly, in both samples comprising a total of 766 patients association of NPSR gene variation with panic disorder strongly originated from or was even restricted to the female sub-group of patients (n=514). This finding is in line with previous molecular genetic reports of female-specific association findings in panic disorder possibly via hormonal interactions or female-specific transcriptional patterns.^{e.g.,50-52} From an evolutionary perspective, one might speculate that the evolutionarily “newer” T allele variant might convey a beneficial effect by optimizing the fight-or-flight reaction via increased arousal levels, which might be positive in more male-dominant predatory environments such as hunting, but not in comparatively safe agricultural or household environments. The present female-dominant finding is contrary to the observation by Okamura et al. who reported an association of NPSR rs324981 with panic disorder in the male sub-group of patients only.²⁷ However, as their male subsample of patients was very small (n=51) and NPSR rs324981 genotype distribution in male control subjects did not conform to Hardy-Weinberg equilibrium, this observation is finally inconclusive. Nevertheless, population-specific differences across Caucasian and Asian samples, as already observed for other polymorphisms, may explain this discrepancy.^{e.g.,53}

Association of the gain-of-function NPSR rs324981 T allele with panic disorder in humans seems inconsistent with findings in rodent models, where NPS and agonists at NPSR have been shown to rather exert a dose-dependent anxiolytic effect in the open field, the light-dark box, the elevated plus maze and marble-burying paradigms³ (although it should be noted that pharmacological interventions during adulthood do not readily mimic genetically driven alterations during ontogeny). A possible explanation of this paradox might be that panic disorder is to a great extent conferred via an increased level of arousal,^{e.g.,54-56} which in animal models has been found to be driven by increased NPS activity with a potentially differential dose-dependent effect on arousal and anxiety, respectively.^{1,3-5} Increased arousal mediated by the more active T allele would be in line with Smith et al. reporting NPS to cause a significant stimulation of the hypothalamo-pituitary-adrenal (HPA) axis with an increase in plasma ACTH and corticosterone along with increased arousal-like behavior in rats.⁵⁷ This hypothesis of increased arousal possibly mediating the anxiety-increasing effect of NPSR gain of function gene variation is substantiated by several translational findings at different levels in the present study:

1) The NPSR rs324981 T risk allele was observed to be associated with increased anxiety sensitivity as measured by the Anxiety Sensitivity Index. Anxiety sensitivity is a dimensional construct measuring the extent to which individuals believe that symptoms of arousal and anxiety can have harmful somatic, social or psychological consequences.³⁵ Several studies provide evidence for anxiety sensitivity predicting fear responses to bodily sensations increasing physiological arousal,⁵⁸ e.g., following a stair-stepping task⁵⁹ or hyperventilation challenge,⁶⁰ during detection of changes in pulse transit time⁶¹ or in response to caffeine administration,⁶² and ASI seems to be a predictor for the development of panic disorder after periods of stress.⁶³ So, the observed association of the NPSR rs324981 T risk allele with increased anxiety sensitivity might in part reflect an increased level of arousal.

Additionally, individual anxiety sensitivity profiles seem to discriminatively characterize specific panic disorder subtypes since in patients with panic disorder high scores on the ASI have been reported to be associated with the respiratory subtype of panic disorder⁶⁴ and to predict symptomatological reaction to CO₂⁶⁵ as well as increased subjective fear during hyperventilation challenge.⁶⁶ Given that patients with the respiratory subtype of panic disorder are characterized by a particularly high familial loading of panic disorder and thereby a potentially higher genetic vulnerability,⁶⁷ NPSR gene variation associated with high anxiety sensitivity in patients with panic disorder might in part reflect vulnerability towards this particular subtype of patients with panic disorder, which, however, remains to be elucidated in future studies. Finally, women with panic disorder score higher than men on the AS physical concerns subscale,⁶⁸ and anxiety sensitivity has been shown to be heritable particularly in women.⁶⁹ So, the present finding of NPSR gene variation to be associated with the categorical diagnosis of panic disorder particularly in female patients might in part be explained by its association with the dimensional phenotype of anxiety sensitivity restricted to female patients.

2) The NPSR rs324981 T risk allele was related to overall increased heart rate during exposure but also during anticipation and even recovery during a behavioral avoidance test. These data are consistent with the notion that patients who carry the T risk allele have an enhanced sympathomimetic activation and consequently arousal level. In challenging situations in which the arousal response further increases over an already elevated baseline level, these patients are more prone to experience panic symptoms. These findings are in line with modern learning theories of panic disorder⁵⁵ postulating that internal cues of elevated arousal increase the chance of experiencing another panic attack once they have been associated with aversive responses.^{e.g.,70} The current data suggest that not only conditioned anxious apprehension but also genetic risk factors contribute to the increased arousal level

and might therefore uncover an important missing link in the understanding of the mechanisms involved in the development of a panic disorder.

3) We observed an NPSR rs324981 genotype-dependent brain activation pattern in response to anxiety-relevant emotional stimuli. The NPSR rs324981 T risk allele was found to be associated with significantly decreased activity in the anterior cingulate cortex. This result is in line with previous studies reporting anterior cingulate cortex volume reduction in patients with panic disorder^{71,72} and diminished cingulate activity in patients with panic disorder during identification of fearful facial affect compared to healthy controls.⁷³ Decreased cingulate cortex activity has been hypothesized to be due to a chronic hyperarousal in patients with panic disorder,⁷⁴ since decreased cingulate cortex activity appears to be associated with engagement of arousal networks particularly during processing of threat-related stimuli also in other anxiety disorders such as simple phobias and posttraumatic stress disorder.⁷⁵⁻⁷⁸ Given that NPS has been found to dose-dependently elicit increased arousal response as detailed above, the NPSR rs324981 T allele increasing NPSR expression and NPS efficacy at NPSR might confer a heightened risk of panic disorder via an elevated level of arousal as reflected by decreased cingulate cortex activity. Additionally, homozygosity for the A allele was associated with significantly increased activity in the dorsolateral prefrontal and orbitofrontal cortex during the processing of fearful faces compared to activation in T risk allele carriers. Given the well-established role of the prefrontal and orbitofrontal cortex to attenuate an emotional response to fear/threat-related stimuli in anxiety disorders by inhibition of amygdala activation via a top-down mechanism,^{e.g.,13-15,78} increased activity in those regions might contribute to the observed protective effect of the NPSR rs324981 AA genotype with respect to panic disorder.

Several limitations of the present study have to be considered: Patients and controls in the discovery and replication samples were not completely matched for age in that some of

the control subjects still are at risk to develop panic disorder. This, however would bias against an association finding and not favor a false positive finding. Indeed, this may even explain the somewhat weaker association in the replication sample as here the age difference was larger. Also, the discovery and replication sample differed with respect to the ratio of panic disorder patients with and without agoraphobia with a smaller agoraphobia ratio in the discovery sample possibly. Furthermore, comorbid depression might constitute a confounding factor, particularly, since the discovery and the replication samples differed in the rate of comorbid depression. A further limitation of the present study is that no non-Caucasian populations were investigated rendering comparison to the study by Okamura et al.²⁷ difficult. However, although in all samples Caucasian ancestry was ascertained, ethnic stratification even within the German population cannot be excluded,^{e.g.,79} particularly since no genomic control has been performed in the presently investigated samples. The effect of genotype on the ASI is only found in patients, but not in controls. One possible explanation may be the small variation of anxiety sensitivity in our supra-normal control sample. Finally, caution and restraint is necessary in the interpretation of the imaging genetic part of the study, given a relatively small number of patients and an explorative statistical approach not corrected for multiple testing. Apart from significantly decreased activity in the anterior cingulate cortex in response to fearful faces, p-values would not withstand Bonferroni correction for the four MANOVAs that were performed for the four different contrasts (fearful, angry, happy, neutral vs. no faces) over all ROIs resulting in a corrected p-value of 0.0125 (two-sided) or 0.025 (one-sided), respectively, which might reflect a possible type I error. However, as largely debated, Bonferroni correction might be too conservative for strictly hypothesis-driven studies as the present one and actually increase the probability of a type II error. A further limitation is that the small sample size did not allow for meaningful statistical analyses in subsamples stratified for gender, which, given a female-dominant result in the categorical

association studies, would have been of interest also in the imaging genetic part of this study. Furthermore, although no biased distribution of gender, medication with SSRIs and comorbidity with major depression or social phobia across NPSR genotype groups could be discerned, these factors still could constitute possible confounding factors in the evaluation of emotional processing. For instance, either single dose or subchronic (7 to 21 days) medication with SSRIs has been shown to attenuate amygdala, hippocampus and medial prefrontal cortex response to aversive facial expression.^{cf. 80-82} Thus, besides a potential ceiling effect due to generally increased baseline amygdala activity in patients with panic disorder, this may partly explain why no amygdala activation could be observed as with previous studies in this sample.^{cf.44} Additionally, patients with social phobia tend to evaluate neutral faces as potentially threatening and more aversive than healthy controls or possibly also patients with pure panic disorder,⁸³ which might have influenced the present results. Future studies will have to elucidate the mechanisms by which genetic variation of NPSR modulates the sympathomimetic system, cingulate and orbito-/prefrontal cortex activity and their possible functional interactions. One such mechanism may be mediated by the startle reflex which therefore is currently under investigation in our group.

In summary, the present body of research provides converging lines of evidence for a role of NPSR gene variation in the pathogenesis of panic disorder. The more active NPSR rs324981 T allele (Ile¹⁰⁷) has been found to be associated with the categorical phenotype of panic disorder in a female-dominant manner, possibly mediated via increased arousal levels as reflected by elevated anxiety sensitivity, increased autonomic arousal as well as distorted processing of fear-related emotional stimuli. In synopsis with previous evidence from animal models, these findings might nourish future studies exploring a potentially beneficial use of therapeutic agents targeting the NPS system in anxiety disorders.

ACKNOWLEDGEMENTS

This study was supported by the Deutsche Forschungsgemeinschaft (DFG; SFB-TRR-58 projects C2 and Z2 to KD, AR, PP and JD; Grant KFO 125 to AR; DE357/4-1 to AR, AH, and JD; RE1632/5 to AR) and the BMBF (Panic-Net, to ALG, TK, AS, HUW, VA, AH, and JD; details see webpage <http://www.paniknetz.de/netzwerk.html>). The recruitment of the Max Planck panic sample in Munich was supported by the Max Planck Excellence Foundation. We gratefully acknowledge the skilful technical support by Anna Baffa.

CONFLICT OF INTEREST

The authors declare no conflict of interest related to this work.

REFERENCES

1. Reinscheid RK, Xu YL. Neuropeptide S as a novel arousal promoting peptide transmitter. *FEBS J* 2005; **272**: 5689-5693.
2. Sato S, Shintani Y, Miyajima N, Yoshimura K. Novel G-protein-coupled receptor protein and DNA thereof. *World Patent Application* 2002, WO02/31145 A1.
3. Xu YL, Reinscheid RK, Huitron-Resendiz S, Clark SD, Wang Z, Lin SH *et al.* Neuropeptide S: a neuropeptide promoting arousal and anxiolytic-like effects. *Neuron* 2004; **43**: 487-497.
4. Leonard SK, Dwyer JM, Sukoff Rizzo SJ, Platt B, Logue SF, Neal SJ *et al.* Pharmacology of neuropeptide S in mice: therapeutic relevance to anxiety disorders. *Psychopharmacology (Berl)* 2008; **197**: 601-611.
5. Rizzi A, Vergura R, Marzola G, Ruzza C, Guerrini R, Salvadori S *et al.* Neuropeptide S is a stimulatory anxiolytic agent: a behavioural study in mice. *Br J Pharmacol* 2008; **154**: 471-479.
6. Vitale G, Filaferro M, Ruggieri V, Pennella S, Frigeri C, Rizzi A *et al.* Anxiolytic-like effect of neuropeptide S in the rat defensive burying. *Peptides* 2008; **29**: 2286-2291.
7. Duangdao DM, Clark SD, Okamura N, Reinscheid RK. Behavioral phenotyping of Neuropeptide S receptor knockout mice. *Behav Brain Res* (in press).
8. Xu YL, Gall CM, Jackson VR, Civelli O, Reinscheid RK. Distribution of neuropeptide S receptor mRNA and neurochemical characteristics of neuropeptide S-expression neurons in the rat brain. *J Comp Neurology* 2007; **500**: 84-102.
9. Jüngling K, Seidenbecher T, Sosulina L, Lesting J, Sangha S, Clark SD *et al.* Neuropeptide S-mediated control of fear expression and extinction: role of intercalated GABAergic neurons in the amygdala. *Neuron* 2008; **59**: 298-310.

10. Meis S, Bergado-Acosta JR, Yanagawa Y, Obata K, Stork O, Munsch T. Identification of a neuropeptide S responsive circuitry shaping amygdala activity via the endopiriform nucleus. *PLoS One* 2008; **3**: e2695.
11. Pape HC, Jüngling K, Seidenbecher T, Lesting J, Reinscheid RK. Neuropeptide S: A transmitter system in the brain regulating fear and anxiety. *Neuropharmacology*. (in press).
12. LeDoux JE. Emotion circuits in the brain. *Annu Rev Neurosci* 2000; **23**: 155-184.
13. Phillips ML, Drevets WC, Rauch SL, Lane R. Neurobiology of emotion perception I: The neural basis of normal emotion perception. *Biol Psychiatry* 2003; **54**: 504-514.
14. Phillips ML, Drevets WC, Rauch SL, Lane R. Neurobiology of emotion perception II: Implications for major psychiatric disorders. *Biol Psychiatry* 2003; **54**: 515-528.
15. Etkin A, Klemenhagen KC, Dudman JT, Rogan MT, Hen R, Kandel ER *et al*. Individual differences in trait anxiety predict the response of the basolateral amygdala to unconsciously processed fearful faces. *Neuron* 2004; **44**: 1043-1055.
16. Javanmard M, Shlik J, Kennedy SH, Vaccarino FJ, Houle S, Bradwejn J. Neuroanatomic correlates of CCK-4-induced panic attacks in healthy humans: a comparison of two time points. *Biol Psychiatry* 1999; **45**: 872-882.
17. Pfleiderer B, Zinkirciran S, Arolt V, Heindel W, Deckert J, Domschke K. fMRI amygdala activation during a spontaneous panic attack in a patient with panic disorder. *World J Biol Psychiatry* 2007; **8**: 269-272.
18. Sakai Y, Kumano H, Nishikawa M, Sakano Y, Kaiya H, Imabayashi E *et al*. Cerebral glucose metabolism associated with a fear network in panic disorder. *Neuroreport* 2005; **16**: 927-931.
19. Charney DS, Heninger GR, Jatlow PI. Increased anxiogenic effects of caffeine in panic disorders. *Arch Gen Psychiatry* 1985; **42**: 233-243.

20. Lage R, Diéguez C, López M. Caffeine treatment regulates neuropeptide S system expression in the rat brain. *Neurosci Lett* 2006; **410**: 47-51.
21. Raiteri L, Luccini E, Romei C, Salvadori S, Calò G. Neuropeptide S selectively inhibits the release of 5-HT and noradrenaline from mouse frontal cortex nerve endings. *Br J Pharmacol* 2009; **157**: 474-481.
22. Crowe RR, Goedken R, Samuelson S, Wilson R, Nelson J, Noyes R Jr. Genomewide survey of panic disorder. *Am J Med Genet* 2001; **105**: 105-109.
23. Knowles JA, Fyer AJ, Vieland VJ, Weissman MM, Hodge SE, Heiman GA *et al.* Results of a genome-wide genetic screen for panic disorder. *Am J Med Genet* 1998; **81**: 139-147.
24. Logue MW, Vieland VJ, Goedken RJ, Crowe RR. Bayesian analysis of a previously published genome screen for panic disorder reveals new and compelling evidence for linkage to chromosome 7. *Am J Med Genet B Neuropsychiatr Genet* 2003; **121B**: 95-99.
25. Bernier V, Stocco R, Bogusky MJ, Joyce JG, Parachoniak C, Grenier K *et al.* Structure-function relationships in the neuropeptide S receptor: molecular consequences of the asthma-associated mutation N107I. *J Biol Chem* 2006; **281**: 24704-24712.
26. Reinscheid RK, Xu YL, Okamura N, Zeng J, Chung S, Pai R *et al.* Pharmacological characterization of human and murine neuropeptide s receptor variants. *J Pharmacol Exp Ther* 2005; **315**: 1338-1345.
27. Okamura N, Hashimoto K, Iyo M, Shimizu E, Dempfle A, Friedel S *et al.* Gender-specific association of a functional coding polymorphism in the Neuropeptide S receptor gene with panic disorder but not with schizophrenia or attention-deficit/hyperactivity disorder. *Prog Neuropsychopharmacol Biol Psychiatry* 2007; **31**: 1444-1448.
28. Mannuzza S, Fyer AJ, Klein DF, Endicott J. Schedule for affective disorders and schizophrenia–Lifetime version modified for the study of anxiety disorders (SADS-LA):

- Rationale and conceptual development. *J Psychiatr Res* 1986; **20**: 317-325.
29. Robins LN, Wing J, Wittchen HU, Helzer JE, Babor TF, Burke J *et al*. The Composite International Diagnostic Interview. An epidemiologic instrument suitable for use in conjunction with different diagnostic systems and in different cultures. *Arch Gen Psychiatry* 1988; **45**: 1069-1077.
 30. Wittchen HU. *SKID-I: strukturiertes klinisches Interview für DSM-IV, Achse I: Psychische Störungen*. Goettingen: Hogrefe. 1997.
 31. Gloster AT, Wittchen HU, Einsle F, Hofler M, Lang T, Helbig-Lang S *et al*. Mechanism of action in CBT (MAC): methods of a multi-center randomized controlled trial in 369 patients with panic disorder and agoraphobia. *Eur Arch Psychiatry Clin Neurosci* 2009; **259**: 155-166.
 32. Chambless DL, Caputo GC, Bright P, Gallagher R. Assessment of fear in agoraphobics: the body sensations questionnaire and the agoraphobic cognitions questionnaire. *J Consult Clin Psychol* 1984; **52**: 1090-1097.
 33. Ehlers, A., & Margraf, J. (1993). *Fragebogen zu körperbezogenen Ängsten, Kognitionen und Vermeidung (AKV)*. Weinheim: Beltz Test.
 34. Alpers GW, Pauli P. *Angstsensitivitäts-Index*. Würzburg: Julius-Maximilians-Universität. 2001.
 35. Reiss S, Peterson RA, Gursky DM, McNally RJ. Anxiety sensitivity, anxiety frequency and the prediction of fearfulness. *Behav Res Ther* 1986; **24**: 1-8.
 36. Fleiss J. *Statistical Methods for Rates and Proportions*. Wiley: New York, 1981.
 37. Lau J, Ioannidis JP, Schmid CH. Quantitative synthesis in systematic reviews. *Ann Intern Med* 1997; **127**: 820-826.
 38. Zintzaras E, Hadjigeorgiou GM. Association of paraoxonase 1 gene polymorphisms with risk of Parkinson's disease: a meta-analysis. *J Hum Genet* 2004; **49**: 474-481.

39. Mantel N, Haenszel W. Statistical aspects of the analysis of data from retrospective studies of disease. *J Natl Cancer Inst* 1959; **22**: 719-748.
40. DerSimonian R, Laird N. Meta-analysis in clinical trials. *Control Clin Trials* 1986; **7**: 177-188.
41. R-Development-Core-Team. R: A Language and Environment for Statistical Computing. 2.10.0 ed. *R Foundation for Statistical Computing*: Vienna, Austria, 2009.
42. Viechtbauer W. *metafor: Meta-Analysis Package for R*. 0.5-7, 2009.
43. Wilhelm FH, Peyk P. *ANSLAB 4.0: Autonomic nervous system laboratory*. <http://www.sprweb.org>, 2005.
44. Domschke K, Braun M, Ohrmann P, Suslow T, Kugel H, Bauer J *et al*. Association of the functional -1019C/G 5-HT1A polymorphism with prefrontal and amygdala activation measured with 3T fMRI in panic disorder. *Int J Neuropsychopharmacol* 2006; **9**: 349-355.
45. Domschke K, Ohrmann P, Braun M, Suslow T, Bauer J, Hohoff C *et al*. Influence of the catechol-O-methyltransferase val158met genotype on amygdala and orbitofrontal cortex emotional processing in panic disorder. *Psychiatry Res – Neuroimaging* 2008; **163**: 13-20.
46. Ekman P, Friesen WV. *Pictures of facial affect*. Consulting Psychologists Press, Palo Alto, CA, USA. 1976.
47. Tzourio-Mazoyer N, Landeau B, Papathanassiou D, Crivello F, Etard O, Delcroix N *et al*. Automated anatomical labeling of activations in SPM using a macroscopic anatomical parcellation of the MNI MRI single-subject brain. *NeuroImage* 2002; **15**: 273-289.
48. Brett M, Anton JL, Valabregue R, Poline JB. Region of interest analysis using an SPM toolbox. *NeuroImage* 2002; **16**: 497.

49. Okamura N, Reinscheid RK. Neuropeptide S: a novel modulator of stress and arousal. *Stress* 2007; **10**: 221-226
50. Deckert J, Catalano M, Syagailo YV, Bosi M, Okladnova O, Di Bella D, *et al.* Excess of high activity monoamine oxidase A gene promoter alleles in female patients with panic disorder. *Hum Mol Genet* 1999; **8**: 621-624.
51. Domschke K, Freitag CM, Kuhlenbaumer G, Schirmacher A, Sand P, Nyhuis P *et al.* Association of the functional V158M catechol-O-methyl-transferase polymorphism with panic disorder in women. *Int J Neuropsychopharmacol* 2004; **7**: 183-188.
52. Domschke K, Hohoff C, Jacob C, Maier W, Fritze J, Bandelow B *et al.* Chromosome 4q31-34 panic disorder risk locus: association of neuropeptide Y Y5 receptor variants. *Am J Med Genet B Neuropsychiatr Genet* 2008; **147B**: 510-516.
53. Domschke K, Deckert J, O'Donovan M, Glatt SJ. Meta-analysis of COMT val158met in panic disorder – ethnic heterogeneity and gender specificity. *Am J Med Genet (Neuropsychiatr Genet)* 2007; **144**: 667-673.
54. Blechert J, Michael T, Grossman P, Lajtman M, Wilhelm FH. Autonomic and respiratory characteristics of posttraumatic stress disorder and panic disorder. *Psychosom Med* 2007; **69**: 935-943.
55. Bouton ME, Mineka S, Barlow DH. A modern learning theory perspective on the etiology of panic disorder. *Psychol Rev* 2001; **108**: 4-32.
56. Clark DM. A cognitive approach to panic. *Behav Res Ther* 1986; **24**: 461-470.
57. Smith KL, Patterson M, Dhillon WS, Patel SR, Semjonous NM, Gardiner JV *et al.* Neuropeptide S stimulates the hypothalamo-pituitary-adrenal axis and inhibits food intake. *Endocrinology* 2006; **147**: 3510-3518.
58. Joiner TE Jr, Steer RA, Beck AT, Schmidt NB, Rudd MD, Catanzaro SJ. Physiological hyperarousal: construct validity of a central aspect of the tripartite model of depression

- and anxiety. *J Abnorm Psychol* 1999; **108**: 290-298.
59. Rabian B, Embry L, MacIntyre D. Behavioral validation of the Childhood Anxiety Sensitivity Index in children. *J Clin Child Psychol* 1999; **28**: 105-112.
 60. Sturges LV, Goetsch VL, Ridley J, Whittal M. Anxiety sensitivity and response to hyperventilation challenge: physiologic arousal, interoceptive acuity, and subjective distress. *J Anxiety Disord* 1998; **12**: 103-115.
 61. Richards JC, Bertram S. Anxiety sensitivity, state and trait anxiety, and perception of change in sympathetic nervous system arousal. *J Anxiety Disord* 2000; **14**: 413-427.
 62. Telch MJ, Silverman A, Schmidt NB. The relationship between anxiety sensitivity and perceived control in a caffeine challenge. *J Anx Disord* 1996; **10**: 21-35.
 63. Schmidt NB, Lerew DR, Jackson RJ. Prospective evaluation of anxiety sensitivity in the pathogenesis of panic: Replication and extension. *J Abnorm Psychol* 1999; **108**: 532-537.
 64. Onur E, Alkin T, Tural U. Panic disorder subtypes: further clinical differences. *Depress Anxiety* 2007; **24**: 479-486.
 65. Perna G, Romano P, Caldirola D, Cucchi M, Bellodi L. Anxiety sensitivity and 35% CO₂ reactivity in patients with panic disorder. *J Psychosom Res* 2003; **54**: 573-577.
 66. Brown M, Smits JA, Powers MB, Telch MJ. Differential sensitivity of the three ASI factors in predicting panic disorder patients' subjective and behavioral response to hyperventilation challenge. *J Anxiety Disord* 2003; **17**: 583-591.
 67. Nardi AE, Lopes FL, Valença AM, Nascimento I, Mezzasalma MA, Zin WA. Psychopathological description of hyperventilation-induced panic attacks: a comparison with spontaneous panic attacks. *Psychopathology* 2004; **37**: 29-35.
 68. Foot M, Koszycki D. Gender differences in anxiety-related traits in patients with panic disorder. *Depress Anxiety* 2004; **20**: 123-130.

69. Jang KL, Stein MB, Taylor S, Livesley WJ. Gender differences in the etiology of anxiety sensitivity: a twin study. *J Gend Specif Med* 1999; **2**: 39-44.
70. Pauli P, Marquardt C, Hartl L, Nutzinger DO, Hölzl R, Strian F. Anxiety induced by cardiac perceptions in patients with panic attacks: A field study. *Behav Res Ther* 1991; **29**: 137-145.
71. Asami T, Hayano F, Nakamura M, Yamasue H, Uehara K, Otsuka T *et al*. Anterior cingulate cortex volume reduction in patients with panic disorder. *Psychiatry Clin Neurosci* 2008; **62**: 322-330.
72. Uchida RR, Del-Ben CM, Busatto GF, Duran FL, Guimarães FS, Crippa JA, *et al*. Regional gray matter abnormalities in panic disorder: a voxel-based morphometry study. *Psychiatry Res* 2008; **163**: 21-29.
73. Pillay SS, Gruber SA, Rogowska J, Simpson N, Yurgelun-Todd DA. fMRI of fearful facial affect recognition in panic disorder: the cingulate gyrus-amygdala connection. *J Affect Disord* 2006; **94**: 173-181.
74. Bremner JD, Staib LH, Kaloupek D, Southwick SM, Soufer R, Charney DS. Neural correlates of exposure to traumatic pictures and sound in vietnam combat veterans with and without posttraumatic stress disorder: A positron emission tomography study. *Biol Psychiatry* 1999; **45**: 806–816.
75. Felmingham KL, Williams LM, Kemp AH, Rennie C, Gordon E, Bryant RA. Anterior cingulate activity to salient stimuli is modulated by autonomic arousal in posttraumatic stress disorder. *Psychiatry Res* 2009 **173**: 59-62.
76. Fredrikson M, Wik G, Annas P, Ericson K, Stone-Elander S. Functional neuroanatomy of visually elicited simple phobic fear: additional data and theoretical analysis. *Psychophysiology* 1995 **32**: 43-48.
77. Shin LM, Whalen PJ, Pitman RK, Bush G, Macklin ML, Lasko NB *et al*. An fMRI

- study of anterior cingulate function in posttraumatic stress disorder. *Biol Psychiatry* 2001; **50**: 932-942.
78. Davidson RJ. Anxiety and affective style: Role of the prefrontal cortex and amygdala. *Biol Psychiatry* 2002; **51**: 68-80.
 79. Steffens M, Lamina C, Illig T, Bettecken T, Vogler R, Entz P *et al*. SNP-based analysis of genetic substructure in the German population. *Hum Hered* 2006; **62**: 20-29.
 80. Murphy SE, Norbury R, O'Sullivan U, Cowen PJ, Harmer CJ. Effect of a single dose of citalopram on amygdala response to emotional faces. *Br J Psychiatry* 2000; **194**: 535-540.
 81. Harmer CJ, Mackay CE, Reid CB, Cowen PJ, Goodwin GM. Antidepressant drug treatment modifies the neural processing of nonconscious threat cues. *Biol Psychiatry* 2006; **59**: 816-820.
 82. Arce E, Simmons AN, Lovero KL, Stein MB, Paulus MP. Escitalopram effects on insula and amygdala BOLD activation during emotional processing. *Psychopharmacology (Berl)* 2008; **196**: 661-672.
 83. Yoon KL, Zinbarg RE. Threat is in the eye of the beholder: social anxiety and the interpretation of ambiguous facial expressions. *Behav Res Ther* 2007; **45**: 839-847.

Table 1

NPSR rs324981 A/T polymorphism and panic disorder: association studies

MMWBG sample										
Overall Sample	AA	AT	TT	Armitage Trend Test	AA	AT/TT	Chi2 Test	A	T	Chi2 Test
Patients N=489	134	229	126	OR=1.32 chi2=10.38 p=0.001*	134	355	OR=1.50 95%CI=1.14-1.96 chi2=8.56 p=0.003*	497	481	OR=1.35 95%CI=1.13-1.62 chi2=11.20 p=0.001*
Controls N=499	180	222	97		180	319		582	416	
Females										
Patients N=305	92	134	79	OR=1.34 chi2=7.13 p=0.008*	92	213	OR=1.45 95%CI =1.04-2.02 chi2=4.71 p=0.030*	318	292	OR=1.38 95%CI=1.10-1.73 chi2=7.95 p=0.005*
Controls N=312	120	135	57		120	192		375	249	
Males										
Patients N=184	42	95	47	OR=1.30 chi2=3.29 p=0.069	42	142	OR=1.60 95%CI =1.01-2.53 chi2=3.99 p=0.046*	179	189	OR=1.31 95%CI=0.98-1.75 chi2=3.34 p=0.068
Controls N=187	60	87	40		60	127		207	167	
MAC sample										
Overall Sample	AA	AT	TT	Armitage Trend Test	AA	AT/TT	Chi2 Test	A	T	Chi2 Test
Patients N=277	74	140	63	OR=1.20 chi2=2.16 p=0.141	74	203	OR=1.19 95%CI=0.83-1.73 chi2=0.89 p=0.347	288	266	OR=1.19 95%CI=0.94-1.51 chi2=2.09 p=0.148
Controls N=277	84	144	49		84	193		312	242	
Females										
Patients N=209	50	111	48	OR=1.36 chi2=4.80 p=0.028*	50	159	OR=1.57 95%CI =1.02-2.40 chi2=4.24 p=0.039*	211	207	OR=1.35 95%CI=1.03-1.77 chi2=4.63 p=0.031*
Controls N=209	69	104	36		69	140		242	176	

Males										
Patients N=68	24	29	15	OR=0.83 chi2=0.74 p=0.389	24	44	OR=0.51 95%CI =0.24-1.11 chi2=2.91 p=0.088	77	59	OR=0.81 95%CI=0.50-1.31 chi2=0.73 p=0.394
Controls N=68	15	40	13		15	53		70	66	

* significant p-value at significance level of <0.05

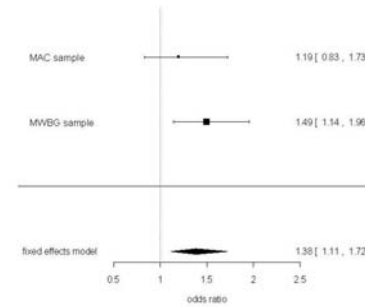
Figure 1

NPSR rs324981 and panic disorder: Forest Plot showing analyses of TT/TA vs. AA in the combined sample (A), females (B) and males (C)

A

Complete sample	Cases		Controls		Odds Ratio M-H, Fixed, 95% CI
	Events	Total	Events	Total	
MAC sample	203	277	193	277	1.19 [0.83, 1.73]
MMWBG sample	355	489	319	499	1.49 [1.14, 1.96]
Total (95% CI)		766		776	1.38 [1.11, 1.72]
Total events	558		512		

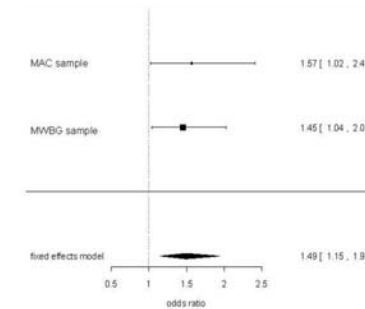
Heterogeneity: $\chi^2 = 0.9271$; $df = 1$ ($p = 0.336$)
 Test for overall effect: $Z = 2.92$ ($p = 0.004$)
 Cochran-Mantel-Haenszel-Test: $CMH = 8.20$; $df = 1$ ($p = 0.004$)



B

Female only subgroup	Cases		Controls		Odds Ratio M-H, Fixed, 95% CI
	Events	Total	Events	Total	
MAC sample	159	209	140	209	1.57 [1.02, 2.41]
MMWBG sample	213	305	192	312	1.45 [1.04, 2.02]
Total (95% CI)		514		521	1.49 [1.15, 1.94]
Total events	372		332		

Heterogeneity: $\chi^2 = 0.08$; $df = 1$ ($p = 0.774$)
 Test for overall effect: $Z = 2.97$ ($p = 0.003$)
 Cochran-Mantel-Haenszel-Test: $CMH = 8.46$; $df = 1$ ($p = 0.004$)



C

Male only subgroup	Cases		Controls		Odds Ratio M-H, Random, 95% CI
	Events	Total	Events	Total	
MAC sample	44	68	53	68	0.52 [0.24, 1.11]
MMWBG sample	142	184	127	187	1.60 [1.01, 2.53]
Total (95% CI)		252		255	0.95 [0.32, 2.85]
Total events	186		180		

Heterogeneity: $\tau^2 = 0.53$; $\chi^2 = 6.16$; $df = 1$ ($P = 0.0131$); $I^2 = 83.76\%$
 Test for overall effect: $Z = -0.093$ ($P = 0.926$)

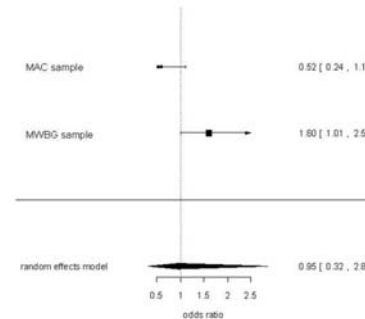
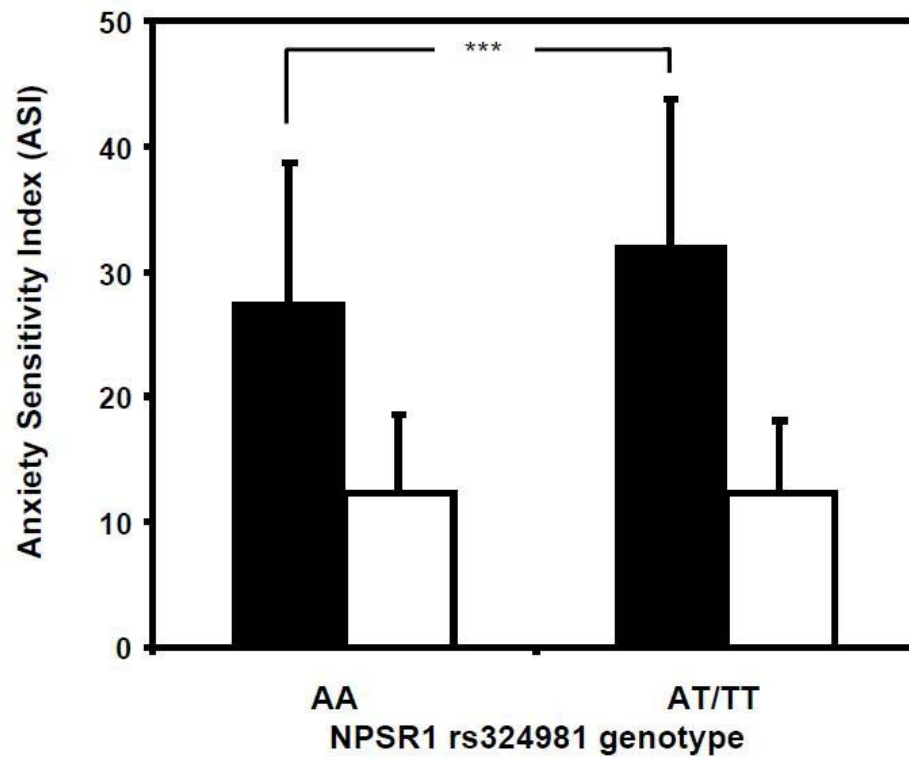


Figure 2

NPSR rs324981 A/T polymorphism and anxiety sensitivity

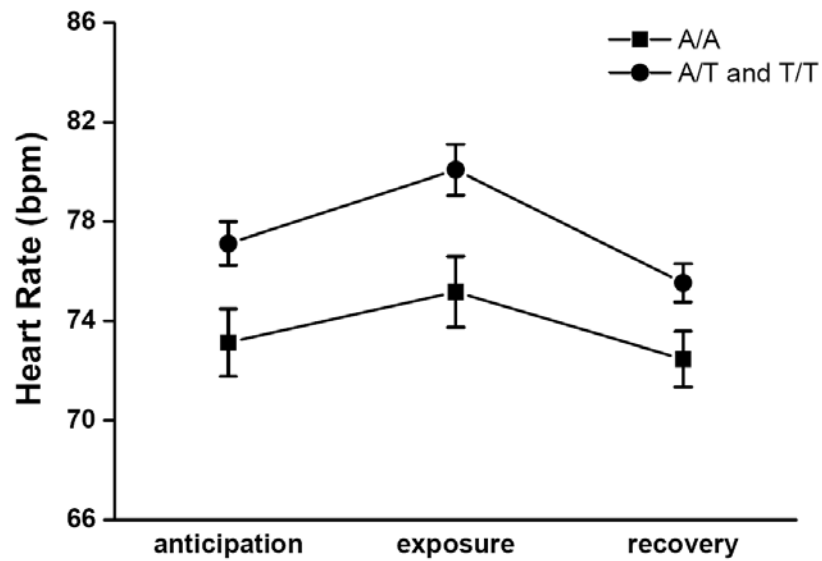


Closed bars, patients; open bars, controls; *** = significant at $p=0.002$

Figure 3

Mean heart rate (upper panel; A) and mean symptom intensity (lower panel; B) during anticipation, exposure and recovery in homozygous A allele carriers and T allele carriers, respectively

(A)



(B)

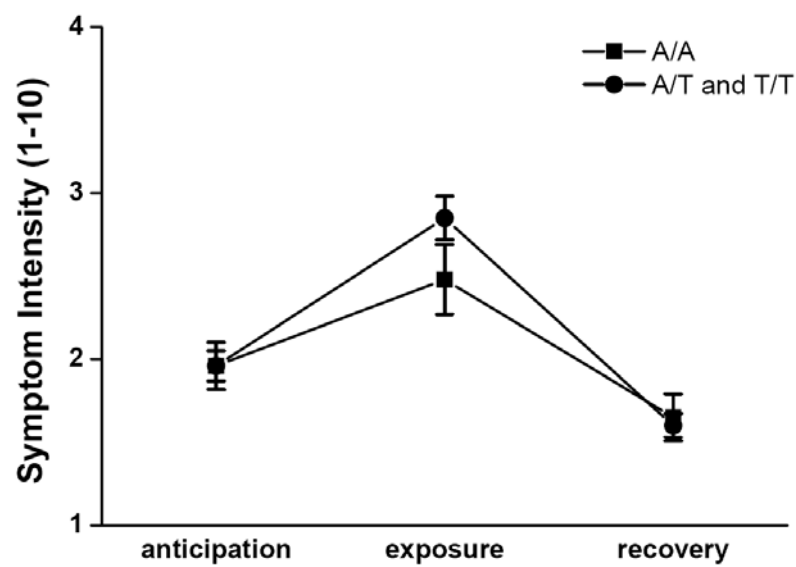
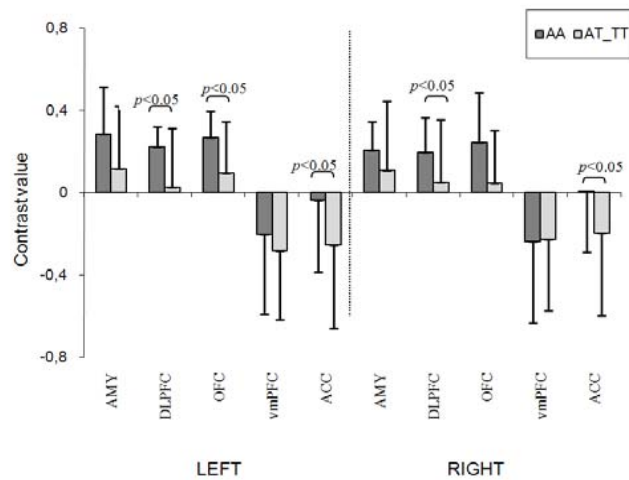


Figure 4

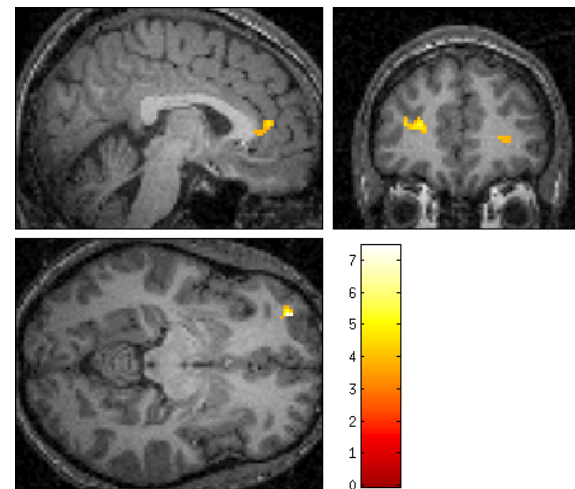
NPSR rs324981 A/T (Asn¹⁰⁷Ile) effects on brain activation during processing of fearful faces (vs. no face)

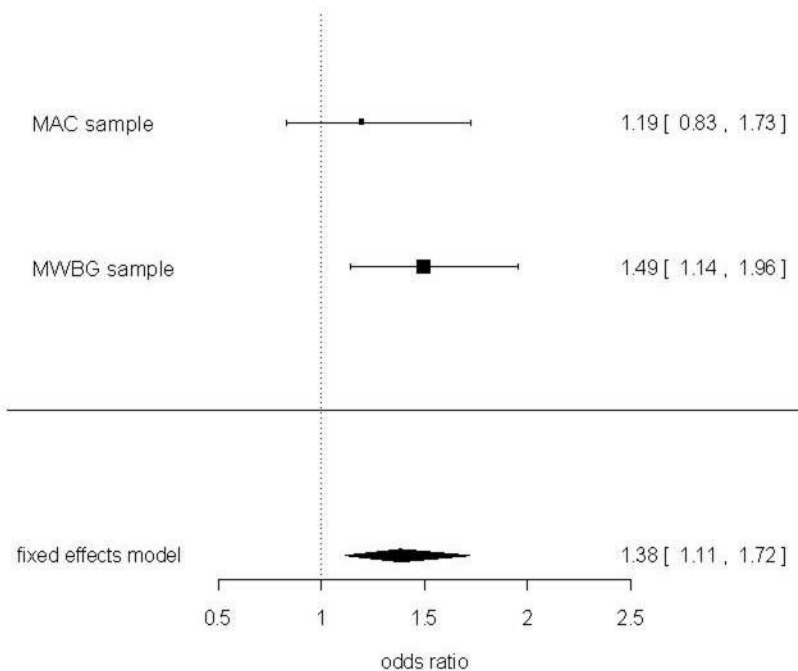
(A) Contrast values analyzed by MarsBaR; (B) ROI analyses of the same regions using the Wake Forest University Pick Atlas (patients homozygous for the A allele vs. patients with AT and TT genotypes at $p < 0.001$), AMY: amygdala, DLPFC: dorsolateral prefrontal cortex, OFC: orbitofrontal cortex, vmPFC: ventromedial prefrontal cortex, ACC: anterior cingulate cortex

(A)



(B)





MAC sample 1.57 [1.02 , 2.41]

MVBG sample 1.45 [1.04 , 2.02]

fixed effects model 1.49 [1.15 , 1.94]

0.5 1 1.5 2 2.5

odds ratio

MAC sample



0.52 [0.24 , 1.11]

MWBG sample



1.60 [1.01 , 2.53]

random effects model



0.95 [0.32 , 2.85]

0.5 1 1.5 2 2.5

odds ratio

