



**HAL**  
open science

## Characteristics of HIV-1 Non-B Subtype Infections in Northwest Poland

Milosz Parczewski, Magdalena Leszczyszyn-Pynka, Dorota Bander, Anna Urbańska, Grzegorz Stańczak, Anna Boroń-Kaczmarska

► **To cite this version:**

Milosz Parczewski, Magdalena Leszczyszyn-Pynka, Dorota Bander, Anna Urbańska, Grzegorz Stańczak, et al. Characteristics of HIV-1 Non-B Subtype Infections in Northwest Poland. *Journal of Medical Virology*, 2010, 82 (8), pp.1306. 10.1002/jmv.21797 . hal-00552410

**HAL Id: hal-00552410**

**<https://hal.science/hal-00552410>**

Submitted on 6 Jan 2011

**HAL** is a multi-disciplinary open access archive for the deposit and dissemination of scientific research documents, whether they are published or not. The documents may come from teaching and research institutions in France or abroad, or from public or private research centers.

L'archive ouverte pluridisciplinaire **HAL**, est destinée au dépôt et à la diffusion de documents scientifiques de niveau recherche, publiés ou non, émanant des établissements d'enseignement et de recherche français ou étrangers, des laboratoires publics ou privés.

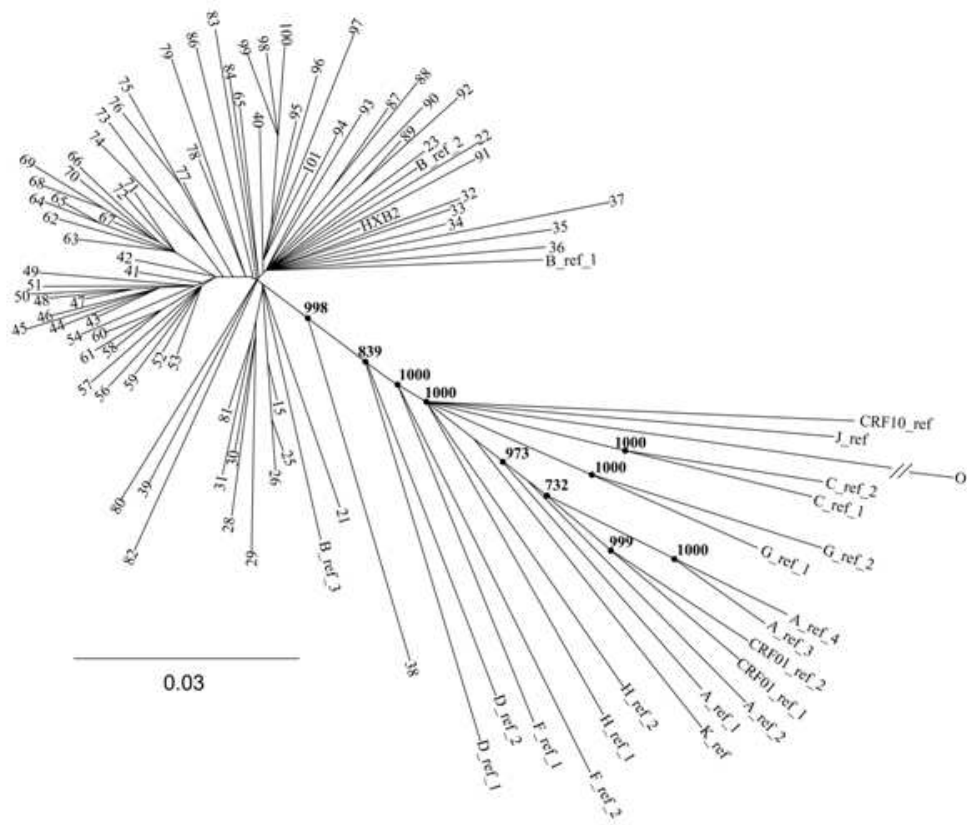


## Characteristics of HIV-1 Non-B Subtype Infections in Northwest Poland

Journal:	<i>Journal of Medical Virology</i>
Manuscript ID:	JMV-09-1596.R1
Wiley - Manuscript type:	Research Article
Date Submitted by the Author:	24-Feb-2010
Complete List of Authors:	Parczewski, Milosz; Pomeranian Medical University, Department of Infectious Diseases Leszczyszyn-Pynka, Magdalena; Pomeranian Medical University, Department of Infectious Diseases Bander, Dorota; Pomeranian Medical University, Department of Infectious Diseases Urbańska, Anna; Pomeranian Medical University, Department of Infectious Diseases Stańczak, Grzegorz; Hospital for Infectious Diseases, Molecular Diagnostics Laboratory, Boroń-Kaczmarska, Anna; Pomeranian Medical University, Department of Infectious Diseases
Keywords:	Subtype D, HIV subtypes, phylogenesis, HIV transmission, Poland



1  
2  
3  
4  
5  
6  
7  
8  
9  
10  
11  
12  
13  
14  
15  
16  
17  
18  
19  
20  
21  
22  
23  
24  
25  
26  
27  
28  
29  
30  
31  
32  
33  
34  
35  
36  
37  
38  
39  
40  
41  
42  
43  
44  
45  
46  
47  
48  
49  
50  
51  
52  
53  
54  
55  
56  
57  
58  
59  
60

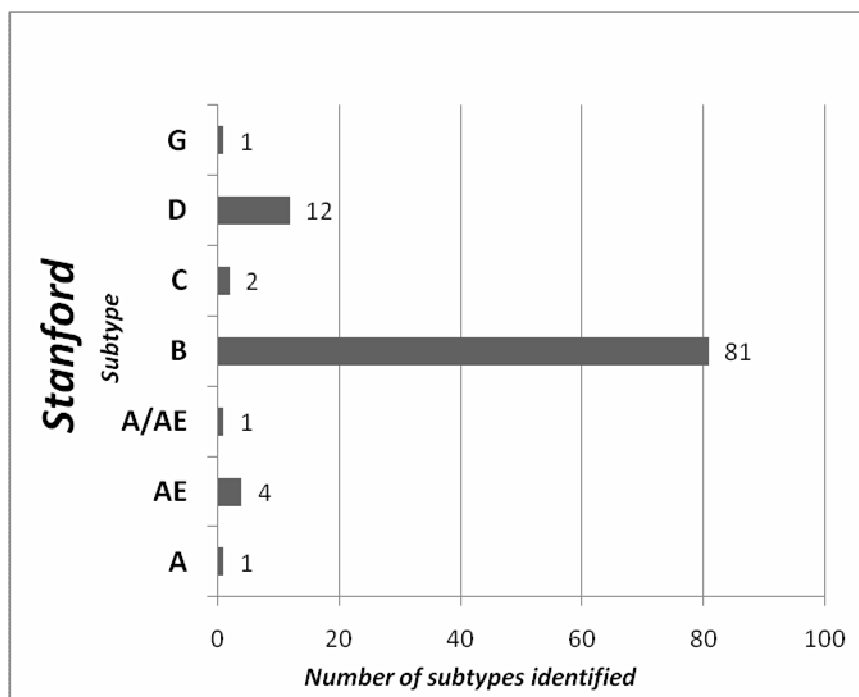


Neighbor-joining tree showing phylogenetic relationships of subtype B isolates to the HIV-1 M group reference strains  
25x21mm (600 x 600 DPI)

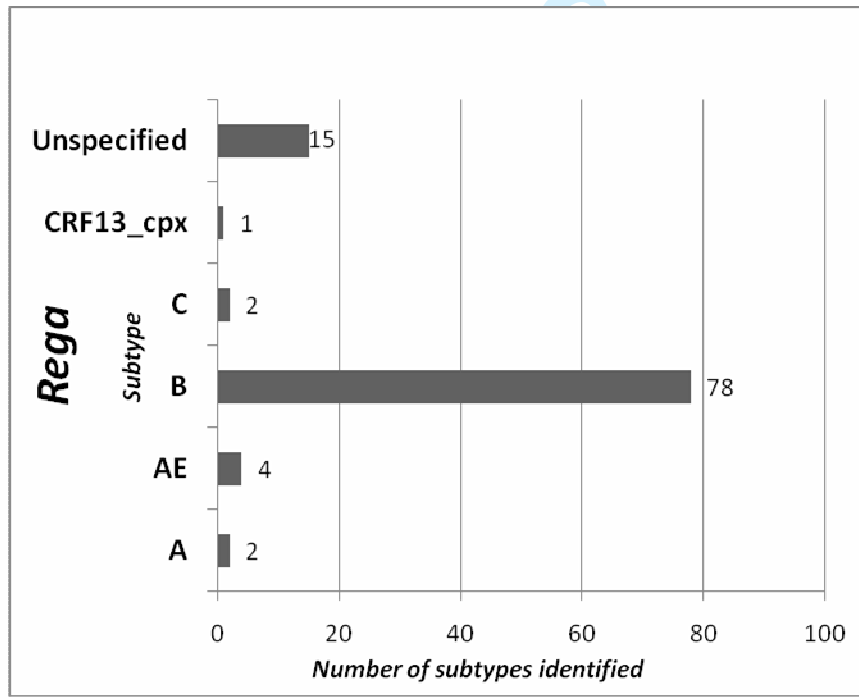


1  
2  
3  
4  
5  
6  
7  
8  
9  
10  
11  
12  
13  
14  
15  
16  
17  
18  
19  
20  
21  
22  
23  
24  
25  
26  
27  
28  
29  
30  
31  
32  
33  
34  
35  
36  
37  
38  
39  
40  
41  
42  
43  
44  
45  
46  
47  
48  
49  
50  
51  
52  
53  
54  
55  
56  
57  
58  
59  
60

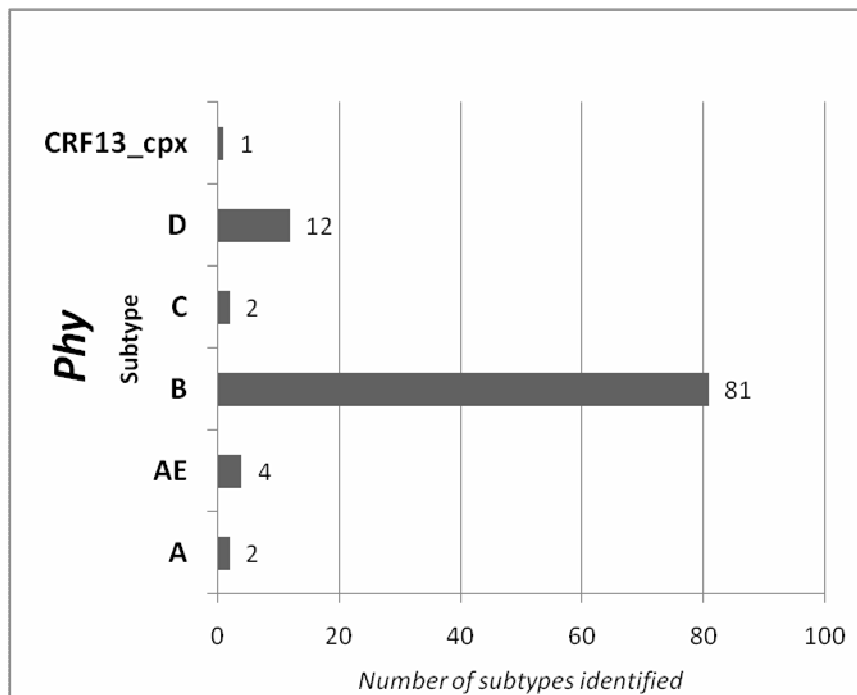
Fig 2



A



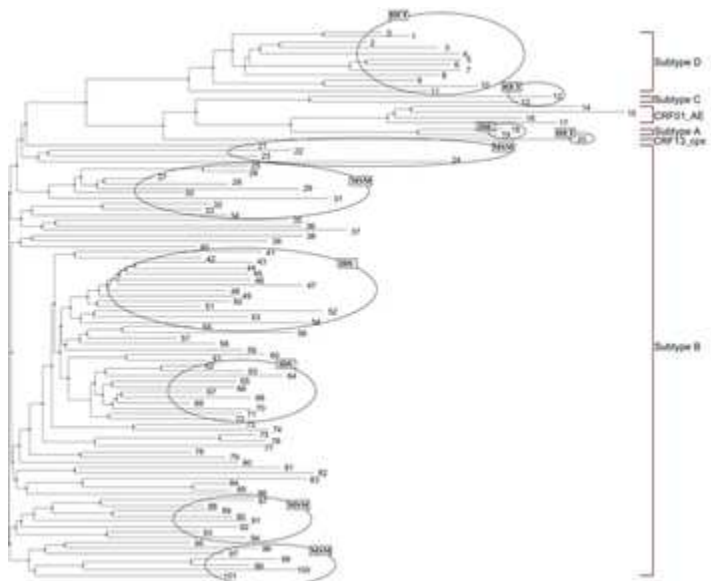
B



C

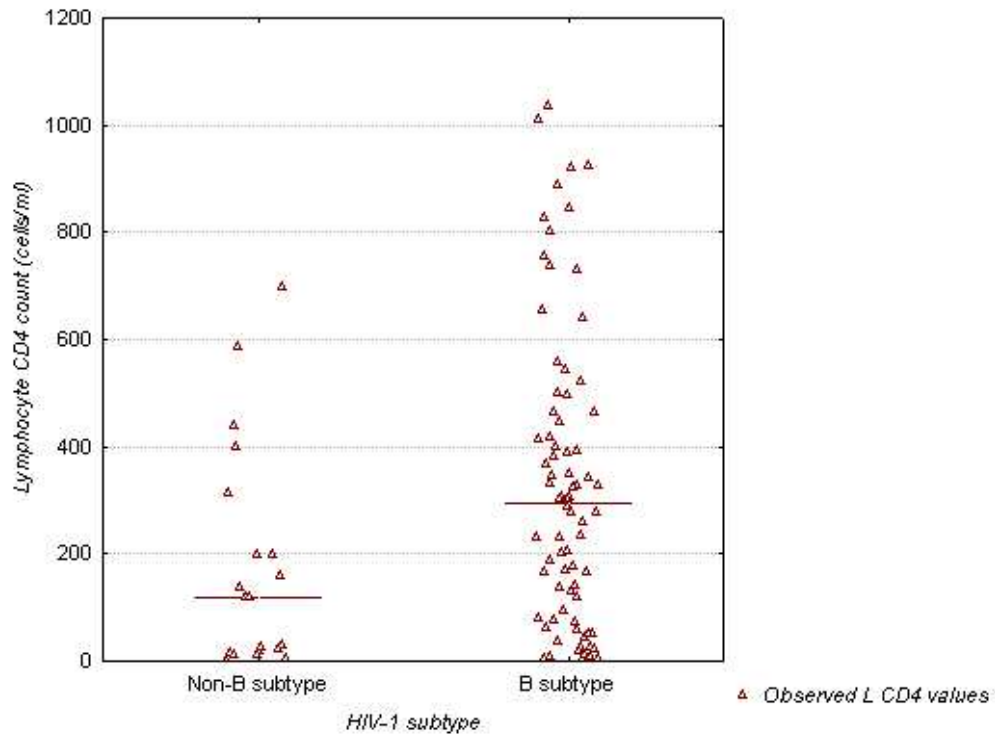
Peer Review

1  
2  
3  
4  
5  
6  
7  
8  
9  
10  
11  
12  
13  
14  
15  
16  
17  
18  
19  
20  
21  
22  
23  
24  
25  
26  
27  
28  
29  
30  
31  
32  
33  
34  
35  
36  
37  
38  
39  
40  
41  
42  
43  
44  
45  
46  
47  
48  
49  
50  
51  
52  
53  
54  
55  
56  
57  
58  
59  
60



Phylogenetic tree reconstruction  
15x12mm (600 x 600 DPI)

er Review



Baseline CD4+ lymphocyte counts in the analysed groups.  
137x103mm (96 x 96 DPI)

Review

1  
2  
3  
4  
5  
6  
7  
8  
9  
10  
11  
12  
13  
14  
15  
16  
17  
18  
19  
20  
21  
22  
23  
24  
25  
26  
27  
28  
29  
30  
31  
32  
33  
34  
35  
36  
37  
38  
39  
40  
41  
42  
43  
44  
45  
46  
47  
48  
49  
50  
51  
52  
53  
54  
55  
56  
57  
58  
59  
60





1  
2  
3  
4 1 **Title:** Characteristics of HIV-1 Non-B Subtype Infections in Northwest Poland.  
5  
6  
7 2

8  
9  
10 3 **Authors:** Miłosz Parczewski<sup>1</sup>, Magdalena Leszczyszyn-Pynka<sup>1</sup>, Dorota Bander<sup>1</sup>, Anna Urbańska<sup>1</sup>,  
11 4 Grzegorz Stańczak<sup>2</sup>, Anna Boroń-Kaczmarek<sup>1</sup>.

12  
13  
14 5 <sup>1</sup>Department of Infectious Diseases and Hepatology, Pomeranian Medical University, Szczecin, Poland

15  
16 6 <sup>2</sup> Molecular Diagnostics Laboratory, Hospital for Infectious Diseases, Warsaw, Poland  
17  
18  
19 7

20  
21  
22 8 **Running head:** HIV-1 Non-B subtypes in Northwest Poland  
23  
24 9

25  
26  
27 10 **Correspondence to:**

28  
29 11 Miłosz Parczewski M.D. Ph.D.

30  
31  
32 12 Pomeranian Medical University,

33  
34 13 Department of Infectious Diseases and Hepatology,

35  
36  
37 14 Arkońska 4

38  
39 15 71-455 Szczecin, Poland

40  
41  
42 16 Tel. 0048918139456, Fax. 0048914316242

43  
44  
45 17 e-mail: [mparczewski@yahoo.co.uk](mailto:mparczewski@yahoo.co.uk)  
46  
47  
48  
49  
50  
51  
52  
53  
54  
55  
56  
57  
58  
59  
60

**Abstract**

The number non-B subtype HIV-1 infections in Europe have been increasing even though major regional differences have been observed. This trend was investigated in northwestern Poland using sequence and epidemiological data from a cohort of 102 HIV-1-infected patients from Szczecin, Poland. HIV-1 subtypes were defined by phylogenetic analysis of viral reverse transcriptase- and protease-partial coding regions and results were compared with online subtyping by Stanford and REGA tools. Subtype analysis using on-line subtyping methods produced varying results if compared to phylogenesis, with concordant variant assignment obtained for 98% (100/102) of sequences by Stanford and 85% (87/102) by REGA. In the population studied, non-B subtype infections comprised 21% of the infections and consisted of subtype D (57%, n=12), CRF01\_AE (19%, n=4), A and C clades (9.5%, n=2) and the CRF13\_cpx recombinant isolate (4.8%, n=1). Patients carrying non-B subtypes were predominantly heterosexuals with high percentage (57%) of women observed in the group. All HIV-1 non-B women were Caucasian with majority (83%) of infections acquired in Poland, however among 12 travelers included in the study a higher proportion of non-B infections was noted (50%, p=0.01). Moreover, lower baseline lymphocyte CD4 counts (p=0.01), higher baseline HIV-1 viraemia (p=0.08) and a more advanced stage of the disease (p=0.03) were observed among individuals infected with non-B subtypes. The data indicated that the proportion of HIV-1 non-B subtype infections was higher than previously reported in Poland consisting of a high subtype D prevalence. Furthermore, subtype D transmission occurred primarily between heterosexual Caucasian individuals from this region.

**Key Words:** HIV subtype D; non-B subtypes; HIV transmission, phylogenetic analysis, Poland

## INTRODUCTION

The transmission of major (M) and non-major (N) groups of Human Immunodeficiency Virus (HIV) from chimpanzees, along with outlier (O) group viruses of likely gorilla ancestry, were the initial steps in the evolution of the human HIV epidemic [Keele et al., 2006, Van Heuverswyn F et al. 2006]. Furthermore, high reverse transcriptase error rates have resulted in additional diversification into different HIV strains [Rambaut et al., 2004]. Sequence-based research has identified a range of subtypes (clades) and recombinant forms within the most common HIV-1 M group. Subtype C is the most common clade worldwide (approximately 50% of all HIV-1 clades) and is found predominately in Sub-Saharan Africa and the Indian subcontinent whereas clades A, D and CRF01\_AE are observed less frequently (12%, 6.5%, and 2.5%, respectively). Circulating recombinant forms (CRFs) including CRF01\_AE and CRF02\_AG have been reported mainly in East-Asia and West Africa, while novel recombinants continue to be identified worldwide [Taylor, Hammer, 2008]. In present time Europe, subtype B remains the most common clade identified, particularly among Caucasians, however, subtype B represents only 10% of global HIV-1 infections [Paraskevis et al., 2009]. In addition, injection drug use and male homosexual contacts are commonly associated with subtype B infections. occur . In contrast, transmission of non-B subtypes is most common between heterosexuals [Kantor et al., 2005] and in Poland, this pattern is similar with respect to subtype B infections predominating in injection drug users and homosexuals [Chaix et al., 2003, Stańczak et al., 2007]. However, the number of non-B subtype infections among Caucasians has been increasing. The current reported prevalence of non-B subtype infections in Poland is 11.2% with more than half of these belonging to the C and D subtypes and the CRF03\_AB; CRF05\_DF and CRF01\_AE recombinant clades [Stańczak et al., 2007]. Although most antiretroviral studies and observational cohorts have analyzed populations comprised predominantly of clade B-infected individuals, others have indicated that virological and immunological treatment responses are similar regardless of the subtype [Bocket et al., 2005; Holguin et al., 2006].

1  
2  
3  
4  
5 65 The city of Szczecin, located in northwestern Poland, has an HIV-1 incidence of 0.35/100,000  
6  
7 66 compared to an incidence rate of 0.47/100,000 nationwide [Czarkowski et al., 2007]. In this region,  
8  
9 67 intravenous drug use used to be the predominant HIV transmission route, however, sexually  
10  
11 68 transmitted infections between Caucasians now predominate (immigrants comprise less than 1% of  
12  
13 69 observed HIV infection cases). Since the port of Szczecin is strategically situated on the Polish-  
14  
15 70 German border, HIV infections transmitted from sailors and young homosexual males travelling to  
16  
17 71 Germany are common (internal center data) and HIV infections in Poland (and in the region) are  
18  
19 72 more prevalent among males. However, the number of infected women among newly diagnosed  
20  
21 73 subjects has been increasing recently (from 21% in 2006 to 24% in 2008) (National Institute of Public  
22  
23 74 Health, data available on-line [www.pzh.gov.pl/oldpage/epimeld/index\\_p.html](http://www.pzh.gov.pl/oldpage/epimeld/index_p.html)).  
24  
25  
26  
27

28 75 In this study, HIV-1 transmission data is correlated with demographic and epidemiologic data  
29  
30 76 from a northwestern Polish cohort. HIV isolates obtained from patient plasma samples were  
31  
32 77 subtyped and subjected to phylogenetic reconstruction analyses based on partial protease and  
33  
34 78 reverse transcriptase sequences. This analysis revealed a larger than expected number of non-B  
35  
36 79 subtype isolates, suggesting a change in the epidemiology of HIV infection. Awareness of the  
37  
38 80 infecting strains in respective populations will be critical for the administration of appropriate  
39  
40 81 antiviral interventions.  
41  
42  
43  
44  
45  
46  
47  
48  
49  
50  
51  
52  
53  
54  
55  
56  
57  
58  
59  
60

## METHODS

### Population

This study analyzed HIV-1 sequence data from 102 patients (73 male, 29 female) that were followed-up routinely at the Department of Infectious Diseases and Hepatology, Pomeranian Medical University, Szczecin, Poland. With the exception of one patient, all were Caucasian and acquired their infections sexually (n=68) or by injection drug use (n=34). HIV sequencing was performed in patients failing antiretroviral regimens (n=37) and in patients with newly diagnosed infections as a means of identifying new subtype strains or newly transmitted drug resistant strains (n=65). The mean age of the patients was 38.7 years (median 36±9.1, range 23-67 years).

### Sample Collection and Analysis

Plasma samples collected from patients between 1996-2009 were stored at -80°C and analyzed retrospectively. HIV RNA extraction (with subsequent sequencing of the protease and reverse transcriptase genes) was performed using a 2.8 Viroseq HIV-1 Genotyping System (Abbott Molecular, Illinois, USA) and the Trugene Genotyping system (Bayer HealthCare, Tarrytown, USA) according to the manufacturer's protocols. Fasta sequences (*pol* sequence lengths of 1297-1302 base pairs [bp]) obtained in the process were used in this study. All sequences were aligned using the Clustal X2.0.10 software ([www.clustal.org](http://www.clustal.org)) with manual editing by Bioedit (version 7.0.5., Ibis Therapeutics, Carlsbad, USA). Phylogenetic analyses were performed using the Phylip Package version 3.69 (University of Washington, Department of Genome Sciences, USA) with evolutionary distances estimated using DNADIST (Kimura two-parameter method) and bootstrapping carried out using SEQBOOT (1000 replicates). Phylogenetic reconstructions were performed by NEIGHBOR (neighbor-joining method) for tree construction. Trees were visualized with TreeView (version 1.6.6, University of Glasgow, UK) or Tree Figure Drawing Tool (version 1.2.2, University of Edinburgh, UK).

1  
2  
3  
4  
5 108 For phylogeny-based subtype determination, a selection of reference sequences listed in the HIV  
6  
7 109 Sequence Compendium 2009 (Los Alamos National Laboratory Los Alamos, U.S.A.  
8  
9 110 <http://www.hiv.lanl.gov>, two sequences for each subtype and at least one for each CRF), as well as  
10  
11 111 sequences from Central Europe for two common subtypes (gen-bank IDs AF34733, DQ823362  
12  
13 112 (subtype B), DQ823357, EF545108 (Subtype A)) were used.

14  
15  
16 113 Tree topology analysis was used to assign subtypes based on a high level of bootstrap  
17  
18 114 support (>700) for each subtype or CRFs examined. Additionally, subtype determinations were  
19  
20 115 performed using two rapid on-line tools: the REGA genotyping 2.0 tool  
21  
22 116 (<http://bioafrica.mrc.ac.za/rega-genotype/html/subtypinghiv.html>) and the Stanford HIV database  
23  
24 117 (<http://hivdb.stanford.edu>) for verification and comparison.  
25  
26  
27  
28  
29

118

119

### Statistics

30  
31  
32 120 Statistical analyses for nominal variables were performed using Chi-square and Fisher's exact  
33  
34 121 tests for small groups using EPI6 Statcalc software (Department of Mathematics, University of  
35  
36 122 Louisiana-Lafayette, Lafayette, LA, USA); for nominal variables, the U-Mann Whitney test was  
37  
38 123 performed using Statistica software (Statsoft, Tulsa, USA). P-values of <0.05 were considered  
39  
40 124 significant; with values in the range of 0.1-0.051 regarded as borderline statistically significant.  
41  
42  
43  
44  
45  
46  
47  
48  
49  
50  
51  
52  
53  
54  
55  
56  
57  
58  
59  
60

## RESULTS

Using phylogeny-based subtyping methods it was possible to assign an HIV subtype to each isolate examined with bootstrap support of 100%. Two phylogenetic trees, drawn separately for B and non-B subtypes are shown (Fig. 1 A,B). Subtype B infections were the most common (n=81; 79%), although the prevalence of non-B strains was 21% (21/102). Of these non-B strain infections, 57% (n=12) were subtype D, 19% were CRF01\_AE (n=4), 9.5% were A and C clade infections (n=2); 4.8% were of the CRF13\_cpx recombinant variant (n=1). Subtype analysis results using on-line subtyping methods produced varying results. The REGA genotyping tool was unable to assign a subtype to all subtype D and three subtype B isolates. On the other hand, analysis using the Stanford HIV database identified one case to be infected with subtype A/CRF01\_AE recombinant (protease– clade A, reverse transcriptase - CRF01\_AE) that were assigned as subtype A by both phylogenetic analysis and REGA while a strain classified as CRF13\_cpx was classified as subtype G by the Stanford database (Figure 2).

For each patient examined, the route of transmission was identified: 33% (34/102) resulted from male homosexual contacts, 31% (32/102) by injection drug use and 28% (29/102) were heterosexual transmissions. In 7% (7/102) of cases it was not possible to define equivocally the transmission route (patients reported both unprotected heterosexual and homosexual sexual contacts or unprotected sexual contacts combined with injection drug use), therefore a mixed route of infection was assigned.

Clustering of sequences with concordant transmission routes was noted as indicated in Figure 3. Infections with clade C, D or CRF13\_cpx variants were acquired exclusively through heterosexual contact while subtype A- or CRF01\_AE-infected patients acquired their infections as a consequence of injection drug use. Two patients presented with a variant CRF01\_AE infection acquired through heterosexual contact (from Cambodia and Germany). A significant number of patients infected as a consequence of heterosexual exposure were infected primarily with non-B subtypes (versus B subtype-infected patients) ( $p < 0.01$ , 95% CI [0.04-0.16], OR: 0.04) with a significantly higher number of women presenting with this type of infection ( $p = 0.01$ , 95%CI [0.06-0.06],



1  
2  
3  
4 151 OR: 0.2). All women with non-B subtype infections were Caucasian and the majority (83%) of  
5  
6 152 infections were acquired in Poland. Of these, only two reported commercial sex work with the  
7  
8  
9 153 remaining admitting to casual, infrequent heterosexual contacts. A total of 12 cases reported risky  
10  
11 154 sexual behavior outside of Poland; four patients were professional sailors reporting exposure in  
12  
13 155 Germany, one in the UK, Cambodia and Vietnam, respectively. Among travelers, non-B subtype  
14  
15 156 infections (four CRF01\_ AE cases, one from each clade D and CRF13\_cpx cases) were statistically  
16  
17 157 greater (n=6, 50%, p=0.01, Fisher's exact test) compared to the rest of the cohort.

18  
19  
20 158 Most of HIV-diagnosed patients in the study (61/102, 59.8%) were either symptomatic or in  
21  
22  
23 159 the AIDS stage. Baseline lymphocyte CD4 counts below 350 cells/ $\mu$ l were noted in 64 (62%)  
24  
25 160 individuals. Significantly lower baseline lymphocyte CD4 counts (p=0.01), higher baseline HIV-1  
26  
27 161 viremia (borderline statistical significance, p=0.08) and a more advanced stage of the disease (AIDS  
28  
29 162 cases notably more common, p=0.03) were observed among individuals infected with non-B  
30  
31 163 subtypes. Patient characteristics are described in Table I, with distribution of lymphocyte CD4 counts  
32  
33 164 and viral load levels among subtype B and non-subtype B groups presented in Figures 4 and 5.  
34  
35  
36  
37  
38  
39  
40  
41  
42  
43  
44  
45  
46  
47  
48  
49  
50  
51  
52  
53  
54  
55  
56  
57  
58  
59  
60

1  
2  
3  
4  
5 165  
6  
7 166  
8  
9 167  
10  
11 168  
12  
13  
14 169  
15  
16 170  
17  
18 171  
19  
20 172  
21  
22 173  
23  
24 174  
25  
26 175  
27  
28 176  
29  
30 177  
31  
32 178  
33  
34 179  
35  
36 180  
37  
38 181  
39  
40 182  
41  
42 183  
43  
44 184  
45  
46 185  
47  
48 186  
49  
50 187  
51  
52 188  
53  
54 189  
55  
56 190  
57  
58  
59  
60

## DISCUSSION

This study assessed the HIV subtypes present in a cohort of patients from Szczecin, Poland. HIV strains were subtyped based on protease and reverse transcriptase sequences using three distinct typing tools. Subtyping results from the two on-line rapid tools (REGA genotyping 2.0 and the Stanford HIV database) were compared with phylogenetic analysis. This comparison revealed that the REGA tool was not able to classify equivocally subtype D strains in all cases, however, it classified correctly the CRF13\_cpx recombinant strain assigned to subtype G by the Stanford database. The subtyping analysis carried out using REGA matched the A, CRF01\_AE and C clades in accordance with the phylogenetic analysis results, while the Stanford analysis inappropriately classified one subtype A sample as an A/CRF01\_AE recombinant (Figure 2A-C). However, the Stanford database tool correctly assigned all B clade samples (100%) compared to the 96.2% rate observed using the REGA tool. The failure to identify subtype B strains in three cases using the REGA tool was probably due to shorter sequence lengths. As described previously [Holguín et al., 2008], also in this study misclassification of some non-B subtypes was observed when using the rapid on-line tools, which reinforces the need to use phylogenetic analyses to confirm subtyping results.

To date, the HIV subtype distribution in Poland was similar to that reported for Western Europe, with subtype B strains being the cause of the majority of infections [Hemelaar et al., 2006, Stańczak et al., 2006]. However these data were based on data from rapid subtyping tools in the absence of phylogenetic analyses. In the population described in this study, the number of non-B subtypes was higher than the published national average reported between 1996-2004 (21% versus 11.2%) [Stańczak et al., 2006]. Of the non-B variants identified in this study, subtype D was the most common (57%). Furthermore, among the patients examined, there were a surprisingly higher percentage of C and D clades among Polish women infected as a consequence of heterosexual exposures (75%).

1  
2  
3  
4 191 Until this study was carried out, it was believed that non-B transmissions between heterosexual  
5  
6 192 Caucasians occurred only infrequently [Böni et al., 1999; Ramirez-Piedad et al., 2009, Thomson et al.,  
7  
8  
9 193 2007], however, the number of new infections resulting from non-B clades is increasing in this  
10  
11 194 population [Holguín et al., 2008]. In this study all but one infection with subtype D was related to  
12  
13 195 heterosexual transmission among Caucasians and such spread of this non-B clade strain has not  
14  
15  
16 196 been reported to date. The data presented in this report also suggest that the number of HIV  
17  
18 197 infections resulting from non-B variants in Poland is increasing. Although the HIV epidemic initially  
19  
20 198 was a result of subtype B infections, the rise in cases resulting from non-B variants in the recent years  
21  
22 199 reflects a change in the epidemiology of this disease [Stańczak et al. 2006] and this trend parallels  
23  
24  
25 200 what has been observed in Western Europe [Geretii 2006].  
26

27  
28 201 Non-B subtypes have also been identified across Europe with variable prevalence, however,  
29  
30 202 European data on non-B subtype cases resulting from sexual contact are commonly seen in  
31  
32 203 populations with a high immigrant population or among individuals who are epidemiologically linked  
33  
34 204 [Böni et al., 1999]. For example, in Germany, the circulating recombinant forms, CRF02\_AG and  
35  
36 205 CRF01\_AE, are most commonly observed in the context of smaller subtype C and D infections [Sagir  
37  
38 206 et al., 2007]. In the UK, the highest non-B prevalence was observed among black African and black  
39  
40 207 Caribbean patients [Hemelaar et al., 2006], while in Spain, a high frequency of subtype G was  
41  
42 208 reported [Holguín, Alvarez, Soriano, 2002].  
43  
44  
45

46 209 The high frequency of non-B subtypes observed in the studied cohort might be related to the  
47  
48 210 fact that the study center was located in a major port city. Sailors traveling the world might have  
49  
50 211 imported non-B variants which spread in the local population. Indeed, the CRF13\_cpx variant was  
51  
52 212 identified in a male sailor traveling from Africa who reported heterosexual contacts in this continent,  
53  
54 213 however, only in one subtype D case exposure outside Poland was reported, while review of the  
55  
56 214 remaining medical records of subtype D patients revealed that the infections were acquired in  
57  
58 215 northwestern Poland. The surprising dominance of non-clade B infections (17/21, 81%) in  
59  
60 216 heterosexuals, particularly women (12/21, 57%) was a novel finding. The majority of the women in

1  
2  
3  
4  
5 217 this group never admitted to sexual promiscuity (19/21) and HIV diagnosis was unexpected for both  
6  
7 218 patients and clinicians. Their unknown infection status combined with low social awareness of HIV  
8  
9 219 risk factors in Poland [Izdebski 2003] and infrequent HIV testing among heterosexual individuals  
10  
11 220 might explain the high number of HIV patients observed in this population. As a result, there were a  
12  
13 221 large proportion of symptomatic/AIDS patients, with late diagnoses more common among individuals  
14  
15 222 bearing non-B variants compared to subtype B-infected patients. This result was consistent with the  
16  
17 223 reported tendency for late testing in Poland and Europe [Bander et al., 2009; Adler et al., 2009].

18  
19  
20 224 Since antiretroviral treatment initiation is recommended immediately in case of the late HIV  
21  
22 225 diagnosis, it is important to determine the virus subtype due to its possible influence on disease  
23  
24 226 transmission and progression and tropism [Geretii 2006]. This is especially important in subtype D  
25  
26 227 infection cases, as observed in this study. It has been demonstrated that in clade D-infected Kenyan  
27  
28 228 women the risk of death is more than two-fold higher compared to clade A-infected individuals.  
29  
30 229 Moreover, depletion of CD4+ lymphocytes was more rapid in subtype D-infected patients, suggesting  
31  
32 230 that disease progressed more rapidly in these patients than in non- D infected patients [Baeten  
33  
34 231 2007]. This phenomenon might be related to the higher rates of the CXCR4 or mixed tropisms  
35  
36 232 observed among individuals with subtype D infections which and faster progression to AIDS [Kaleebu  
37  
38 233 2007]. Indeed, time to AIDS (defined as CD4  $\leq$  200 cells/ $\mu$ l) among Ugandans with subtype D  
39  
40 234 infections was shorter compared to subtype A-infected individuals with a significantly higher risk of  
41  
42 235 death [Kiwauka 2007]. The nature of HIV progression rates in subtype D-infected individuals of  
43  
44 236 Caucasian origin remains to be defined.

45  
46  
47 237 A limitation of the current study relates to the subtyping methods used. The HIV-1  
48  
49 238 genotyping platforms available at the time of the study (2.8 Viroseq HIV-1 and Trugene Genotyping  
50  
51 239 systems) are used for carrying out HIV drug resistance analyses. Although both tools have been  
52  
53 240 shown to be highly efficient for B clade sequencing, their detection thresholds for non-B variants is  
54  
55 241 lower [Beddows 2003]. Therefore, the possibility that some variants may have gone undetected  
56  
57 242 exists, however, only these detection methods were available. Moreover, the non-B subtype viral  
58  
59  
60

1  
2  
3  
4  
5 243 loads observed may be inaccurate since most viral load assays are optimized for HIV-1 B clades . This  
6  
7 244 limitation is currently being overcome by the real-time PCR platforms optimized for an array of the  
8  
9 245 most common HIV-1 subtypes and CRFs.

10  
11 246 This study demonstrated that HIV subtypes associated with infections of Caucasians from  
12  
13 247 northwestern Poland were genetically diverse. It is likely that HIV non-B subtypes were acquired from  
14  
15 248 travelers visiting African and West European countries that spread the infection primarily via  
16  
17 249 heterosexual contacts. The dissemination of subtype D strains among Caucasians was identified in  
18  
19 250 symptomatic and AIDS-stage patients, a large majority of which were women. In general, non-B  
20  
21 251 subtype-infected individuals tended to be diagnosed with symptomatic infections or AIDS and these  
22  
23 252 patients had higher baseline viral loads and lower CD4+ lymphocyte counts compared to subtype B-  
24  
25 253 infected patients. This distribution is likely related to the low HIV testing frequency in Poland  
26  
27  
28  
29  
30 254 [European Centre for the Epidemiological Monitoring of HIV/AIDS, 2007], especially among  
31  
32 255 populations traditionally not associated with risky sexual or drug use-related behavior.

33  
34 256 In light of the increased dissemination of non-B subtypes and its impact on treatment  
35  
36 257 responses and disease progression, it will be important to carry out subtype analyses of strains  
37  
38 258 isolated from respective patients and a careful review of epidemiological data will be necessary as  
39  
40 259 described previously [Hemelaar et al., 2006]. Regional changes in HIV subtype distribution and  
41  
42 260 analysis of mutation patterns associated with transmission will play a significant role in clinical  
43  
44 261 management.

45  
46  
47  
48 262

49  
50 263

#### SEQUENCE DATA

51  
52  
53 264 HIV-1 non-B subtype sequences were submitted to the Gen Bank and may be accessed with  
54  
55 265 the following IDs: Subtype A: GU906861, GU906877; Subtype C: GU906868, GU906870; Subtype D:  
56  
57 266 GU906857, GU906858, GU906860, GU906863, GU906864, GU906865, GU906866, GU906867,  
58  
59 267 GU906871, GU906872, GU906873, GU906874; CRF01\_AE: GU906859, GU906862, GU906869,  
60  
268 GU906876; CRF13\_cpx: GU906875.

1  
2  
3  
4 2695  
6  
7 270**ACKNOWLEDGEMENTS**8  
9 271 This research was funded by the Pomeranian Medical University. Viroseq 2.8 sequencing10  
11 272 assays were kindly provided by Abbott Laboratories, Poland. The authors would like to thank Mike12  
13  
14 273 Youle for his intellectual contributions and review of the manuscript.  
15  
16  
17  
18  
19  
20  
21  
22  
23  
24  
25  
26  
27  
28  
29  
30  
31  
32  
33  
34  
35  
36  
37  
38  
39  
40  
41  
42  
43  
44  
45  
46  
47  
48  
49  
50  
51  
52  
53  
54  
55  
56  
57  
58  
59  
60

For Peer Review

1  
2  
3  
4  
5 274  
6  
7 275  
8  
9 276  
10  
11 277  
12  
13 278  
14  
15  
16 279  
17  
18 280  
19  
20 281  
21  
22 282  
23  
24  
25 283  
26 284  
27 285  
28 286  
29 287  
30  
31 288  
32  
33 289  
34 290  
35 291  
36 292  
37 293  
38 294  
39 295  
40 296  
41 297  
42 298  
43 299  
44  
45  
46  
47  
48  
49  
50  
51  
52  
53  
54  
55  
56  
57  
58  
59  
60

## REFERENCES

- Adler A, Mounier-Jack S, Coker RJ. 2009. Late diagnosis of HIV in Europe: definitional and public health challenges. *AIDS Care* 21:284-293.
- Baeten JM, Chohan B, Lavreys L, Chohan V, McClelland S, Certain L, Mandaliya K, Jaoko W, Overbaugh J. 2007. HIV-1 subtype D infection is associated with faster disease progression than subtype A in spite of similar plasma HIV-1 loads. *J Infect Dis* 195:1177-1180.
- Beddows S, Galpin S, Kazmi SH, Ashraf A, Johargy A, Frater AJ, White N, Braganza R, Clarke J, McClure M, Weber JN. 2003. Performance of two commercially available sequence-based HIV-1 genotyping systems for the detection of drug resistance against HIV type 1 group M subtypes. *J Med Virol* 70:337-42.
- Bander D, Leszczyszyn-Pynka M, Boroń-Kaczmarska A. 2009. Late AIDS diagnosis in patients hospitalized in Clinic of Infectious Diseases and Hepatology PAM in years 2003-2007. *Przegl Epidemiol* 63:61-66.
- Bocket L, Cheret A, Deuffic-Burban S, Choisy P, Gerard Y, de la Tribonnière X, Viget N, Ajana F, Goffard A, Barin F, Mouton Y, Yazdanpanah Y. 2005. Impact of human immunodeficiency virus type 1 subtype on first-line antiretroviral therapy effectiveness. *Antivir Ther* 10:247-254.
- Böni J, Pyra H, Gebhardt M, Perrin L, Bürgisser P, Matter L, Fierz W, Erb P, Piffaretti JC, Minder E, Grob P, Burckhardt JJ, Zwahlen M, Schüpbach J. 1999. High frequency of non-B subtypes in newly diagnosed HIV-1 infections in Switzerland. *J Acquir Immune Defic Syndr* 22:174-179.

- 1  
2  
3  
4 300 Chaix ML, Descamps D, Harzic M, Schneider V, Deveau C, Tamalet C, Pellegrin I, Izopet J, Ruffault A,  
5  
6 301 Masquelier B, Meyer L, Rouzioux C, Brun-Vezinet F, Costagliola D. 2003. Stable prevalence of  
7  
8 302 genotypic drug resistance mutations but increase in non-B virus among patients with primary HIV-1  
9  
10 303 infection in France. *AIDS* 17:2635-2643.  
11  
12 304  
13  
14 305 Czarkowski M, Cieleba E, Dacka P, Kondej B. 2007. National Institute of Public Health – National  
15  
16 306 Institute of Hygiene – Department of Epidemiology. Chief Sanitary Inspectorate – Department of  
17  
18 307 Communicable Diseases Control. Infectious diseases and poisonings in Poland in 2007. Available at  
19  
20 308 [www.pzh.gov.pl/oldpage/epimeld](http://www.pzh.gov.pl/oldpage/epimeld).  
21  
22 309  
23  
24 310 European Centre for the Epidemiological Monitoring of HIV/AIDS. WHO and UNAIDS Collaborating  
25  
26 311 Centre on HIV/AIDS. 2007. HIV/AIDS Surveillance in Europe. End-year report 2006. No. 75. Available  
27  
28 312 at [www.eurohiv.org/reports](http://www.eurohiv.org/reports).  
29  
30 313  
31  
32 314 Geretti AM. 2006. HIV-1 subtypes: epidemiology and significance for HIV management. Review. *Curr*  
33  
34 315 *Opin Infect Dis* 19:1-7.  
35  
36 316  
37  
38 317 Hemelaar J, Gouws E, Ghys PD, Osmanov S. 2006. Global and regional distribution of HIV-1 genetic  
39  
40 318 subtypes and recombinants in 2004. *AIDS* 20:13-23.  
41  
42 319  
43  
44 320 Holguín A, Alvarez A, Soriano V. 2002. High prevalence of HIV-1 subtype G and natural  
45  
46 321 polymorphisms at the protease gene among HIV-infected immigrants in Madrid. *AIDS* 16:1163-1170.  
47  
48 322  
49  
50 323 Holguín A, Ramirez de Arellano E, Rivas P, Soriano V. 2006. Efficacy of antiretroviral therapy in  
51  
52 324 individuals infected with HIV-1 non-B subtypes. *AIDS Rev* 8:98-107.  
53  
54  
55  
56  
57  
58  
59  
60

325



- 1  
2  
3  
4 326 Holguín A, de Mulder M, Yebra G, López M, Soriano V. 2008. Increase of non-B subtypes and  
5  
6 327 recombinants among newly diagnosed HIV-1 native Spaniards and immigrants in Spain. *Curr HIV Res*  
7  
8  
9 328 6:327-334.  
10  
11 329  
12  
13 330 Holguín A, López M, Soriano V. 2008. Reliability of rapid subtyping tools compared to that of  
14  
15 331 phylogenetic analysis for characterization of human immunodeficiency virus type 1 non-B subtypes  
16  
17 332 and recombinant forms. *J Clin Microbiol* 46:3896-3899.  
18  
19 333  
20  
21 334 Izdebski Z, Małeczka A. 2003. Attitudes and opinions of youth concerning HIV/AIDS problem. *HIV AIDS*  
22  
23 335 *Rev* 2:115-122.  
24  
25 336  
26  
27 337 Kantor R, Katzenstein DA, Efron B, Carvalho AP, Wynhoven B, Cane P, Clarke J, Sirivichayakul S, Soares  
28  
29 338 MA, Snoeck J, Pillay C, Rudich H, Rodrigues R, Holguin A, Ariyoshi K, Bouzas MB, Cahn P, Sugiura W,  
30  
31 339 Soriano V, Brigido LF, Grossman Z, Morris L, Vandamme AM, Tanuri A, Phanuphak P, Weber JN, Pillay  
32  
33 340 D, Harrigan PR, Camacho R, Schapiro JM, Shafer RW. 2005. Impact of HIV-1 subtype and antiretroviral  
34  
35 341 therapy on protease and reverse transcriptase genotype: results of a global collaboration. *PLoS Med*  
36  
37 342 2:e112.  
38  
39 343  
40  
41 344 Keele BF, Van Heuverswyn F, Li Y, Bailes E, Takehisa J, Santiago ML, Bibollet-Ruche F, Chen Y, Wain  
42  
43 345 LV, Liegeois F, Loul S, Ngole EM, Bienvenue Y, Delaporte E, Brookfield JF, Sharp PM, Shaw GM,  
44  
45 346 Peeters M, Hahn BH. 2006. Chimpanzee reservoirs of pandemic and nonpandemic HIV-1. *Science*  
46  
47 347 313:523-526.  
48  
49 348  
50  
51 349 Kaleebu P, Nankya IL, Yirell DL, Shafer LA, Kyosiimire-Lugemwa J, Lule DB, Morgan D, Beddows S,  
52  
53 350 Weber J, Whitworth JA. 2007. Relation between chemokine receptor use, disease stage, and HIV-1  
54  
55 351 subtypes A and D: results from a rural Ugandan cohort. *J Acquir Immune Defic Syndr* 45:28-33.  
56  
57  
58  
59  
60

- 1  
2  
3  
4 352  
5  
6  
7 353 Kiwanuka N, Laeyendecker O, Robb M, Kigozi G, Arroyo M, McCutchan F, Eller LA, Eller M, Makumbi  
8  
9 354 F, Birx D, Wabwire-Mangen F, Serwadda D, Sewankambo NK, Quinn TC, Wawer M, Gray R. 2008.  
10  
11 355 Effect of human immunodeficiency virus Type 1 (HIV-1) subtype on disease progression in persons  
12  
13 356 from Rakai, Uganda, with incident HIV-1 infection. *J Infect Dis* 197:707-713.  
14  
15  
16 357  
17  
18 358 Paraskevis D, Pybus O, Magiorkinis G, Hatzakis A, Wensing AM, van de Vijver DA, Albert J, Angarano  
19  
20 359 G, Asjo B, Balotta C, Boeri E, Camacho R, Chaix ML, Coughlan S, Costagliola D, De Luca A, de Mendoza  
21  
22 360 C, Derdelinckx I, Grossman Z, Hamouda O, Hoepelman IM, Horban A, Korn K, Kuecherer C, Leitner T,  
23  
24 361 Loveday C, Macrae E, Maljkovic I, Meyer L, Nielsen C, Op de Coul EL, Ormaasen V, Perrin L,  
25  
26 362 Puchhammer-Stockl E, Ruiz L, Salminen M, Schmit JC, Schuurman R, Soriano V, Stanczak J, Stanojevic  
27  
28 363 M, Struck D, Van Laethem K, Violin M, Yerly S, Zazzi M, Boucher CA, Vandamme AM, Programme S.  
29  
30 364 2009. Tracing the HIV-1 subtype B mobility in Europe: a phylogeographic approach. *Retrovirology*  
31  
32 365 6:49.  
33  
34  
35 366  
36  
37 367  
38  
39 367 Rambaut A, Posada D, Crandall KA, Holmes EC. 2004. The causes and consequences of HIV evolution.  
40  
41 368 *Nat Rev Genet* 5:52-61.  
42  
43  
44 369  
45  
46 370 Ramirez-Piedad MK, Lepej SZ, Yerly S, Begovac J. 2009. High prevalence of non-B HIV-1 subtypes in  
47  
48 371 seamen and their sexual partners in Croatia. *J Med Virol* 81:573-577.  
49  
50  
51 372  
52  
53 373 Sagir A, Oette M, Kaiser R, Däumer M, Fätkenheuer G, Rockstroh JK, Knechten H, Schmutz G, Hower  
54  
55 374 M, Emmelkamp J, Pfister H, Häussinger D. RESINA Study Team. 2007. Trends of prevalence of  
56  
57 375 primary HIV drug resistance in Germany. *J Antimicrob Chemother* 60:843-848.  
58  
59  
60 376

- 1  
2  
3  
4  
5 377 Stańczak GP, Stańczak JJ, Firlag-Burkacka E, Wiercińska-Drapało A, Leszczyszyn-Pynkad M,  
6  
7 378 Jabłonowska E, Małolepsza E, Horban A. 2007. Transmission of HIV-1 drug resistance among newly  
8  
9 379 diagnosed patients in Poland. *Przegl Epidemiol* 61:29-34.  
10  
11 380  
12  
13  
14 381 Taylor BS, Hammer SM. 2008. The challenge of HIV-1 subtype diversity. *N Engl J Med* 359:1965-1966.  
15  
16 382  
17  
18 383 Thomson MM, de Parga EV, Vinogradova A, Sierra M, Yakovlev A, Rakhmanova A, Delgado E, Casado  
19  
20 384 G, Muñoz M, Carmona R, Vega Y, Pérez-Alvarez L, Contreras G, Medrano L, Osmanov S, Nájera R.  
21  
22  
23 385 2007. New insights into the origin of the HIV type 1 subtype A epidemic in former Soviet Union's  
24  
25 386 countries derived from sequence analyses of preepidemically transmitted viruses. *AIDS Res Hum*  
26  
27 387 *Retroviruses* 23:1599-1604.  
28  
29  
30 388  
31  
32 389 Van Heuverswyn F, Li Y, Neel C, Bailes E, Keele BF, Liu W, Loul S, Butel C, Liegeois F, Bienvenue Y,  
33  
34 390 Ngolle EM, Sharp PM, Shaw GM, Delaporte E, Hahn BH, Peeters M. 2006. Human immunodeficiency  
35  
36 391 viruses: SIV infection in wild gorillas. *Nature* 444:164.  
37  
38  
39 392  
40  
41  
42  
43  
44  
45  
46  
47  
48  
49  
50  
51  
52  
53  
54  
55  
56  
57  
58  
59  
60

1  
2  
3  
4  
5 393 **Figure Legends**

6  
7 394 Fig. 1. Neighbor-joining analysis. Neighbor-joining tree showing phylogenetic relationships of subtype  
8  
9 395 B (A) and non-subtype B (B) isolates to the HIV-1 M group reference strains. Bootstrap values >700  
10  
11 396 are listed at the base of each branch. Subtype for each reference isolate are indicated on external  
12  
13 397 nodes. From the final version of the phylogenetic tree reference CRFs sequences for the variants not  
14  
15 398 observed in this study were removed.

16  
17 399  
18  
19  
20 400 Fig. 2. HIV subtype characterization. HIV-1 M subtype and CRF assignment by phylogenetic analysis  
21  
22 401 (A), the REGA genotyping tool 2.0 (B) or the Stanford HIV drug resistance database (C).

23 402  
24  
25  
26  
27 403 Fig. 3. Phylogenetic tree reconstruction. Each patient was coded with a unique identifier and their  
28  
29 404 respective isolates analyzed based on HIV-1 protease and reverse transcriptase sequences. HIV-1  
30  
31 405 variants are indicated to the right. Bootstrap values (1000 sets) are indicated if above 700. Branch  
32  
33 406 length reflects evolutionary distance. Clusters of patients with similar exposure modes are circled.  
34  
35 407 MSM, Men who have sex with men; IDU, Injection drug users; HET, heterosexual transmissions.

36  
37 408  
38  
39 409 Fig. 4. Baseline CD4+ lymphocyte counts in the analysed groups. Each symbol represents the number  
40  
41 410 of CD4+ cells/ $\mu$ l from either HIV-1 B or non-B subtype-infected individuals.

42  
43 411  
44  
45  
46  
47 412 Figure 5. Baseline HIV-1 viral loads in the analysed groups Each symbol represents the number of  
48  
49 413 copies/ml from either HIV-1 B or non-B subtype-infected individuals.

414 Table I. Subtype-based characteristics of the study population.

415

	Subtype A	Subtype B	Subtype C	Subtype D	CRF13_cpx	CRF01_ AE	Non-B (total)	Entire group
Number of individuals	2	81	2	12	1	5	21	102
Female (%)	50%	21%	100%	58%	0	50%	57%	28%
HIV infection stage at diagnosis (%)								
Asymptomatic	50%	44%	100%	17%	0	0	24%	40%
Symptomatic	0	31%	0	42%	100%	0	29%	30%
AIDS	50%	25%	0	42%	0	100%	48%	29%
CD4 T cell category at diagnosis								
>500 cells/ $\mu$ l (%)	0	20%	100%	0	0	0	10%	20%
200-499 cells/ $\mu$ l	50%	40%	0	25%	0	0	19%	40%
<200 cells/ $\mu$ l	50%	40%	0	75%	100%	100%	71%	40%
Median baseline lymphocyte CD4 count, cells/ $\mu$ l (IQR)	198	295.5 (85.5- 461)	644 (616- 672)	119 (25.5- 237,5)	140	17 (14-18)	119,5 (18-229)	234.5 (62-418)

Median baseline viral load <sup>1</sup> , copies/ml (IQR)	Not available	95,300 (21,200-435,000)	34,450 (25,675-43,225)	370,000 (180,000-480,000)	Not available	390,000 (96,500-590,000)	275,000 (76,900-507,500)	100,000 (24,800-480,000)
Mean age at the diagnosis, years (range)	29 (18-40)	38.2 (23-67)	29 (28-30)	44.6 (32-60)	45	34.8 (21-54)	40.9 (26-60)	38.7 (23-67)
Transmission route								
IDU	100%	35%	0	0	0	50%	19%	31%
Heterosexual	0	15%	100%	100%	100%	50%	81%	28%
MSM	0	42%	0	0	0	0	0	33%
Mixed <sup>2</sup>	0	9%	0	0	0	0	0	7%

416 <sup>1</sup>Baseline viral loads available for 51/102 patients (50%). 39/81 (48%) patients presented with subtype B infections and 12/21 (57%) patients presented with  
417 non-B clade infections.

418 <sup>2</sup>Mixed route of transmission was assigned for individuals with probable infections from exposures resulting from either intravenous drug use (IDU)/men  
419 having sex with men (MSM) or from MSM/heterosexual exposure

1  
2  
3  
4  
5  
6  
7  
8  
9  
10  
11  
12  
13  
14  
15  
16  
17  
18  
19  
20  
21  
22  
23  
24  
25  
26  
27  
28  
29  
30  
31  
32  
33  
34  
35  
36  
37  
38  
39  
40  
41  
42  
43  
44  
45  
46  
47  
48  
49  
50  
51  
52  
53  
54  
55  
56  
57  
58  
59  
60

420

For Peer Review